

\*\*\*\*\*

Marine Weather Forecast for Shell Noches GC19 PPL Geotechnical  
Forecast valid as of 23-Feb-2025 0900 GMT

\*\*\*\*\*

All times are local.

Today

Winds: E, 5-10 kts.  
Waves: NE, 2-3 feet, 5-6 sec.  
No currents available.

Tonight

Winds: NW, 10-15 kts.  
Waves: N, 5-6 feet, 6-7 sec.  
No currents available.

Sunday

Winds: E, 20-25 kts.  
Waves: E, 5-6 feet, 6-7 sec.  
No currents available.

Monday Night

Winds: NE, 5-10 kts.  
Waves: E, 3-4 feet, 6-7 sec.  
No currents available.

Monday

Winds: NE, 20-25 kts.  
Waves: E, 5-6 feet, 6-7 sec.  
No currents available.

Tuesday Night

Winds: NE, 5-10 kts.  
Waves: E, 1-2 feet, 6-7 sec.  
No currents available.

Tuesday

Winds: NE, 5-10 kts.  
Waves: E, 2-3 feet, 6-7 sec.  
No currents available.

Wednesday Night

Winds: NE, 5-10 kts.  
Waves: NE, 1-2 feet, 3-4 sec.  
No currents available.

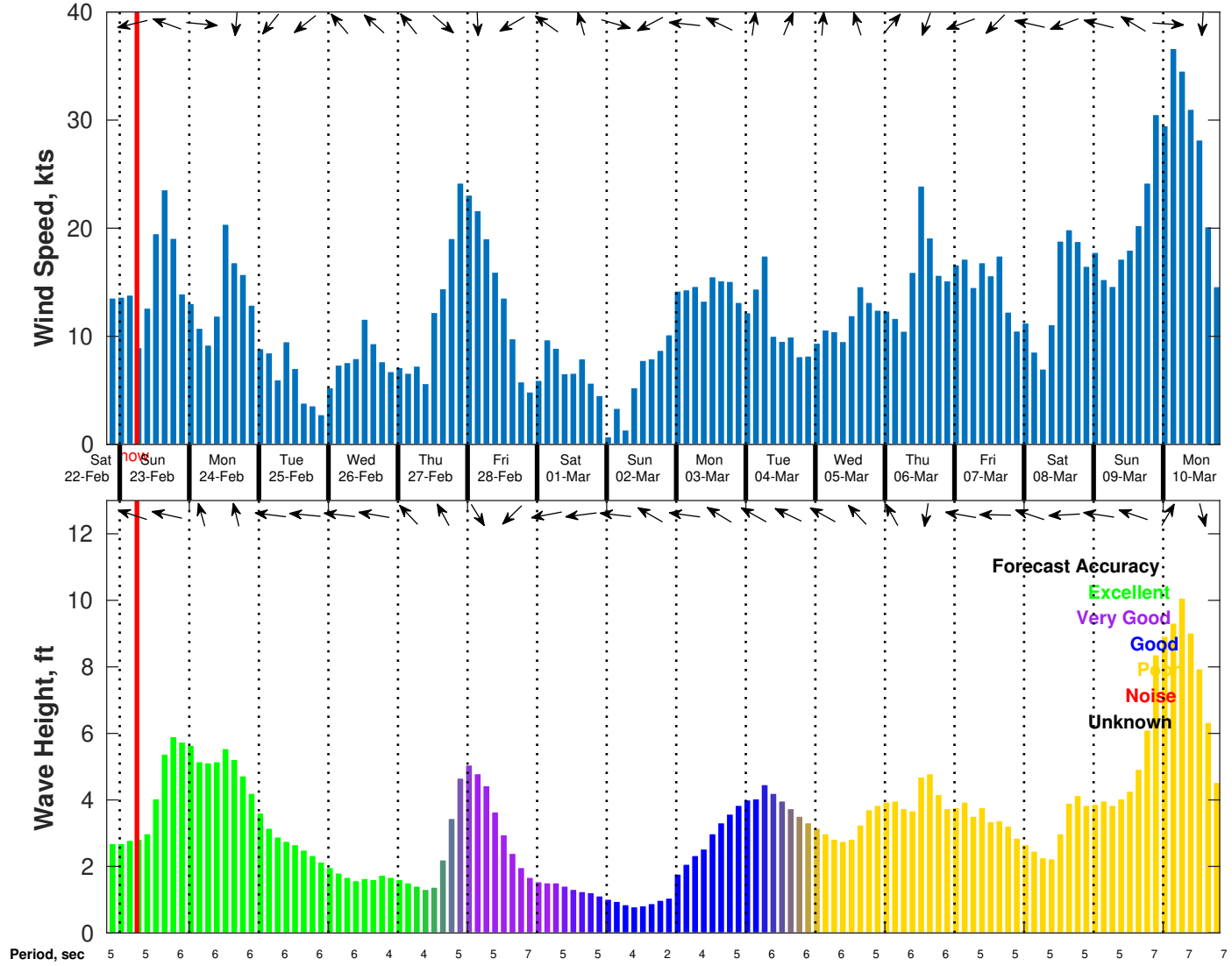
Wednesday

Winds: NE, 10-15 kts.  
Waves: E, 1-2 feet, 5-6 sec.  
No currents available.

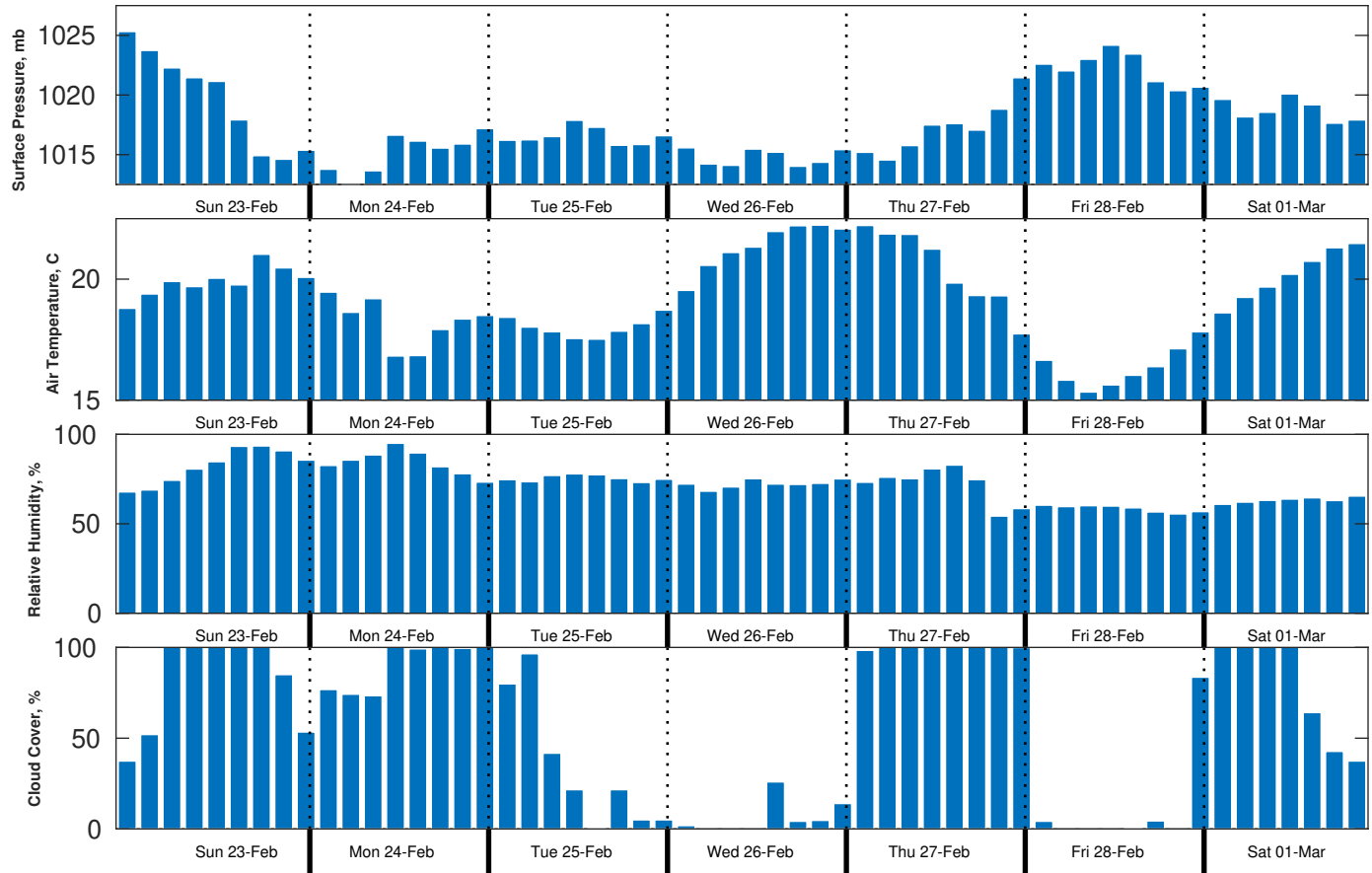
Thursday Night

Winds: NE, 20-25 kts.  
Waves: N, 5-6 feet, 5-6 sec.  
No currents available.

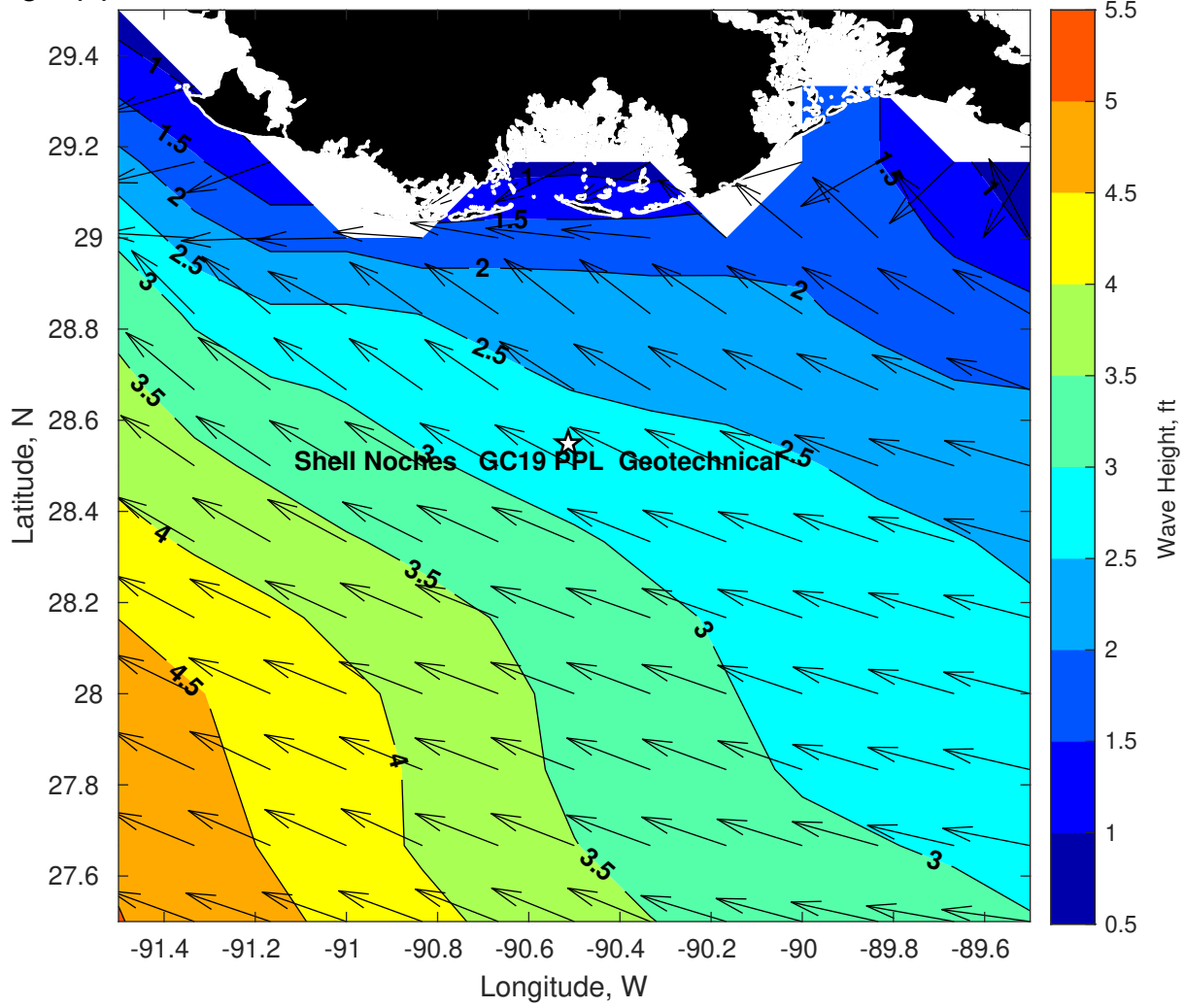
**Wind & Wave Forecast for Shell Noches GC19 PPL Geotechnical from 22-Feb-2025 20:00:00 to 10-Mar-2025 20:00:00**



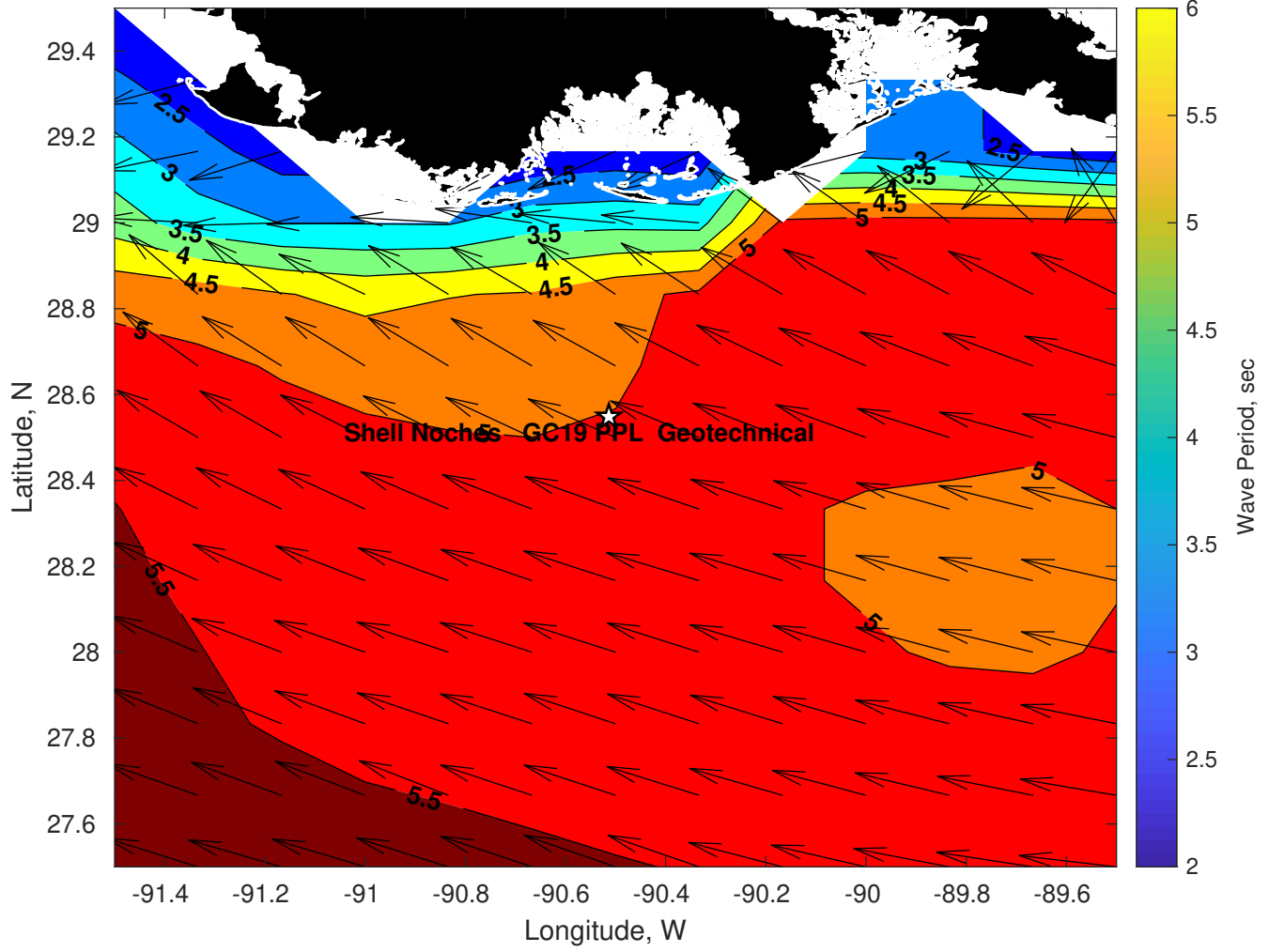
**Met Forecast for Shell Noches GC19 PPL Geotechnical from 23-Feb-2025 00:00:00 to 02-Mar-2025 00:00:00**



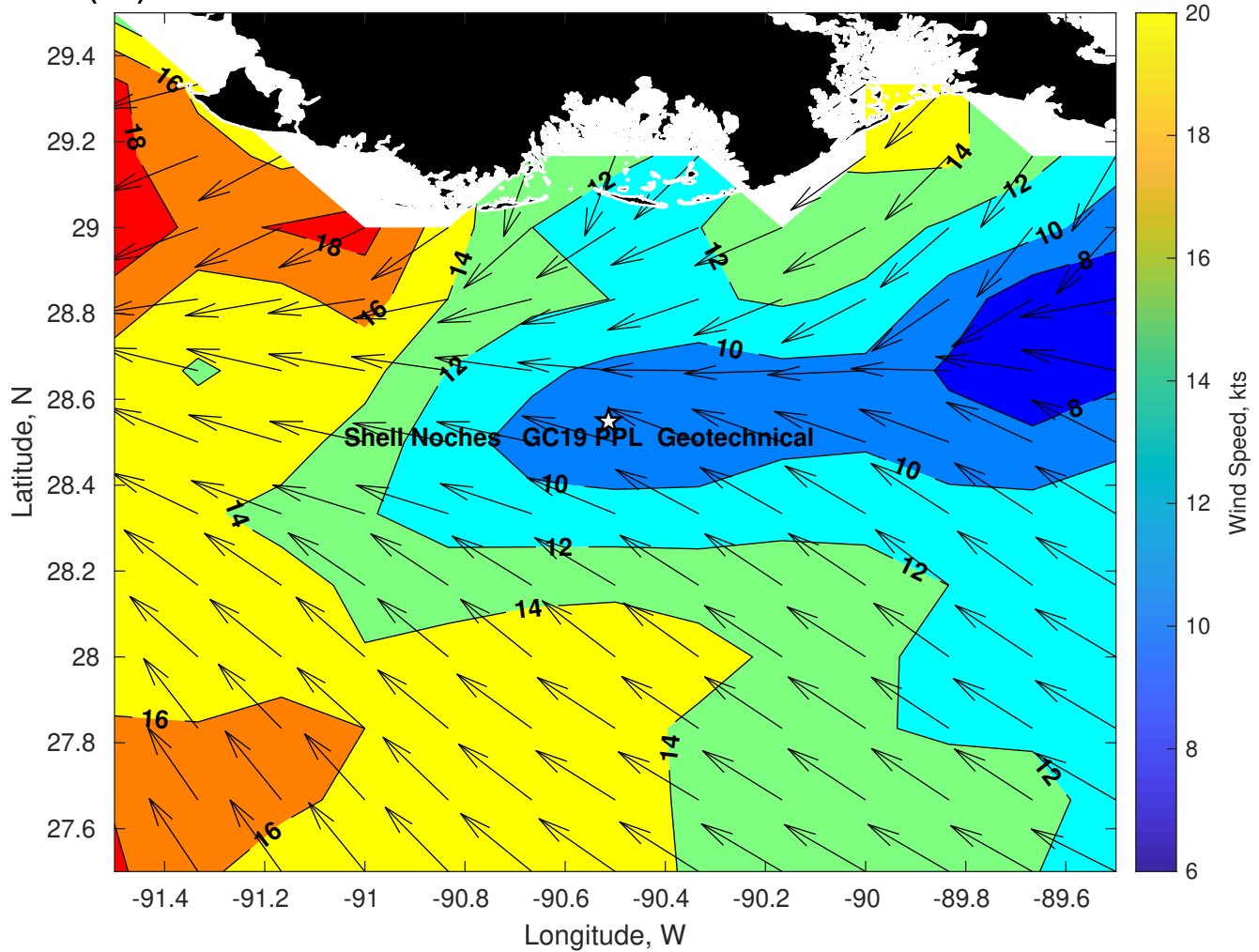
Wave Height (ft) for Shell Noches GC19 PPL Geotechnical at 23-Feb-2025 09:00:00



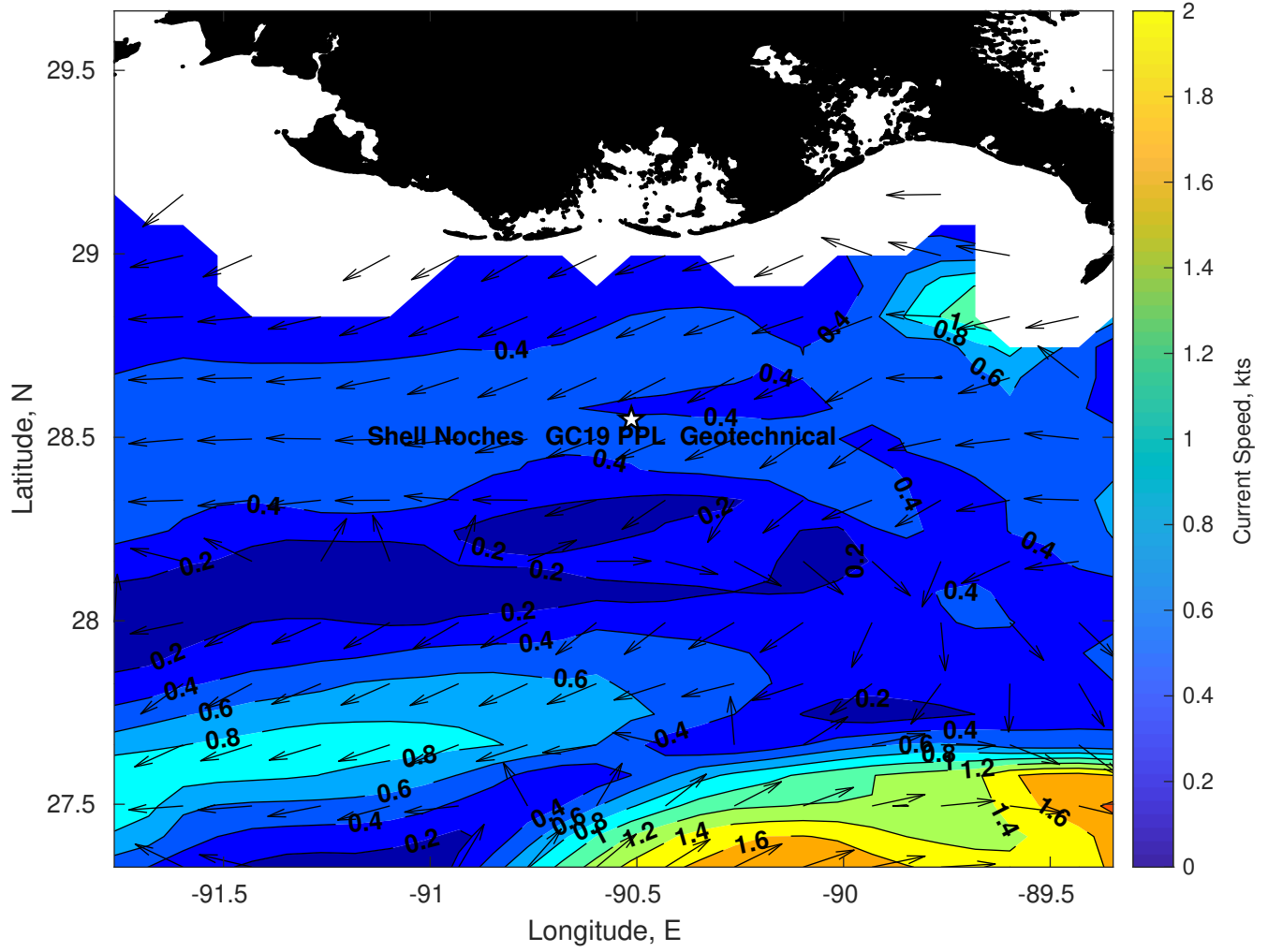
Wave Period (sec) for Shell Noches GC19 PPL Geotechnical at 23-Feb-2025 09:00:00



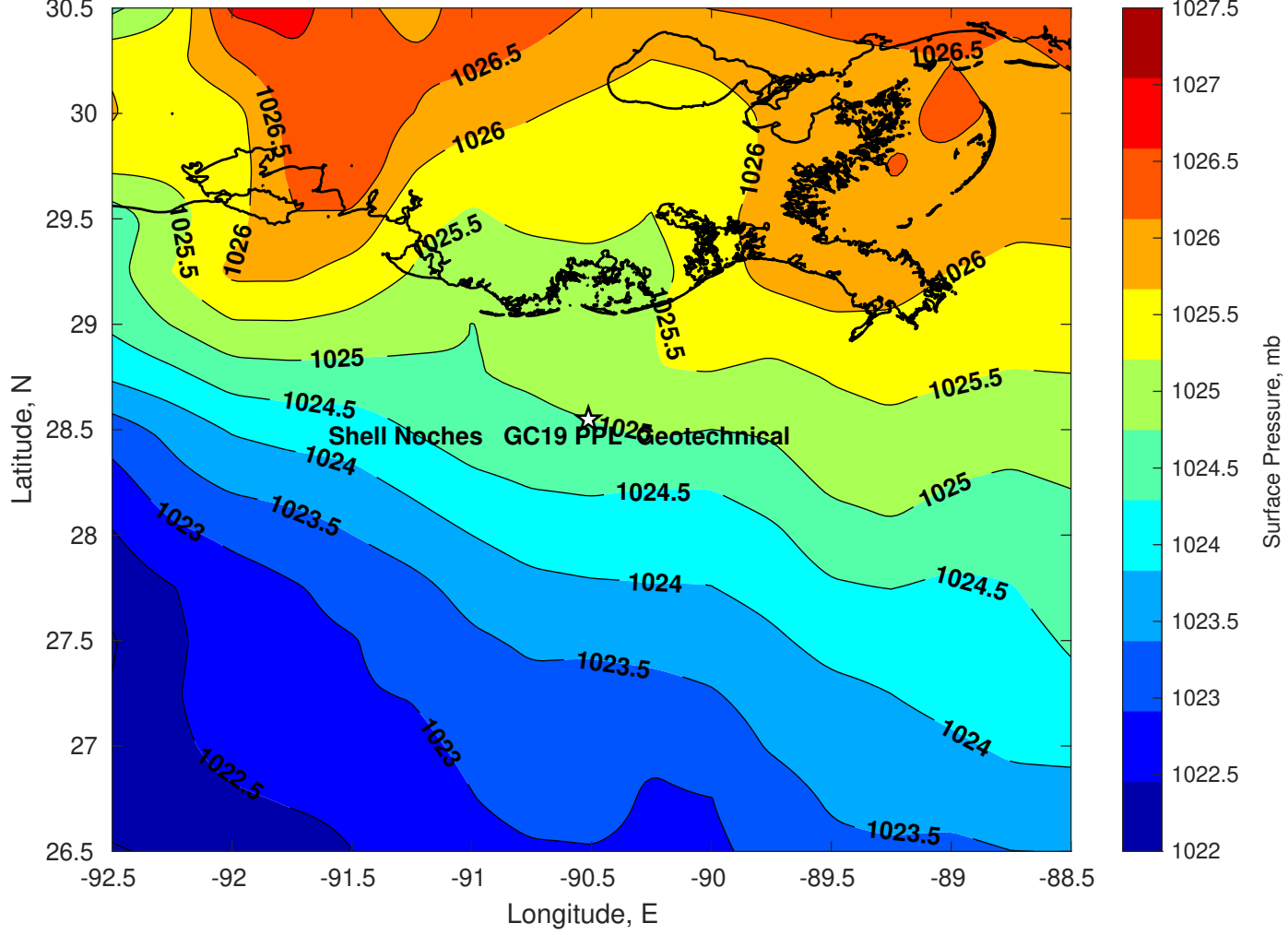
**Winds (kts) for Shell Noches GC19 PPL Geotechnical at 23-Feb-2025 09:00:00**



Surface Currents for Shell Noches GC19 PPL Geotechnical at 22-Feb-2025 00:00:00

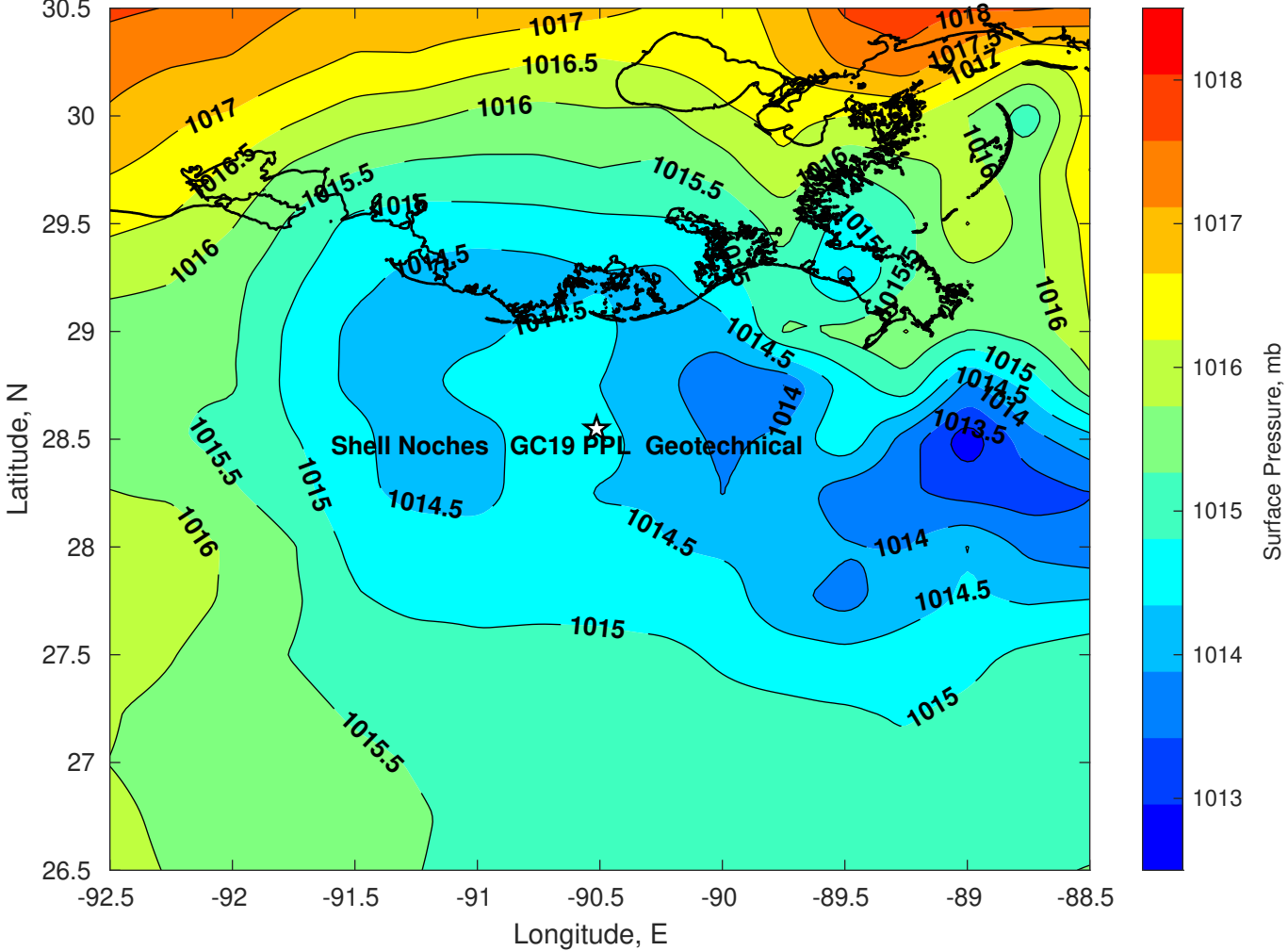


Surface Pressure (mb) for Shell Noches GC19 PPL Geotechnical at 23-Feb-2025 00:00:00

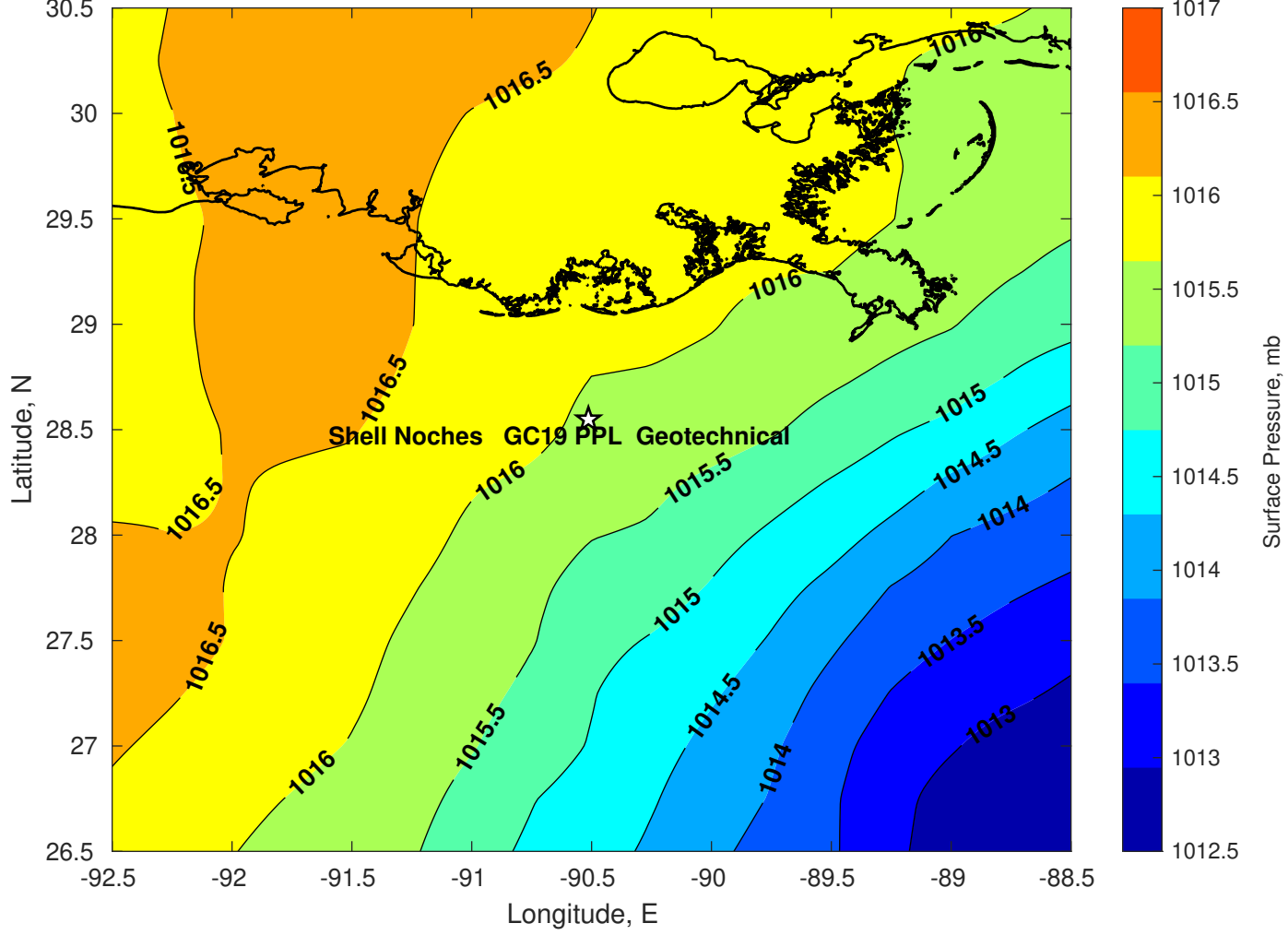




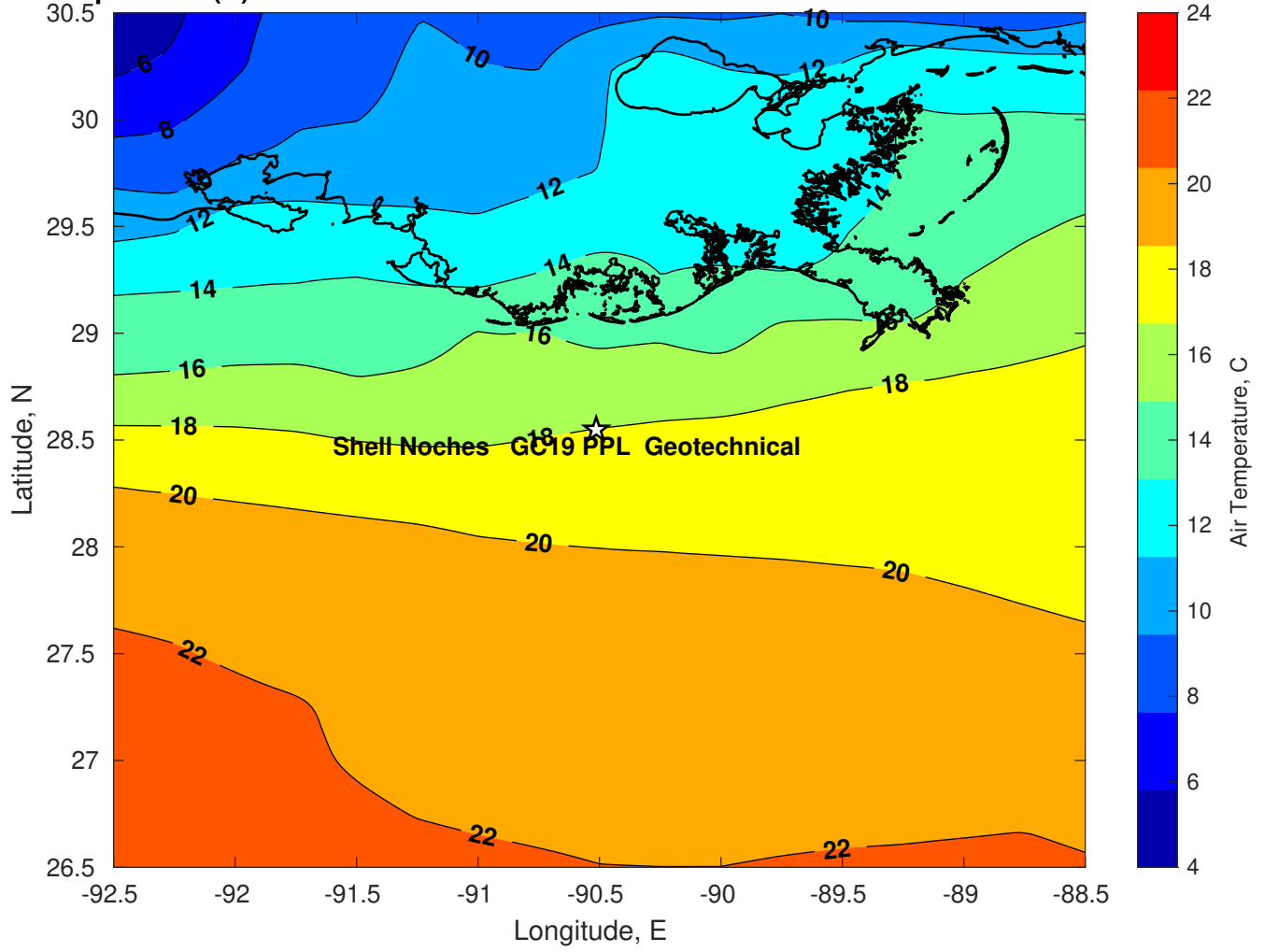
Surface Pressure (mb) for Shell Noches GC19 PPL Geotechnical at 24-Feb-2025 00:00:00



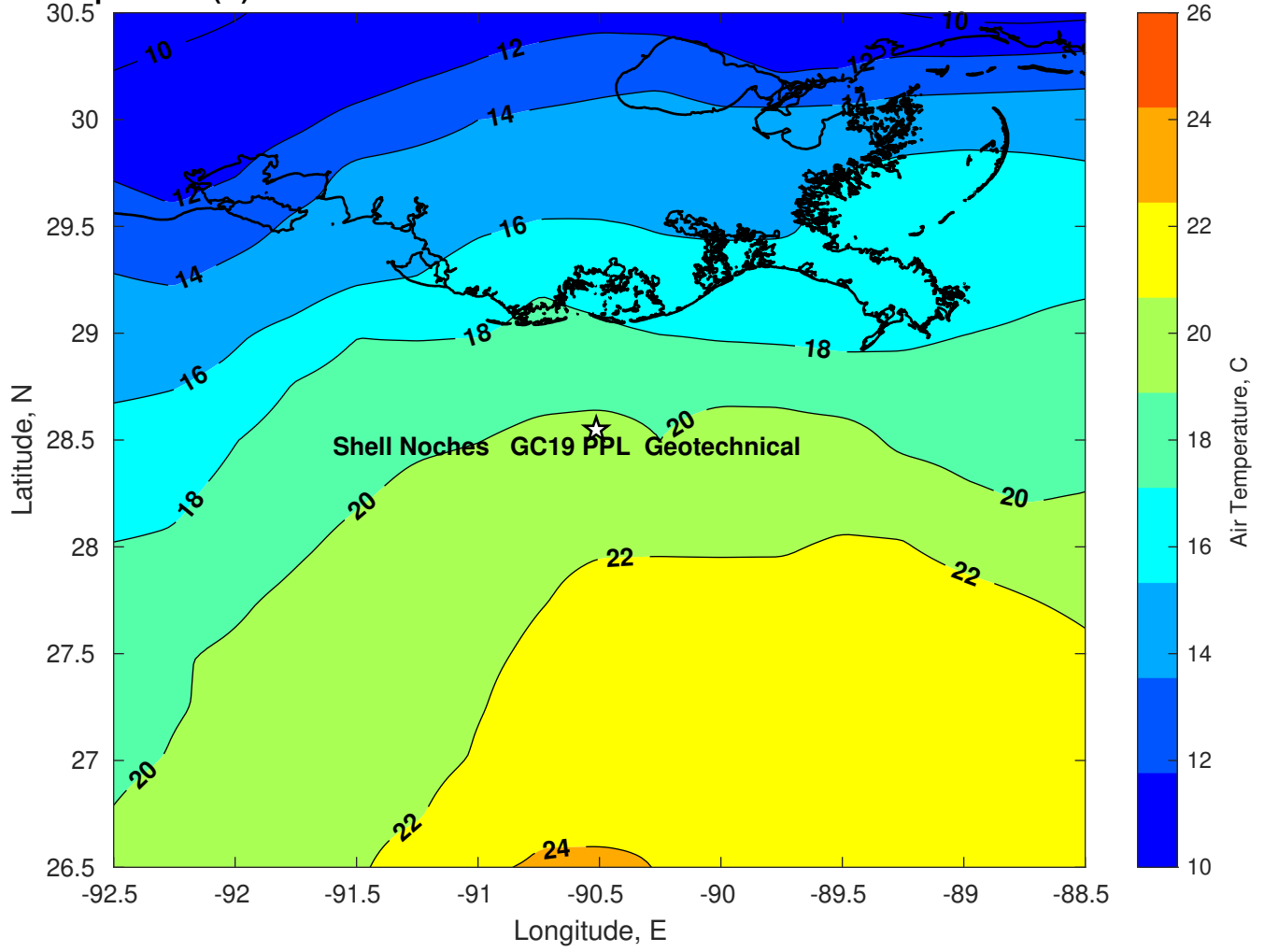
Surface Pressure (mb) for Shell Noches GC19 PPL Geotechnical at 25-Feb-2025 00:00:00



**Air Temperature (C) for Shell Noches GC19 PPL Geotechnical at 23-Feb-2025**



**Air Temperature (C) for Shell Noches GC19 PPL Geotechnical at 23-Feb-2025**



Air Temperature (C) for Shell Noches GC19 PPL Geotechnical at 23-Feb-2025

