

\*\*\*\*\*

Marine Weather Forecast for CSA (ONHYM) PPL EBS - Western Sahara  
Forecast valid as of 24-Feb-2025 0900 GMT

\*\*\*\*\*

All times are local.

Today

Winds: NE, 20-25 kts.  
Waves: NW, 6-7 feet, 12-13 sec.  
No currents available.

Tonight

Winds: NE, 20-25 kts.  
Waves: NW, 7-8 feet, 18-19 sec.  
No currents available.

Tuesday

Winds: NE, 15-20 kts.  
Waves: NW, 7-8 feet, 17-18 sec.  
No currents available.

Tuesday Night

Winds: NE, 20-25 kts.  
Waves: NW, 6-7 feet, 14-15 sec.  
No currents available.

Wednesday

Winds: NE, 15-20 kts.  
Waves: NW, 5-6 feet, 13-14 sec.  
No currents available.

Wednesday Night

Winds: NE, 15-20 kts.  
Waves: NW, 5-6 feet, 12-13 sec.  
No currents available.

Thursday

Winds: NE, 15-20 kts.  
Waves: NW, 5-6 feet, 11-12 sec.  
No currents available.

Thursday Night

Winds: NE, 15-20 kts.  
Waves: NW, 5-6 feet, 11-12 sec.  
No currents available.

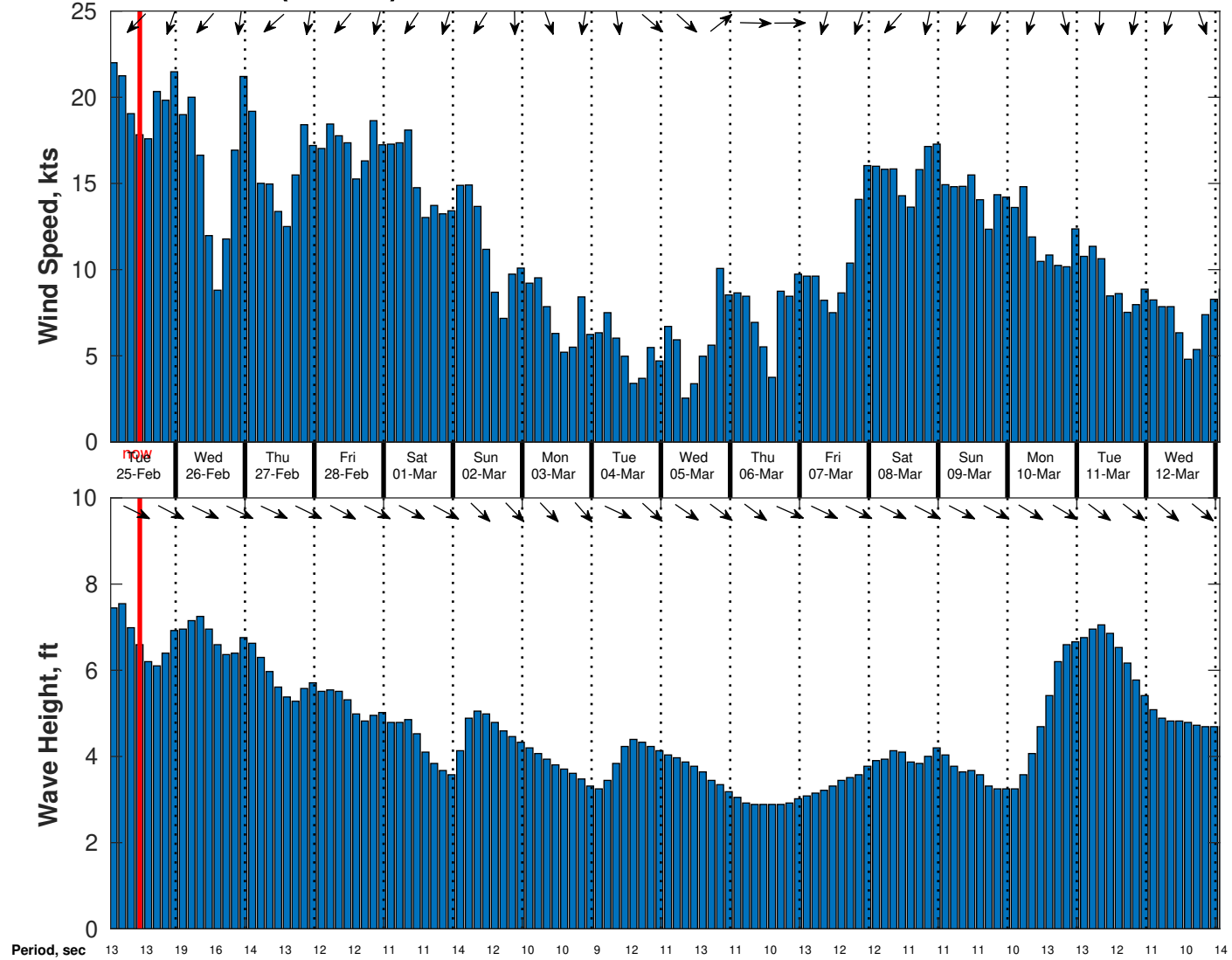
Friday

Winds: NE, 15-20 kts.  
Waves: NW, 4-5 feet, 10-11 sec.  
No currents available.

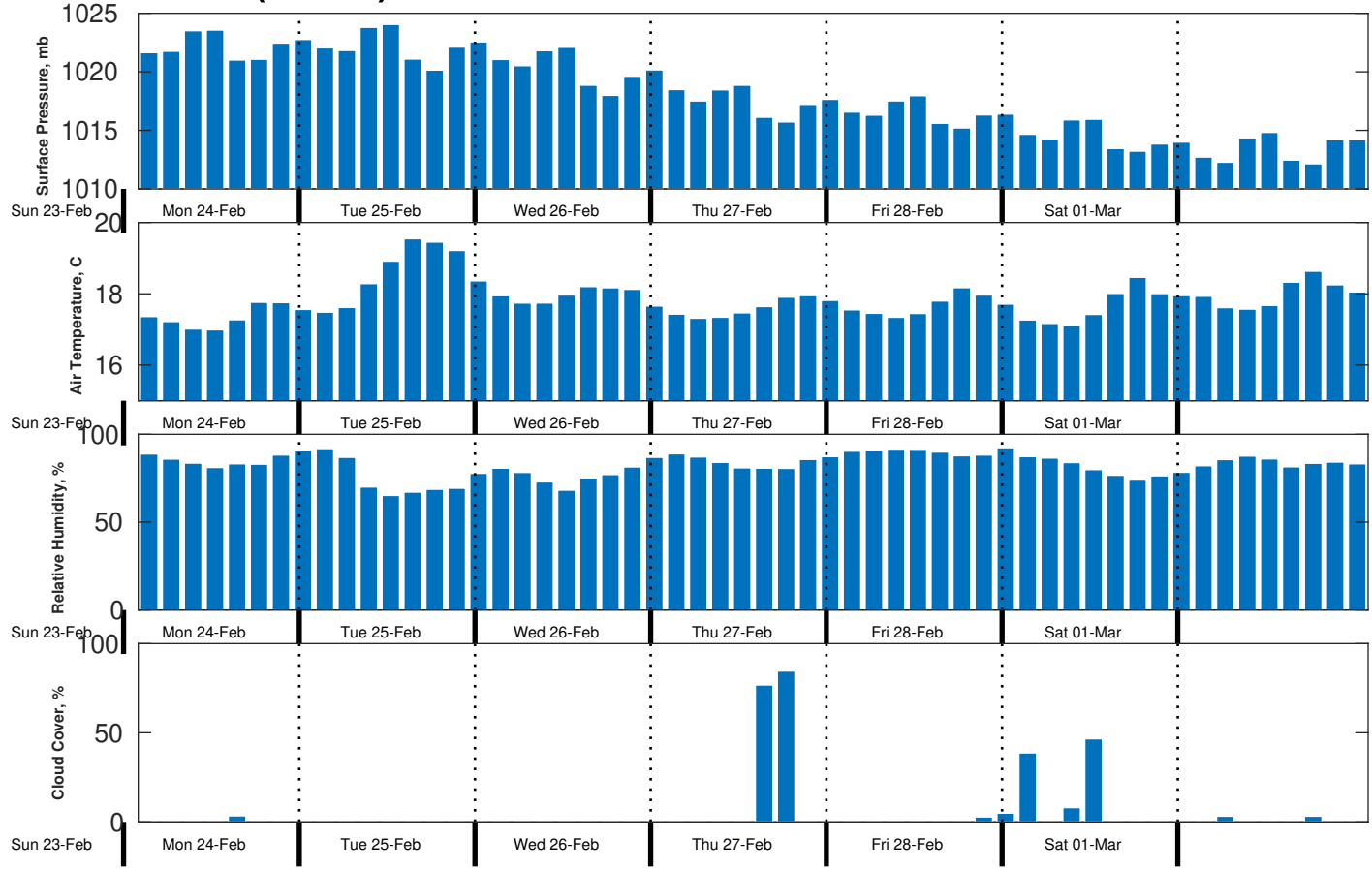
Friday Night

Winds: NE, 10-15 kts.  
Waves: NW, 4-5 feet, 14-15 sec.  
No currents available.

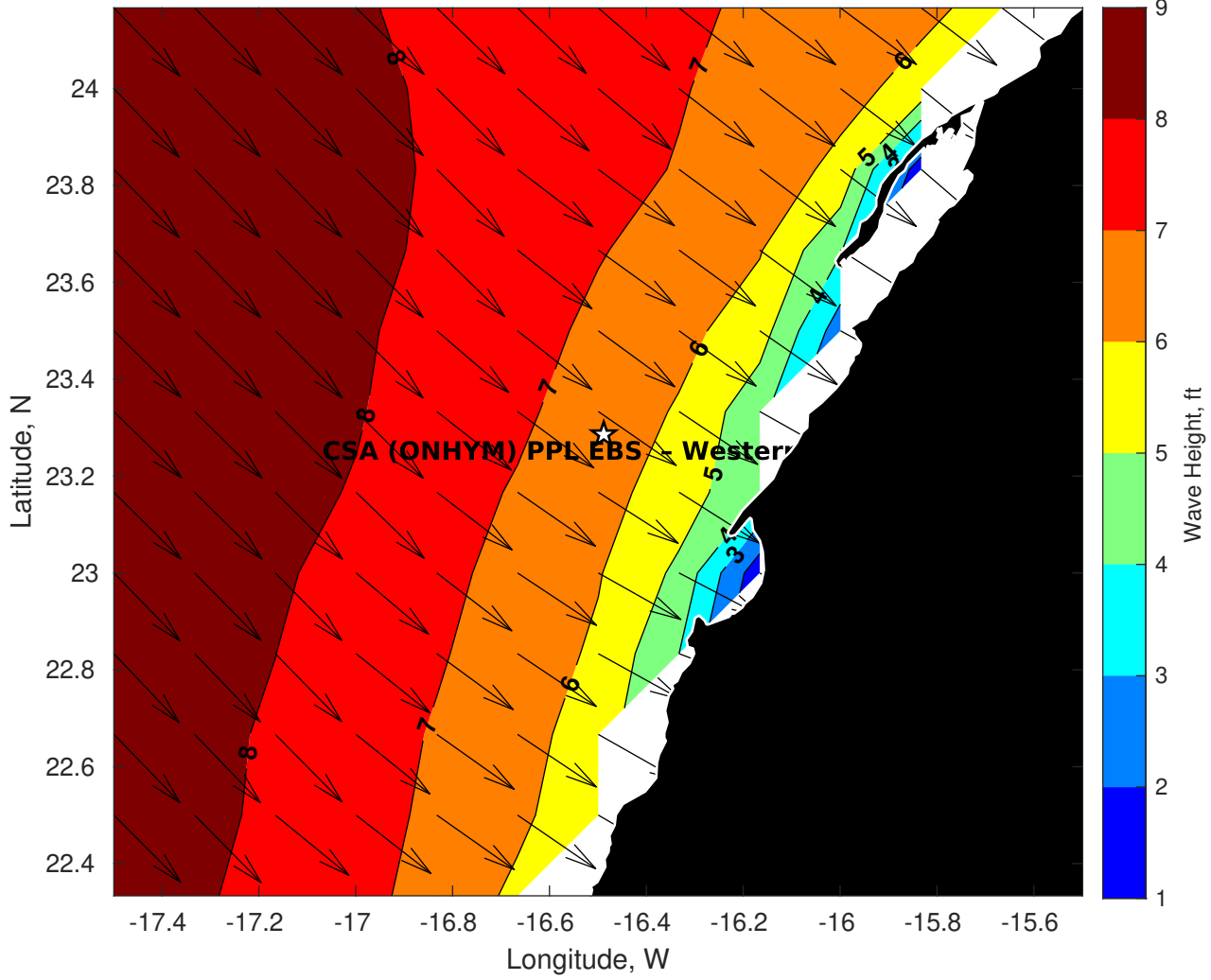
**Wind & Wave Forecast for CSA (ONHYM) PPL EBS - Western Sahara from 24-Feb-2025 01:00:00 to 12-Mar-2025 01:00:00**



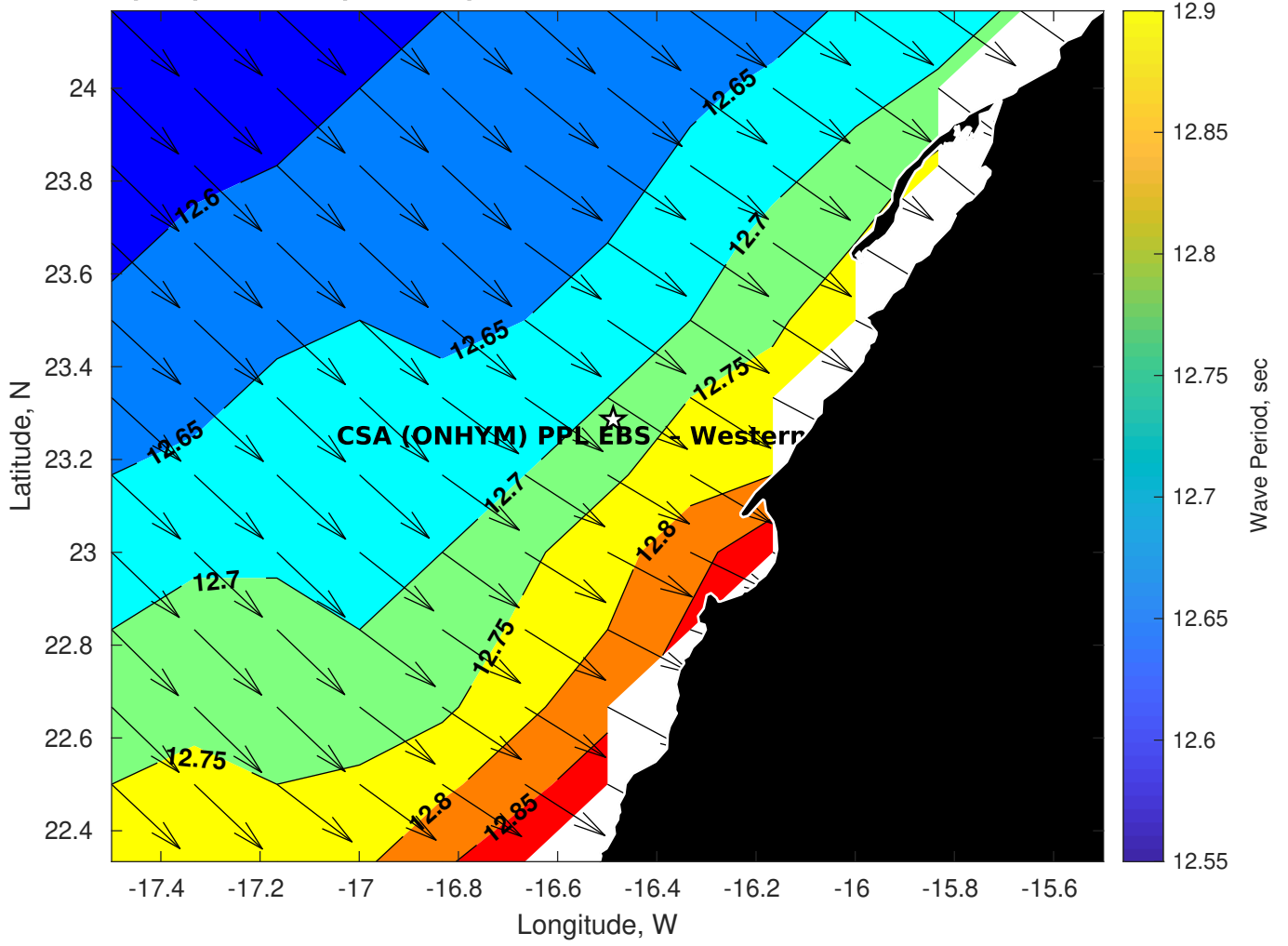
**Met Forecast for CSA (ONHYM) PPL EBS - Western Sahara from 24-Feb-2025 00:00:00 to 03-Mar-2025 00:00:00**



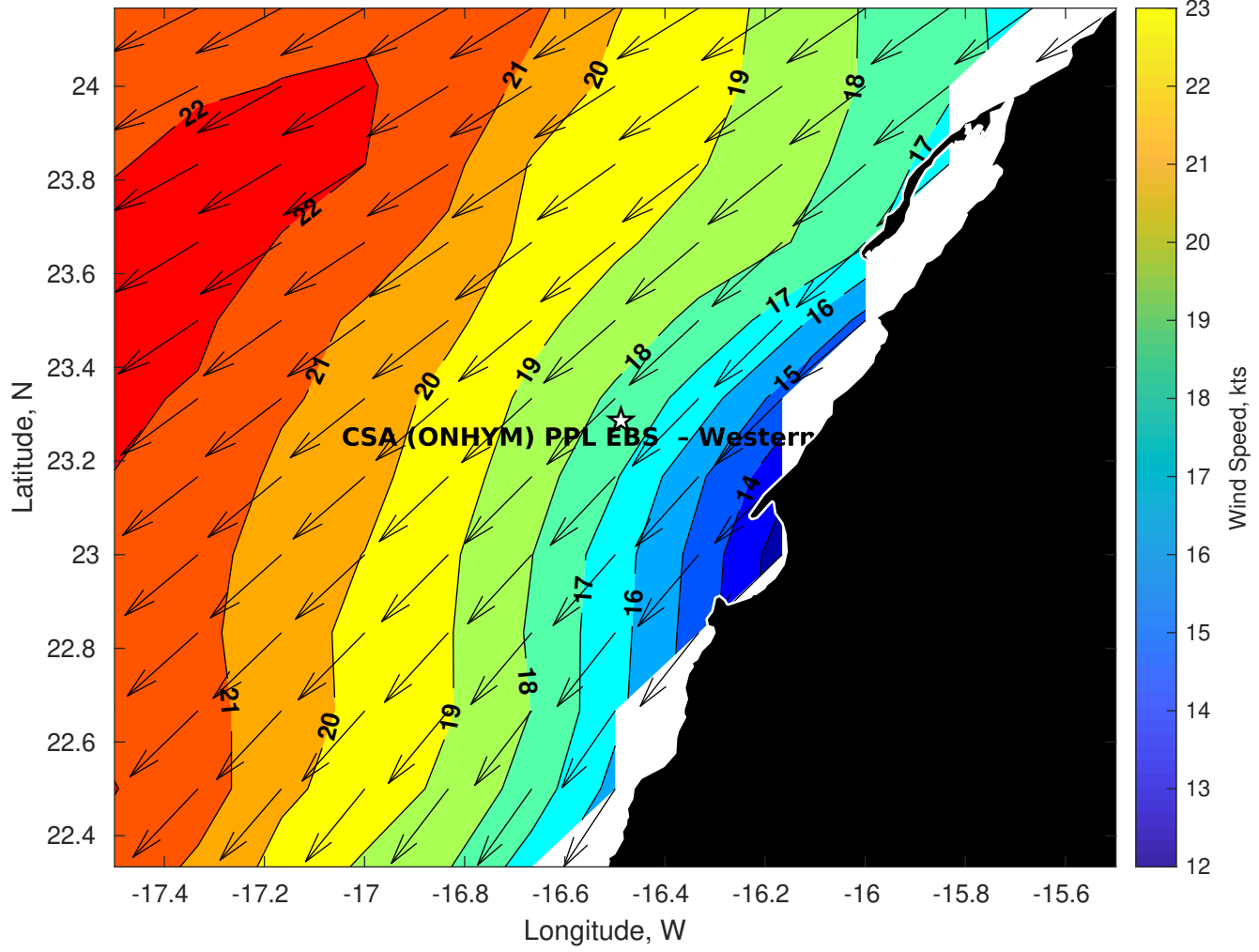
**Wave Height (ft) for CSA (ONHYM) PPL EBS - Western Sahara at 24-Feb-2025 09:00:00**



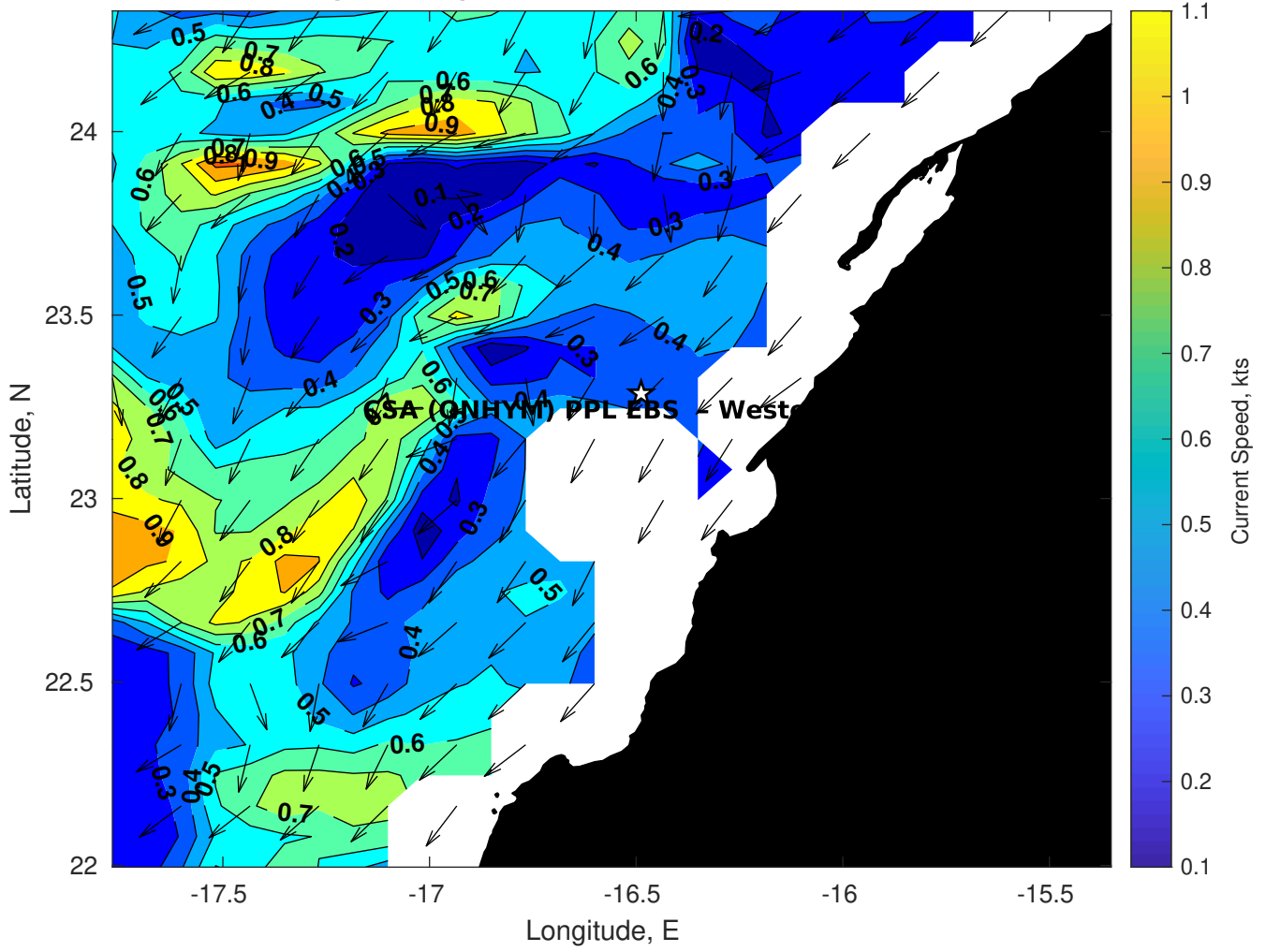
**Wave Period (sec) for CSA (ONHYM) PPL EBS - Western Sahara at 24-Feb-2025 09:00:00**



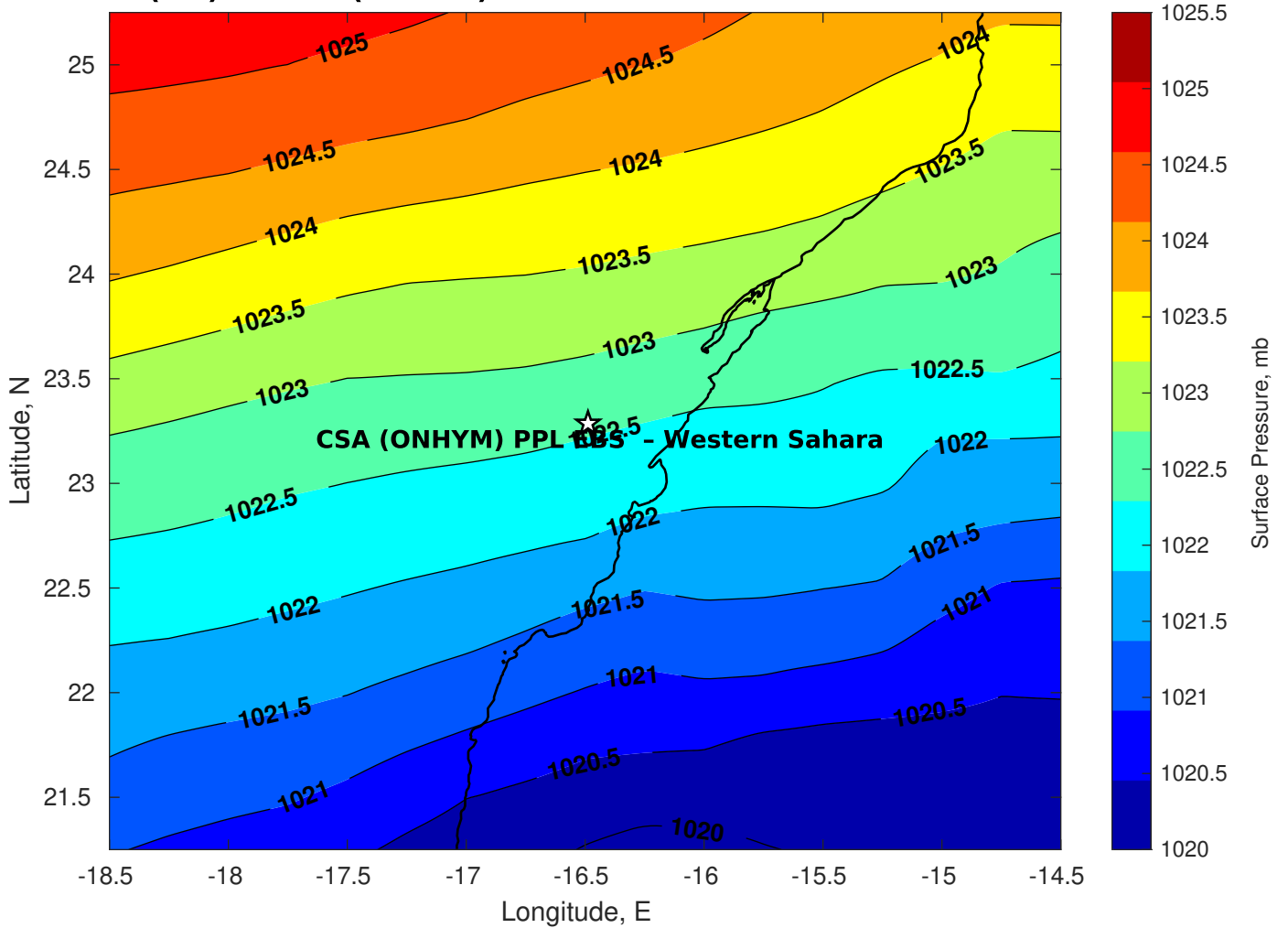
**Winds (kts) for CSA (ONHYM) PPL EBS - Western Sahara at 24-Feb-2025 09:00:00**



**Surface Currents for CSA (ONHYM) PPL EBS - Western Sahara at 23-Feb-2025 00:00:00**

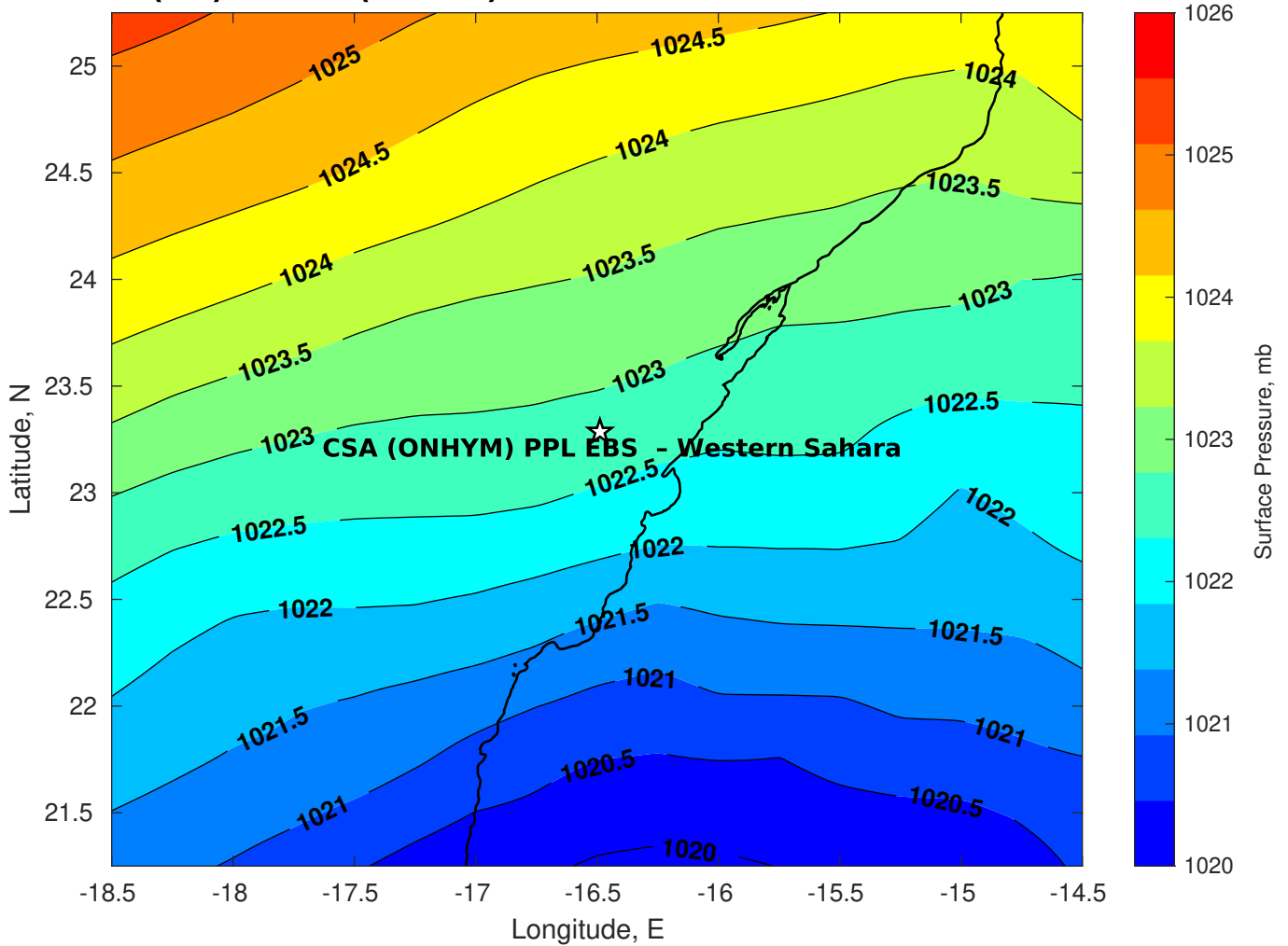


**Surface Pressure (mb) for CSA (ONHYM) PPL EBS - Western Sahara at 24-Feb-2025 00:00:00**

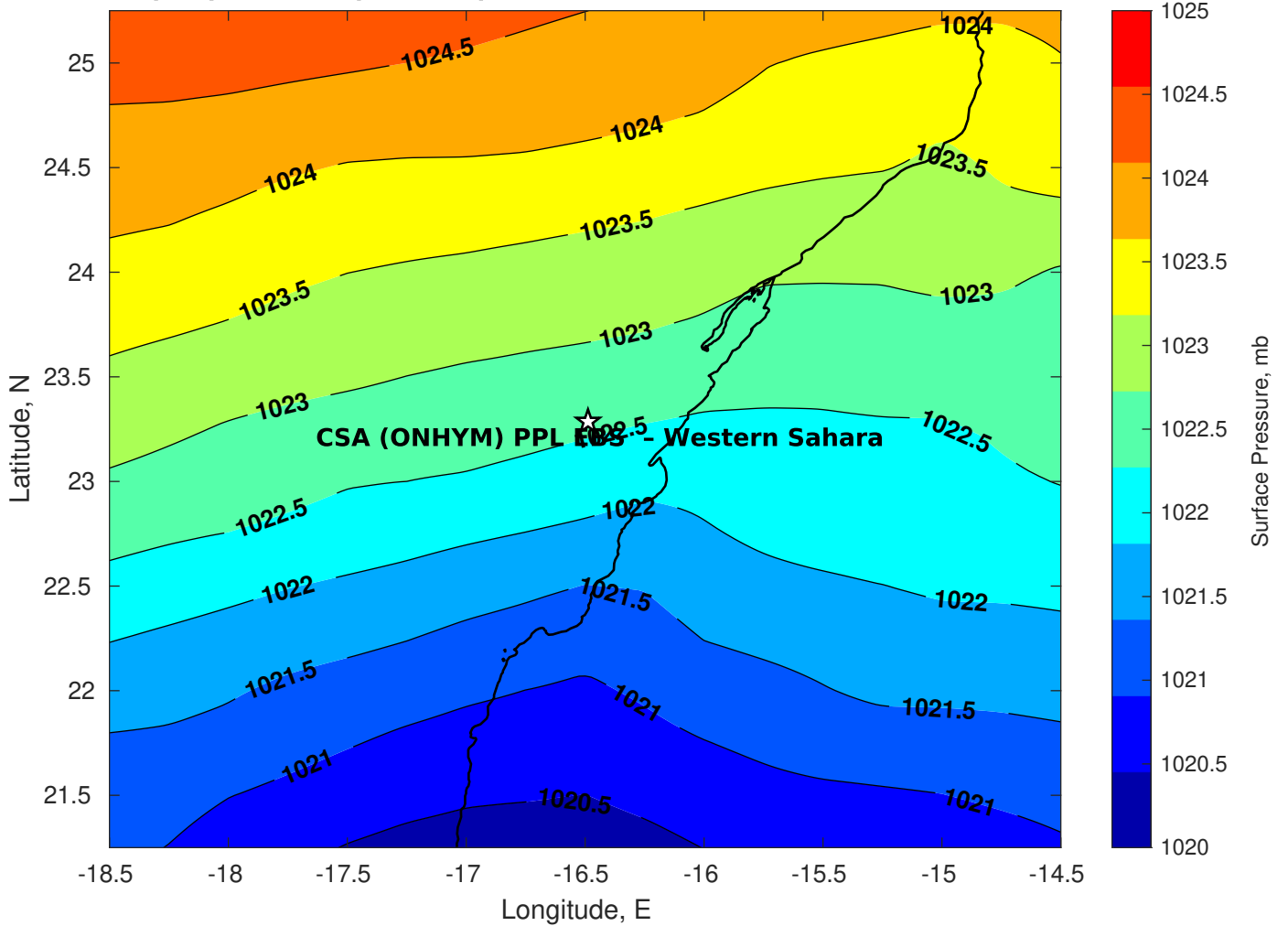




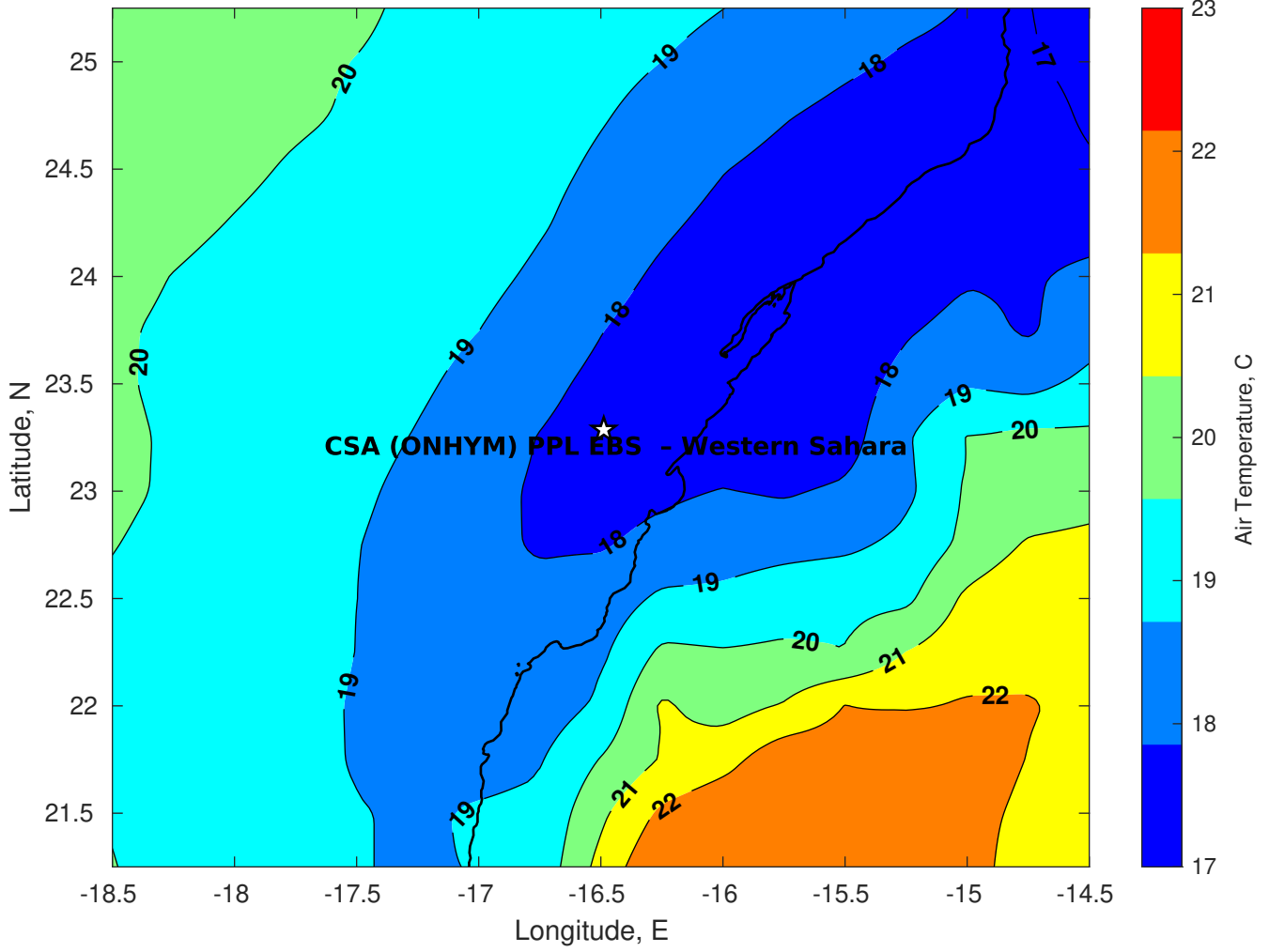
**Surface Pressure (mb) for CSA (ONHYM) PPL EBS - Western Sahara at 25-Feb-2025 00:00:00**



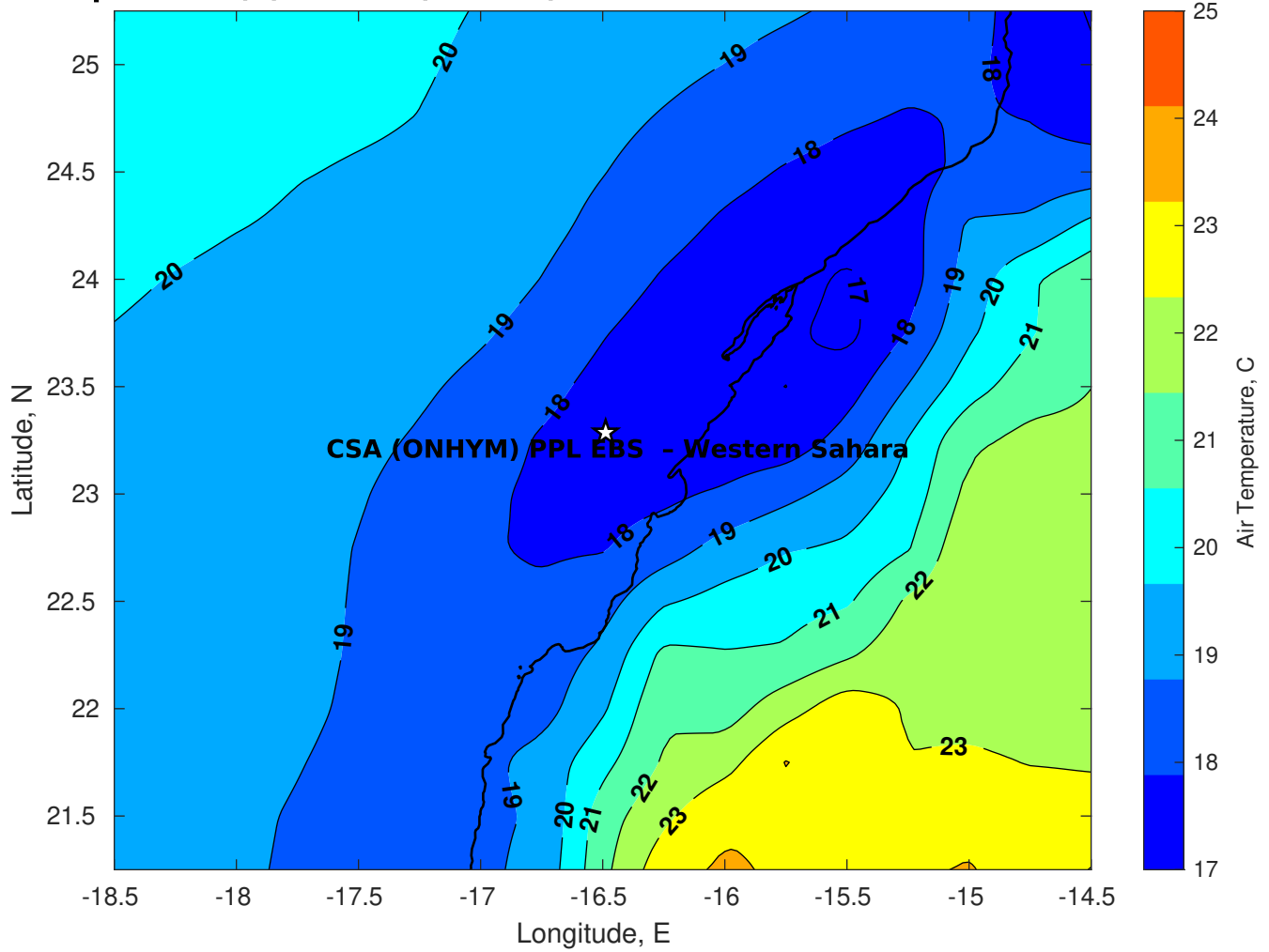
**Surface Pressure (mb) for CSA (ONHYM) PPL EBS - Western Sahara at 26-Feb-2025 00:00:00**



**Air Temperature (C) for CSA (ONHYM) PPL EBS - Western Sahara at 24-Feb-2025**



**Air Temperature (C) for CSA (ONHYM) PPL EBS - Western Sahara at 24-Feb-2025**



**Air Temperature (C) for CSA (ONHYM) PPL EBS - Western Sahara at 24-Feb-2025**

