
Marine Weather Forecast for Shell Noches GC19 PPL Geotechnical
Forecast valid as of 24-Feb-2025 0900 GMT

All times are local.

Today

Winds: W, 10-15 kts.
Waves: NE, 5-6 feet, 6-7 sec.
No currents available.

Tonight

Winds: NE, 10-15 kts.
Waves: E, 4-5 feet, 6-7 sec.
No currents available.

Monday

Winds: NE, 20-25 kts.
Waves: E, 5-6 feet, 6-7 sec.
No currents available.

Tuesday Night

Winds: N, 5-10 kts.
Waves: E, 2-3 feet, 6-7 sec.
No currents available.

Tuesday

Winds: N, 5-10 kts.
Waves: E, 3-4 feet, 6-7 sec.
No currents available.

Wednesday Night

Winds: NE, 10-15 kts.
Waves: NE, 1-2 feet, 4-5 sec.
No currents available.

Wednesday

Winds: NE, 10-15 kts.
Waves: E, 2-3 feet, 5-6 sec.
No currents available.

Thursday Night

Winds: NE, 20-25 kts.
Waves: NE, 4-5 feet, 5-6 sec.
No currents available.

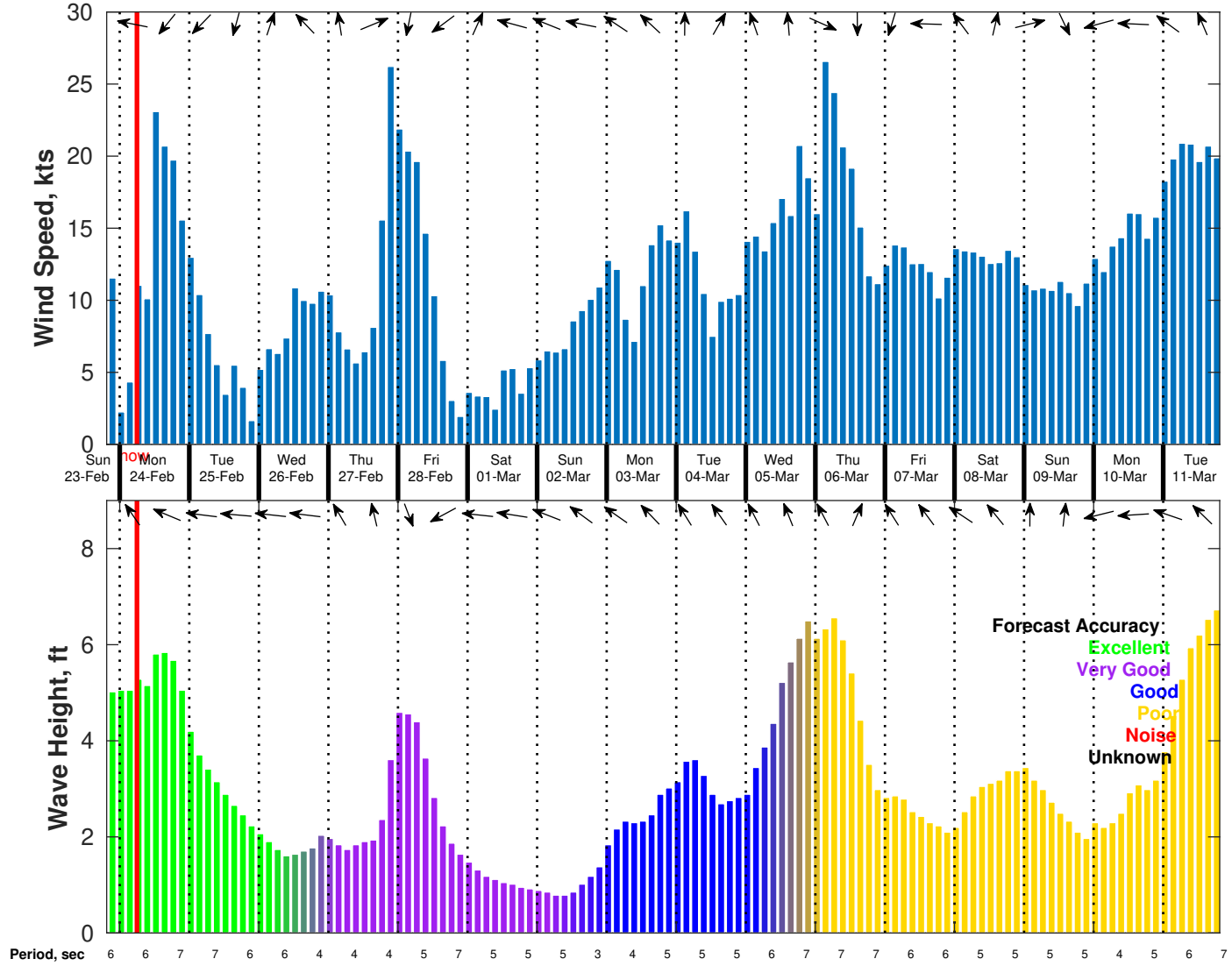
Thursday

Winds: N, 25-30 kts.
Waves: N, 3-4 feet, 4-5 sec.
No currents available.

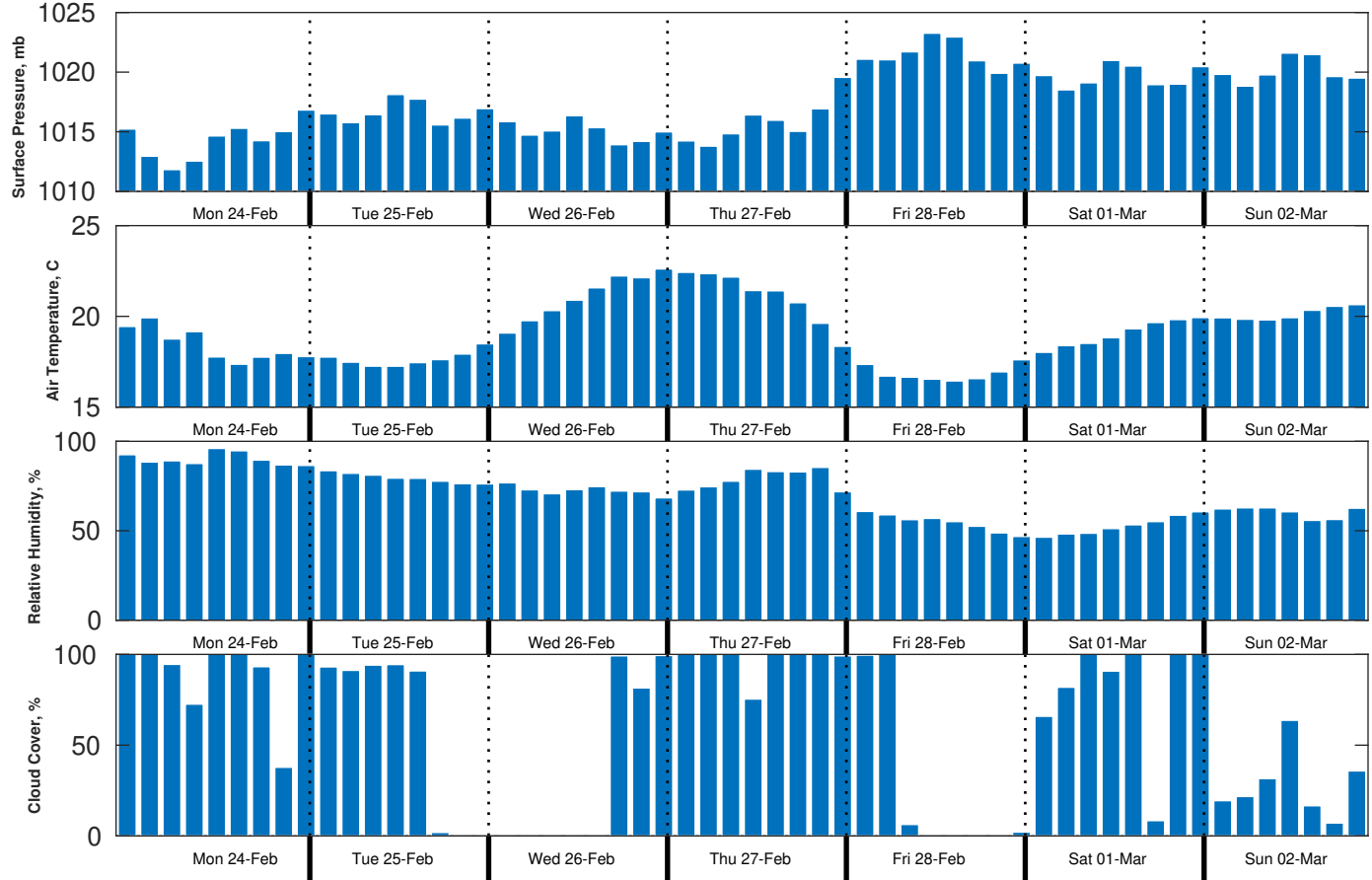
Friday Night

Winds: N, less than 5 kts.
Waves: E, 1-2 feet, 6-7 sec.
No currents available.

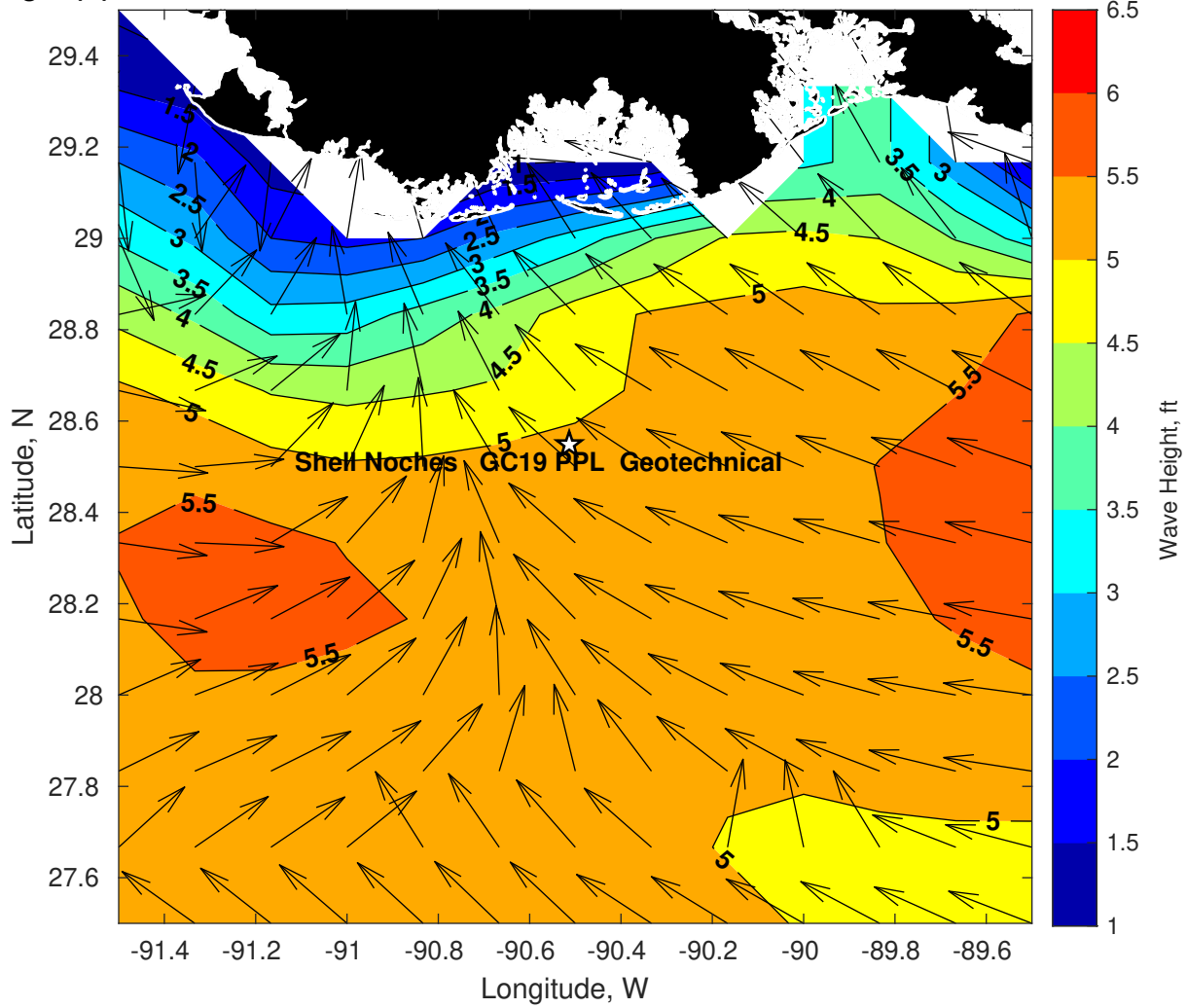
Wind & Wave Forecast for Shell Noches GC19 PPL Geotechnical from 23-Feb-2025 20:00:00 to 11-Mar-2025 20:00:00



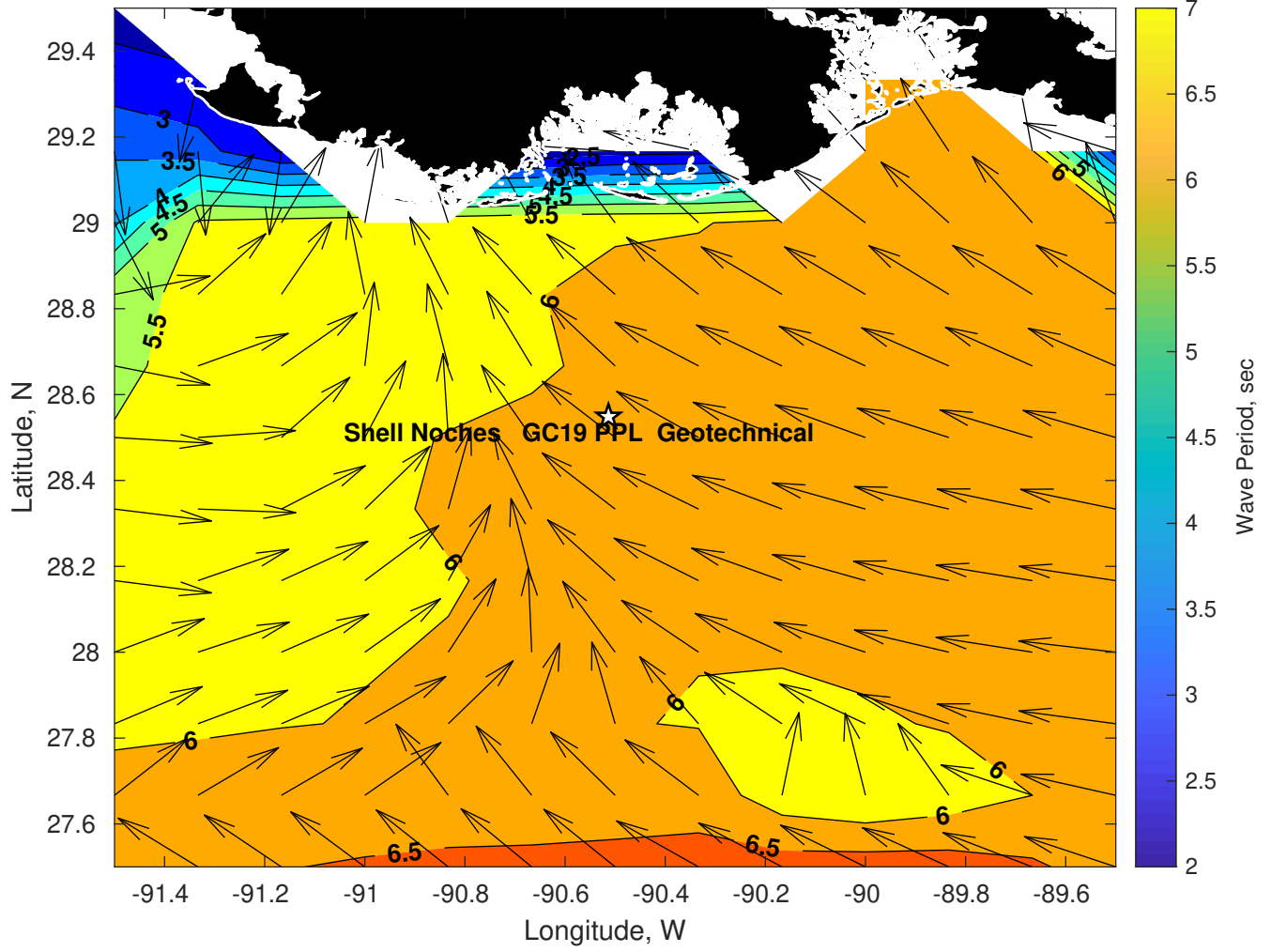
Met Forecast for Shell Noches GC19 PPL Geotechnical from 24-Feb-2025 00:00:00 to 03-Mar-2025 00:00:00



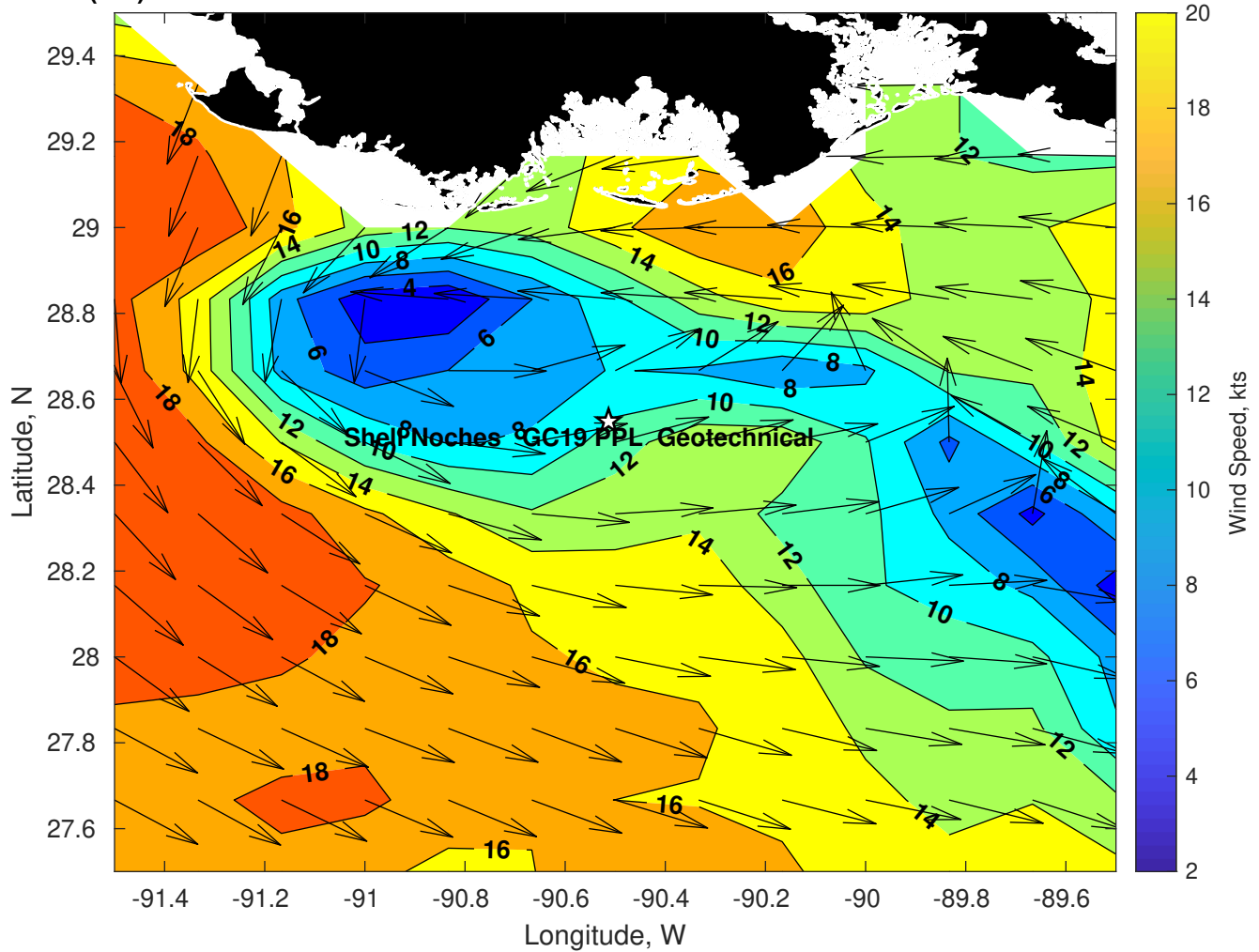
Wave Height (ft) for Shell Noches GC19 PPL Geotechnical at 24-Feb-2025 09:00:00



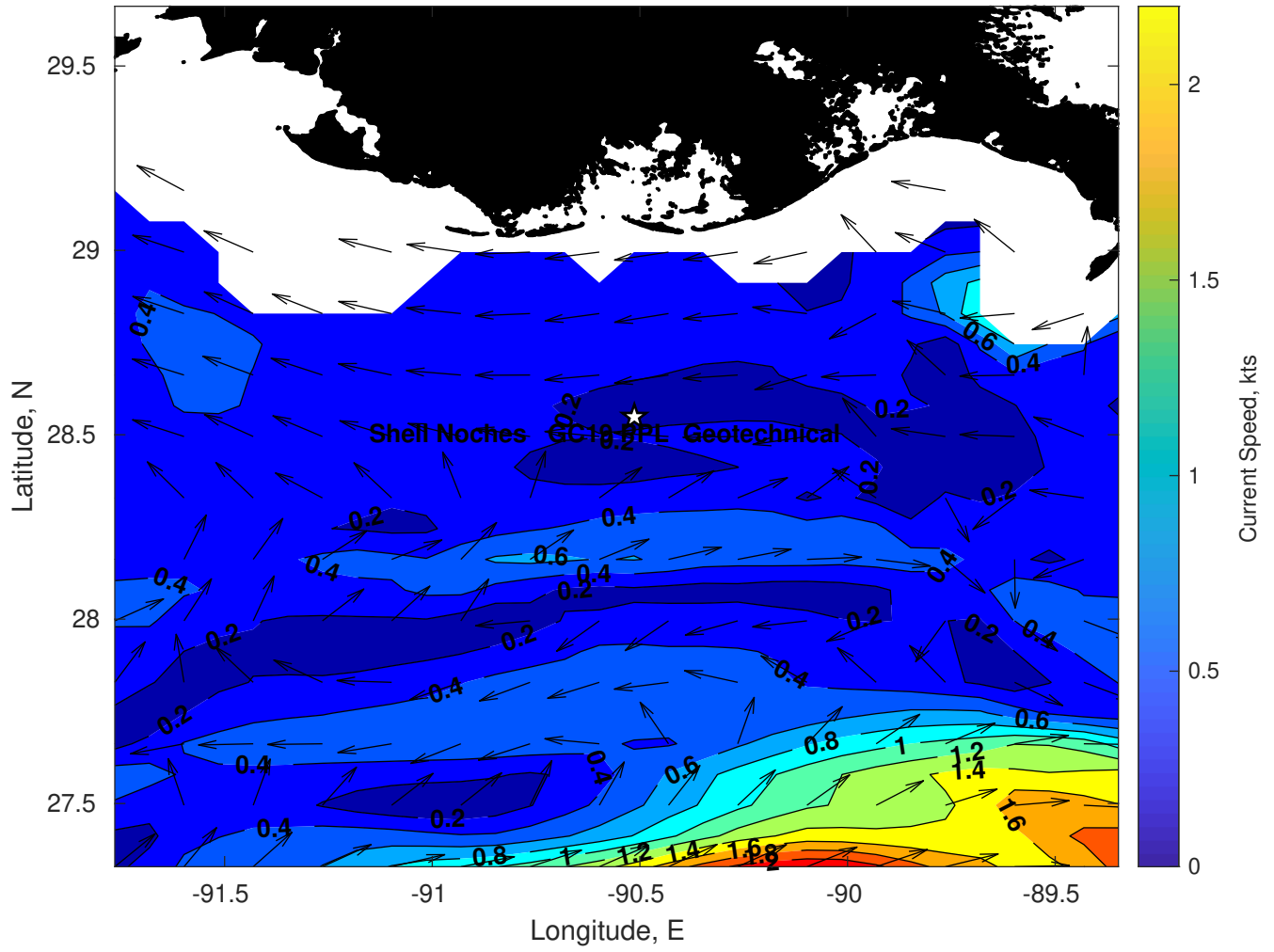
Wave Period (sec) for Shell Noches GC19 PPL Geotechnical at 24-Feb-2025 09:00:00



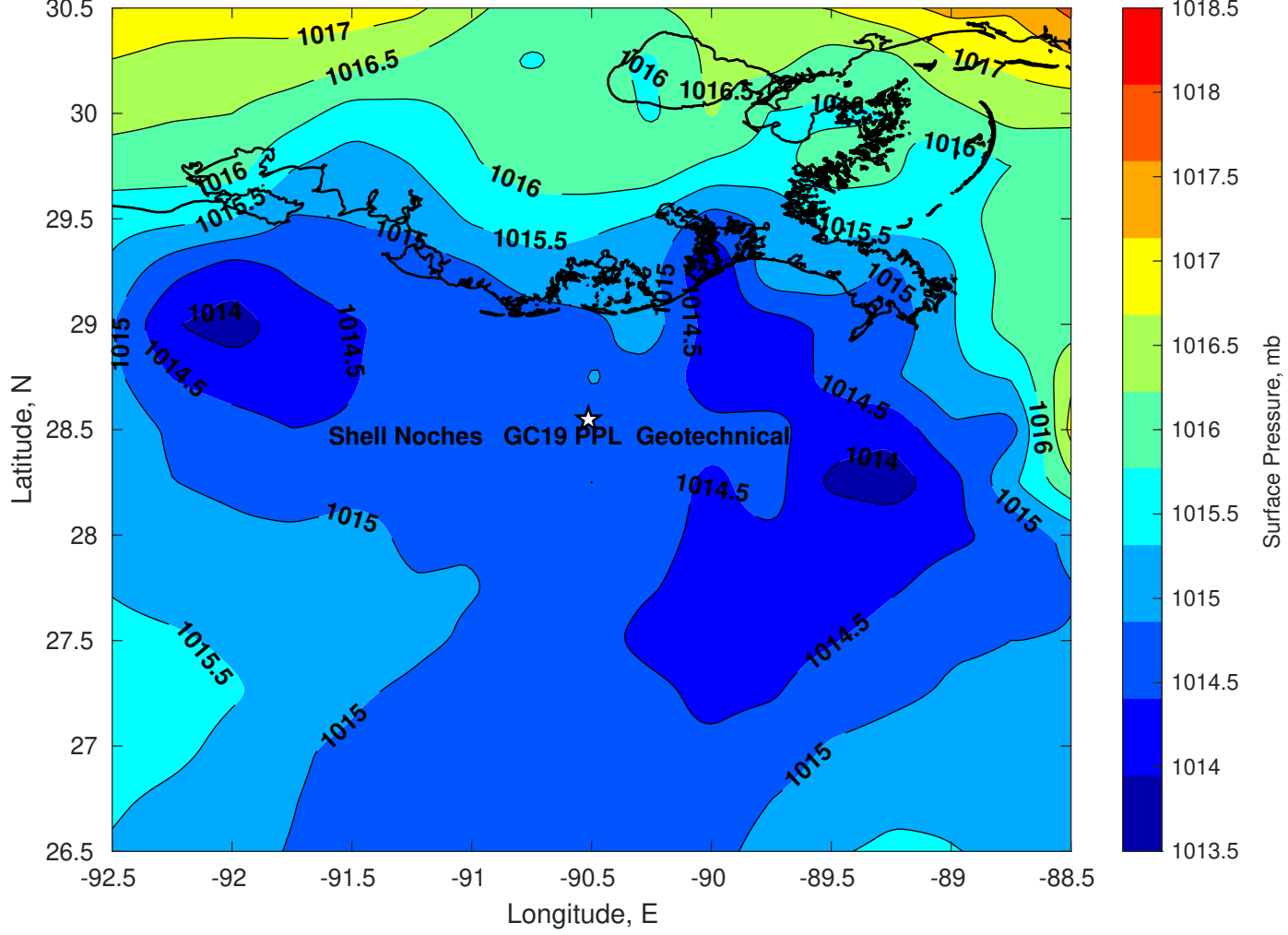
Winds (kts) for Shell Noches GC19 PPL Geotechnical at 24-Feb-2025 09:00:00



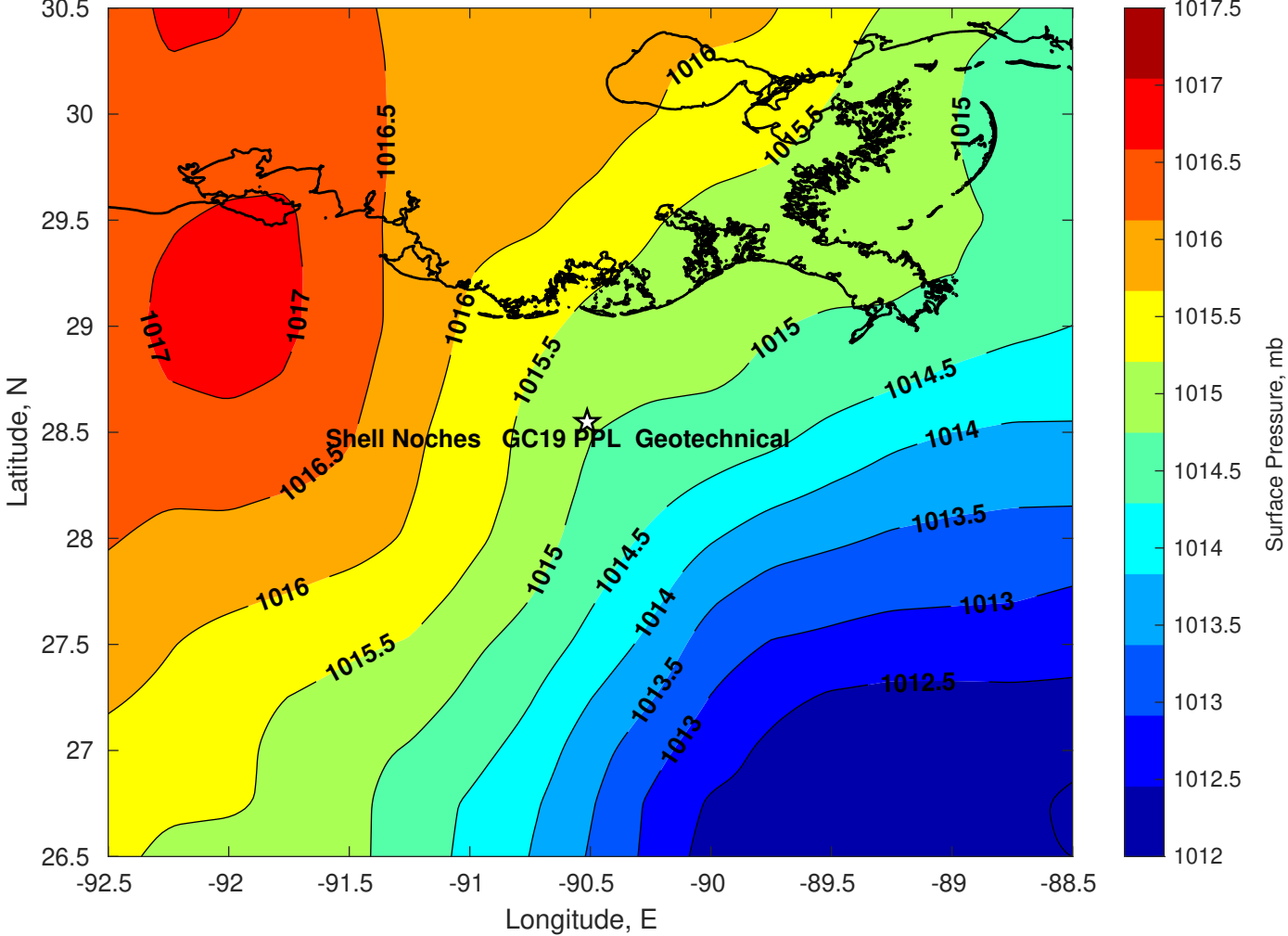
Surface Currents for Shell Noches GC19 PPL Geotechnical at 23-Feb-2025 00:00:00



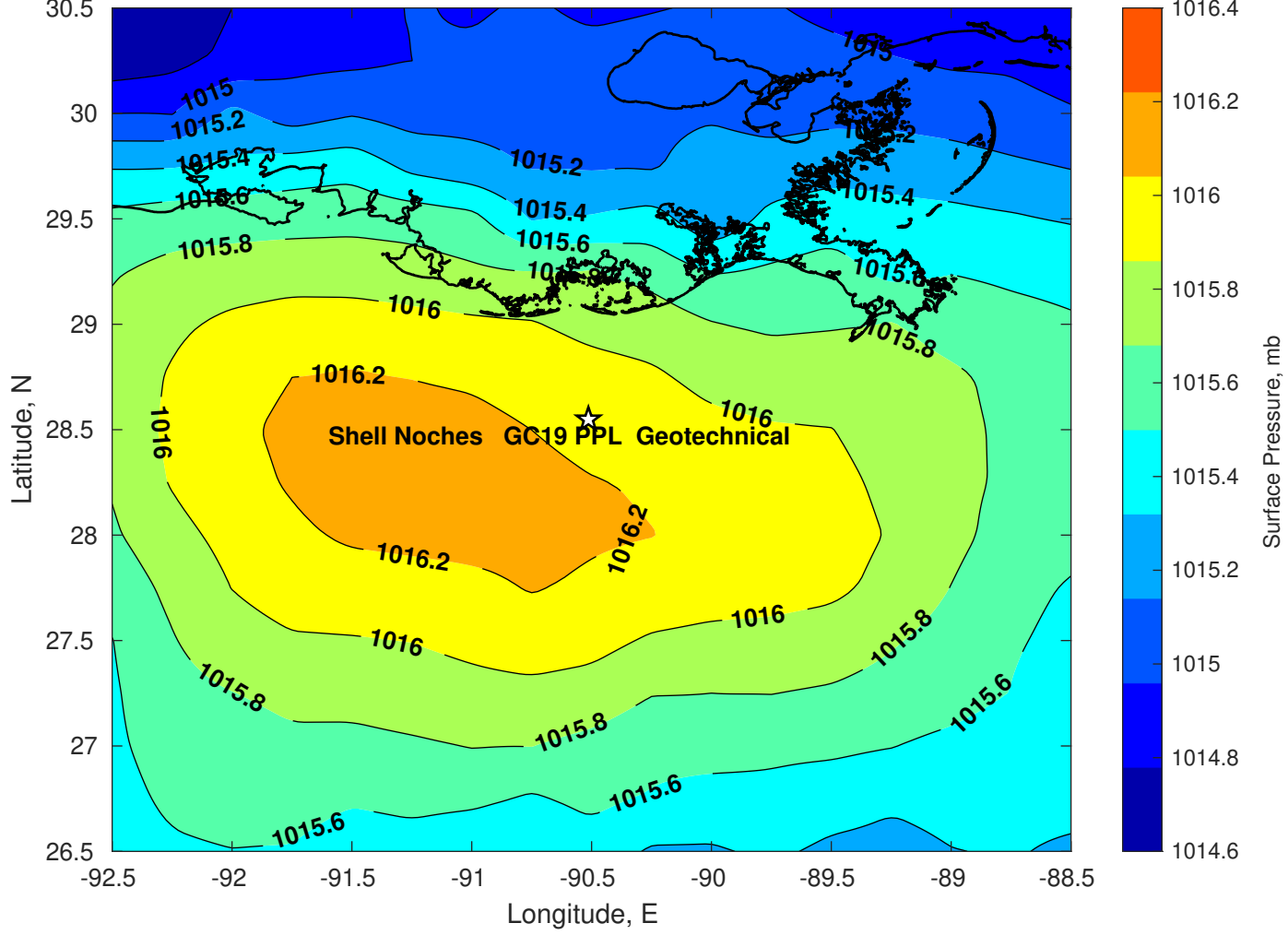
Surface Pressure (mb) for Shell Noches GC19 PPL Geotechnical at 24-Feb-2025 00:00:00



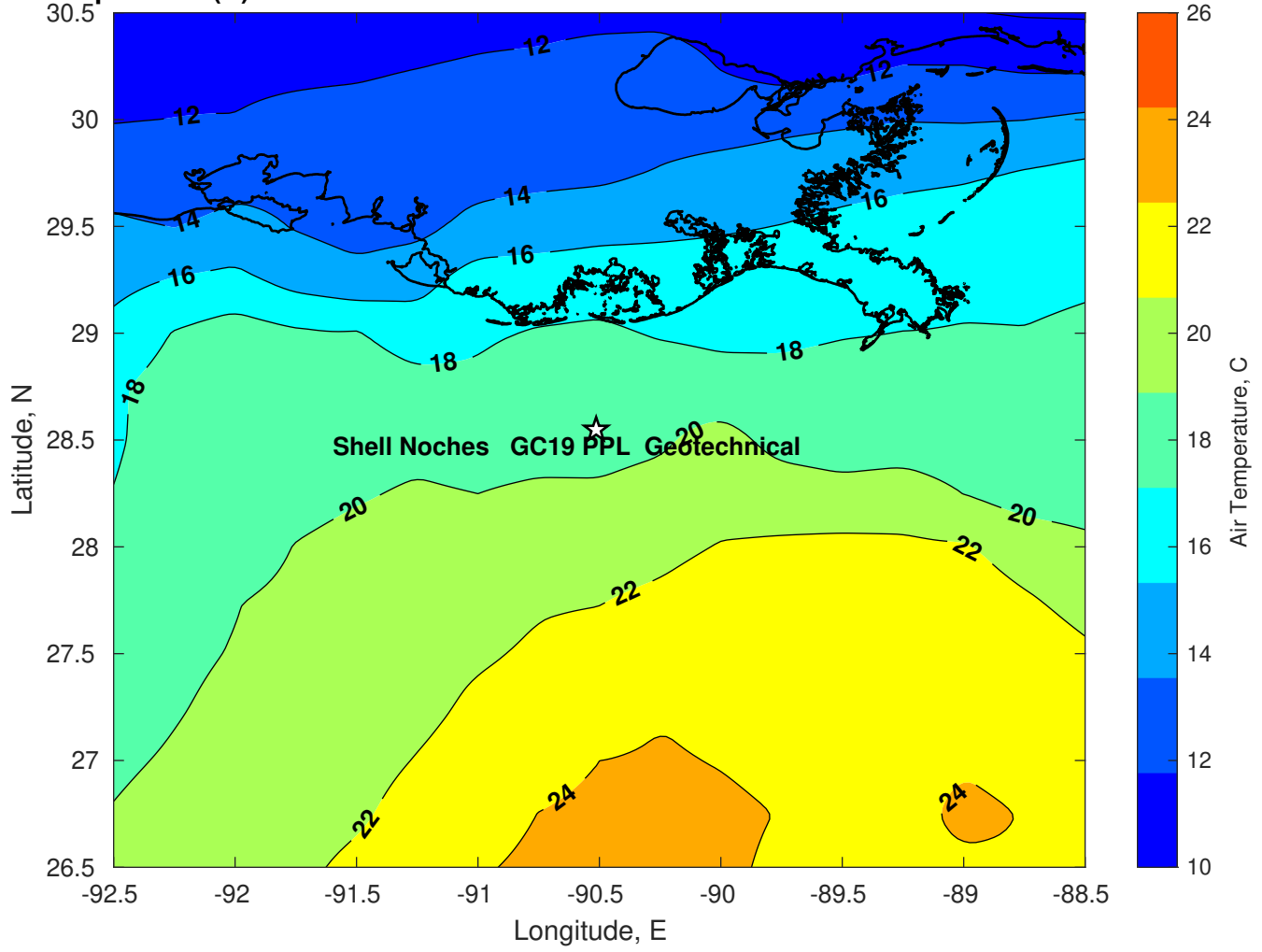
Surface Pressure (mb) for Shell Noches GC19 PPL Geotechnical at 25-Feb-2025 00:00:00



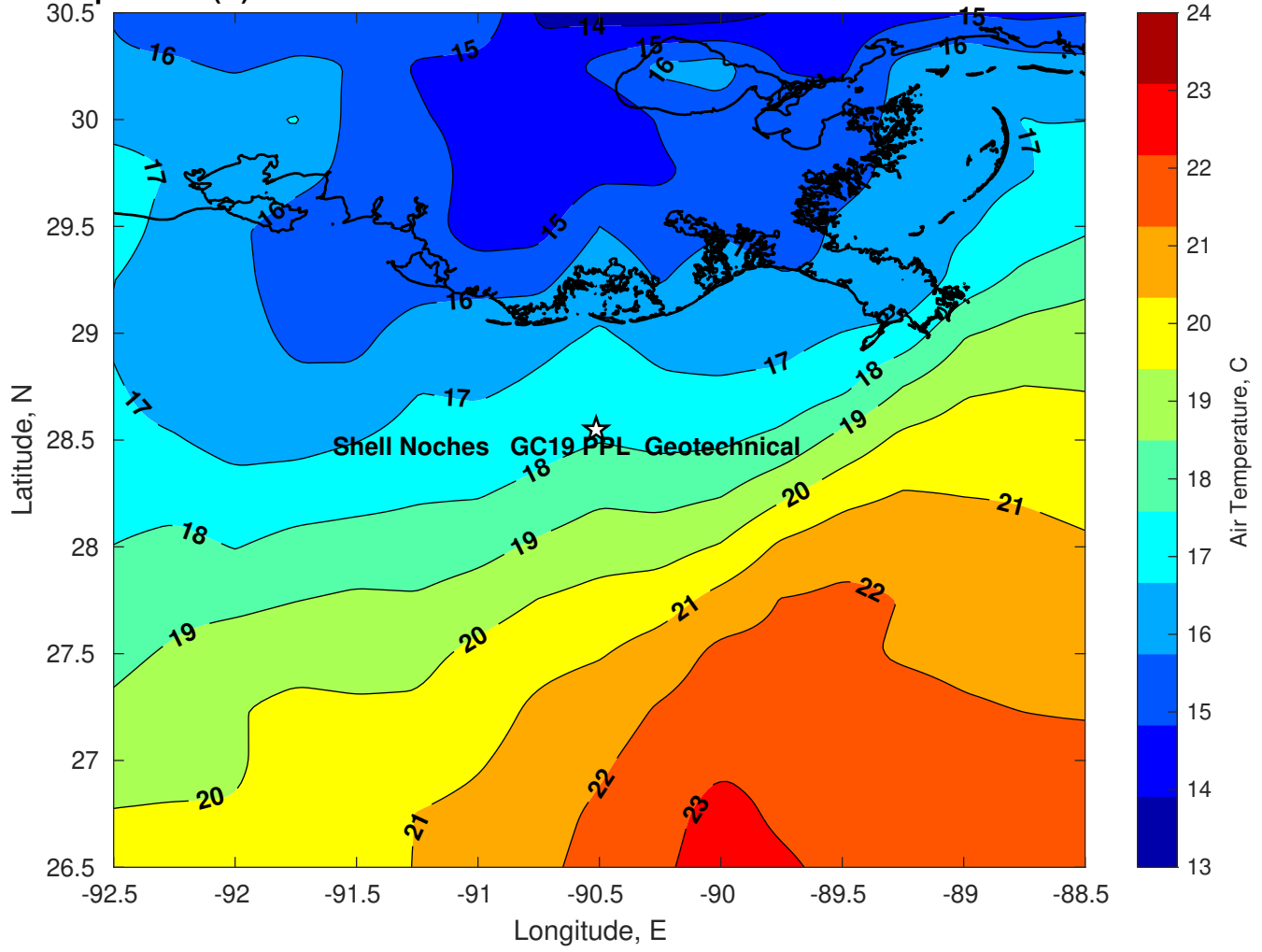
Surface Pressure (mb) for Shell Noches GC19 PPL Geotechnical at 26-Feb-2025 00:00:00



Air Temperature (C) for Shell Noches GC19 PPL Geotechnical at 24-Feb-2025



Air Temperature (C) for Shell Noches GC19 PPL Geotechnical at 24-Feb-2025



Air Temperature (C) for Shell Noches GC19 PPL Geotechnical at 24-Feb-2025

