
Marine Weather Forecast for TOTAL Namibia GTS

Forecast valid as of 24-Feb-2025 0900 GMT

All times are local.

Today

Winds: NE, 20-25 kts.

Waves: NW, 9-10 feet, 12-13 sec.

No currents available.

Tonight

Winds: NE, 20-25 kts.

Waves: NW, 10-11 feet, 12-13 sec.

No currents available.

Tuesday

Winds: NE, 20-25 kts.

Waves: NW, 10-11 feet, 16-17 sec.

No currents available.

Tuesday Night

Winds: N, 20-25 kts.

Waves: NW, 10-11 feet, 15-16 sec.

No currents available.

Wednesday

Winds: N, 15-20 kts.

Waves: NW, 10-11 feet, 14-15 sec.

No currents available.

Wednesday Night

Winds: N, 20-25 kts.

Waves: N, 8-9 feet, 13-14 sec.

No currents available.

Thursday

Winds: N, 15-20 kts.

Waves: N, 8-9 feet, 9-10 sec.

No currents available.

Thursday Night

Winds: N, 15-20 kts.

Waves: N, 7-8 feet, 16-17 sec.

No currents available.

Friday

Winds: N, 15-20 kts.

Waves: N, 6-7 feet, 16-17 sec.

No currents available.

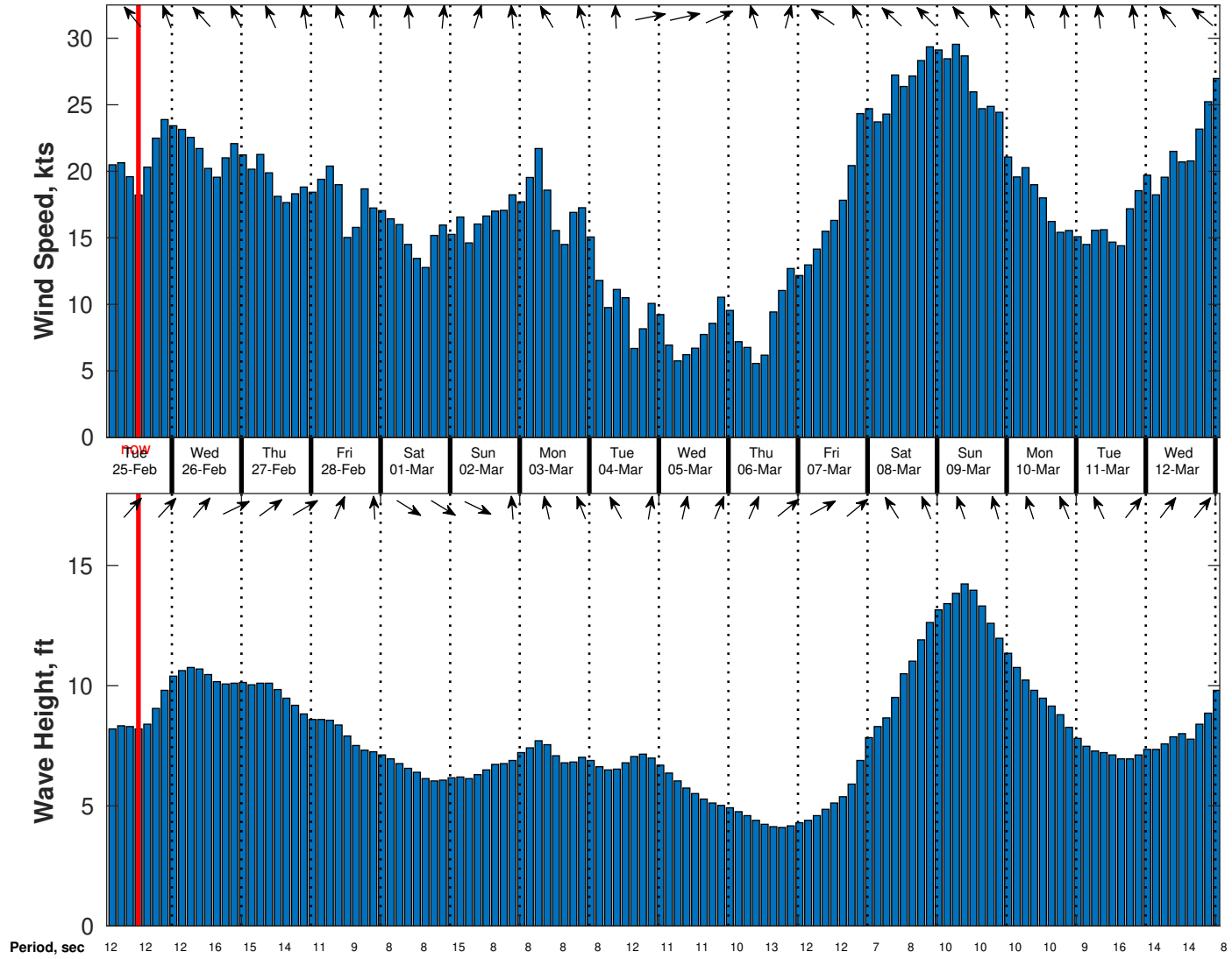
Friday Night

Winds: N, 15-20 kts.

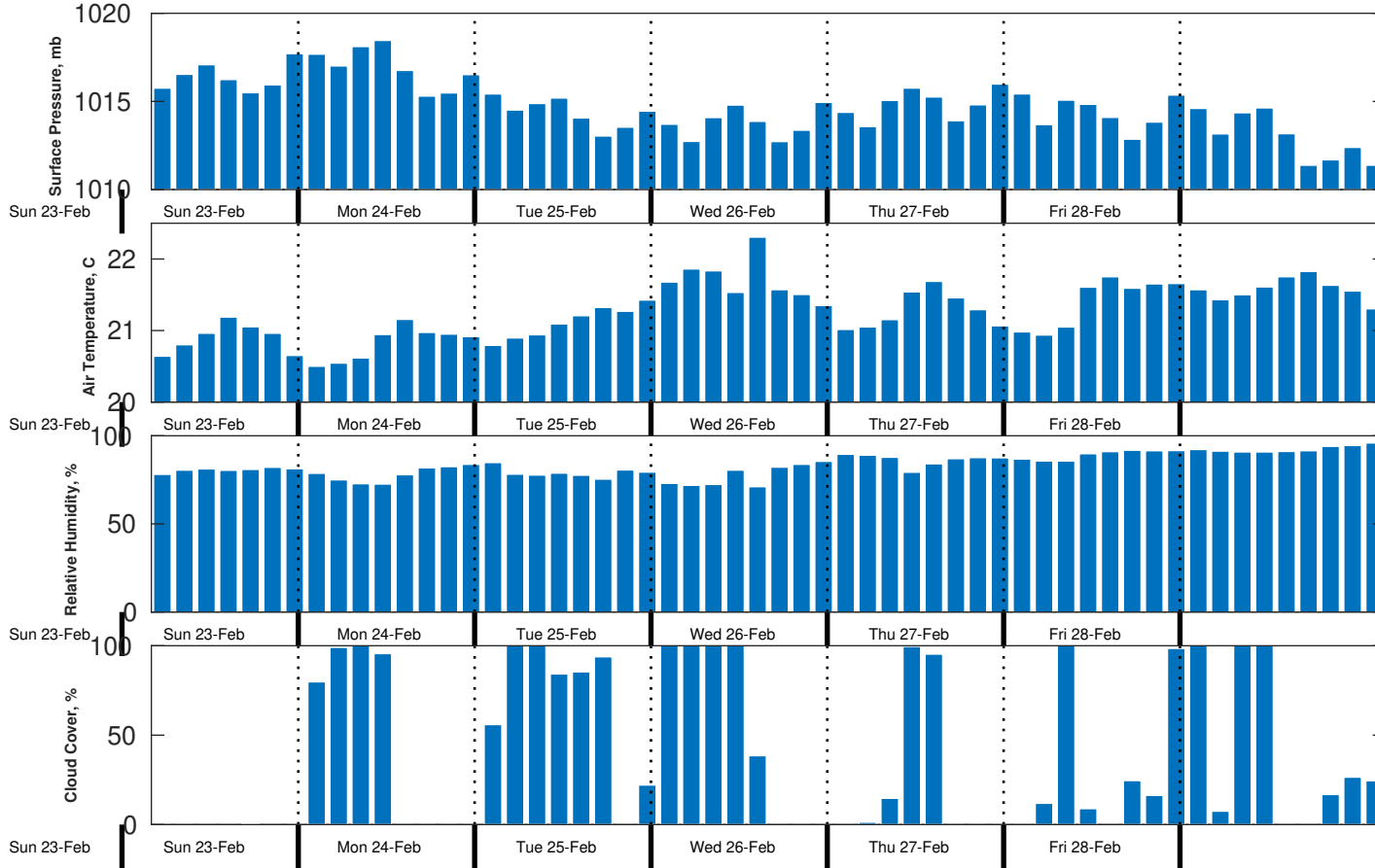
Waves: NW, 6-7 feet, 15-16 sec.

No currents available.

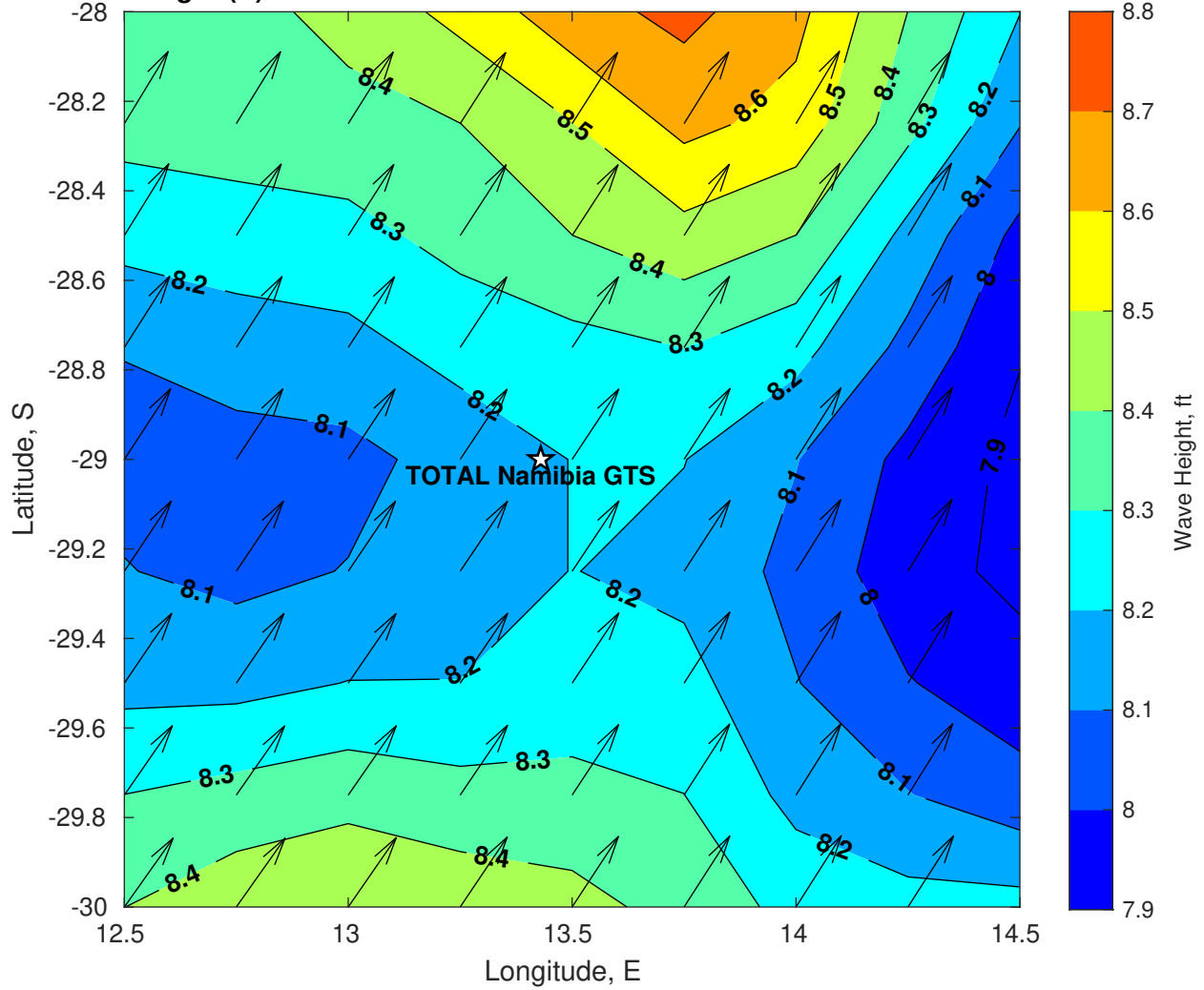
Wind & Wave Forecast for TOTAL Namibia GTS from 24-Feb-2025 02:00:00 to 12-Mar-2025 02:00:00



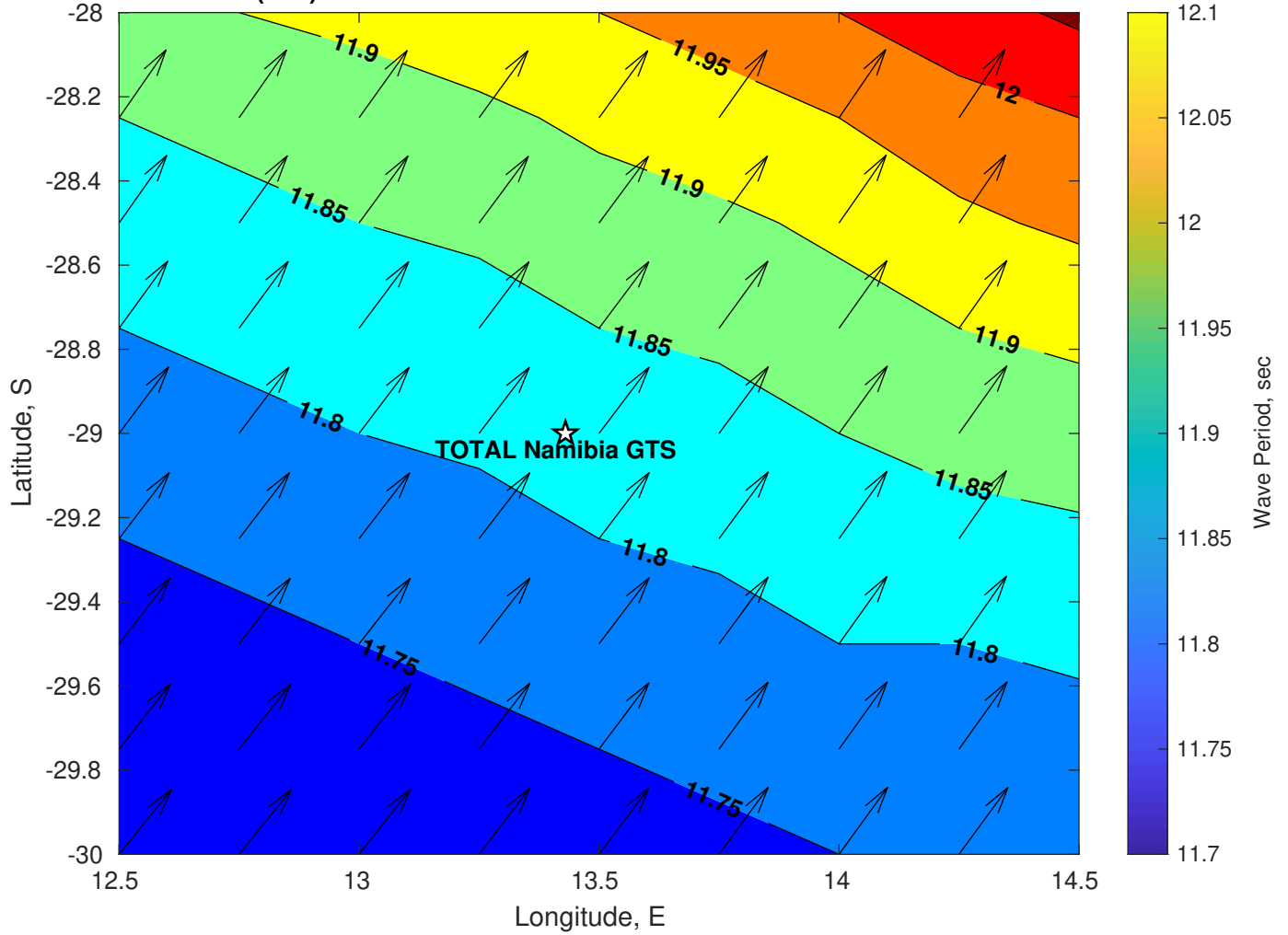
Met Forecast for TOTAL Namibia GTS from 24-Feb-2025 00:00:00 to 03-Mar-2025 00:00:00



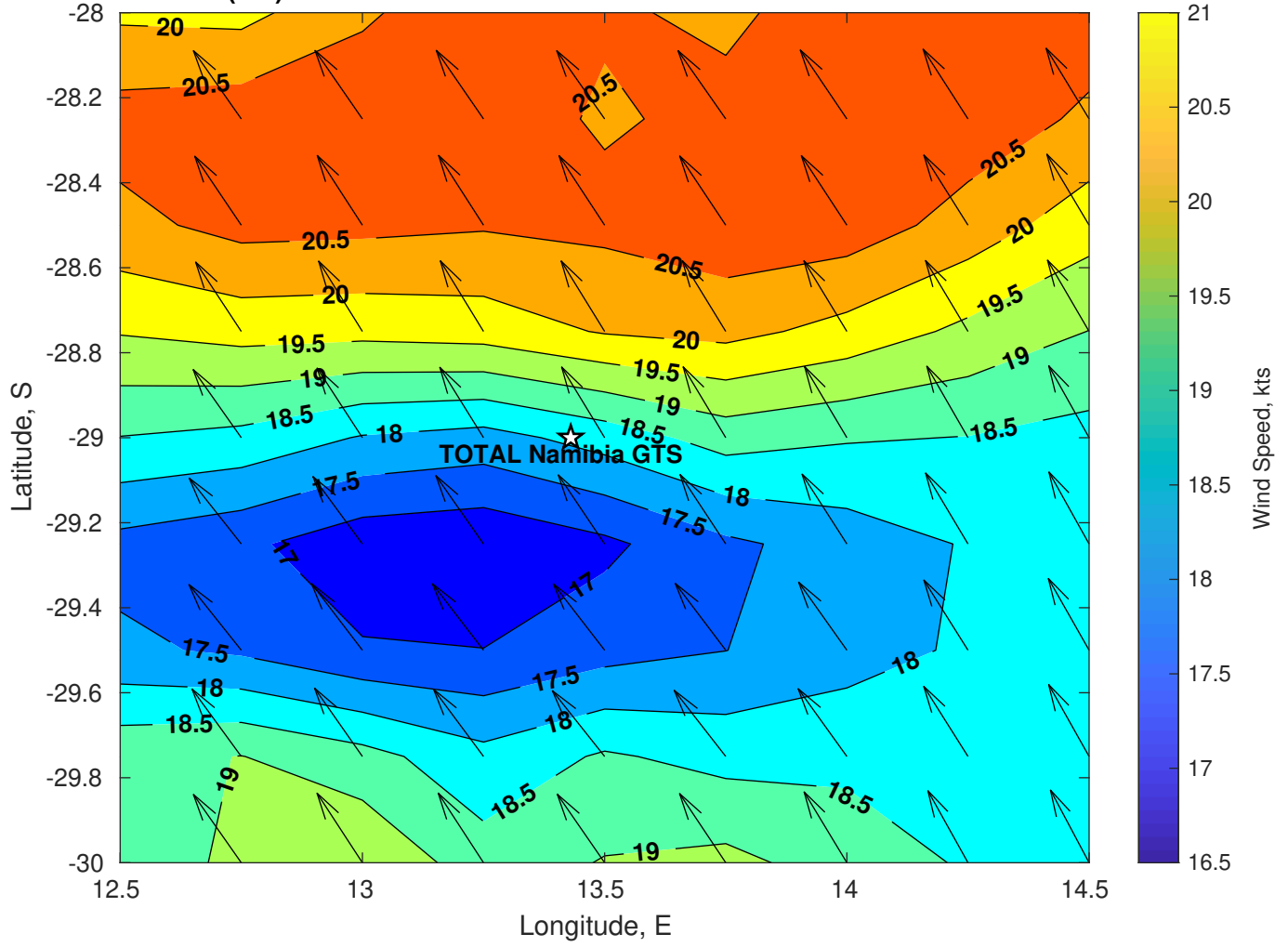
Wave Height (ft) for TOTAL Namibia GTS at 24-Feb-2025 09:00:00



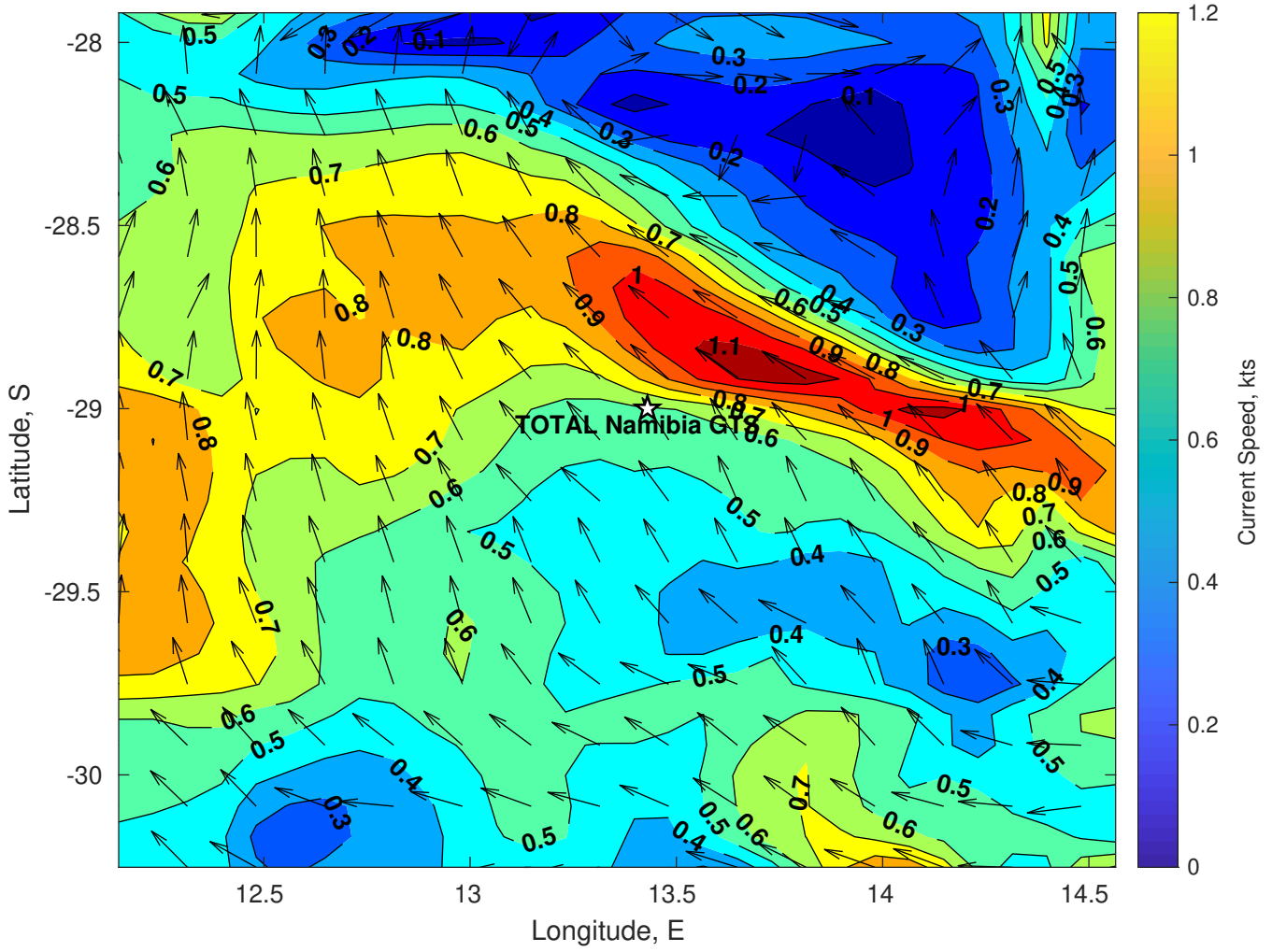
Wave Period (sec) for TOTAL Namibia GTS at 24-Feb-2025 09:00:00



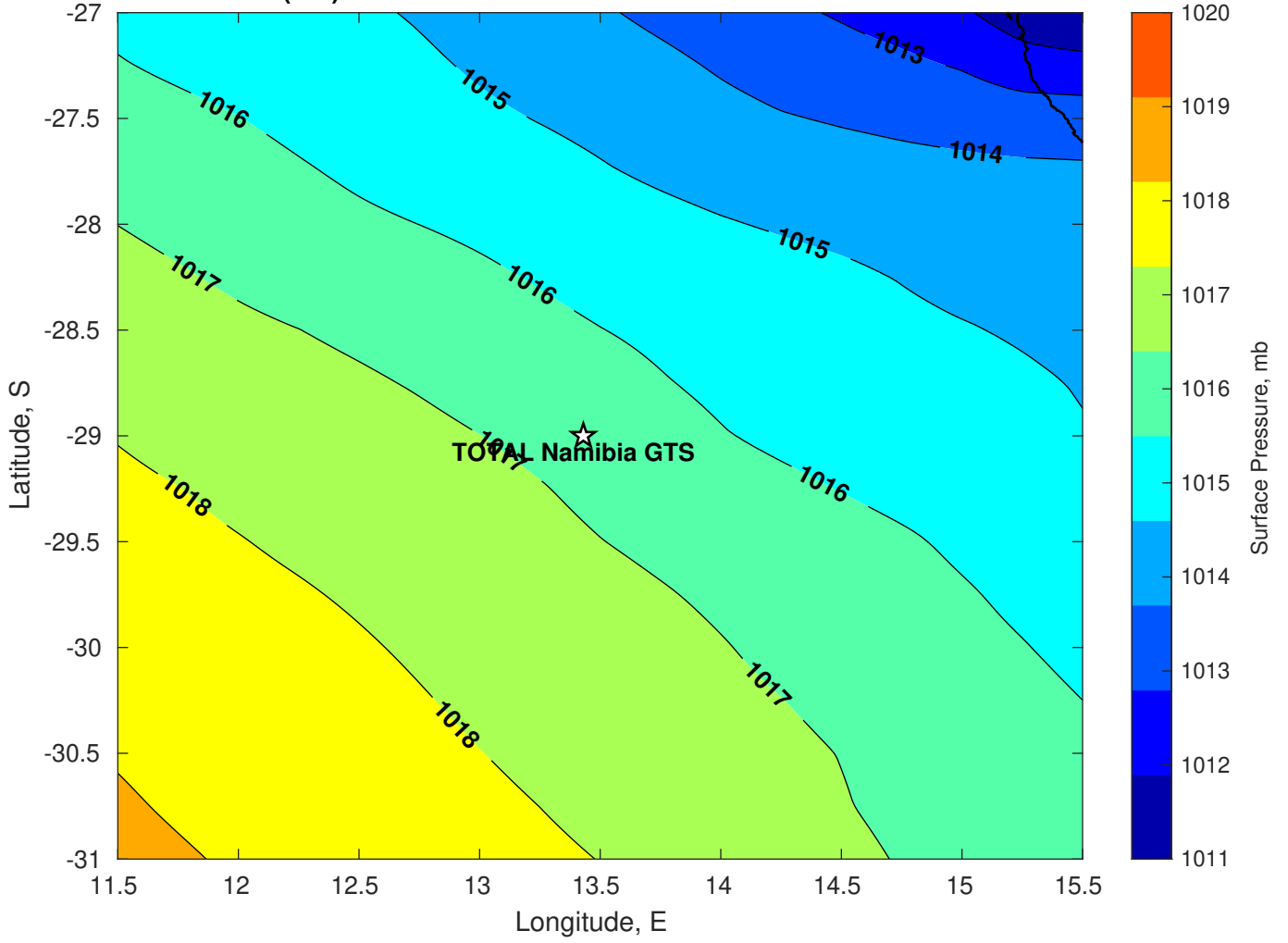
Winds (kts) for TOTAL Namibia GTS at 24-Feb-2025 09:00:00



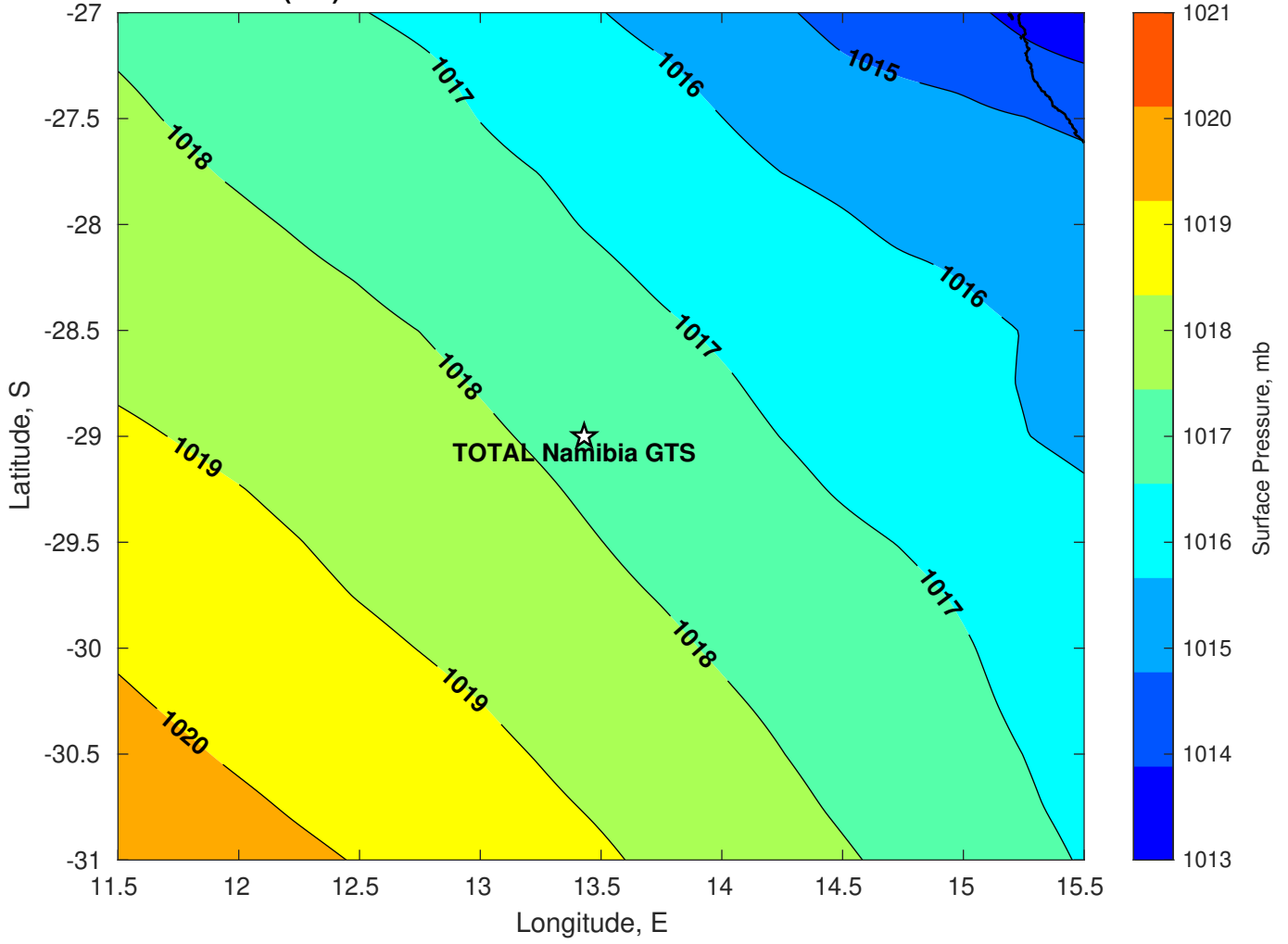
Surface Currents for TOTAL Namibia GTS at 23-Feb-2025 00:00:00



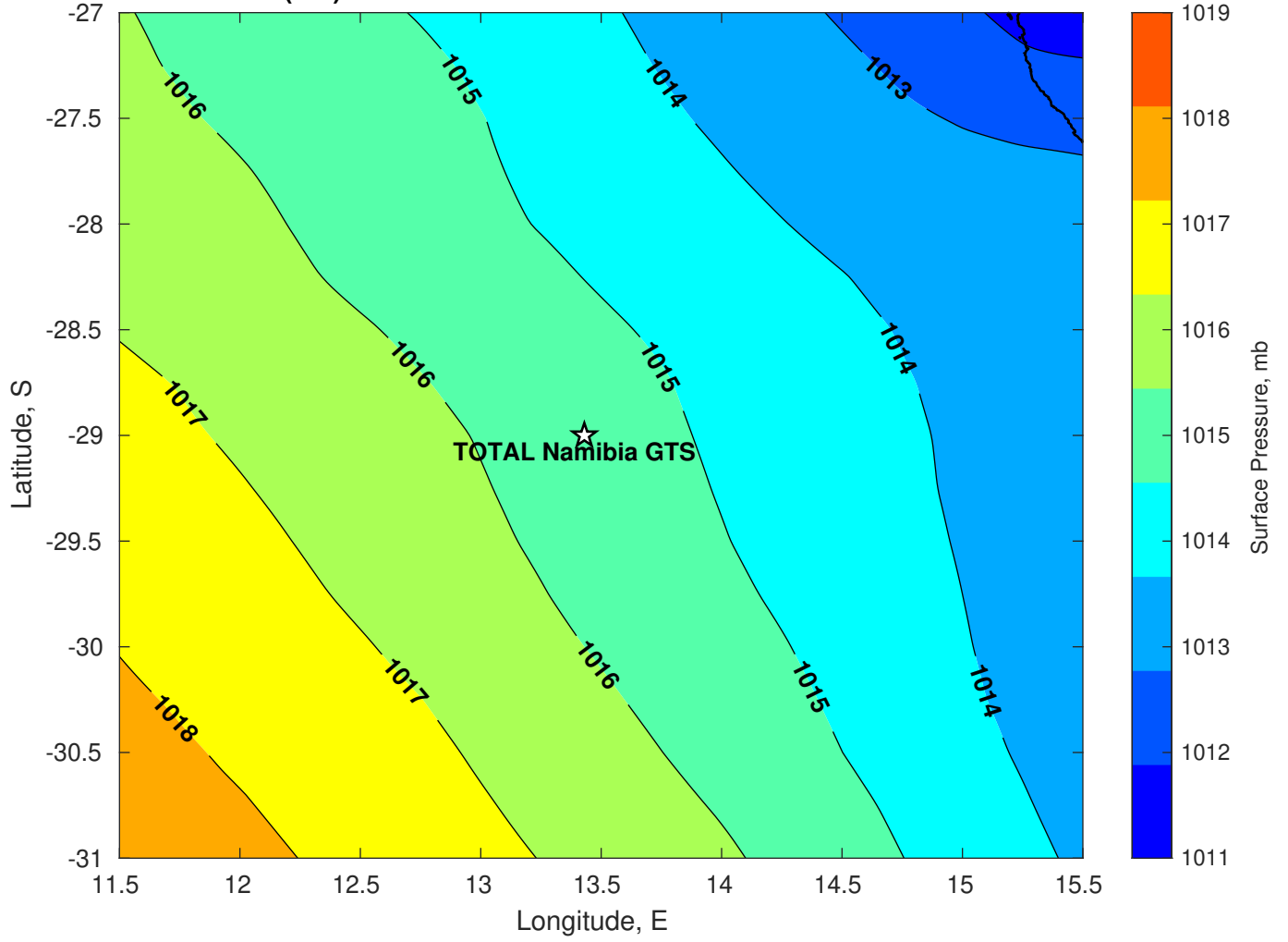
Surface Pressure (mb) for TOTAL Namibia GTS at 24-Feb-2025 00:00:00



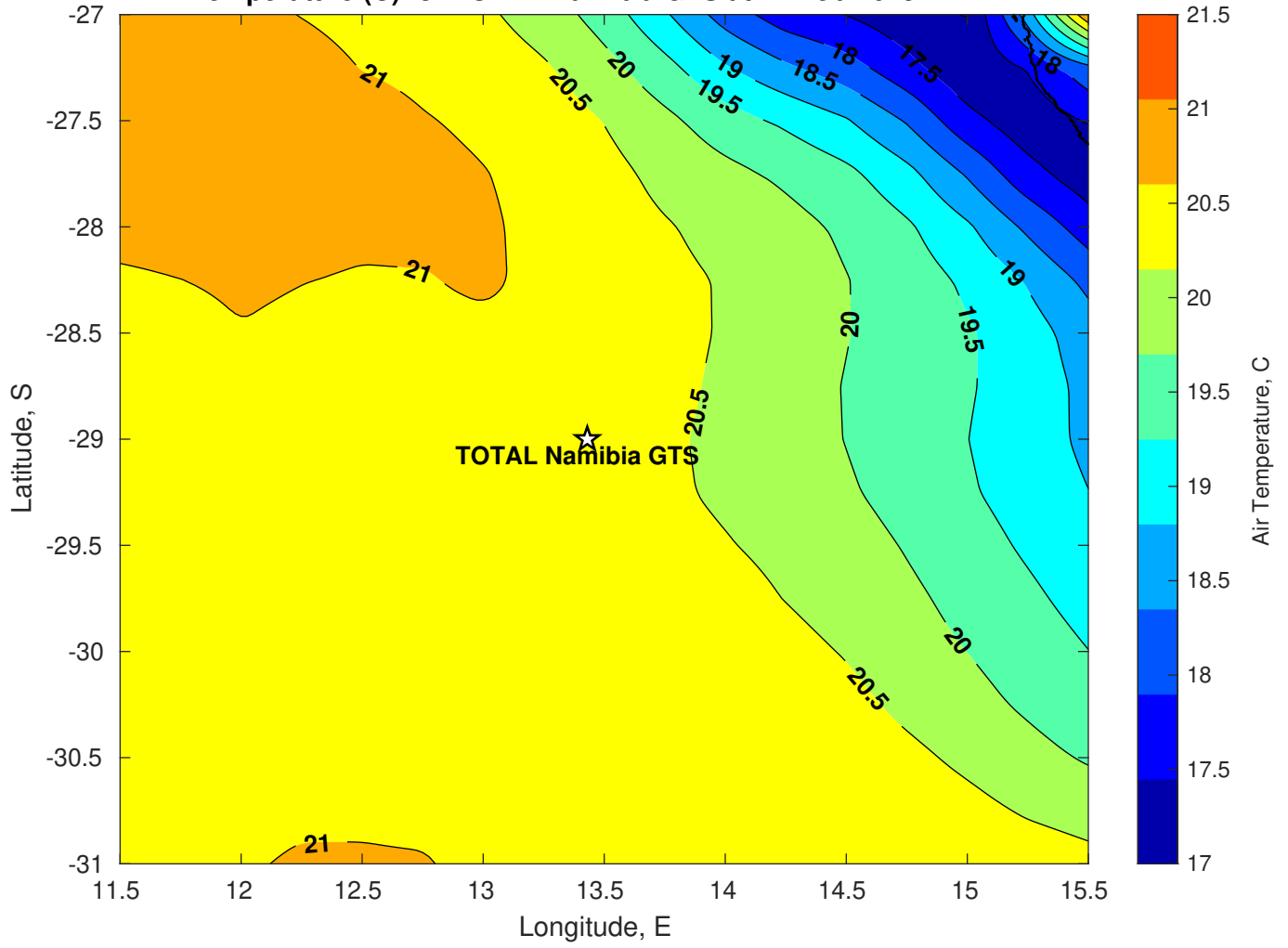
Surface Pressure (mb) for TOTAL Namibia GTS at 25-Feb-2025 00:00:00



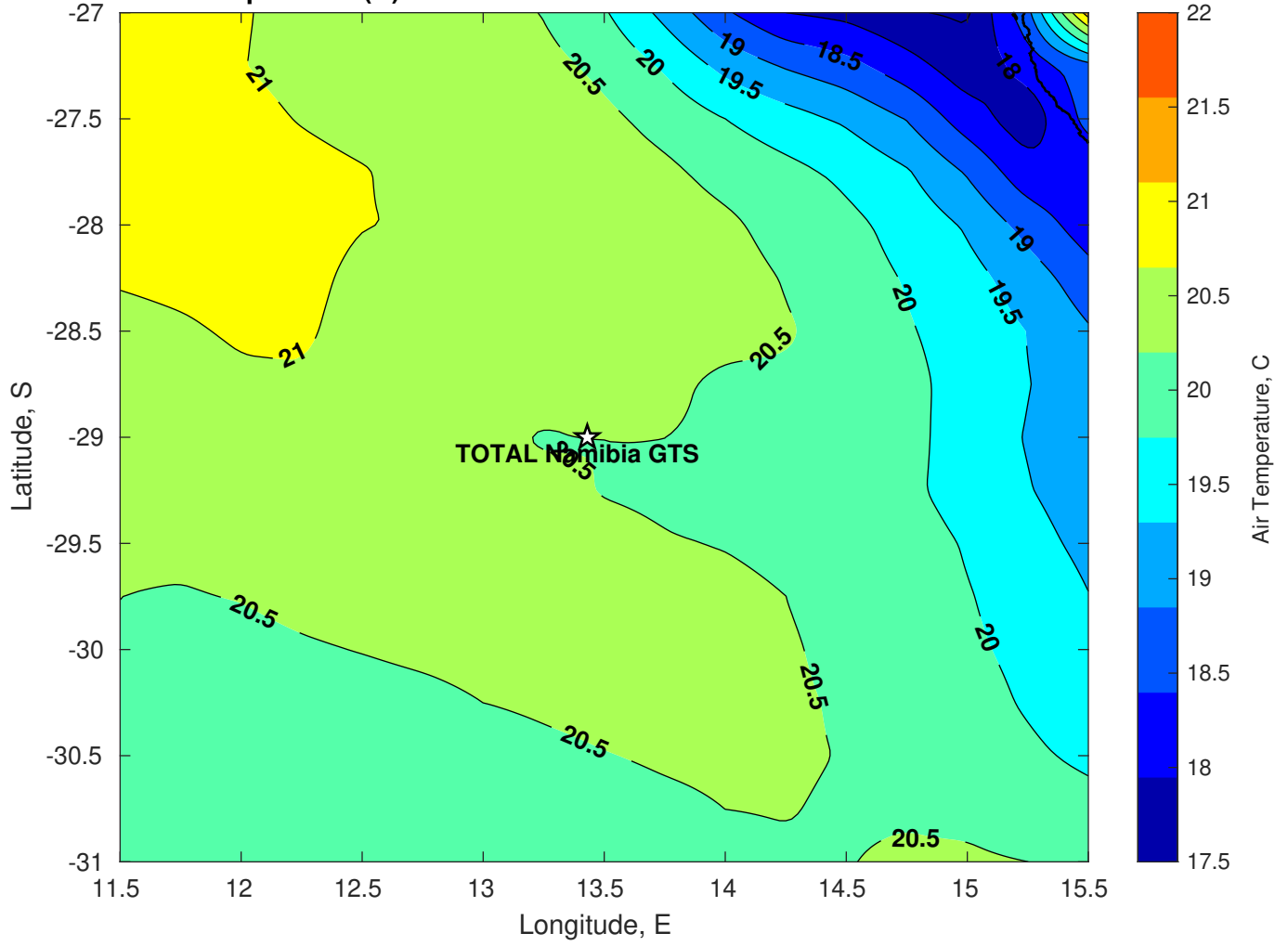
Surface Pressure (mb) for TOTAL Namibia GTS at 26-Feb-2025 00:00:00



Air Temperature (C) for TOTAL Namibia GTS at 24-Feb-2025



Air Temperature (C) for TOTAL Namibia GTS at 24-Feb-2025



Air Temperature (C) for TOTAL Namibia GTS at 24-Feb-2025

