

\*\*\*\*\*

Marine Weather Forecast for CSA (ONHYM) PPL EBS - Nigeria

Forecast valid as of 25-Feb-2025 0900 GMT

\*\*\*\*\*

All times are local.

Today

Winds: NW, 10-15 kts.

Waves: NW, 2-3 feet, 10-11 sec.

No currents available.

Tonight

Winds: N, 10-15 kts.

Waves: NW, 3-4 feet, 13-14 sec.

No currents available.

Wednesday

Winds: NW, 10-15 kts.

Waves: NW, 3-4 feet, 20-21 sec.

No currents available.

Wednesday Night

Winds: NW, 10-15 kts.

Waves: NW, 3-4 feet, 19-20 sec.

No currents available.

Thursday

Winds: NE, 10-15 kts.

Waves: NW, 3-4 feet, 18-19 sec.

No currents available.

Thursday Night

Winds: NW, 10-15 kts.

Waves: NW, 3-4 feet, 16-17 sec.

No currents available.

Friday

Winds: NW, 10-15 kts.

Waves: NW, 3-4 feet, 16-17 sec.

No currents available.

Friday Night

Winds: NW, 10-15 kts.

Waves: NW, 3-4 feet, 15-16 sec.

No currents available.

Saturday

Winds: NW, 10-15 kts.

Waves: NW, 3-4 feet, 14-15 sec.

No currents available.

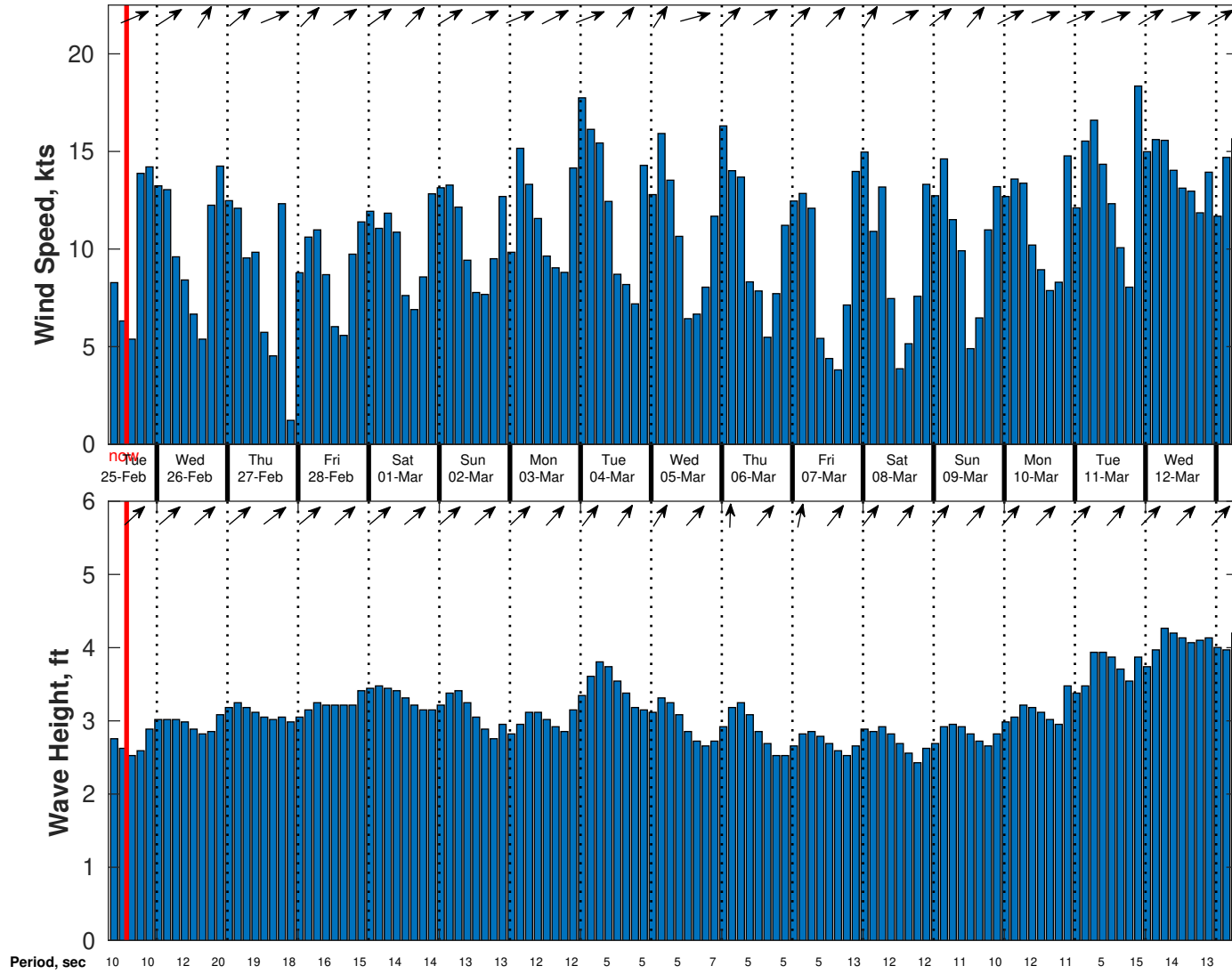
Saturday Night

Winds: NW, 10-15 kts.

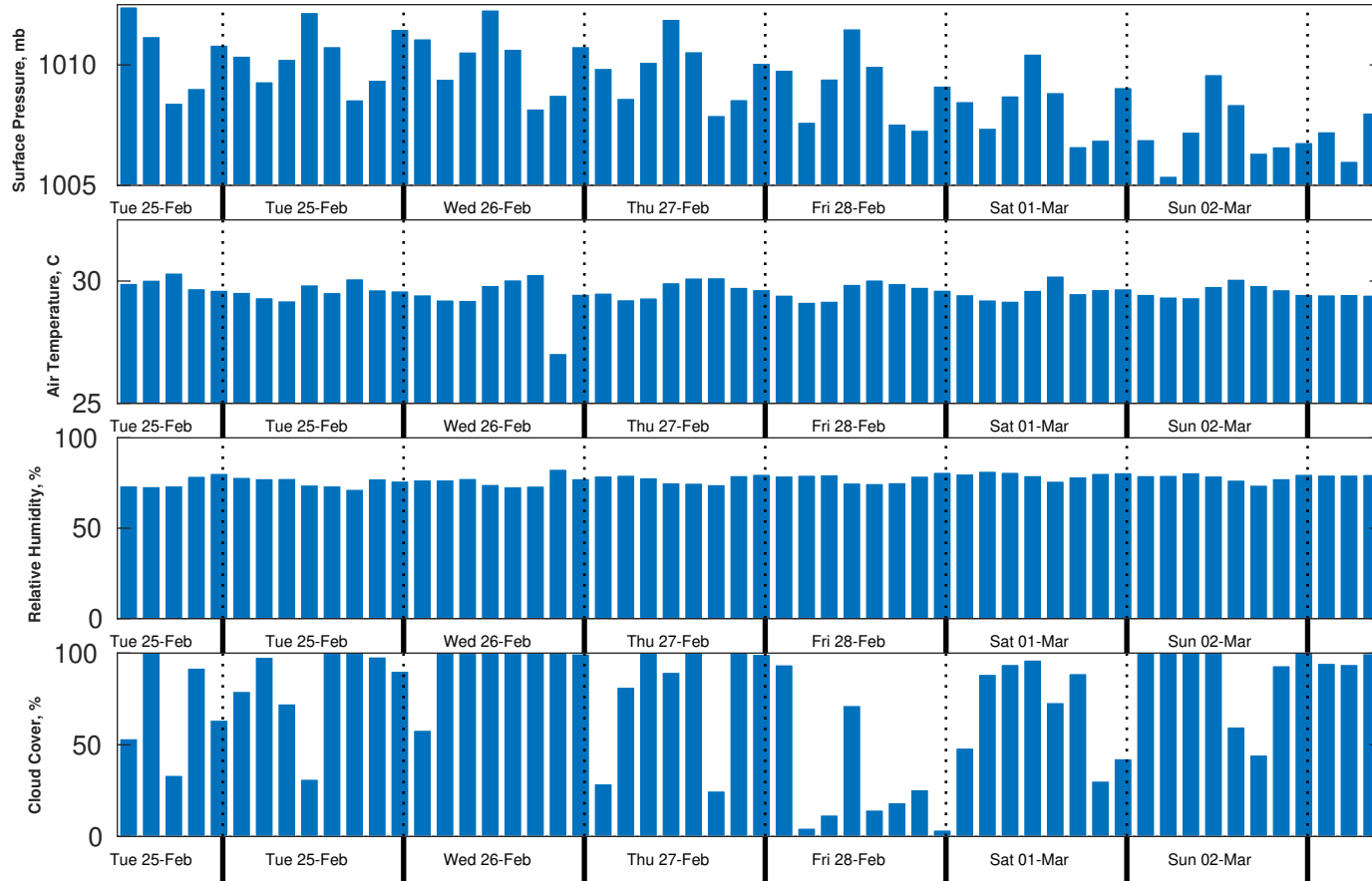
Waves: NW, 3-4 feet, 13-14 sec.

No currents available.

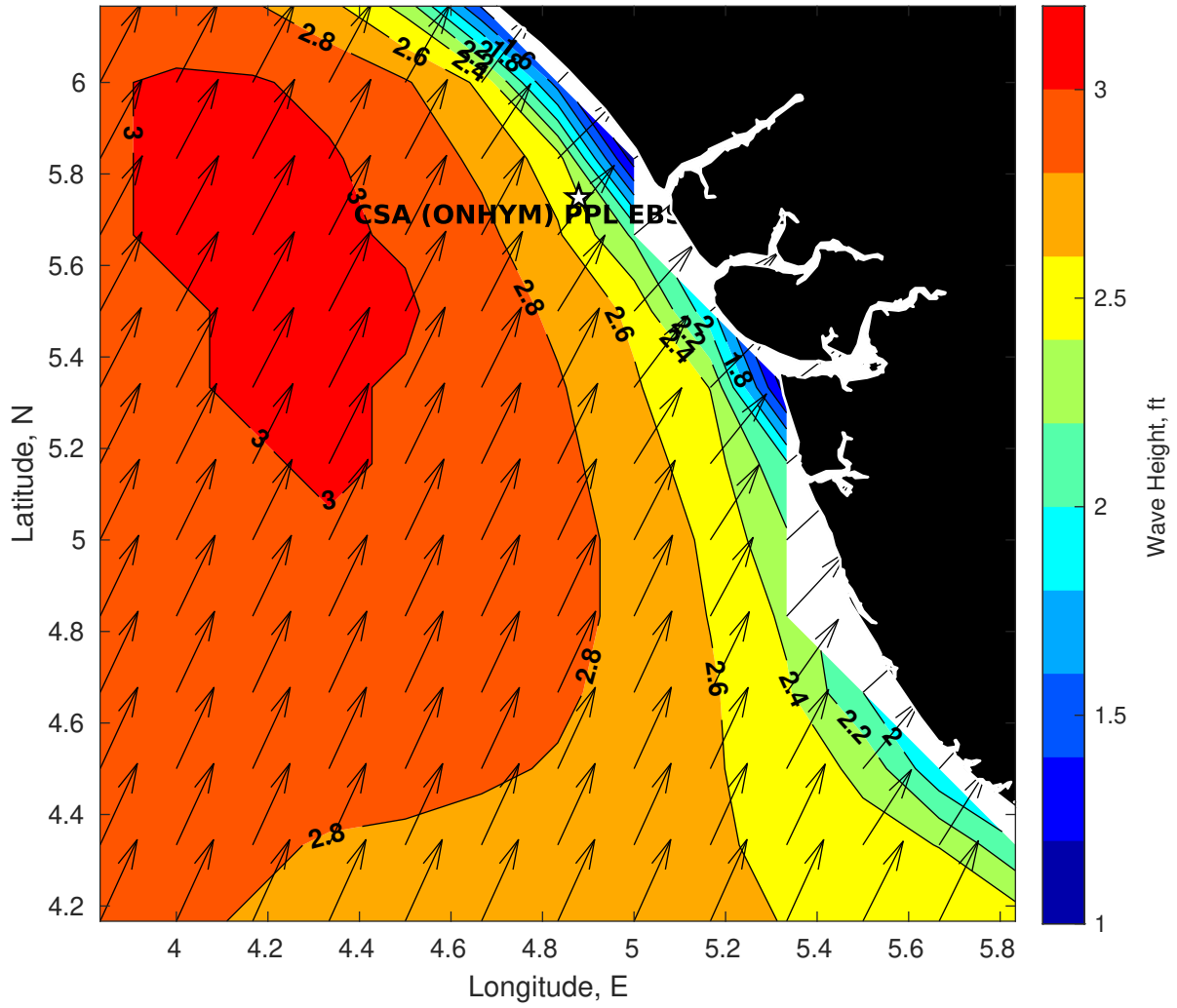
**Wind & Wave Forecast for CSA (ONHYM) PPL EBS - Nigeria from 25-Feb-2025 08:00:00 to 13-Mar-2025 08:00:00**



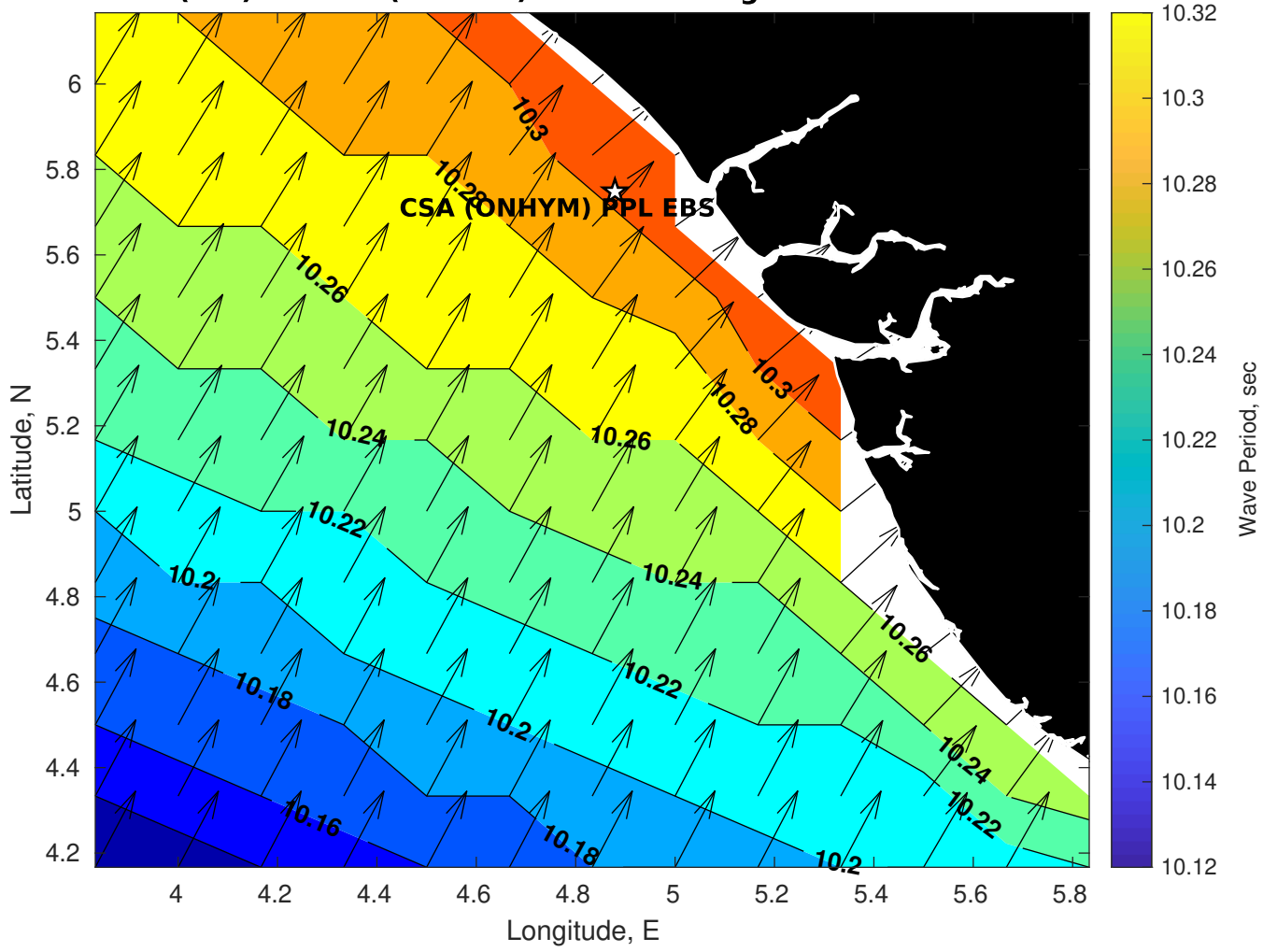
**Met Forecast for CSA (ONHYM) PPL EBS - Nigeria from 25-Feb-2025 06:00:00 to 04-Mar-2025 06:00:00**



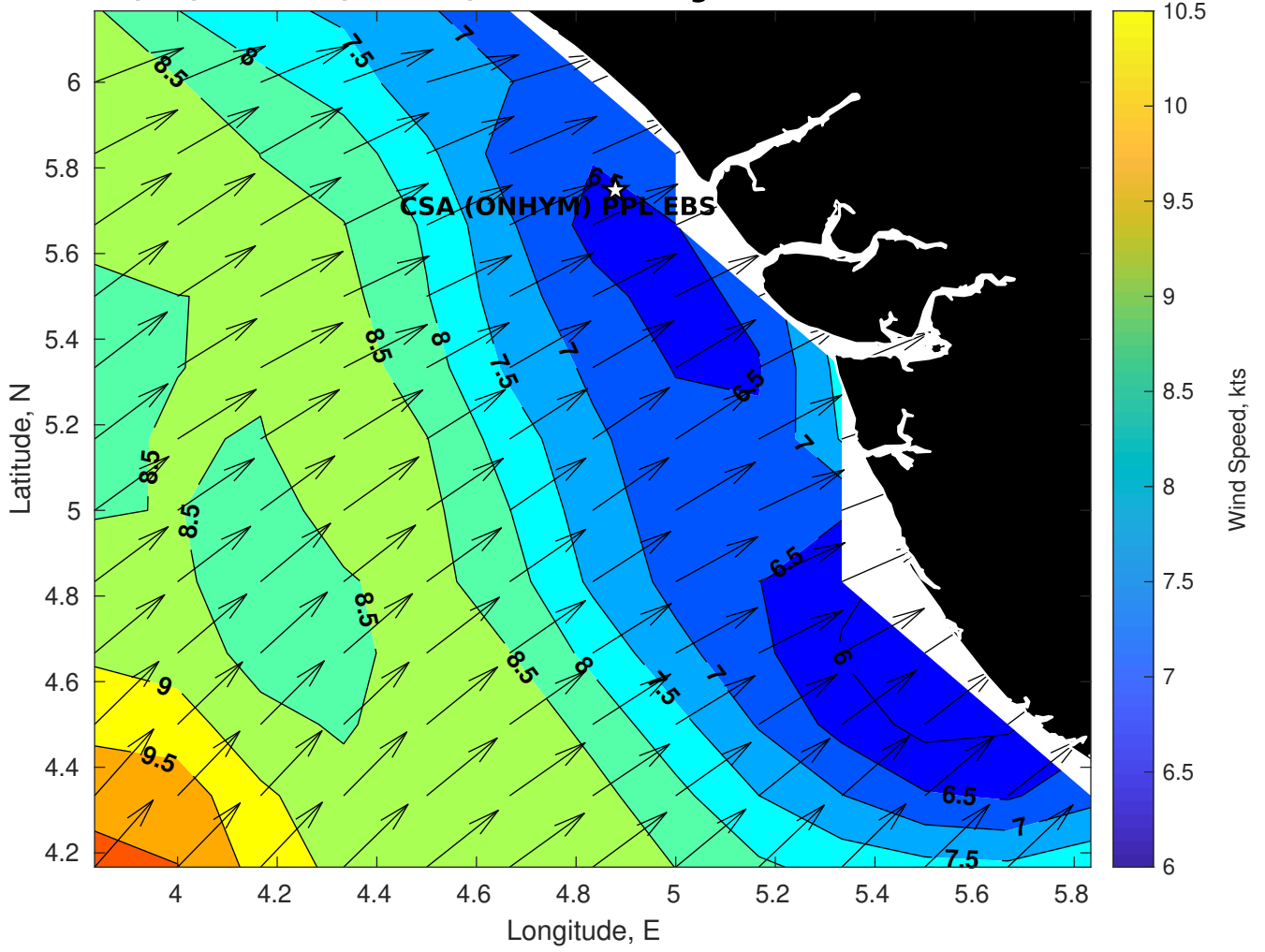
Wave Height (ft) for CSA (ONHYM) PPL EBS - Nigeria at 25-Feb-2025 09:00:00



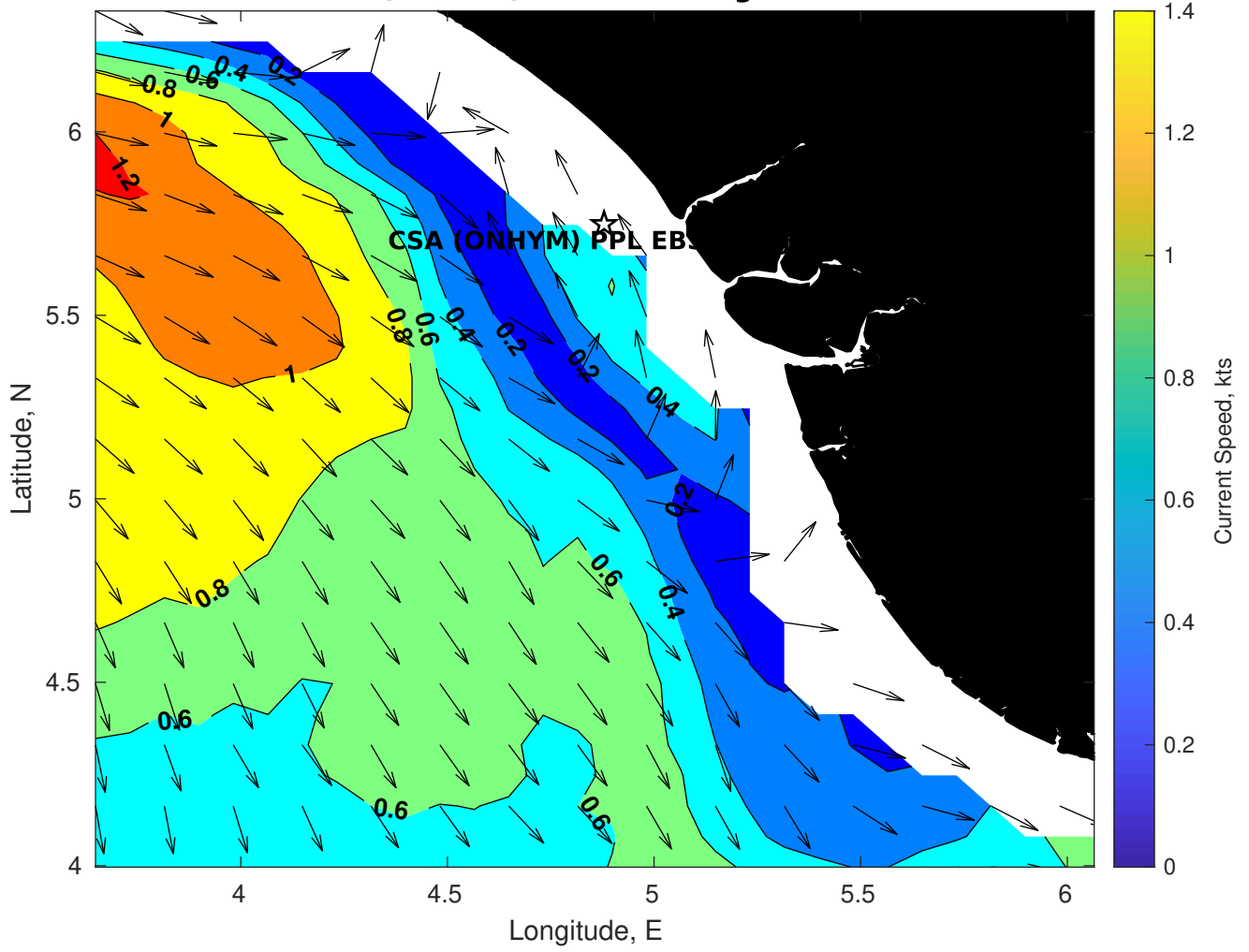
**Wave Period (sec) for CSA (ONHYM) PPL EBS - Nigeria at 25-Feb-2025 09:00:00**



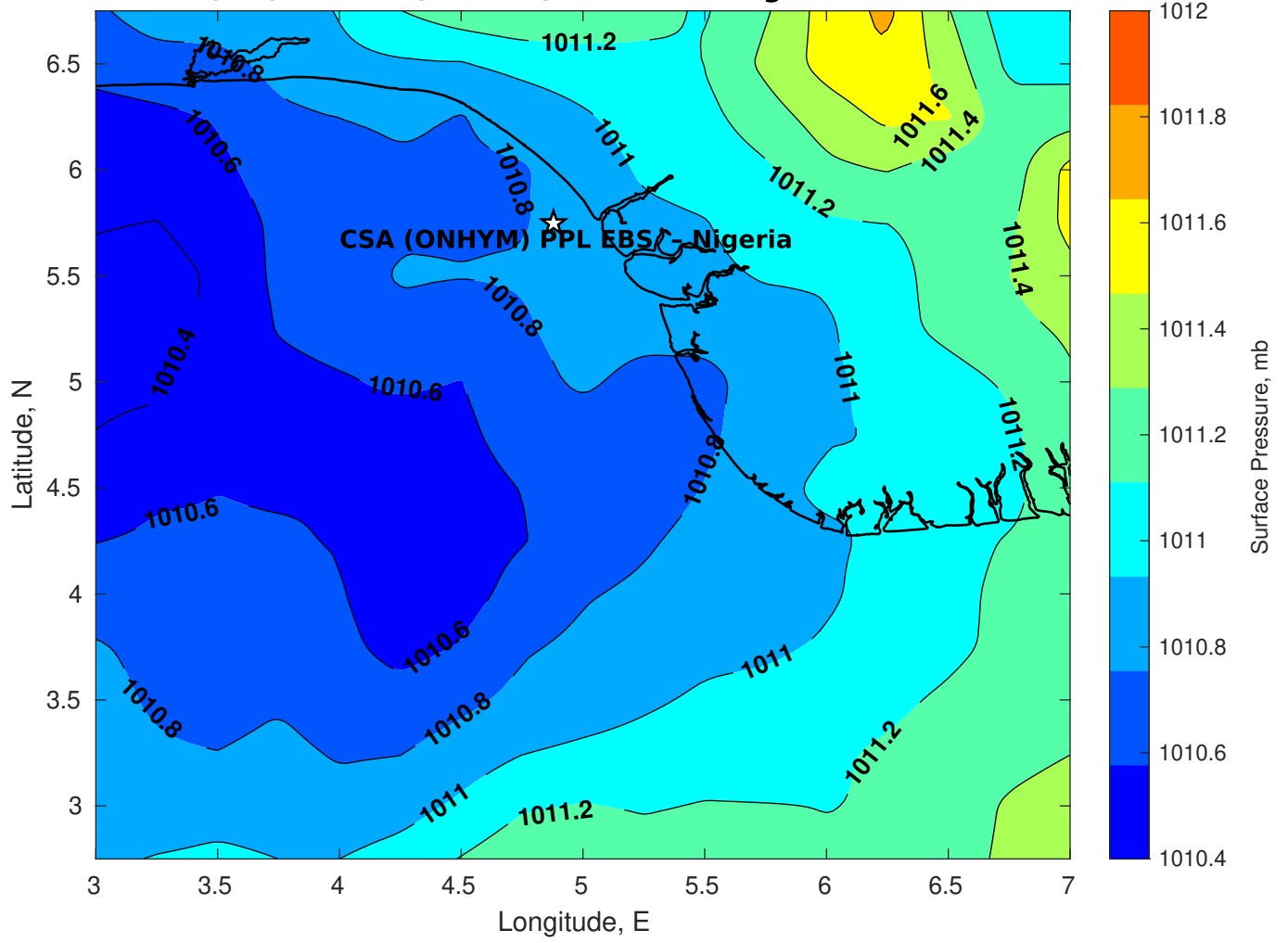
**Winds (kts) for CSA (ONHYM) PPL EBS - Nigeria at 25-Feb-2025 09:00:00**



### Surface Currents for CSA (ONHYM) PPL EBS - Nigeria at 24-Feb-2025 00:00:00

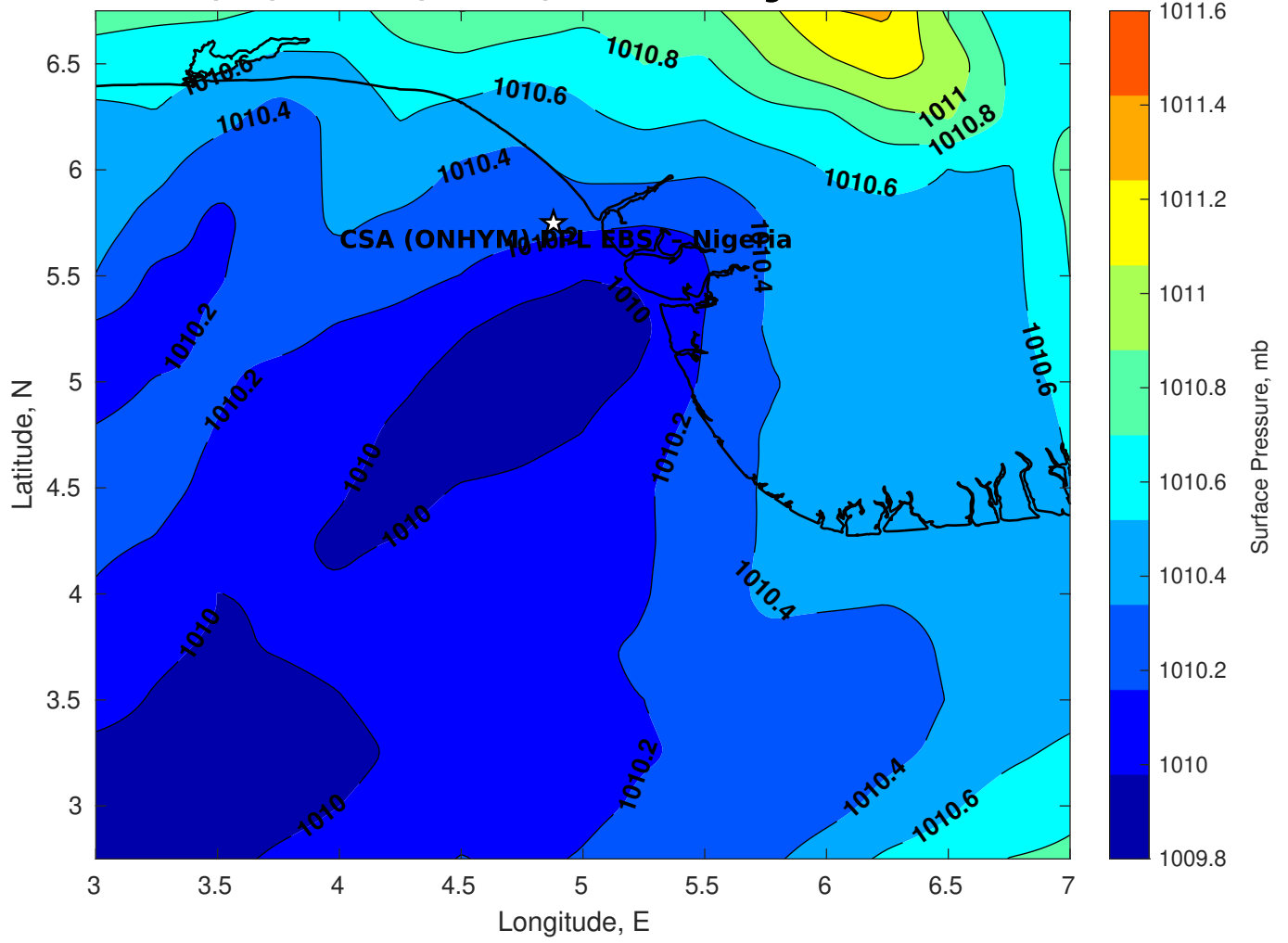


**Surface Pressure (mb) for CSA (ONHYM) PPL EBS - Nigeria at 25-Feb-2025 06:00:00**

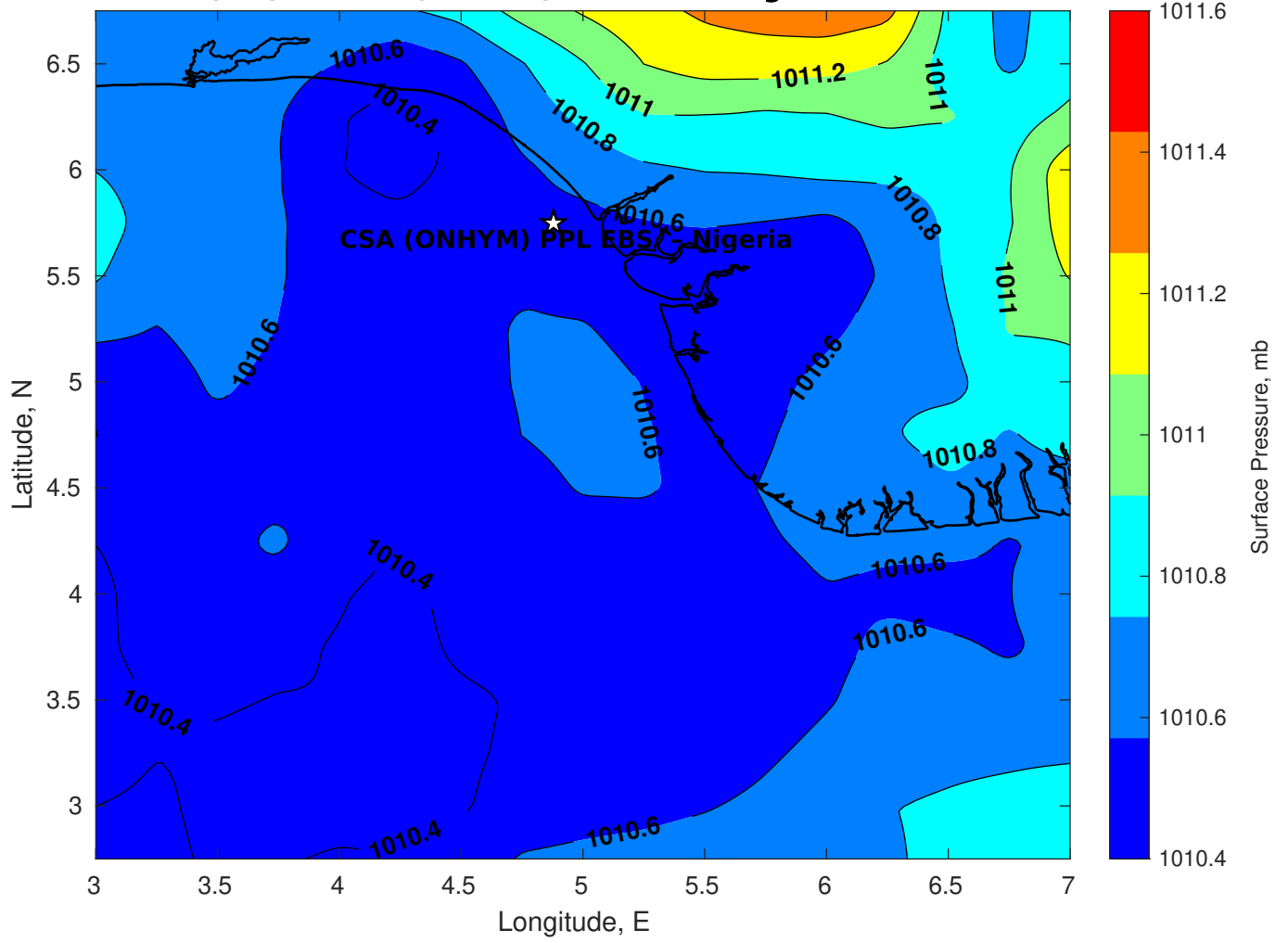




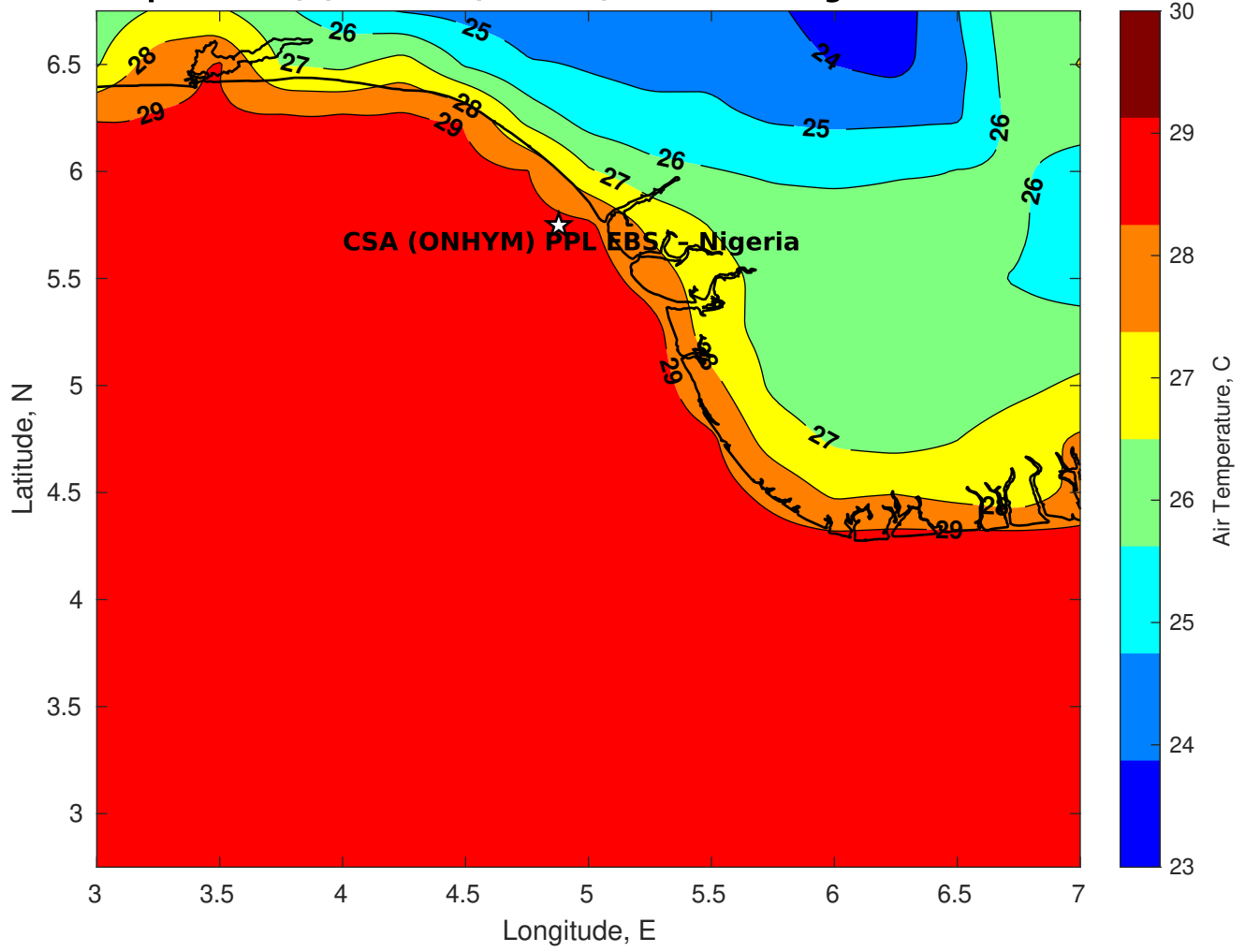
Surface Pressure (mb) for CSA (ONHYM) PPL EBS - Nigeria at 26-Feb-2025 06:00:00



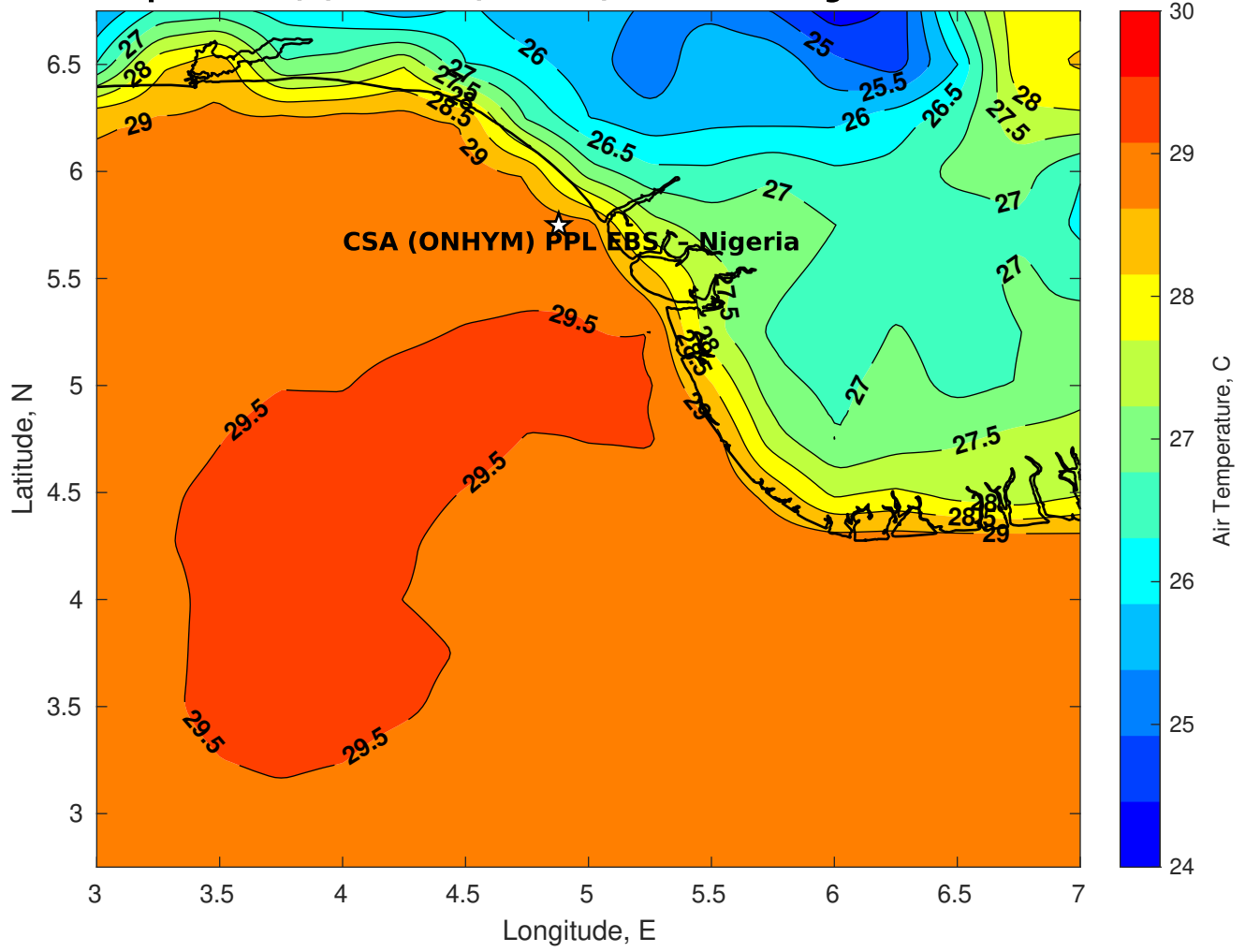
**Surface Pressure (mb) for CSA (ONHYM) PPL EBS - Nigeria at 27-Feb-2025 06:00:00**



**Air Temperature (C) for CSA (ONHYM) PPL EBS - Nigeria at 25-Feb-2025**



**Air Temperature (C) for CSA (ONHYM) PPL EBS - Nigeria at 25-Feb-2025**



**Air Temperature (C) for CSA (ONHYM) PPL EBS - Nigeria at 25-Feb-2025**

