

\*\*\*\*\*

Marine Weather Forecast for Tampnet P2378 South Texas Cable Route Geophysical  
Forecast valid as of 25-Feb-2025 0900 GMT

\*\*\*\*\*

All times are local.

Today

Winds: NE, 10-15 kts.  
Waves: E, 2-3 feet, 6-7 sec.  
No currents available.

Tonight

Winds: NE, 15-20 kts.  
Waves: NE, 3-4 feet, 4-5 sec.  
No currents available.

Wednesday

Winds: NE, 15-20 kts.  
Waves: NE, 4-5 feet, 5-6 sec.  
No currents available.

Wednesday Night

Winds: NE, 15-20 kts.  
Waves: NE, 4-5 feet, 5-6 sec.  
No currents available.

Thursday

Winds: E, 10-15 kts.  
Waves: NE, 3-4 feet, 6-7 sec.  
No currents available.

Thursday Night

Winds: NE, 10-15 kts.  
Waves: NE, 3-4 feet, 5-6 sec.  
No currents available.

Friday

Winds: NE, 10-15 kts.  
Waves: E, 3-4 feet, 5-6 sec.  
No currents available.

Friday Night

Winds: E, 5-10 kts.  
Waves: E, 2-3 feet, 5-6 sec.  
No currents available.

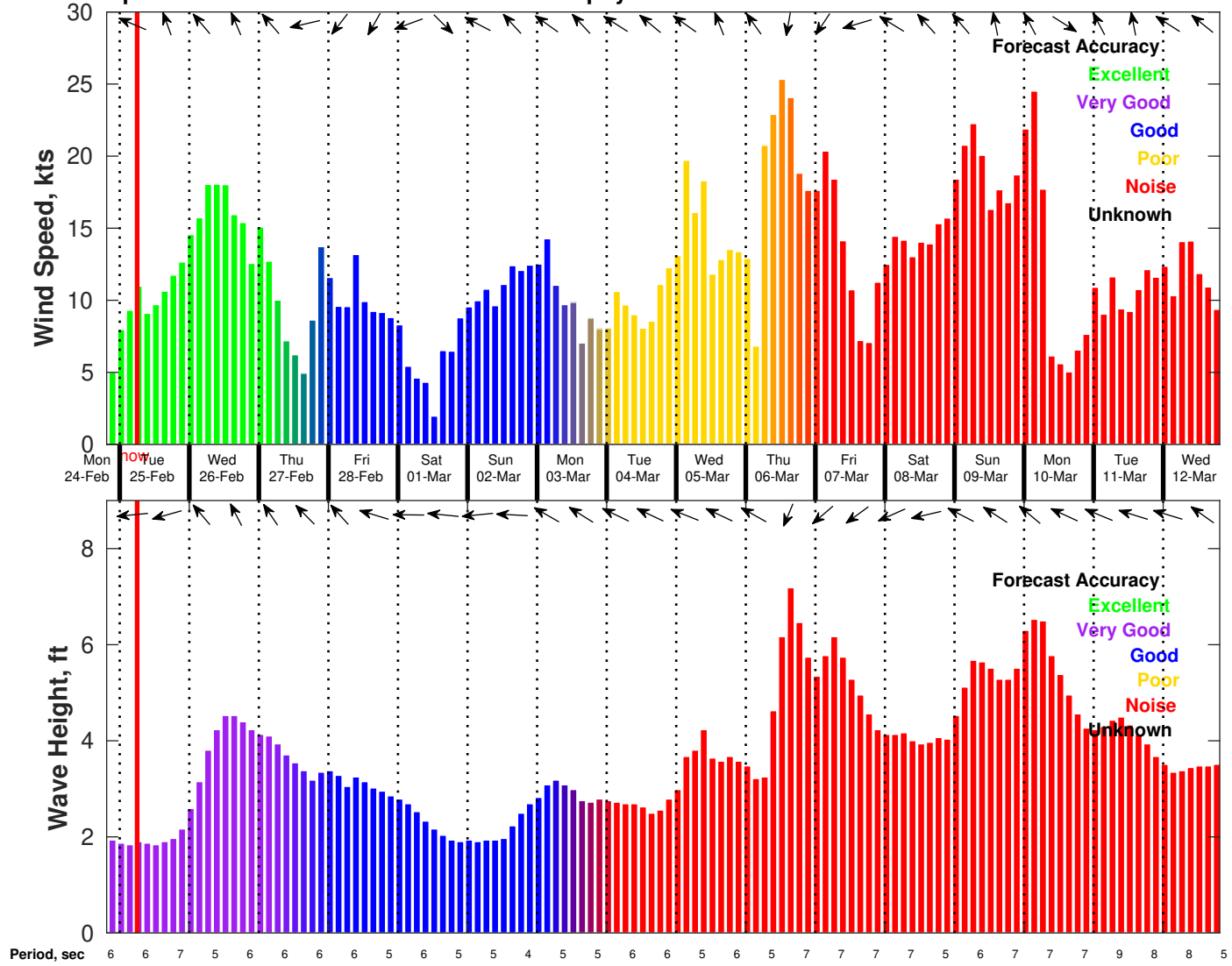
Saturday

Winds: E, 5-10 kts.  
Waves: E, 2-3 feet, 5-6 sec.  
No currents available.

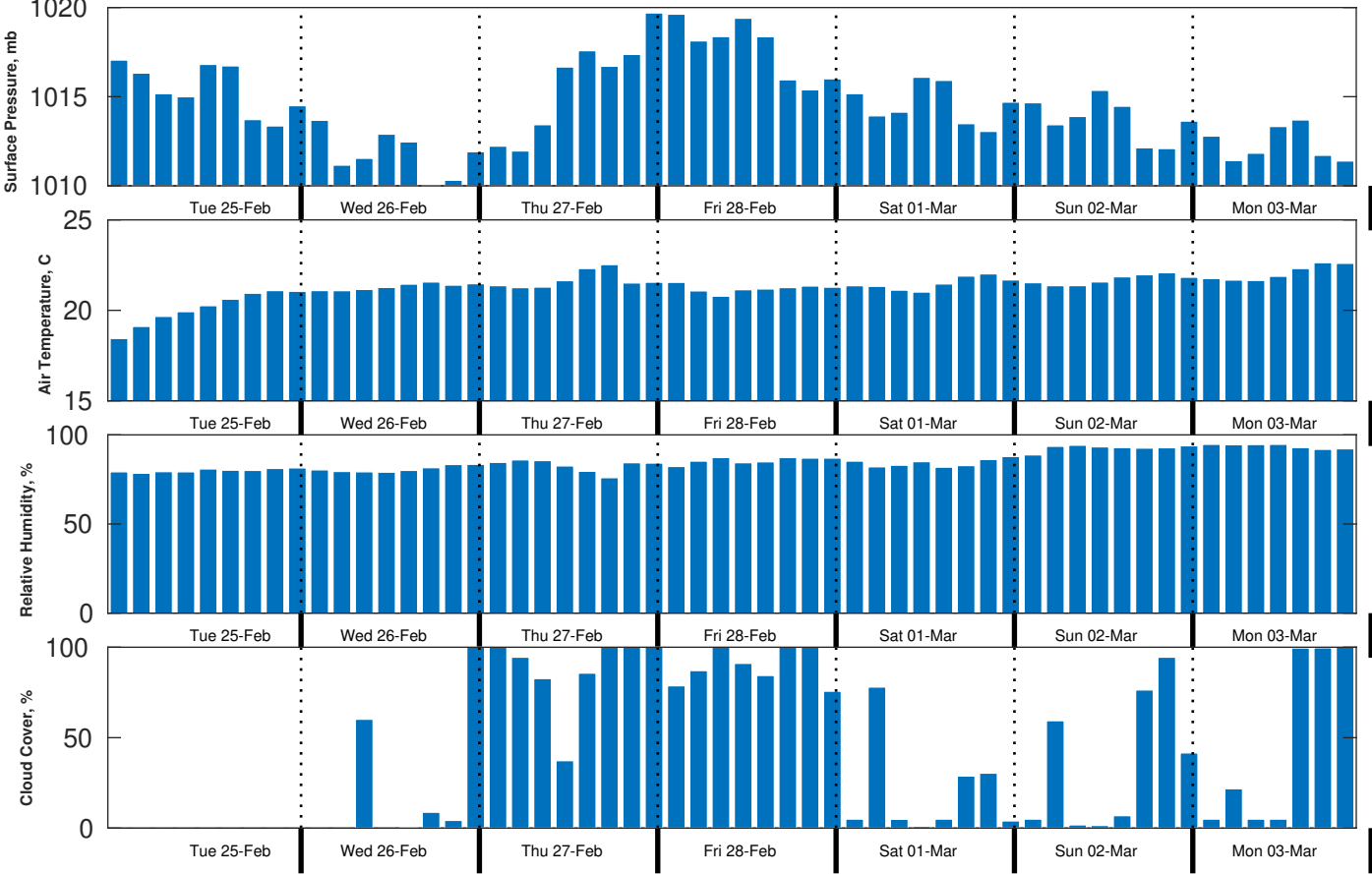
Saturday Night

Winds: NE, 10-15 kts.  
Waves: E, 1-2 feet, 5-6 sec.  
No currents available.

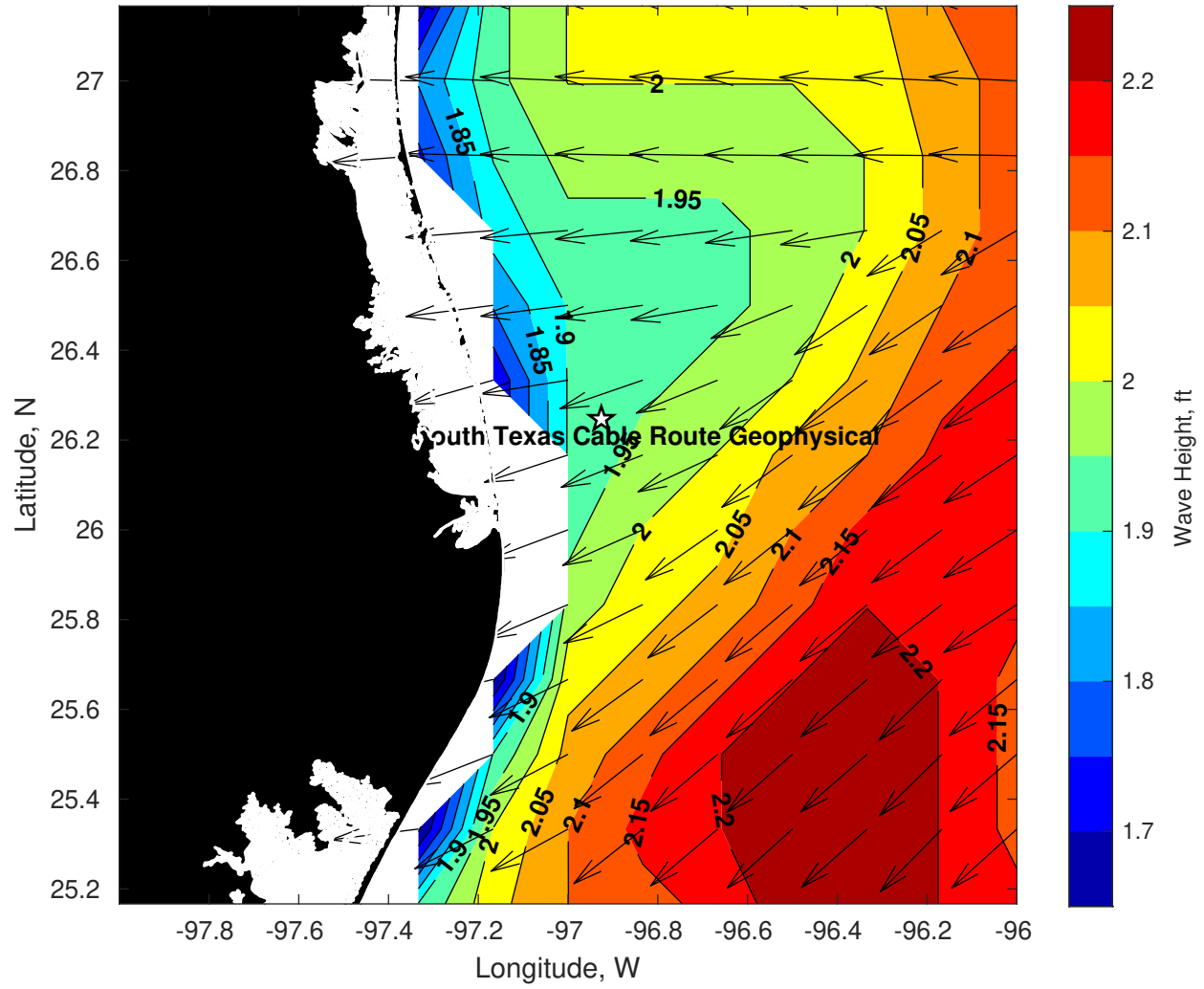
Wind & Wave Forecast for Tampnet P2378 South Texas Cable Route Geophysical from 24-Feb-2025 20:00:00 to 12-Mar-2025 20:00:00



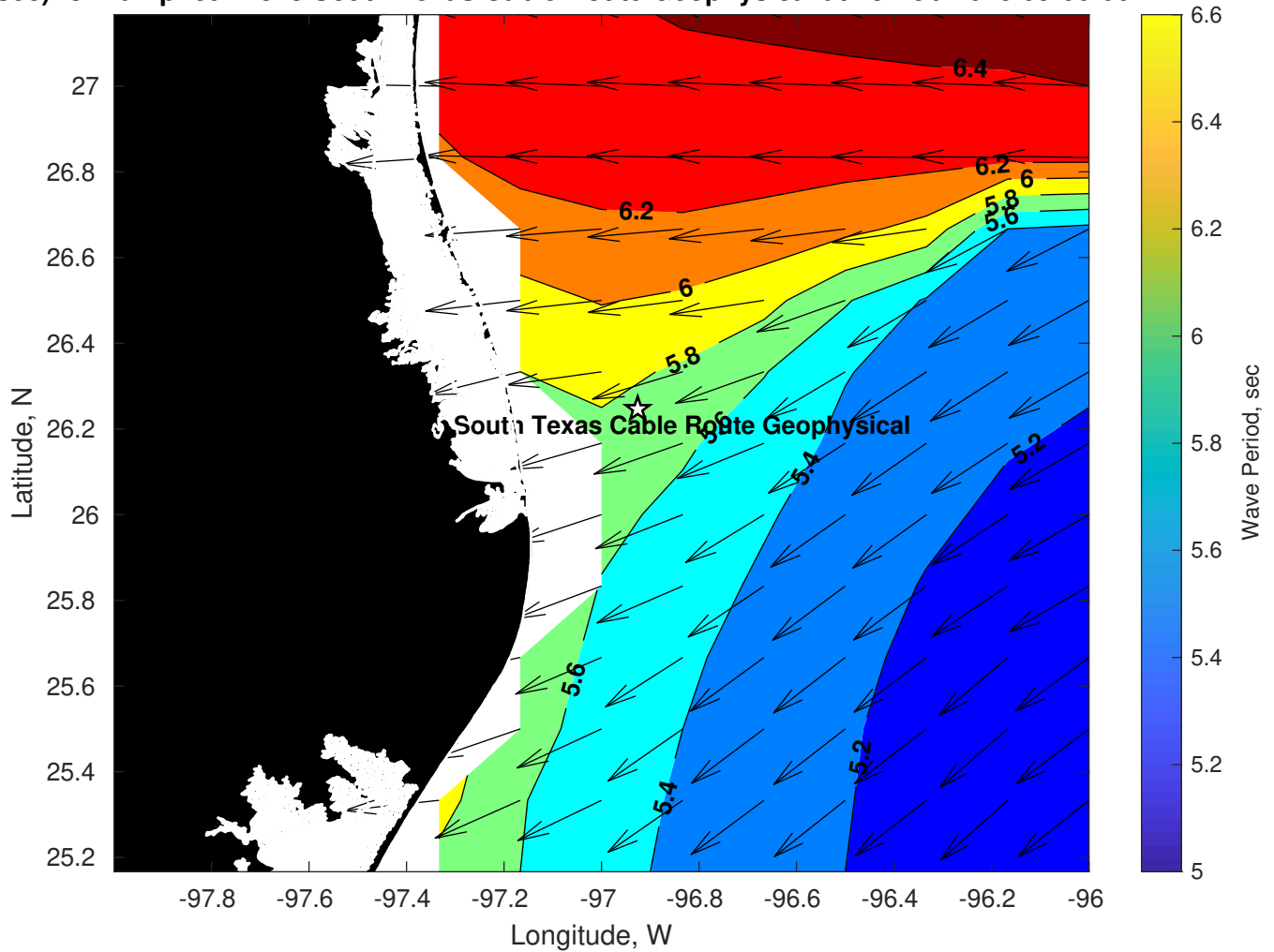
**Met Forecast for Tampnet P2378 South Texas Cable Route Geophysical from 25-Feb-2025 00:00:00 to 04-Mar-2025 00:00:00**



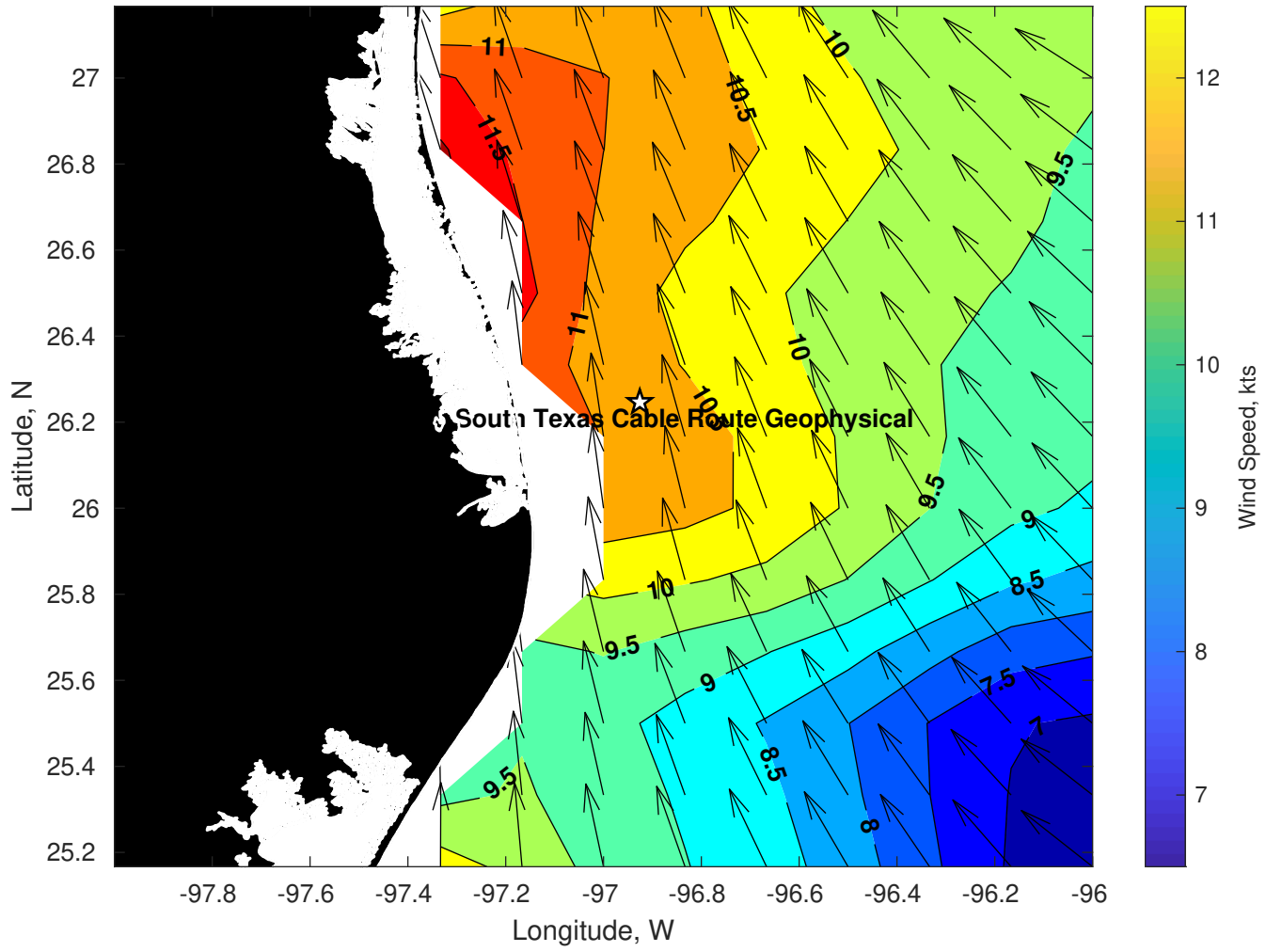
Wave Height (ft) for Tampnet P2378 South Texas Cable Route Geophysical at 25-Feb-2025 09:00:00



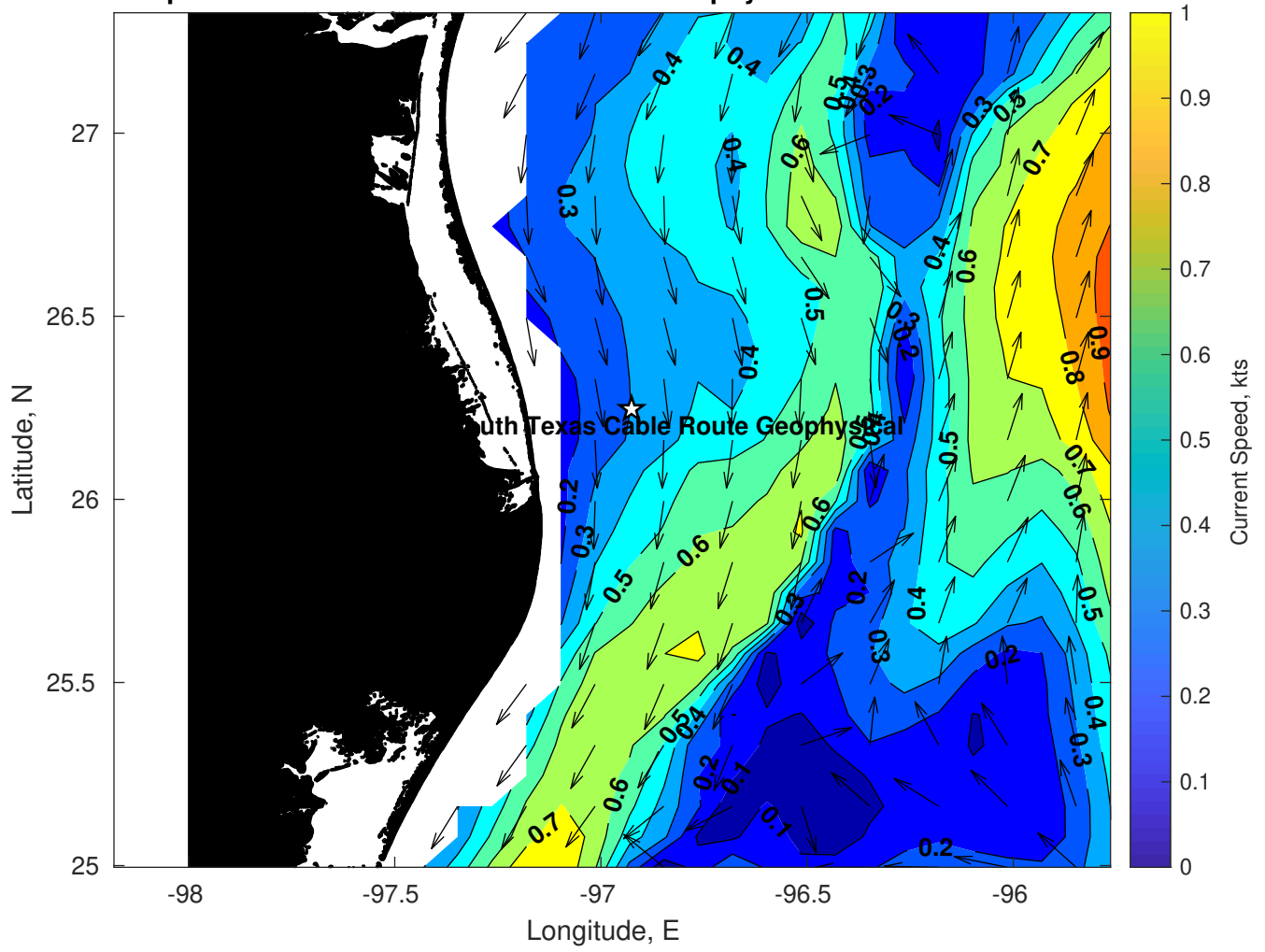
Period (sec) for Tampnet P2378 South Texas Cable Route Geophysical at 25-Feb-2025 09:00:00



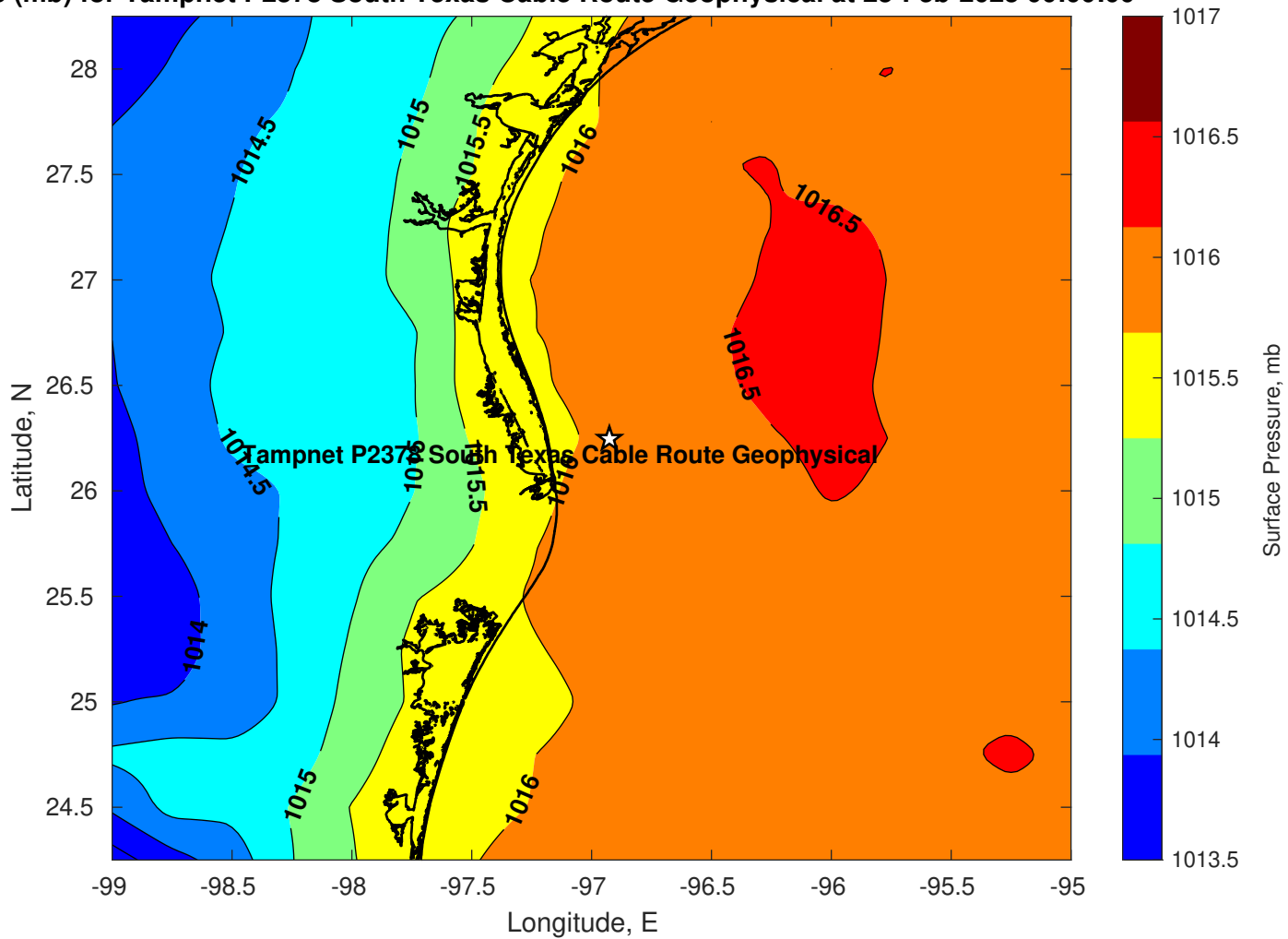
Winds (kts) for Tampnet P2378 South Texas Cable Route Geophysical at 25-Feb-2025 09:00:00



Surface Currents for Tampnet P2378 South Texas Cable Route Geophysical at 24-Feb-2025 00:00:00

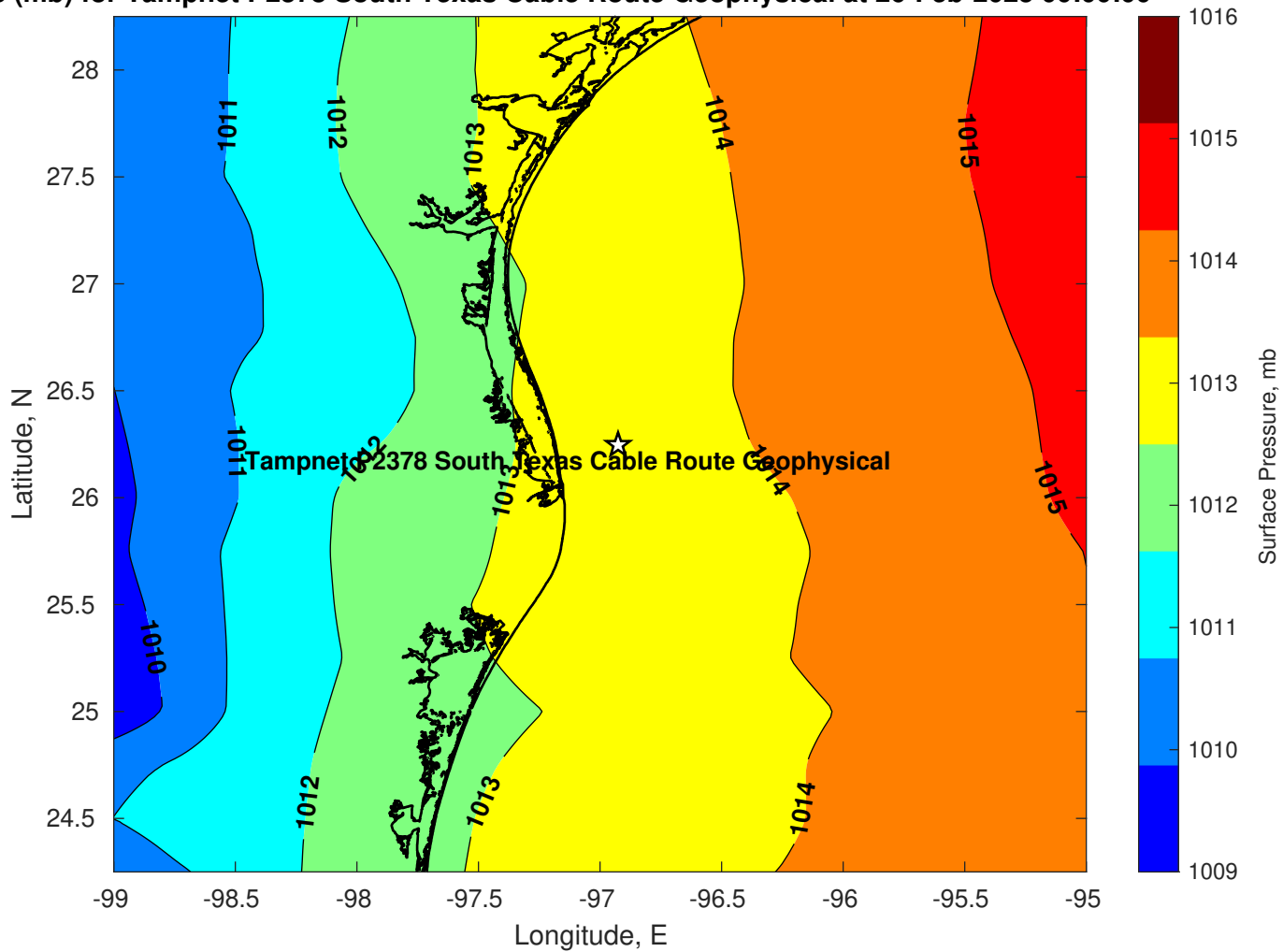


Pressure (mb) for Tampnet P2378 South Texas Cable Route Geophysical at 25-Feb-2025 00:00:00

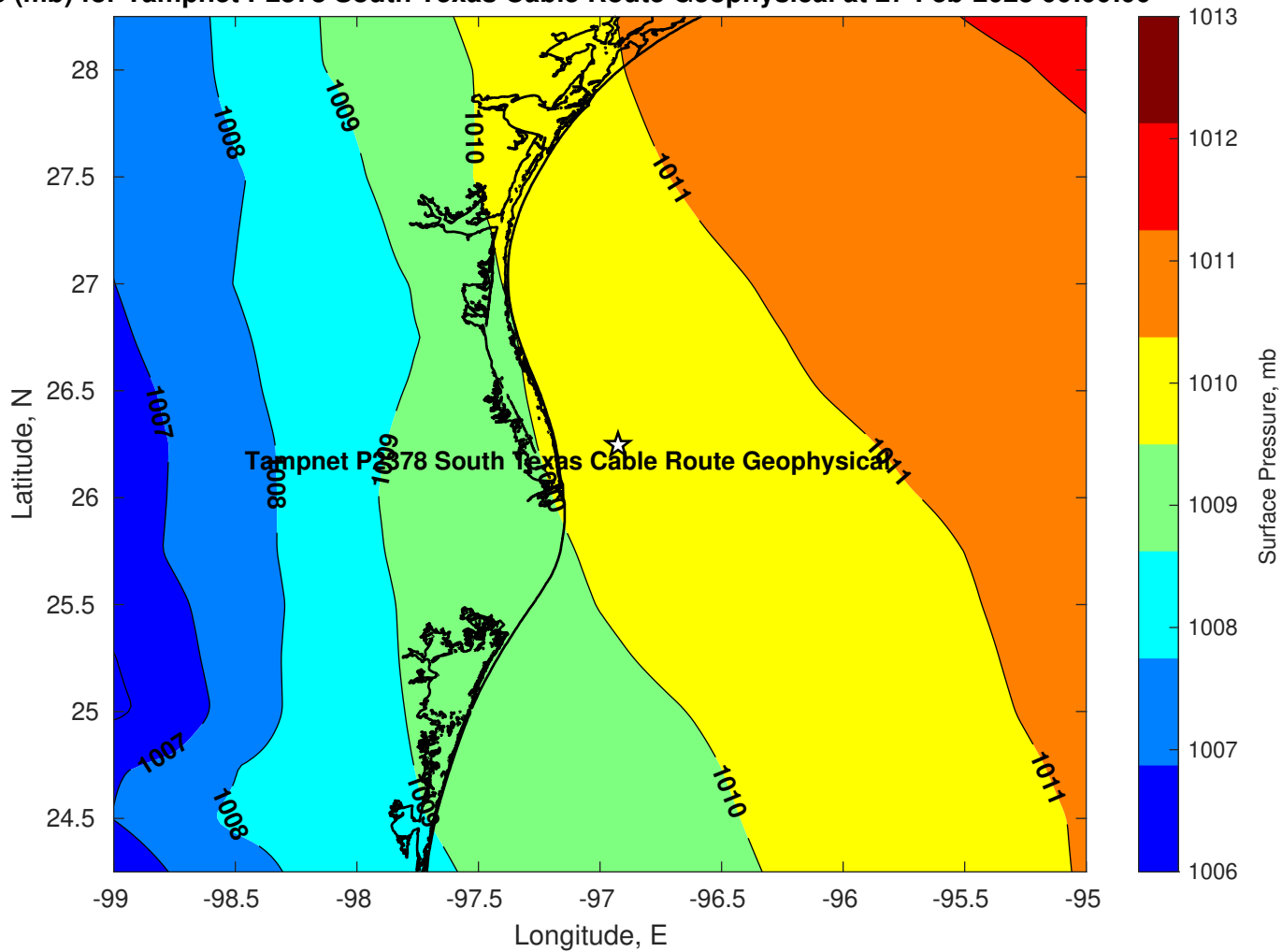




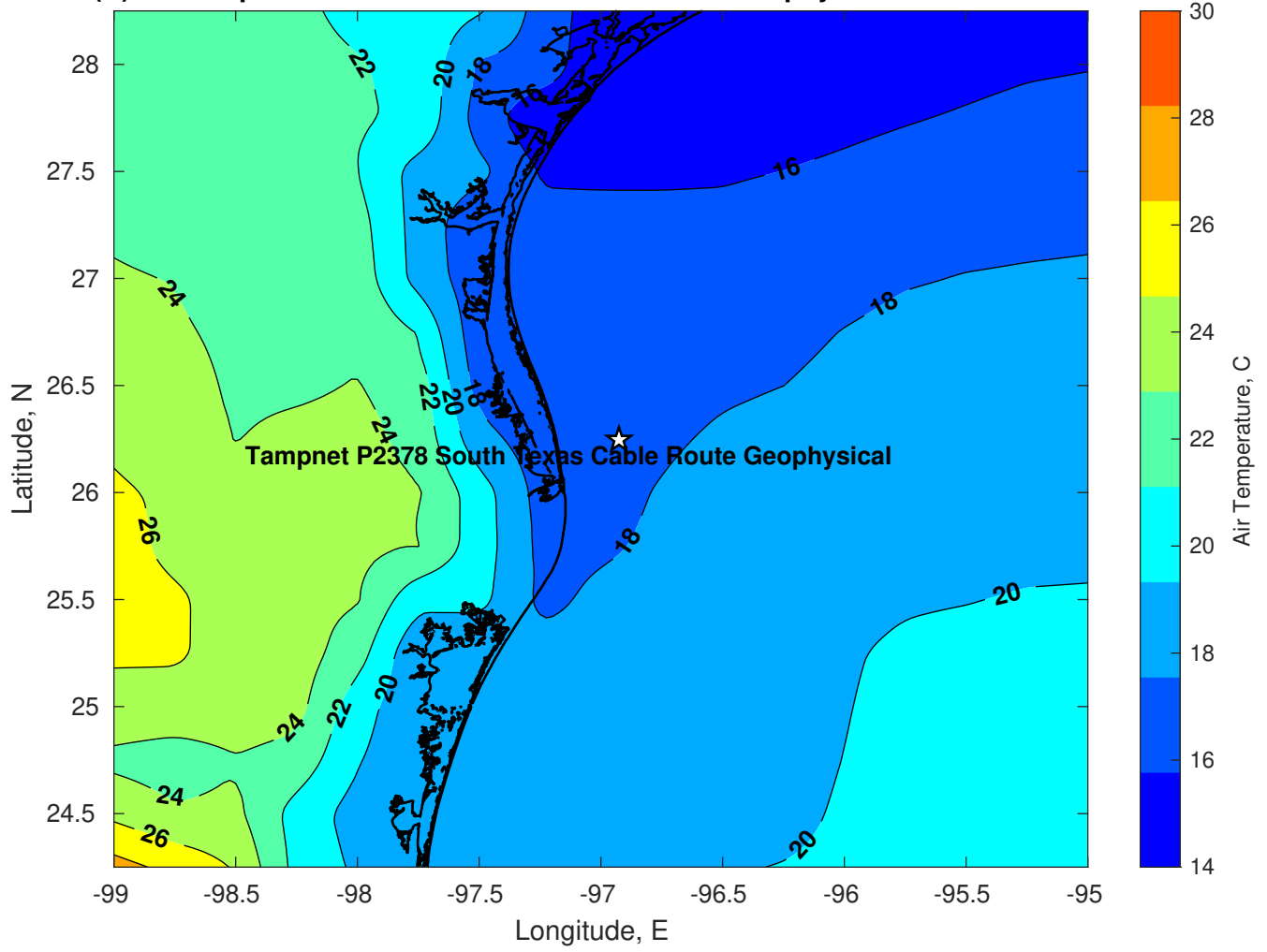
Pressure (mb) for Tampnet P2378 South Texas Cable Route Geophysical at 26-Feb-2025 00:00:00



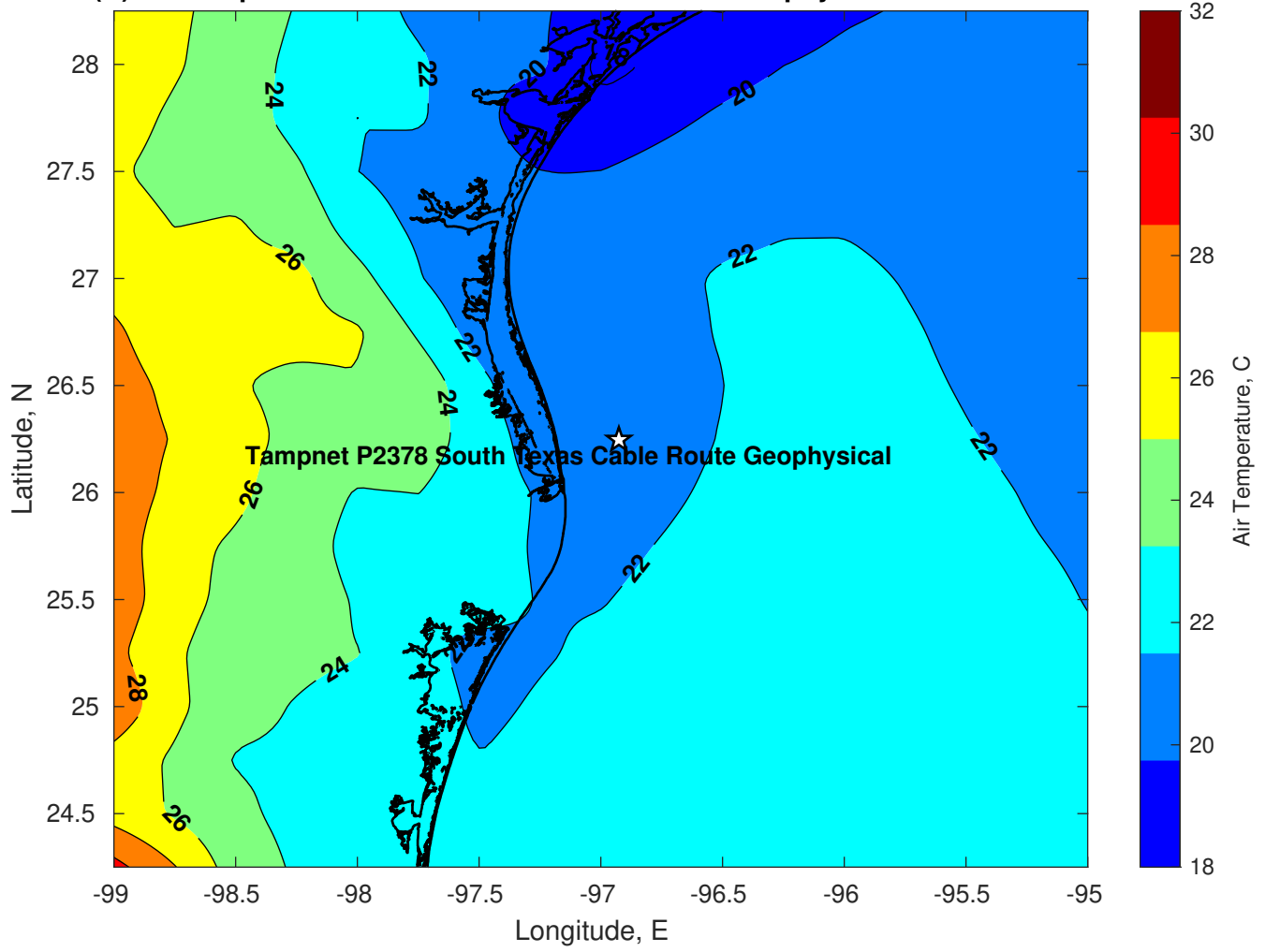
Pressure (mb) for Tampnet P2378 South Texas Cable Route Geophysical at 27-Feb-2025 00:00:00



Air Temperature (C) for Tampnet P2378 South Texas Cable Route Geophysical at 25-Feb-2025



Air Temperature (C) for Tampnet P2378 South Texas Cable Route Geophysical at 25-Feb-2025



Air Temperature (C) for Tampnet P2378 South Texas Cable Route Geophysical at 25-Feb-2025

