
Marine Weather Forecast for CSA (ONHYM) PPL EBS - Cote d'Ivoire
Forecast valid as of 26-Feb-2025 0900 GMT

All times are local.

Today

Winds: N, 10-15 kts.
Waves: N, 2-3 feet, 19-20 sec.
No currents available.

Tonight

Winds: N, 10-15 kts.
Waves: N, 3-4 feet, 18-19 sec.
No currents available.

Thursday

Winds: N, 10-15 kts.
Waves: N, 3-4 feet, 17-18 sec.
No currents available.

Thursday Night

Winds: N, 10-15 kts.
Waves: N, 3-4 feet, 15-16 sec.
No currents available.

Friday

Winds: N, 10-15 kts.
Waves: N, 3-4 feet, 15-16 sec.
No currents available.

Friday Night

Winds: NW, 10-15 kts.
Waves: N, 3-4 feet, 13-14 sec.
No currents available.

Saturday

Winds: NW, 10-15 kts.
Waves: N, 3-4 feet, 13-14 sec.
No currents available.

Saturday Night

Winds: NW, 10-15 kts.
Waves: N, 2-3 feet, 12-13 sec.
No currents available.

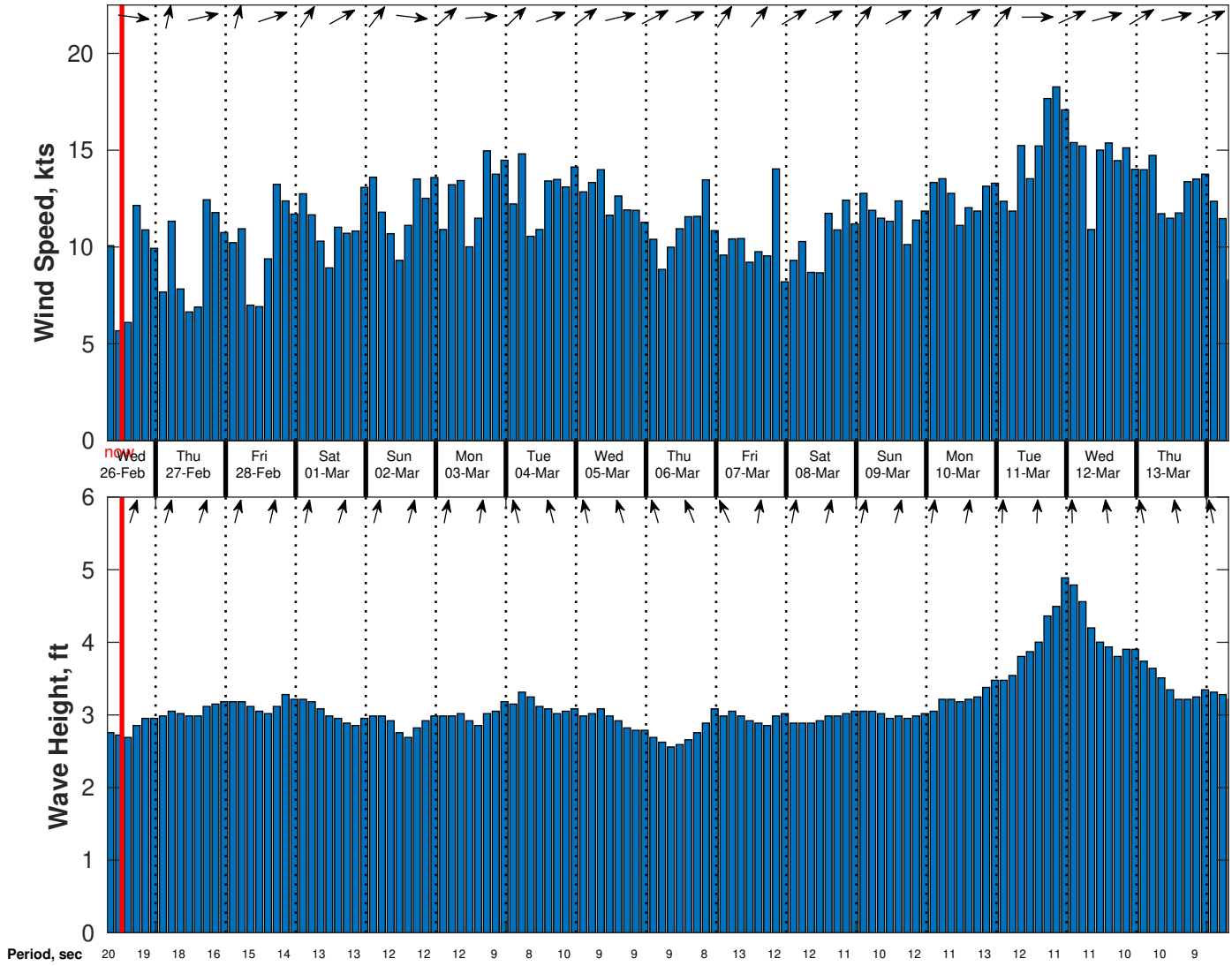
Sunday

Winds: NW, 10-15 kts.
Waves: N, 2-3 feet, 12-13 sec.
No currents available.

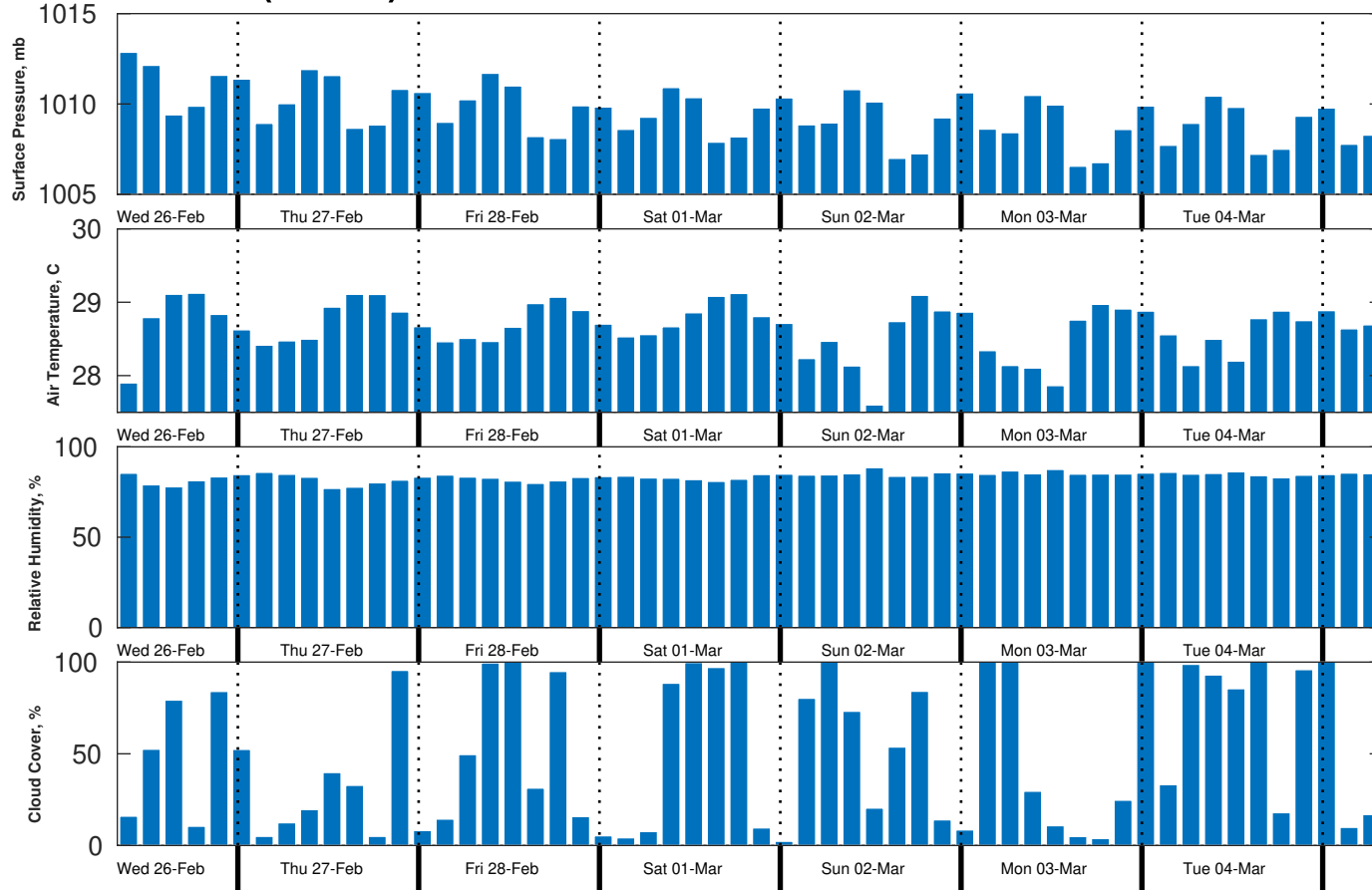
Sunday Night

Winds: NW, 10-15 kts.
Waves: N, 2-3 feet, 11-12 sec.
No currents available.

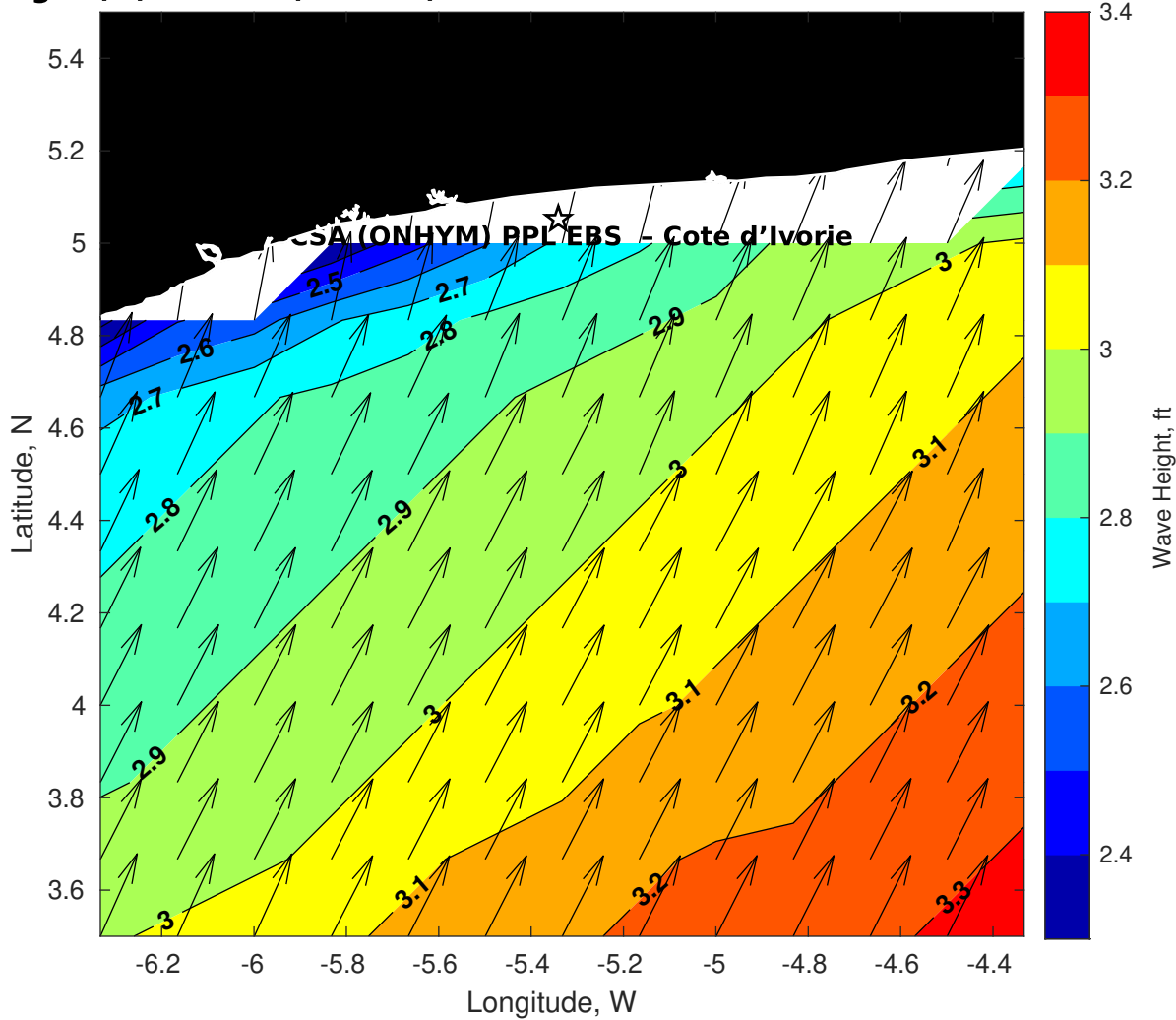
Wind & Wave Forecast for CSA (ONHYM) PPL EBS - Cote d'Ivoire from 26-Feb-2025 07:00:00 to 14-Mar-2025 07:00:00



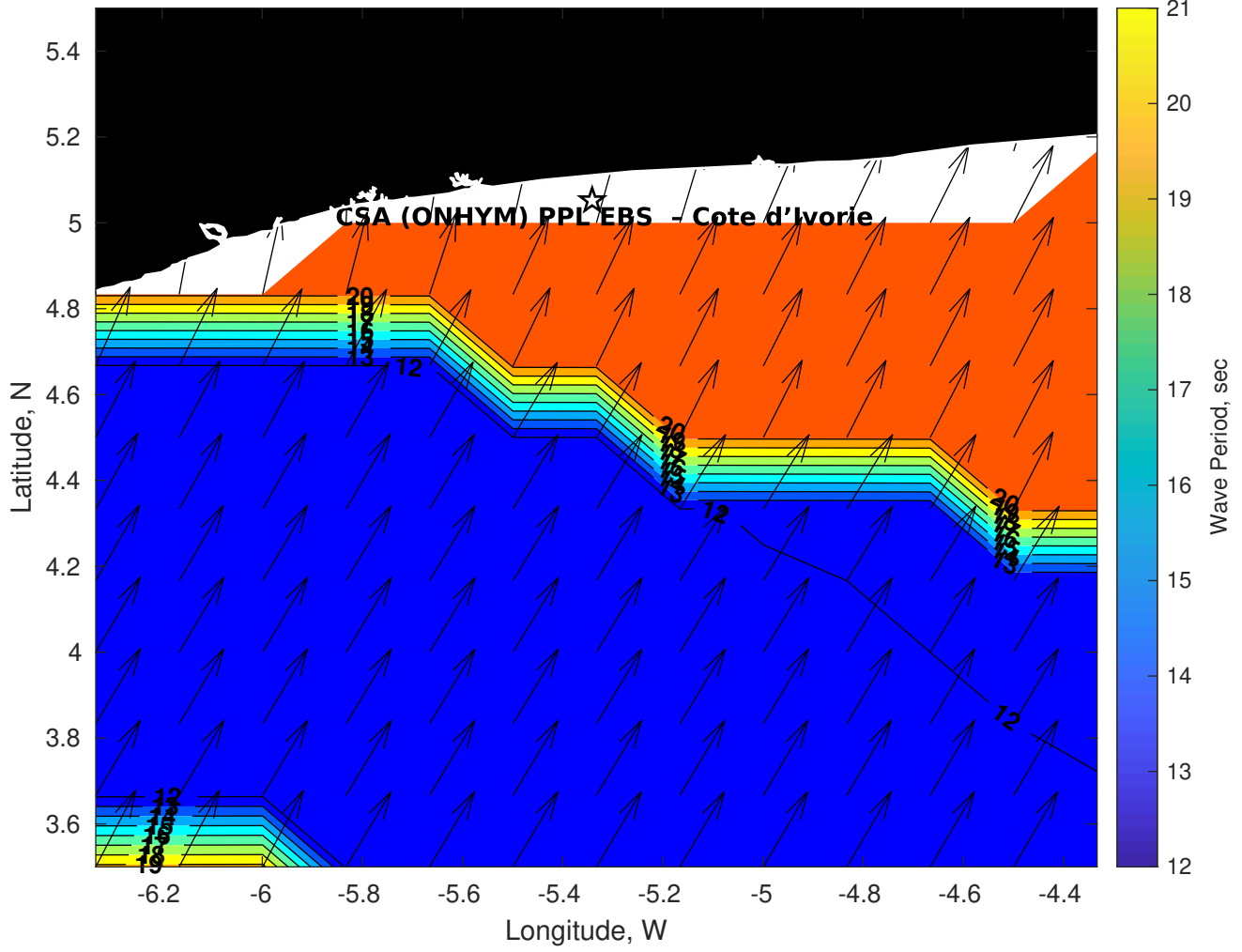
Met Forecast for CSA (ONHYM) PPL EBS - Cote d'Ivoire from 26-Feb-2025 06:00:00 to 05-Mar-2025 06:00:00



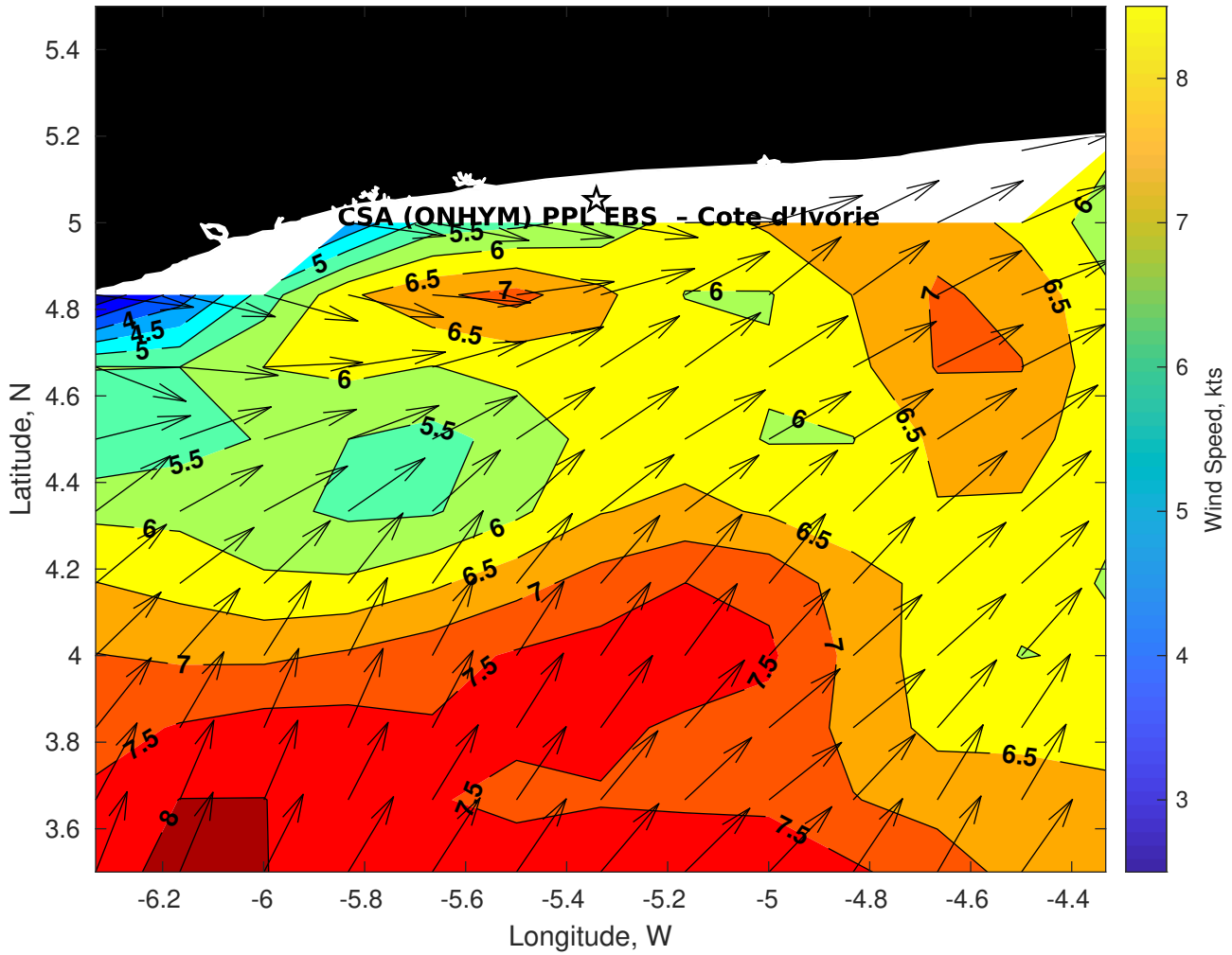
Wave Height (ft) for CSA (ONHYM) PPL EBS - Cote d'Ivoire at 26-Feb-2025 09:00:00



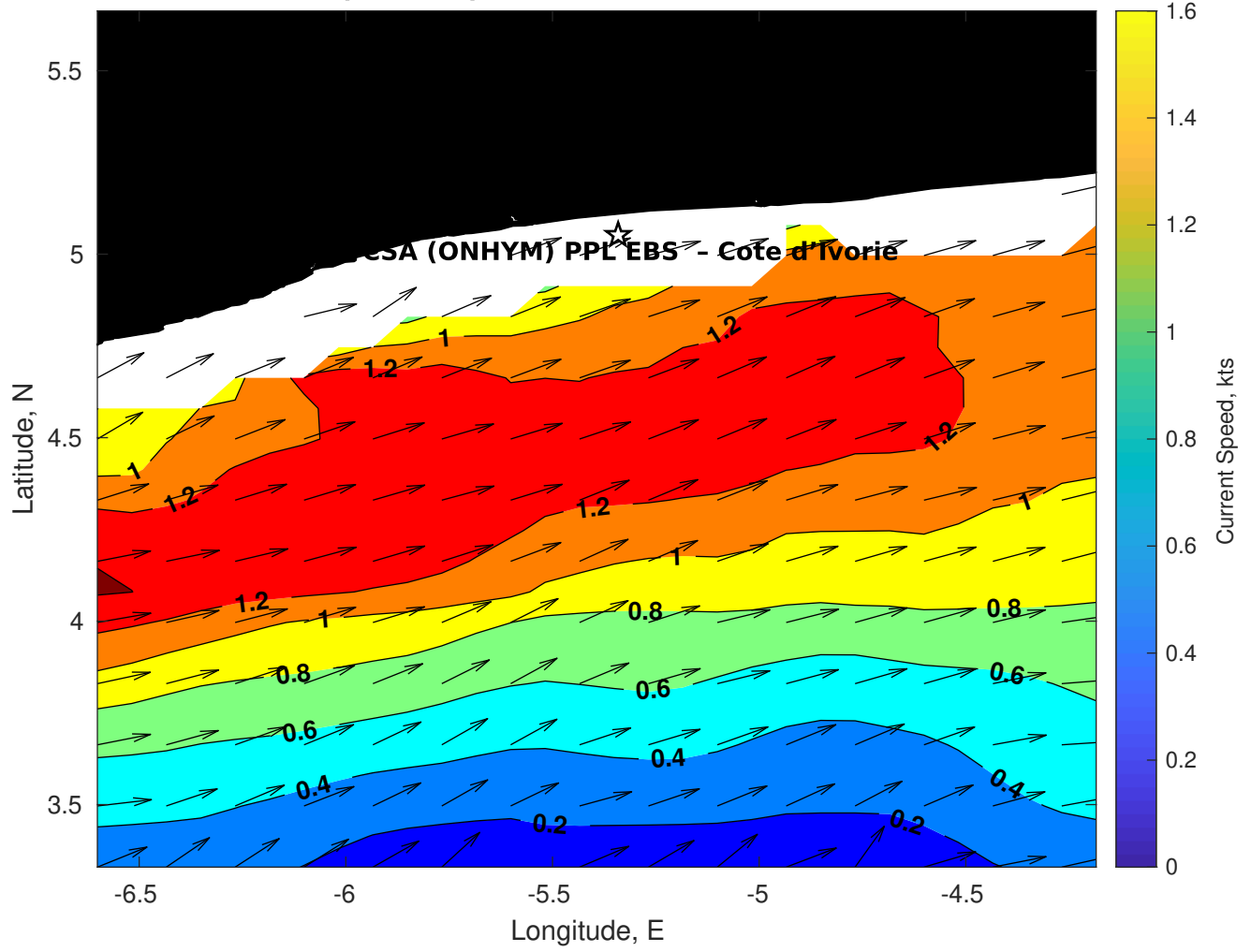
Wave Period (sec) for CSA (ONHYM) PPL EBS - Cote d'Ivoire at 26-Feb-2025 09:00:00



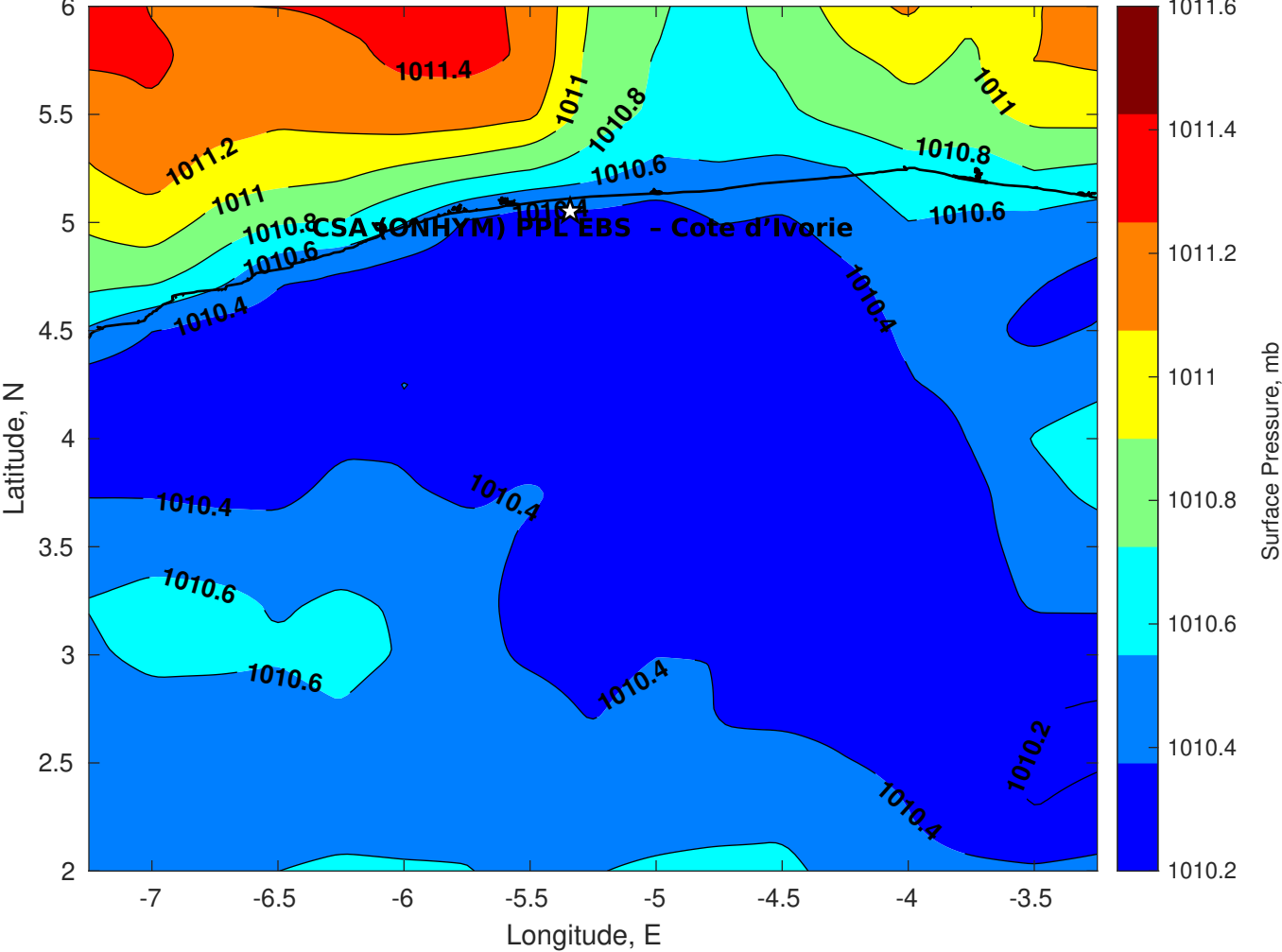
Winds (kts) for CSA (ONHYM) PPL EBS - Cote d'Ivoire at 26-Feb-2025 09:00:00



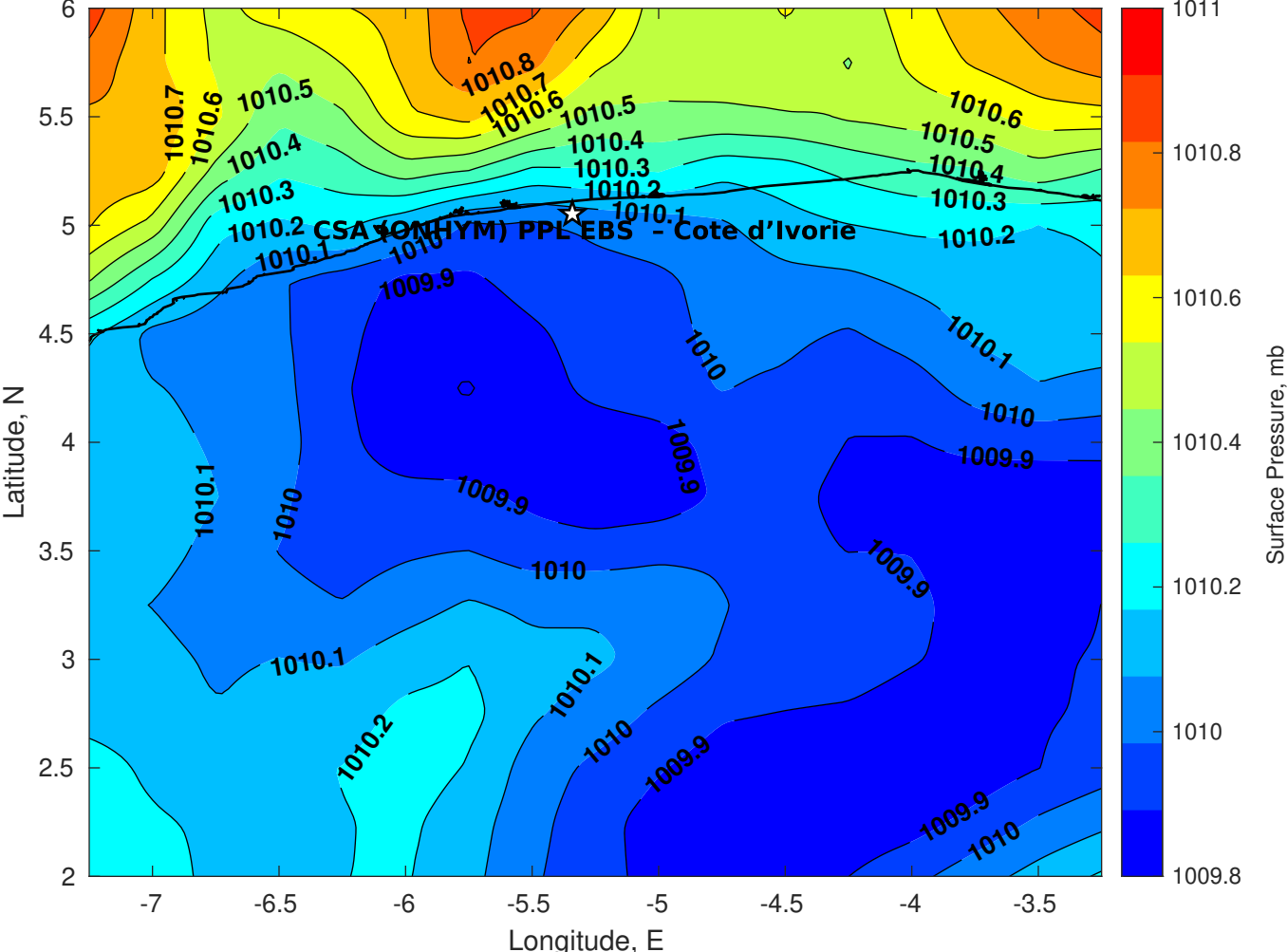
Surface Currents for CSA (ONHYM) PPL EBS - Cote d'Ivoire at 25-Feb-2025 00:00:00



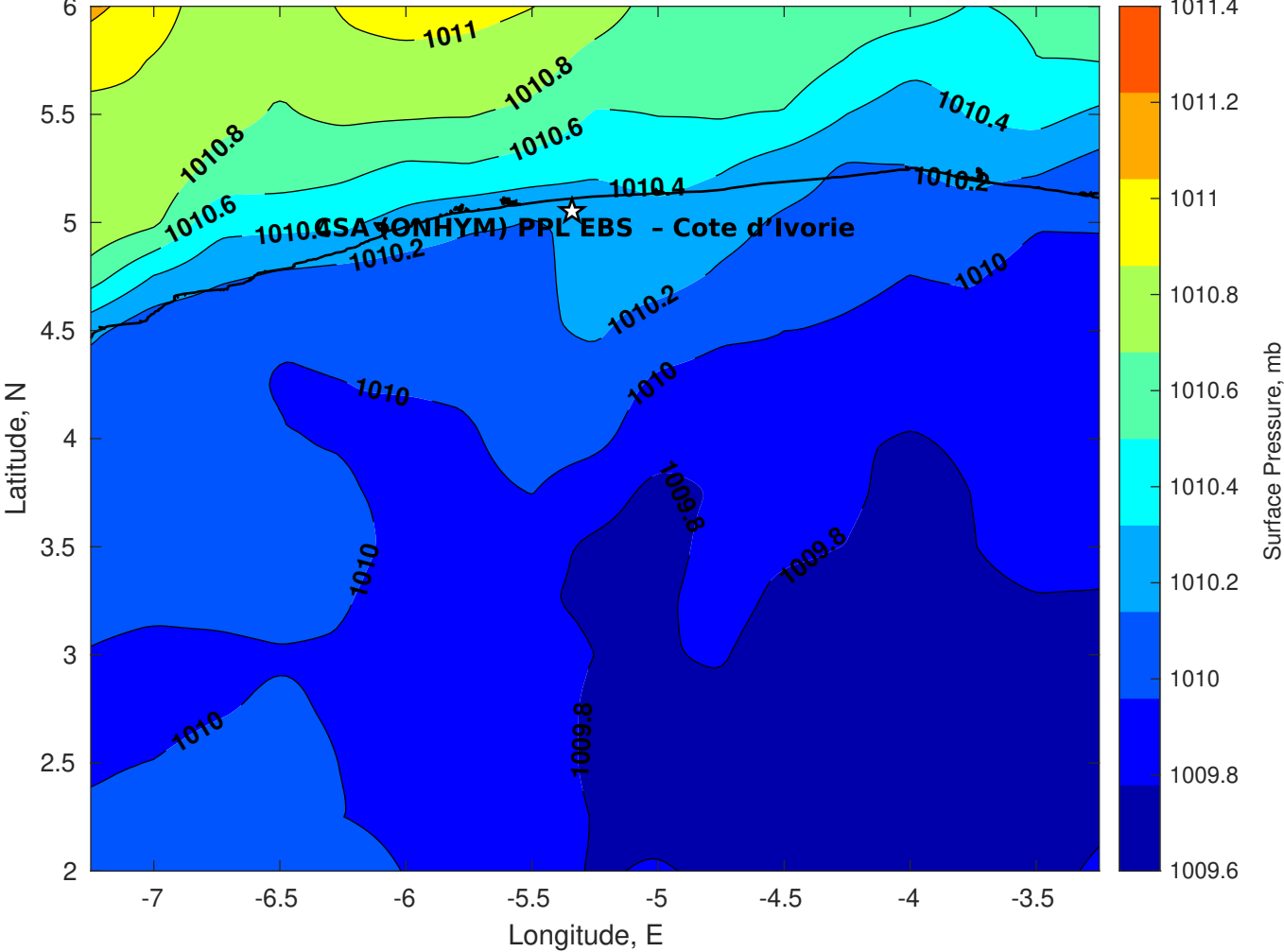
Surface Pressure (mb) for CSA (ONHYM) PPL EBS - Cote d'Ivoire at 26-Feb-2025 06:00:00



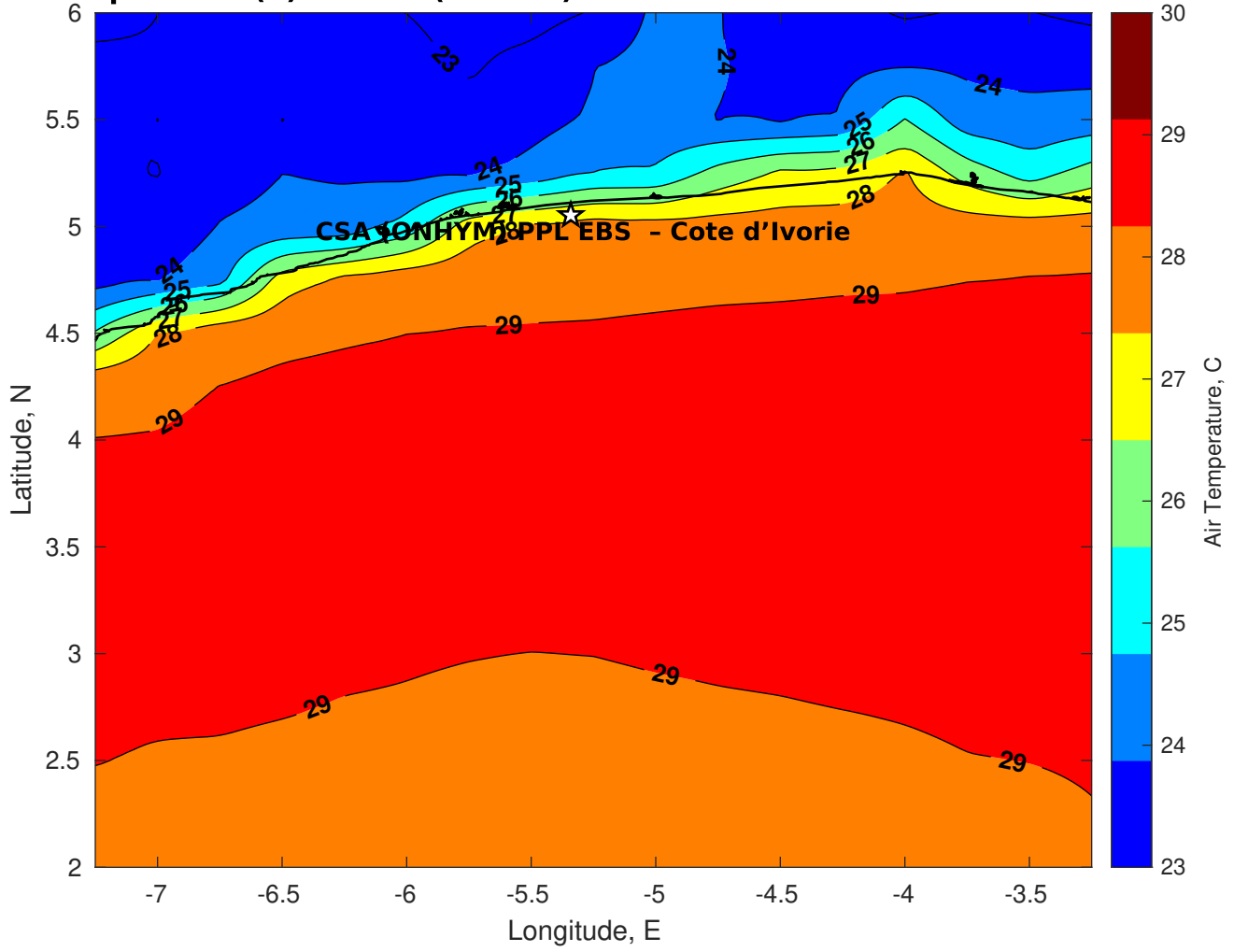
Surface Pressure (mb) for CSA (ONHYM) PPL EBS - Cote d'Ivoire at 27-Feb-2025 06:00:00



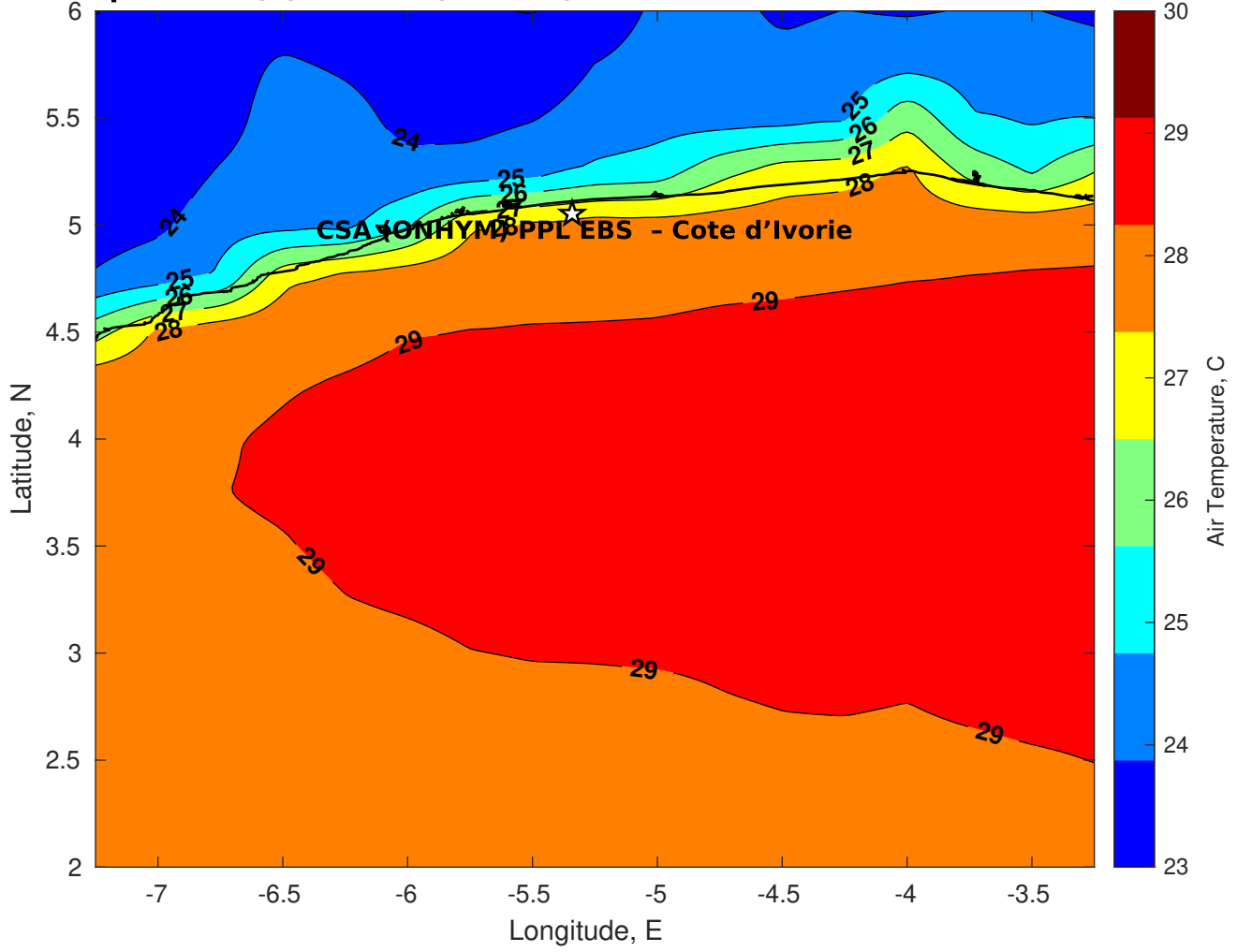
Surface Pressure (mb) for CSA (ONHYM) PPL EBS - Cote d'Ivoire at 28-Feb-2025 06:00:00



Air Temperature (C) for CSA (ONHYM) PPL EBS - Cote d'Ivoire at 26-Feb-2025



Air Temperature (C) for CSA (ONHYM) PPL EBS - Cote d'Ivoire at 26-Feb-2025



Air Temperature (C) for CSA (ONHYM) PPL EBS - Cote d'Ivoire at 26-Feb-2025

