
Marine Weather Forecast for CSA (ONHYM) PPL EBS - Western Sahara
Forecast valid as of 26-Feb-2025 0900 GMT

All times are local.

Today

Winds: NE, 15-20 kts.
Waves: NW, 5-6 feet, 12-13 sec.
No currents available.

Tonight

Winds: NE, 15-20 kts.
Waves: NW, 5-6 feet, 12-13 sec.
No currents available.

Thursday

Winds: NE, 15-20 kts.
Waves: NW, 5-6 feet, 11-12 sec.
No currents available.

Thursday Night

Winds: NE, 15-20 kts.
Waves: NW, 5-6 feet, 11-12 sec.
No currents available.

Friday

Winds: NE, 15-20 kts.
Waves: NW, 5-6 feet, 10-11 sec.
No currents available.

Friday Night

Winds: NE, 15-20 kts.
Waves: NW, 4-5 feet, 10-11 sec.
No currents available.

Saturday

Winds: NE, 15-20 kts.
Waves: NW, 4-5 feet, 11-12 sec.
No currents available.

Saturday Night

Winds: N, 10-15 kts.
Waves: NW, 4-5 feet, 10-11 sec.
No currents available.

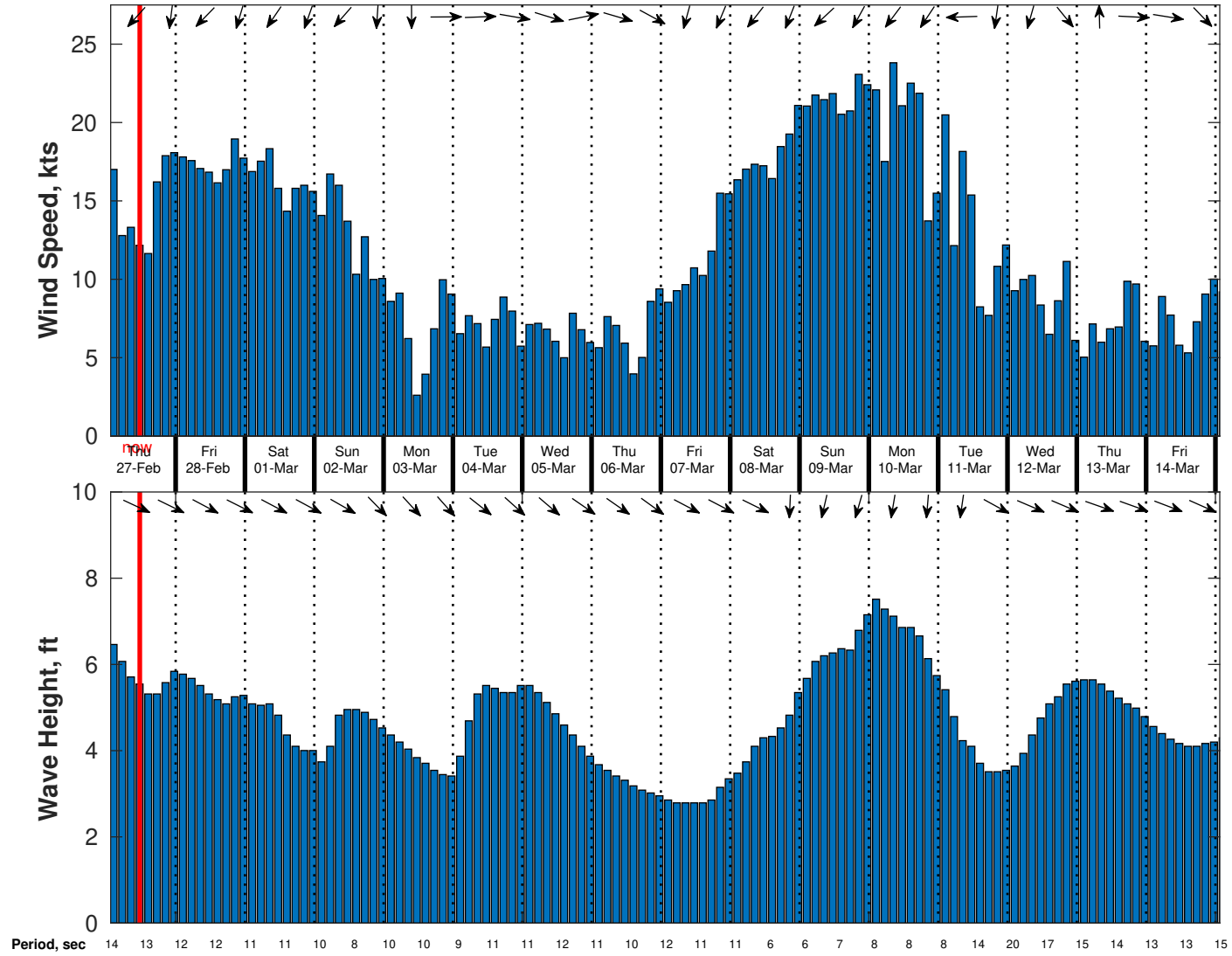
Sunday

Winds: NE, 5-10 kts.
Waves: NW, 4-5 feet, 9-10 sec.
No currents available.

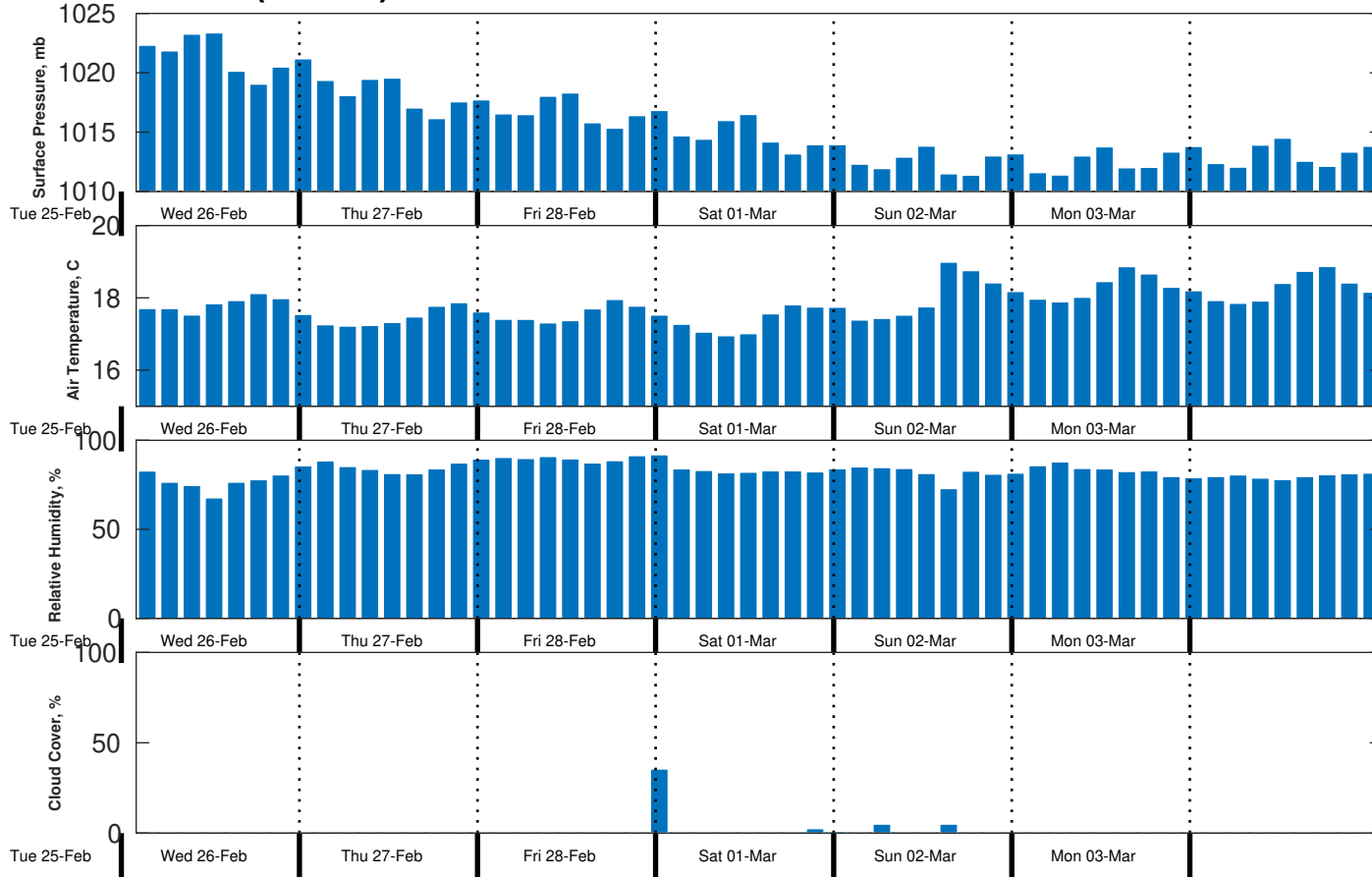
Sunday Night

Winds: W, 5-10 kts.
Waves: NW, 4-5 feet, 11-12 sec.
No currents available.

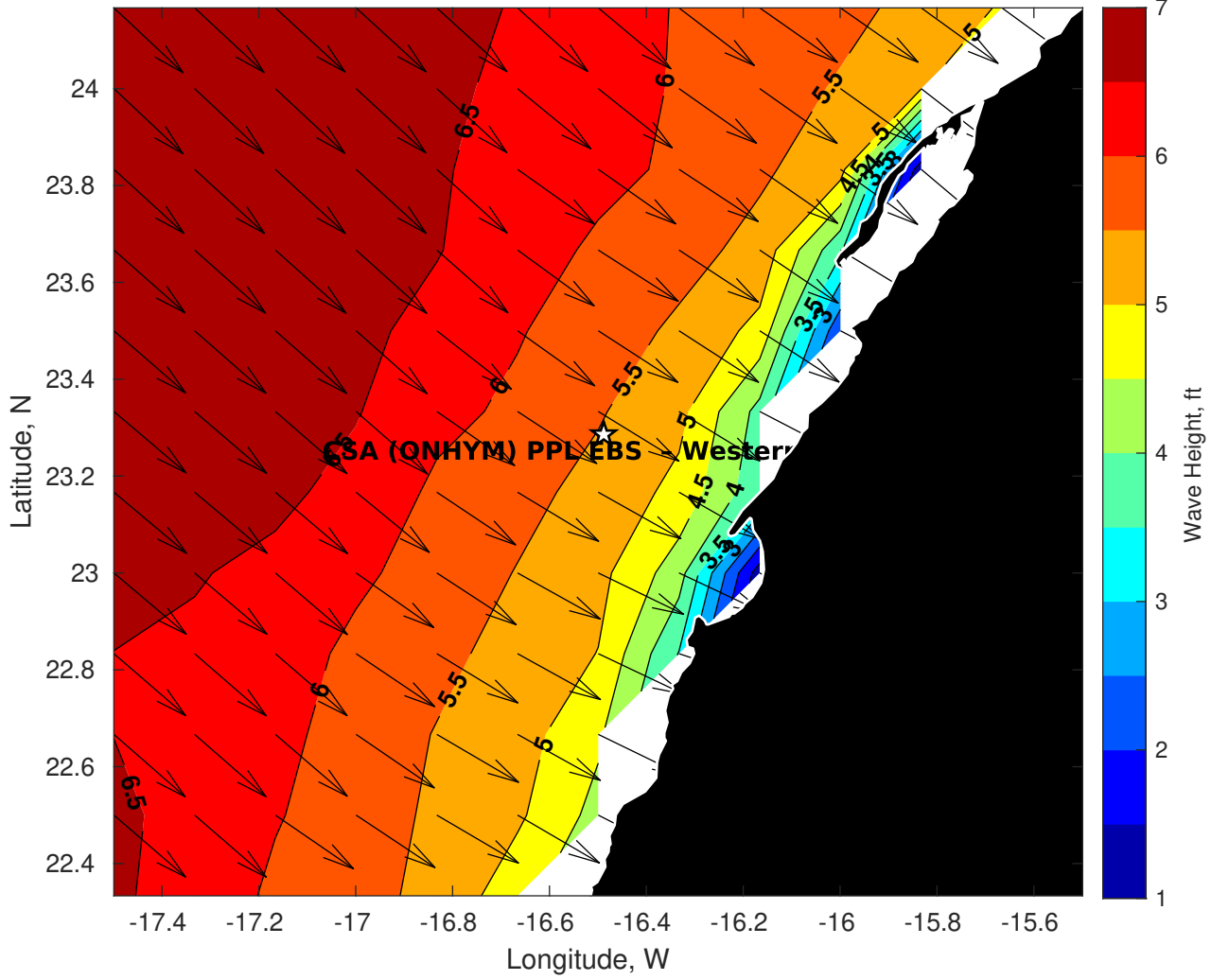
Wind & Wave Forecast for CSA (ONHYM) PPL EBS - Western Sahara from 26-Feb-2025 01:00:00 to 14-Mar-2025 01:00:00



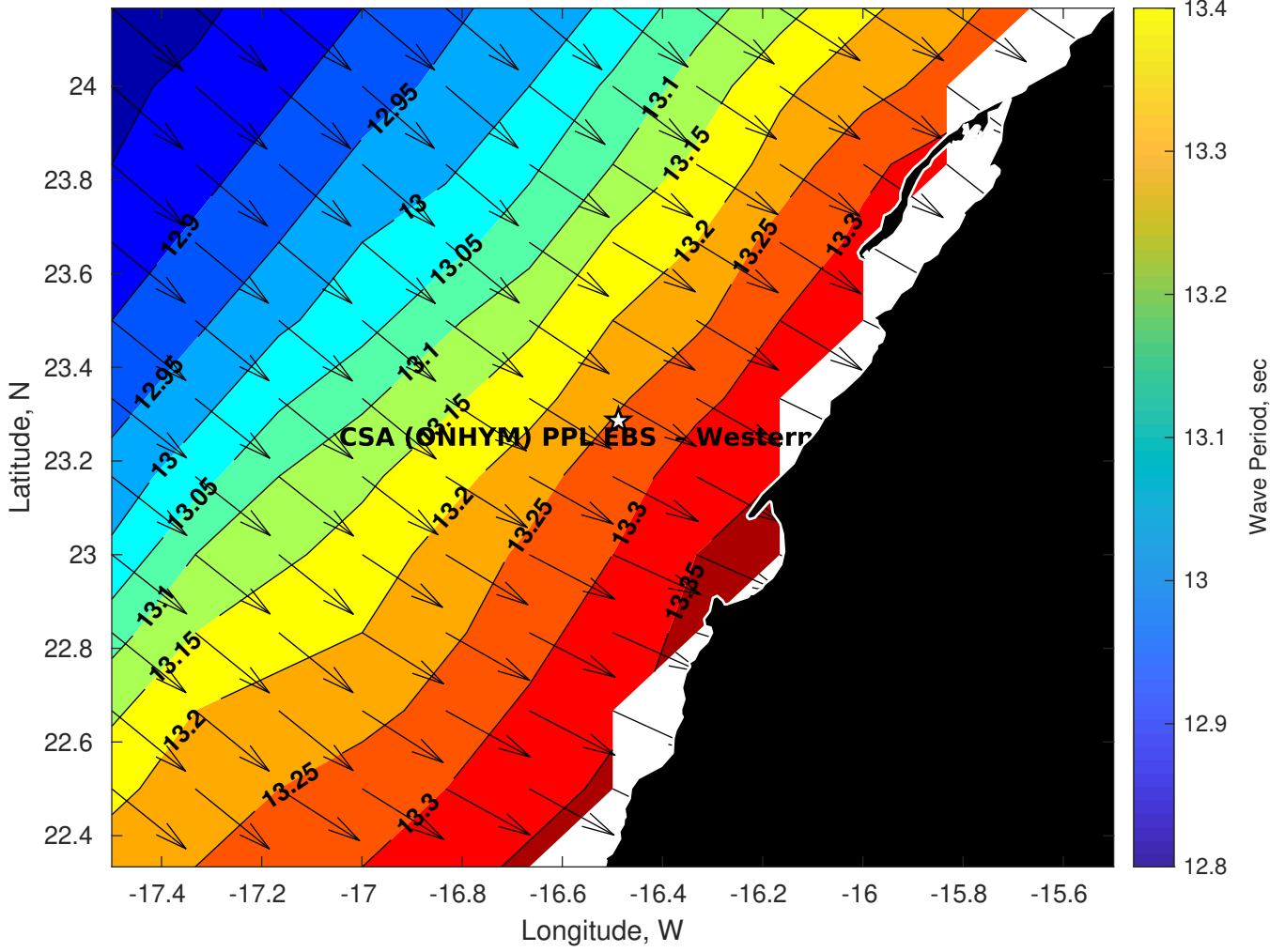
Met Forecast for CSA (ONHYM) PPL EBS - Western Sahara from 26-Feb-2025 00:00:00 to 05-Mar-2025 00:00:00



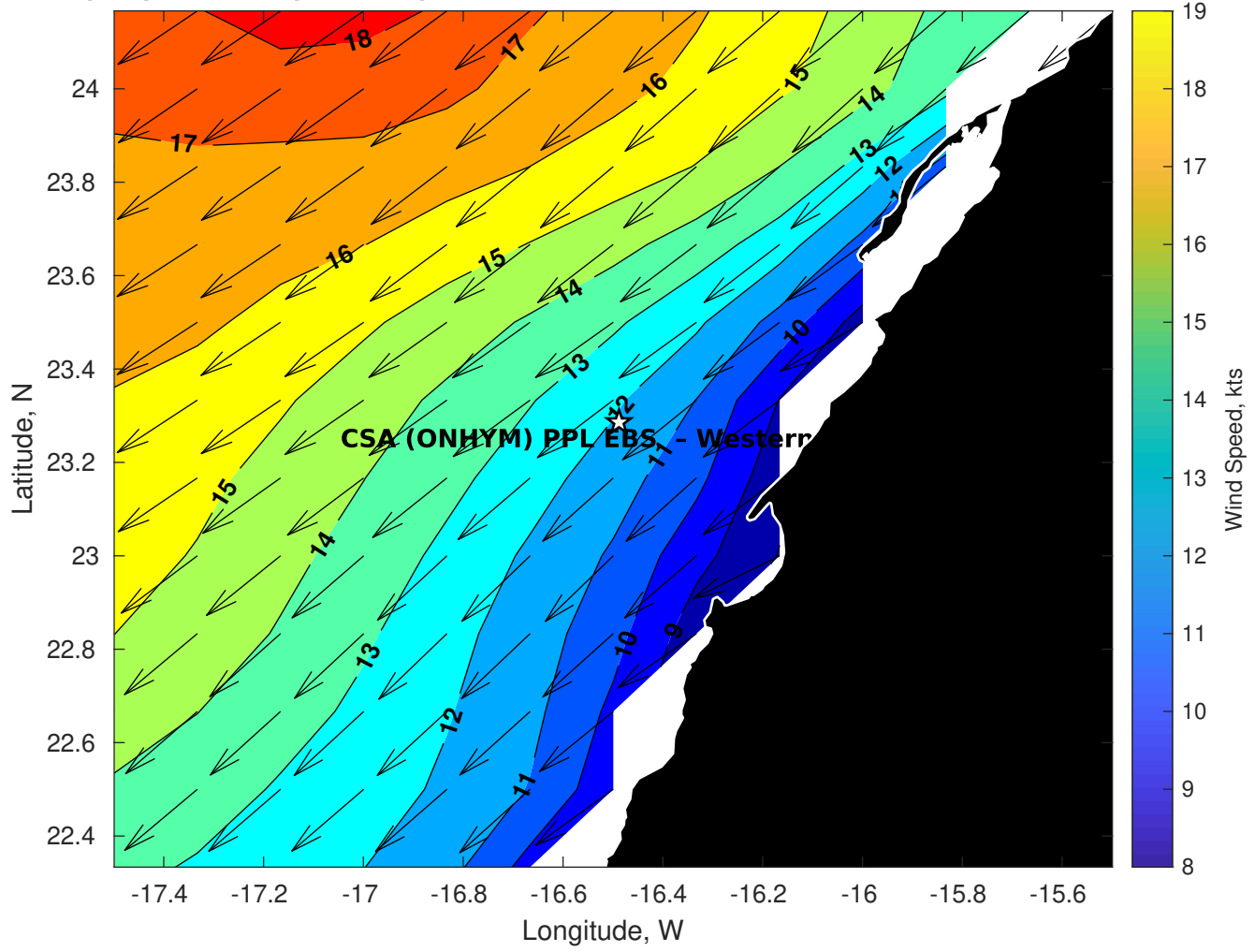
Wave Height (ft) for CSA (ONHYM) PPL EBS - Western Sahara at 26-Feb-2025 09:00:00



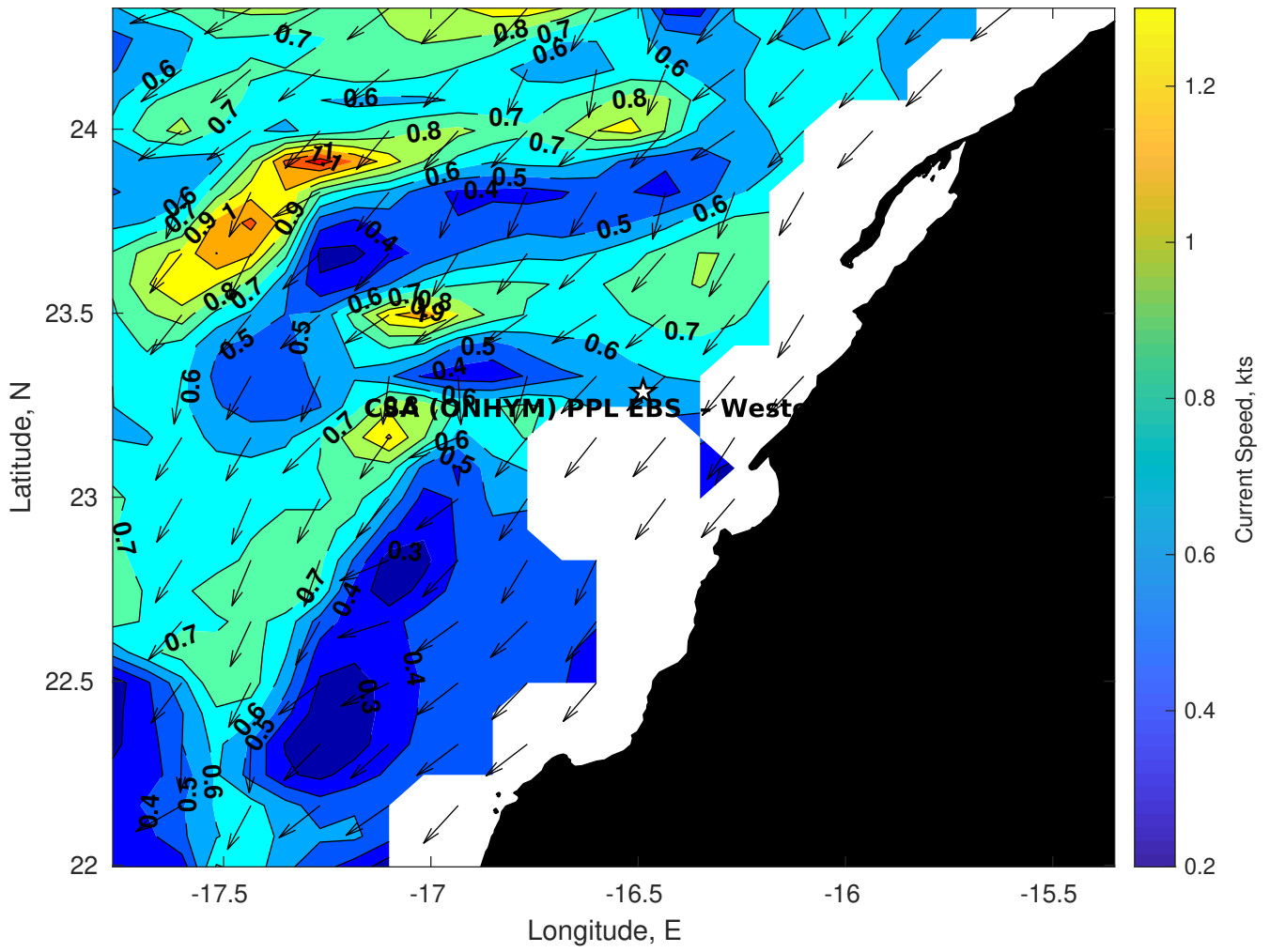
Wave Period (sec) for CSA (ONHYM) PPL EBS - Western Sahara at 26-Feb-2025 09:00:00



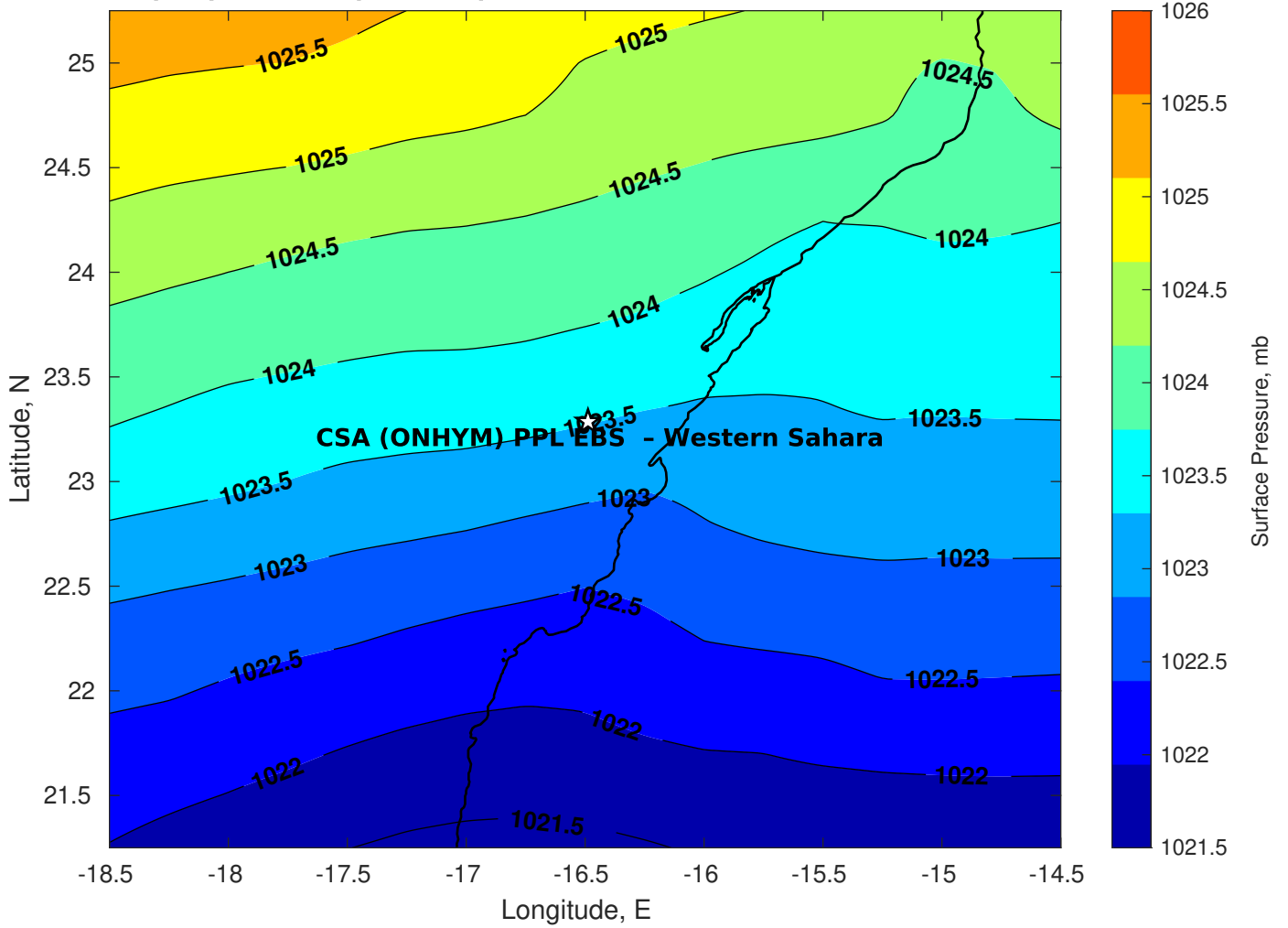
Winds (kts) for CSA (ONHYM) PPL EBS - Western Sahara at 26-Feb-2025 09:00:00



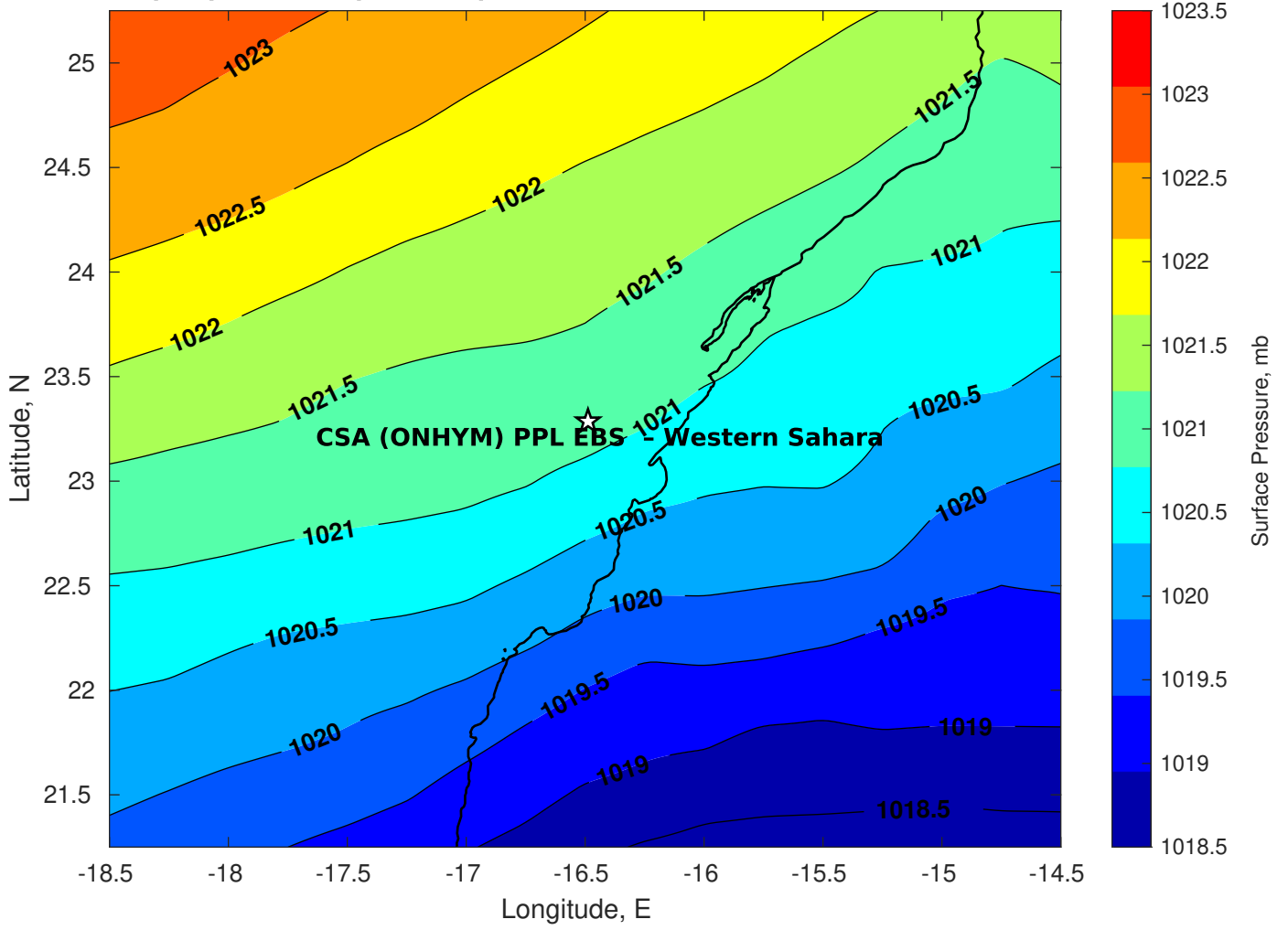
Surface Currents for CSA (ONHYM) PPL EBS - Western Sahara at 25-Feb-2025 00:00:00



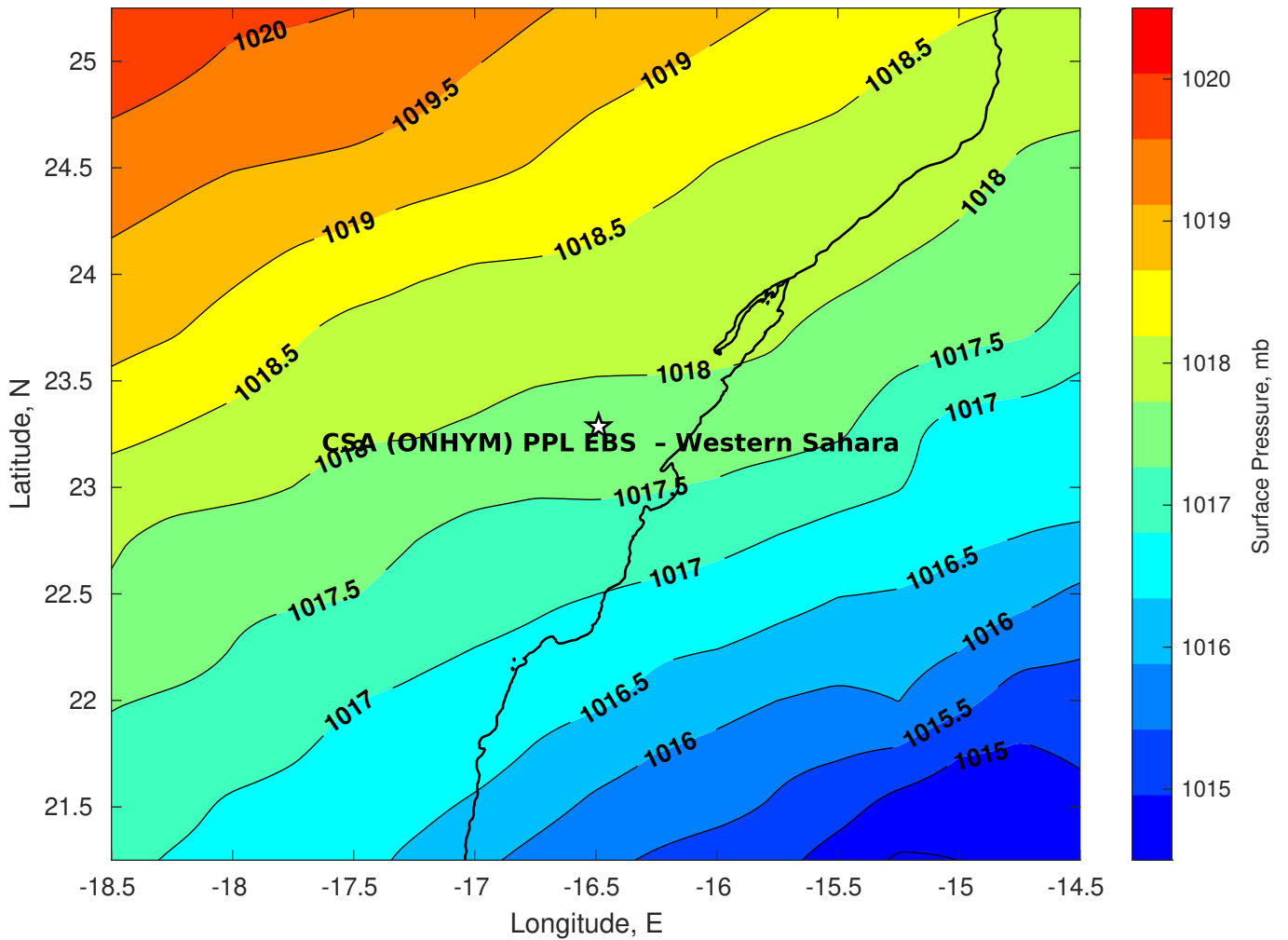
Surface Pressure (mb) for CSA (ONHYM) PPL EBS - Western Sahara at 26-Feb-2025 00:00:00



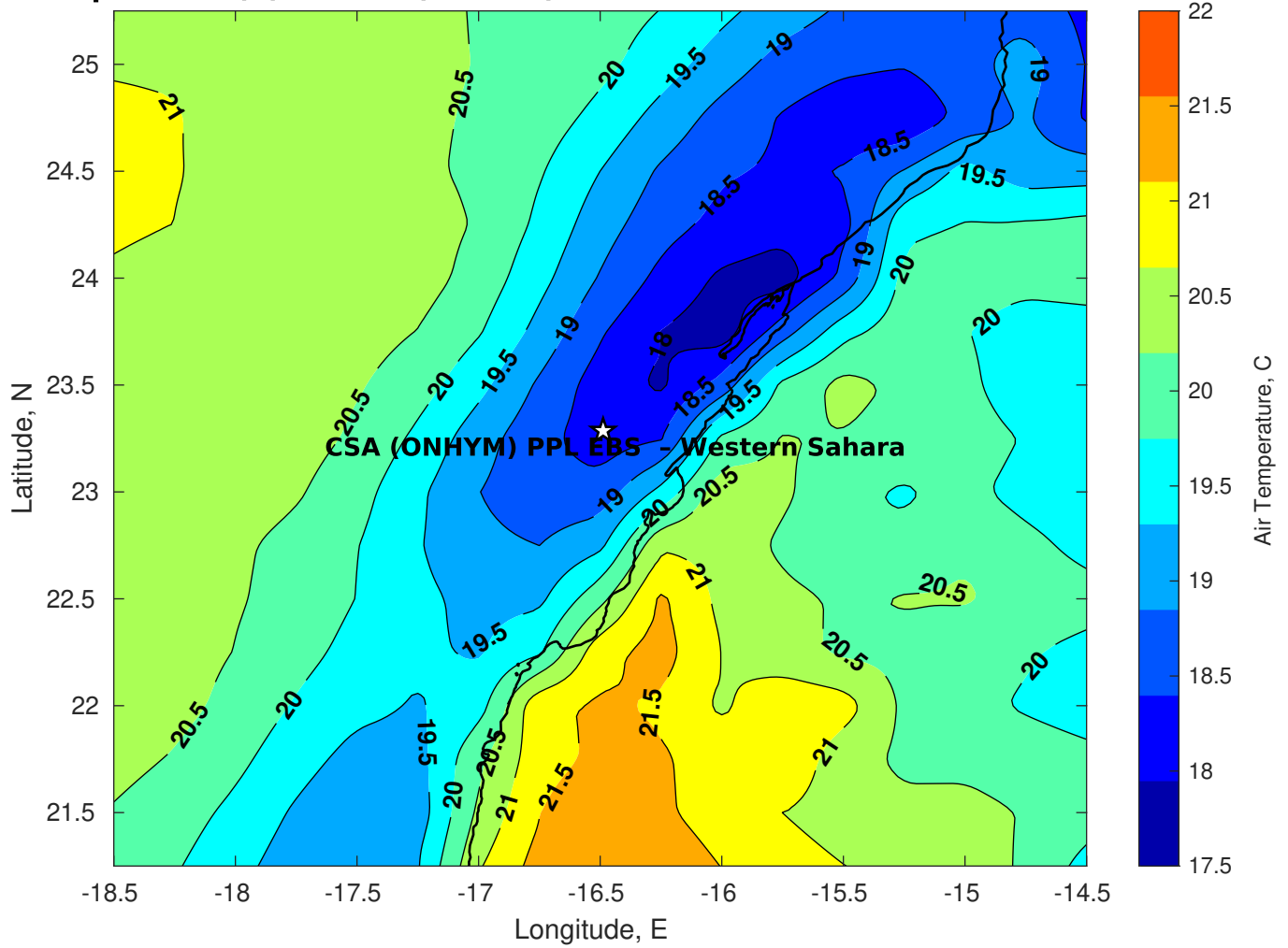
Surface Pressure (mb) for CSA (ONHYM) PPL EBS - Western Sahara at 27-Feb-2025 00:00:00



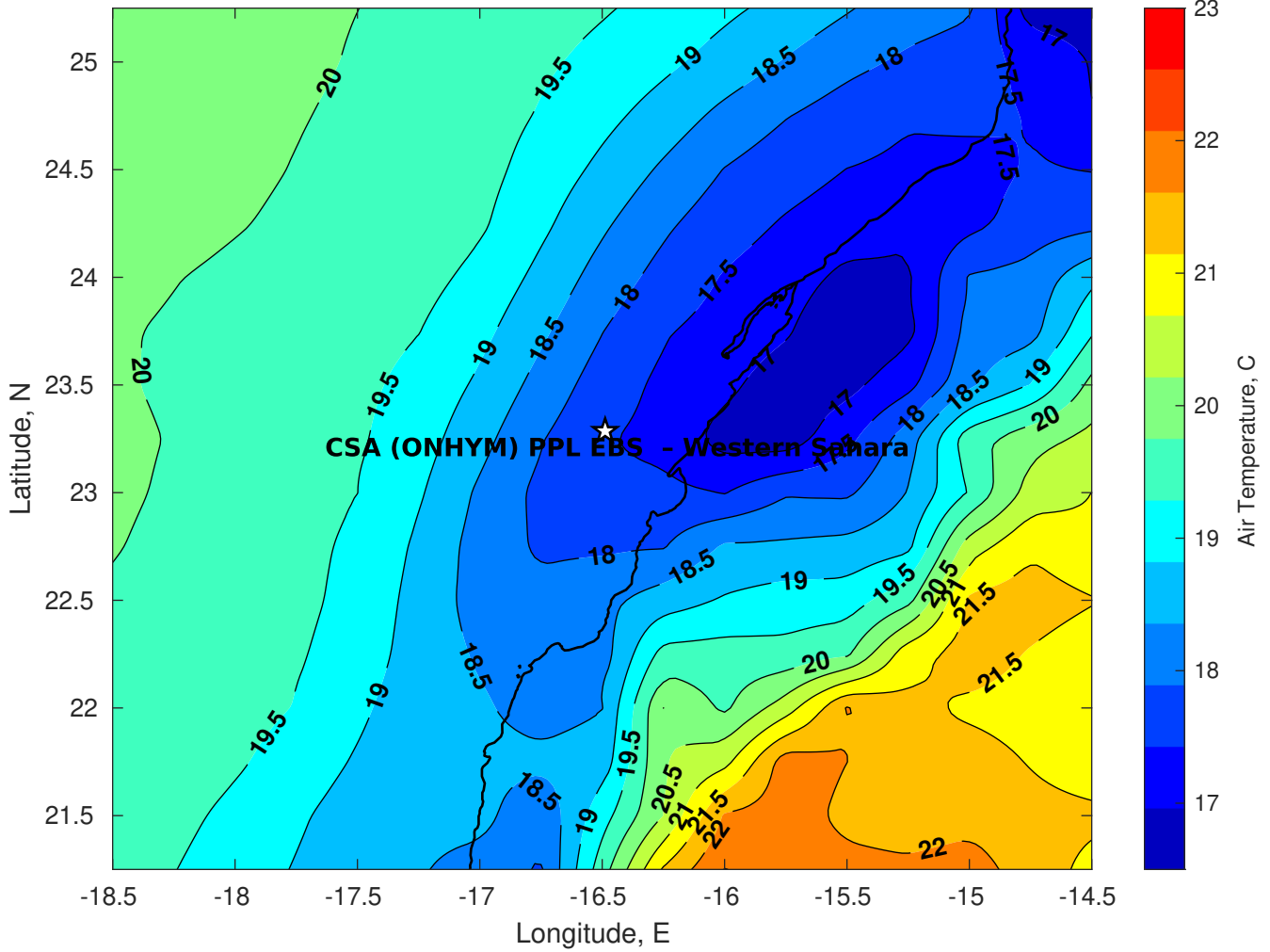
Surface Pressure (mb) for CSA (ONHYM) PPL EBS - Western Sahara at 28-Feb-2025 00:00:00



Air Temperature (C) for CSA (ONHYM) PPL EBS - Western Sahara at 26-Feb-2025



Air Temperature (C) for CSA (ONHYM) PPL EBS - Western Sahara at 26-Feb-2025



Air Temperature (C) for CSA (ONHYM) PPL EBS - Western Sahara at 26-Feb-2025

