
Marine Weather Forecast for CTI Enbridge Kaskida & Tiber PPL Geotechnical
Forecast valid as of 26-Feb-2025 0900 GMT

All times are local.

Today

Winds: NE, 10-15 kts.
Waves: E, 2-3 feet, 6-7 sec.
No currents available.

Tonight

Winds: NE, 10-15 kts.
Waves: E, 2-3 feet, 5-6 sec.
No currents available.

Thursday

Winds: E, 5-10 kts.
Waves: NE, 2-3 feet, 5-6 sec.
No currents available.

Thursday Night

Winds: NE, 10-15 kts.
Waves: NW, 3-4 feet, 6-7 sec.
No currents available.

Friday

Winds: E, 10-15 kts.
Waves: NE, 2-3 feet, 6-7 sec.
No currents available.

Friday Night

Winds: NE, 5-10 kts.
Waves: E, 1-2 feet, 4-5 sec.
No currents available.

Saturday

Winds: NE, 10-15 kts.
Waves: NE, 1-2 feet, 4-5 sec.
No currents available.

Saturday Night

Winds: E, 5-10 kts.
Waves: NE, 1-2 feet, 3-4 sec.
No currents available.

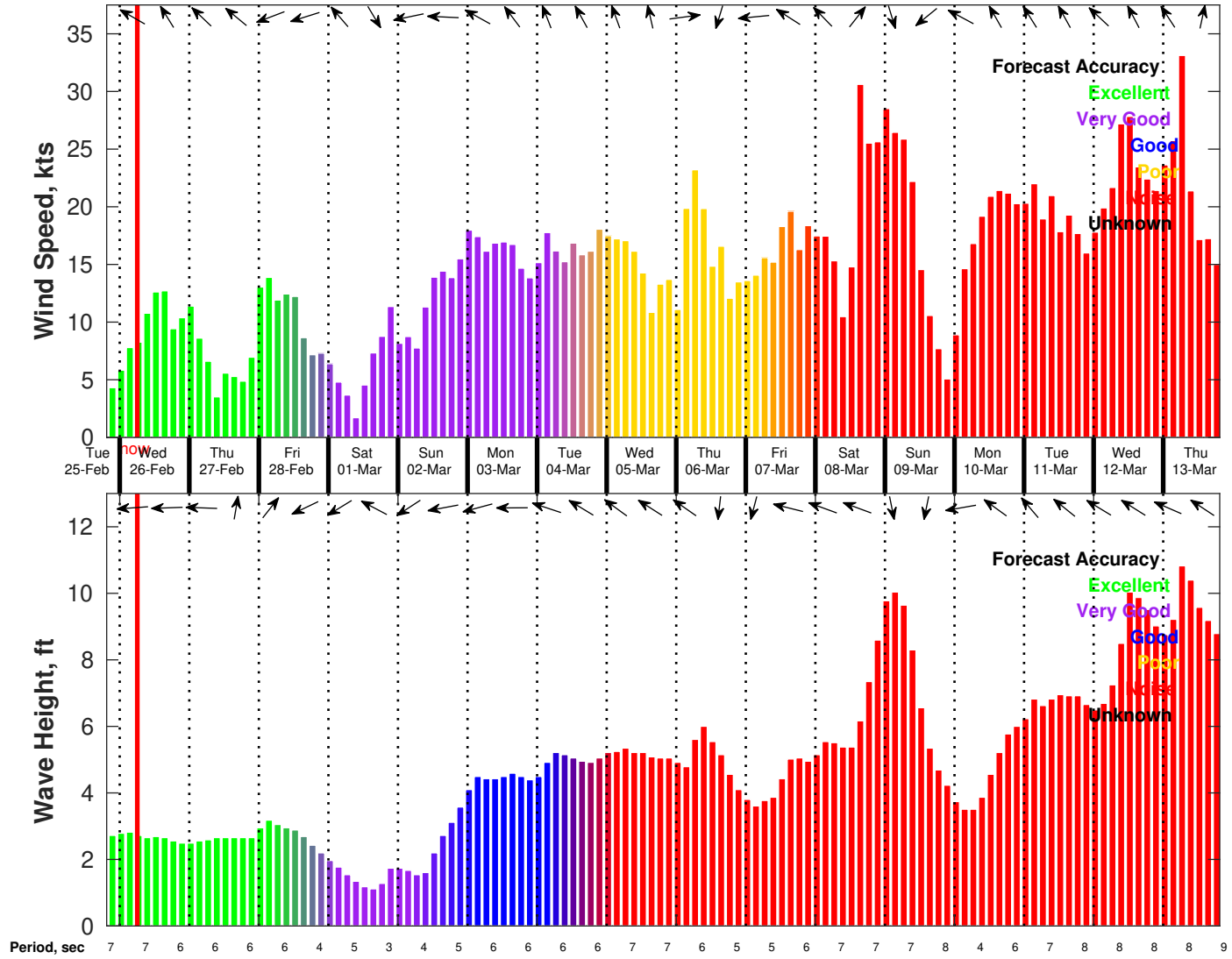
Sunday

Winds: E, 15-20 kts.
Waves: E, 3-4 feet, 4-5 sec.
No currents available.

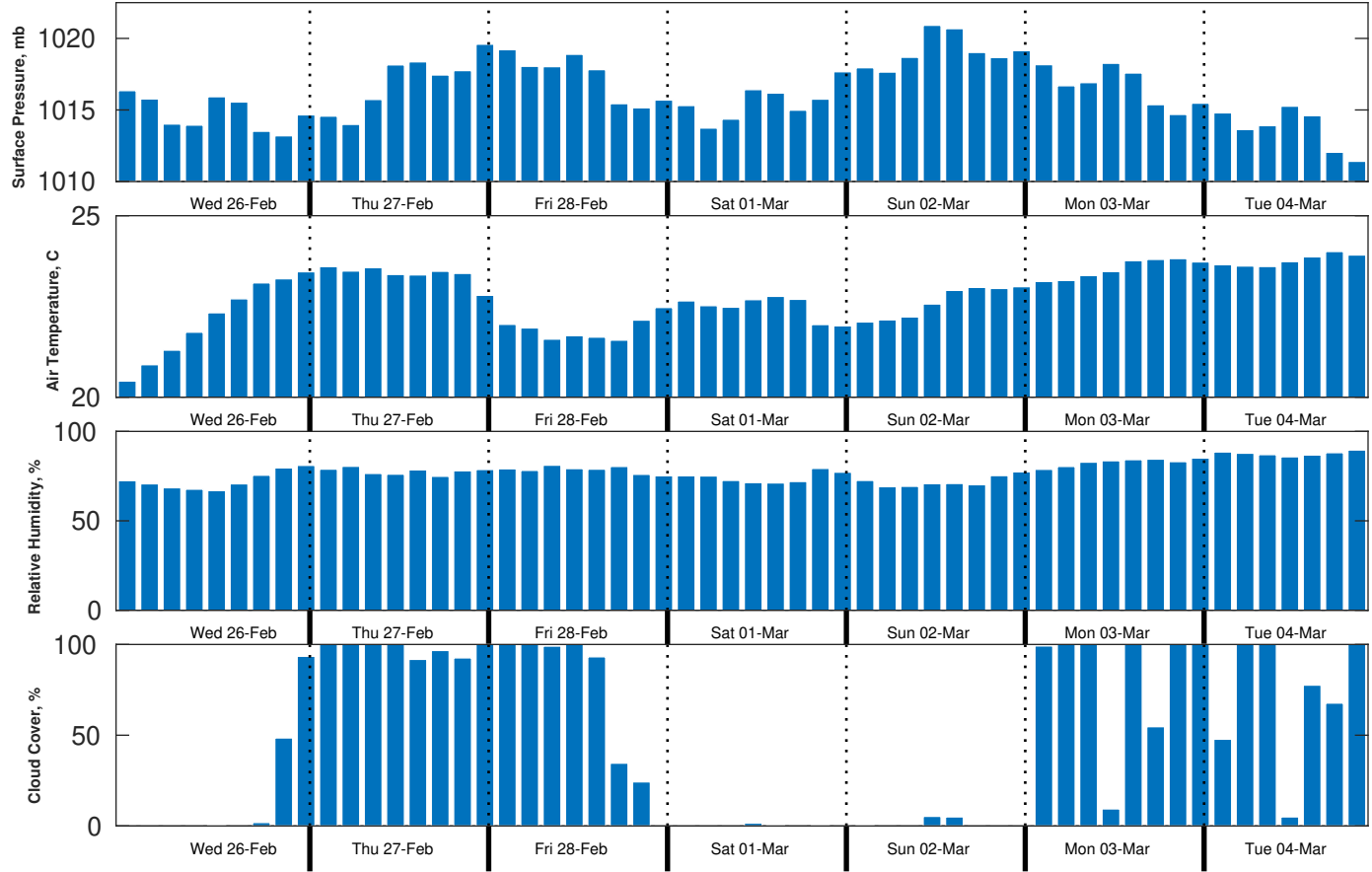
Sunday Night

Winds: NE, 15-20 kts.
Waves: E, 4-5 feet, 5-6 sec.
No currents available.

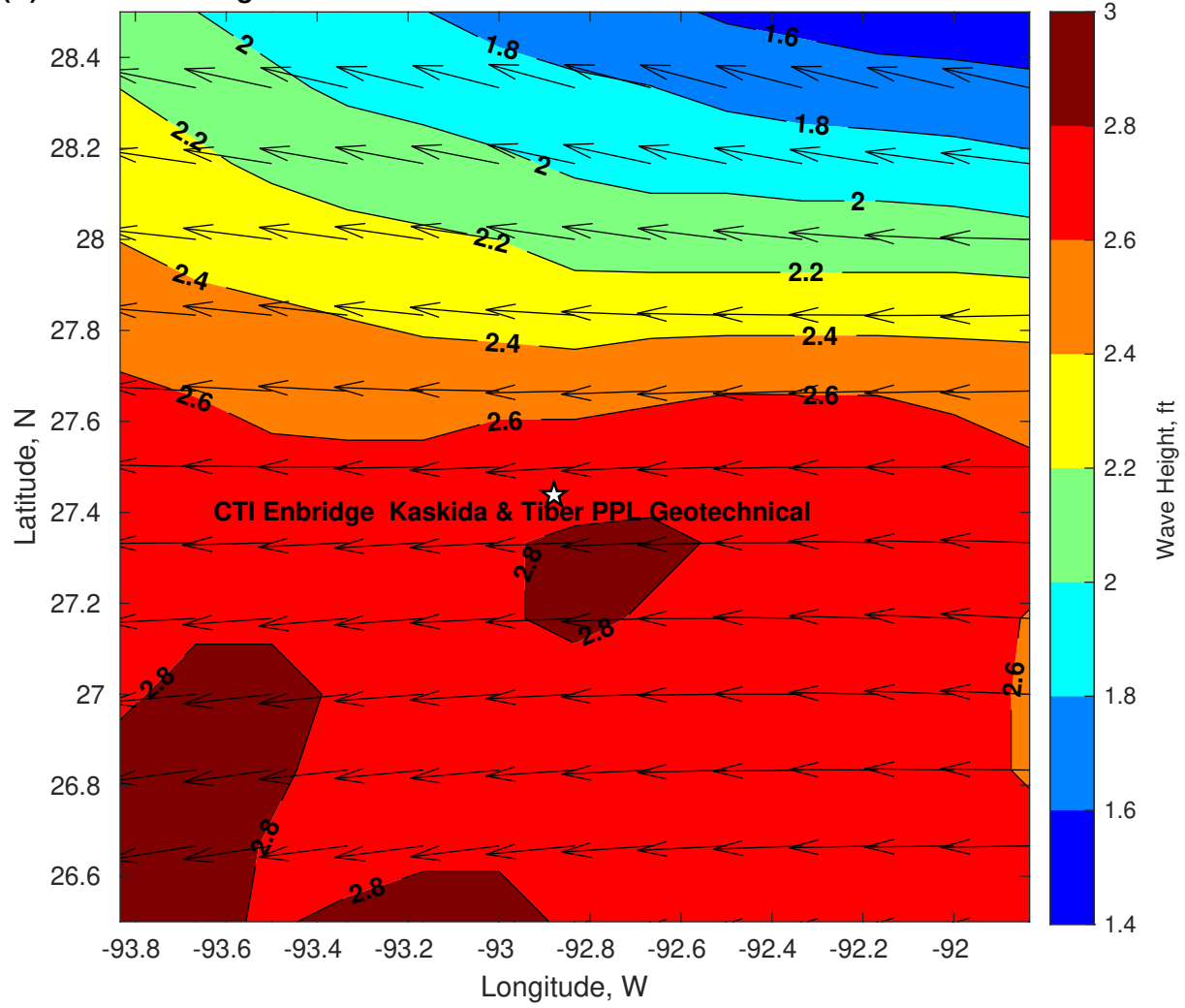
Wind & Wave Forecast for CTI Enbridge Kaskida & Tiber PPL Geotechnical from 25-Feb-2025 20:00:00 to 13-Mar-2025 20:00:00



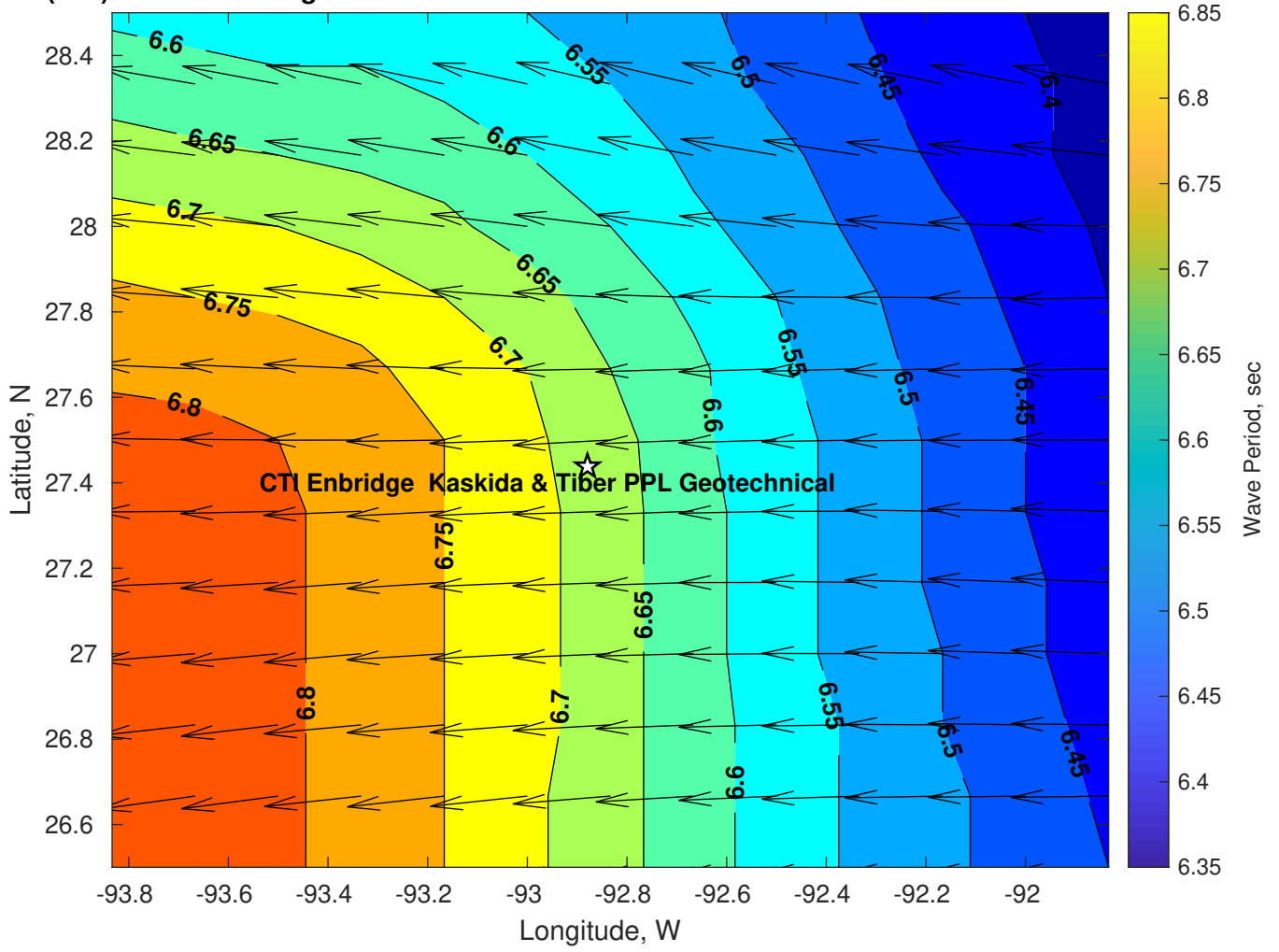
Met Forecast for CTI Enbridge Kaskida & Tiber PPL Geotechnical from 26-Feb-2025 00:00:00 to 05-Mar-2025 00:00:00



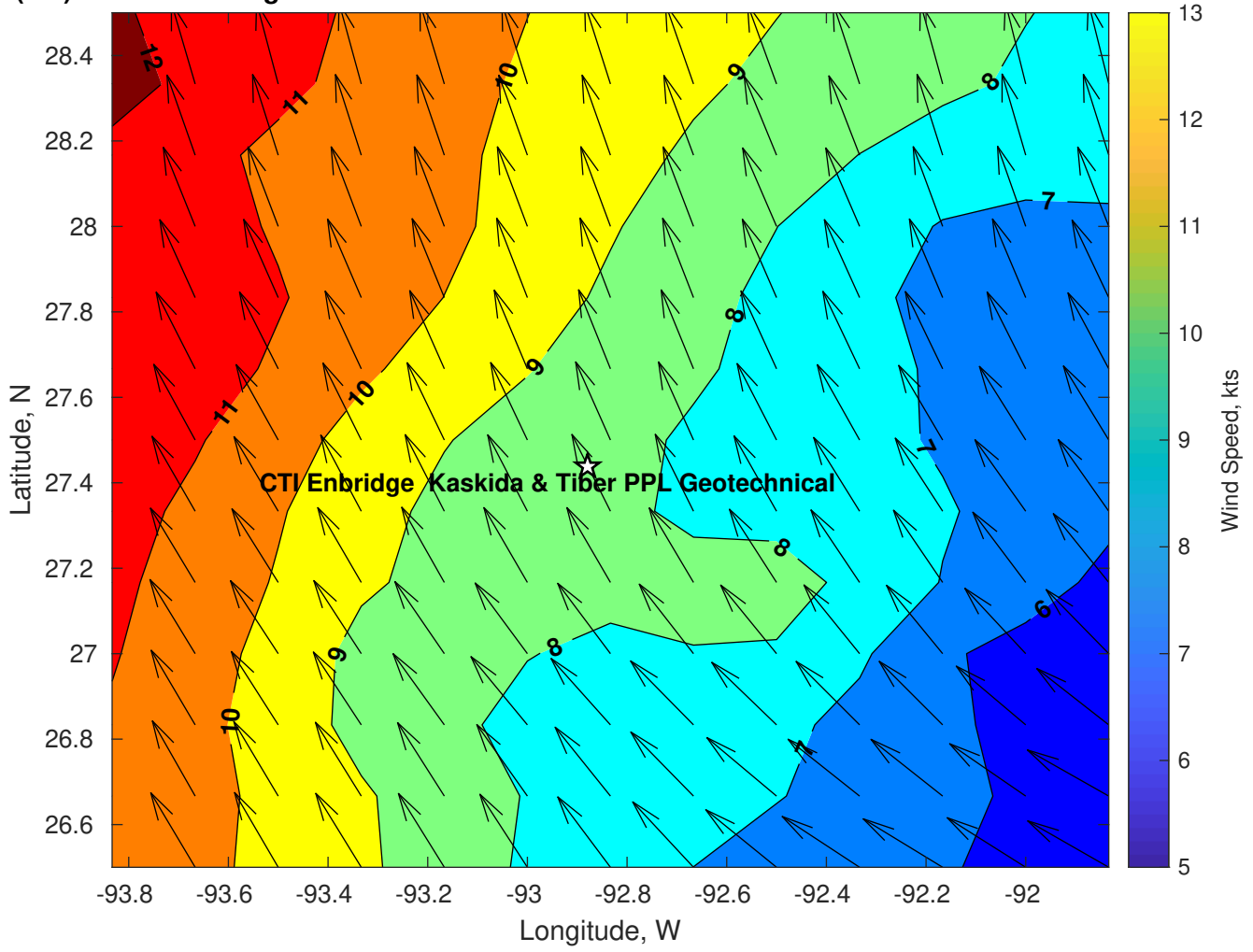
Wave Height (ft) for CTI Enbridge Kaskida & Tiber PPL Geotechnical at 26-Feb-2025 09:00:00



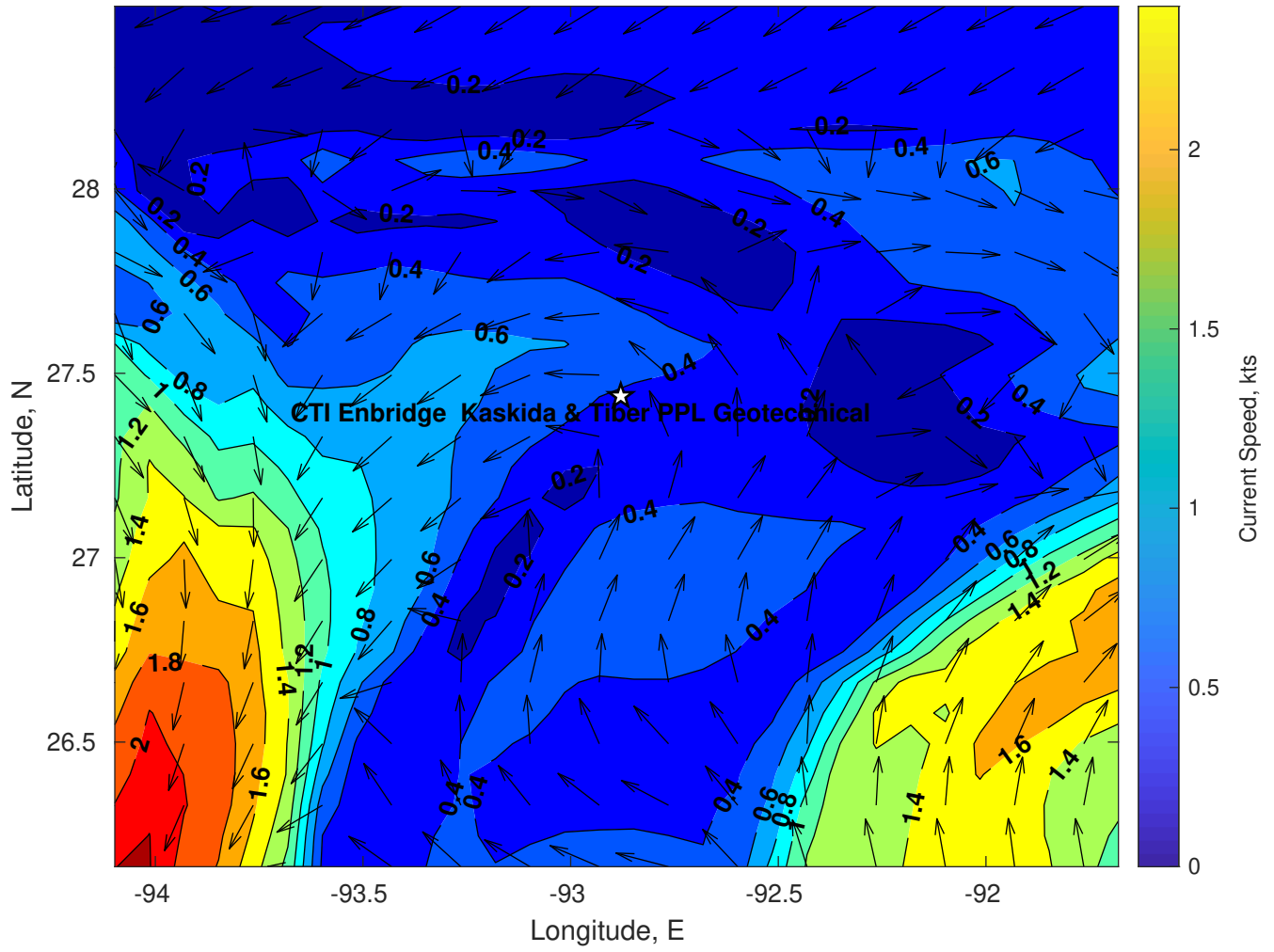
Wave Period (sec) for CTI Enbridge Kaskida & Tiber PPL Geotechnical at 26-Feb-2025 09:00:00



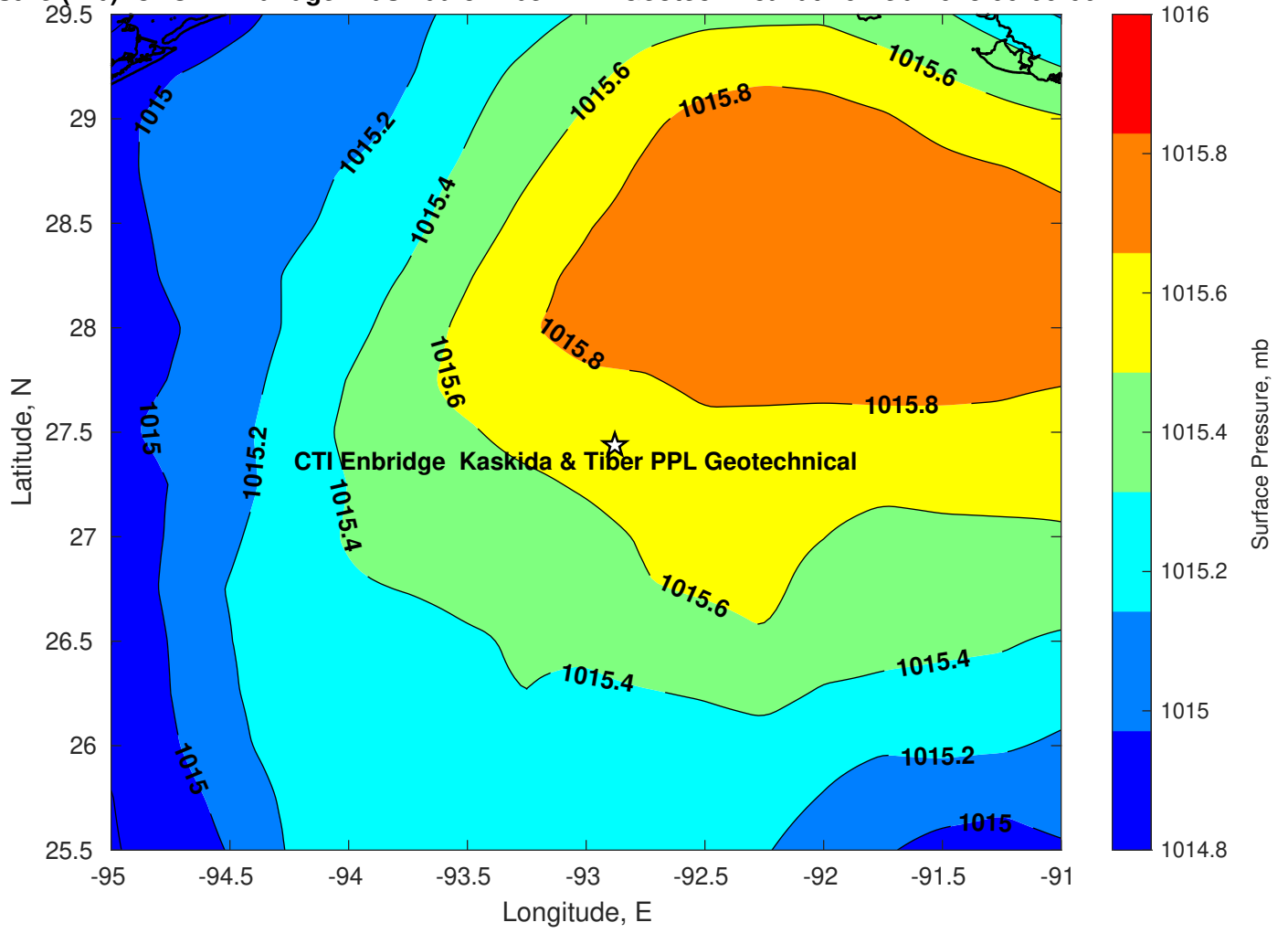
Winds (kts) for CTI Enbridge Kaskida & Tiber PPL Geotechnical at 26-Feb-2025 09:00:00



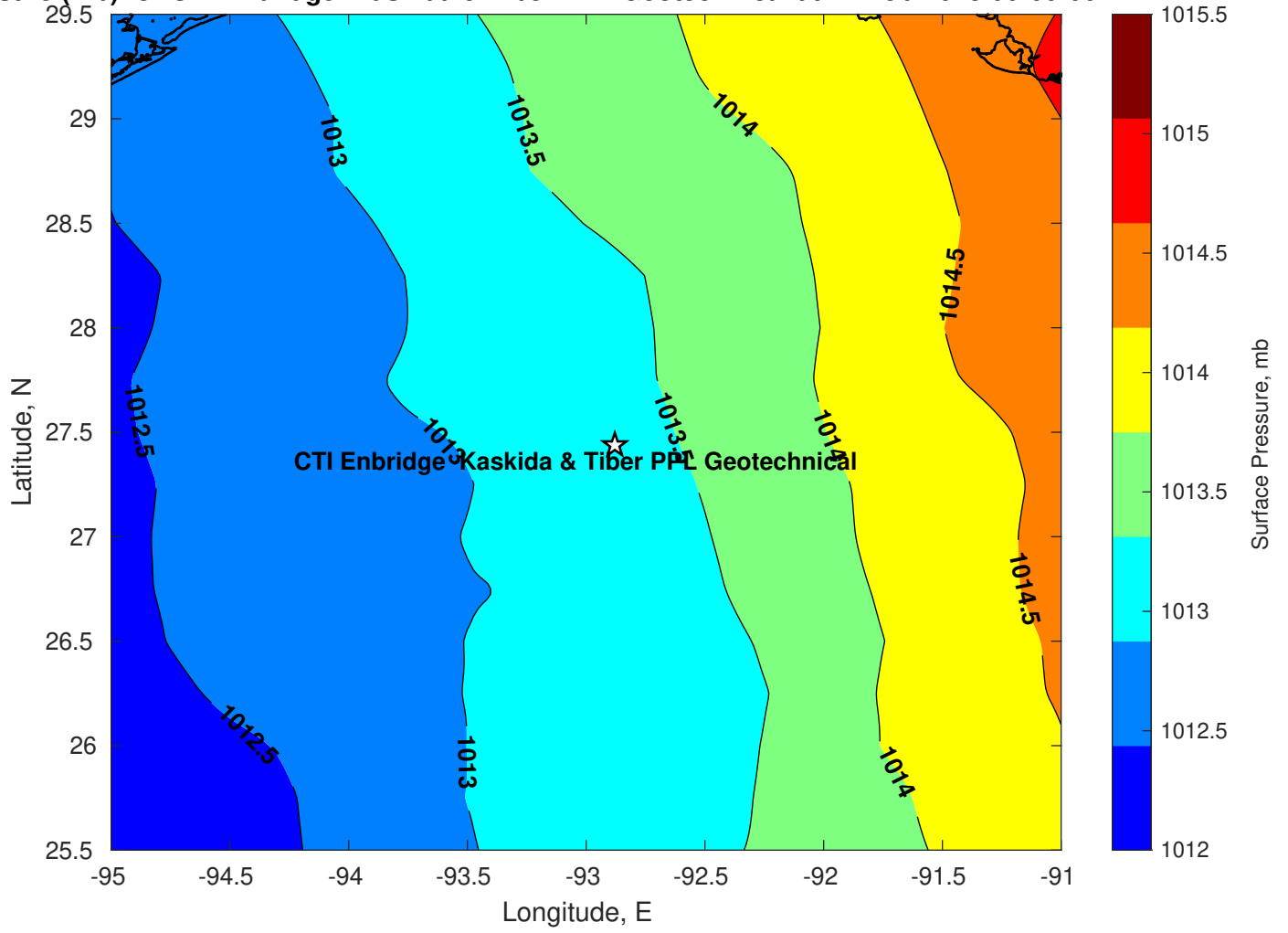
Surface Currents for CTI Enbridge Kaskida & Tiber PPL Geotechnical at 25-Feb-2025 00:00:00



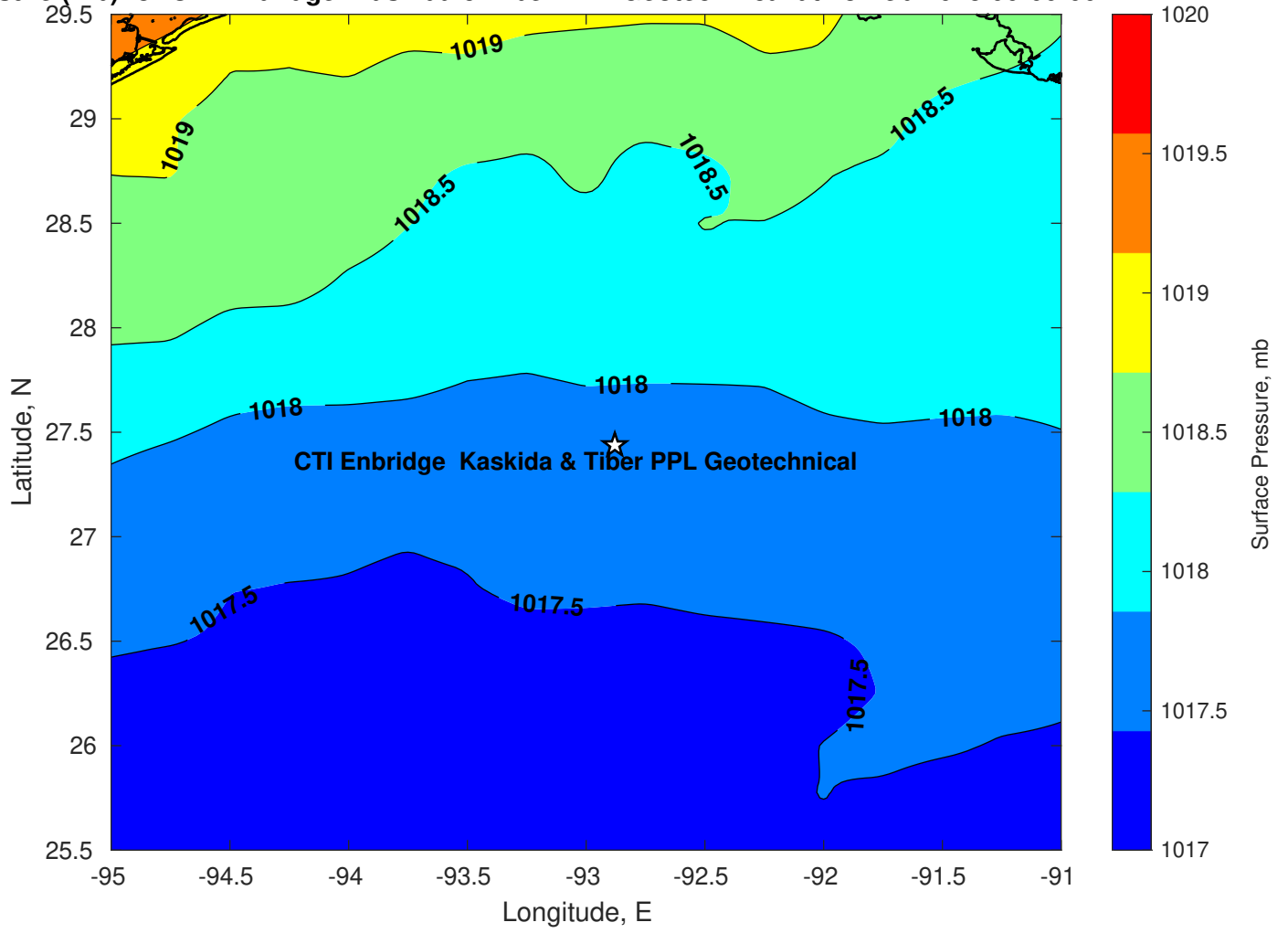
Surface Pressure (mb) for CTI Enbridge Kaskida & Tiber PPL Geotechnical at 26-Feb-2025 00:00:00



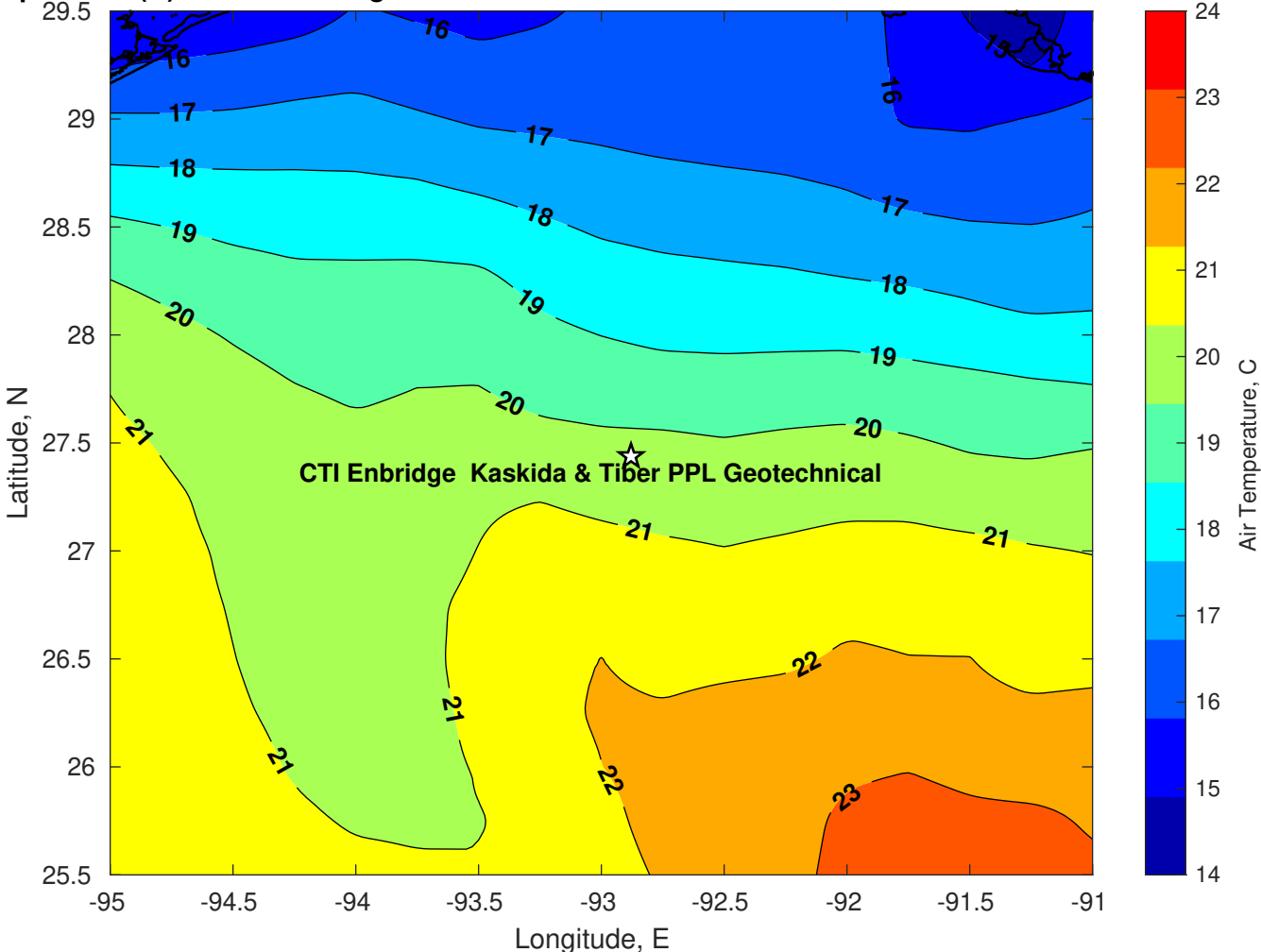
Surface Pressure (mb) for CTI Enbridge Kaskida & Tiber PPL Geotechnical at 27-Feb-2025 00:00:00



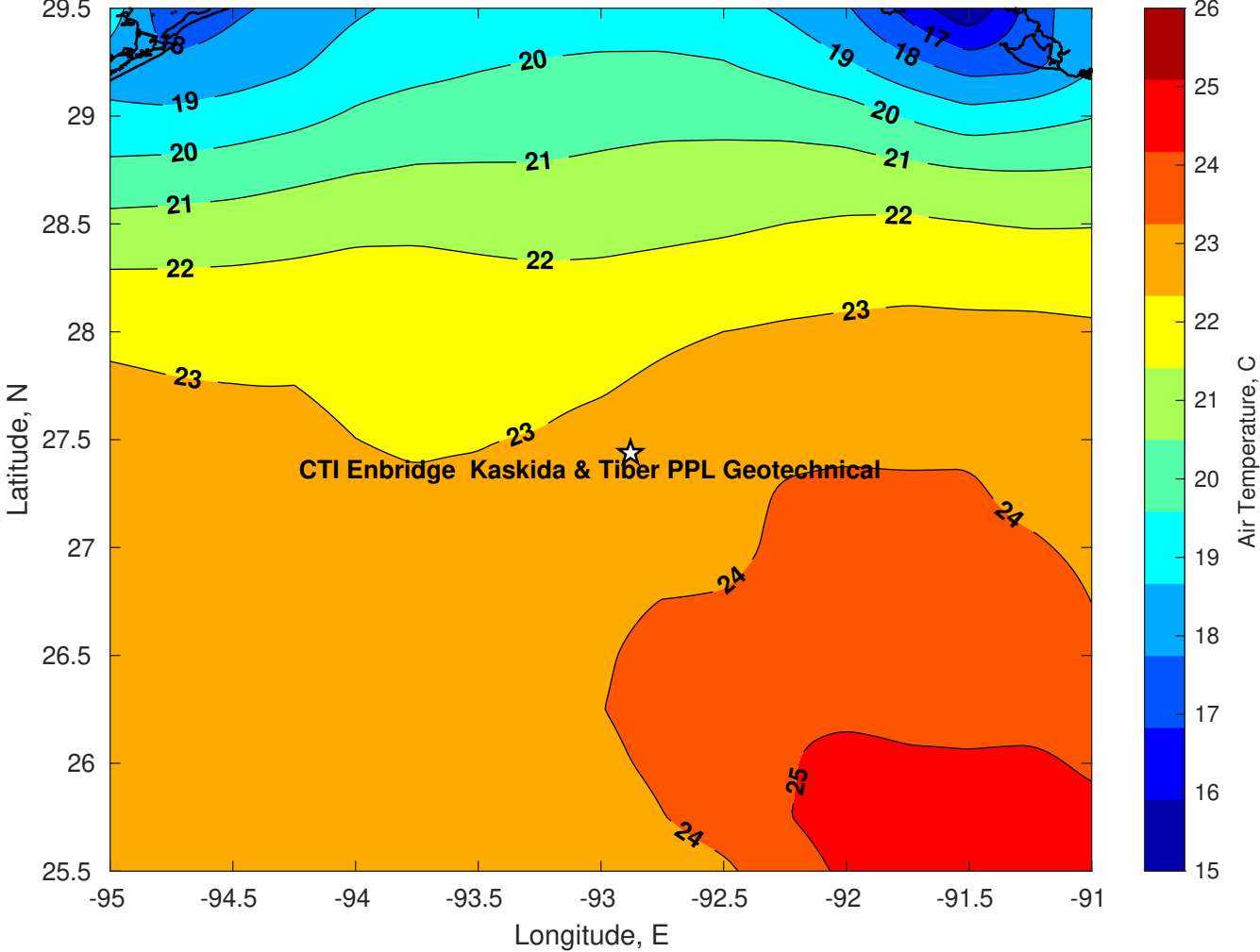
Surface Pressure (mb) for CTI Enbridge Kaskida & Tiber PPL Geotechnical at 28-Feb-2025 00:00:00



Air Temperature (C) for CTI Enbridge Kaskida & Tiber PPL Geotechnical at 26-Feb-2025



Air Temperature (C) for CTI Enbridge Kaskida & Tiber PPL Geotechnical at 26-Feb-2025



Air Temperature (C) for CTI Enbridge Kaskida & Tiber PPL Geotechnical at 26-Feb-2025

