
Marine Weather Forecast for CSL Shell Nigeria
Forecast valid as of 27-Feb-2025 0900 GMT

All times are local.

Today

Winds: N, 5-10 kts.
Waves: N, 2-3 feet, 17-18 sec.
No currents available.

Tonight

Winds: NW, 10-15 kts.
Waves: N, 2-3 feet, 16-17 sec.
No currents available.

Friday

Winds: N, 10-15 kts.
Waves: N, 2-3 feet, 15-16 sec.
No currents available.

Friday Night

Winds: NW, 10-15 kts.
Waves: N, 3-4 feet, 14-15 sec.
No currents available.

Saturday

Winds: NW, 10-15 kts.
Waves: N, 3-4 feet, 14-15 sec.
No currents available.

Saturday Night

Winds: NW, 10-15 kts.
Waves: N, 2-3 feet, 13-14 sec.
No currents available.

Sunday

Winds: NW, 10-15 kts.
Waves: N, 2-3 feet, 13-14 sec.
No currents available.

Sunday Night

Winds: NW, 15-20 kts.
Waves: N, 3-4 feet, 12-13 sec.
No currents available.

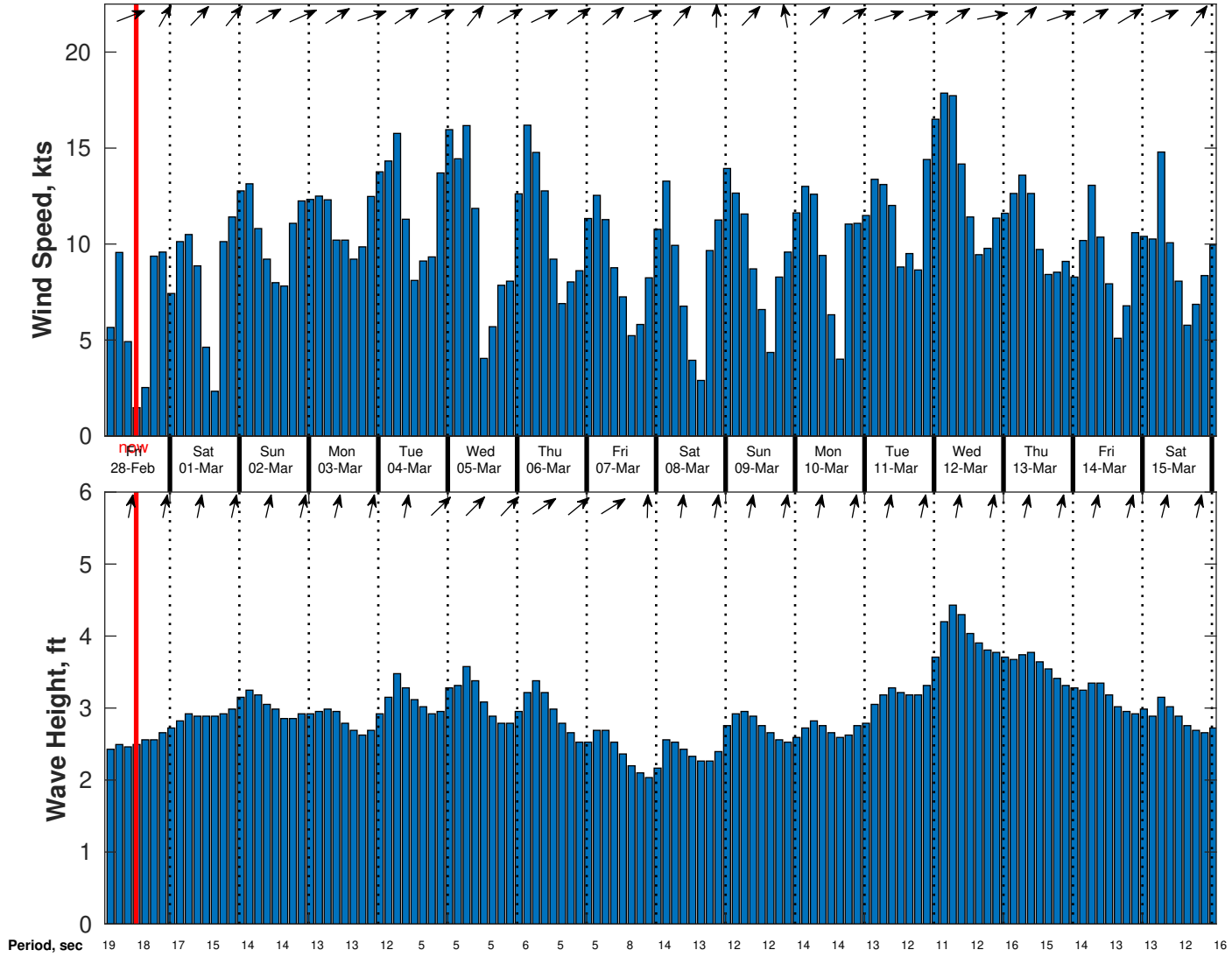
Monday

Winds: NW, 10-15 kts.
Waves: N, 3-4 feet, 11-12 sec.
No currents available.

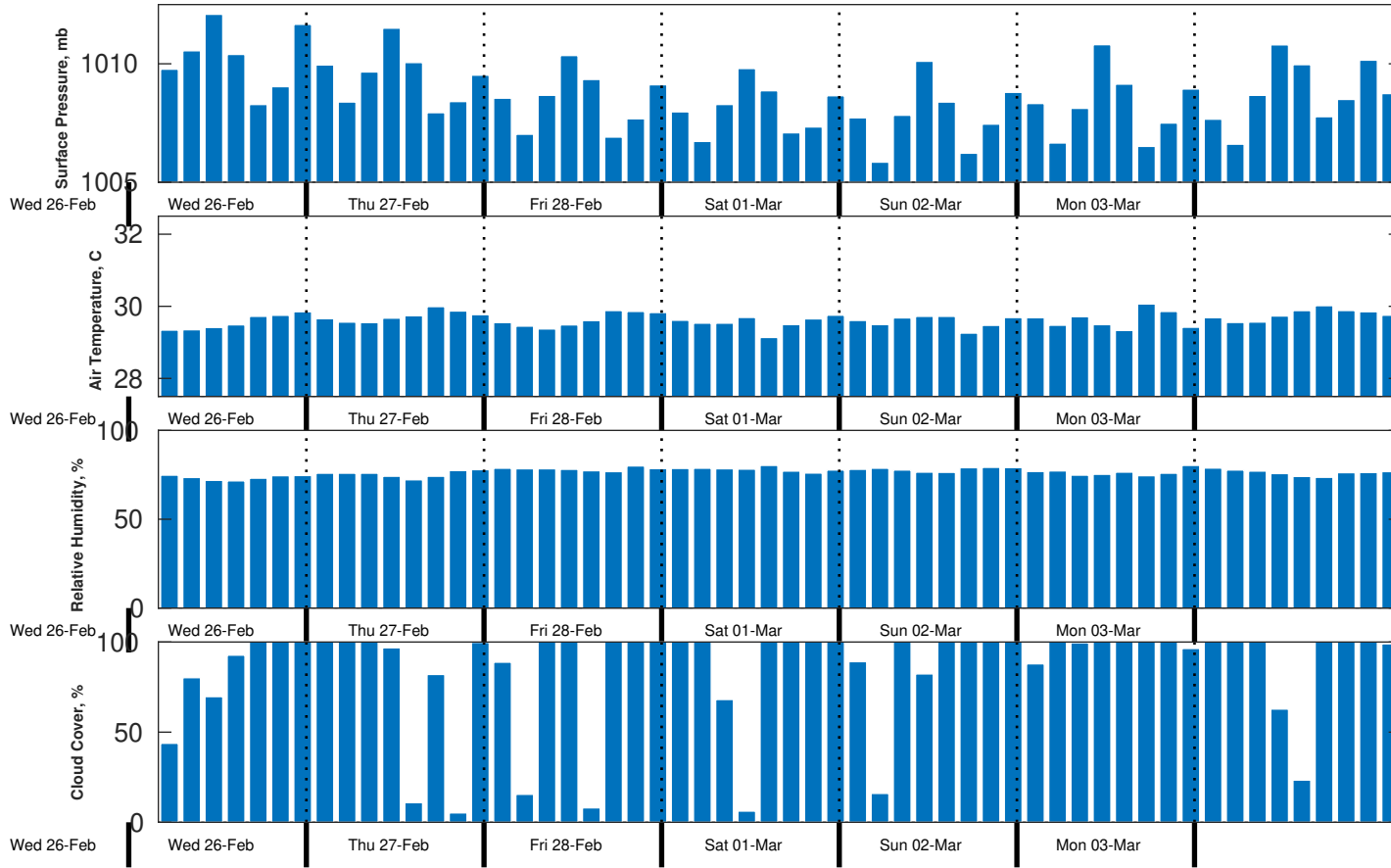
Monday Night

Winds: NW, 15-20 kts.
Waves: NW, 3-4 feet, 4-5 sec.
No currents available.

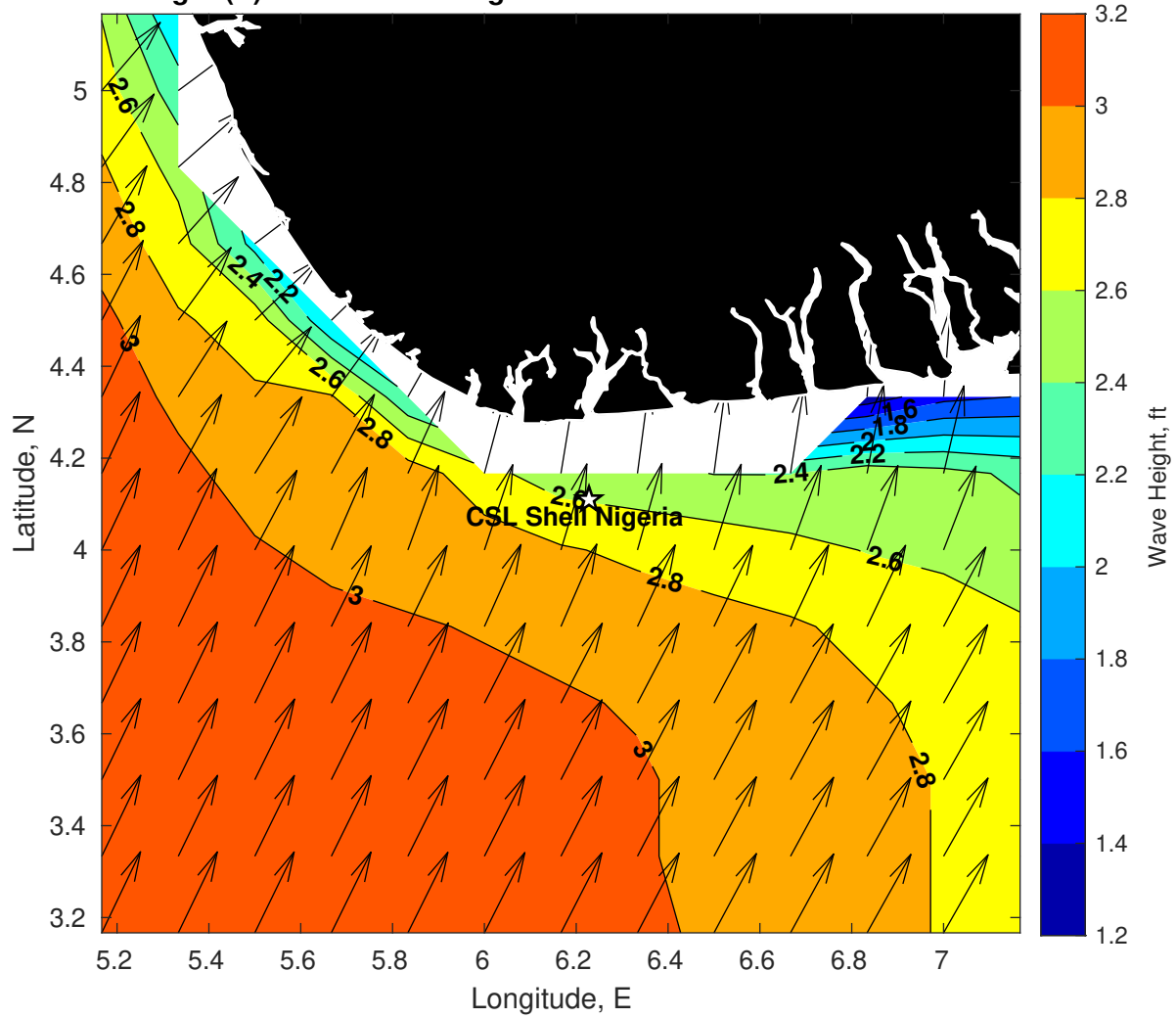
Wind & Wave Forecast for CSL Shell Nigeria from 27-Feb-2025 02:00:00 to 15-Mar-2025 02:00:00



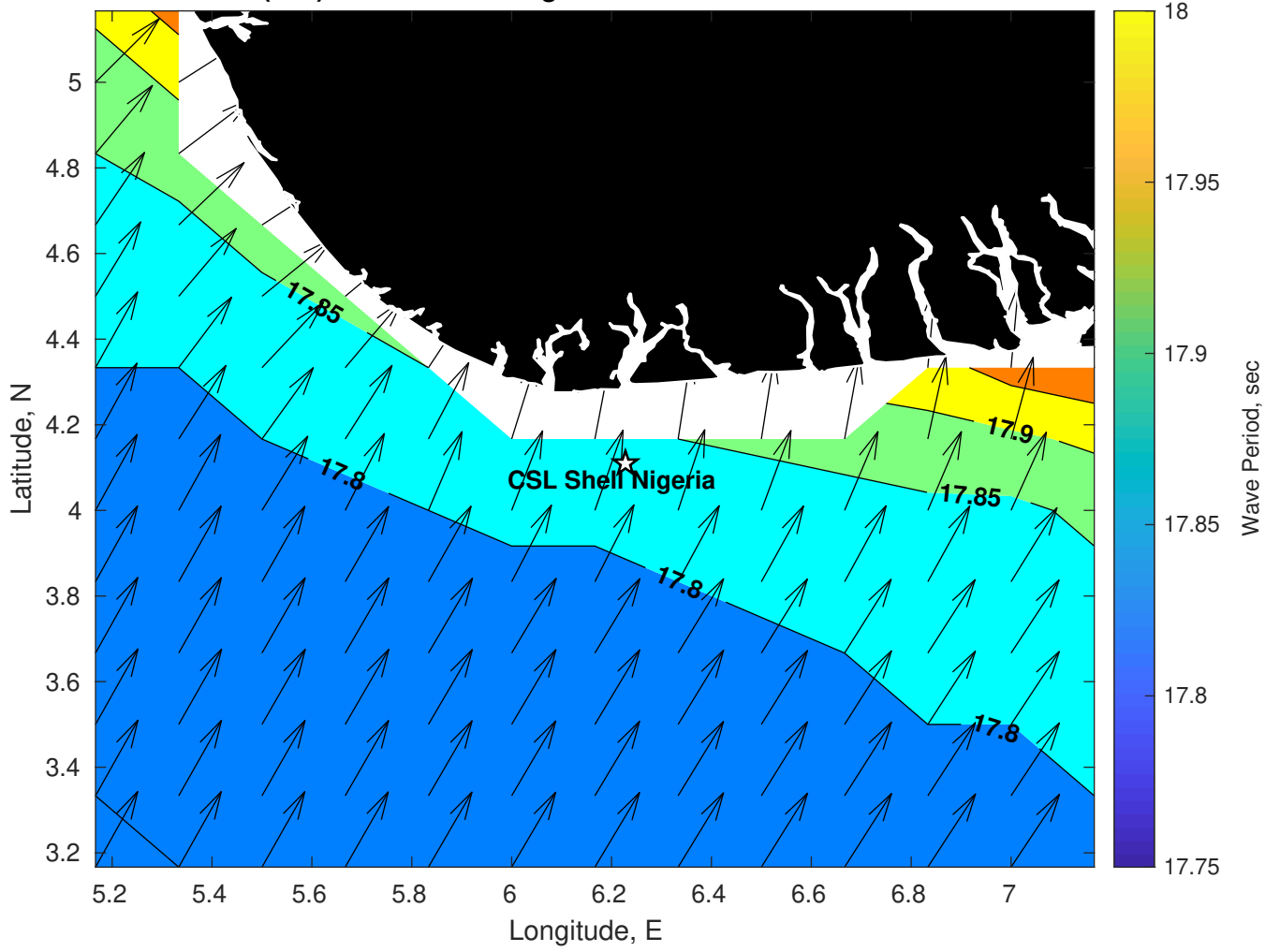
Met Forecast for CSL Shell Nigeria from 27-Feb-2025 00:00:00 to 06-Mar-2025 00:00:00



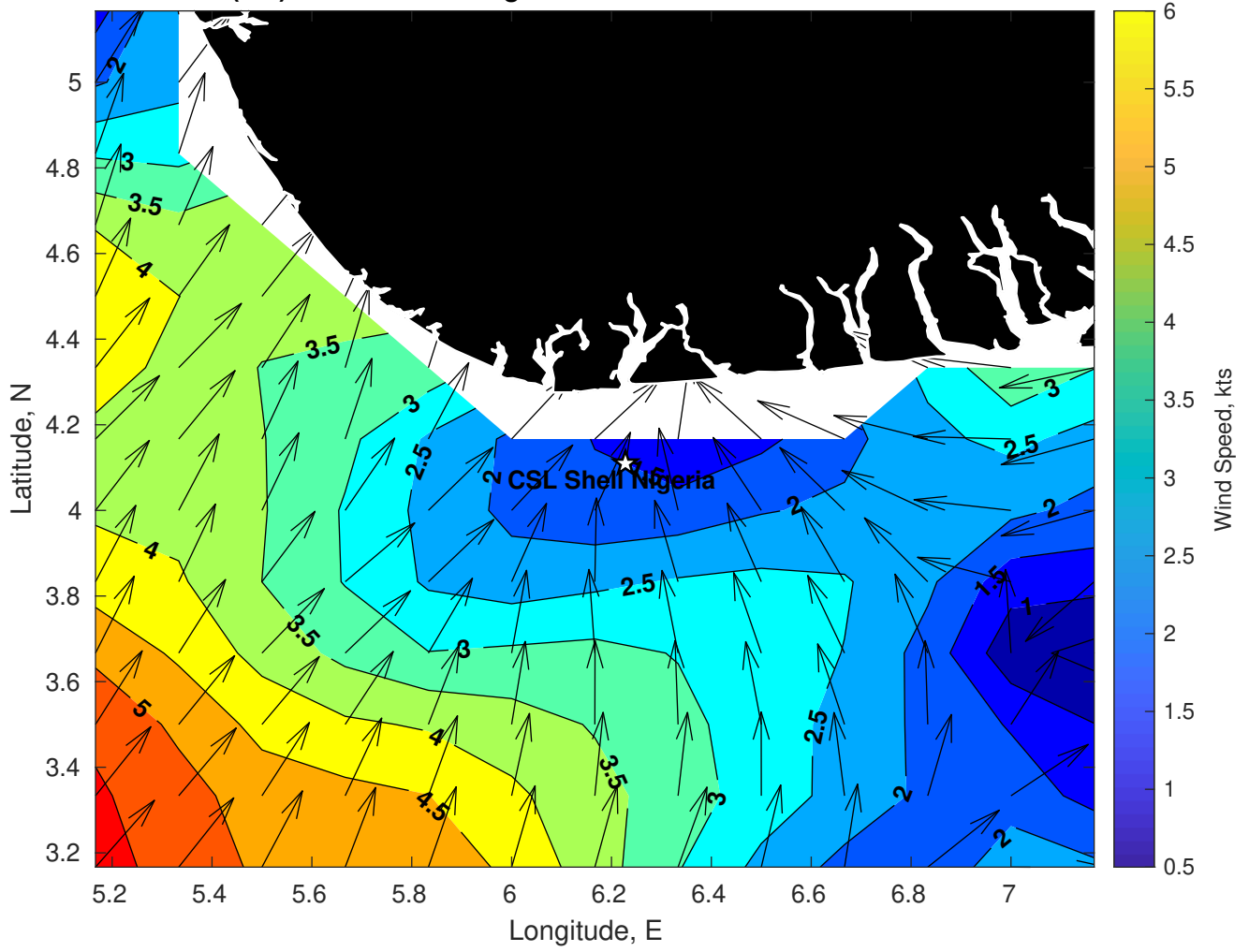
Wave Height (ft) for CSL Shell Nigeria at 27-Feb-2025 09:00:00



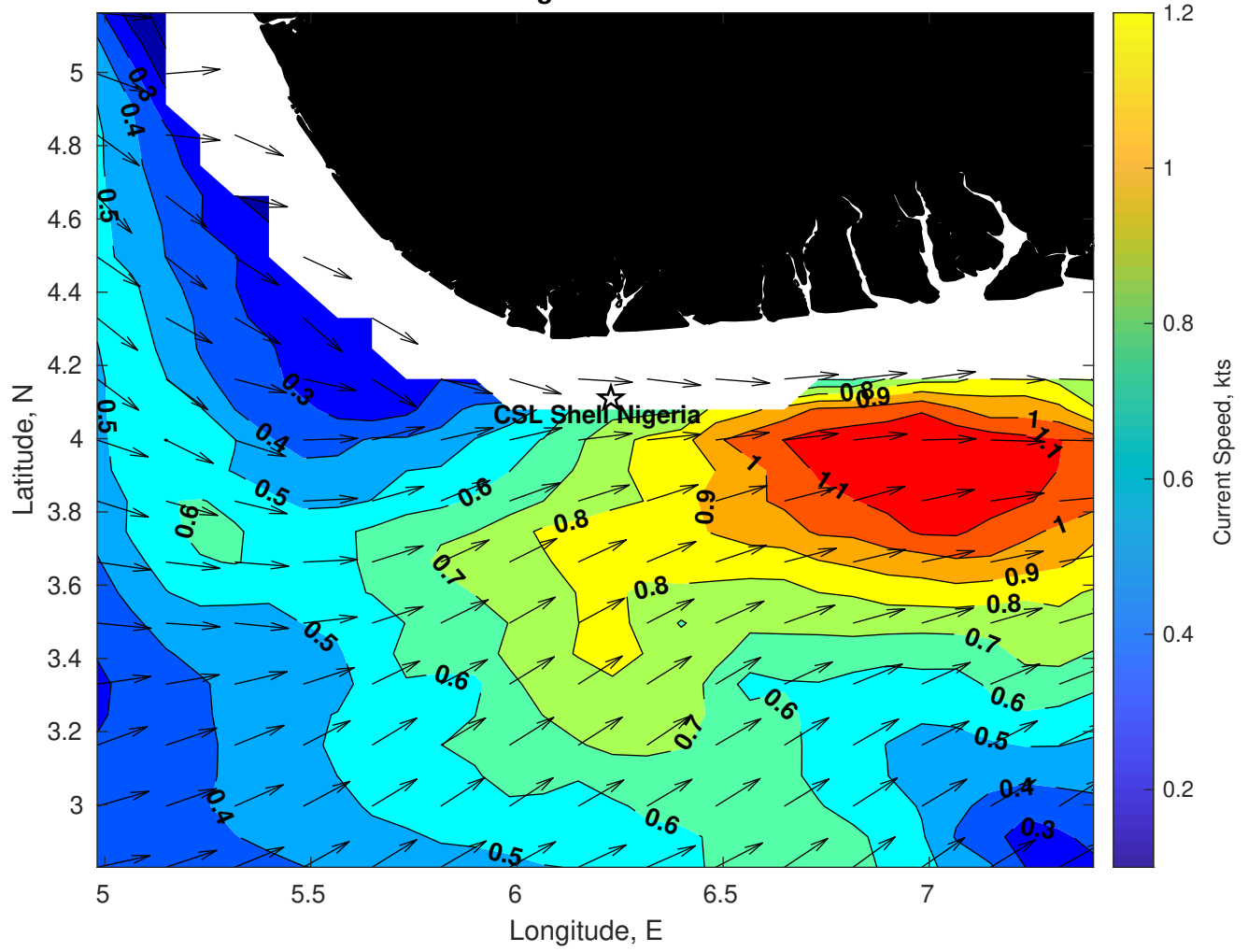
Wave Period (sec) for CSL Shell Nigeria at 27-Feb-2025 09:00:00



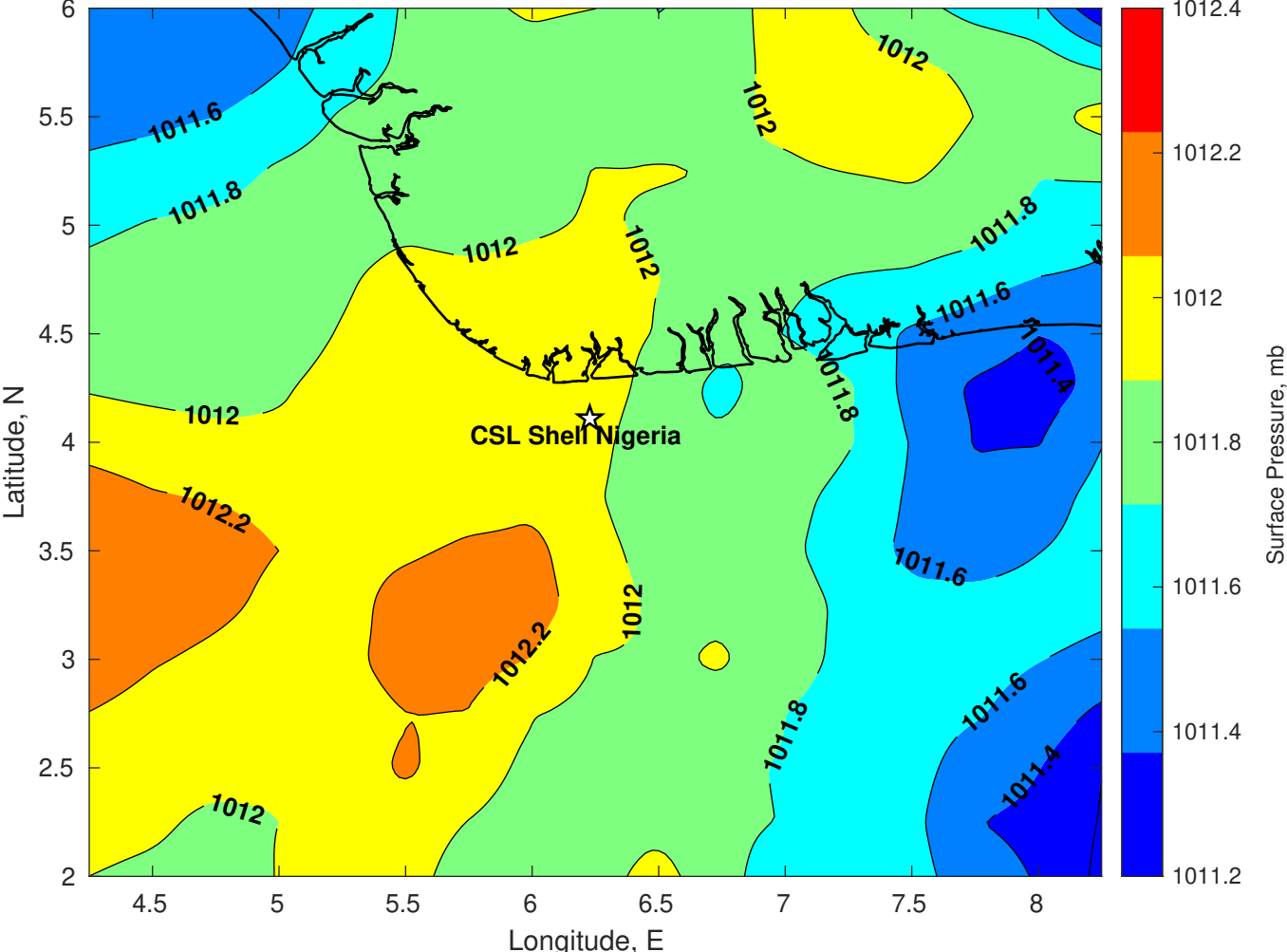
Winds (kts) for CSL Shell Nigeria at 27-Feb-2025 09:00:00



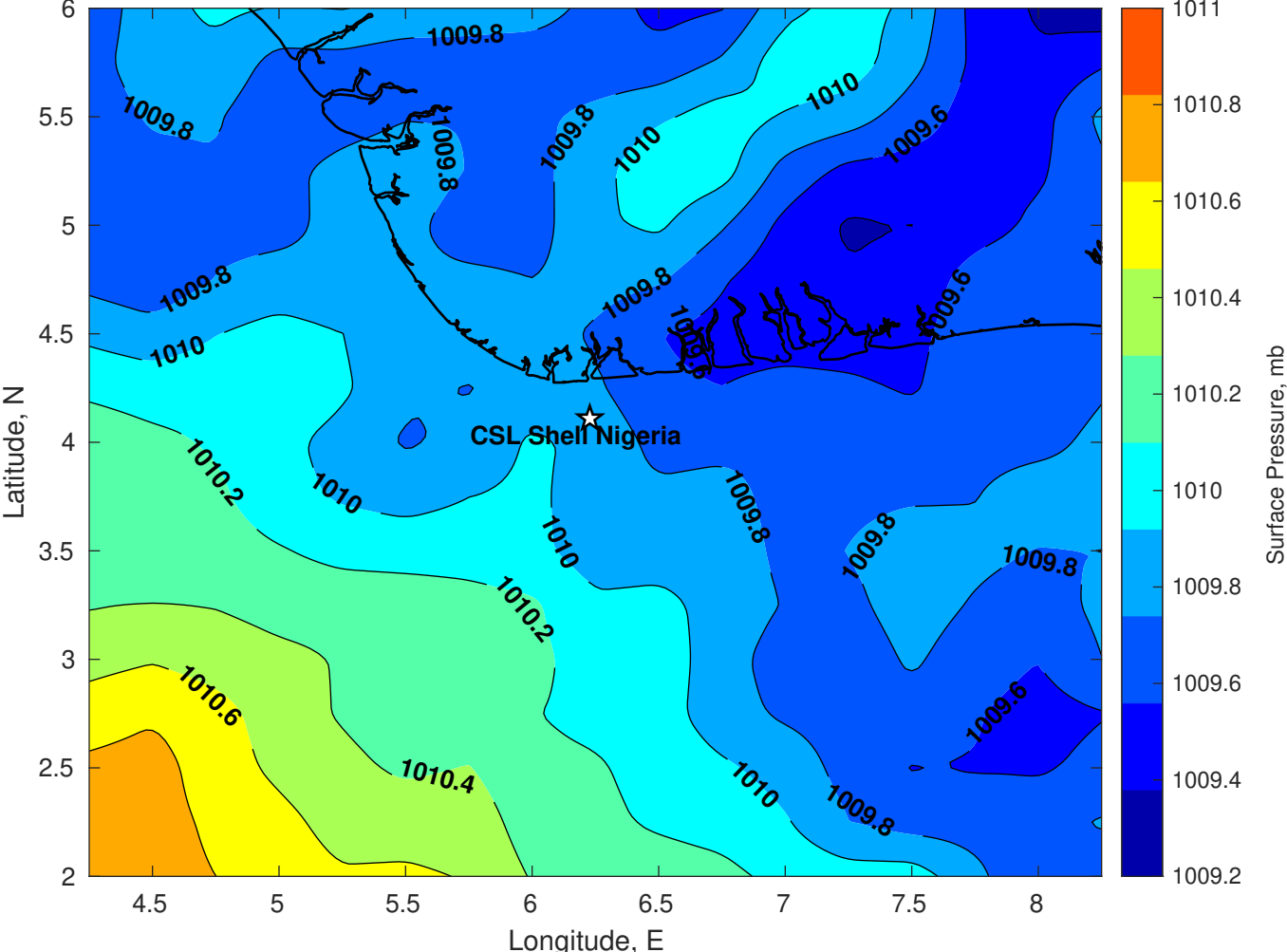
Surface Currents for CSL Shell Nigeria at 26-Feb-2025 00:00:00



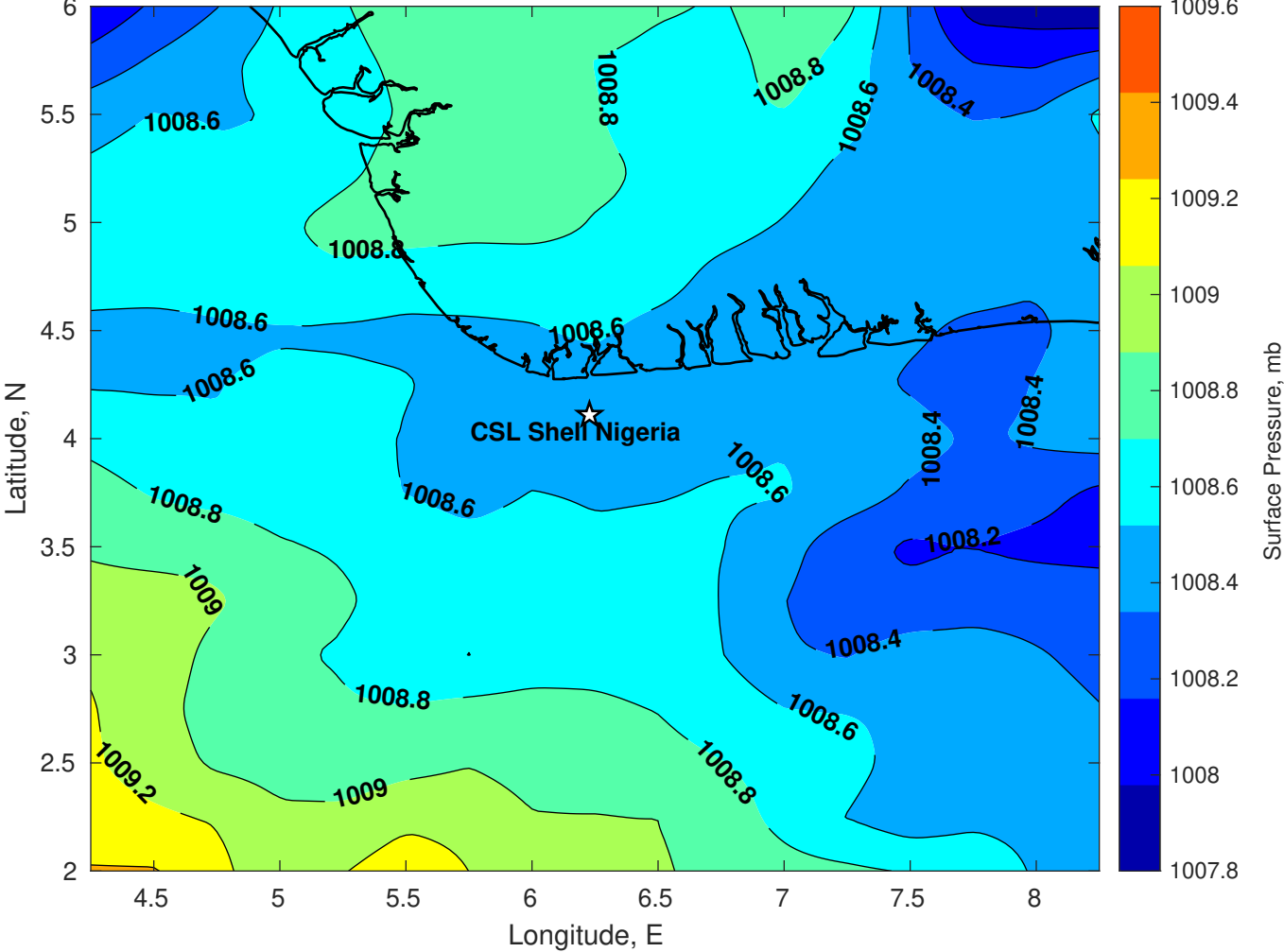
Surface Pressure (mb) for CSL Shell Nigeria at 27-Feb-2025 00:00:00



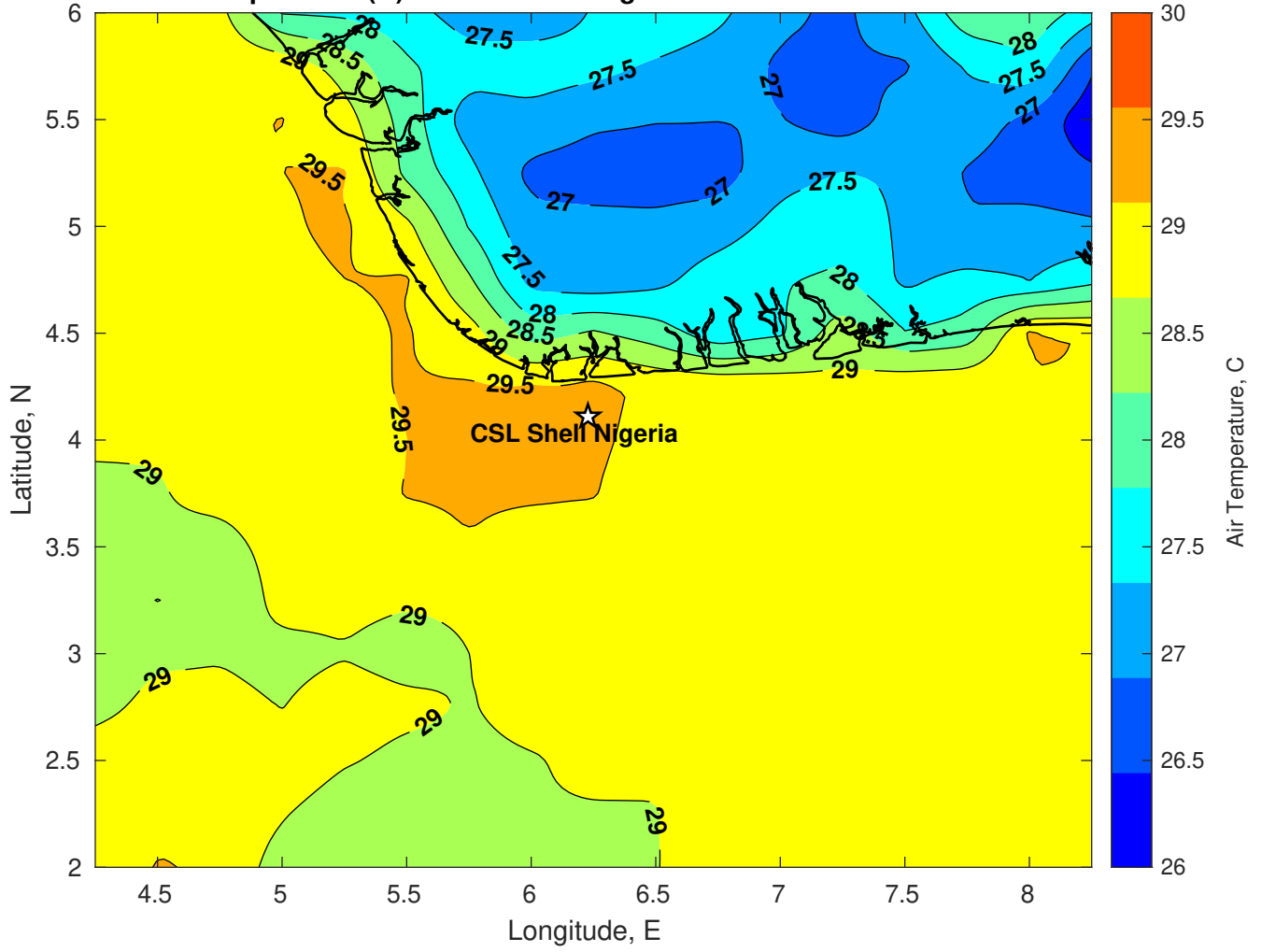
Surface Pressure (mb) for CSL Shell Nigeria at 28-Feb-2025 00:00:00



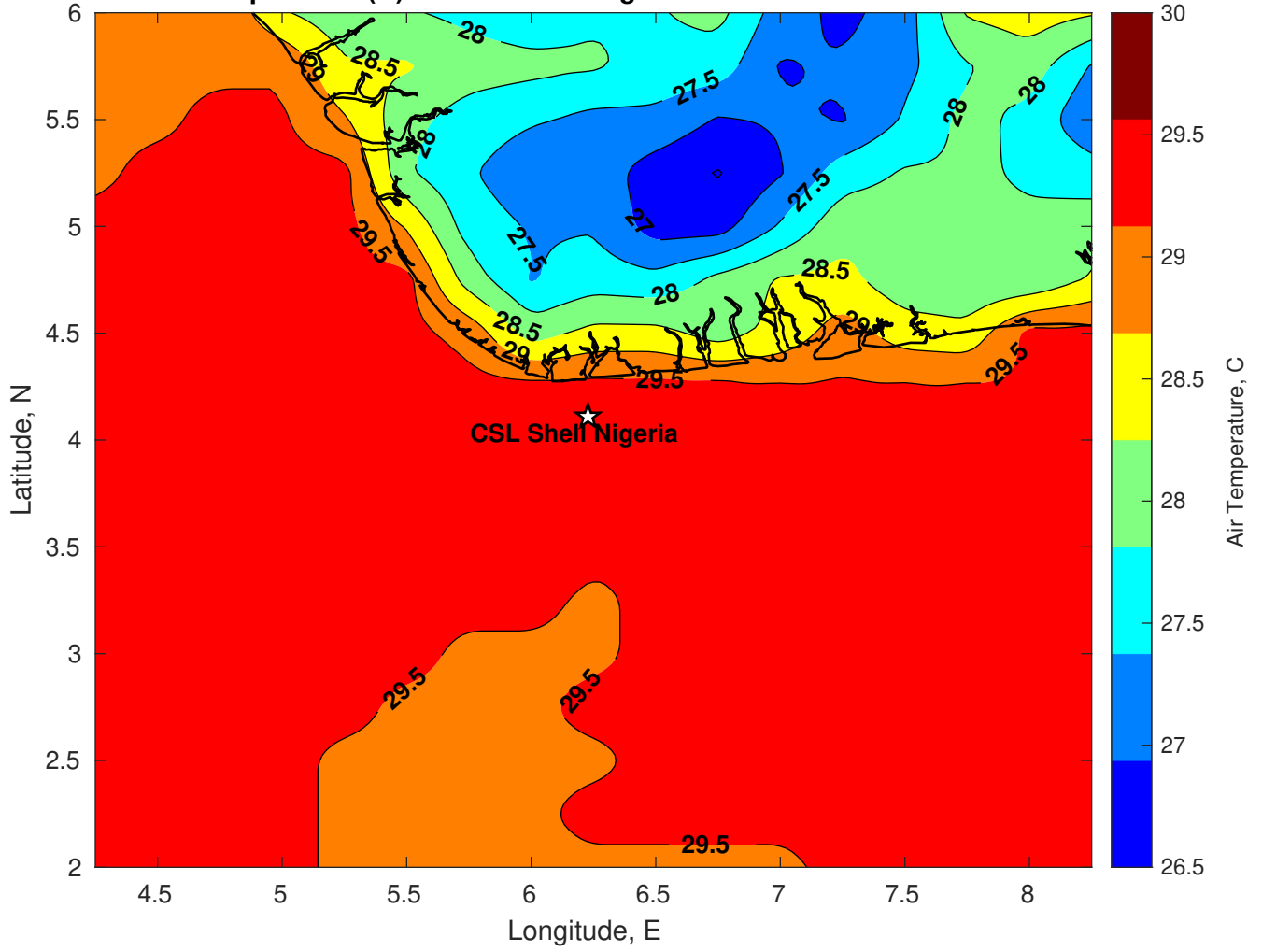
Surface Pressure (mb) for CSL Shell Nigeria at 01-Mar-2025 00:00:00



Air Temperature (C) for CSL Shell Nigeria at 27-Feb-2025



Air Temperature (C) for CSL Shell Nigeria at 27-Feb-2025



Air Temperature (C) for CSL Shell Nigeria at 27-Feb-2025

