

\*\*\*\*\*  
Marine Weather Forecast for Nautilus  
Forecast valid as of 28-Feb-2025 0900 GMT  
\*\*\*\*\*

All times are local.

Today

Winds: N, 15-20 kts.  
Waves: NW, 6-7 feet, 16-17 sec.  
No currents available.

Tonight

Winds: N, 15-20 kts.  
Waves: NW, 5-6 feet, 15-16 sec.  
No currents available.

Saturday

Winds: N, 15-20 kts.  
Waves: NW, 5-6 feet, 15-16 sec.  
No currents available.

Saturday Night

Winds: NE, 15-20 kts.  
Waves: N, 5-6 feet, 14-15 sec.  
No currents available.

Sunday

Winds: N, 20-25 kts.  
Waves: NE, 6-7 feet, 6-7 sec.  
No currents available.

Sunday Night

Winds: N, 15-20 kts.  
Waves: NE, 6-7 feet, 7-8 sec.  
No currents available.

Monday

Winds: N, 15-20 kts.  
Waves: NE, 6-7 feet, 13-14 sec.  
No currents available.

Monday Night

Winds: N, 15-20 kts.  
Waves: NW, 6-7 feet, 12-13 sec.  
No currents available.

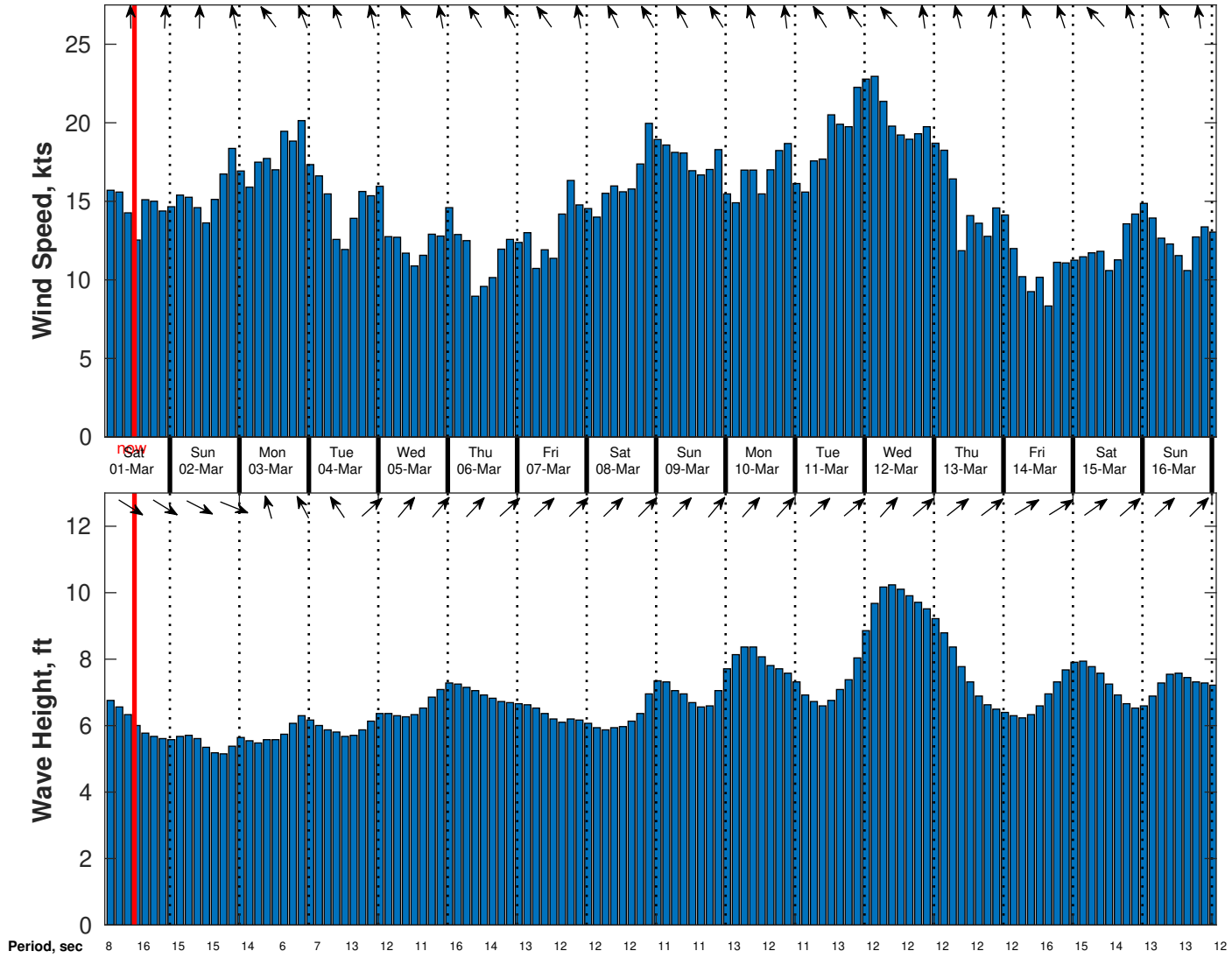
Tuesday

Winds: N, 10-15 kts.  
Waves: NW, 7-8 feet, 18-19 sec.  
No currents available.

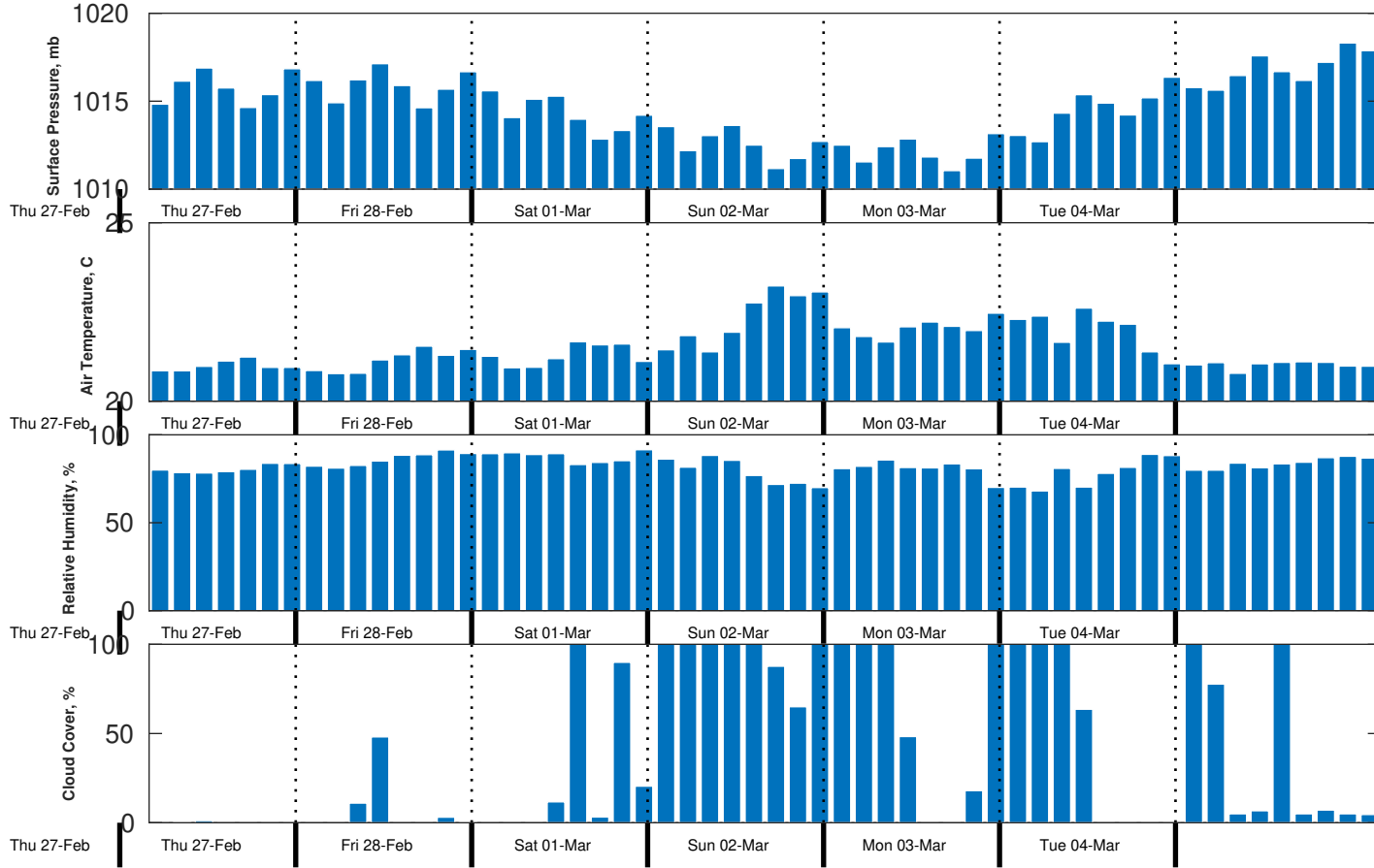
Tuesday Night

Winds: NE, 10-15 kts.  
Waves: NW, 7-8 feet, 16-17 sec.  
No currents available.

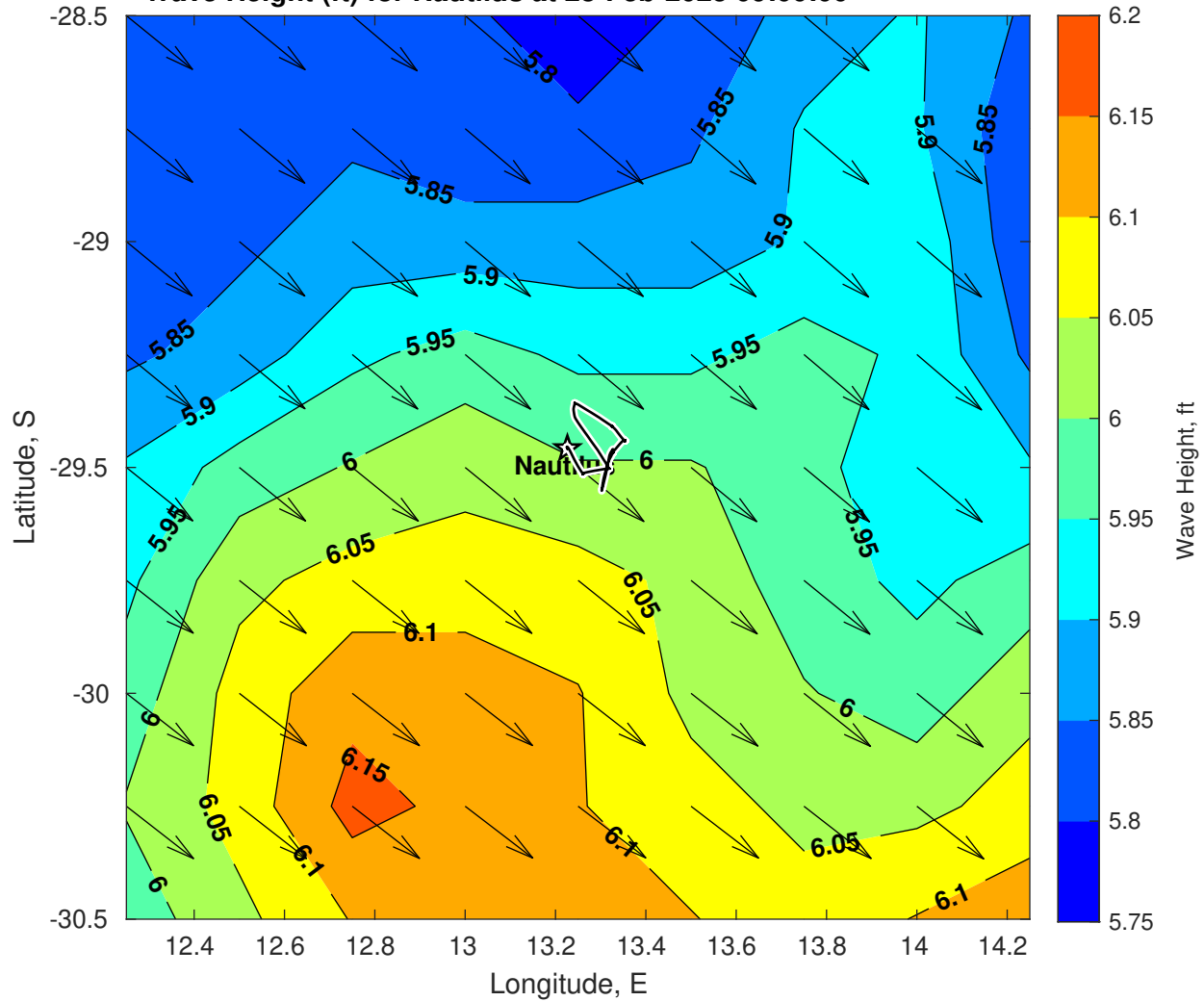
Wind & Wave Forecast for Nautilus from 28-Feb-2025 02:00:00 to 16-Mar-2025 02:00:00



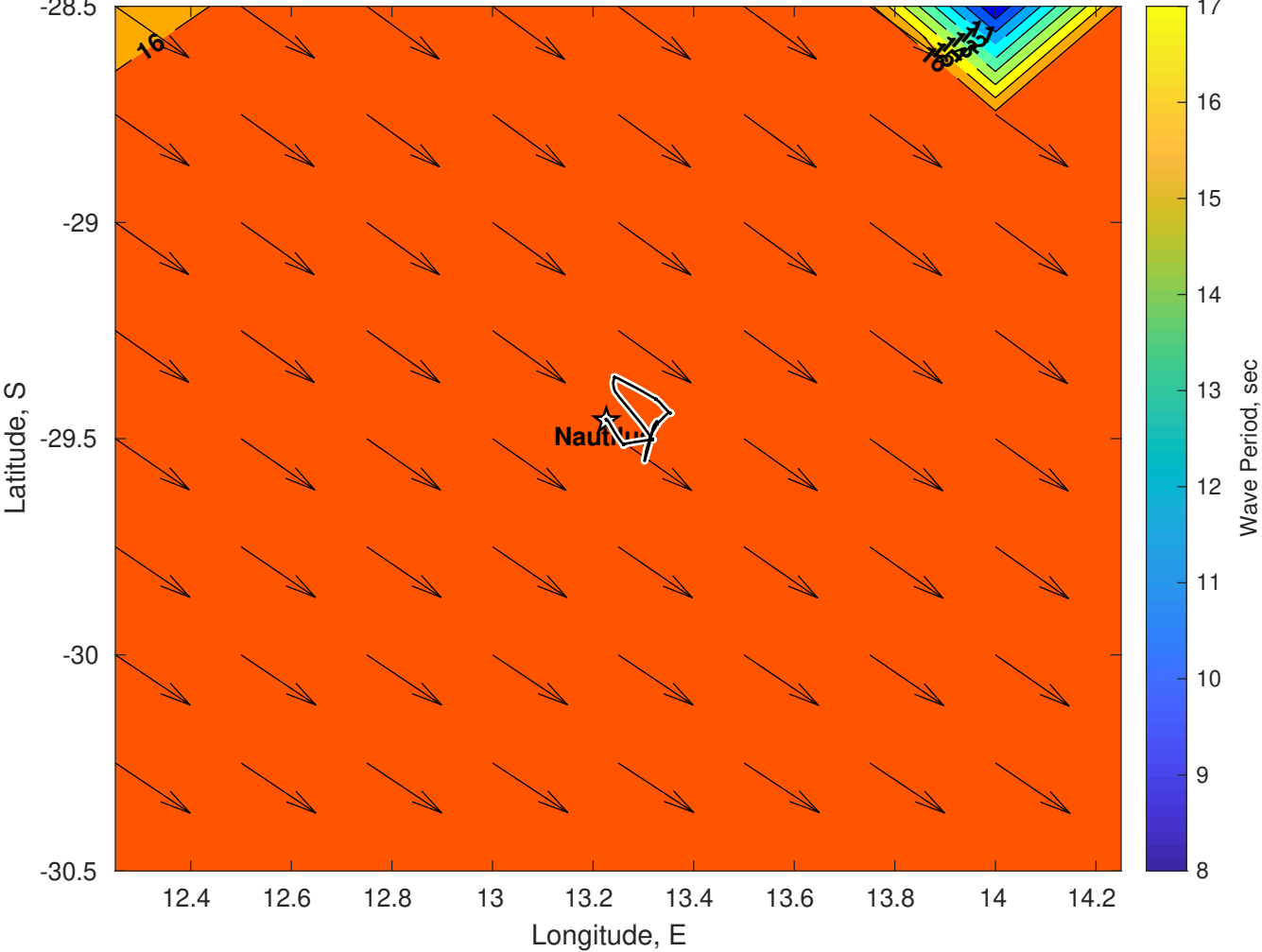
### Met Forecast for Nautilus from 28-Feb-2025 00:00:00 to 07-Mar-2025 00:00:00



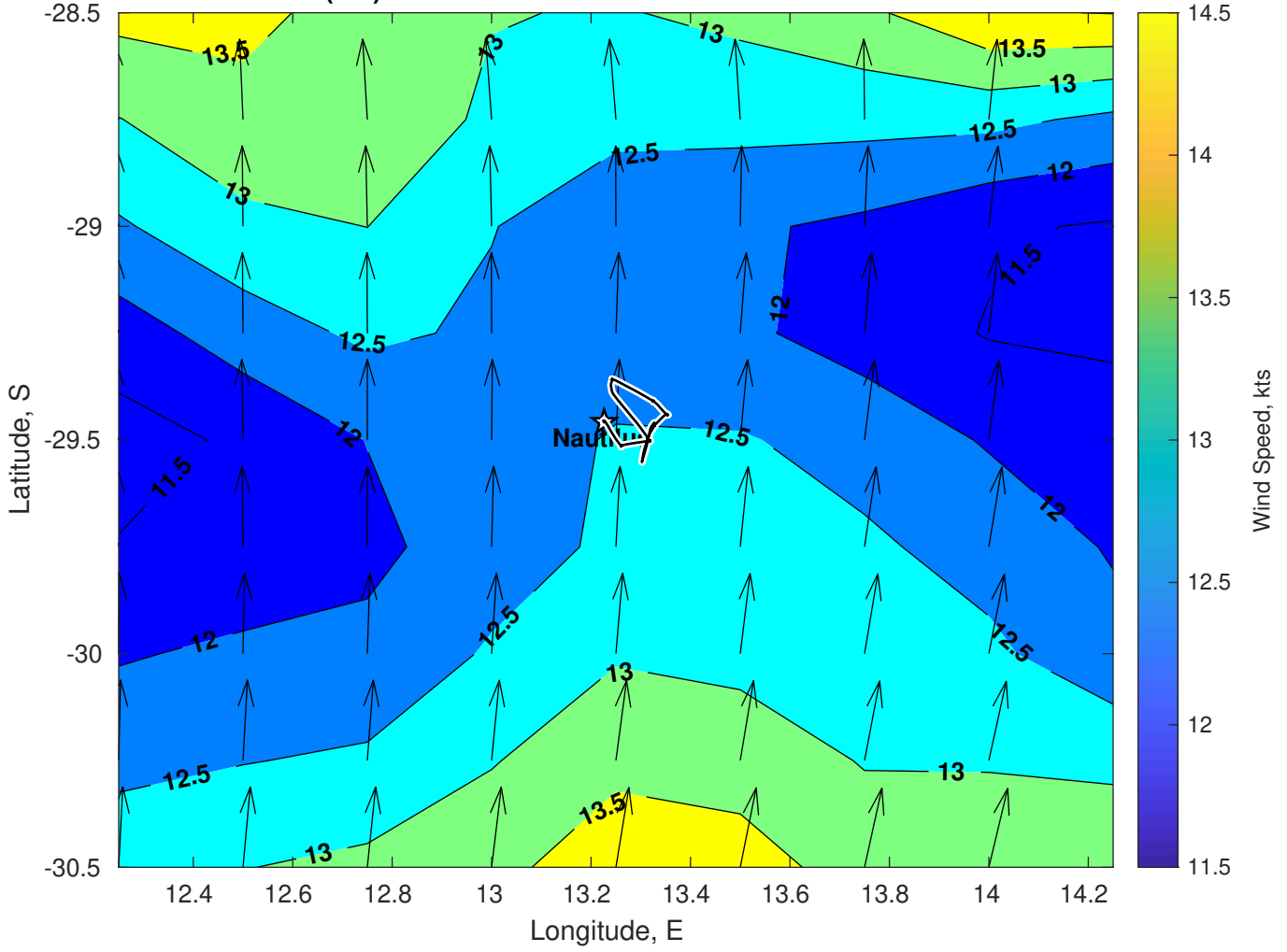
Wave Height (ft) for Nautilus at 28-Feb-2025 09:00:00



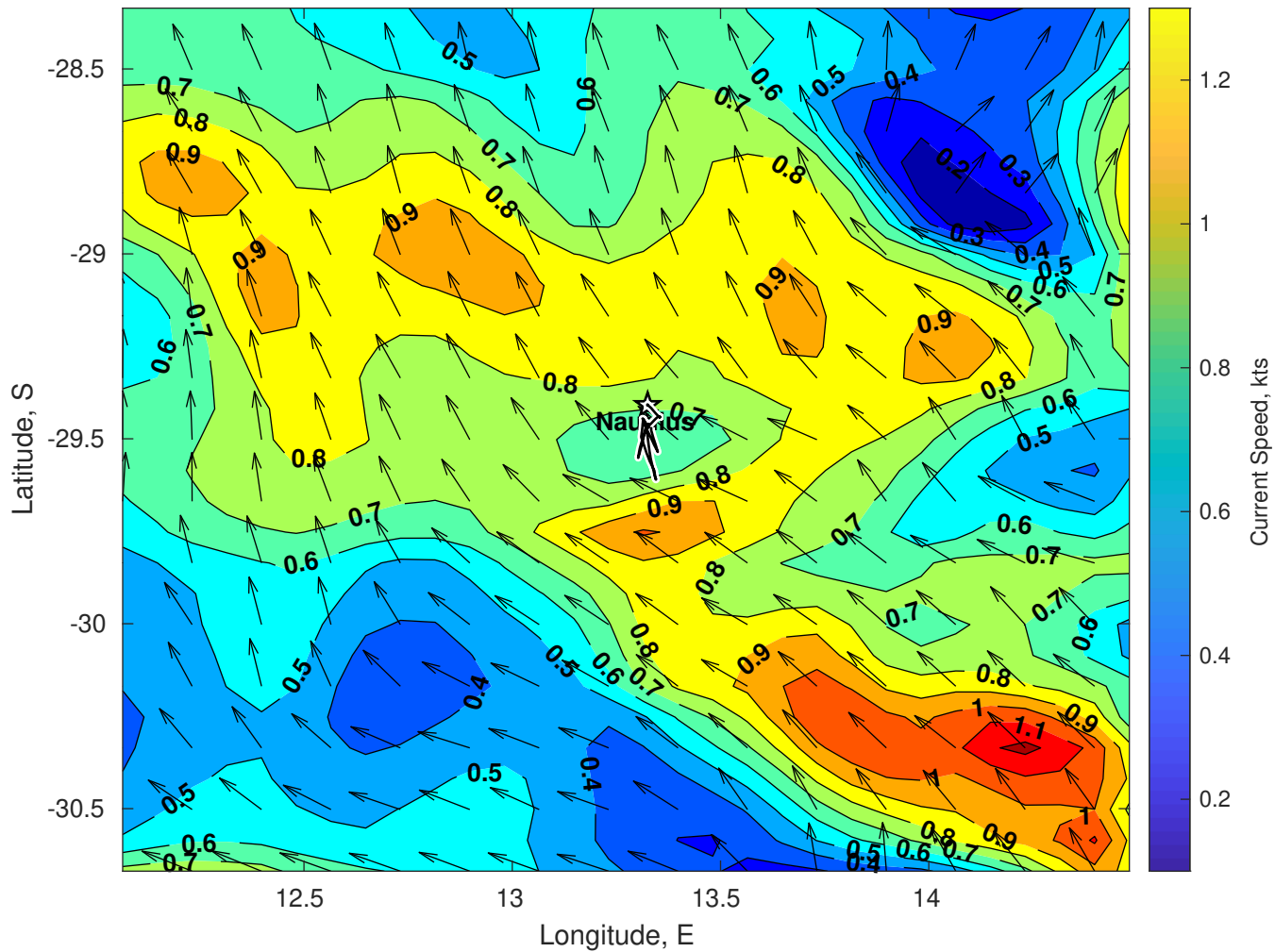
Wave Period (sec) for Nautilus at 28-Feb-2025 09:00:00



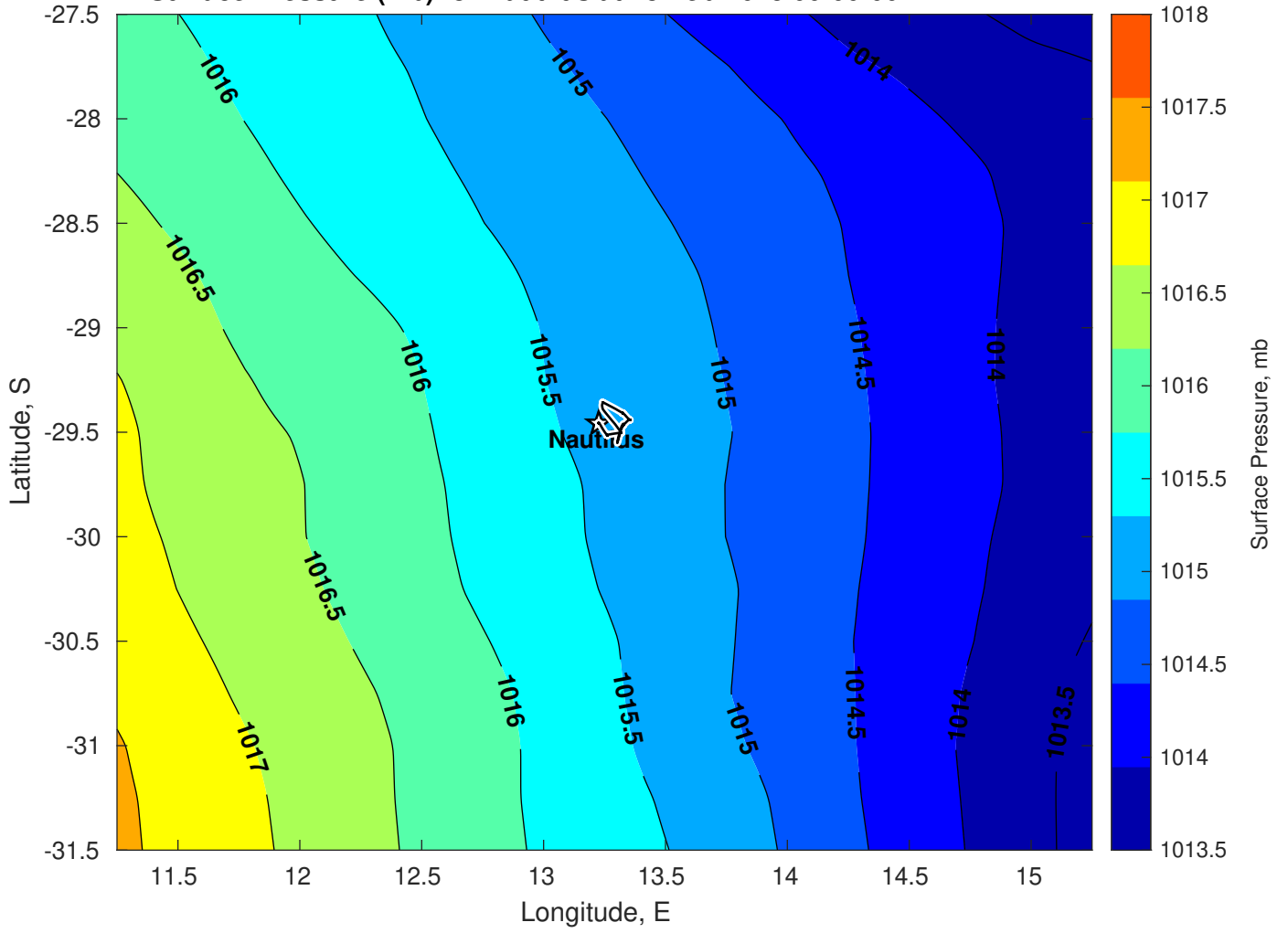
Winds (kts) for Nautilus at 28-Feb-2025 09:00:00



Surface Currents for Nautilus at 27-Feb-2025 00:00:00

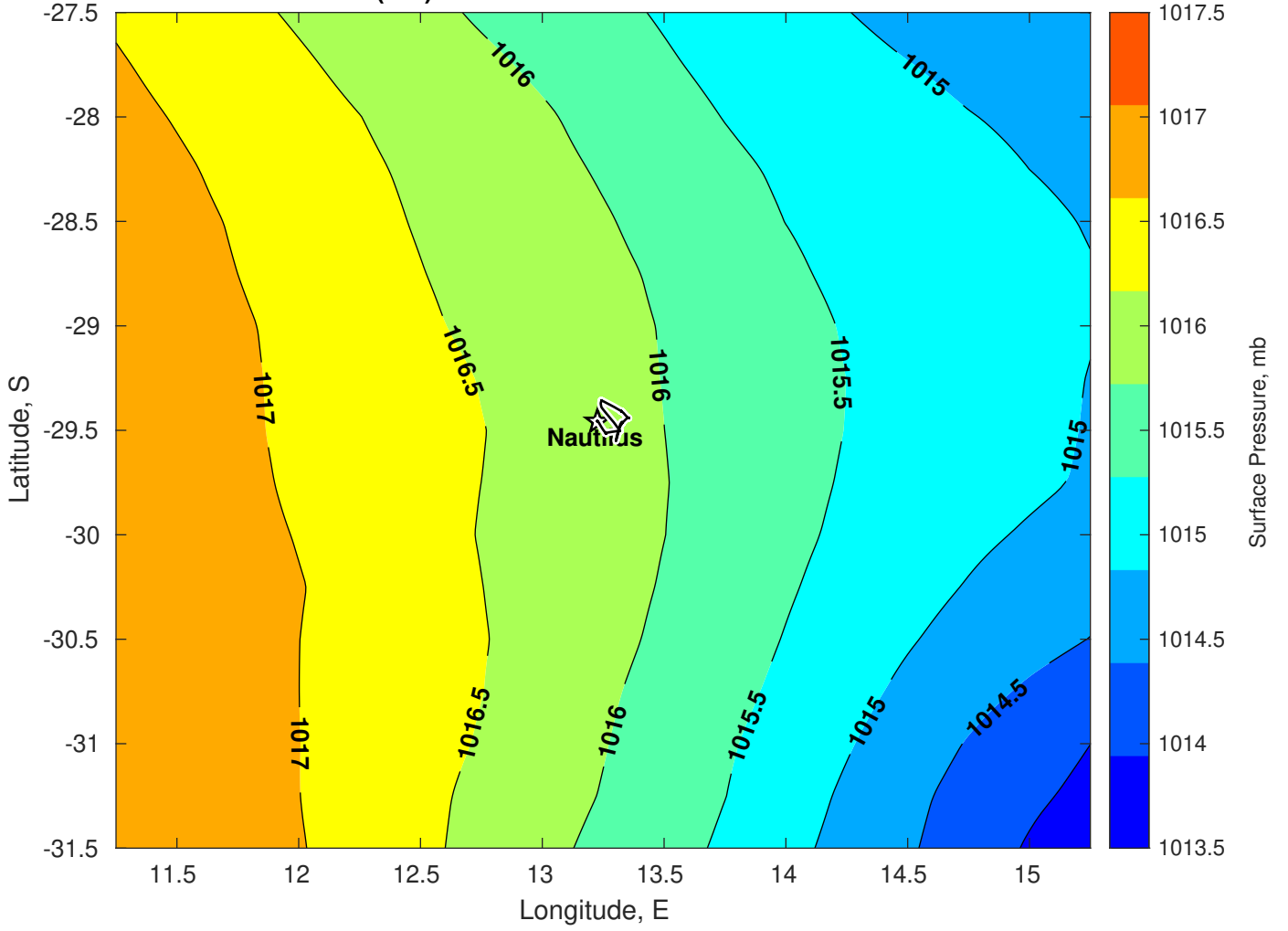


Surface Pressure (mb) for Nautilus at 28-Feb-2025 00:00:00

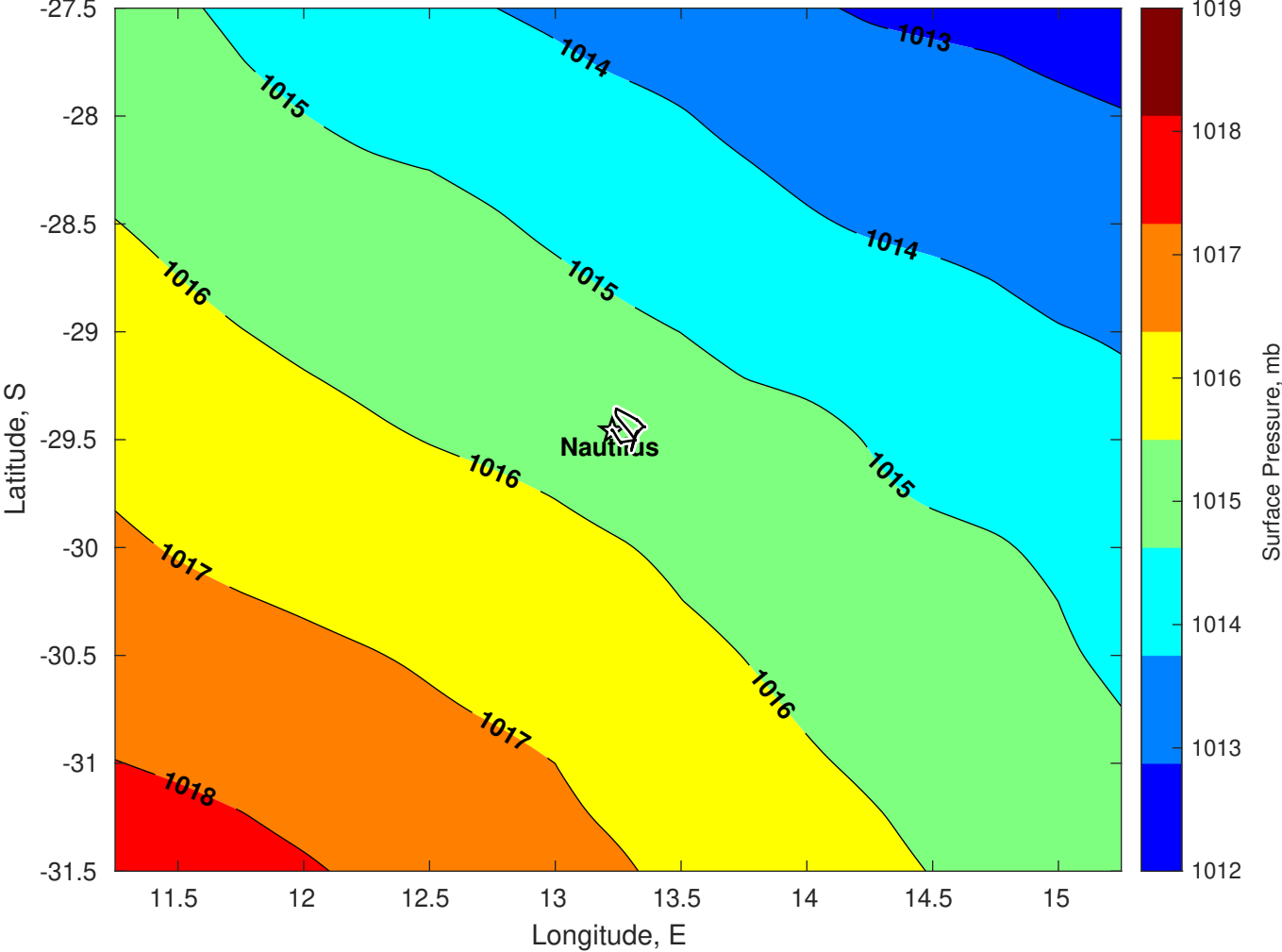




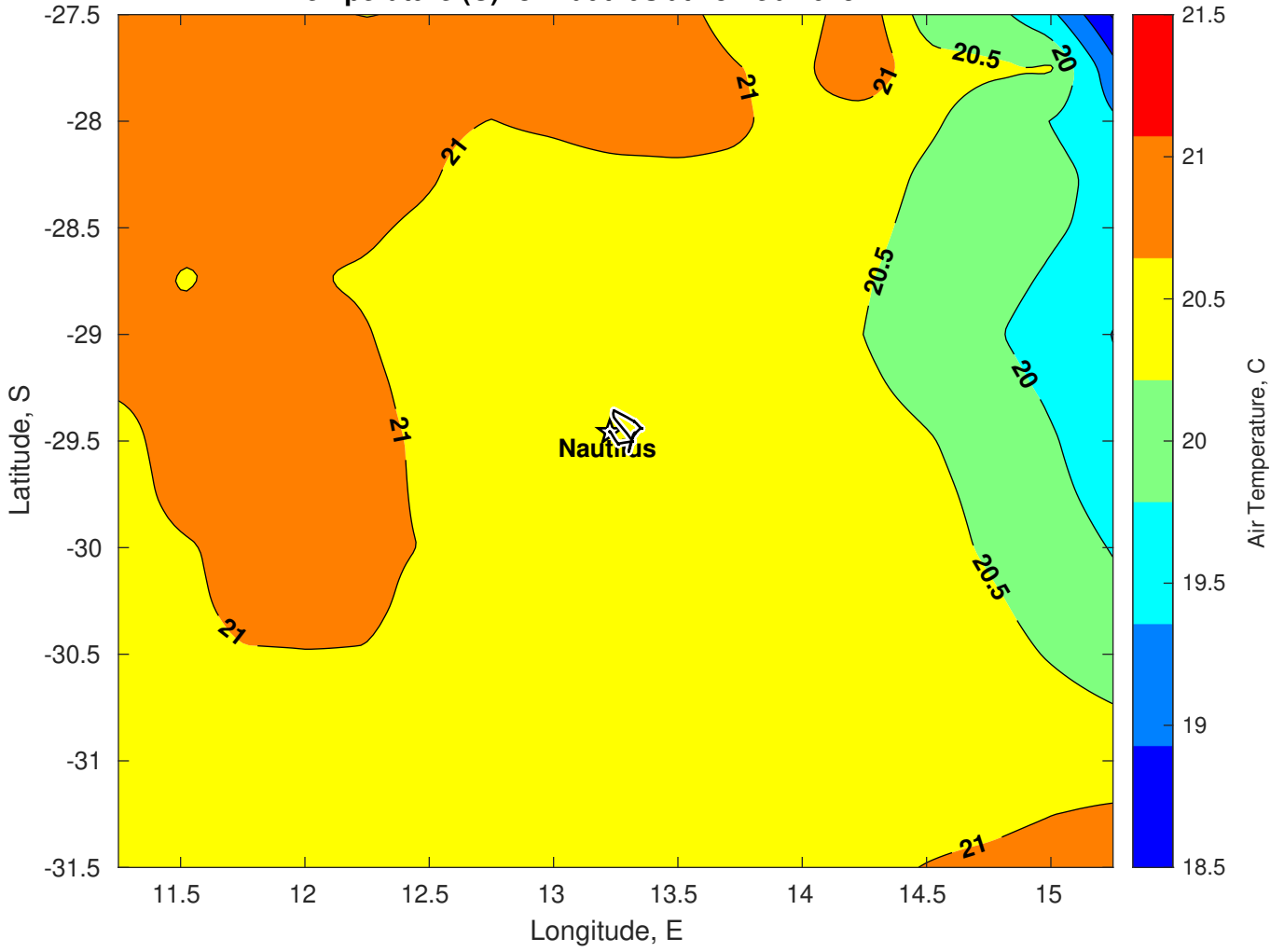
Surface Pressure (mb) for Nautilus at 01-Mar-2025 00:00:00



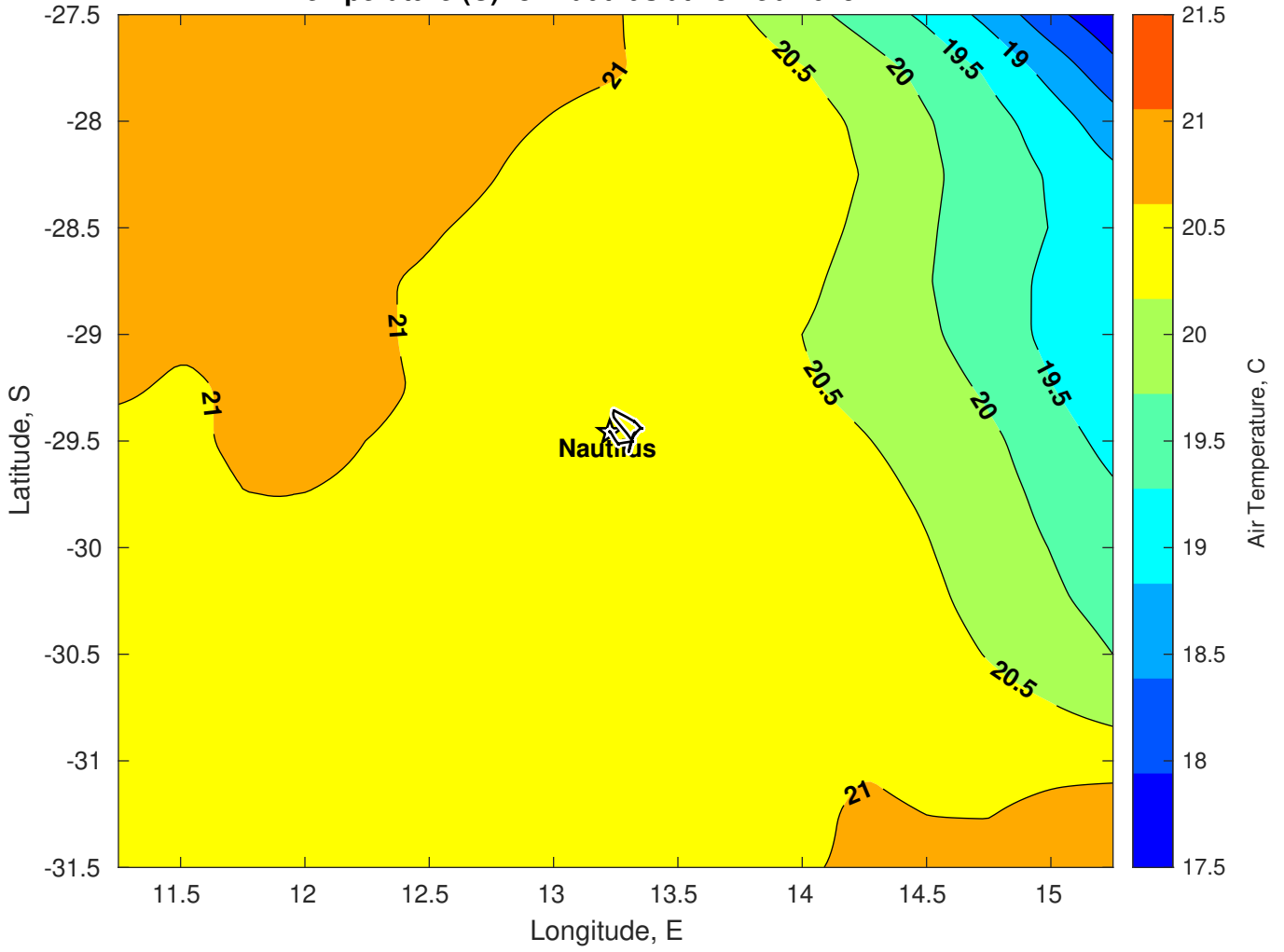
Surface Pressure (mb) for Nautilus at 02-Mar-2025 00:00:00



**Air Temperature (C) for Nautilus at 28-Feb-2025**



**Air Temperature (C) for Nautilus at 28-Feb-2025**



**Air Temperature (C) for Nautilus at 28-Feb-2025**

