

\*\*\*\*\*

Marine Weather Forecast for Tampnet P2378 South Texas Cable Route Geophysical  
Forecast valid as of 28-Feb-2025 0900 GMT

\*\*\*\*\*

All times are local.

Today

Winds: NE, 10-15 kts.  
Waves: E, 2-3 feet, 5-6 sec.  
No currents available.

Tonight

Winds: E, 5-10 kts.  
Waves: E, 2-3 feet, 5-6 sec.  
No currents available.

Saturday

Winds: E, 5-10 kts.  
Waves: E, 1-2 feet, 5-6 sec.  
No currents available.

Saturday Night

Winds: E, 5-10 kts.  
Waves: E, 1-2 feet, 4-5 sec.  
No currents available.

Sunday

Winds: NE, 10-15 kts.  
Waves: E, 2-3 feet, 4-5 sec.  
No currents available.

Sunday Night

Winds: NE, 15-20 kts.  
Waves: NE, 3-4 feet, 4-5 sec.  
No currents available.

Monday

Winds: NE, 15-20 kts.  
Waves: NE, 3-4 feet, 5-6 sec.  
No currents available.

Monday Night

Winds: NE, 20-25 kts.  
Waves: NE, 5-6 feet, 5-6 sec.  
No currents available.

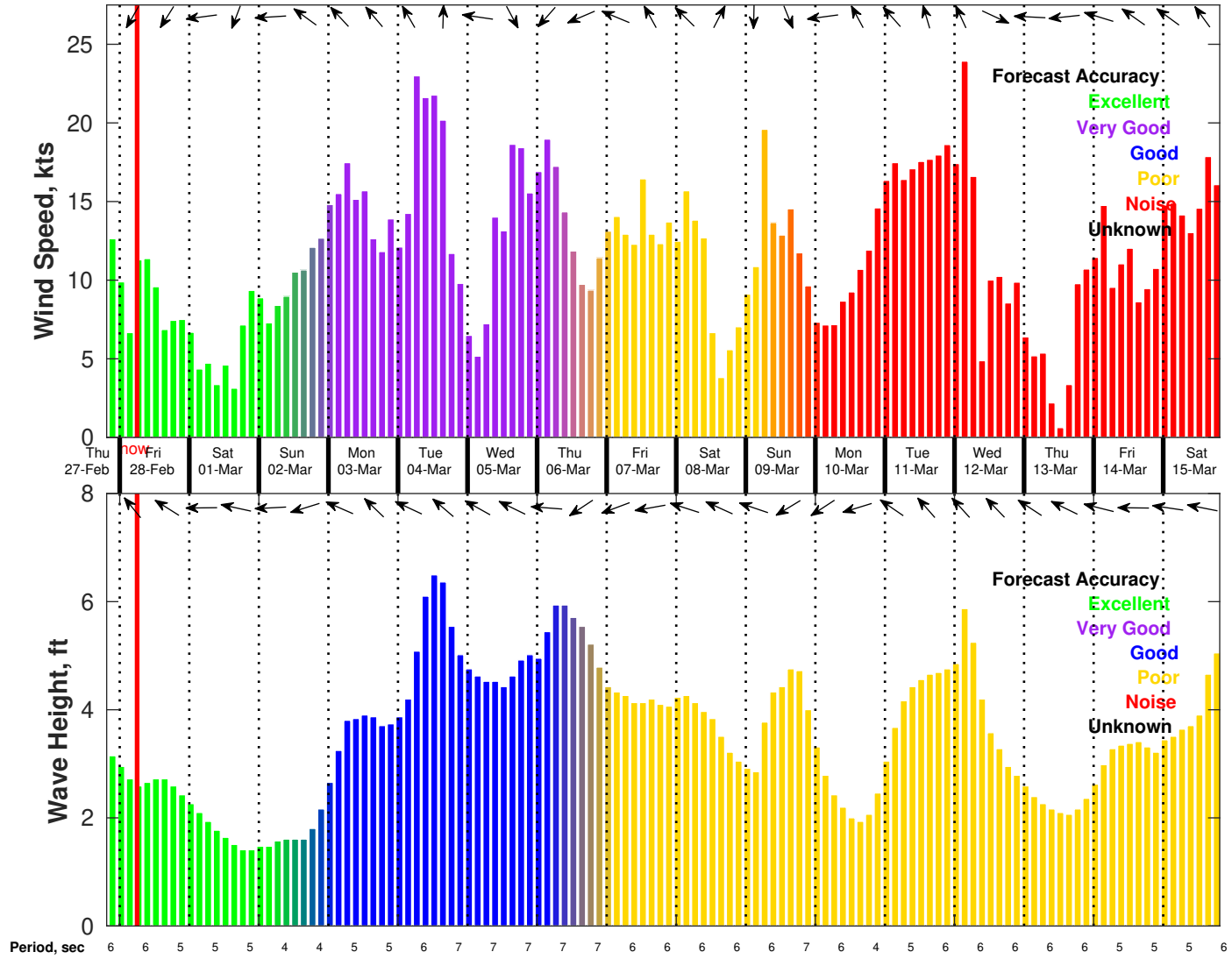
Tuesday

Winds: NE, 20-25 kts.  
Waves: NE, 6-7 feet, 6-7 sec.  
No currents available.

Tuesday Night

Winds: E, 5-10 kts.  
Waves: NE, 4-5 feet, 7-8 sec.  
No currents available.

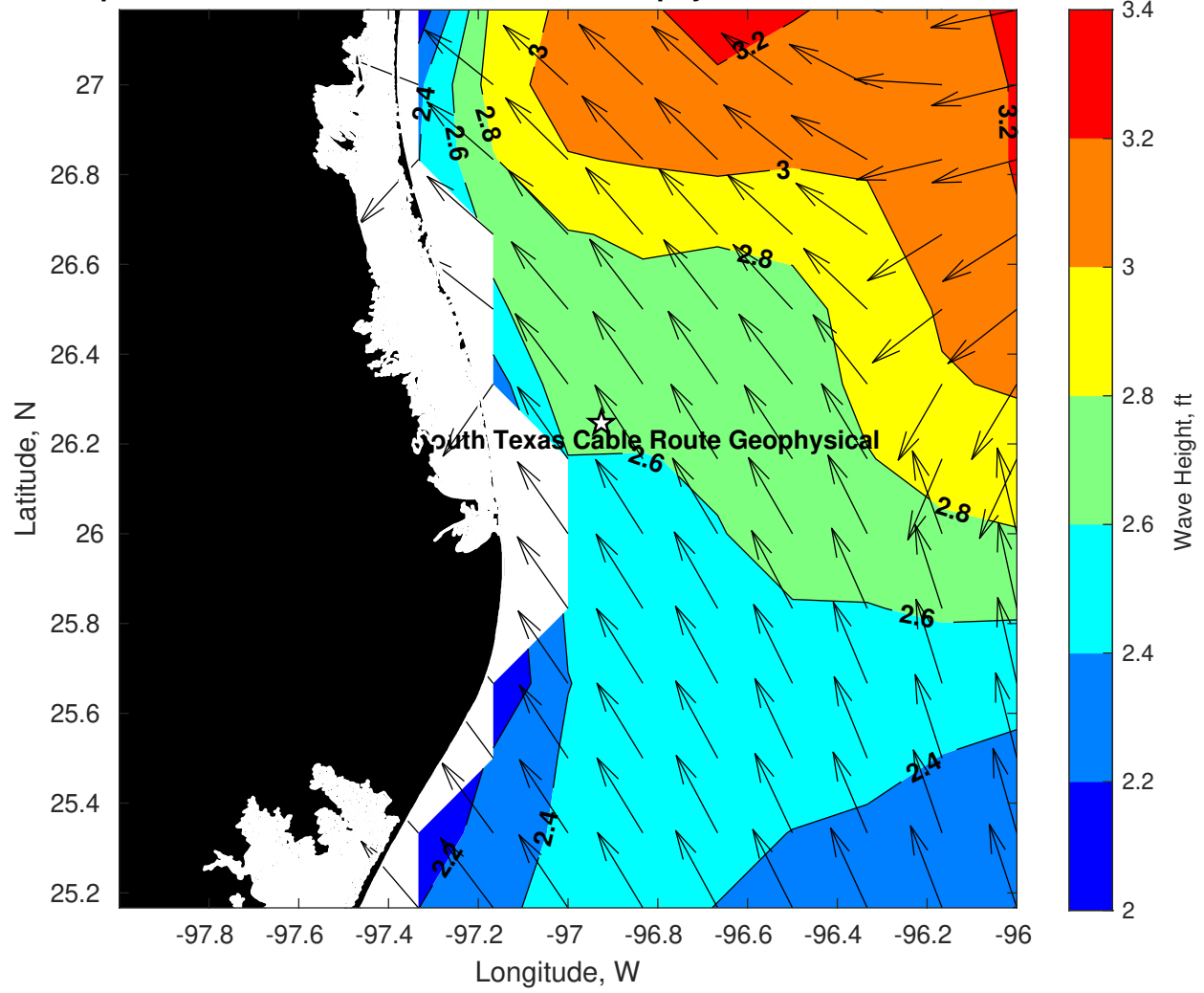
Wind & Wave Forecast for Tampnet P2378 South Texas Cable Route Geophysical from 27-Feb-2025 20:00:00 to 15-Mar-2025 20:00:00



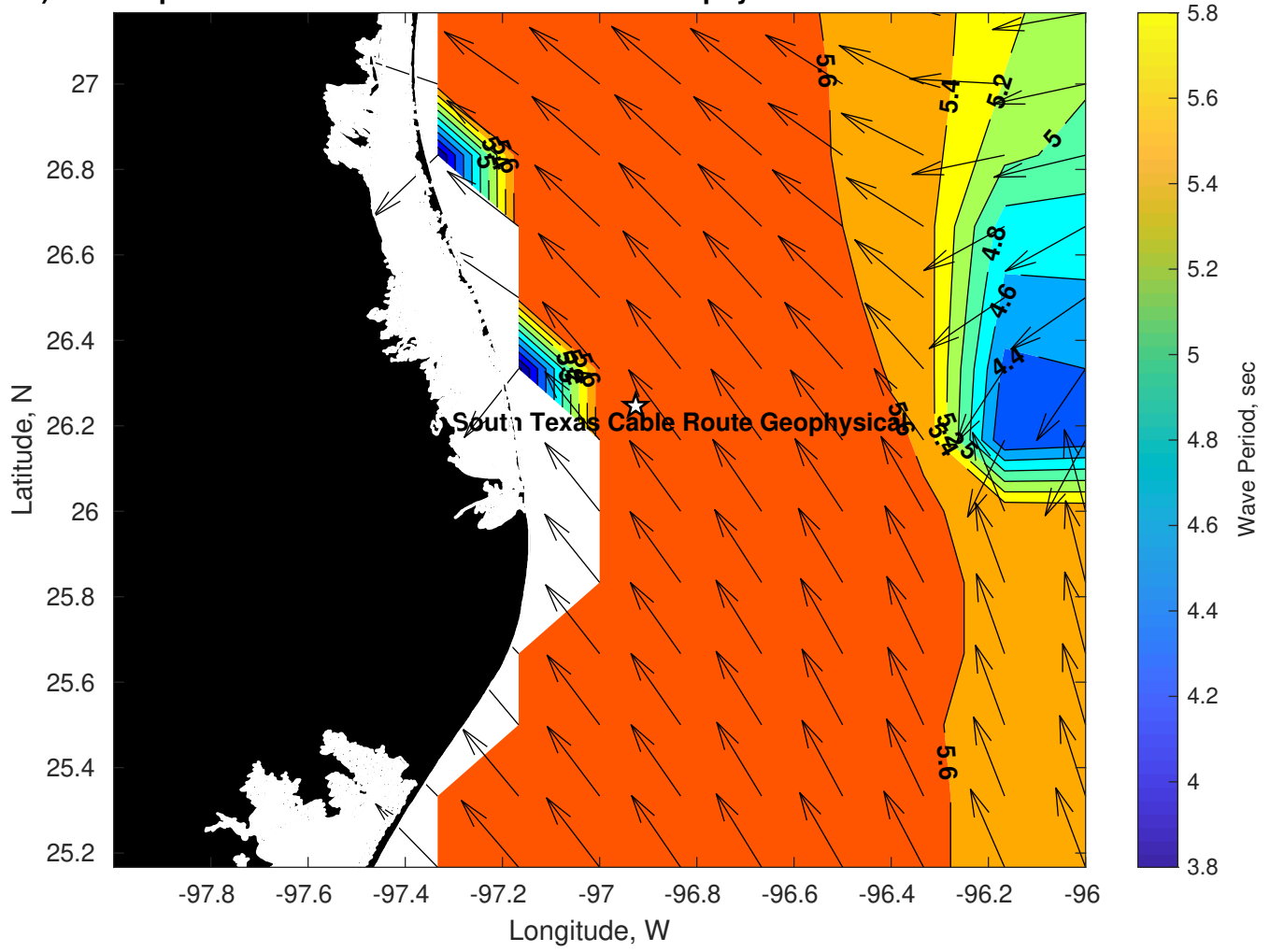
**Met Forecast for Tampnet P2378 South Texas Cable Route Geophysical from 28-Feb-2025 00:00:00 to 07-Mar-2025 00:00:00**



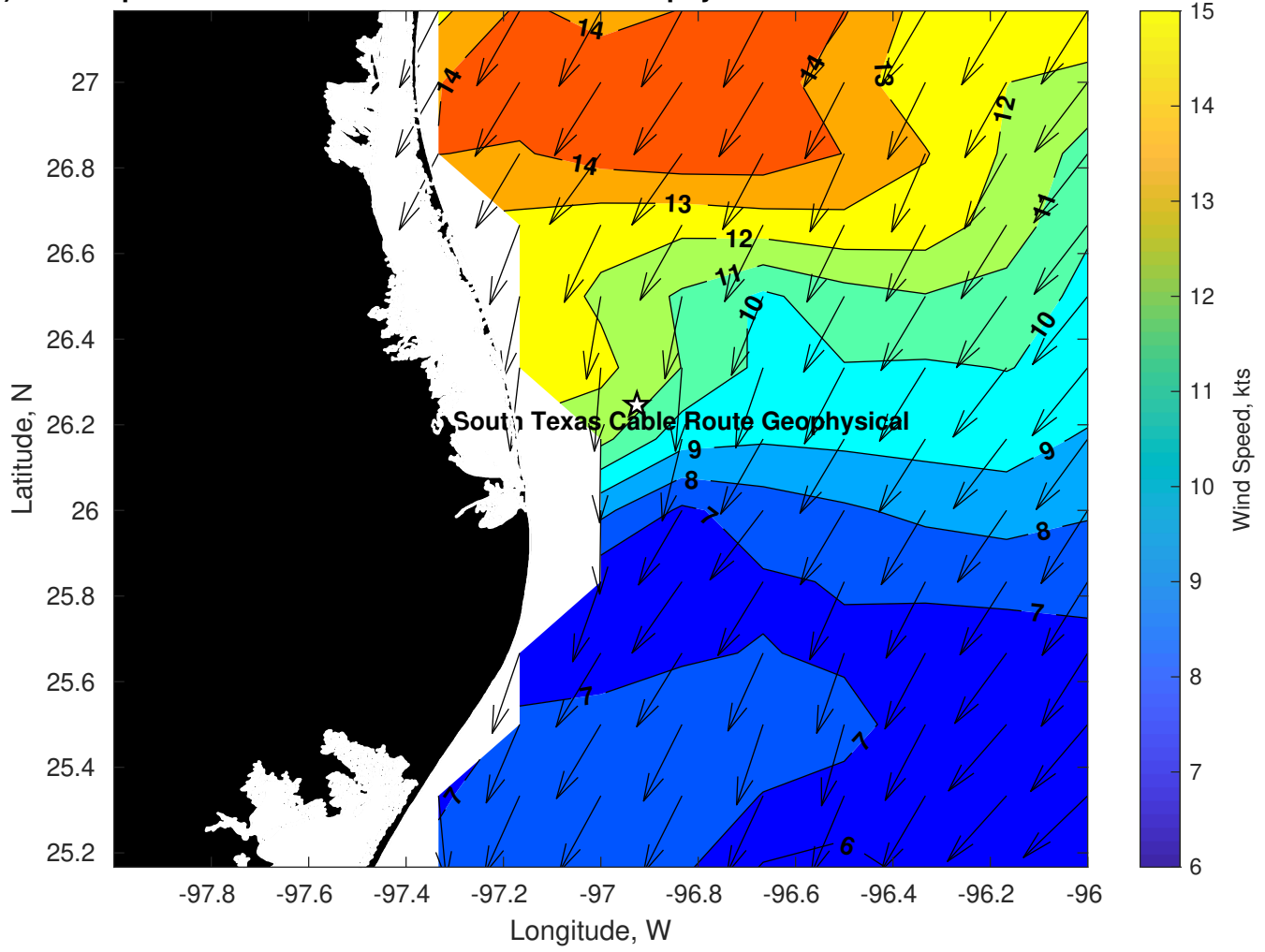
Wave Height (ft) for Tampnet P2378 South Texas Cable Route Geophysical at 28-Feb-2025 09:00:00



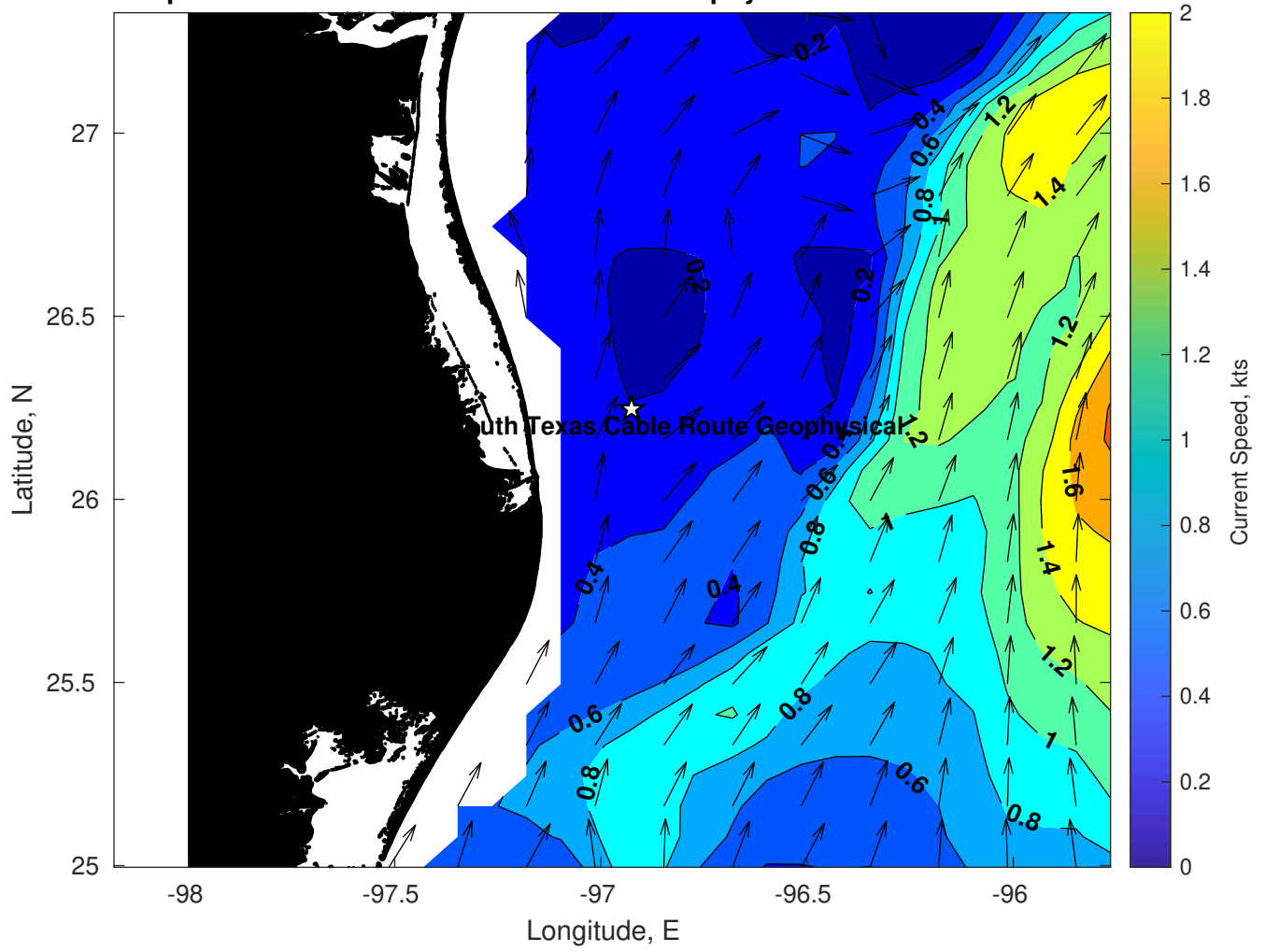
Period (sec) for Tampnet P2378 South Texas Cable Route Geophysical at 28-Feb-2025 09:00:00



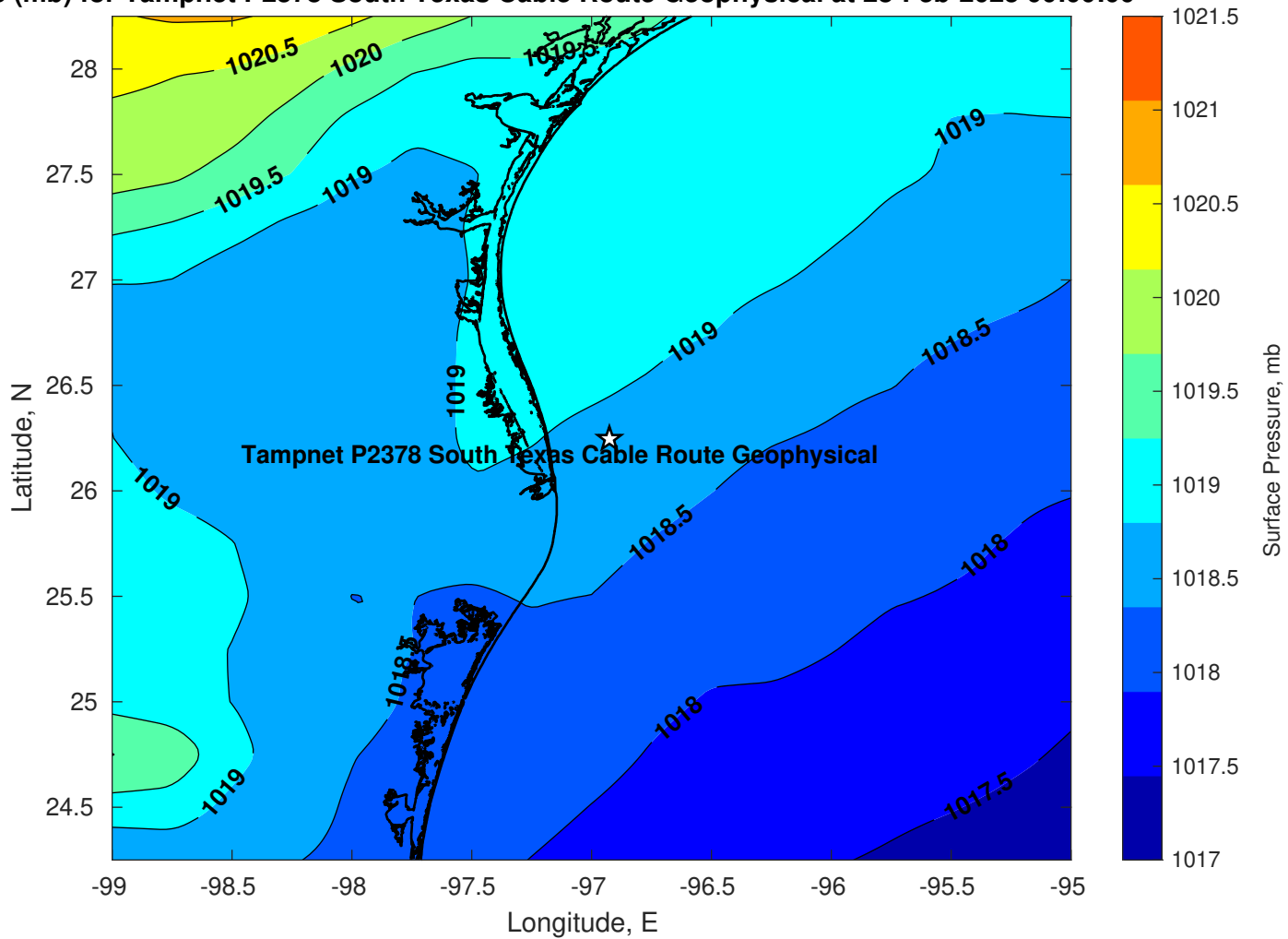
Winds (kts) for Tampnet P2378 South Texas Cable Route Geophysical at 28-Feb-2025 09:00:00



Surface Currents for Tampnet P2378 South Texas Cable Route Geophysical at 27-Feb-2025 00:00:00

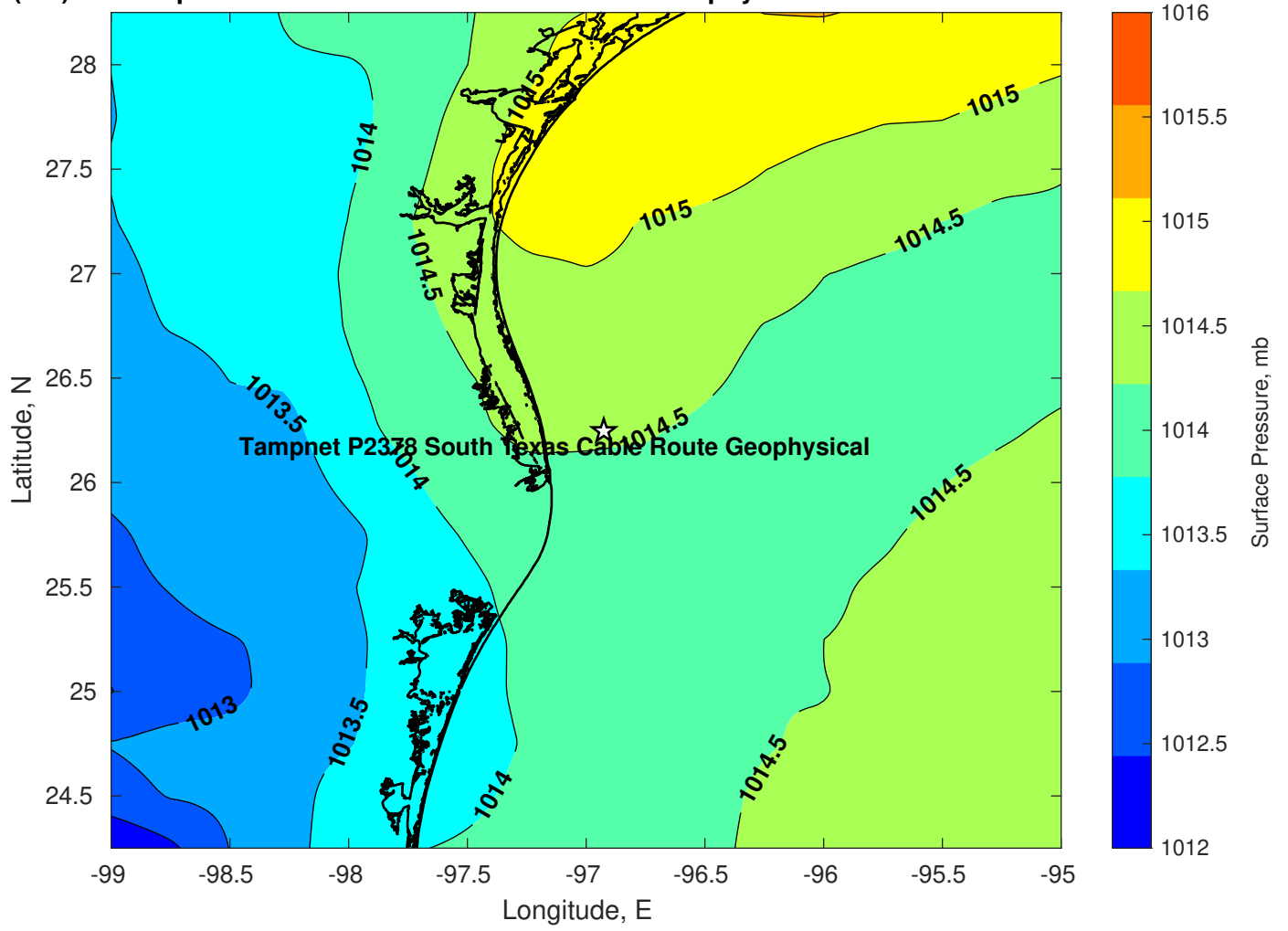


Pressure (mb) for Tampnet P2378 South Texas Cable Route Geophysical at 28-Feb-2025 00:00:00

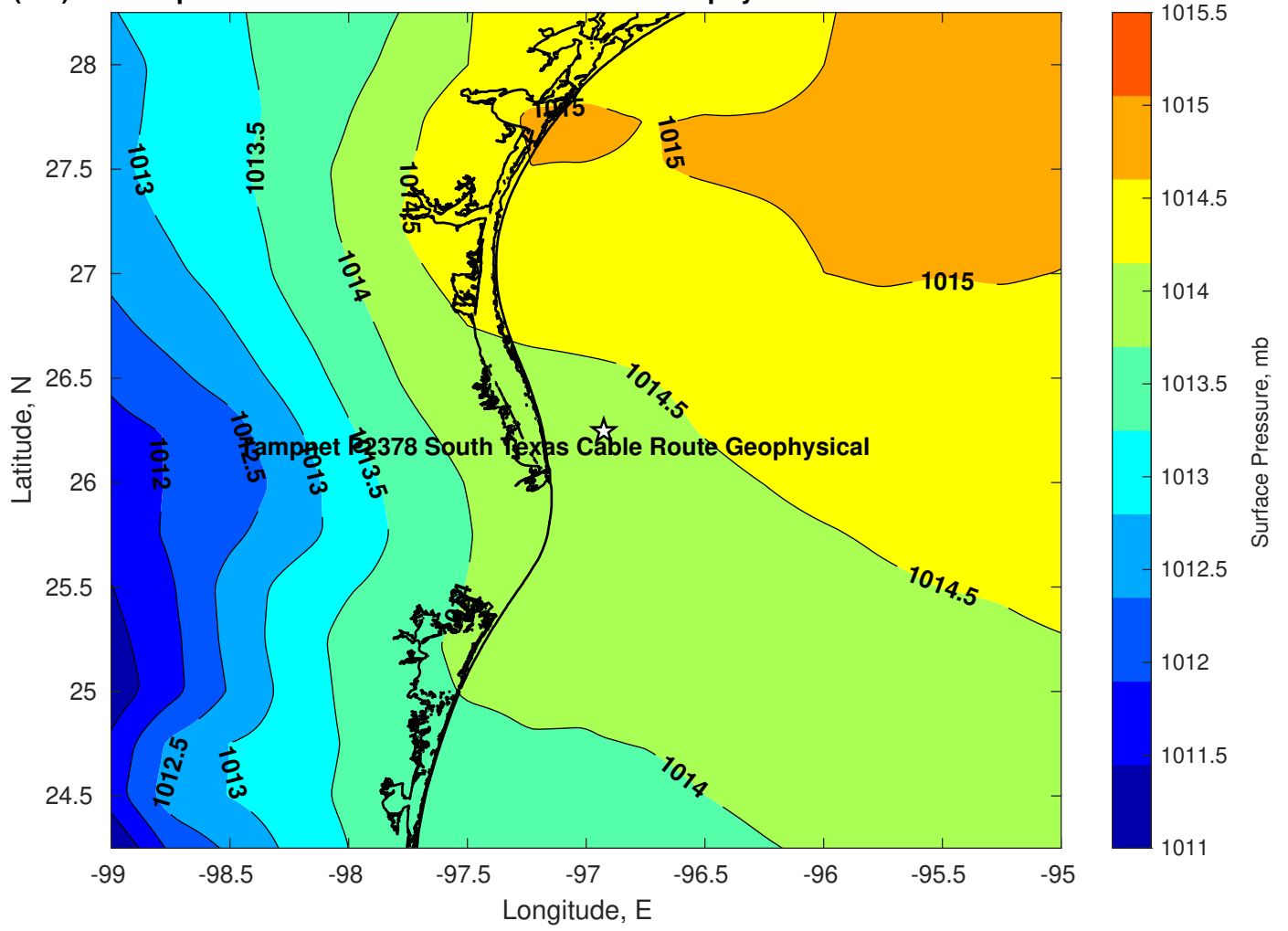




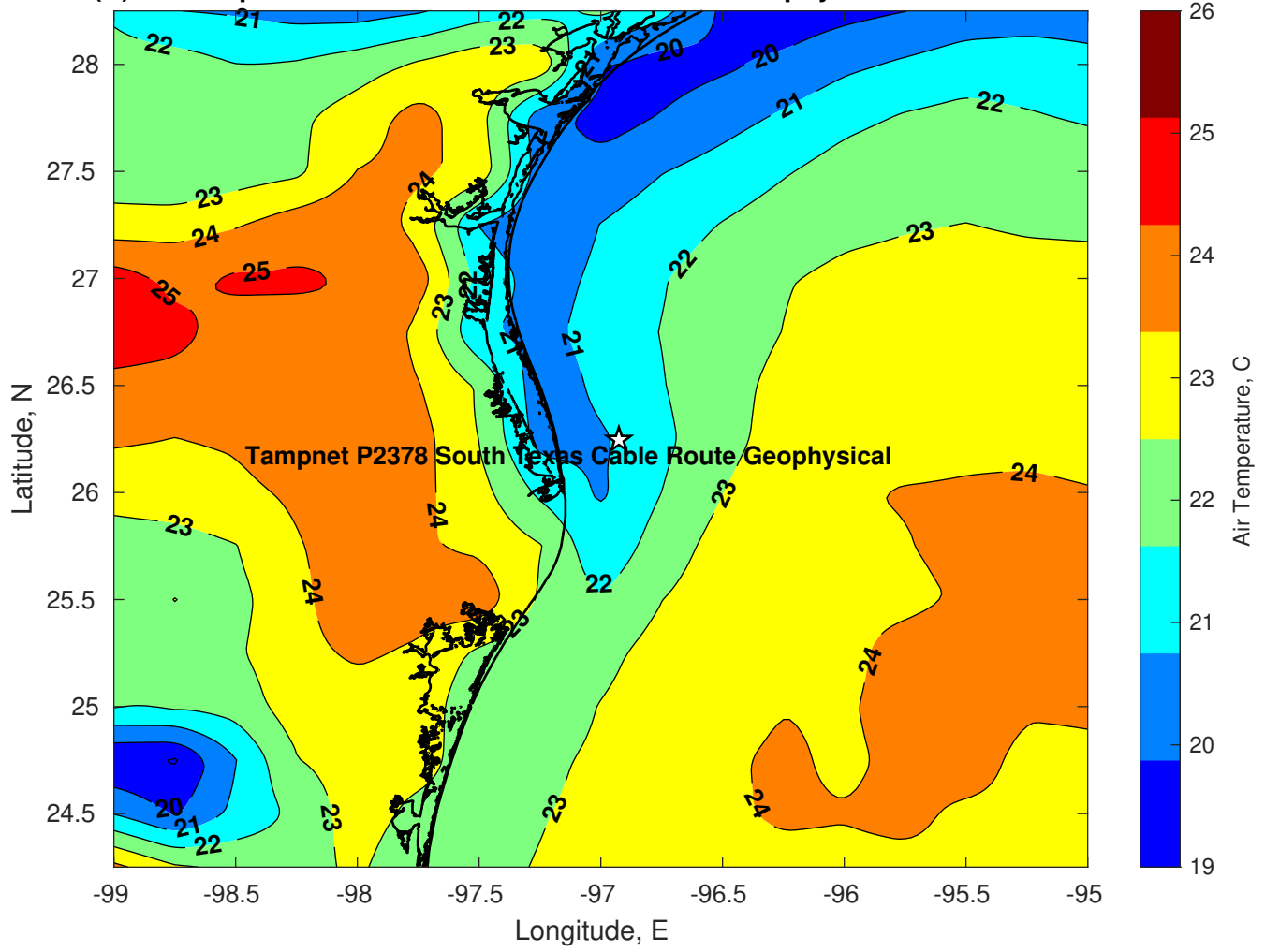
Pressure (mb) for Tampnet P2378 South Texas Cable Route Geophysical at 01-Mar-2025 00:00:00



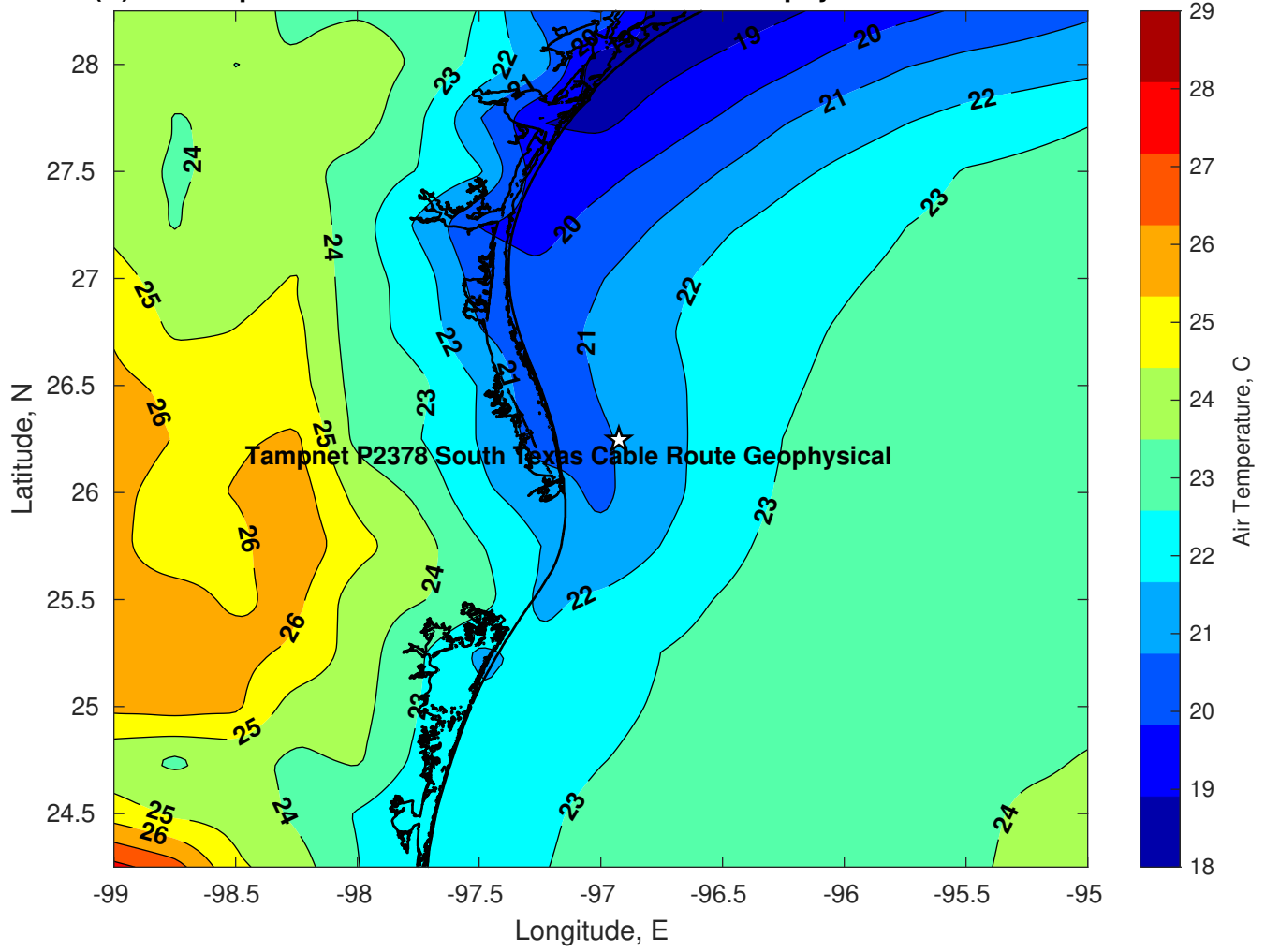
Pressure (mb) for Tampnet P2378 South Texas Cable Route Geophysical at 02-Mar-2025 00:00:00



Air Temperature (C) for Tampnet P2378 South Texas Cable Route Geophysical at 28-Feb-2025



Air Temperature (C) for Tampnet P2378 South Texas Cable Route Geophysical at 28-Feb-2025



Air Temperature (C) for Tampnet P2378 South Texas Cable Route Geophysical at 28-Feb-2025

