

\*\*\*\*\*

Marine Weather Forecast for Shell Noches GC19 PPL Geotechnical  
Forecast valid as of 01-Mar-2025 0900 GMT

\*\*\*\*\*

All times are local.

Today

Winds: N, 5-10 kts.  
Waves: N, 1-2 feet, 5-6 sec.  
No currents available.

Tonight

Winds: NE, 10-15 kts.  
Waves: NE, 1-2 feet, 4-5 sec.  
No currents available.

Saturday

Winds: NE, 5-10 kts.  
Waves: N, 1-2 feet, 4-5 sec.  
No currents available.

Sunday Night

Winds: NE, 20-25 kts.  
Waves: E, 4-5 feet, 5-6 sec.  
No currents available.

Sunday

Winds: E, 15-20 kts.  
Waves: E, 4-5 feet, 5-6 sec.  
No currents available.

Monday Night

Winds: NE, 20-25 kts.  
Waves: NE, 6-7 feet, 6-7 sec.  
No currents available.

Monday

Winds: NE, 20-25 kts.  
Waves: E, 5-6 feet, 6-7 sec.  
No currents available.

Tuesday Night

Winds: NW, 20-25 kts.  
Waves: N, 9-10 feet, 8-9 sec.  
No currents available.

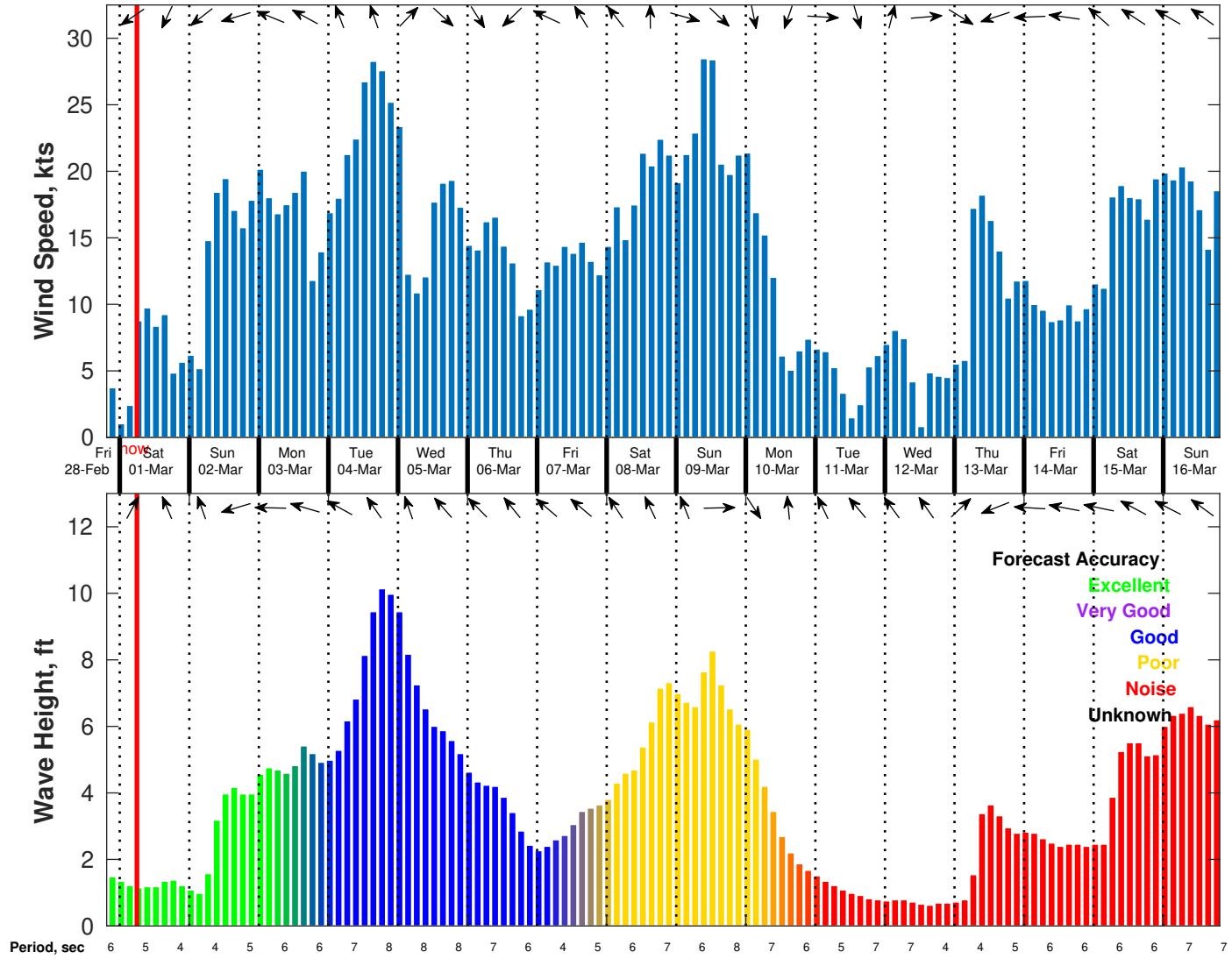
Tuesday

Winds: N, 25-30 kts.  
Waves: NE, 10-11 feet, 8-9 sec.  
No currents available.

Wednesday Night

Winds: N, 15-20 kts.  
Waves: NE, 4-5 feet, 7-8 sec.  
No currents available.

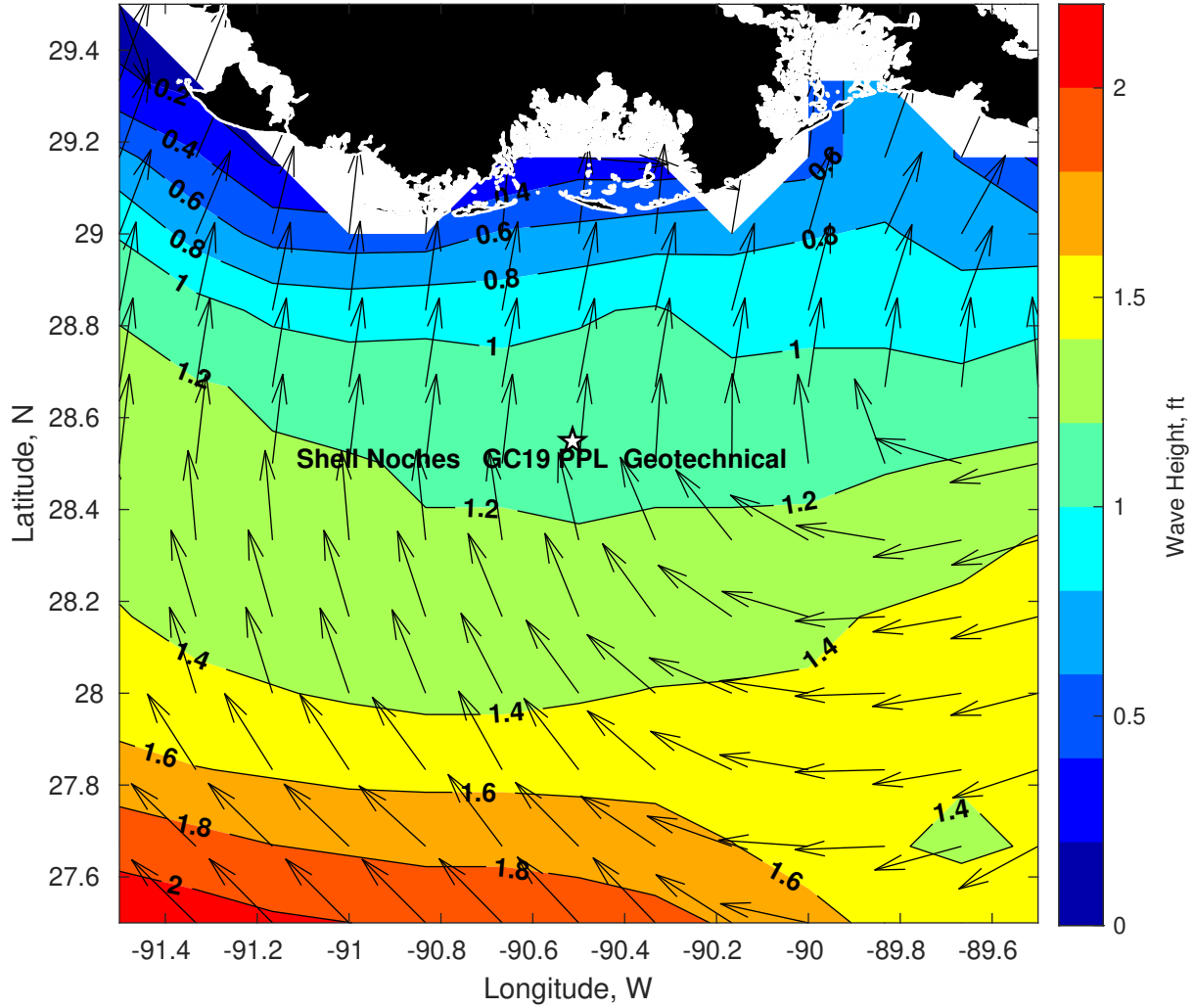
**Wind & Wave Forecast for Shell Noches GC19 PPL Geotechnical from 28-Feb-2025 20:00:00 to 16-Mar-2025 20:00:00**



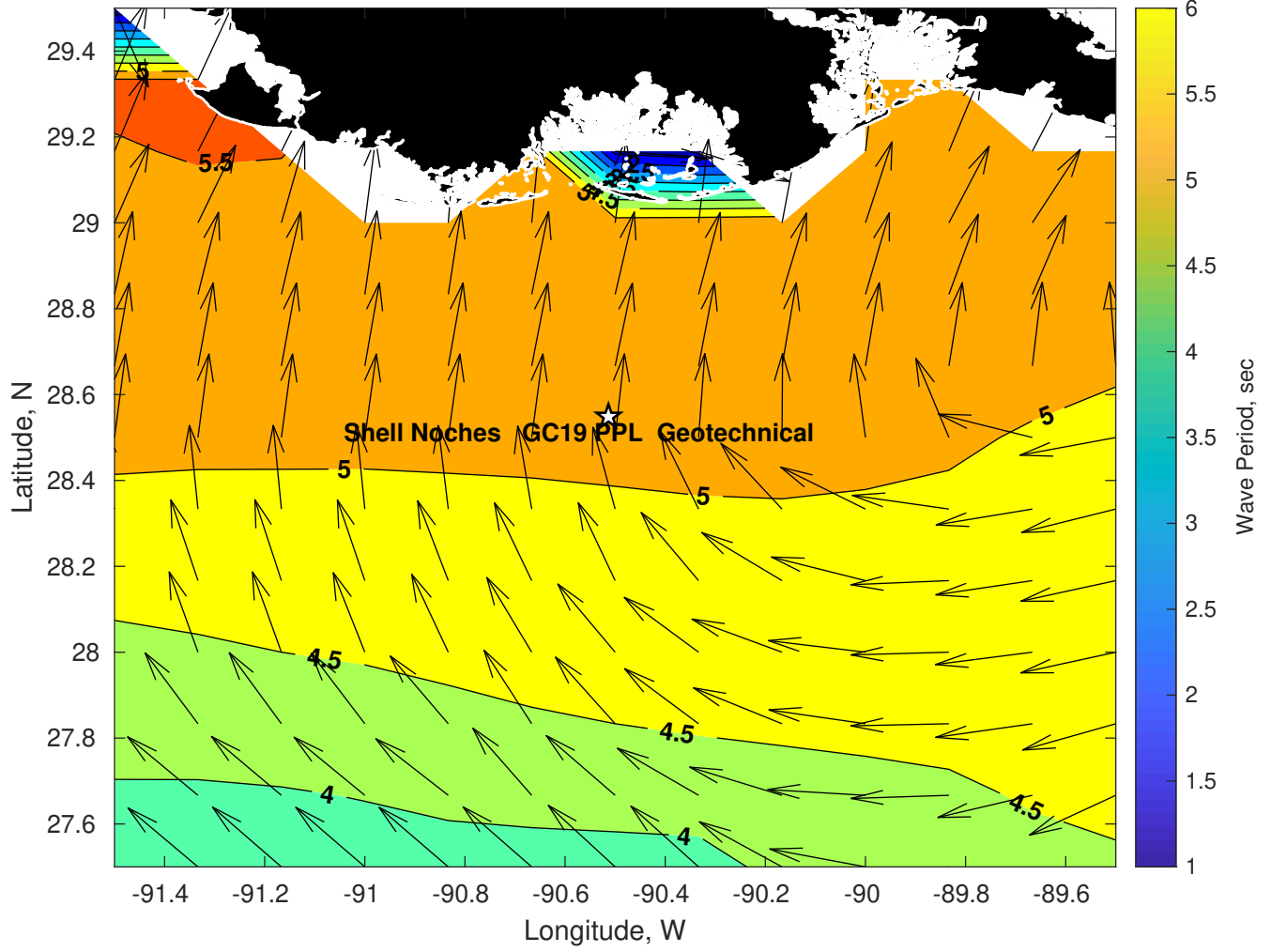
**Met Forecast for Shell Noches GC19 PPL Geotechnical from 01-Mar-2025 00:00:00 to 08-Mar-2025 00:00:00**



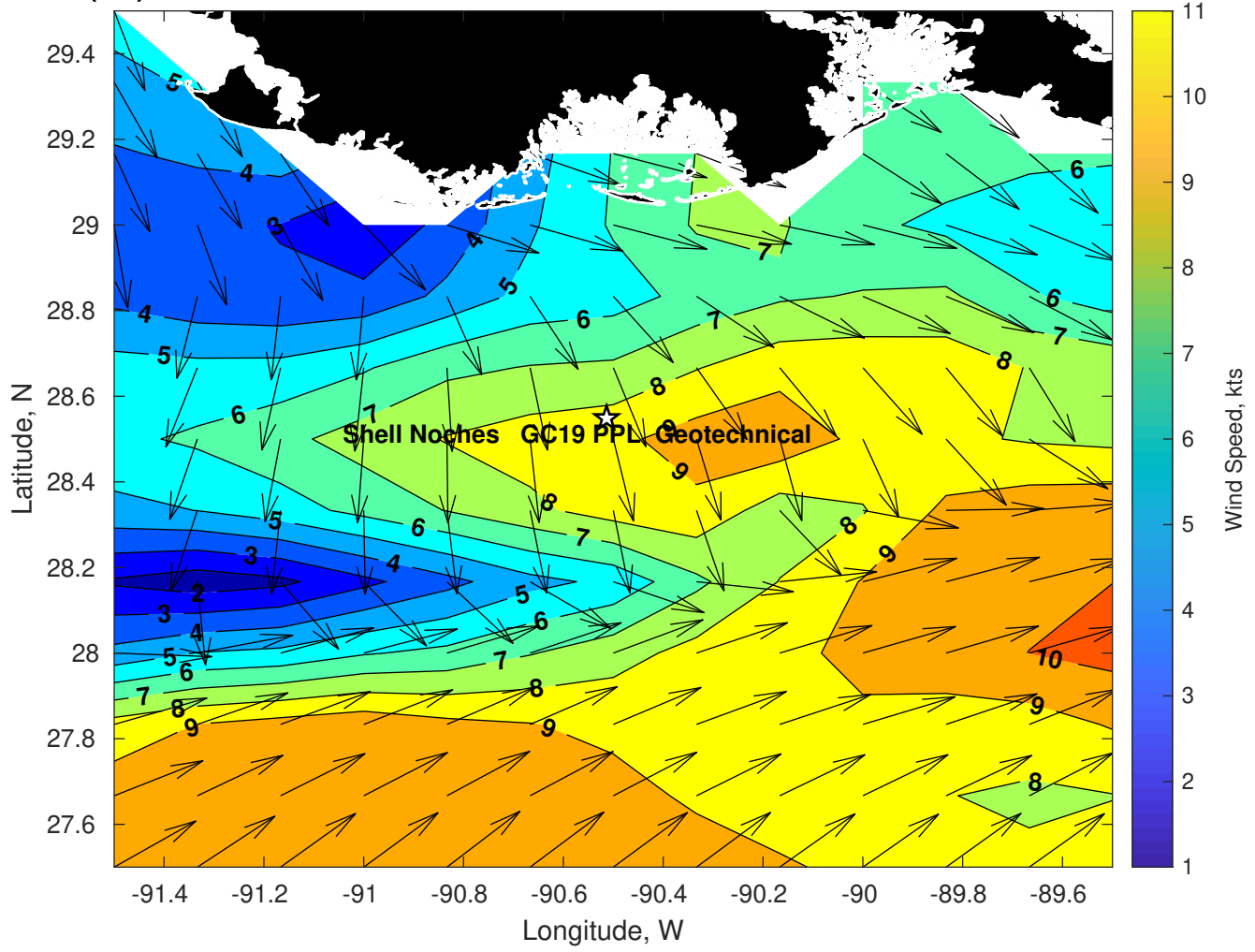
Wave Height (ft) for Shell Noches GC19 PPL Geotechnical at 01-Mar-2025 09:00:00



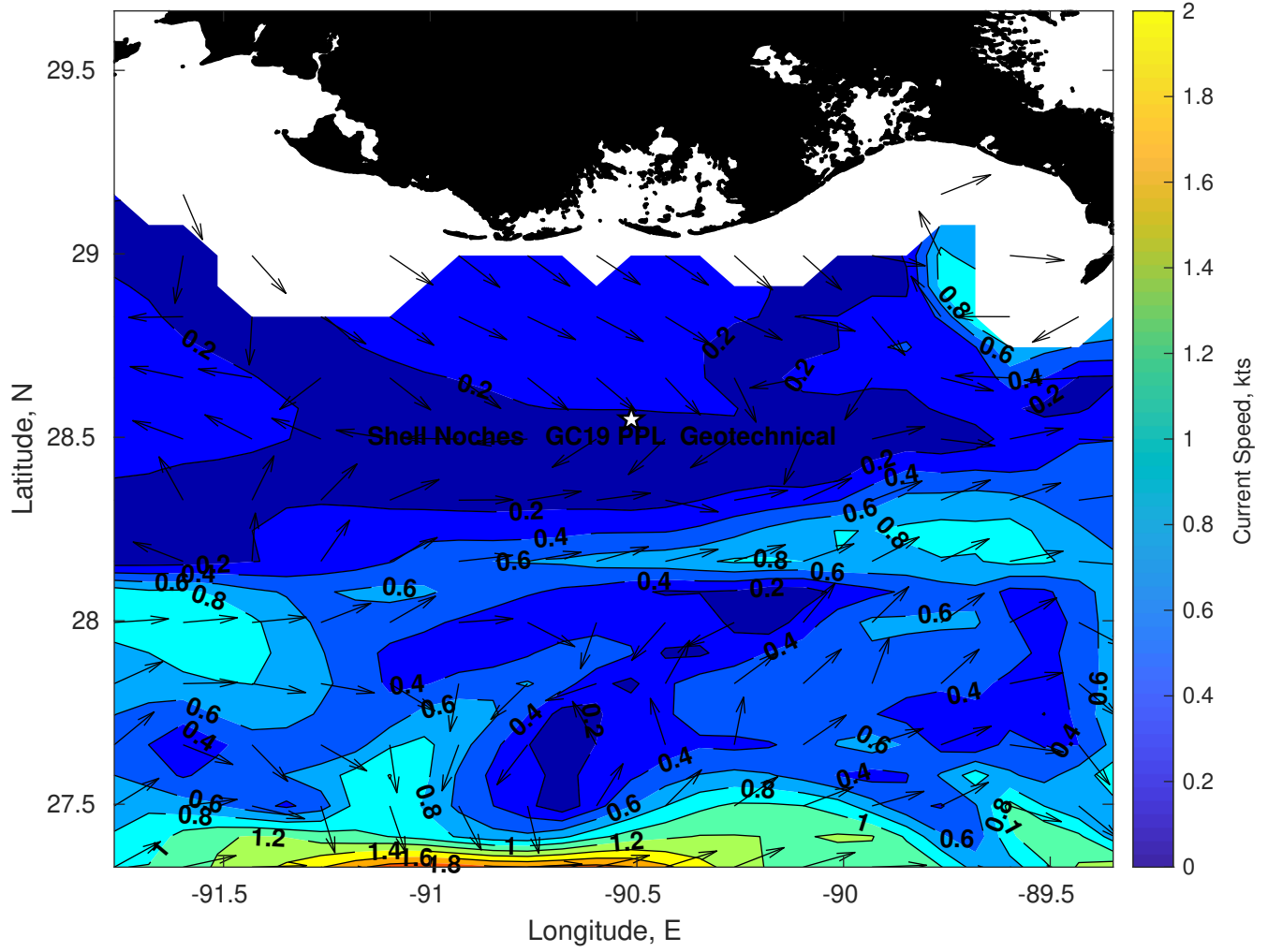
Wave Period (sec) for Shell Noches GC19 PPL Geotechnical at 01-Mar-2025 09:00:00



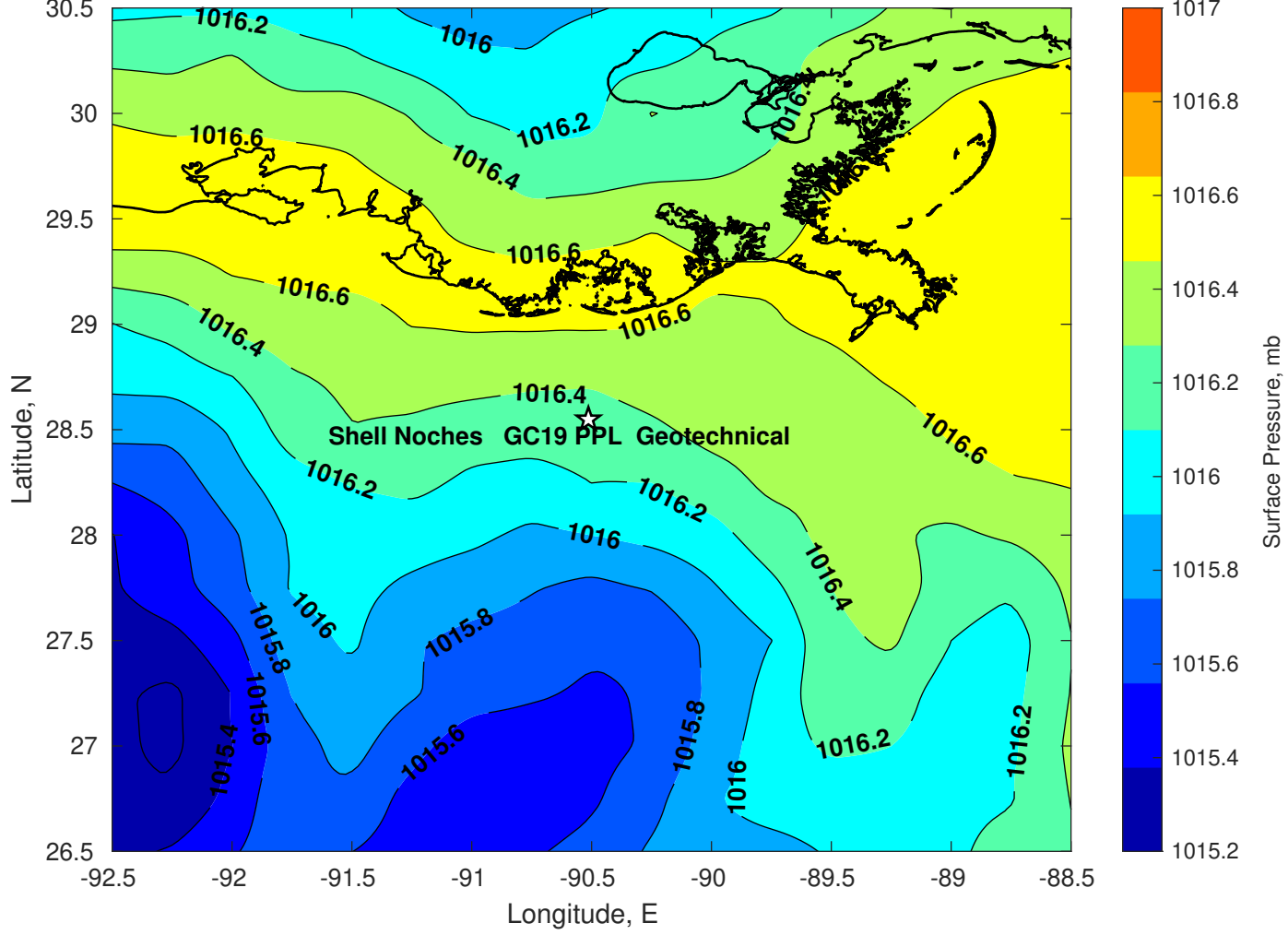
**Winds (kts) for Shell Noches GC19 PPL Geotechnical at 01-Mar-2025 09:00:00**



Surface Currents for Shell Noches GC19 PPL Geotechnical at 28-Feb-2025 00:00:00

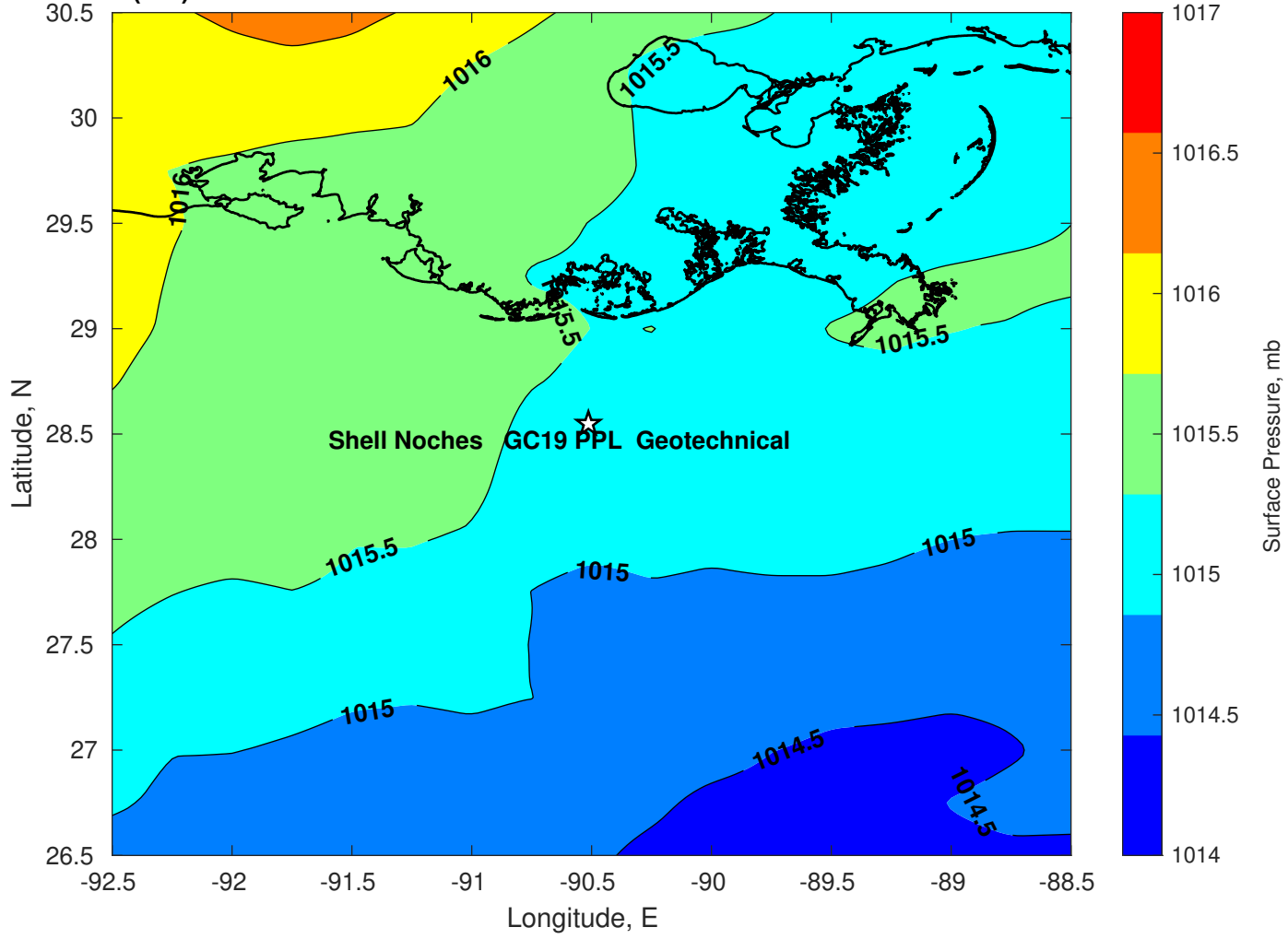


Surface Pressure (mb) for Shell Noches GC19 PPL Geotechnical at 01-Mar-2025 00:00:00

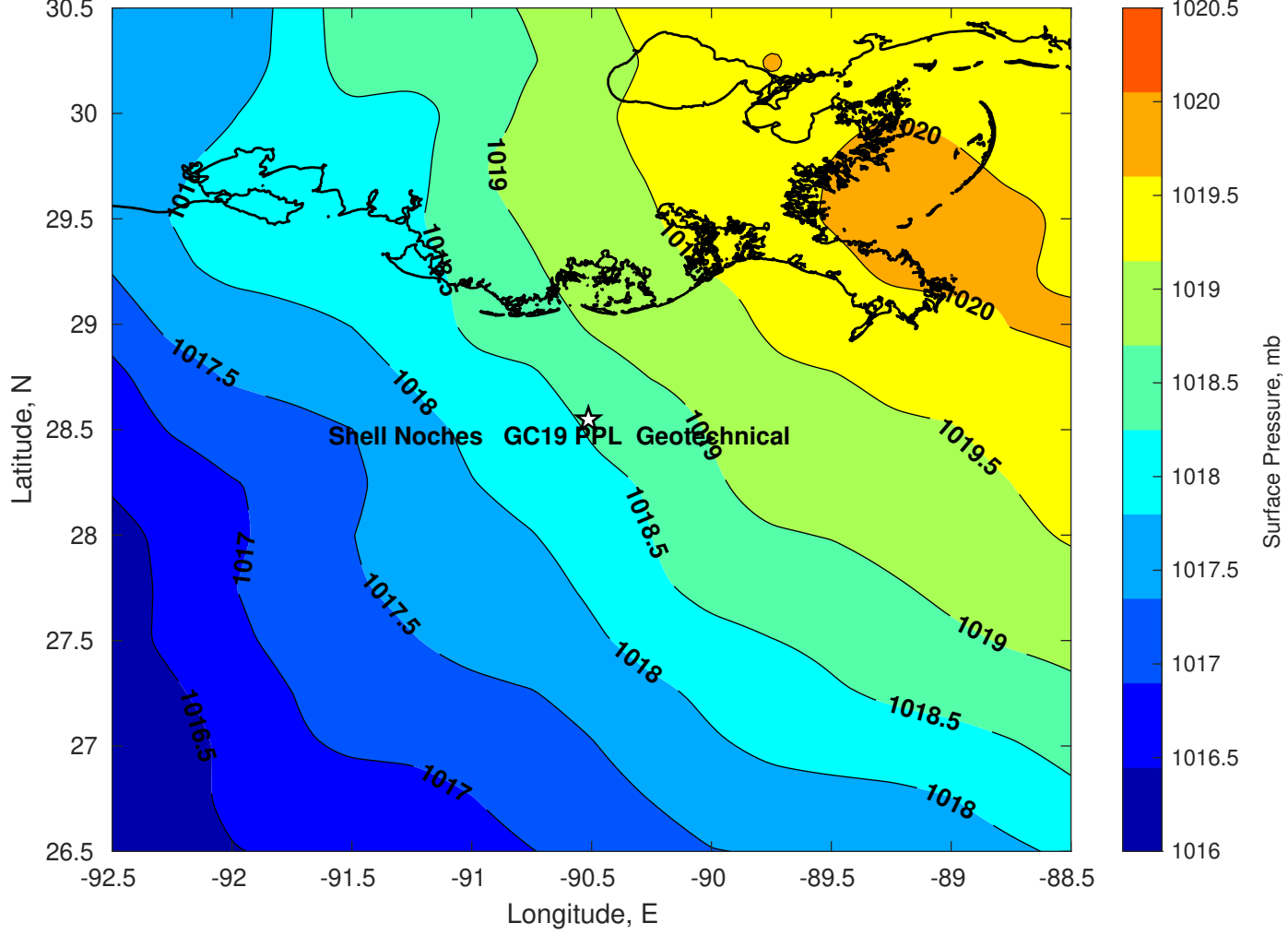




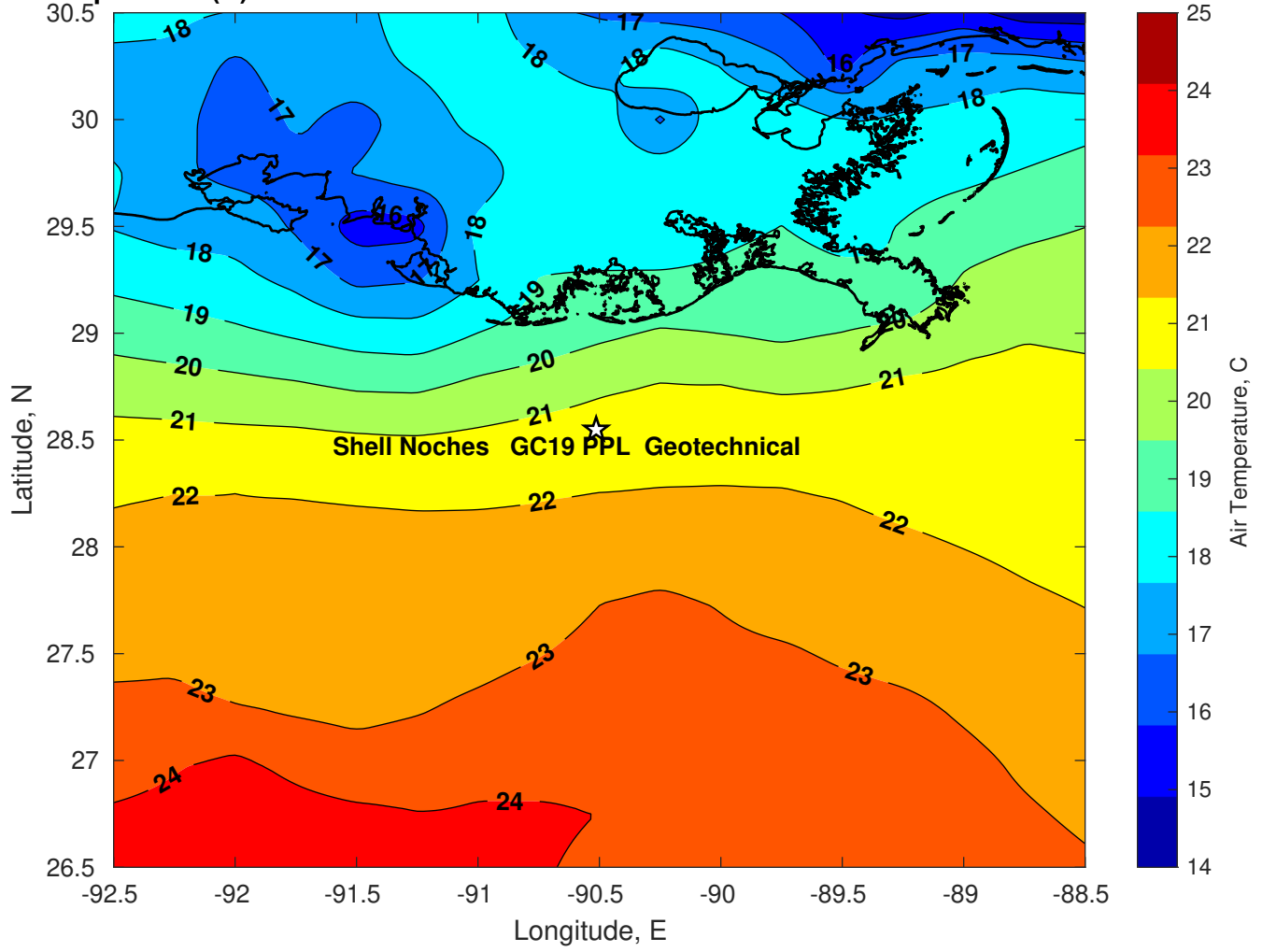
Surface Pressure (mb) for Shell Noches GC19 PPL Geotechnical at 02-Mar-2025 00:00:00



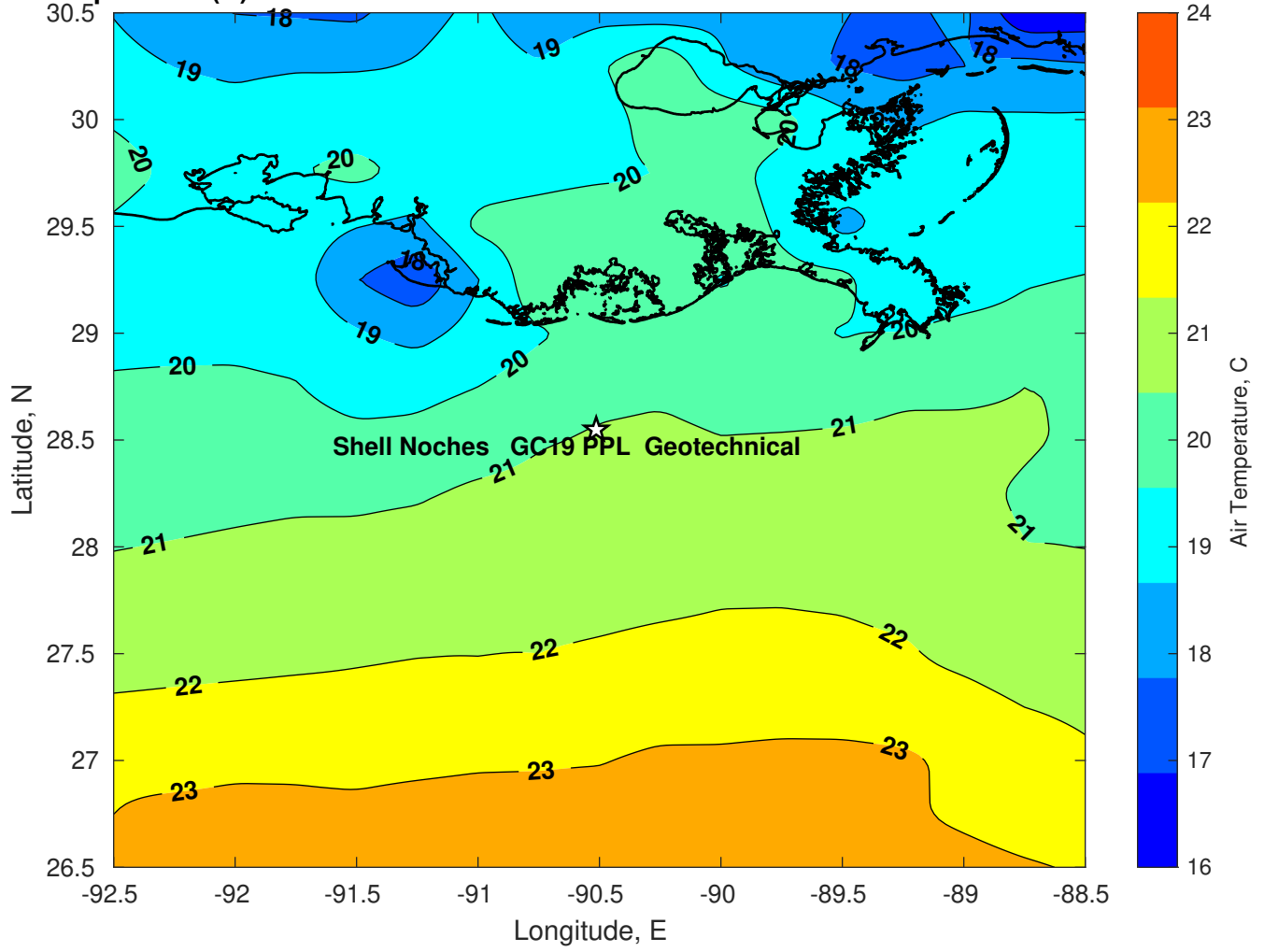
Surface Pressure (mb) for Shell Noches GC19 PPL Geotechnical at 03-Mar-2025 00:00:00



**Air Temperature (C) for Shell Noches GC19 PPL Geotechnical at 01-Mar-2025**



Air Temperature (C) for Shell Noches GC19 PPL Geotechnical at 01-Mar-2025



**Air Temperature (C) for Shell Noches GC19 PPL Geotechnical at 01-Mar-2025**

