

\*\*\*\*\*

Marine Weather Forecast for CSA (ONHYM) PPL EBS – Sierra Leone

Forecast valid as of 02-Mar-2025 0900 GMT

\*\*\*\*\*

All times are local.

Today

Winds: NW, 10-15 kts.

Waves: N, 1-2 feet, 12-13 sec.

No currents available.

Tonight

Winds: W, 10-15 kts.

Waves: N, 1-2 feet, 11-12 sec.

No currents available.

Monday

Winds: NW, 10-15 kts.

Waves: N, 2-3 feet, 11-12 sec.

No currents available.

Monday Night

Winds: NW, 10-15 kts.

Waves: W, 2-3 feet, 3-4 sec.

No currents available.

Tuesday

Winds: NW, 10-15 kts.

Waves: N, 2-3 feet, 8-9 sec.

No currents available.

Tuesday Night

Winds: NW, 10-15 kts.

Waves: W, 2-3 feet, 3-4 sec.

No currents available.

Wednesday

Winds: NW, 10-15 kts.

Waves: W, 2-3 feet, 5-6 sec.

No currents available.

Wednesday Night

Winds: NW, 10-15 kts.

Waves: W, 2-3 feet, 3-4 sec.

No currents available.

Thursday

Winds: NW, 10-15 kts.

Waves: W, 2-3 feet, 5-6 sec.

No currents available.

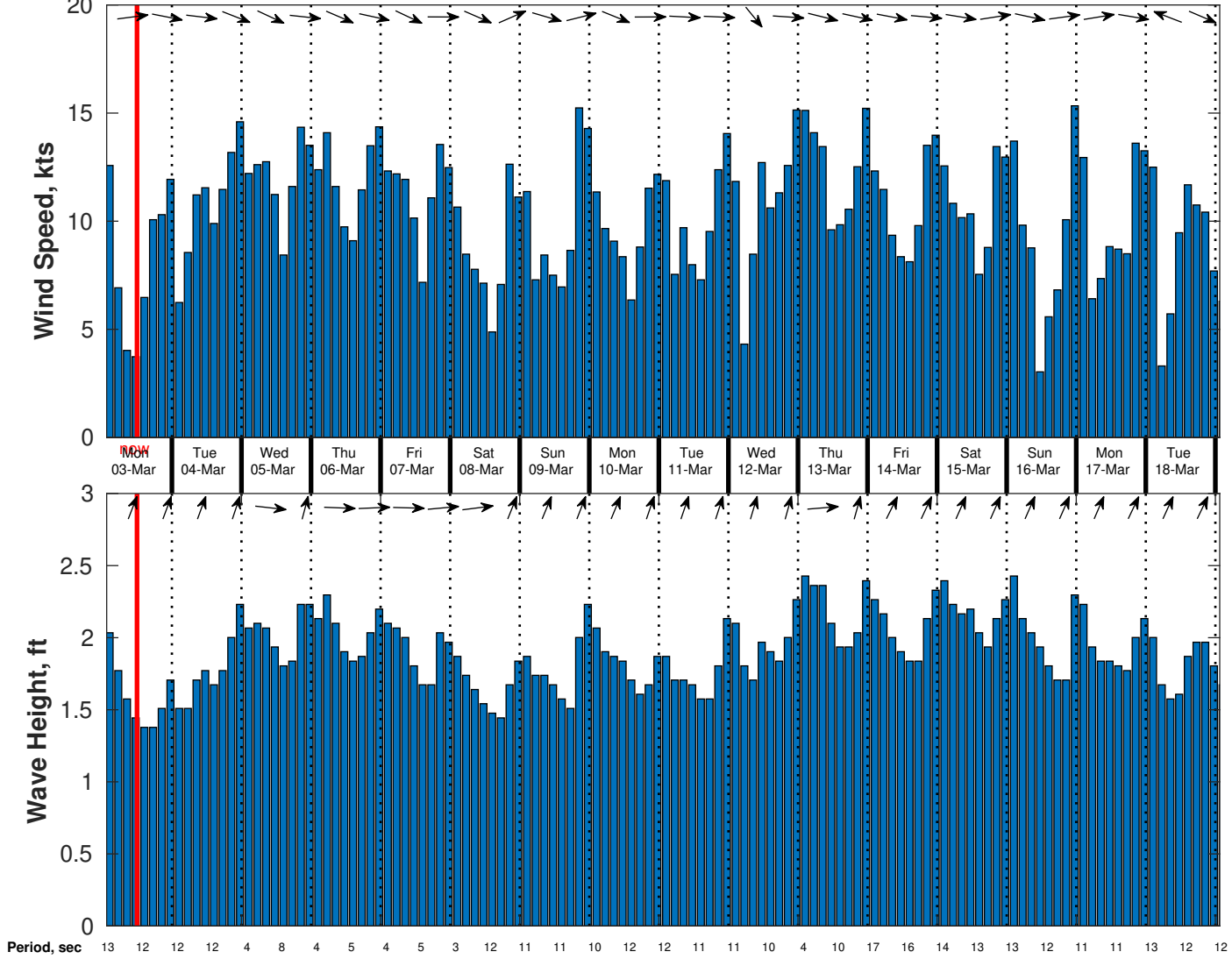
Thursday Night

Winds: NW, 10-15 kts.

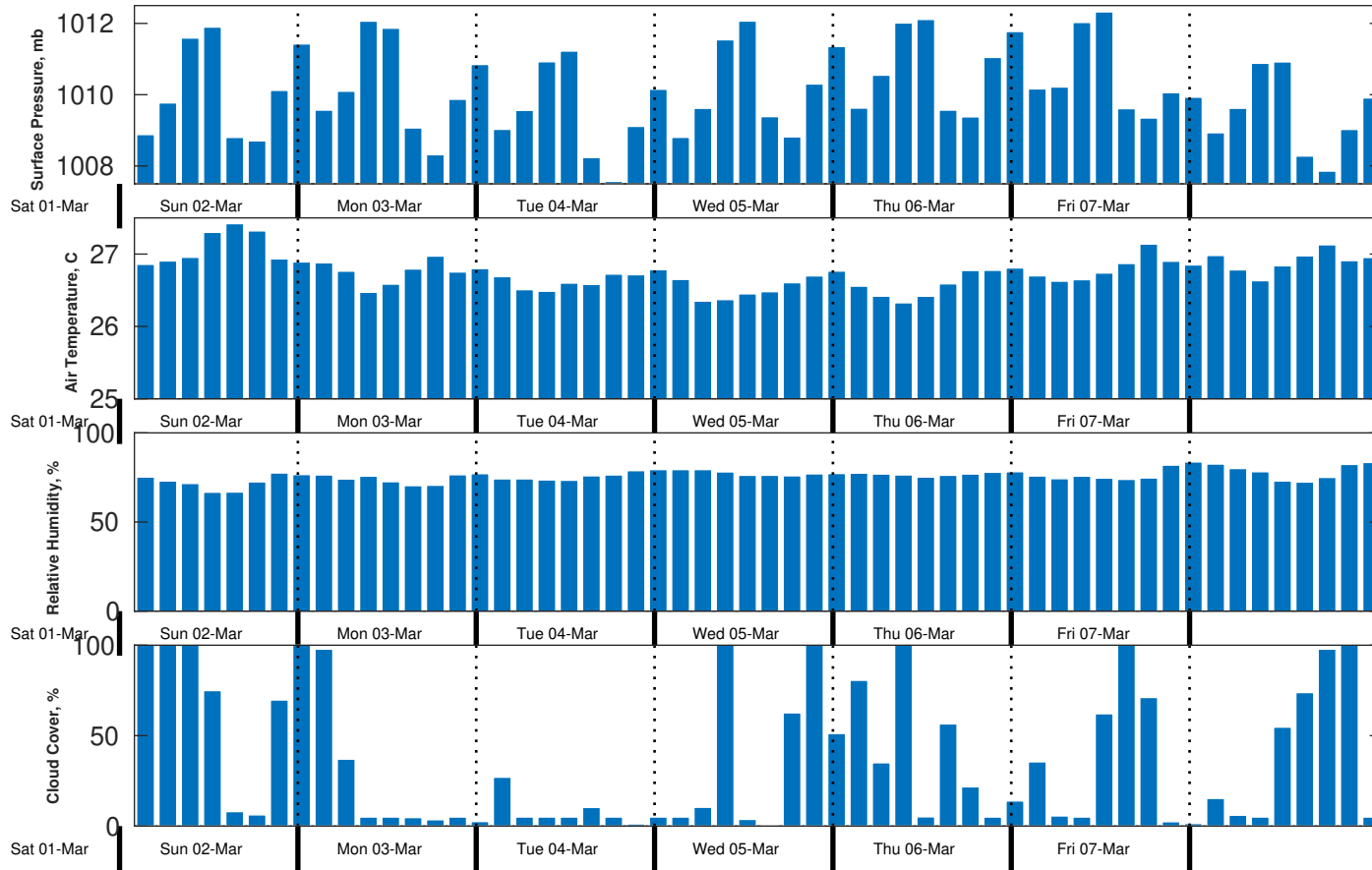
Waves: W, 1-2 feet, 5-6 sec.

No currents available.

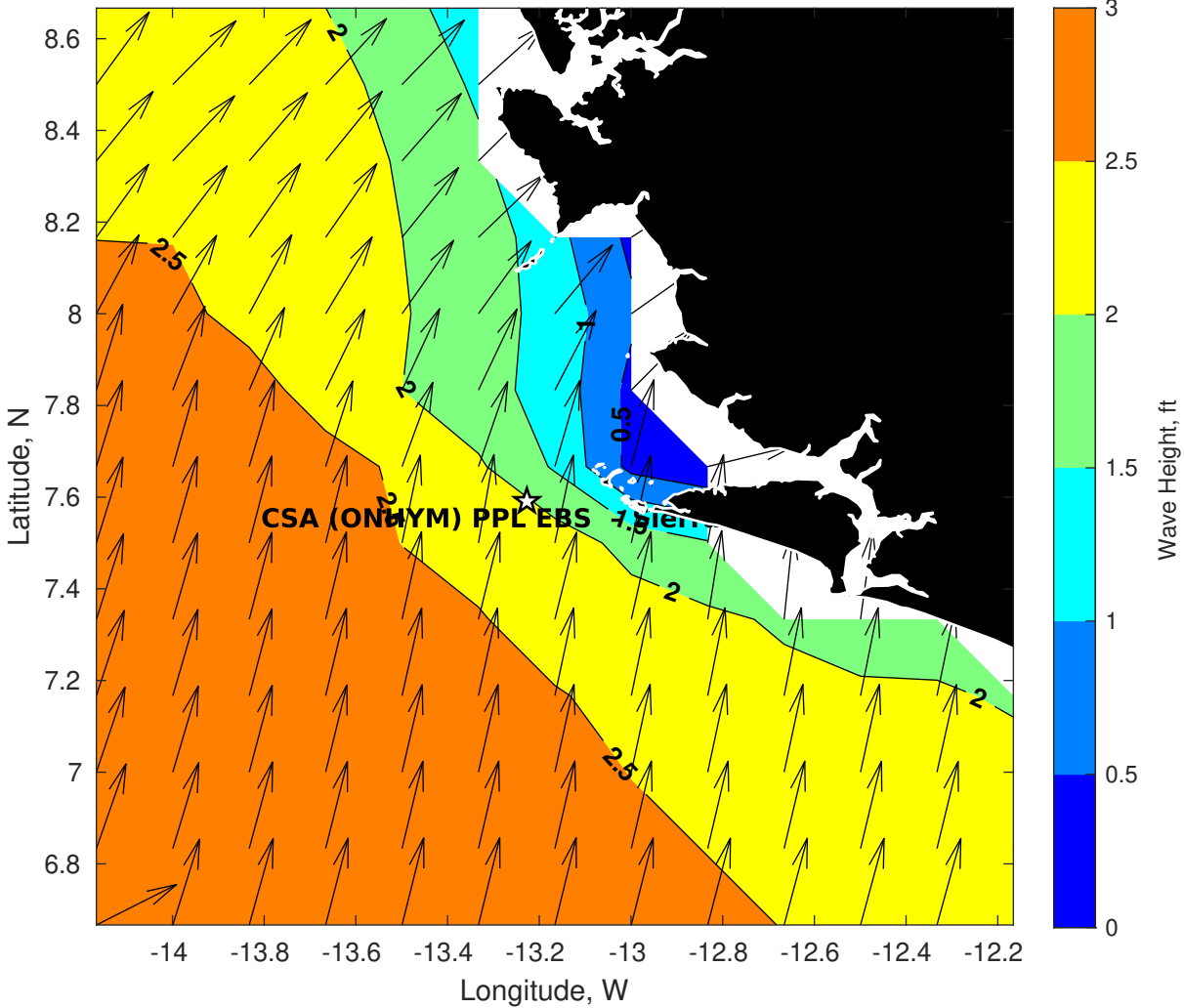
**Wind & Wave Forecast for CSA (ONHYM) PPL EBS - Sierra Leone from 02-Mar-2025 01:00:00 to 18-Mar-2025 01:00:00**



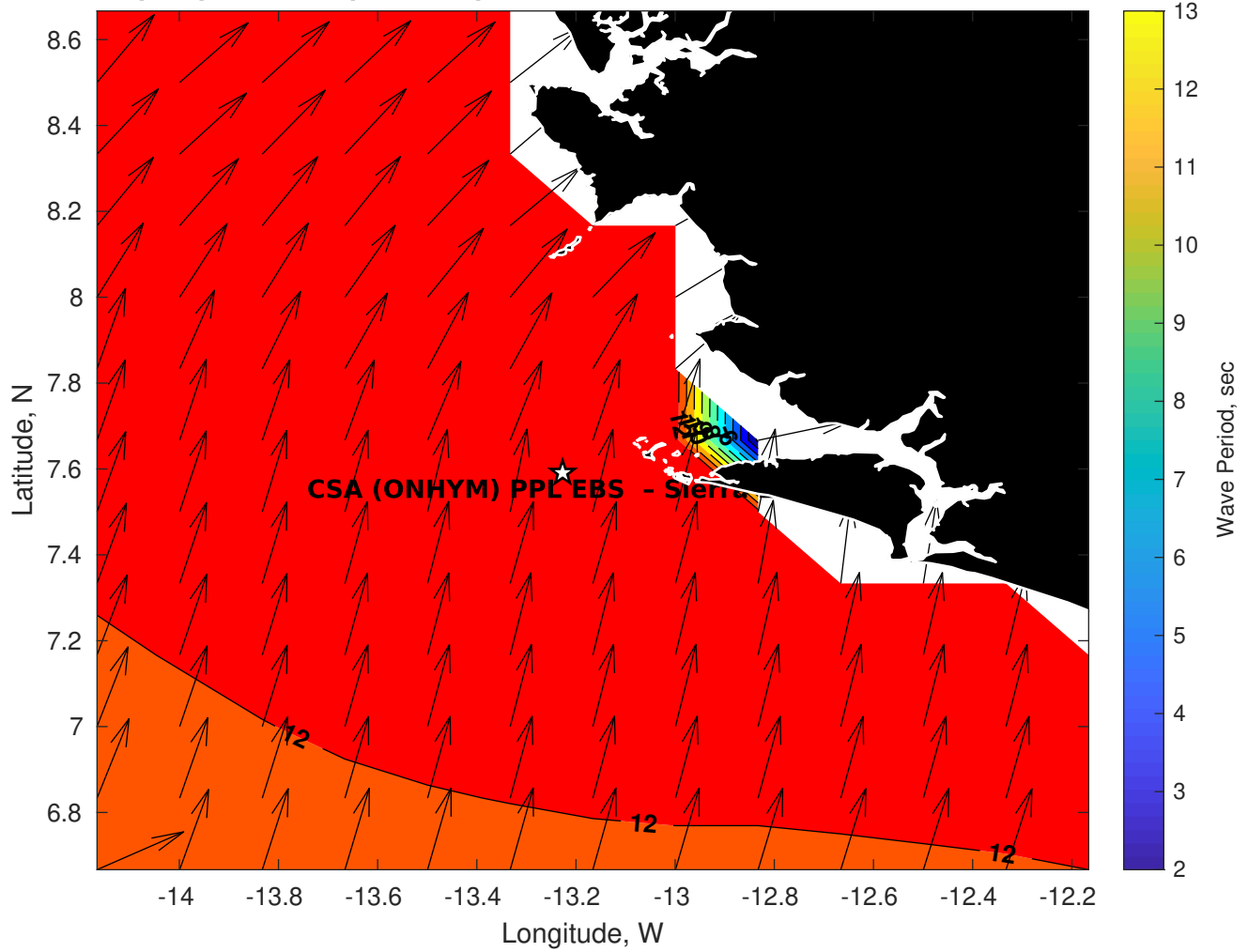
**Met Forecast for CSA (ONHYM) PPL EBS - Sierra Leone from 02-Mar-2025 00:00:00 to 09-Mar-2025 00:00:00**



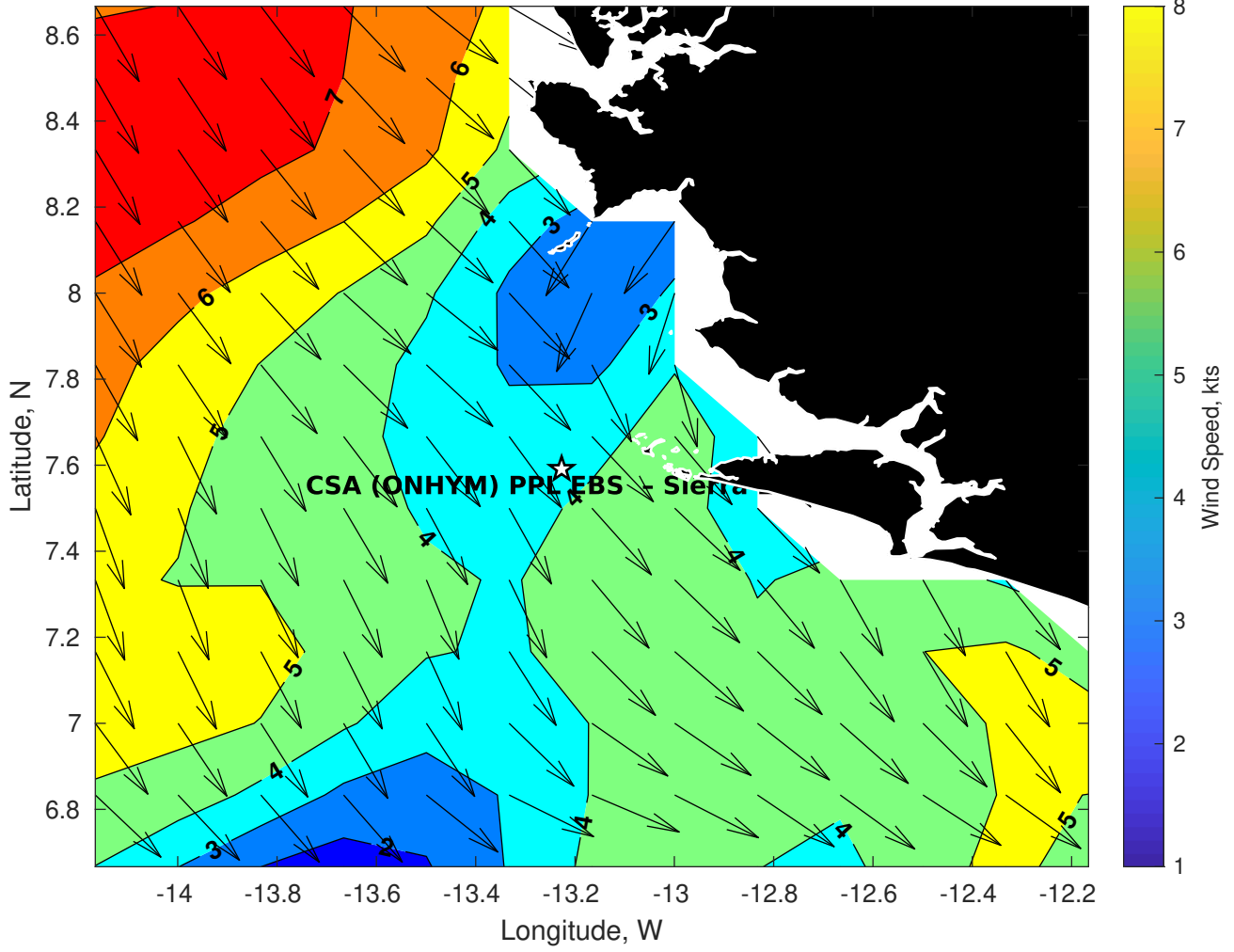
**Wave Height (ft) for CSA (ONHYM) PPL EBS - Sierra Leone at 02-Mar-2025 09:00:00**



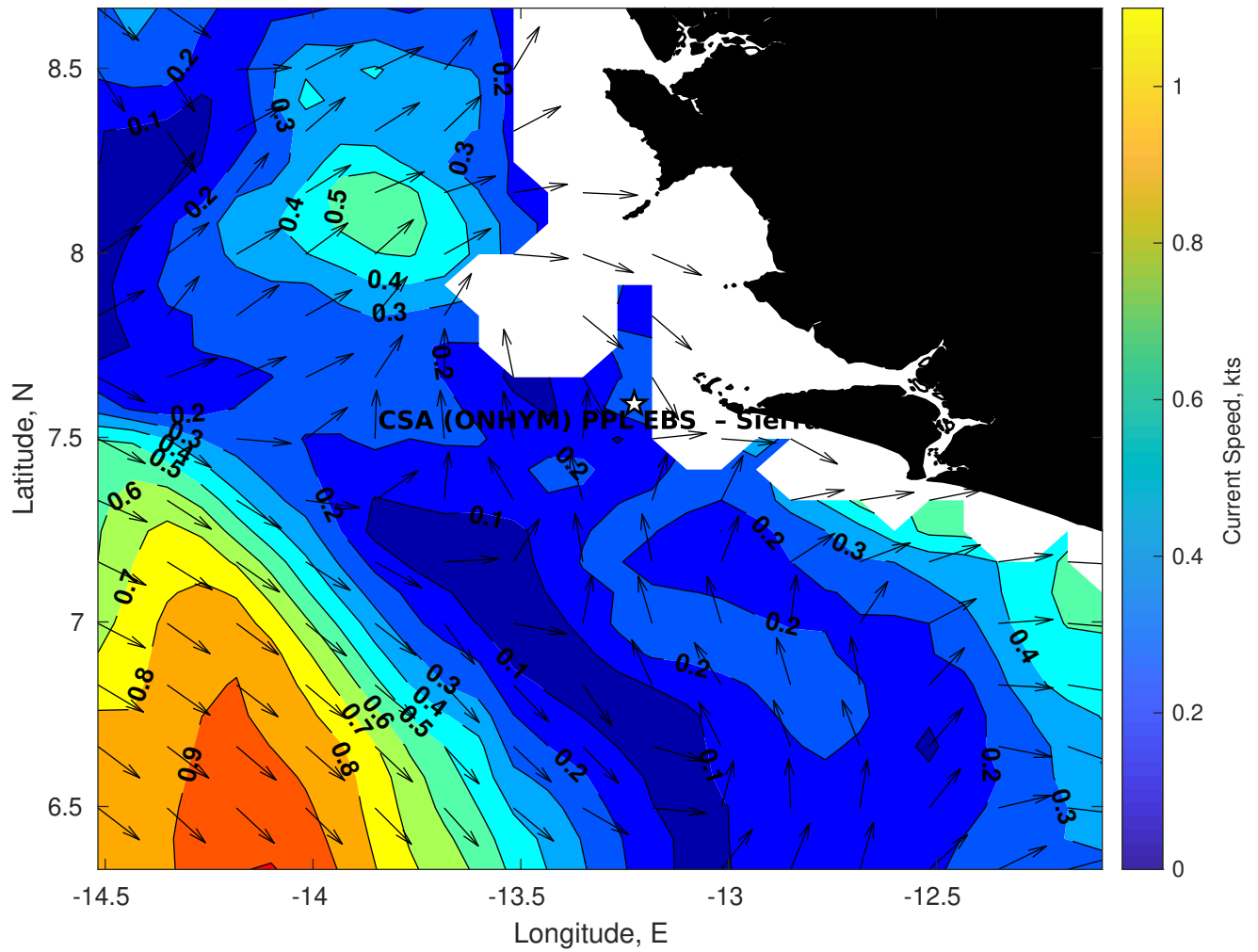
**Wave Period (sec) for CSA (ONHYM) PPL EBS - Sierra Leone at 02-Mar-2025 09:00:00**



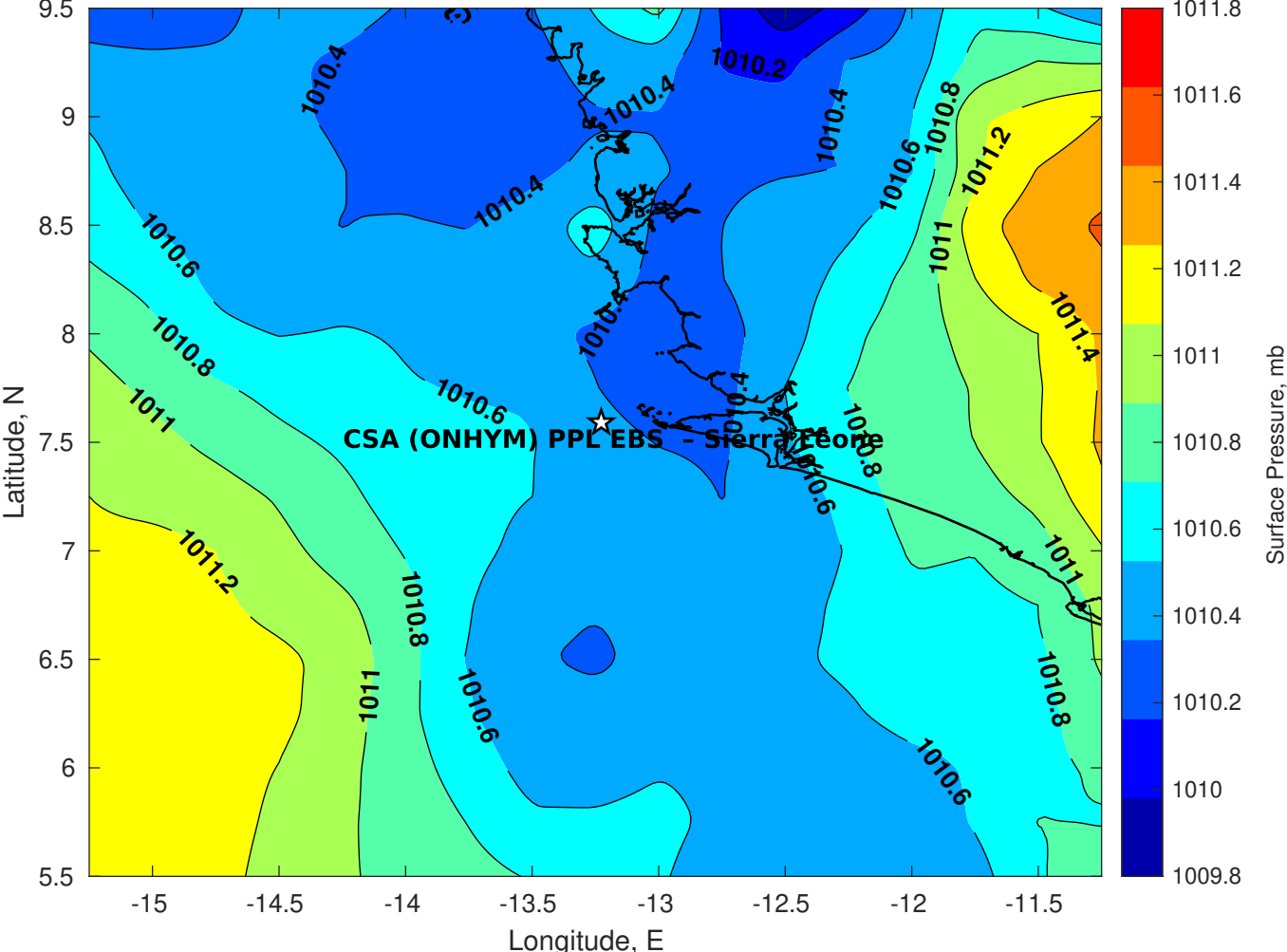
**Winds (kts) for CSA (ONHYM) PPL EBS - Sierra Leone at 02-Mar-2025 09:00:00**



**Surface Currents for CSA (ONHYM) PPL EBS - Sierra Leone at 01-Mar-2025 00:00:00**

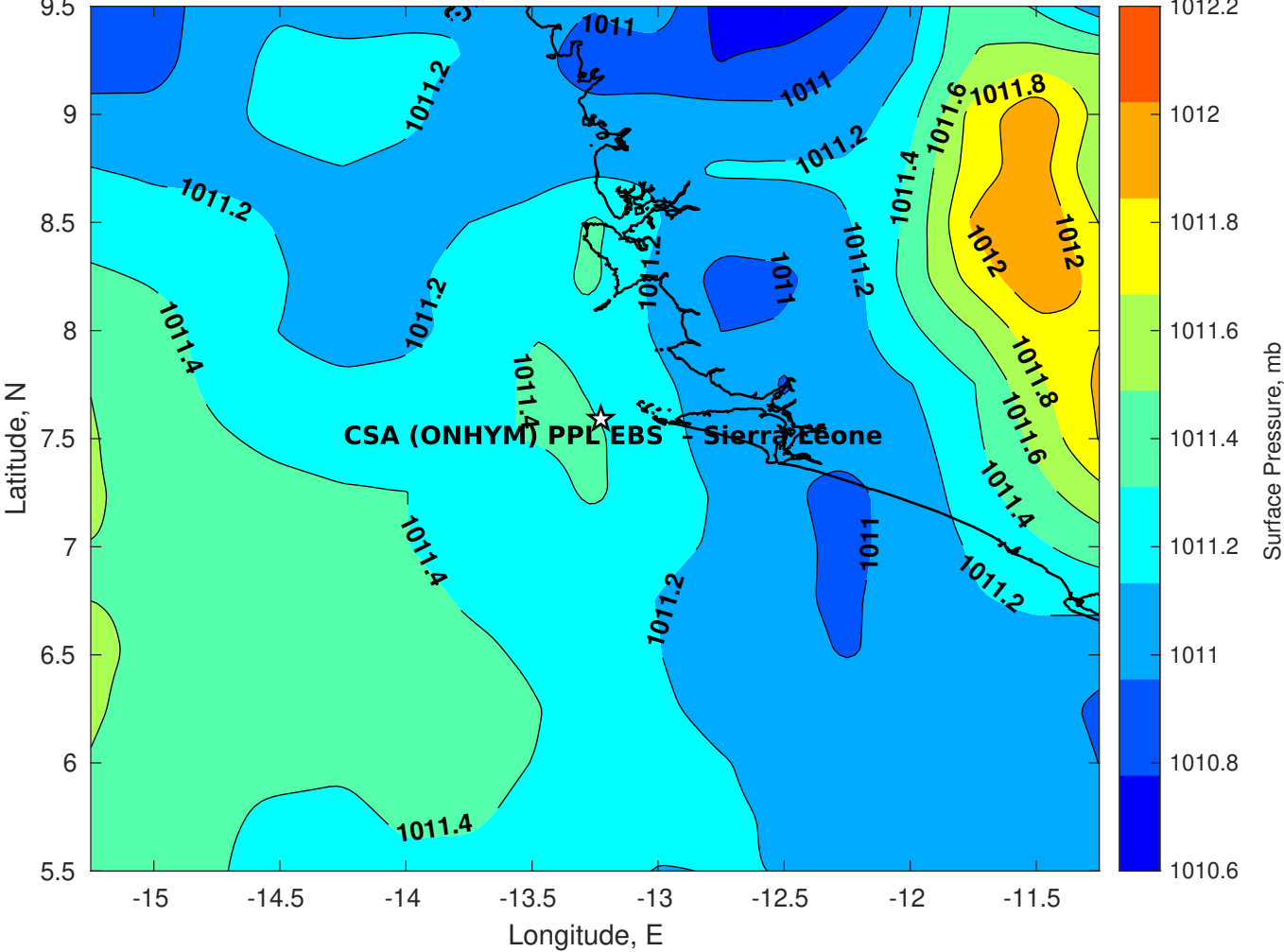


Surface Pressure (mb) for CSA (ONHYM) PPL EBS - Sierra Leone at 02-Mar-2025 00:00:00

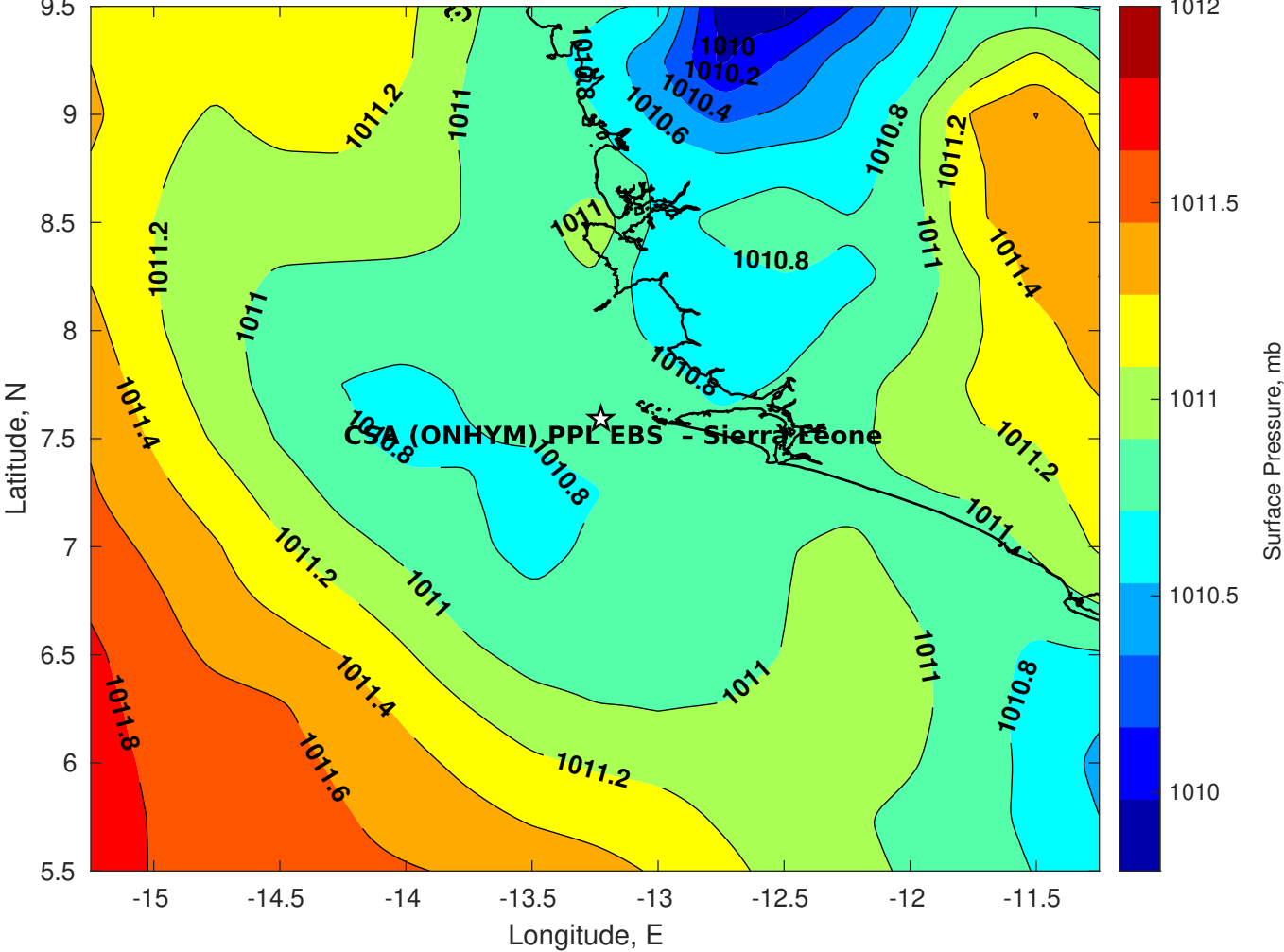




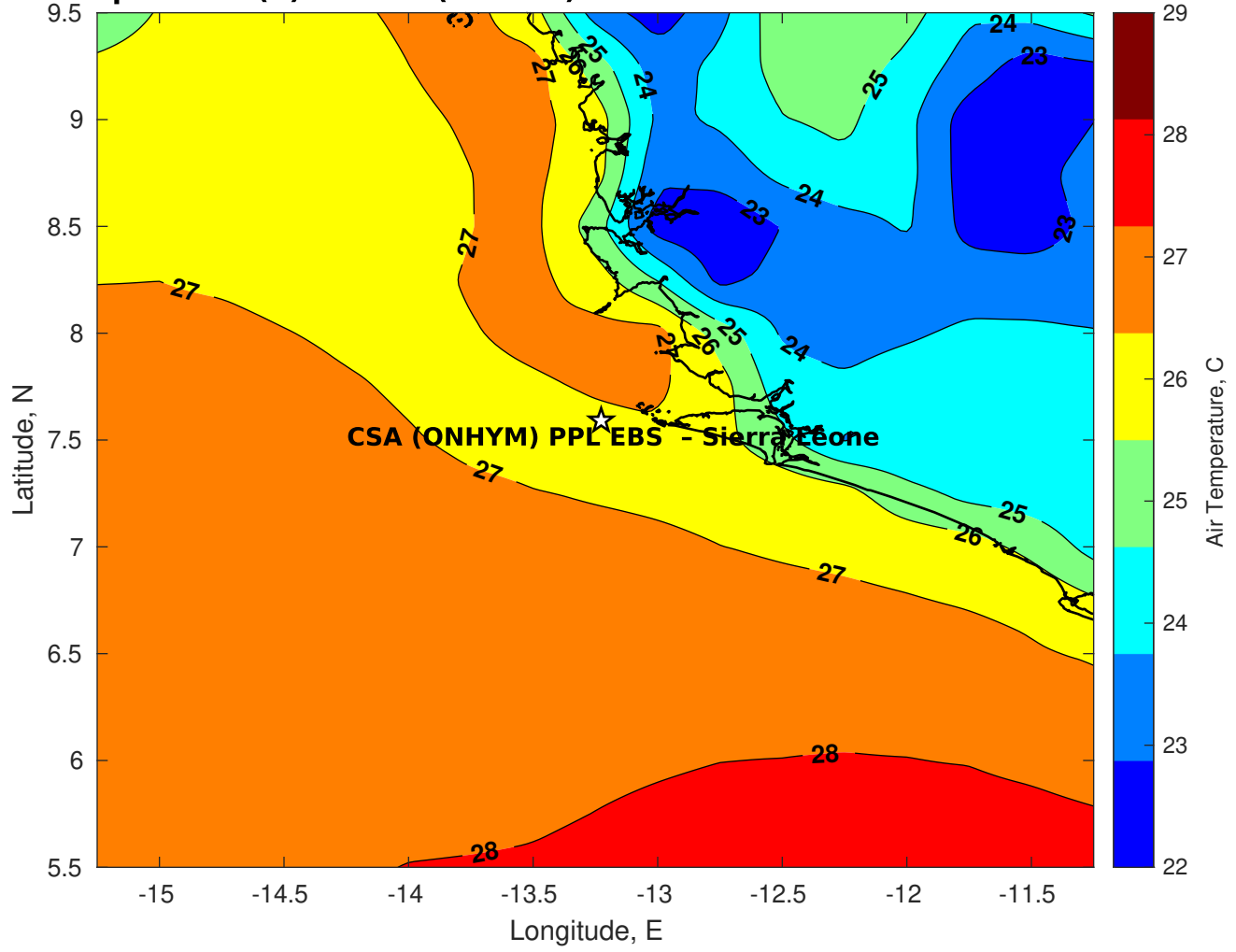
Surface Pressure (mb) for CSA (ONHYM) PPL EBS - Sierra Leone at 03-Mar-2025 00:00:00



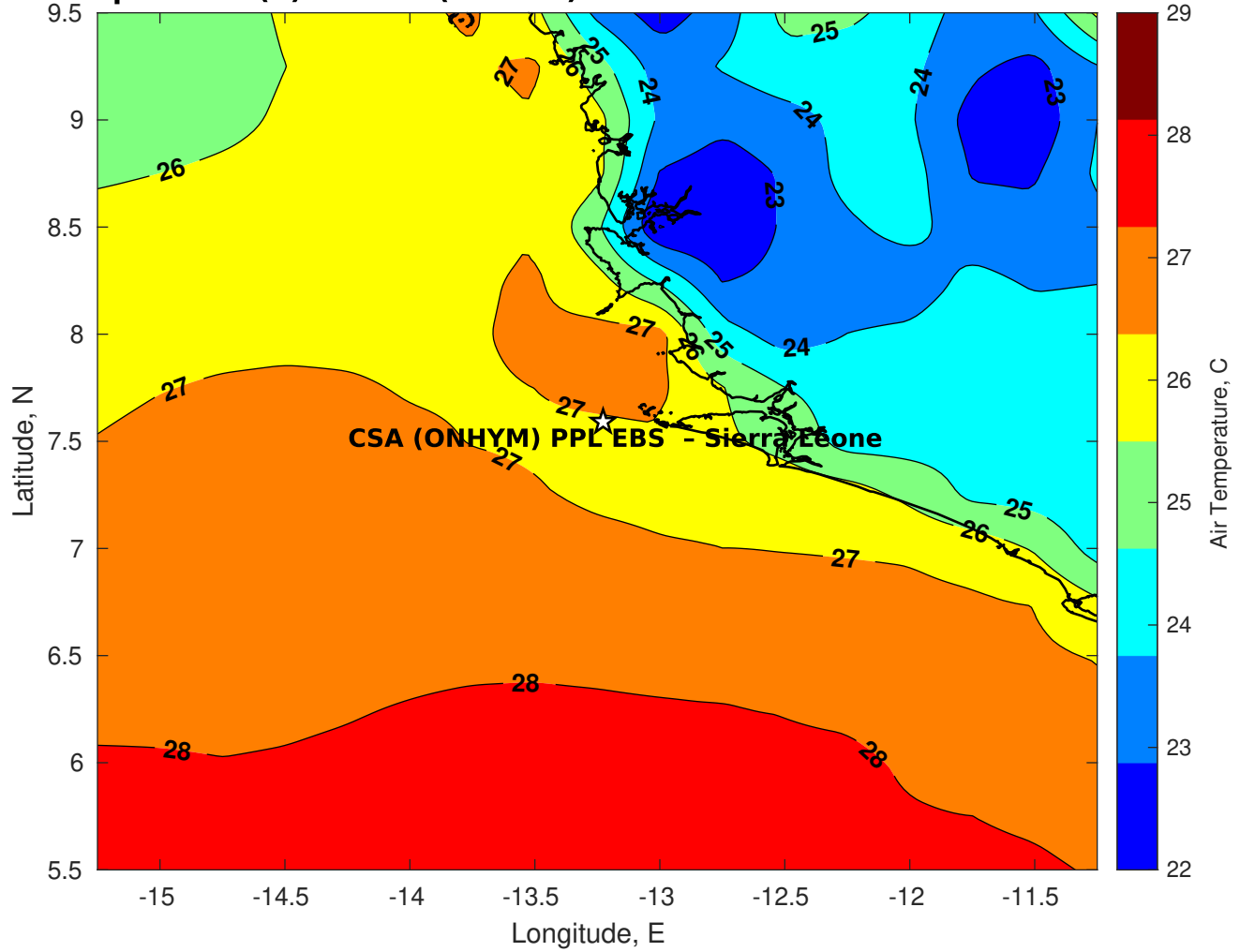
Surface Pressure (mb) for CSA (ONHYM) PPL EBS - Sierra Leone at 04-Mar-2025 00:00:00



**Air Temperature (C) for CSA (ONHYM) PPL EBS - Sierra Leone at 02-Mar-2025**



**Air Temperature (C) for CSA (ONHYM) PPL EBS - Sierra Leone at 02-Mar-2025**



**Air Temperature (C) for CSA (ONHYM) PPL EBS - Sierra Leone at 02-Mar-2025**

