
Marine Weather Forecast for CSA (ONHYM) PPL EBS - Cote d'Ivoire
Forecast valid as of 03-Mar-2025 0900 GMT

All times are local.

Today

Winds: NW, 10-15 kts.
Waves: N, 2-3 feet, 11-12 sec.
No currents available.

Tonight

Winds: NW, 10-15 kts.
Waves: N, 3-4 feet, 8-9 sec.
No currents available.

Tuesday

Winds: NW, 10-15 kts.
Waves: N, 3-4 feet, 7-8 sec.
No currents available.

Tuesday Night

Winds: NW, 10-15 kts.
Waves: N, 3-4 feet, 9-10 sec.
No currents available.

Wednesday

Winds: NW, 10-15 kts.
Waves: N, 3-4 feet, 9-10 sec.
No currents available.

Wednesday Night

Winds: NW, 10-15 kts.
Waves: N, 3-4 feet, 9-10 sec.
No currents available.

Thursday

Winds: NW, 15-20 kts.
Waves: N, 3-4 feet, 8-9 sec.
No currents available.

Thursday Night

Winds: NW, 10-15 kts.
Waves: N, 3-4 feet, 8-9 sec.
No currents available.

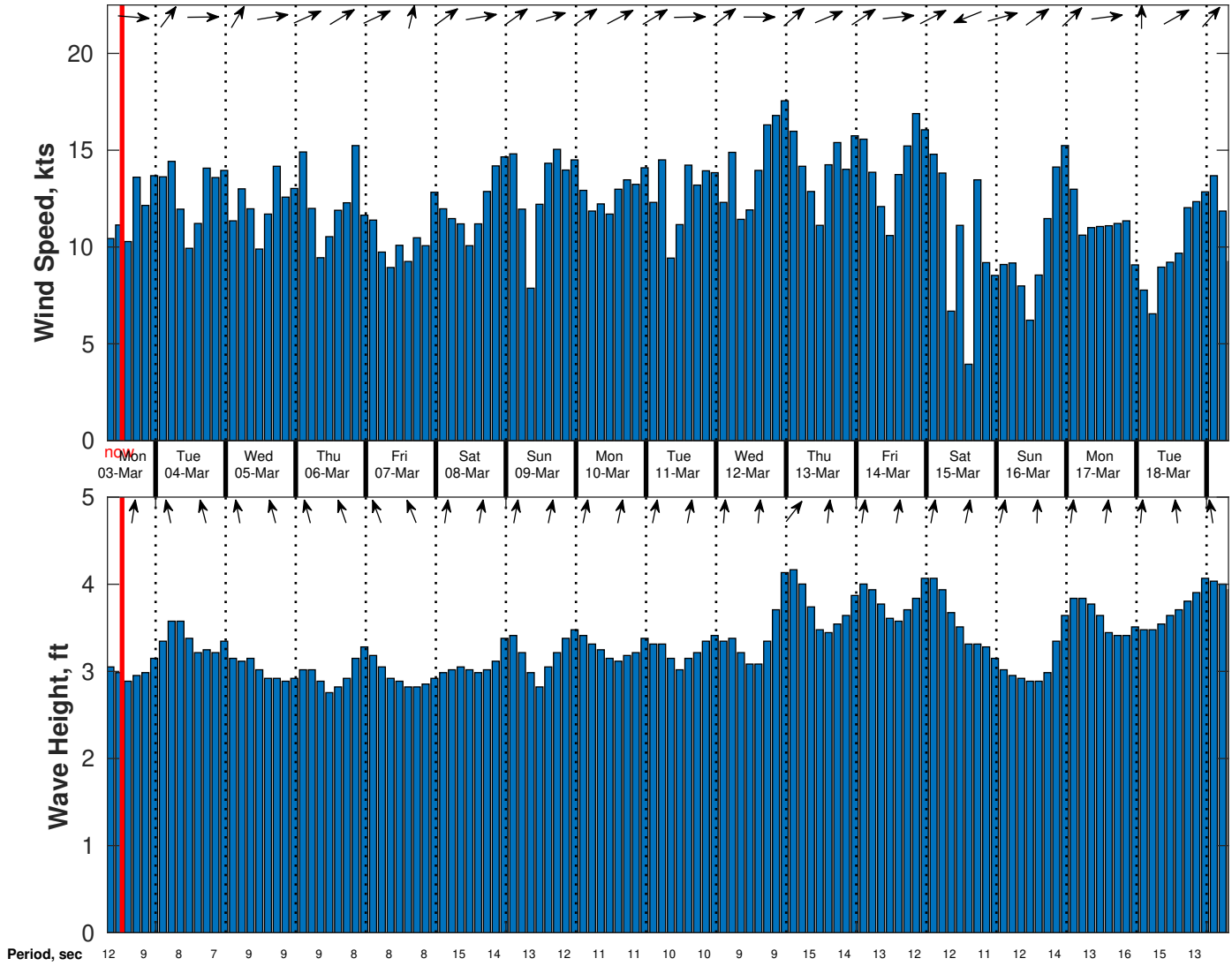
Friday

Winds: N, 10-15 kts.
Waves: N, 2-3 feet, 8-9 sec.
No currents available.

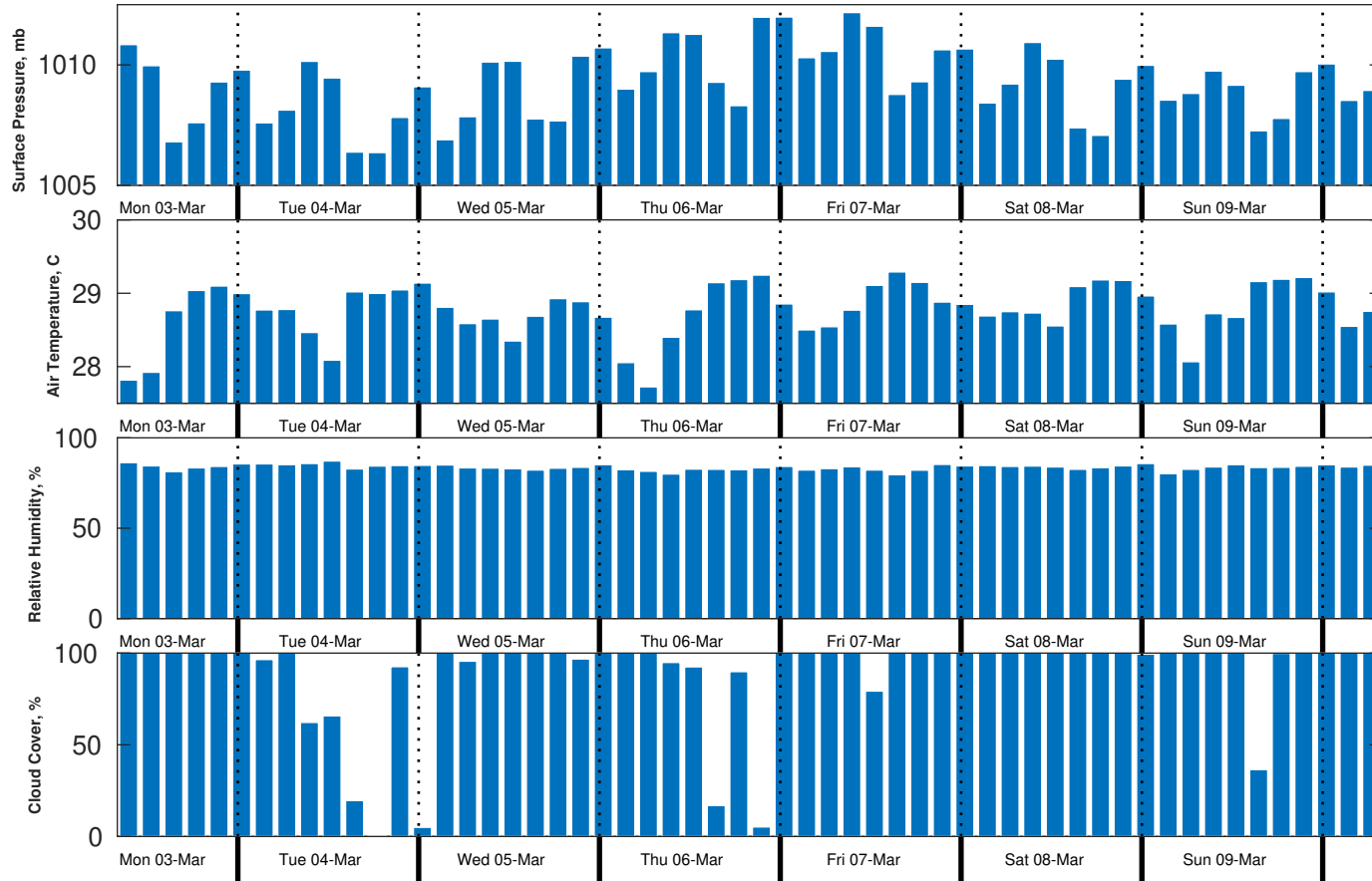
Friday Night

Winds: NW, 10-15 kts.
Waves: N, 3-4 feet, 15-16 sec.
No currents available.

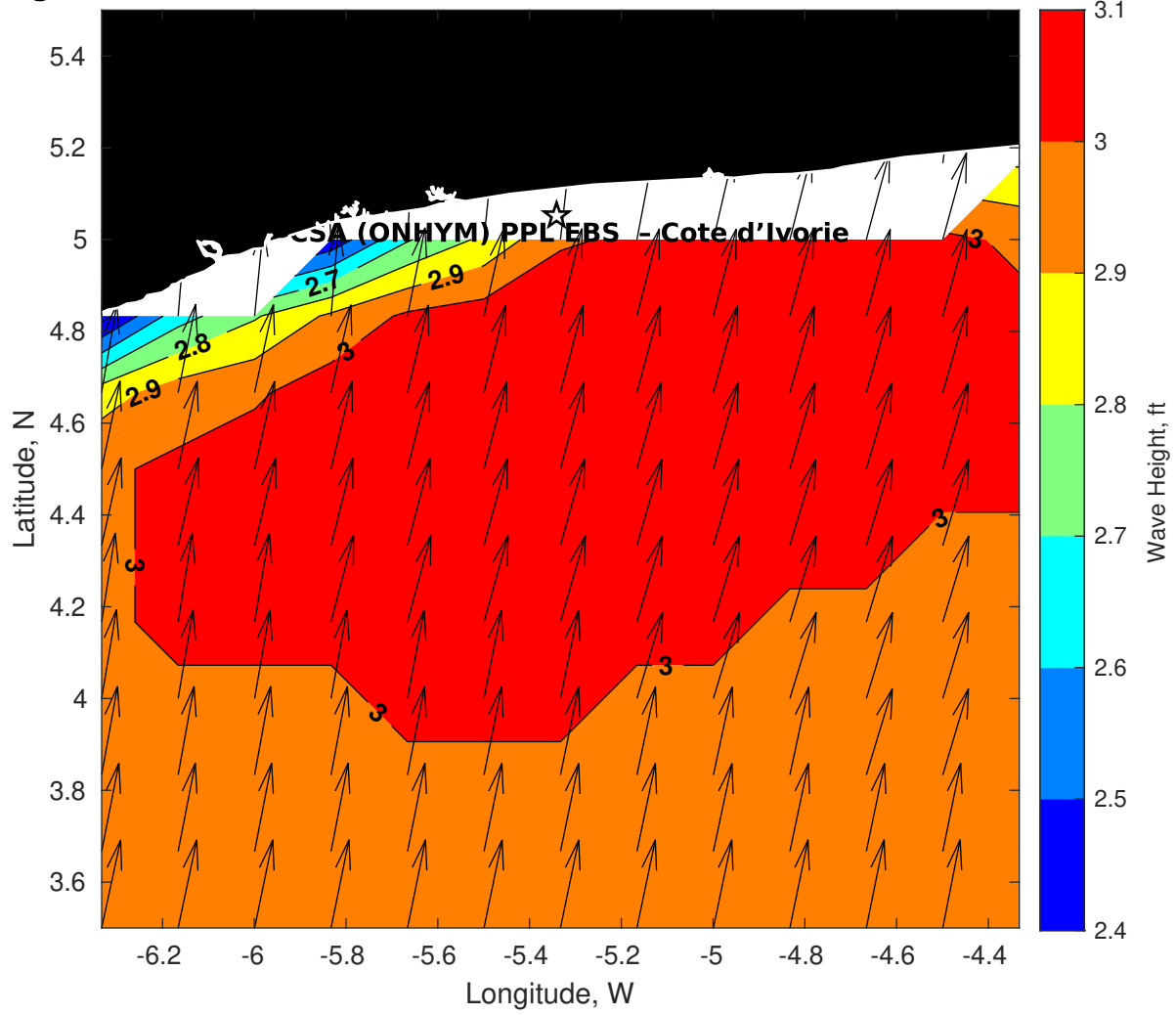
Wind & Wave Forecast for CSA (ONHYM) PPL EBS - Cote d'Ivoire from 03-Mar-2025 07:00:00 to 19-Mar-2025 07:00:00



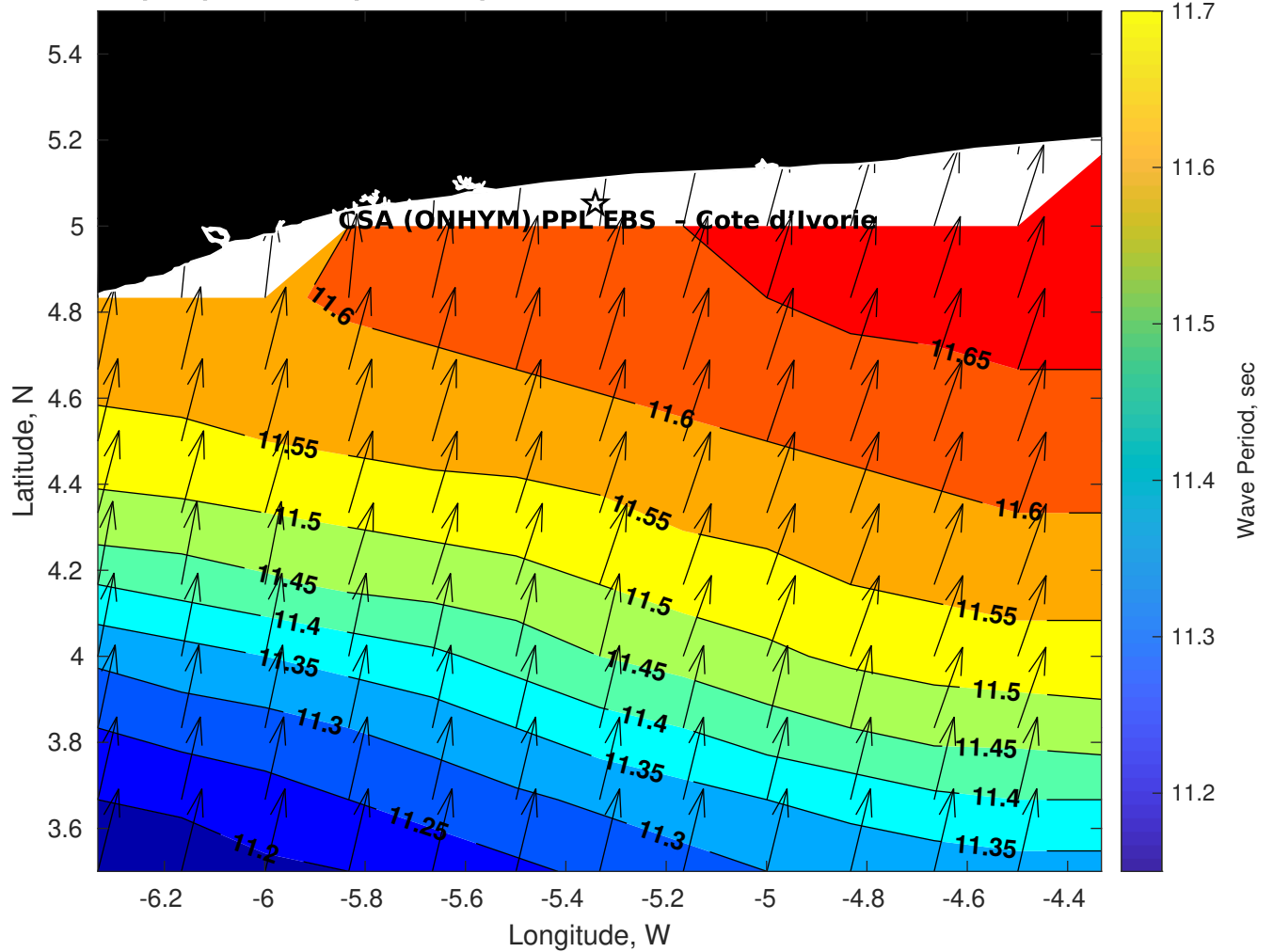
Met Forecast for CSA (ONHYM) PPL EBS - Cote d'Ivoire from 03-Mar-2025 06:00:00 to 10-Mar-2025 06:00:00



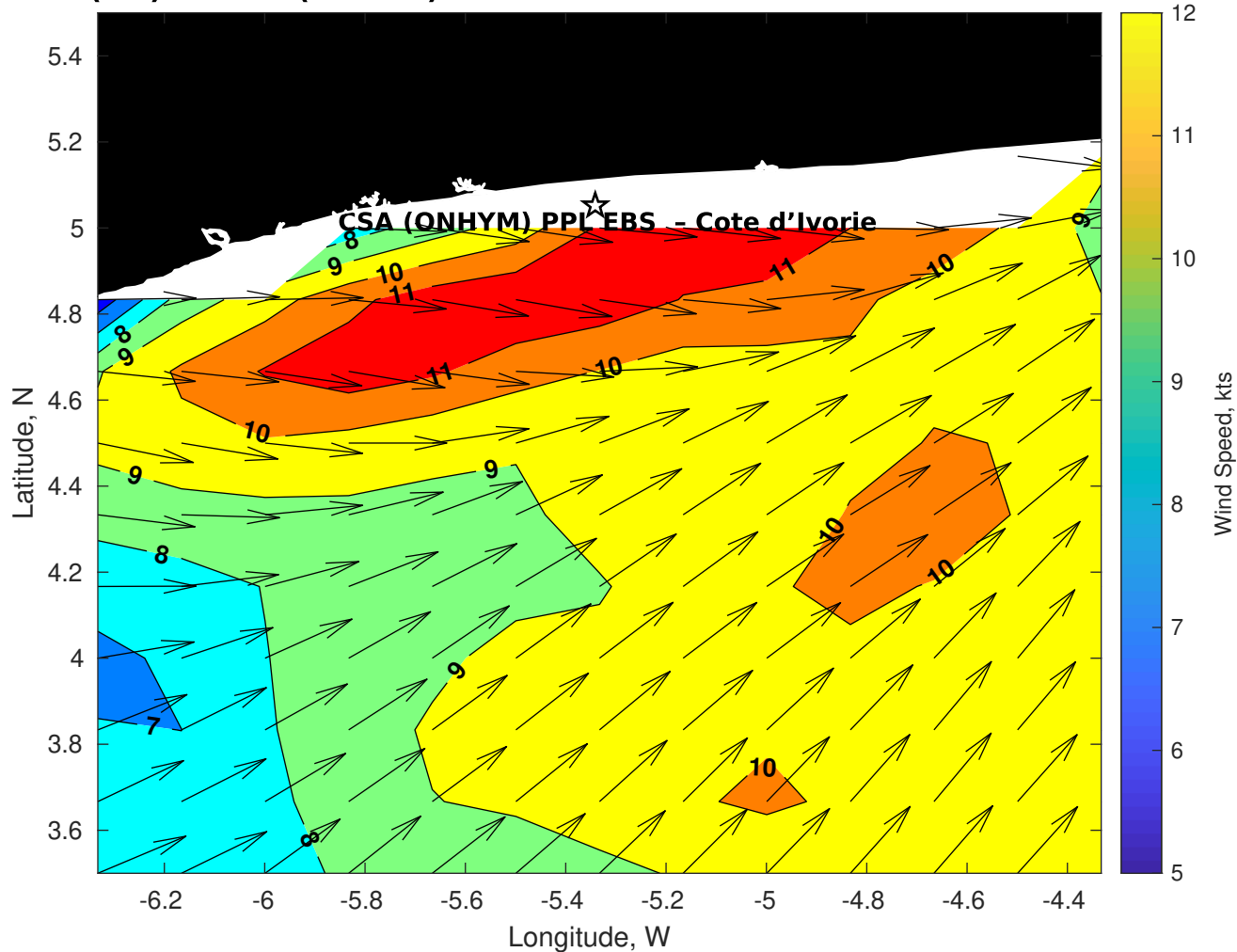
Wave Height (ft) for CSA (ONHYM) PPL EBS - Cote d'Ivoire at 03-Mar-2025 09:00:00



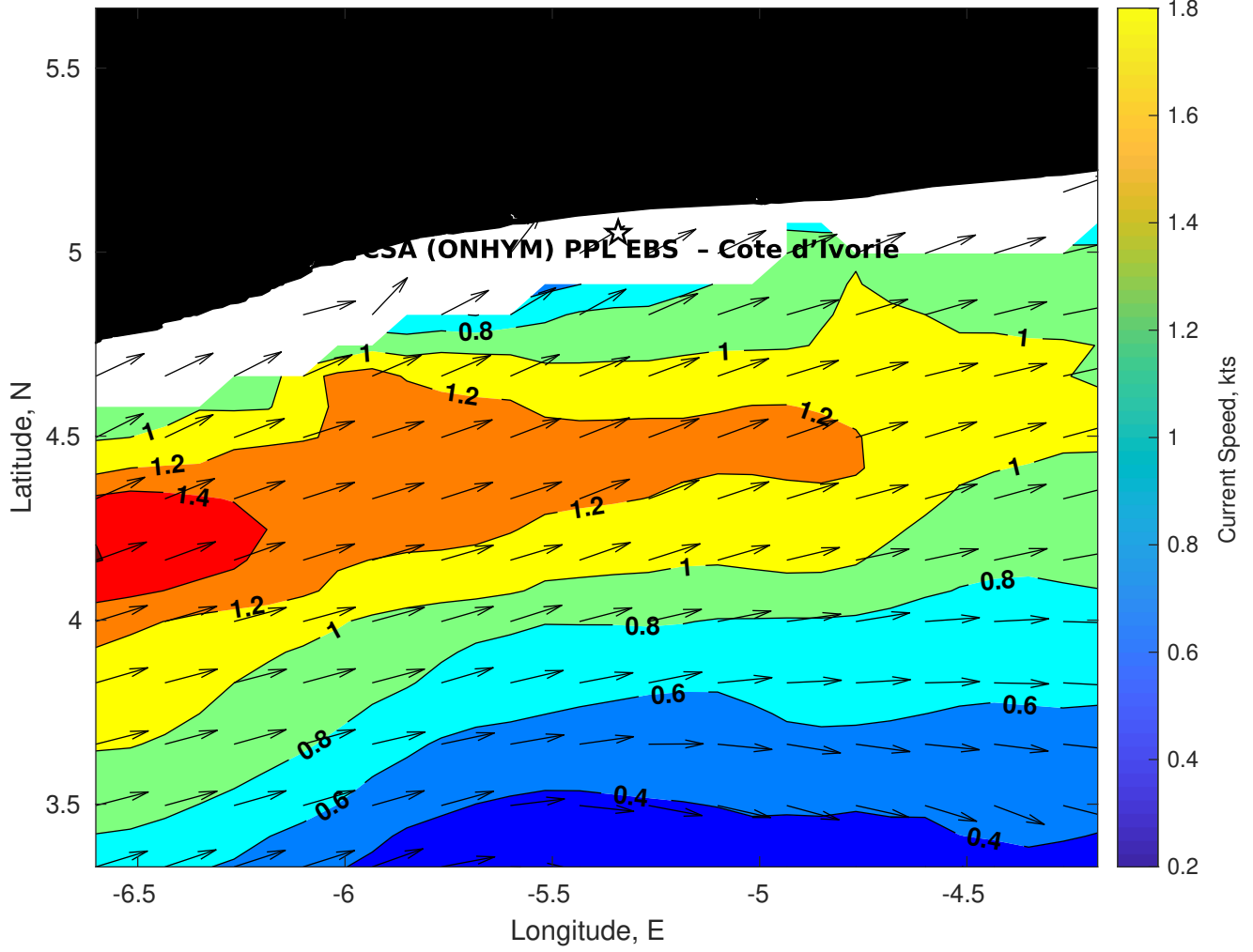
Wave Period (sec) for CSA (ONHYM) PPL EBS - Cote d'Ivoire at 03-Mar-2025 09:00:00



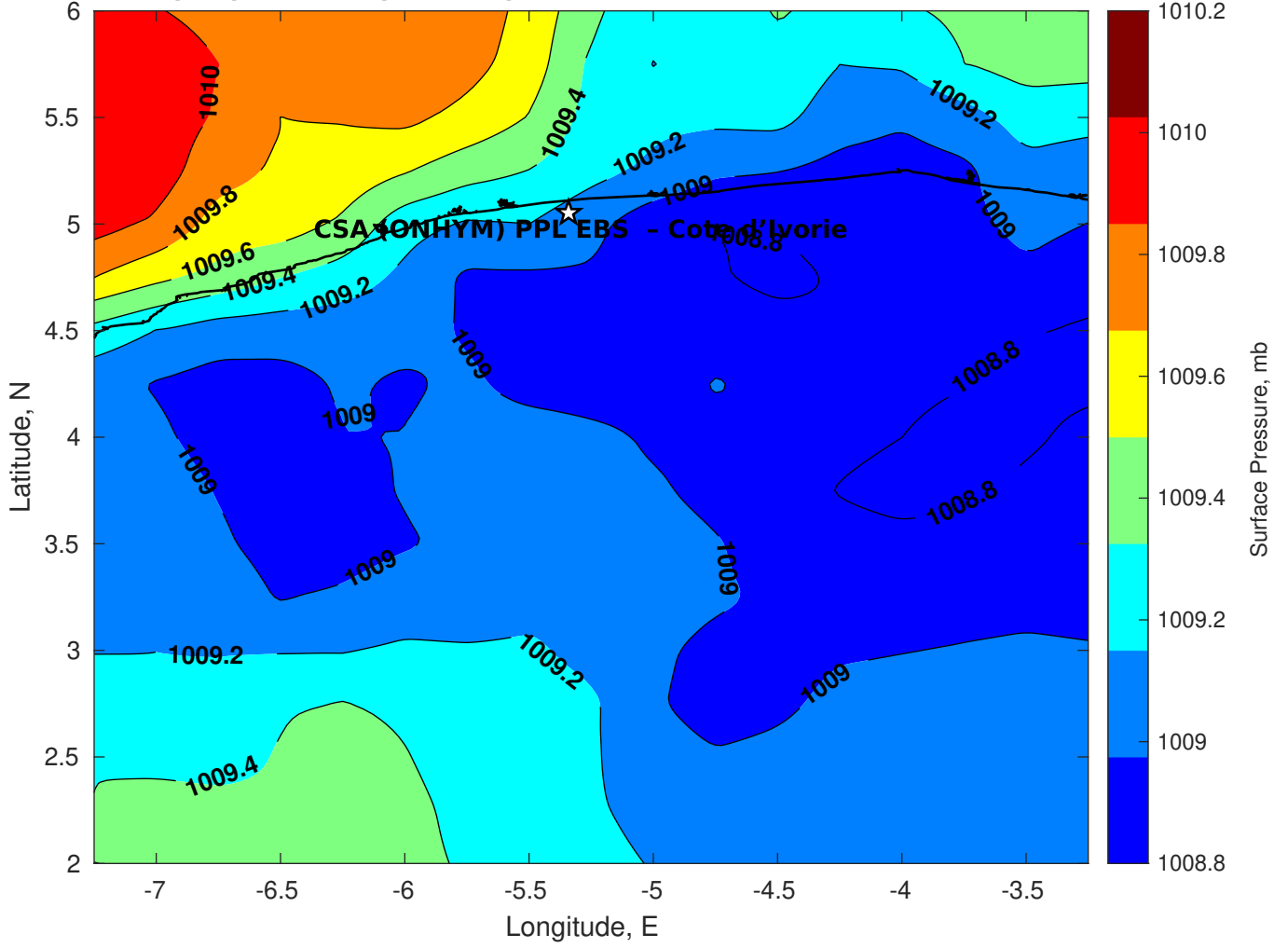
Winds (kts) for CSA (ONHYM) PPL EBS - Cote d'Ivoire at 03-Mar-2025 09:00:00



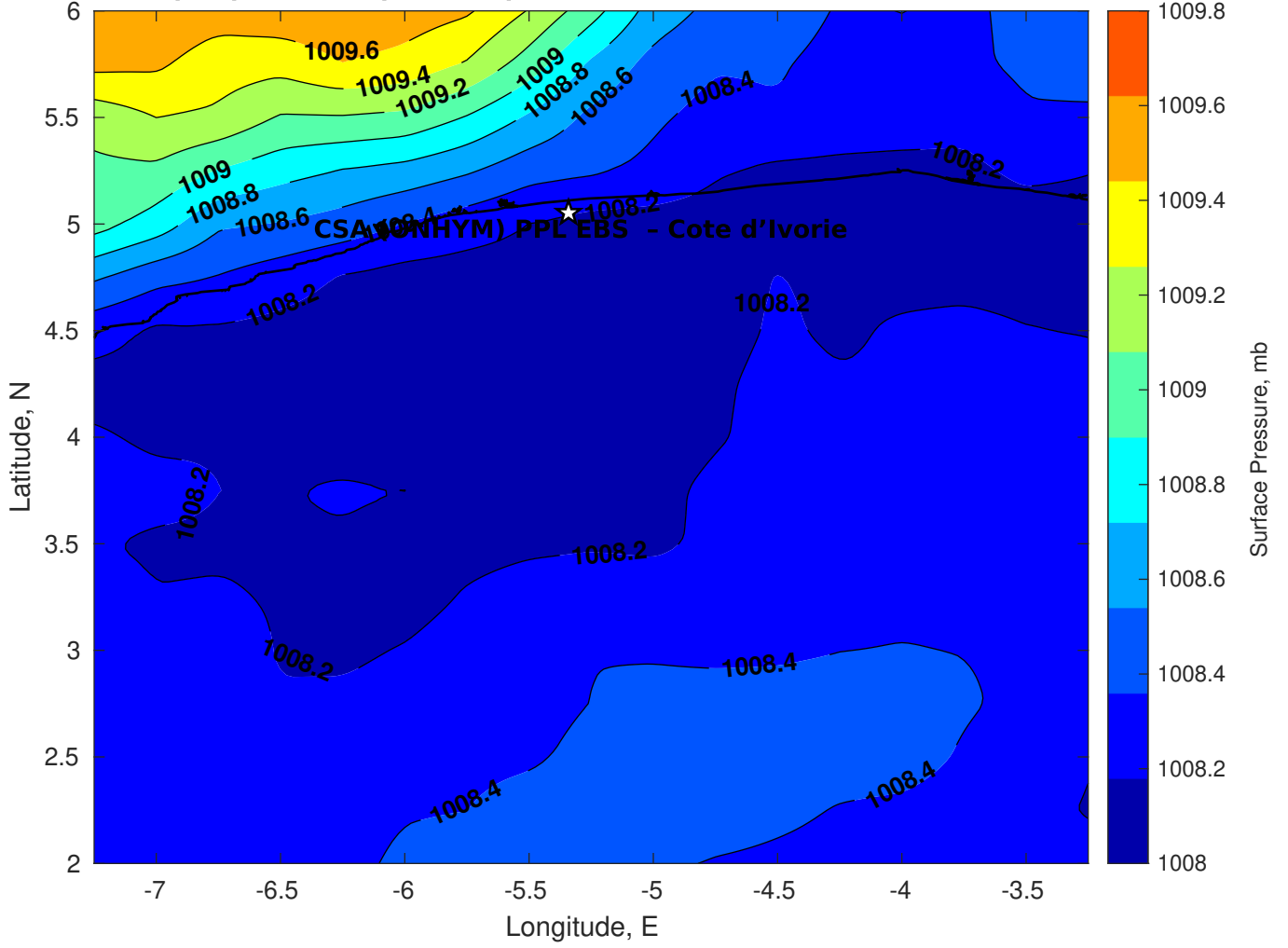
Surface Currents for CSA (ONHYM) PPL EBS - Cote d'Ivoire at 02-Mar-2025 00:00:00



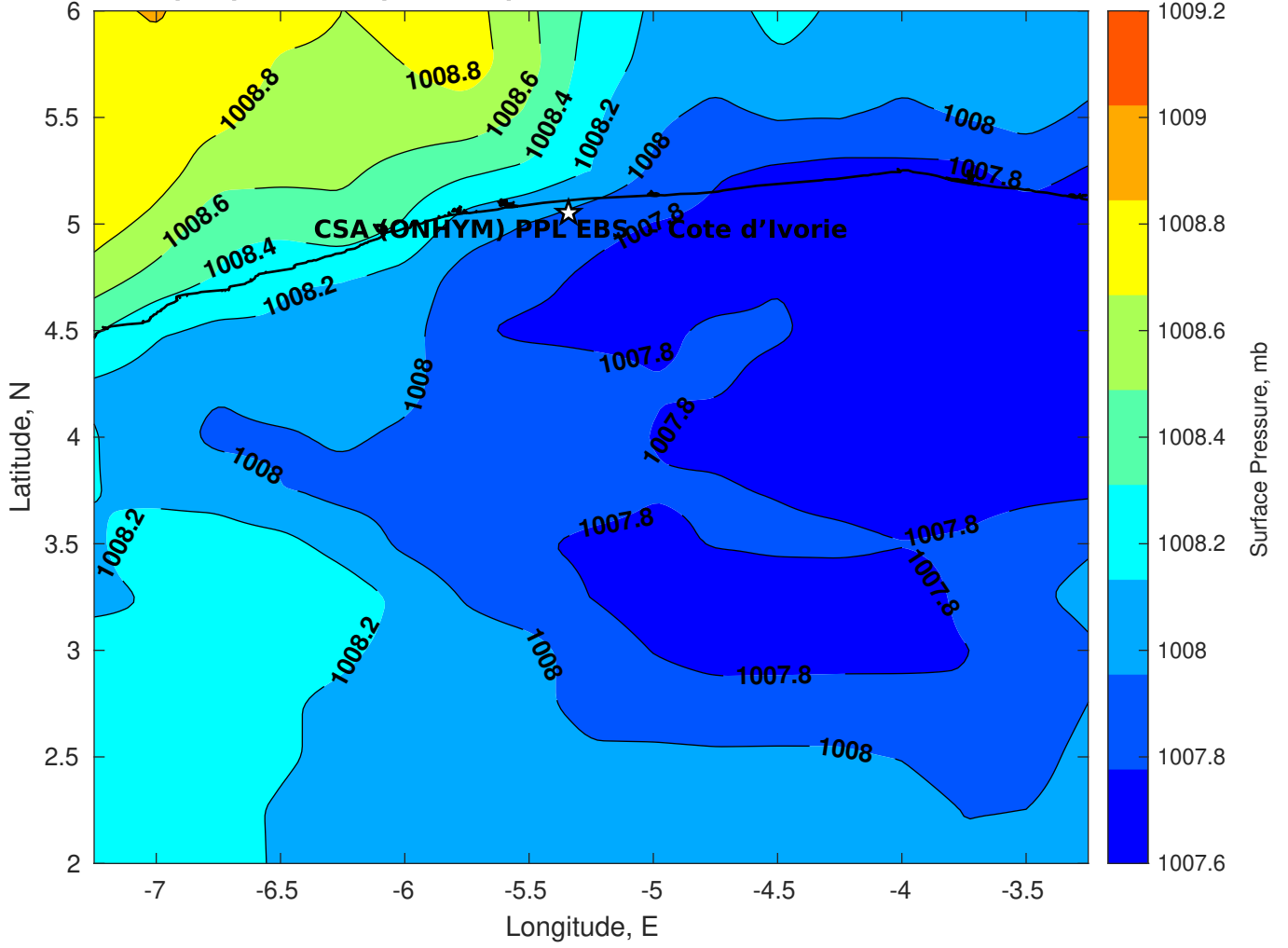
Surface Pressure (mb) for CSA (ONHYM) PPL EBS - Cote d'Ivoire at 03-Mar-2025 06:00:00



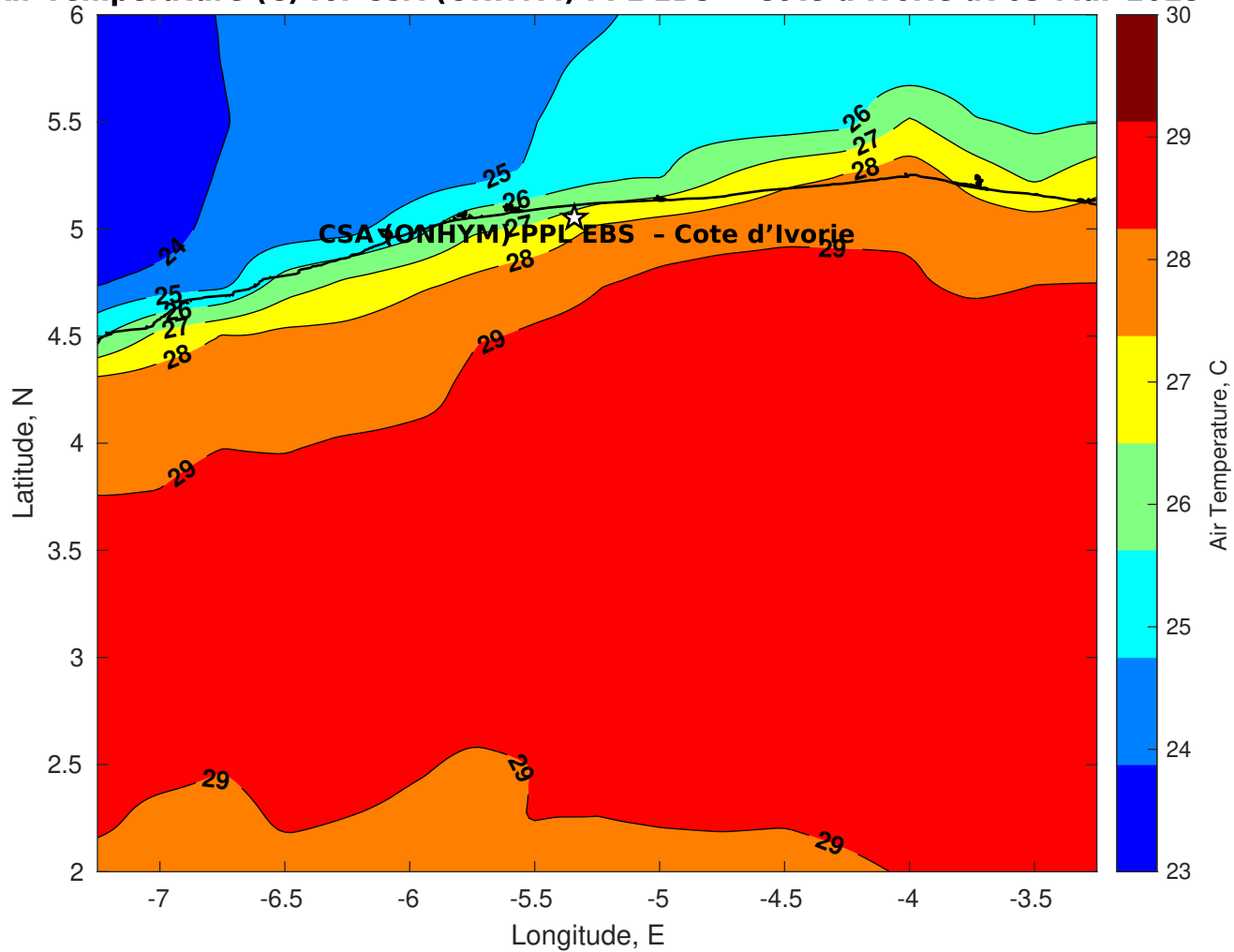
Surface Pressure (mb) for CSA (ONHYM) PPL EBS - Cote d'Ivoire at 04-Mar-2025 06:00:00



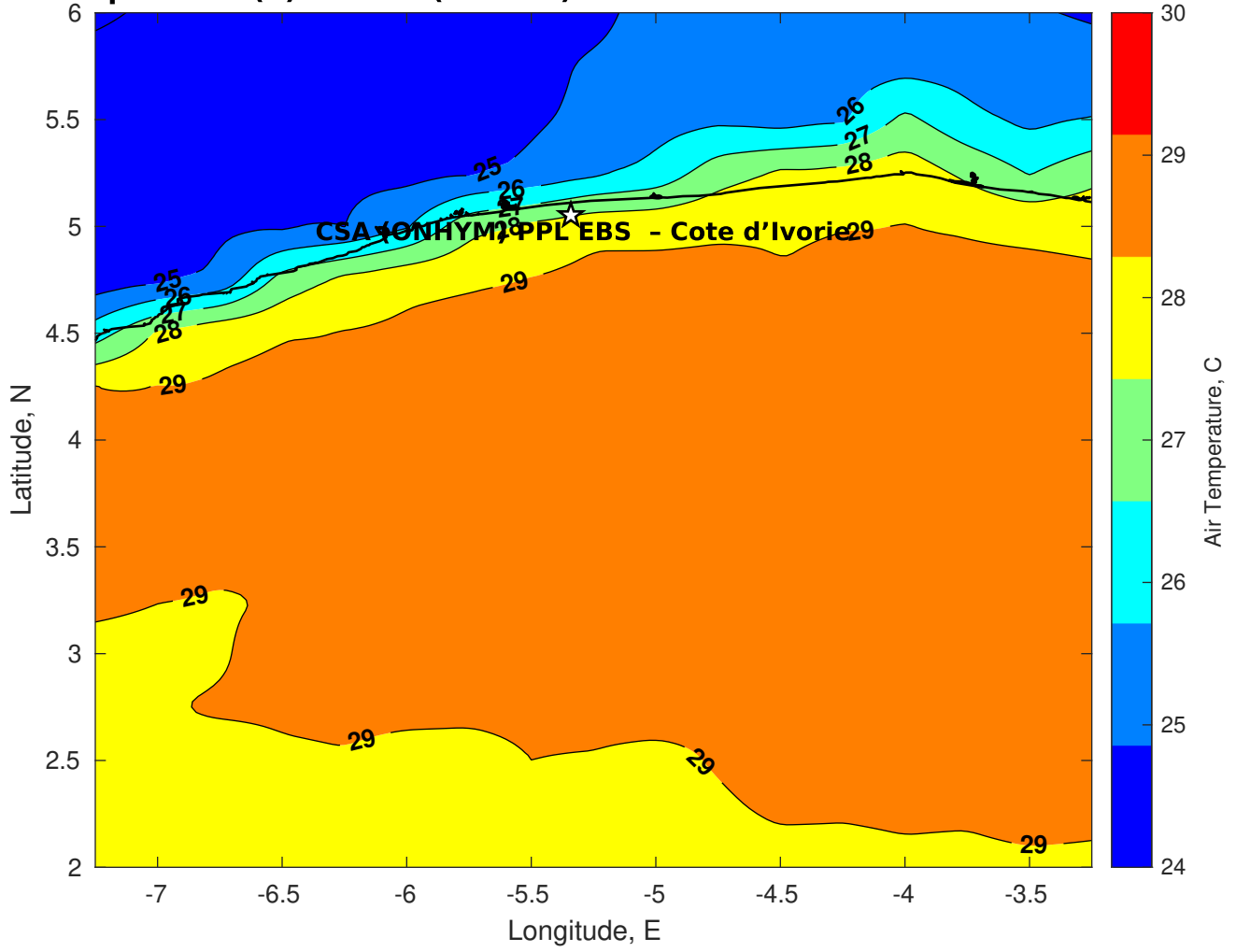
Surface Pressure (mb) for CSA (ONHYM) PPL EBS - Cote d'Ivoire at 05-Mar-2025 06:00:00



Air Temperature (C) for CSA (ONHYM) PPL EBS - Cote d'Ivoire at 03-Mar-2025



Air Temperature (C) for CSA (ONHYM) PPL EBS - Cote d'Ivoire at 03-Mar-2025



Air Temperature (C) for CSA (ONHYM) PPL EBS - Cote d'Ivoire at 03-Mar-2025

