

\*\*\*\*\*

Marine Weather Forecast for CSA (ONHYM) PPL EBS - Senegal

Forecast valid as of 03-Mar-2025 0900 GMT

\*\*\*\*\*

All times are local.

Today

Winds: N, 10-15 kts.

Waves: N, 4-5 feet, 10-11 sec.

No currents available.

Tonight

Winds: N, 10-15 kts.

Waves: N, 4-5 feet, 9-10 sec.

No currents available.

Tuesday

Winds: N, 10-15 kts.

Waves: N, 4-5 feet, 12-13 sec.

No currents available.

Tuesday Night

Winds: N, 10-15 kts.

Waves: NW, 5-6 feet, 11-12 sec.

No currents available.

Wednesday

Winds: N, 10-15 kts.

Waves: N, 5-6 feet, 10-11 sec.

No currents available.

Wednesday Night

Winds: N, 15-20 kts.

Waves: N, 5-6 feet, 10-11 sec.

No currents available.

Thursday

Winds: N, 15-20 kts.

Waves: N, 5-6 feet, 10-11 sec.

No currents available.

Thursday Night

Winds: N, 15-20 kts.

Waves: N, 5-6 feet, 6-7 sec.

No currents available.

Friday

Winds: NE, 15-20 kts.

Waves: N, 5-6 feet, 6-7 sec.

No currents available.

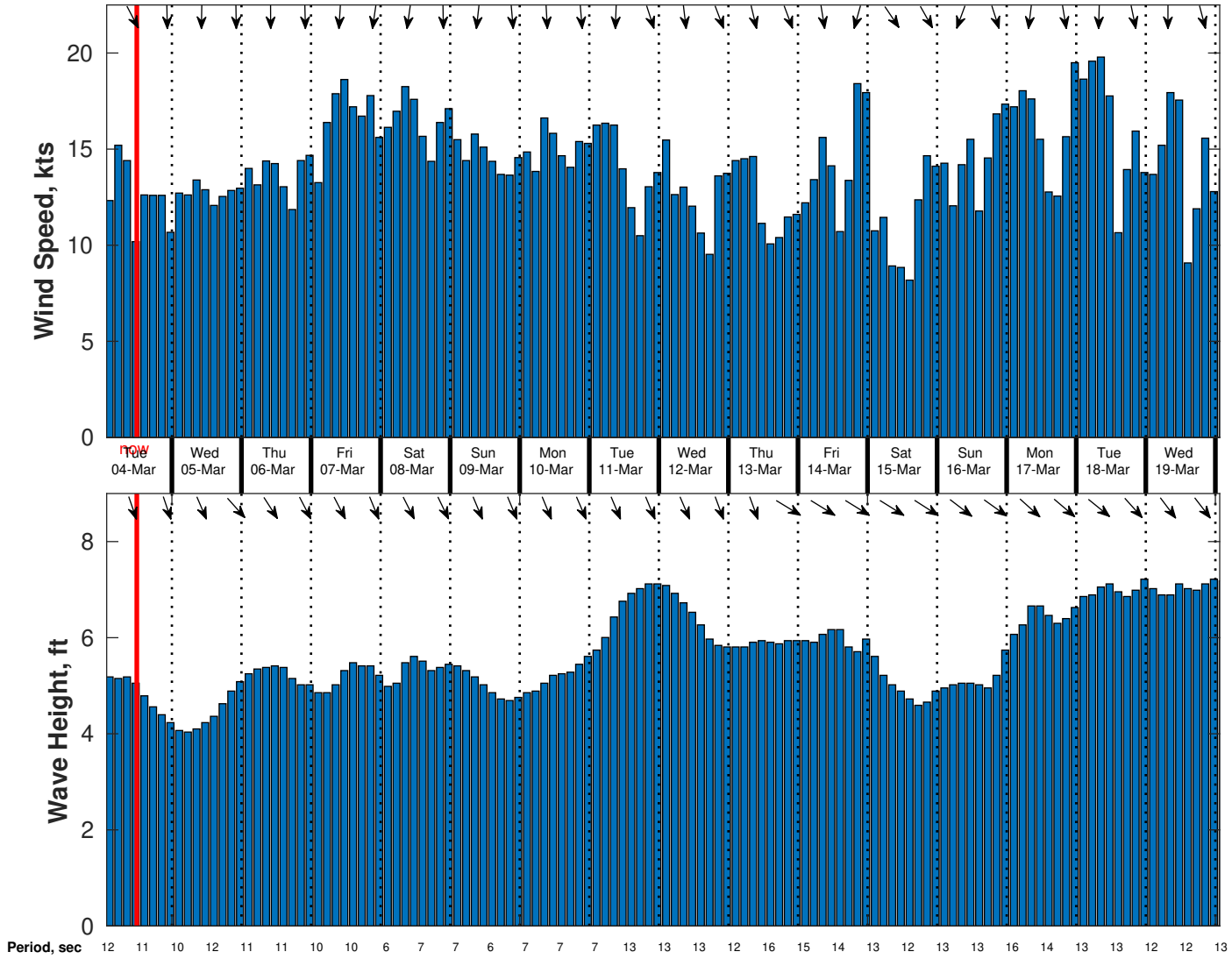
Friday Night

Winds: N, 15-20 kts.

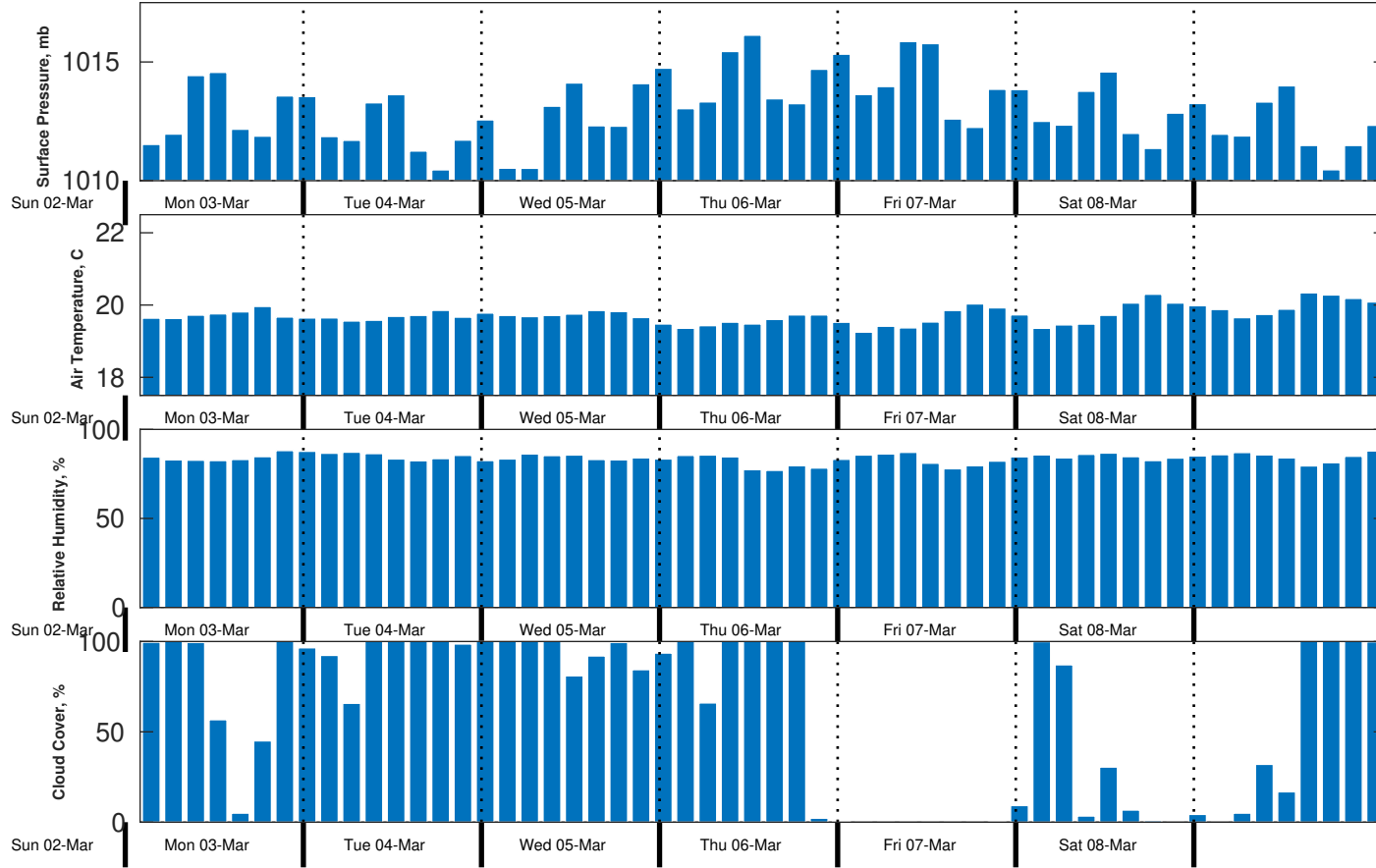
Waves: N, 5-6 feet, 6-7 sec.

No currents available.

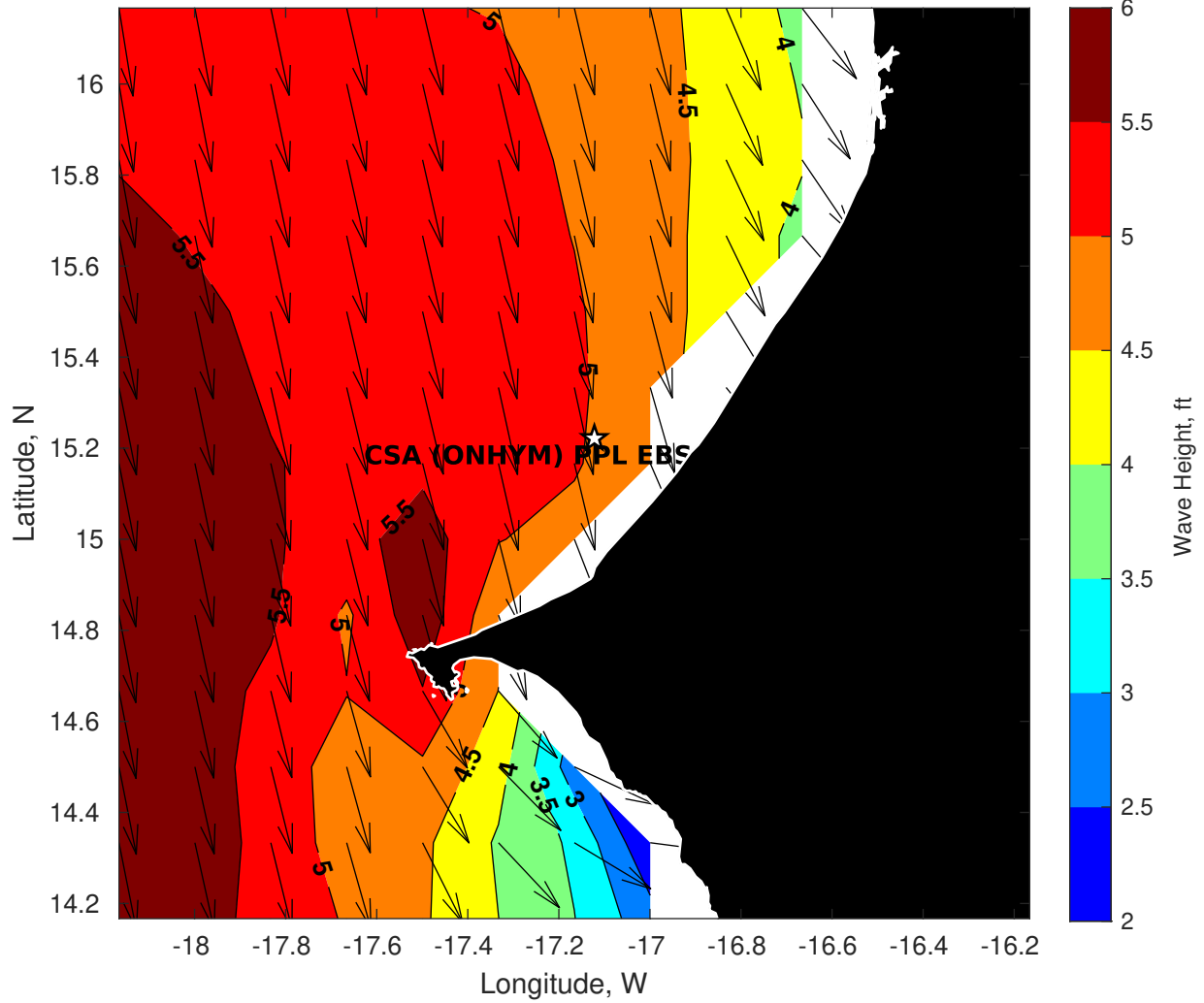
**Wind & Wave Forecast for CSA (ONHYM) PPL EBS - Senegal from 03-Mar-2025 01:00:00 to 19-Mar-2025 01:00:00**



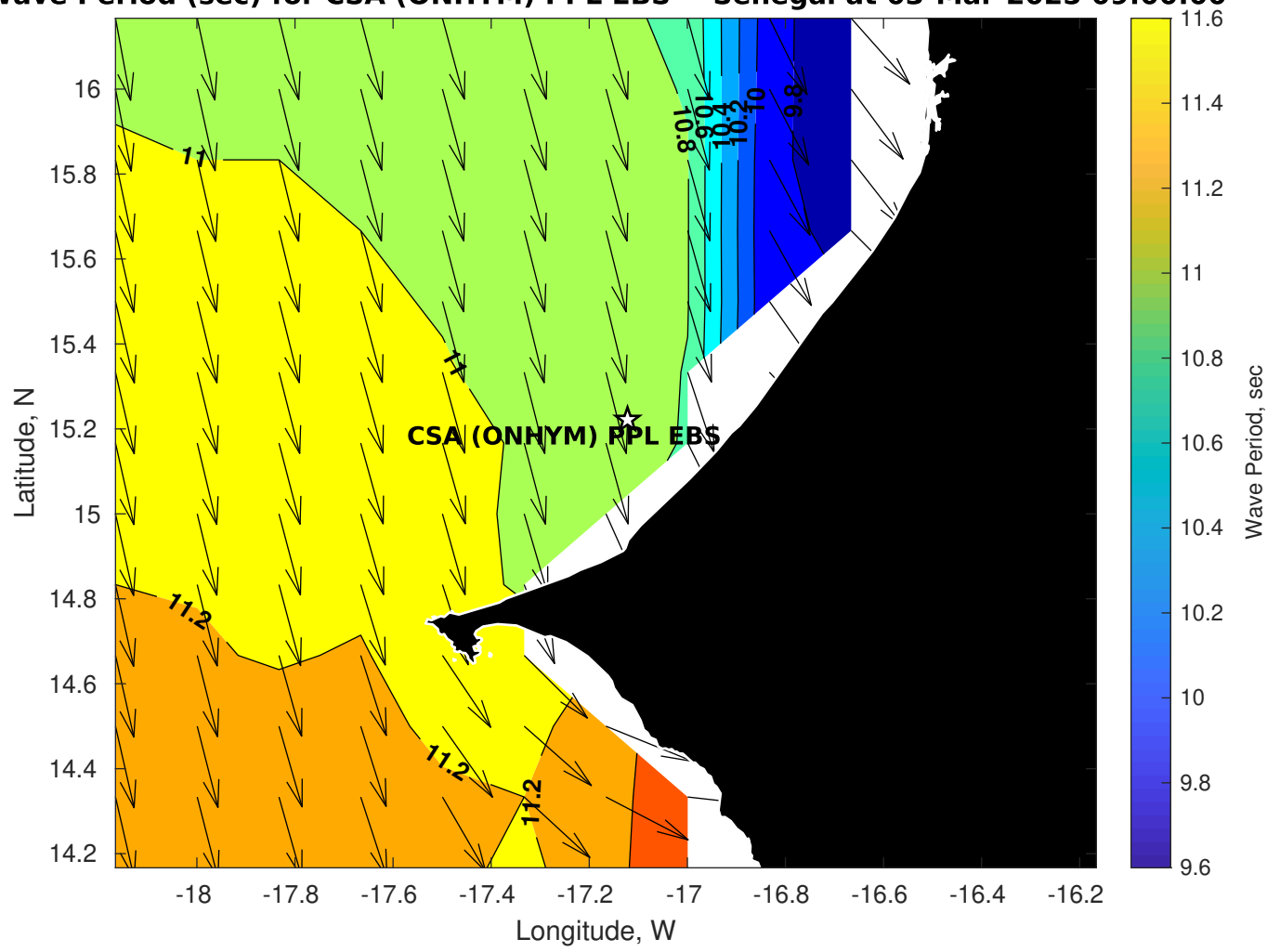
**Met Forecast for CSA (ONHYM) PPL EBS - Senegal from 03-Mar-2025 00:00:00 to 10-Mar-2025 00:00:00**



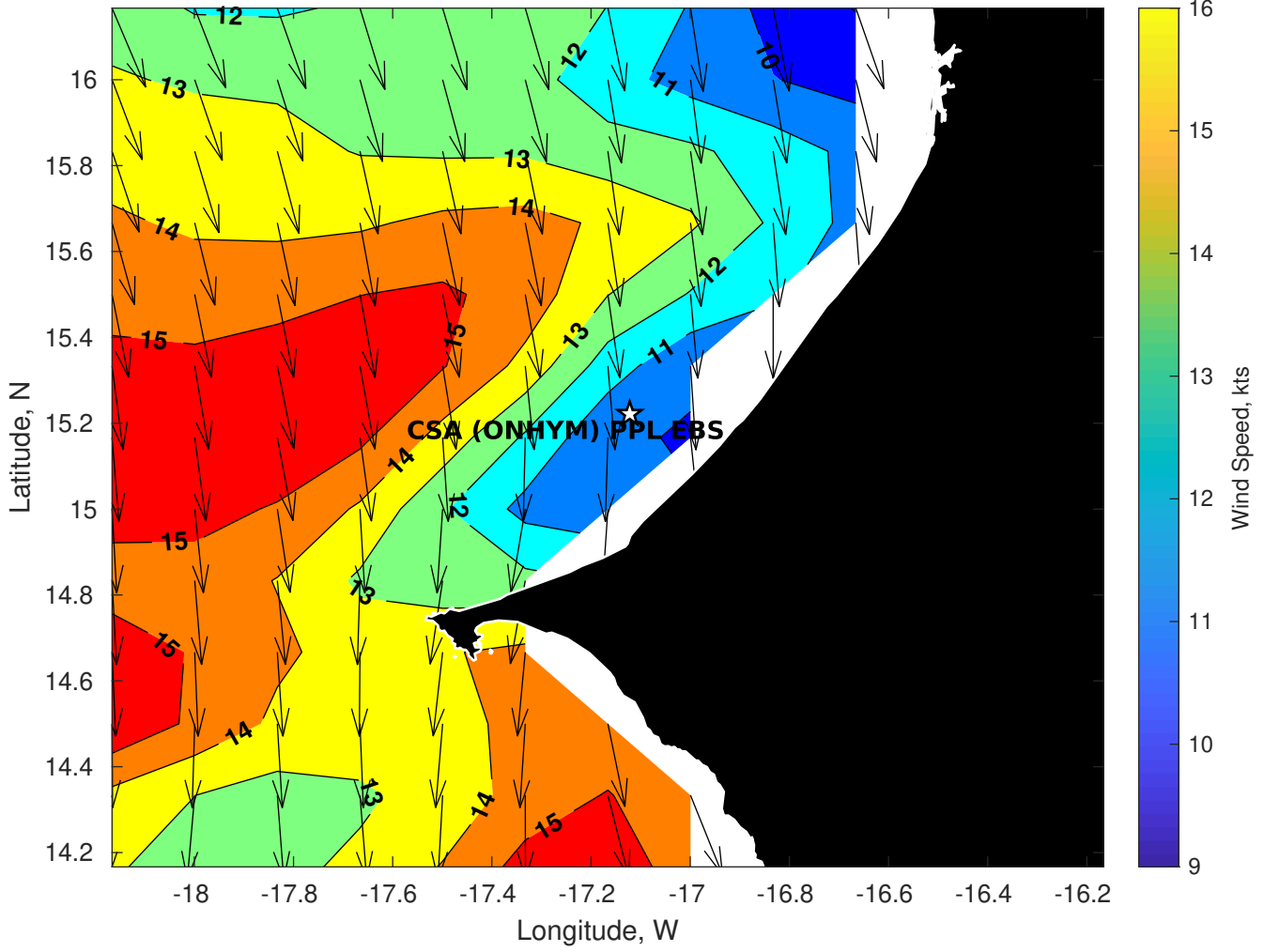
**Wave Height (ft) for CSA (ONHYM) PPL EBS - Senegal at 03-Mar-2025 09:00:00**



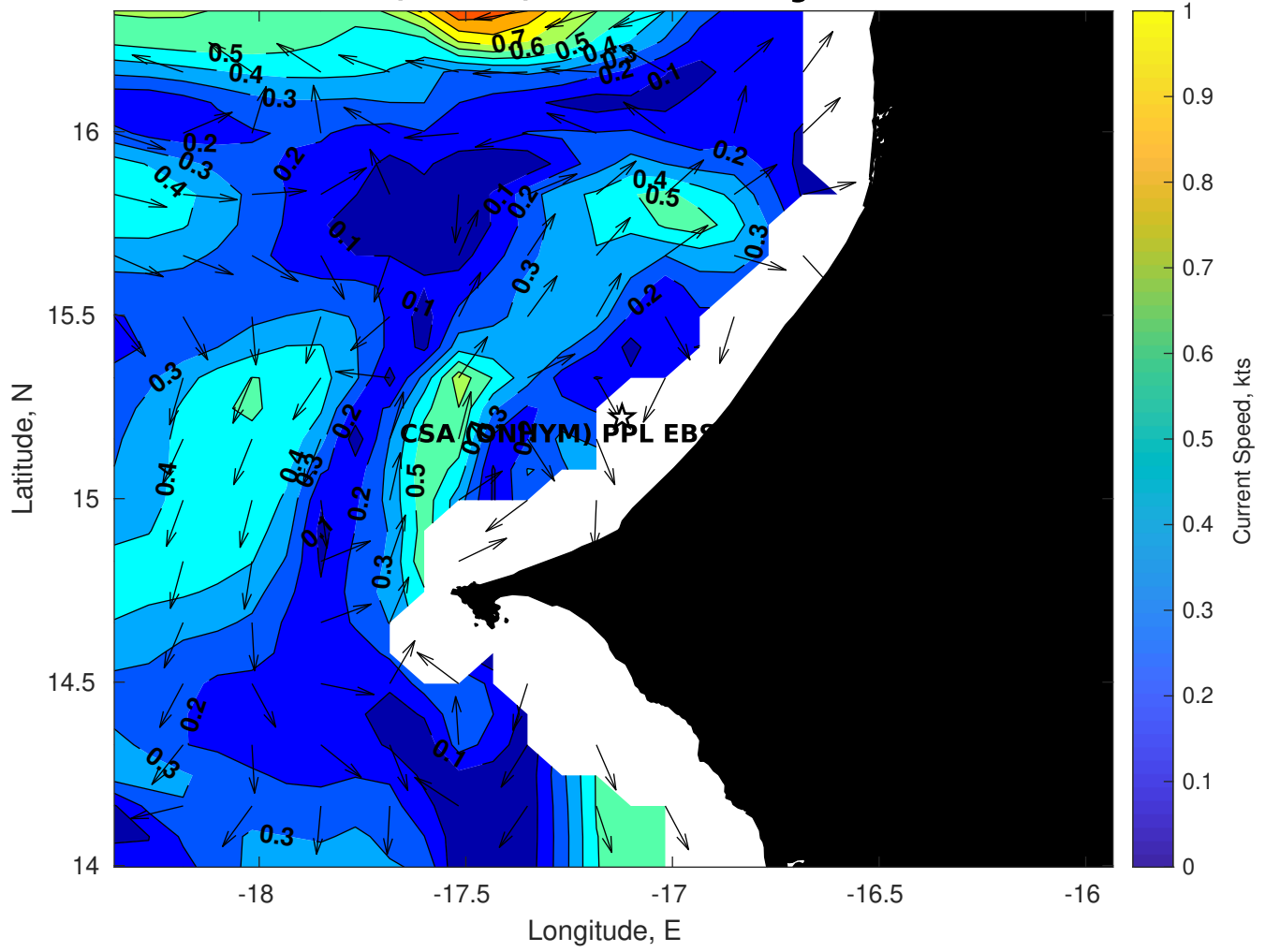
### Wave Period (sec) for CSA (ONHYM) PPL EBS - Senegal at 03-Mar-2025 09:00:00



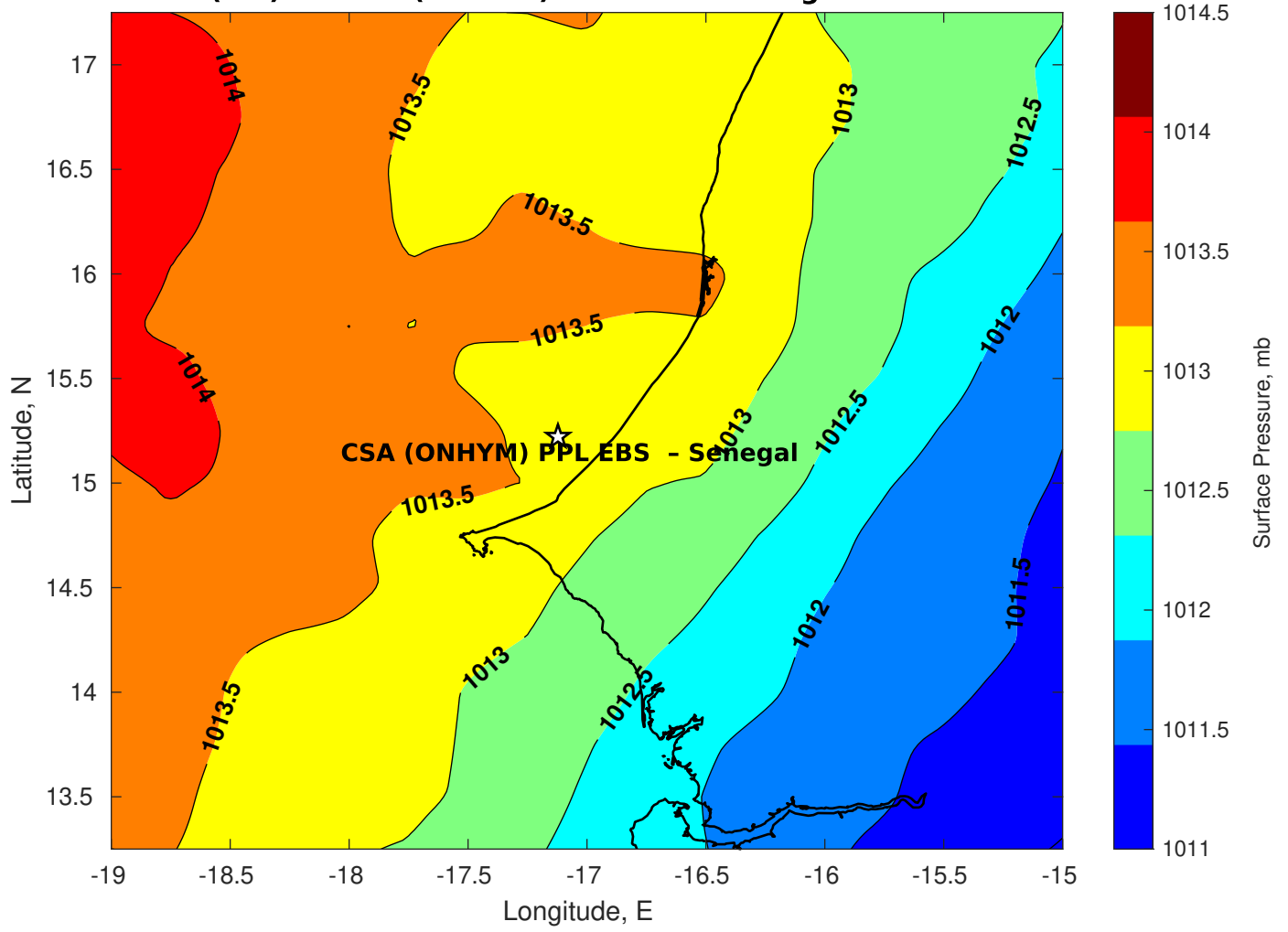
**Winds (kts) for CSA (ONHYM) PPL EBS - Senegal at 03-Mar-2025 09:00:00**



**Surface Currents for CSA (ONHYM) PPL EBS - Senegal at 02-Mar-2025 00:00:00**

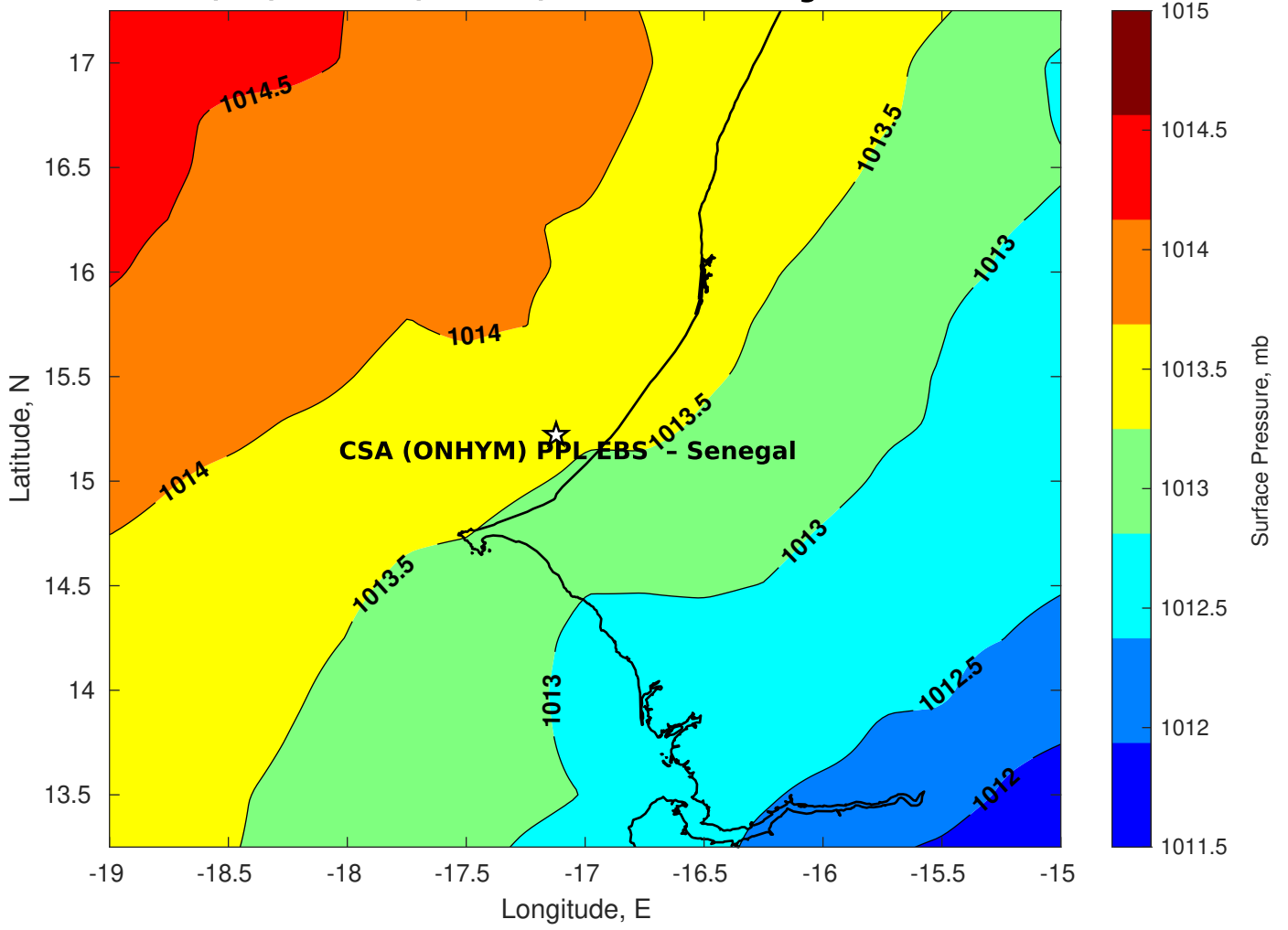


Surface Pressure (mb) for CSA (ONHYM) PPL EBS - Senegal at 03-Mar-2025 00:00:00

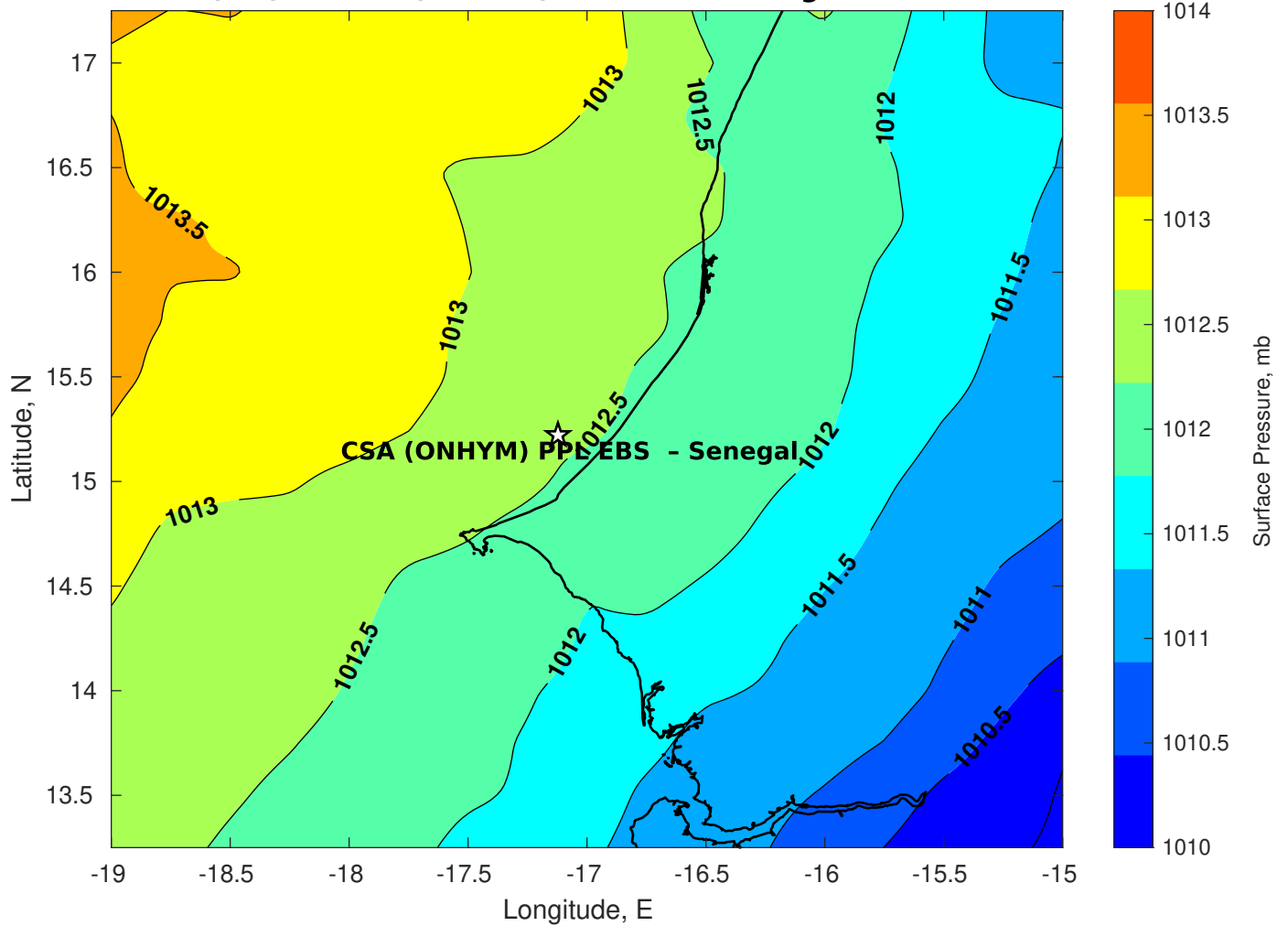




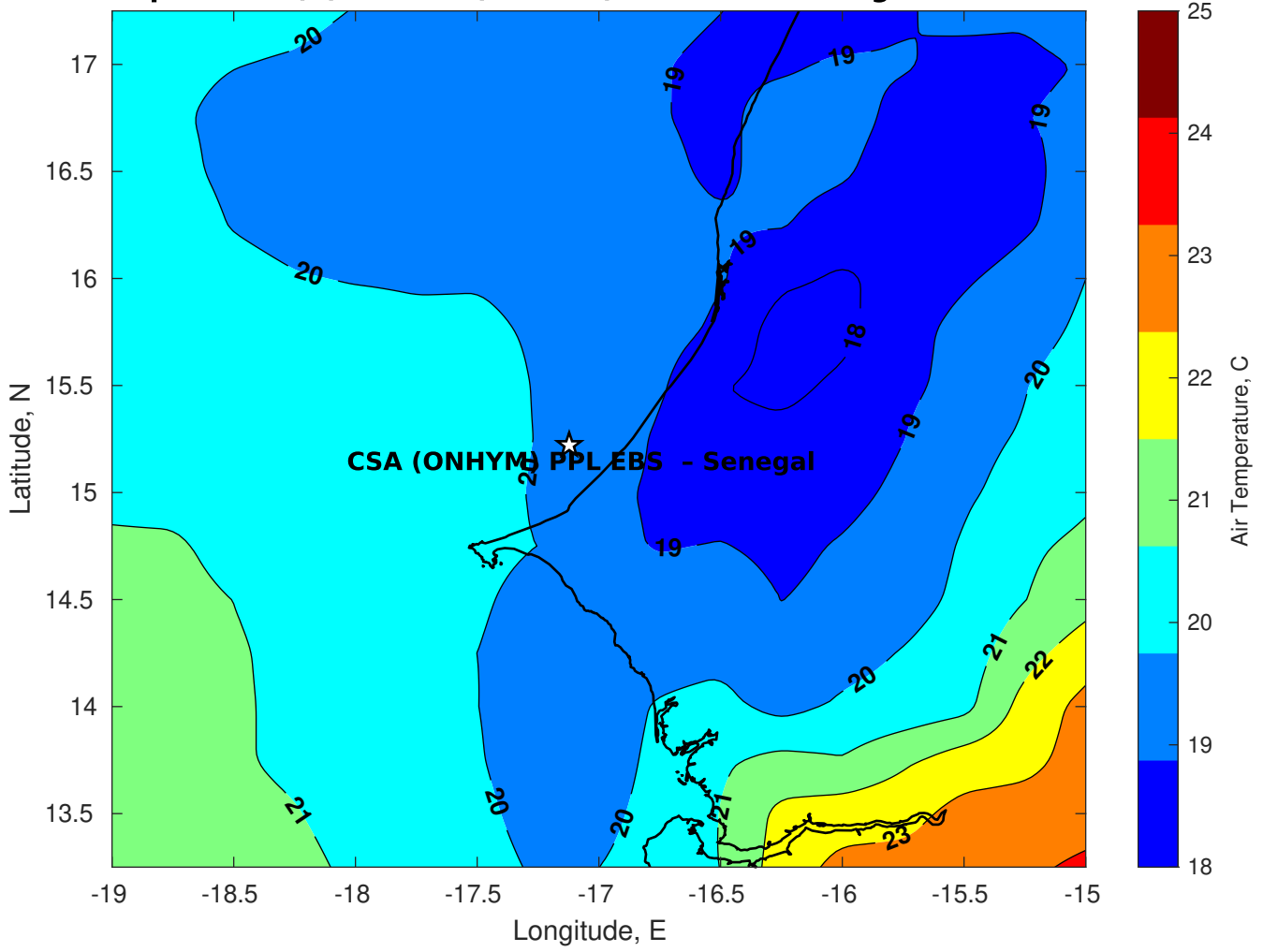
**Surface Pressure (mb) for CSA (ONHYM) PPL EBS - Senegal at 04-Mar-2025 00:00:00**



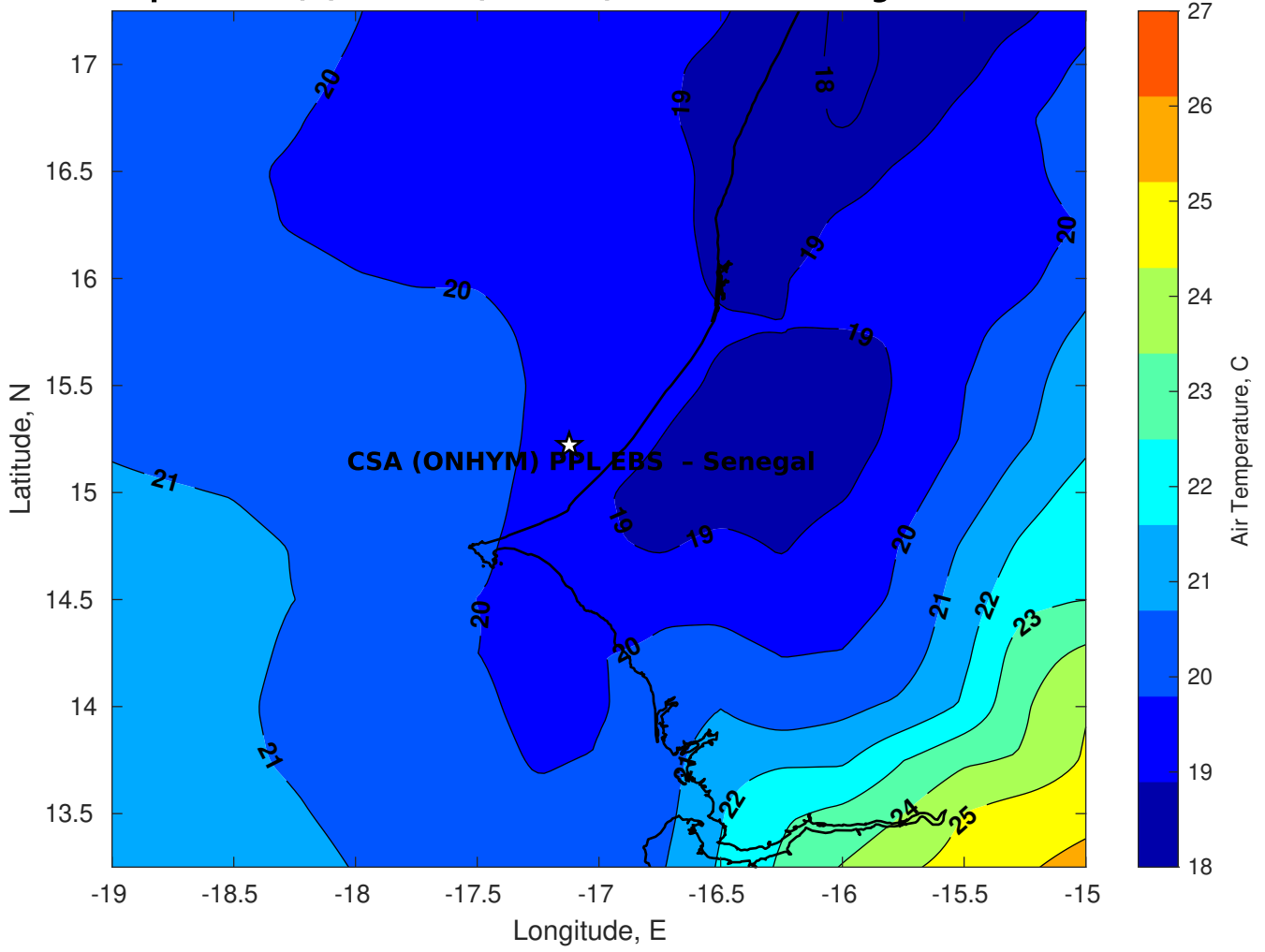
Surface Pressure (mb) for CSA (ONHYM) PPL EBS - Senegal at 05-Mar-2025 00:00:00



**Air Temperature (C) for CSA (ONHYM) PPL EBS - Senegal at 03-Mar-2025**



**Air Temperature (C) for CSA (ONHYM) PPL EBS - Senegal at 03-Mar-2025**



**Air Temperature (C) for CSA (ONHYM) PPL EBS - Senegal at 03-Mar-2025**

