

\*\*\*\*\*

Marine Weather Forecast for CSA (ONHYM) PPL EBS – Sierra Leone  
Forecast valid as of 03-Mar-2025 0900 GMT

\*\*\*\*\*

All times are local.

Today

Winds: NW, 10-15 kts.  
Waves: N, 1-2 feet, 11-12 sec.  
No currents available.

Tonight

Winds: NW, 10-15 kts.  
Waves: N, 2-3 feet, 8-9 sec.  
No currents available.

Tuesday

Winds: NW, 10-15 kts.  
Waves: N, 2-3 feet, 8-9 sec.  
No currents available.

Tuesday Night

Winds: NW, 10-15 kts.  
Waves: W, 2-3 feet, 3-4 sec.  
No currents available.

Wednesday

Winds: NW, 10-15 kts.  
Waves: W, 2-3 feet, 4-5 sec.  
No currents available.

Wednesday Night

Winds: NW, 10-15 kts.  
Waves: W, 2-3 feet, 3-4 sec.  
No currents available.

Thursday

Winds: NW, 10-15 kts.  
Waves: W, 2-3 feet, 5-6 sec.  
No currents available.

Thursday Night

Winds: NW, 10-15 kts.  
Waves: W, 2-3 feet, 6-7 sec.  
No currents available.

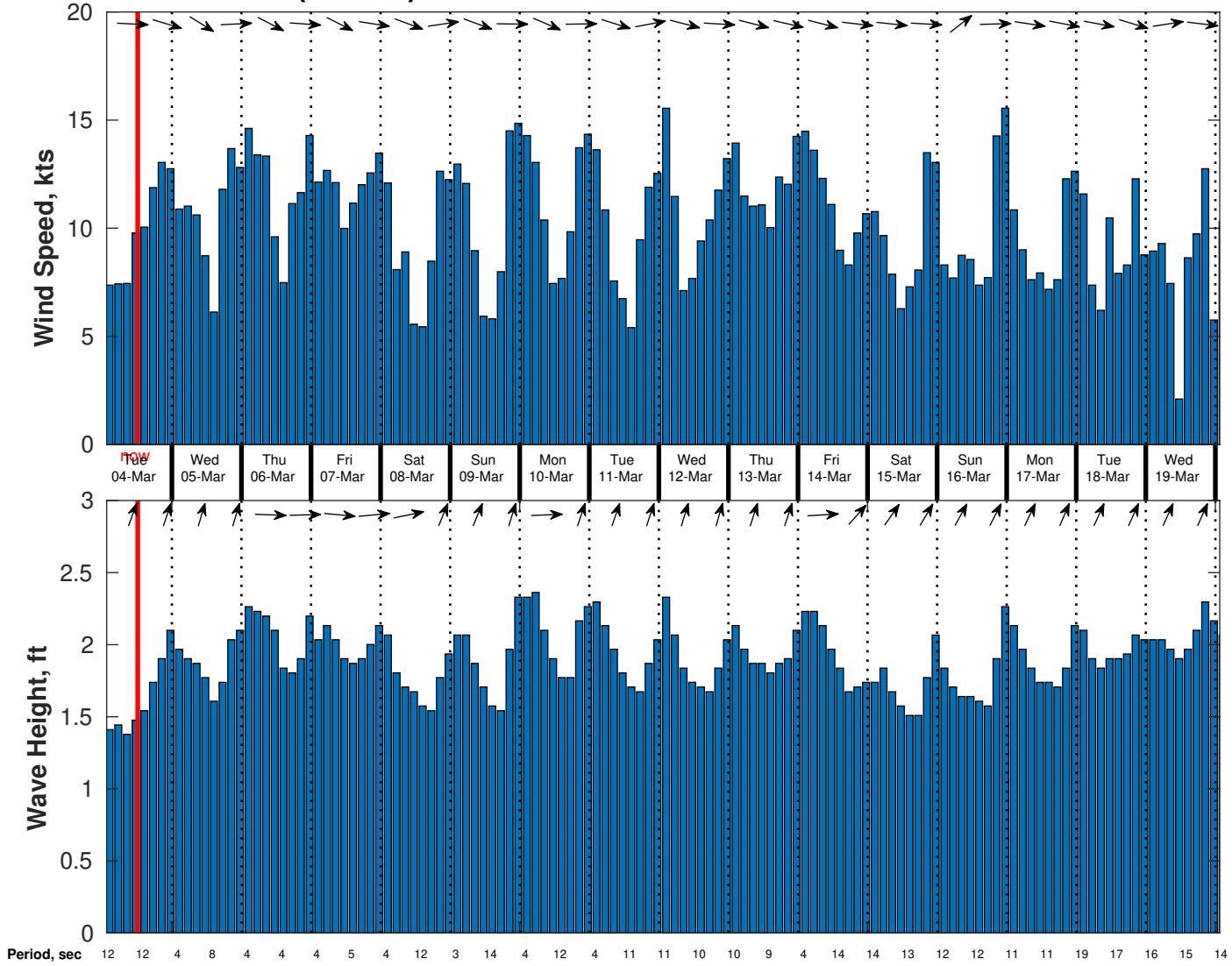
Friday

Winds: NW, 10-15 kts.  
Waves: N, 1-2 feet, 12-13 sec.  
No currents available.

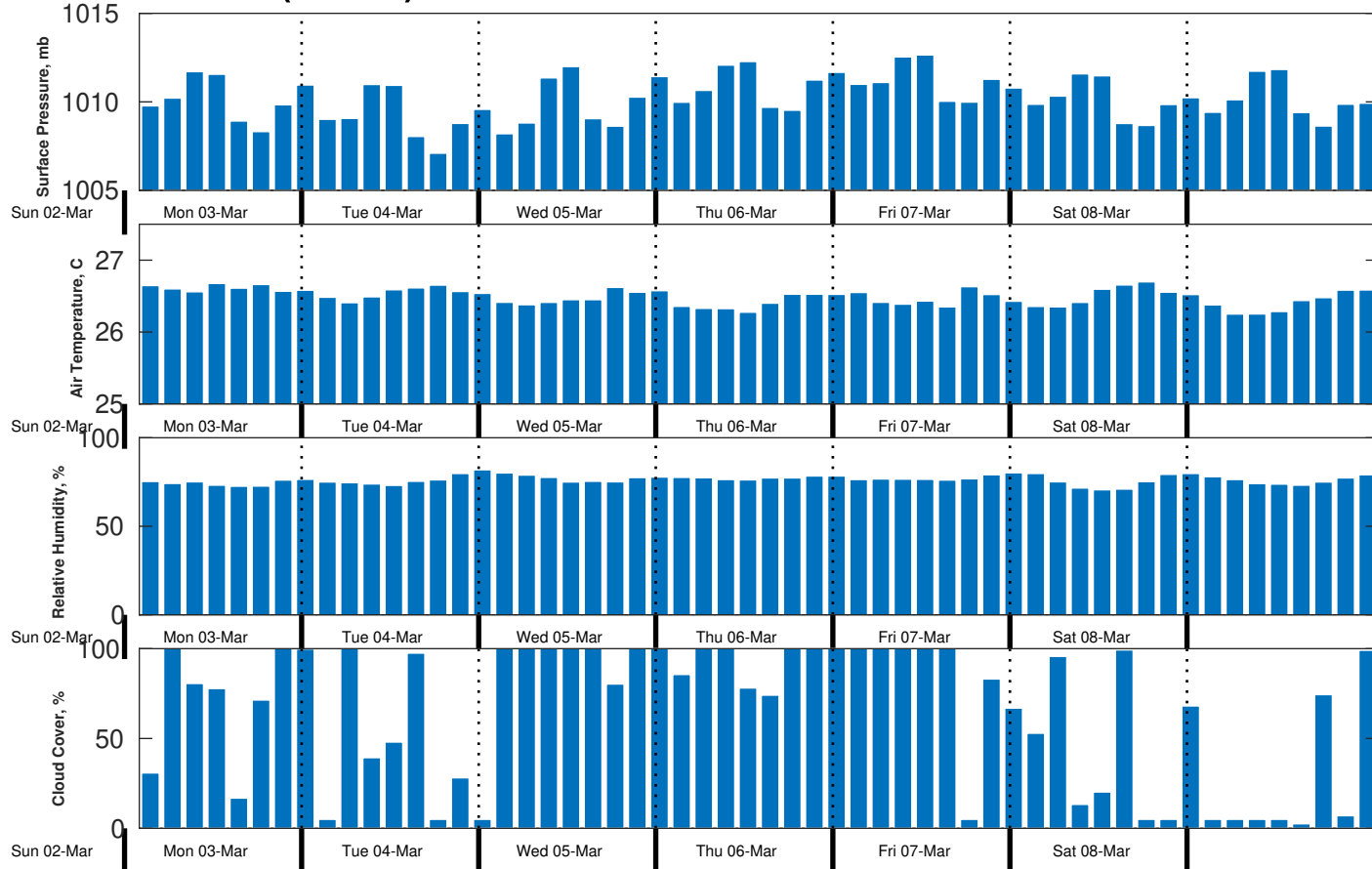
Friday Night

Winds: NW, 10-15 kts.  
Waves: N, 2-3 feet, 11-12 sec.  
No currents available.

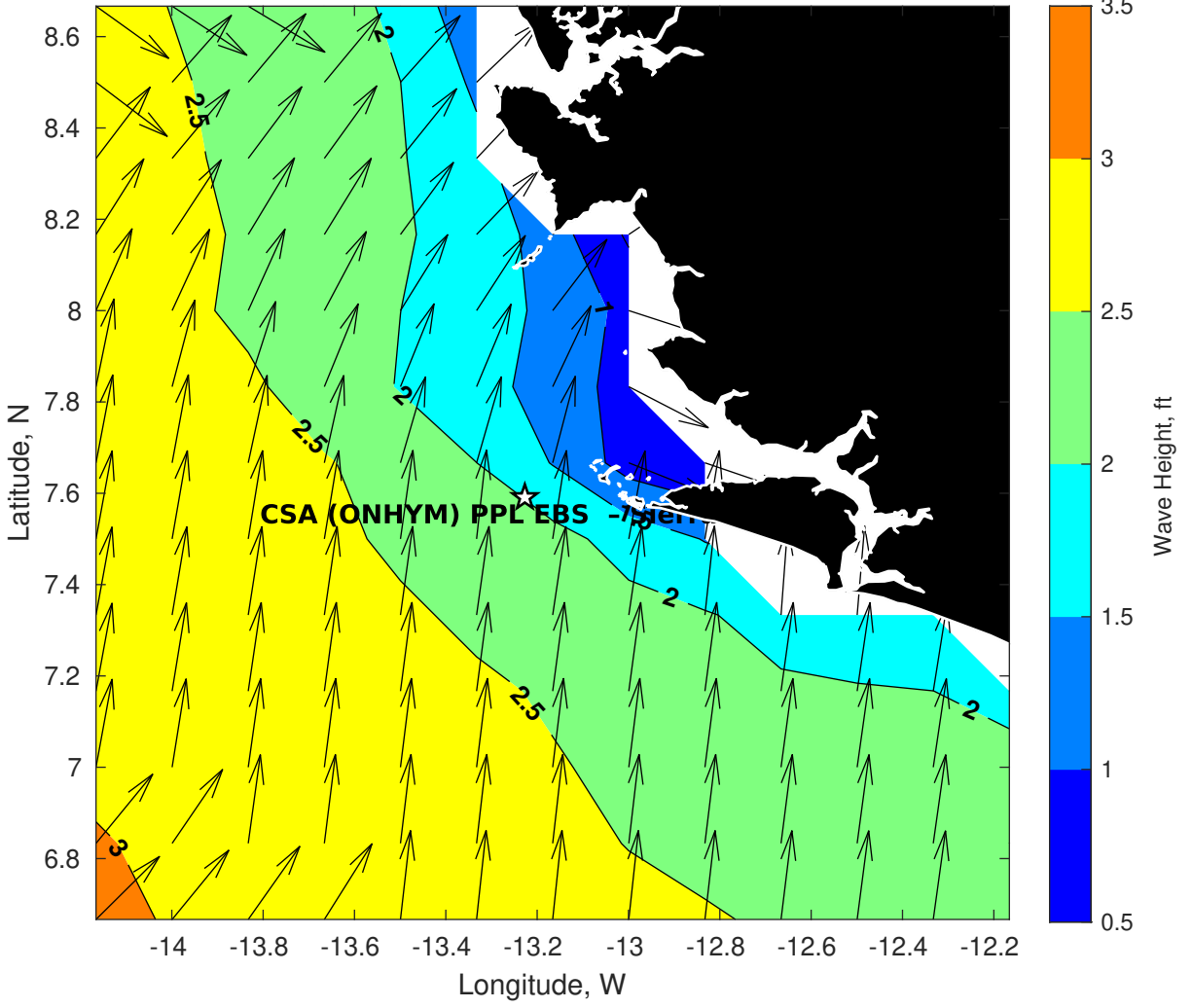
### Wind & Wave Forecast for CSA (ONHYM) PPL EBS - Sierra Leone from 03-Mar-2025 01:00:00 to 19-Mar-2025 01:00:00



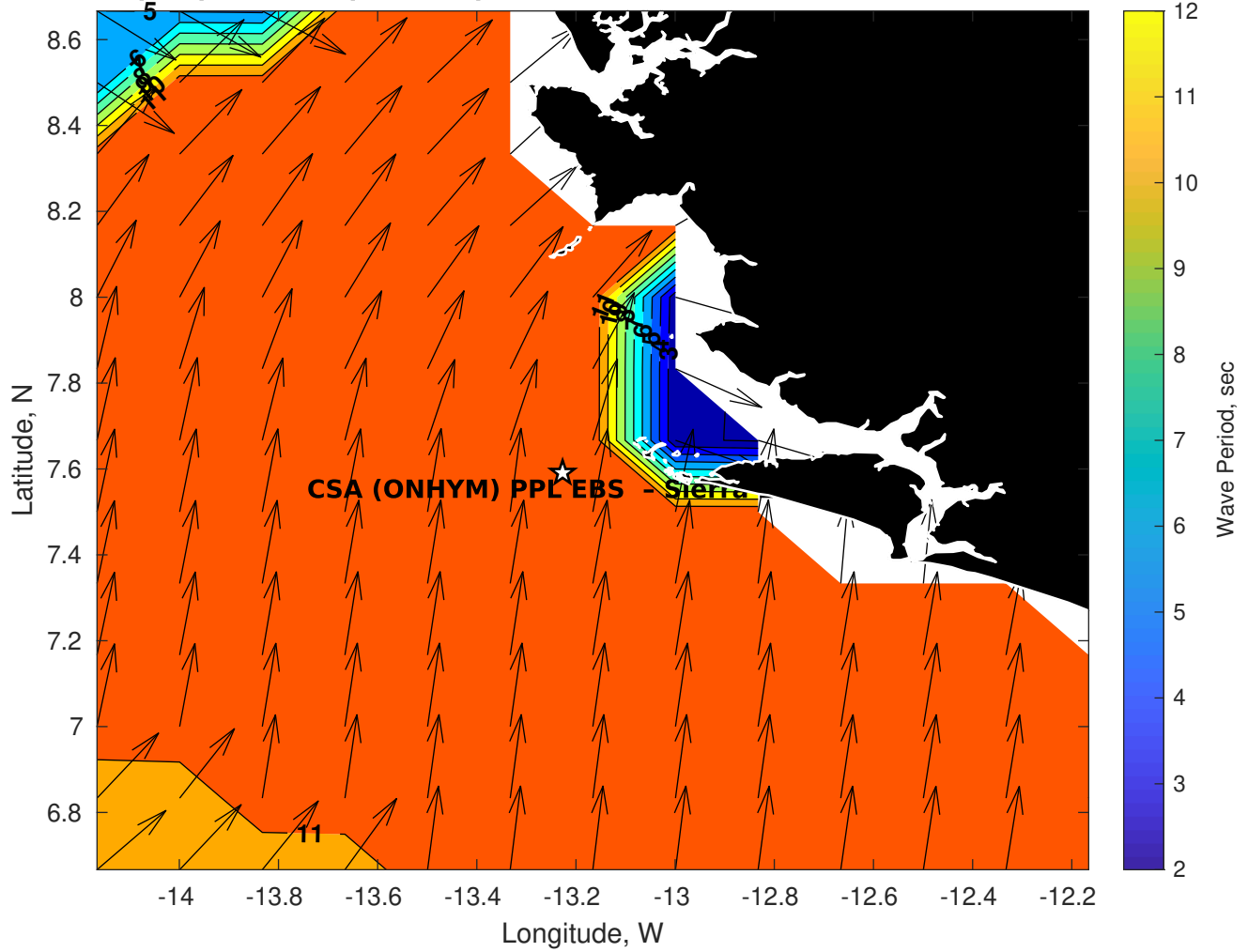
**Met Forecast for CSA (ONHYM) PPL EBS - Sierra Leone from 03-Mar-2025 00:00:00 to 10-Mar-2025 00:00:00**



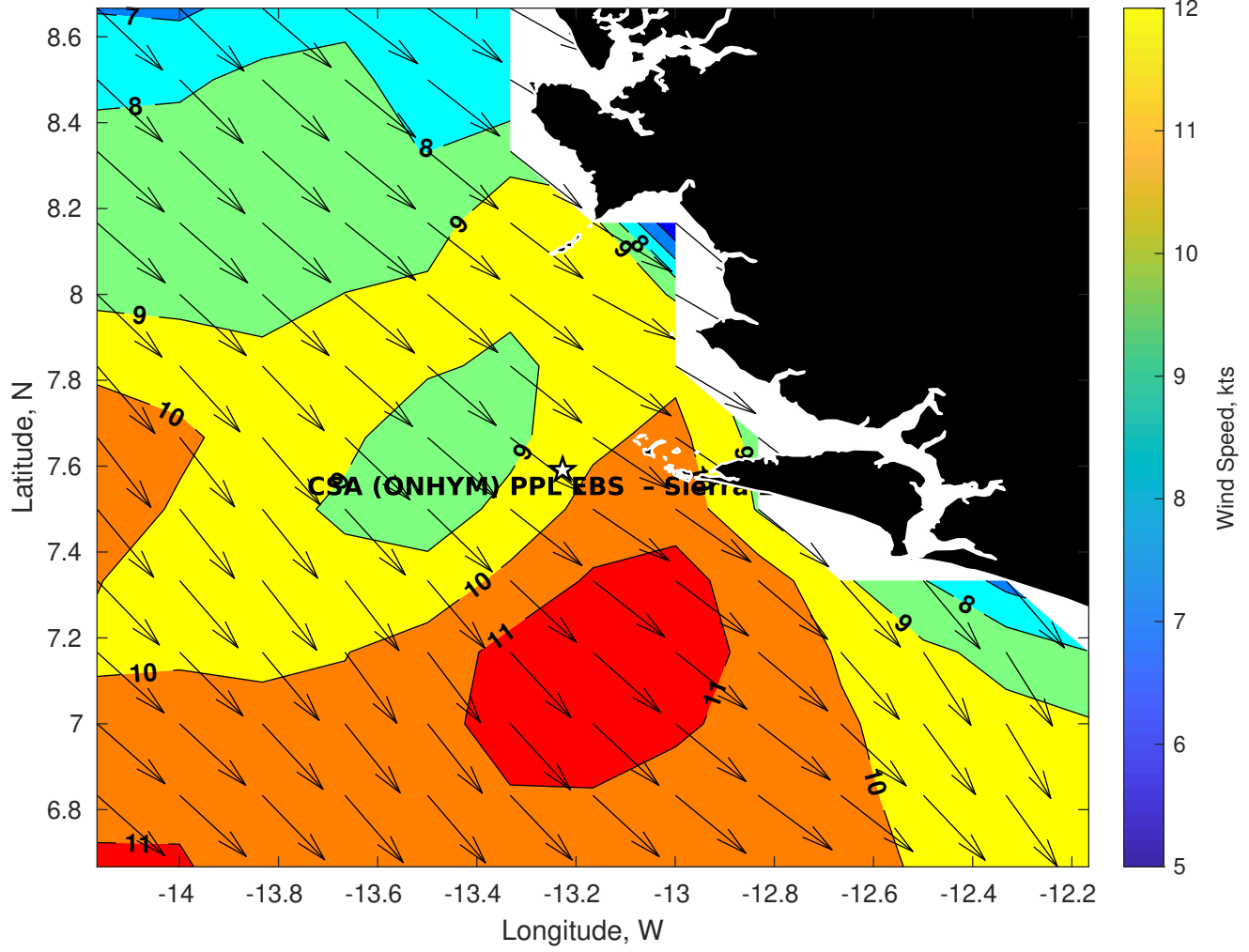
**Wave Height (ft) for CSA (ONHYM) PPL EBS - Sierra Leone at 03-Mar-2025 09:00:00**



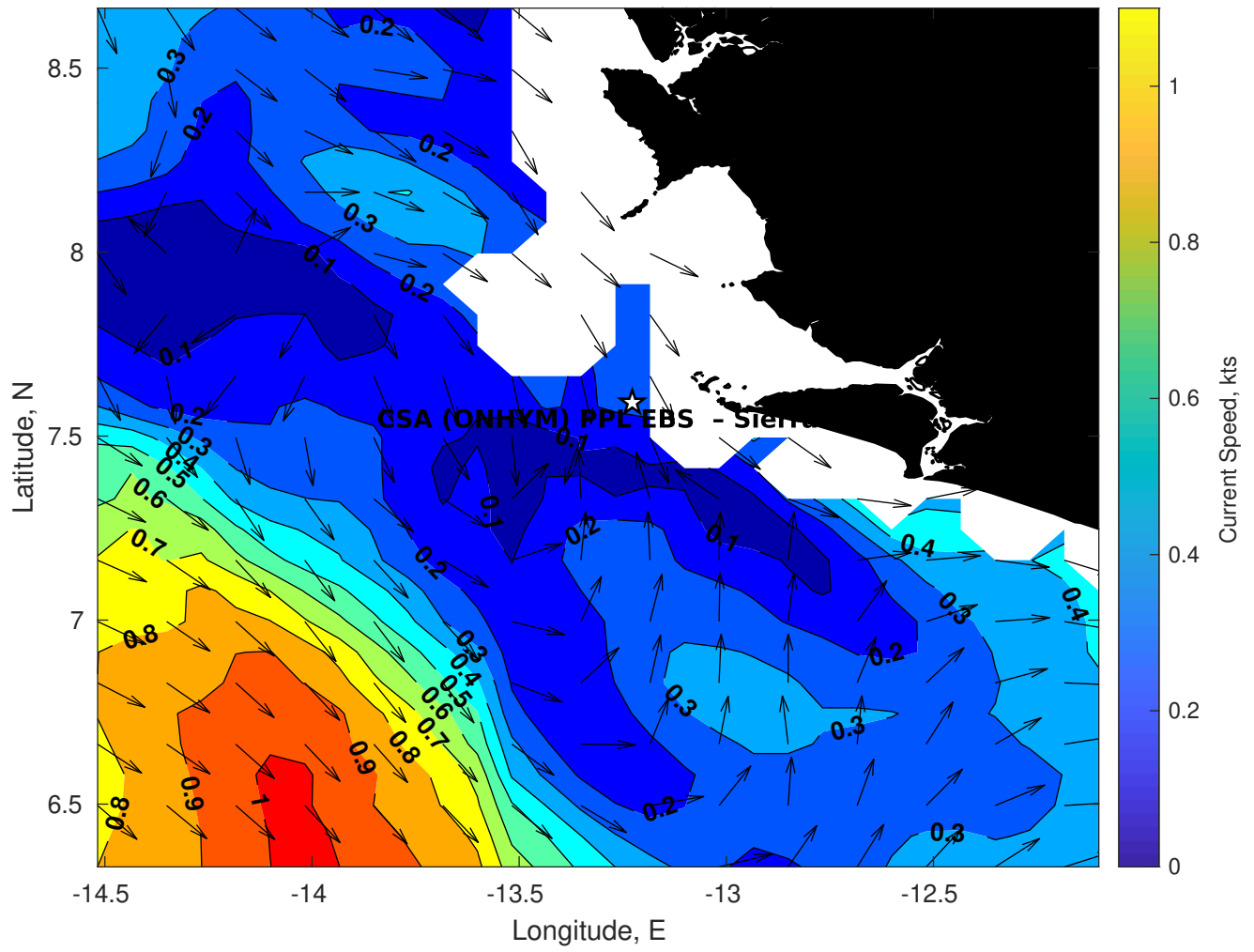
Wave Period (sec) for CSA (ONHYM) PPL EBS - Sierra Leone at 03-Mar-2025 09:00:00



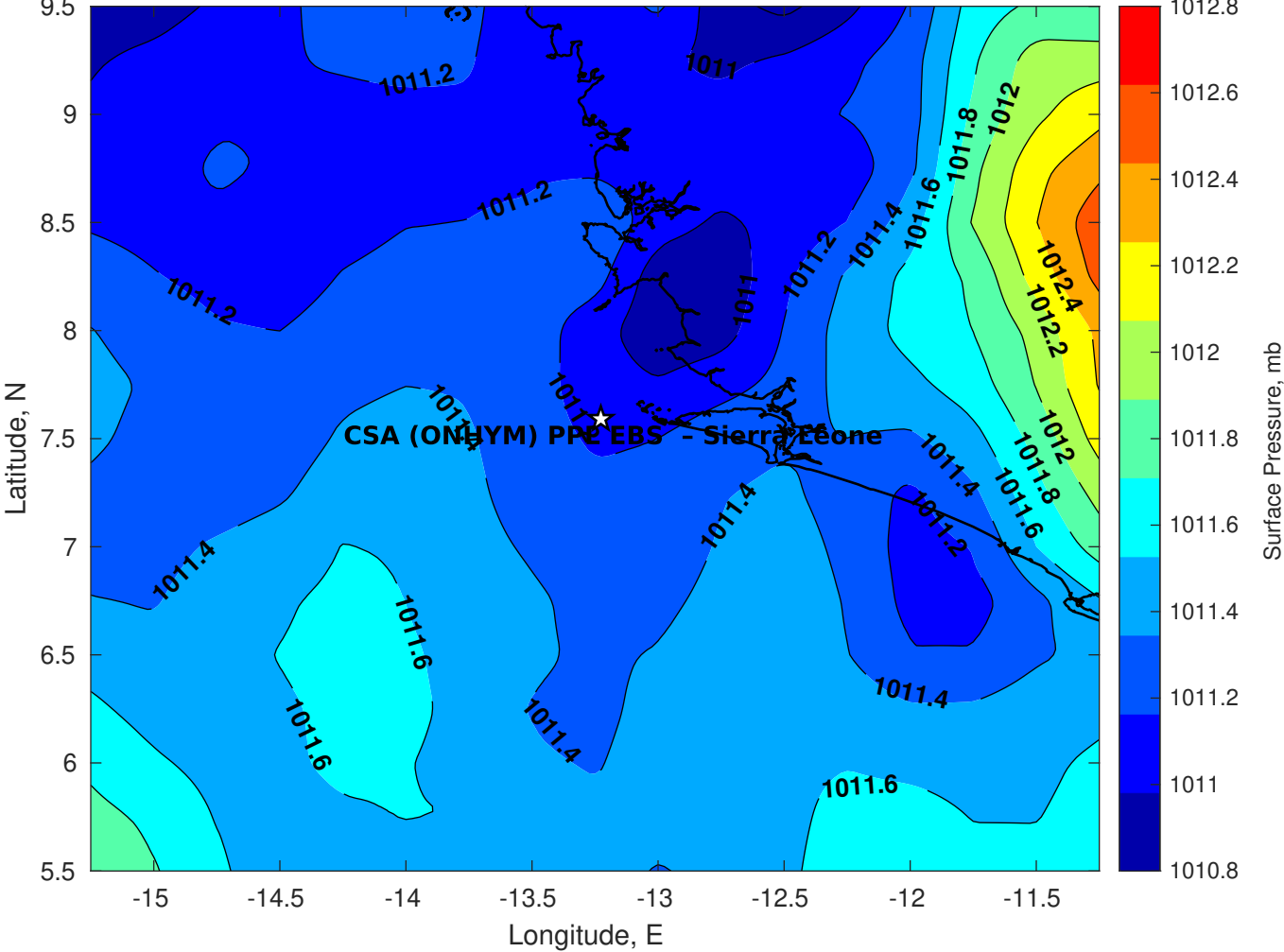
**Winds (kts) for CSA (ONHYM) PPL EBS - Sierra Leone at 03-Mar-2025 09:00:00**



**Surface Currents for CSA (ONHYM) PPL EBS - Sierra Leone at 02-Mar-2025 00:00:00**

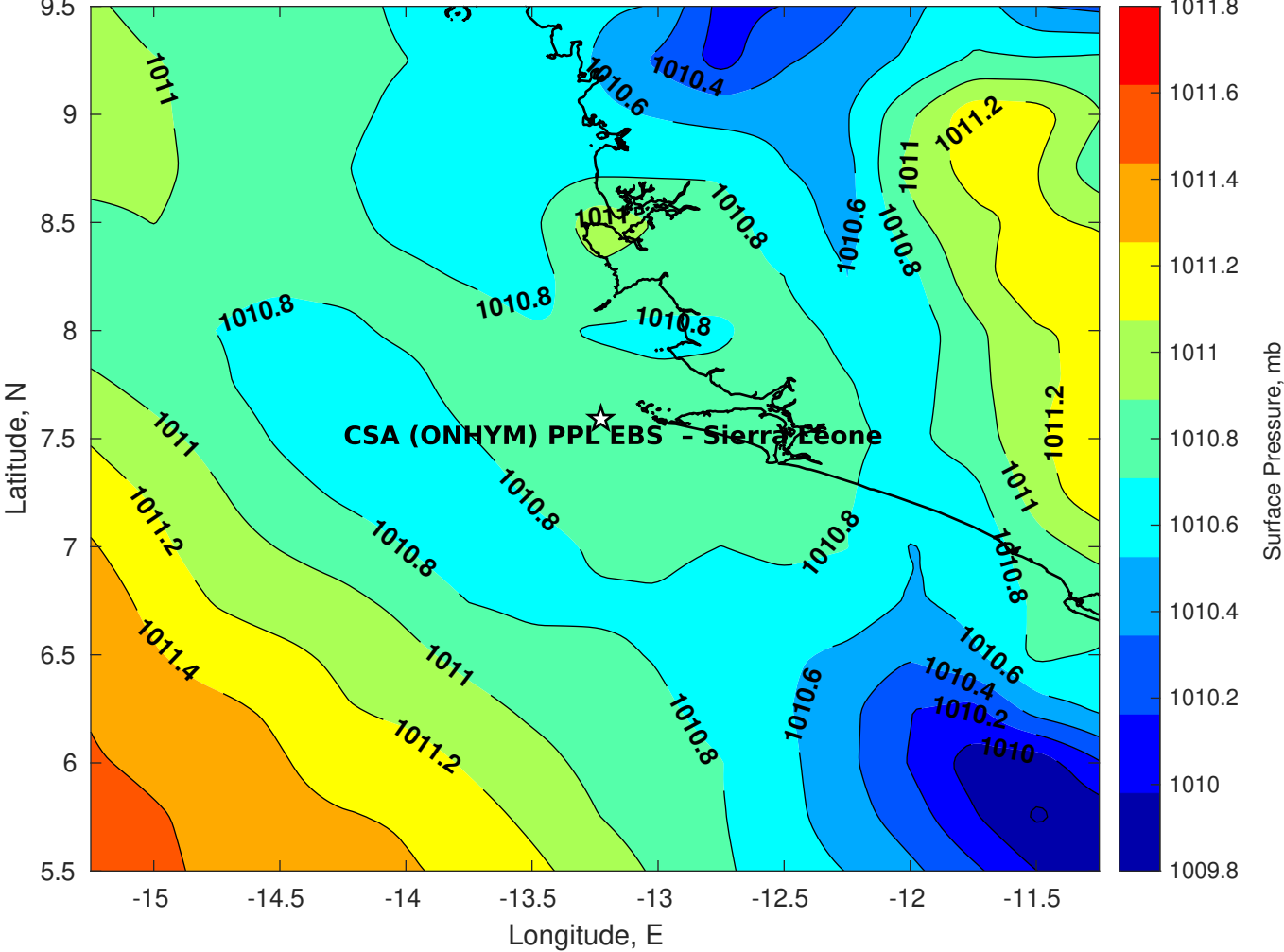


Surface Pressure (mb) for CSA (ONHYM) PPL EBS - Sierra Leone at 03-Mar-2025 00:00:00

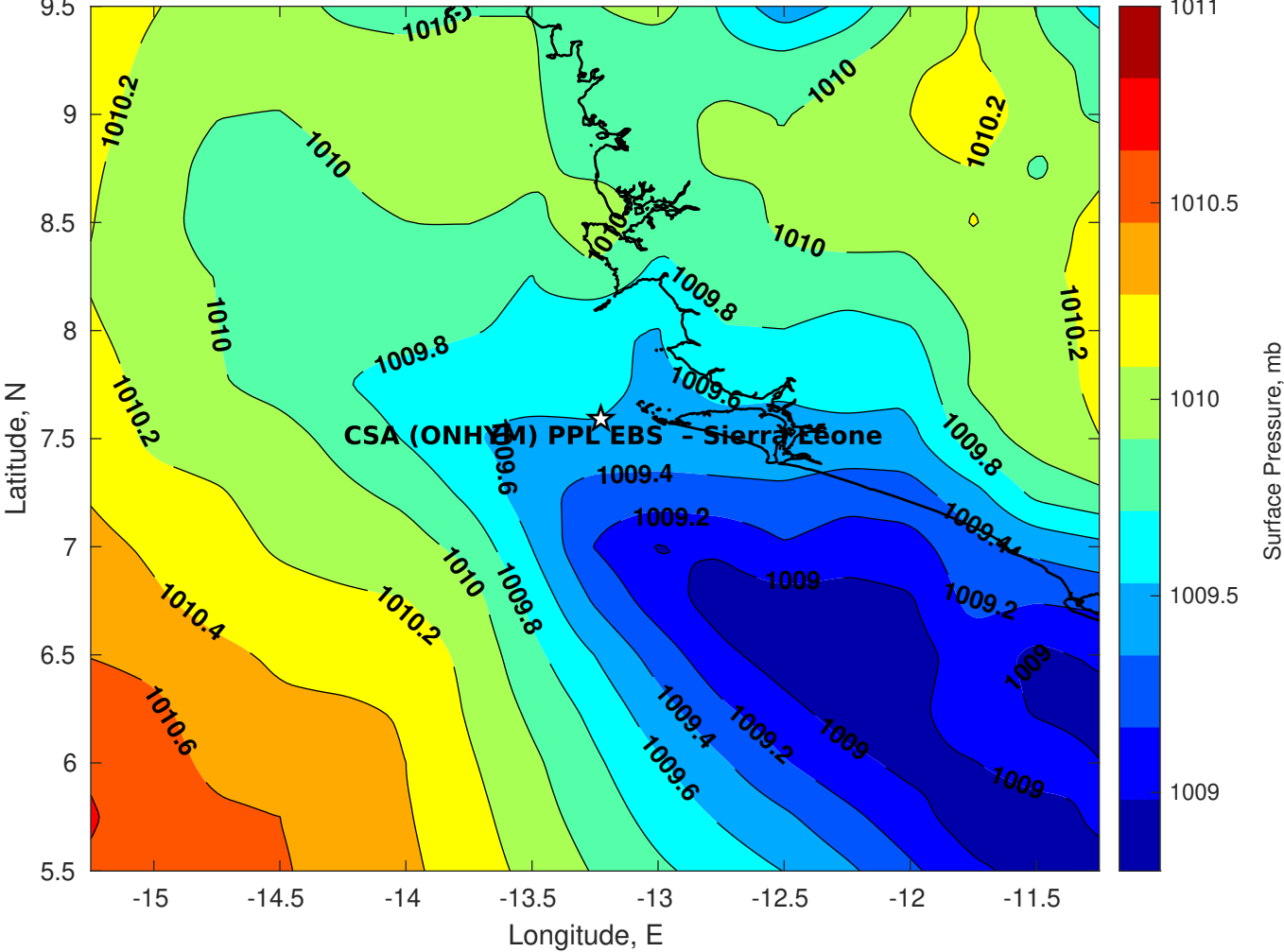




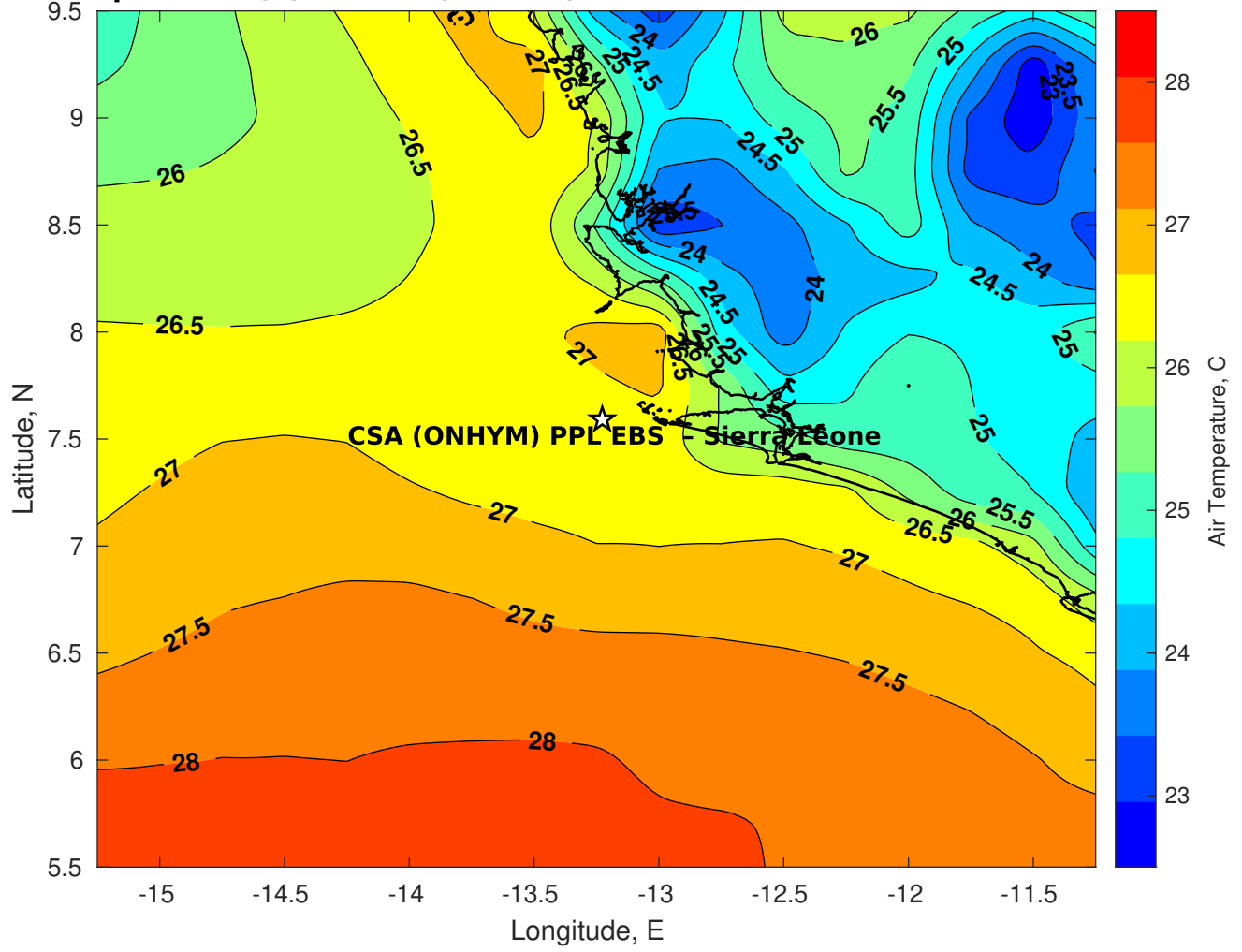
Surface Pressure (mb) for CSA (ONHYM) PPL EBS - Sierra Leone at 04-Mar-2025 00:00:00



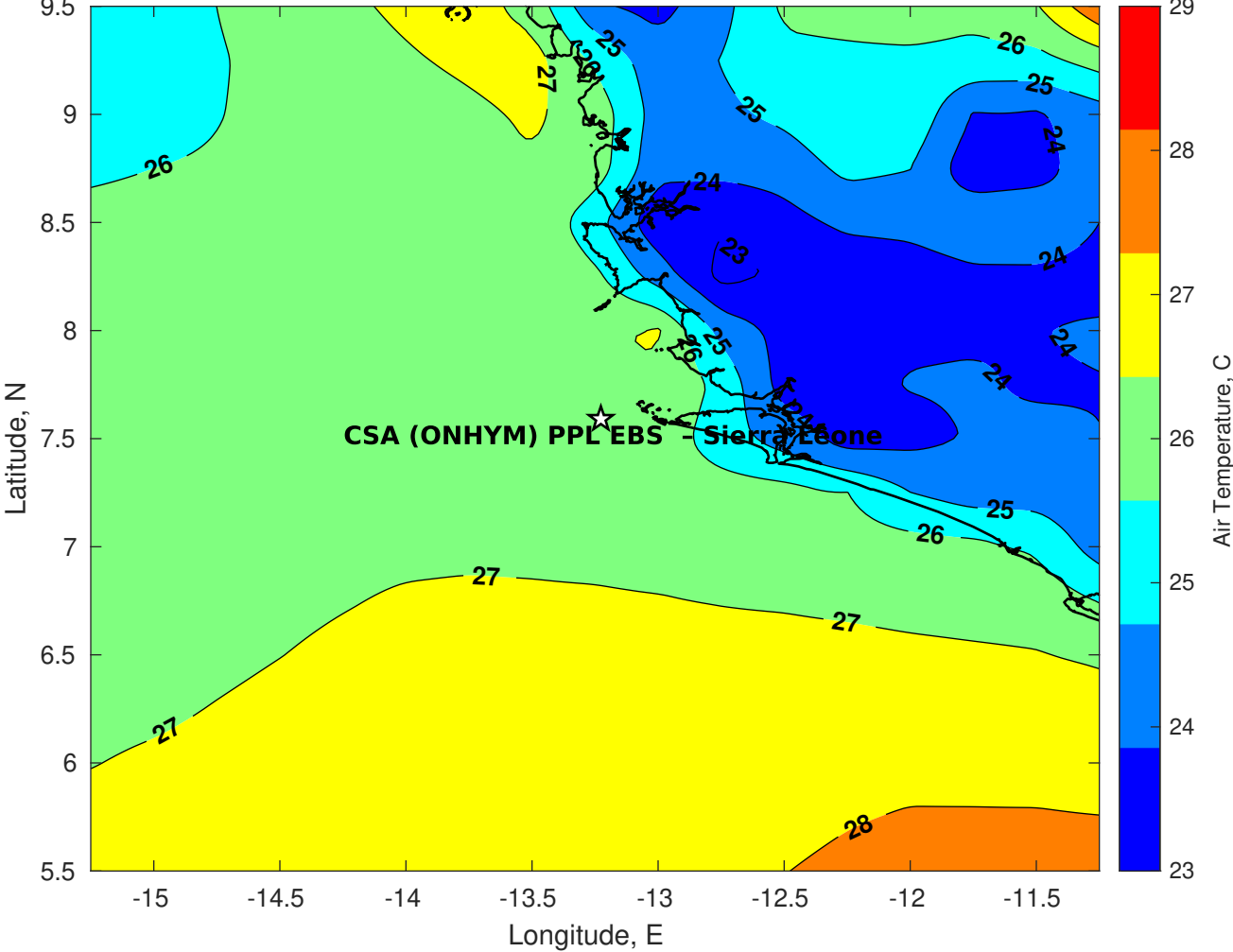
Surface Pressure (mb) for CSA (ONHYM) PPL EBS - Sierra Leone at 05-Mar-2025 00:00:00



**Air Temperature (C) for CSA (ONHYM) PPL EBS - Sierra Leone at 03-Mar-2025**



**Air Temperature (C) for CSA (ONHYM) PPL EBS - Sierra Leone at 03-Mar-2025**



**Air Temperature (C) for CSA (ONHYM) PPL EBS - Sierra Leone at 03-Mar-2025**

