

\*\*\*\*\*

Marine Weather Forecast for CSA (ONHYM) PPL EBS - Guinea

Forecast valid as of 04-Mar-2025 0900 GMT

\*\*\*\*\*

All times are local.

Today

Winds: NW, 15-20 kts.

Waves: NW, 1-2 feet, 4-5 sec.

No currents available.

Tonight

Winds: NW, 10-15 kts.

Waves: W, 1-2 feet, 5-6 sec.

No currents available.

Wednesday

Winds: N, 10-15 kts.

Waves: W, 1-2 feet, 5-6 sec.

No currents available.

Wednesday Night

Winds: NW, 10-15 kts.

Waves: W, 1-2 feet, 4-5 sec.

No currents available.

Thursday

Winds: N, 10-15 kts.

Waves: W, 1-2 feet, 5-6 sec.

No currents available.

Thursday Night

Winds: NW, 5-10 kts.

Waves: W, 1-2 feet, 4-5 sec.

No currents available.

Friday

Winds: NE, 10-15 kts.

Waves: NW, 1-2 feet, 4-5 sec.

No currents available.

Friday Night

Winds: NW, 5-10 kts.

Waves: W, 1-2 feet, 4-5 sec.

No currents available.

Saturday

Winds: E, 10-15 kts.

Waves: NW, 1-2 feet, 4-5 sec.

No currents available.

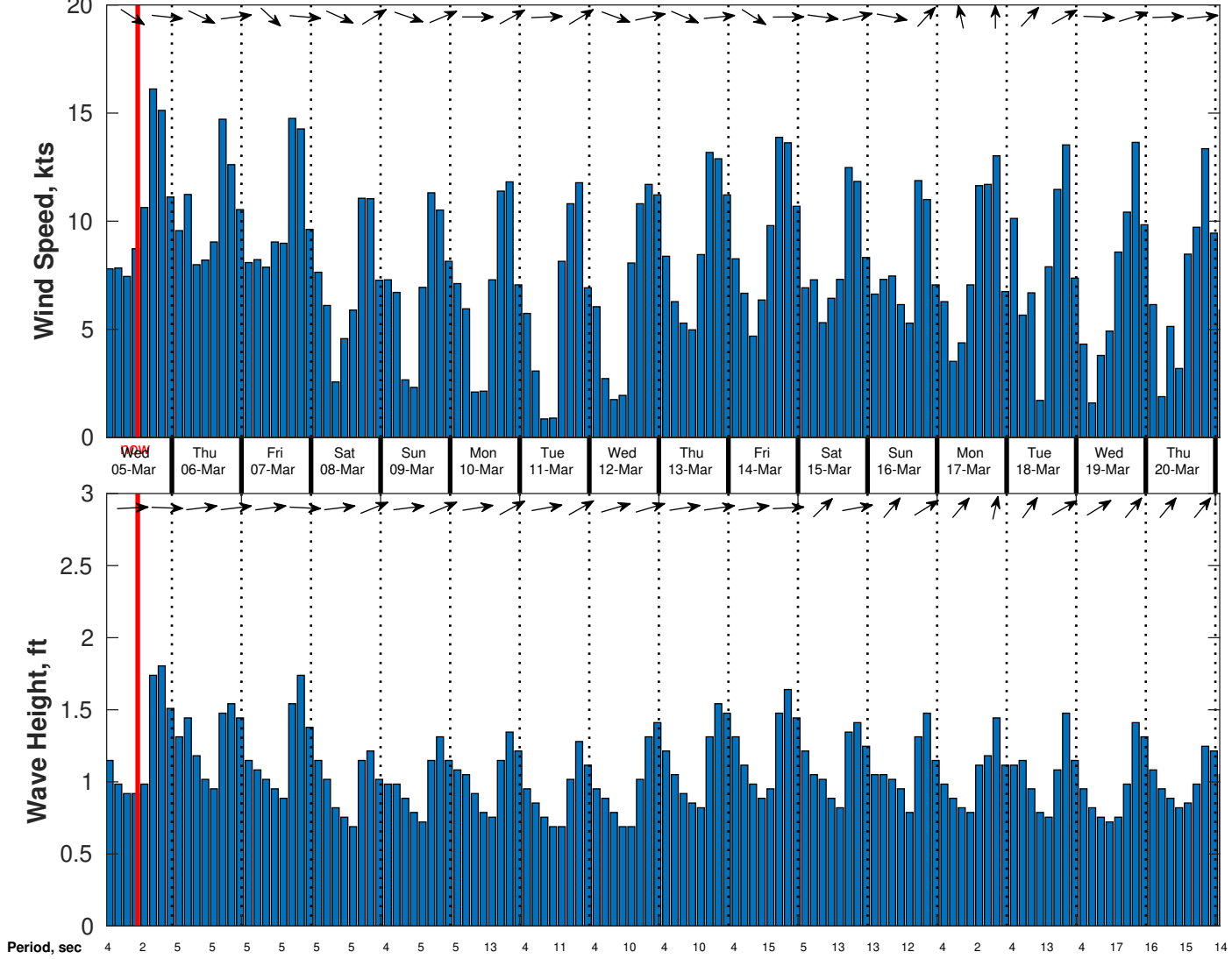
Saturday Night

Winds: W, 5-10 kts.

Waves: W, 1-2 feet, 5-6 sec.

No currents available.

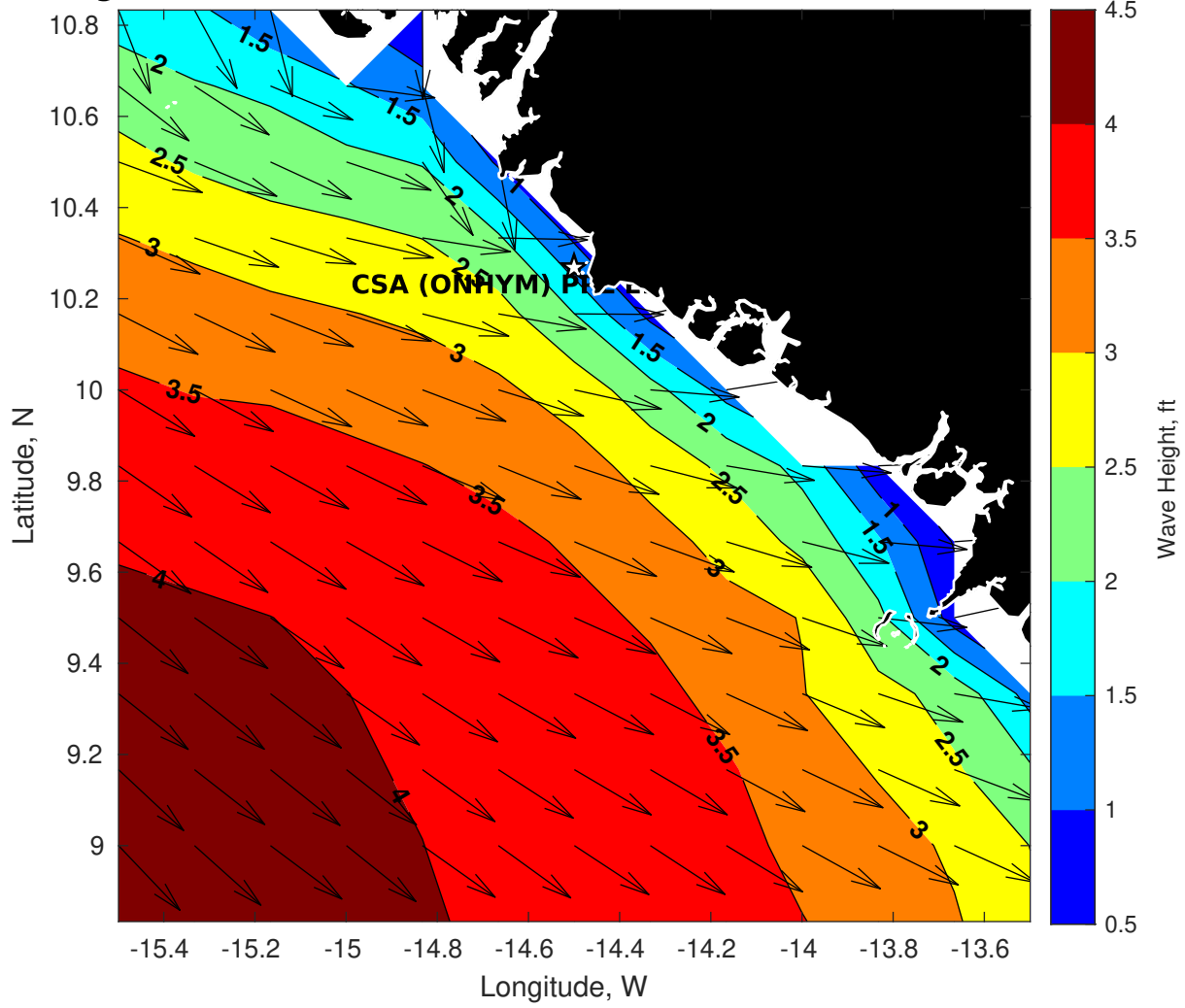
**Wind & Wave Forecast for CSA (ONHYM) PPL EBS - Guinea from 04-Mar-2025 01:00:00 to 20-Mar-2025 01:00:00**



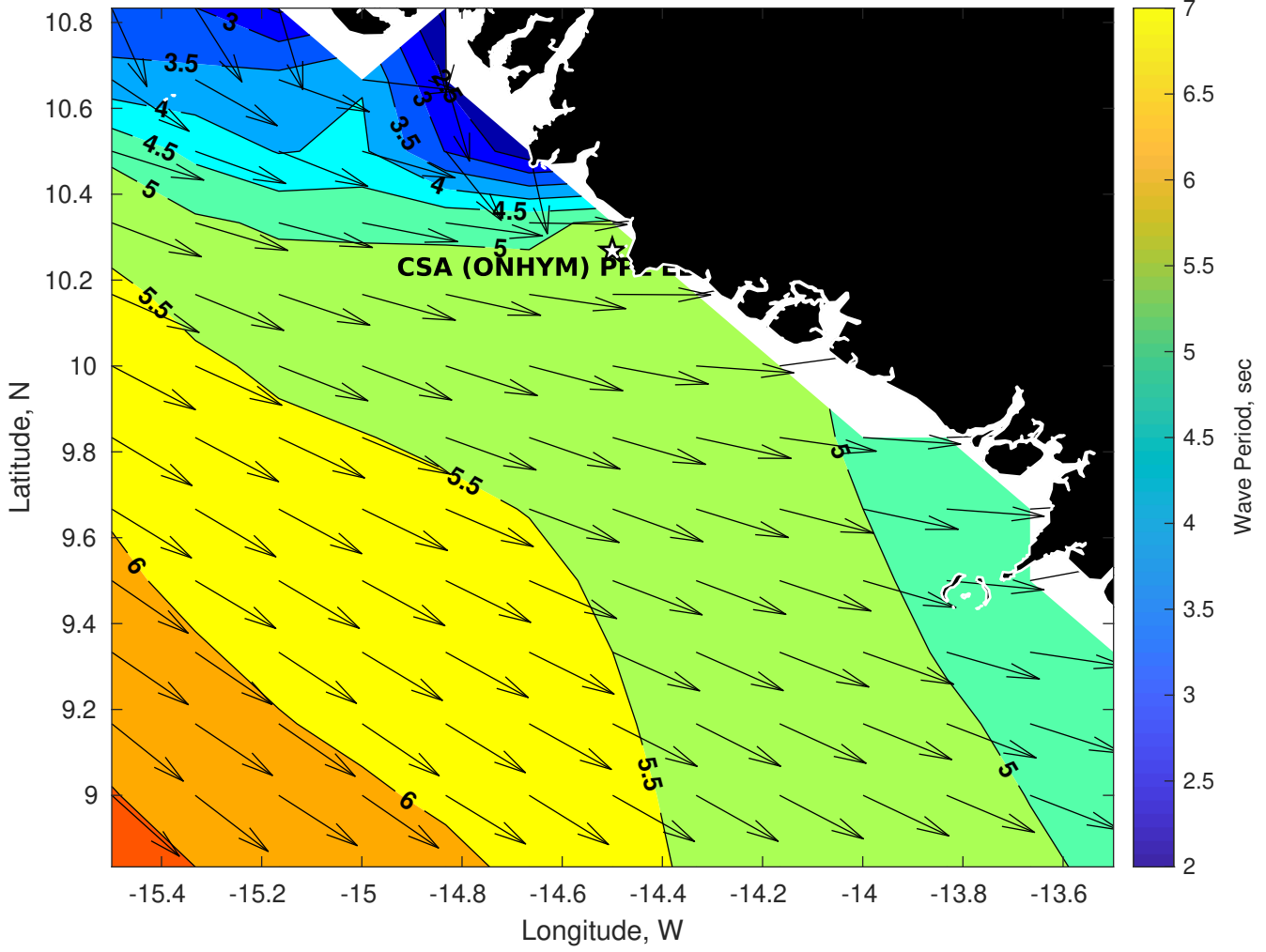
**Met Forecast for CSA (ONHYM) PPL EBS - Guinea from 04-Mar-2025 00:00:00 to 11-Mar-2025 00:00:00**



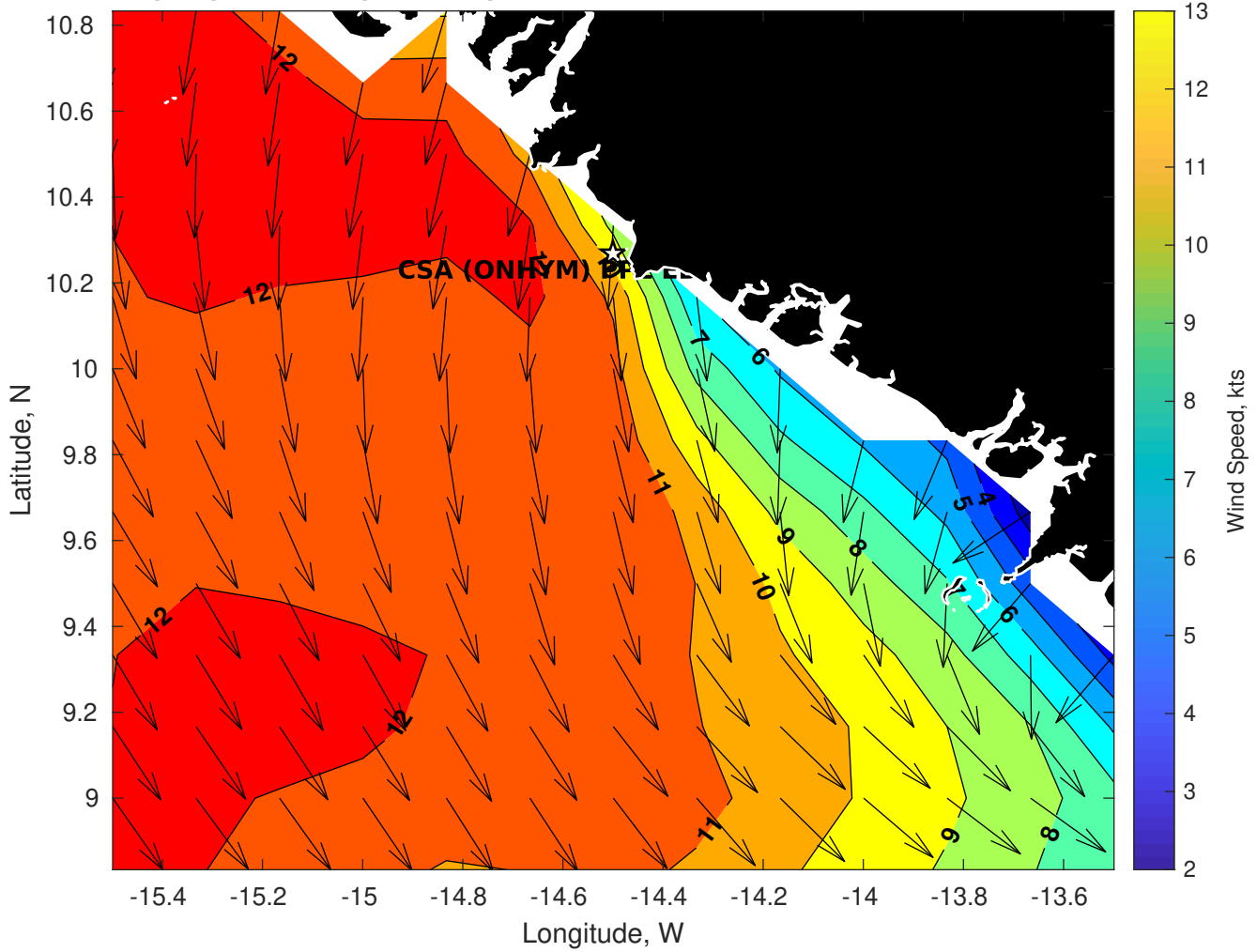
**Wave Height (ft) for CSA (ONHYM) PPL EBS - Guinea at 04-Mar-2025 09:00:00**



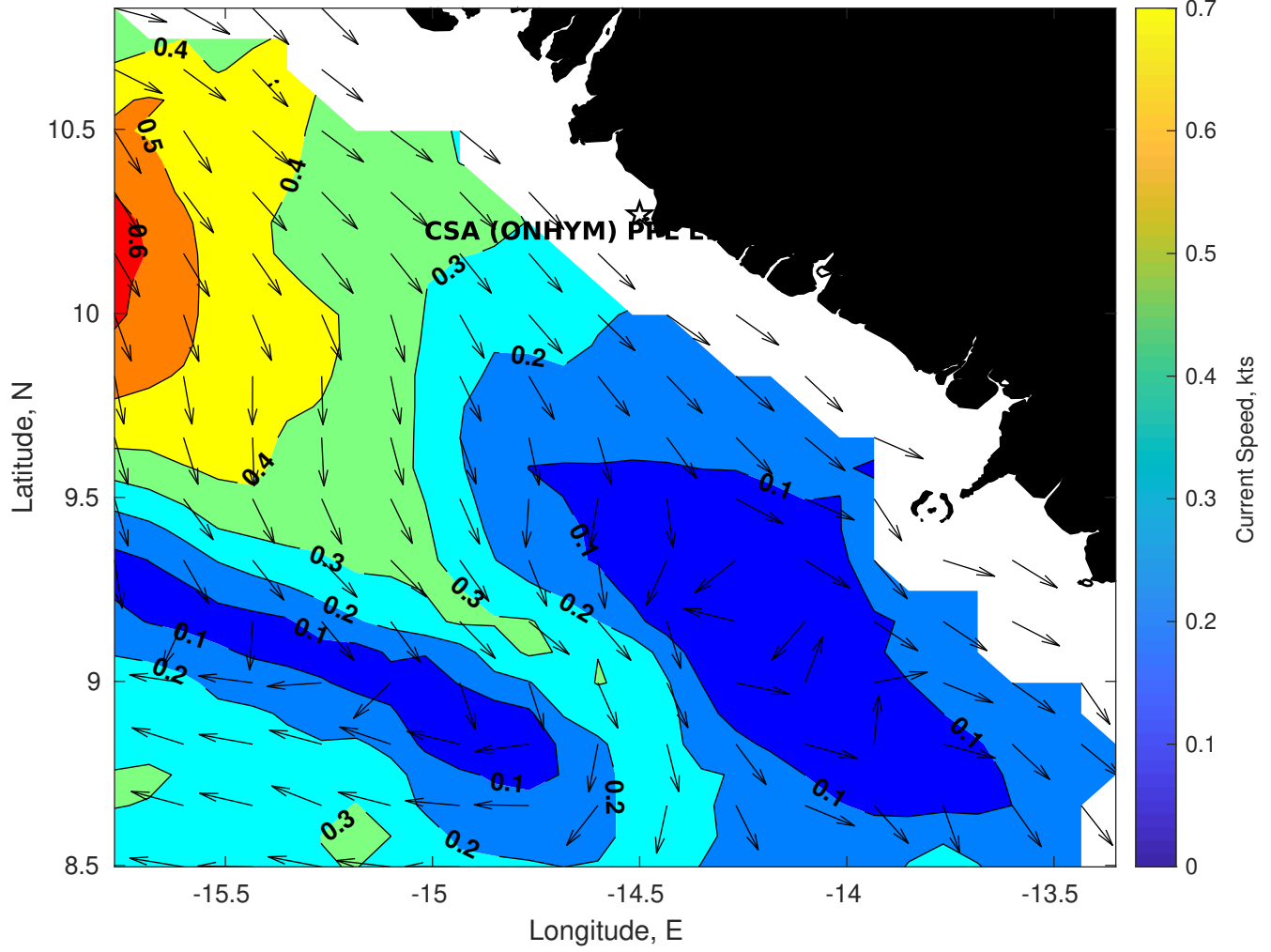
**Wave Period (sec) for CSA (ONHYM) PPL EBS - Guinea at 04-Mar-2025 09:00:00**



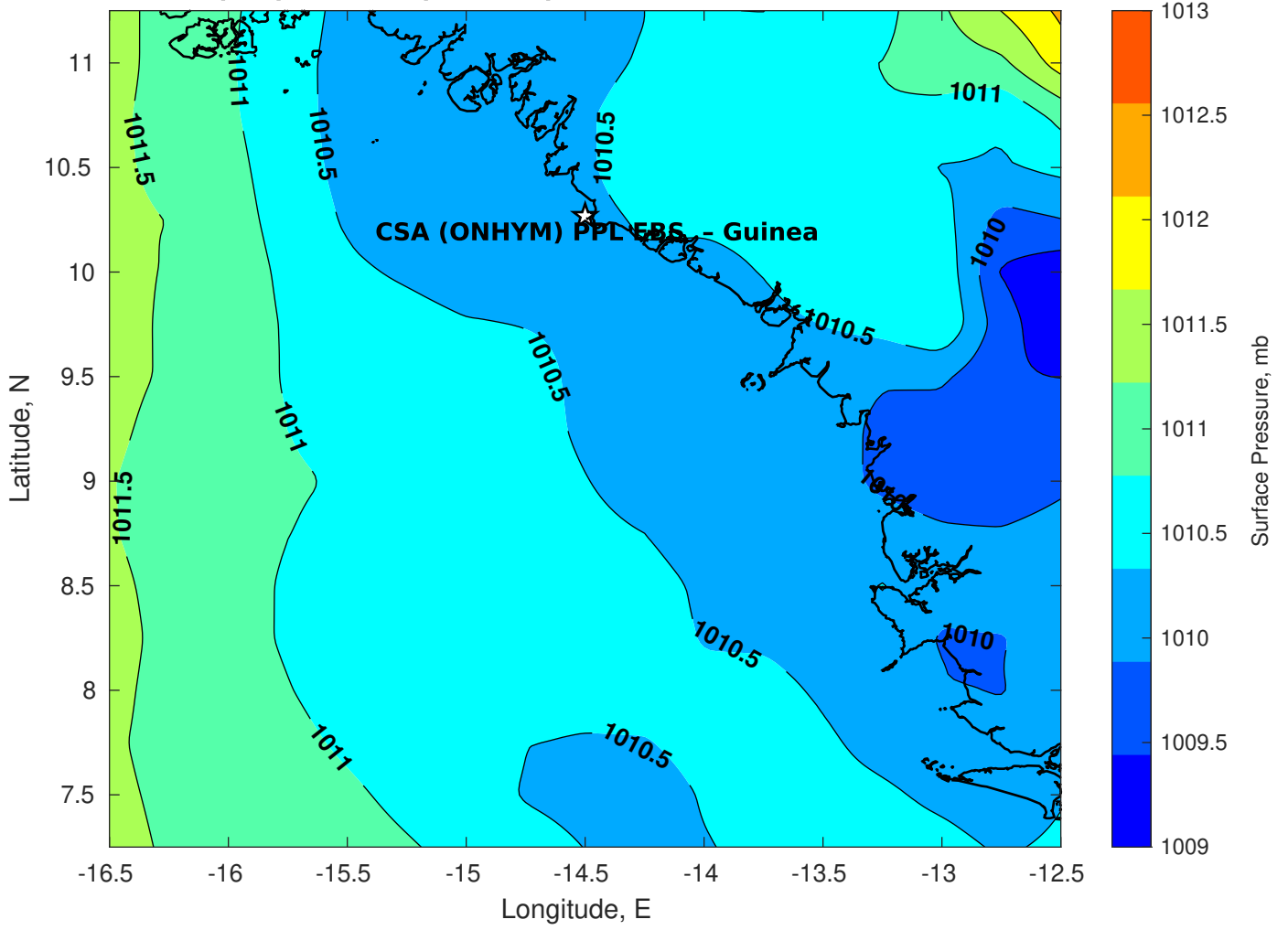
**Winds (kts) for CSA (ONHYM) PPL EBS - Guinea at 04-Mar-2025 09:00:00**



**Surface Currents for CSA (ONHYM) PPL EBS - Guinea at 03-Mar-2025 00:00:00**

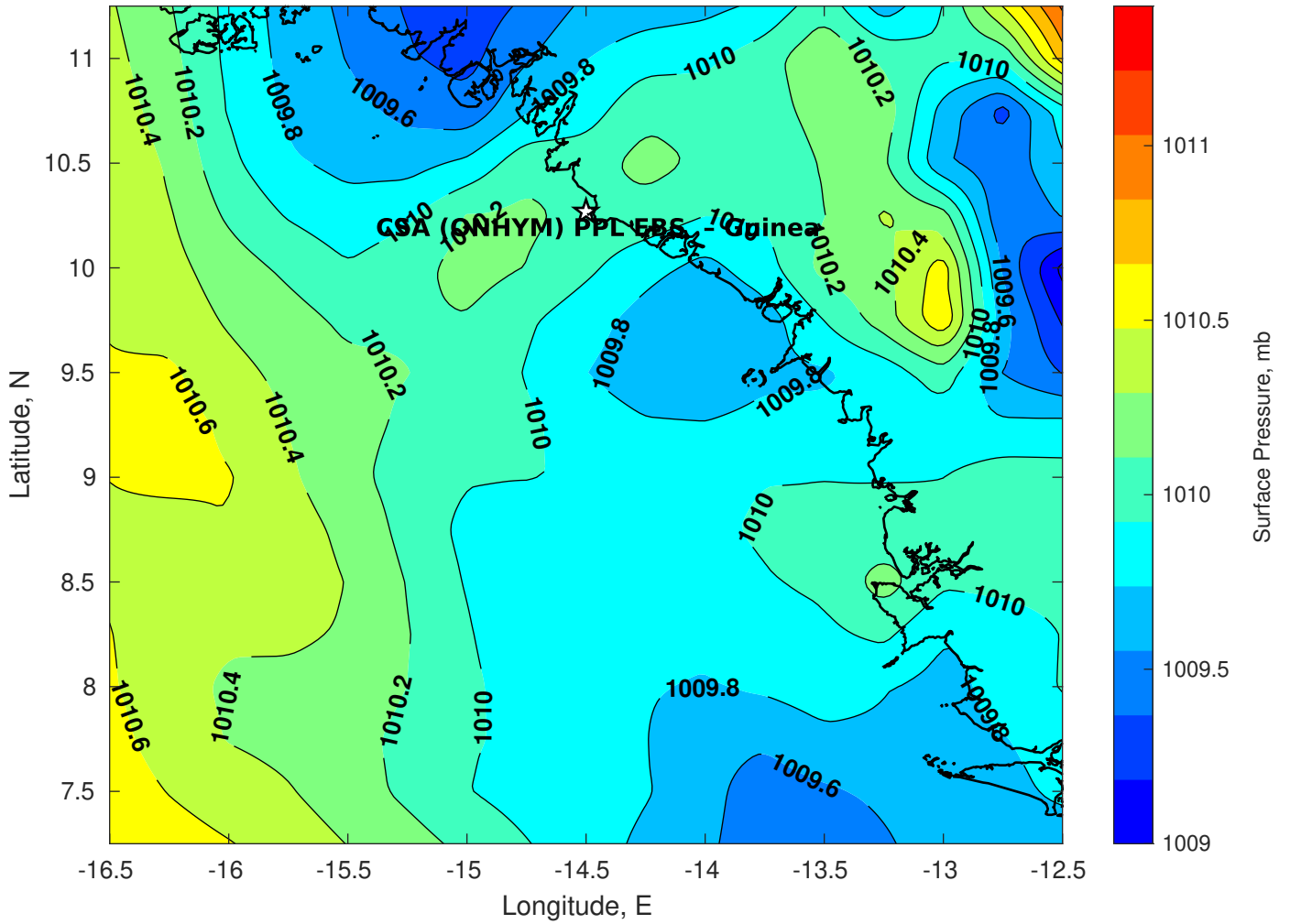


**Surface Pressure (mb) for CSA (ONHYM) PPL EBS - Guinea at 04-Mar-2025 00:00:00**

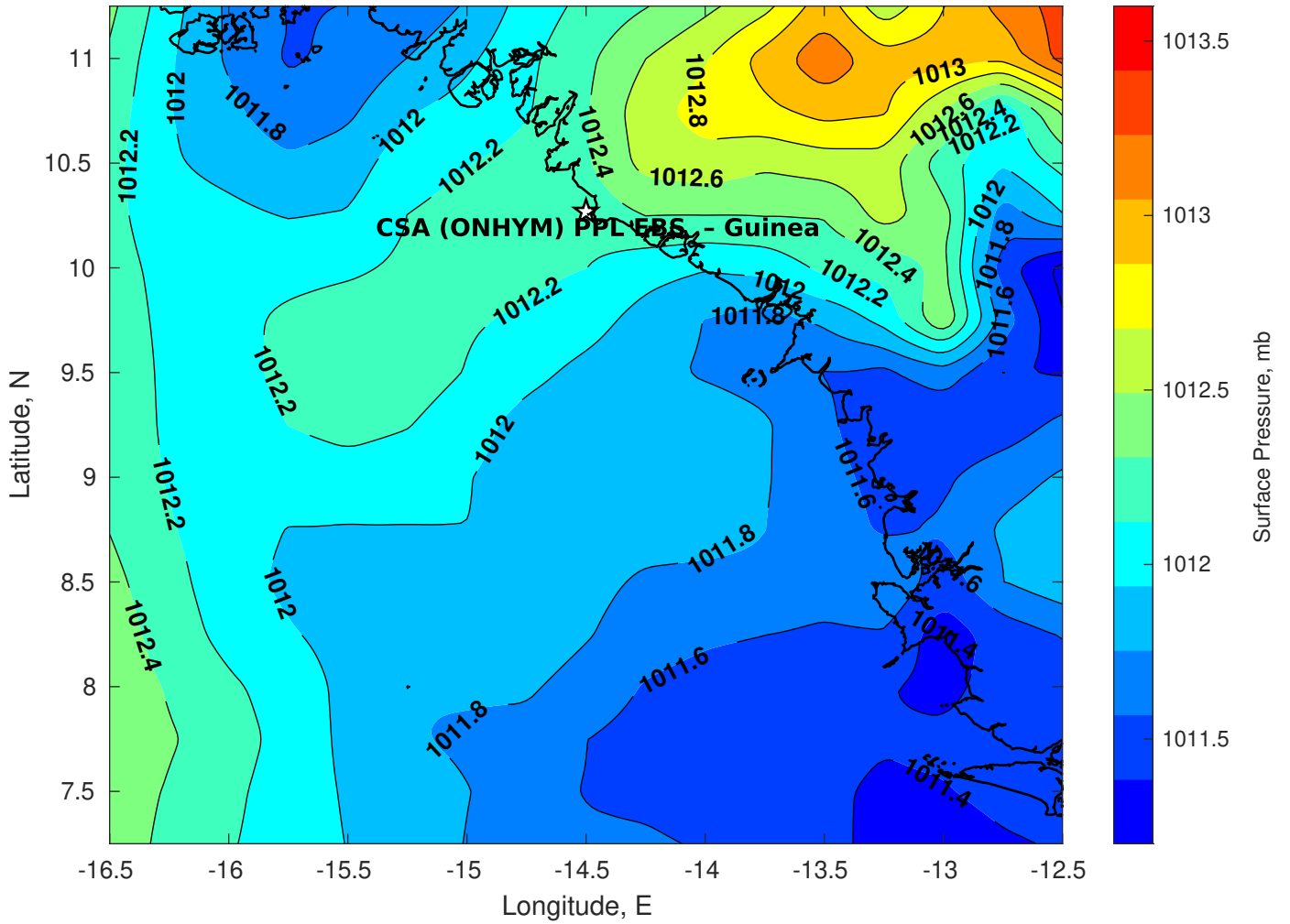




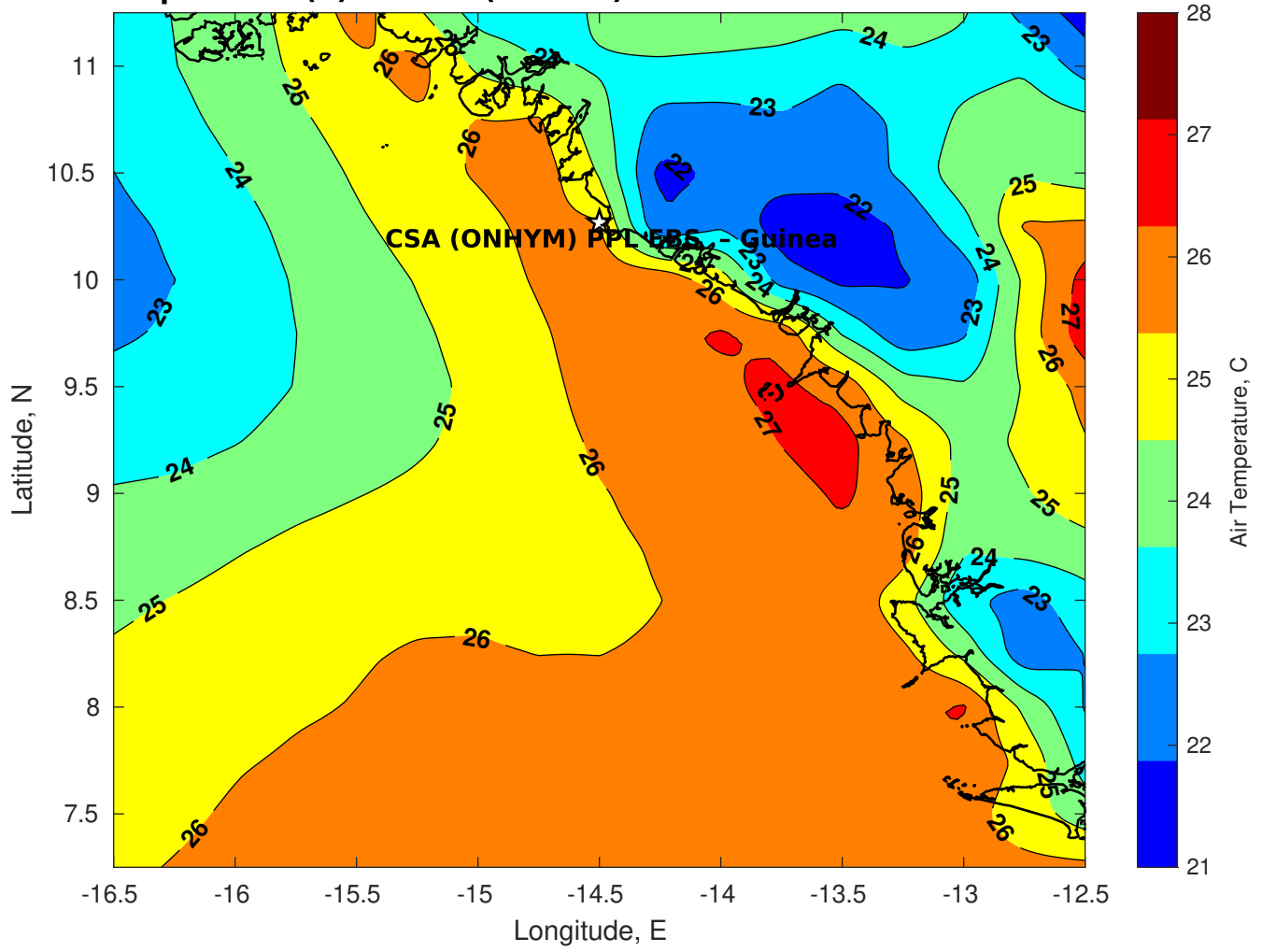
**Surface Pressure (mb) for CSA (ONHYM) PPL EBS - Guinea at 05-Mar-2025 00:00:00**



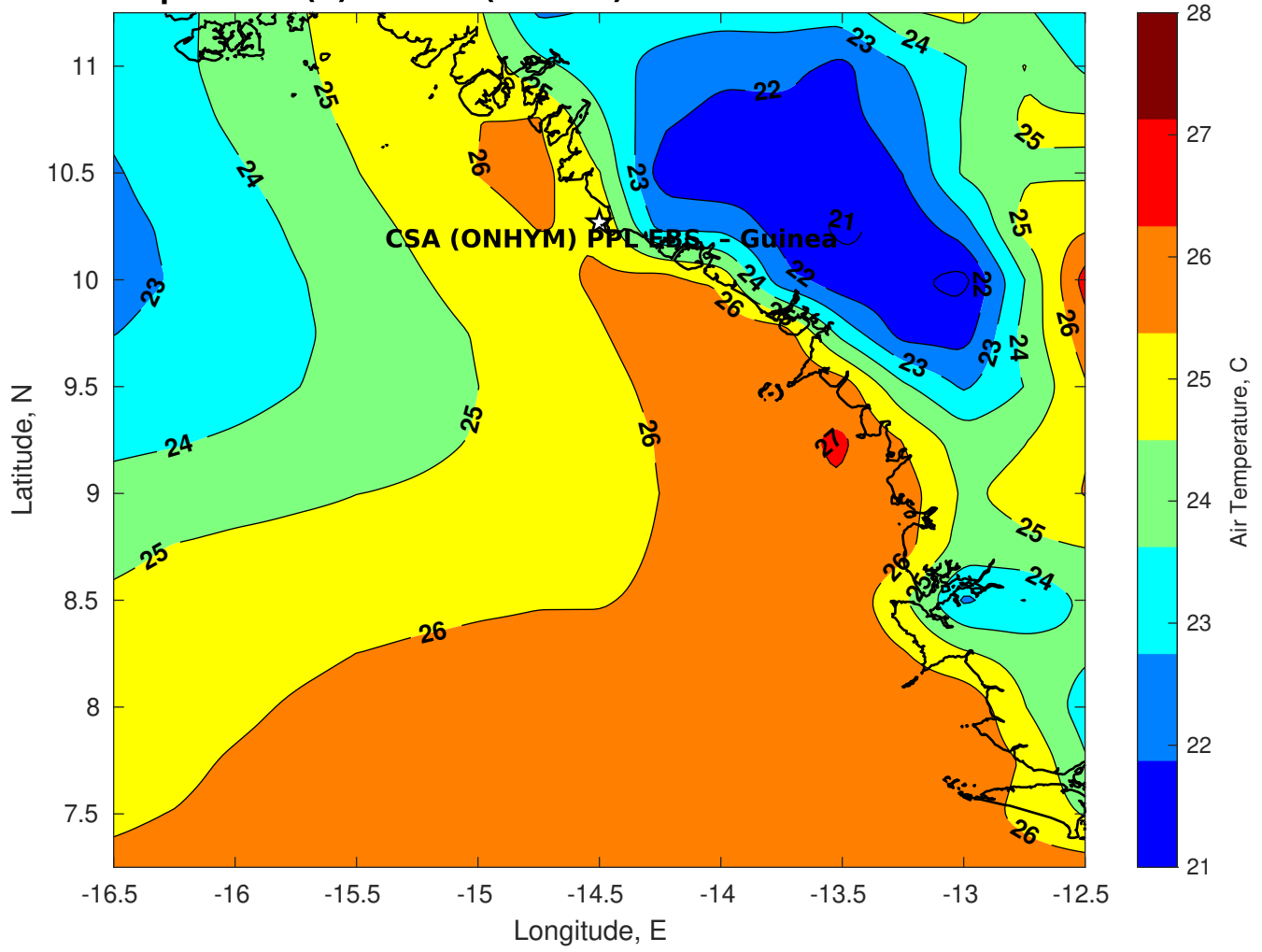
**Surface Pressure (mb) for CSA (ONHYM) PPL EBS - Guinea at 06-Mar-2025 00:00:00**



**Air Temperature (C) for CSA (ONHYM) PPL EBS - Guinea at 04-Mar-2025**



**Air Temperature (C) for CSA (ONHYM) PPL EBS - Guinea at 04-Mar-2025**



**Air Temperature (C) for CSA (ONHYM) PPL EBS - Guinea at 04-Mar-2025**

