

\*\*\*\*\*

Marine Weather Forecast for CSA (ONHYM) PPL EBS - Nigeria  
Forecast valid as of 04-Mar-2025 0900 GMT

\*\*\*\*\*

All times are local.

Today

Winds: NW, 10-15 kts.  
Waves: NW, 3-4 feet, 5-6 sec.  
No currents available.

Tonight

Winds: NW, 15-20 kts.  
Waves: NW, 3-4 feet, 5-6 sec.  
No currents available.

Wednesday

Winds: NW, 10-15 kts.  
Waves: NW, 3-4 feet, 5-6 sec.  
No currents available.

Wednesday Night

Winds: NW, 10-15 kts.  
Waves: NW, 3-4 feet, 5-6 sec.  
No currents available.

Thursday

Winds: NW, 10-15 kts.  
Waves: N, 3-4 feet, 8-9 sec.  
No currents available.

Thursday Night

Winds: NW, 10-15 kts.  
Waves: N, 3-4 feet, 8-9 sec.  
No currents available.

Friday

Winds: NW, 15-20 kts.  
Waves: NW, 3-4 feet, 18-19 sec.  
No currents available.

Friday Night

Winds: NW, 10-15 kts.  
Waves: NW, 3-4 feet, 16-17 sec.  
No currents available.

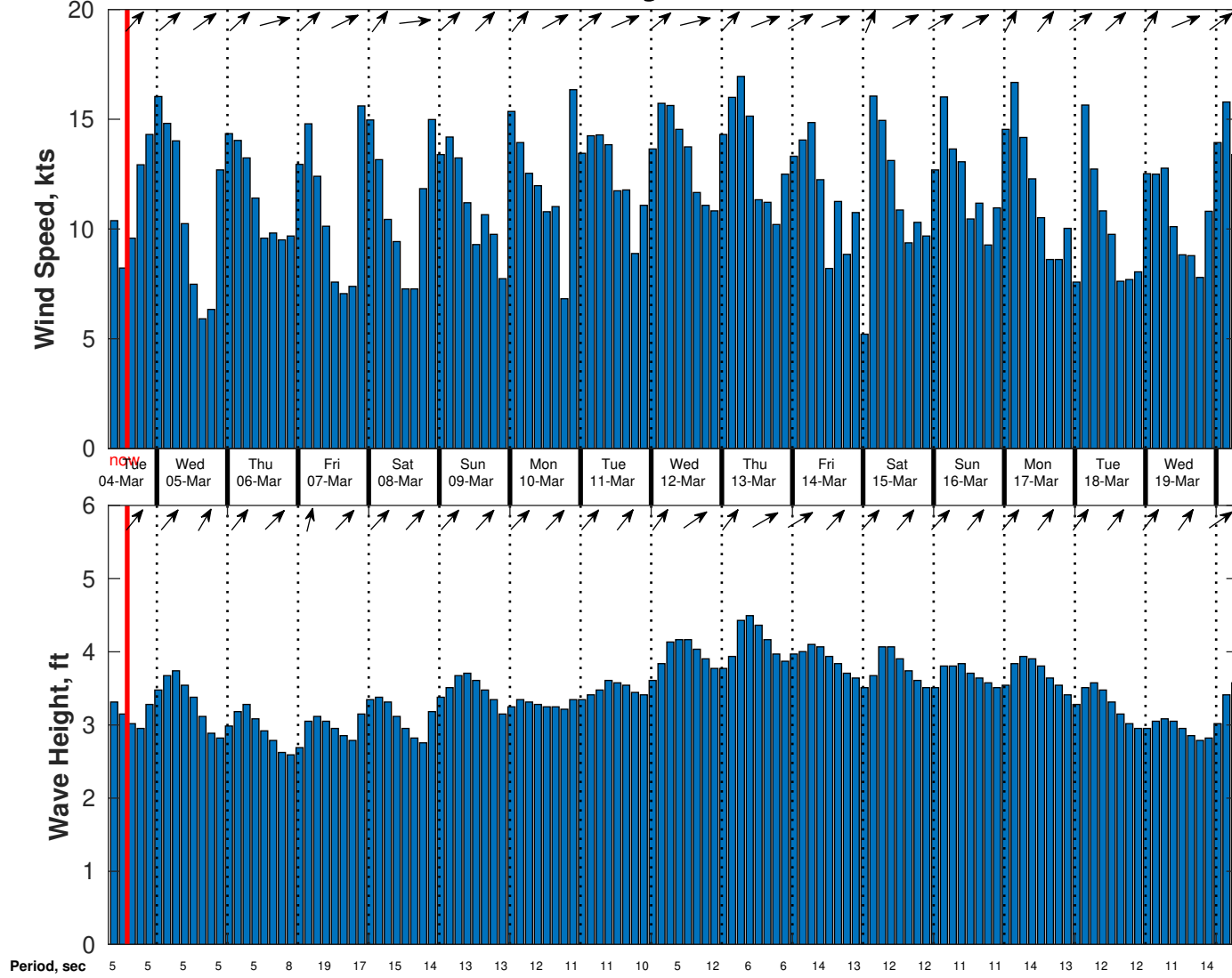
Saturday

Winds: NW, 10-15 kts.  
Waves: NW, 3-4 feet, 15-16 sec.  
No currents available.

Saturday Night

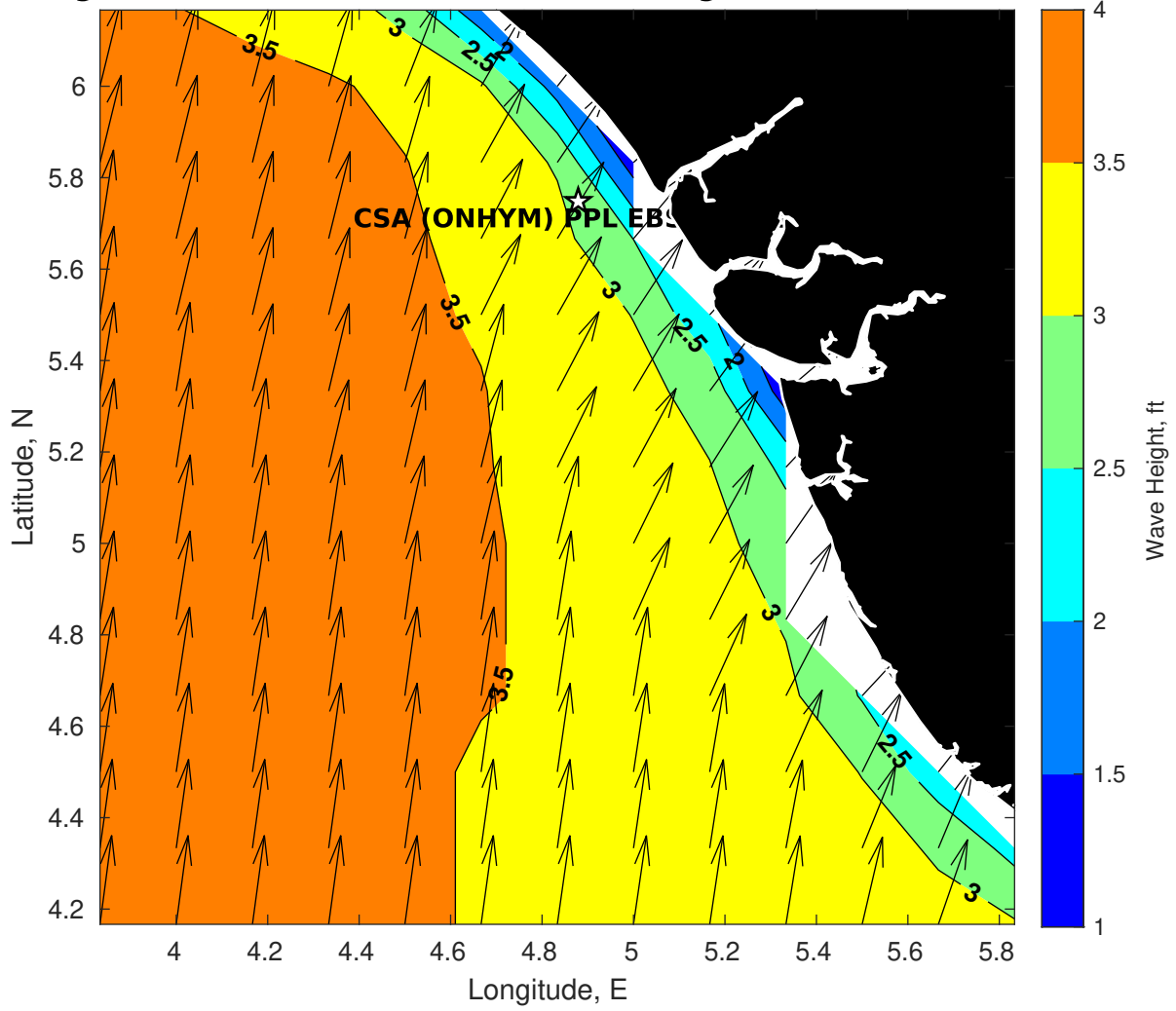
Winds: NW, 10-15 kts.  
Waves: NW, 3-4 feet, 14-15 sec.  
No currents available.

**Wind & Wave Forecast for CSA (ONHYM) PPL EBS - Nigeria from 04-Mar-2025 08:00:00 to 20-Mar-2025 08:00:00**

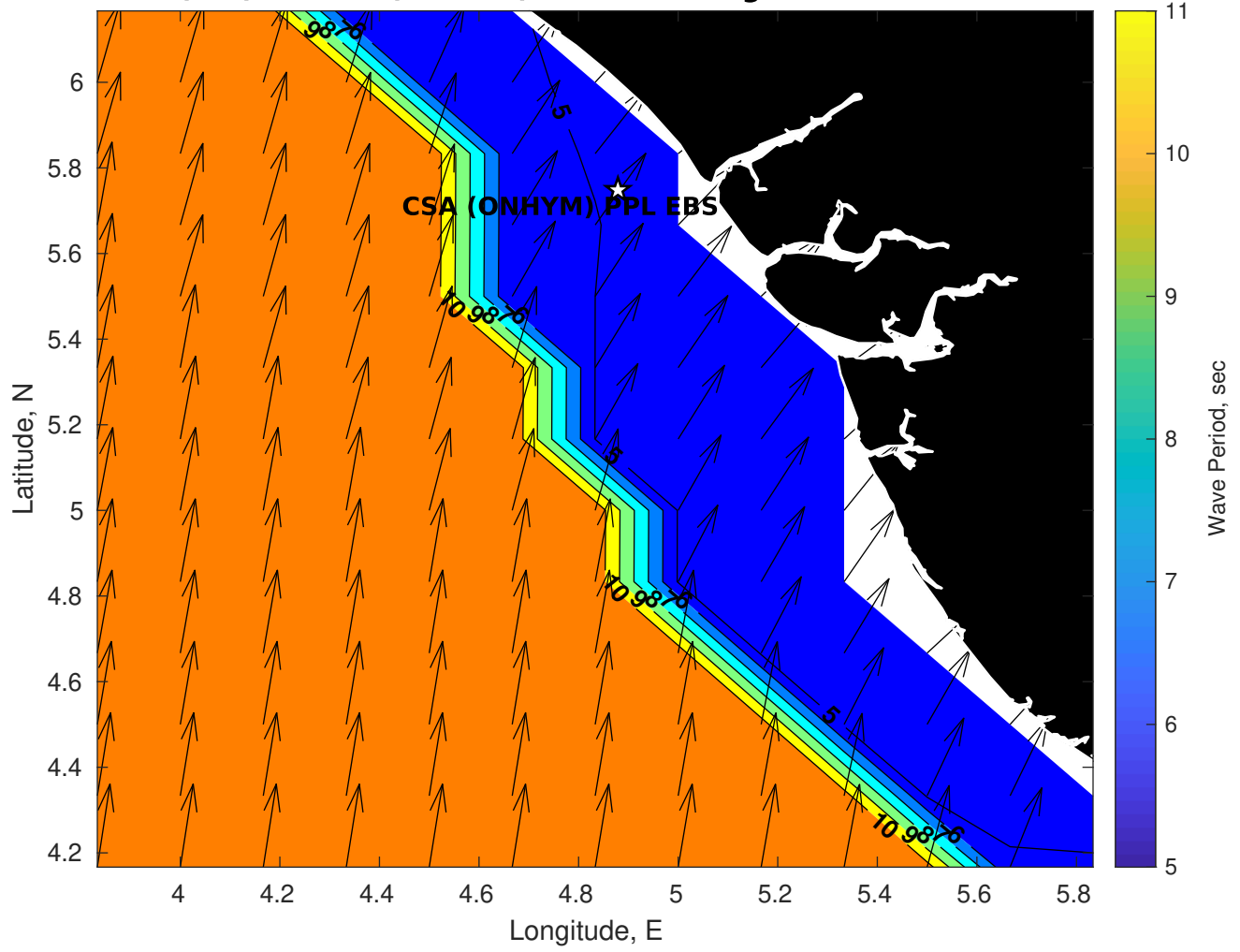




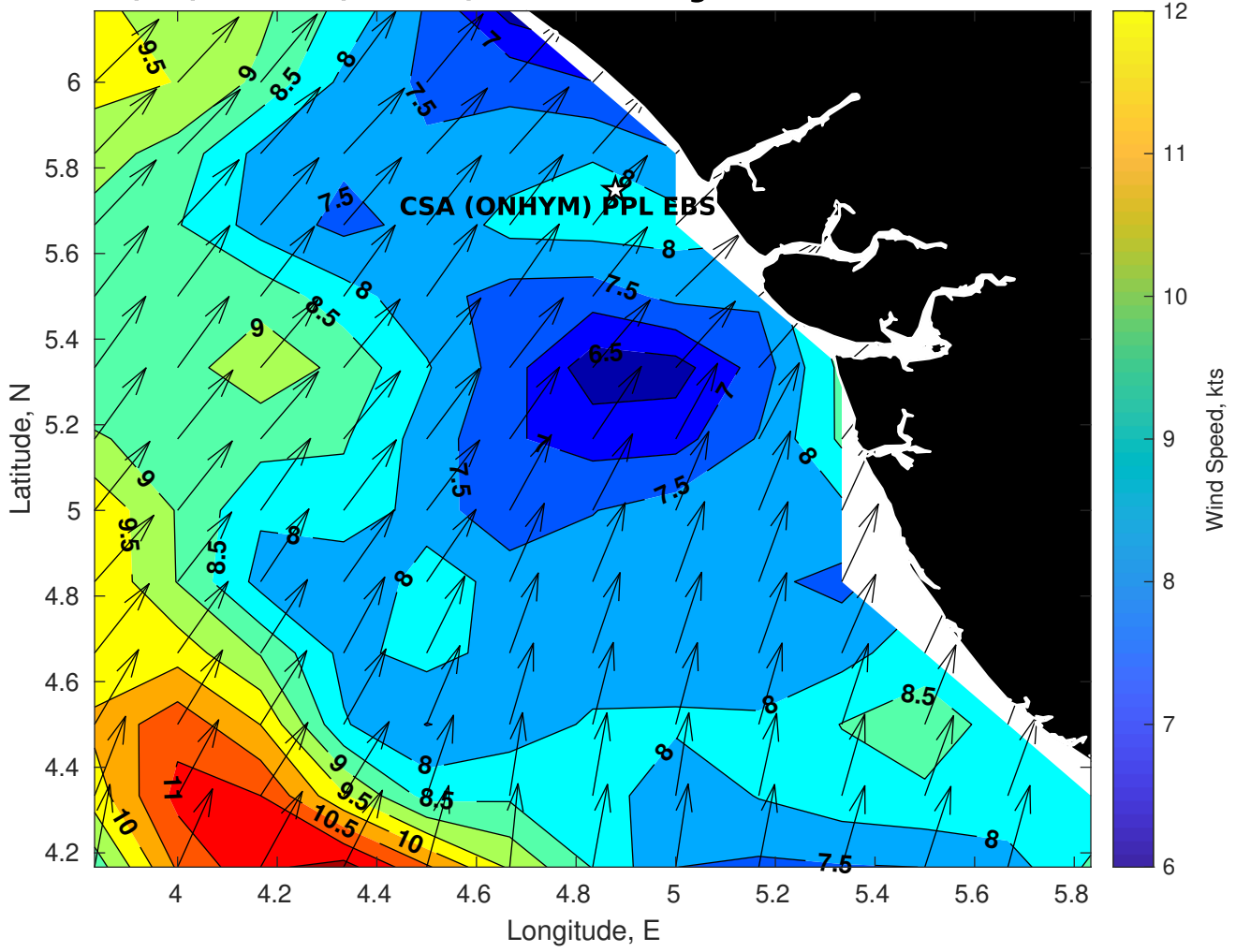
Wave Height (ft) for CSA (ONHYM) PPL EBS - Nigeria at 04-Mar-2025 09:00:00



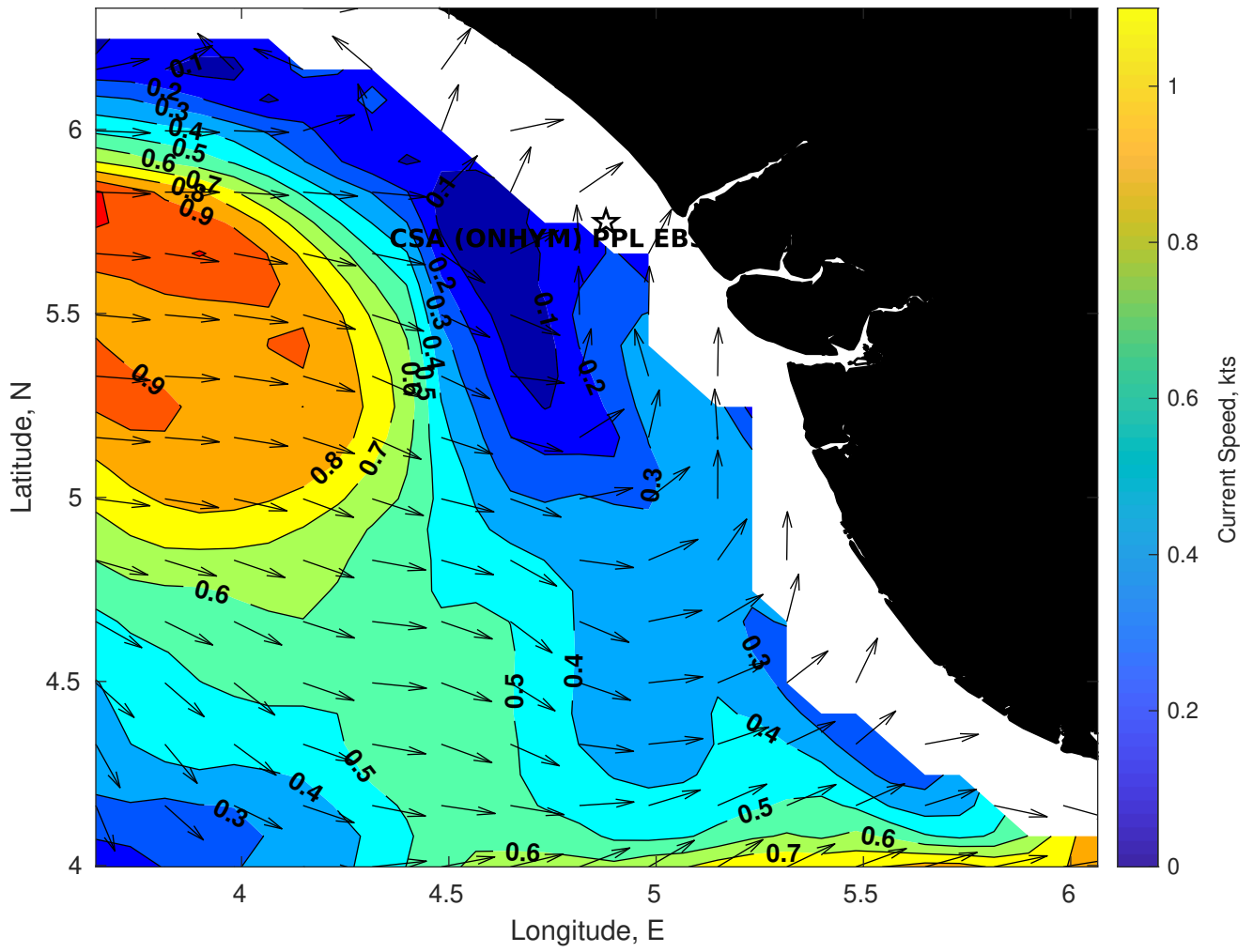
**Wave Period (sec) for CSA (ONHYM) PPL EBS - Nigeria at 04-Mar-2025 09:00:00**



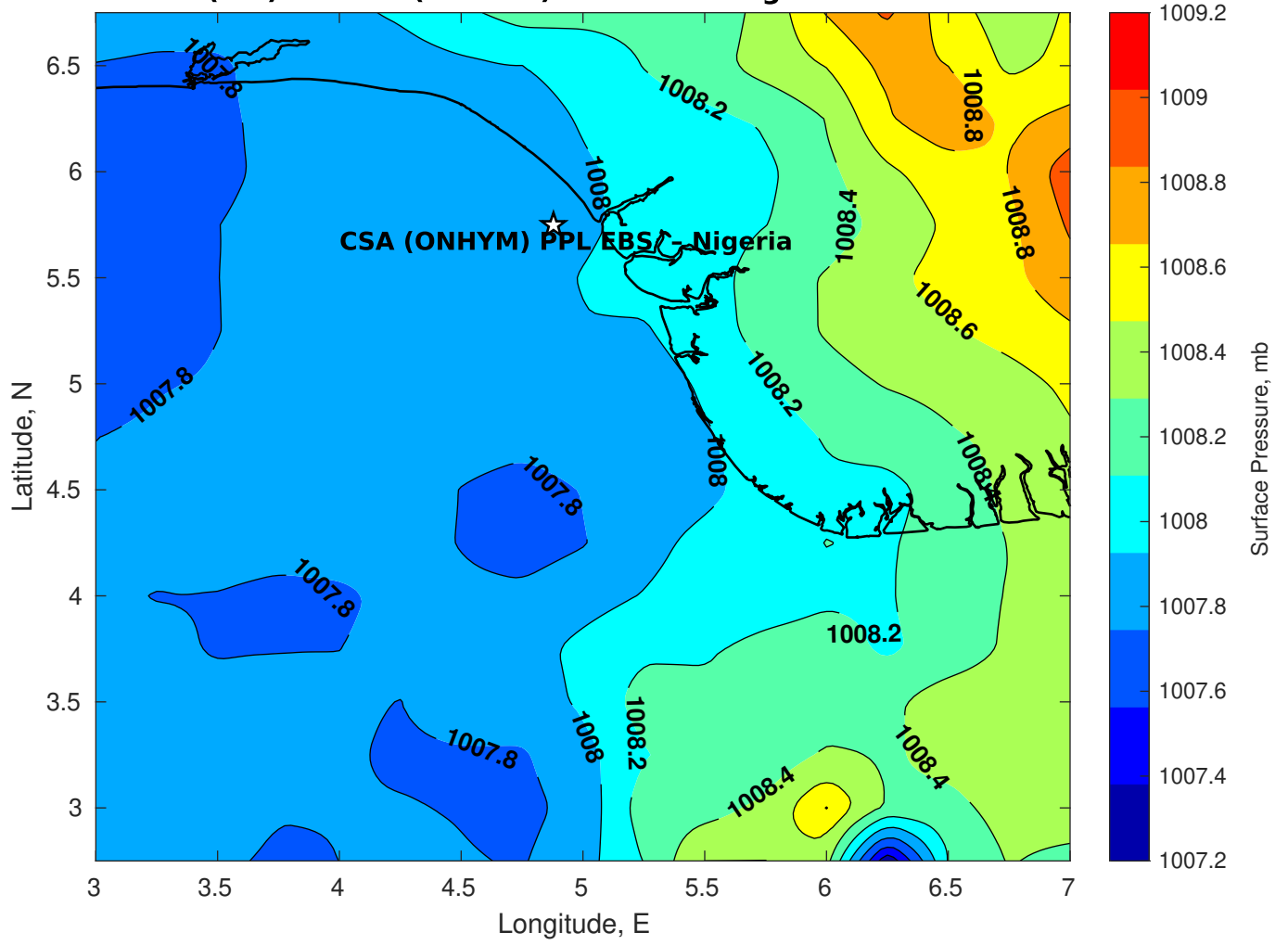
**Winds (kts) for CSA (ONHYM) PPL EBS - Nigeria at 04-Mar-2025 09:00:00**



### Surface Currents for CSA (ONHYM) PPL EBS - Nigeria at 03-Mar-2025 00:00:00

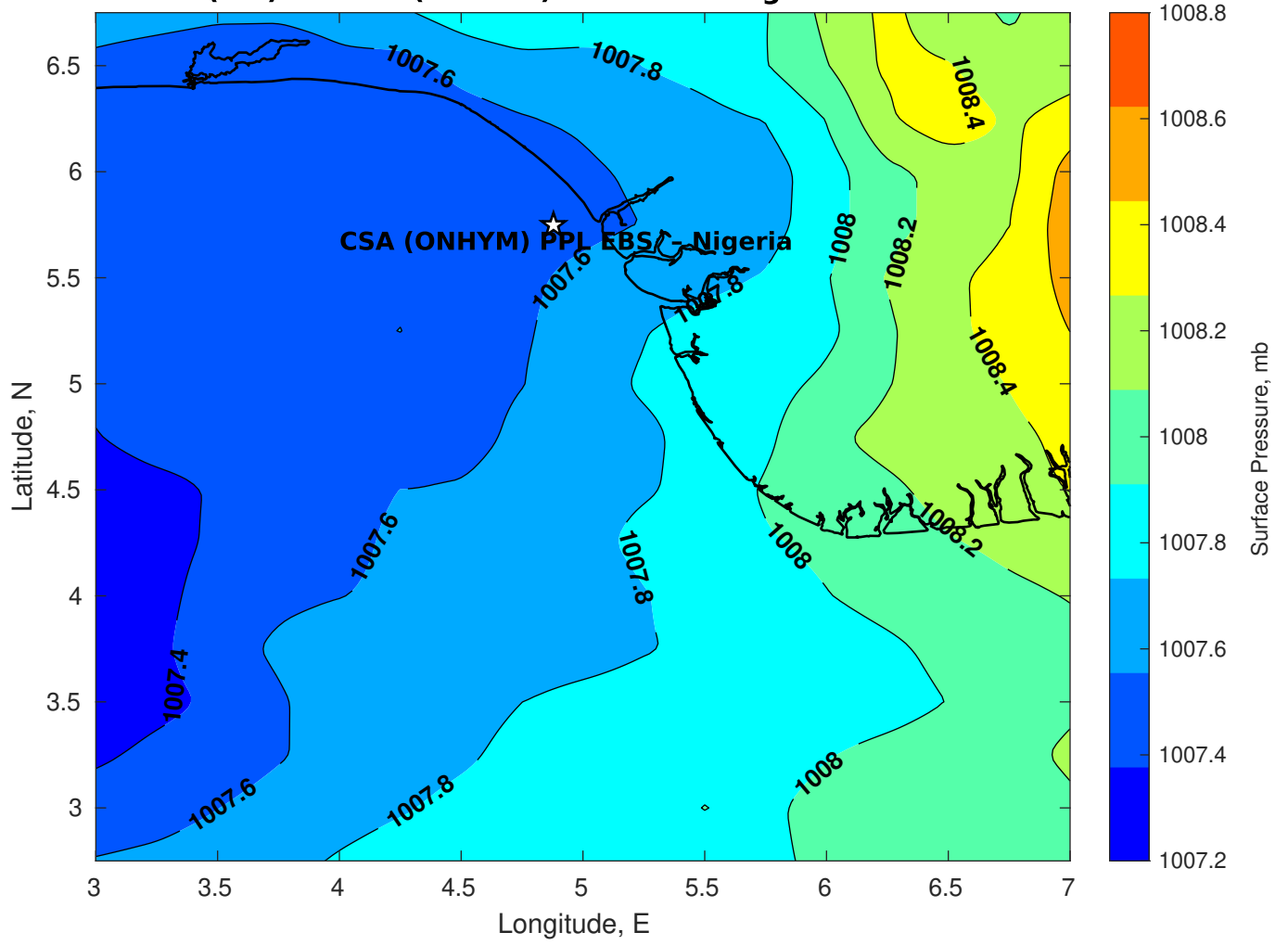


**Surface Pressure (mb) for CSA (ONHYM) PPL EBS - Nigeria at 04-Mar-2025 06:00:00**

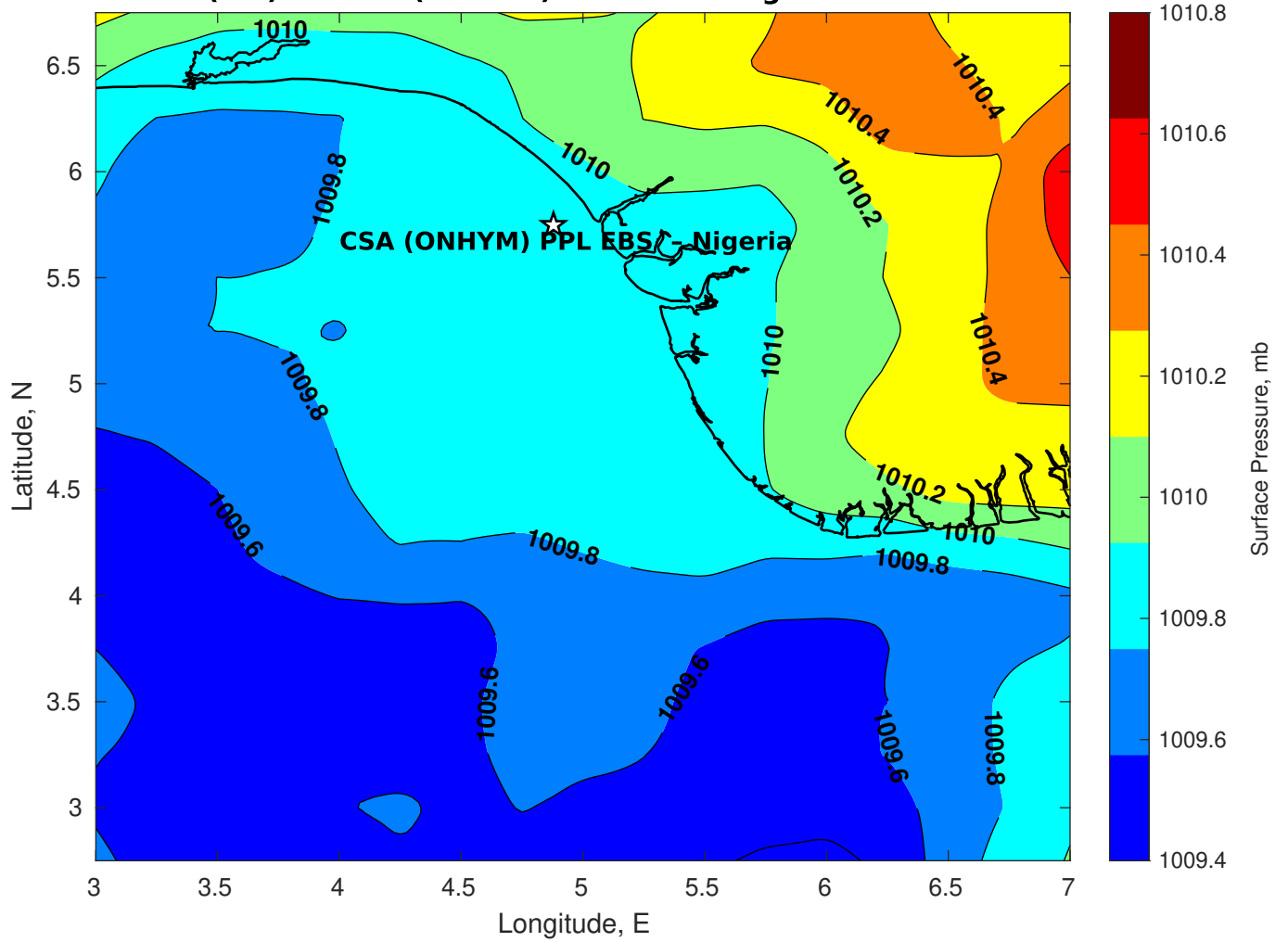




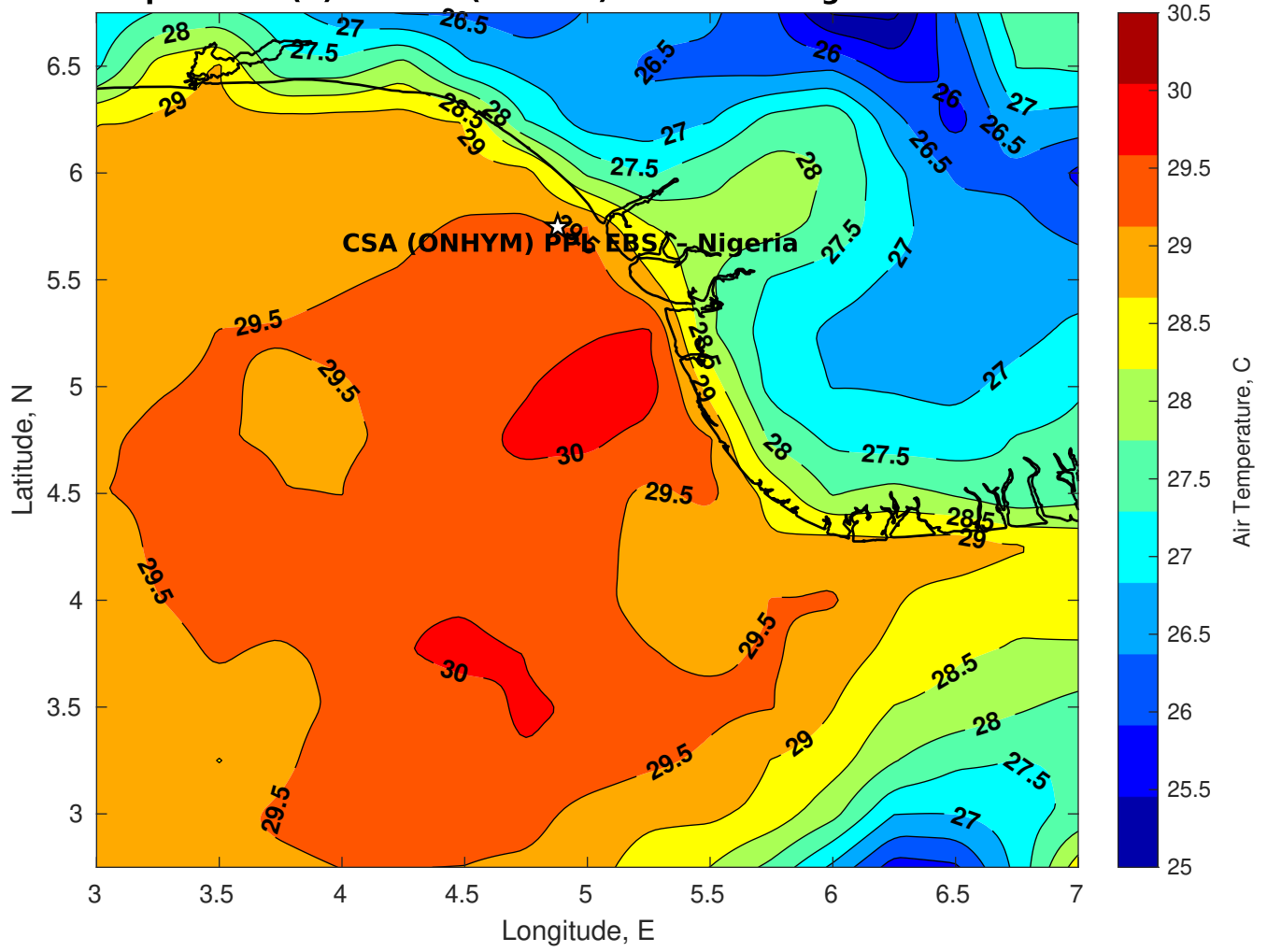
**Surface Pressure (mb) for CSA (ONHYM) PPL EBS - Nigeria at 05-Mar-2025 06:00:00**



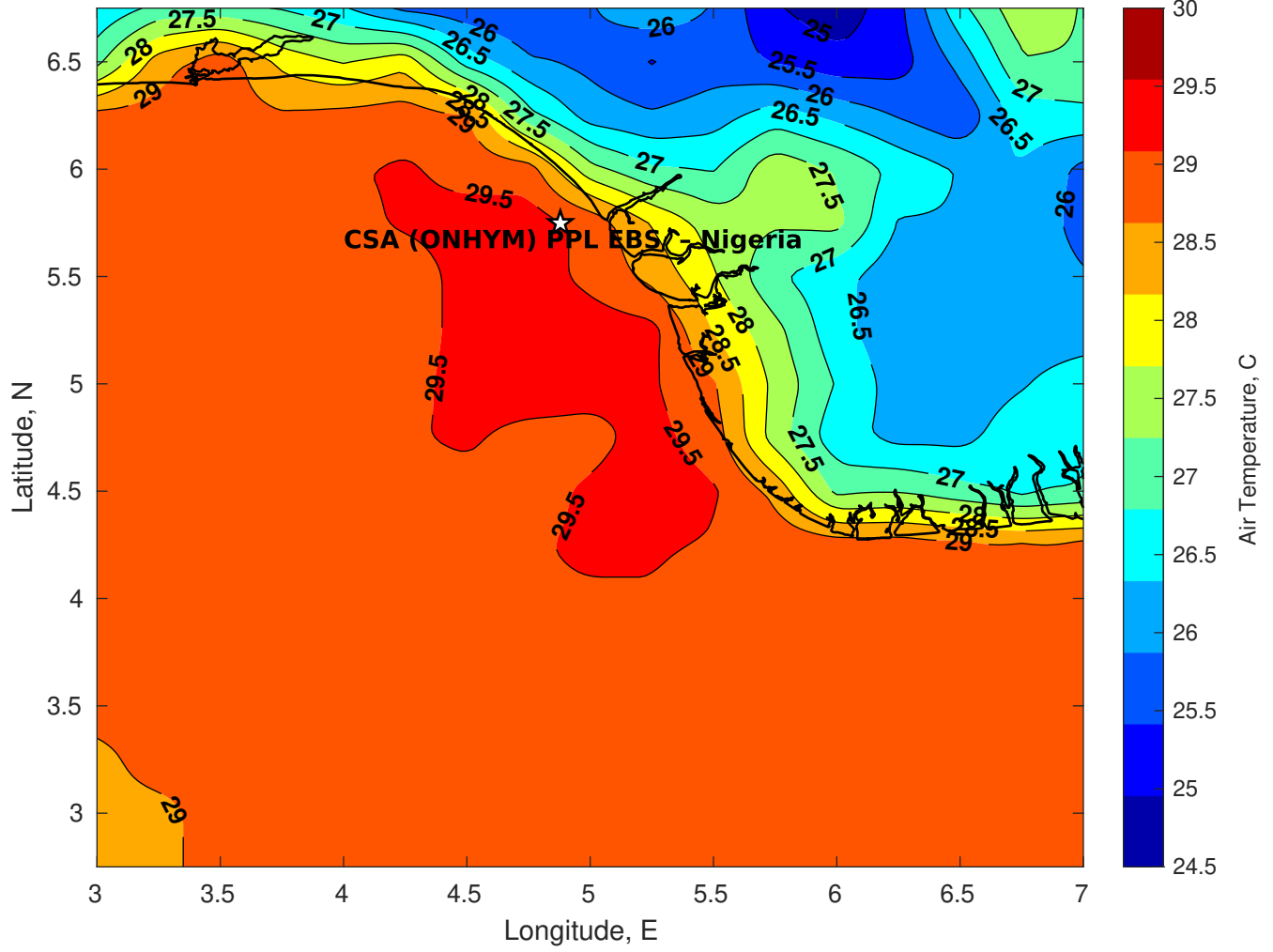
Surface Pressure (mb) for CSA (ONHYM) PPL EBS - Nigeria at 06-Mar-2025 06:00:00



**Air Temperature (C) for CSA (ONHYM) PPL EBS - Nigeria at 04-Mar-2025**



**Air Temperature (C) for CSA (ONHYM) PPL EBS - Nigeria at 04-Mar-2025**



**Air Temperature (C) for CSA (ONHYM) PPL EBS - Nigeria at 04-Mar-2025**

