
Marine Weather Forecast for TOTAL Namibia GTS

Forecast valid as of 05-Mar-2025 0900 GMT

All times are local.

Today

Winds: N, 10-15 kts.

Waves: NW, 6-7 feet, 14-15 sec.

No currents available.

Tonight

Winds: NE, 10-15 kts.

Waves: NW, 6-7 feet, 13-14 sec.

No currents available.

Thursday

Winds: NE, 15-20 kts.

Waves: NW, 5-6 feet, 12-13 sec.

No currents available.

Thursday Night

Winds: NE, 15-20 kts.

Waves: NW, 5-6 feet, 11-12 sec.

No currents available.

Friday

Winds: NE, 15-20 kts.

Waves: NW, 6-7 feet, 10-11 sec.

No currents available.

Friday Night

Winds: NE, 15-20 kts.

Waves: NW, 7-8 feet, 13-14 sec.

No currents available.

Saturday

Winds: NE, 15-20 kts.

Waves: NW, 7-8 feet, 13-14 sec.

No currents available.

Saturday Night

Winds: N, 10-15 kts.

Waves: NW, 7-8 feet, 12-13 sec.

No currents available.

Sunday

Winds: N, 15-20 kts.

Waves: NW, 6-7 feet, 13-14 sec.

No currents available.

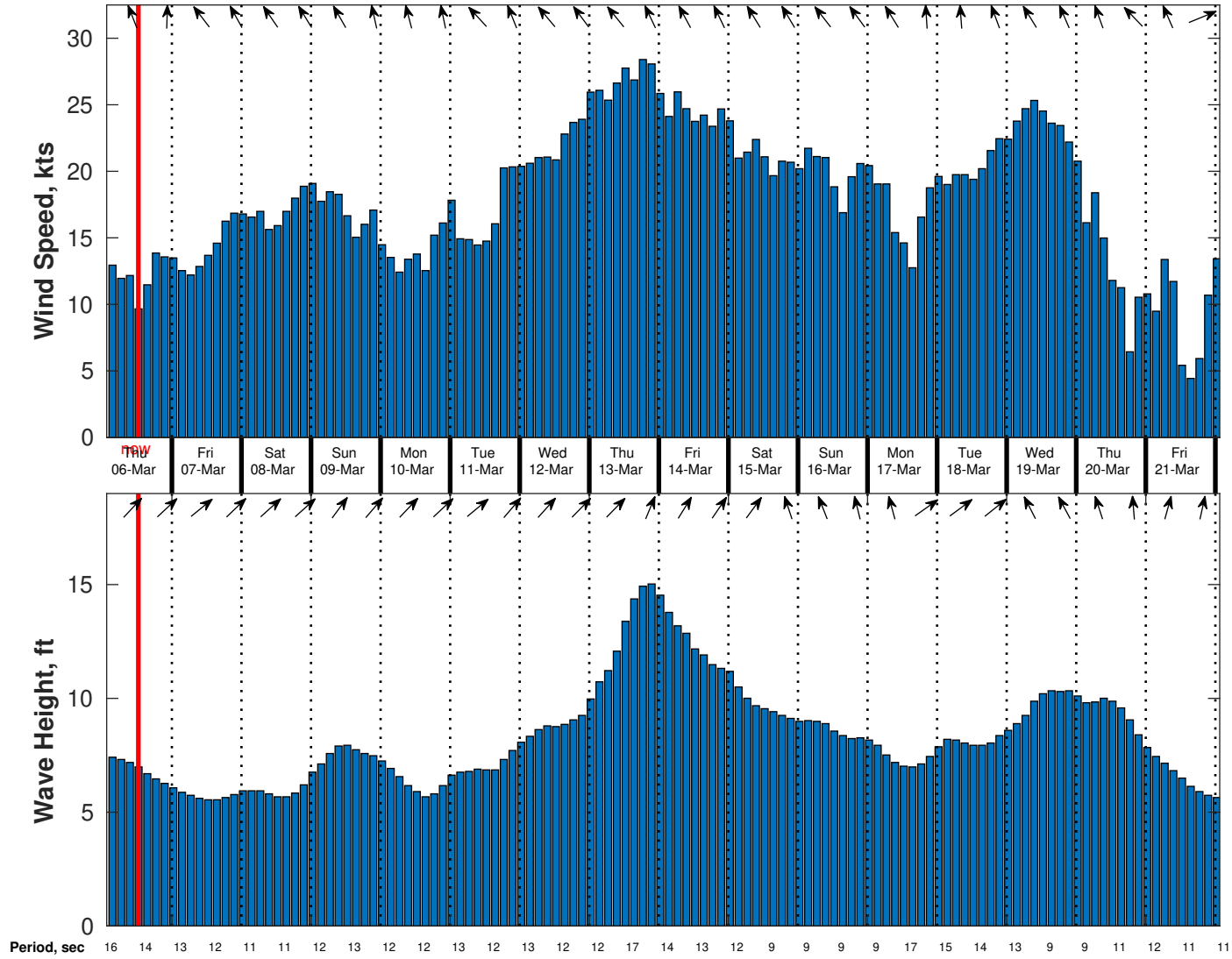
Sunday Night

Winds: NE, 15-20 kts.

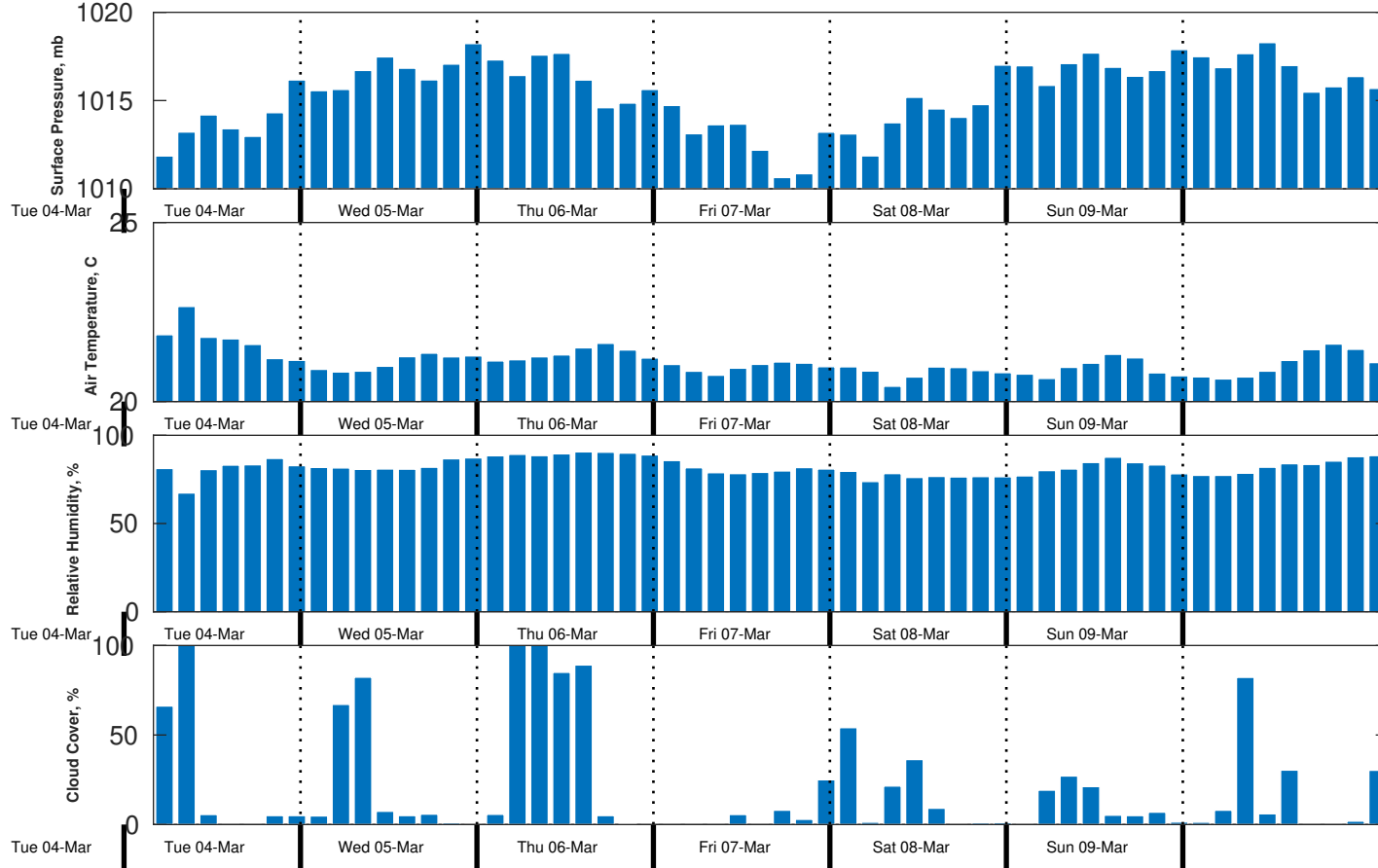
Waves: NW, 6-7 feet, 13-14 sec.

No currents available.

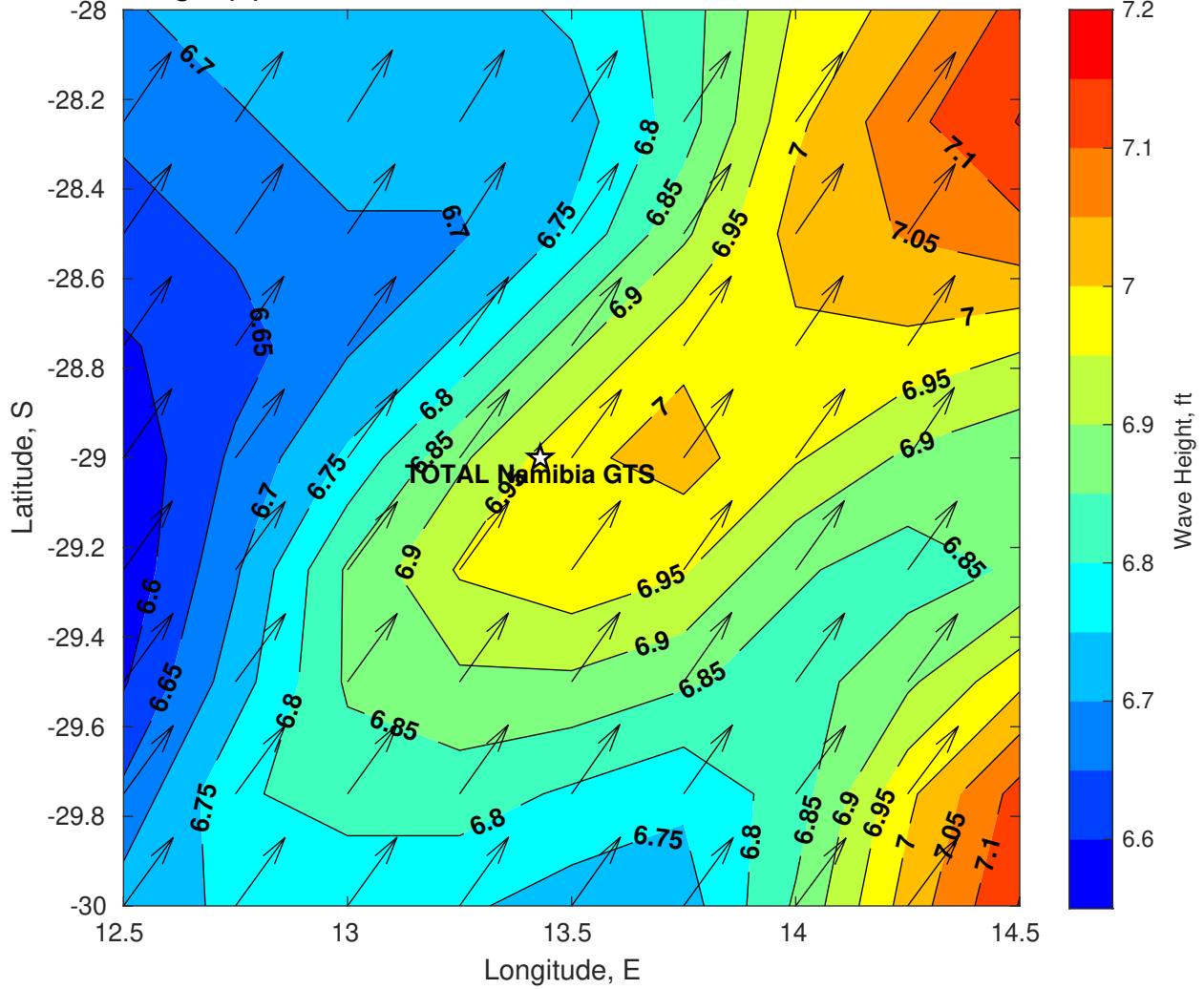
Wind & Wave Forecast for TOTAL Namibia GTS from 05-Mar-2025 02:00:00 to 21-Mar-2025 02:00:00



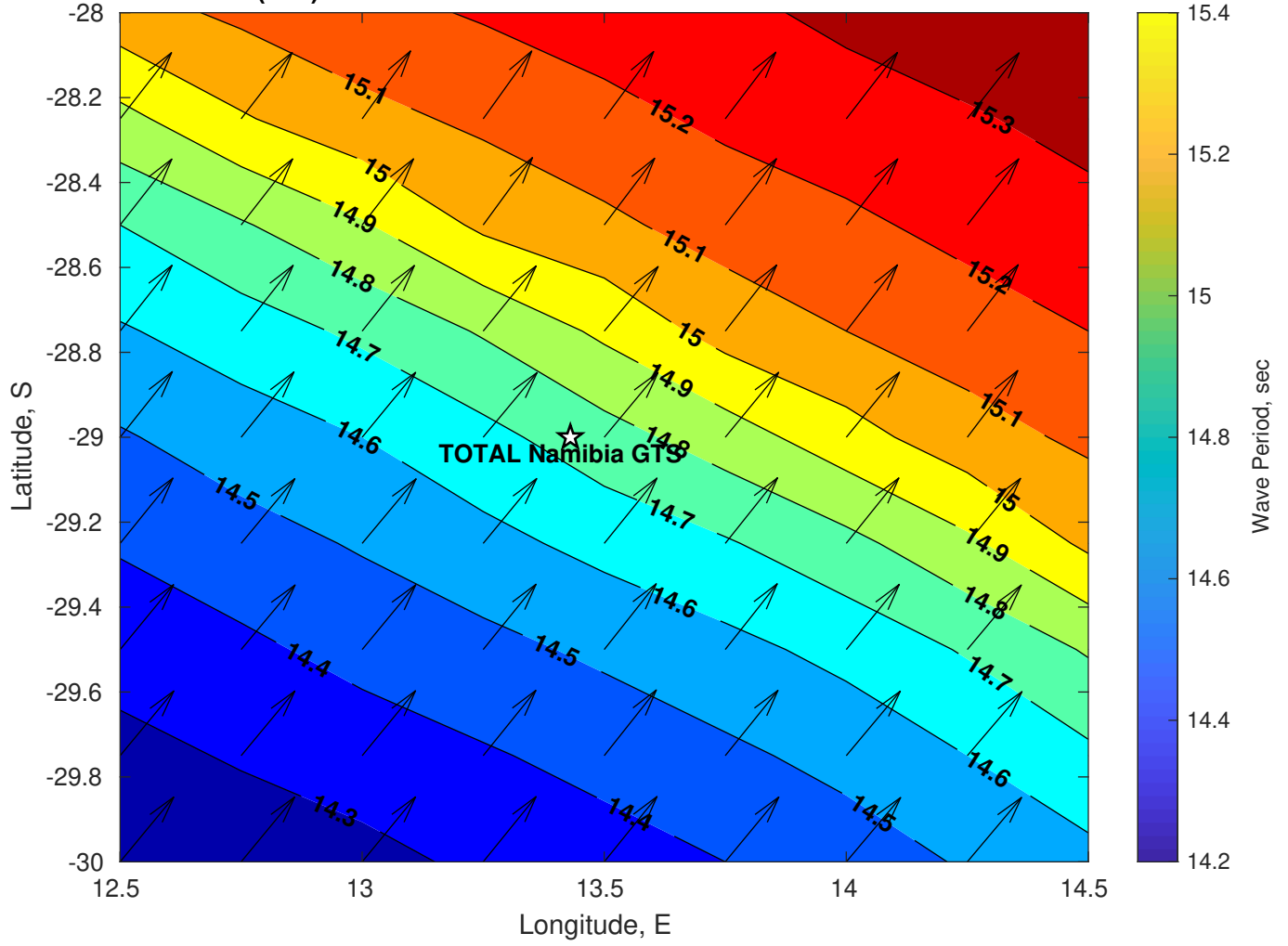
Met Forecast for TOTAL Namibia GTS from 05-Mar-2025 00:00:00 to 12-Mar-2025 00:00:00



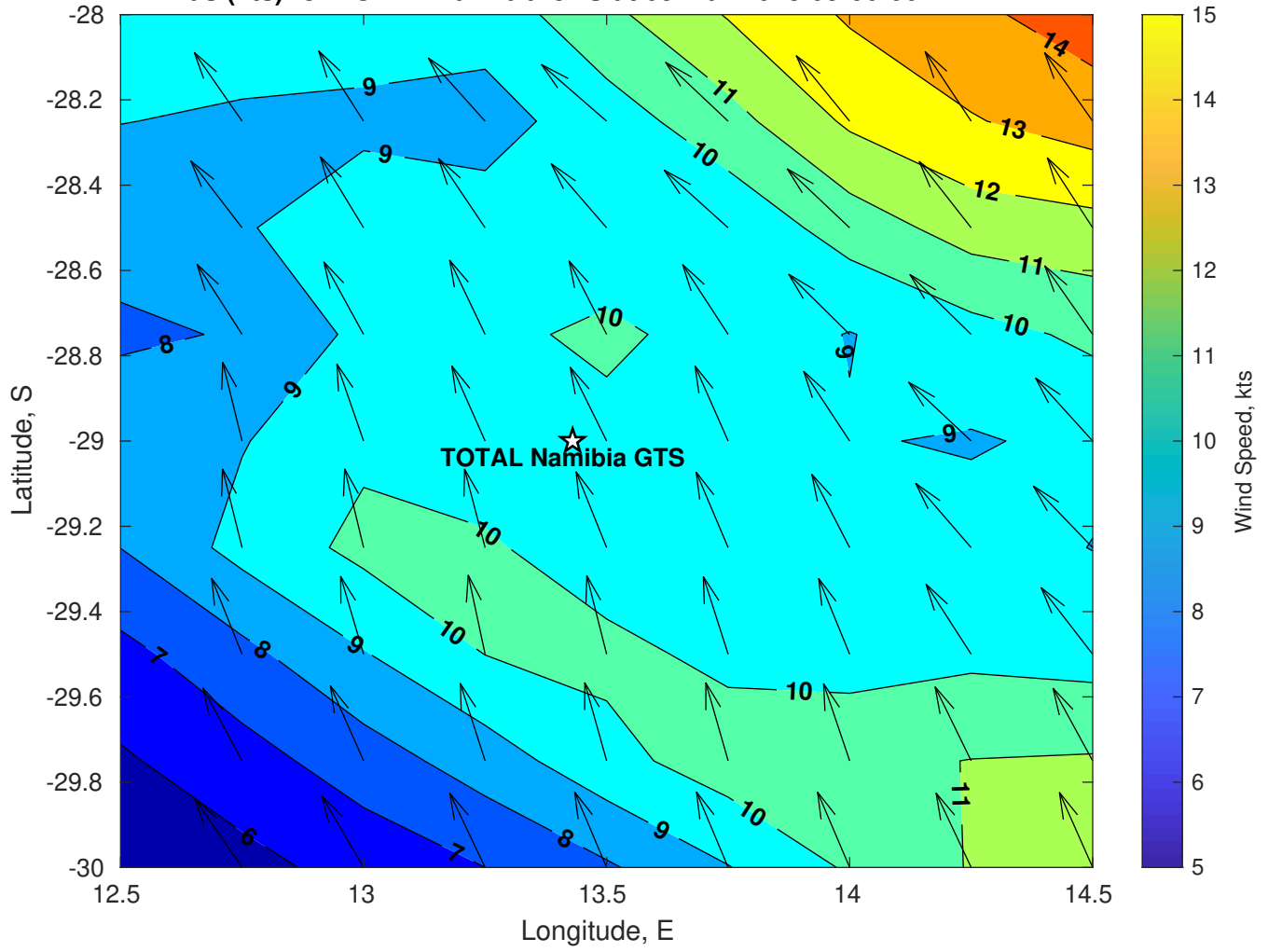
Wave Height (ft) for TOTAL Namibia GTS at 05-Mar-2025 09:00:00



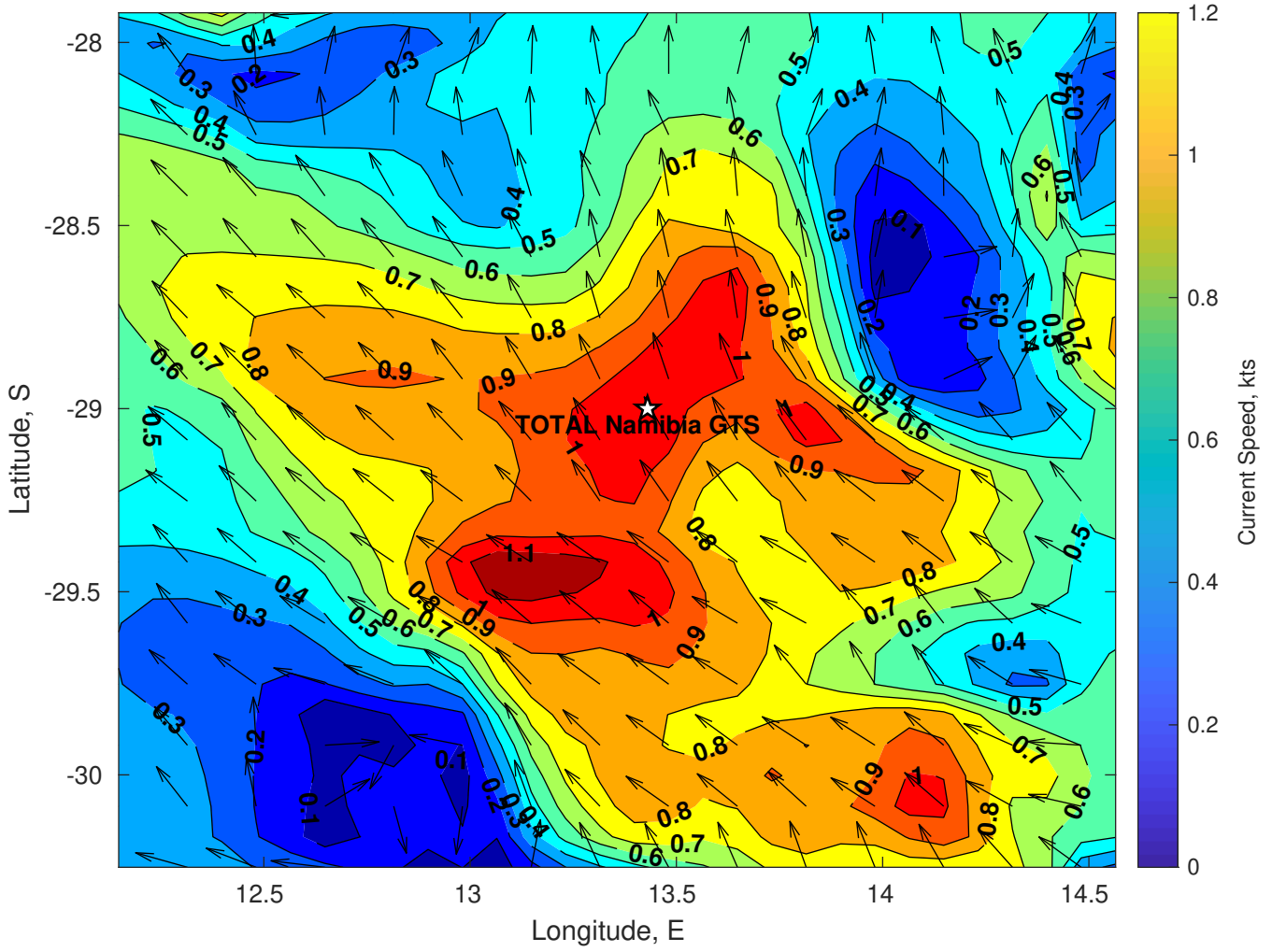
Wave Period (sec) for TOTAL Namibia GTS at 05-Mar-2025 09:00:00



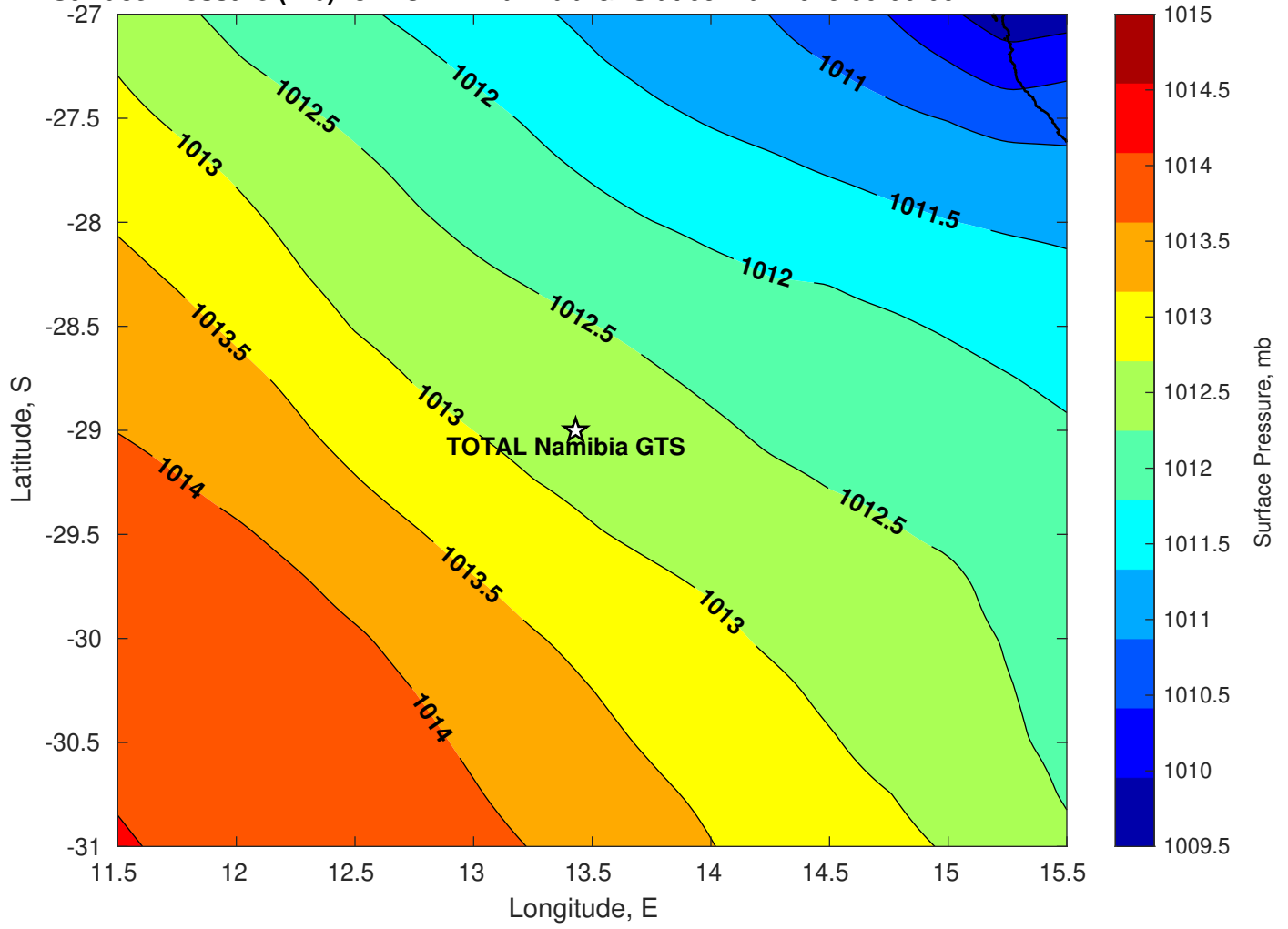
Winds (kts) for TOTAL Namibia GTS at 05-Mar-2025 09:00:00



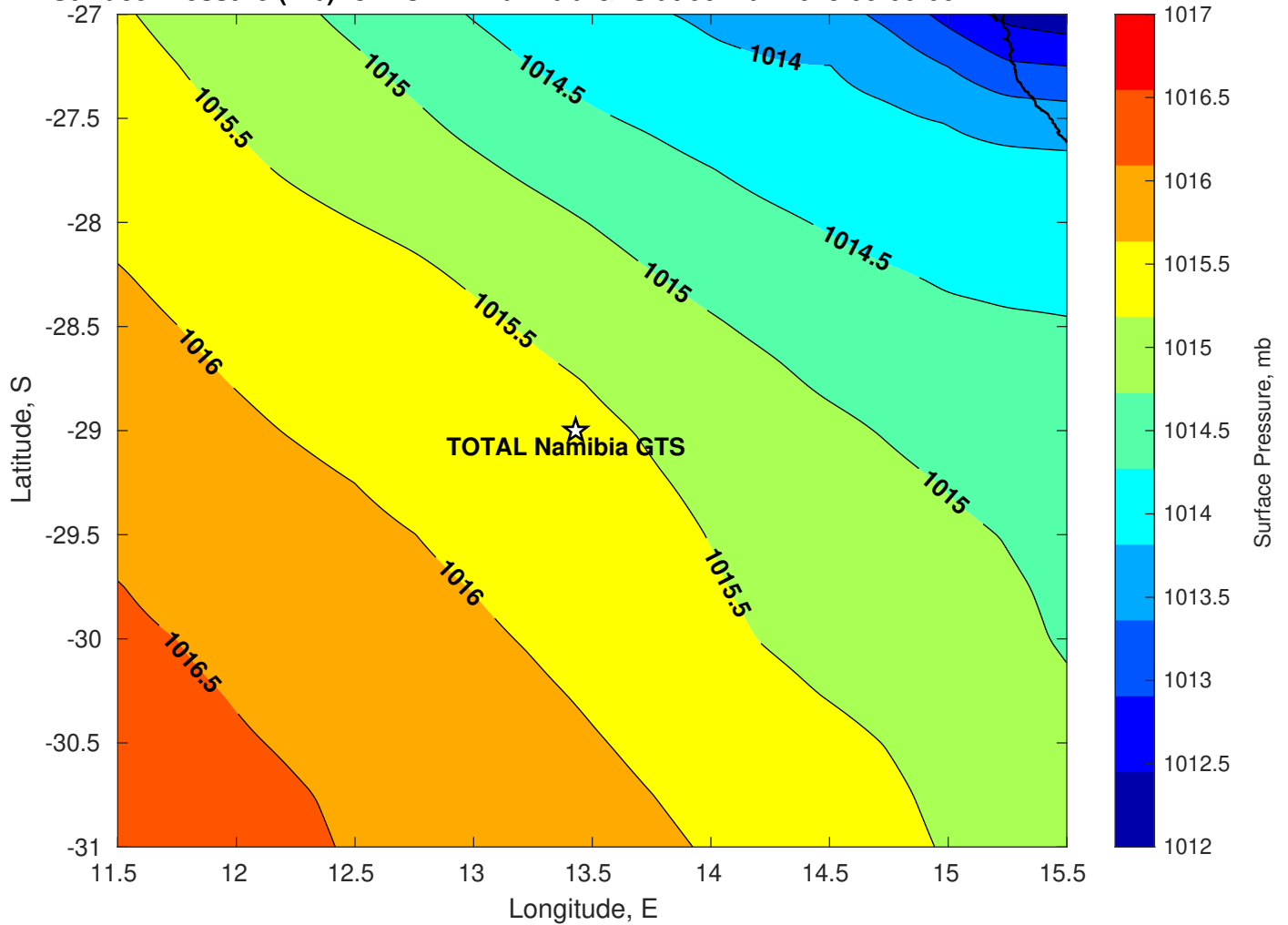
Surface Currents for TOTAL Namibia GTS at 04-Mar-2025 00:00:00



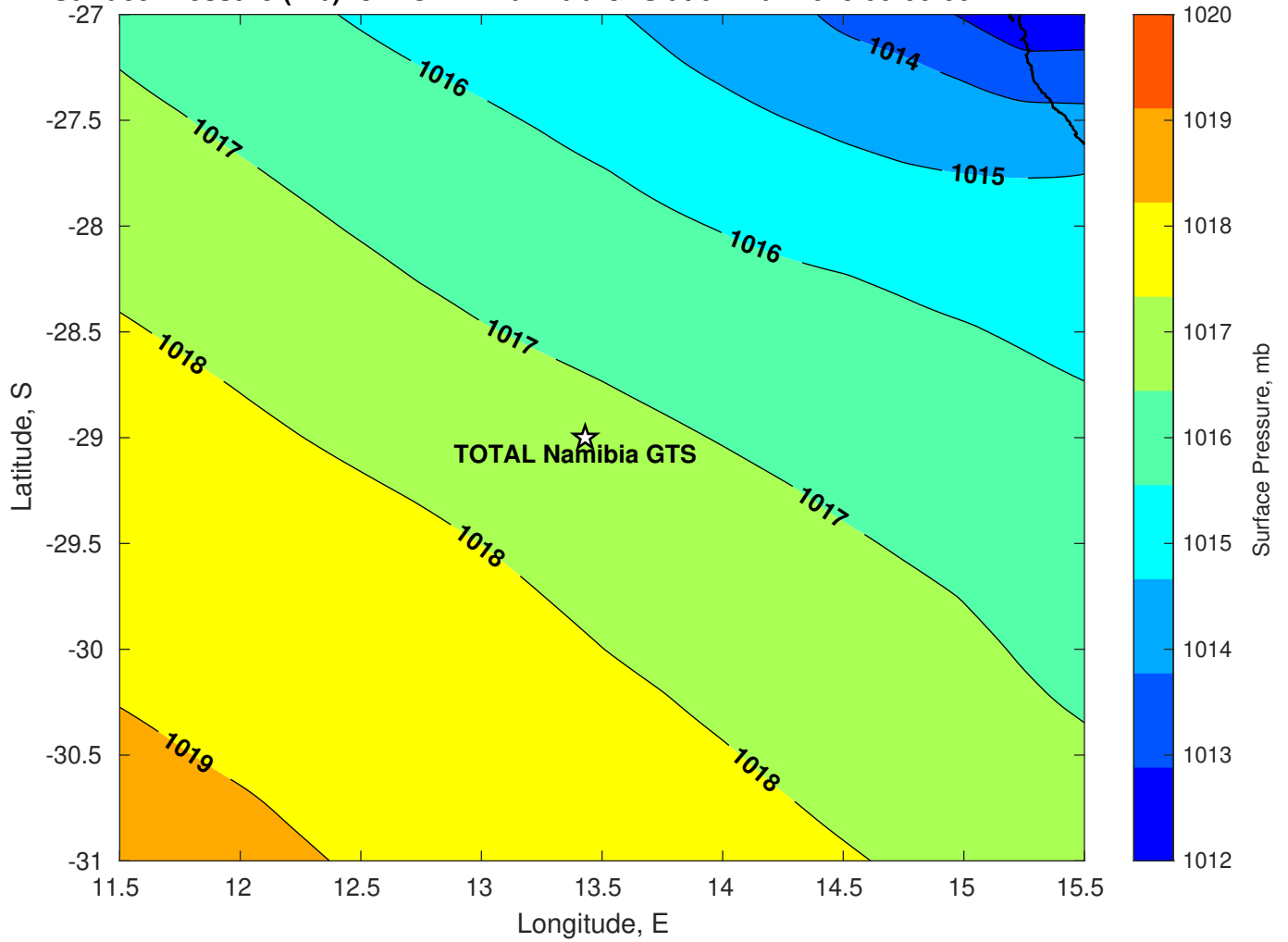
Surface Pressure (mb) for TOTAL Namibia GTS at 05-Mar-2025 00:00:00



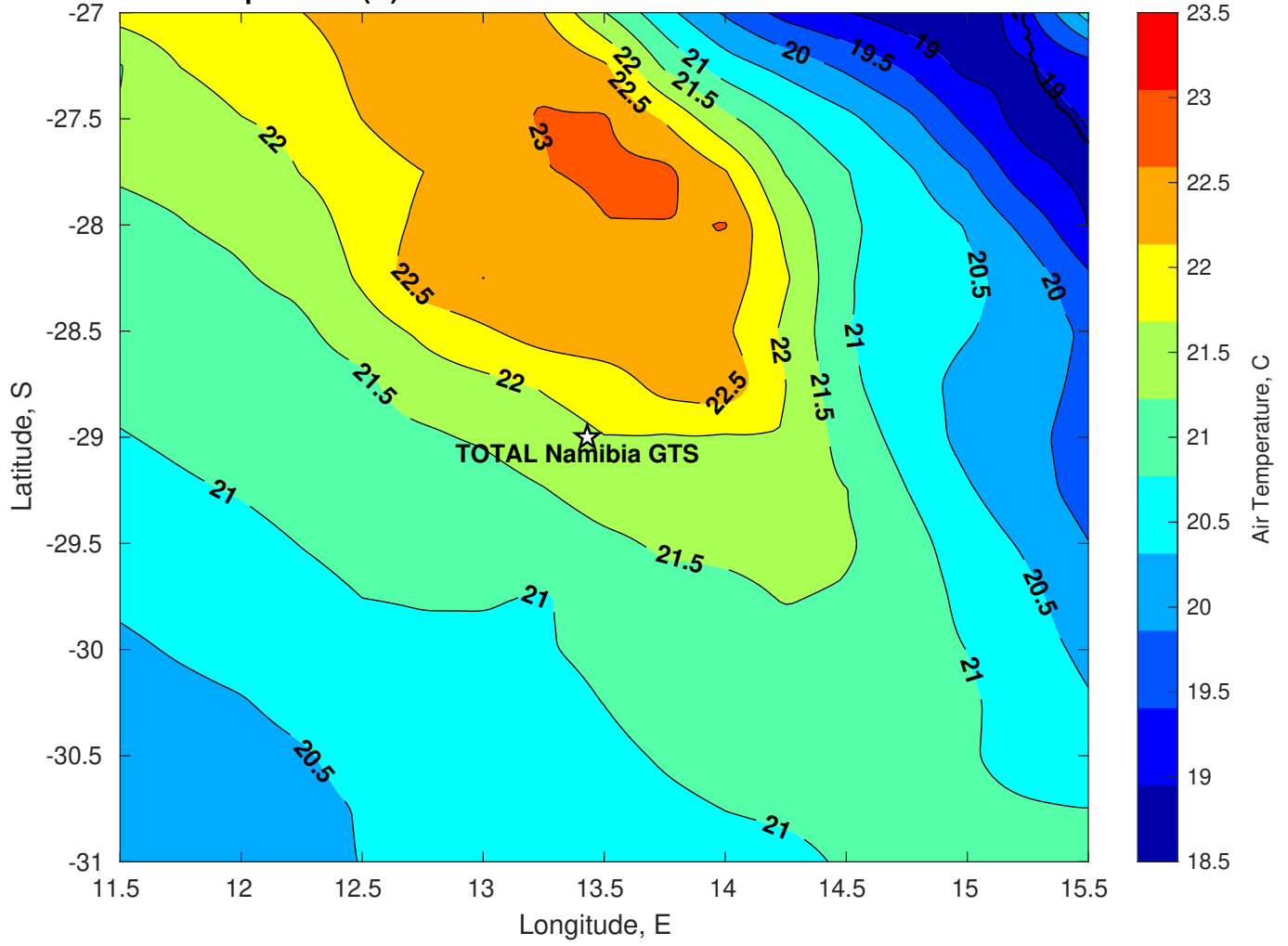
Surface Pressure (mb) for TOTAL Namibia GTS at 06-Mar-2025 00:00:00



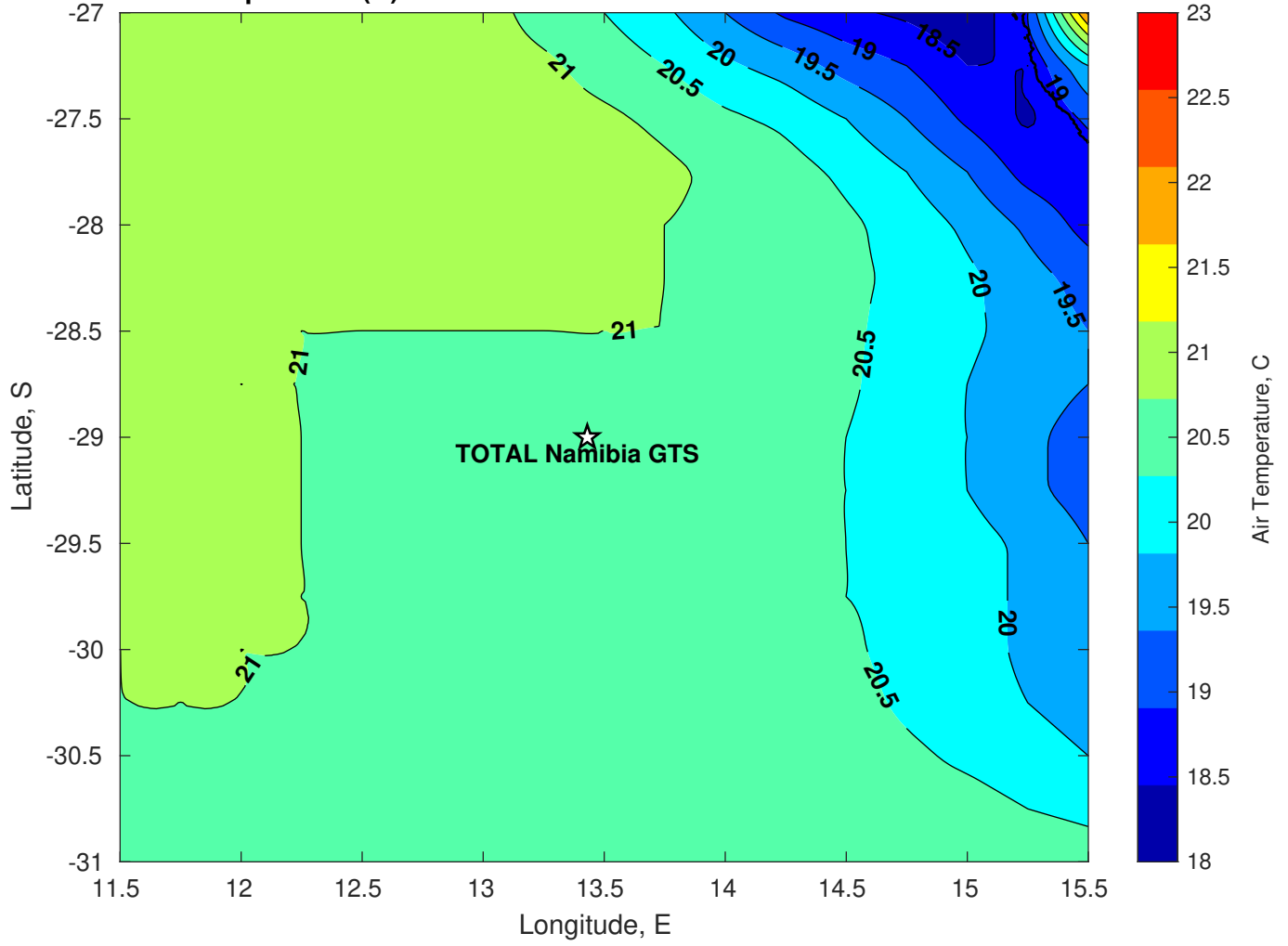
Surface Pressure (mb) for TOTAL Namibia GTS at 07-Mar-2025 00:00:00



Air Temperature (C) for TOTAL Namibia GTS at 05-Mar-2025



Air Temperature (C) for TOTAL Namibia GTS at 05-Mar-2025



Air Temperature (C) for TOTAL Namibia GTS at 05-Mar-2025

