
Marine Weather Forecast for CSA (ONHYM) PPL EBS - Guinea

Forecast valid as of 07-Mar-2025 0900 GMT

All times are local.

Today

Winds: NW, 10-15 kts.

Waves: NW, 1-2 feet, 4-5 sec.

No currents available.

Tonight

Winds: W, 5-10 kts.

Waves: W, 0-1 feet, 3-4 sec.

No currents available.

Saturday

Winds: NW, 10-15 kts.

Waves: NW, 1-2 feet, 4-5 sec.

No currents available.

Saturday Night

Winds: W, 5-10 kts.

Waves: W, 1-2 feet, 4-5 sec.

No currents available.

Sunday

Winds: E, 10-15 kts.

Waves: NW, 1-2 feet, 4-5 sec.

No currents available.

Sunday Night

Winds: W, 5-10 kts.

Waves: W, 1-2 feet, 4-5 sec.

No currents available.

Monday

Winds: NW, 10-15 kts.

Waves: NW, 1-2 feet, 4-5 sec.

No currents available.

Monday Night

Winds: W, 5-10 kts.

Waves: W, 1-2 feet, 4-5 sec.

No currents available.

Tuesday

Winds: NE, 10-15 kts.

Waves: NW, 1-2 feet, 10-11 sec.

No currents available.

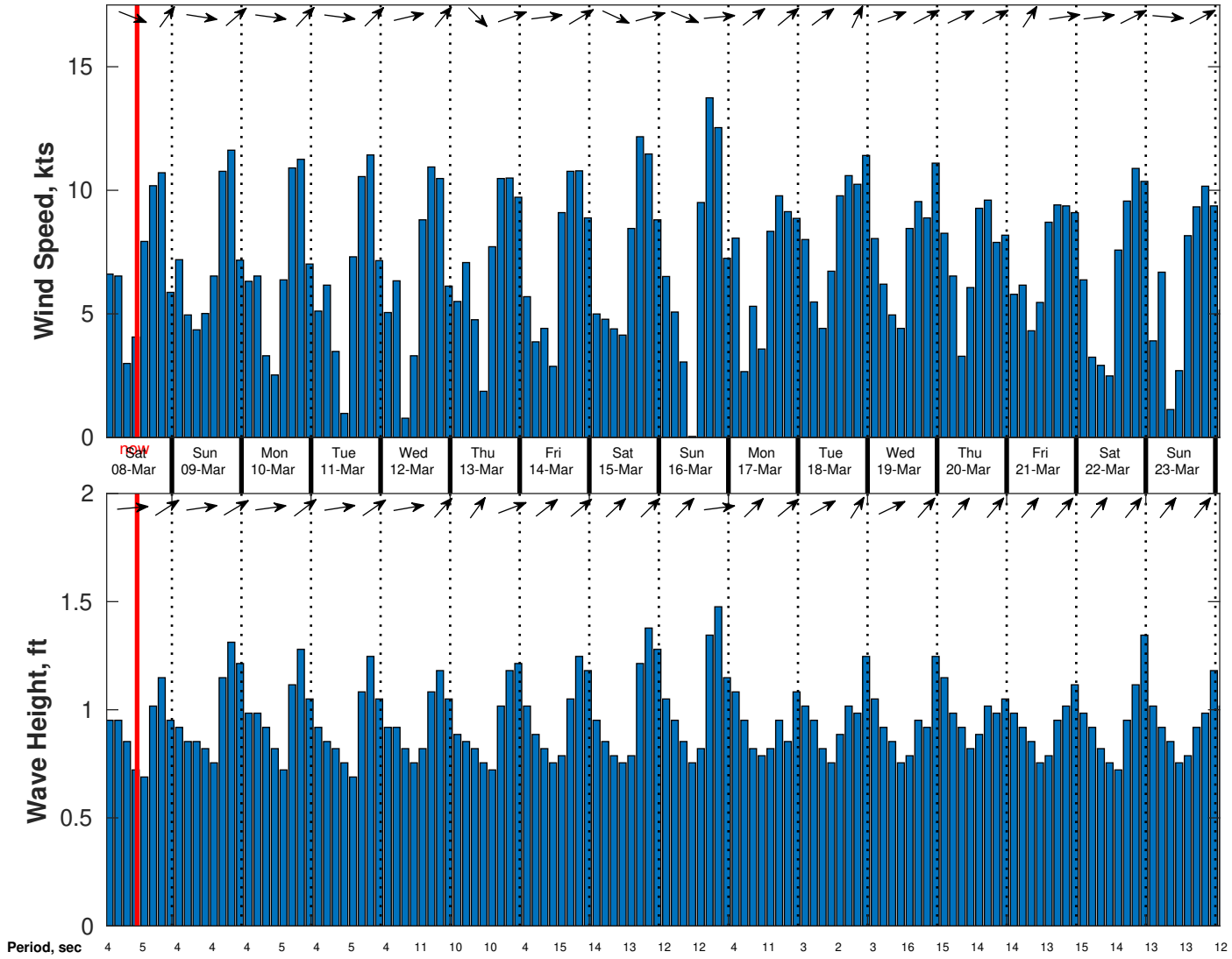
Tuesday Night

Winds: NW, 5-10 kts.

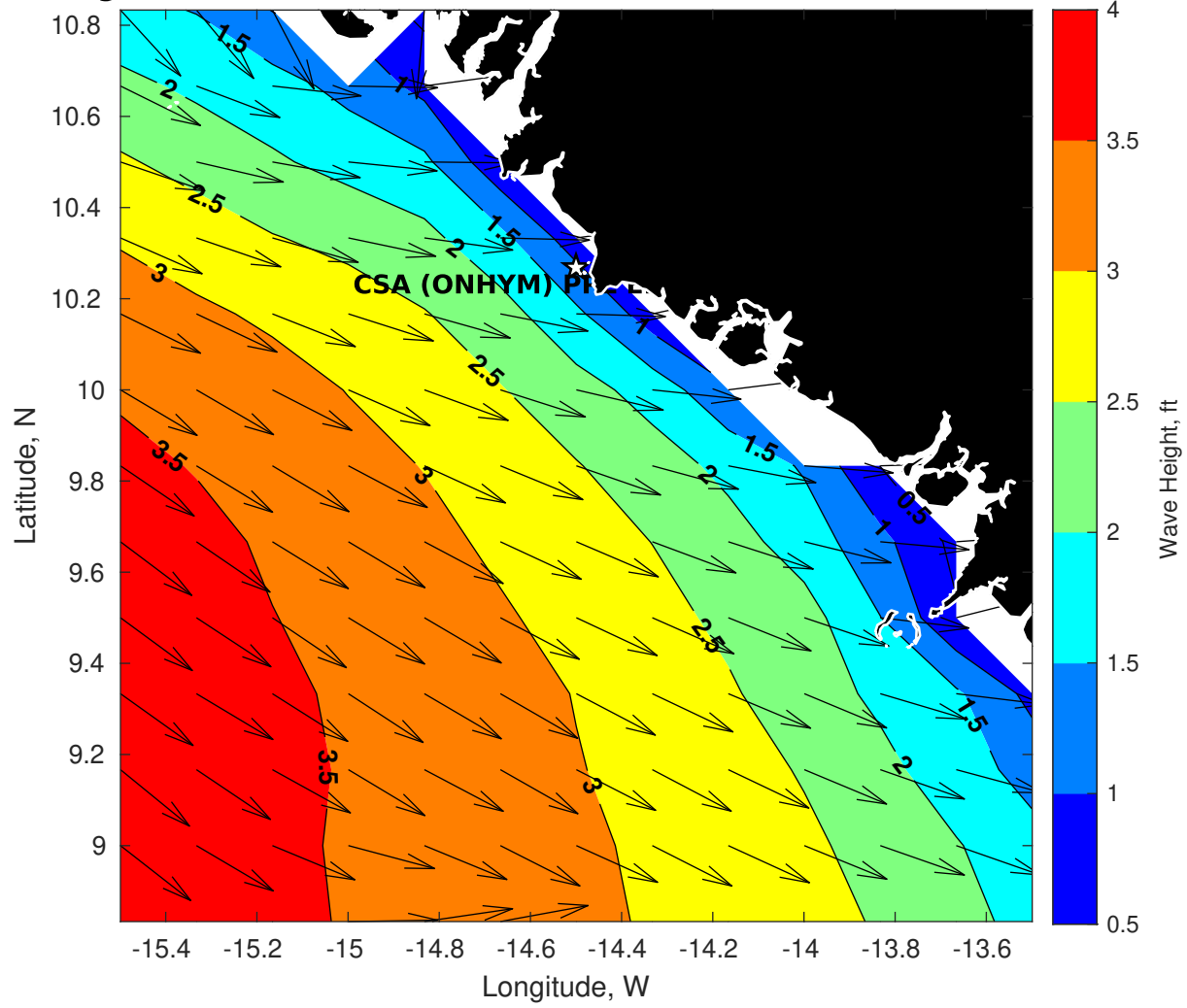
Waves: NW, 1-2 feet, 9-10 sec.

No currents available.

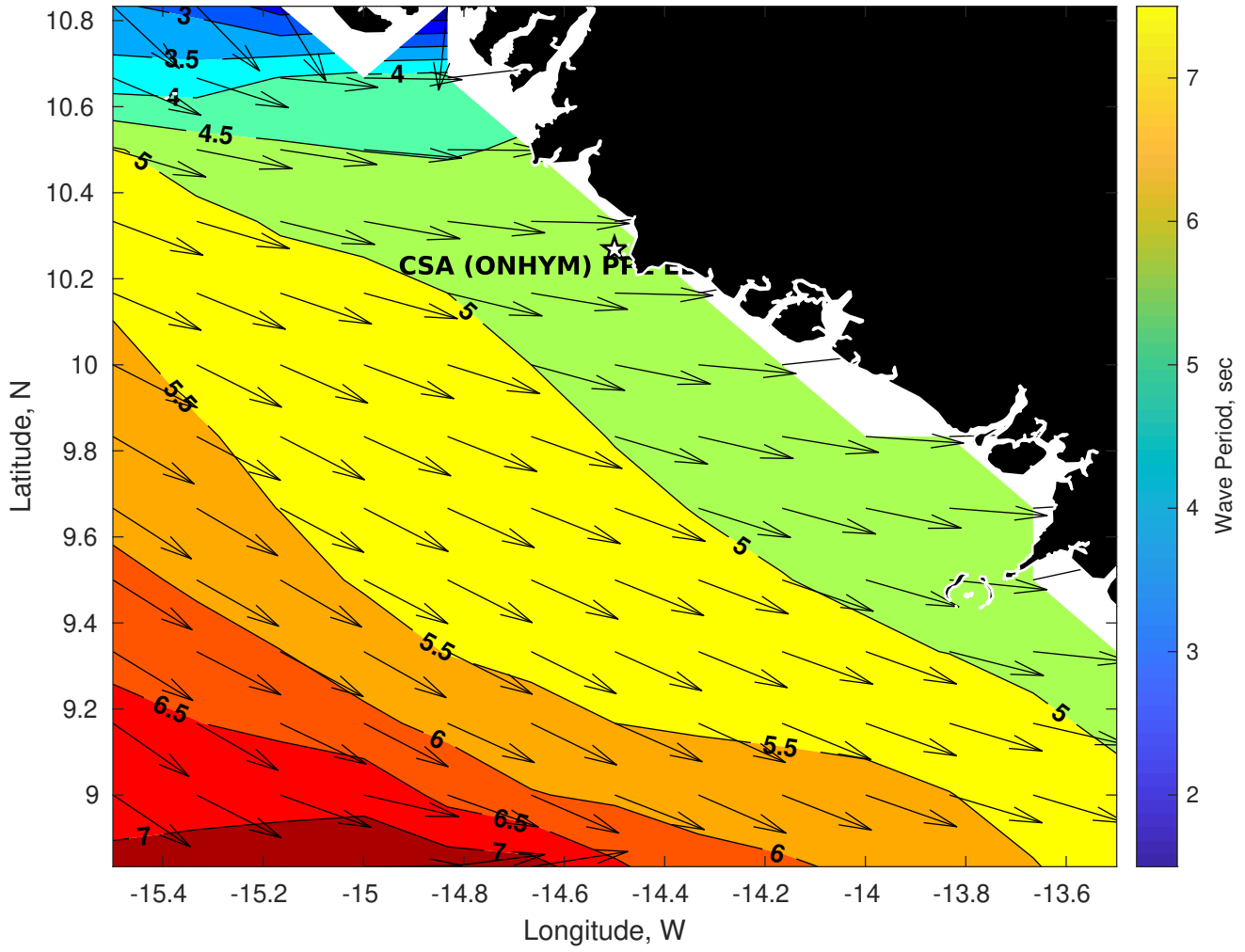
Wind & Wave Forecast for CSA (ONHYM) PPL EBS - Guinea from 07-Mar-2025 01:00:00 to 23-Mar-2025 01:00:00



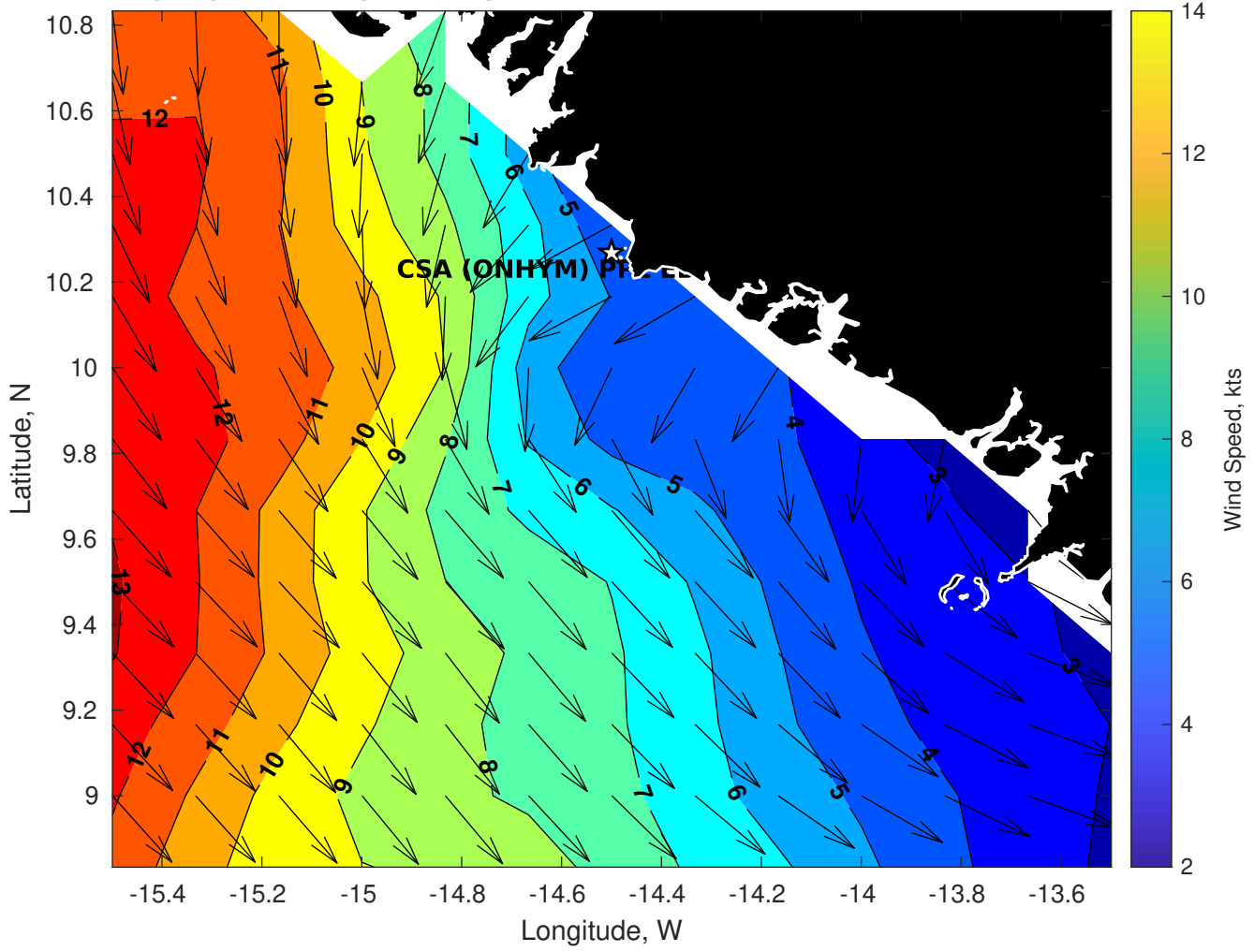
Wave Height (ft) for CSA (ONHYM) PPL EBS - Guinea at 07-Mar-2025 09:00:00



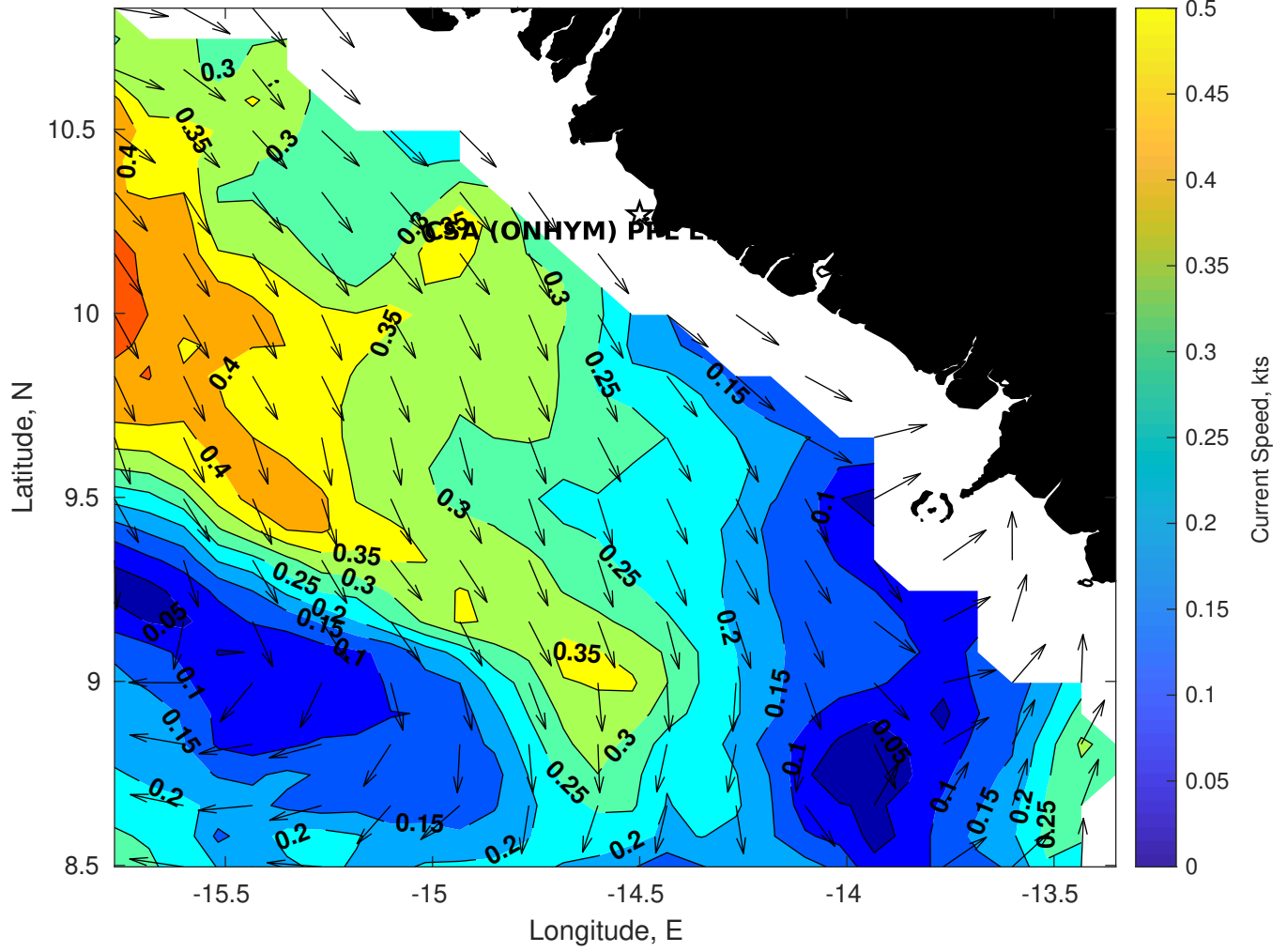
Wave Period (sec) for CSA (ONHYM) PPL EBS - Guinea at 07-Mar-2025 09:00:00



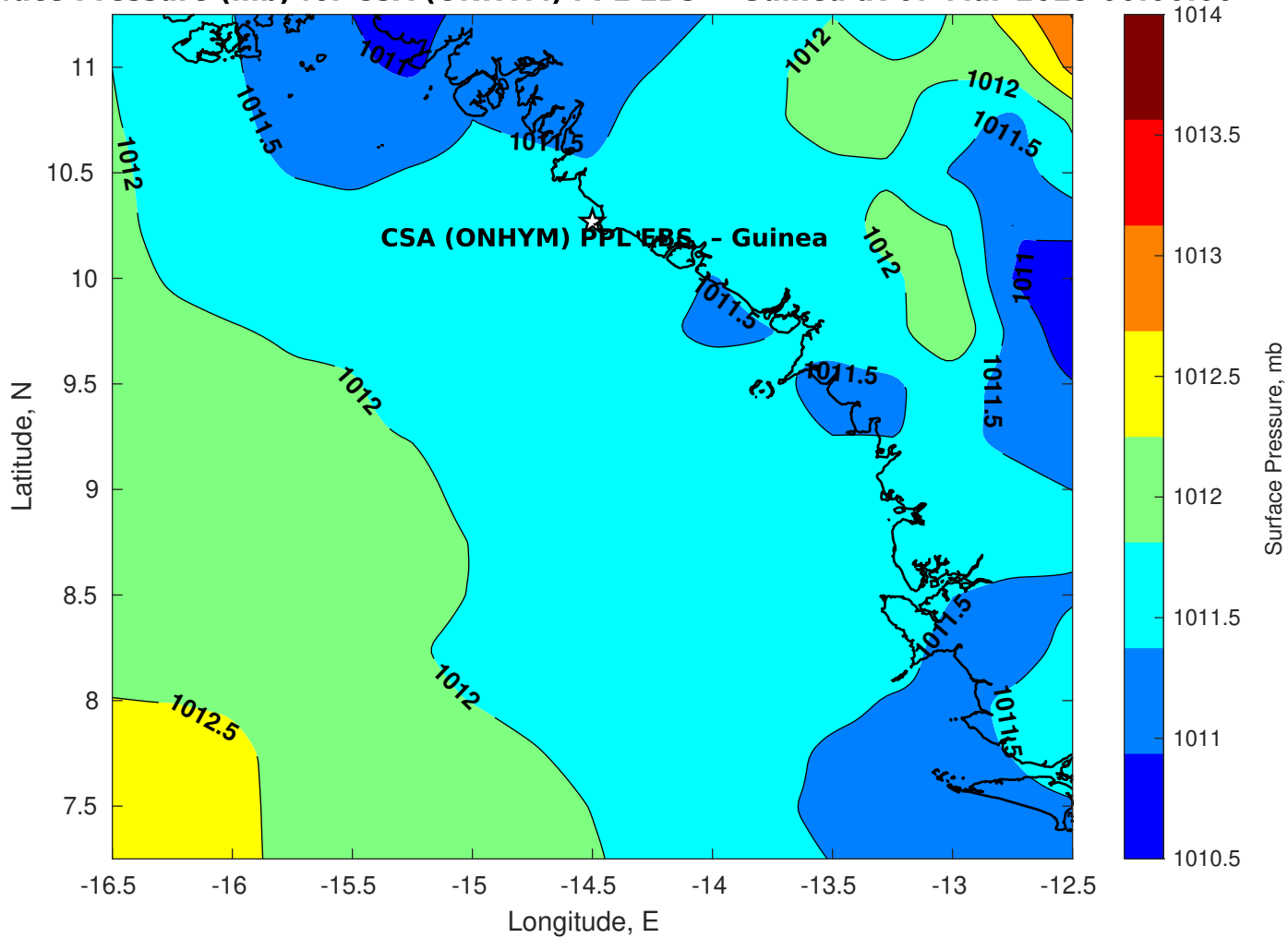
Winds (kts) for CSA (ONHYM) PPL EBS - Guinea at 07-Mar-2025 09:00:00



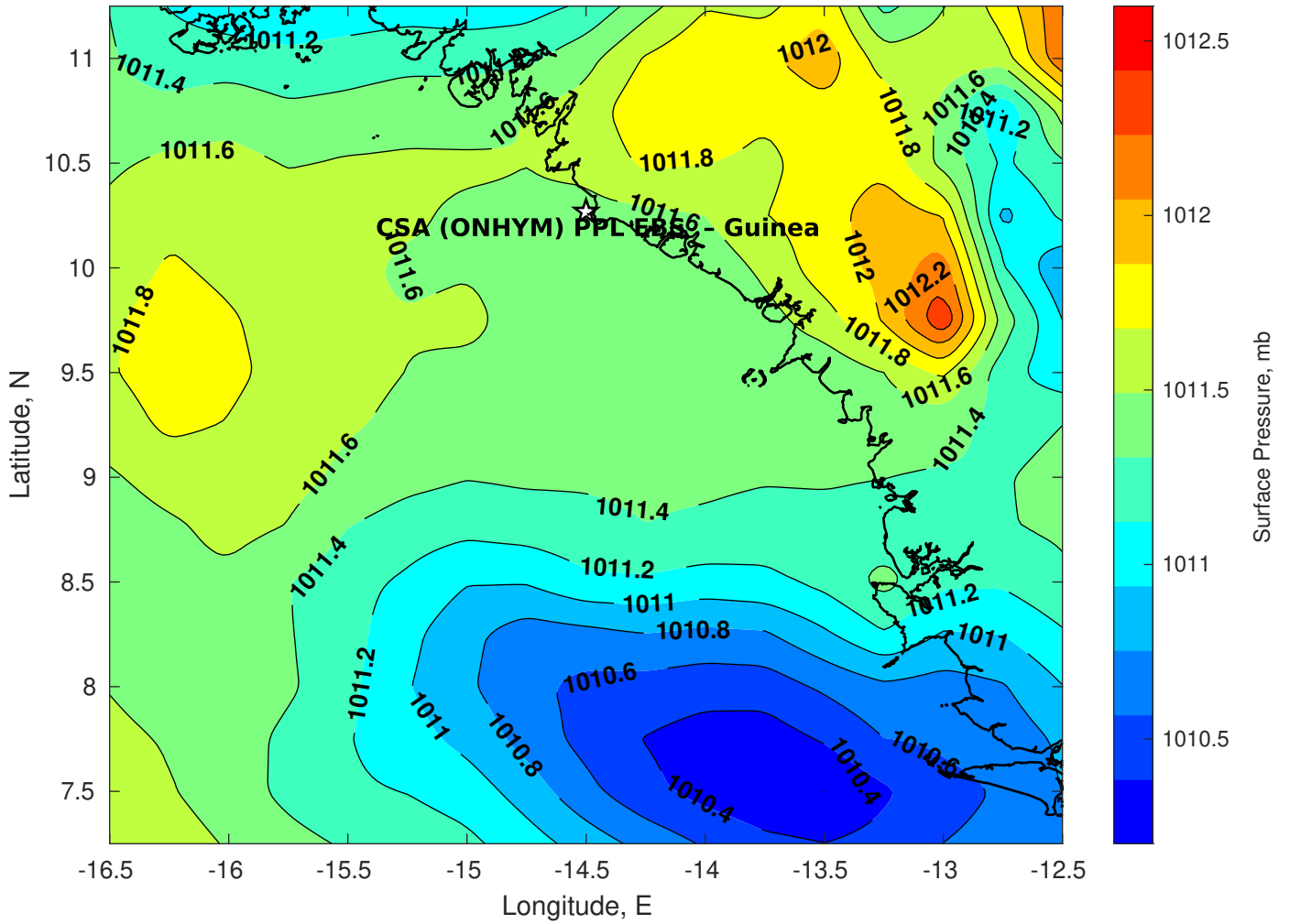
Surface Currents for CSA (ONHYM) PPL EBS - Guinea at 06-Mar-2025 00:00:00



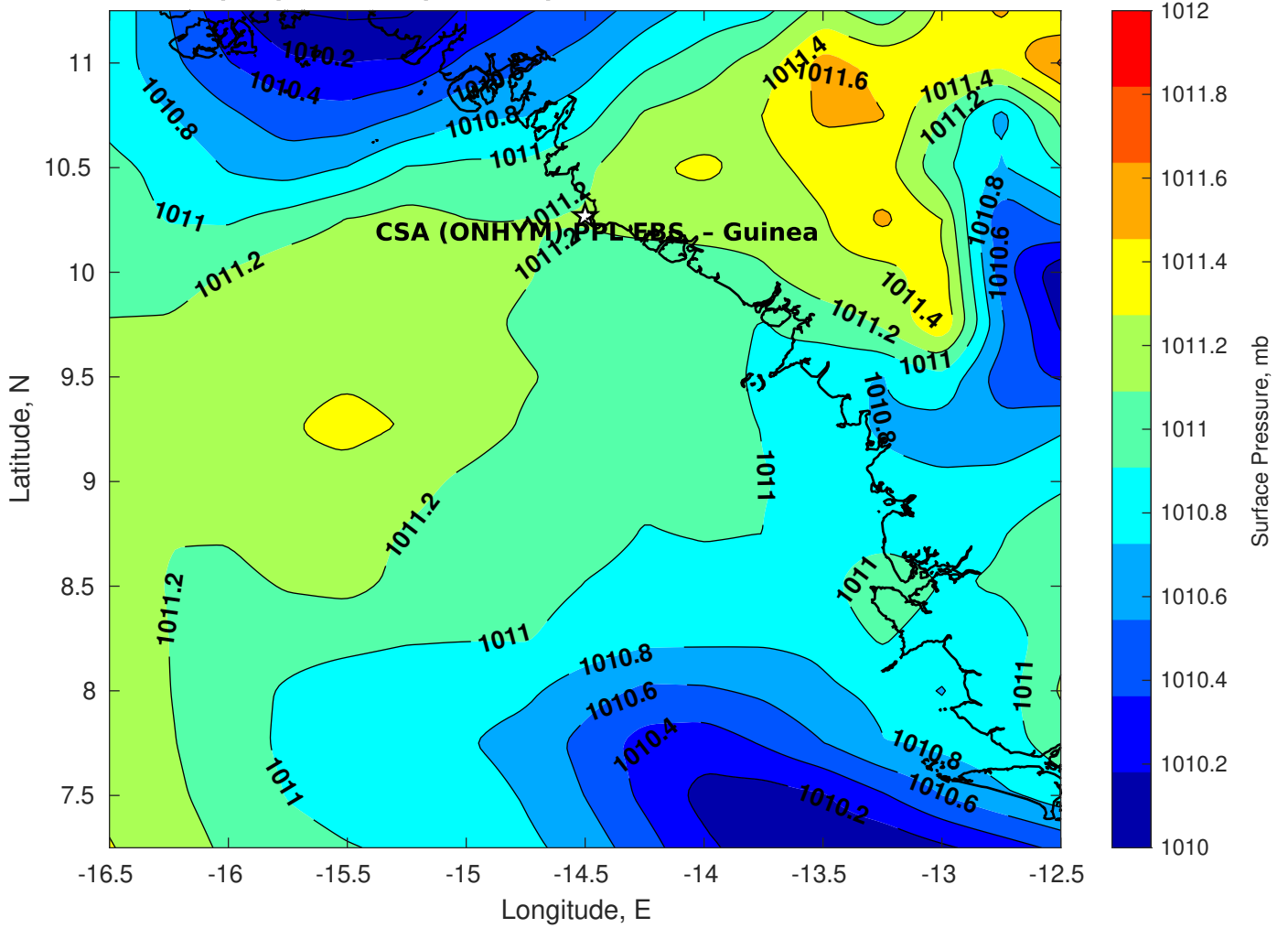
Surface Pressure (mb) for CSA (ONHYM) PPL EBS - Guinea at 07-Mar-2025 00:00:00



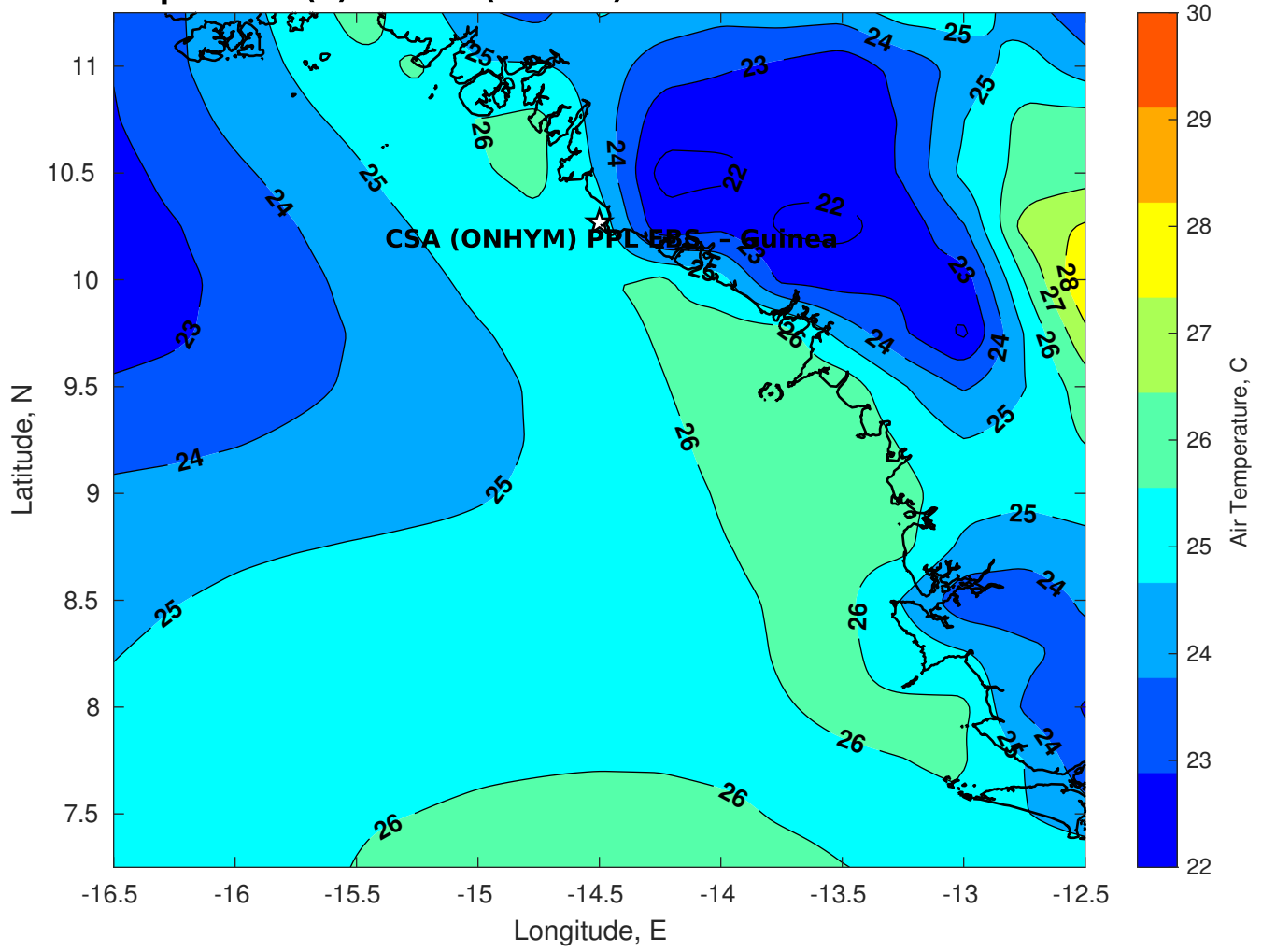
Surface Pressure (mb) for CSA (ONHYM) PPL EBS - Guinea at 08-Mar-2025 00:00:00



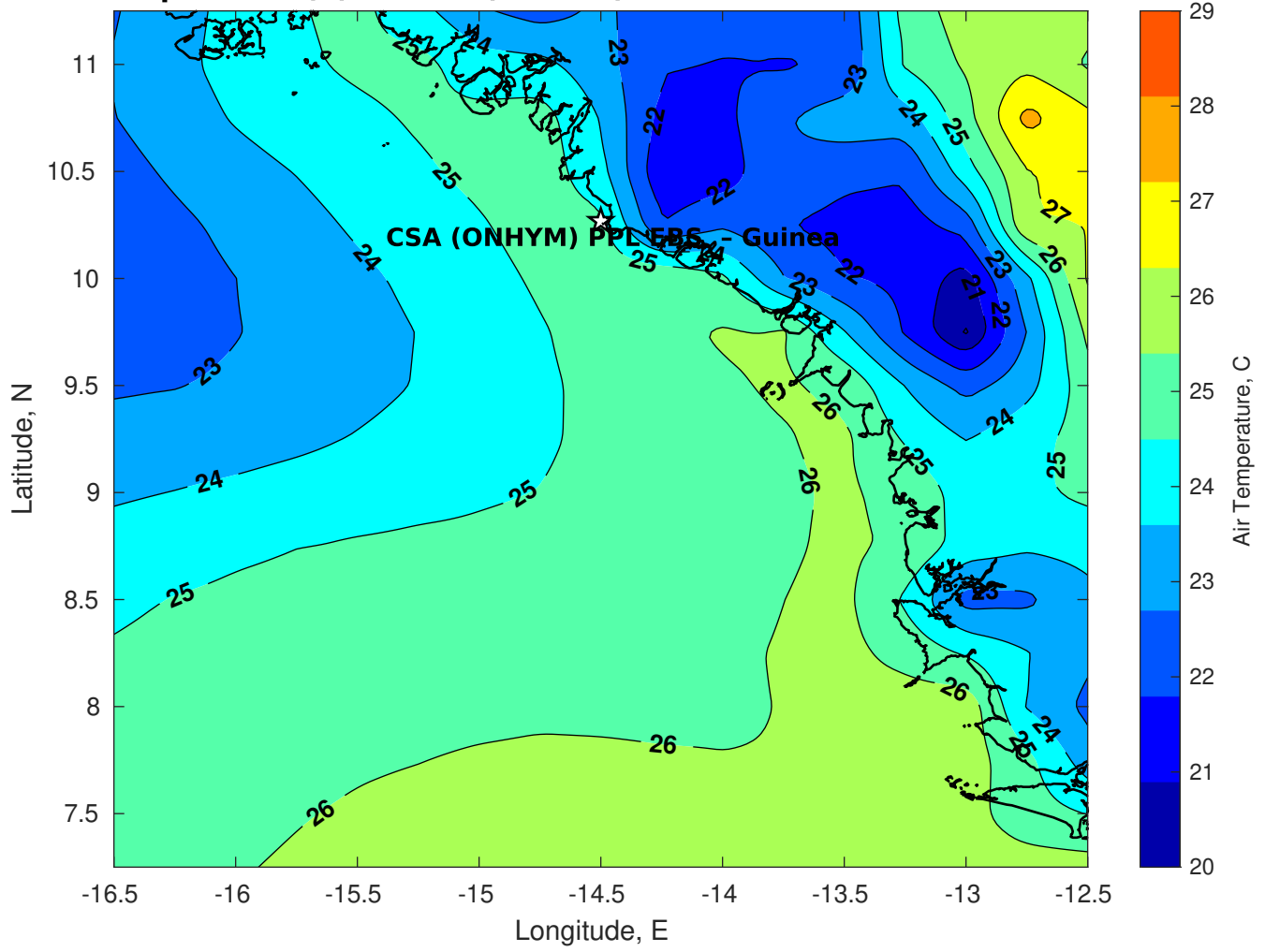
Surface Pressure (mb) for CSA (ONHYM) PPL EBS - Guinea at 09-Mar-2025 00:00:00



Air Temperature (C) for CSA (ONHYM) PPL EBS - Guinea at 07-Mar-2025



Air Temperature (C) for CSA (ONHYM) PPL EBS - Guinea at 07-Mar-2025



Air Temperature (C) for CSA (ONHYM) PPL EBS - Guinea at 07-Mar-2025

