
Marine Weather Forecast for CSA (ONHYM) PPL EBS - Senegal

Forecast valid as of 07-Mar-2025 0900 GMT

All times are local.

Today

Winds: N, 10-15 kts.

Waves: N, 5-6 feet, 7-8 sec.

No currents available.

Tonight

Winds: N, 10-15 kts.

Waves: N, 5-6 feet, 7-8 sec.

No currents available.

Saturday

Winds: N, 15-20 kts.

Waves: N, 4-5 feet, 7-8 sec.

No currents available.

Saturday Night

Winds: N, 10-15 kts.

Waves: N, 4-5 feet, 7-8 sec.

No currents available.

Sunday

Winds: N, 15-20 kts.

Waves: N, 5-6 feet, 6-7 sec.

No currents available.

Sunday Night

Winds: N, 15-20 kts.

Waves: N, 6-7 feet, 13-14 sec.

No currents available.

Monday

Winds: N, 15-20 kts.

Waves: N, 7-8 feet, 13-14 sec.

No currents available.

Monday Night

Winds: N, 10-15 kts.

Waves: N, 7-8 feet, 12-13 sec.

No currents available.

Tuesday

Winds: N, 10-15 kts.

Waves: N, 6-7 feet, 13-14 sec.

No currents available.

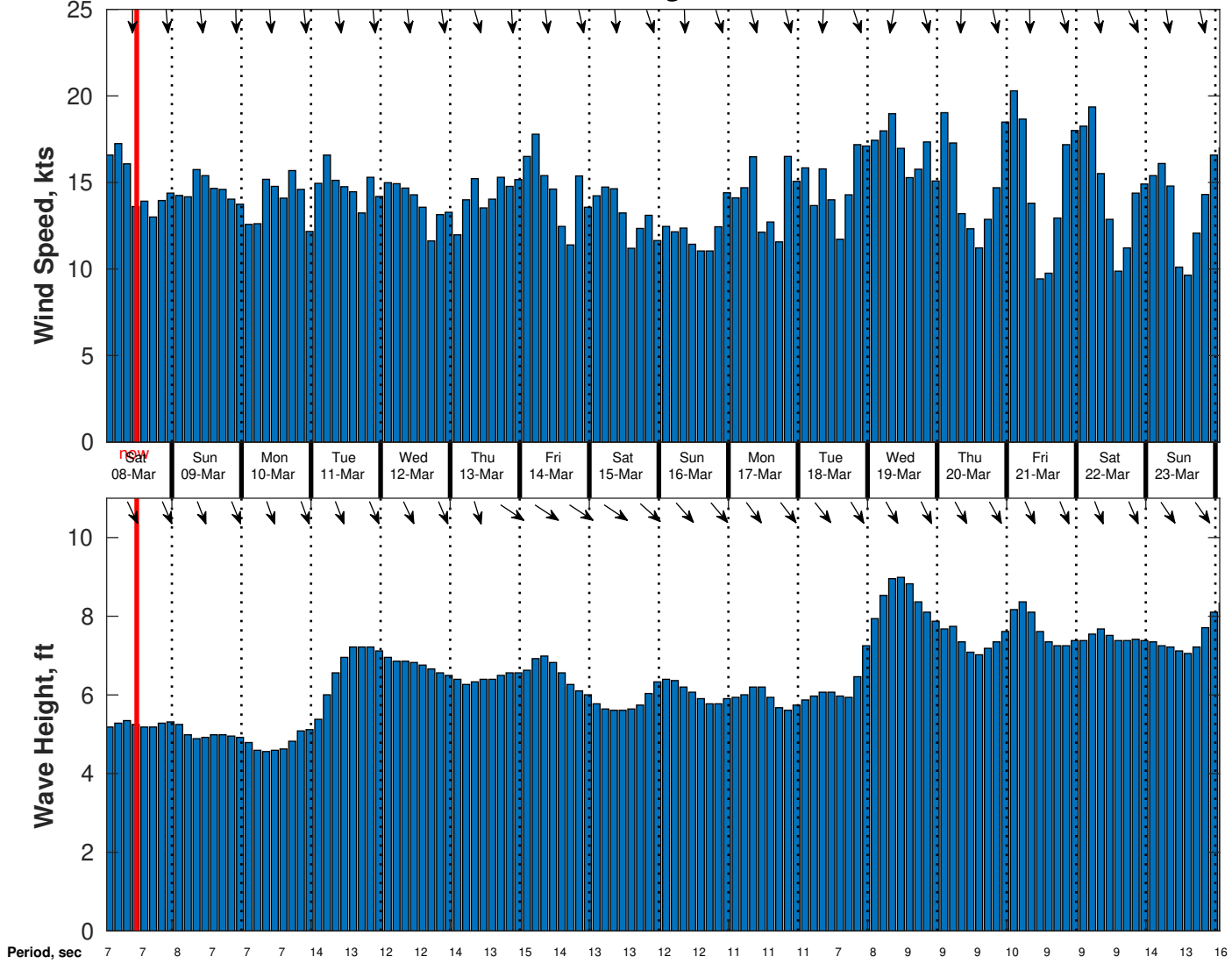
Tuesday Night

Winds: N, 10-15 kts.

Waves: N, 6-7 feet, 13-14 sec.

No currents available.

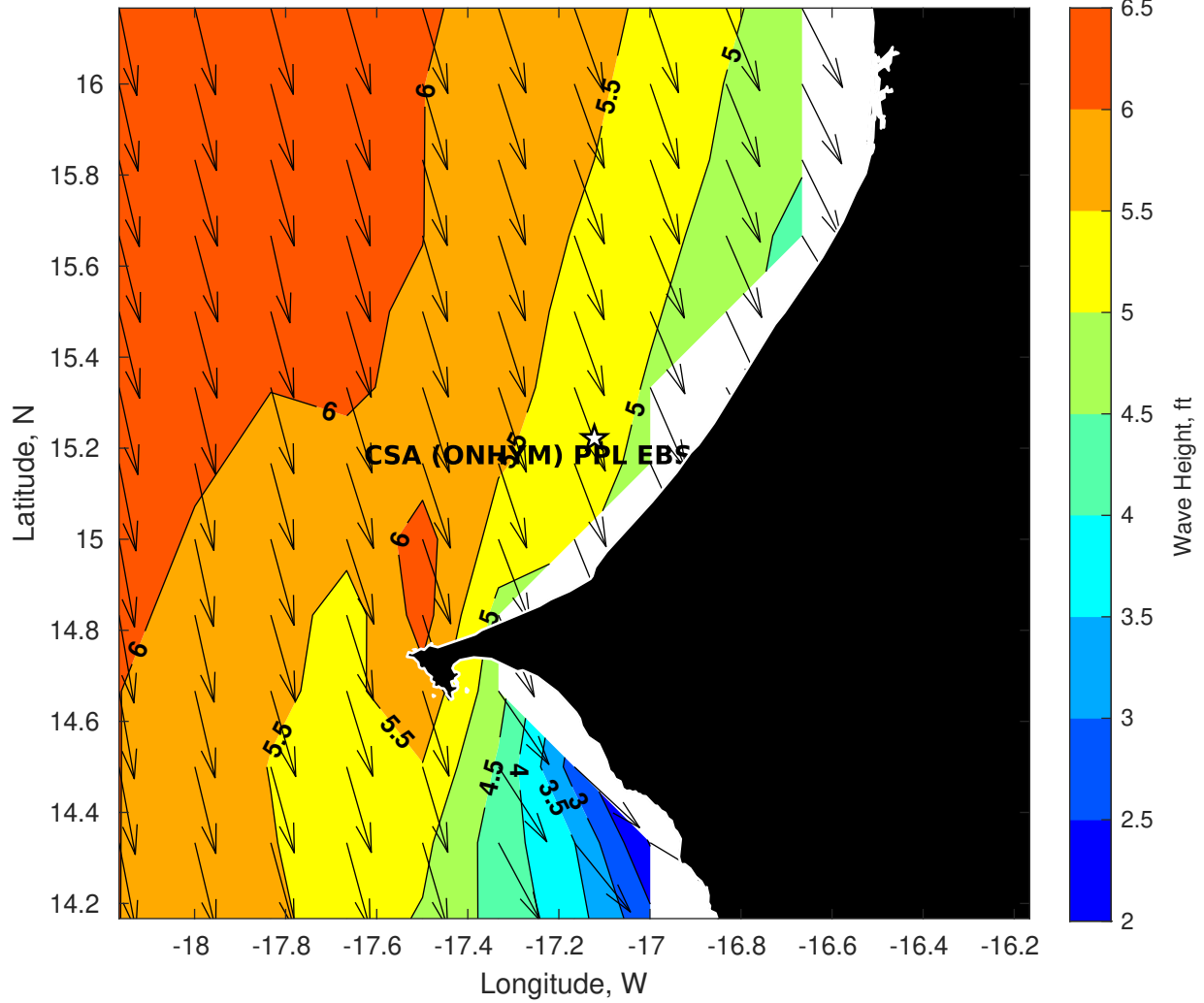
Wind & Wave Forecast for CSA (ONHYM) PPL EBS - Senegal from 07-Mar-2025 01:00:00 to 23-Mar-2025 01:00:00



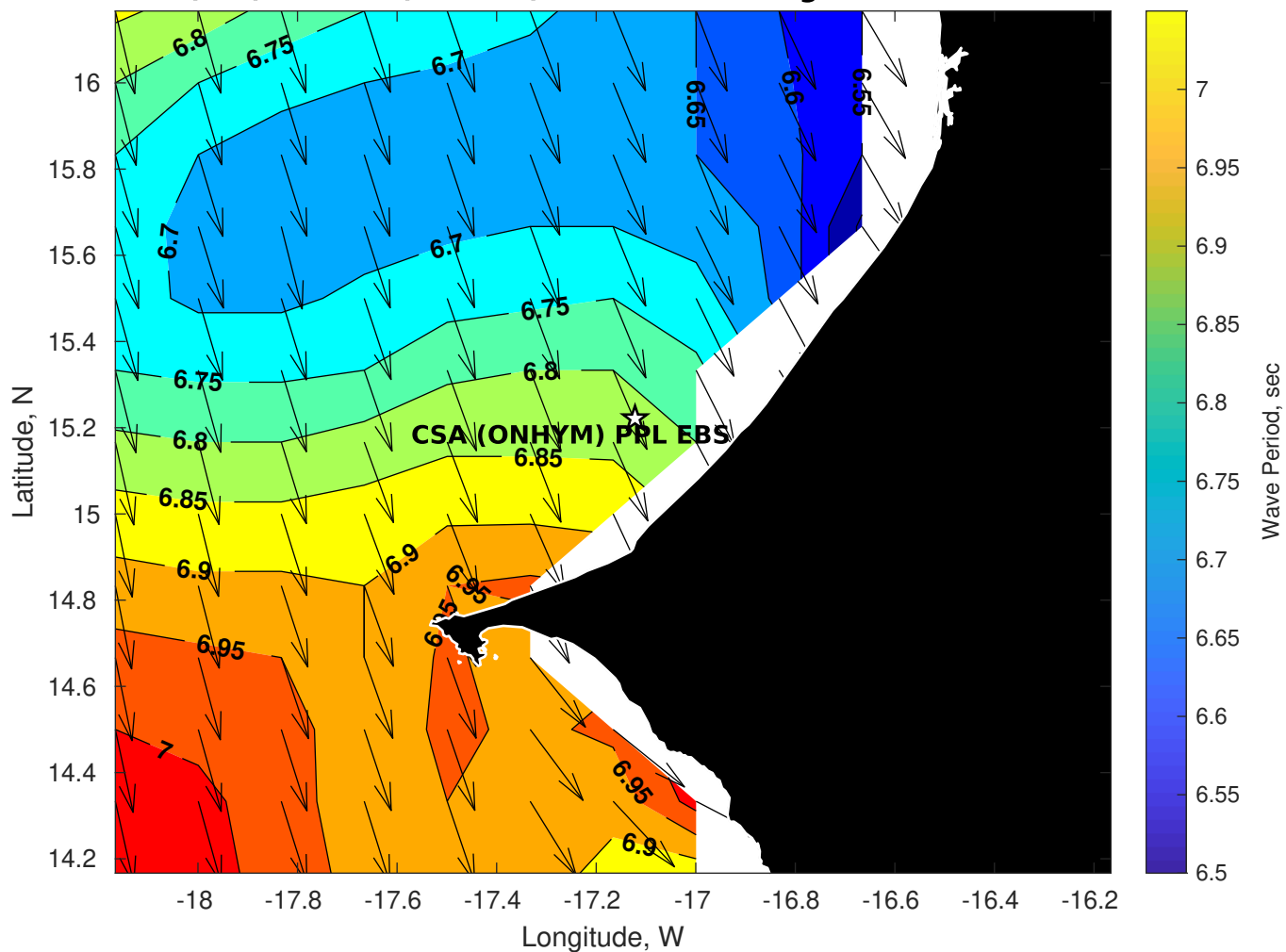
Met Forecast for CSA (ONHYM) PPL EBS - Senegal from 07-Mar-2025 00:00:00 to 14-Mar-2025 00:00:00



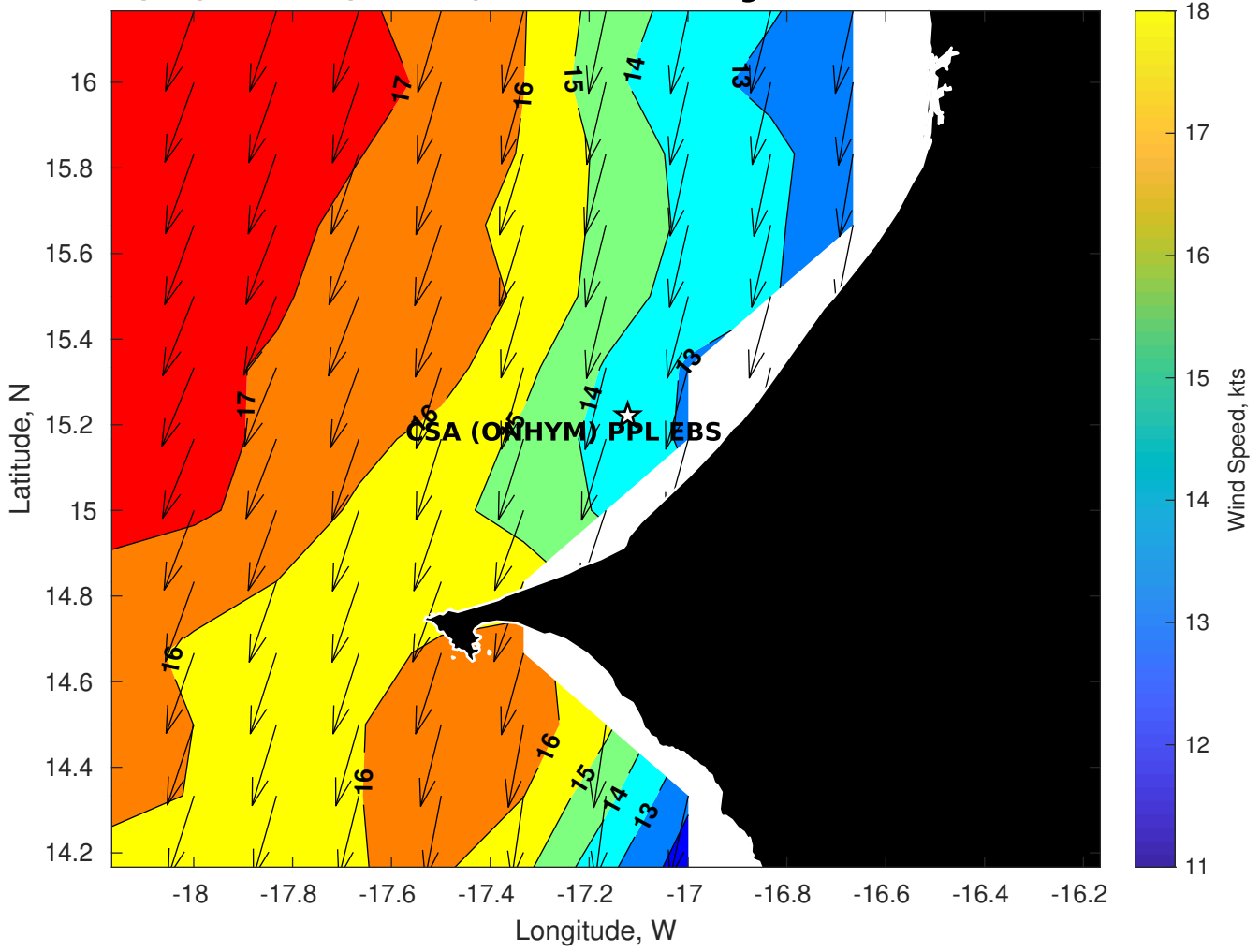
Wave Height (ft) for CSA (ONHYM) PPL EBS - Senegal at 07-Mar-2025 09:00:00



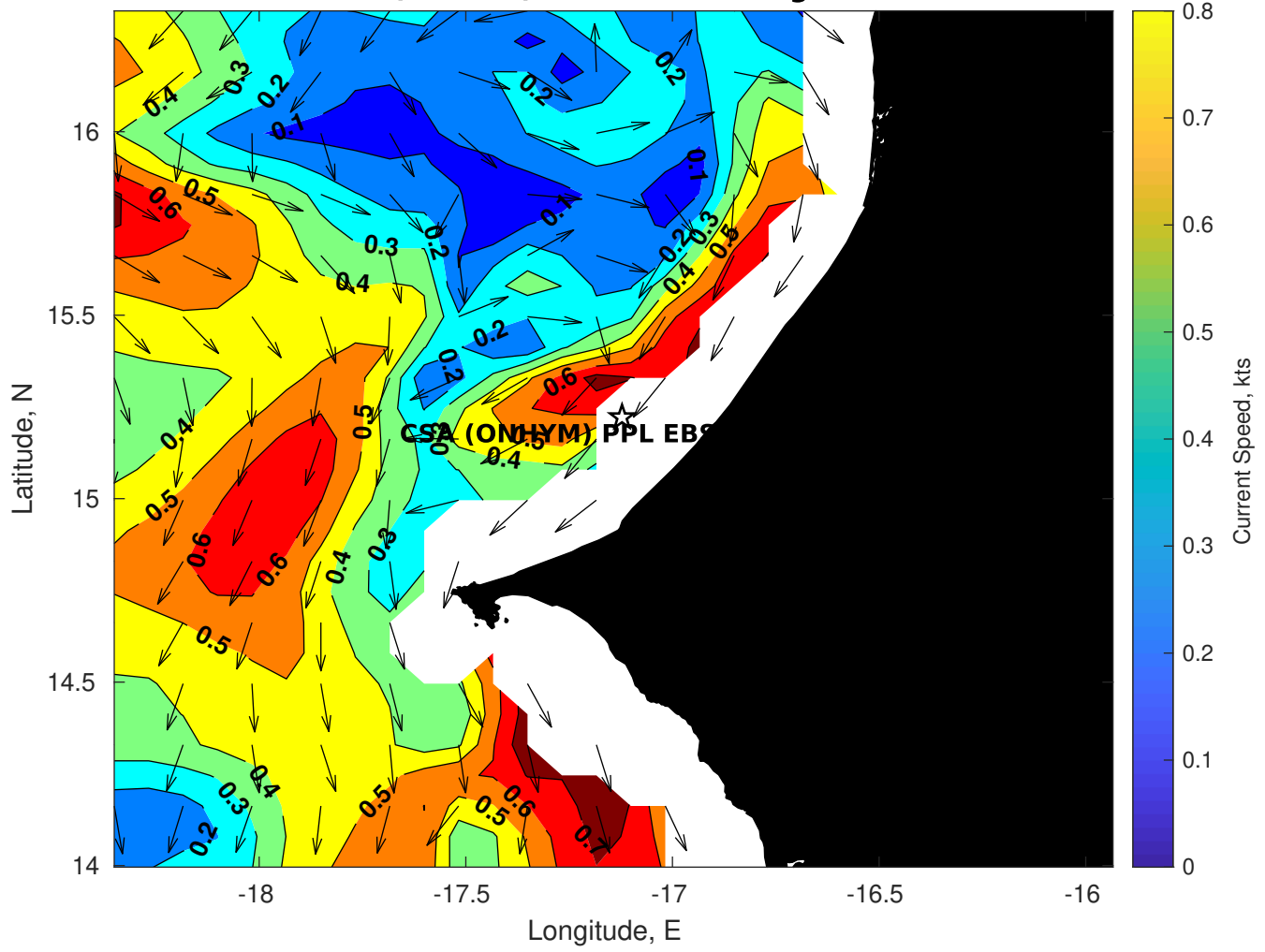
Wave Period (sec) for CSA (ONHYM) PPL EBS - Senegal at 07-Mar-2025 09:00:00



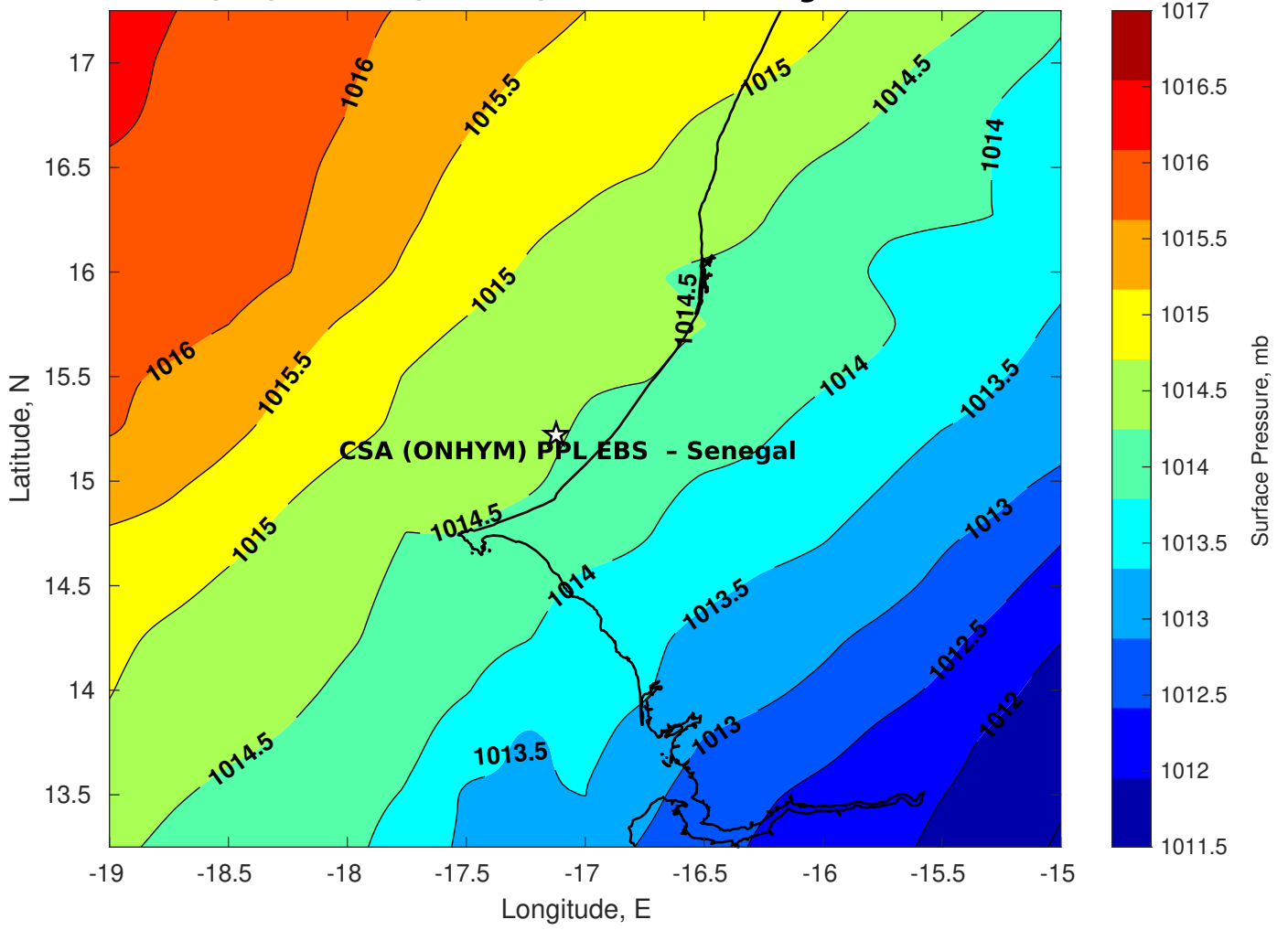
Winds (kts) for CSA (ONHYM) PPL EBS - Senegal at 07-Mar-2025 09:00:00



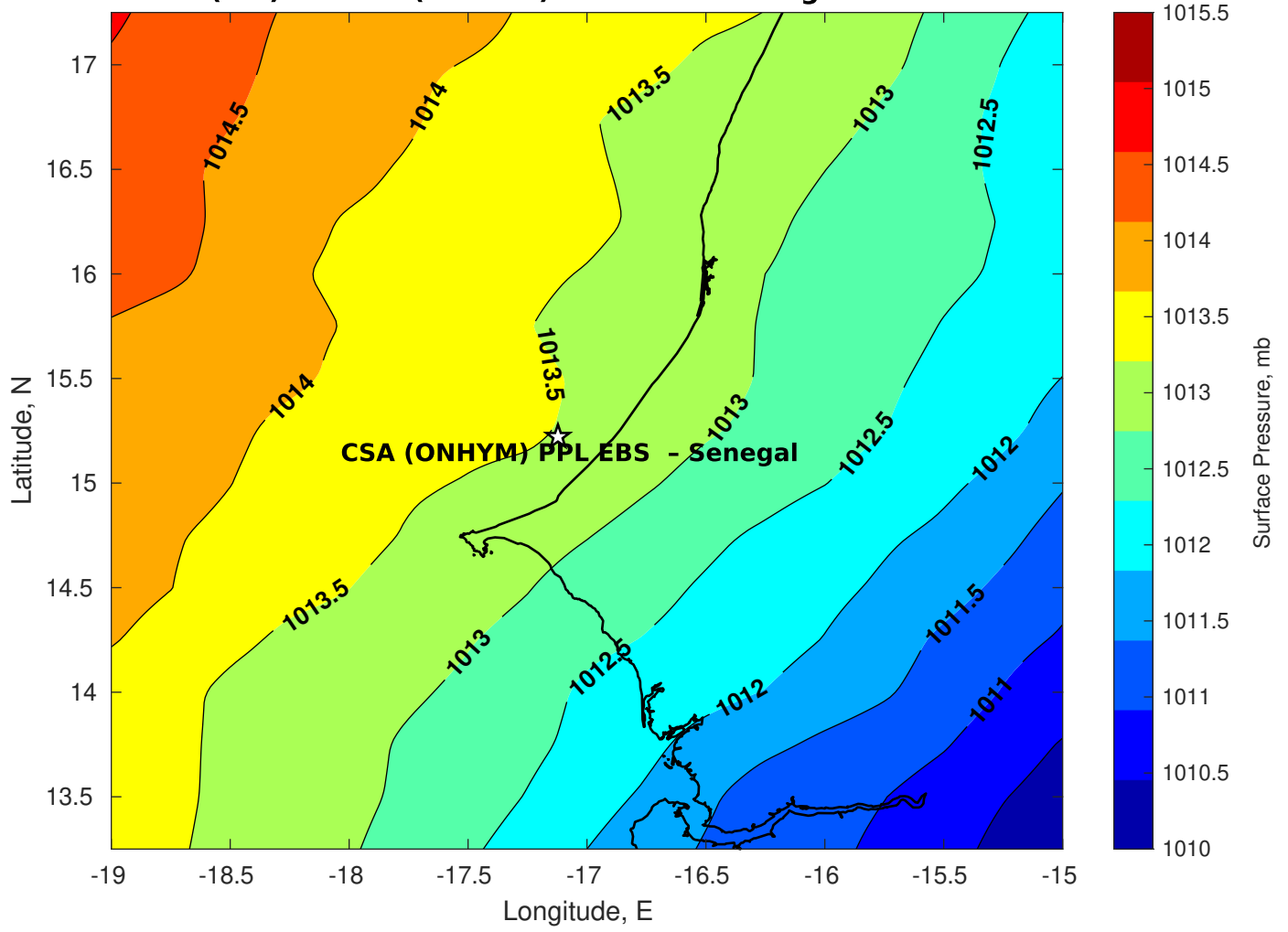
Surface Currents for CSA (ONHYM) PPL EBS - Senegal at 06-Mar-2025 00:00:00



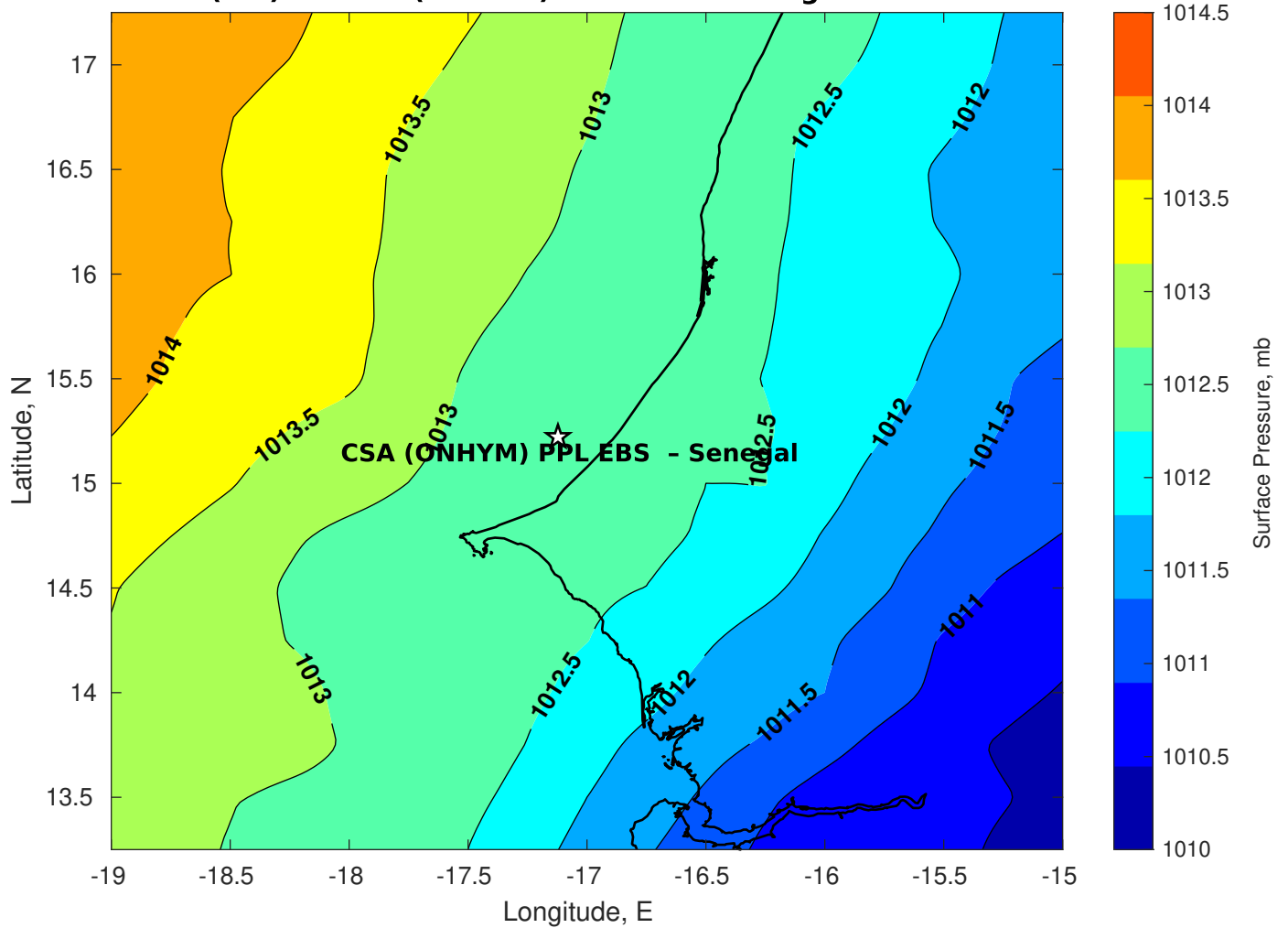
Surface Pressure (mb) for CSA (ONHYM) PPL EBS - Senegal at 07-Mar-2025 00:00:00



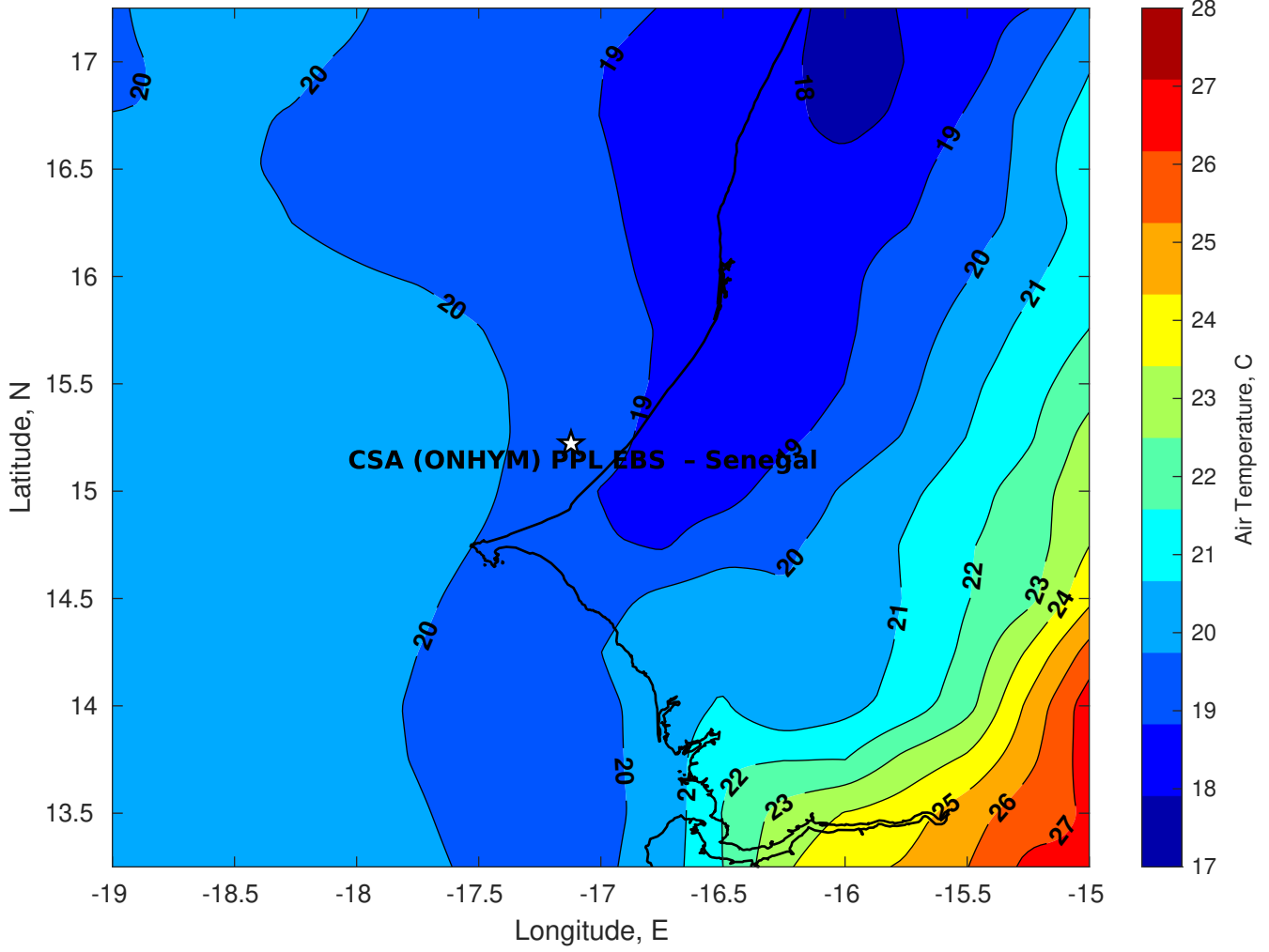
Surface Pressure (mb) for CSA (ONHYM) PPL EBS - Senegal at 08-Mar-2025 00:00:00



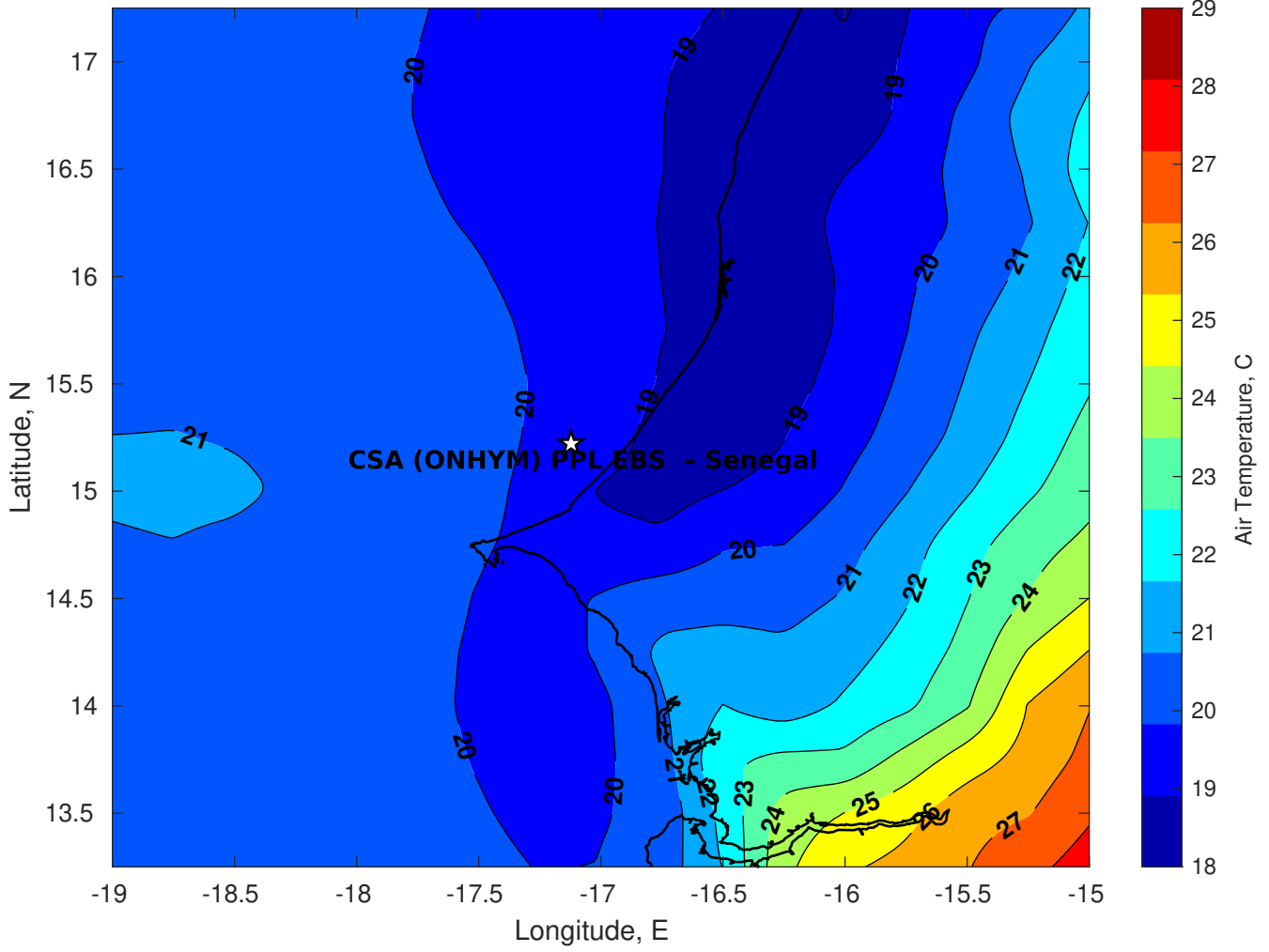
Surface Pressure (mb) for CSA (ONHYM) PPL EBS - Senegal at 09-Mar-2025 00:00:00



Air Temperature (C) for CSA (ONHYM) PPL EBS - Senegal at 07-Mar-2025



Air Temperature (C) for CSA (ONHYM) PPL EBS - Senegal at 07-Mar-2025



Air Temperature (C) for CSA (ONHYM) PPL EBS - Senegal at 07-Mar-2025

