

\*\*\*\*\*

Marine Weather Forecast for CTI Enbridge Kaskida & Tiber PPL Geotechnical  
Forecast valid as of 07-Mar-2025 0900 GMT

\*\*\*\*\*

All times are local.

Today

Winds: N, 15-20 kts.  
Waves: NE, 3-4 feet, 5-6 sec.  
No currents available.

Tonight

Winds: N, 15-20 kts.  
Waves: N, 3-4 feet, 5-6 sec.  
No currents available.

Saturday

Winds: NE, 10-15 kts.  
Waves: NE, 4-5 feet, 6-7 sec.  
No currents available.

Saturday Night

Winds: N, 20-25 kts.  
Waves: NE, 4-5 feet, 6-7 sec.  
No currents available.

Sunday

Winds: N, 25-30 kts.  
Waves: N, 7-8 feet, 6-7 sec.  
No currents available.

Sunday Night

Winds: N, 25-30 kts.  
Waves: NW, 8-9 feet, 7-8 sec.  
No currents available.

Monday

Winds: N, 15-20 kts.  
Waves: N, 6-7 feet, 6-7 sec.  
No currents available.

Monday Night

Winds: NE, 5-10 kts.  
Waves: N, 2-3 feet, 4-5 sec.  
No currents available.

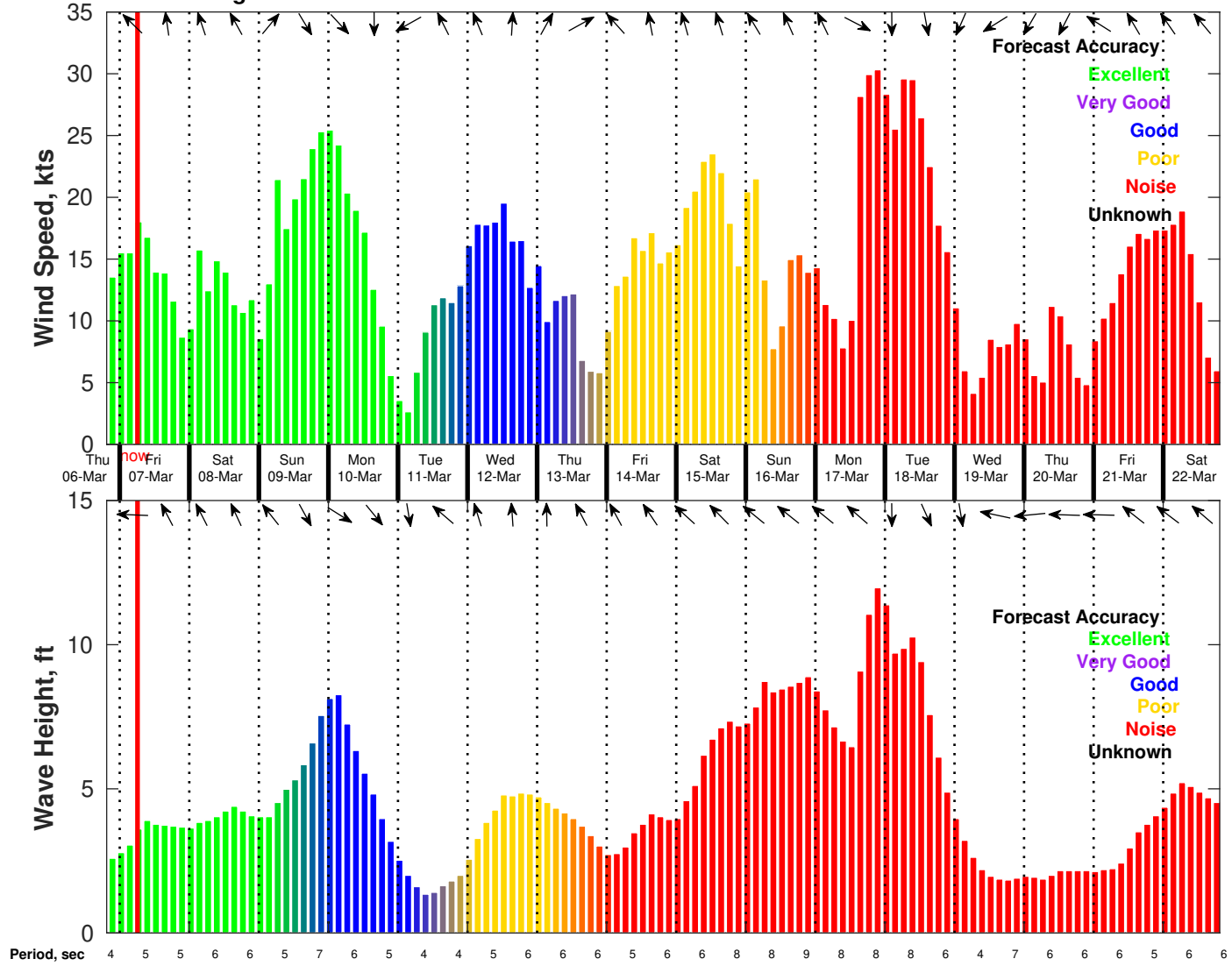
Tuesday

Winds: NE, 10-15 kts.  
Waves: NE, 2-3 feet, 3-4 sec.  
No currents available.

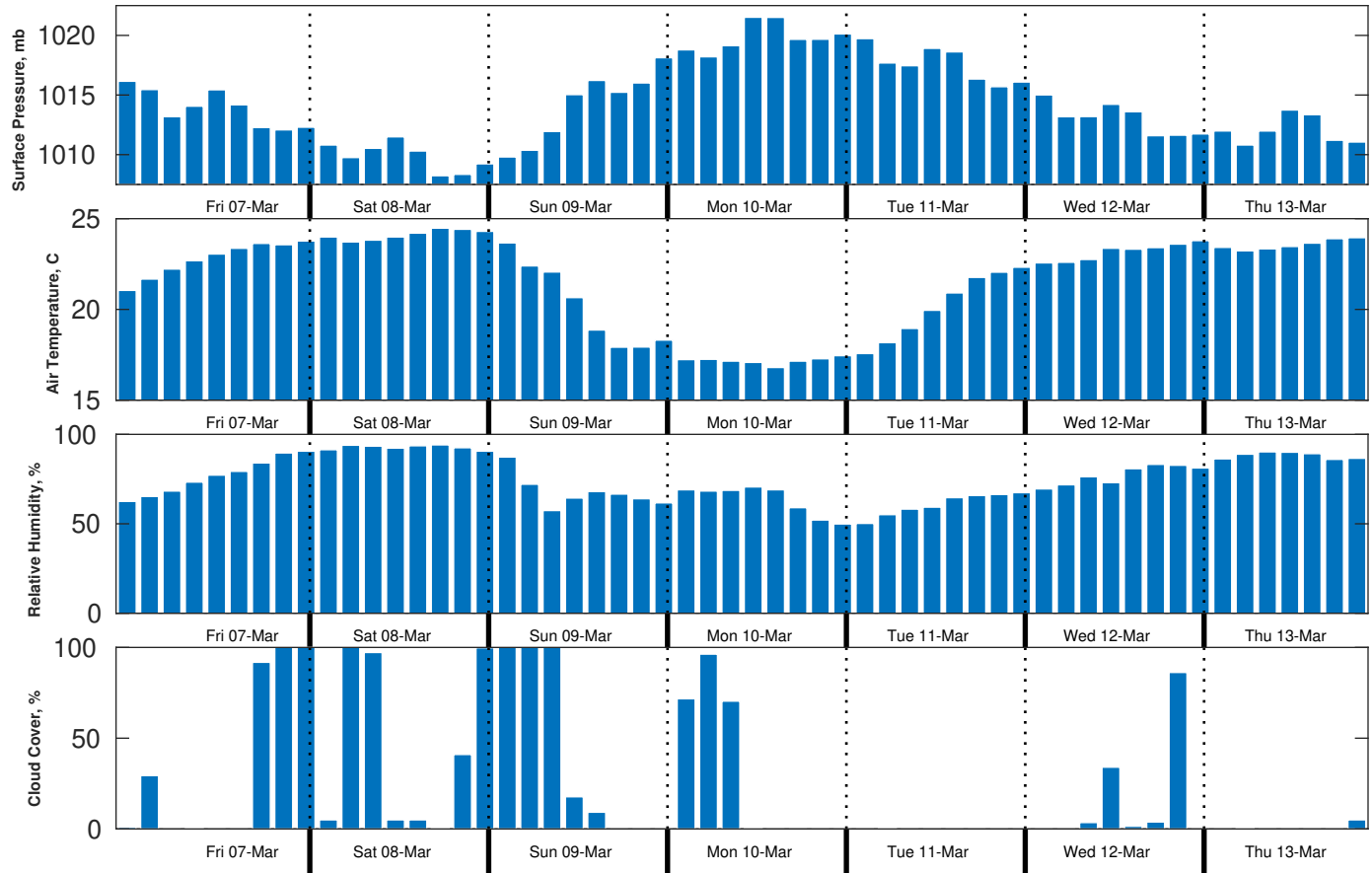
Tuesday Night

Winds: N, 15-20 kts.  
Waves: N, 3-4 feet, 4-5 sec.  
No currents available.

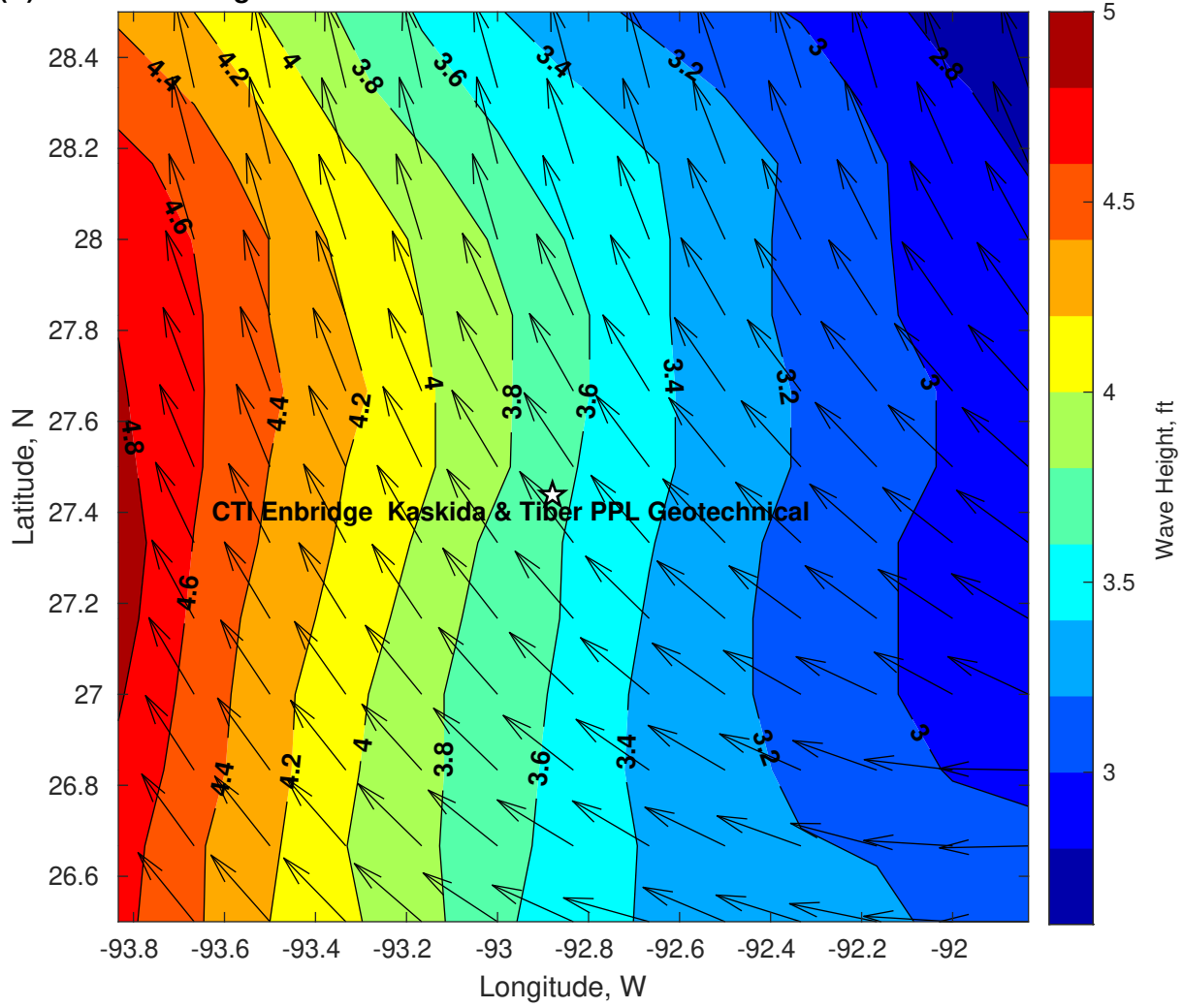
**Wind & Wave Forecast for CTI Enbridge Kaskida & Tiber PPL Geotechnical from 06-Mar-2025 20:00:00 to 22-Mar-2025 20:00:00**



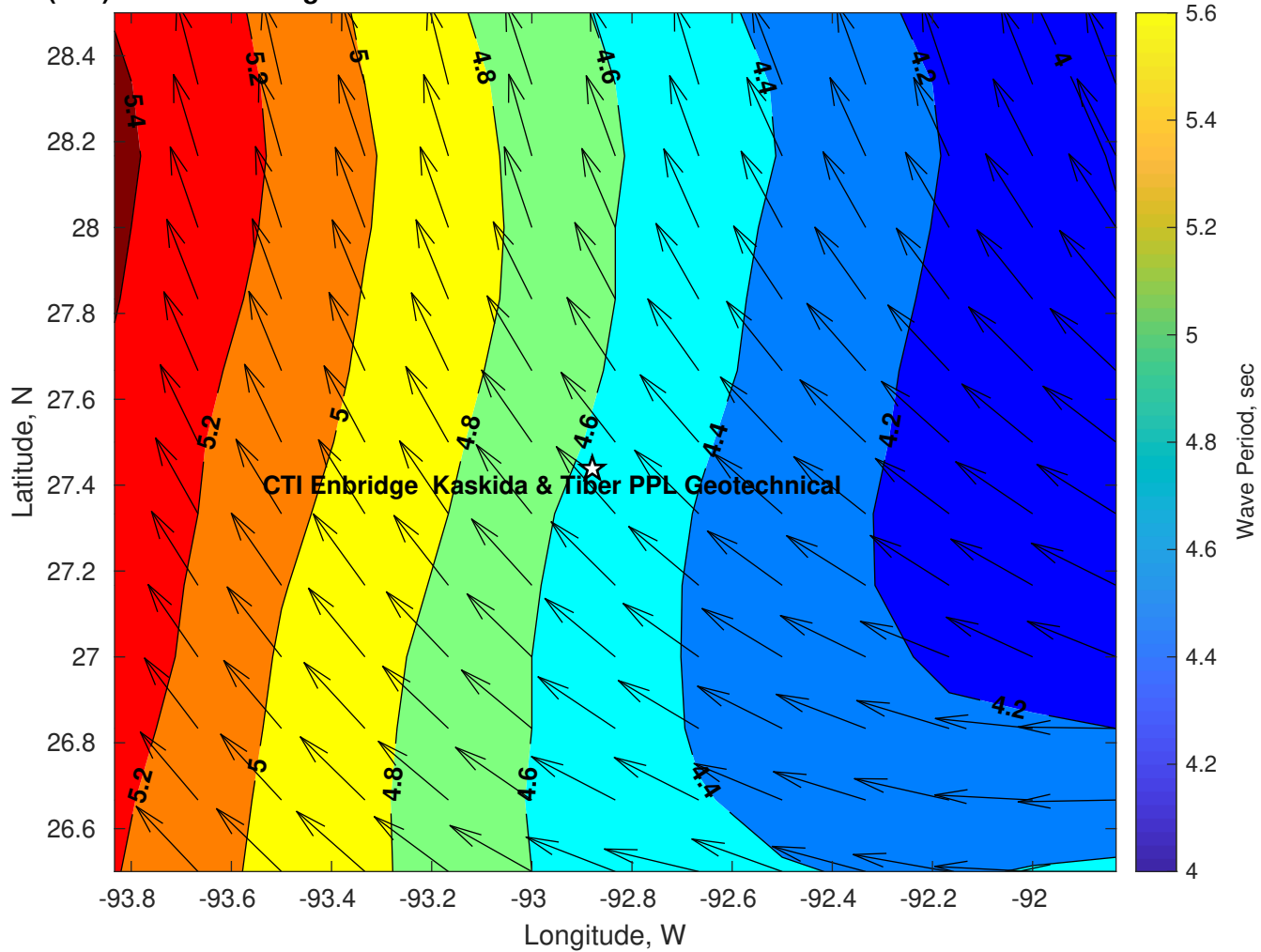
**Met Forecast for CTI Enbridge Kaskida & Tiber PPL Geotechnical from 07-Mar-2025 00:00:00 to 14-Mar-2025 00:00:00**



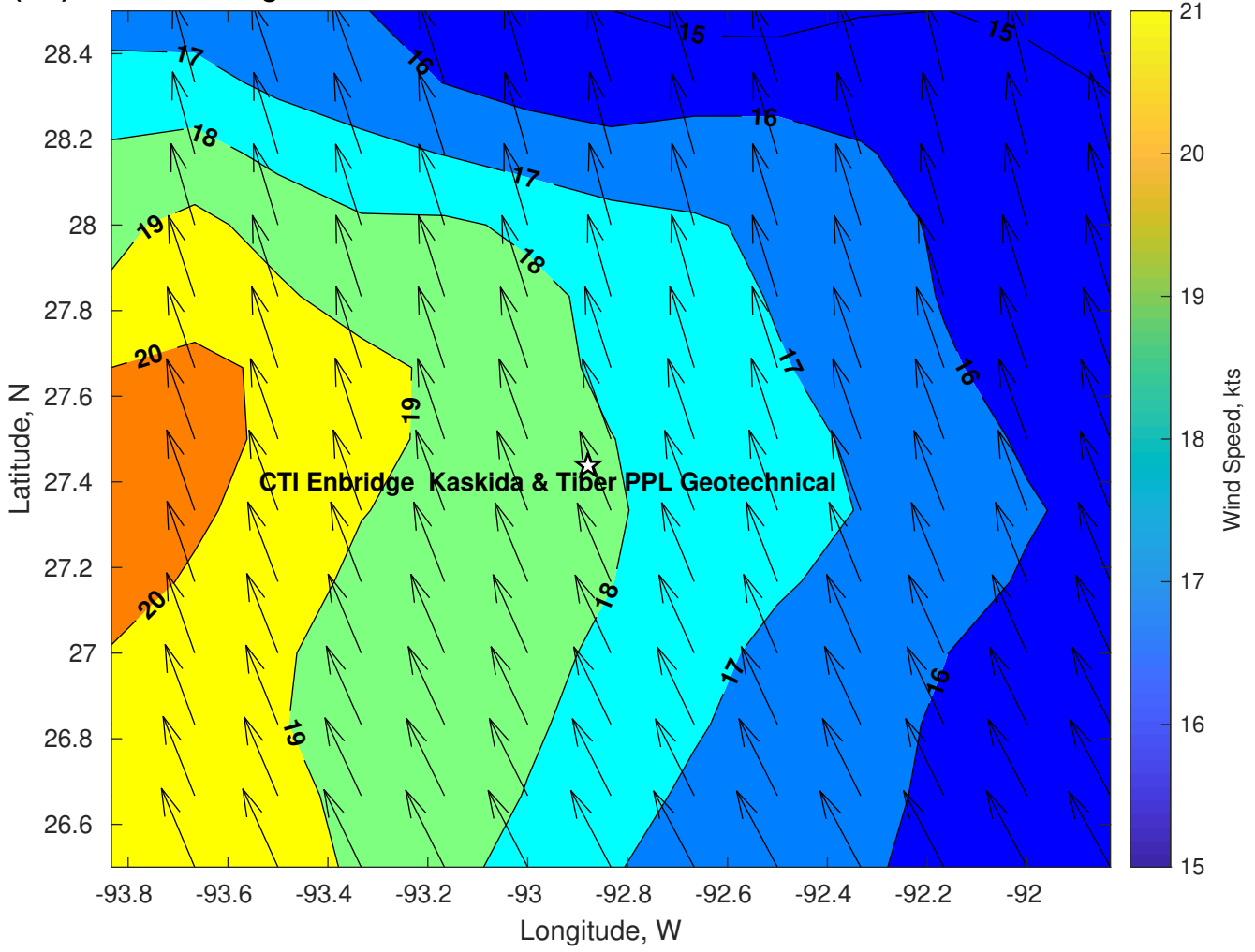
Wave Height (ft) for CTI Enbridge Kaskida & Tiber PPL Geotechnical at 07-Mar-2025 09:00:00



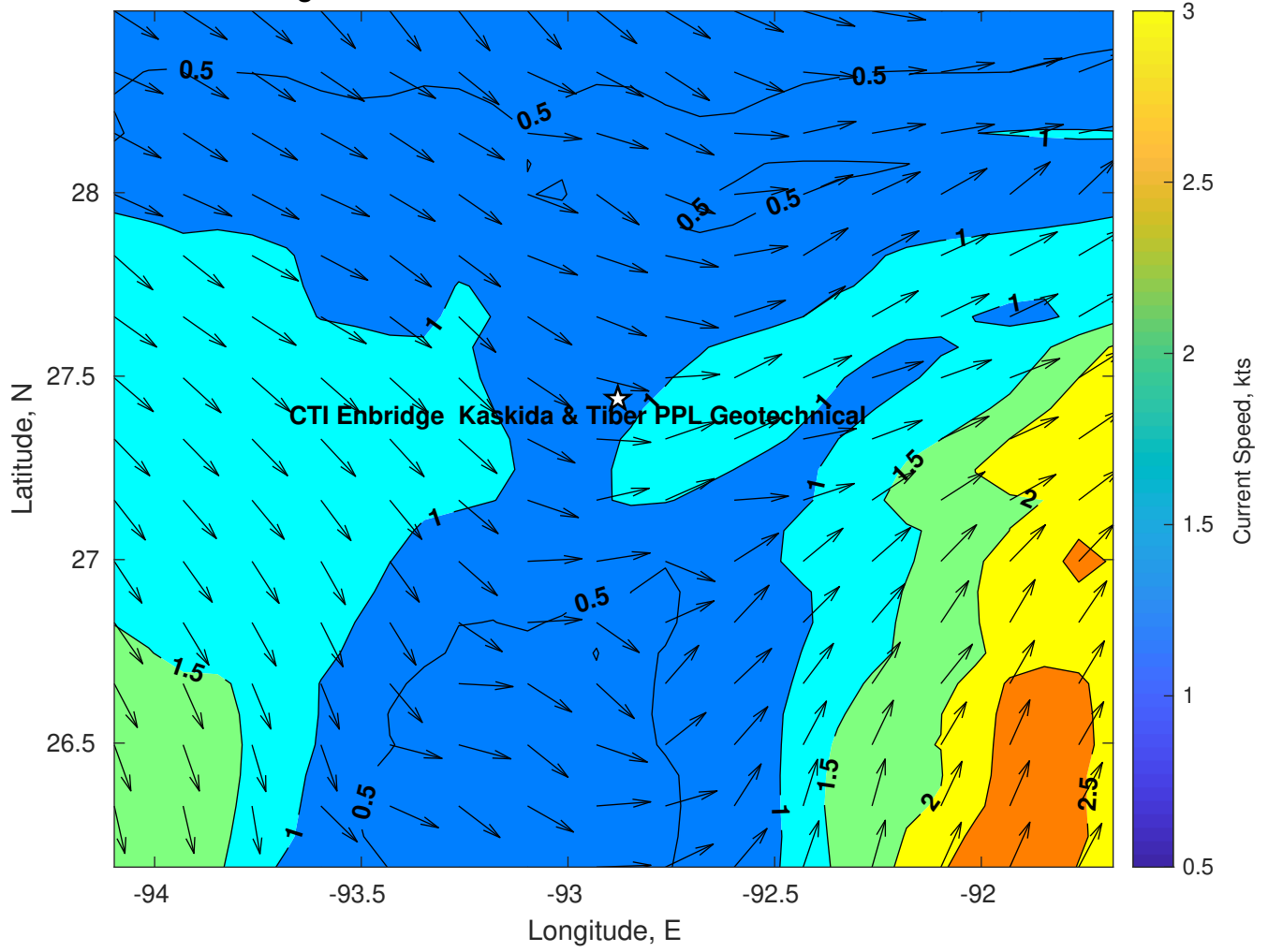
Wave Period (sec) for CTI Enbridge Kaskida & Tiber PPL Geotechnical at 07-Mar-2025 09:00:00



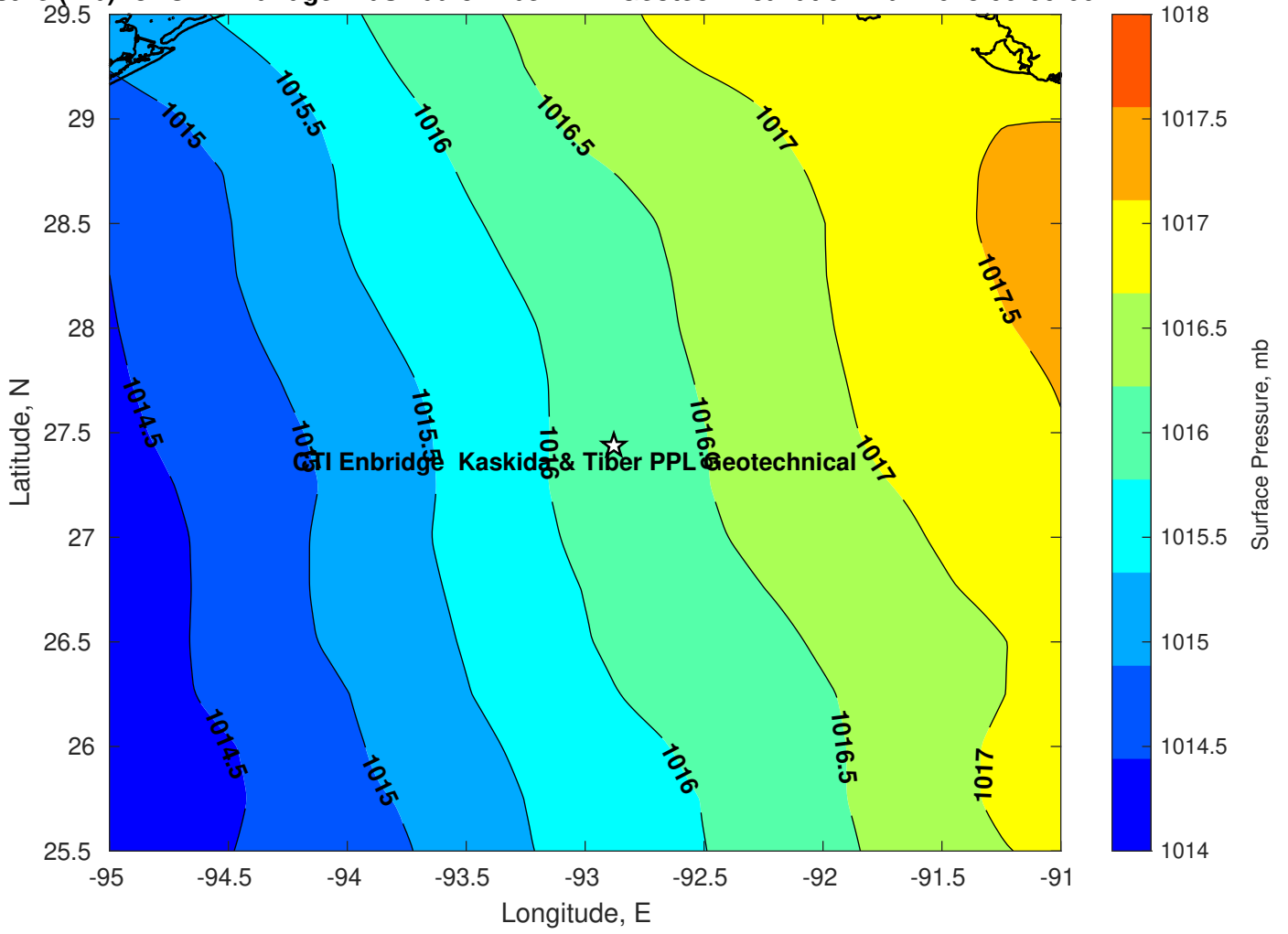
**Winds (kts) for CTI Enbridge Kaskida & Tiber PPL Geotechnical at 07-Mar-2025 09:00:00**



Surface Currents for CTI Enbridge Kaskida & Tiber PPL Geotechnical at 05-Mar-2025 00:00:00

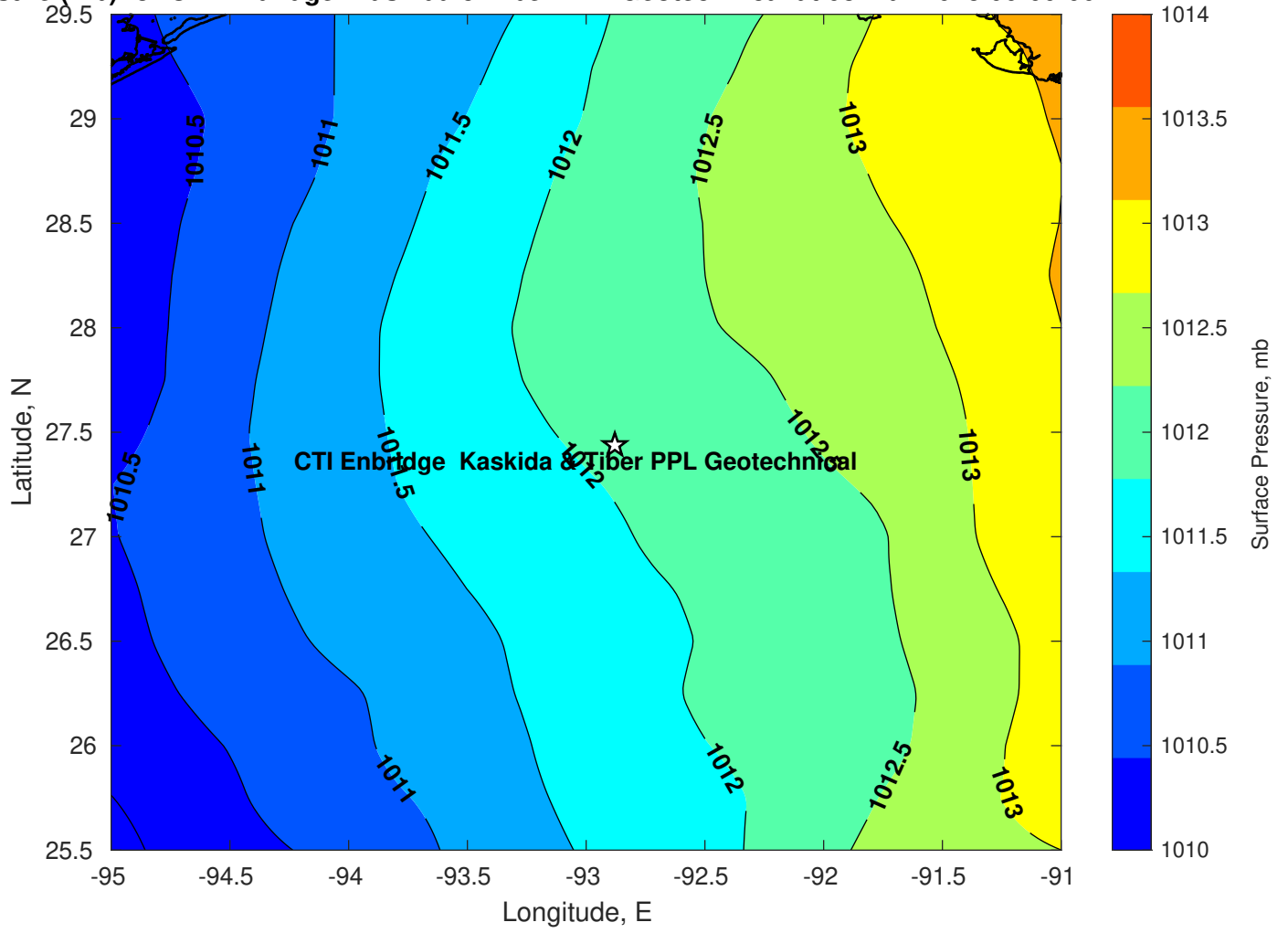


Surface Pressure (mb) for CTI Enbridge Kaskida & Tiber PPL Geotechnical at 07-Mar-2025 00:00:00

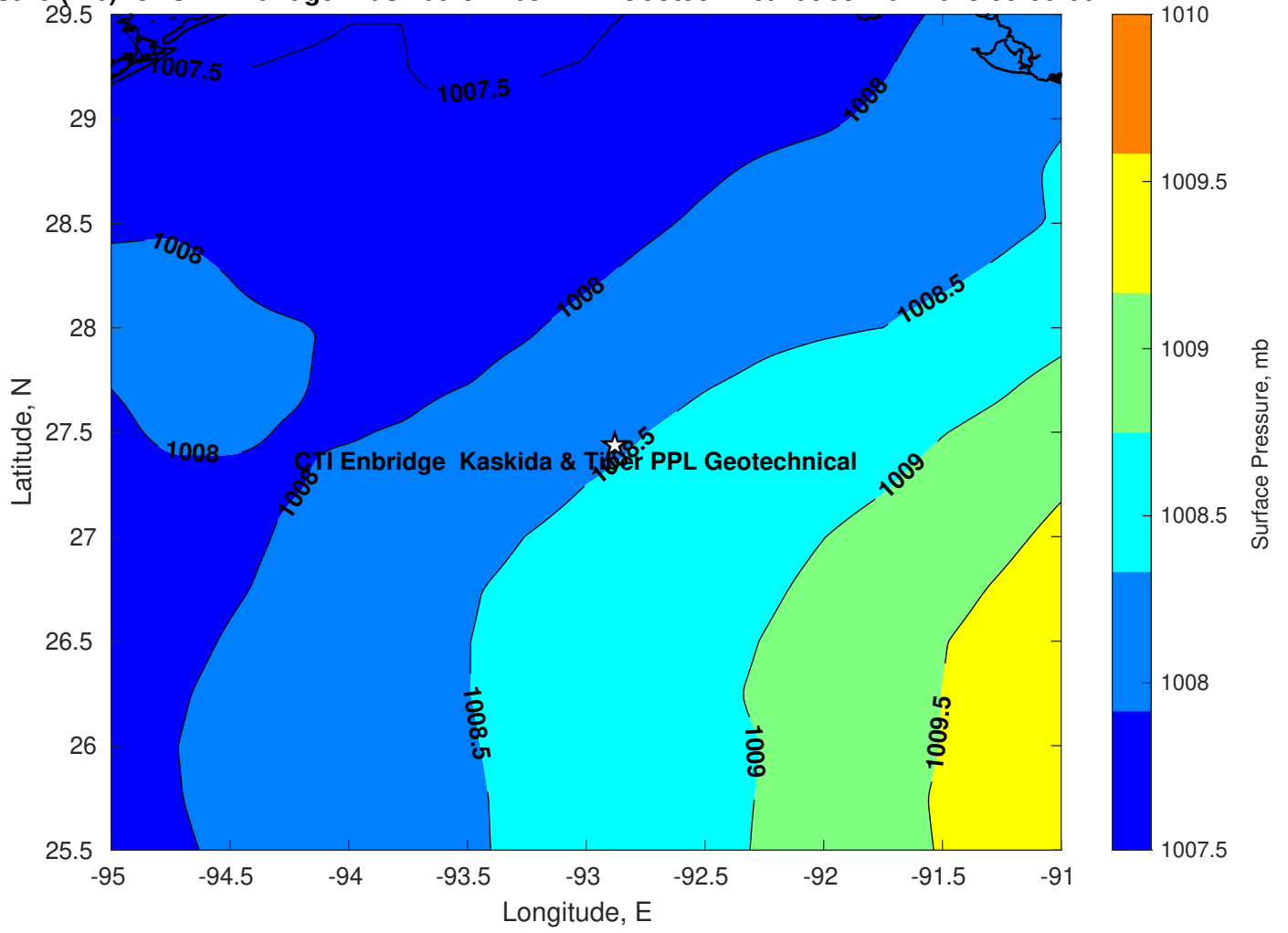




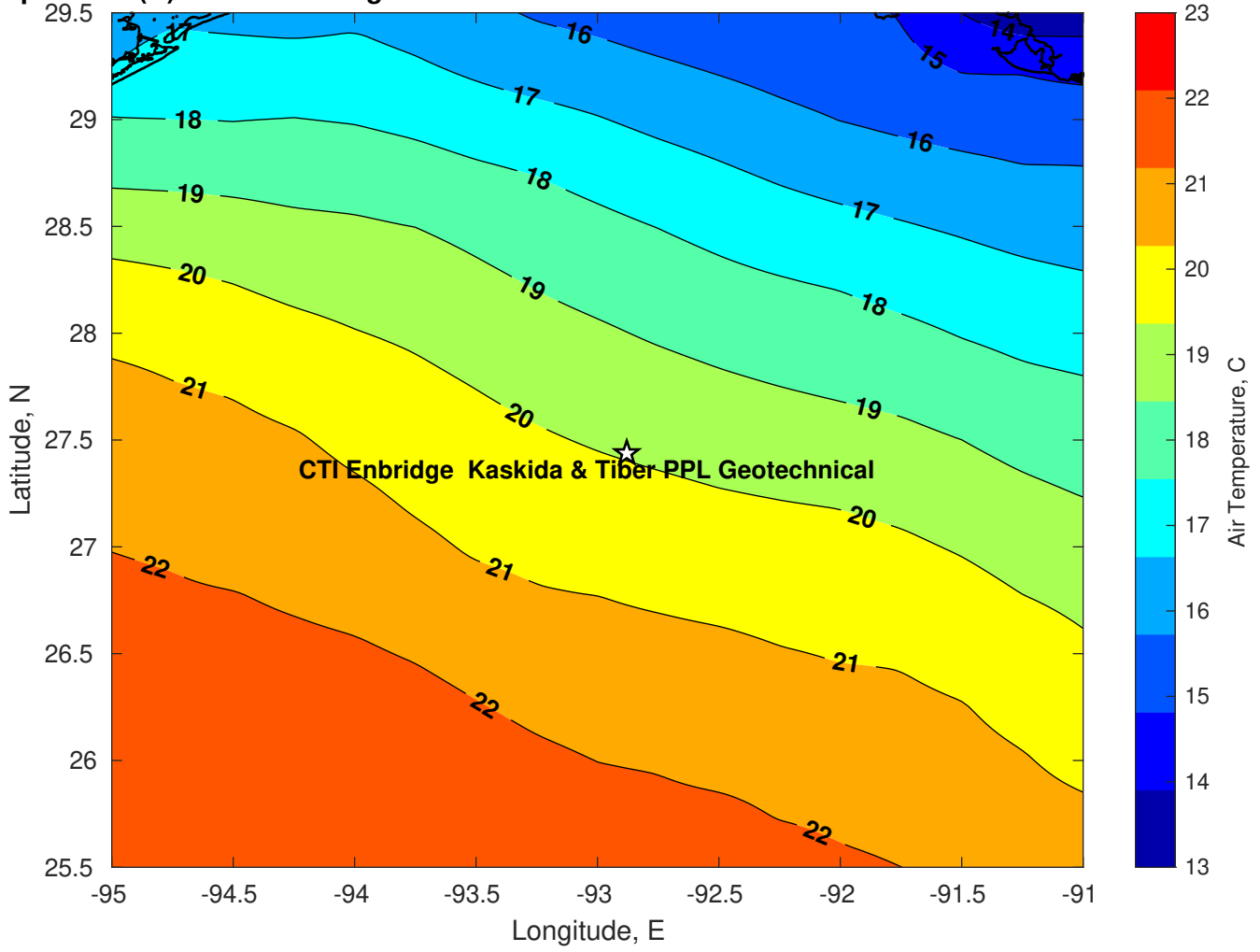
Surface Pressure (mb) for CTI Enbridge Kaskida & Tiber PPL Geotechnical at 08-Mar-2025 00:00:00



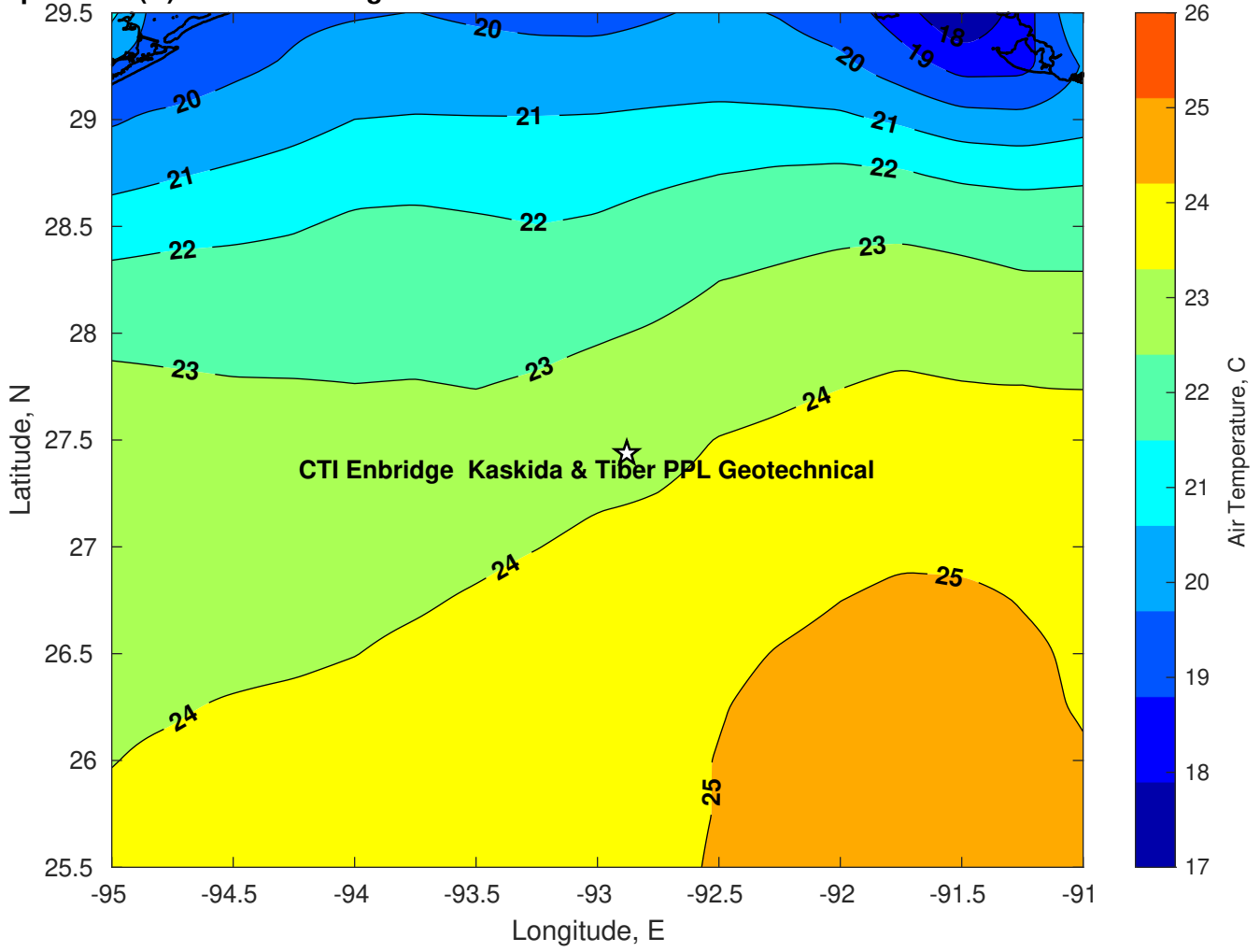
Surface Pressure (mb) for CTI Enbridge Kaskida & Tiber PPL Geotechnical at 09-Mar-2025 00:00:00



Air Temperature (C) for CTI Enbridge Kaskida & Tiber PPL Geotechnical at 07-Mar-2025



**Air Temperature (C) for CTI Enbridge Kaskida & Tiber PPL Geotechnical at 07-Mar-2025**



**Air Temperature (C) for CTI Enbridge Kaskida & Tiber PPL Geotechnical at 07-Mar-2025**

