
Marine Weather Forecast for CSA (ONHYM) PPL EBS - Cote d'Ivoire
Forecast valid as of 08-Mar-2025 0900 GMT

All times are local.

Today

Winds: NW, 10-15 kts.
Waves: N, 2-3 feet, 14-15 sec.
No currents available.

Tonight

Winds: NW, 10-15 kts.
Waves: N, 2-3 feet, 13-14 sec.
No currents available.

Sunday

Winds: NW, 10-15 kts.
Waves: N, 3-4 feet, 12-13 sec.
No currents available.

Sunday Night

Winds: NW, 10-15 kts.
Waves: N, 3-4 feet, 11-12 sec.
No currents available.

Monday

Winds: N, 10-15 kts.
Waves: N, 2-3 feet, 11-12 sec.
No currents available.

Monday Night

Winds: N, 10-15 kts.
Waves: N, 2-3 feet, 10-11 sec.
No currents available.

Tuesday

Winds: NW, 10-15 kts.
Waves: N, 2-3 feet, 10-11 sec.
No currents available.

Tuesday Night

Winds: NW, 10-15 kts.
Waves: N, 3-4 feet, 9-10 sec.
No currents available.

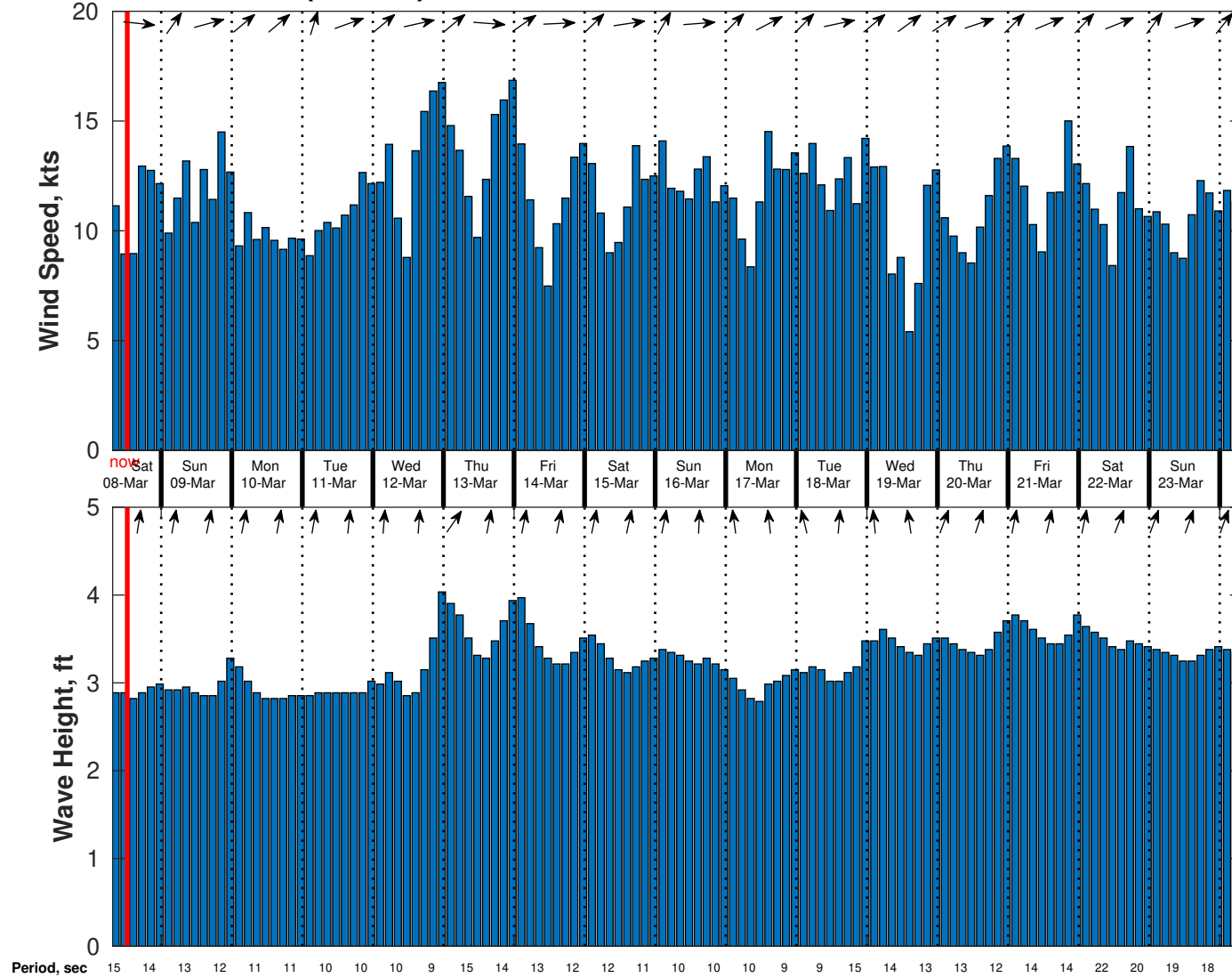
Wednesday

Winds: NW, 15-20 kts.
Waves: N, 3-4 feet, 9-10 sec.
No currents available.

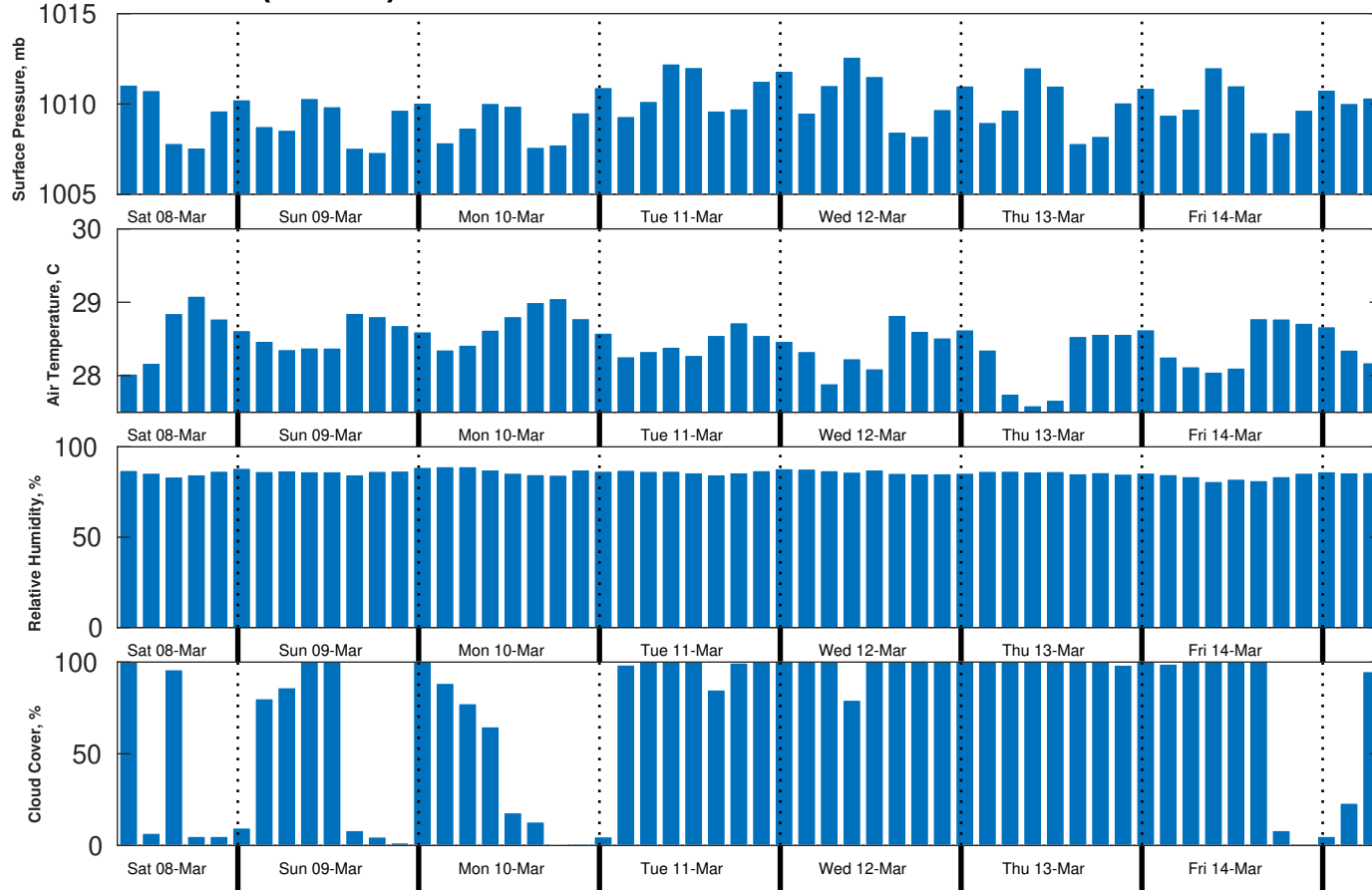
Wednesday Night

Winds: NW, 15-20 kts.
Waves: N, 4-5 feet, 15-16 sec.
No currents available.

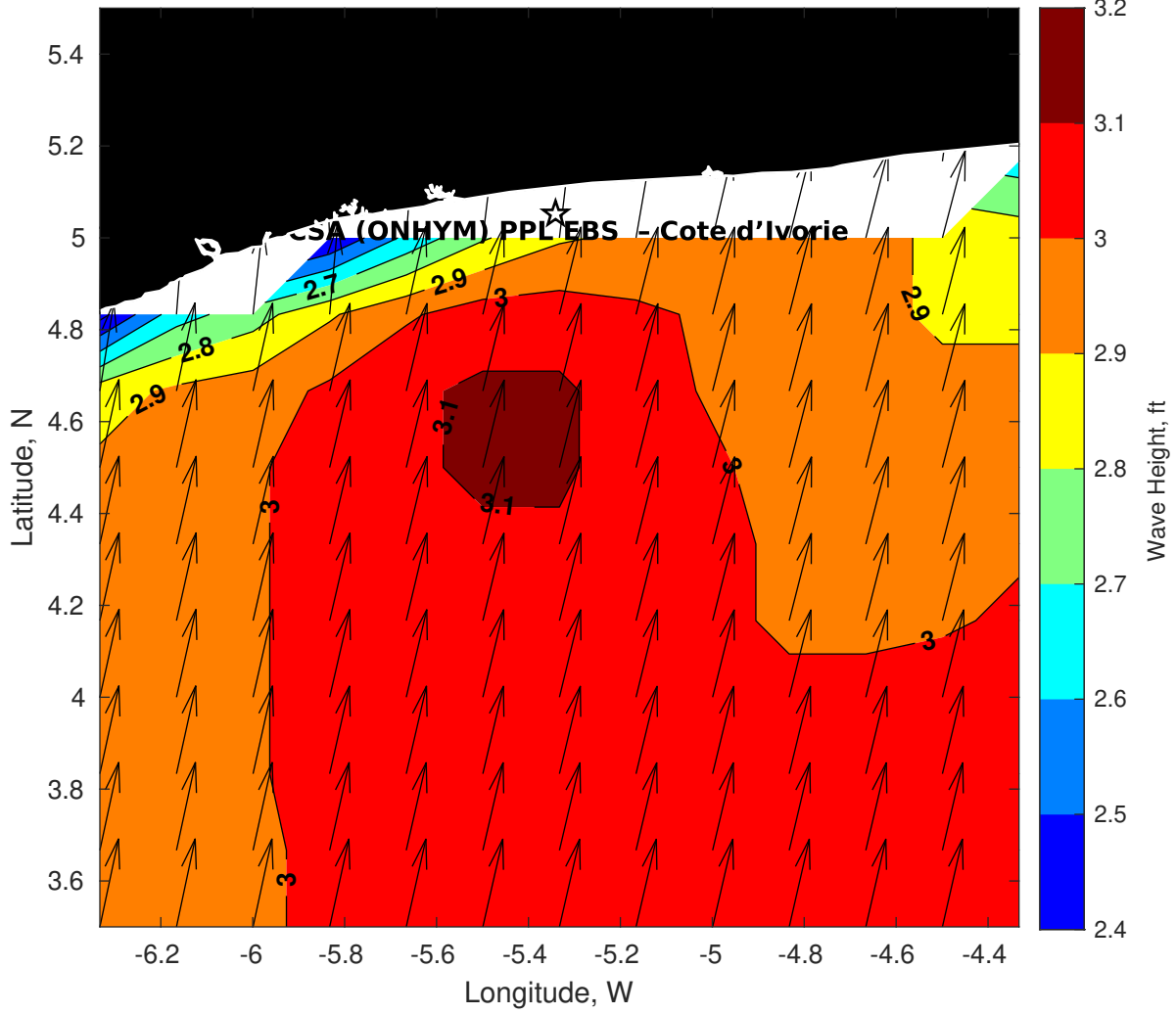
Wind & Wave Forecast for CSA (ONHYM) PPL EBS - Cote d'Ivoire from 08-Mar-2025 07:00:00 to 24-Mar-2025 07:00:00



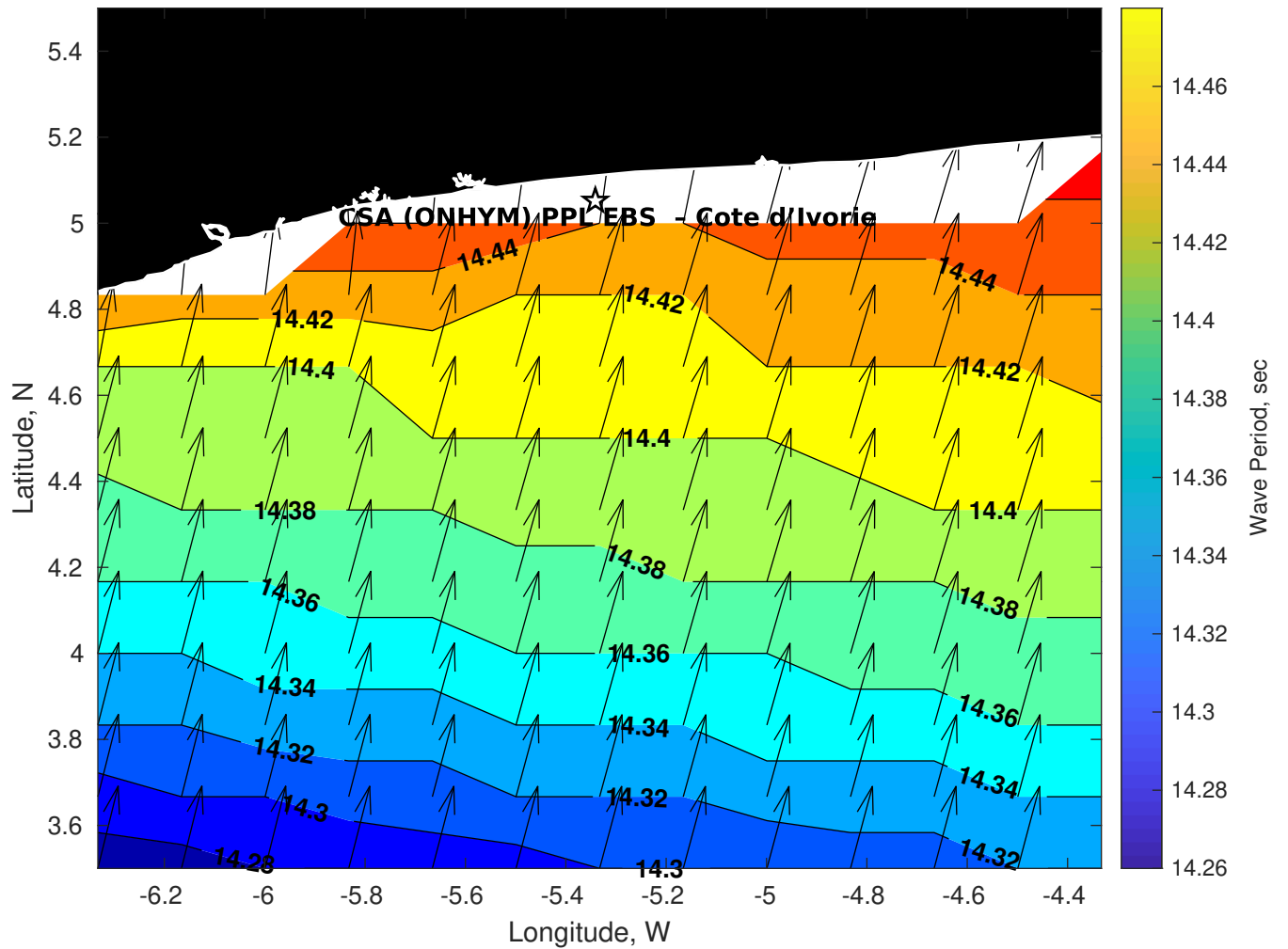
Met Forecast for CSA (ONHYM) PPL EBS - Cote d'Ivoire from 08-Mar-2025 06:00:00 to 15-Mar-2025 06:00:00



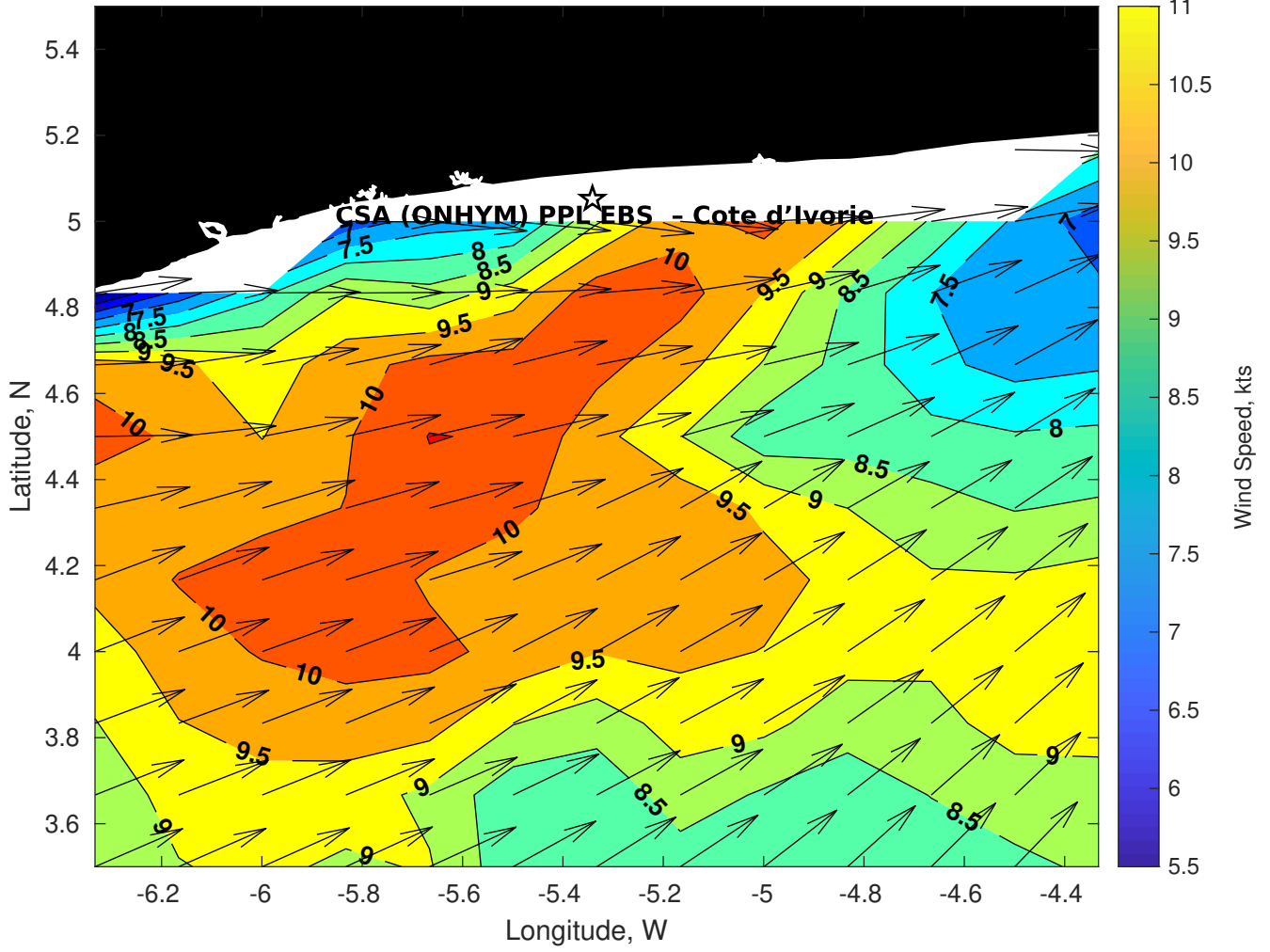
Wave Height (ft) for CSA (ONHYM) PPL EBS - Cote d'Ivoire at 08-Mar-2025 09:00:00



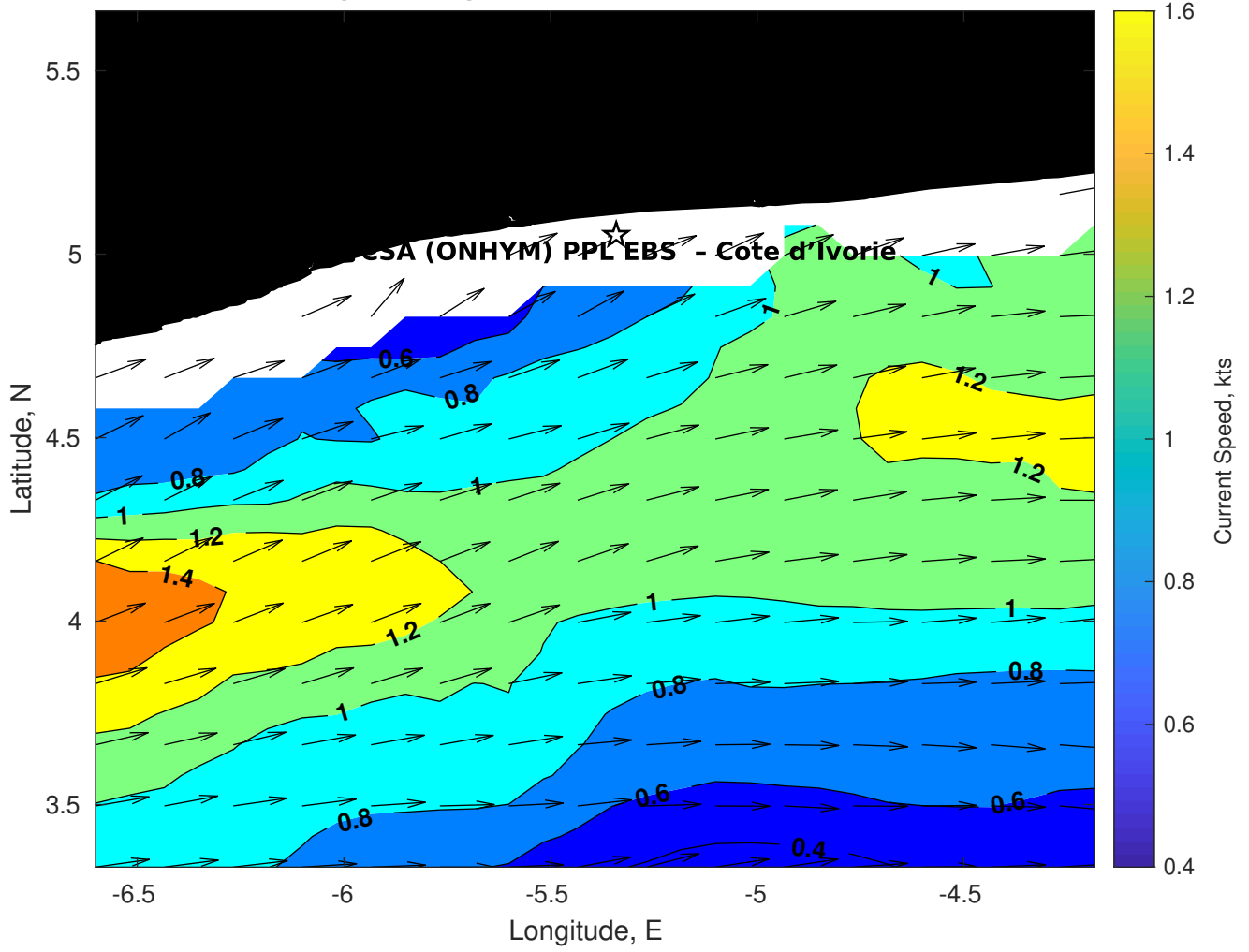
Wave Period (sec) for CSA (ONHYM) PPL EBS - Cote d'Ivoire at 08-Mar-2025 09:00:00



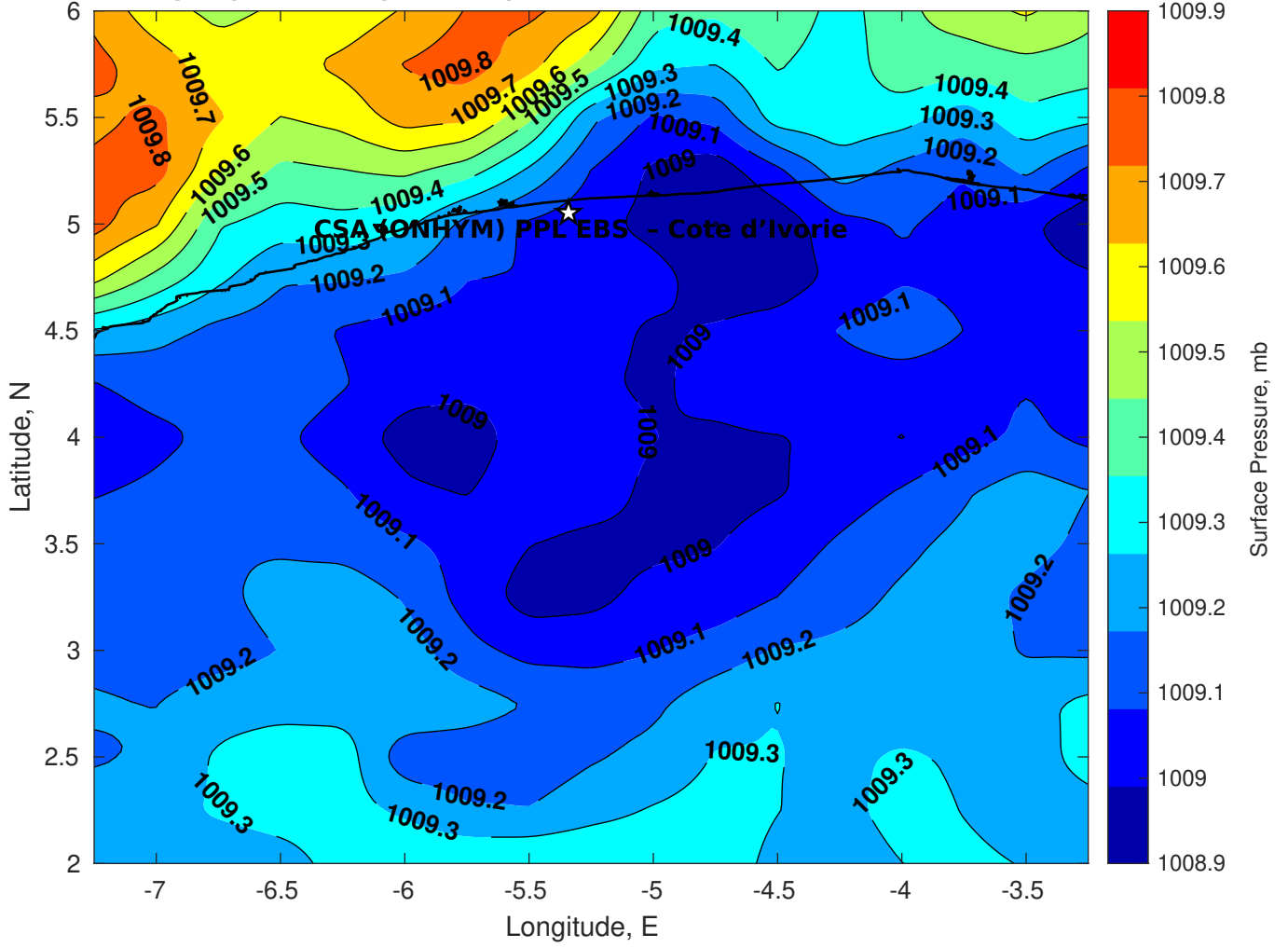
Winds (kts) for CSA (ONHYM) PPL EBS - Cote d'Ivoire at 08-Mar-2025 09:00:00



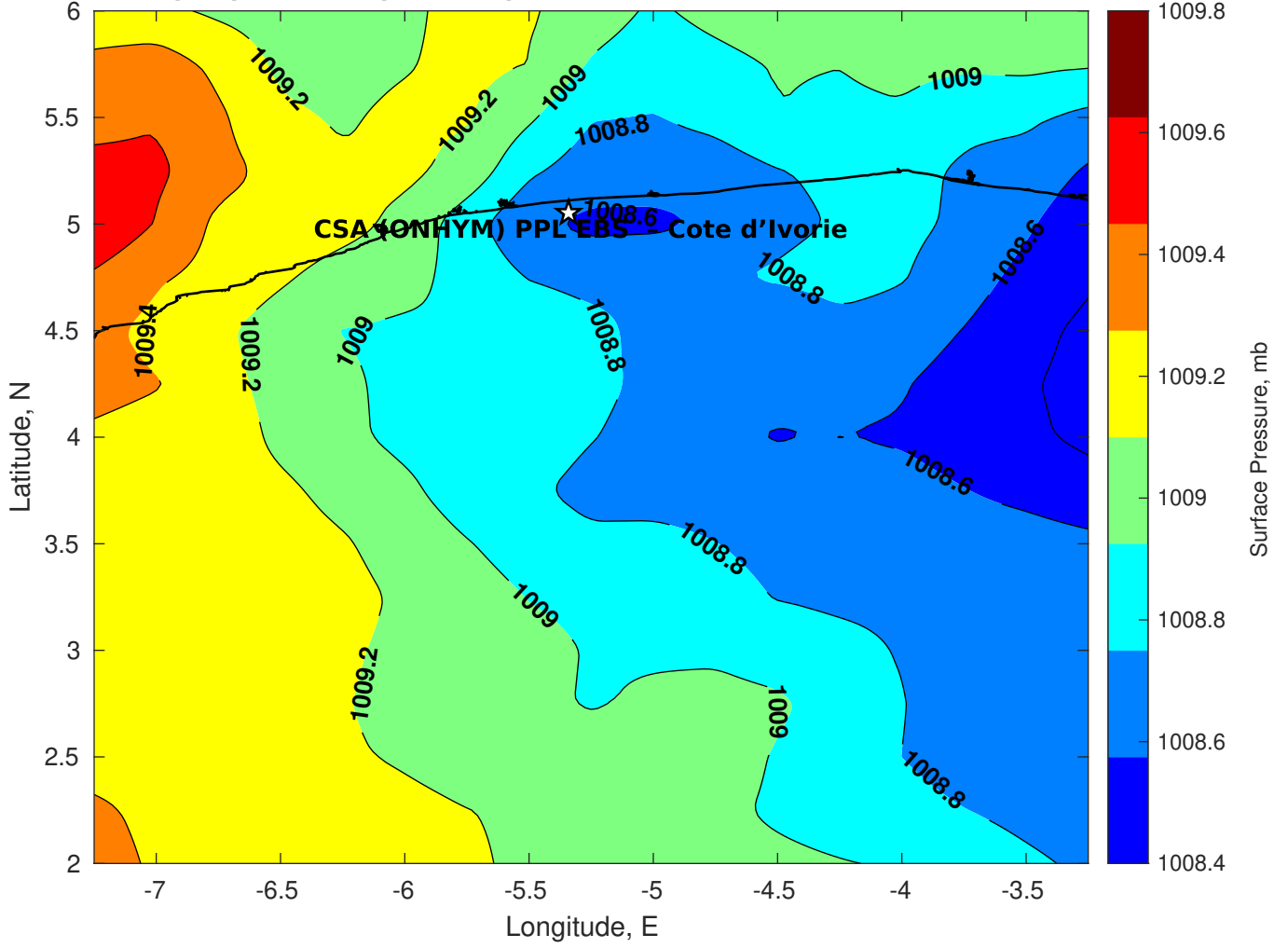
Surface Currents for CSA (ONHYM) PPL EBS - Cote d'Ivoire at 07-Mar-2025 00:00:00



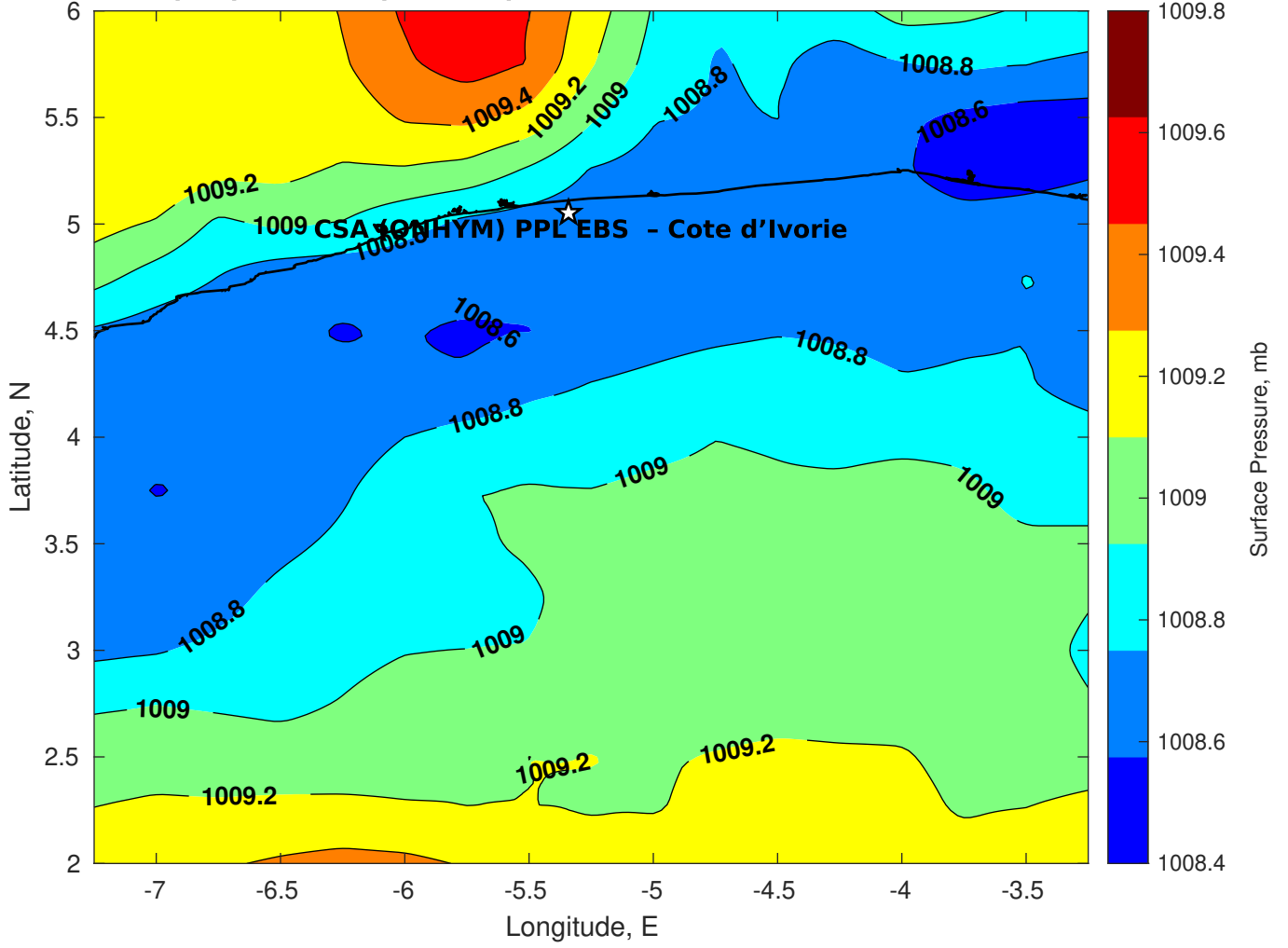
Surface Pressure (mb) for CSA (ONHYM) PPL EBS - Cote d'Ivoire at 08-Mar-2025 06:00:00



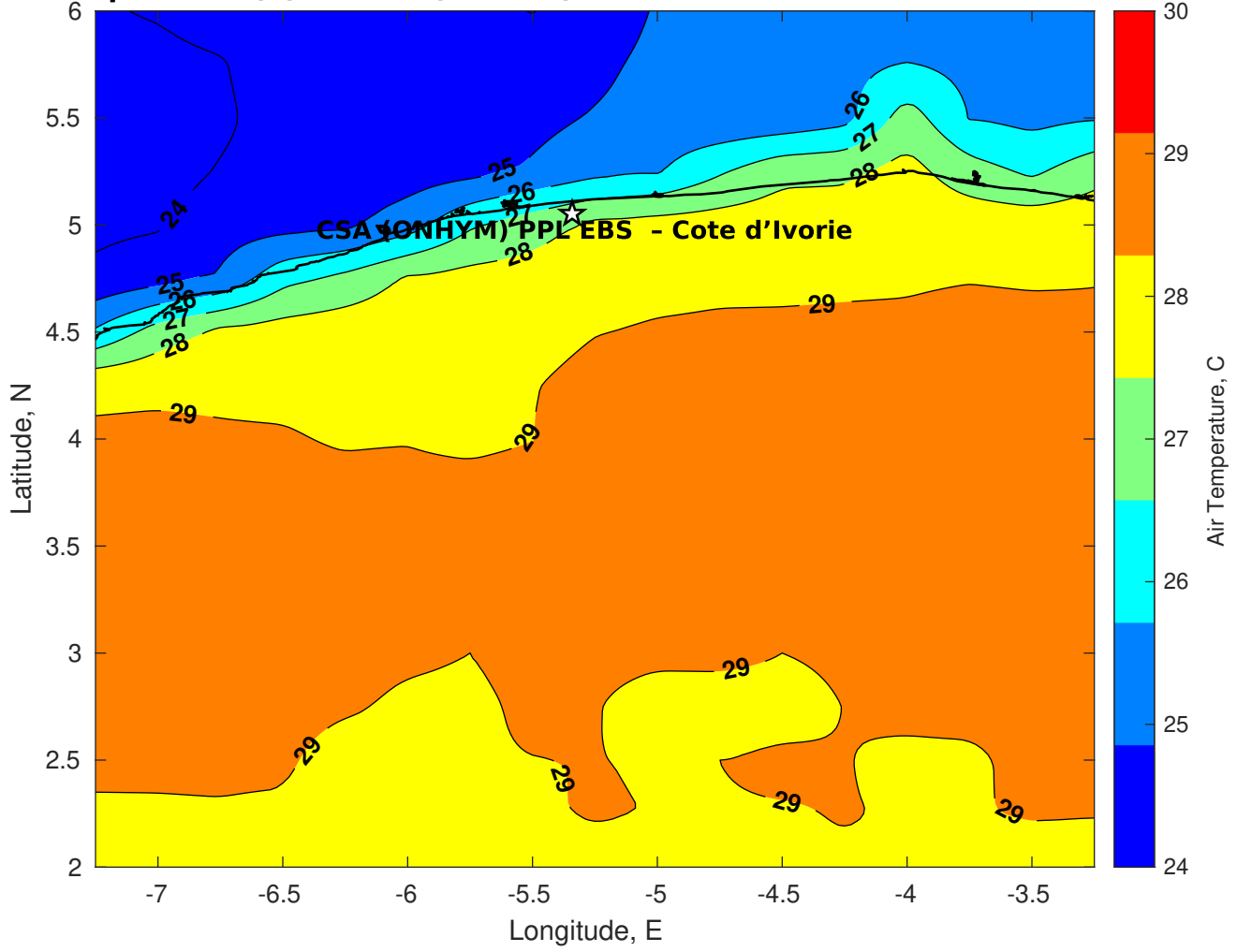
Surface Pressure (mb) for CSA (ONHYM) PPL EBS - Cote d'Ivoire at 09-Mar-2025 06:00:00



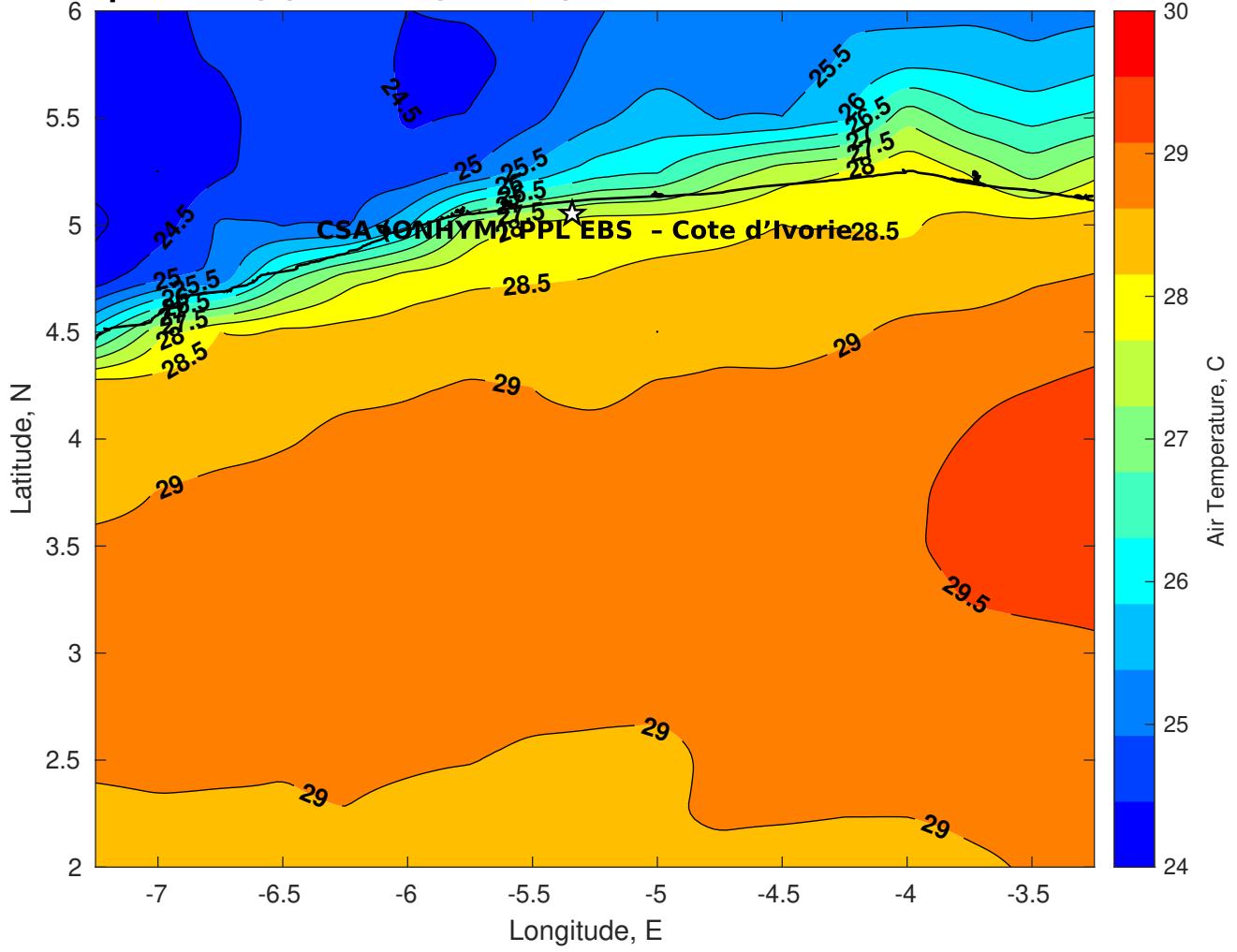
Surface Pressure (mb) for CSA (ONHYM) PPL EBS - Cote d'Ivoire at 10-Mar-2025 06:00:00



Air Temperature (C) for CSA (ONHYM) PPL EBS - Cote d'Ivoire at 08-Mar-2025



Air Temperature (C) for CSA (ONHYM) PPL EBS - Cote d'Ivoire at 08-Mar-2025



Air Temperature (C) for CSA (ONHYM) PPL EBS - Cote d'Ivoire at 08-Mar-2025

