
Marine Weather Forecast for CSA (ONHYM) PPL EBS - Western Sahara
Forecast valid as of 08-Mar-2025 0900 GMT

All times are local.

Today

Winds: N, 10-15 kts.
Waves: NW, 3-4 feet, 11-12 sec.
No currents available.

Tonight

Winds: N, 10-15 kts.
Waves: NW, 5-6 feet, 11-12 sec.
No currents available.

Sunday

Winds: N, 10-15 kts.
Waves: NW, 6-7 feet, 12-13 sec.
No currents available.

Sunday Night

Winds: NE, 10-15 kts.
Waves: NW, 6-7 feet, 12-13 sec.
No currents available.

Monday

Winds: NE, 10-15 kts.
Waves: NW, 6-7 feet, 12-13 sec.
No currents available.

Monday Night

Winds: N, 10-15 kts.
Waves: NW, 4-5 feet, 13-14 sec.
No currents available.

Tuesday

Winds: NE, 5-10 kts.
Waves: NW, 4-5 feet, 13-14 sec.
No currents available.

Tuesday Night

Winds: NE, 10-15 kts.
Waves: NW, 4-5 feet, 16-17 sec.
No currents available.

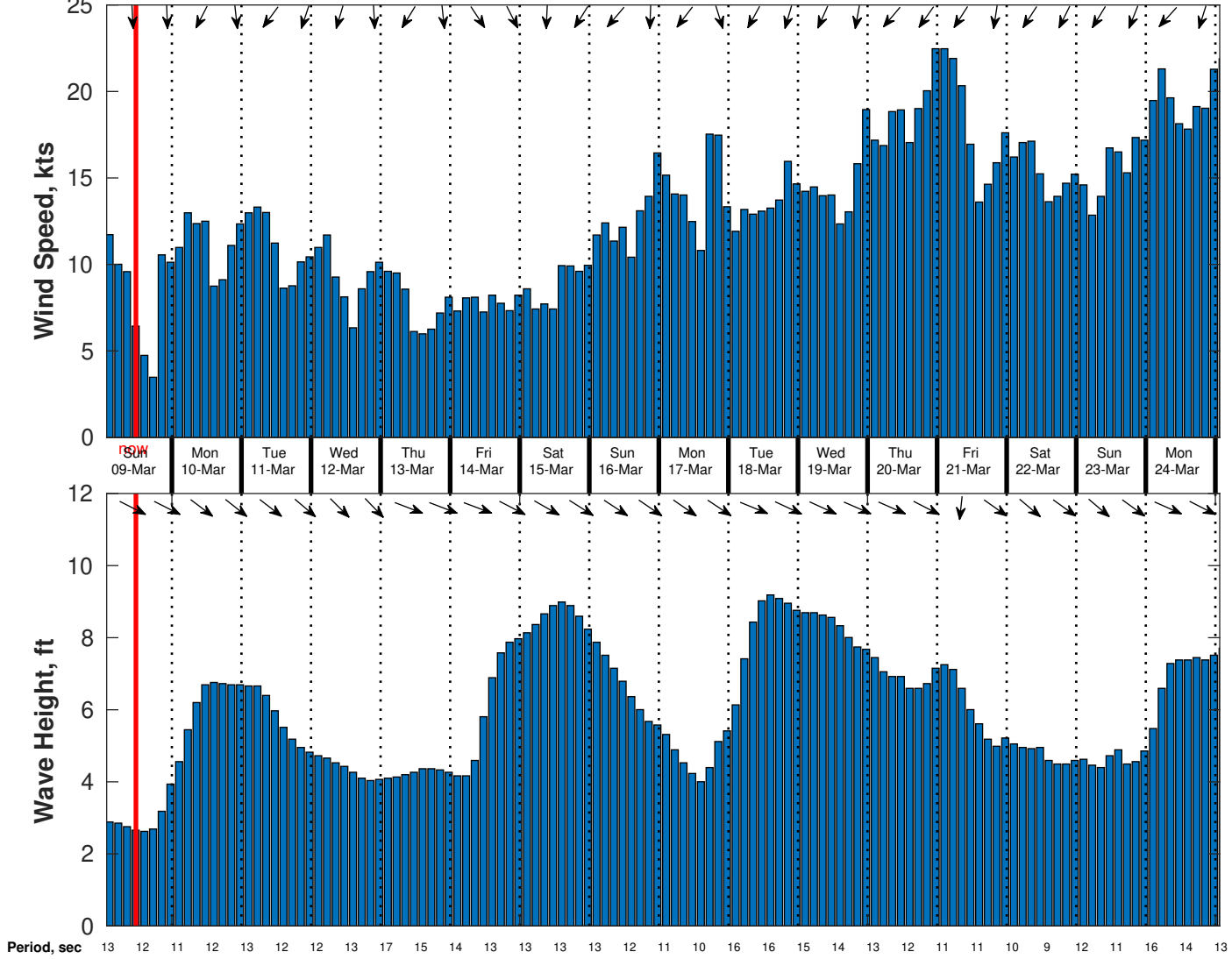
Wednesday

Winds: NE, 5-10 kts.
Waves: NW, 4-5 feet, 15-16 sec.
No currents available.

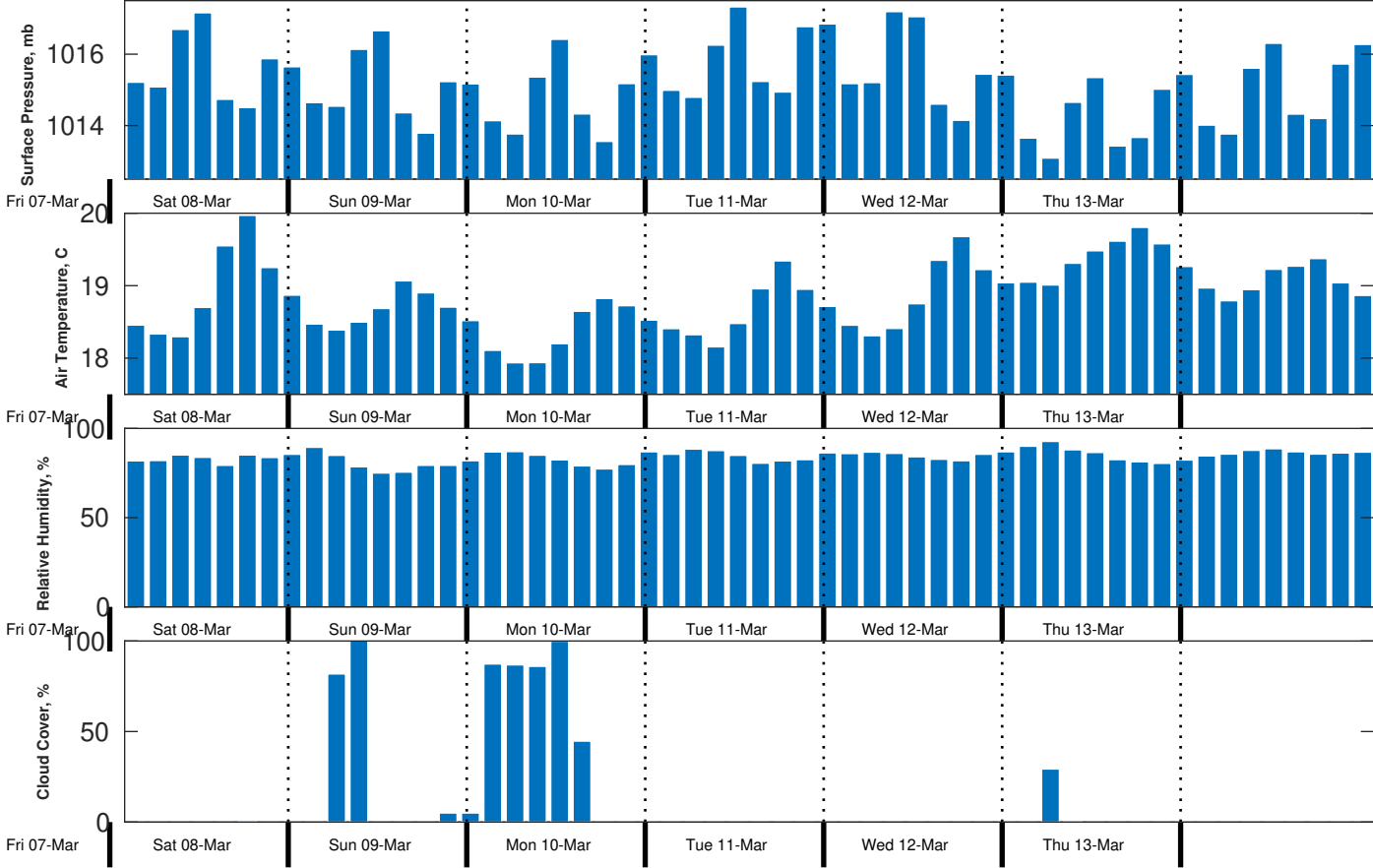
Wednesday Night

Winds: N, 5-10 kts.
Waves: NW, 4-5 feet, 14-15 sec.
No currents available.

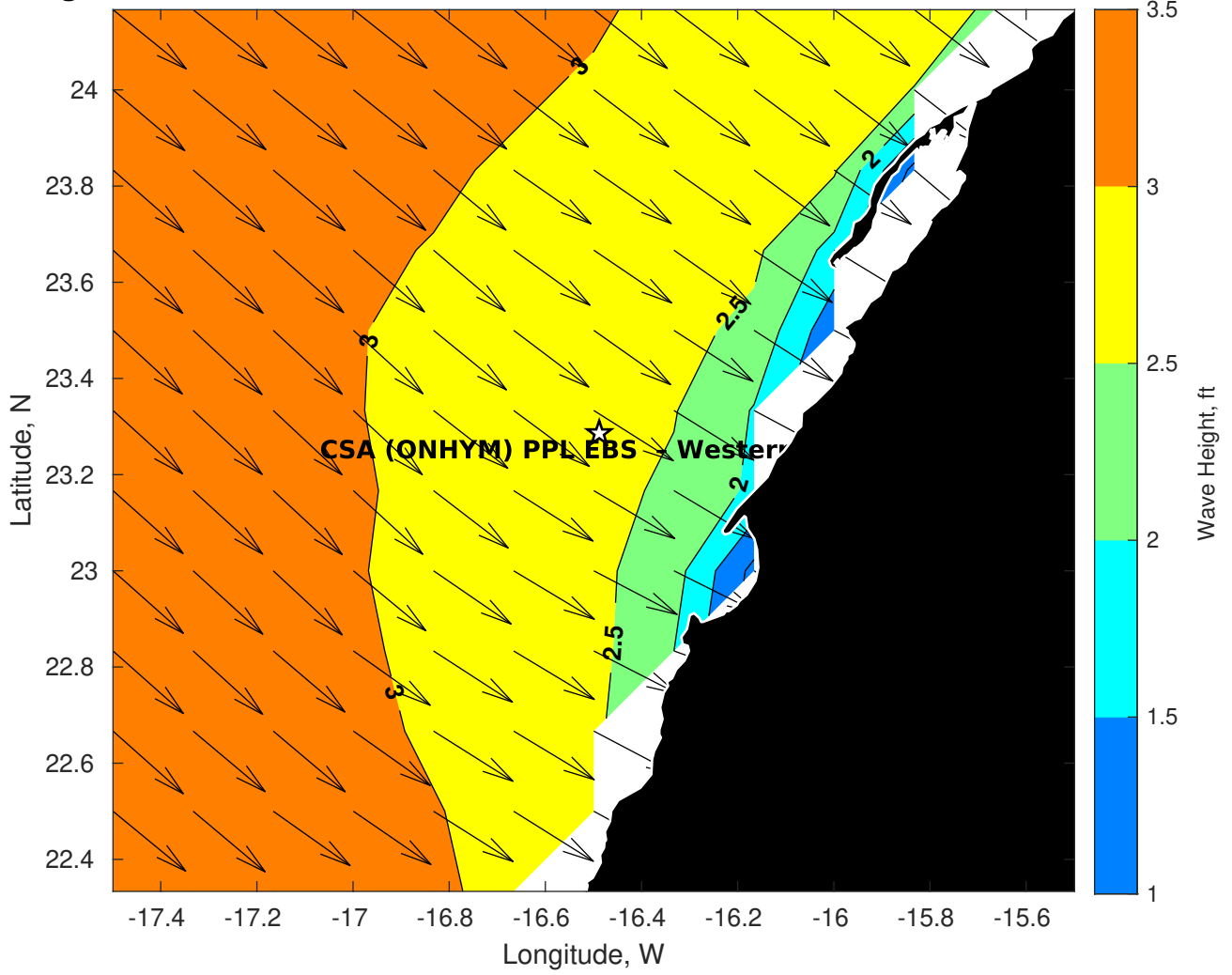
Wind & Wave Forecast for CSA (ONHYM) PPL EBS - Western Sahara from 08-Mar-2025 01:00:00 to 24-Mar-2025 01:00:00



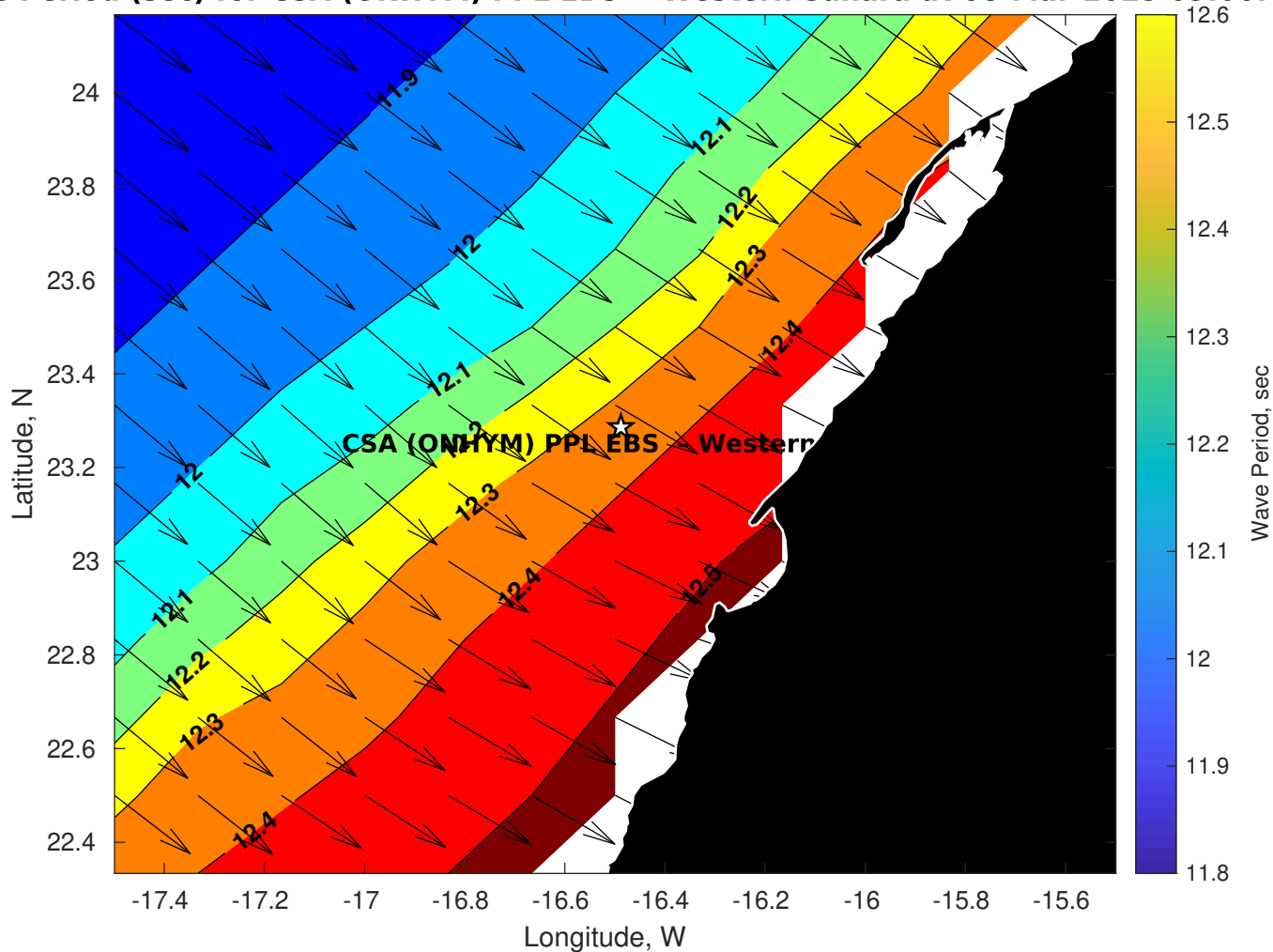
Met Forecast for CSA (ONHYM) PPL EBS - Western Sahara from 08-Mar-2025 00:00:00 to 15-Mar-2025 00:00:00



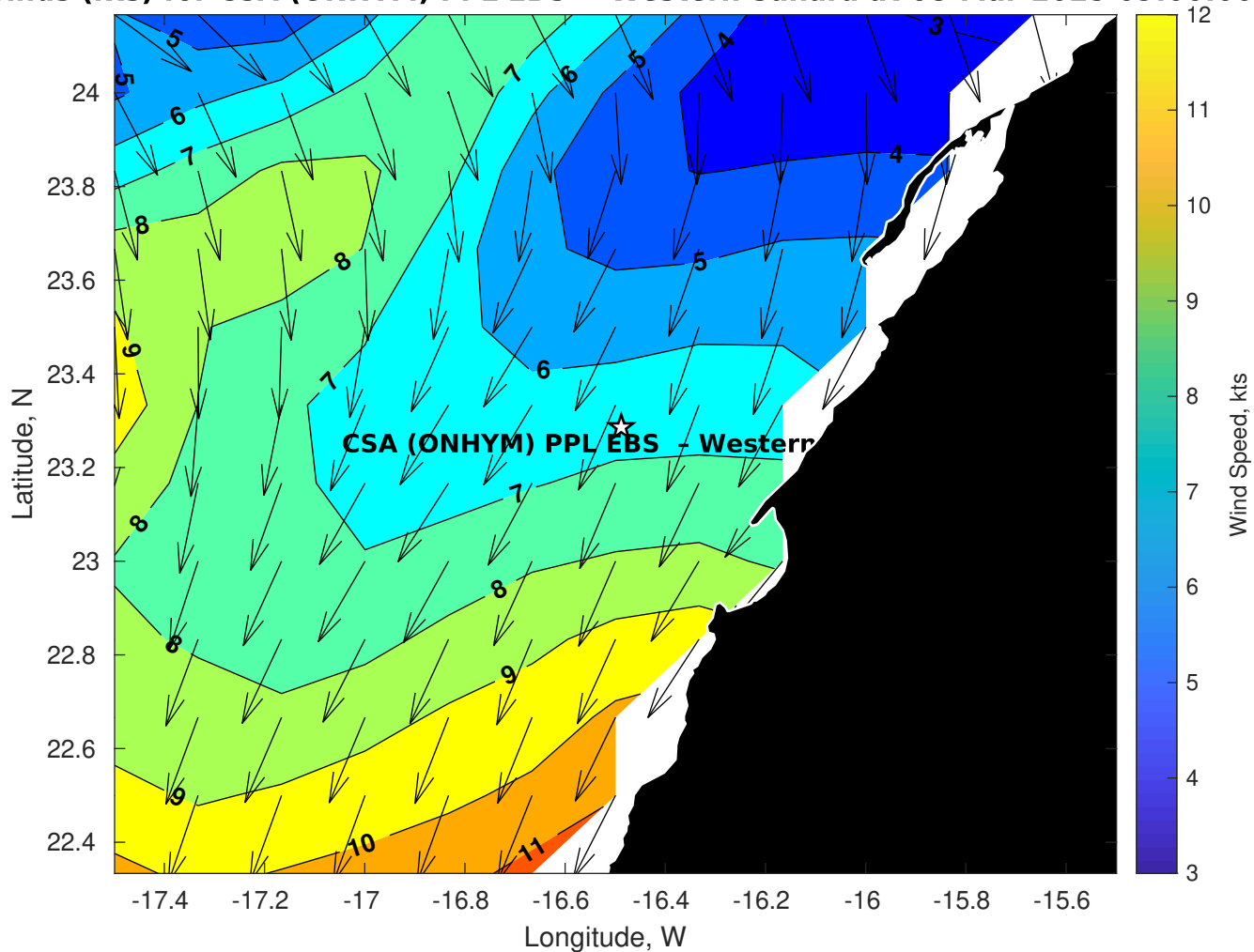
Wave Height (ft) for CSA (ONHYM) PPL EBS - Western Sahara at 08-Mar-2025 09:00:00



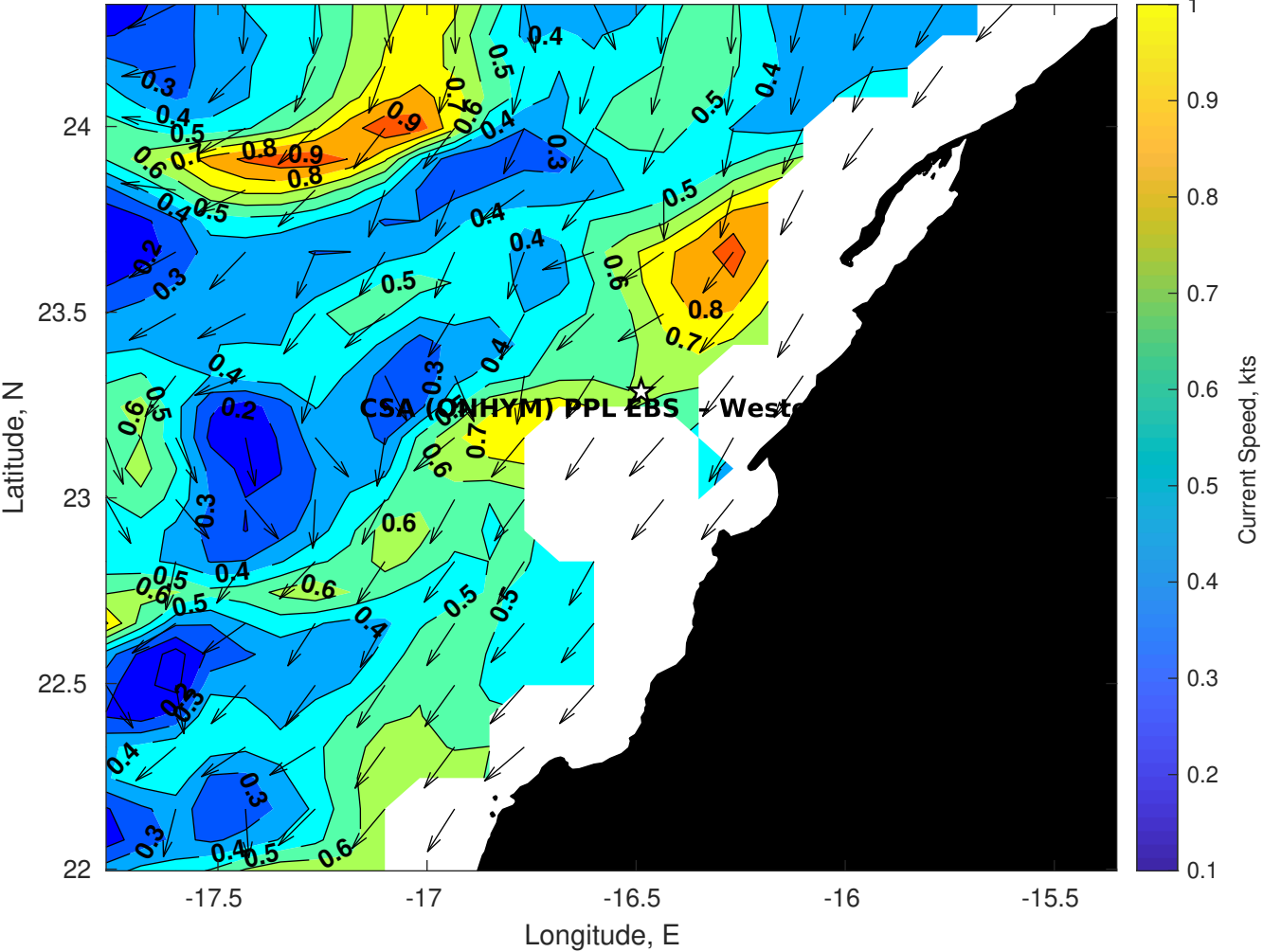
Wave Period (sec) for CSA (ONHYM) PPL EBS - Western Sahara at 08-Mar-2025 09:00:00



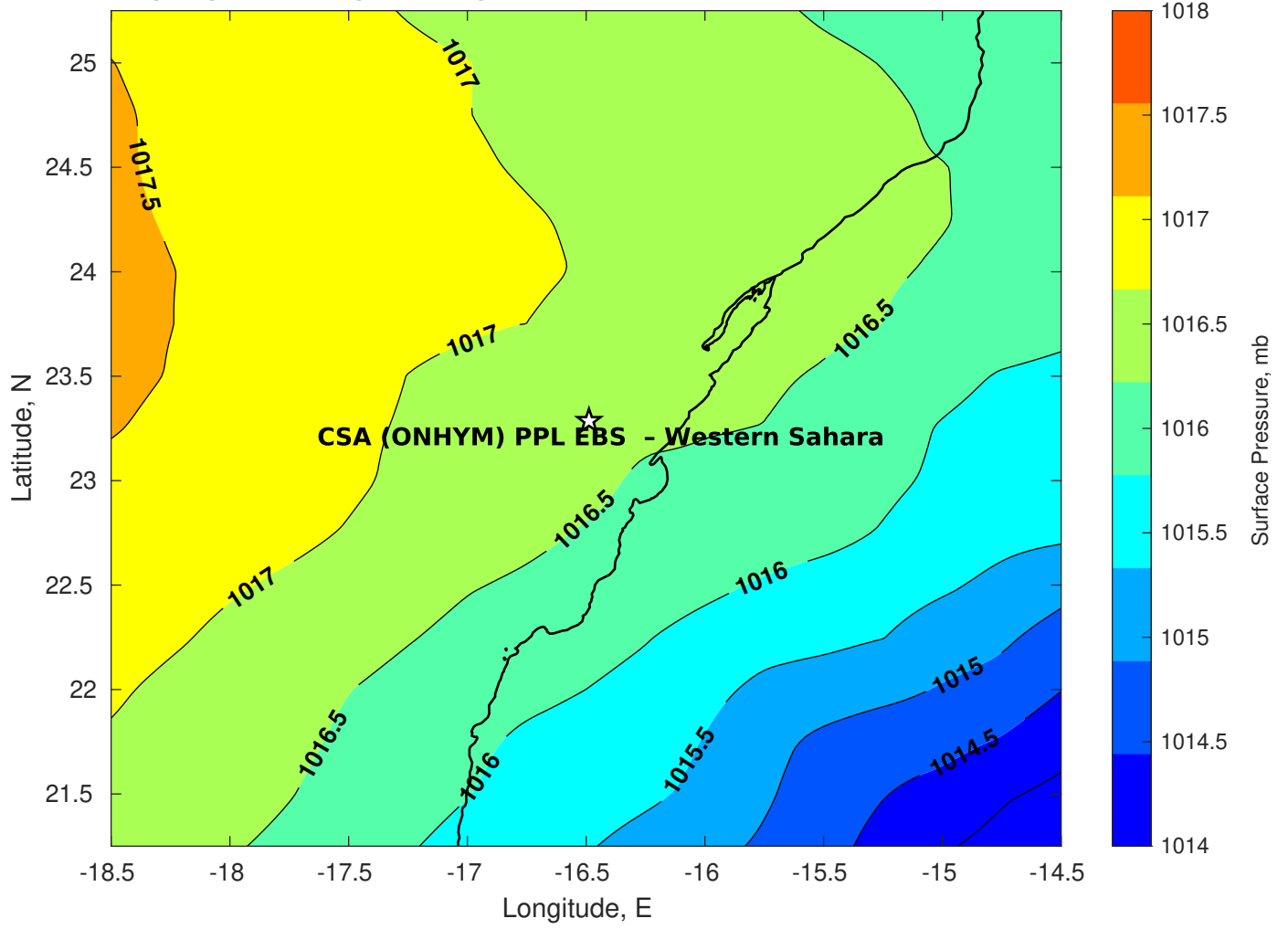
Winds (kts) for CSA (ONHYM) PPL EBS - Western Sahara at 08-Mar-2025 09:00:00



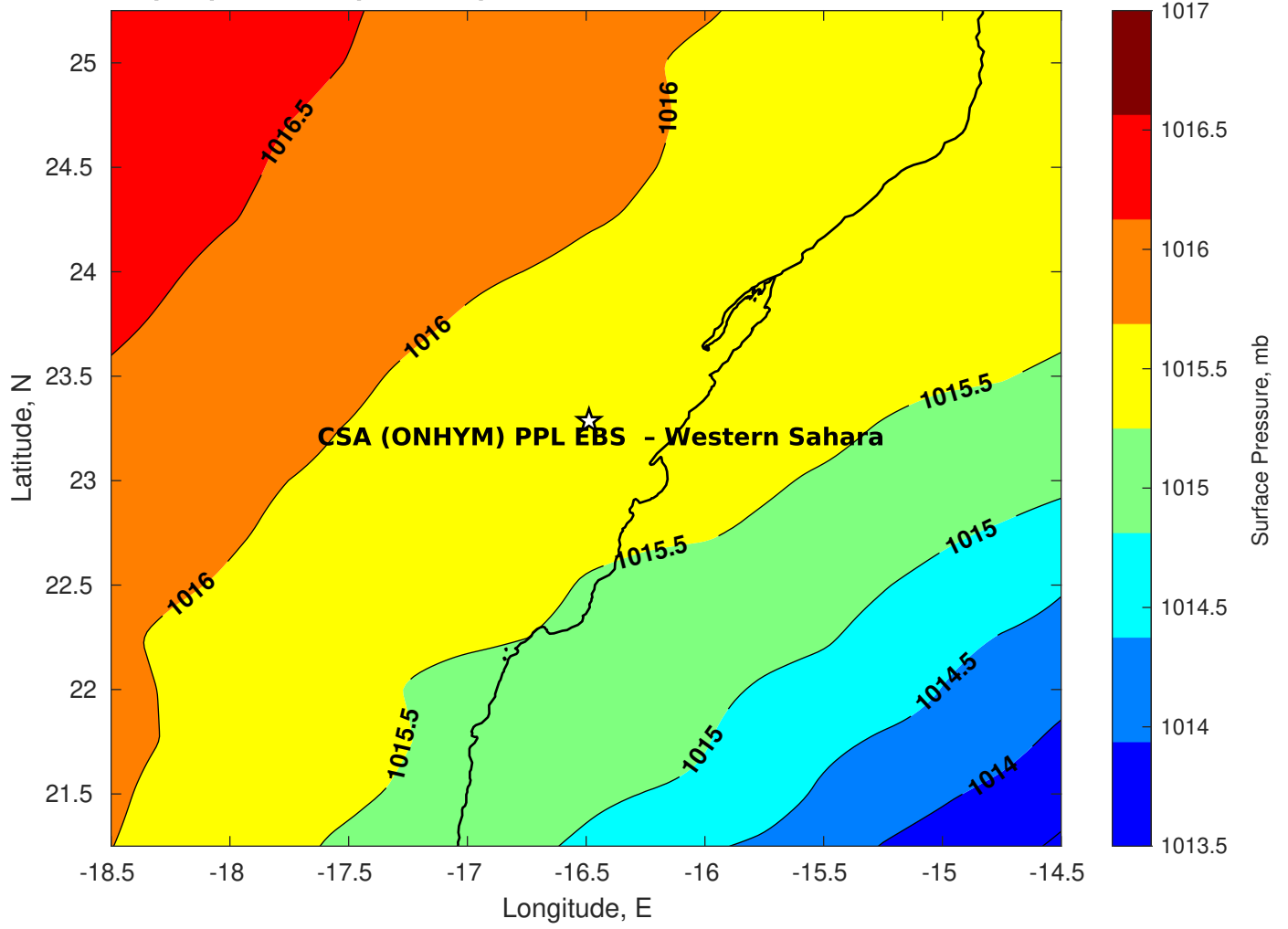
Surface Currents for CSA (ONHYM) PPL EBS - Western Sahara at 07-Mar-2025 00:00:00



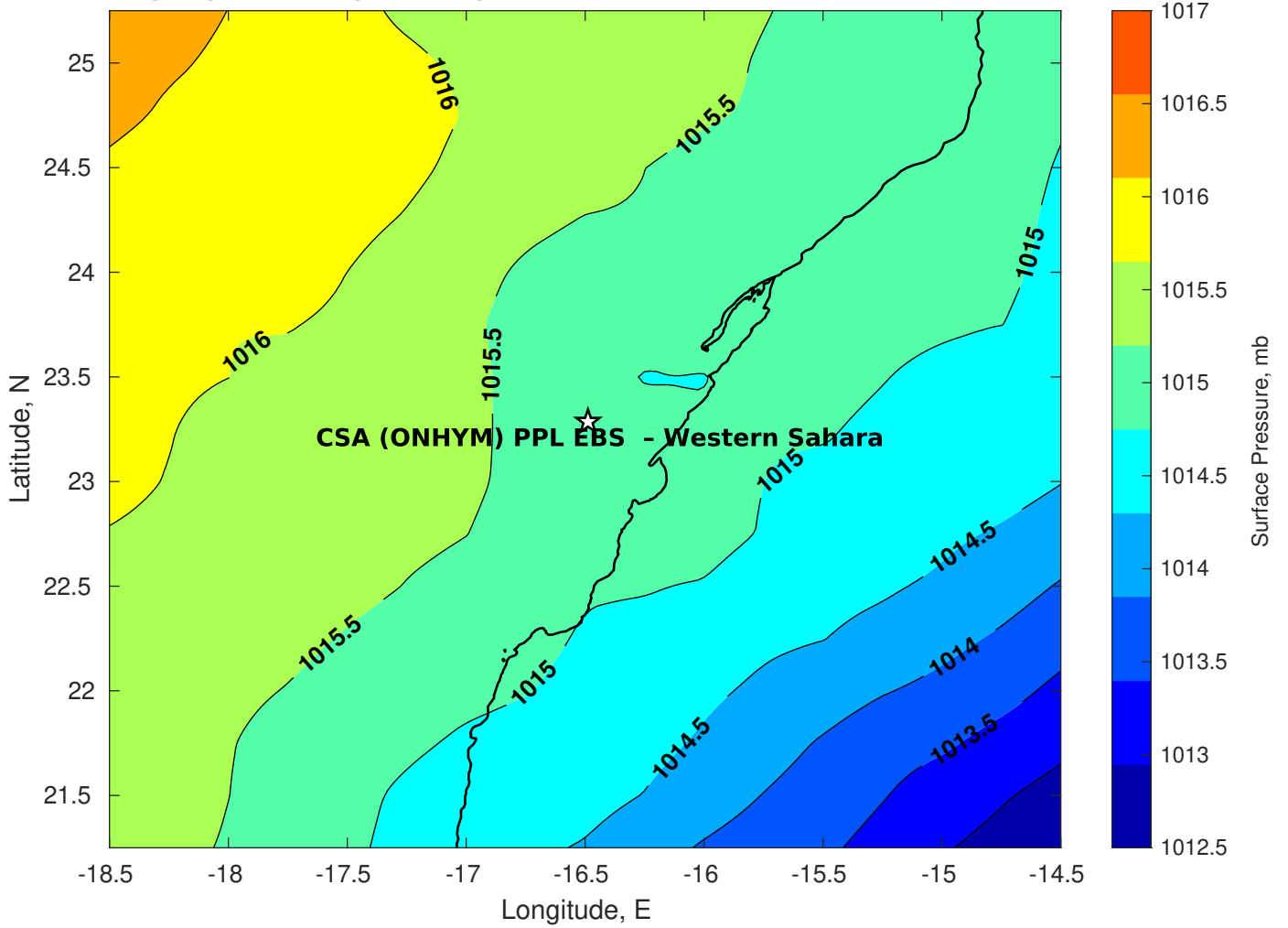
Surface Pressure (mb) for CSA (ONHYM) PPL EBS - Western Sahara at 08-Mar-2025 00:00:00



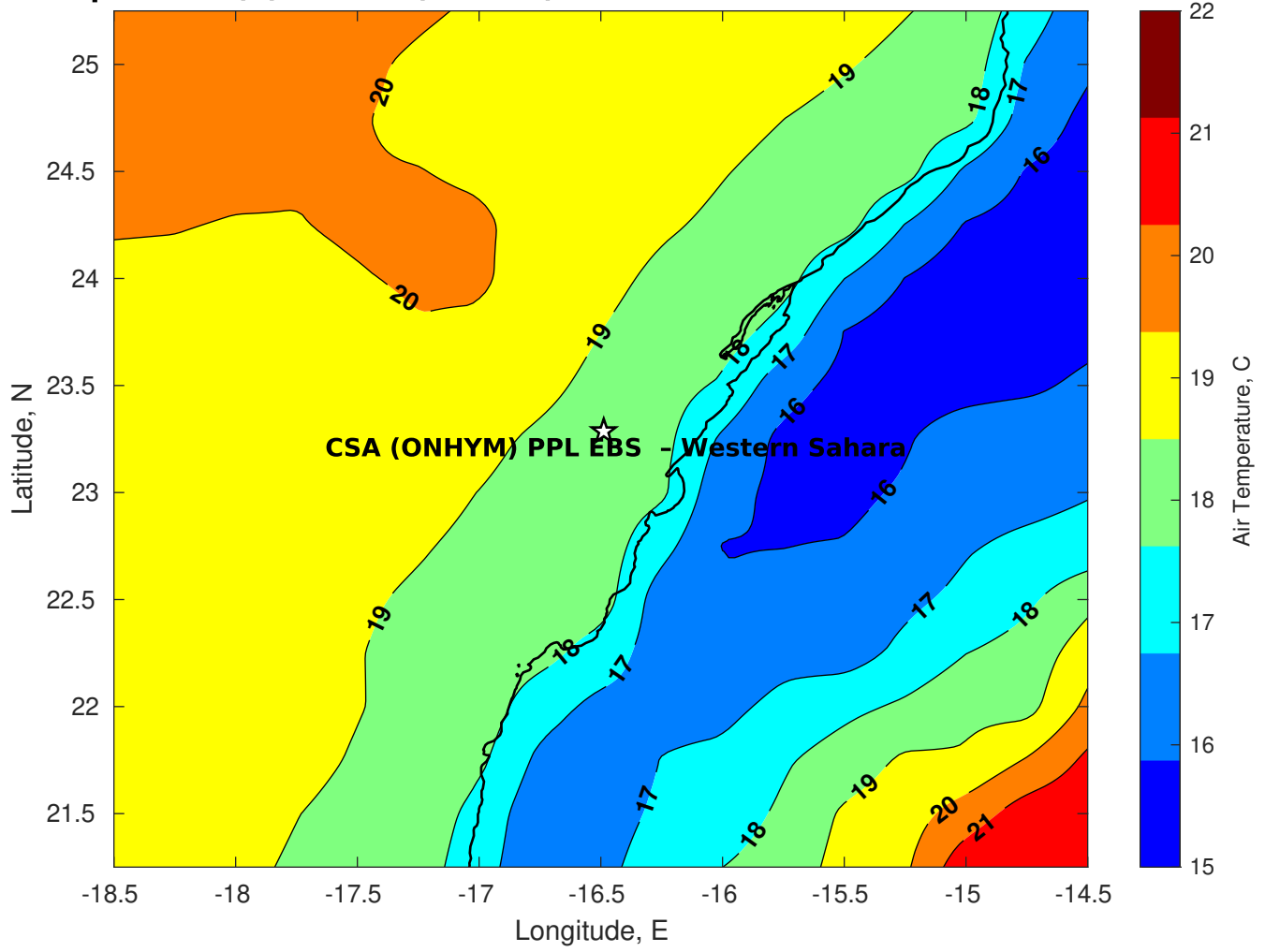
Surface Pressure (mb) for CSA (ONHYM) PPL EBS - Western Sahara at 09-Mar-2025 00:00:00



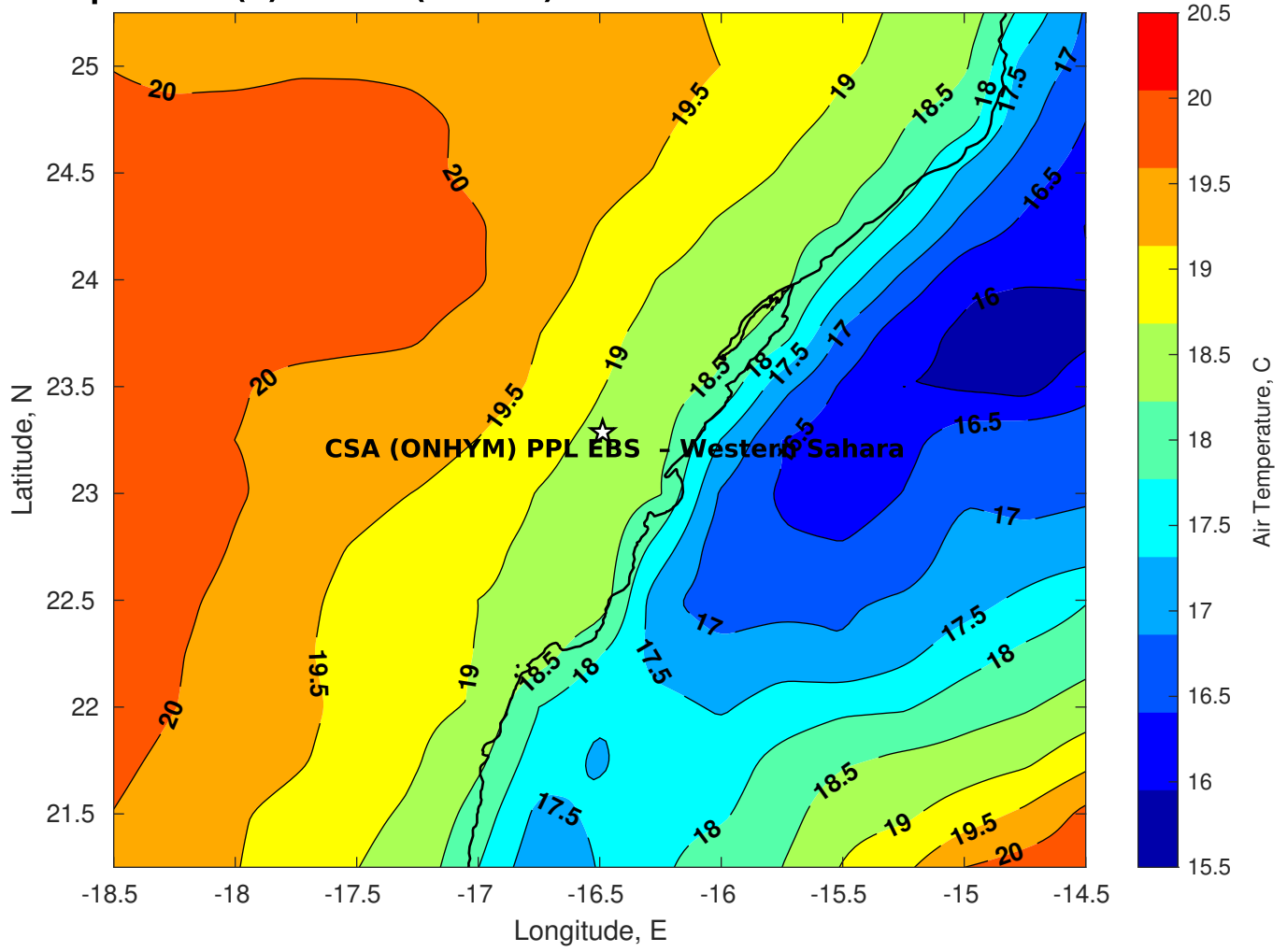
Surface Pressure (mb) for CSA (ONHYM) PPL EBS - Western Sahara at 10-Mar-2025 00:00:00



Air Temperature (C) for CSA (ONHYM) PPL EBS - Western Sahara at 08-Mar-2025



Air Temperature (C) for CSA (ONHYM) PPL EBS - Western Sahara at 08-Mar-2025



Air Temperature (C) for CSA (ONHYM) PPL EBS - Western Sahara at 08-Mar-2025

