

\*\*\*\*\*

Marine Weather Forecast for Shell Noches GC19 PPL Geotechnical  
Forecast valid as of 08-Mar-2025 0900 GMT

\*\*\*\*\*

All times are local.

Today

Winds: NW, 10-15 kts.  
Waves: N, 3-4 feet, 5-6 sec.  
No currents available.

Tonight

Winds: N, 10-15 kts.  
Waves: N, 3-4 feet, 6-7 sec.  
No currents available.

Saturday

Winds: N, 10-15 kts.  
Waves: N, 4-5 feet, 5-6 sec.  
No currents available.

Sunday Night

Winds: NW, 20-25 kts.  
Waves: W, 6-7 feet, 7-8 sec.  
No currents available.

Sunday

Winds: NW, 20-25 kts.  
Waves: N, 5-6 feet, 6-7 sec.  
No currents available.

Monday Night

Winds: NW, 5-10 kts.  
Waves: NW, 2-3 feet, 6-7 sec.  
No currents available.

Monday

Winds: N, 20-25 kts.  
Waves: NW, 6-7 feet, 7-8 sec.  
No currents available.

Tuesday Night

Winds: N, 10-15 kts.  
Waves: NE, 1-2 feet, 5-6 sec.  
No currents available.

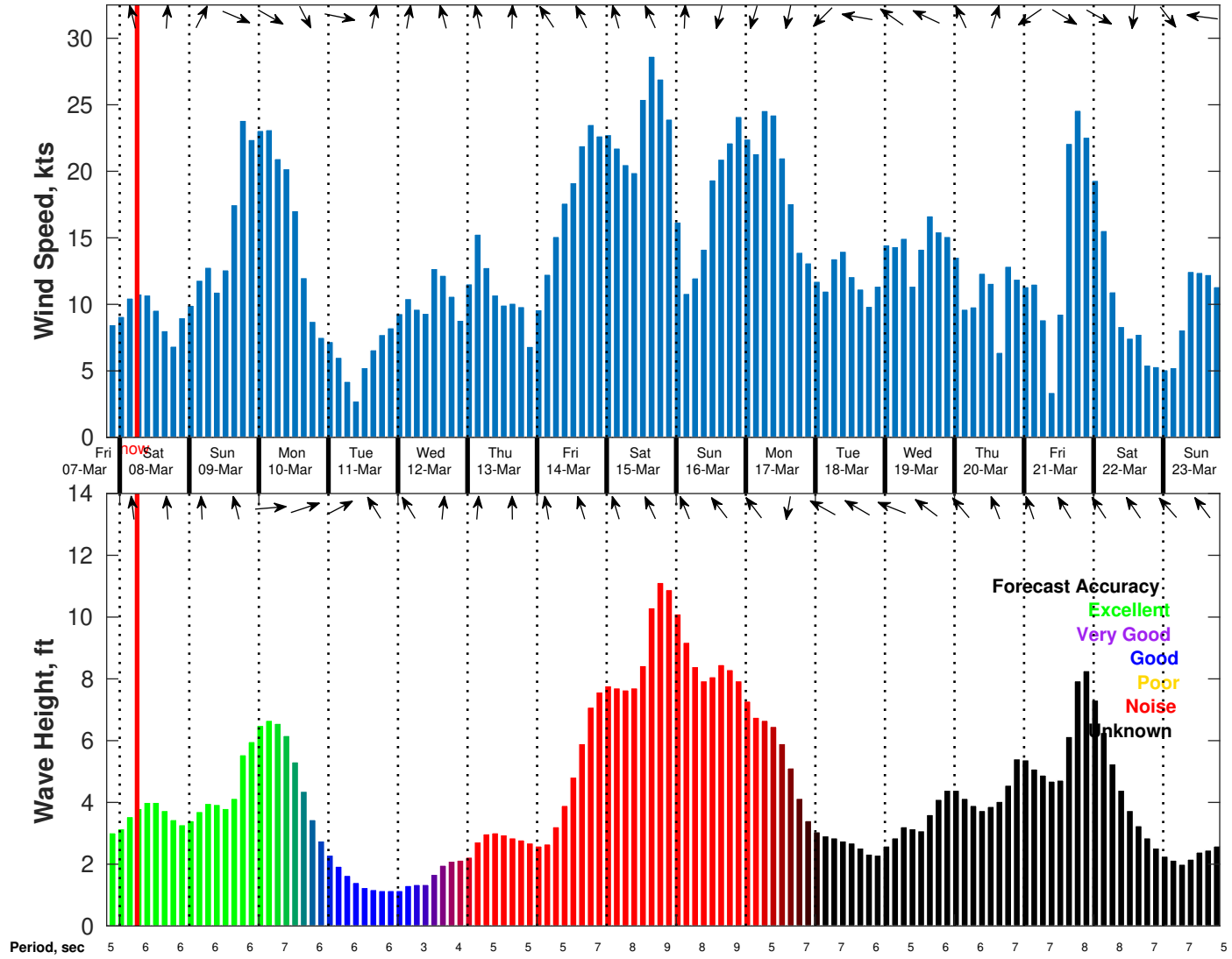
Tuesday

Winds: N, 5-10 kts.  
Waves: NE, 1-2 feet, 6-7 sec.  
No currents available.

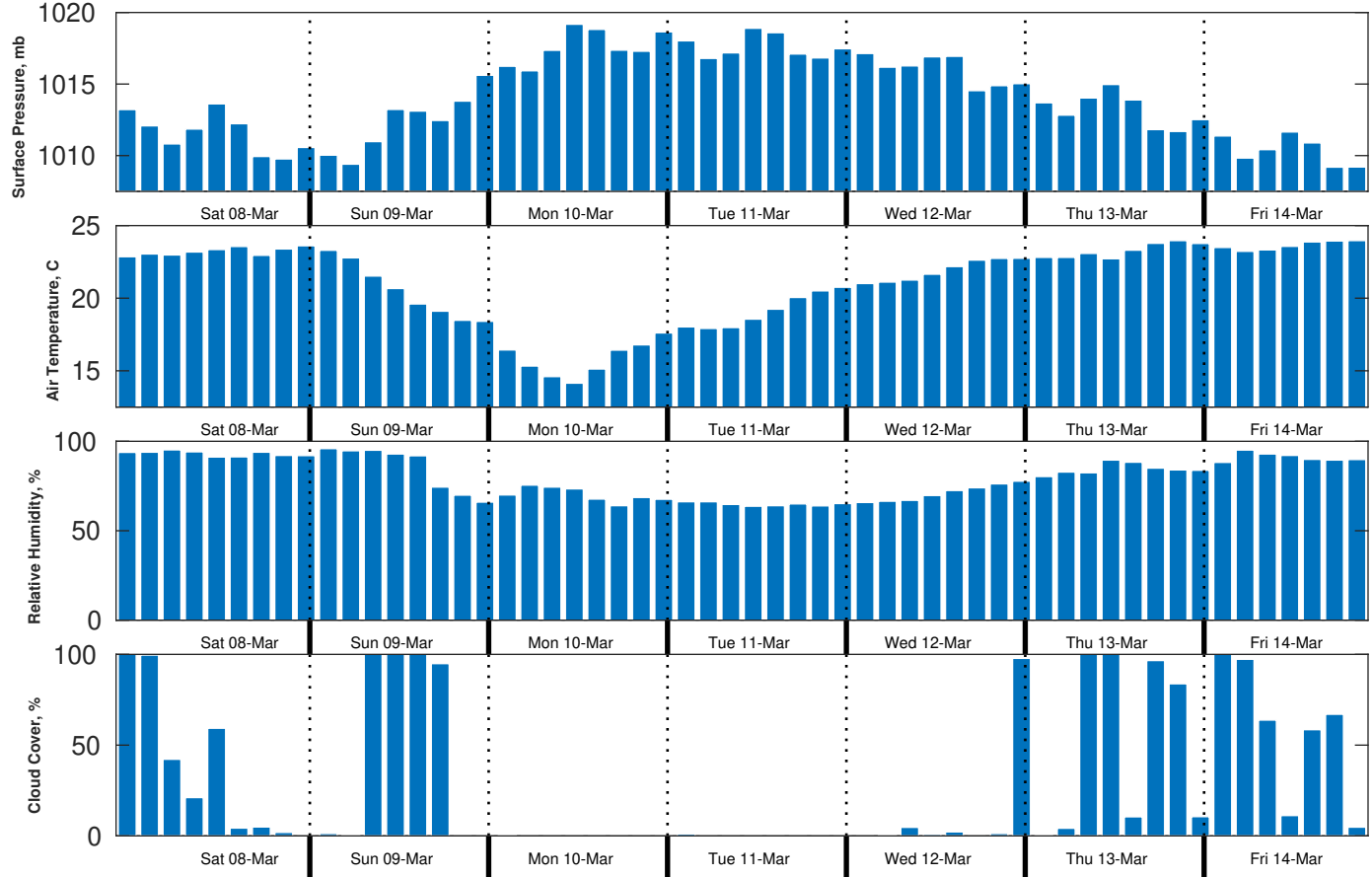
Wednesday Night

Winds: N, 15-20 kts.  
Waves: N, 2-3 feet, 4-5 sec.  
No currents available.

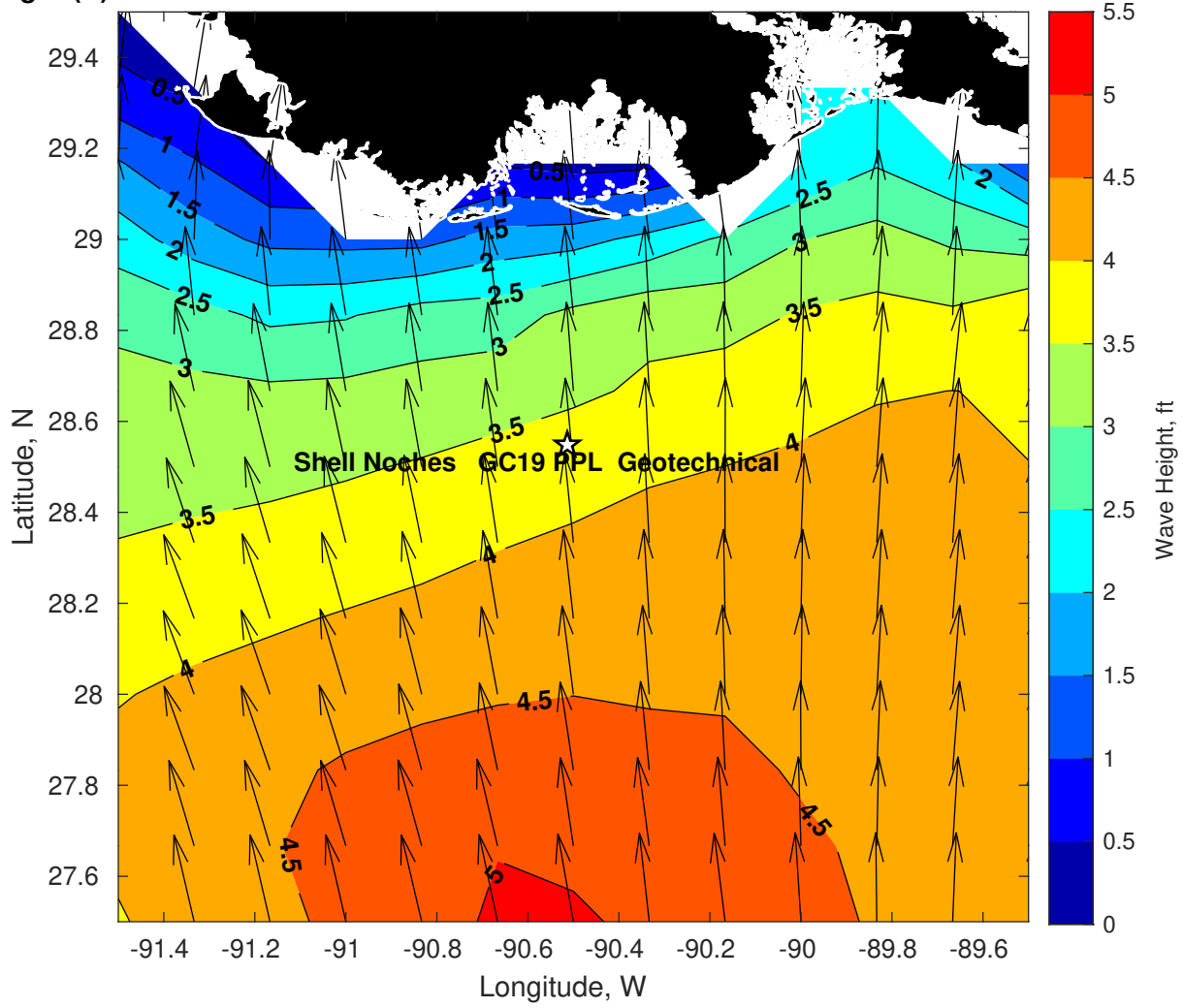
**Wind & Wave Forecast for Shell Noches GC19 PPL Geotechnical from 07-Mar-2025 20:00:00 to 23-Mar-2025 20:00:00**



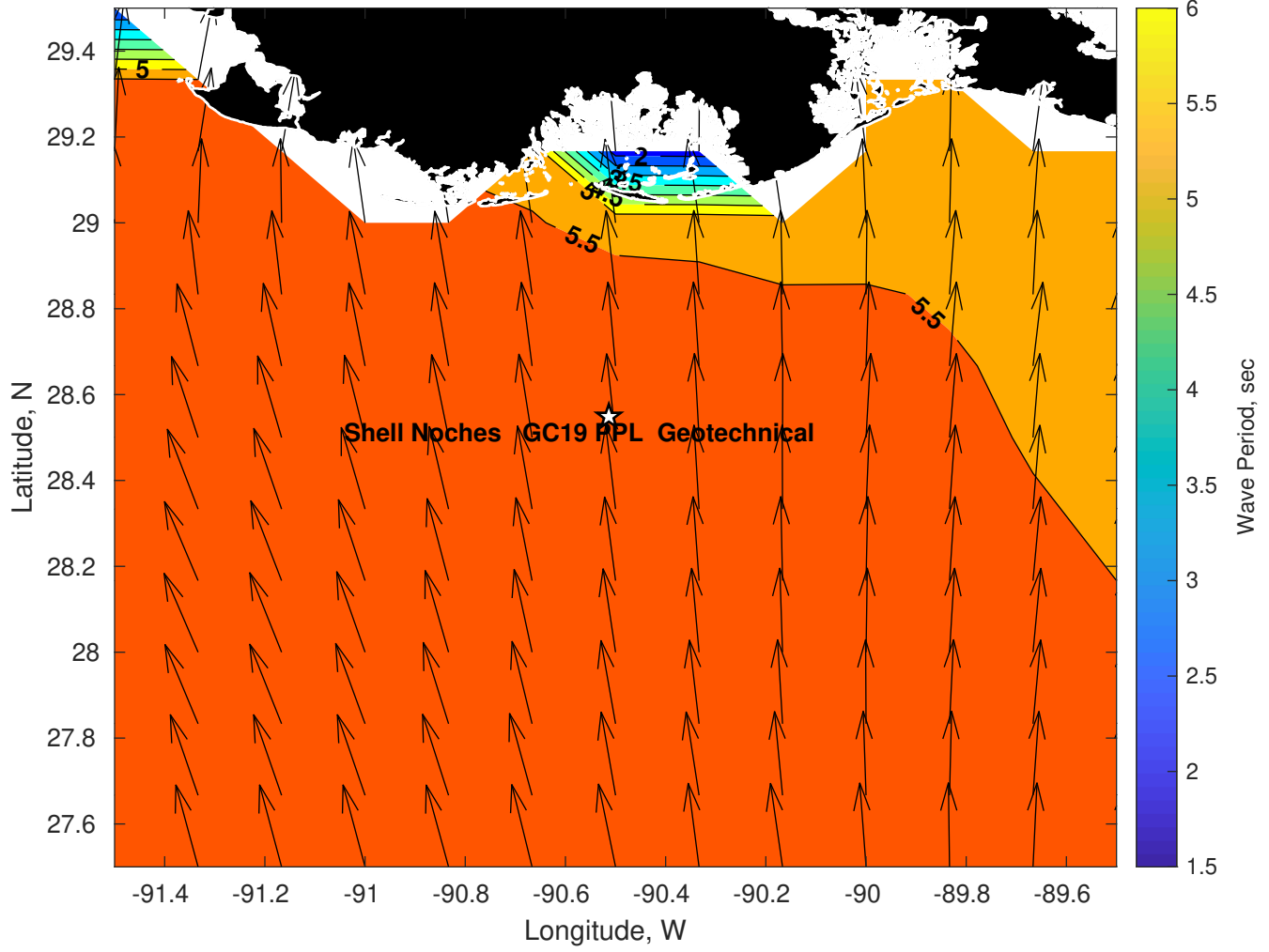
**Met Forecast for Shell Noches GC19 PPL Geotechnical from 08-Mar-2025 00:00:00 to 15-Mar-2025 00:00:00**



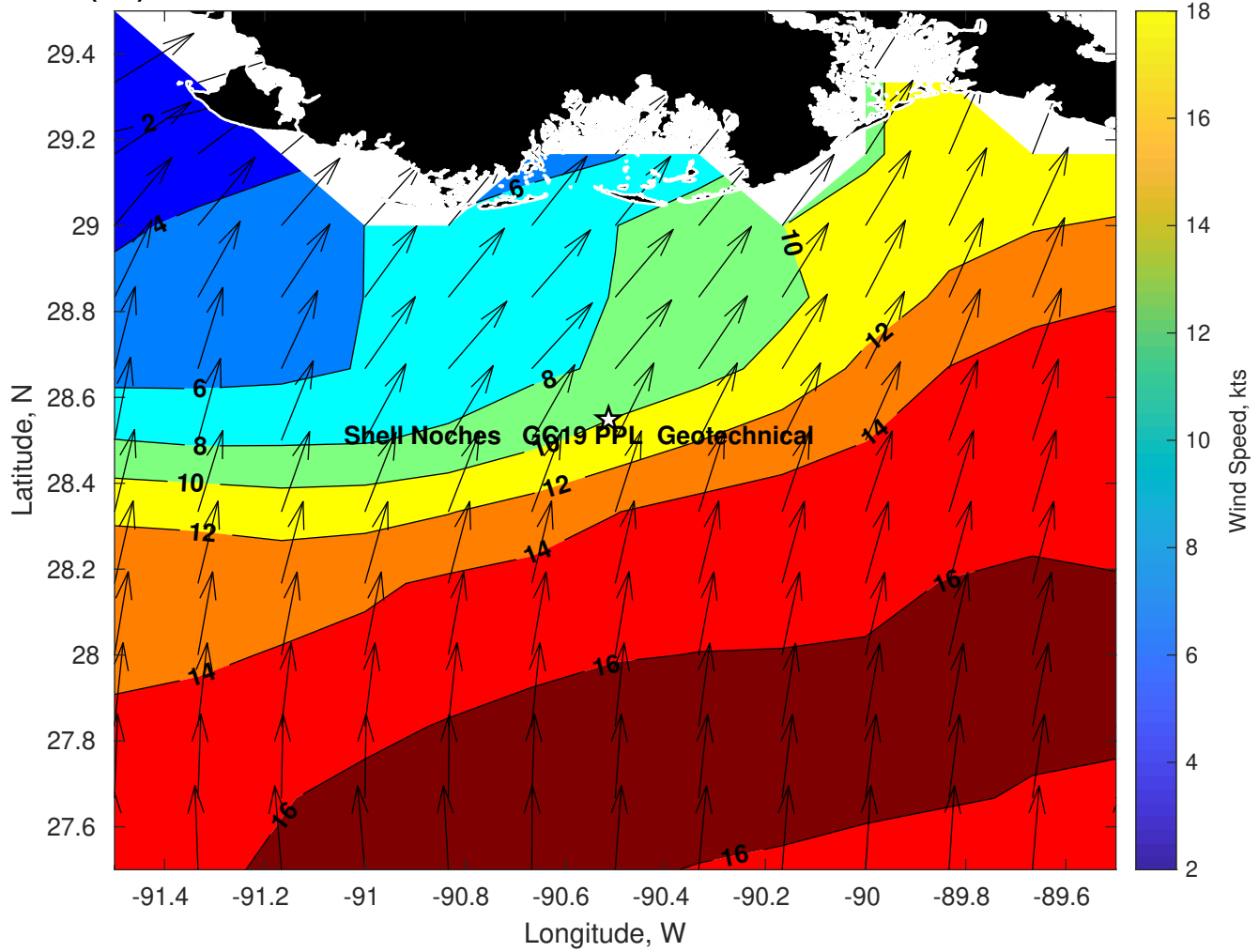
Wave Height (ft) for Shell Noches GC19 PPL Geotechnical at 08-Mar-2025 09:00:00



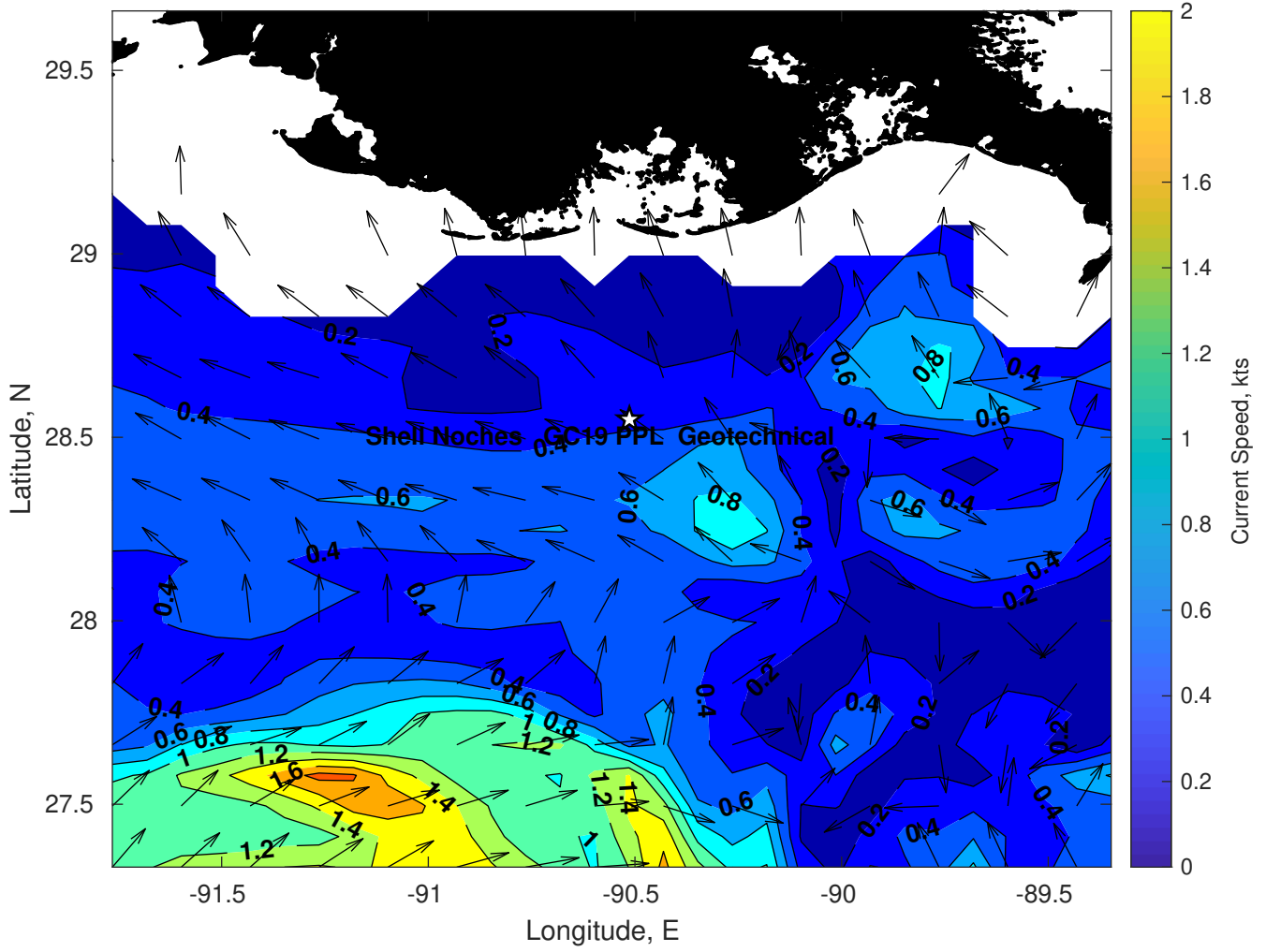
Wave Period (sec) for Shell Noches GC19 PPL Geotechnical at 08-Mar-2025 09:00:00



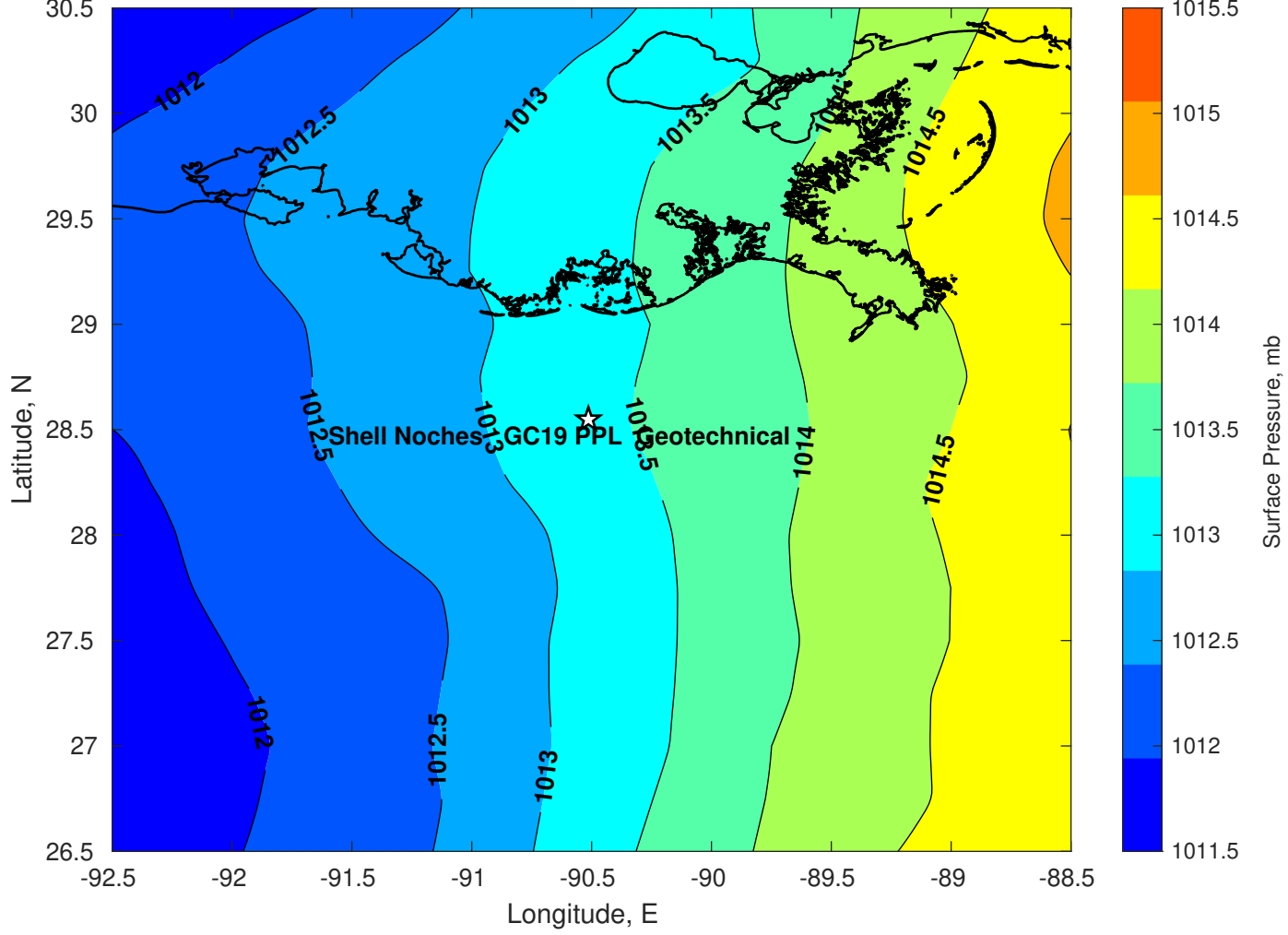
Winds (kts) for Shell Noches GC19 PPL Geotechnical at 08-Mar-2025 09:00:00



Surface Currents for Shell Noches GC19 PPL Geotechnical at 07-Mar-2025 00:00:00

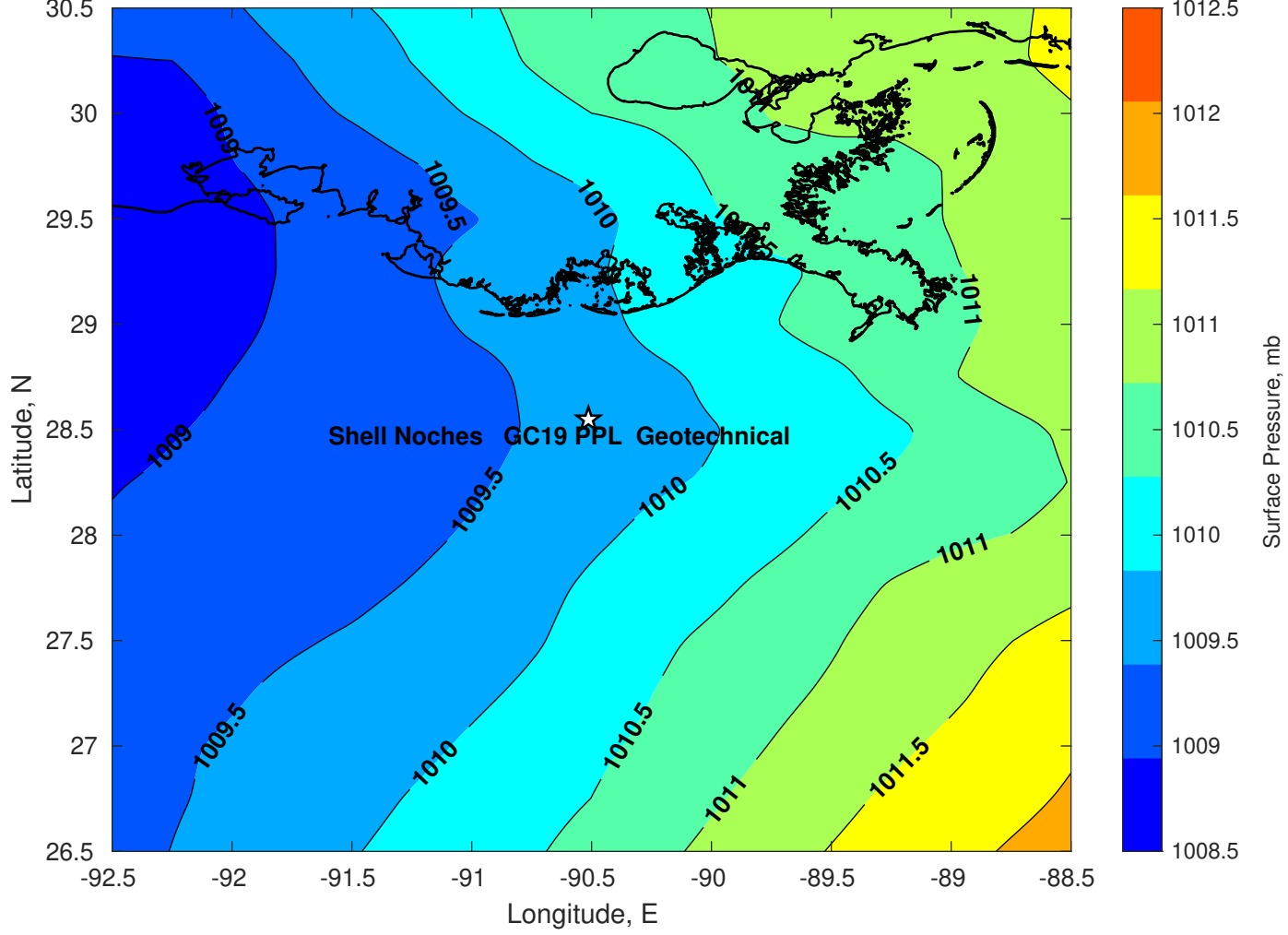


Surface Pressure (mb) for Shell Noches GC19 PPL Geotechnical at 08-Mar-2025 00:00:00

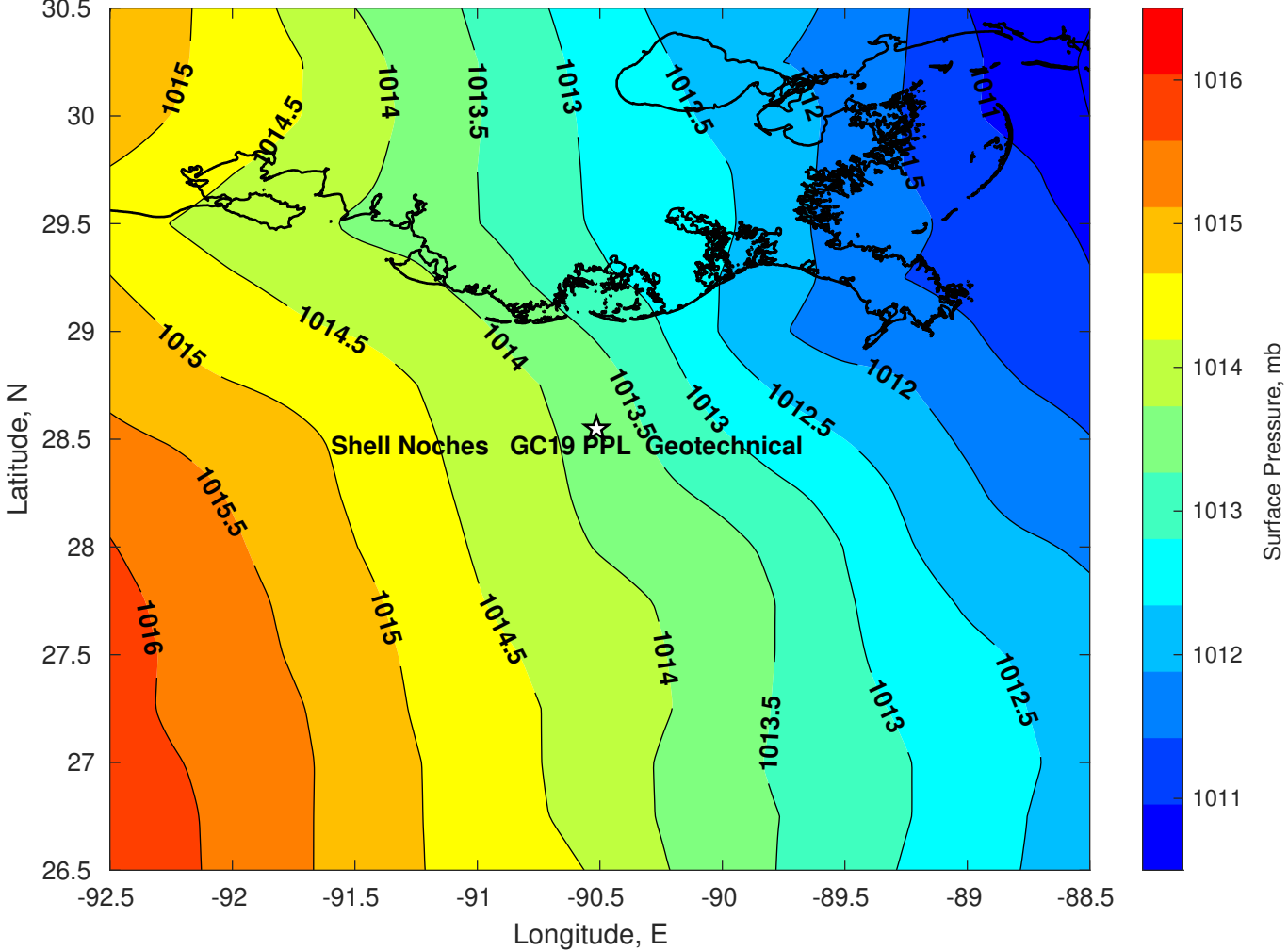




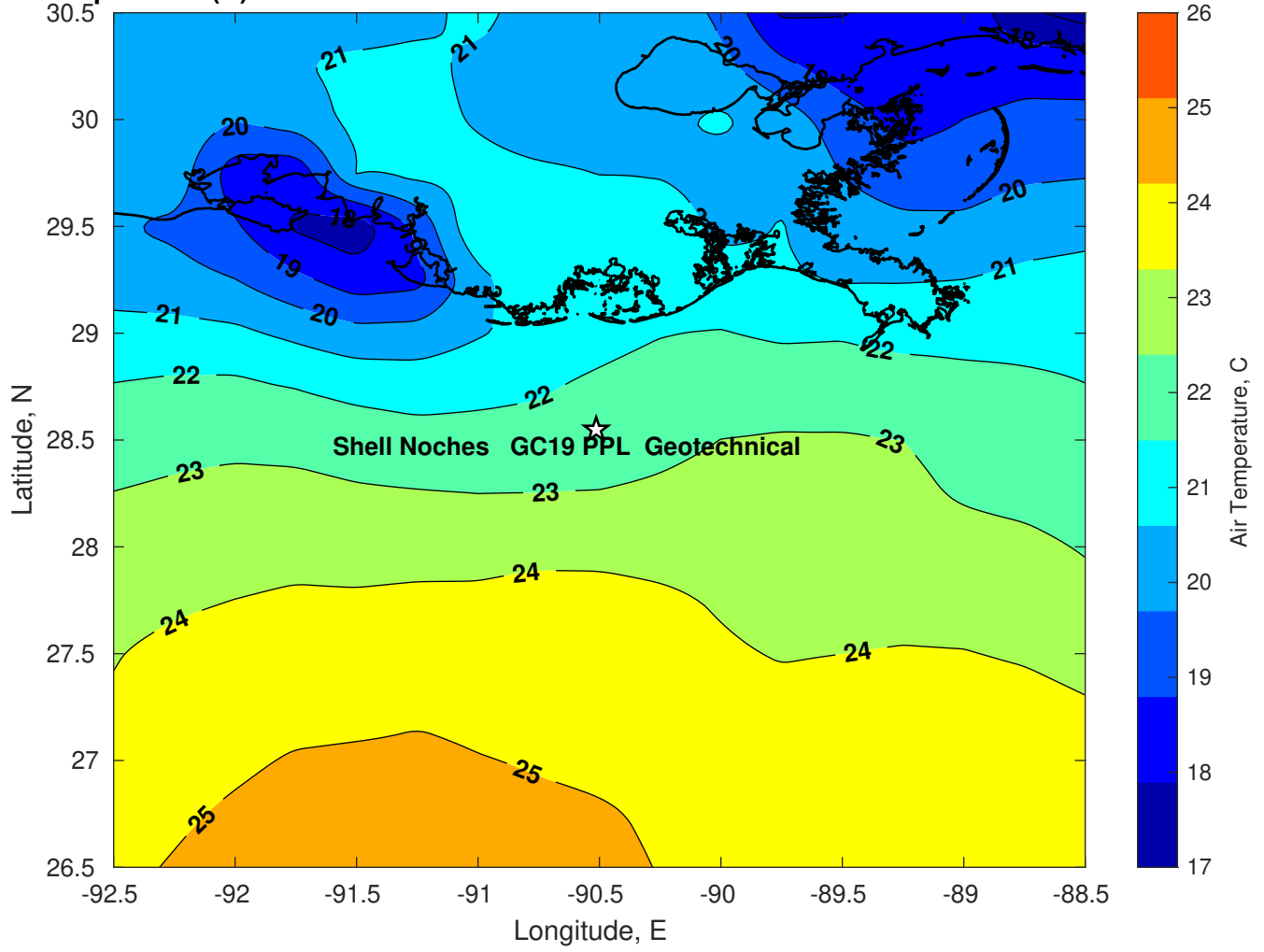
Surface Pressure (mb) for Shell Noches GC19 PPL Geotechnical at 09-Mar-2025 00:00:00



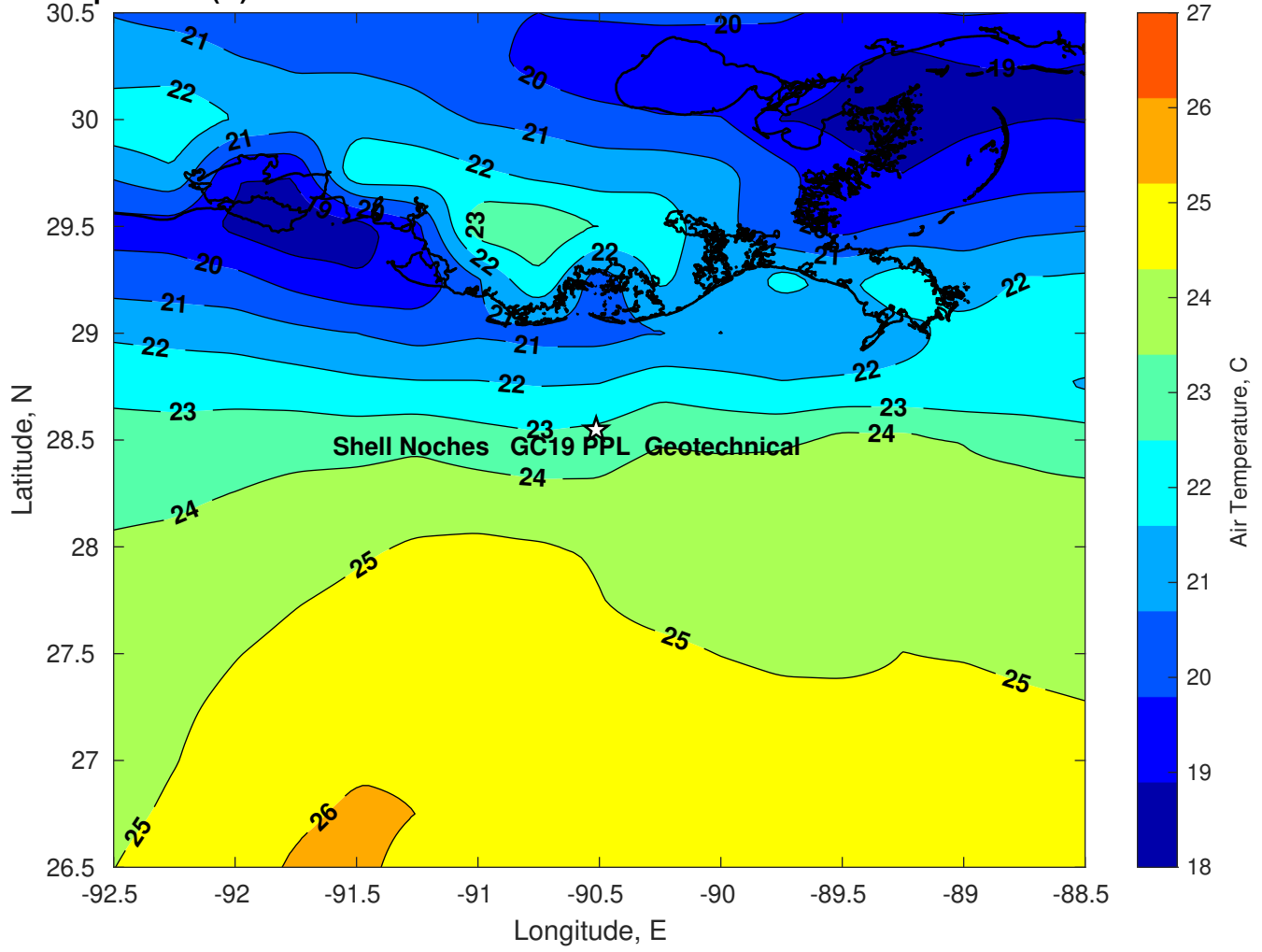
Surface Pressure (mb) for Shell Noches GC19 PPL Geotechnical at 10-Mar-2025 00:00:00



Air Temperature (C) for Shell Noches GC19 PPL Geotechnical at 08-Mar-2025



Air Temperature (C) for Shell Noches GC19 PPL Geotechnical at 08-Mar-2025



Air Temperature (C) for Shell Noches GC19 PPL Geotechnical at 08-Mar-2025

