
Marine Weather Forecast for CSA (ONHYM) PPL EBS - Nigeria
Forecast valid as of 09-Mar-2025 0800 GMT

All times are local.

Today

Winds: NW, 15-20 kts.
Waves: NW, 3-4 feet, 13-14 sec.
No currents available.

Tonight

Winds: NW, 15-20 kts.
Waves: NW, 3-4 feet, 12-13 sec.
No currents available.

Monday

Winds: NW, 10-15 kts.
Waves: NW, 3-4 feet, 11-12 sec.
No currents available.

Monday Night

Winds: NW, 10-15 kts.
Waves: NW, 3-4 feet, 11-12 sec.
No currents available.

Tuesday

Winds: NW, 10-15 kts.
Waves: NW, 3-4 feet, 10-11 sec.
No currents available.

Tuesday Night

Winds: NW, 15-20 kts.
Waves: NW, 3-4 feet, 9-10 sec.
No currents available.

Wednesday

Winds: NW, 15-20 kts.
Waves: NW, 4-5 feet, 12-13 sec.
No currents available.

Wednesday Night

Winds: NW, 15-20 kts.
Waves: NW, 4-5 feet, 11-12 sec.
No currents available.

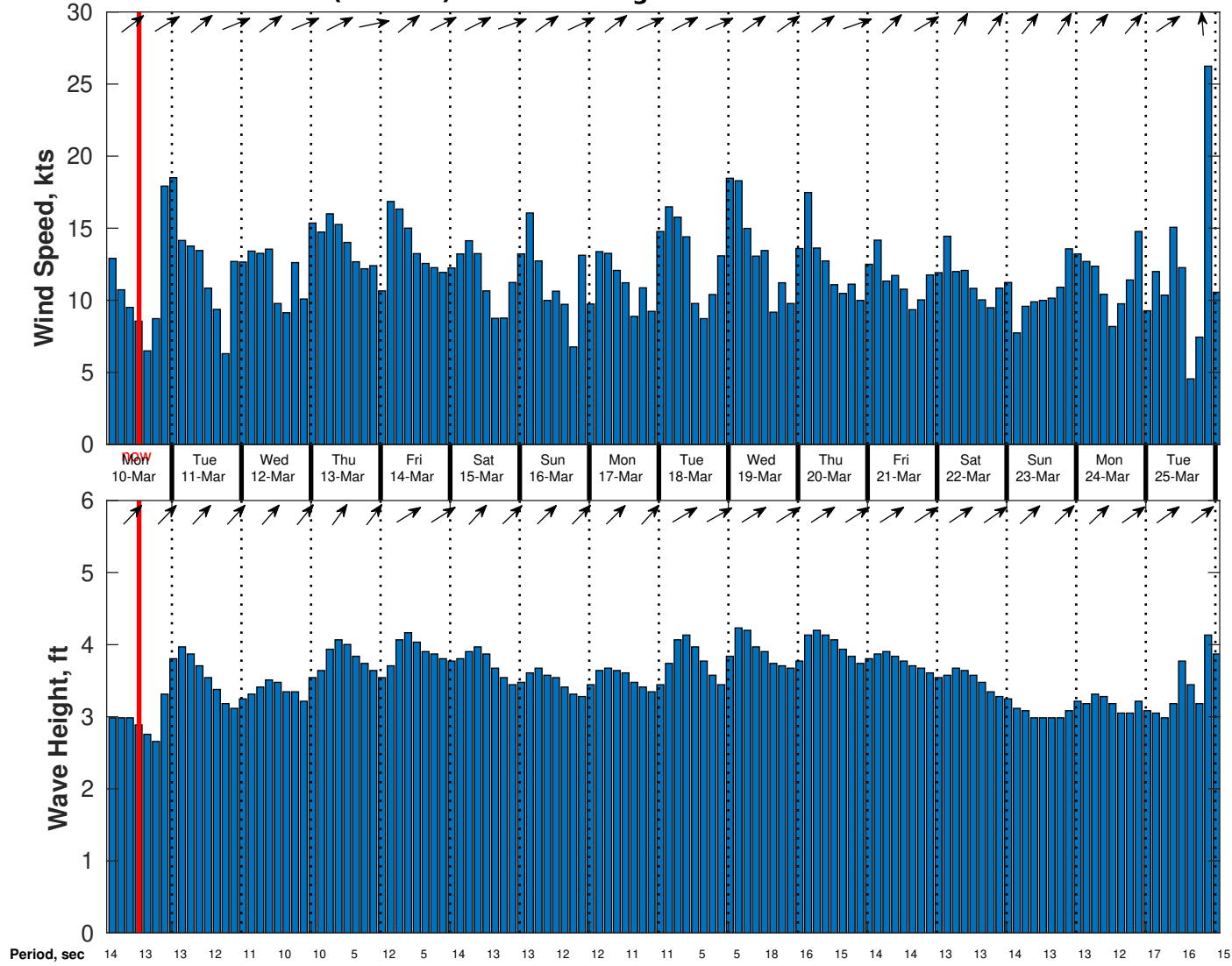
Thursday

Winds: NW, 15-20 kts.
Waves: NW, 4-5 feet, 14-15 sec.
No currents available.

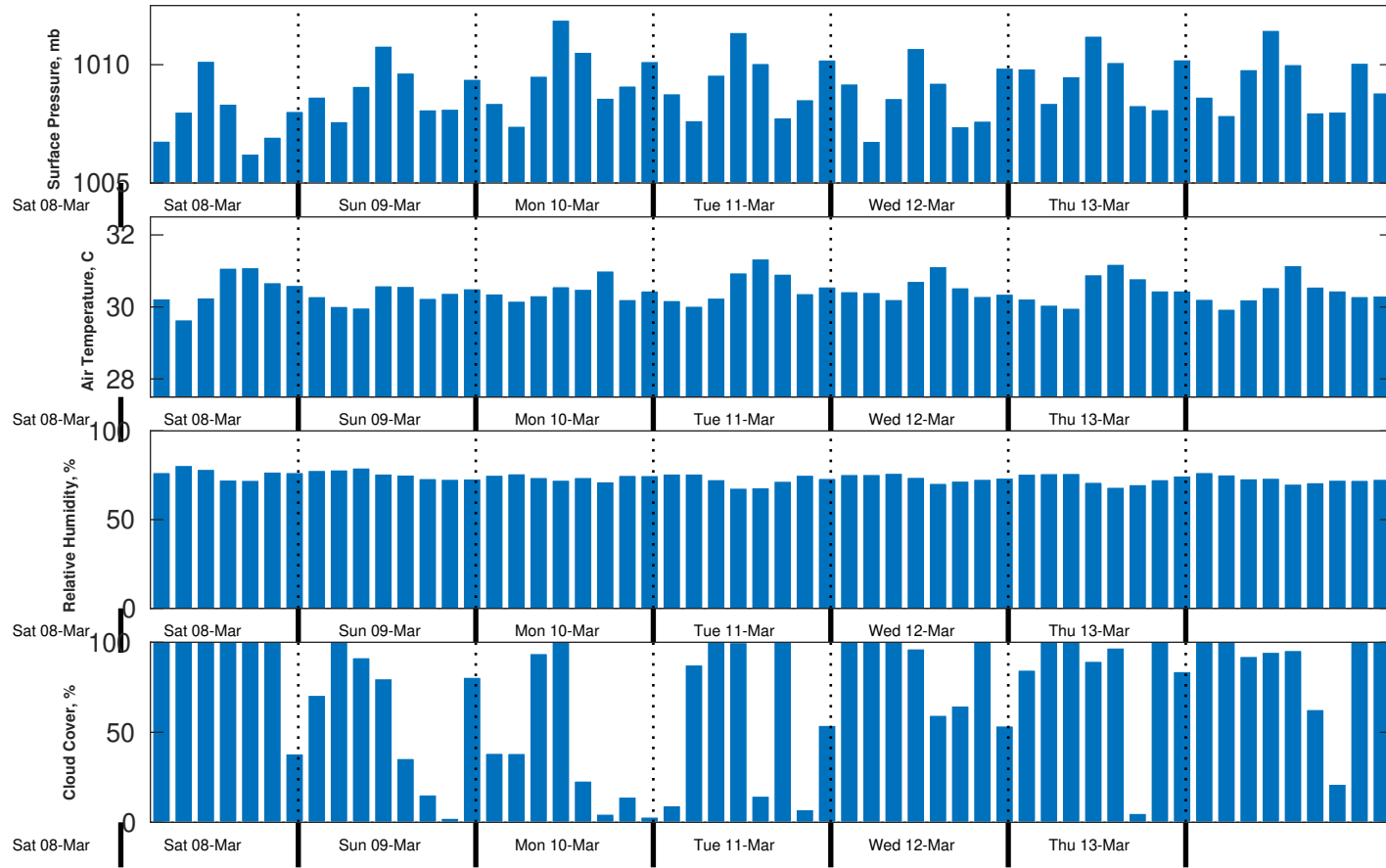
Thursday Night

Winds: NW, 10-15 kts.
Waves: NW, 3-4 feet, 14-15 sec.
No currents available.

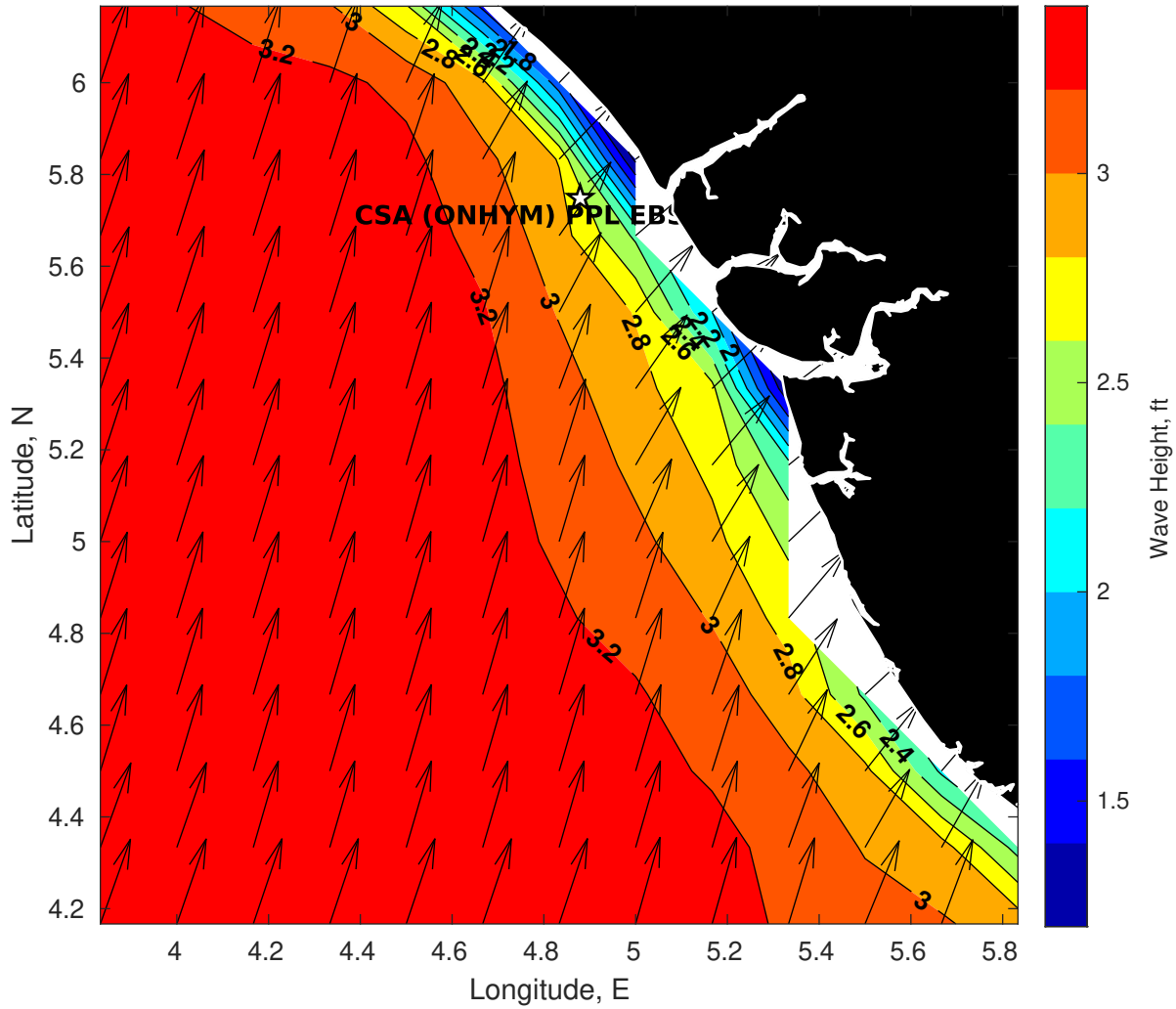
Wind & Wave Forecast for CSA (ONHYM) PPL EBS - Nigeria from 09-Mar-2025 02:00:00 to 25-Mar-2025 02:00:00



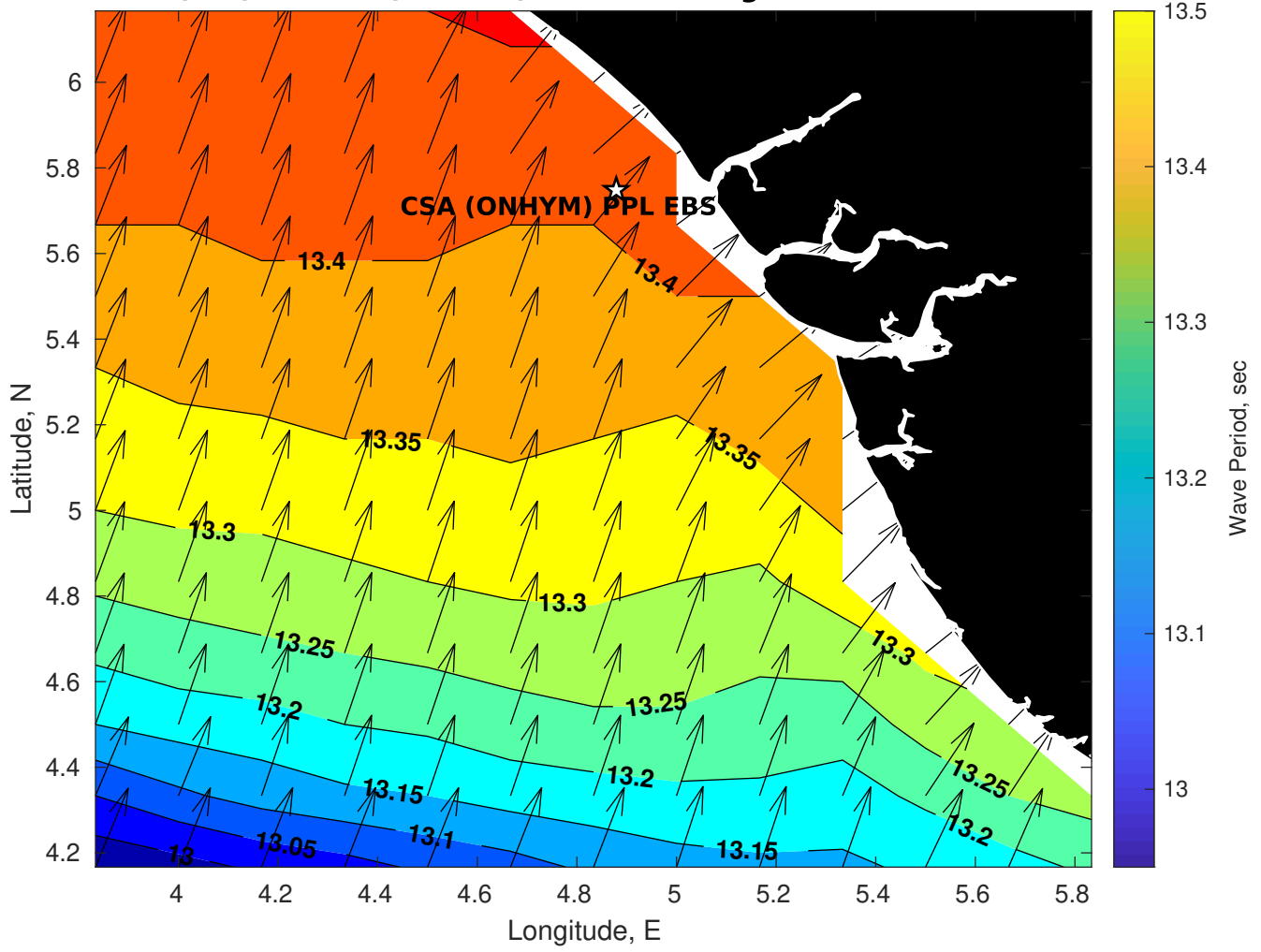
Met Forecast for CSA (ONHYM) PPL EBS - Nigeria from 09-Mar-2025 00:00:00 to 16-Mar-2025 00:00:00



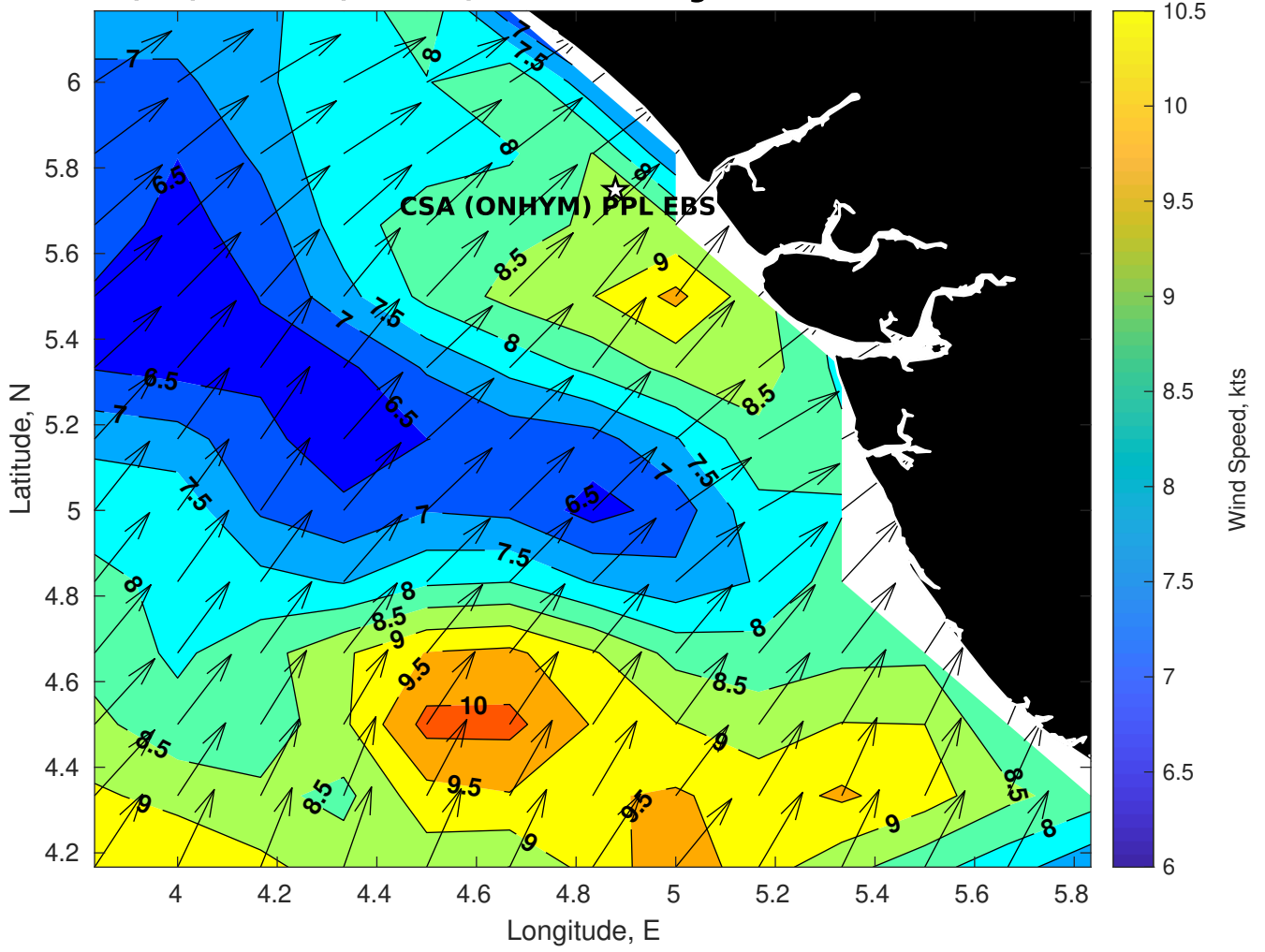
Wave Height (ft) for CSA (ONHYM) PPL EBS - Nigeria at 09-Mar-2025 09:00:00



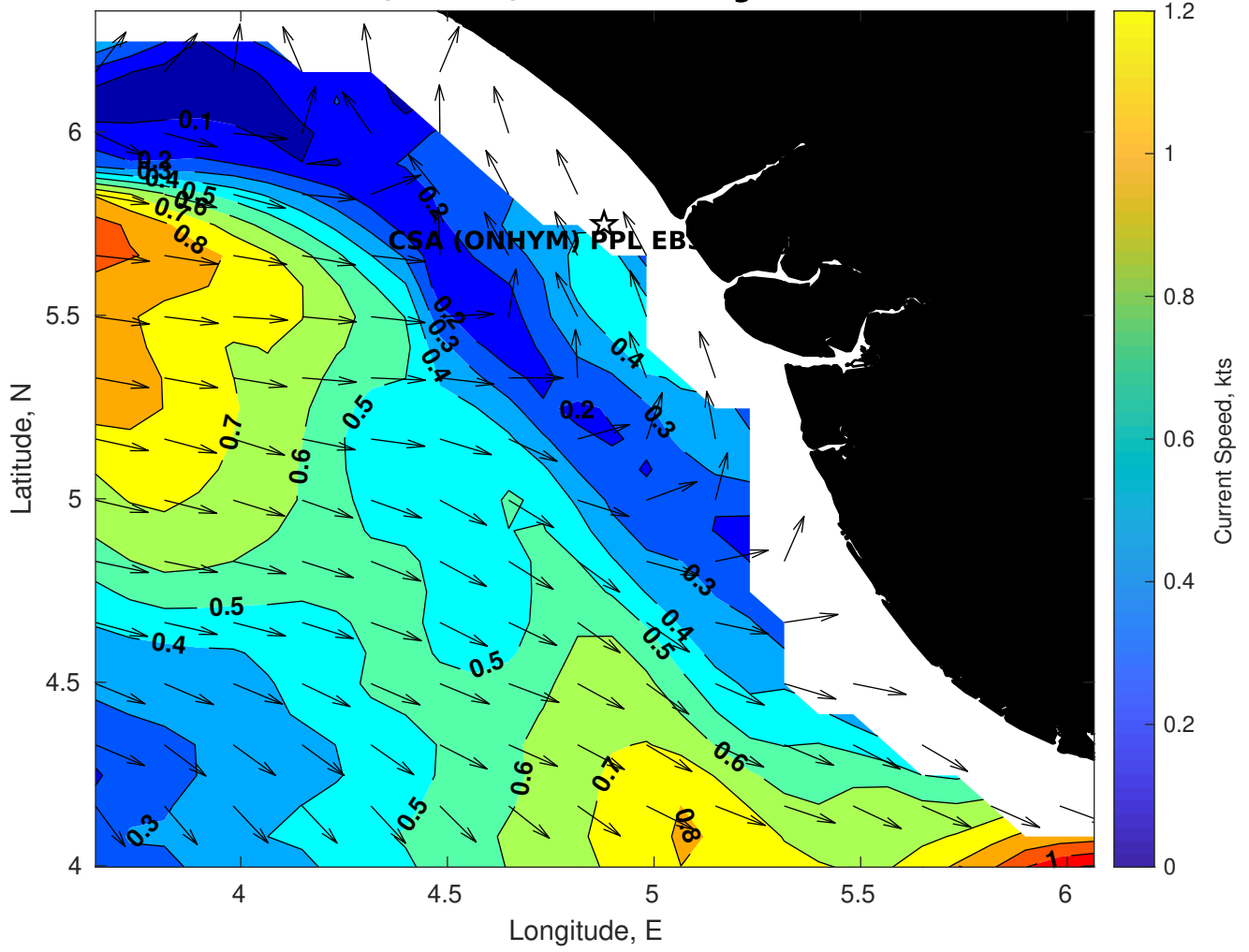
Wave Period (sec) for CSA (ONHYM) PPL EBS - Nigeria at 09-Mar-2025 09:00:00



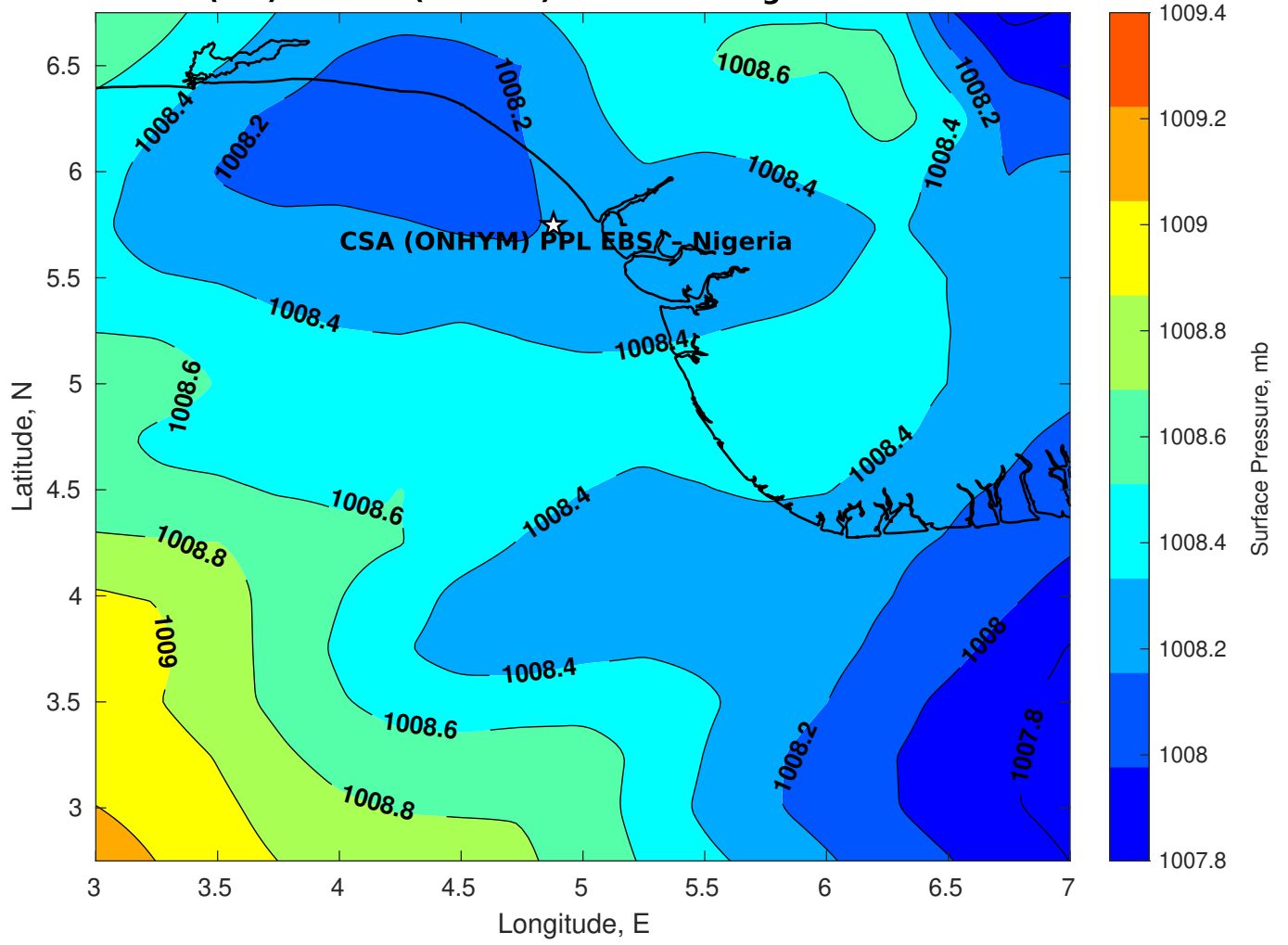
Winds (kts) for CSA (ONHYM) PPL EBS - Nigeria at 09-Mar-2025 09:00:00



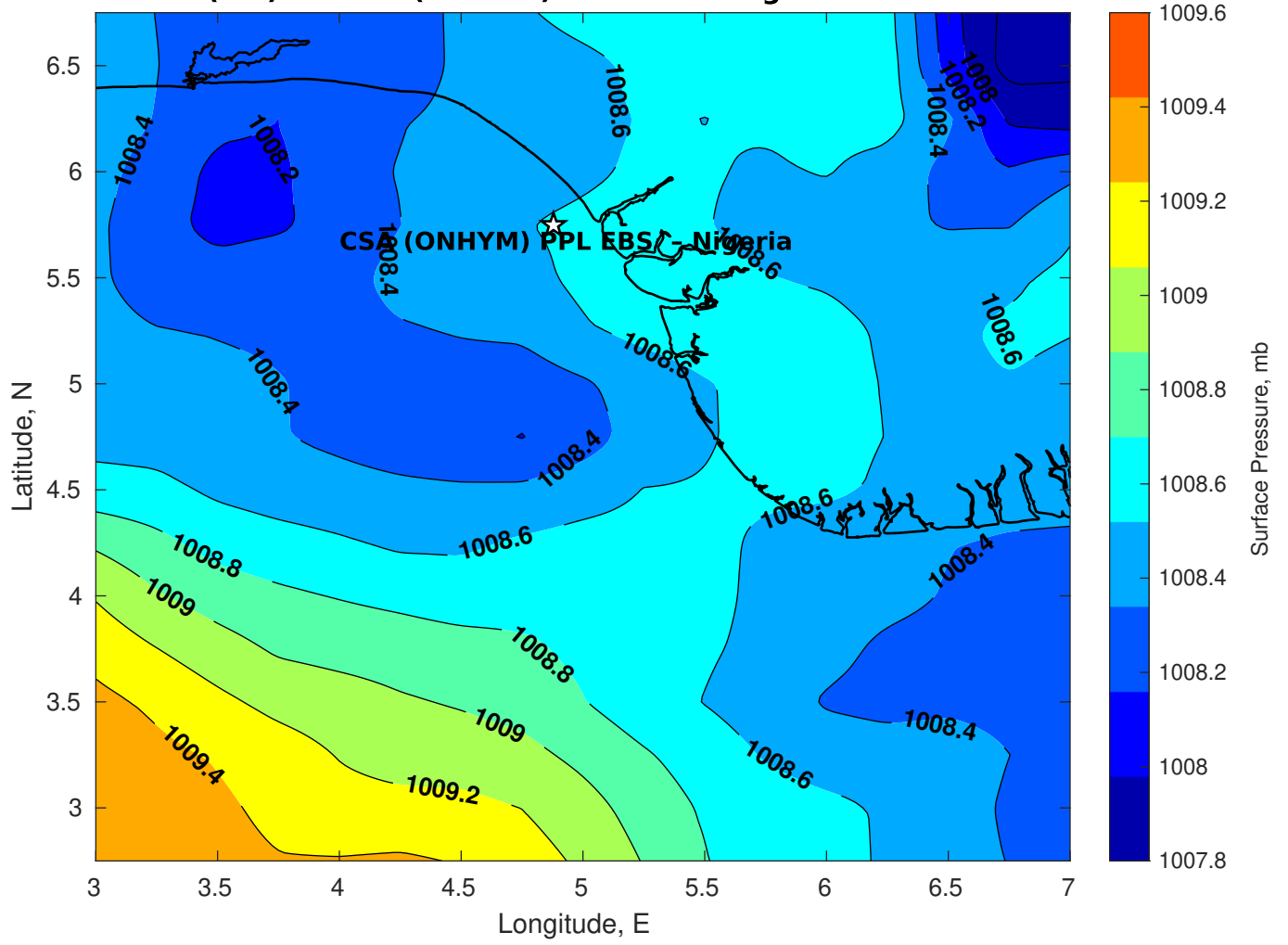
Surface Currents for CSA (ONHYM) PPL EBS - Nigeria at 08-Mar-2025 00:00:00



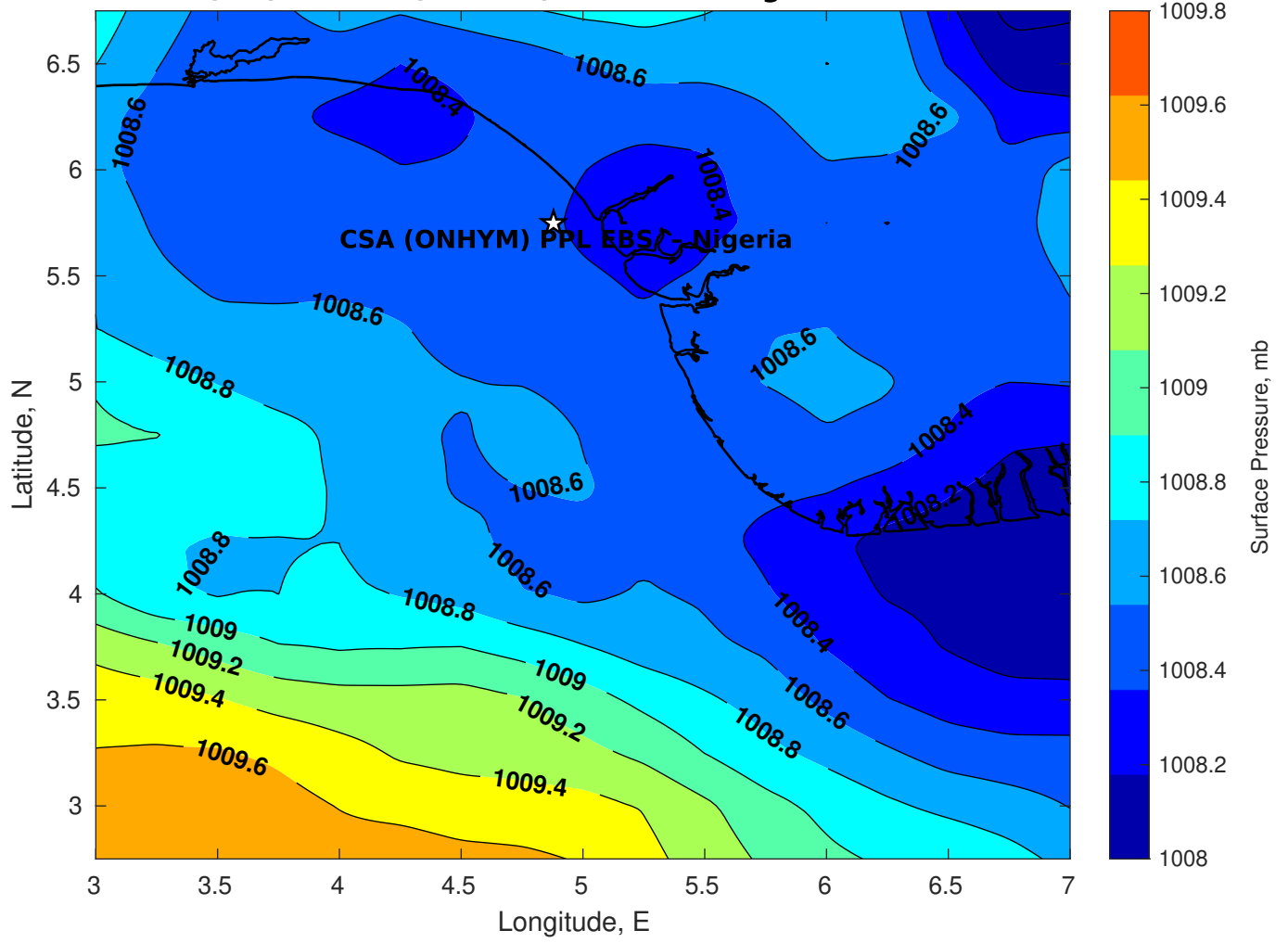
Surface Pressure (mb) for CSA (ONHYM) PPL EBS - Nigeria at 09-Mar-2025 00:00:00



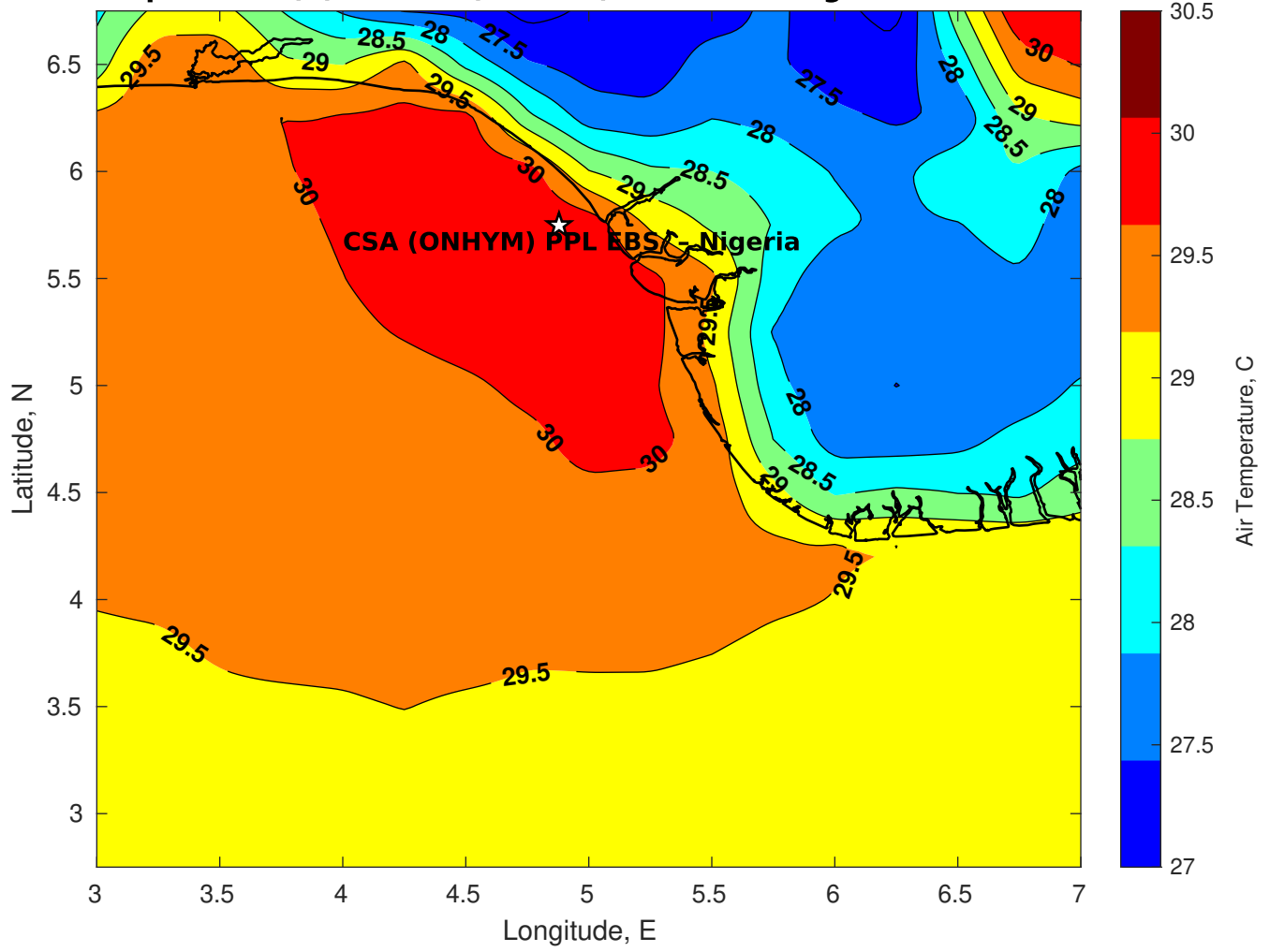
Surface Pressure (mb) for CSA (ONHYM) PPL EBS - Nigeria at 10-Mar-2025 00:00:00



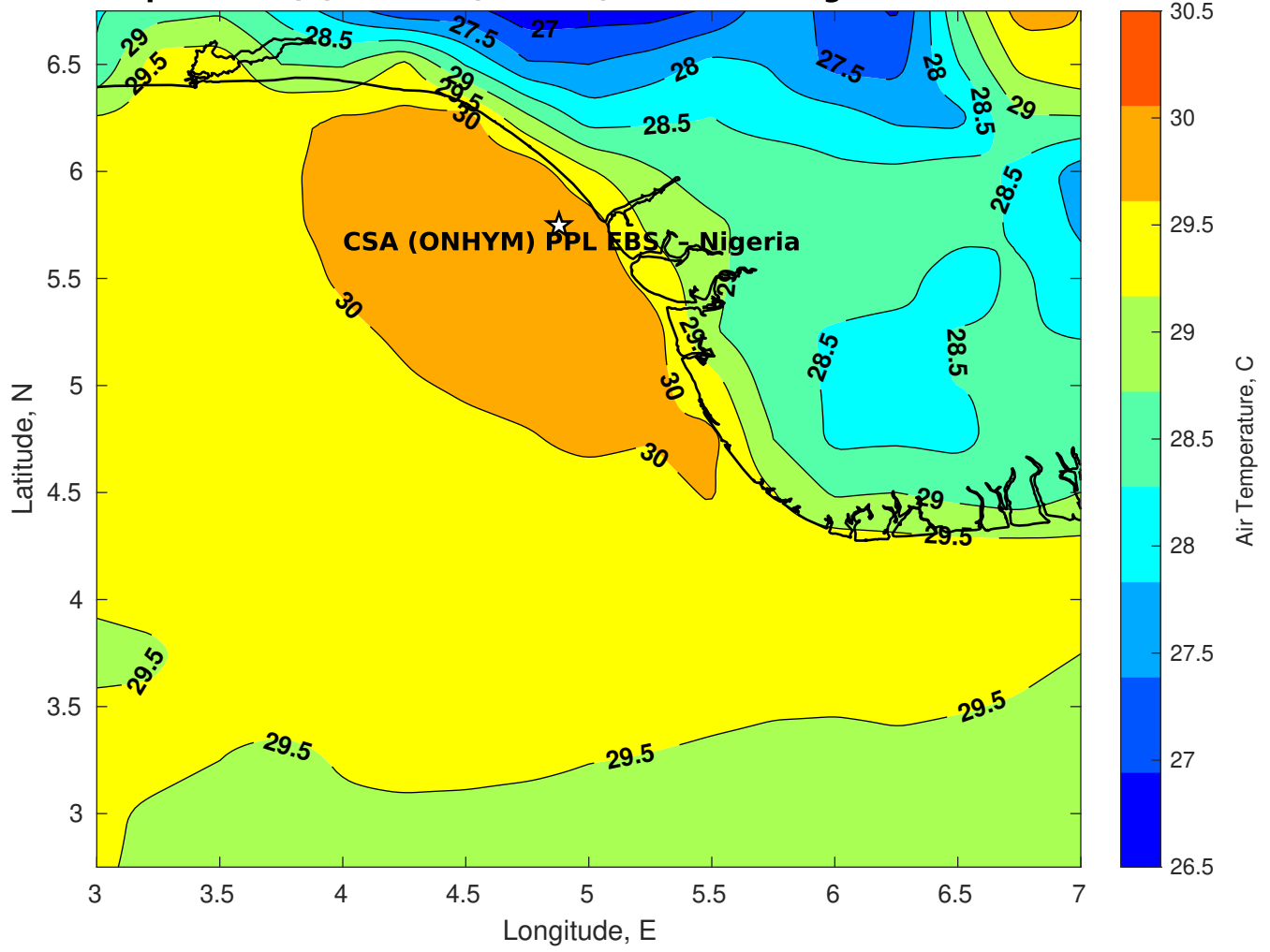
Surface Pressure (mb) for CSA (ONHYM) PPL EBS - Nigeria at 11-Mar-2025 00:00:00



Air Temperature (C) for CSA (ONHYM) PPL EBS - Nigeria at 09-Mar-2025



Air Temperature (C) for CSA (ONHYM) PPL EBS - Nigeria at 09-Mar-2025



Air Temperature (C) for CSA (ONHYM) PPL EBS - Nigeria at 09-Mar-2025

