

\*\*\*\*\*

Marine Weather Forecast for CSA (ONHYM) PPL EBS – Sierra Leone  
Forecast valid as of 09-Mar-2025 0800 GMT

\*\*\*\*\*

All times are local.

Today

Winds: NW, 5-10 kts.  
Waves: N, 1-2 feet, 12-13 sec.  
No currents available.

Tonight

Winds: NW, 5-10 kts.  
Waves: N, 1-2 feet, 11-12 sec.  
No currents available.

Monday

Winds: NW, 10-15 kts.  
Waves: N, 1-2 feet, 11-12 sec.  
No currents available.

Monday Night

Winds: NW, 10-15 kts.  
Waves: N, 1-2 feet, 10-11 sec.  
No currents available.

Tuesday

Winds: NW, 10-15 kts.  
Waves: N, 1-2 feet, 10-11 sec.  
No currents available.

Tuesday Night

Winds: W, 10-15 kts.  
Waves: N, 2-3 feet, 9-10 sec.  
No currents available.

Wednesday

Winds: NW, 15-20 kts.  
Waves: N, 2-3 feet, 9-10 sec.  
No currents available.

Wednesday Night

Winds: W, 15-20 kts.  
Waves: N, 2-3 feet, 15-16 sec.  
No currents available.

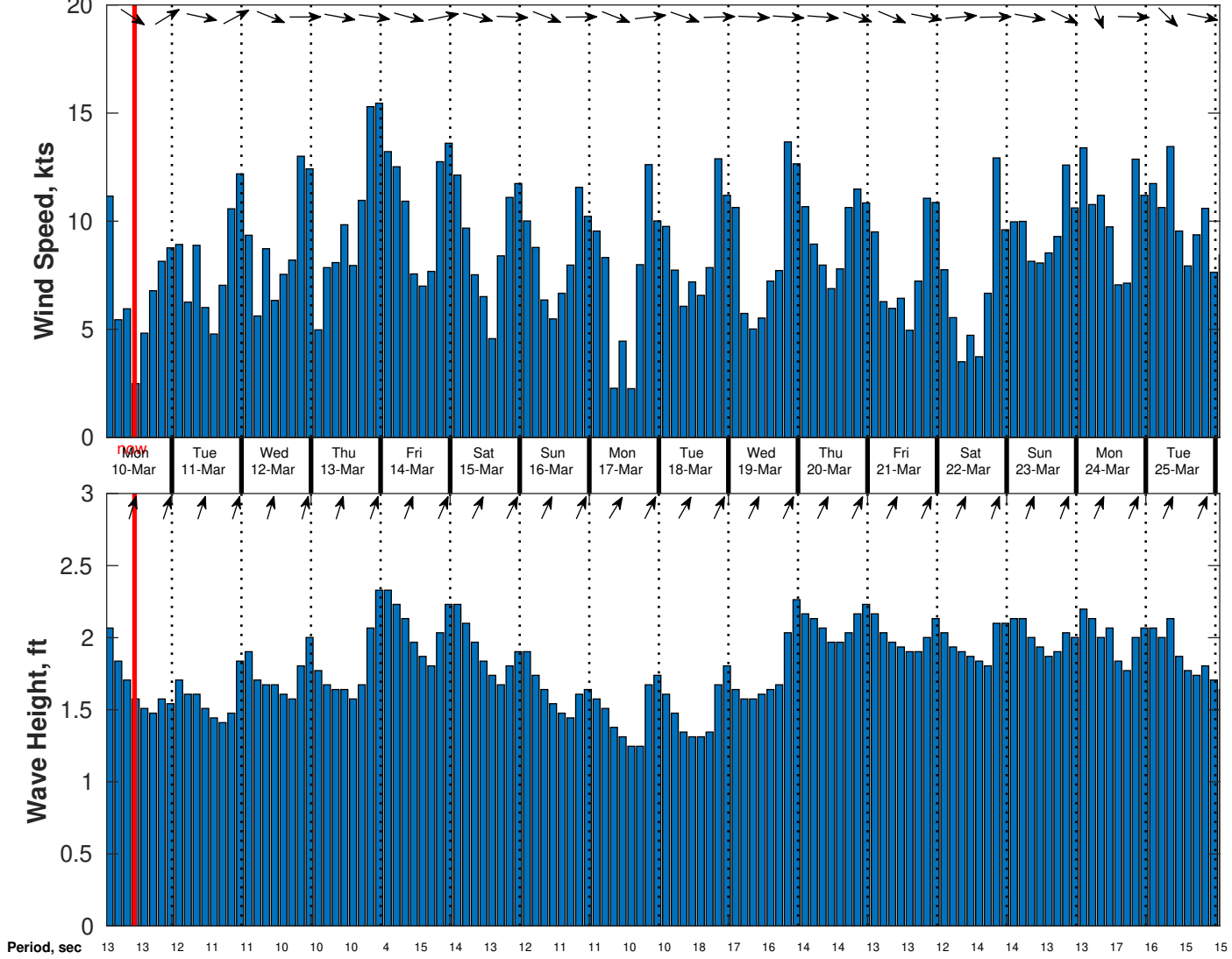
Thursday

Winds: NW, 10-15 kts.  
Waves: N, 2-3 feet, 15-16 sec.  
No currents available.

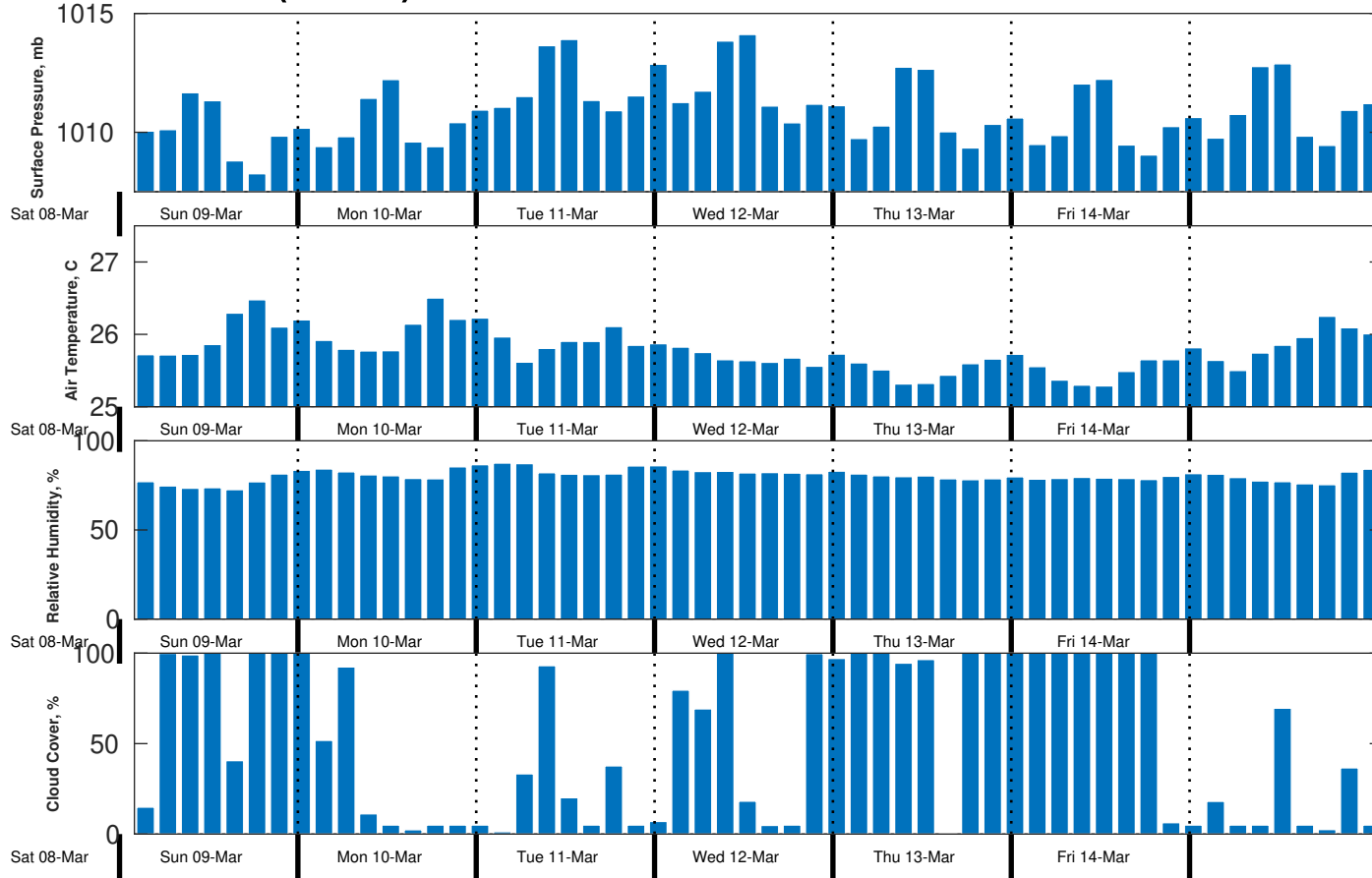
Thursday Night

Winds: W, 10-15 kts.  
Waves: N, 2-3 feet, 13-14 sec.  
No currents available.

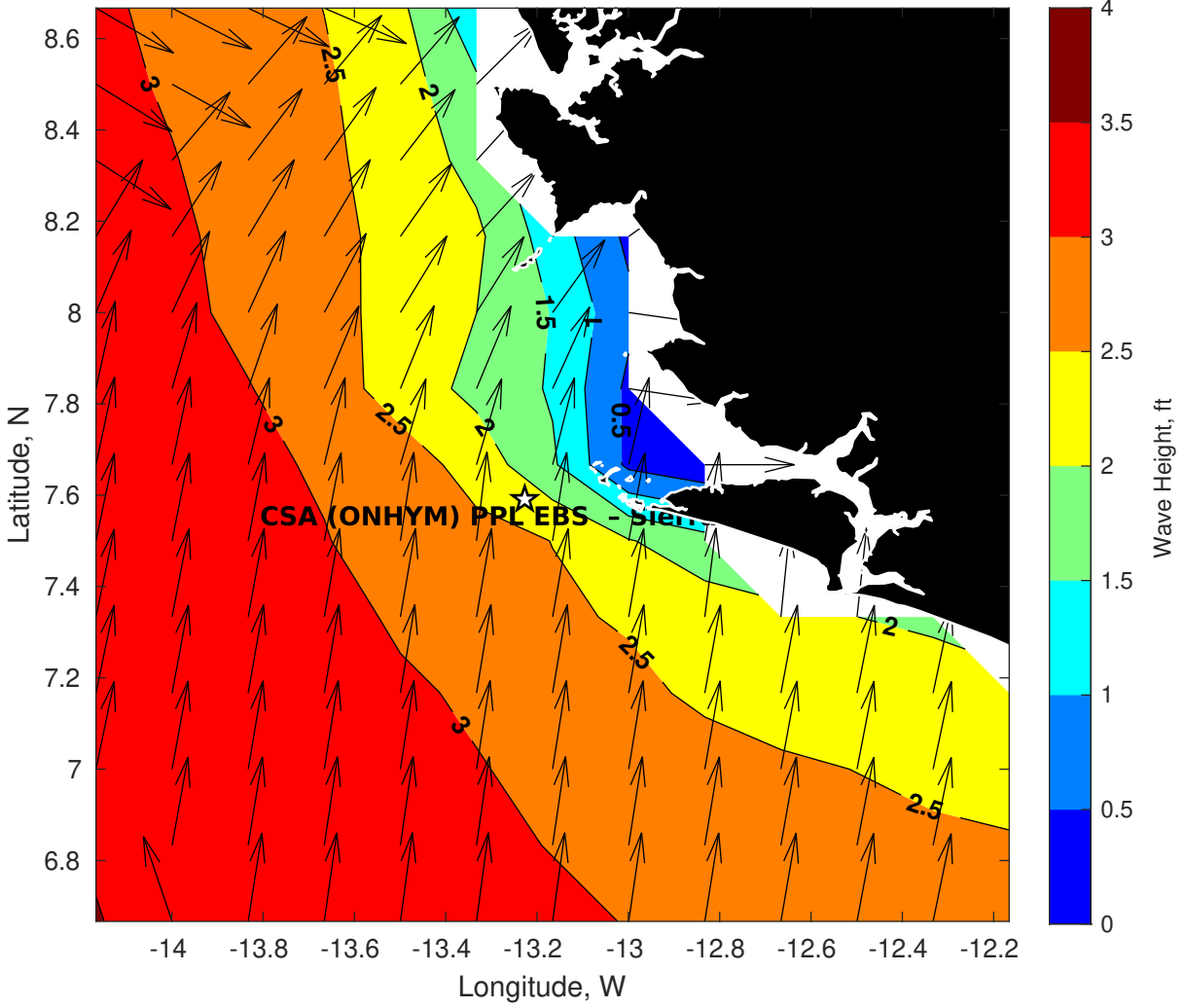
**Wind & Wave Forecast for CSA (ONHYM) PPL EBS - Sierra Leone from 09-Mar-2025 01:00:00 to 25-Mar-2025 01:00:00**



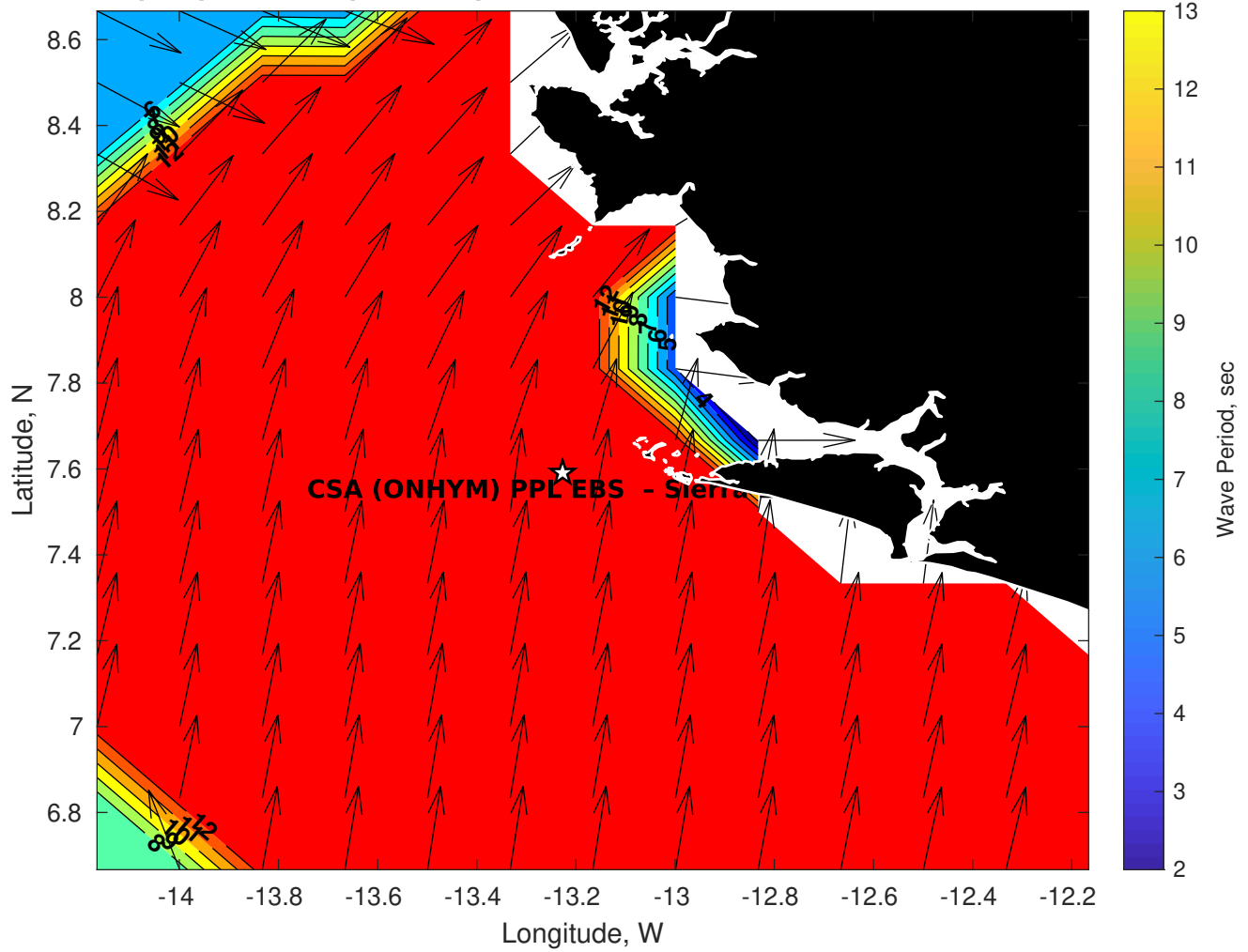
**Met Forecast for CSA (ONHYM) PPL EBS - Sierra Leone from 09-Mar-2025 00:00:00 to 16-Mar-2025 00:00:00**



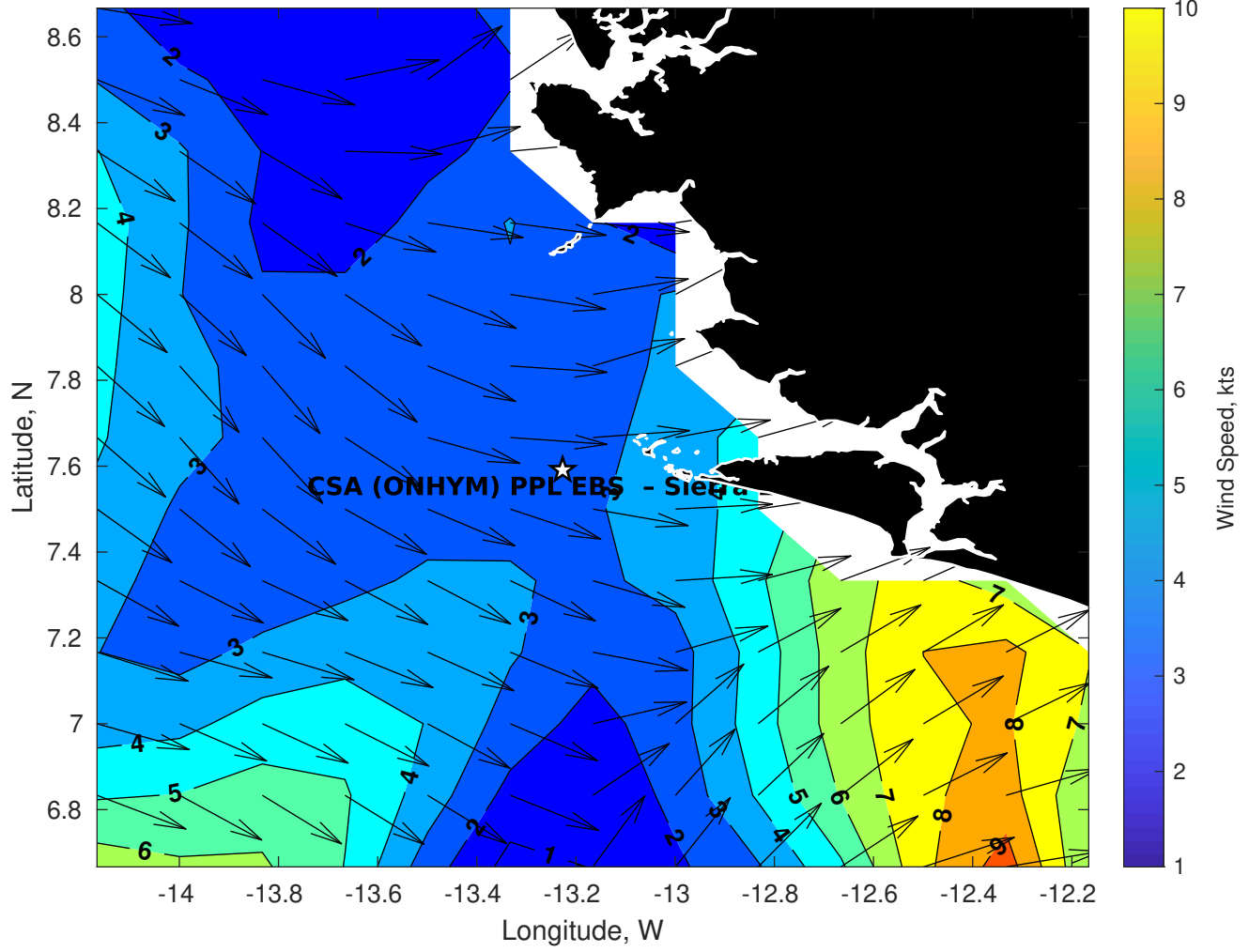
**Wave Height (ft) for CSA (ONHYM) PPL EBS - Sierra Leone at 09-Mar-2025 09:00:00**



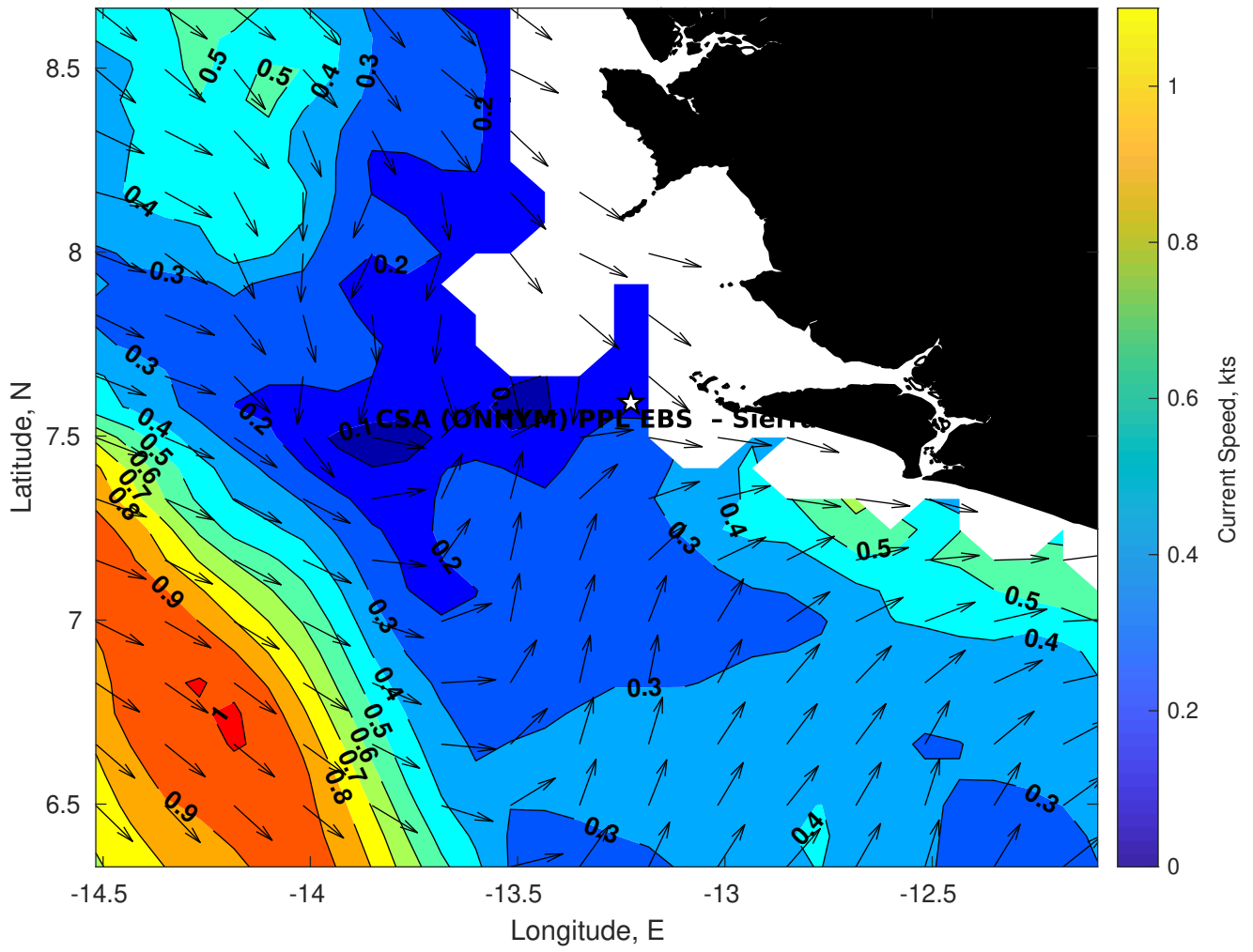
**Wave Period (sec) for CSA (ONHYM) PPL EBS - Sierra Leone at 09-Mar-2025 09:00:00**



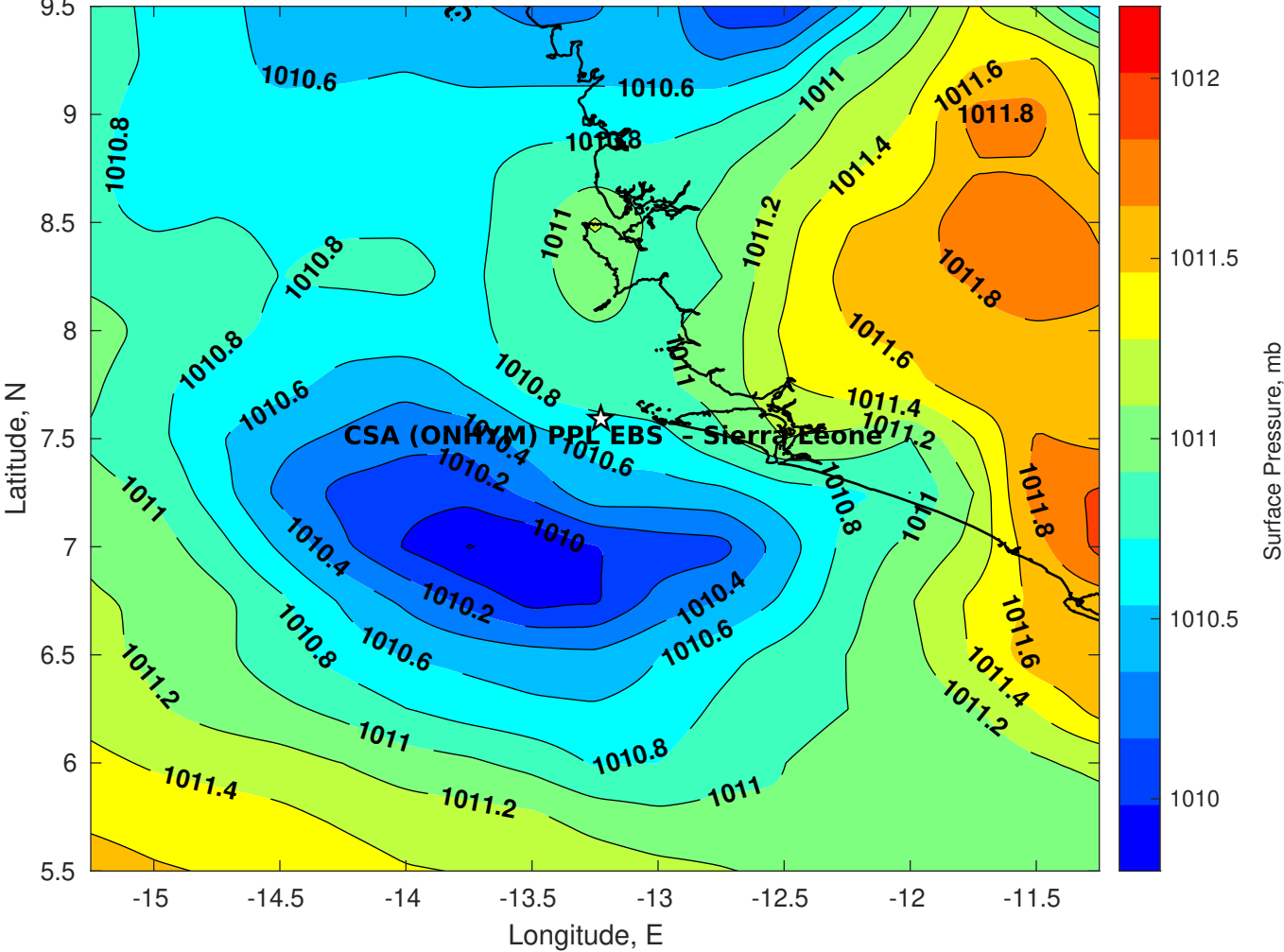
**Winds (kts) for CSA (ONHYM) PPL EBS - Sierra Leone at 09-Mar-2025 09:00:00**



**Surface Currents for CSA (ONHYM) PPL EBS - Sierra Leone at 08-Mar-2025 00:00:00**

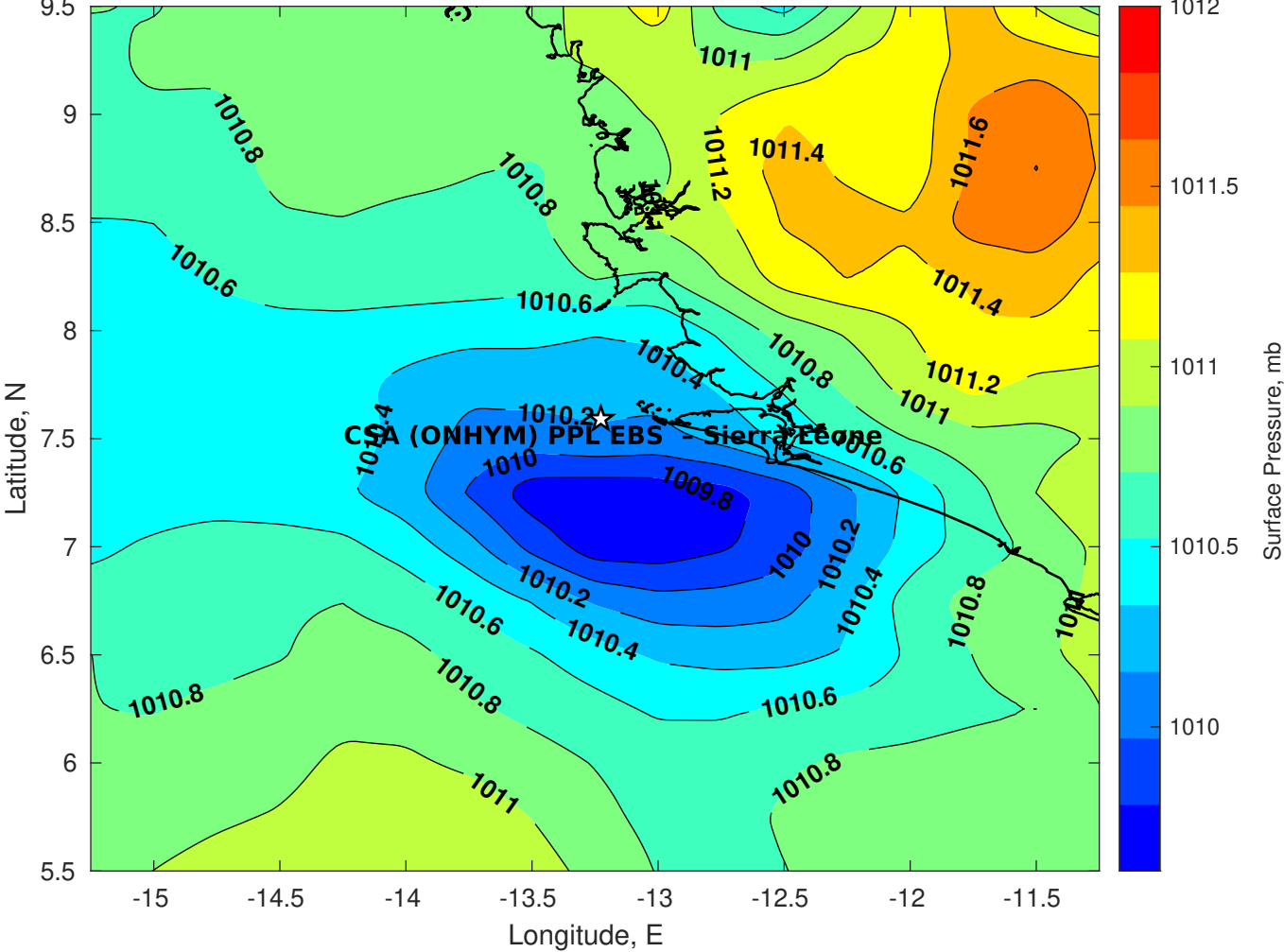


Surface Pressure (mb) for CSA (ONHYM) PPL EBS - Sierra Leone at 09-Mar-2025 00:00:00

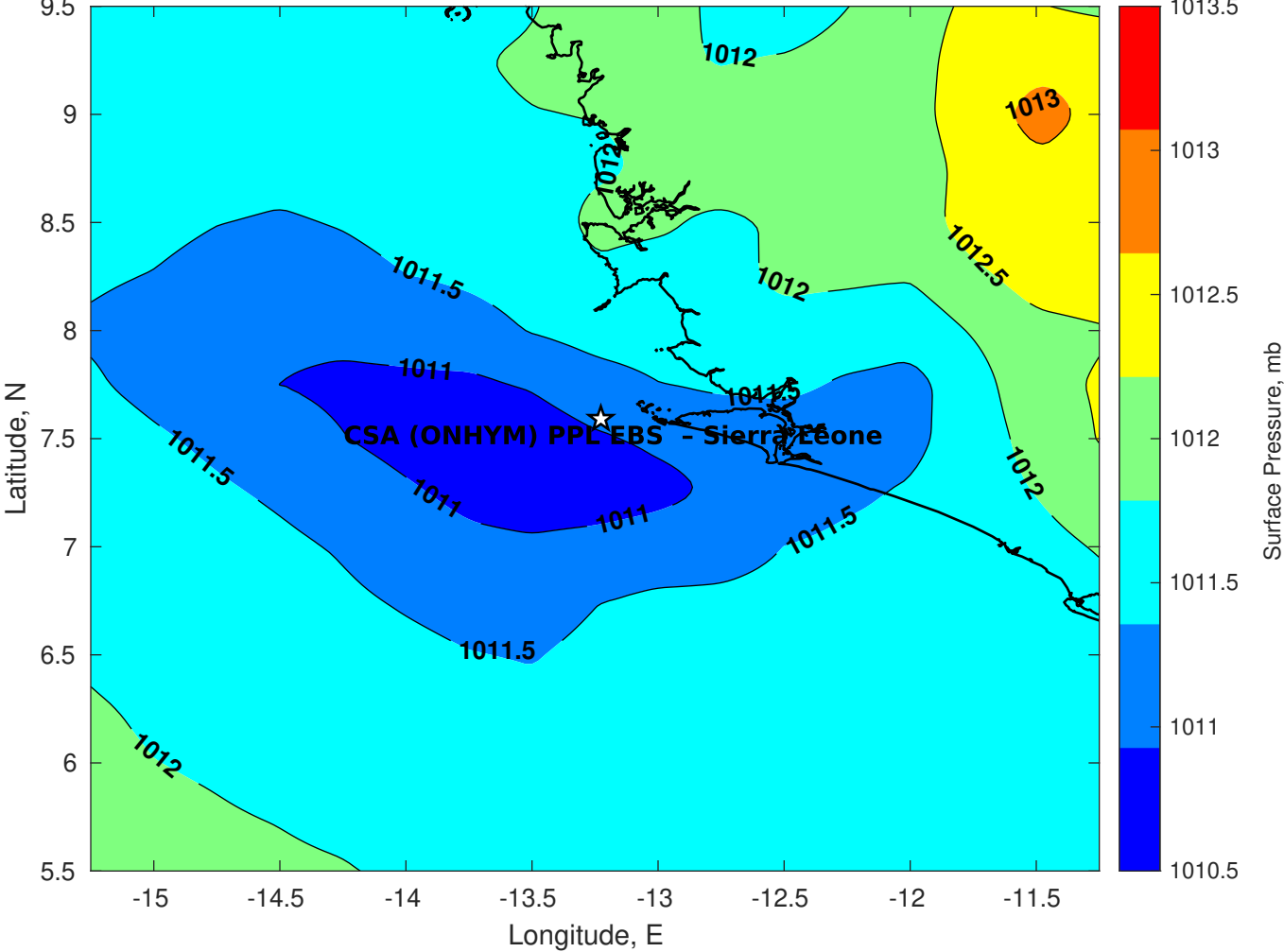




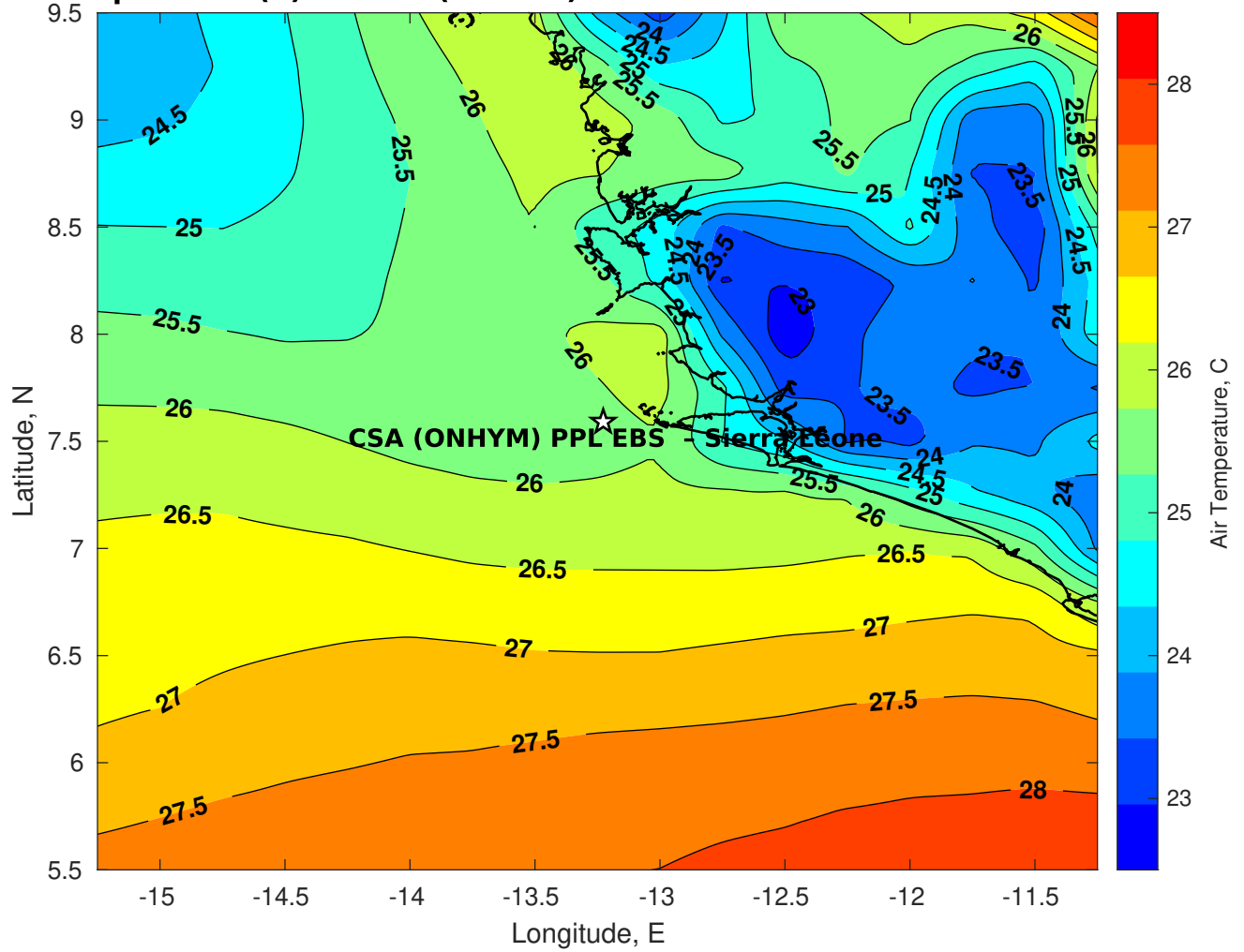
Surface Pressure (mb) for CSA (ONHYM) PPL EBS - Sierra Leone at 10-Mar-2025 00:00:00



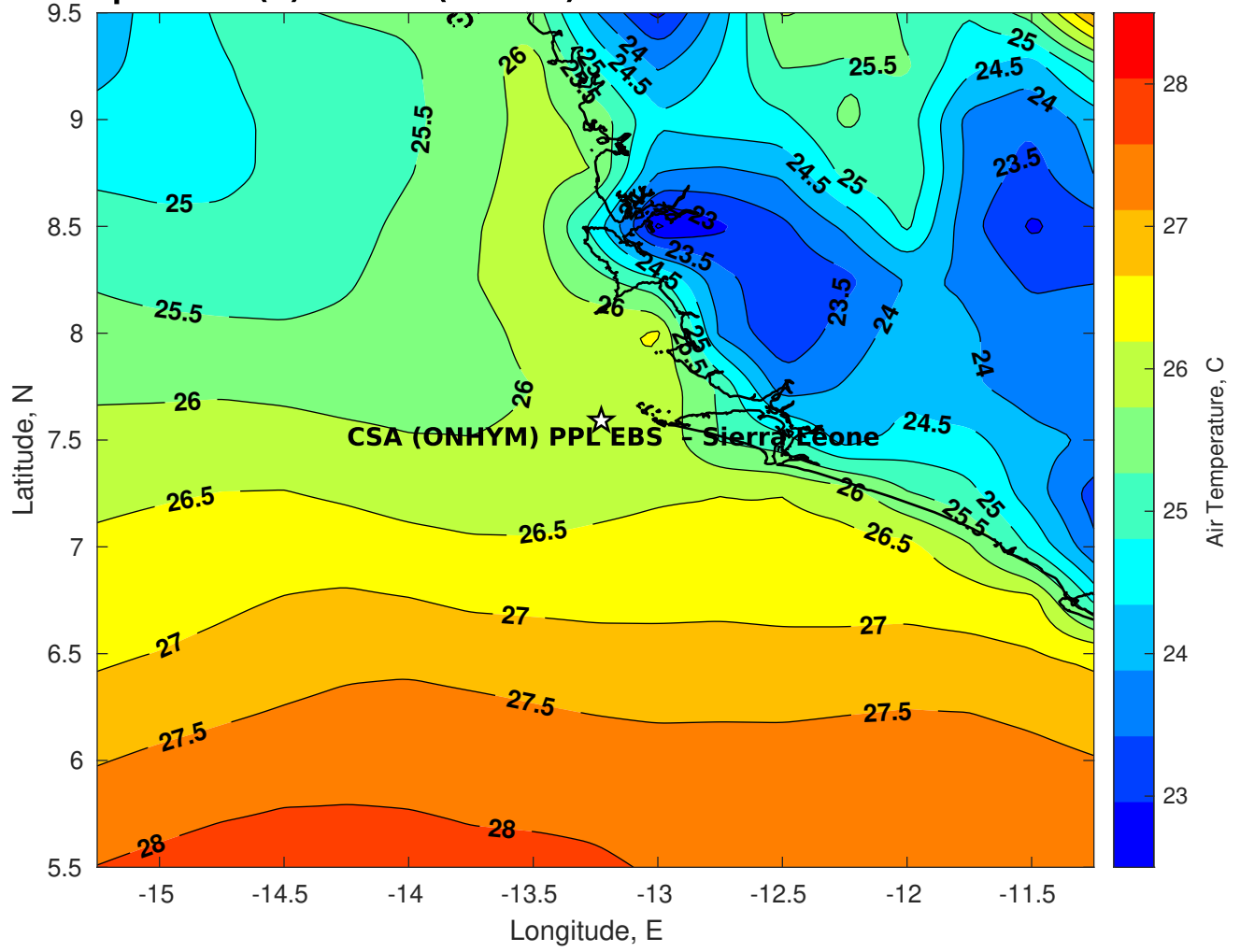
Surface Pressure (mb) for CSA (ONHYM) PPL EBS - Sierra Leone at 11-Mar-2025 00:00:00



### Air Temperature (C) for CSA (ONHYM) PPL EBS - Sierra Leone at 09-Mar-2025



**Air Temperature (C) for CSA (ONHYM) PPL EBS - Sierra Leone at 09-Mar-2025**



**Air Temperature (C) for CSA (ONHYM) PPL EBS - Sierra Leone at 09-Mar-2025**

