
Marine Weather Forecast for Shell Noches GC19 PPL Geotechnical
Forecast valid as of 09-Mar-2025 0800 GMT

All times are local.

Today

Winds: NW, 10-15 kts.
Waves: N, 3-4 feet, 6-7 sec.
No currents available.

Tonight

Winds: NW, 20-25 kts.
Waves: W, 6-7 feet, 6-7 sec.
No currents available.

Sunday

Winds: N, 20-25 kts.
Waves: N, 6-7 feet, 6-7 sec.
No currents available.

Monday Night

Winds: NW, 10-15 kts.
Waves: N, 3-4 feet, 5-6 sec.
No currents available.

Monday

Winds: NW, 20-25 kts.
Waves: NW, 6-7 feet, 6-7 sec.
No currents available.

Tuesday Night

Winds: N, 5-10 kts.
Waves: NE, 1-2 feet, 5-6 sec.
No currents available.

Tuesday

Winds: NW, 5-10 kts.
Waves: NE, 1-2 feet, 5-6 sec.
No currents available.

Wednesday Night

Winds: N, 10-15 kts.
Waves: N, 2-3 feet, 5-6 sec.
No currents available.

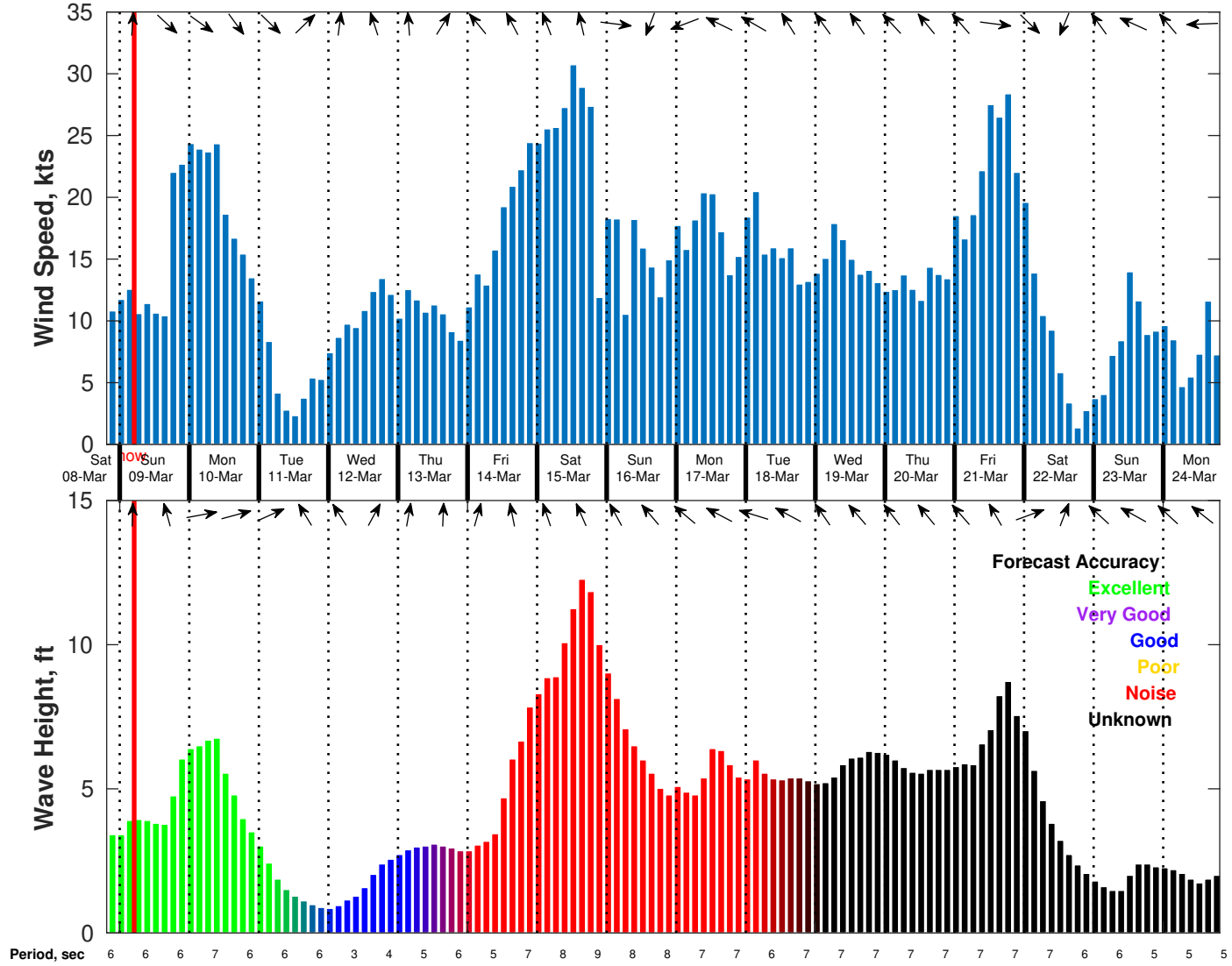
Wednesday

Winds: N, 10-15 kts.
Waves: N, 2-3 feet, 4-5 sec.
No currents available.

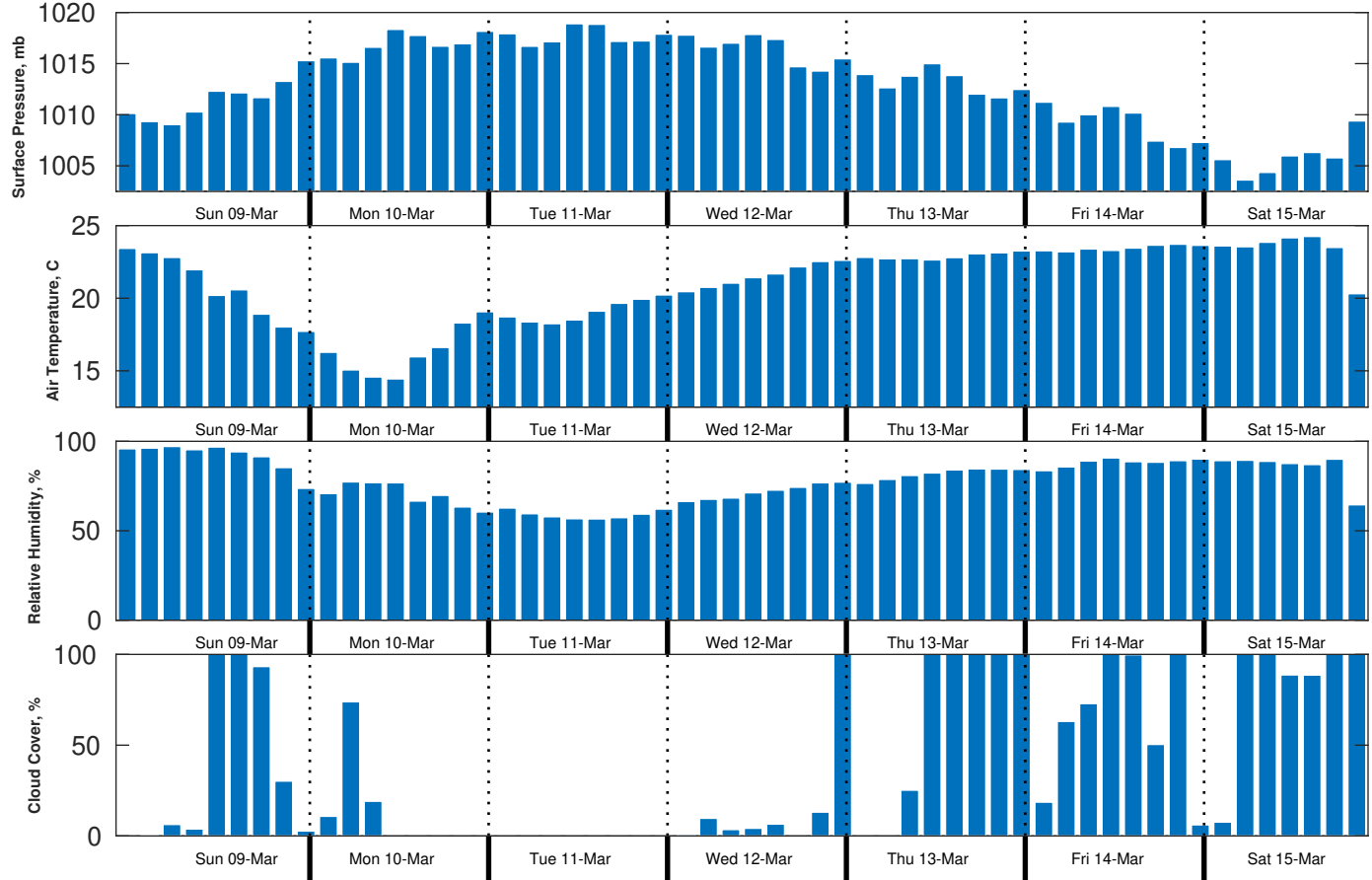
Thursday Night

Winds: NE, 10-15 kts.
Waves: N, 3-4 feet, 5-6 sec.
No currents available.

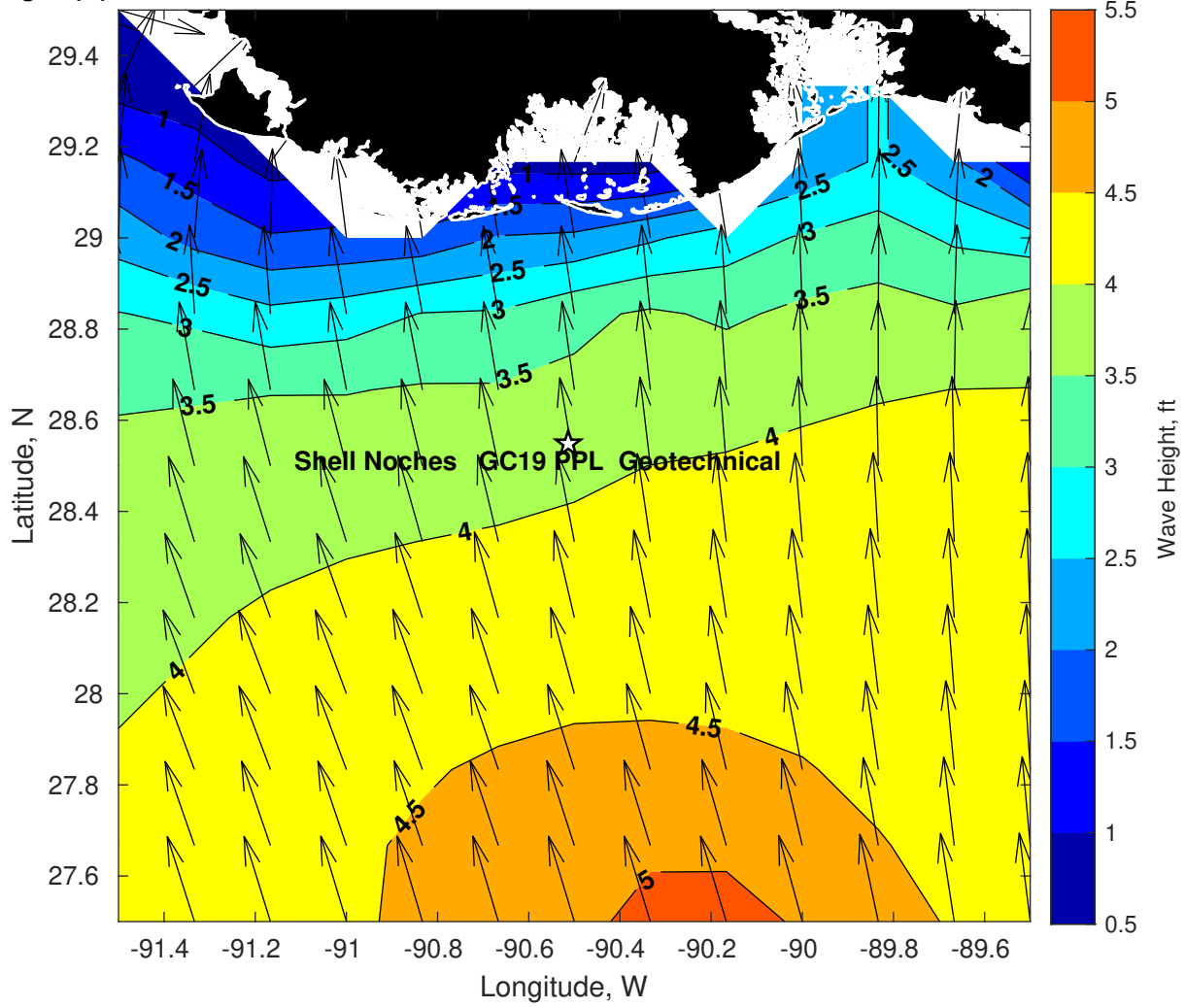
Wind & Wave Forecast for Shell Noches GC19 PPL Geotechnical from 08-Mar-2025 20:00:00 to 24-Mar-2025 20:00:00



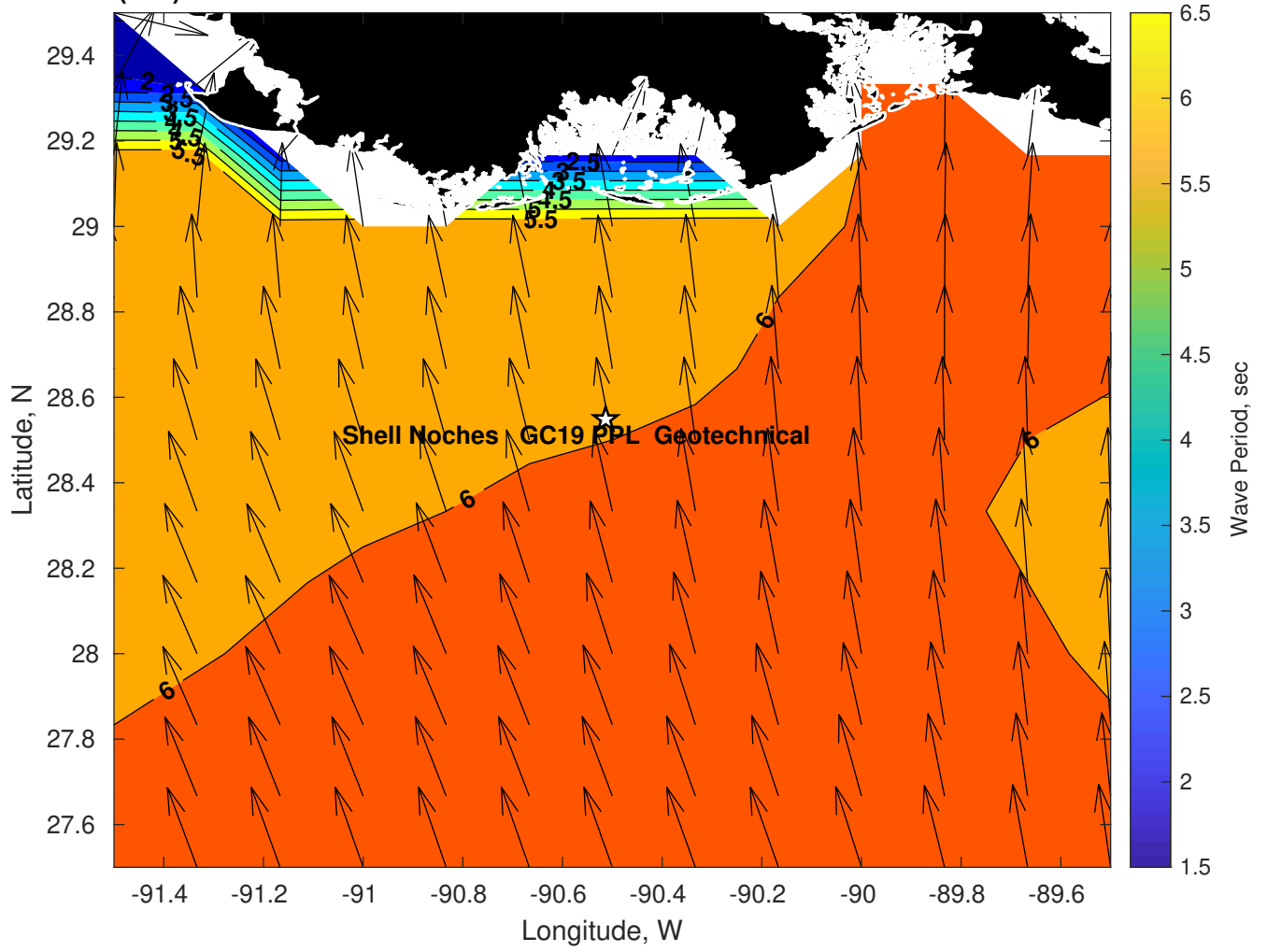
Met Forecast for Shell Noches GC19 PPL Geotechnical from 09-Mar-2025 00:00:00 to 16-Mar-2025 00:00:00



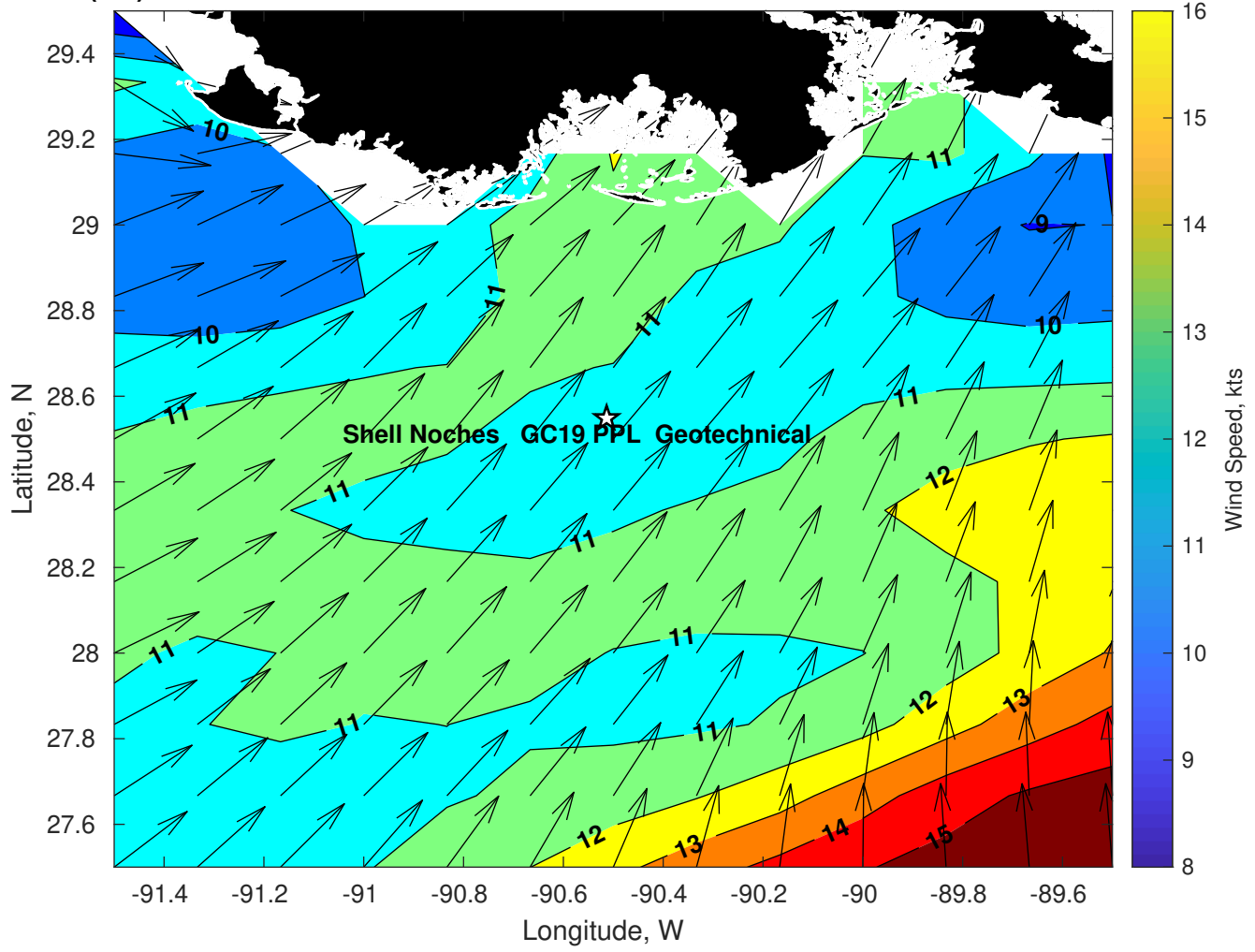
Wave Height (ft) for Shell Noches GC19 PPL Geotechnical at 09-Mar-2025 09:00:00



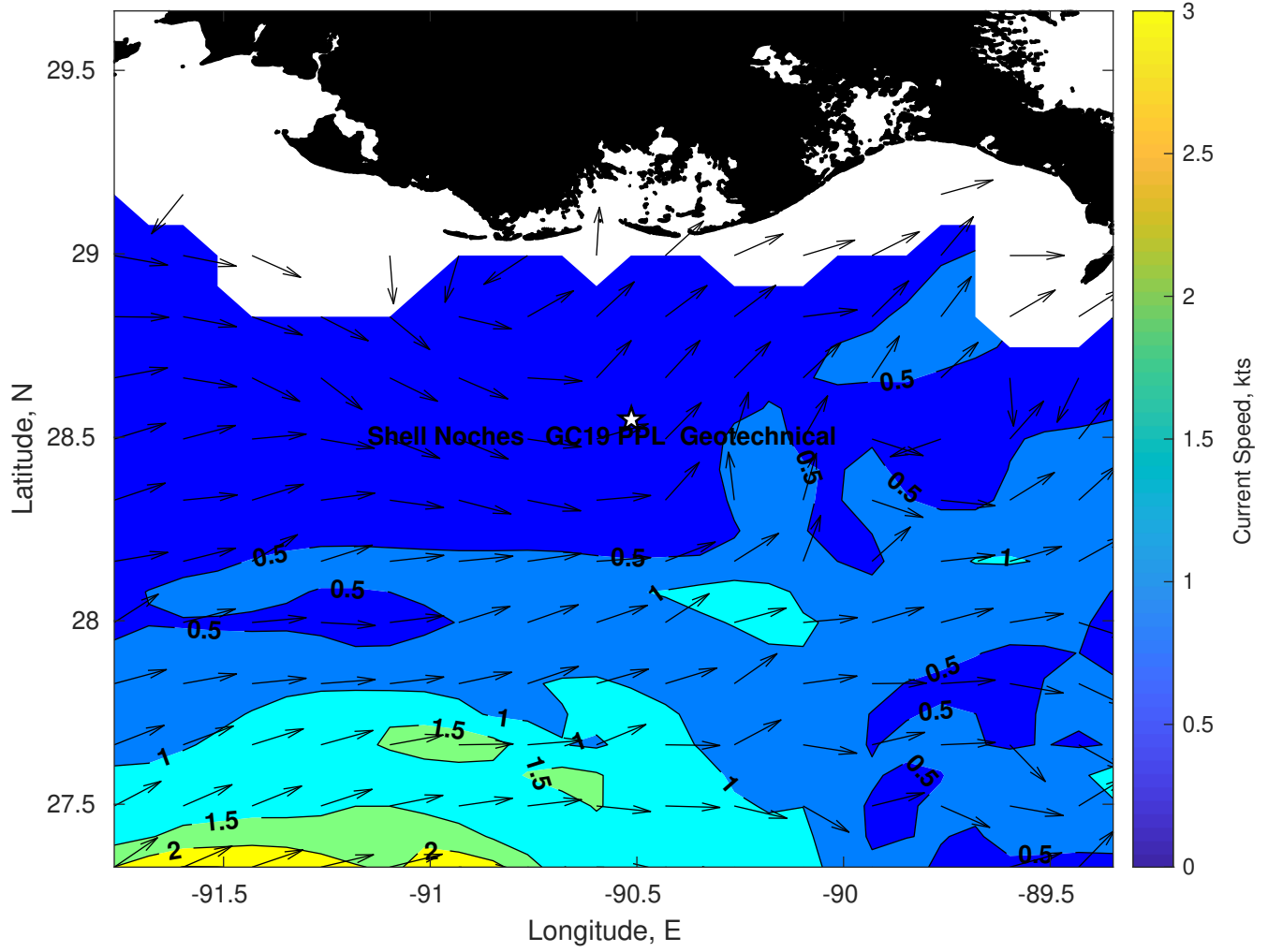
Wave Period (sec) for Shell Noches GC19 PPL Geotechnical at 09-Mar-2025 09:00:00



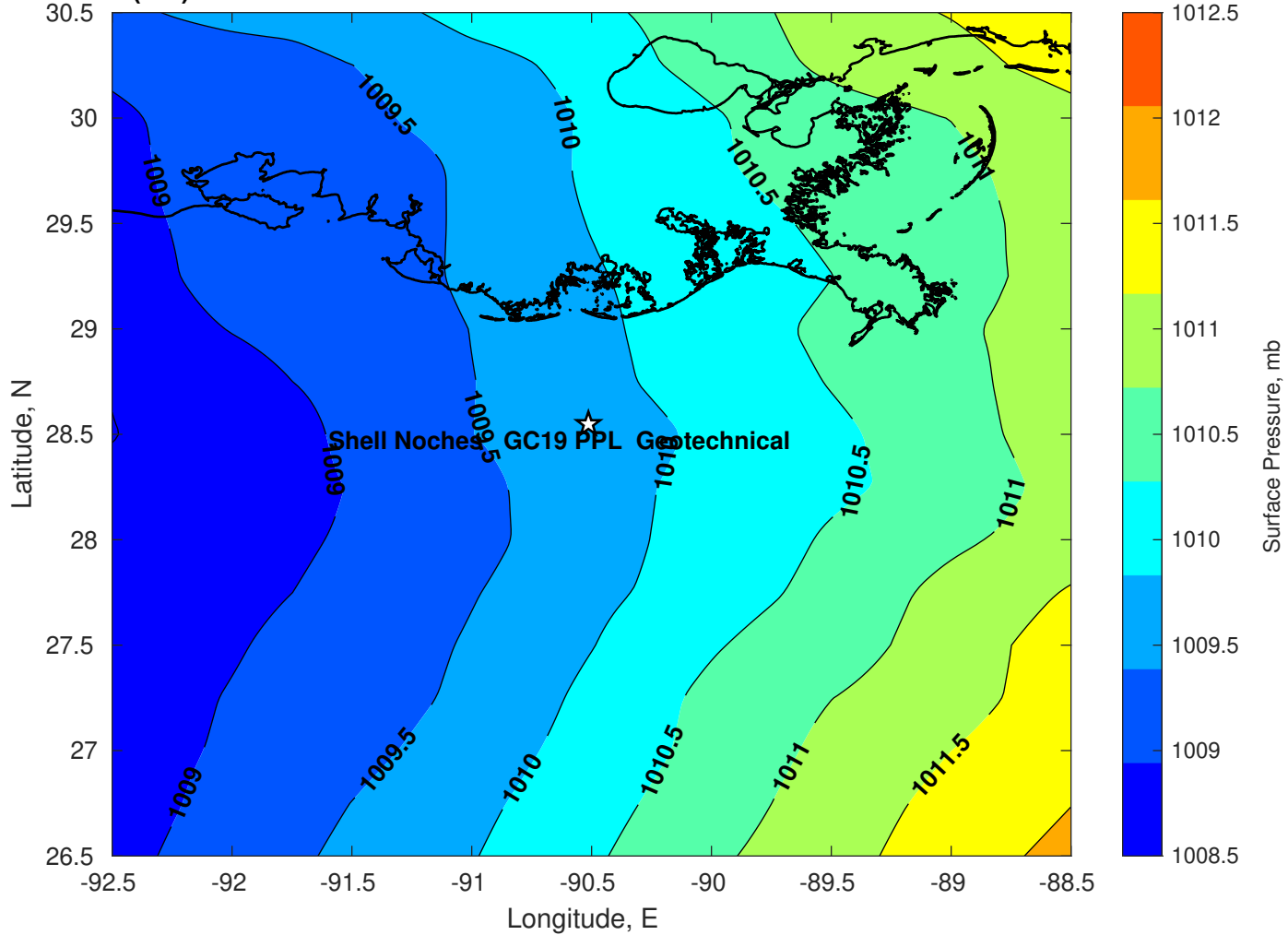
Winds (kts) for Shell Noches GC19 PPL Geotechnical at 09-Mar-2025 09:00:00



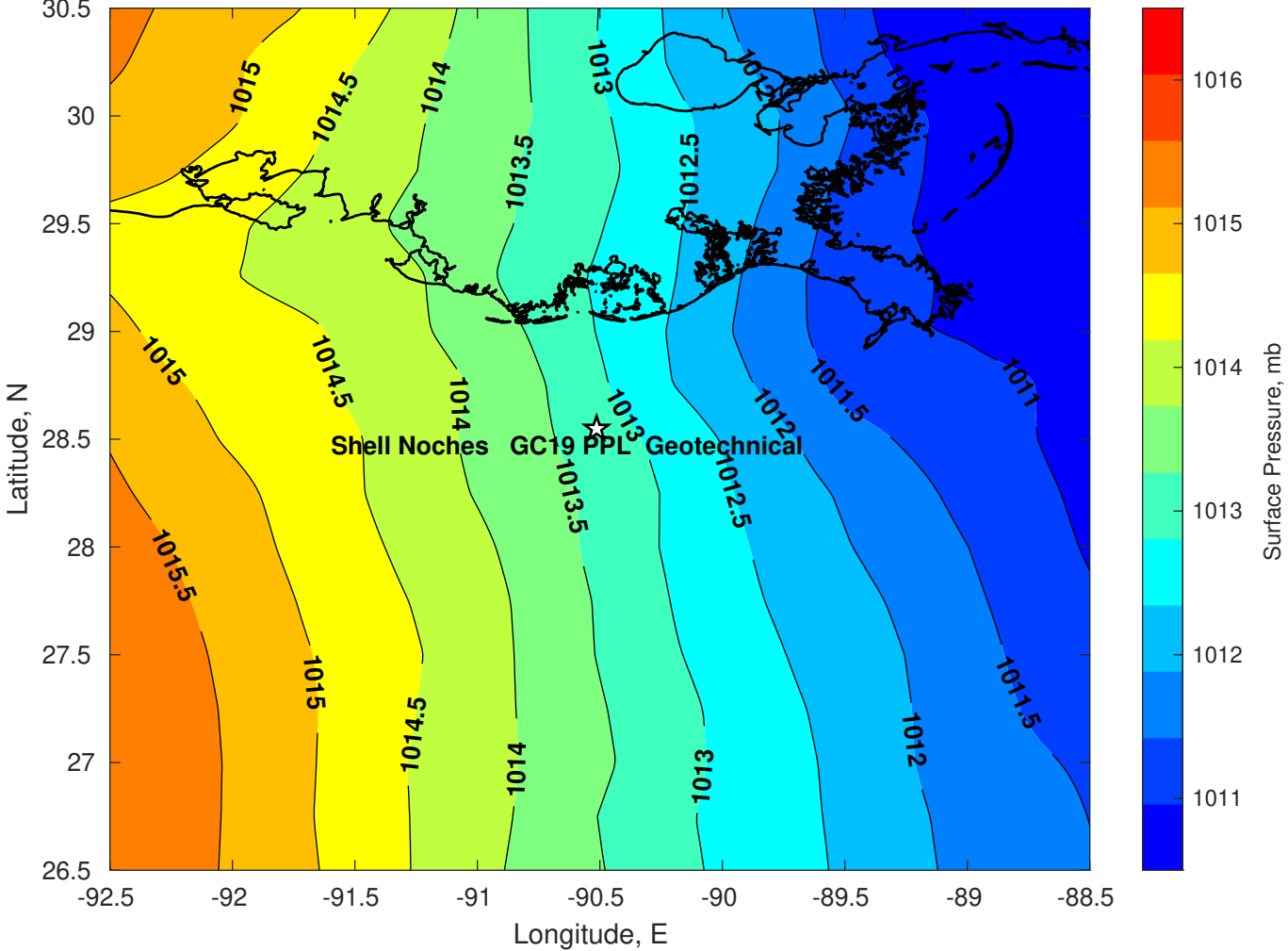
Surface Currents for Shell Noches GC19 PPL Geotechnical at 08-Mar-2025 00:00:00



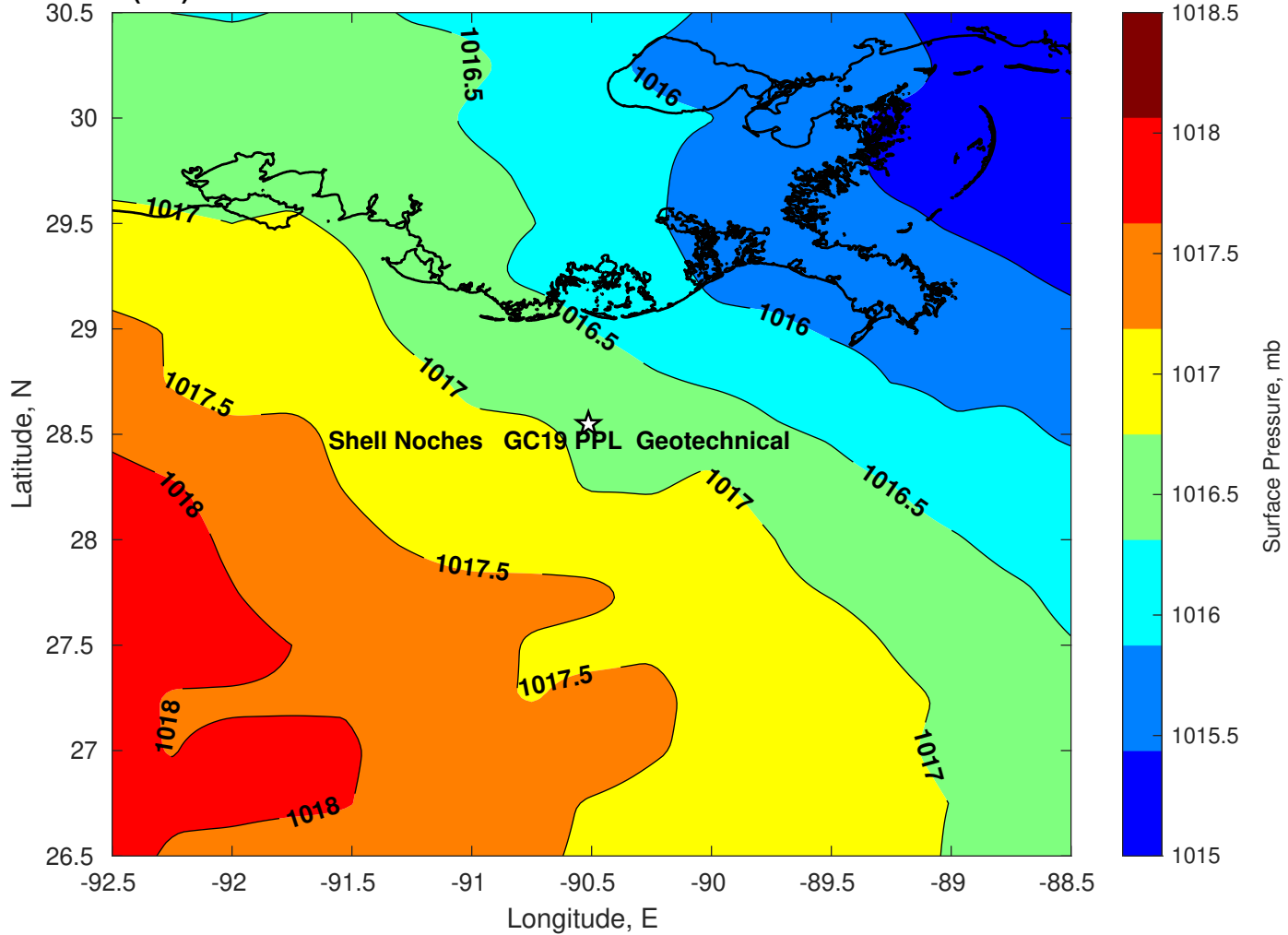
Surface Pressure (mb) for Shell Noches GC19 PPL Geotechnical at 09-Mar-2025 00:00:00



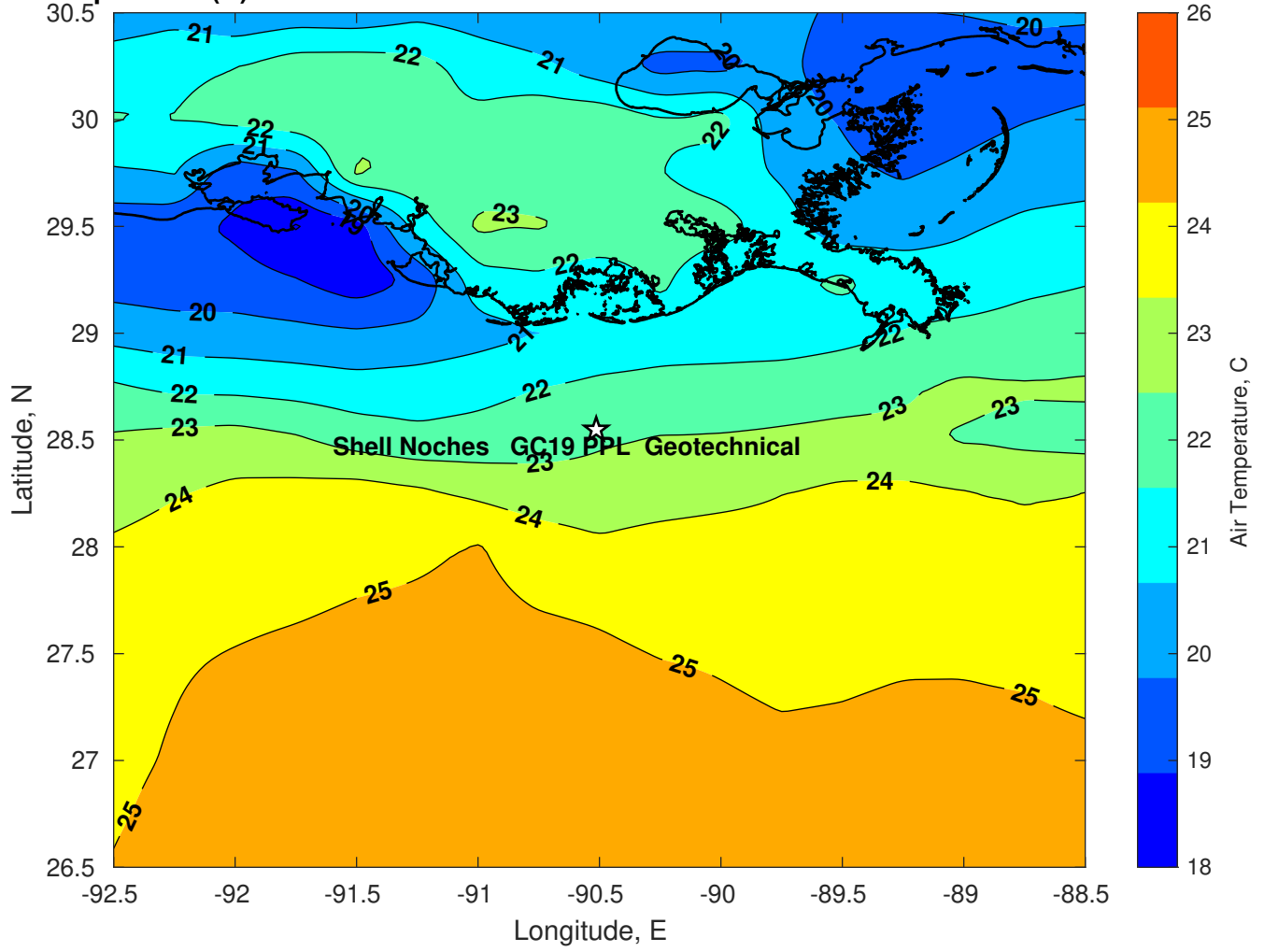
Surface Pressure (mb) for Shell Noches GC19 PPL Geotechnical at 10-Mar-2025 00:00:00



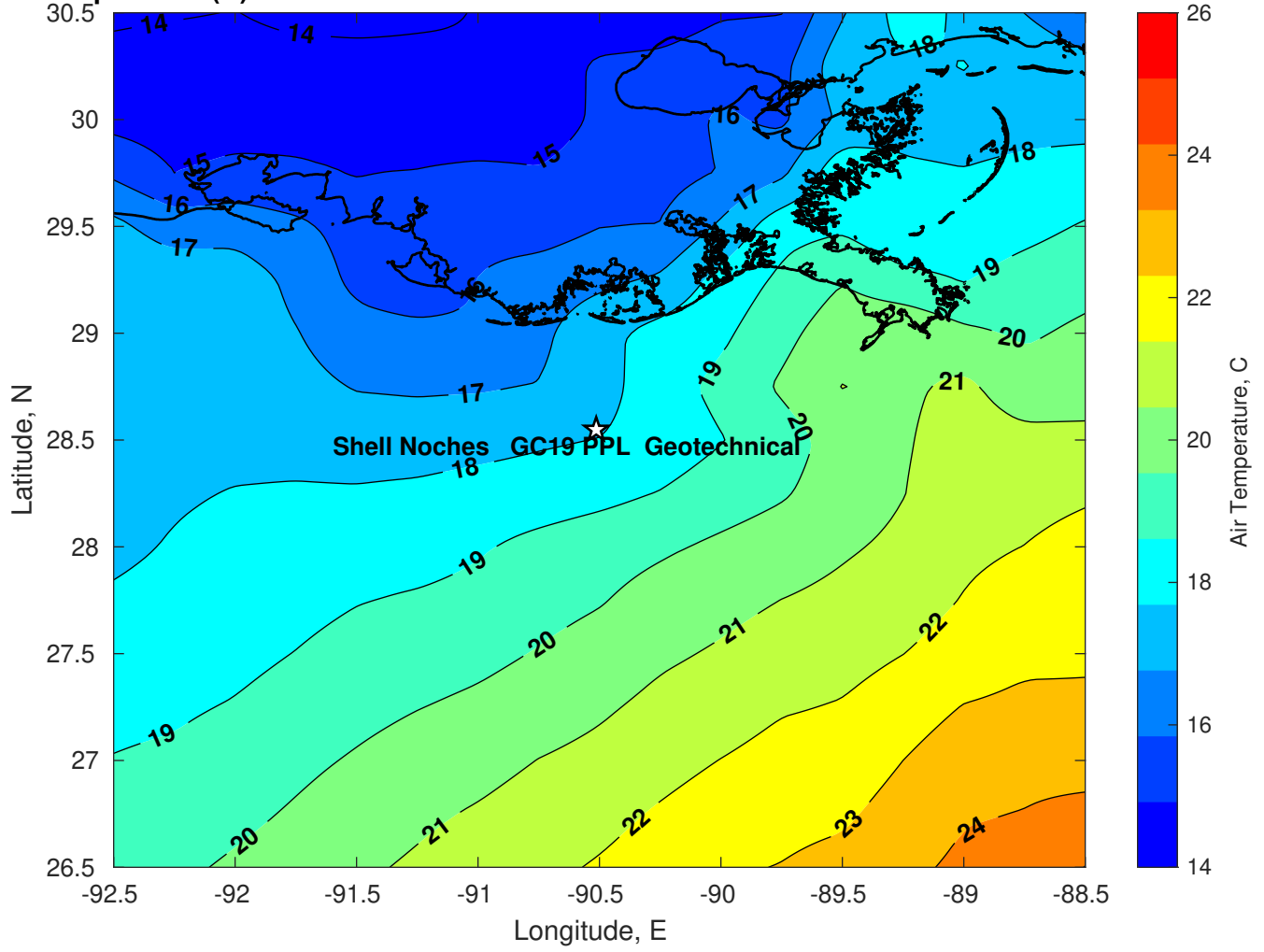
Surface Pressure (mb) for Shell Noches GC19 PPL Geotechnical at 11-Mar-2025 00:00:00



Air Temperature (C) for Shell Noches GC19 PPL Geotechnical at 09-Mar-2025



Air Temperature (C) for Shell Noches GC19 PPL Geotechnical at 09-Mar-2025



Air Temperature (C) for Shell Noches GC19 PPL Geotechnical at 09-Mar-2025

