

\*\*\*\*\*

Marine Weather Forecast for CSA (ONHYM) PPL EBS - Senegal  
Forecast valid as of 10-Mar-2025 0800 GMT

\*\*\*\*\*

All times are local.

Today

Winds: N, 10-15 kts.  
Waves: N, 7-8 feet, 12-13 sec.  
No currents available.

Tonight

Winds: N, 15-20 kts.  
Waves: N, 7-8 feet, 12-13 sec.  
No currents available.

Tuesday

Winds: N, 15-20 kts.  
Waves: N, 6-7 feet, 12-13 sec.  
No currents available.

Tuesday Night

Winds: N, 15-20 kts.  
Waves: N, 6-7 feet, 13-14 sec.  
No currents available.

Wednesday

Winds: N, 15-20 kts.  
Waves: N, 6-7 feet, 13-14 sec.  
No currents available.

Wednesday Night

Winds: N, 15-20 kts.  
Waves: NW, 6-7 feet, 14-15 sec.  
No currents available.

Thursday

Winds: N, 15-20 kts.  
Waves: NW, 7-8 feet, 14-15 sec.  
No currents available.

Thursday Night

Winds: N, 15-20 kts.  
Waves: NW, 6-7 feet, 12-13 sec.  
No currents available.

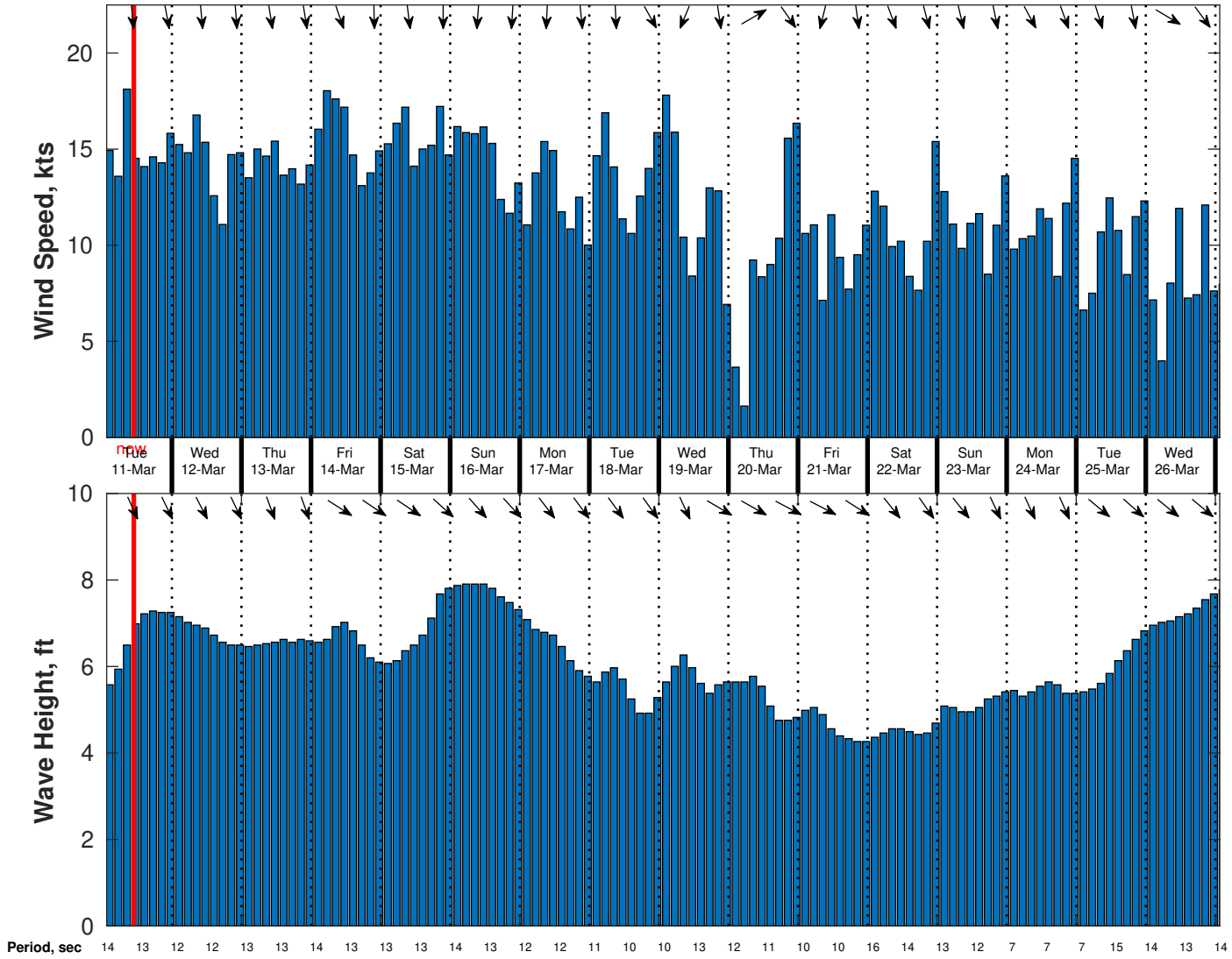
Friday

Winds: N, 15-20 kts.  
Waves: NW, 7-8 feet, 15-16 sec.  
No currents available.

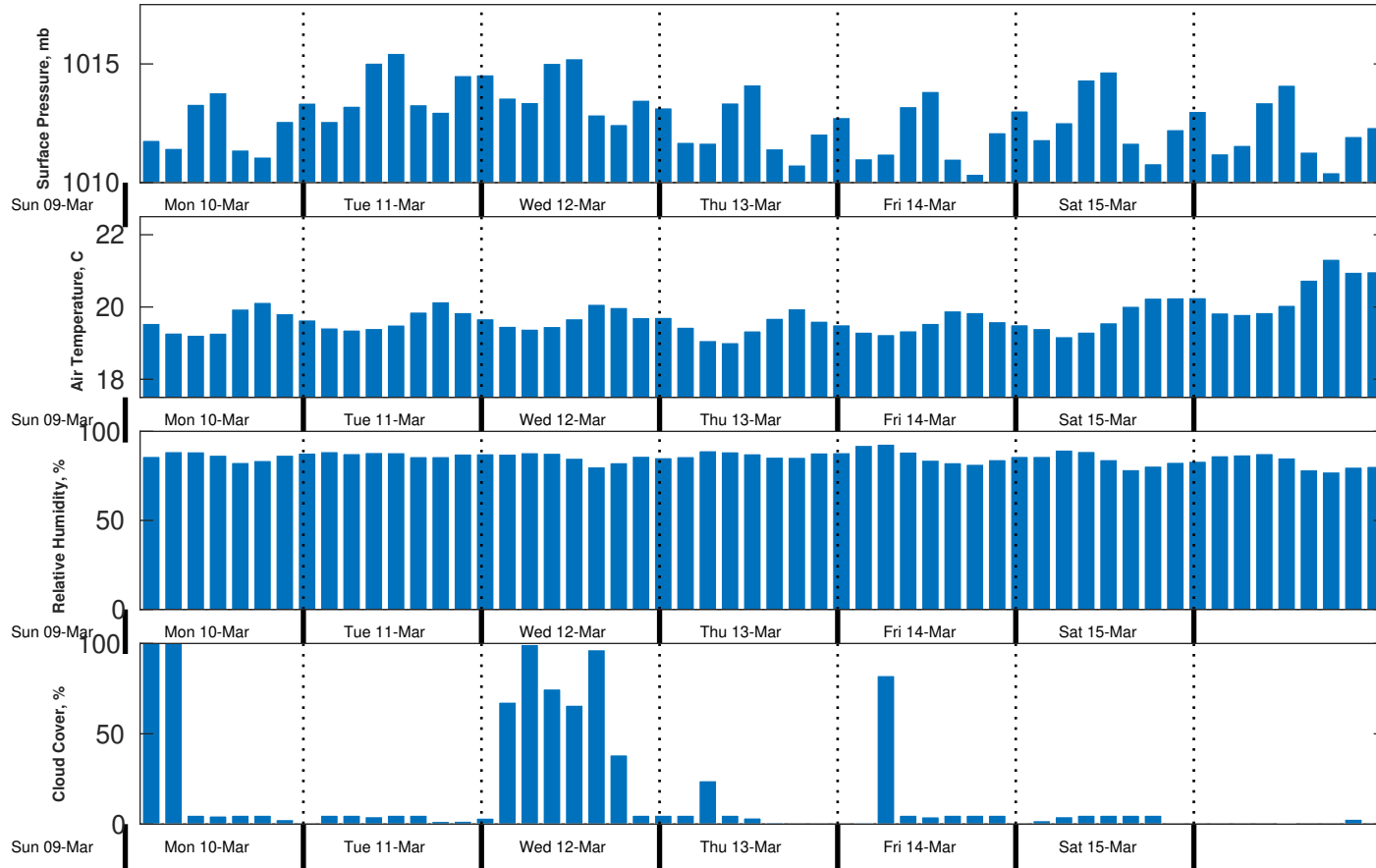
Friday Night

Winds: N, 15-20 kts.  
Waves: NW, 7-8 feet, 14-15 sec.  
No currents available.

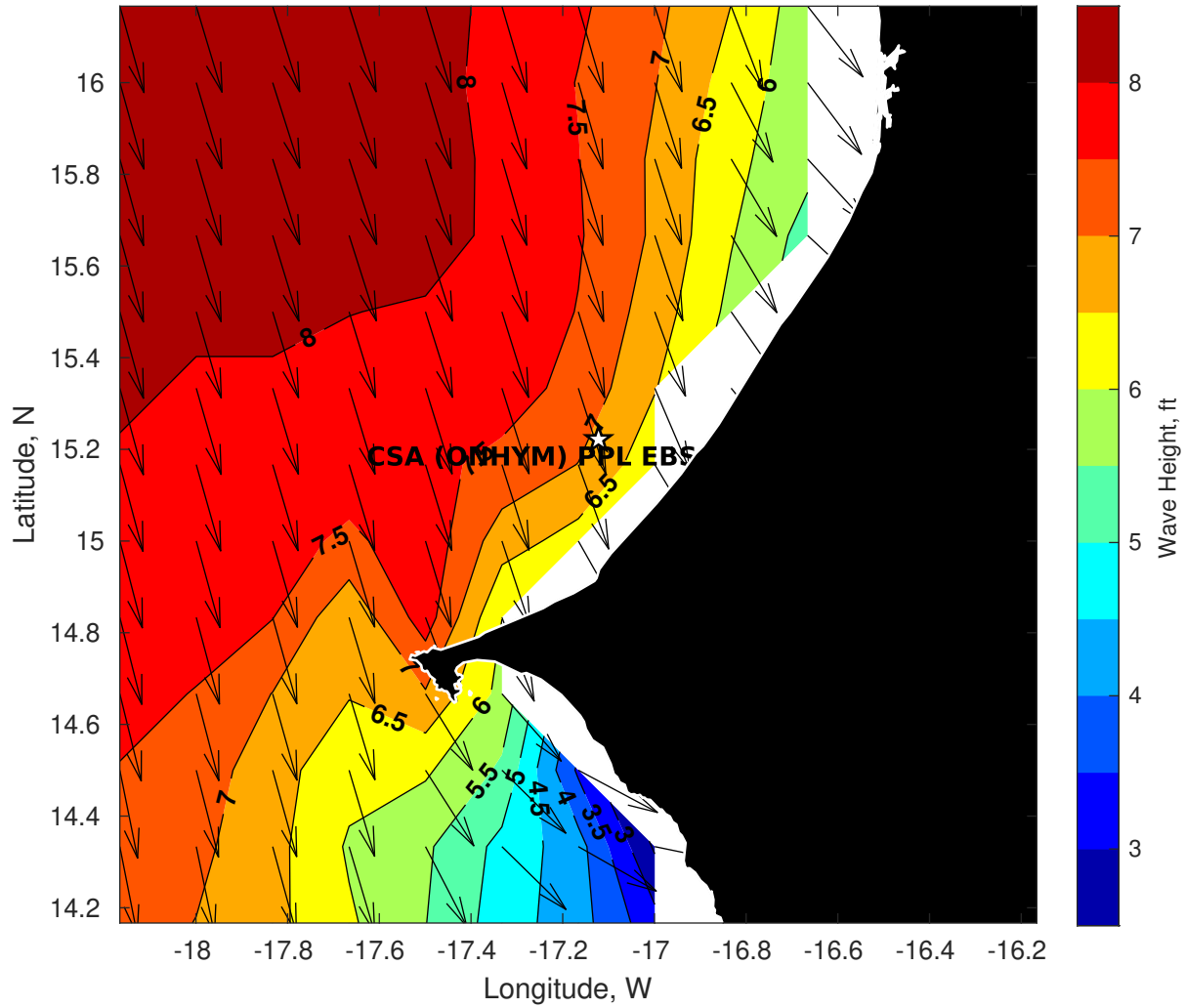
**Wind & Wave Forecast for CSA (ONHYM) PPL EBS - Senegal from 10-Mar-2025 01:00:00 to 26-Mar-2025 01:00:00**



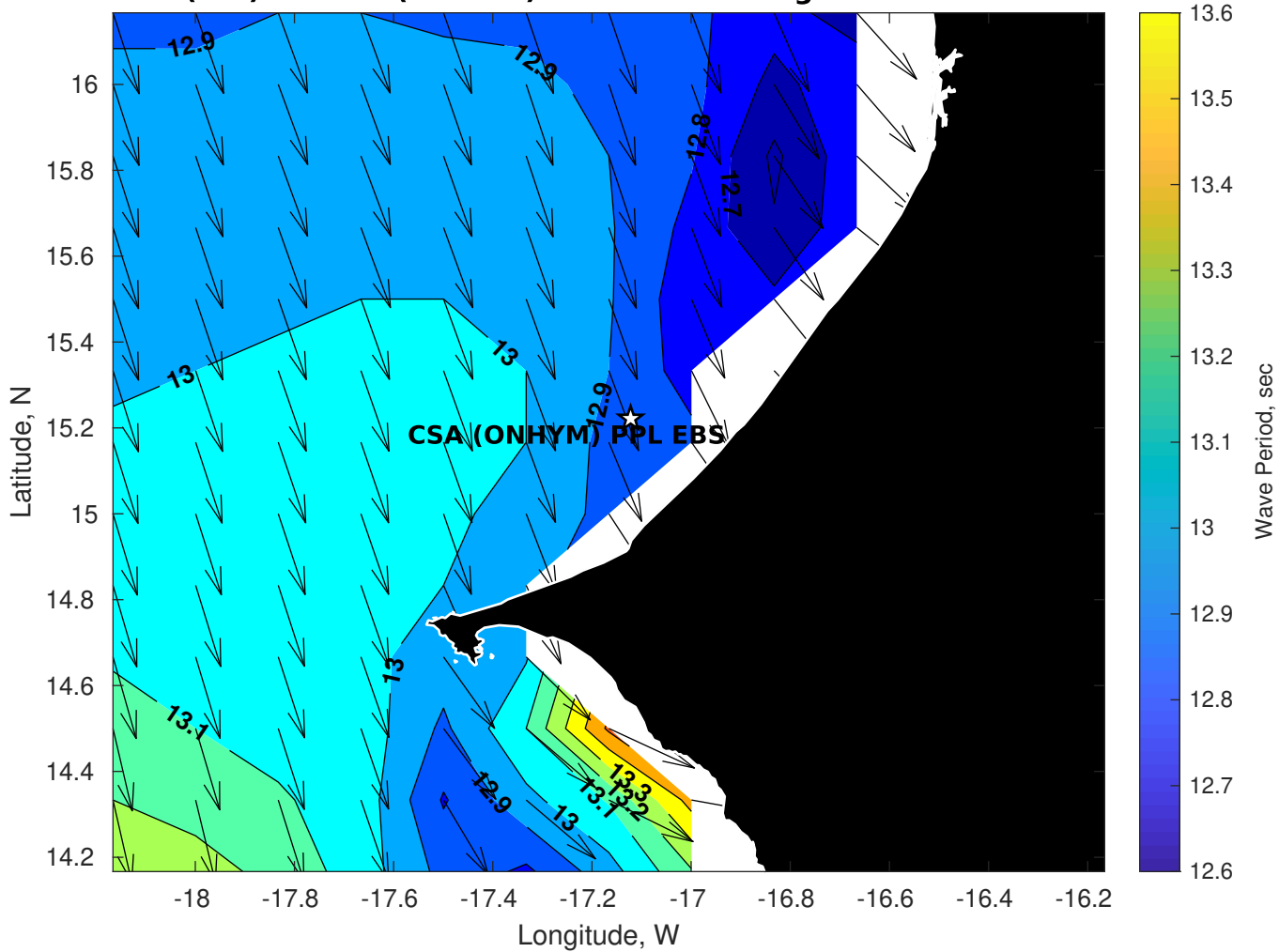
**Met Forecast for CSA (ONHYM) PPL EBS - Senegal from 10-Mar-2025 00:00:00 to 17-Mar-2025 00:00:00**



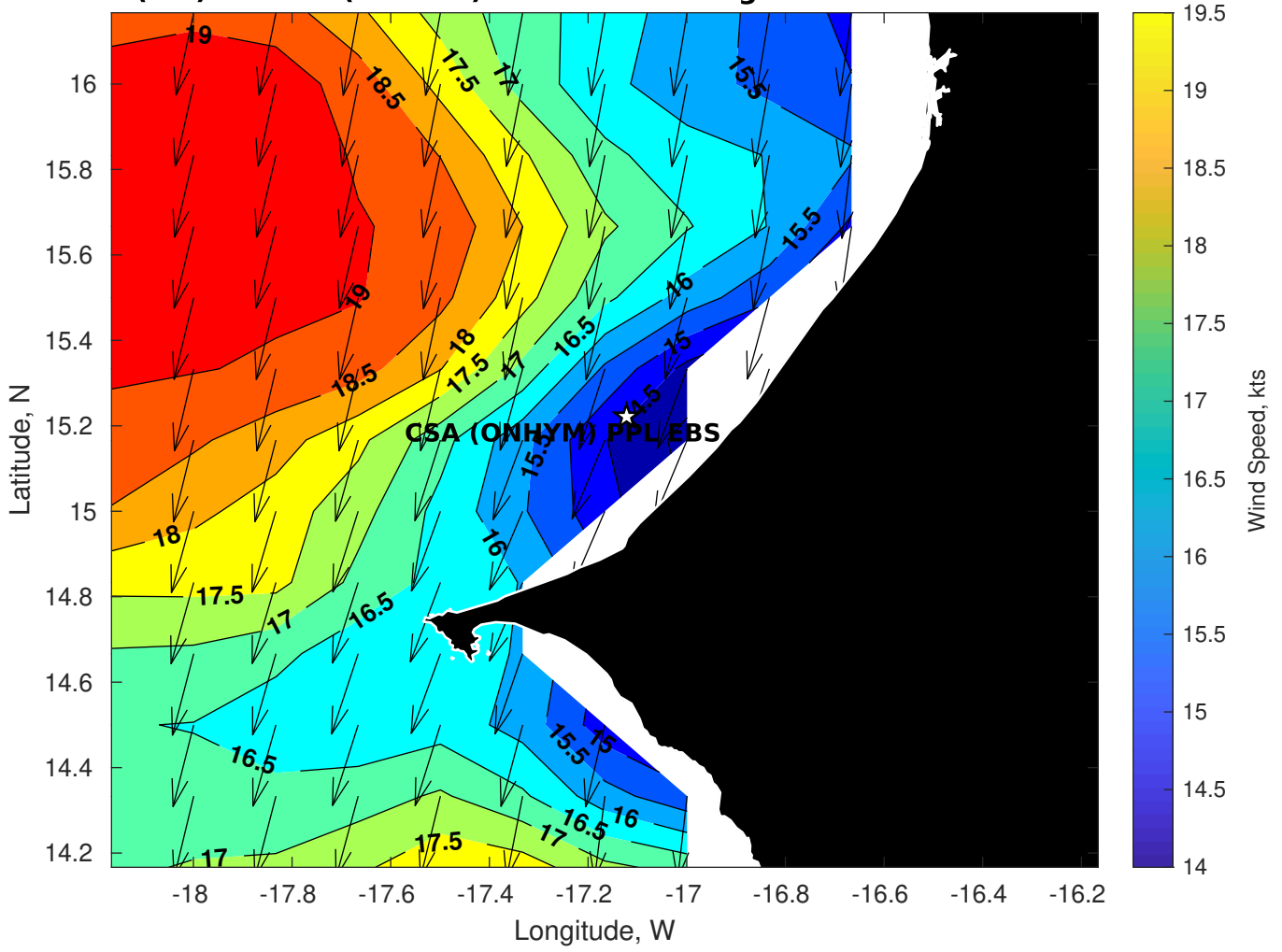
**Wave Height (ft) for CSA (ONHYM) PPL EBS - Senegal at 10-Mar-2025 09:00:00**



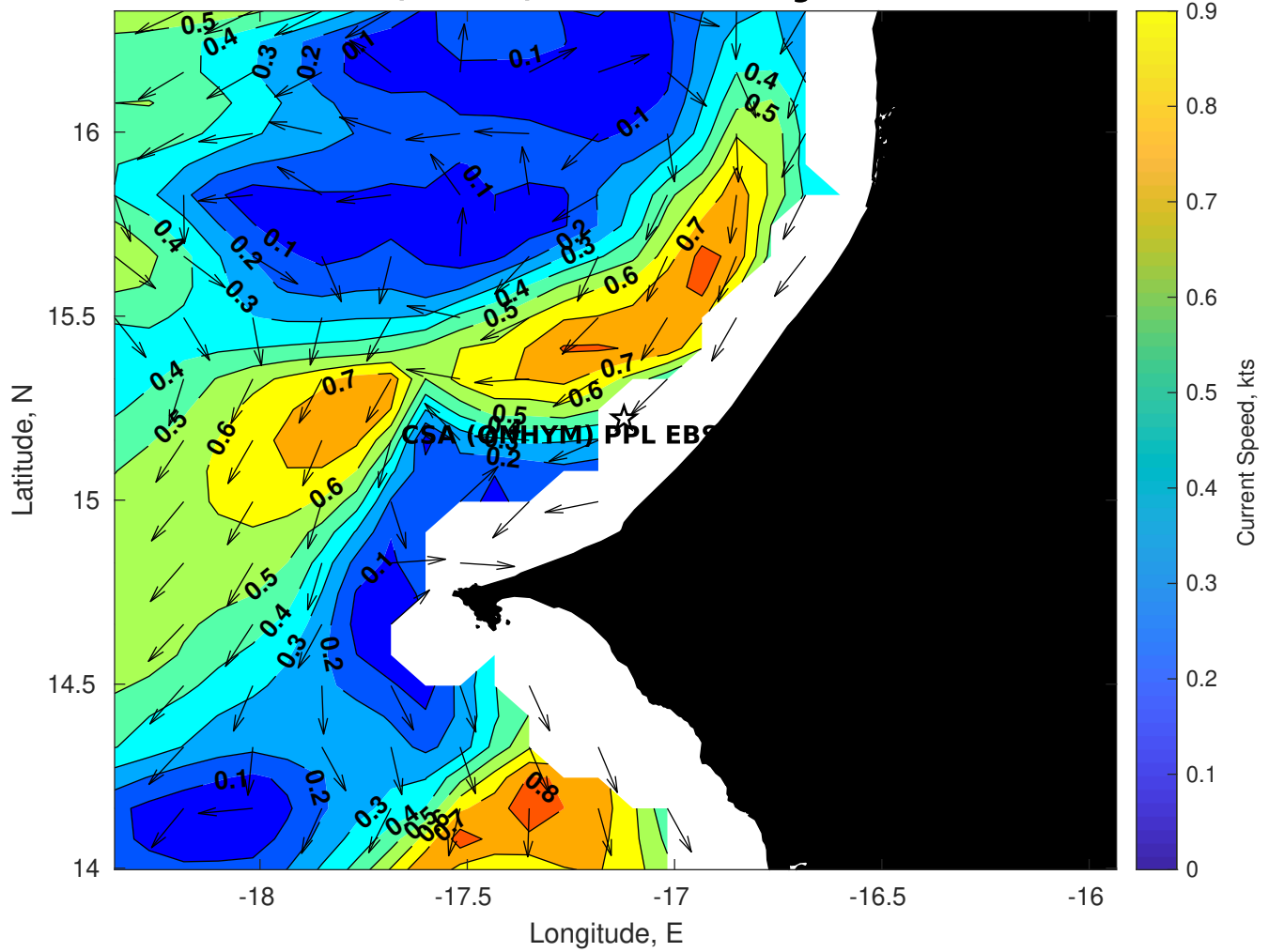
**Wave Period (sec) for CSA (ONHYM) PPL EBS - Senegal at 10-Mar-2025 09:00:00**



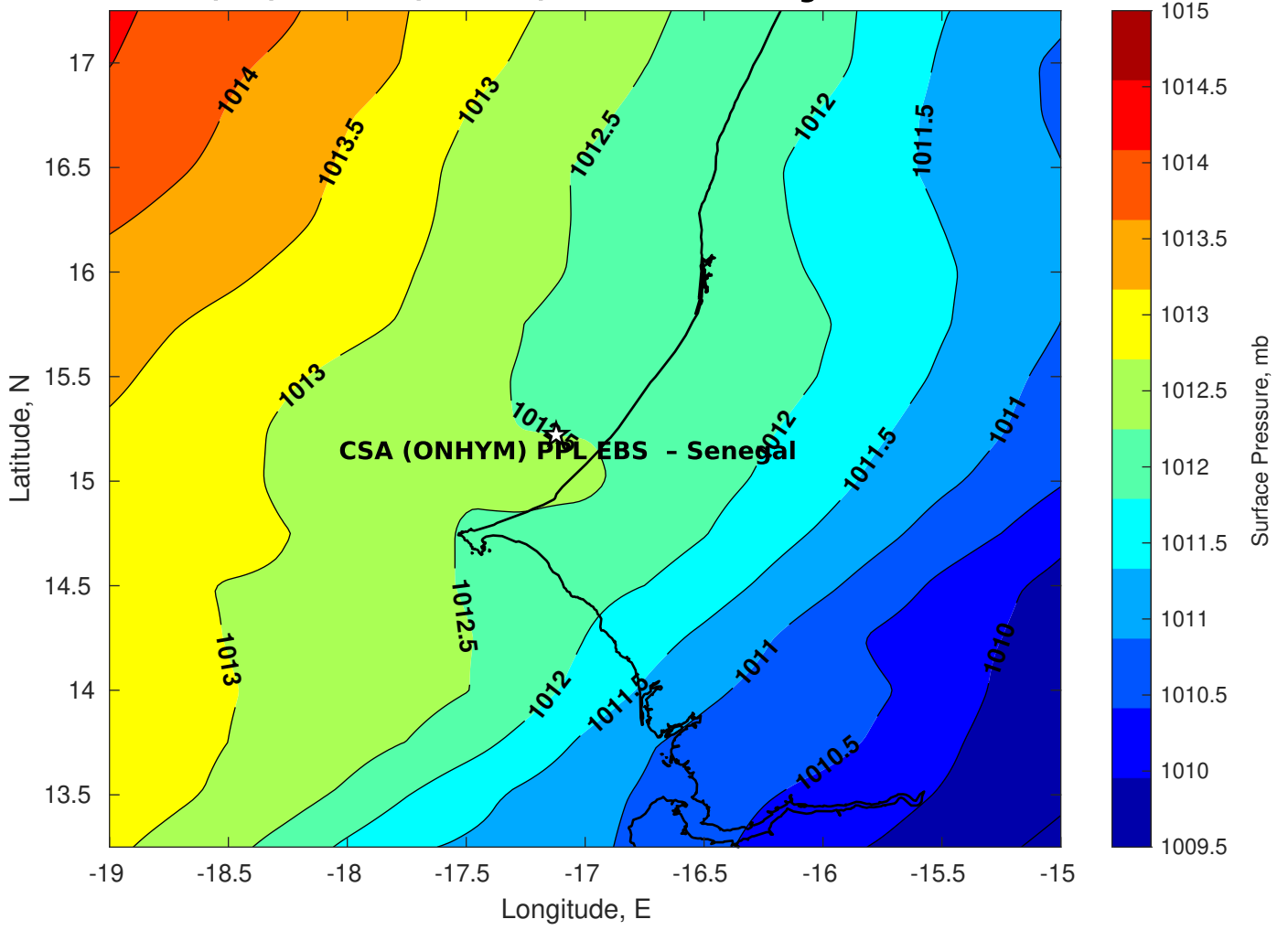
**Winds (kts) for CSA (ONHYM) PPL EBS - Senegal at 10-Mar-2025 09:00:00**



**Surface Currents for CSA (ONHYM) PPL EBS - Senegal at 09-Mar-2025 00:00:00**

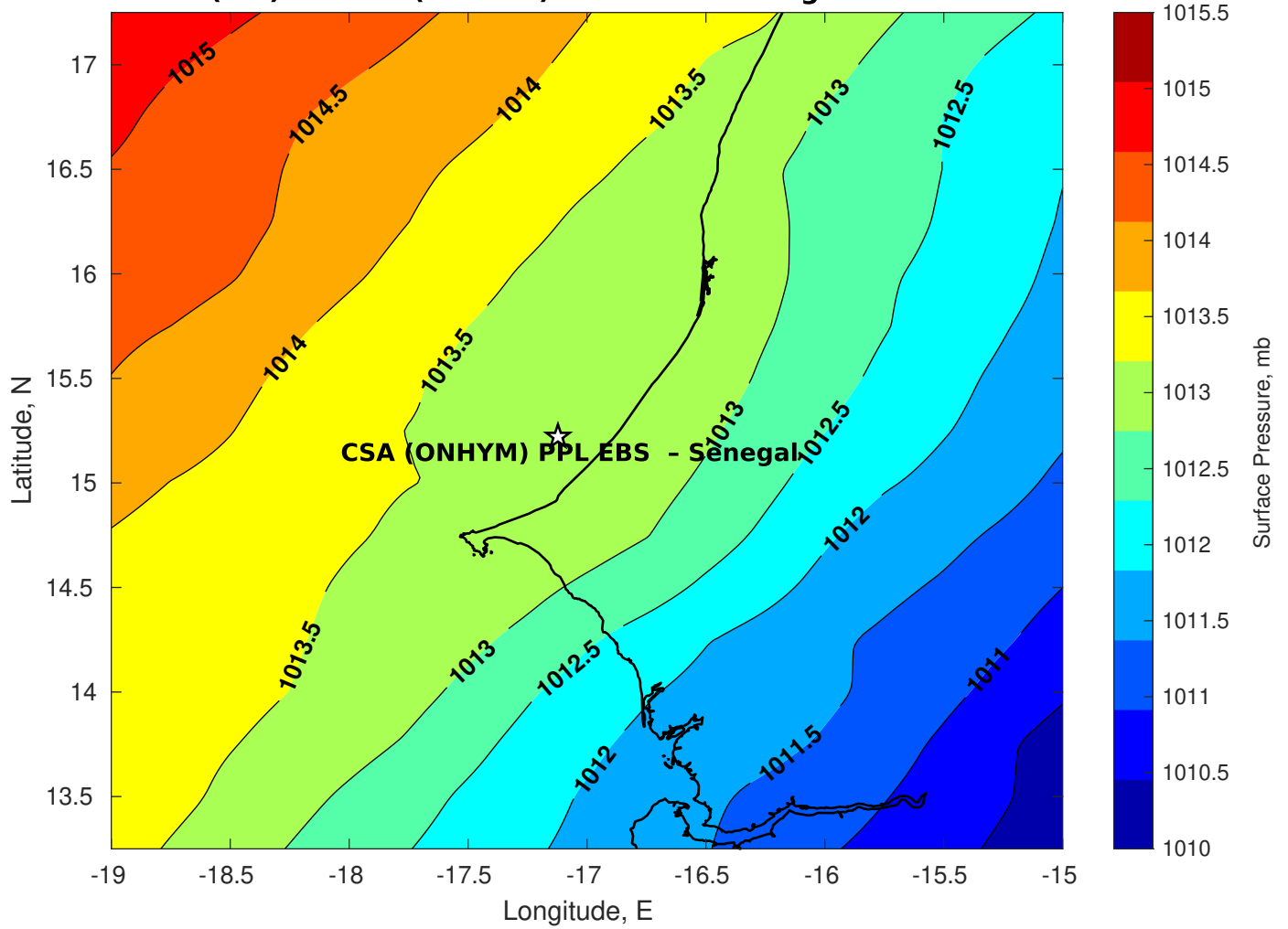


**Surface Pressure (mb) for CSA (ONHYM) PPL EBS - Senegal at 10-Mar-2025 00:00:00**

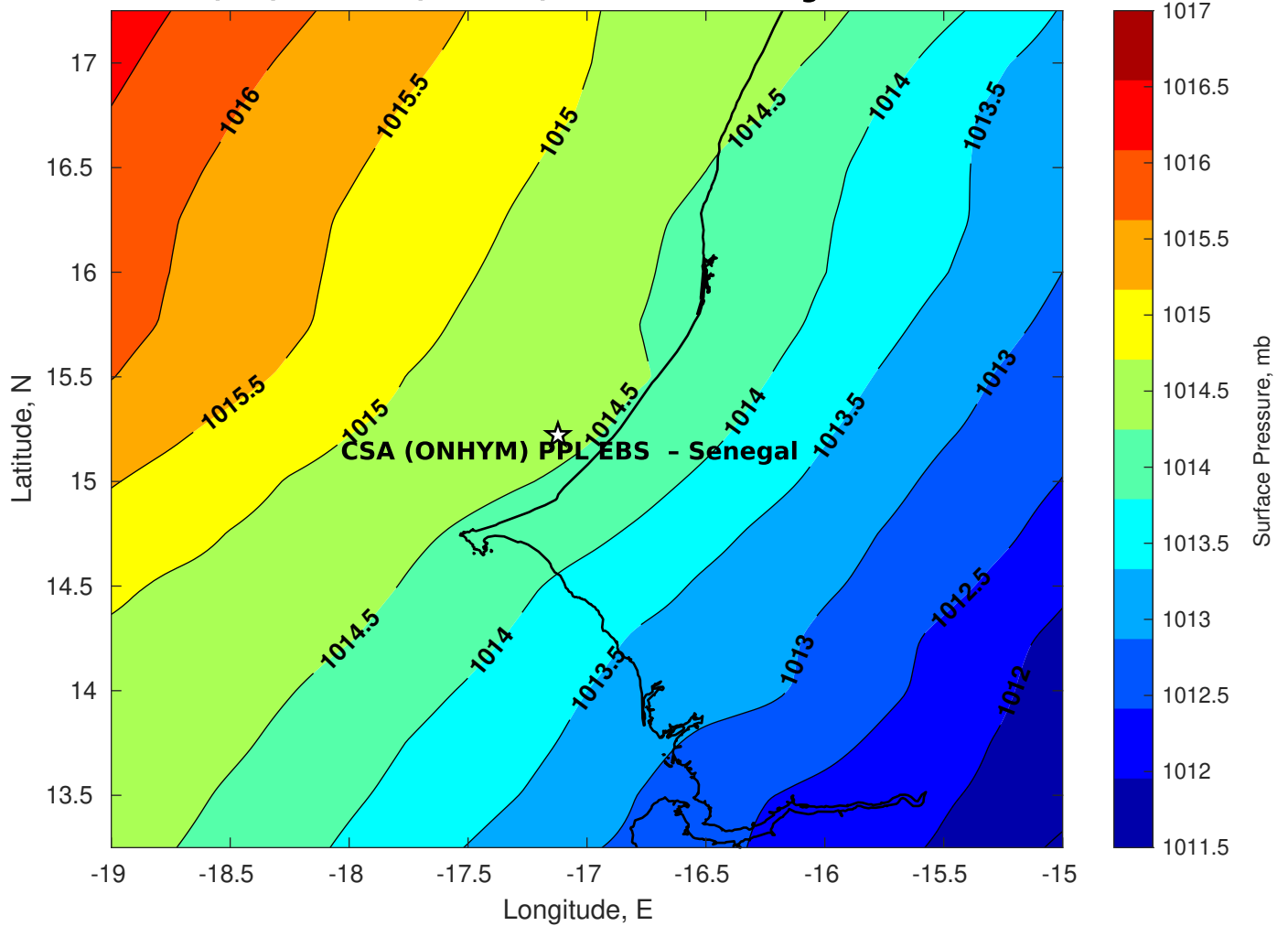




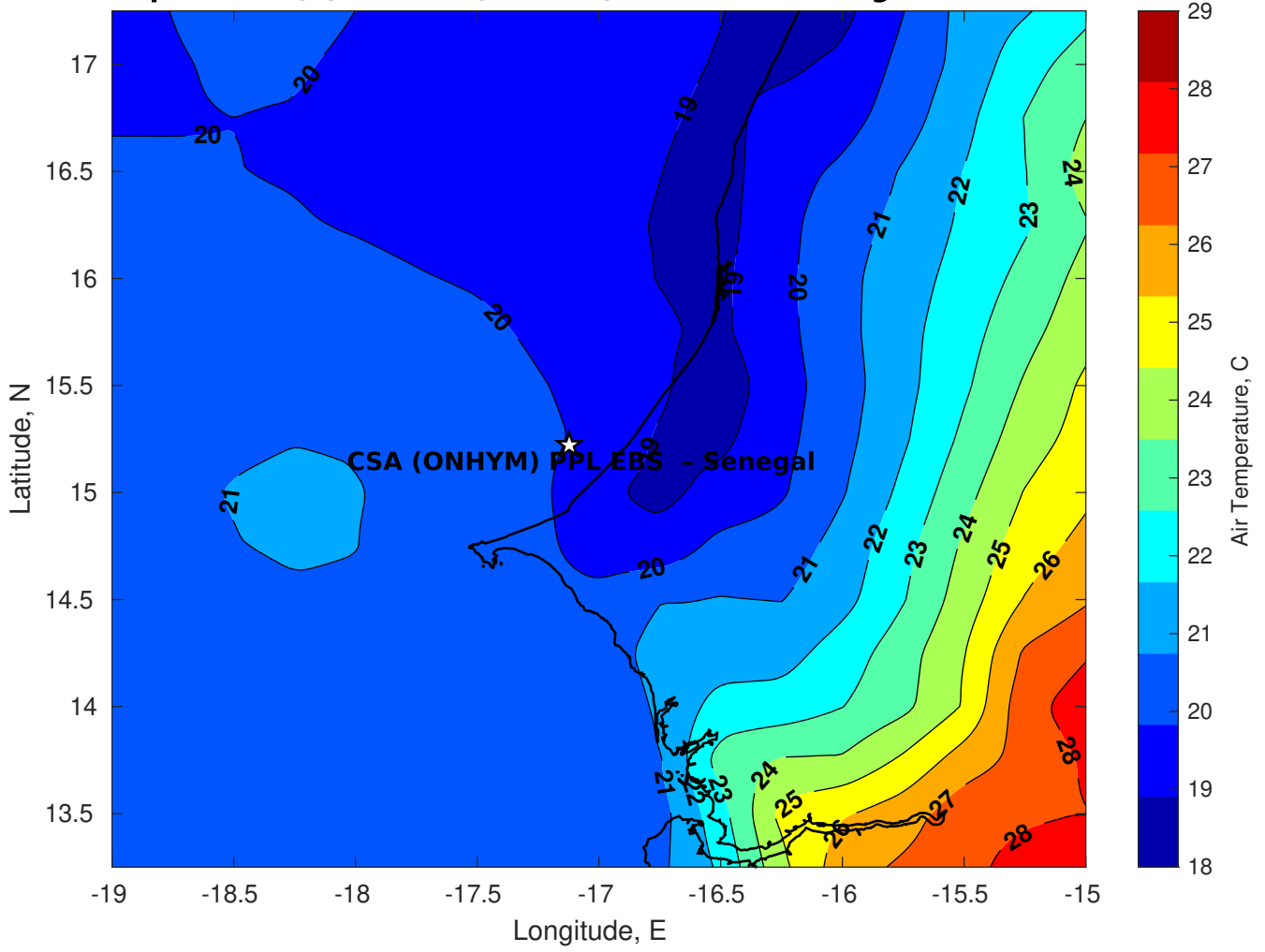
Surface Pressure (mb) for CSA (ONHYM) PPL EBS - Senegal at 11-Mar-2025 00:00:00



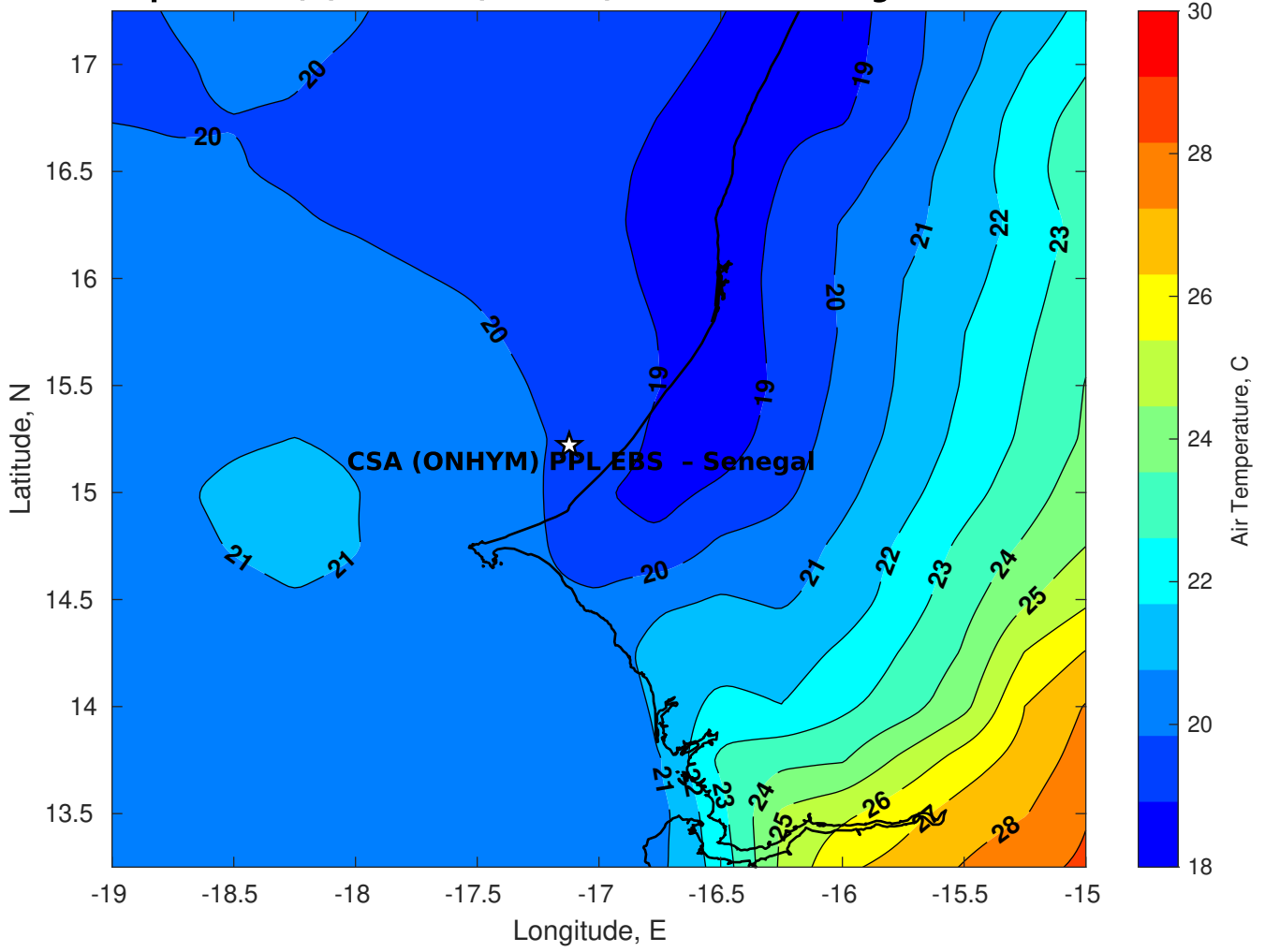
**Surface Pressure (mb) for CSA (ONHYM) PPL EBS - Senegal at 12-Mar-2025 00:00:00**



**Air Temperature (C) for CSA (ONHYM) PPL EBS - Senegal at 10-Mar-2025**



**Air Temperature (C) for CSA (ONHYM) PPL EBS - Senegal at 10-Mar-2025**



**Air Temperature (C) for CSA (ONHYM) PPL EBS - Senegal at 10-Mar-2025**

