
Marine Weather Forecast for Shell Noches GC19 PPL Geotechnical
Forecast valid as of 10-Mar-2025 0800 GMT

All times are local.

Today

Winds: NW, 25-30 kts.
Waves: W, 7-8 feet, 7-8 sec.
No currents available.

Tonight

Winds: N, 5-10 kts.
Waves: W, 3-4 feet, 5-6 sec.
No currents available.

Monday

Winds: NW, 20-25 kts.
Waves: W, 7-8 feet, 7-8 sec.
No currents available.

Tuesday Night

Winds: N, 5-10 kts.
Waves: N, 1-2 feet, 5-6 sec.
No currents available.

Tuesday

Winds: NW, less than 5 kts.
Waves: N, 1-2 feet, 6-7 sec.
No currents available.

Wednesday Night

Winds: N, 10-15 kts.
Waves: N, 3-4 feet, 5-6 sec.
No currents available.

Wednesday

Winds: N, 15-20 kts.
Waves: N, 3-4 feet, 4-5 sec.
No currents available.

Thursday Night

Winds: N, 5-10 kts.
Waves: NW, 2-3 feet, 5-6 sec.
No currents available.

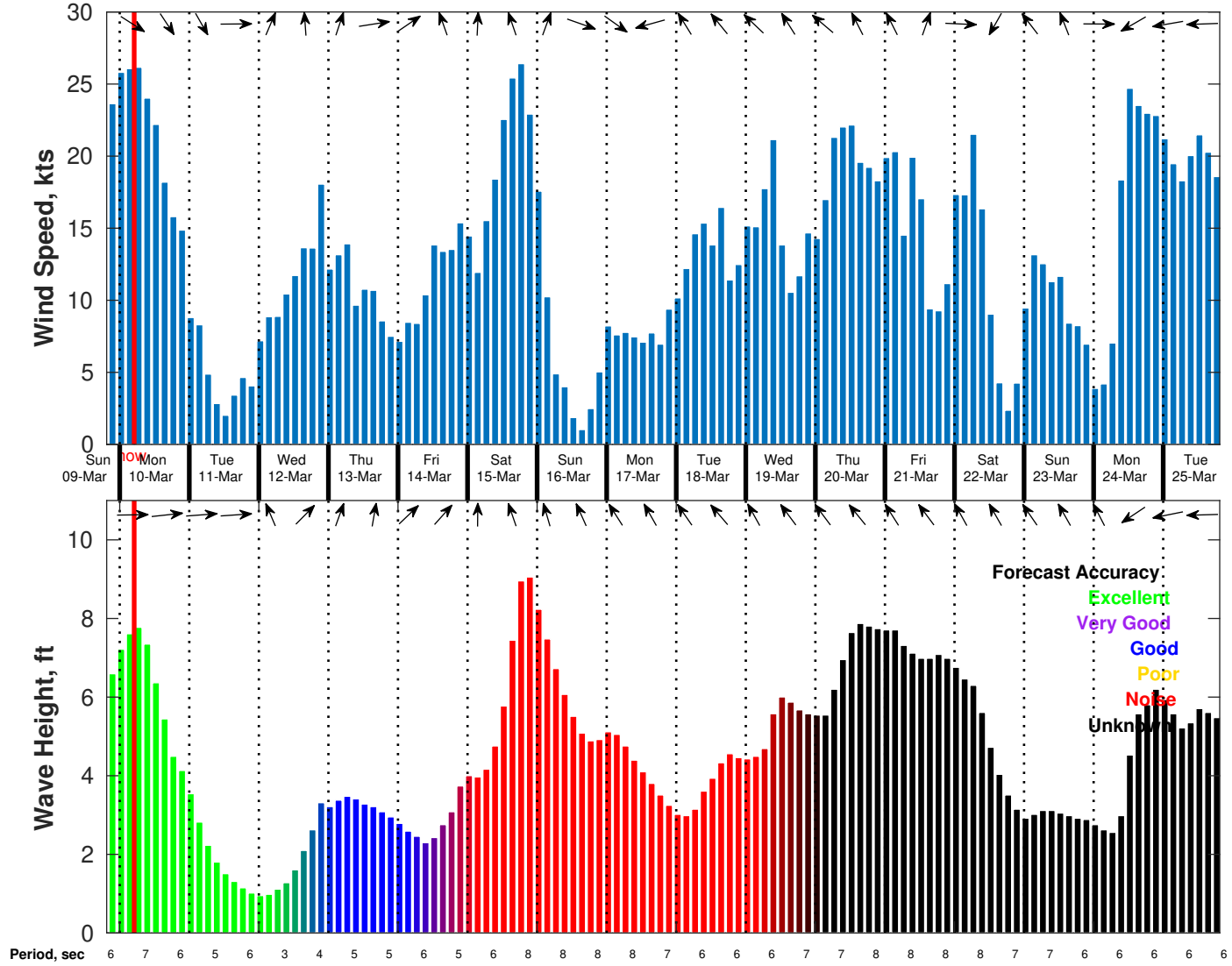
Thursday

Winds: NW, 10-15 kts.
Waves: N, 3-4 feet, 5-6 sec.
No currents available.

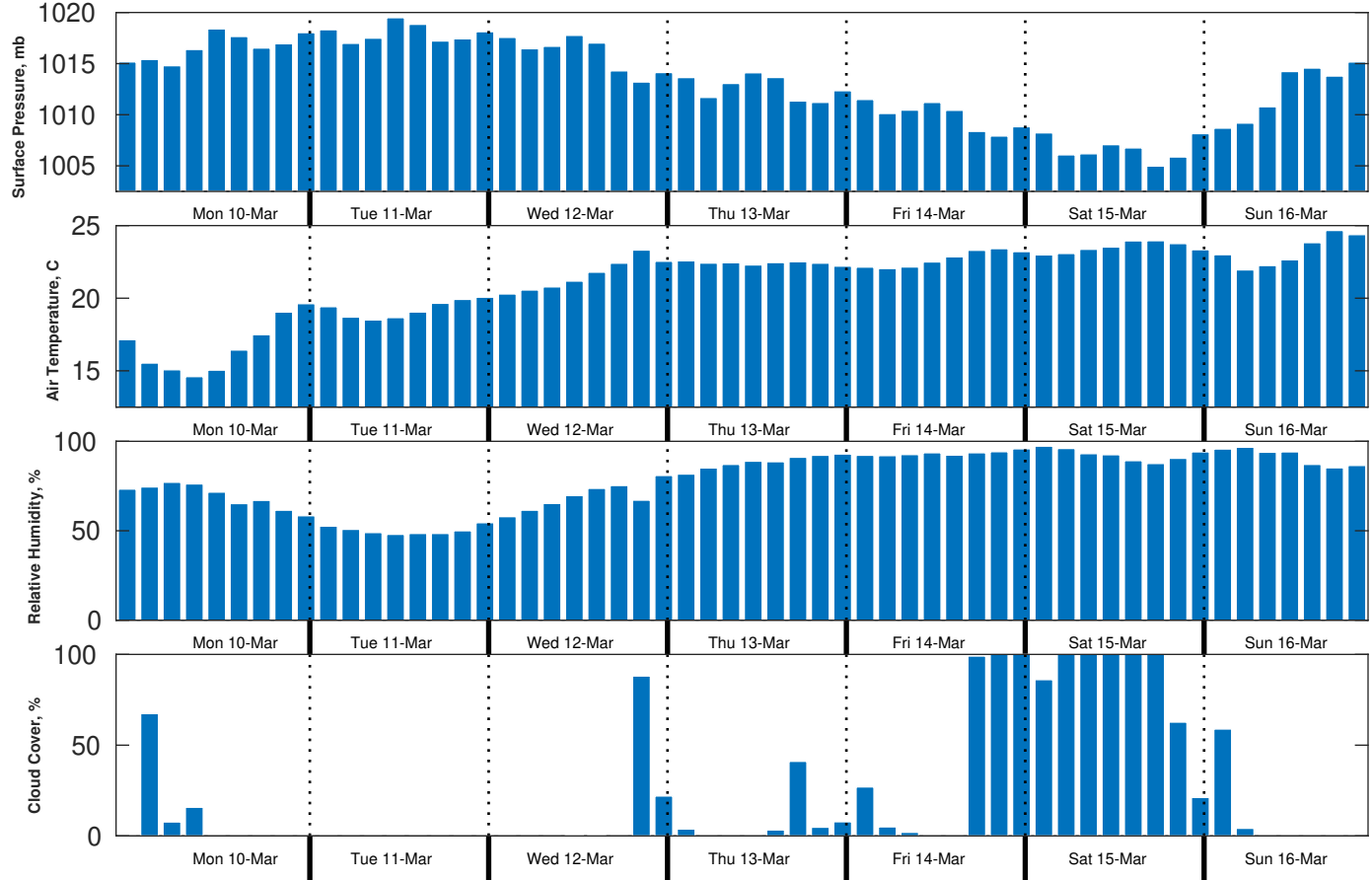
Friday Night

Winds: N, 15-20 kts.
Waves: N, 4-5 feet, 5-6 sec.
No currents available.

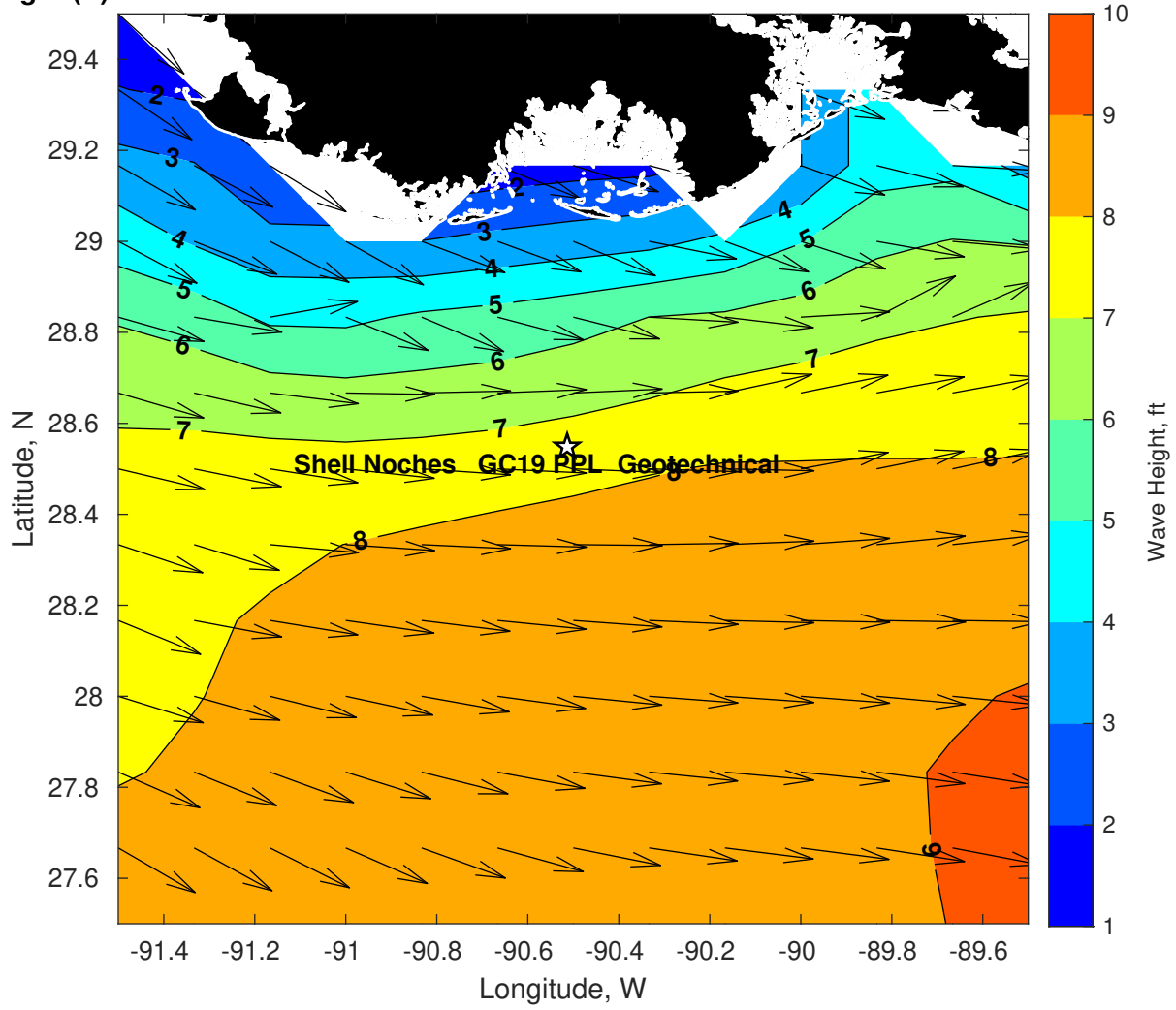
Wind & Wave Forecast for Shell Noches GC19 PPL Geotechnical from 09-Mar-2025 20:00:00 to 25-Mar-2025 20:00:00



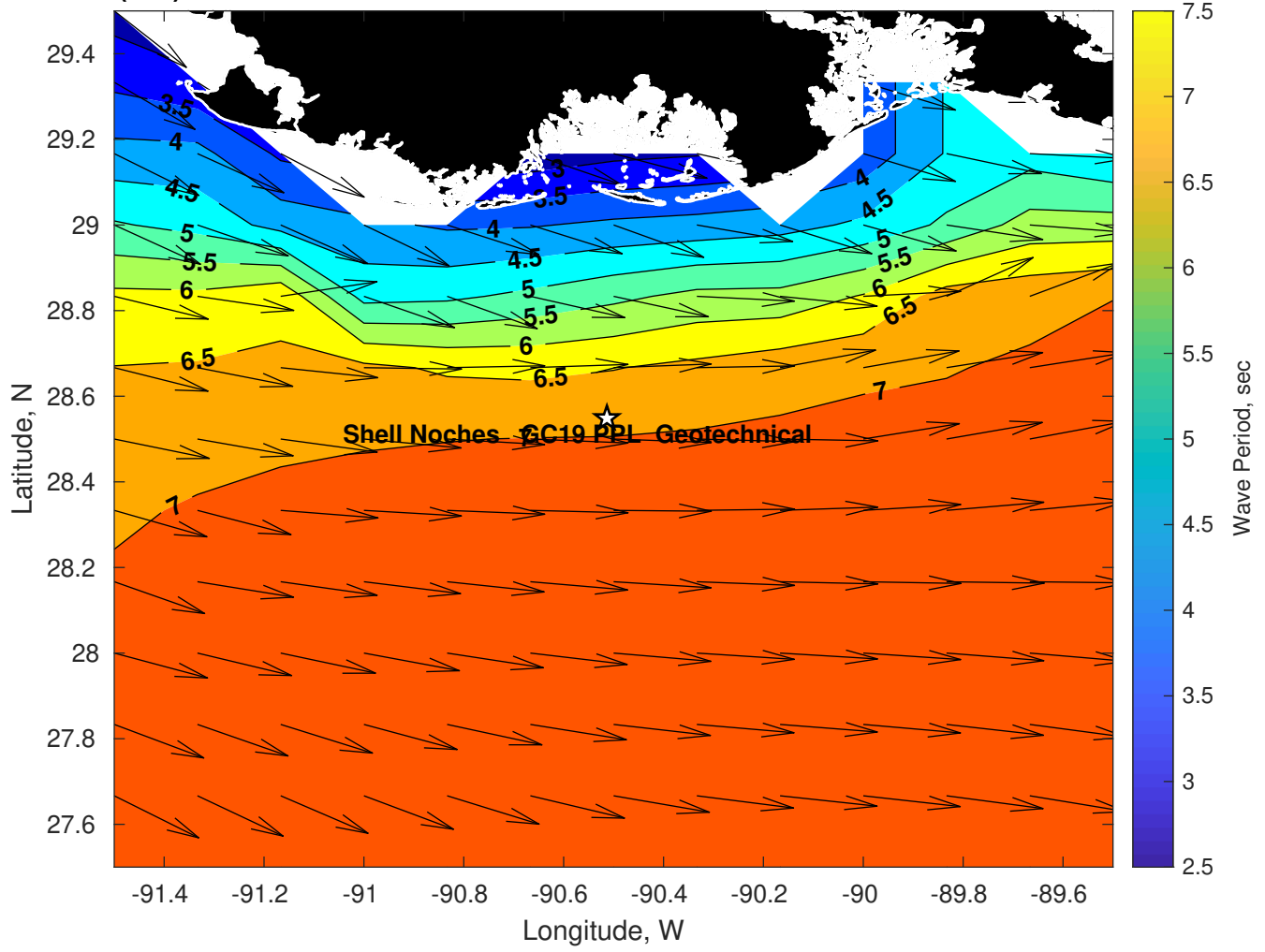
Met Forecast for Shell Noches GC19 PPL Geotechnical from 10-Mar-2025 00:00:00 to 17-Mar-2025 00:00:00



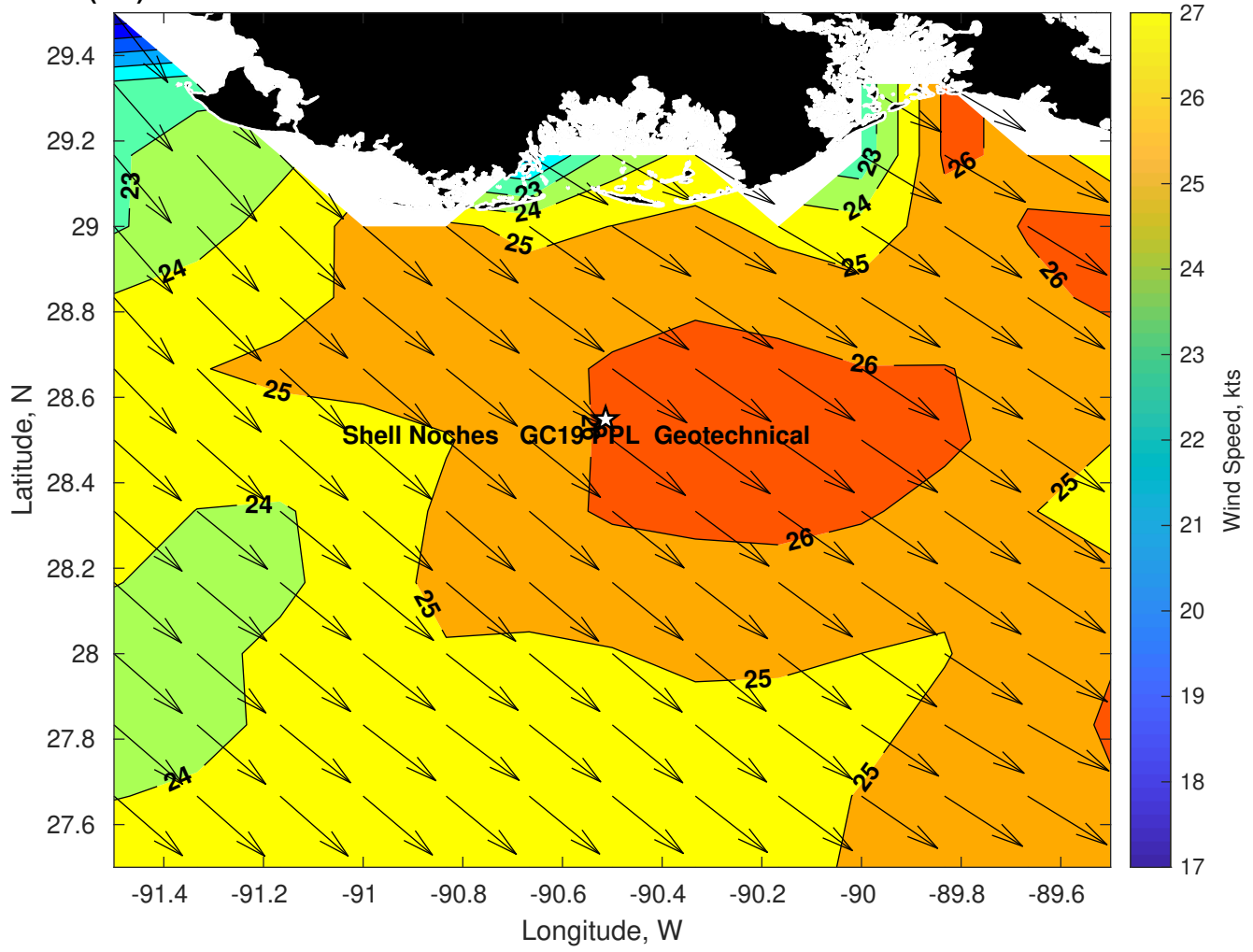
Wave Height (ft) for Shell Noches GC19 PPL Geotechnical at 10-Mar-2025 09:00:00



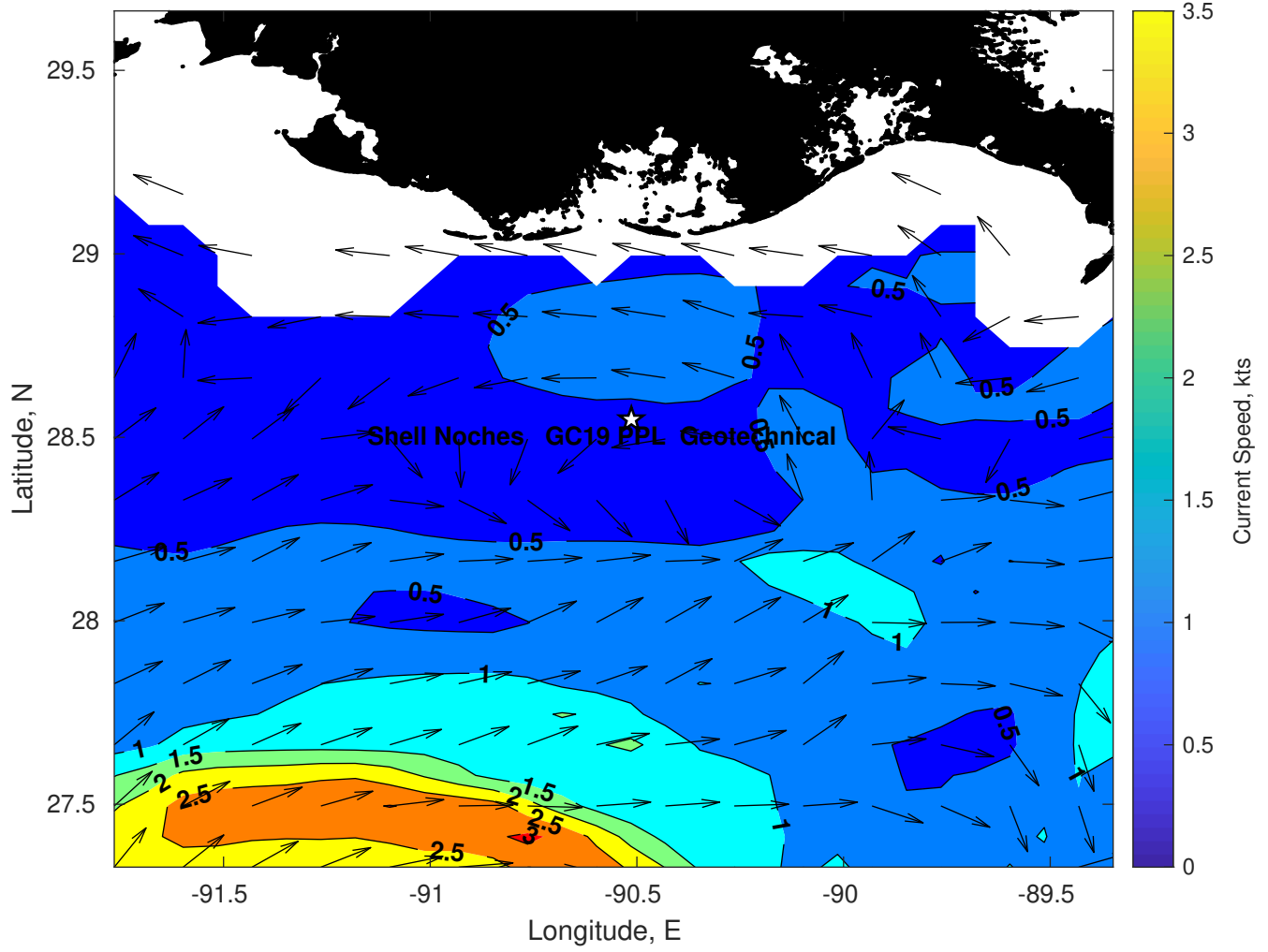
Wave Period (sec) for Shell Noches GC19 PPL Geotechnical at 10-Mar-2025 09:00:00



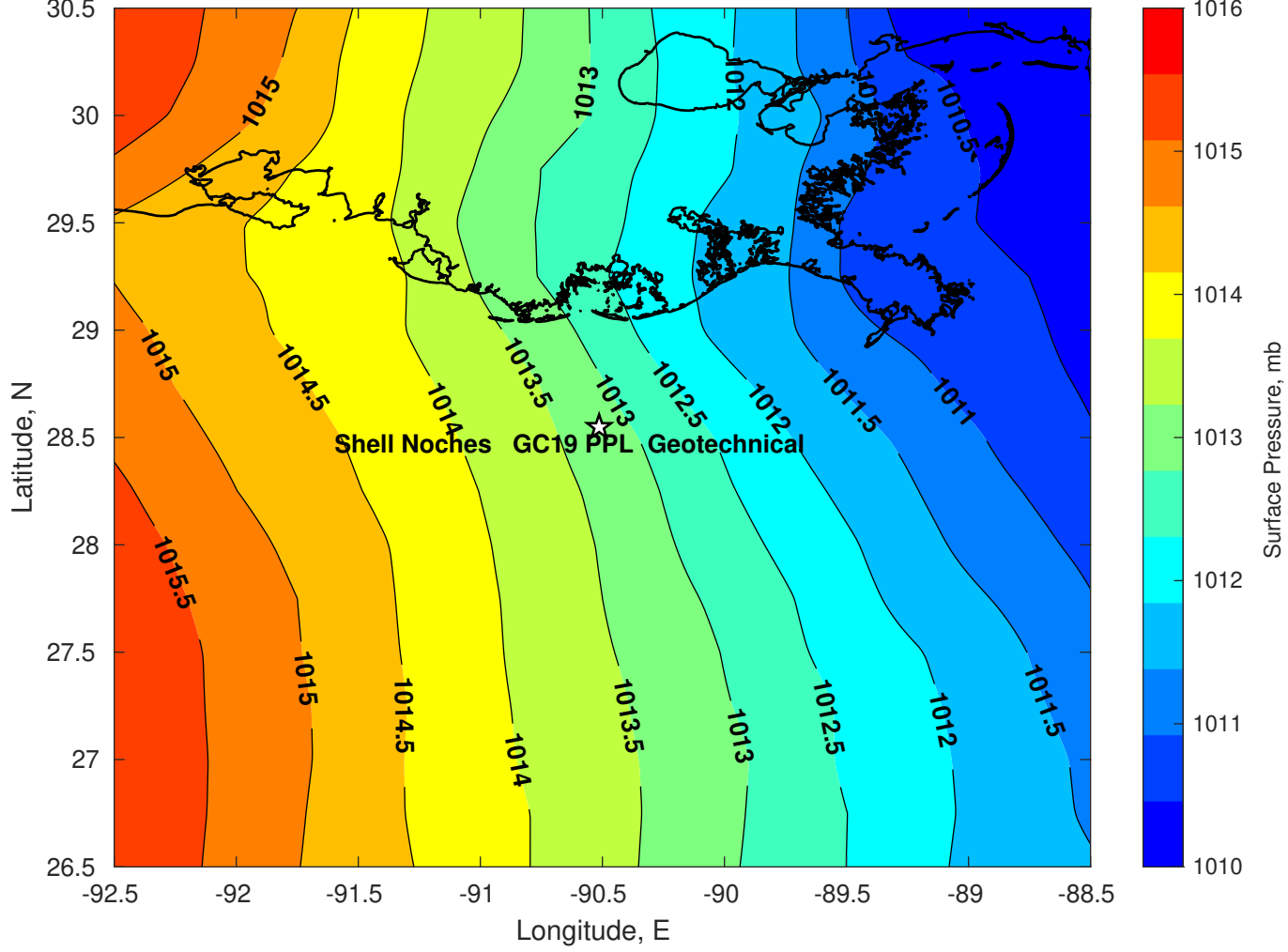
Winds (kts) for Shell Noches GC19 PPL Geotechnical at 10-Mar-2025 09:00:00



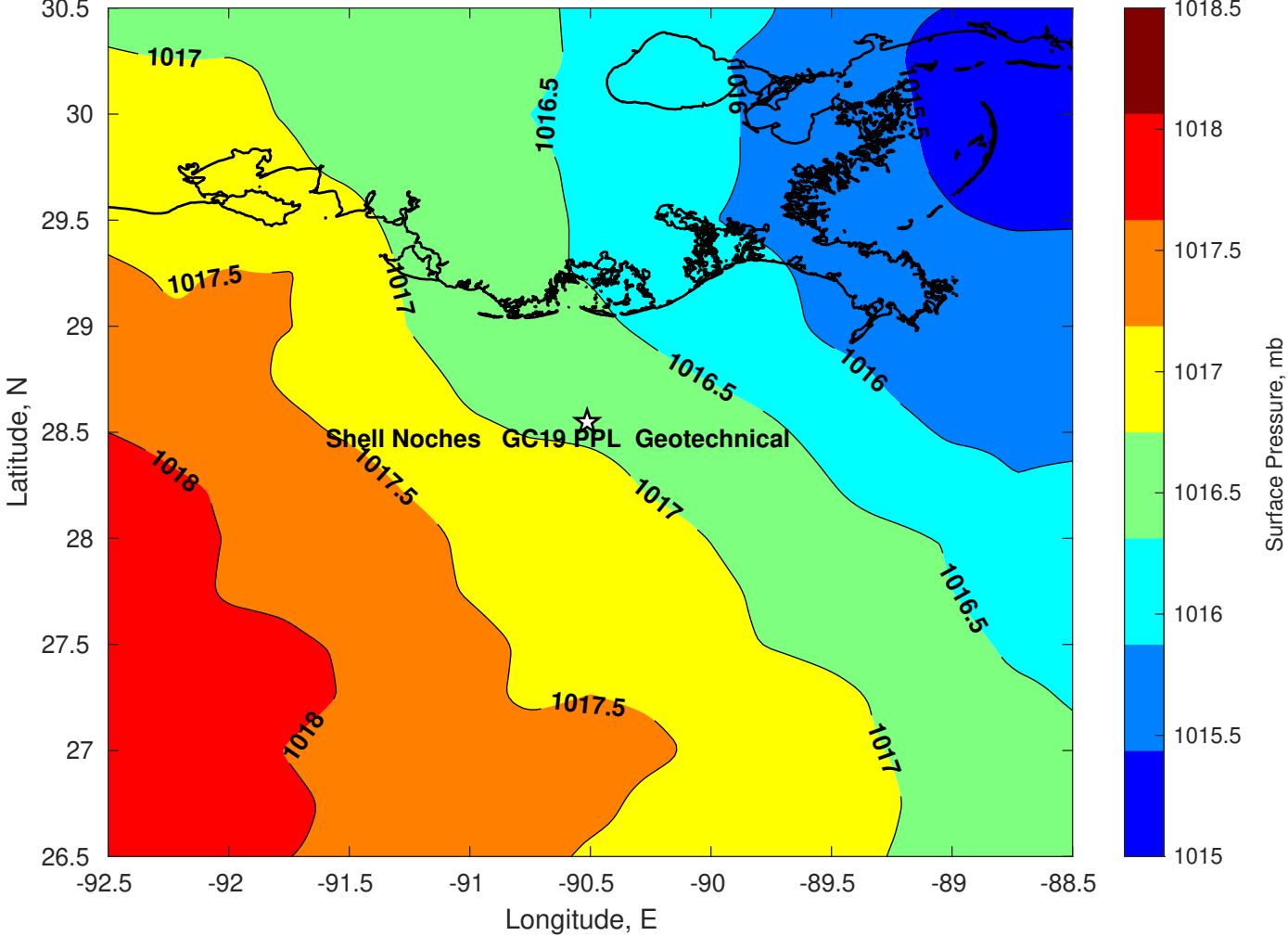
Surface Currents for Shell Noches GC19 PPL Geotechnical at 09-Mar-2025 00:00:00



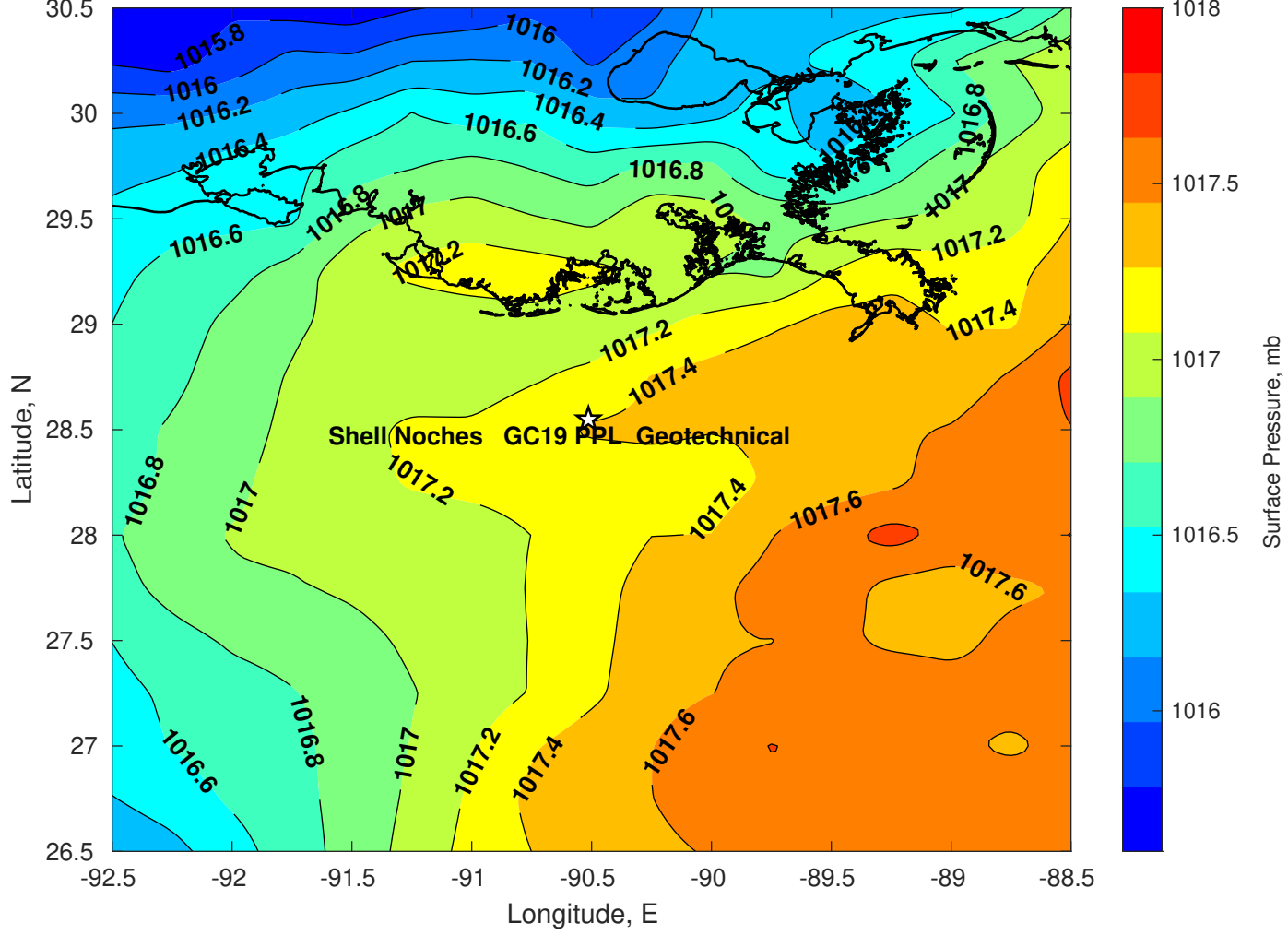
Surface Pressure (mb) for Shell Noches GC19 PPL Geotechnical at 10-Mar-2025 00:00:00



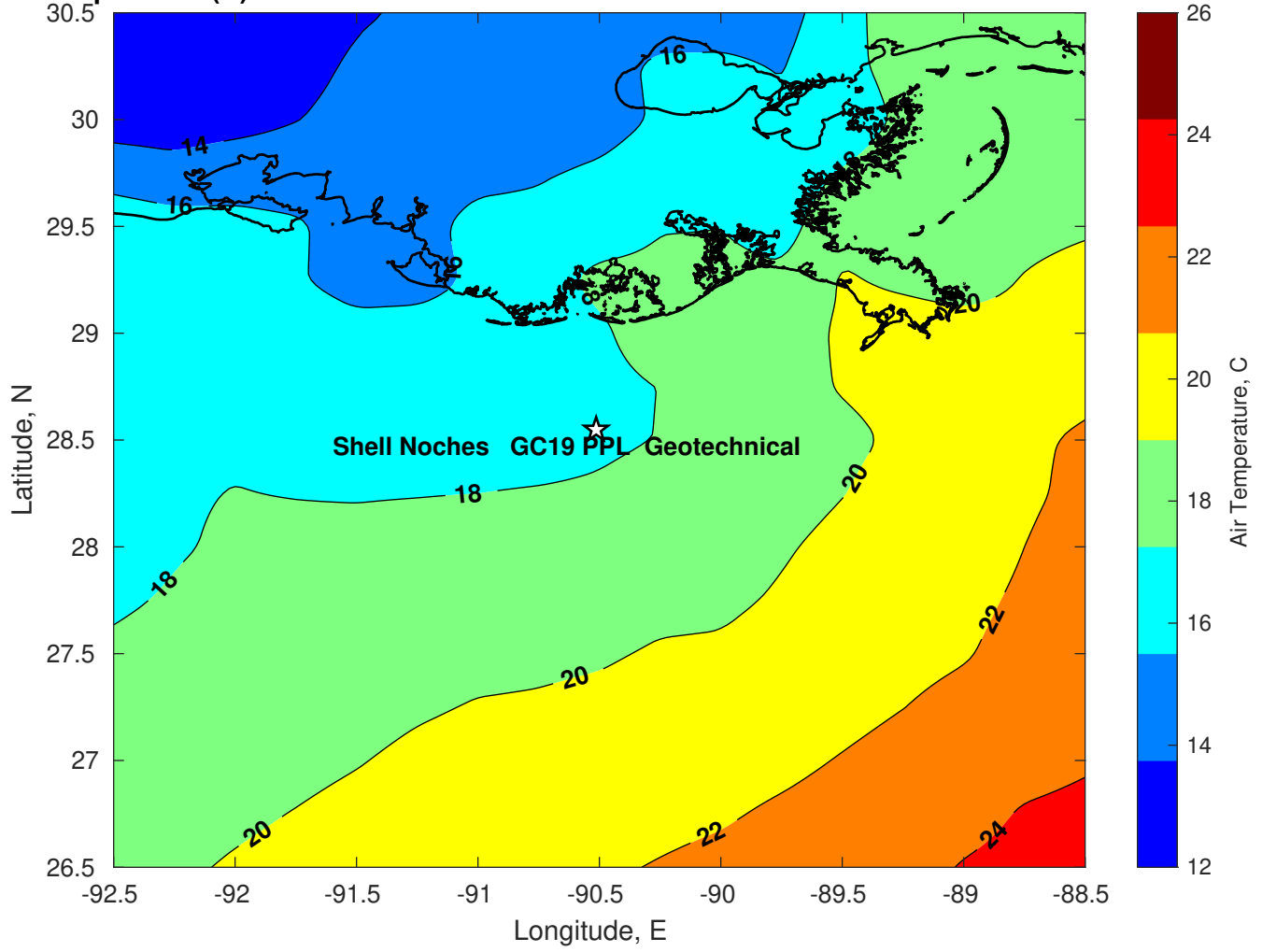
Surface Pressure (mb) for Shell Noches GC19 PPL Geotechnical at 11-Mar-2025 00:00:00



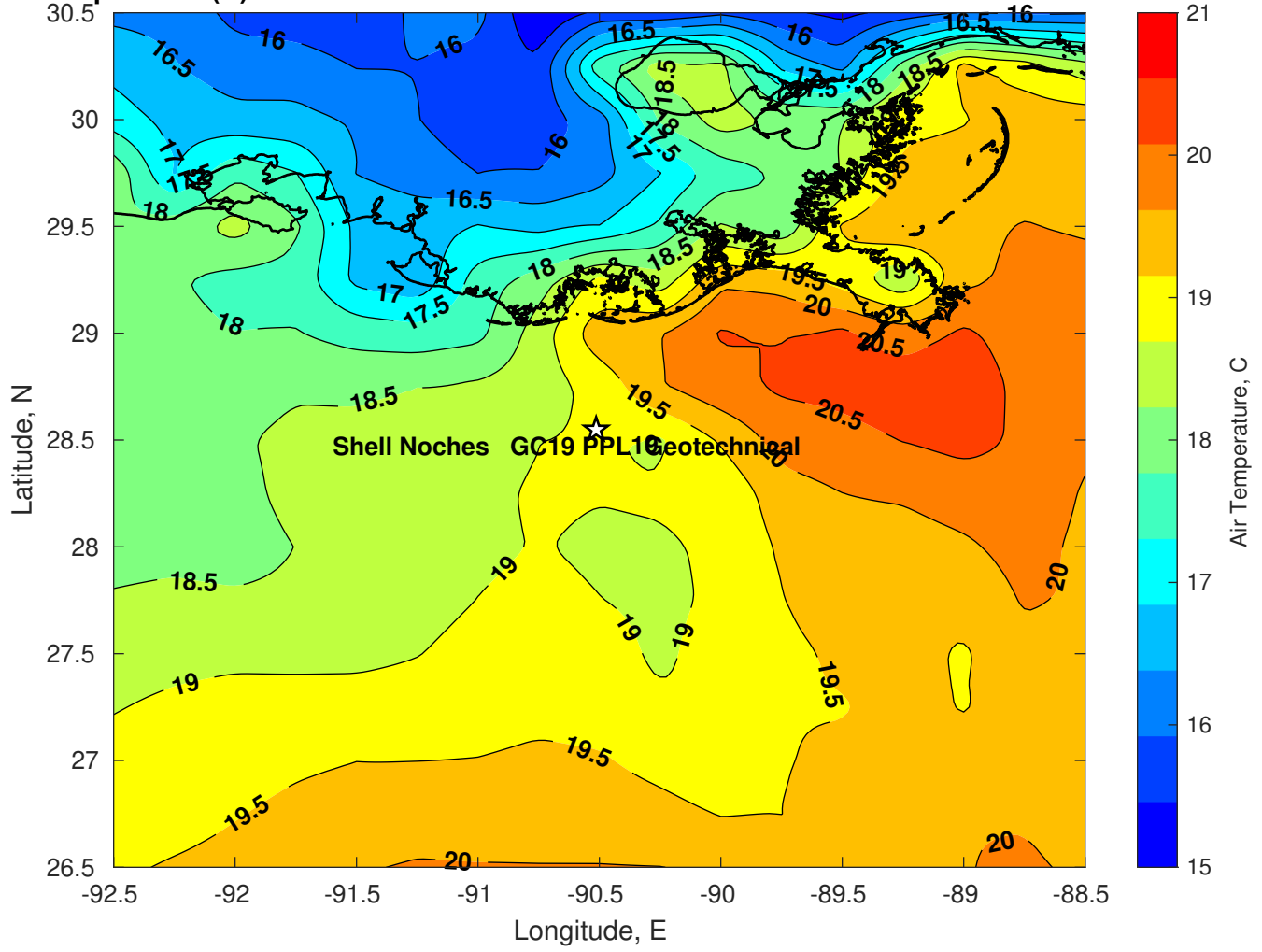
Surface Pressure (mb) for Shell Noches GC19 PPL Geotechnical at 12-Mar-2025 00:00:00



Air Temperature (C) for Shell Noches GC19 PPL Geotechnical at 10-Mar-2025



Air Temperature (C) for Shell Noches GC19 PPL Geotechnical at 10-Mar-2025



Air Temperature (C) for Shell Noches GC19 PPL Geotechnical at 10-Mar-2025

