

\*\*\*\*\*

Marine Weather Forecast for CSA (ONHYM) PPL EBS - Cote d'Ivoire

Forecast valid as of 11-Mar-2025 0800 GMT

\*\*\*\*\*

All times are local.

Today

Winds: NW, 15-20 kts.

Waves: N, 3-4 feet, 10-11 sec.

No currents available.

Tonight

Winds: NW, 10-15 kts.

Waves: N, 3-4 feet, 9-10 sec.

No currents available.

Wednesday

Winds: NW, 15-20 kts.

Waves: N, 3-4 feet, 9-10 sec.

No currents available.

Wednesday Night

Winds: NW, 15-20 kts.

Waves: N, 3-4 feet, 15-16 sec.

No currents available.

Thursday

Winds: NW, 10-15 kts.

Waves: N, 3-4 feet, 14-15 sec.

No currents available.

Thursday Night

Winds: NW, 15-20 kts.

Waves: N, 4-5 feet, 13-14 sec.

No currents available.

Friday

Winds: N, 5-10 kts.

Waves: N, 3-4 feet, 12-13 sec.

No currents available.

Friday Night

Winds: NW, 5-10 kts.

Waves: N, 3-4 feet, 11-12 sec.

No currents available.

Saturday

Winds: N, 10-15 kts.

Waves: N, 3-4 feet, 11-12 sec.

No currents available.

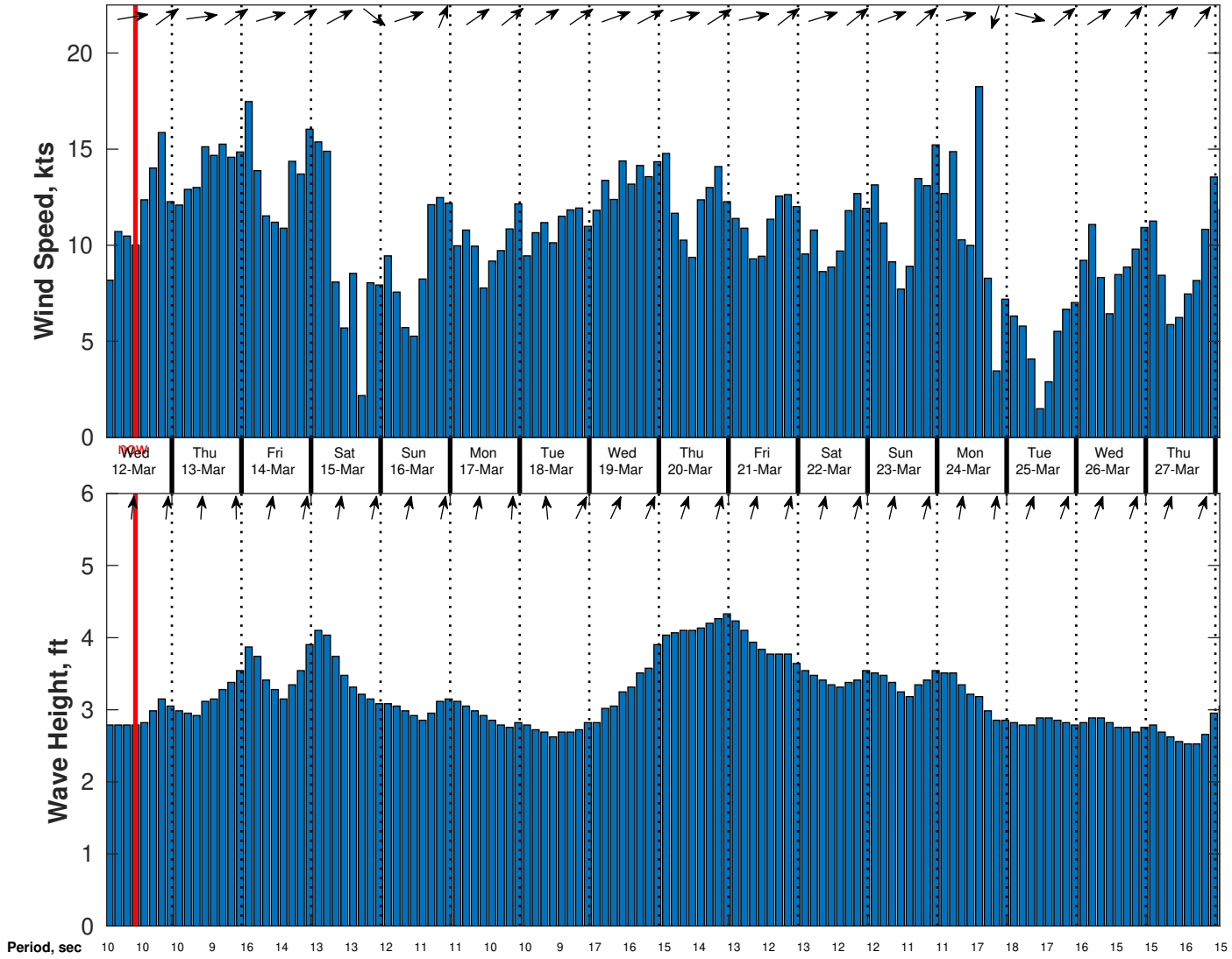
Saturday Night

Winds: NW, 10-15 kts.

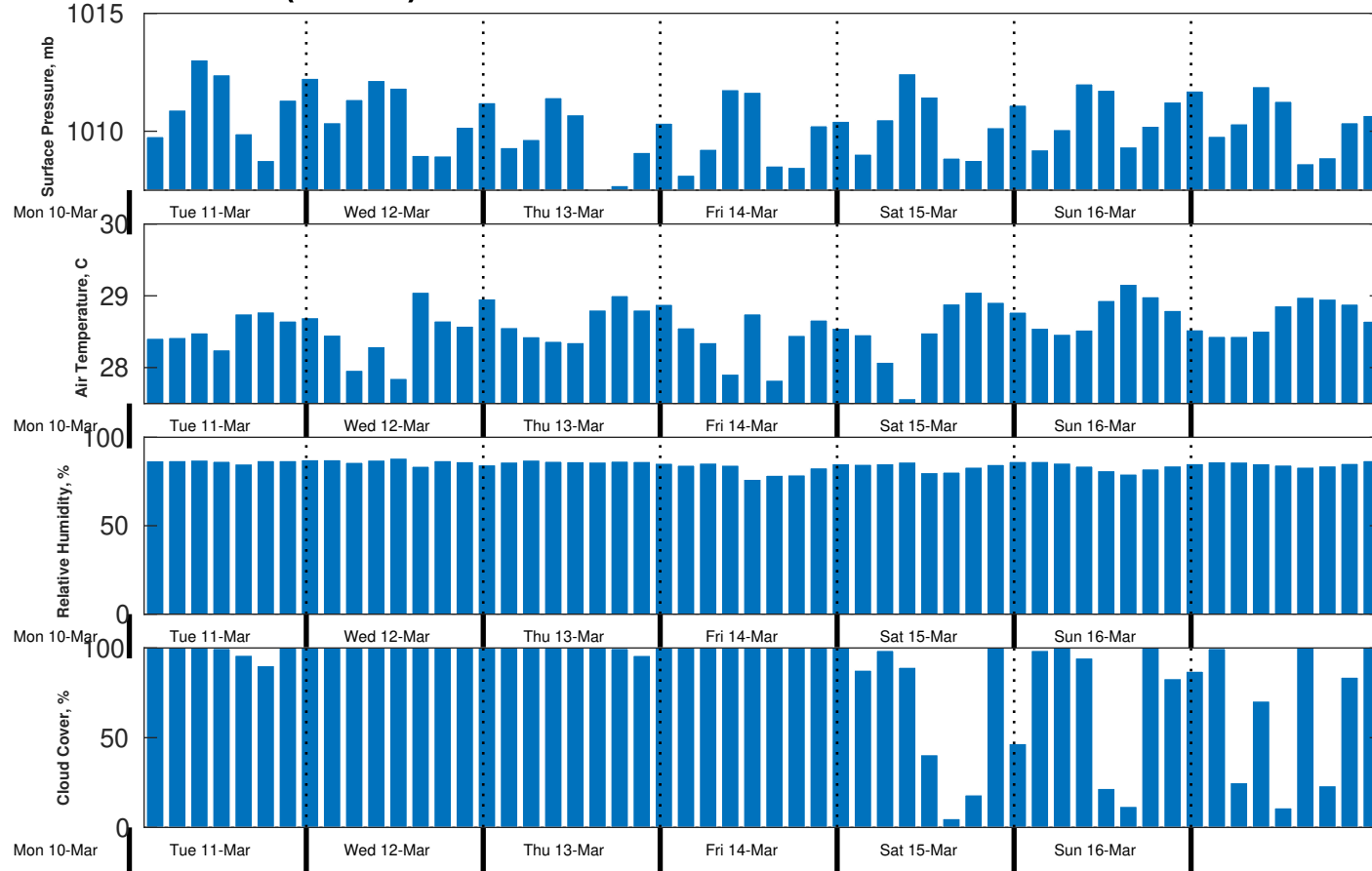
Waves: N, 3-4 feet, 10-11 sec.

No currents available.

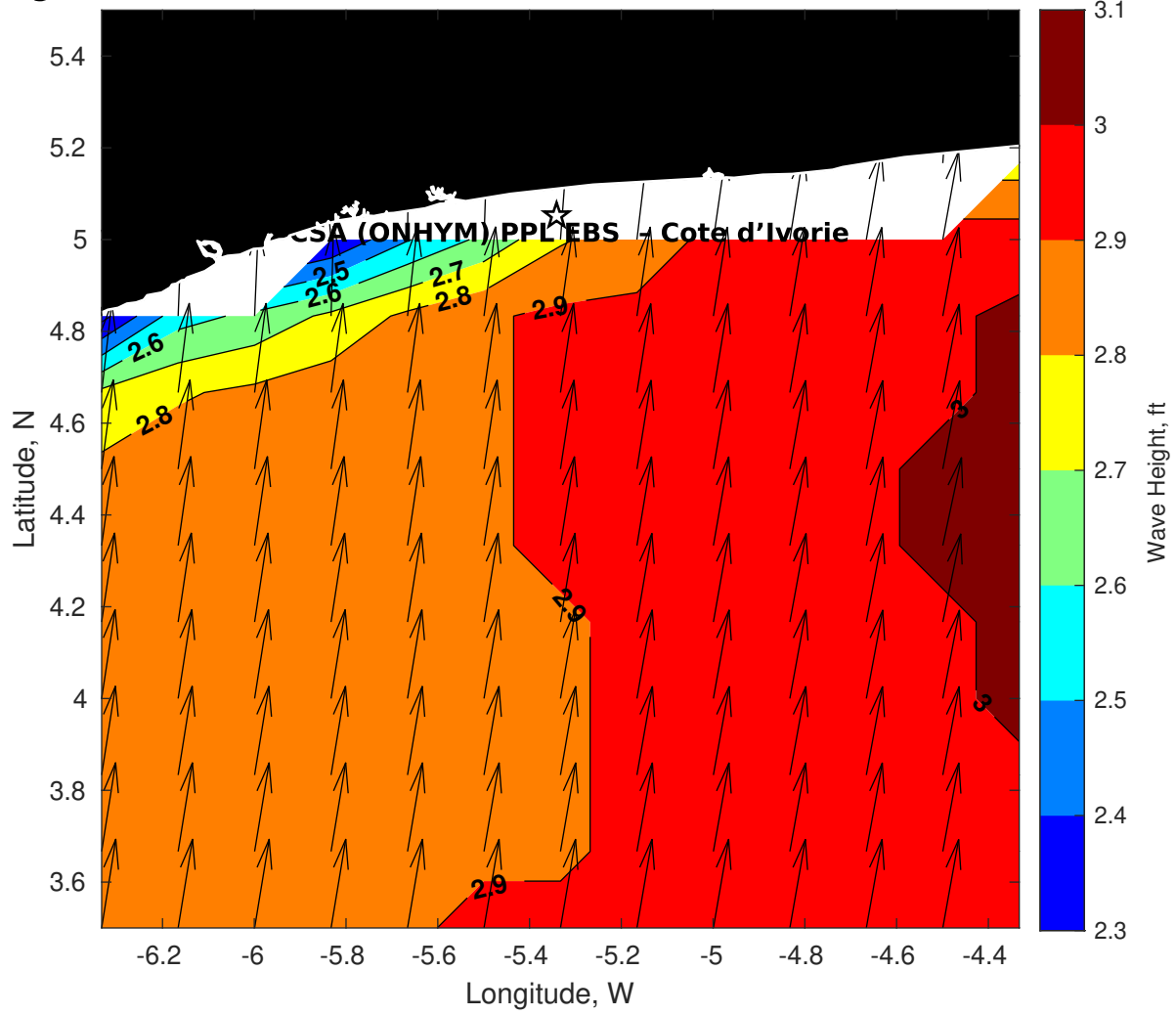
**Wind & Wave Forecast for CSA (ONHYM) PPL EBS - Cote d'Ivoire from 11-Mar-2025 01:00:00 to 27-Mar-2025 01:00:00**



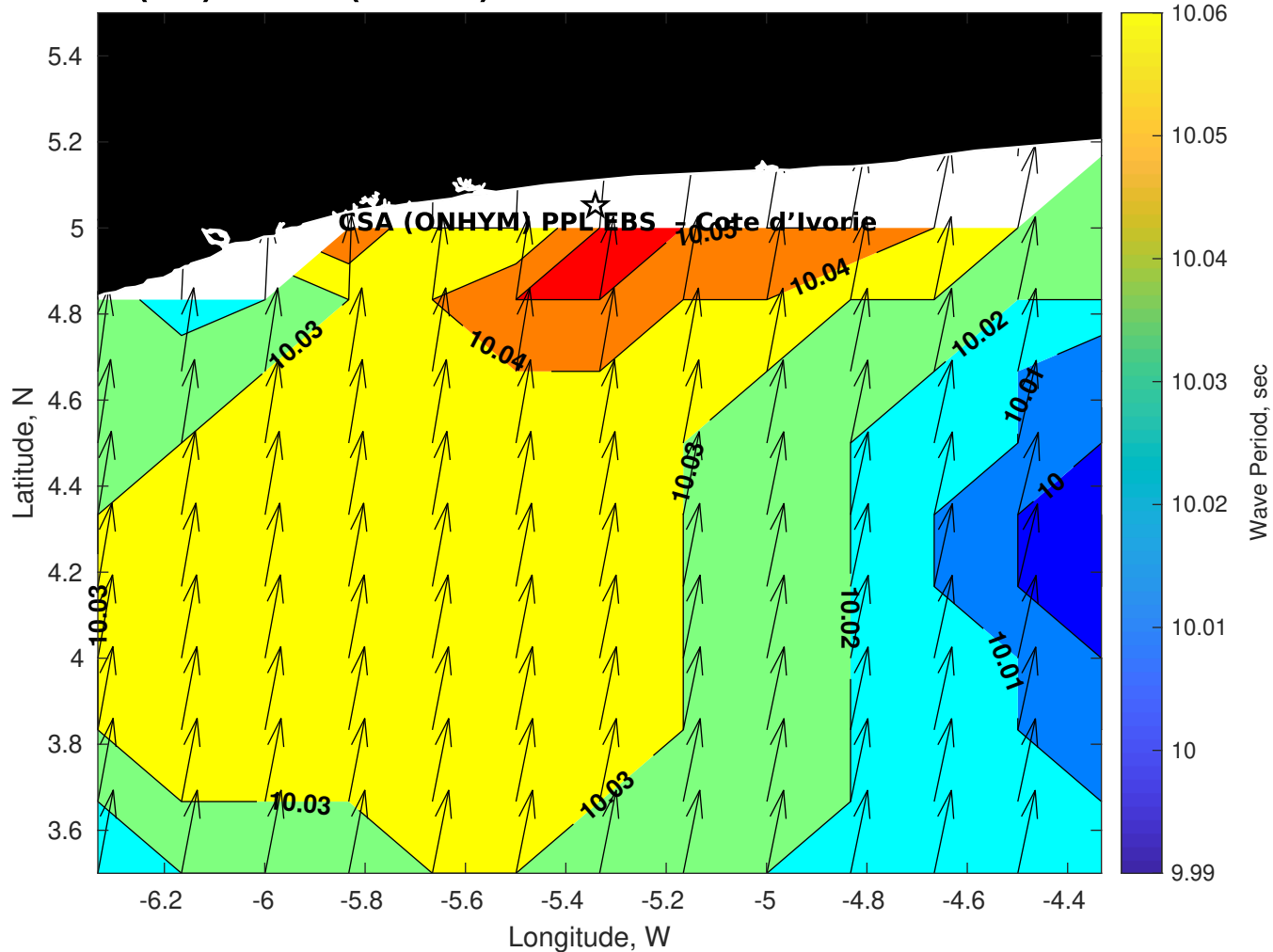
### Met Forecast for CSA (ONHYM) PPL EBS - Cote d'Ivoire from 11-Mar-2025 00:00:00 to 18-Mar-2025 00:00:00



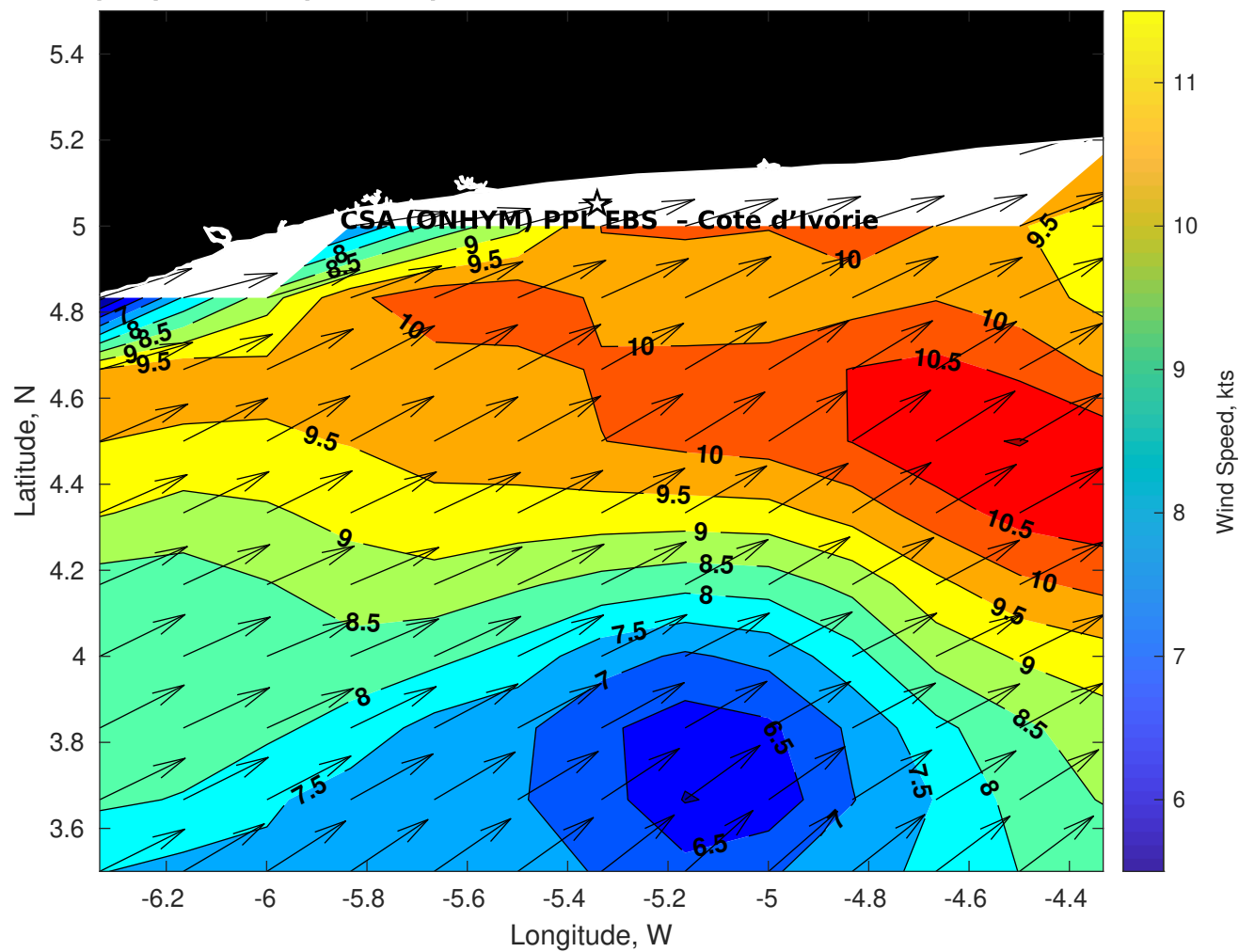
**Wave Height (ft) for CSA (ONHYM) PPL EBS - Cote d'Ivoire at 11-Mar-2025 09:00:00**



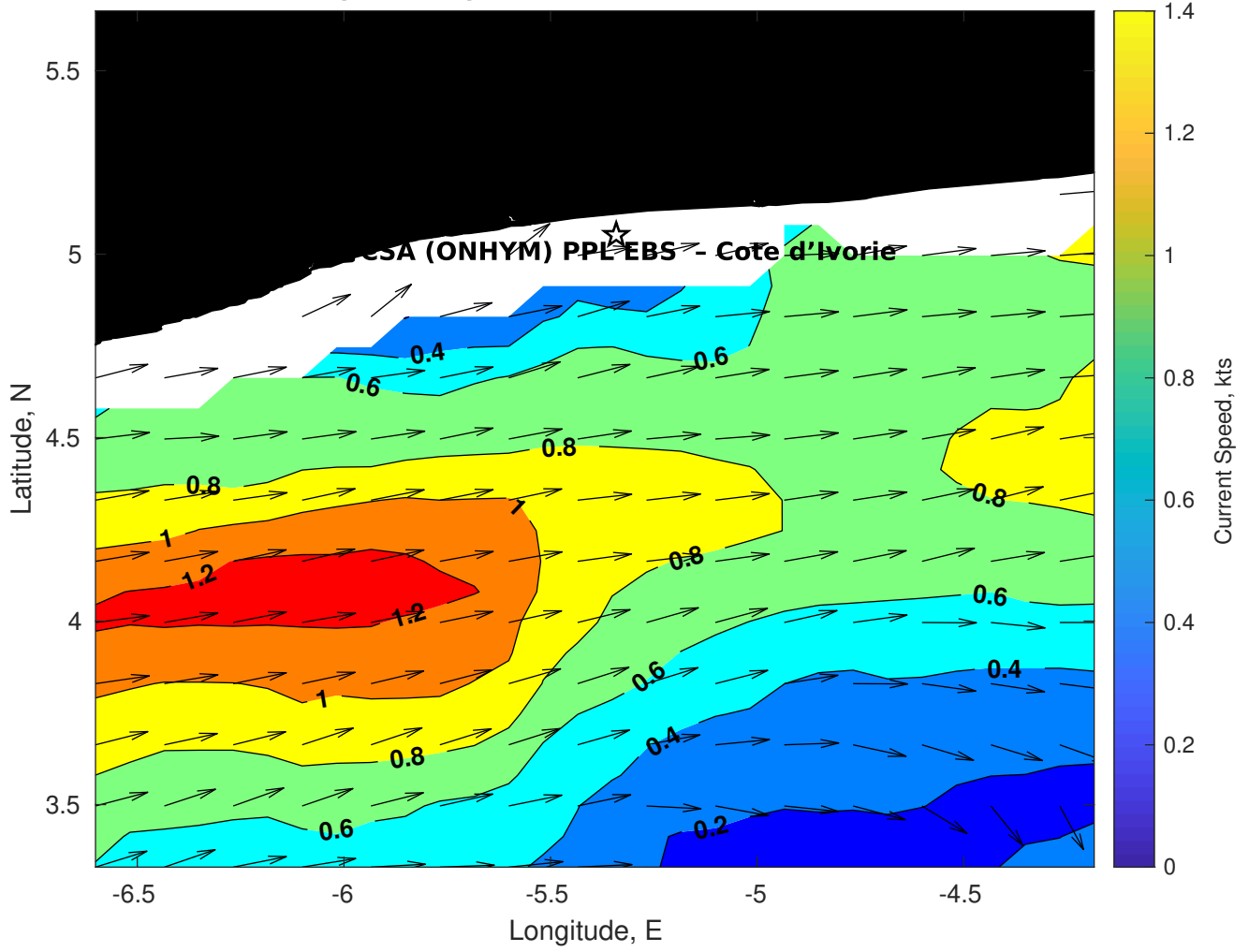
Wave Period (sec) for CSA (ONHYM) PPL EBS - Cote d'Ivoire at 11-Mar-2025 09:00:00



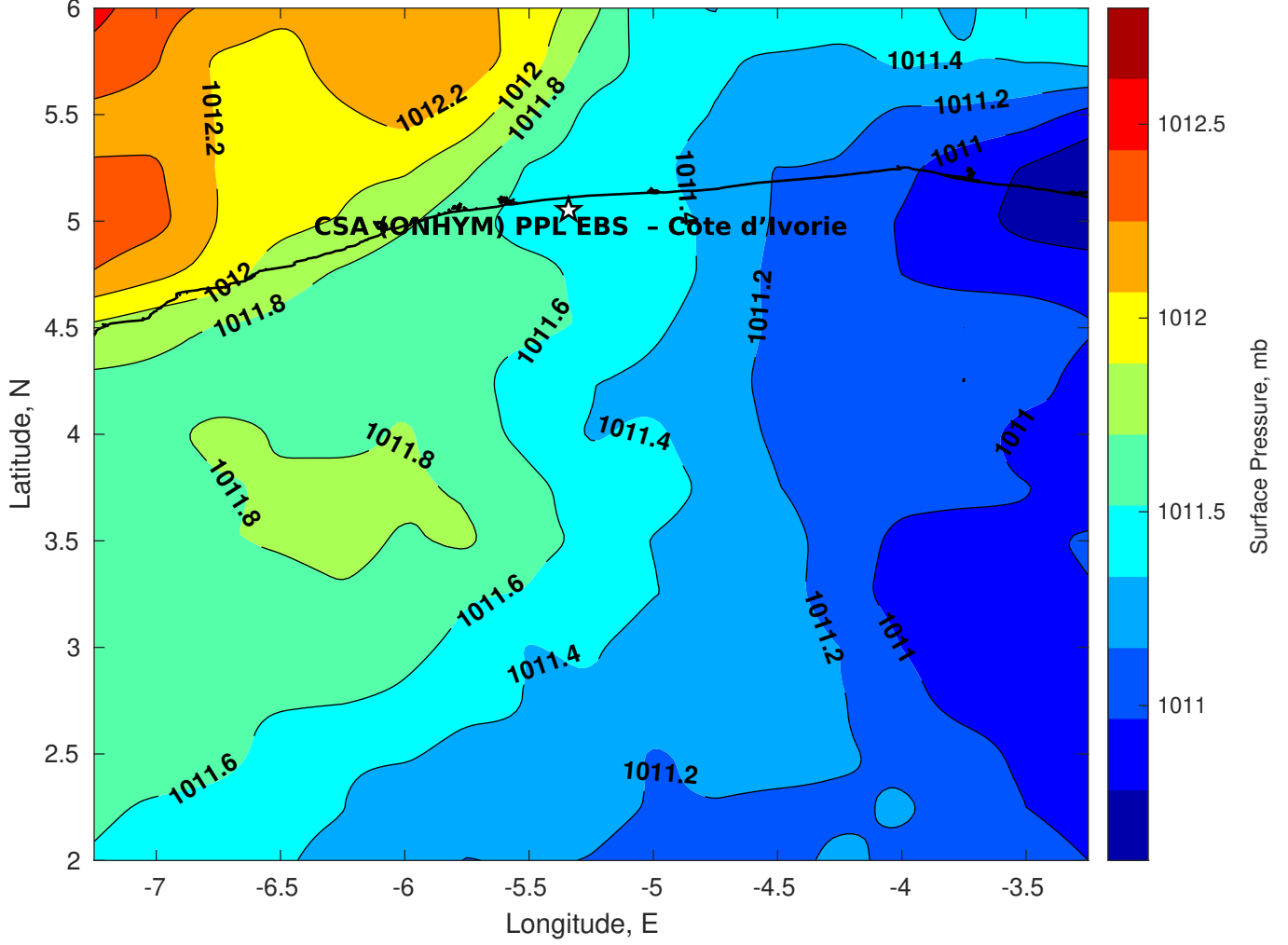
### Winds (kts) for CSA (ONHYM) PPL EBS - Cote d'Ivoire at 11-Mar-2025 09:00:00



Surface Currents for CSA (ONHYM) PPL EBS - Cote d'Ivoire at 10-Mar-2025 00:00:00

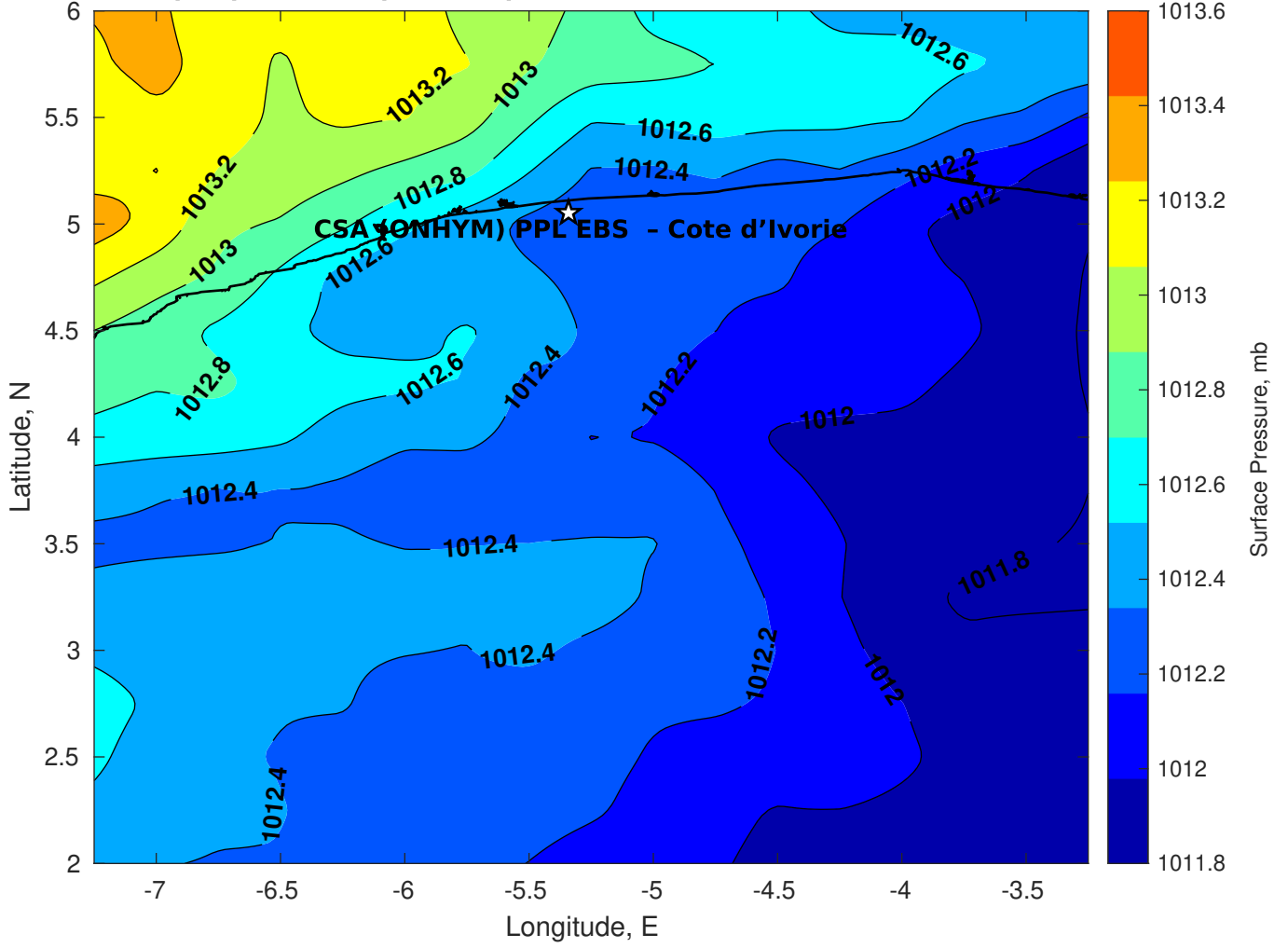


Surface Pressure (mb) for CSA (ONHYM) PPL EBS - Cote d'Ivoire at 11-Mar-2025 00:00:00

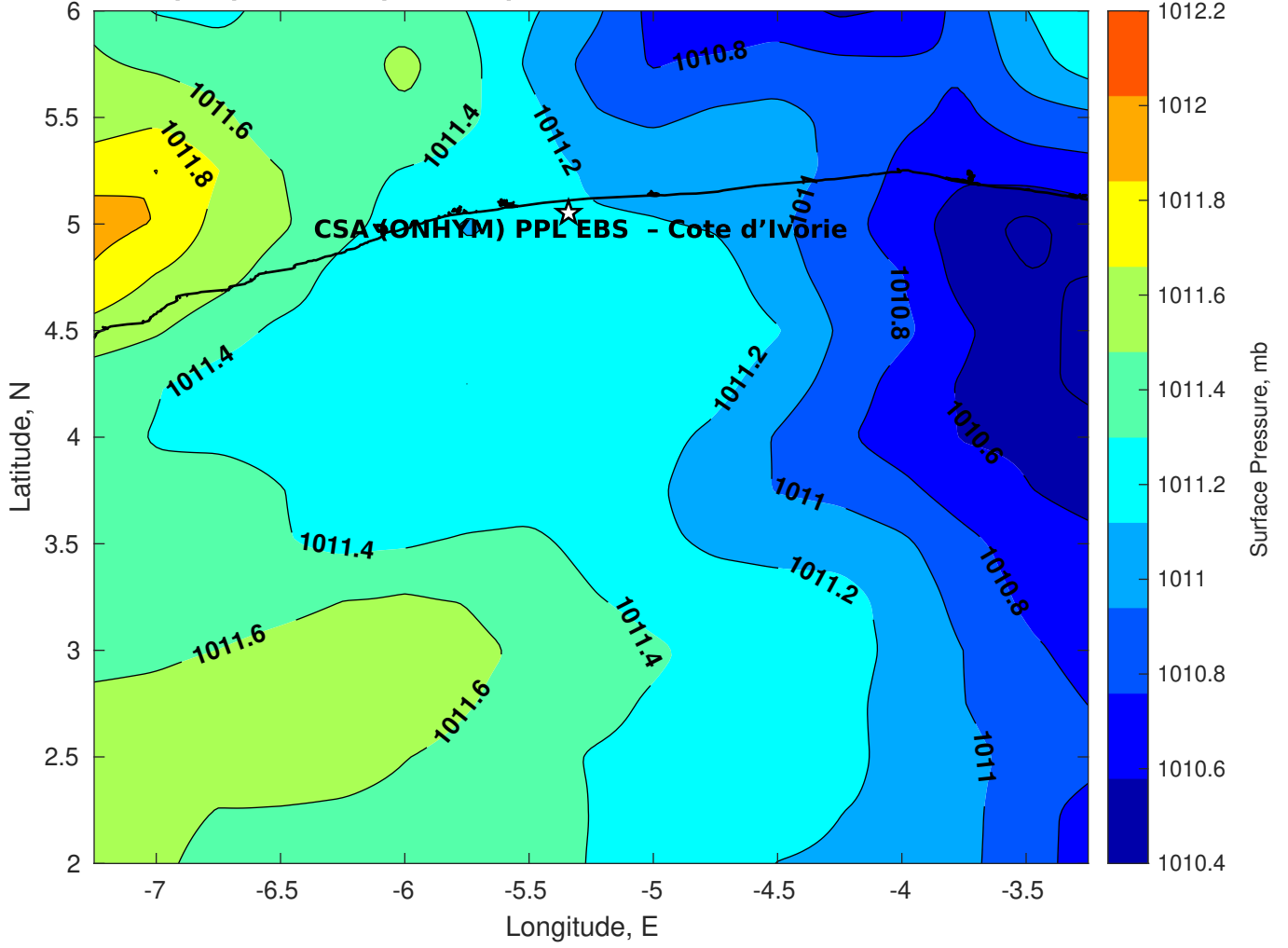




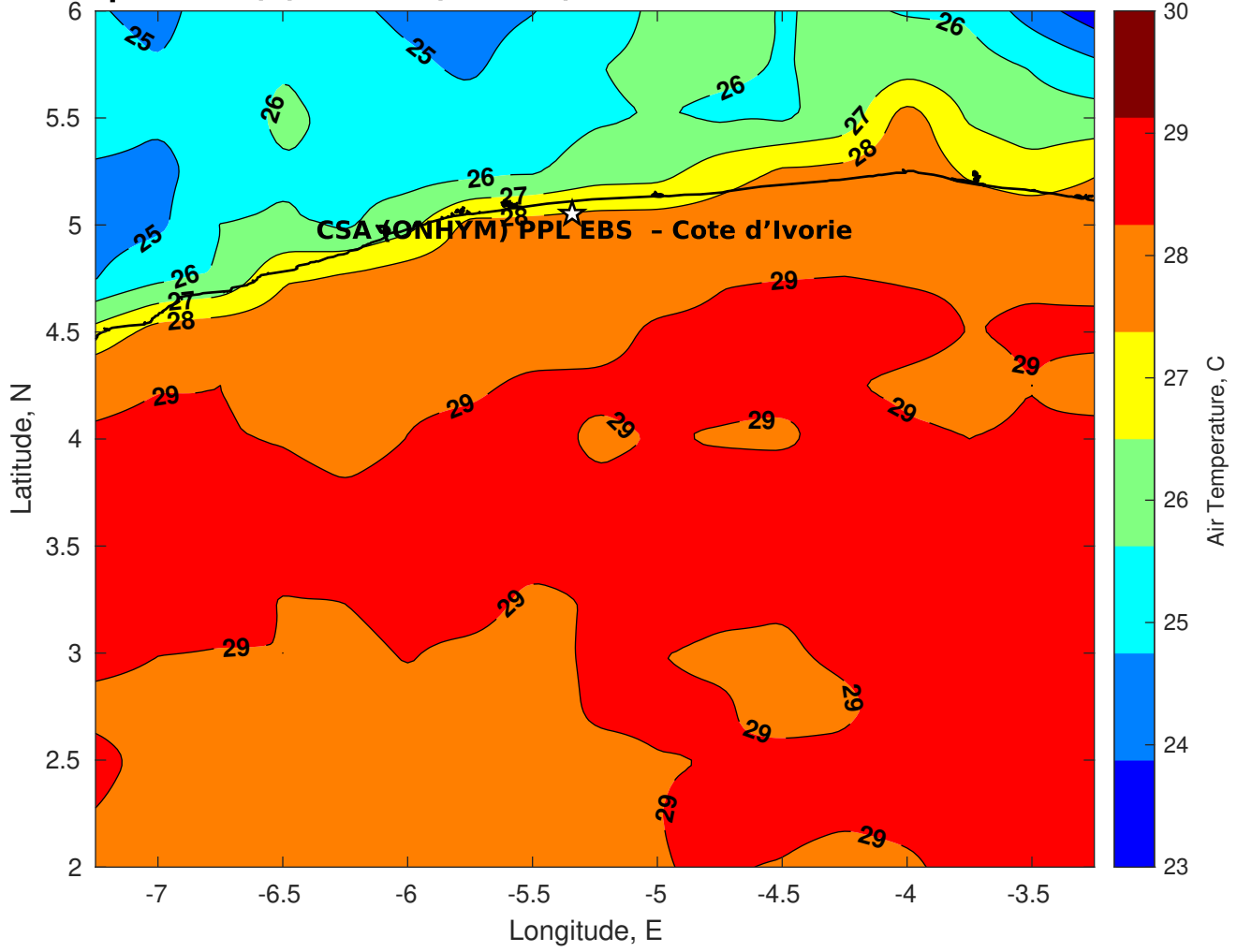
Surface Pressure (mb) for CSA (ONHYM) PPL EBS - Cote d'Ivoire at 12-Mar-2025 00:00:00



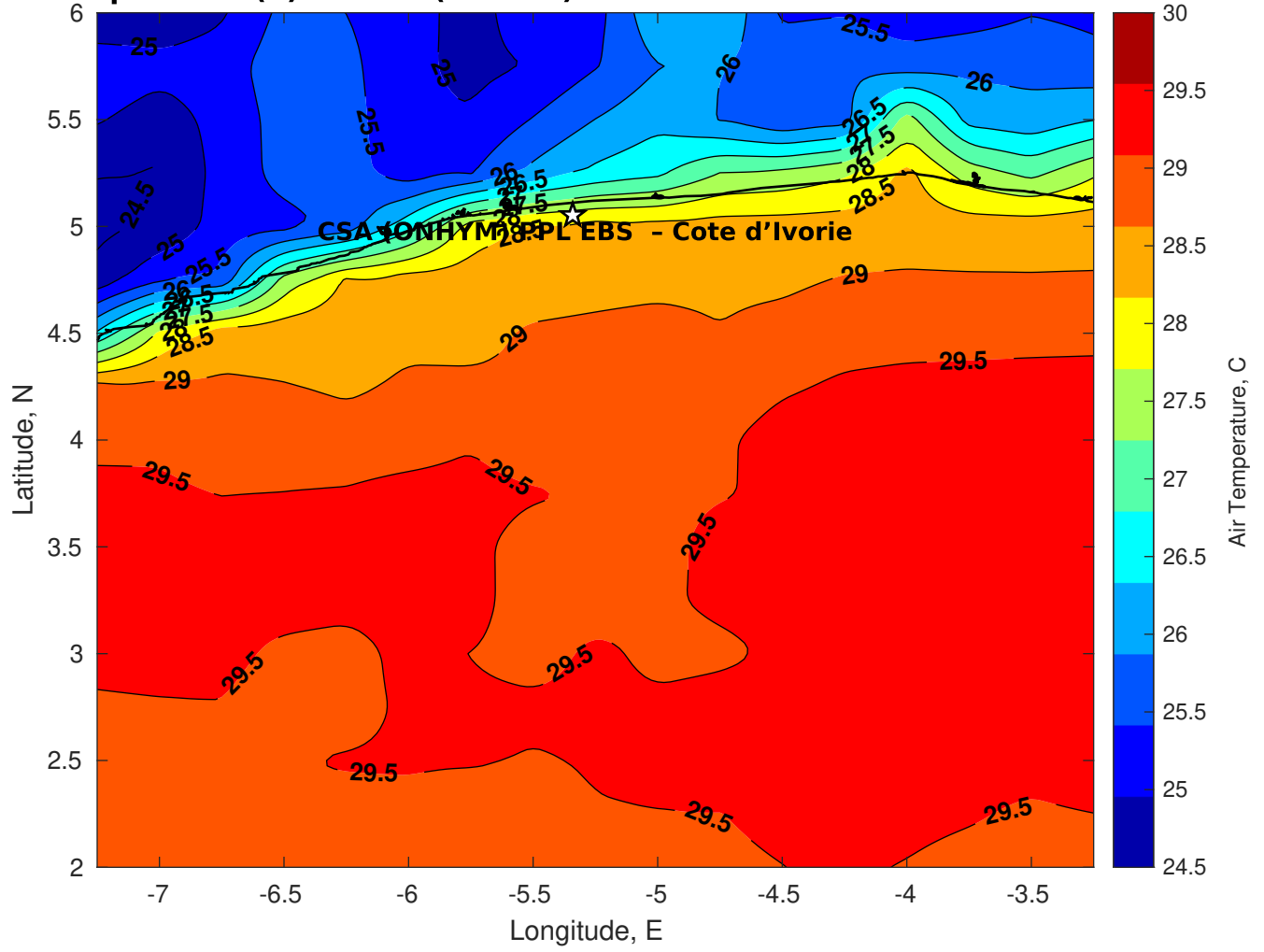
Surface Pressure (mb) for CSA (ONHYM) PPL EBS - Cote d'Ivoire at 13-Mar-2025 00:00:00



**Air Temperature (C) for CSA (ONHYM) PPL EBS - Cote d'Ivoire at 11-Mar-2025**



**Air Temperature (C) for CSA (ONHYM) PPL EBS - Cote d'Ivoire at 11-Mar-2025**



**Air Temperature (C) for CSA (ONHYM) PPL EBS - Cote d'Ivoire at 11-Mar-2025**

