
Marine Weather Forecast for CSA (ONHYM) PPL EBS - Western Sahara

Forecast valid as of 11-Mar-2025 0800 GMT

All times are local.

Today

Winds: N, 5-10 kts.

Waves: NW, 4-5 feet, 12-13 sec.

No currents available.

Tonight

Winds: N, 10-15 kts.

Waves: NW, 4-5 feet, 16-17 sec.

No currents available.

Wednesday

Winds: NE, 10-15 kts.

Waves: NW, 4-5 feet, 15-16 sec.

No currents available.

Wednesday Night

Winds: N, 10-15 kts.

Waves: NW, 4-5 feet, 13-14 sec.

No currents available.

Thursday

Winds: N, 10-15 kts.

Waves: NW, 5-6 feet, 13-14 sec.

No currents available.

Thursday Night

Winds: N, 10-15 kts.

Waves: NW, 7-8 feet, 13-14 sec.

No currents available.

Friday

Winds: N, 10-15 kts.

Waves: NW, 8-9 feet, 12-13 sec.

No currents available.

Friday Night

Winds: N, 10-15 kts.

Waves: NW, 6-7 feet, 12-13 sec.

No currents available.

Saturday

Winds: NE, 15-20 kts.

Waves: NW, 6-7 feet, 11-12 sec.

No currents available.

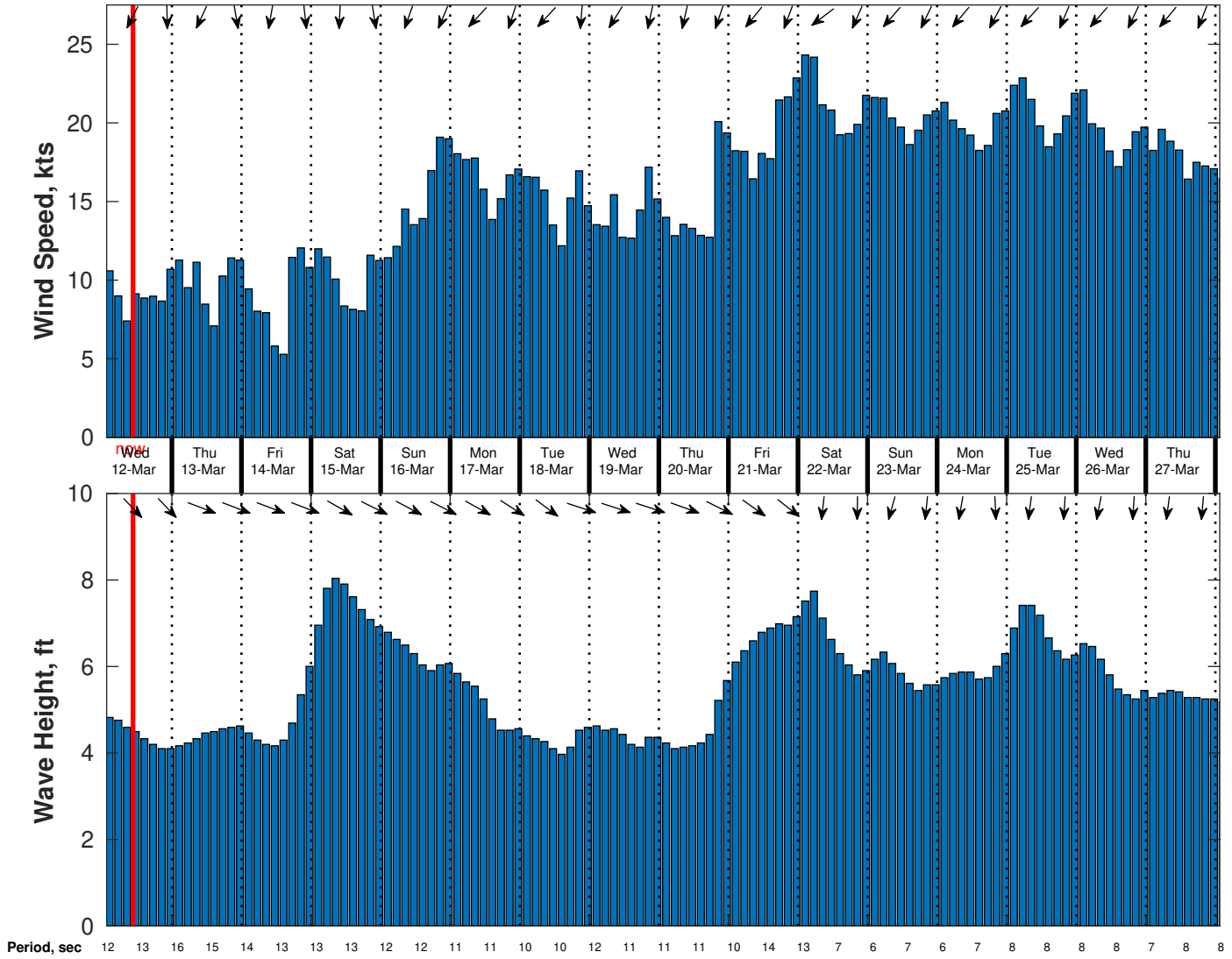
Saturday Night

Winds: NE, 15-20 kts.

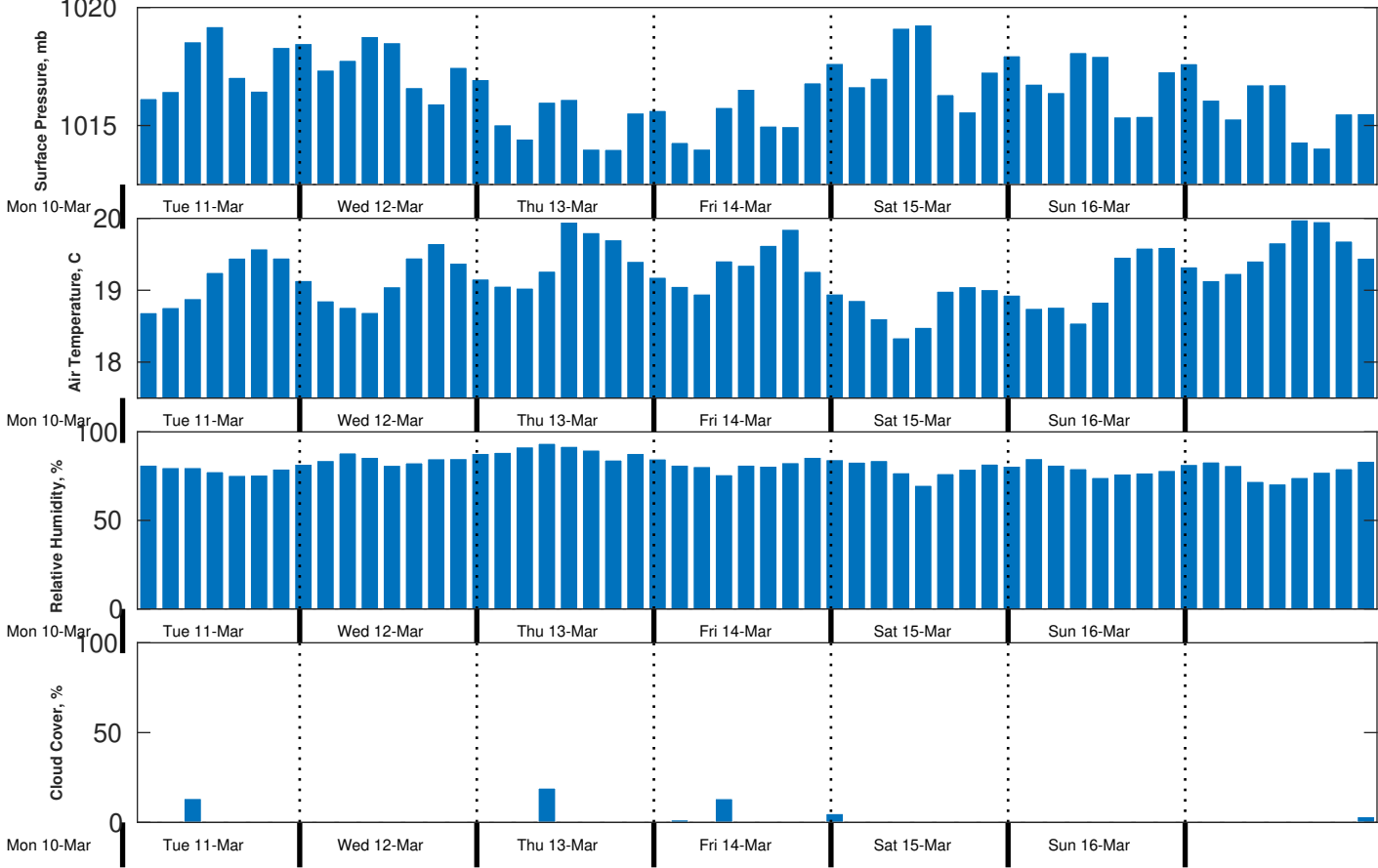
Waves: NW, 6-7 feet, 11-12 sec.

No currents available.

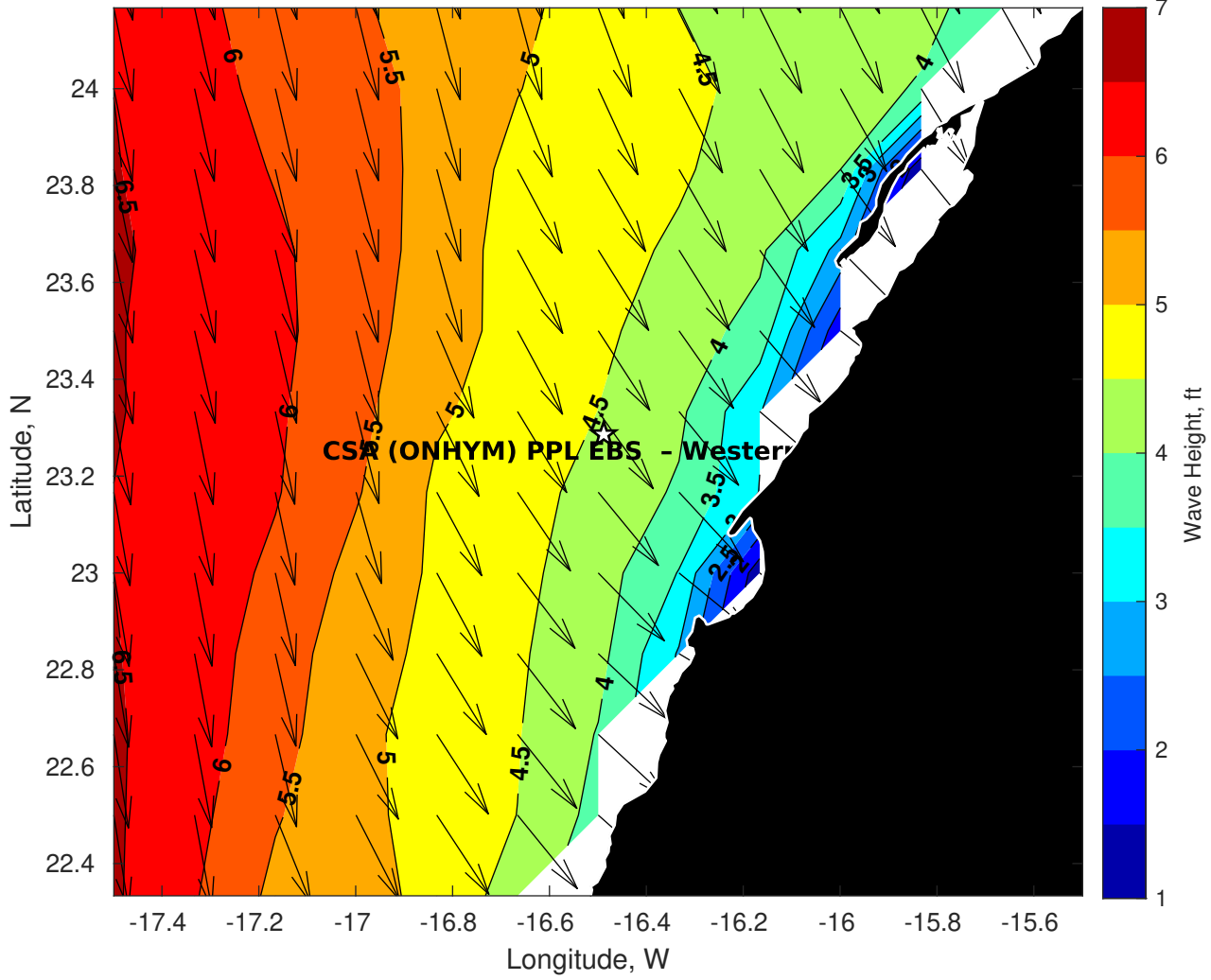
Wind & Wave Forecast for CSA (ONHYM) PPL EBS - Western Sahara from 11-Mar-2025 01:00:00 to 27-Mar-2025 01:00:00



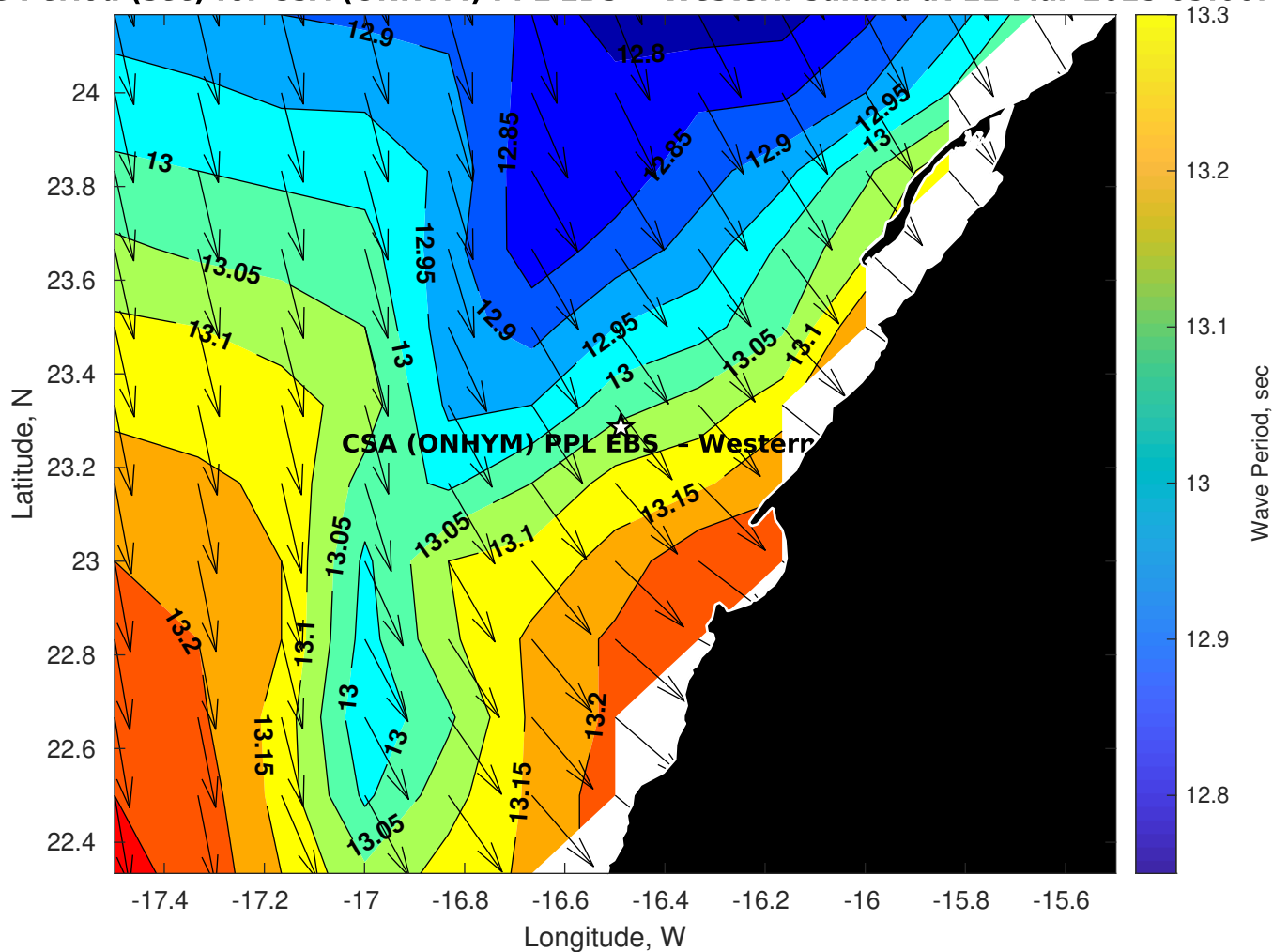
Met Forecast for CSA (ONHYM) PPL EBS - Western Sahara from 11-Mar-2025 00:00:00 to 18-Mar-2025 00:00:00



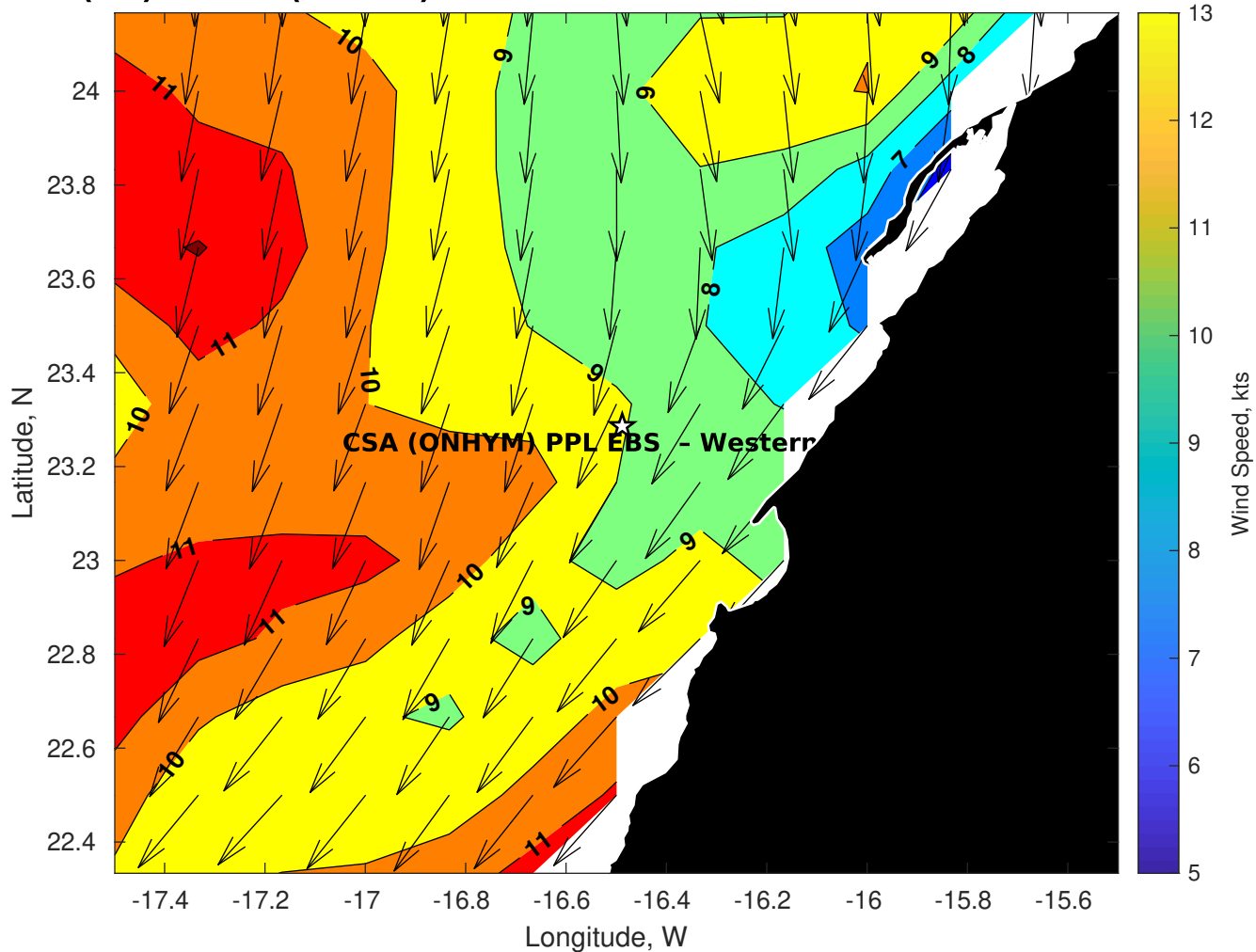
Wave Height (ft) for CSA (ONHYM) PPL EBS - Western Sahara at 11-Mar-2025 09:00:00



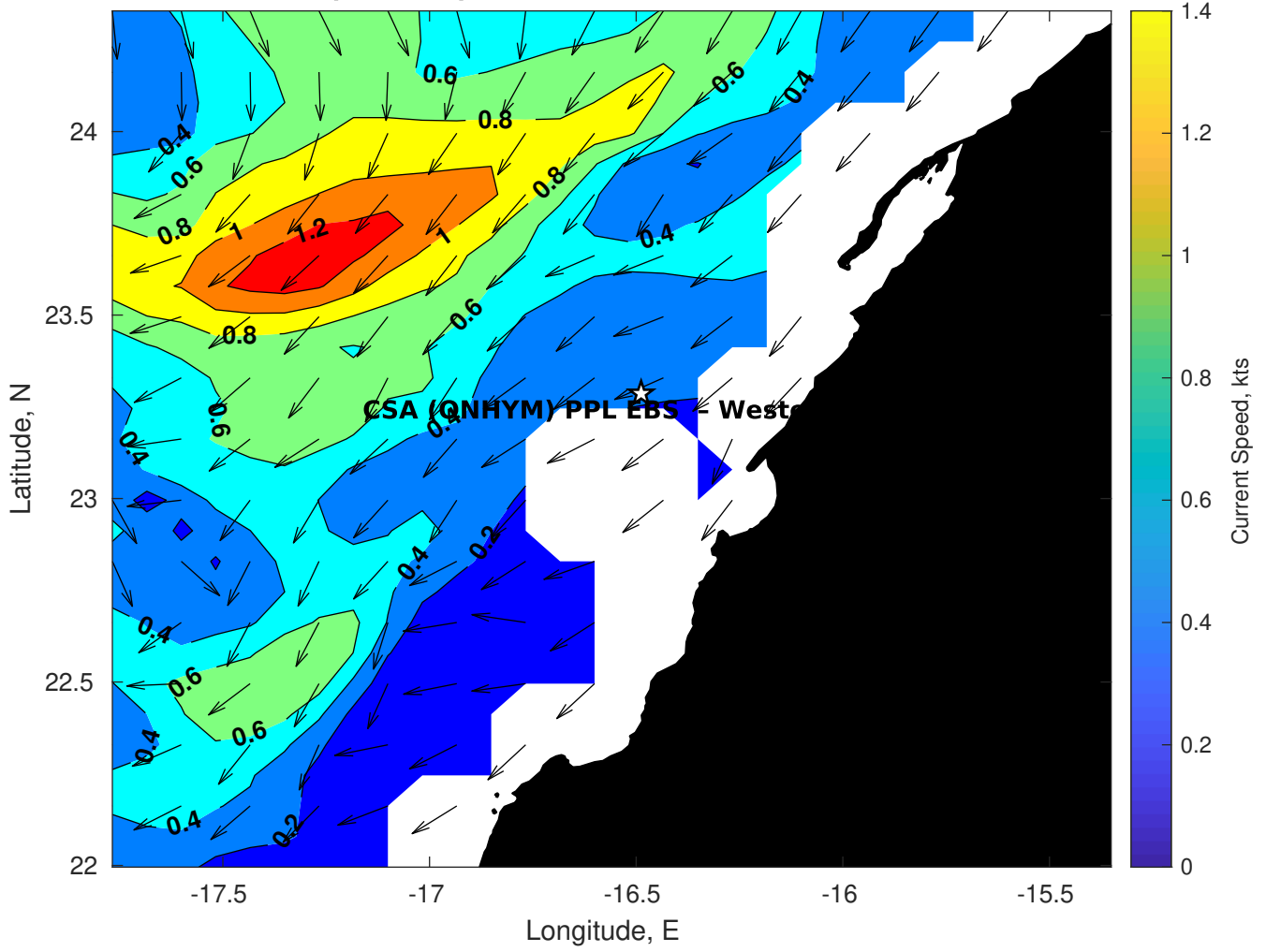
Wave Period (sec) for CSA (ONHYM) PPL EBS - Western Sahara at 11-Mar-2025 09:00:00



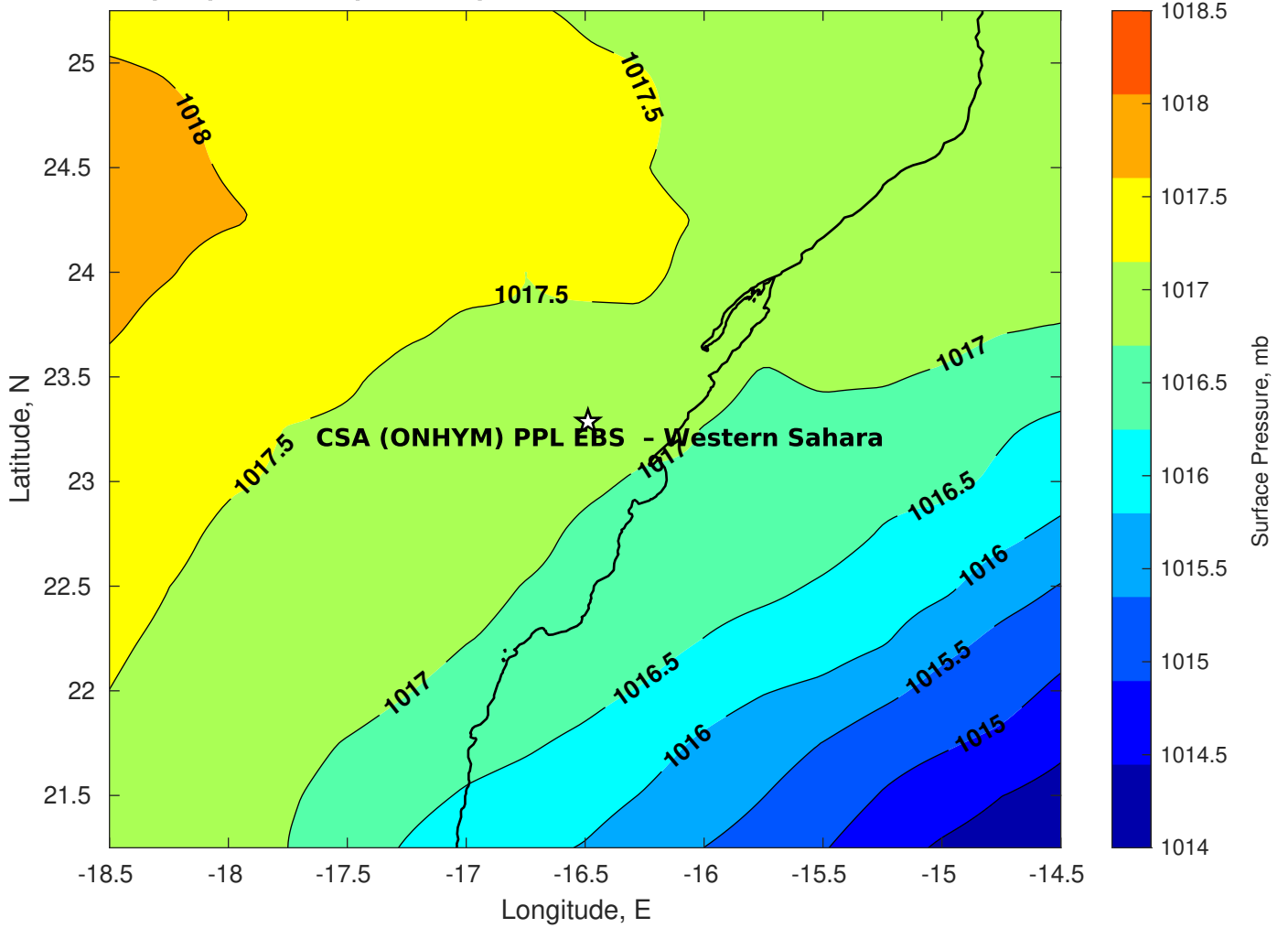
Winds (kts) for CSA (ONHYM) PPL EBS - Western Sahara at 11-Mar-2025 09:00:00



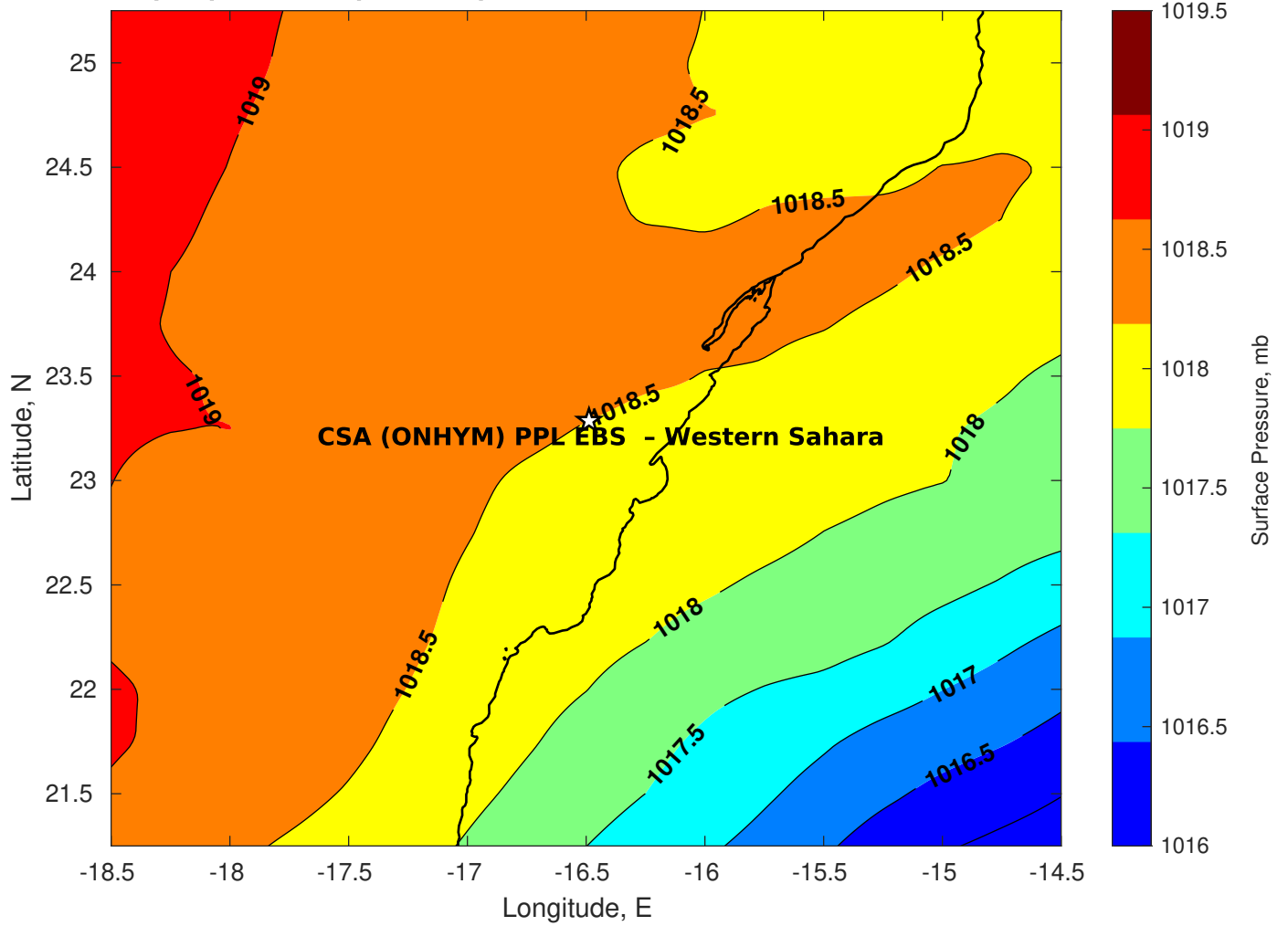
Surface Currents for CSA (ONHYM) PPL EBS - Western Sahara at 10-Mar-2025 00:00:00



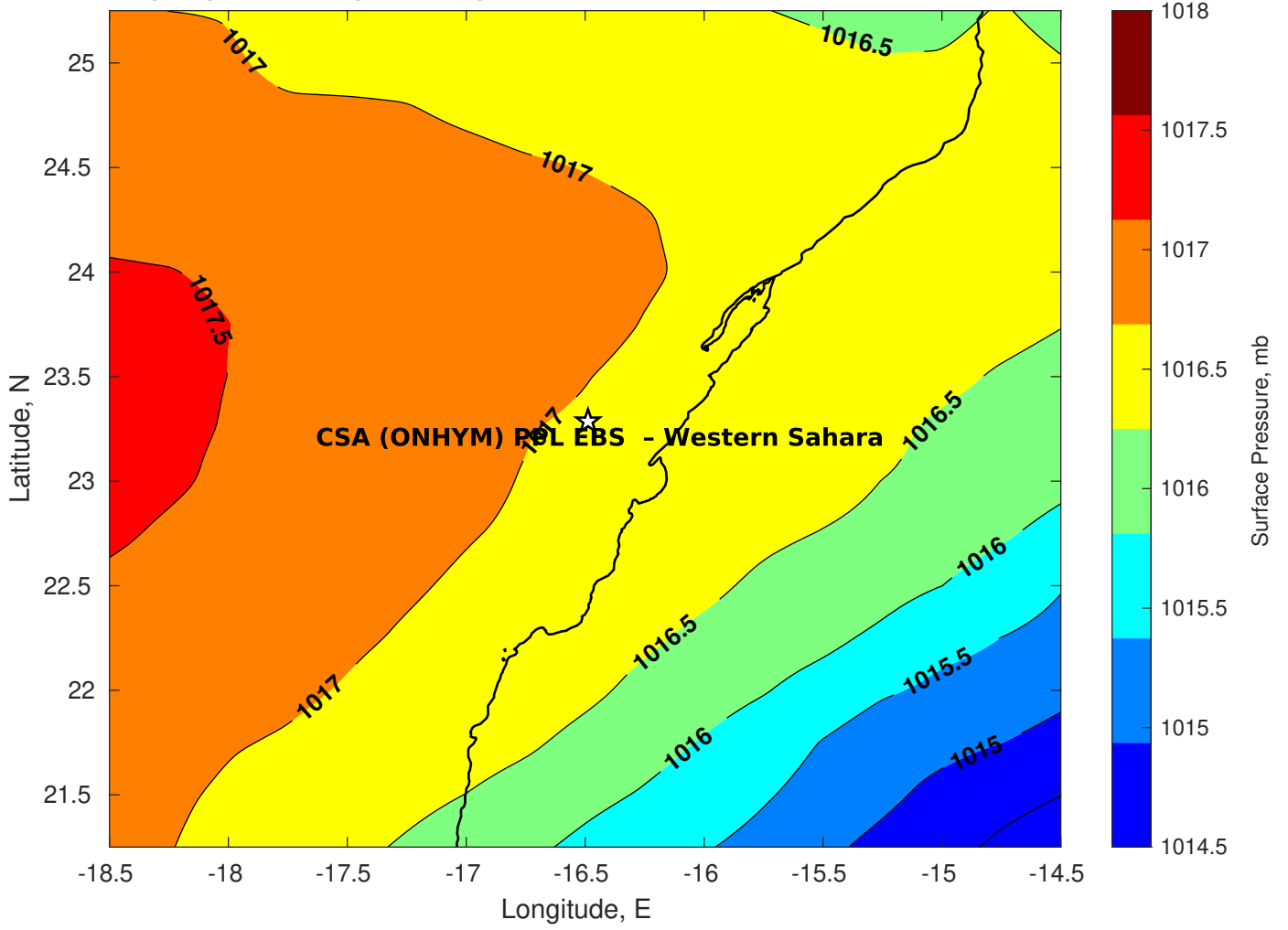
Surface Pressure (mb) for CSA (ONHYM) PPL EBS - Western Sahara at 11-Mar-2025 00:00:00



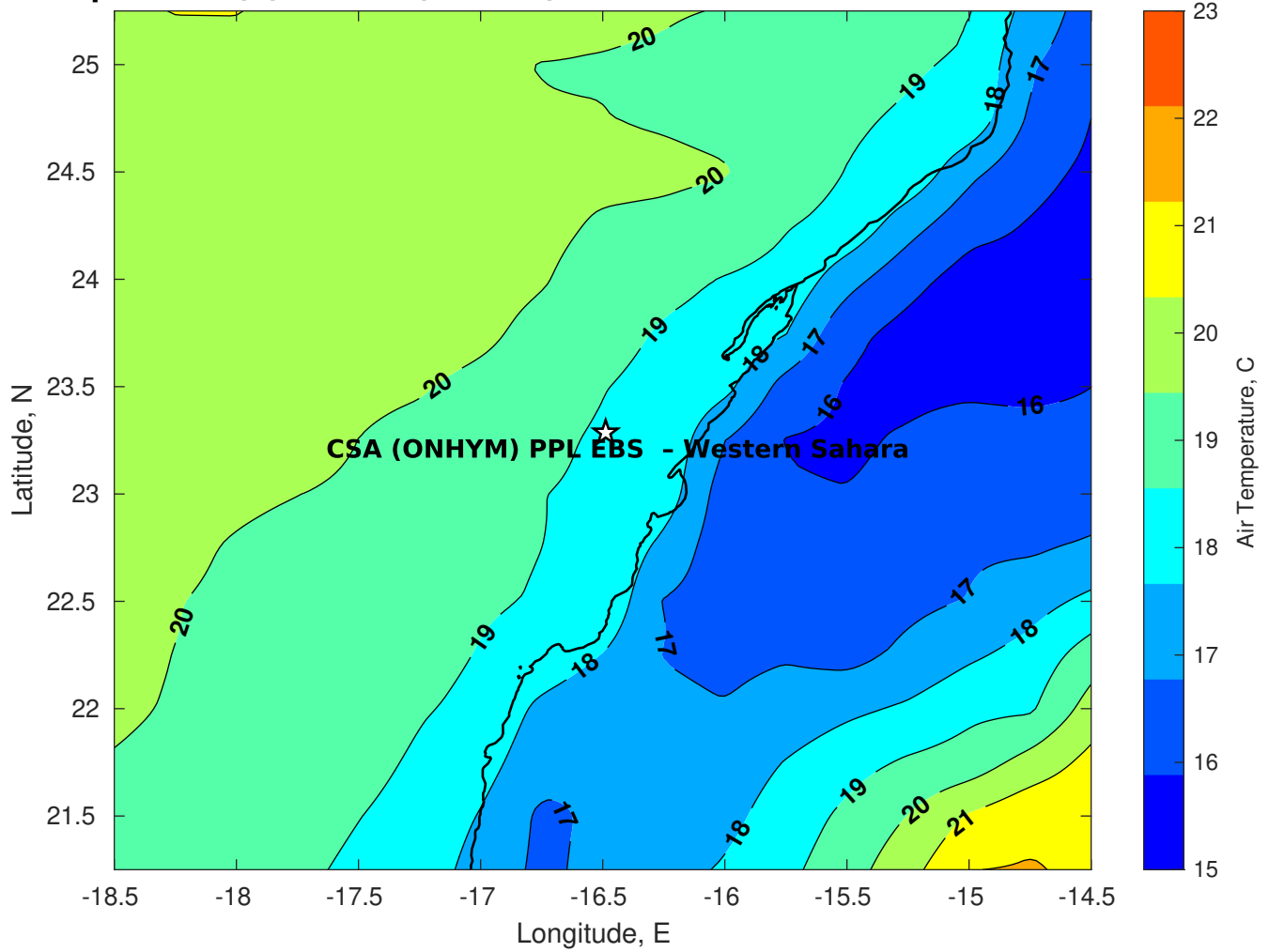
Surface Pressure (mb) for CSA (ONHYM) PPL EBS - Western Sahara at 12-Mar-2025 00:00:00



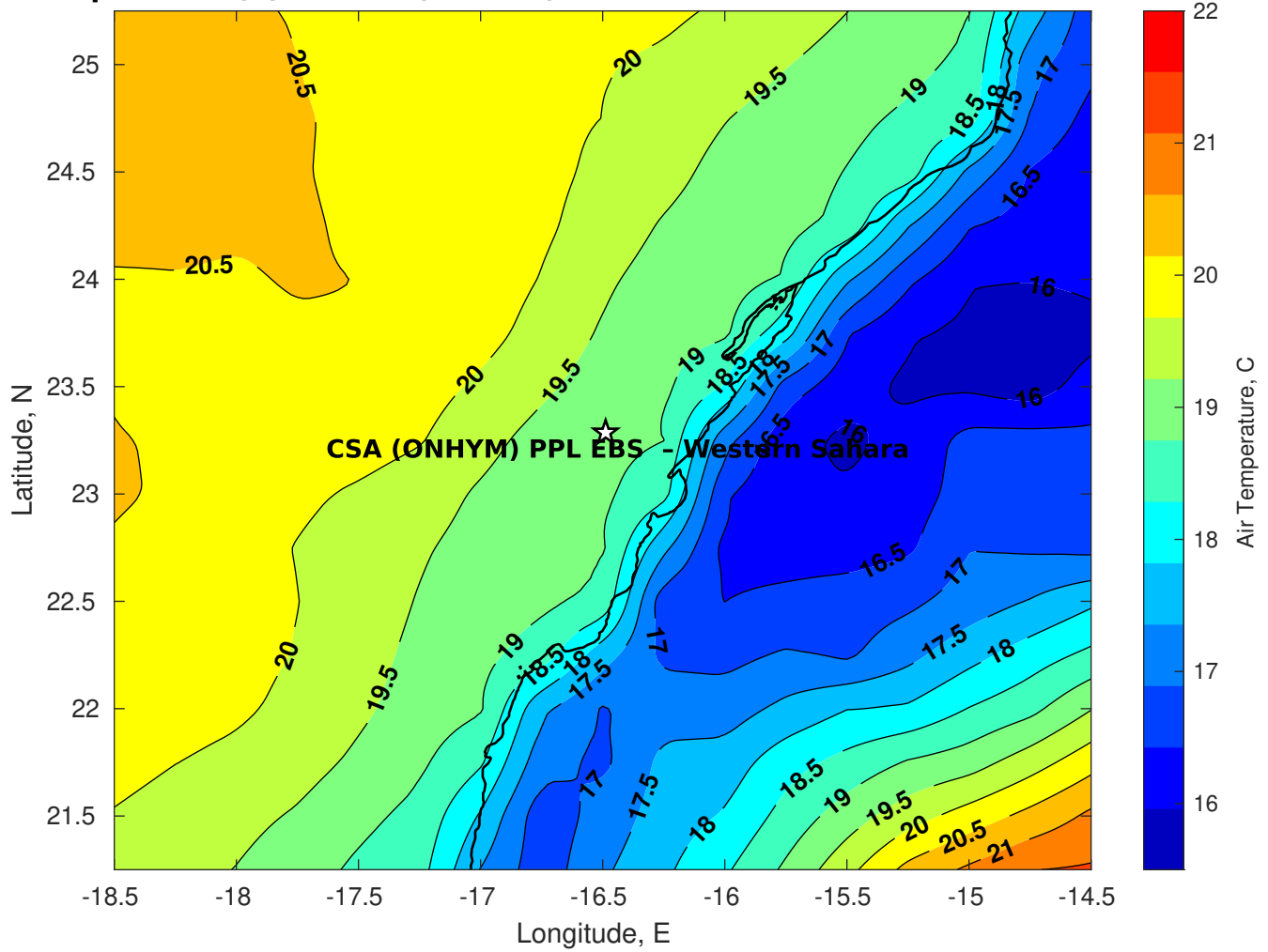
Surface Pressure (mb) for CSA (ONHYM) PPL EBS - Western Sahara at 13-Mar-2025 00:00:00



Air Temperature (C) for CSA (ONHYM) PPL EBS - Western Sahara at 11-Mar-2025



Air Temperature (C) for CSA (ONHYM) PPL EBS - Western Sahara at 11-Mar-2025



Air Temperature (C) for CSA (ONHYM) PPL EBS - Western Sahara at 11-Mar-2025

