

\*\*\*\*\*

Marine Weather Forecast for Shell Noches GC19 PPL Geotechnical  
Forecast valid as of 11-Mar-2025 0800 GMT

\*\*\*\*\*

All times are local.

Today

Winds: NW, 5-10 kts.  
Waves: W, 2-3 feet, 5-6 sec.  
No currents available.

Tonight

Winds: N, 10-15 kts.  
Waves: NW, 1-2 feet, 4-5 sec.  
No currents available.

Tuesday

Winds: NW, 5-10 kts.  
Waves: W, 2-3 feet, 5-6 sec.  
No currents available.

Wednesday Night

Winds: N, 10-15 kts.  
Waves: N, 3-4 feet, 4-5 sec.  
No currents available.

Wednesday

Winds: N, 10-15 kts.  
Waves: NW, 2-3 feet, 3-4 sec.  
No currents available.

Thursday Night

Winds: N, 5-10 kts.  
Waves: N, 3-4 feet, 5-6 sec.  
No currents available.

Thursday

Winds: NW, 10-15 kts.  
Waves: N, 3-4 feet, 5-6 sec.  
No currents available.

Friday Night

Winds: N, 15-20 kts.  
Waves: N, 4-5 feet, 5-6 sec.  
No currents available.

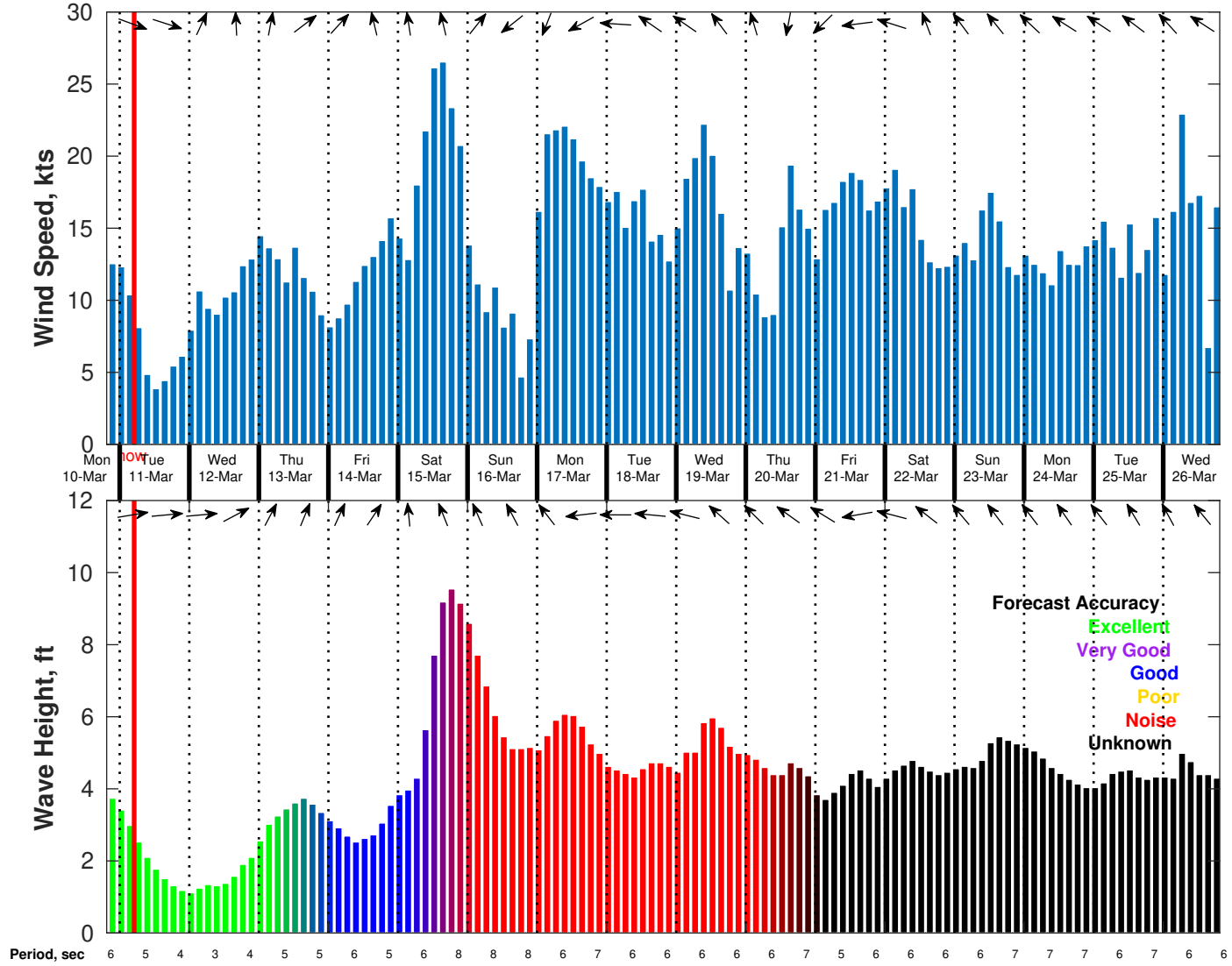
Friday

Winds: N, 15-20 kts.  
Waves: N, 3-4 feet, 5-6 sec.  
No currents available.

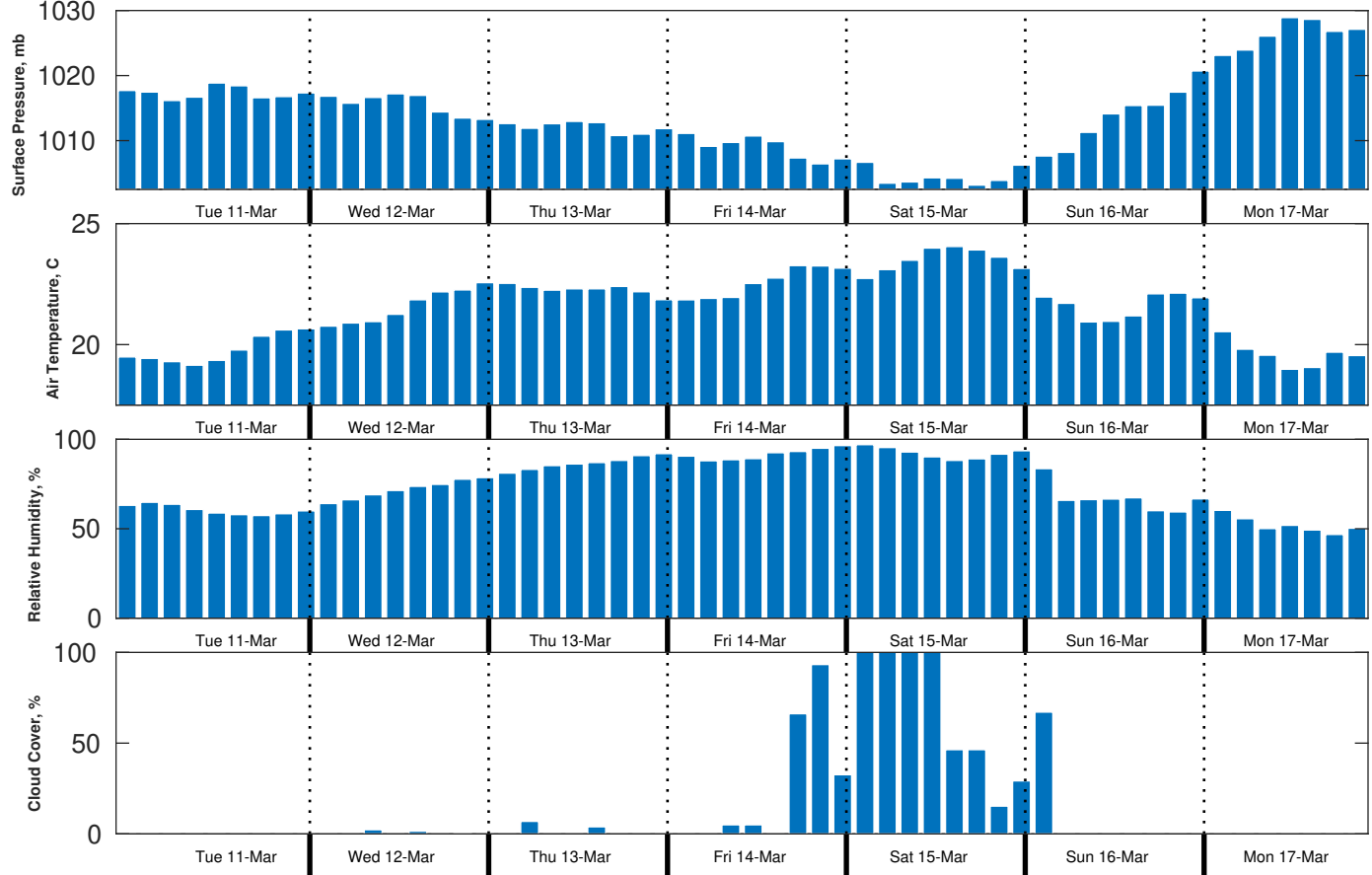
Saturday Night

Winds: N, 10-15 kts.  
Waves: N, 8-9 feet, 8-9 sec.  
No currents available.

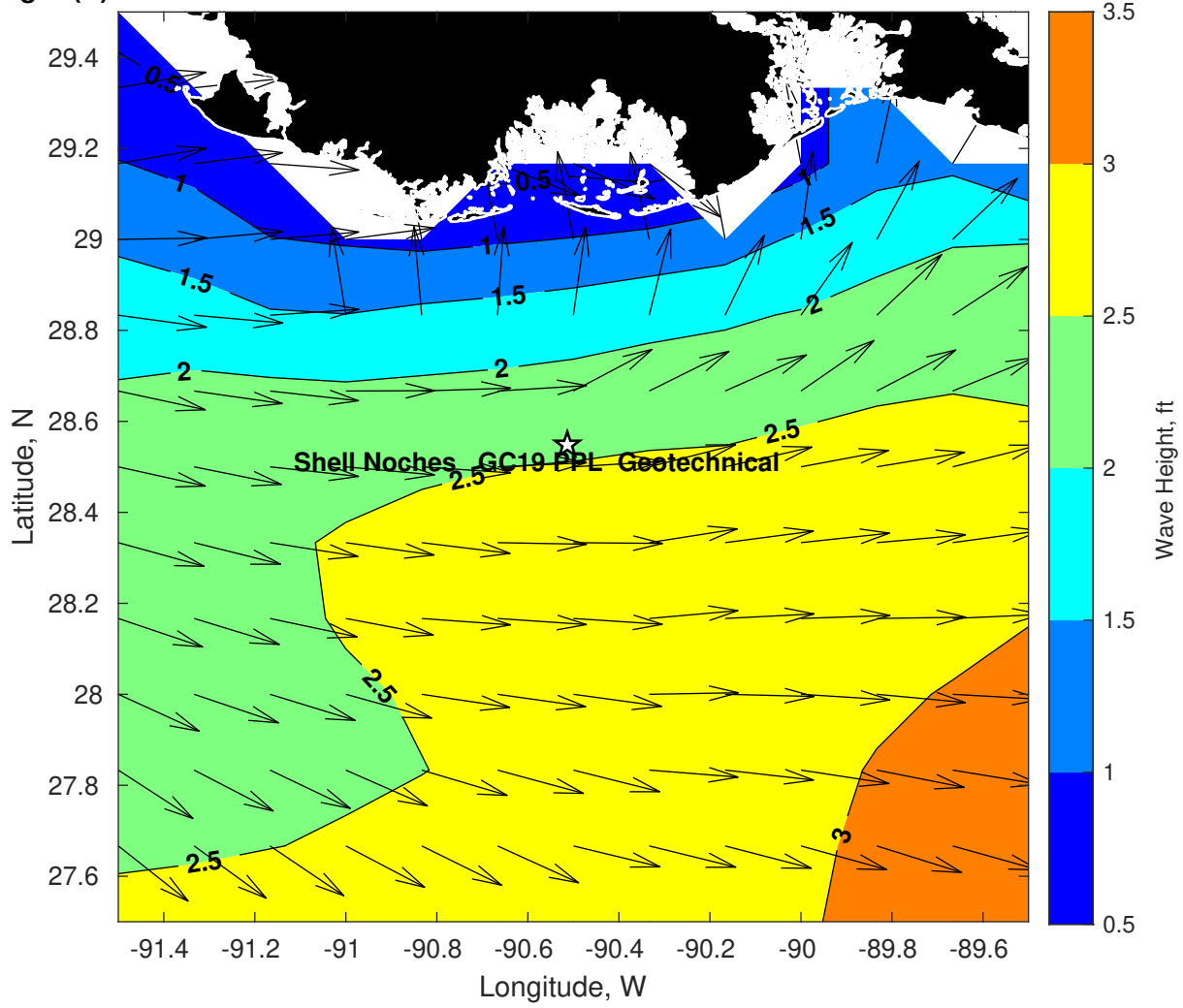
**Wind & Wave Forecast for Shell Noches GC19 PPL Geotechnical from 10-Mar-2025 20:00:00 to 26-Mar-2025 20:00:00**



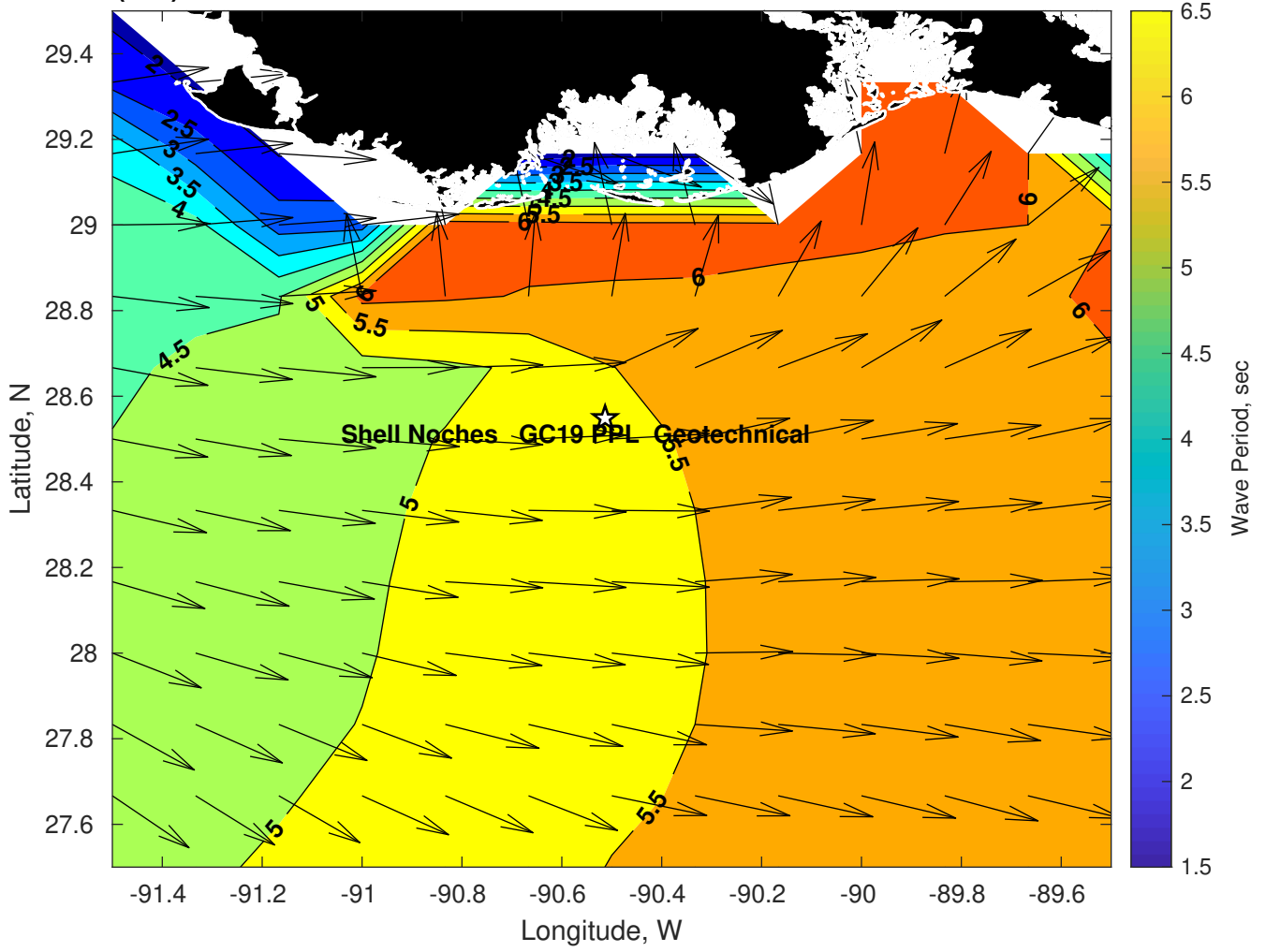
**Met Forecast for Shell Noches GC19 PPL Geotechnical from 11-Mar-2025 00:00:00 to 18-Mar-2025 00:00:00**



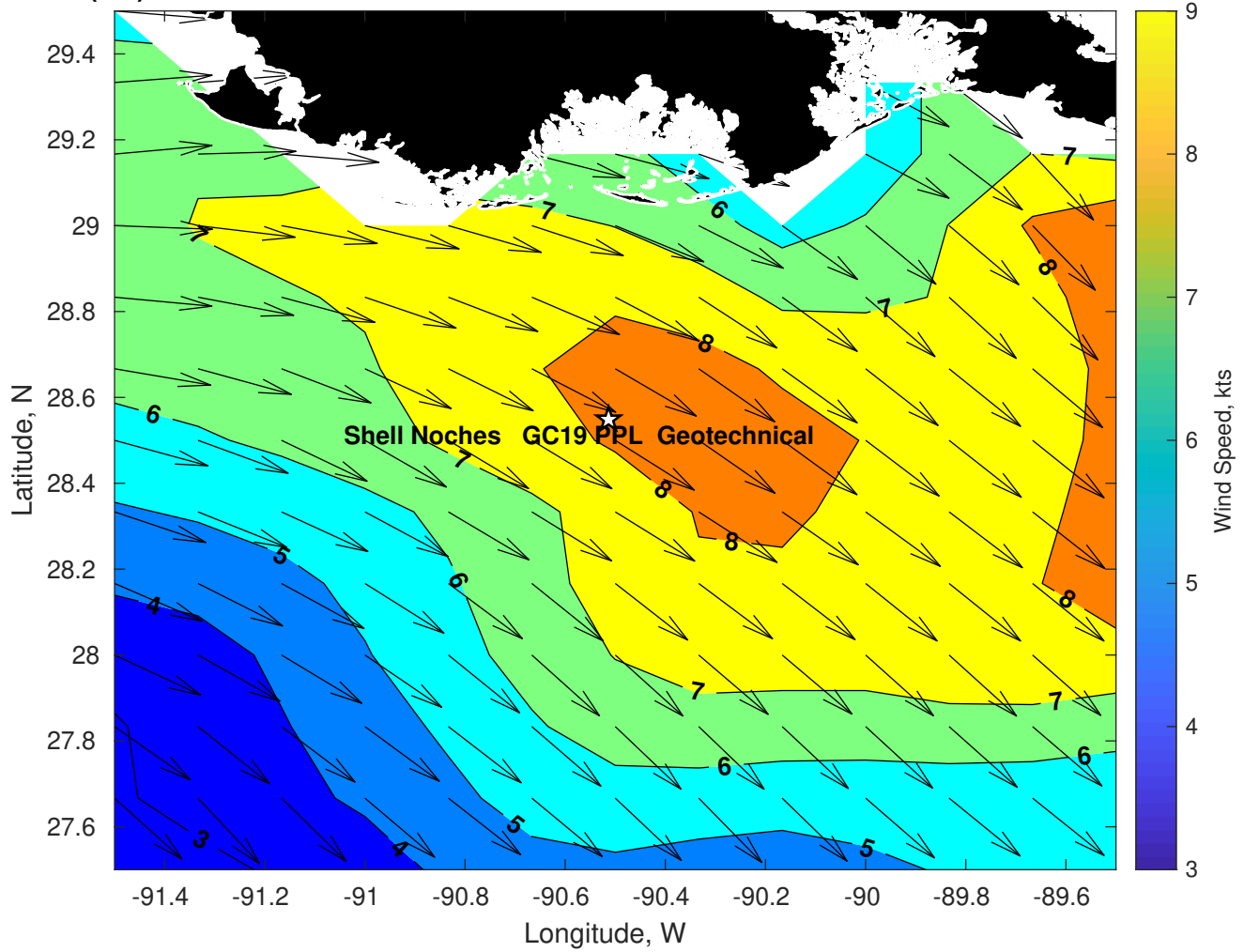
Wave Height (ft) for Shell Noches GC19 PPL Geotechnical at 11-Mar-2025 09:00:00



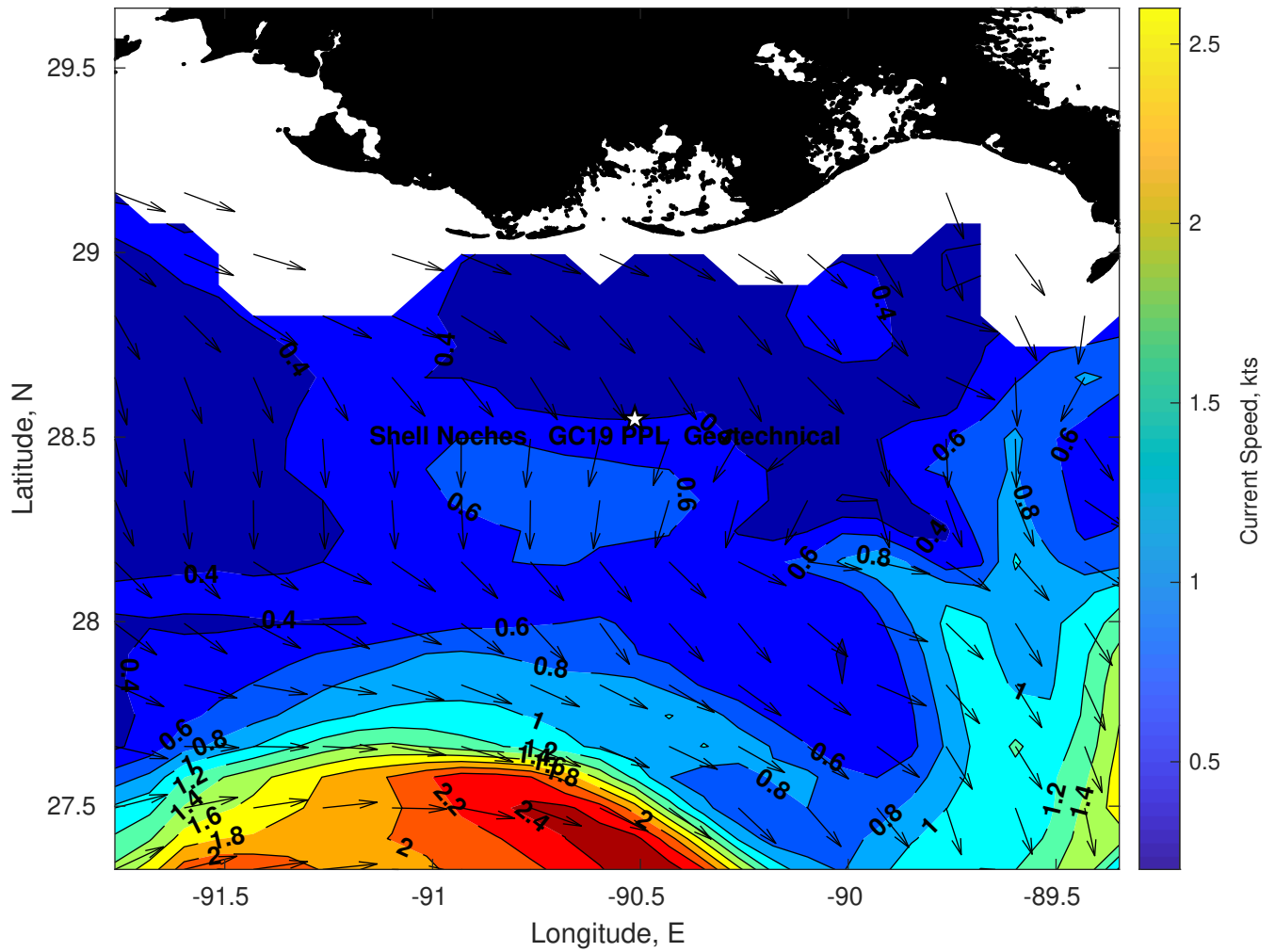
Wave Period (sec) for Shell Noches GC19 PPL Geotechnical at 11-Mar-2025 09:00:00



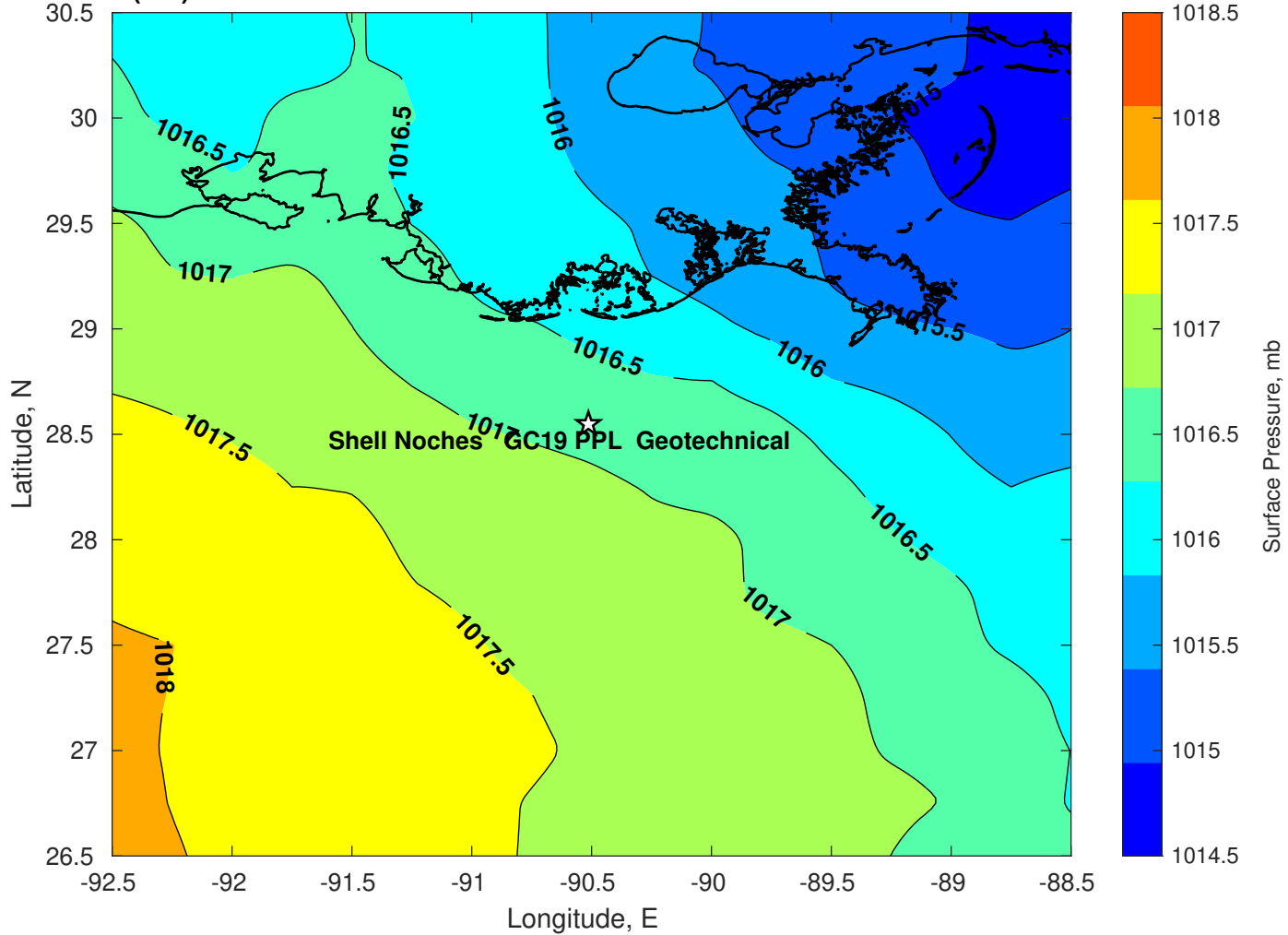
**Winds (kts) for Shell Noches GC19 PPL Geotechnical at 11-Mar-2025 09:00:00**



Surface Currents for Shell Noches GC19 PPL Geotechnical at 10-Mar-2025 00:00:00

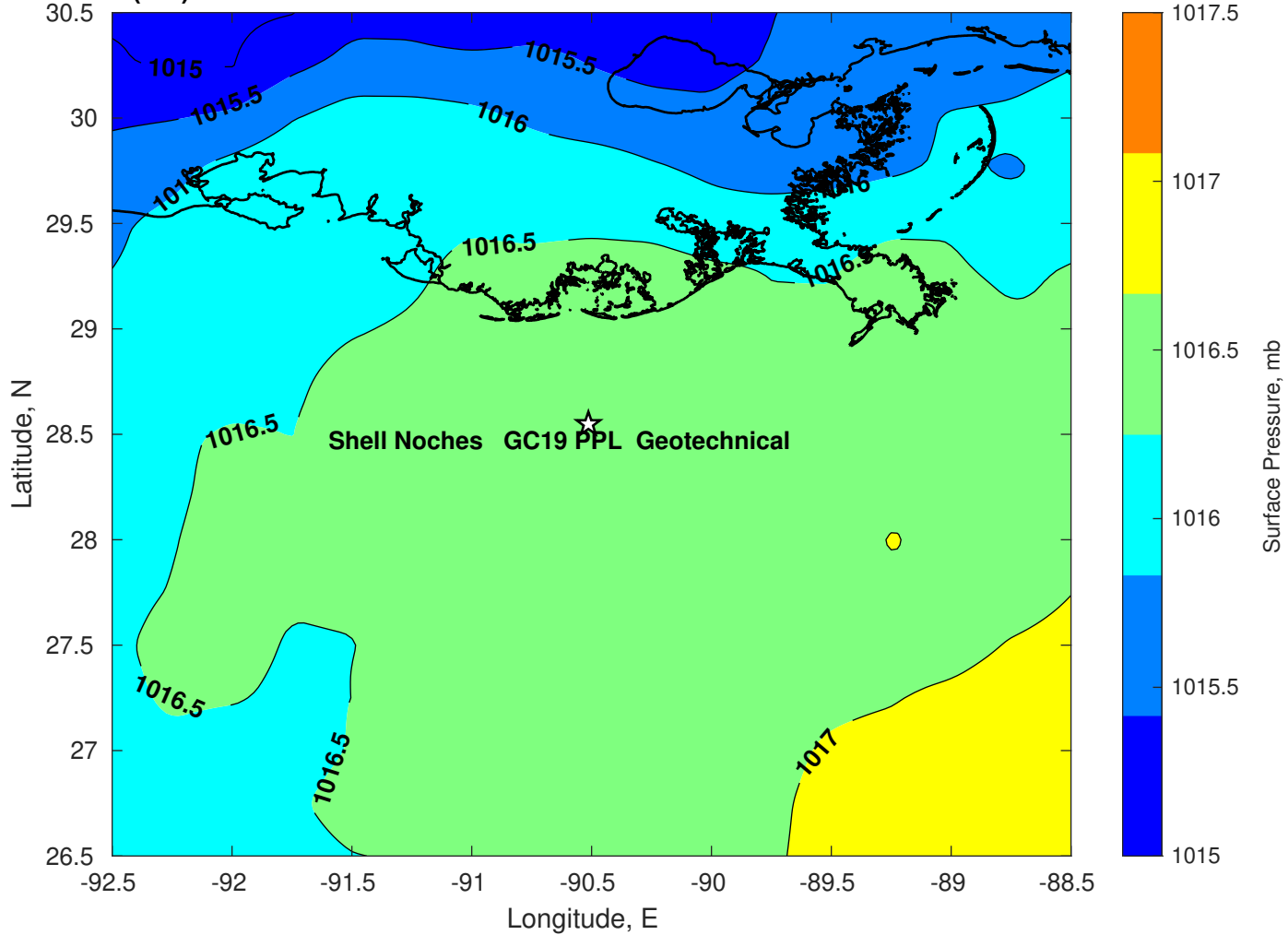


Surface Pressure (mb) for Shell Noches GC19 PPL Geotechnical at 11-Mar-2025 00:00:00

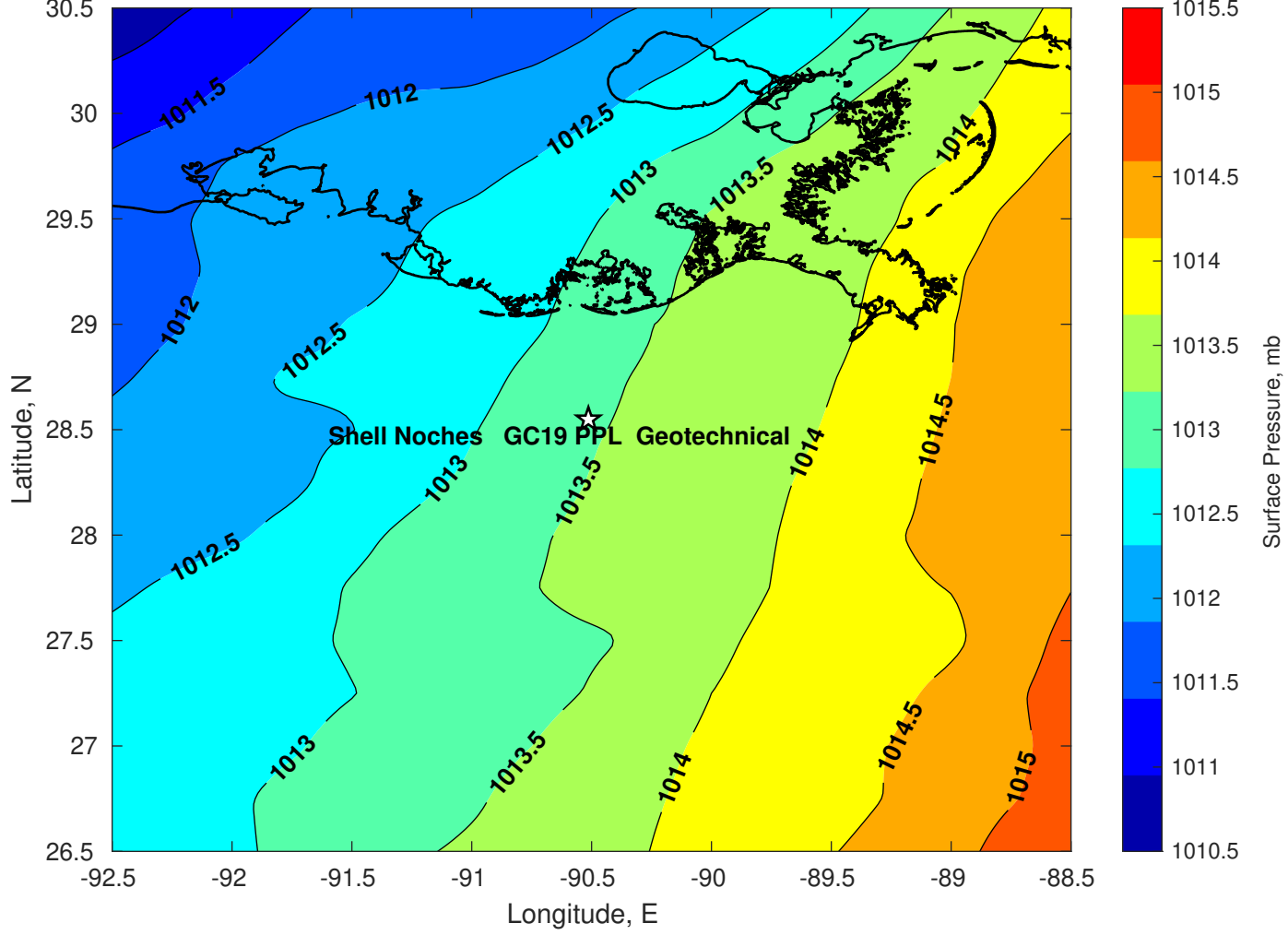




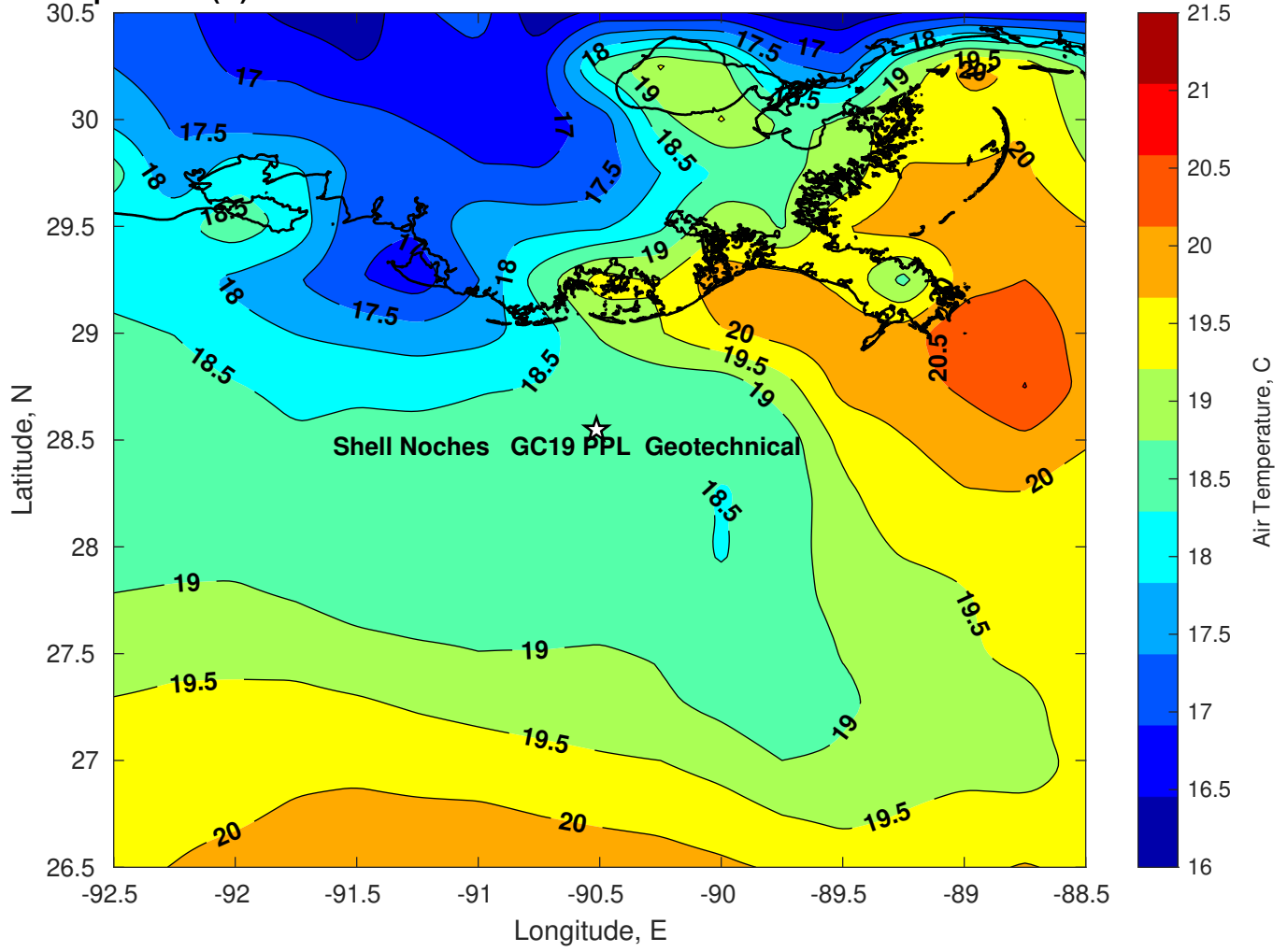
Surface Pressure (mb) for Shell Noches GC19 PPL Geotechnical at 12-Mar-2025 00:00:00



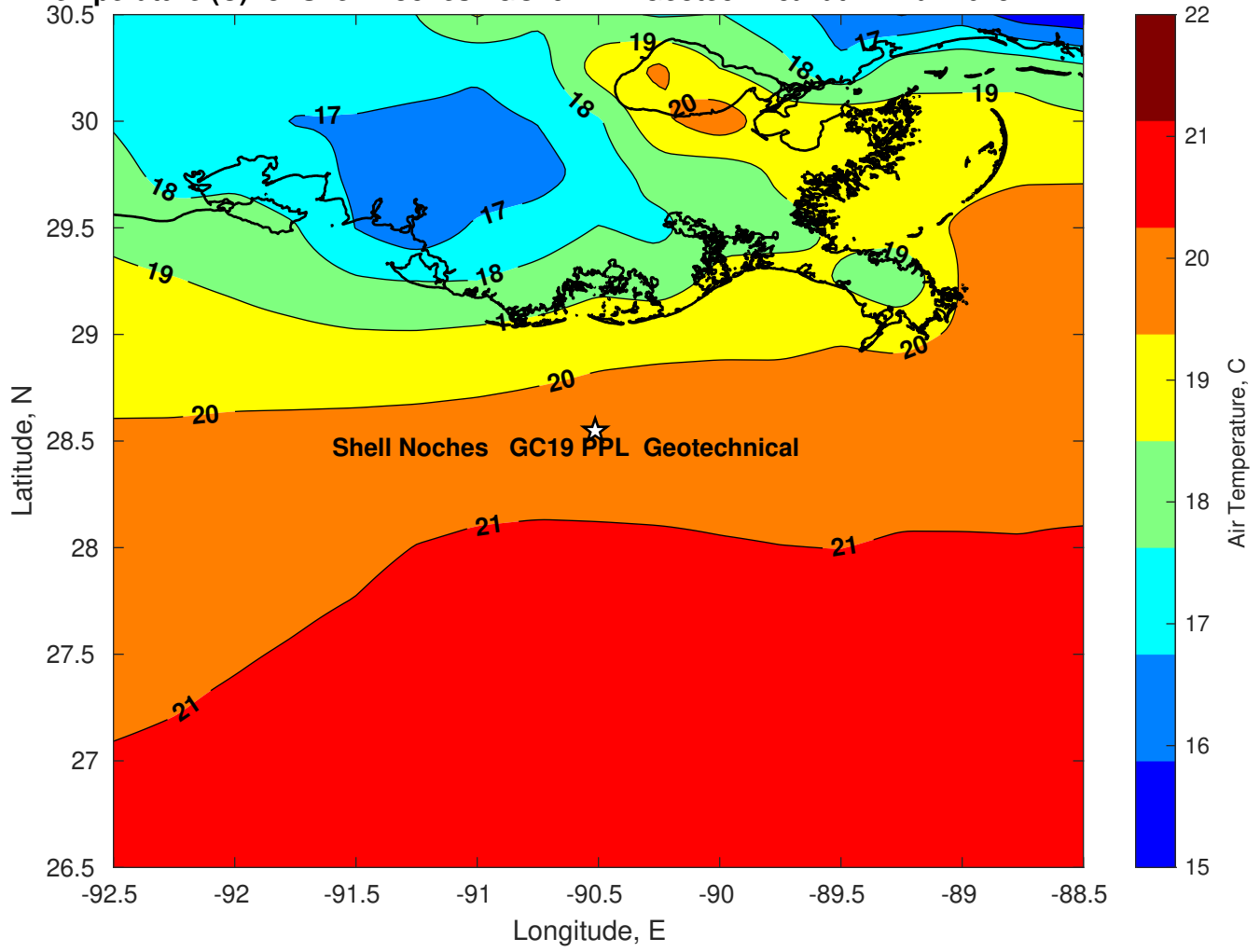
Surface Pressure (mb) for Shell Noches GC19 PPL Geotechnical at 13-Mar-2025 00:00:00



Air Temperature (C) for Shell Noches GC19 PPL Geotechnical at 11-Mar-2025



Air Temperature (C) for Shell Noches GC19 PPL Geotechnical at 11-Mar-2025



**Air Temperature (C) for Shell Noches GC19 PPL Geotechnical at 11-Mar-2025**

