

\*\*\*\*\*

Marine Weather Forecast for TOTAL Namibia GTS

Forecast valid as of 12-Mar-2025 0800 GMT

\*\*\*\*\*

All times are local.

Today

Winds: N, 20-25 kts.

Waves: NW, 10-11 feet, 14-15 sec.

No currents available.

Tonight

Winds: NE, 15-20 kts.

Waves: NW, 10-11 feet, 14-15 sec.

No currents available.

Thursday

Winds: NE, 15-20 kts.

Waves: NW, 9-10 feet, 13-14 sec.

No currents available.

Thursday Night

Winds: N, 10-15 kts.

Waves: N, 8-9 feet, 11-12 sec.

No currents available.

Friday

Winds: NW, 10-15 kts.

Waves: N, 8-9 feet, 11-12 sec.

No currents available.

Friday Night

Winds: NW, 5-10 kts.

Waves: N, 7-8 feet, 10-11 sec.

No currents available.

Saturday

Winds: N, 10-15 kts.

Waves: N, 5-6 feet, 10-11 sec.

No currents available.

Saturday Night

Winds: NE, 10-15 kts.

Waves: N, 4-5 feet, 10-11 sec.

No currents available.

Sunday

Winds: NE, 15-20 kts.

Waves: N, 5-6 feet, 17-18 sec.

No currents available.

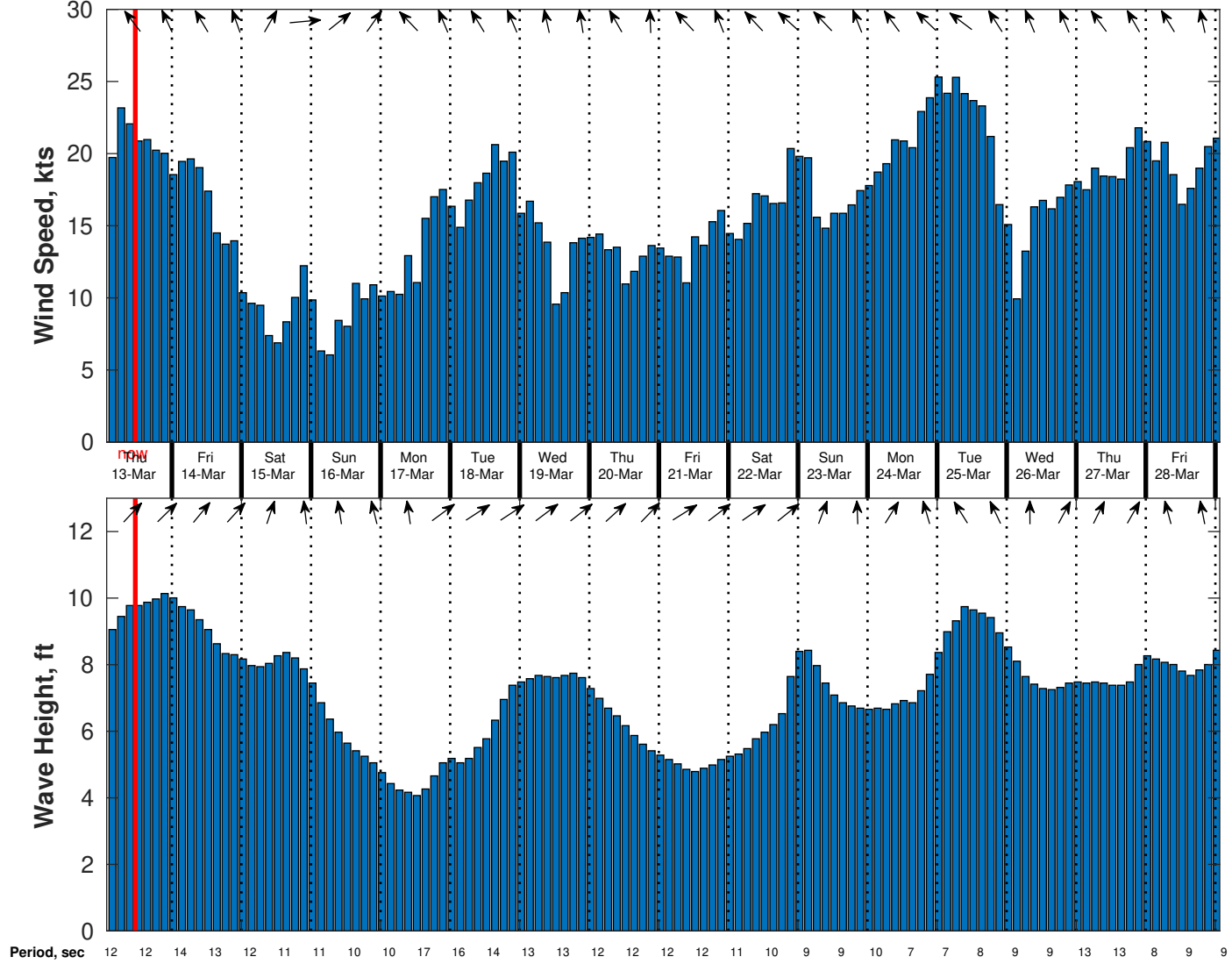
Sunday Night

Winds: NE, 15-20 kts.

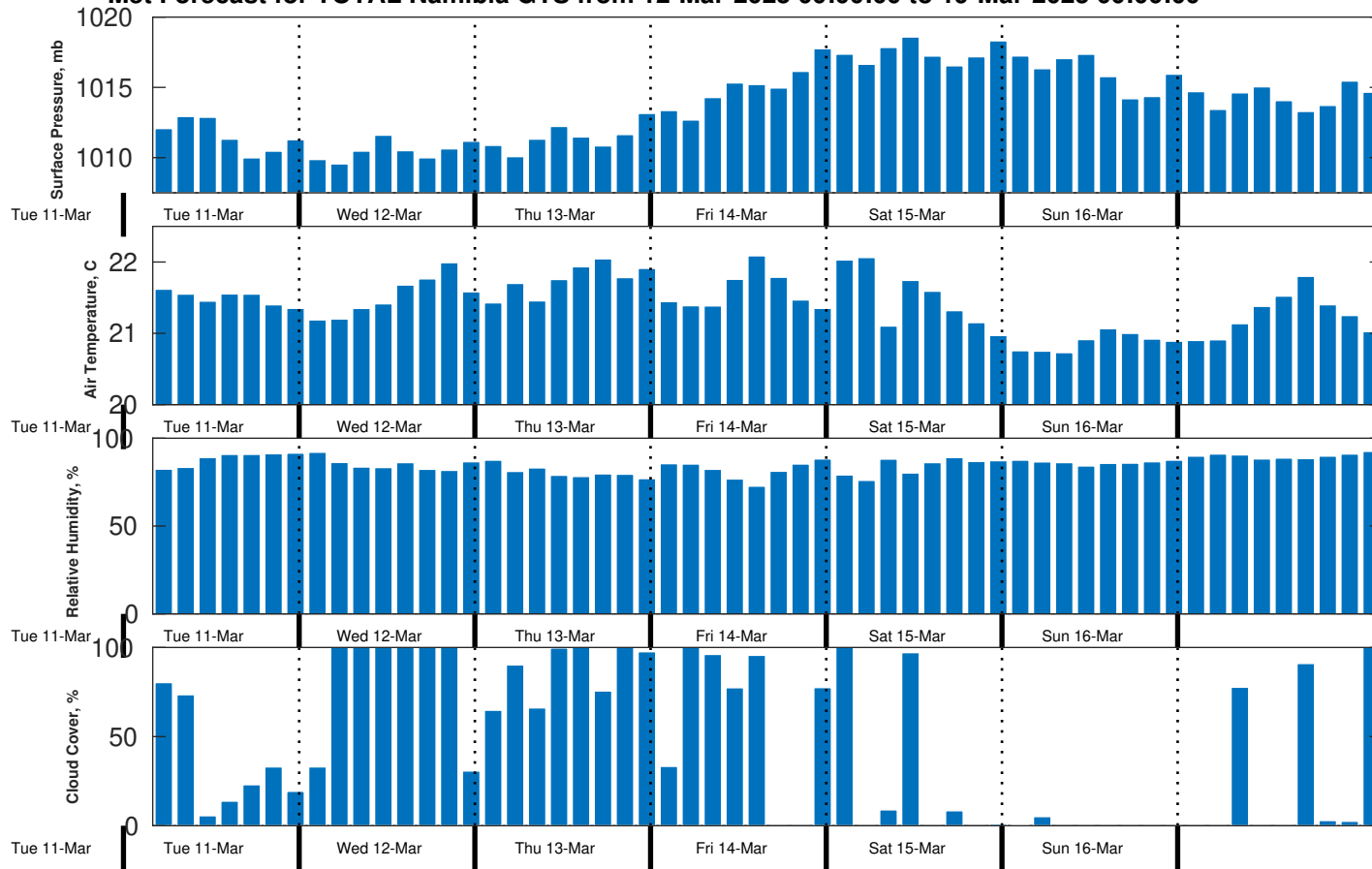
Waves: NW, 5-6 feet, 16-17 sec.

No currents available.

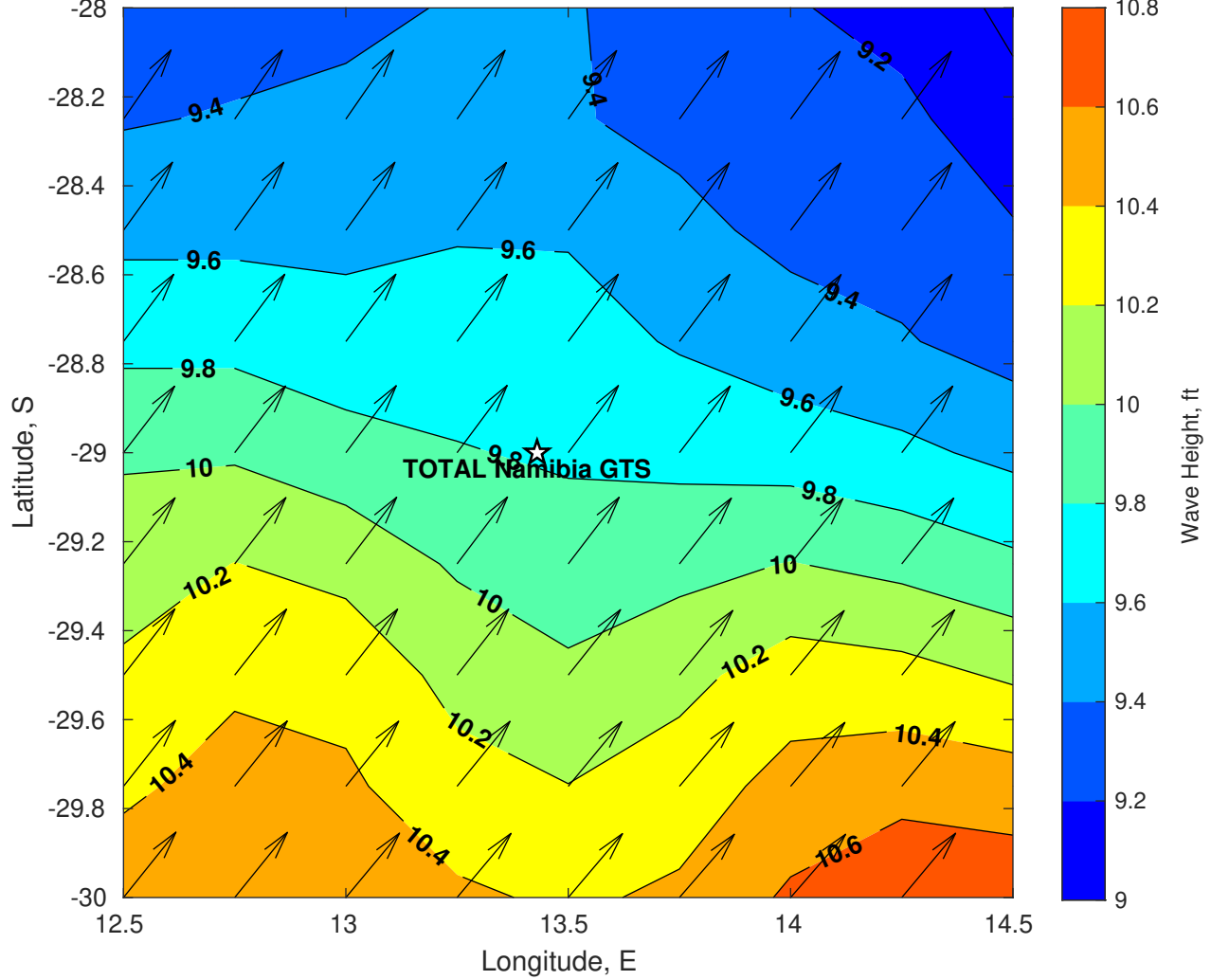
Wind & Wave Forecast for TOTAL Namibia GTS from 12-Mar-2025 02:00:00 to 28-Mar-2025 02:00:00



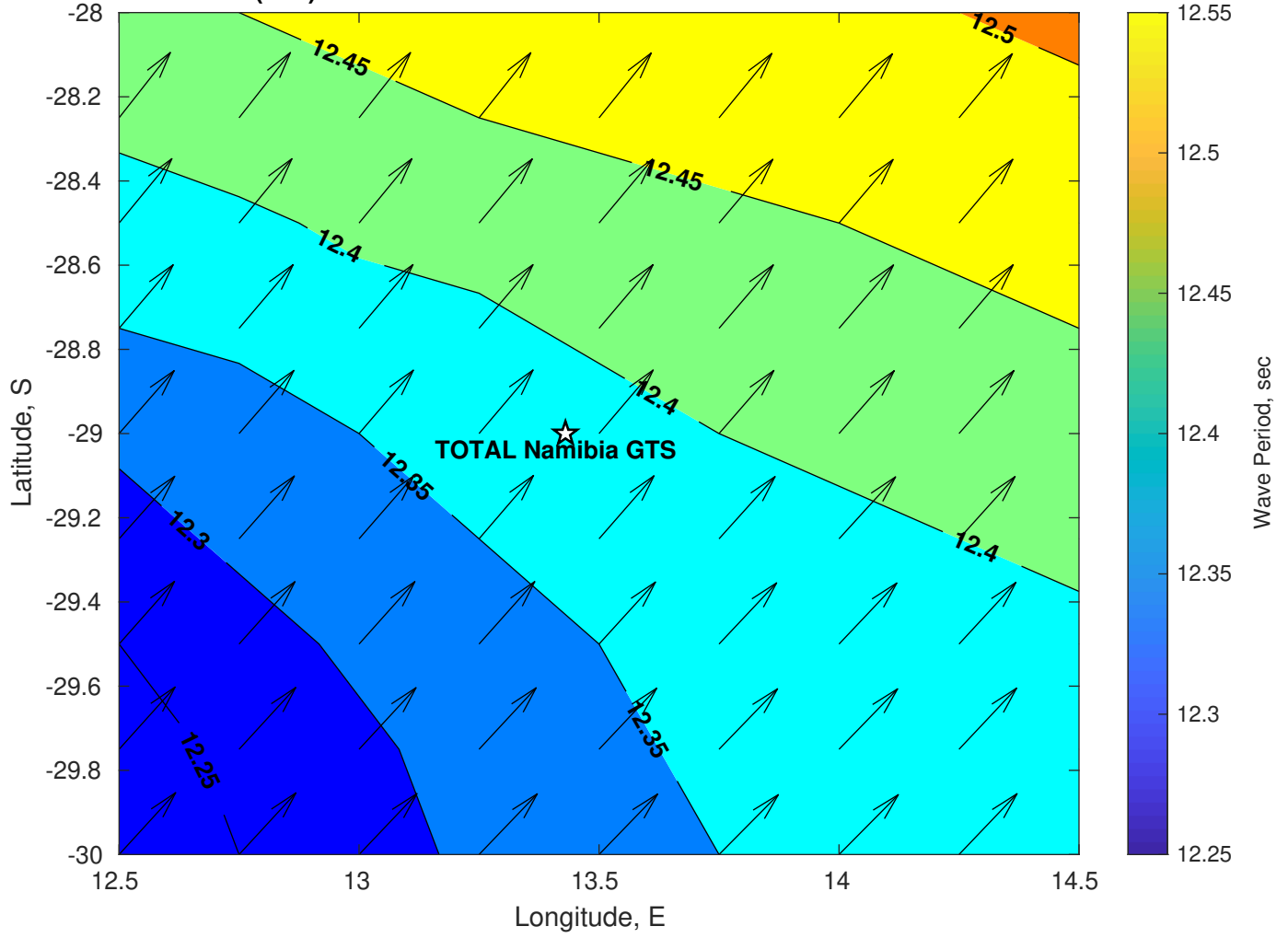
### Met Forecast for TOTAL Namibia GTS from 12-Mar-2025 00:00:00 to 19-Mar-2025 00:00:00



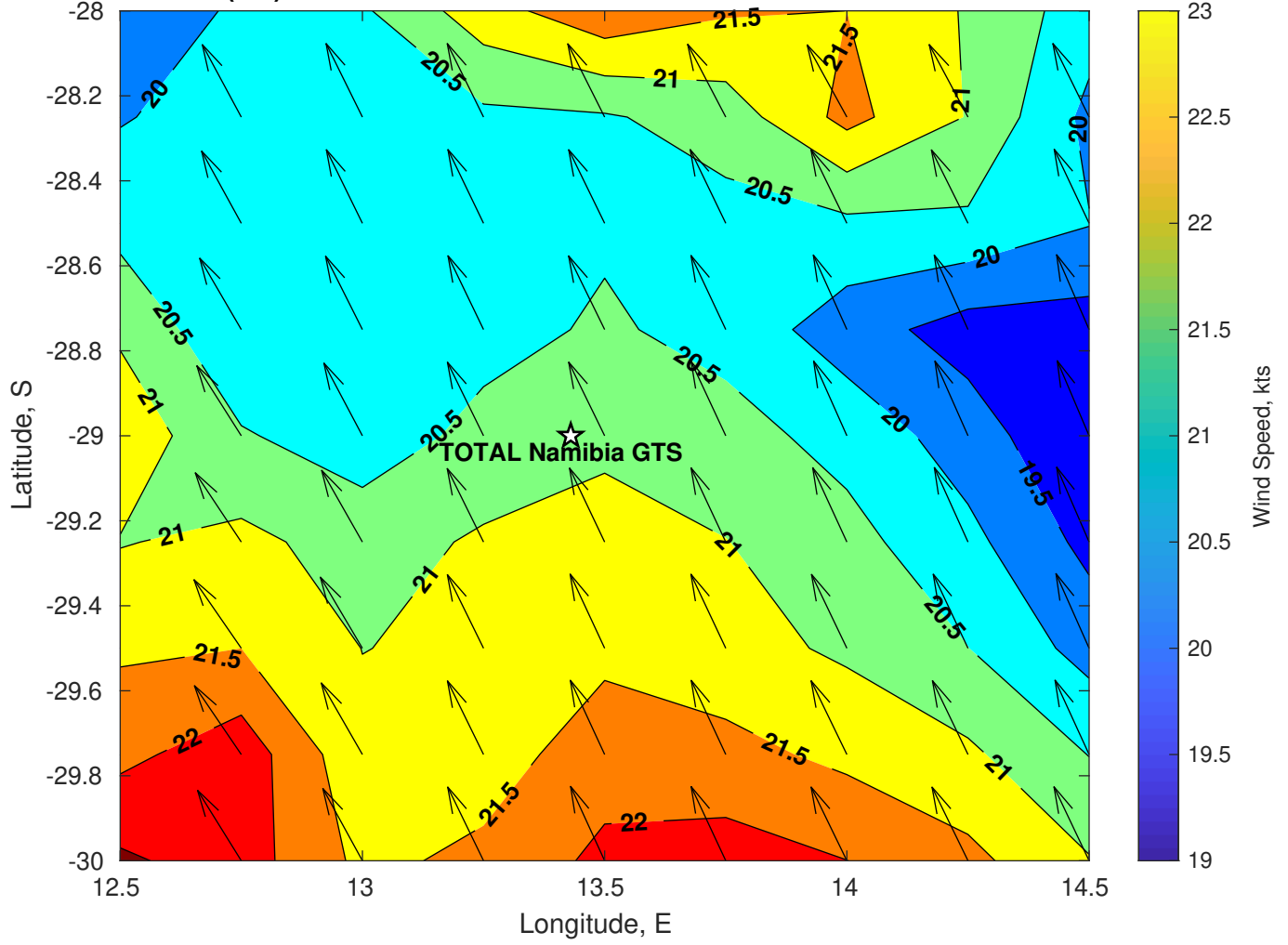
Wave Height (ft) for TOTAL Namibia GTS at 12-Mar-2025 09:00:00



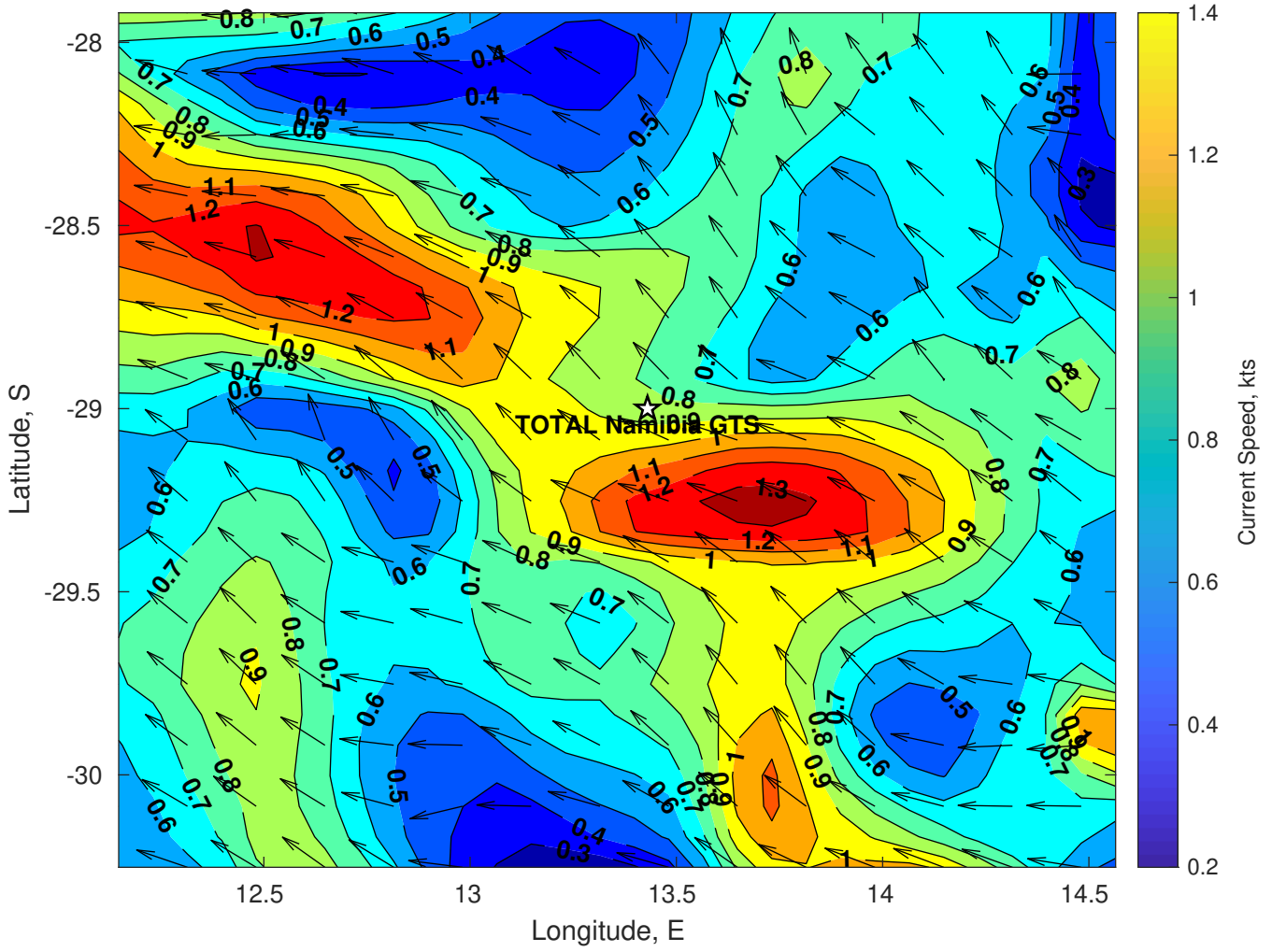
Wave Period (sec) for TOTAL Namibia GTS at 12-Mar-2025 09:00:00



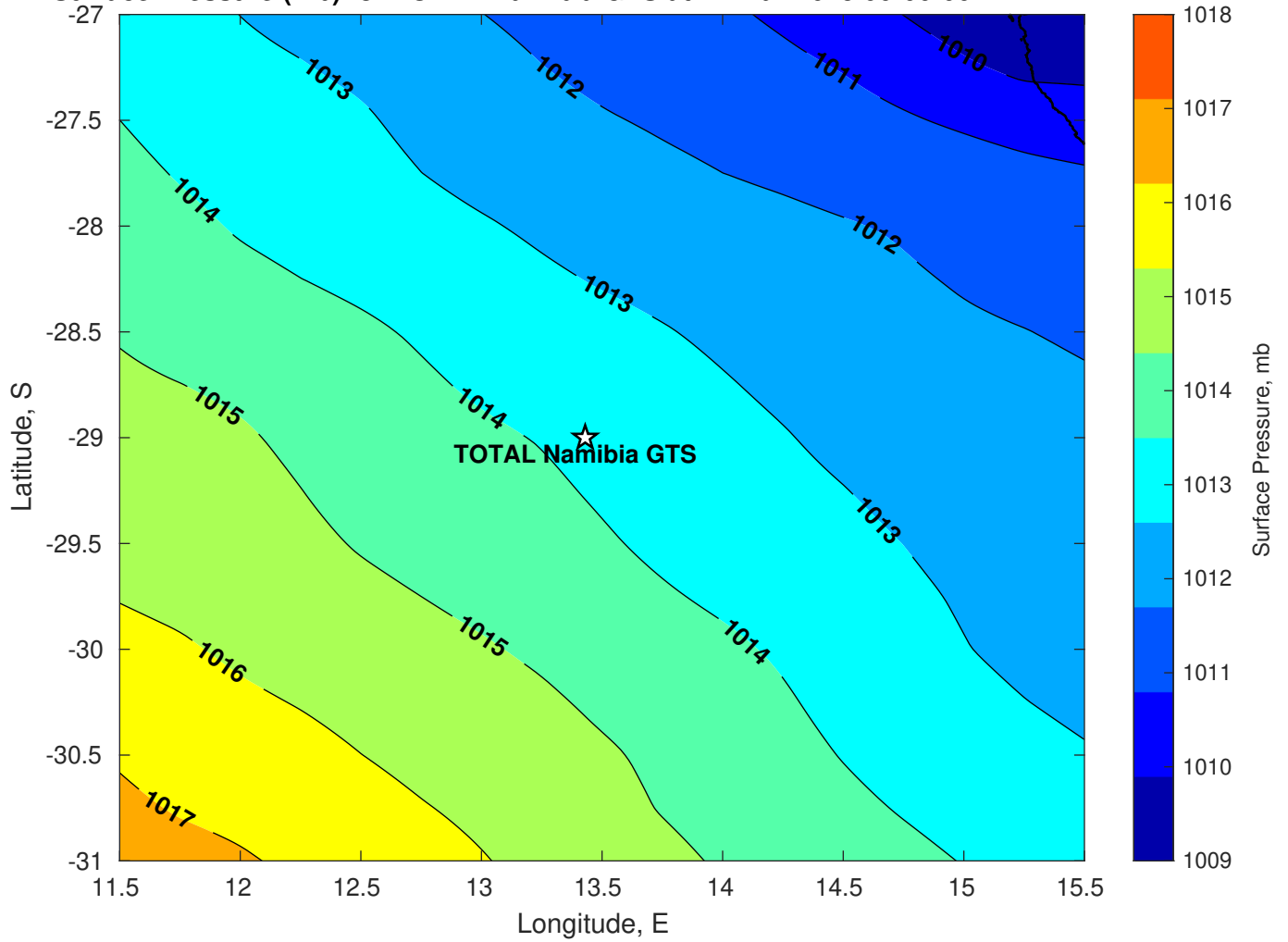
Winds (kts) for TOTAL Namibia GTS at 12-Mar-2025 09:00:00



Surface Currents for TOTAL Namibia GTS at 11-Mar-2025 00:00:00

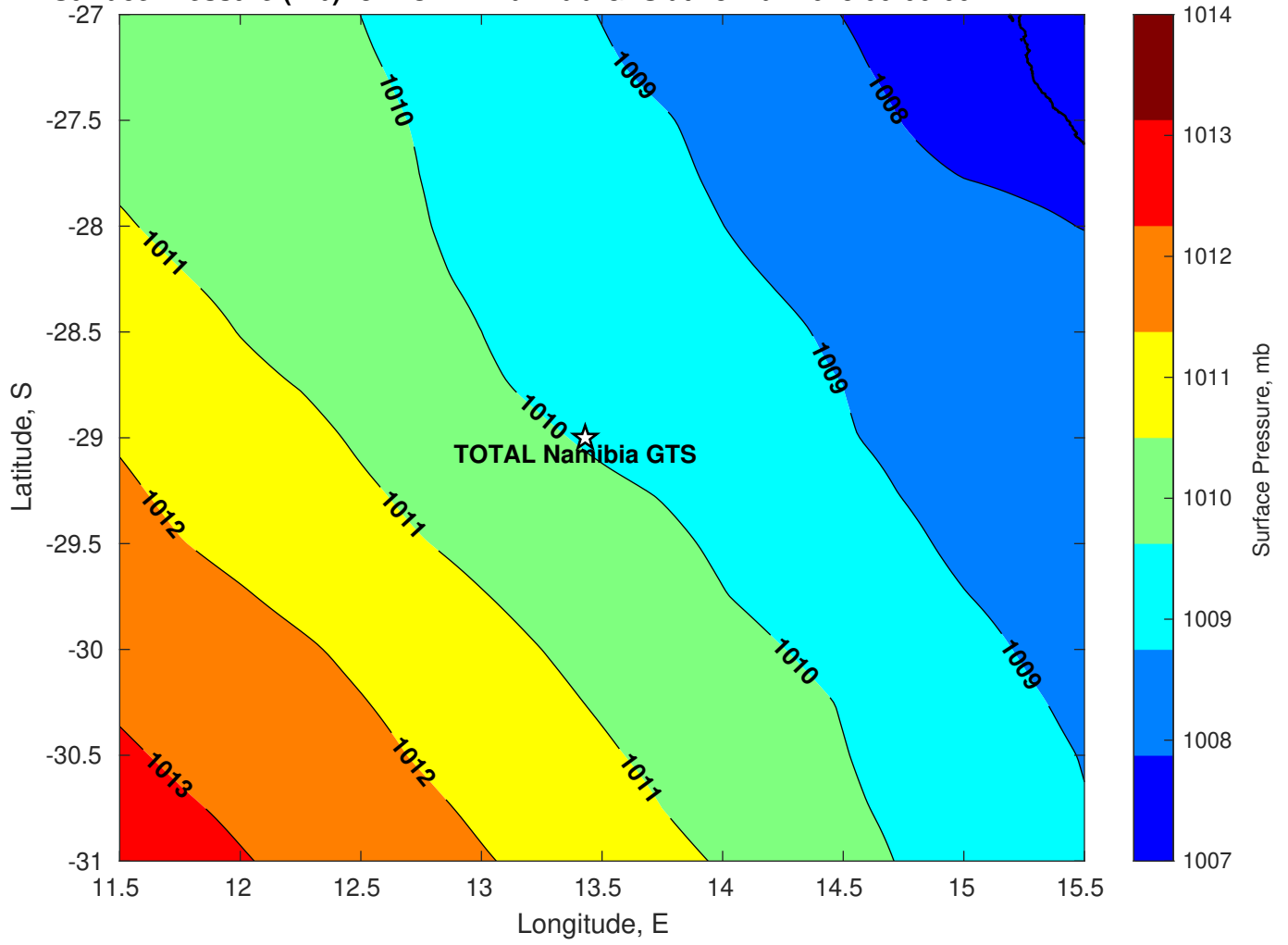


Surface Pressure (mb) for TOTAL Namibia GTS at 12-Mar-2025 00:00:00

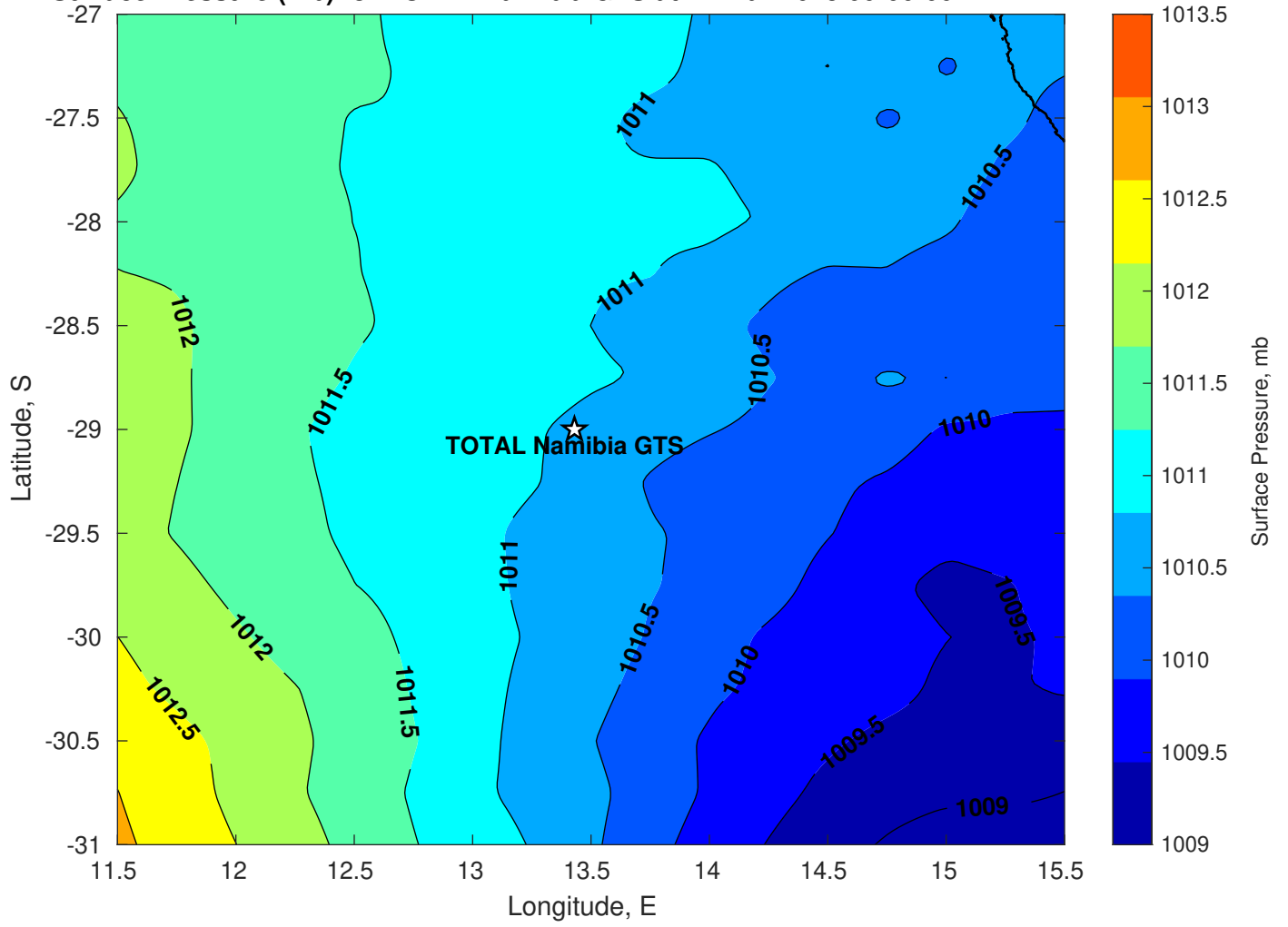




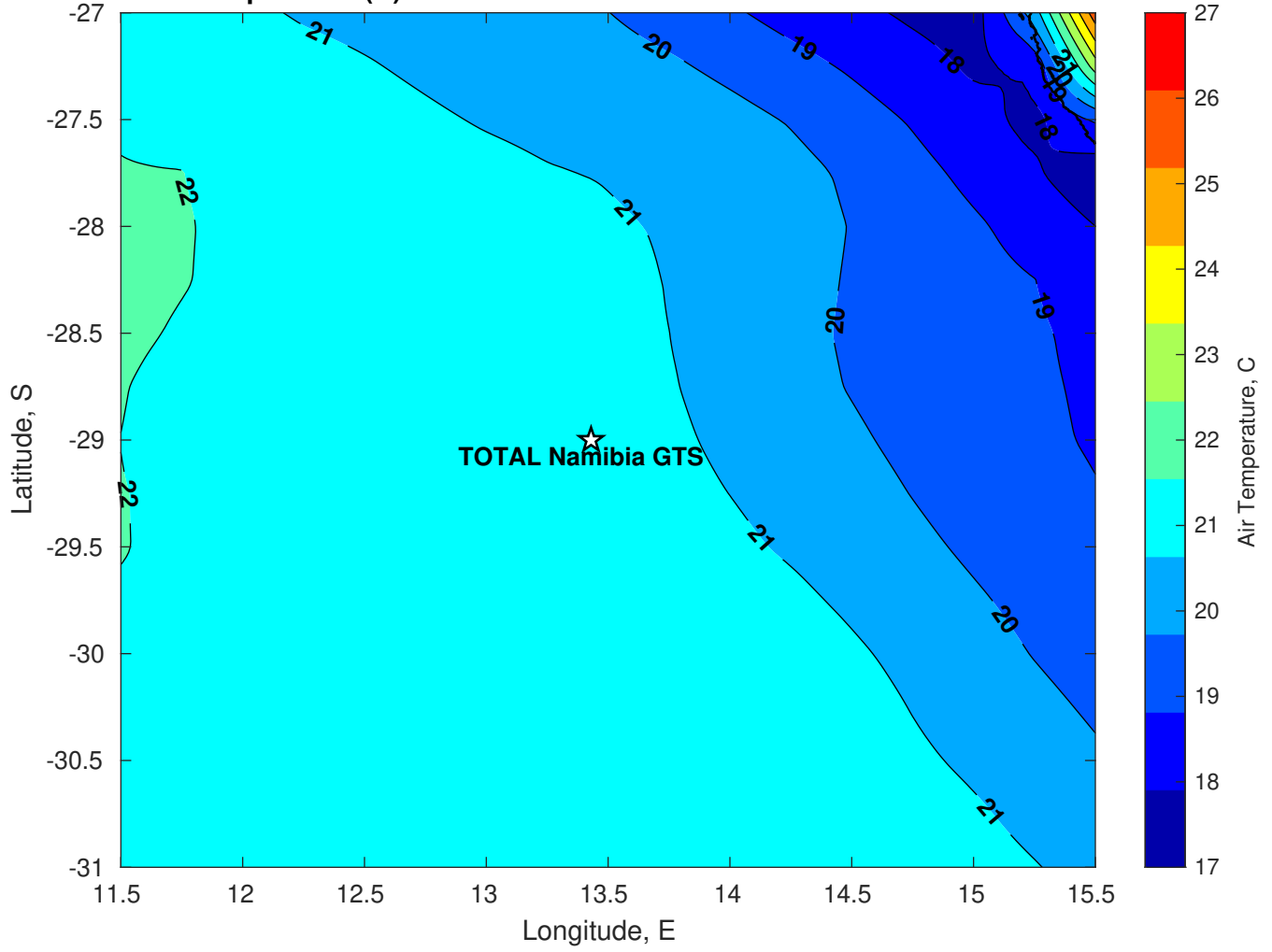
Surface Pressure (mb) for TOTAL Namibia GTS at 13-Mar-2025 00:00:00



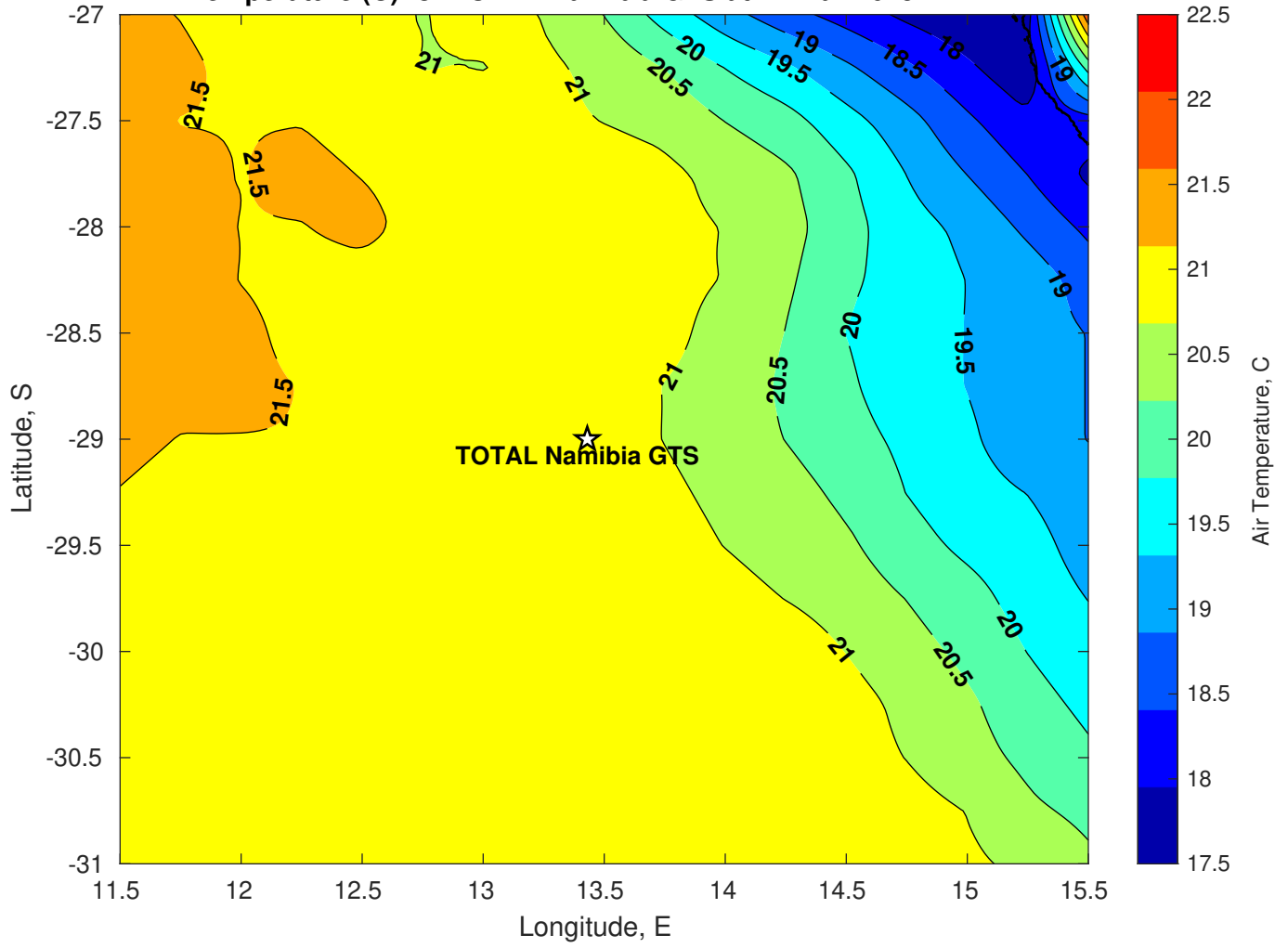
Surface Pressure (mb) for TOTAL Namibia GTS at 14-Mar-2025 00:00:00



**Air Temperature (C) for TOTAL Namibia GTS at 12-Mar-2025**



**Air Temperature (C) for TOTAL Namibia GTS at 12-Mar-2025**



**Air Temperature (C) for TOTAL Namibia GTS at 12-Mar-2025**

