
Marine Weather Forecast for Shell Noches GC19 PPL Geotechnical
Forecast valid as of 14-Mar-2025 0800 GMT

All times are local.

Today

Winds: NE, 10-15 kts.
Waves: N, 2-3 feet, 5-6 sec.
No currents available.

Tonight

Winds: N, 20-25 kts.
Waves: N, 6-7 feet, 6-7 sec.
No currents available.

Friday

Winds: NE, 15-20 kts.
Waves: N, 3-4 feet, 5-6 sec.
No currents available.

Saturday Night

Winds: NW, 15-20 kts.
Waves: N, 8-9 feet, 8-9 sec.
No currents available.

Saturday

Winds: N, 30-35 kts.
Waves: N, 10-11 feet, 8-9 sec.
No currents available.

Sunday Night

Winds: N, 20-25 kts.
Waves: NE, 6-7 feet, 8-9 sec.
No currents available.

Sunday

Winds: N, 20-25 kts.
Waves: NE, 6-7 feet, 8-9 sec.
No currents available.

Monday Night

Winds: NE, 10-15 kts.
Waves: NE, 1-2 feet, 6-7 sec.
No currents available.

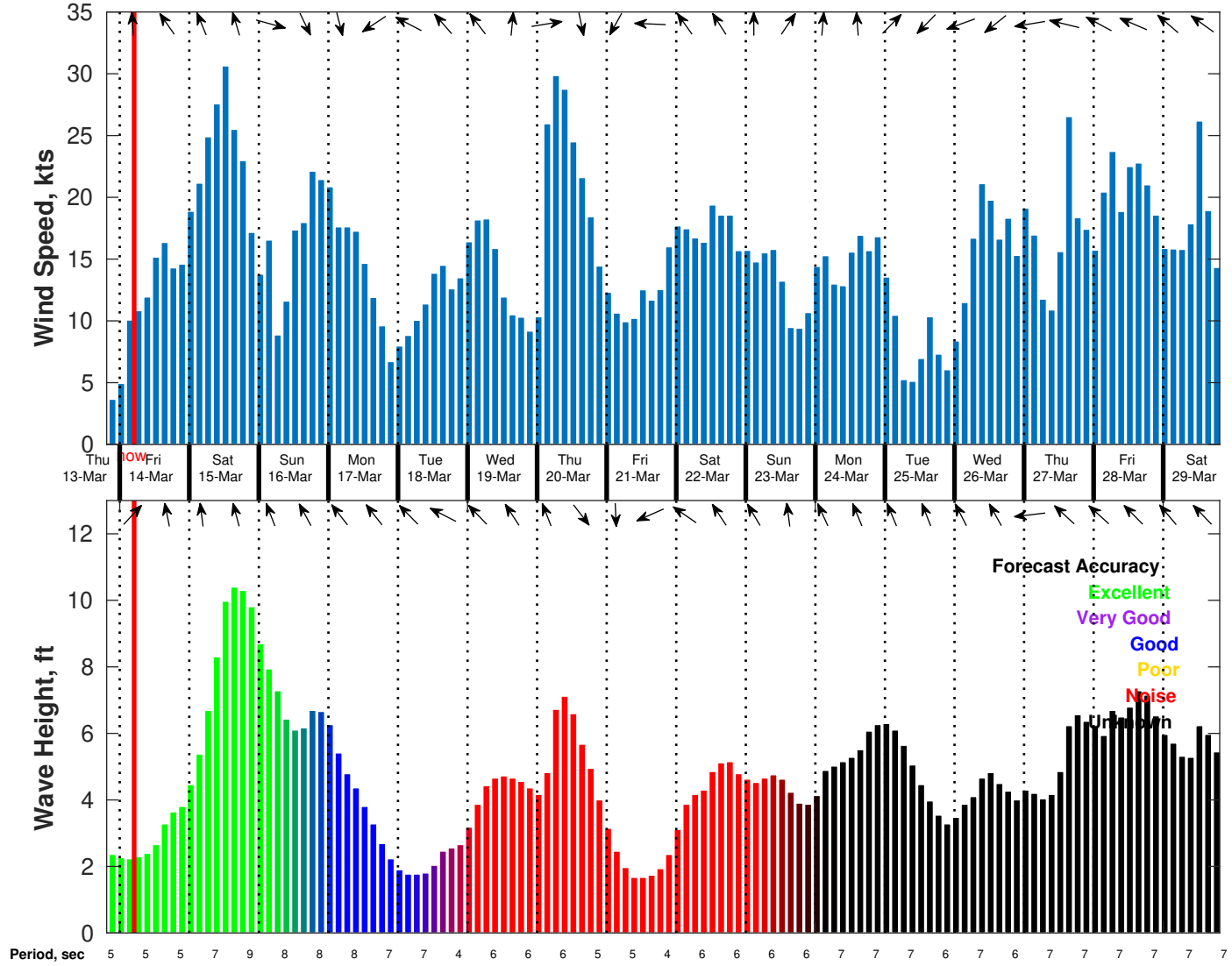
Monday

Winds: E, 15-20 kts.
Waves: NE, 4-5 feet, 7-8 sec.
No currents available.

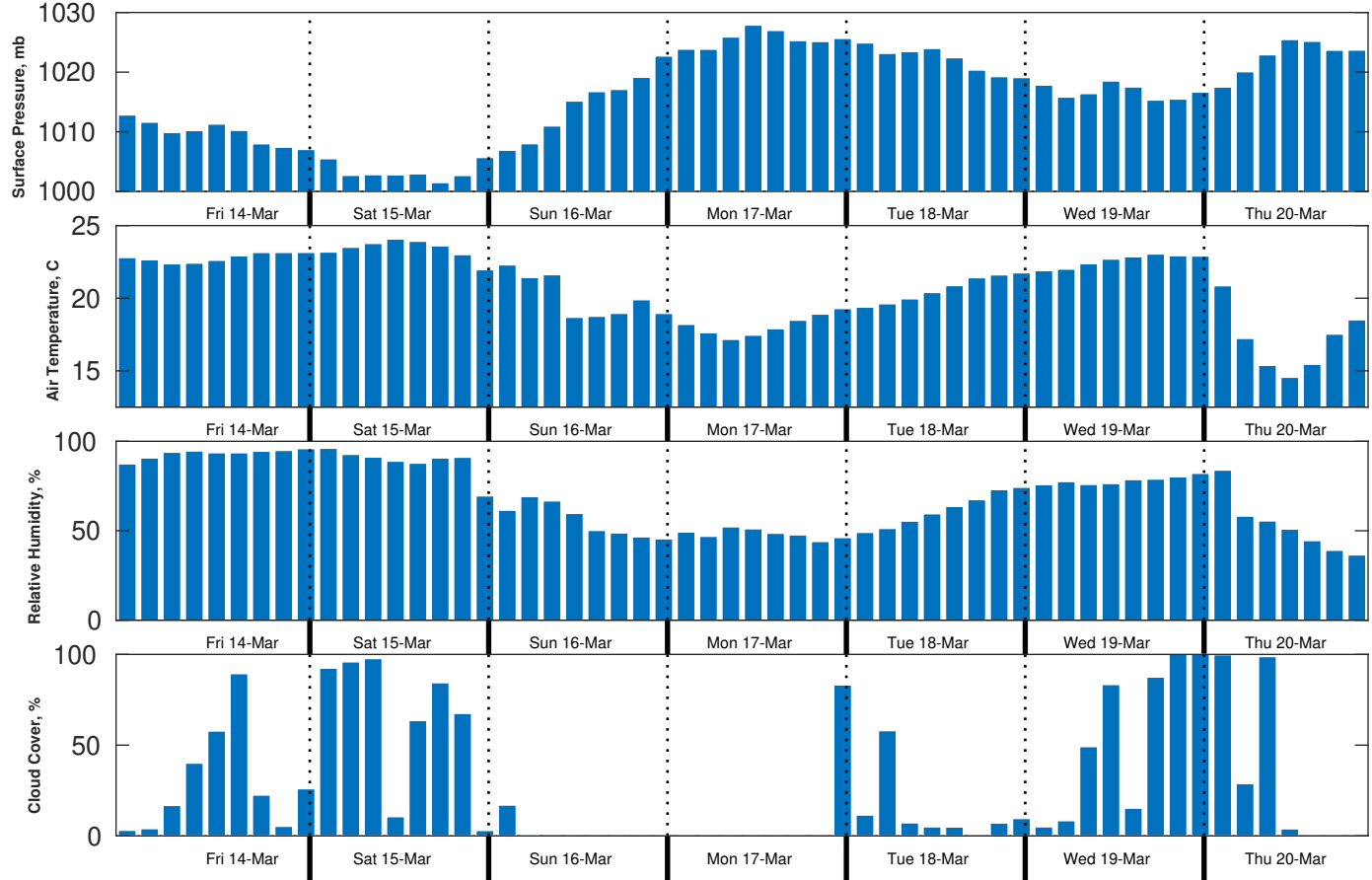
Tuesday Night

Winds: NE, 15-20 kts.
Waves: NE, 4-5 feet, 5-6 sec.
No currents available.

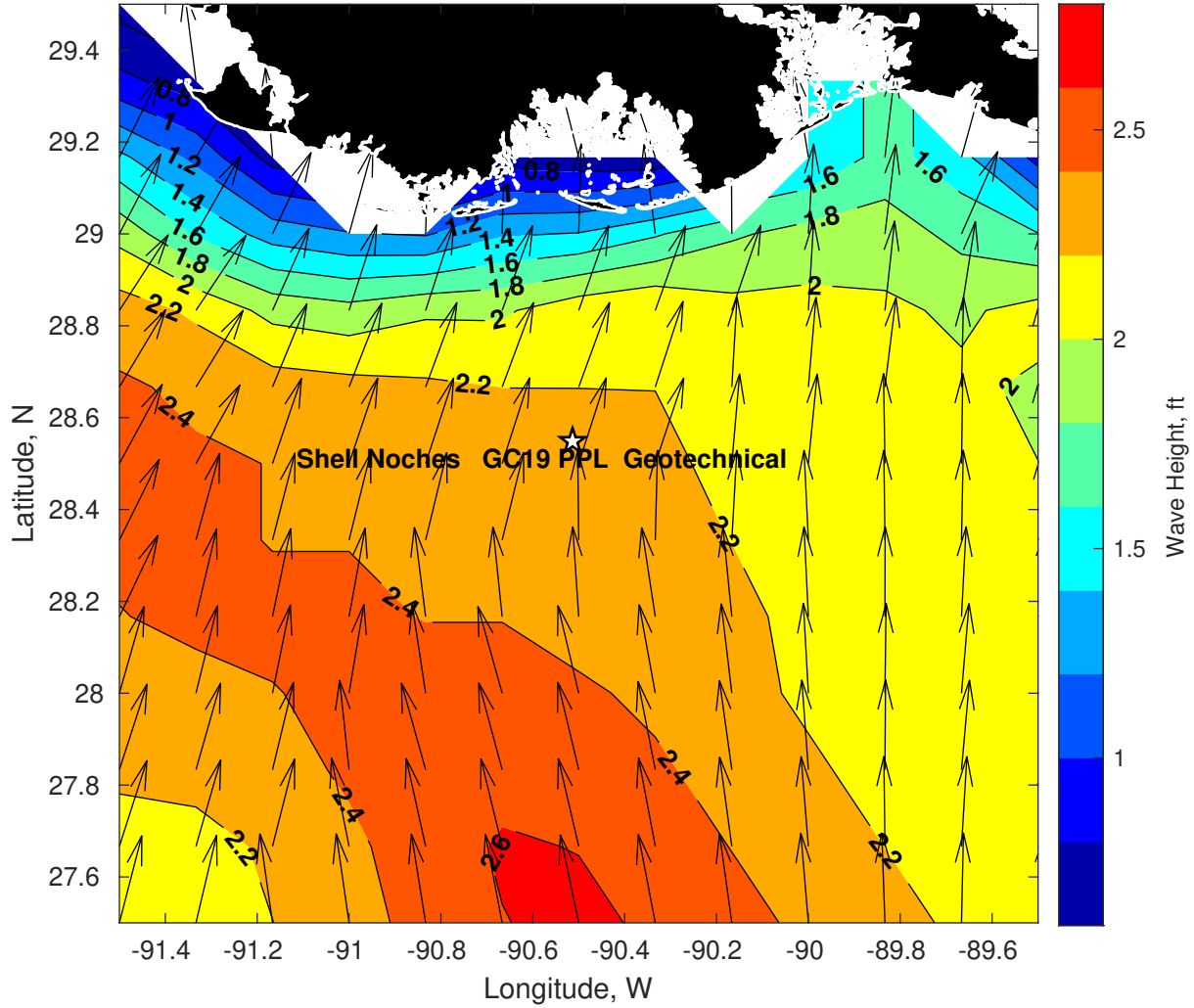
Wind & Wave Forecast for Shell Noches GC19 PPL Geotechnical from 13-Mar-2025 20:00:00 to 29-Mar-2025 20:00:00



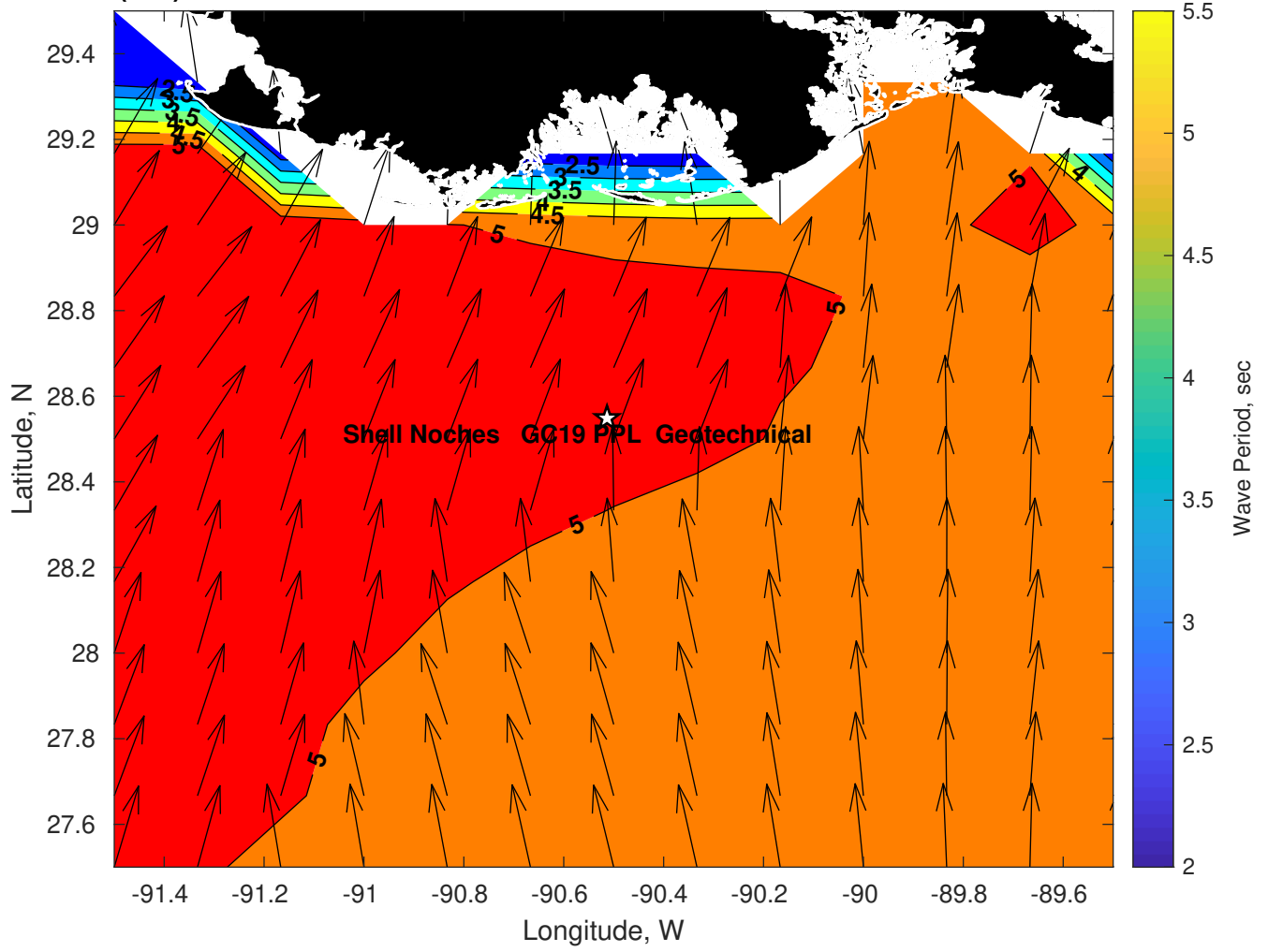
Met Forecast for Shell Noches GC19 PPL Geotechnical from 14-Mar-2025 00:00:00 to 21-Mar-2025 00:00:00



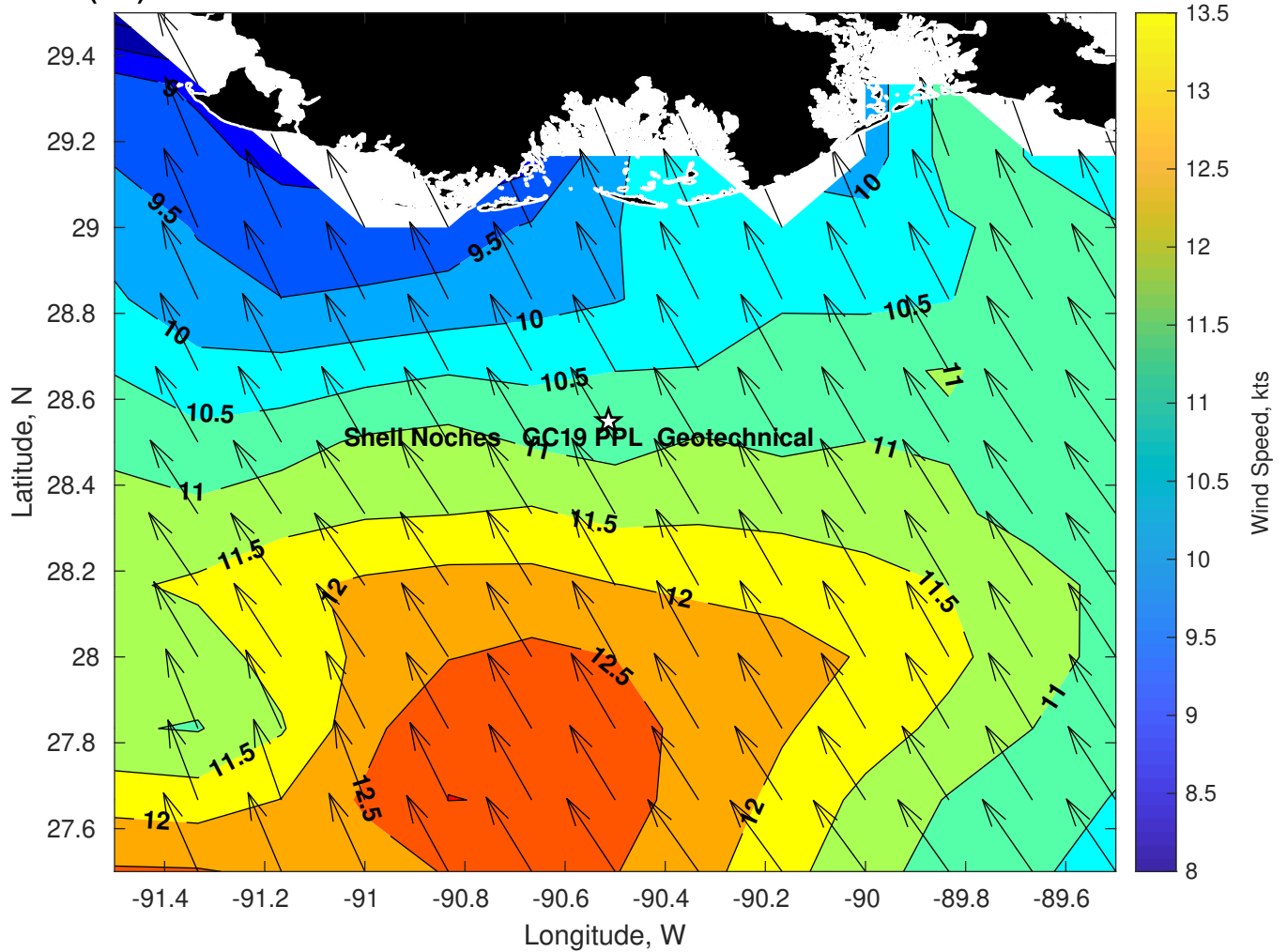
Wave Height (ft) for Shell Noches GC19 PPL Geotechnical at 14-Mar-2025 09:00:00



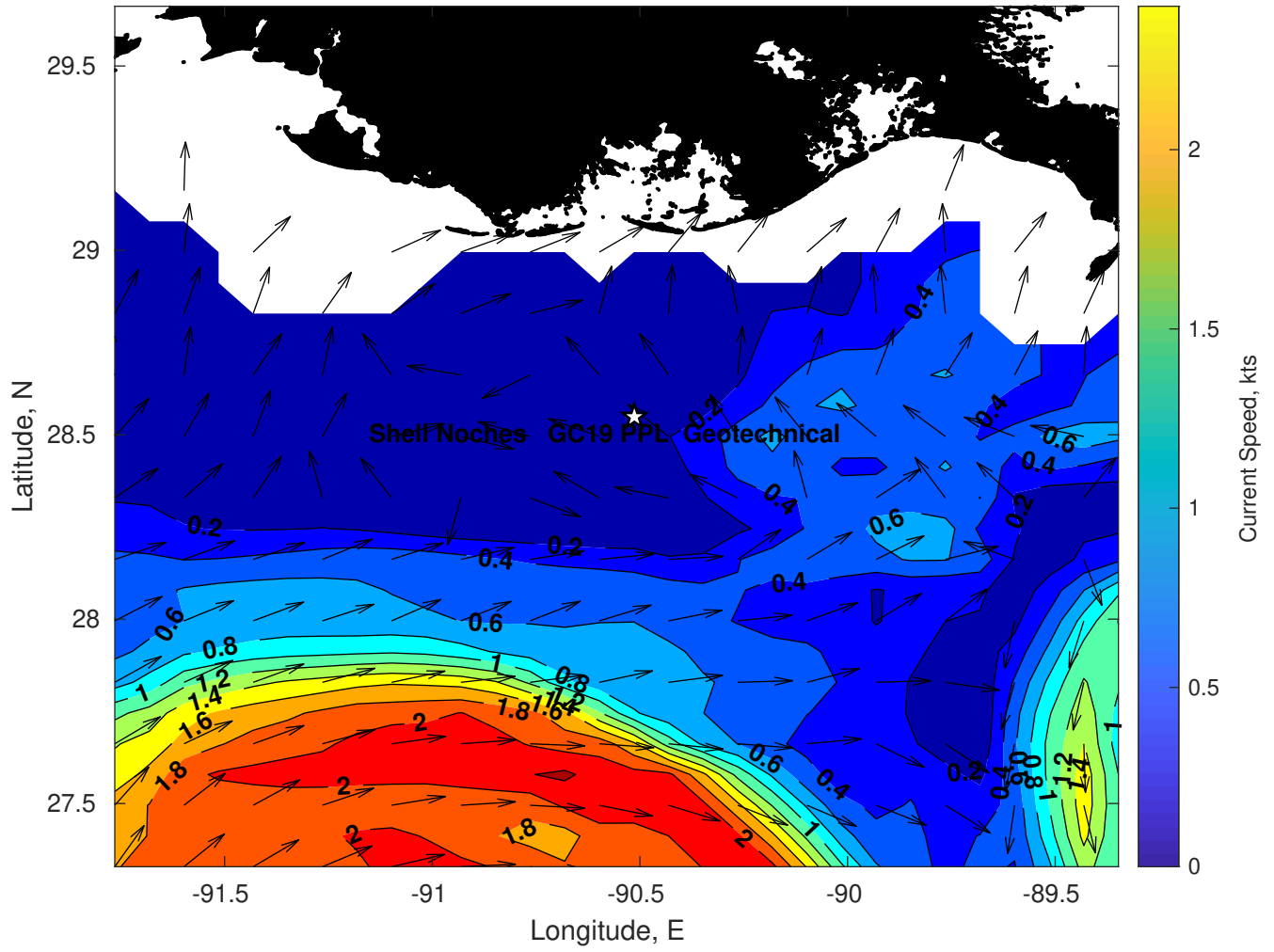
Wave Period (sec) for Shell Noches GC19 PPL Geotechnical at 14-Mar-2025 09:00:00



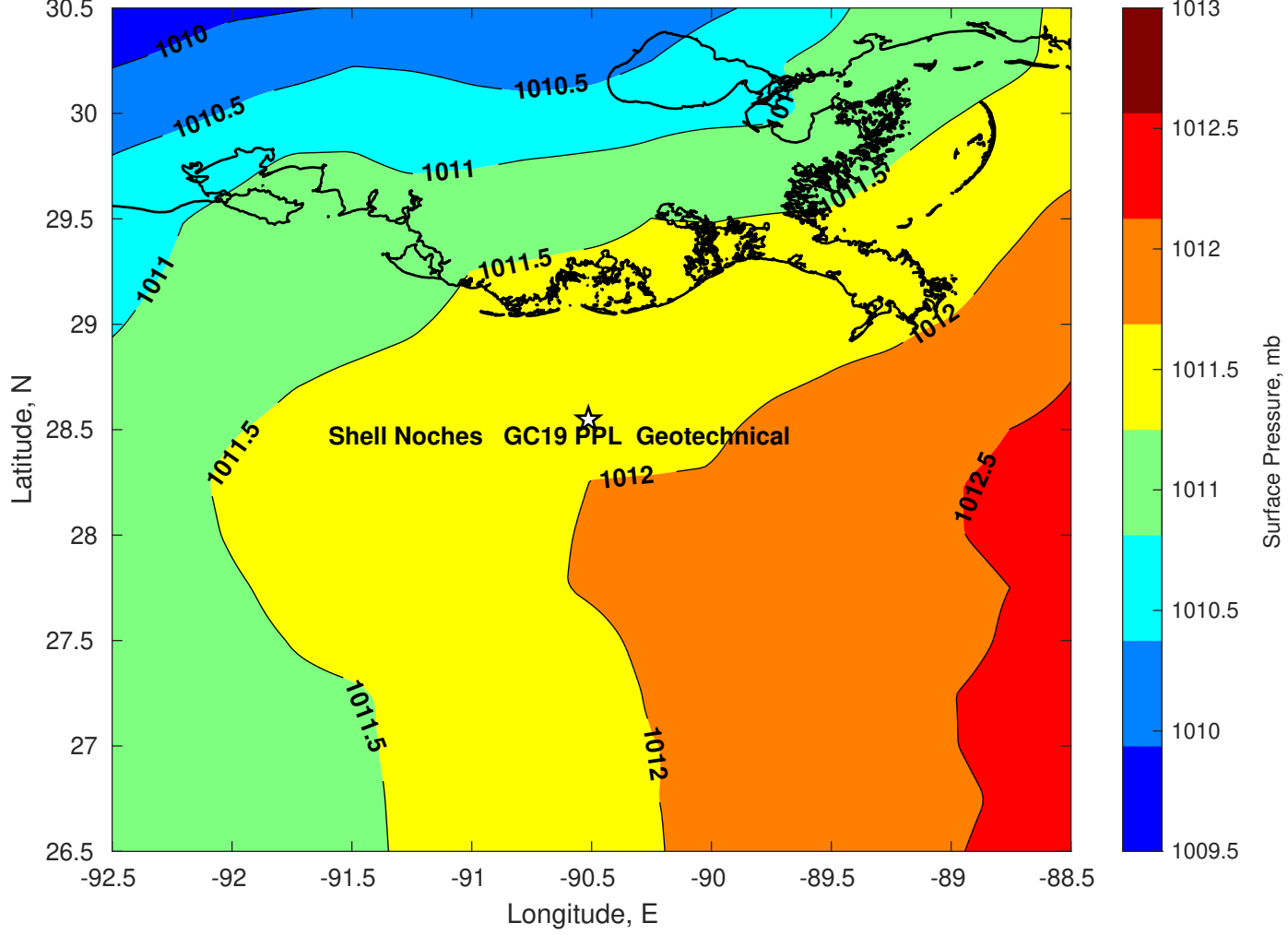
Winds (kts) for Shell Noches GC19 PPL Geotechnical at 14-Mar-2025 09:00:00



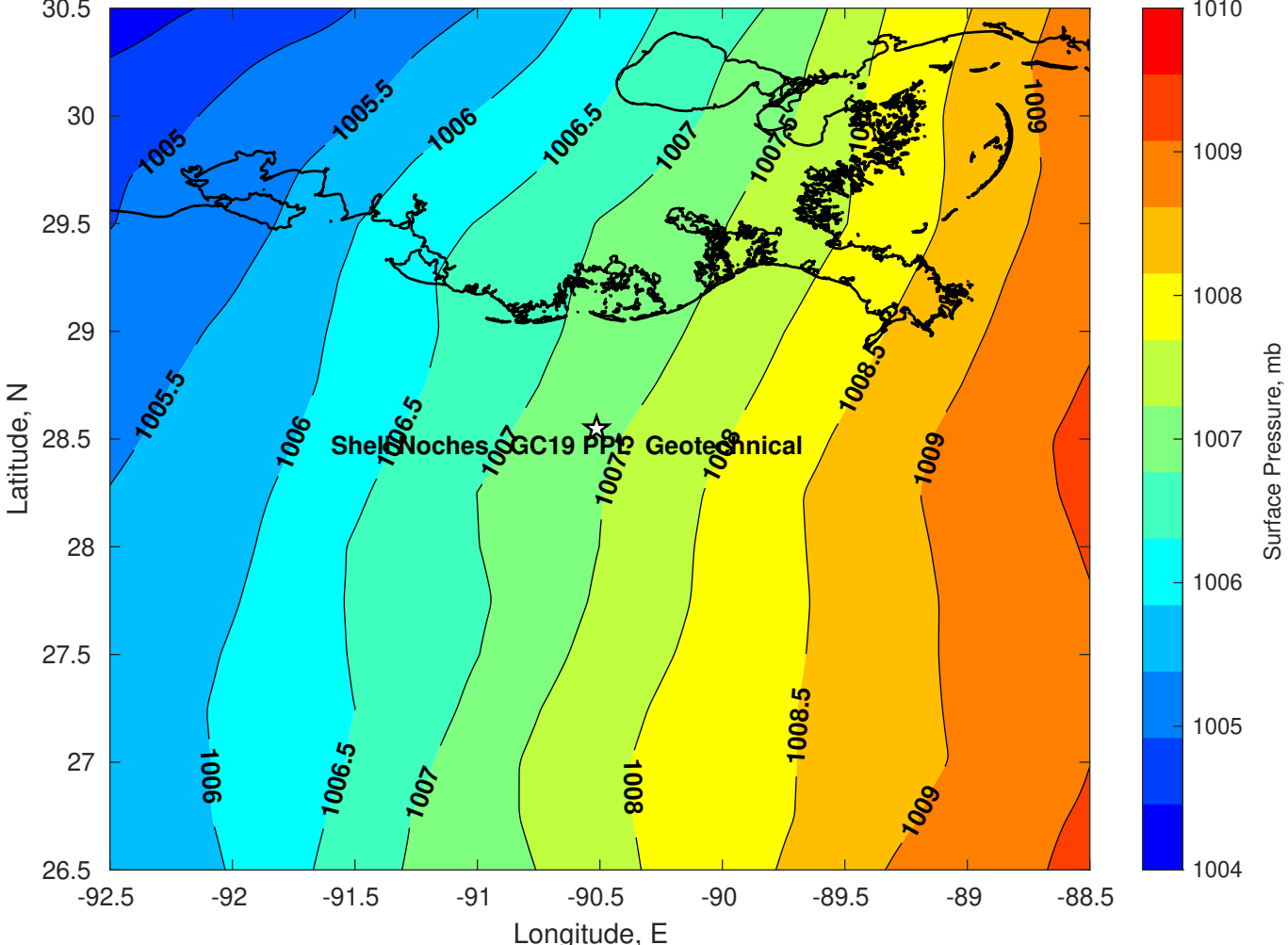
Surface Currents for Shell Noches GC19 PPL Geotechnical at 13-Mar-2025 00:00:00



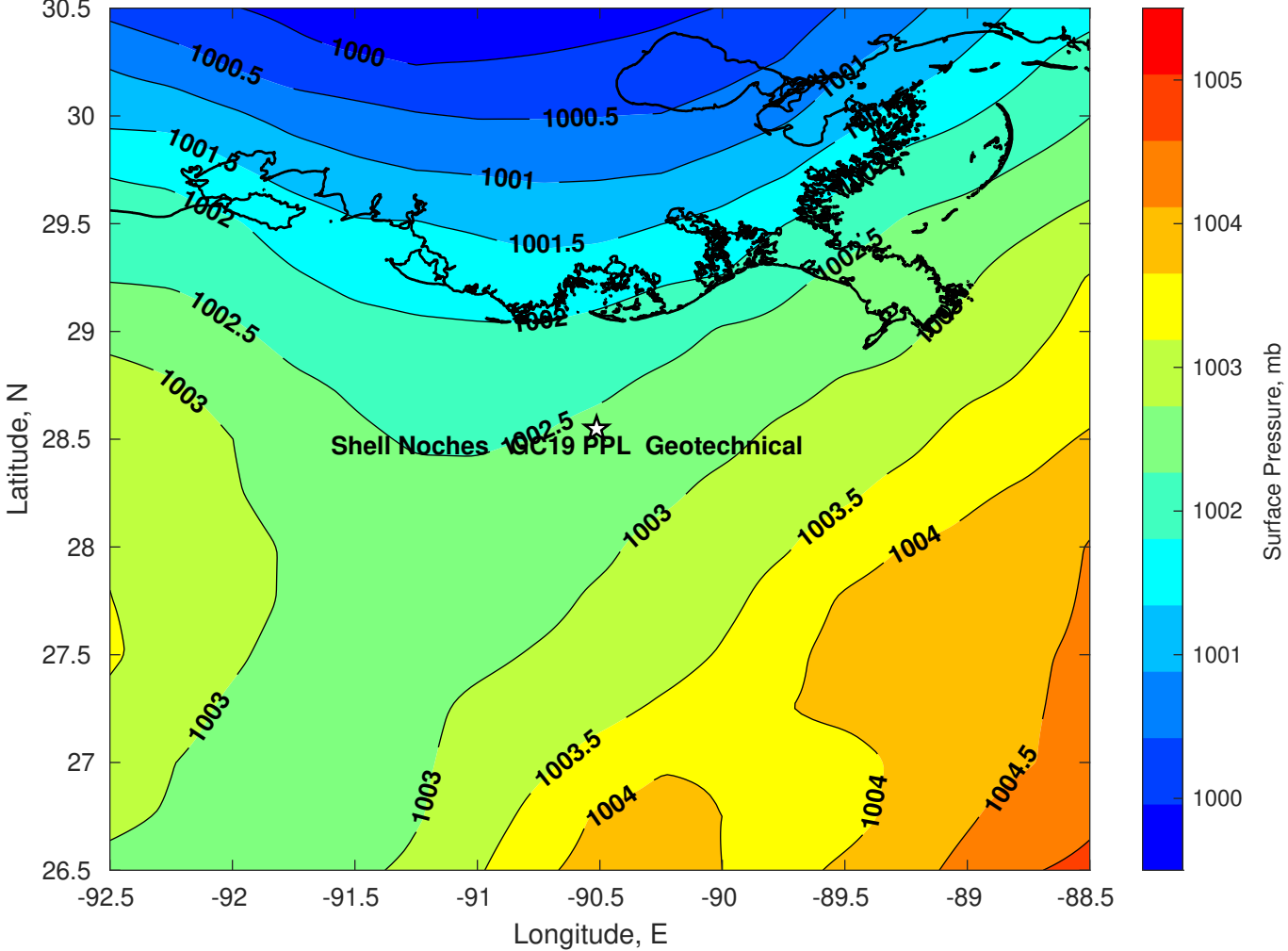
Surface Pressure (mb) for Shell Noches GC19 PPL Geotechnical at 14-Mar-2025 00:00:00



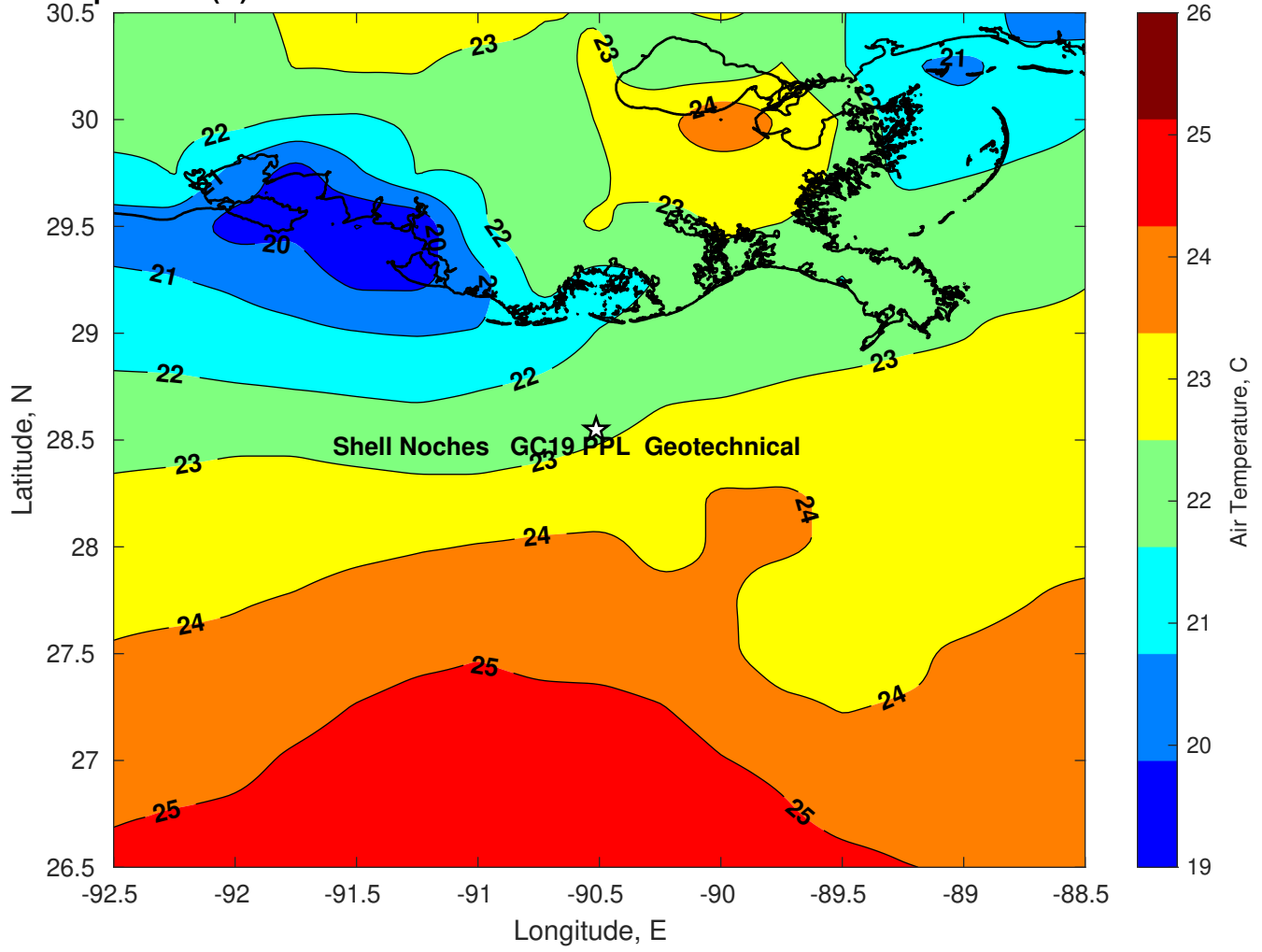
Surface Pressure (mb) for Shell Noches GC19 PPL Geotechnical at 15-Mar-2025 00:00:00



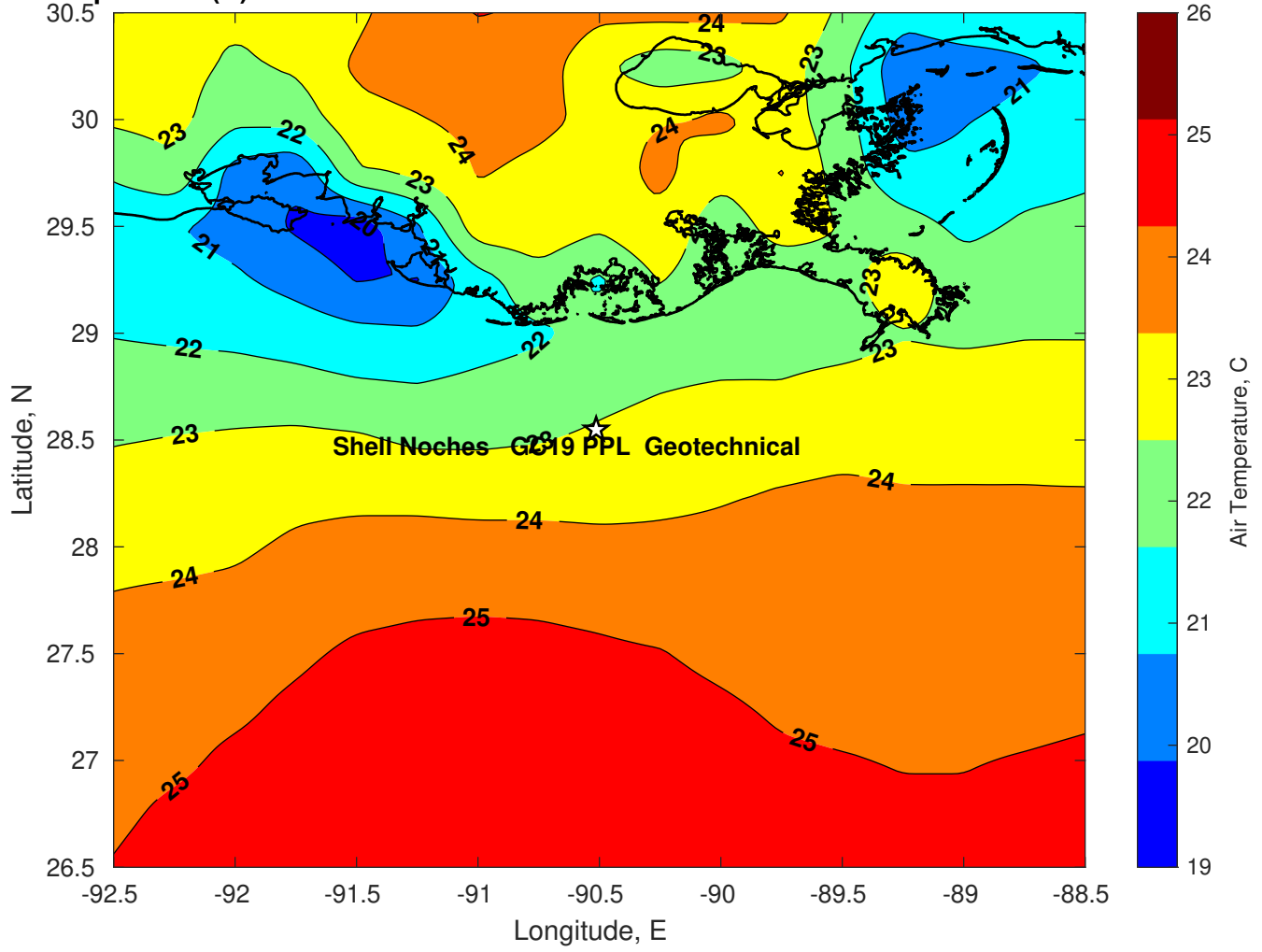
Surface Pressure (mb) for Shell Noches GC19 PPL Geotechnical at 16-Mar-2025 00:00:00



Air Temperature (C) for Shell Noches GC19 PPL Geotechnical at 14-Mar-2025



Air Temperature (C) for Shell Noches GC19 PPL Geotechnical at 14-Mar-2025



Air Temperature (C) for Shell Noches GC19 PPL Geotechnical at 14-Mar-2025

