

\*\*\*\*\*

Marine Weather Forecast for CSA (ONHYM) PPL EBS - Cote d'Ivoire  
Forecast valid as of 19-Mar-2025 0800 GMT

\*\*\*\*\*

All times are local.

Today

Winds: NW, 10-15 kts.  
Waves: N, 3-4 feet, 13-14 sec.  
No currents available.

Tonight

Winds: NW, 10-15 kts.  
Waves: N, 3-4 feet, 13-14 sec.  
No currents available.

Thursday

Winds: NW, 10-15 kts.  
Waves: N, 3-4 feet, 12-13 sec.  
No currents available.

Thursday Night

Winds: NW, 10-15 kts.  
Waves: N, 3-4 feet, 12-13 sec.  
No currents available.

Friday

Winds: NW, 10-15 kts.  
Waves: N, 3-4 feet, 12-13 sec.  
No currents available.

Friday Night

Winds: NW, 10-15 kts.  
Waves: N, 3-4 feet, 11-12 sec.  
No currents available.

Saturday

Winds: NW, 10-15 kts.  
Waves: N, 3-4 feet, 11-12 sec.  
No currents available.

Saturday Night

Winds: NW, 10-15 kts.  
Waves: N, 3-4 feet, 12-13 sec.  
No currents available.

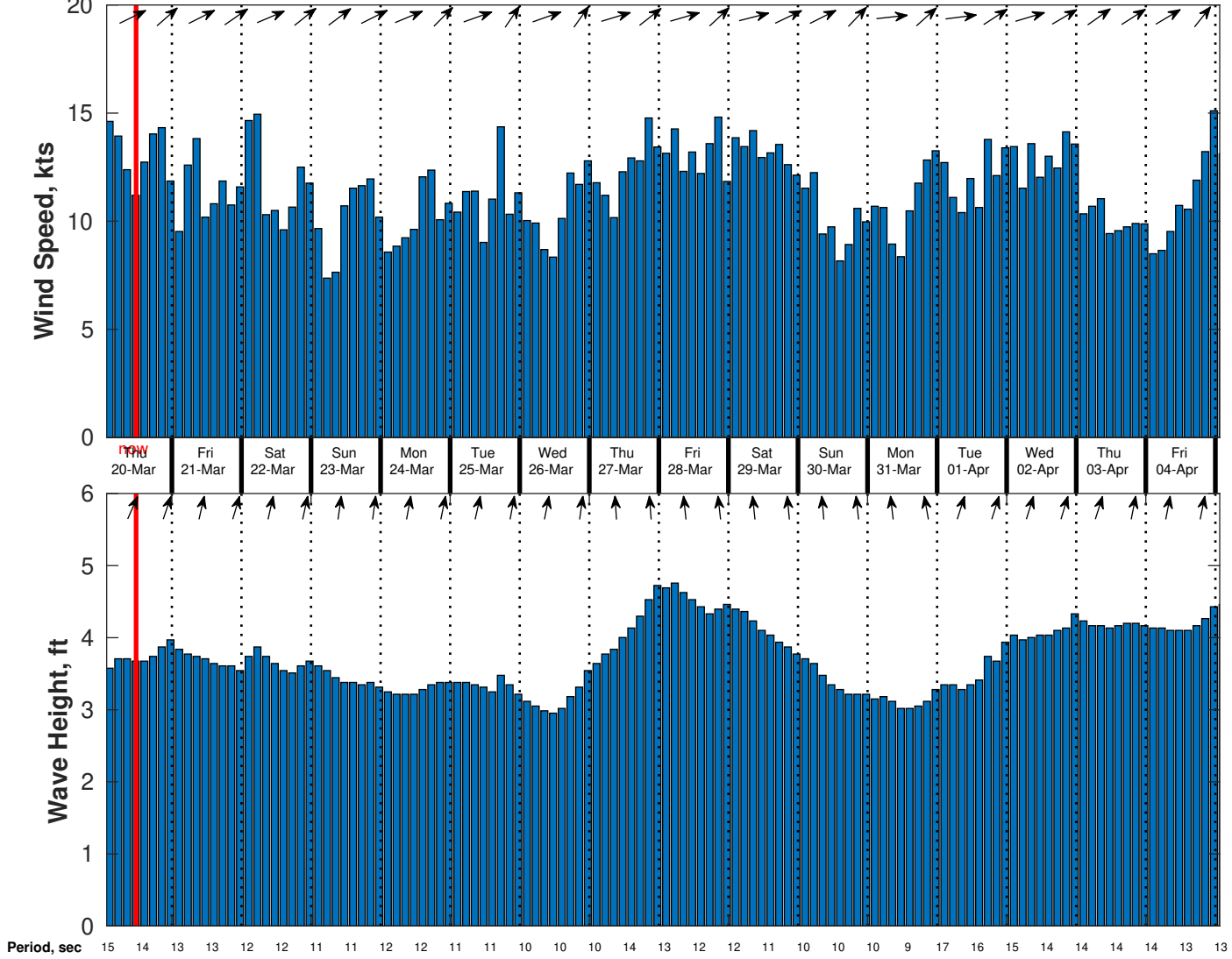
Sunday

Winds: NW, 10-15 kts.  
Waves: N, 3-4 feet, 11-12 sec.  
No currents available.

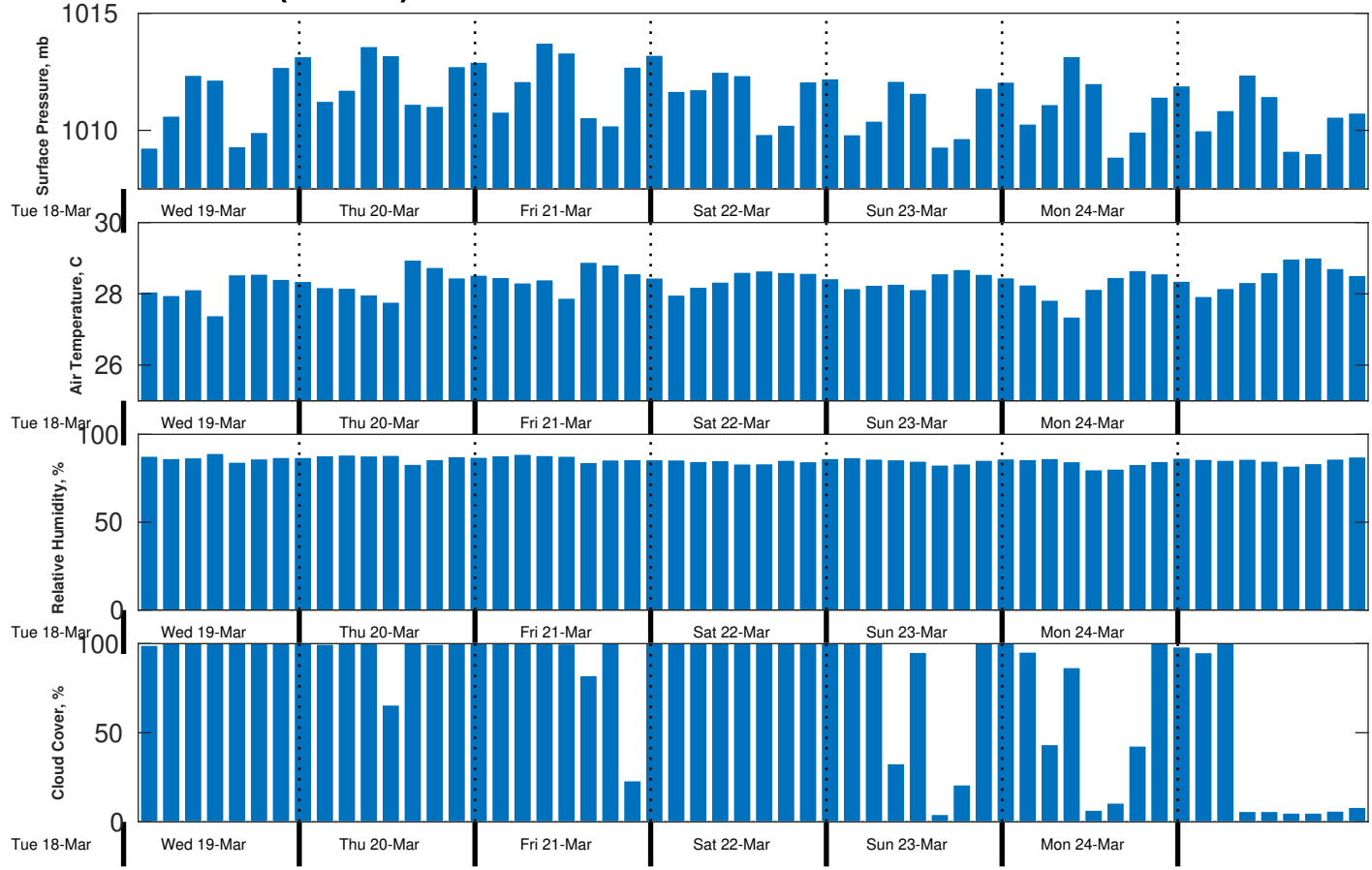
Sunday Night

Winds: NW, 10-15 kts.  
Waves: N, 3-4 feet, 11-12 sec.  
No currents available.

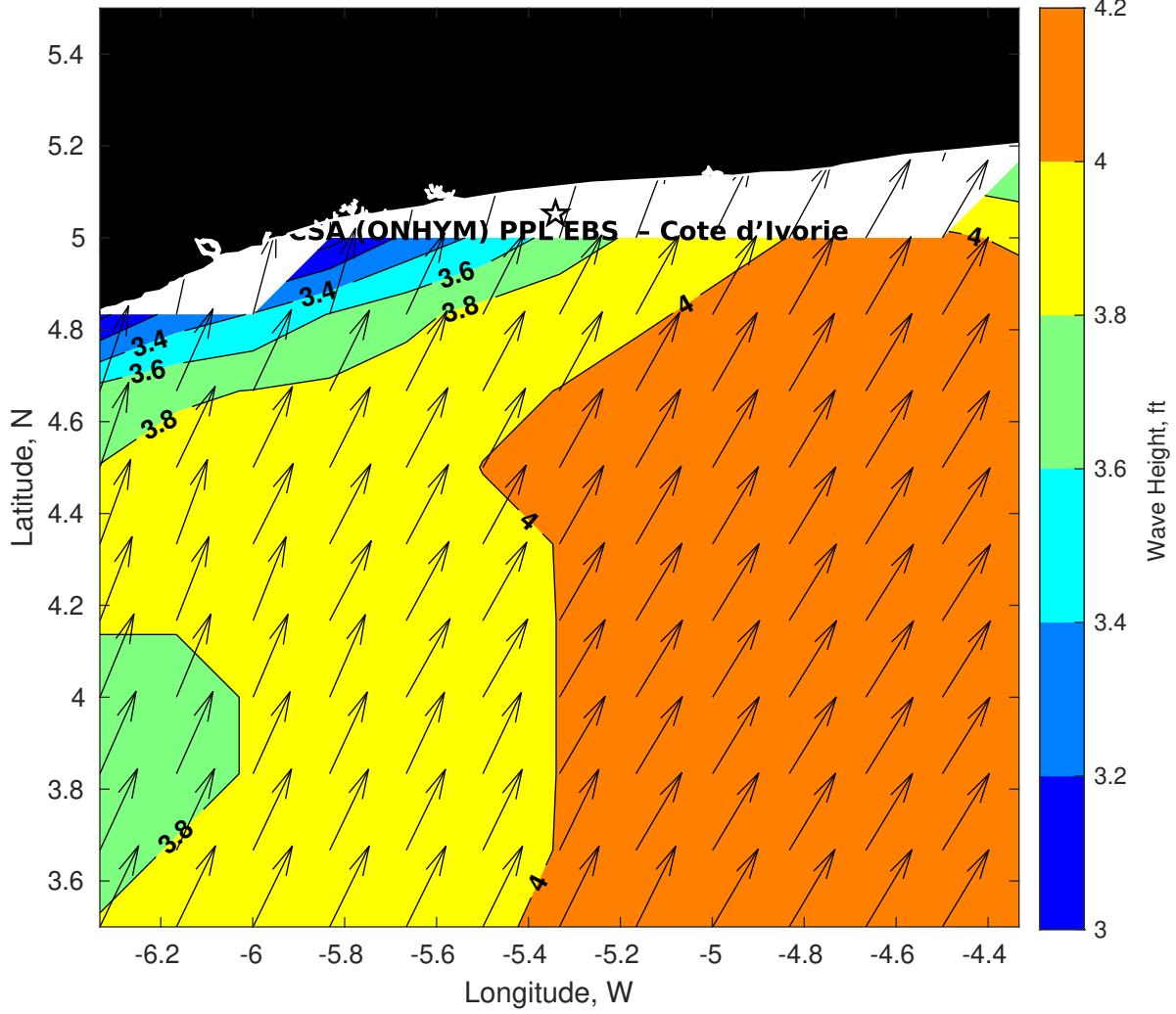
**Wind & Wave Forecast for CSA (ONHYM) PPL EBS - Cote d'Ivoire from 19-Mar-2025 01:00:00 to 04-Apr-2025 01:00:00**



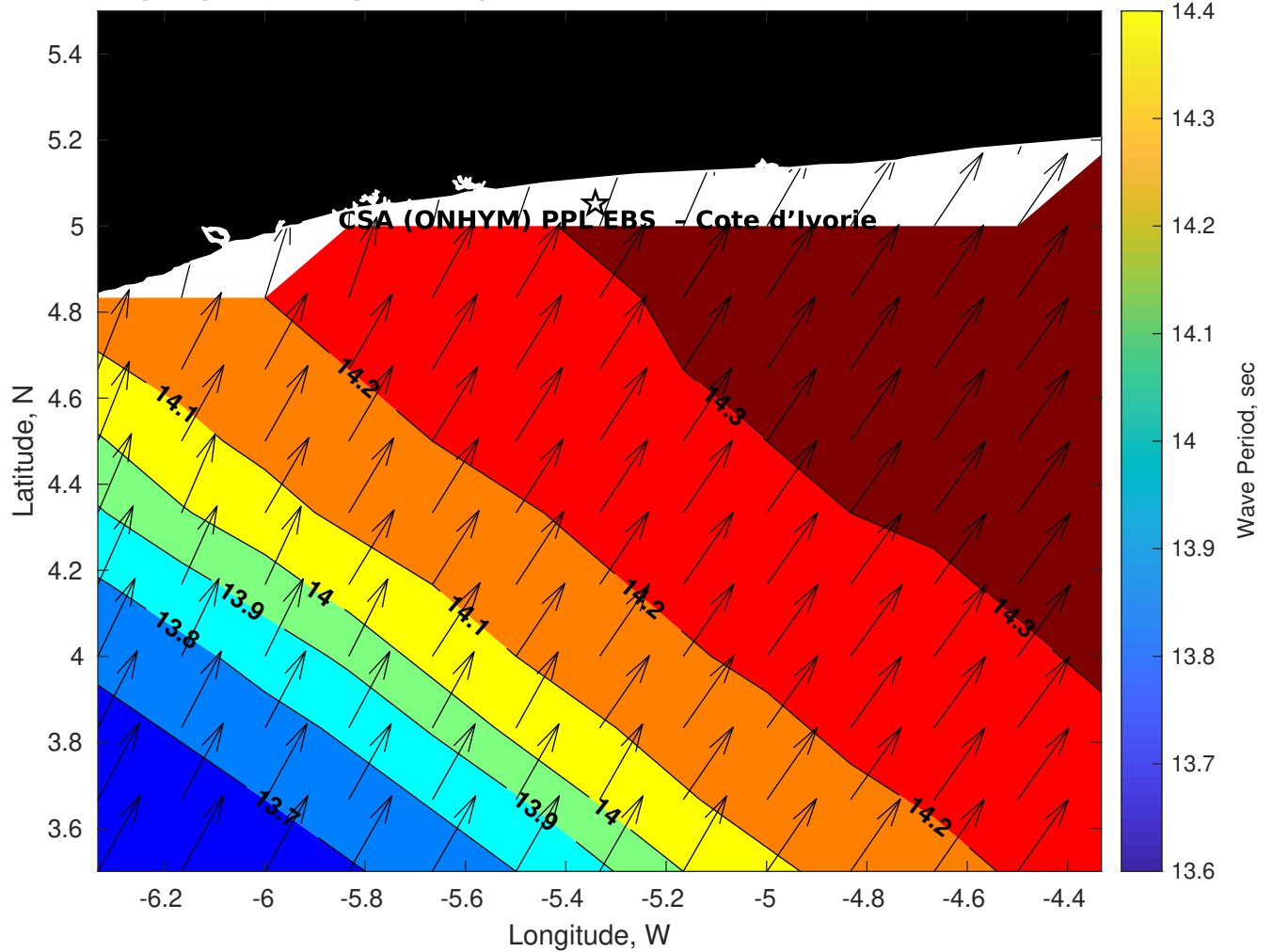
### Met Forecast for CSA (ONHYM) PPL EBS - Cote d'Ivoire from 19-Mar-2025 00:00:00 to 26-Mar-2025 00:00:00



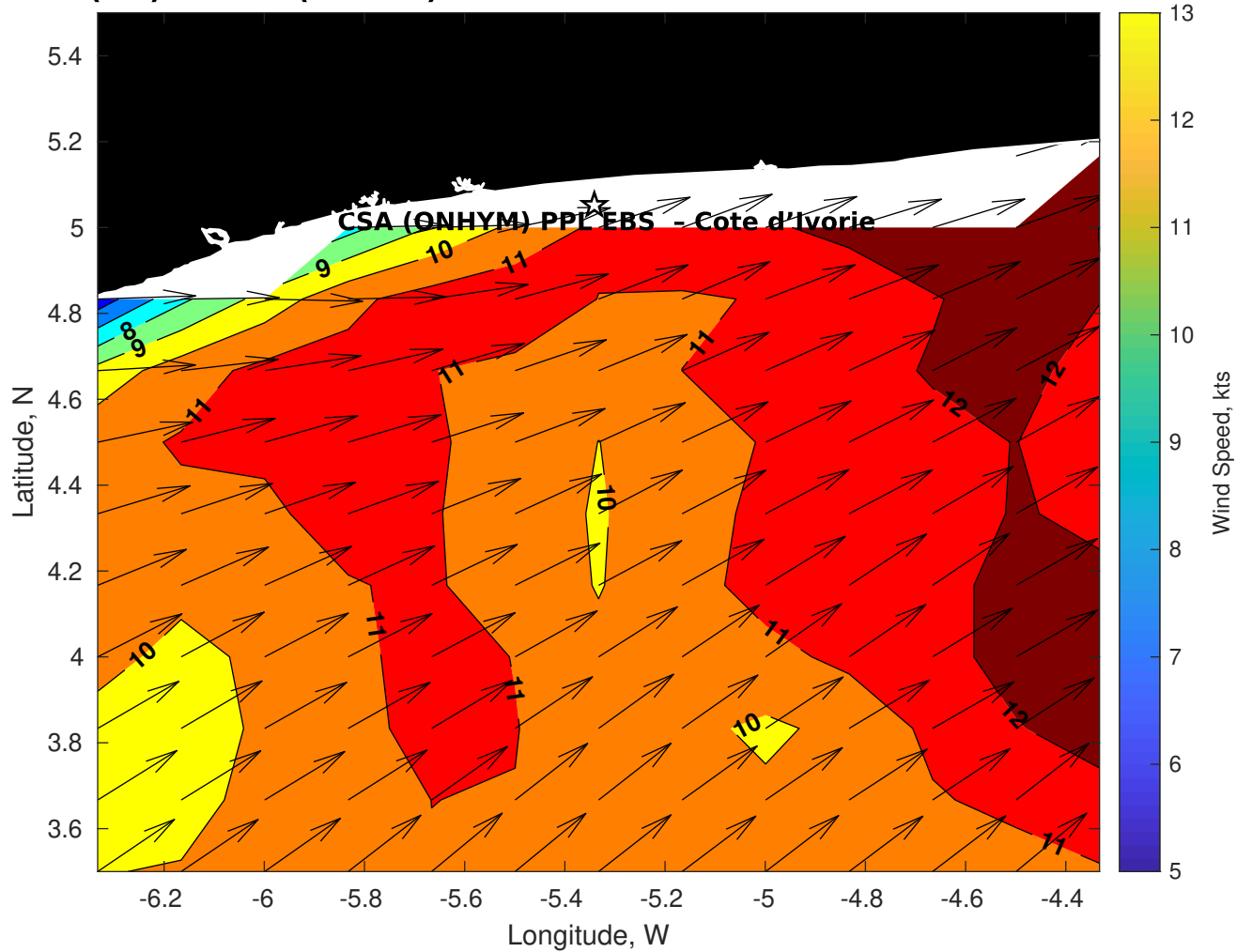
**Wave Height (ft) for CSA (ONHYM) PPL EBS - Cote d'Ivoire at 19-Mar-2025 09:00:00**



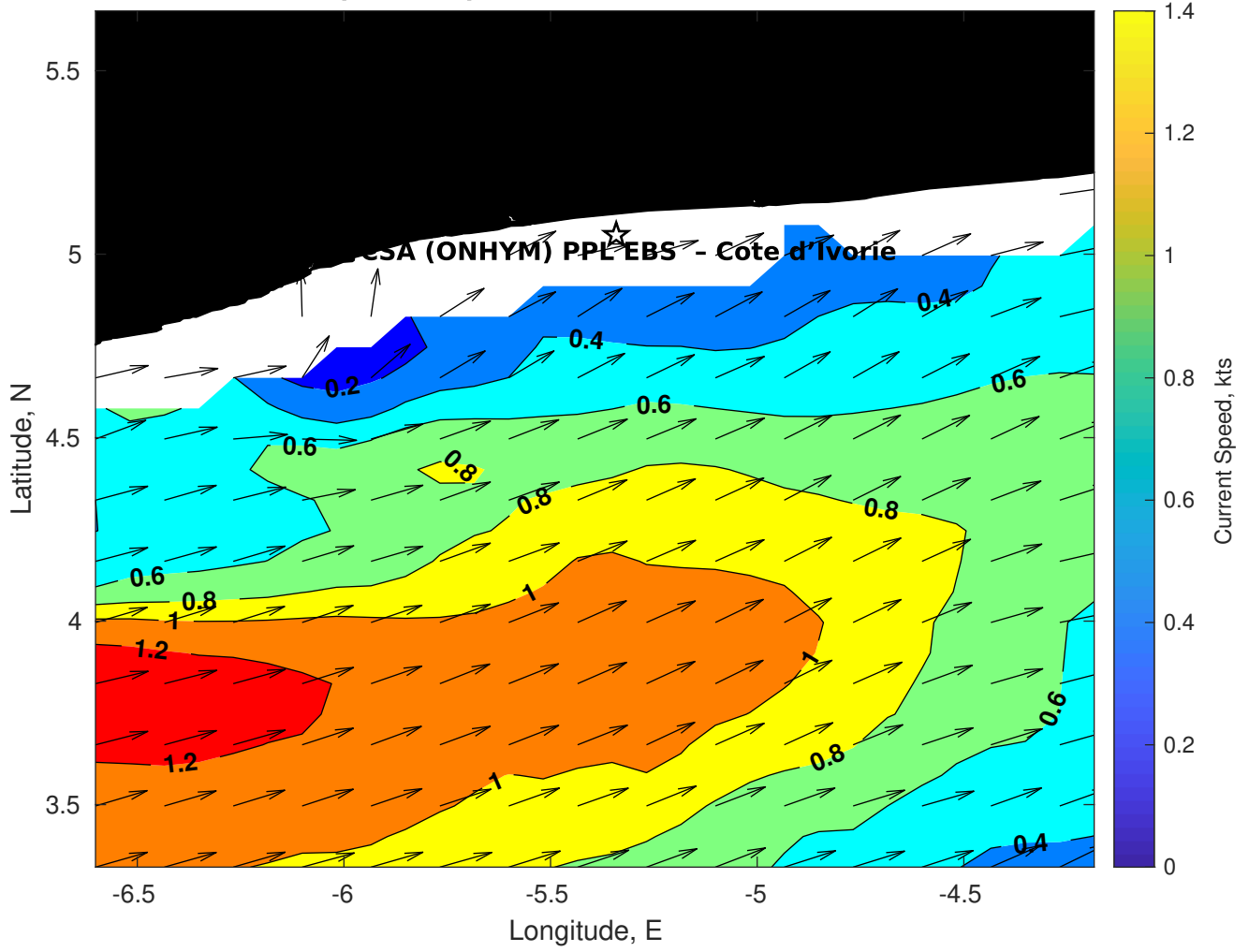
**Wave Period (sec) for CSA (ONHYM) PPL EBS - Cote d'Ivoire at 19-Mar-2025 09:00:00**



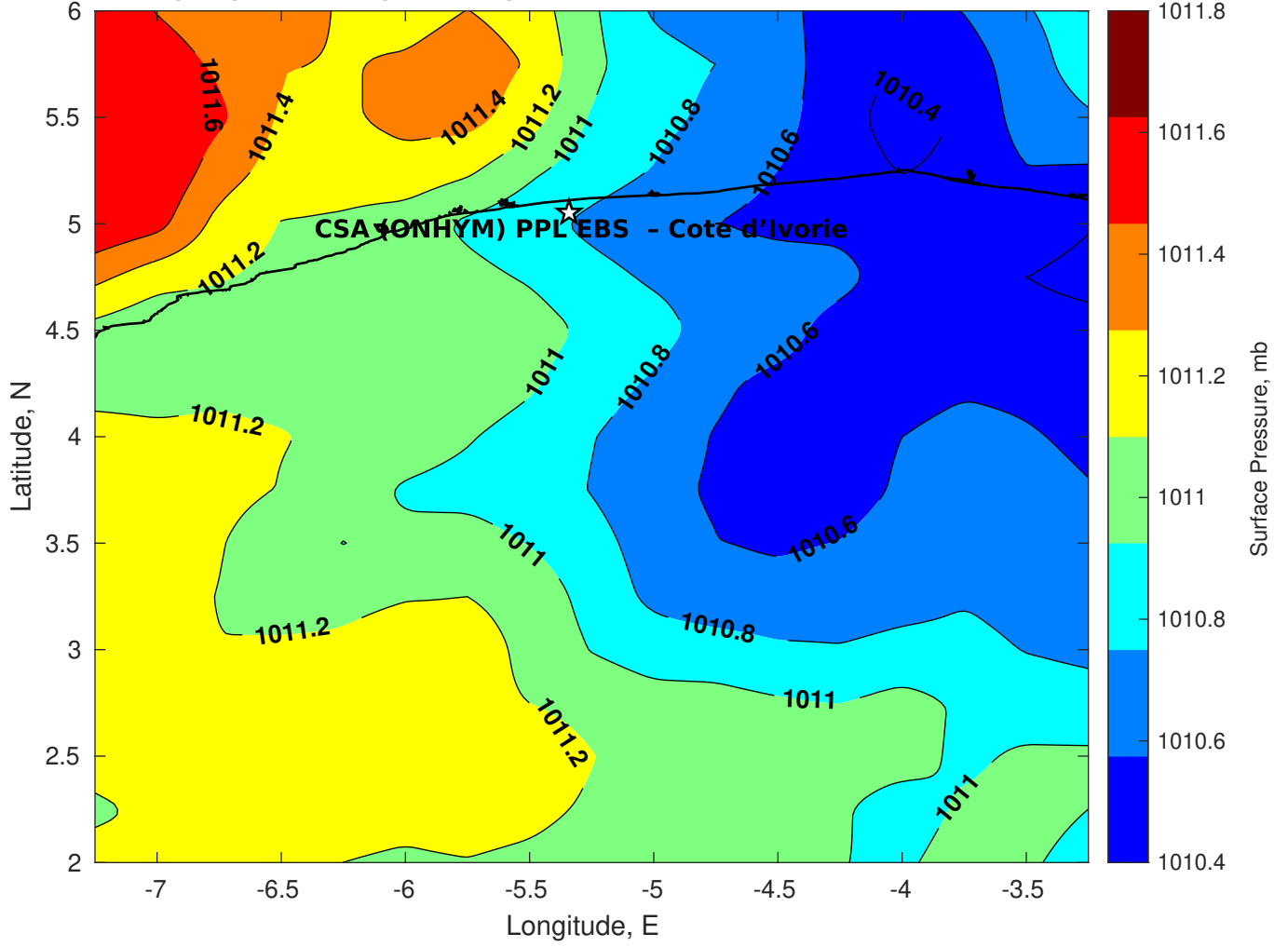
### Winds (kts) for CSA (ONHYM) PPL EBS - Cote d'Ivoire at 19-Mar-2025 09:00:00



Surface Currents for CSA (ONHYM) PPL EBS - Cote d'Ivoire at 18-Mar-2025 00:00:00

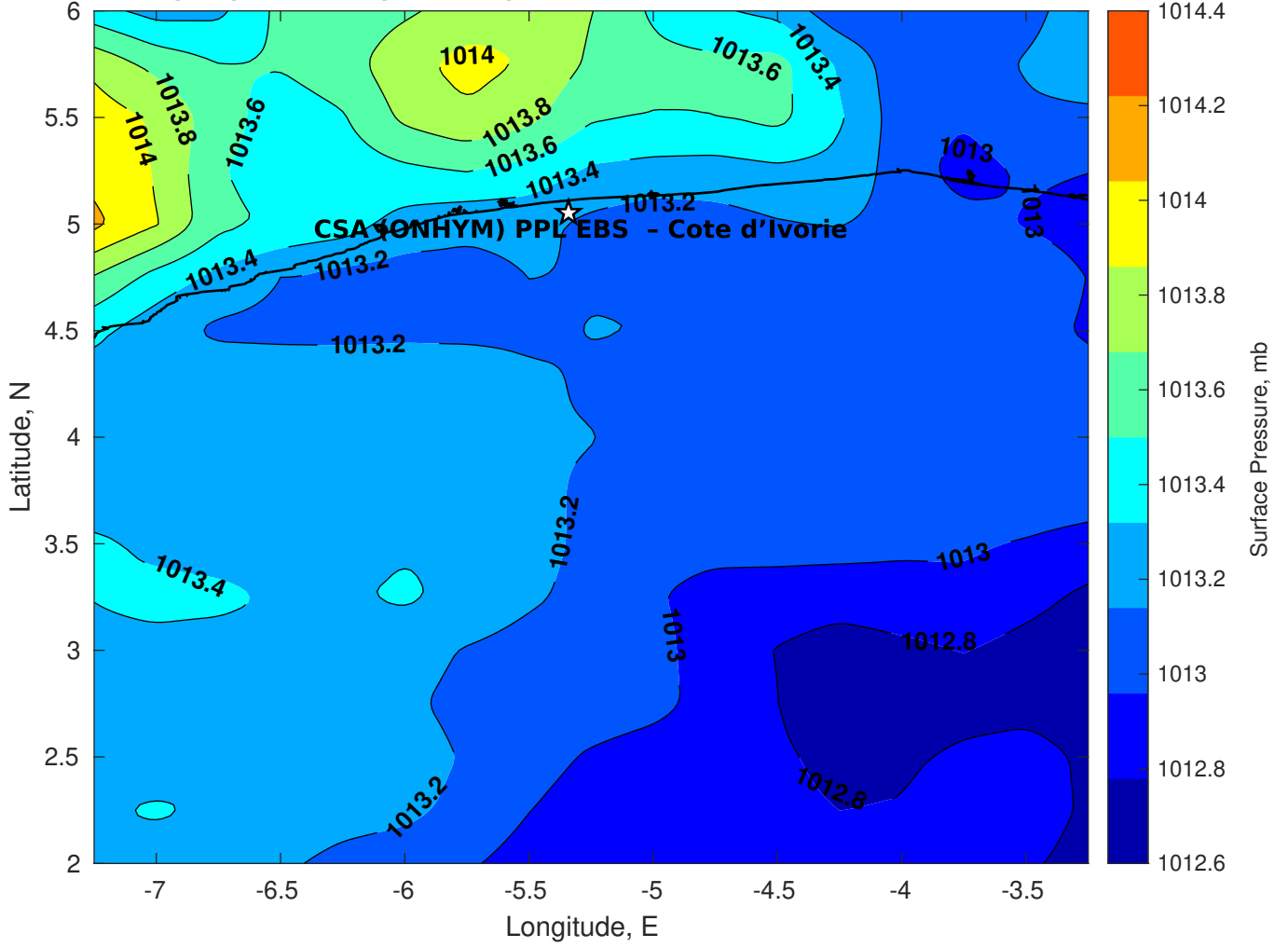


Surface Pressure (mb) for CSA (ONHYM) PPL EBS - Cote d'Ivoire at 19-Mar-2025 00:00:00

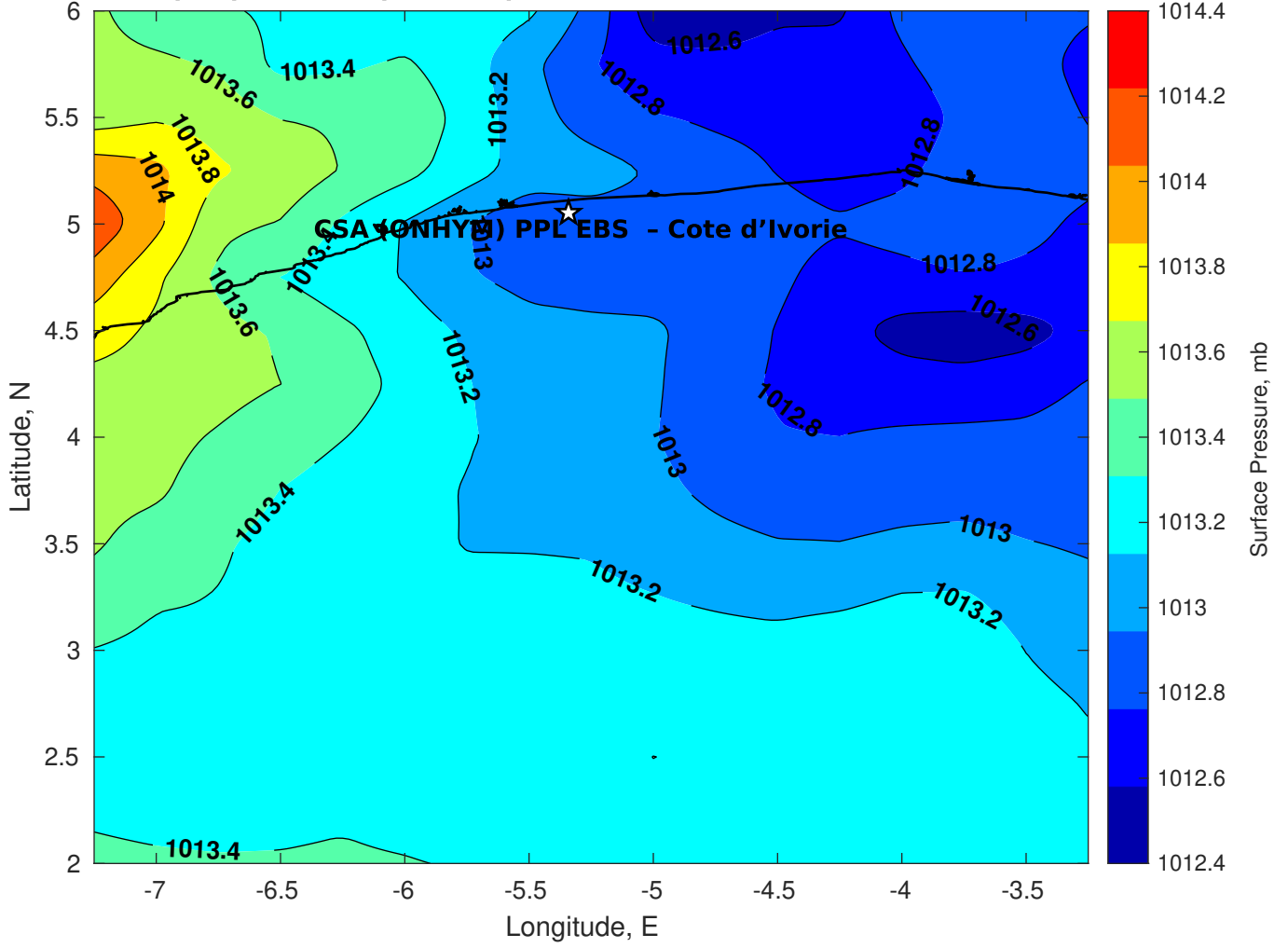




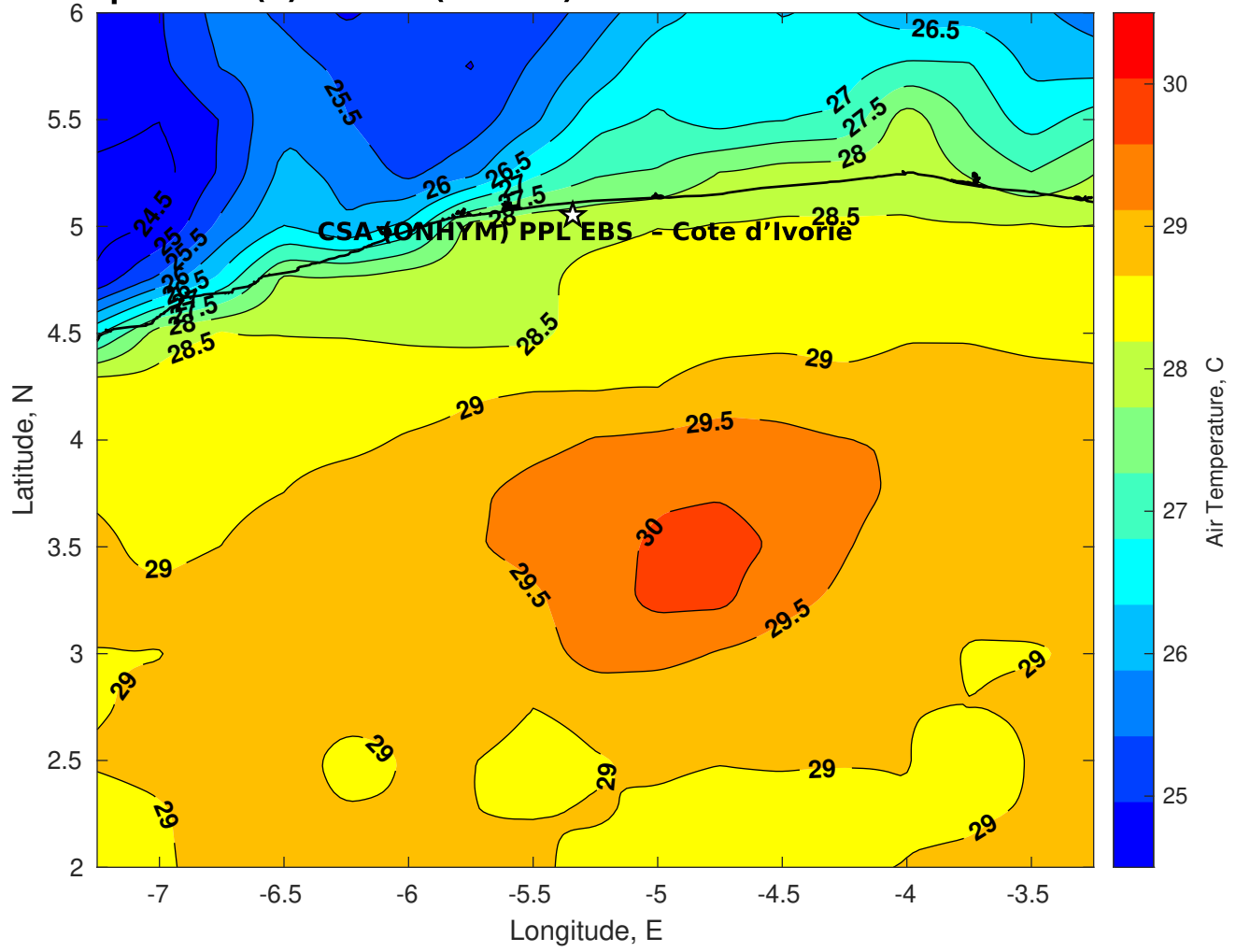
**Surface Pressure (mb) for CSA (ONHYM) PPL EBS - Cote d'Ivoire at 20-Mar-2025 00:00:00**



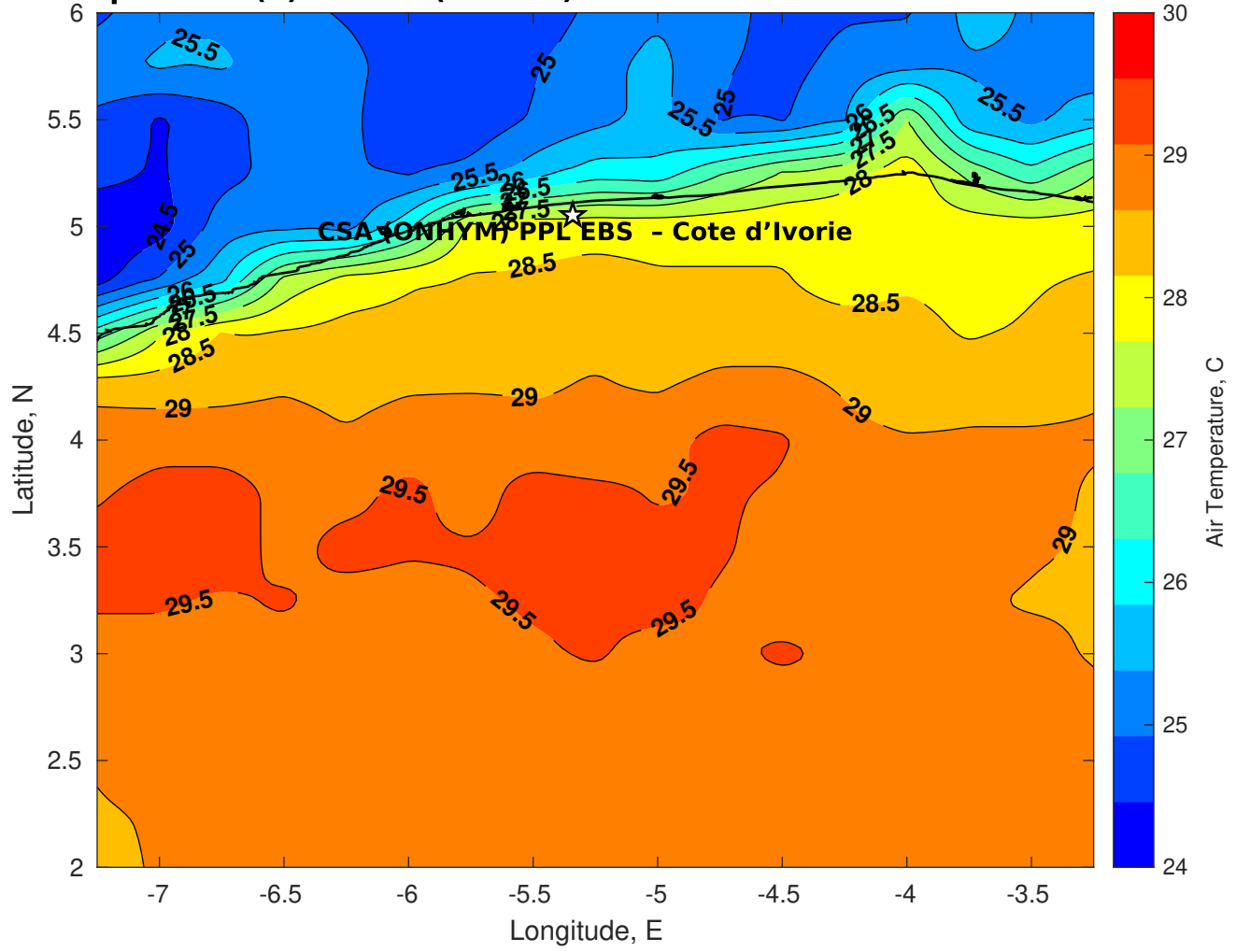
Surface Pressure (mb) for CSA (ONHYM) PPL EBS - Cote d'Ivoire at 21-Mar-2025 00:00:00



**Air Temperature (C) for CSA (ONHYM) PPL EBS - Cote d'Ivoire at 19-Mar-2025**



**Air Temperature (C) for CSA (ONHYM) PPL EBS - Cote d'Ivoire at 19-Mar-2025**



**Air Temperature (C) for CSA (ONHYM) PPL EBS - Cote d'Ivoire at 19-Mar-2025**

