

\*\*\*\*\*

Marine Weather Forecast for CSA (ONHYM) PPL EBS - Senegal

Forecast valid as of 19-Mar-2025 2000 GMT

\*\*\*\*\*

All times are local.

Today

Winds: N, 15-20 kts.

Waves: N, 7-8 feet, 12-13 sec.

Currents: S, less than 0.5 knot.

Tonight

Winds: N, 15-20 kts.

Waves: NW, 6-7 feet, 13-14 sec.

Currents: S, less than 0.5 knot.

Thursday

Winds: N, 15-20 kts.

Waves: N, 7-8 feet, 11-12 sec.

Currents: SW, less than 0.5 knot.

Friday Night

Winds: N, 15-20 kts.

Waves: NW, 7-8 feet, 12-13 sec.

Currents: S, less than 0.5 knot.

Friday

Winds: N, 15-20 kts.

Waves: NW, 6-7 feet, 13-14 sec.

Currents: S, less than 0.5 knot.

Saturday Night

Winds: N, 15-20 kts.

Waves: N, 7-8 feet, 12-13 sec.

Currents: S, less than 0.5 knot.

Saturday

Winds: N, 15-20 kts.

Waves: N, 7-8 feet, 12-13 sec.

Currents: SW, less than 0.5 knot.

Sunday Night

Winds: N, 15-20 kts.

Waves: N, 6-7 feet, 9-10 sec.

Currents: SW, less than 0.5 knot.

Sunday

Winds: N, 15-20 kts.

Waves: N, 7-8 feet, 11-12 sec.

Currents: SW, less than 0.5 knot.

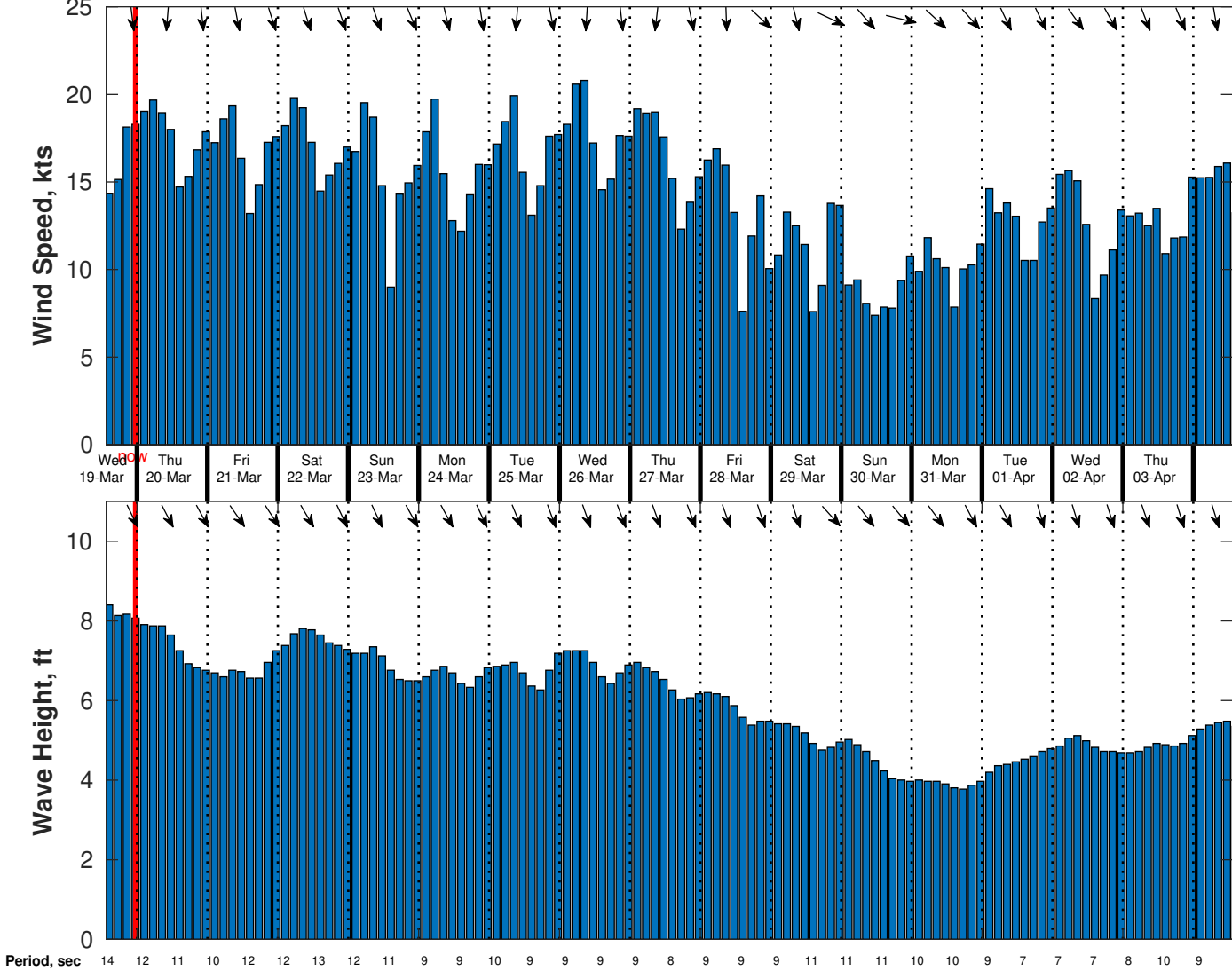
Monday Night

Winds: N, 15-20 kts.

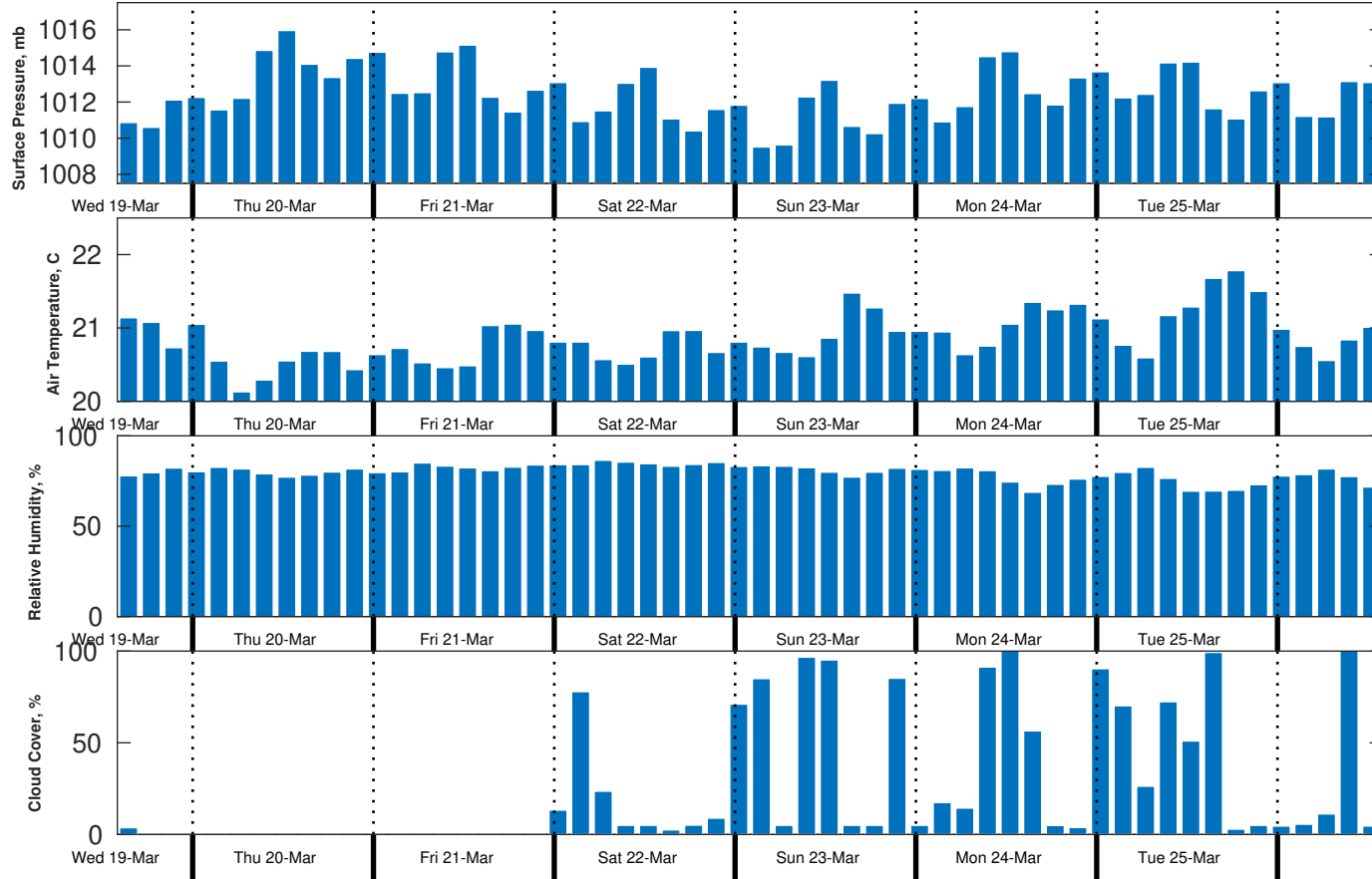
Waves: N, 6-7 feet, 9-10 sec.

Currents: SW, less than 0.5 knot.

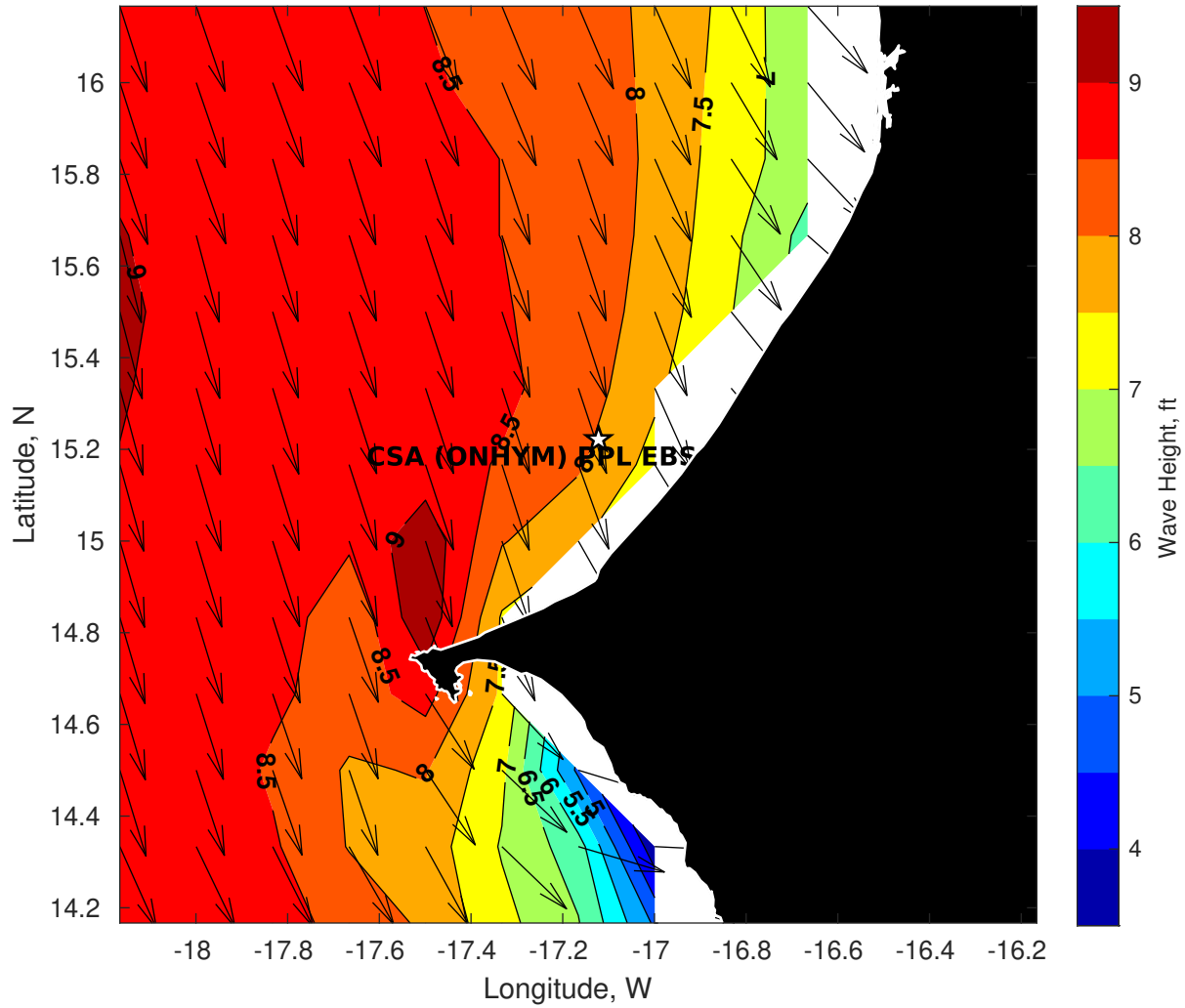
**Wind & Wave Forecast for CSA (ONHYM) PPL EBS - Senegal from 19-Mar-2025 13:00:00 to 04-Apr-2025 13:00:00**



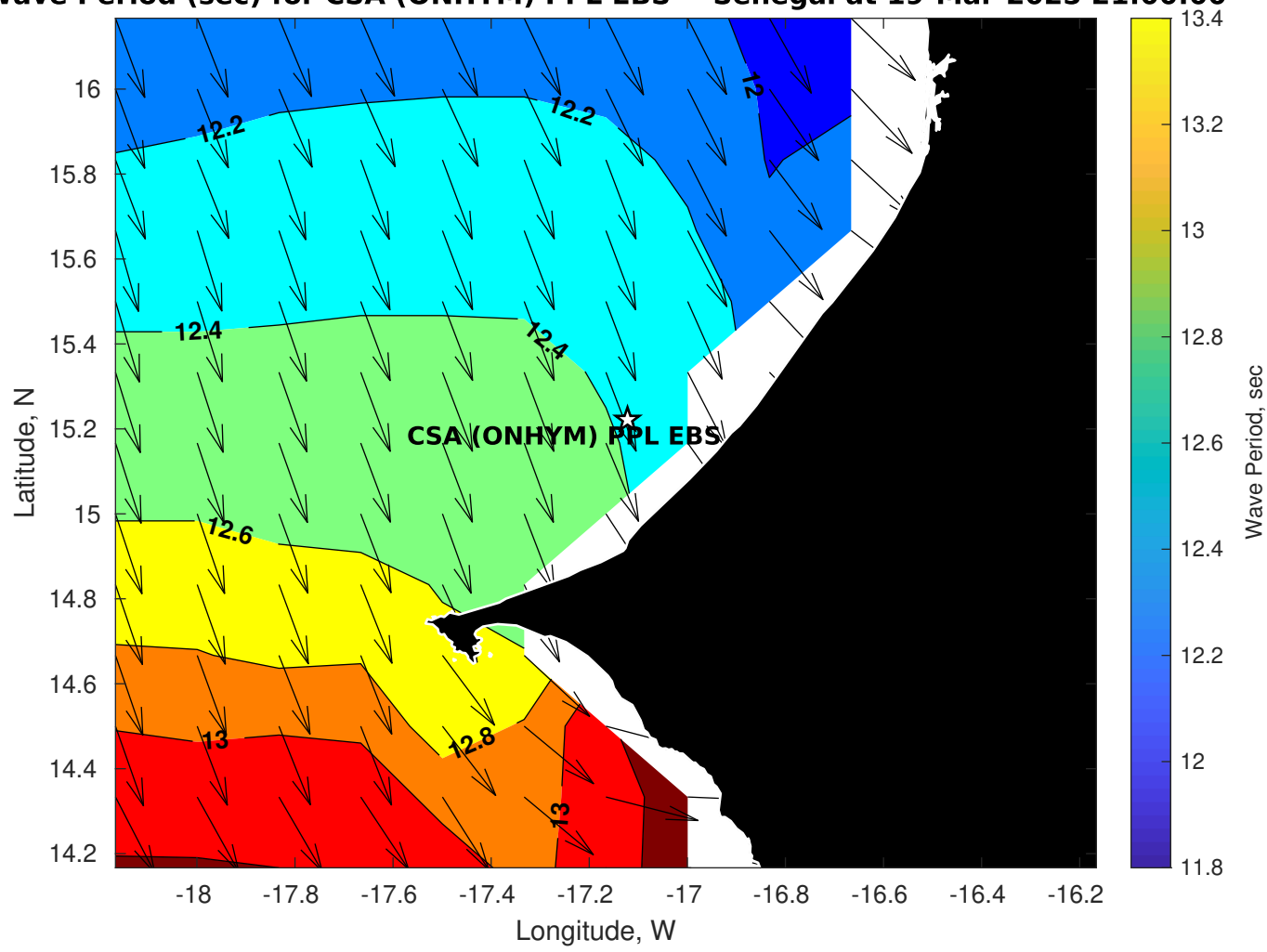
**Met Forecast for CSA (ONHYM) PPL EBS - Senegal from 19-Mar-2025 12:00:00 to 26-Mar-2025 12:00:00**



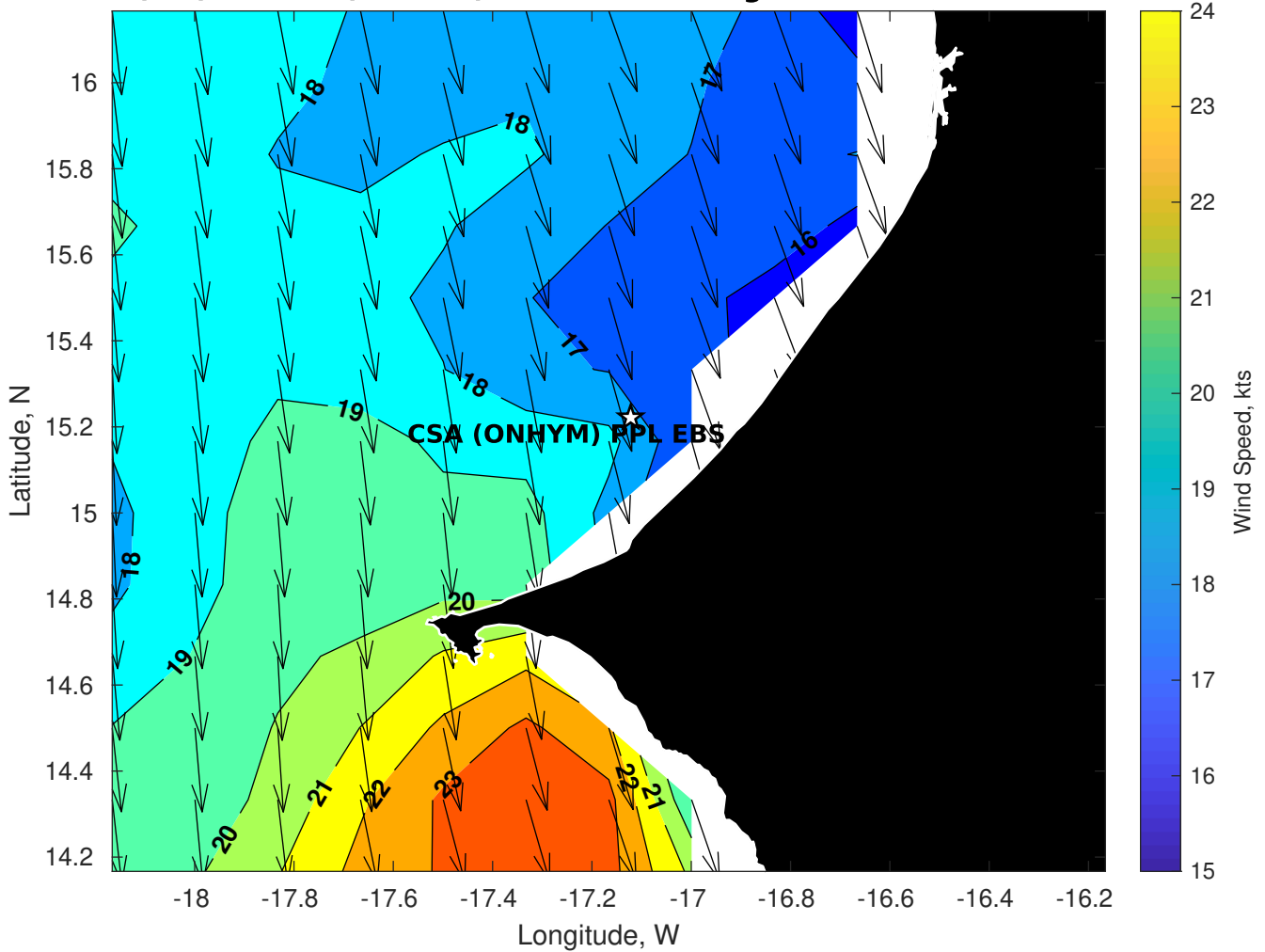
**Wave Height (ft) for CSA (ONHYM) PPL EBS - Senegal at 19-Mar-2025 21:00:00**



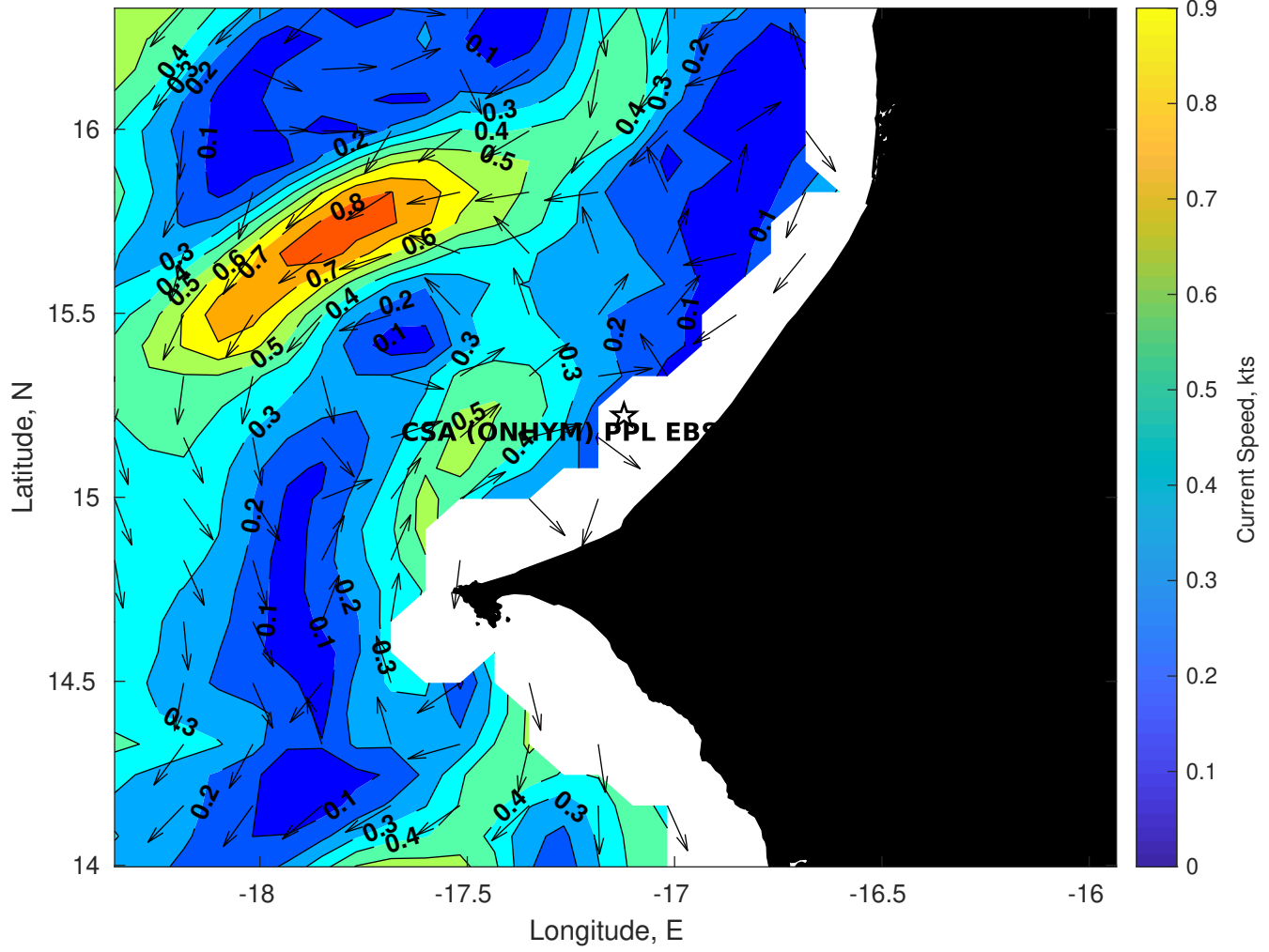
**Wave Period (sec) for CSA (ONHYM) PPL EBS - Senegal at 19-Mar-2025 21:00:00**



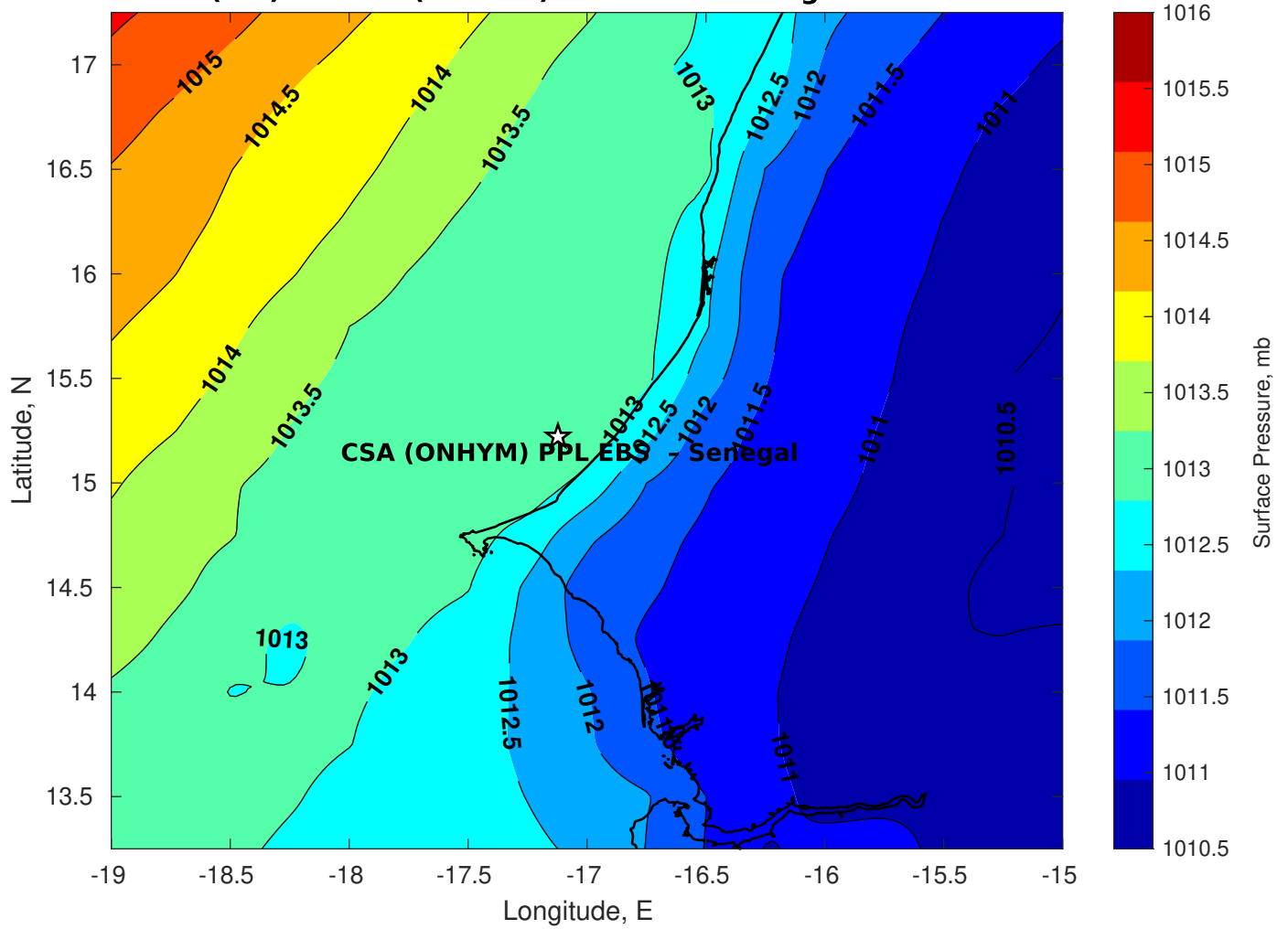
**Winds (kts) for CSA (ONHYM) PPL EBS - Senegal at 19-Mar-2025 21:00:00**



**Surface Currents for CSA (ONHYM) PPL EBS - Senegal at 19-Mar-2025 00:00:00**

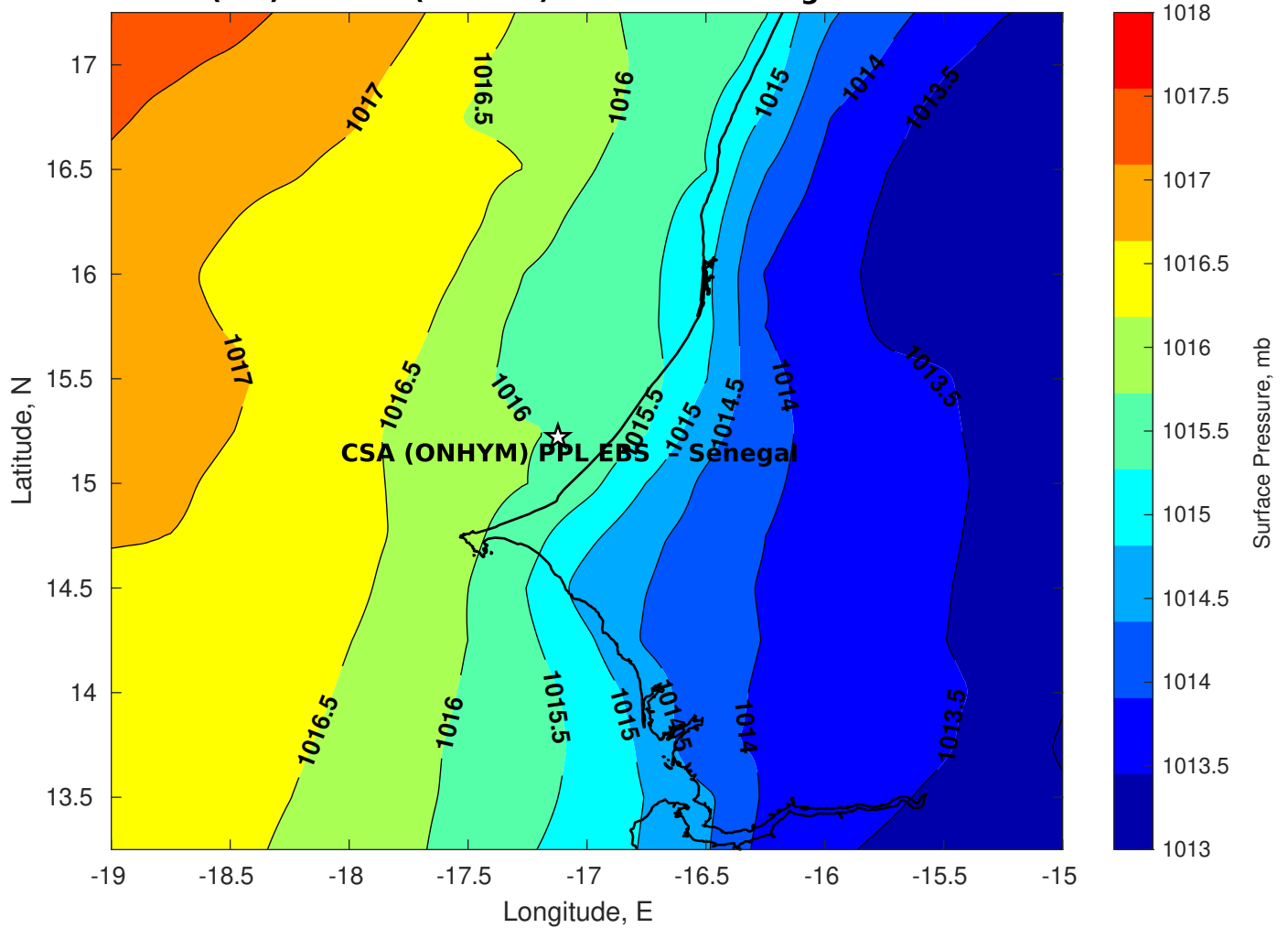


Surface Pressure (mb) for CSA (ONHYM) PPL EBS - Senegal at 19-Mar-2025 12:00:00

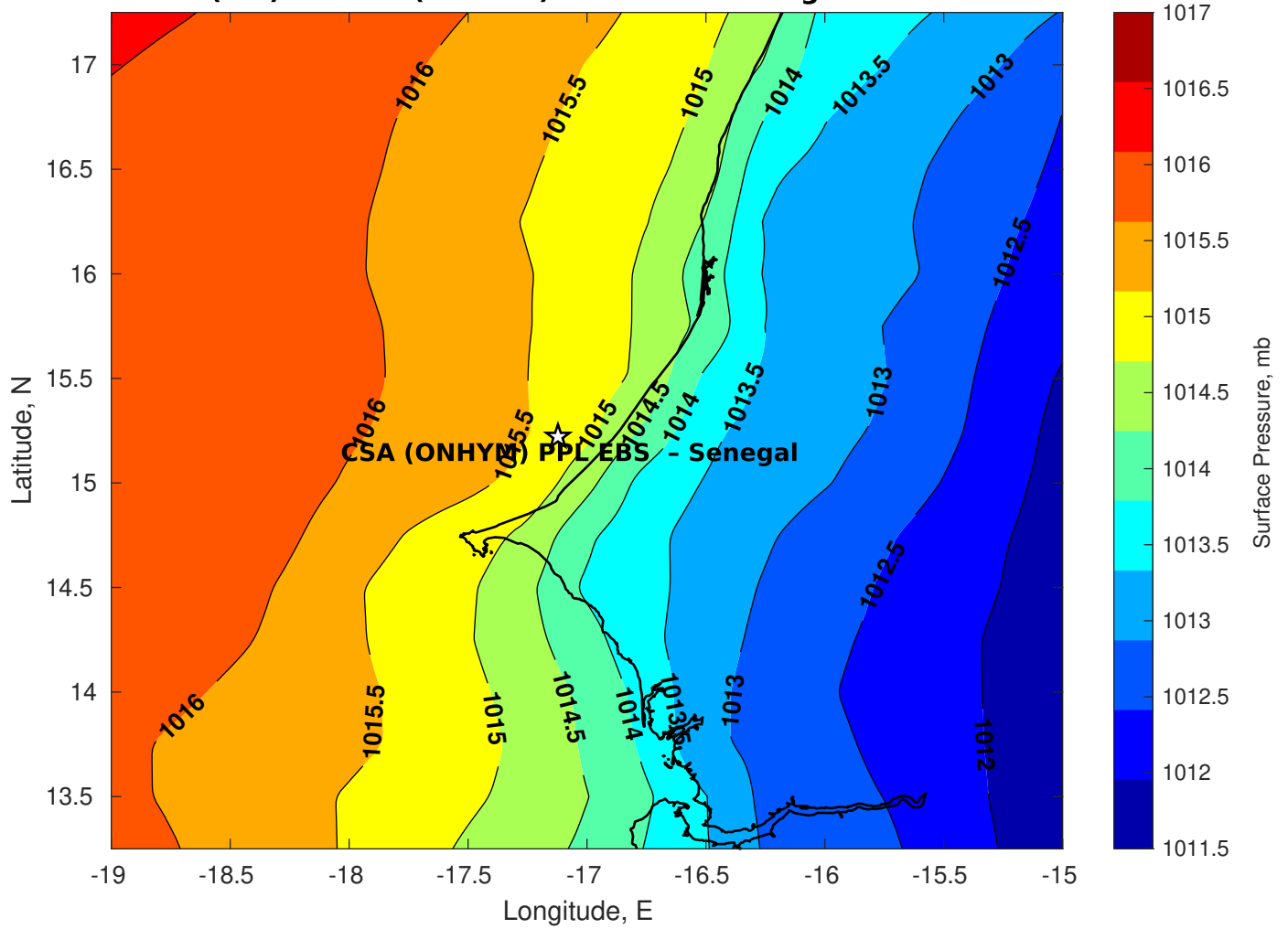




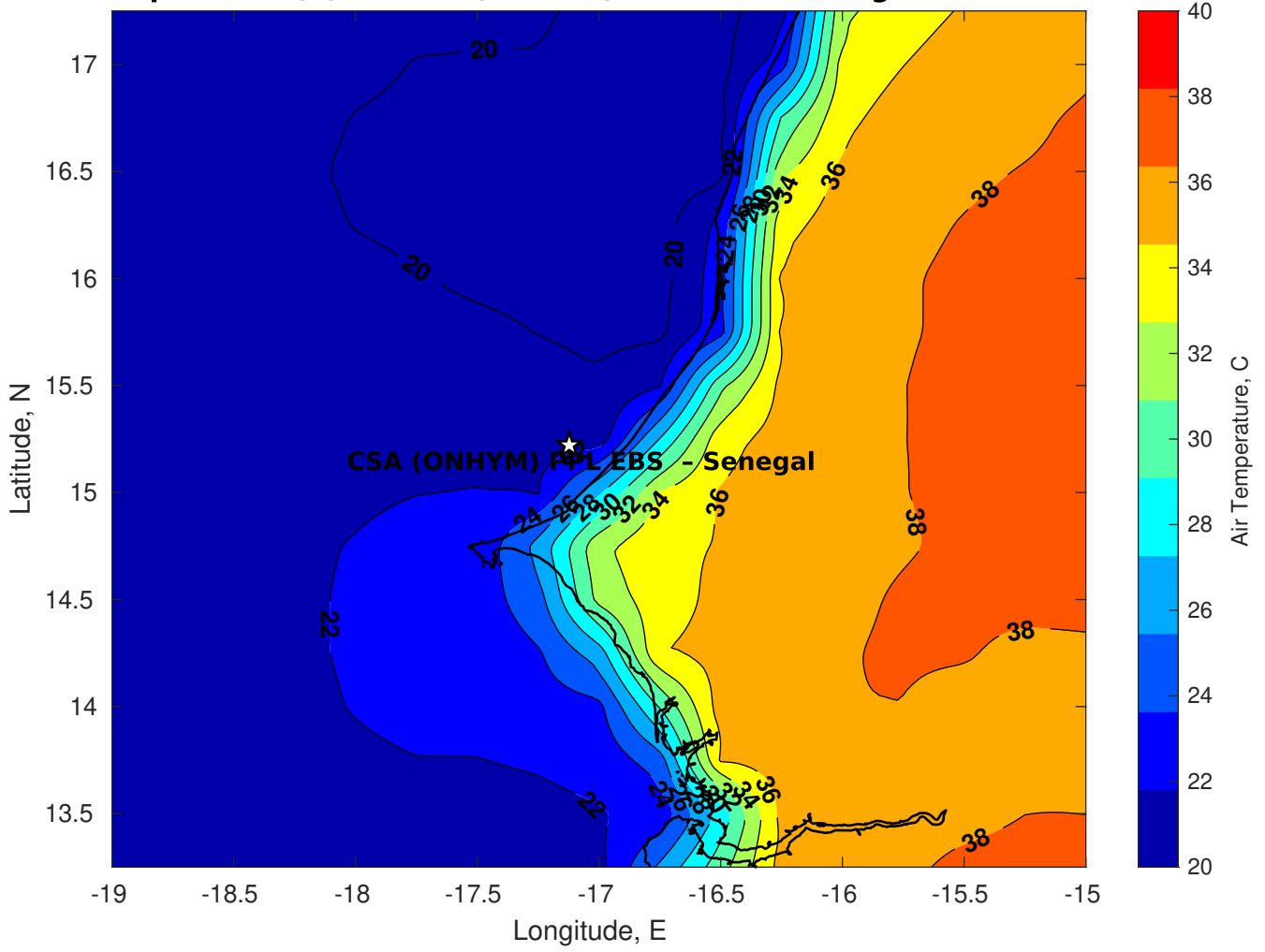
**Surface Pressure (mb) for CSA (ONHYM) PPL EBS - Senegal at 20-Mar-2025 12:00:00**



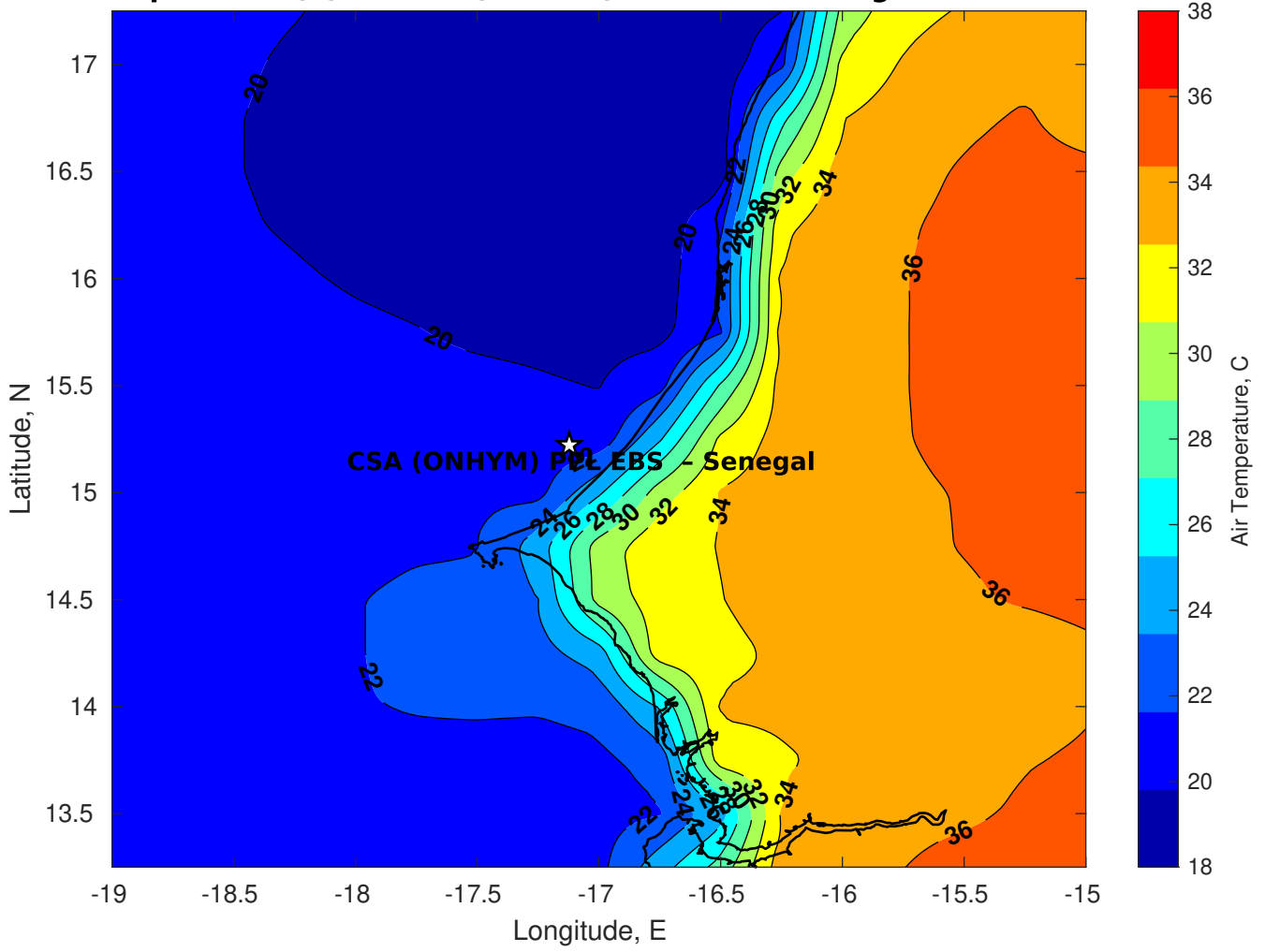
Surface Pressure (mb) for CSA (ONHYM) PPL EBS - Senegal at 21-Mar-2025 12:00:00



**Air Temperature (C) for CSA (ONHYM) PPL EBS - Senegal at 19-Mar-2025**



**Air Temperature (C) for CSA (ONHYM) PPL EBS - Senegal at 19-Mar-2025**



**Air Temperature (C) for CSA (ONHYM) PPL EBS - Senegal at 19-Mar-2025**

