
Marine Weather Forecast for Nautilus
Forecast valid as of 19-Mar-2025 2000 GMT

All times are local.

Tonight

Winds: NE, 5-10 kts.
Waves: NW, 4-5 feet, 12-13 sec.
Currents: SE, 0.5-1 kts.

Thursday

Winds: NE, 10-15 kts.
Waves: N, 4-5 feet, 12-13 sec.
Currents: SE, 0.5-1 kts.

Thursday Night

Winds: NE, 5-10 kts.
Waves: NW, 4-5 feet, 11-12 sec.
Currents: SE, 0.5-1 kts.

Friday

Winds: NE, 10-15 kts.
Waves: NW, 4-5 feet, 12-13 sec.
Currents: SE, 0.5-1 kts.

Friday Night

Winds: NE, 10-15 kts.
Waves: N, 4-5 feet, 12-13 sec.
Currents: S, 0.5-1 kts.

Saturday

Winds: NE, 10-15 kts.
Waves: NW, 4-5 feet, 11-12 sec.
Currents: S, 0.5-1 kts.

Saturday Night

Winds: NE, 10-15 kts.
Waves: NW, 4-5 feet, 11-12 sec.
Currents: S, 0.5-1 kts.

Sunday

Winds: NE, 10-15 kts.
Waves: N, 5-6 feet, 10-11 sec.
Currents: SE, 0.5-1 kts.

Sunday Night

Winds: NE, 15-20 kts.
Waves: NW, 5-6 feet, 10-11 sec.
Currents: S, less than 0.5 knot.

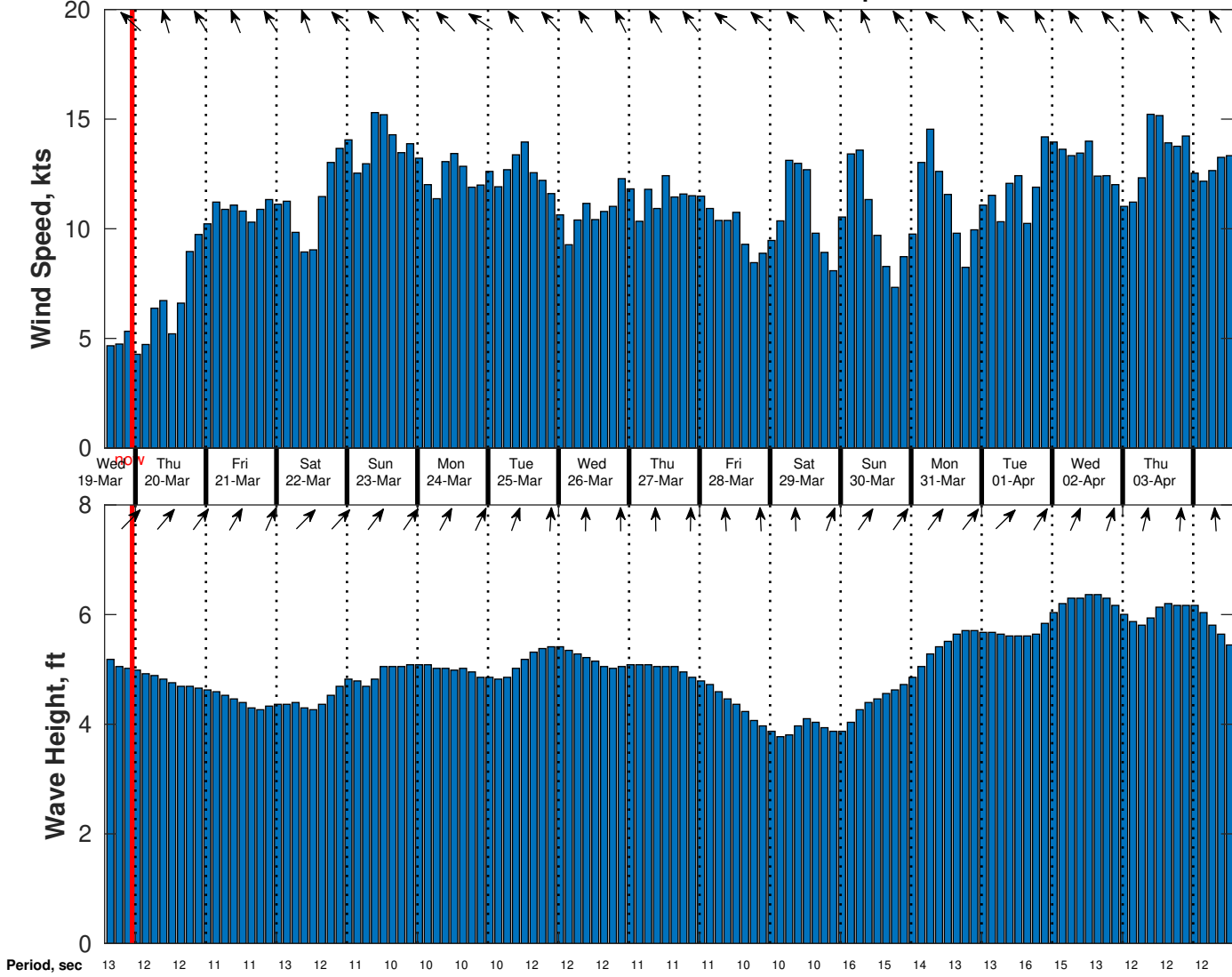
Monday

Winds: NE, 10-15 kts.
Waves: N, 4-5 feet, 9-10 sec.
Currents: S, 0.5-1 kts.

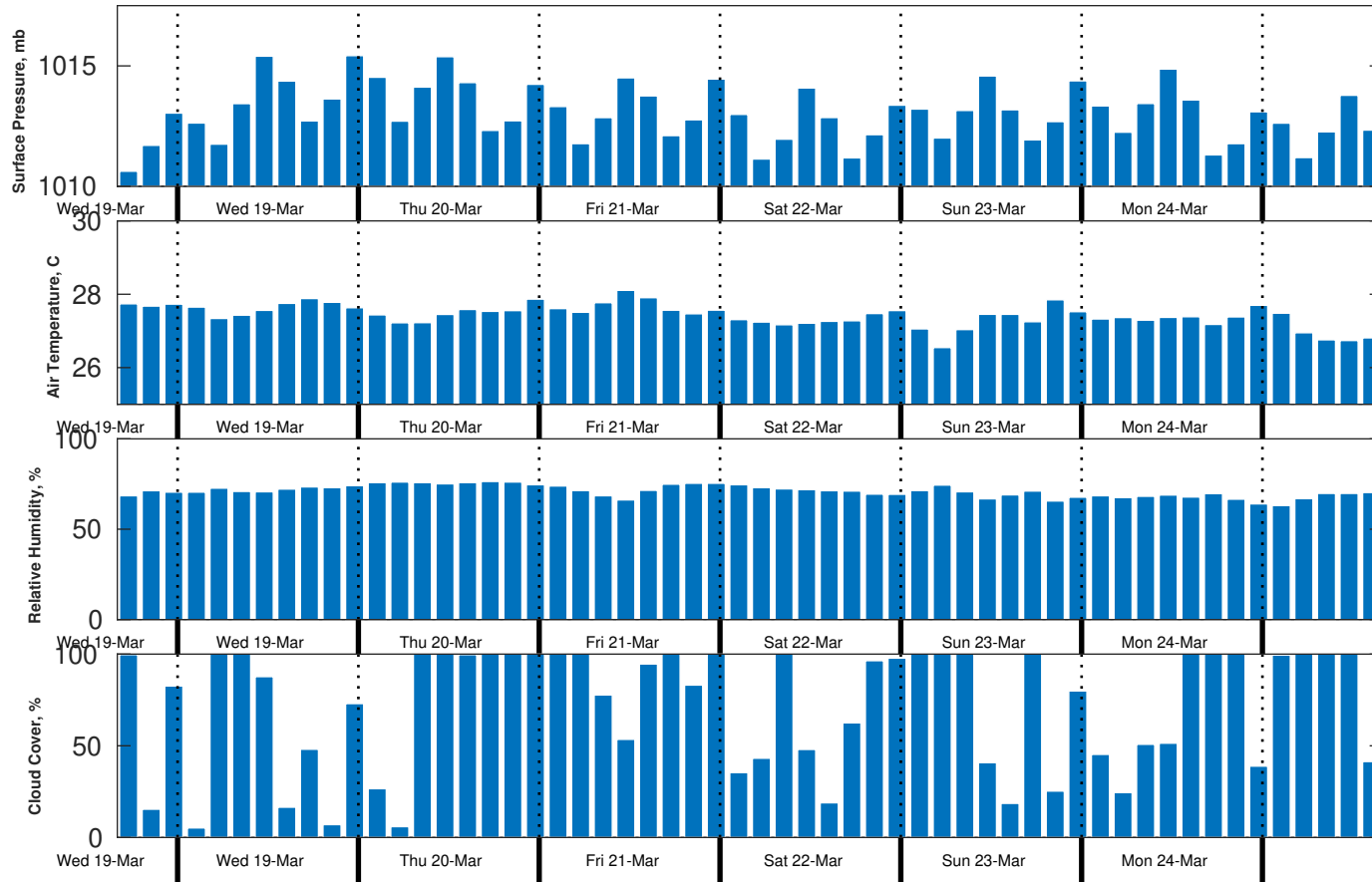
Monday Night

Winds: NE, 10-15 kts.
Waves: N, 5-6 feet, 10-11 sec.

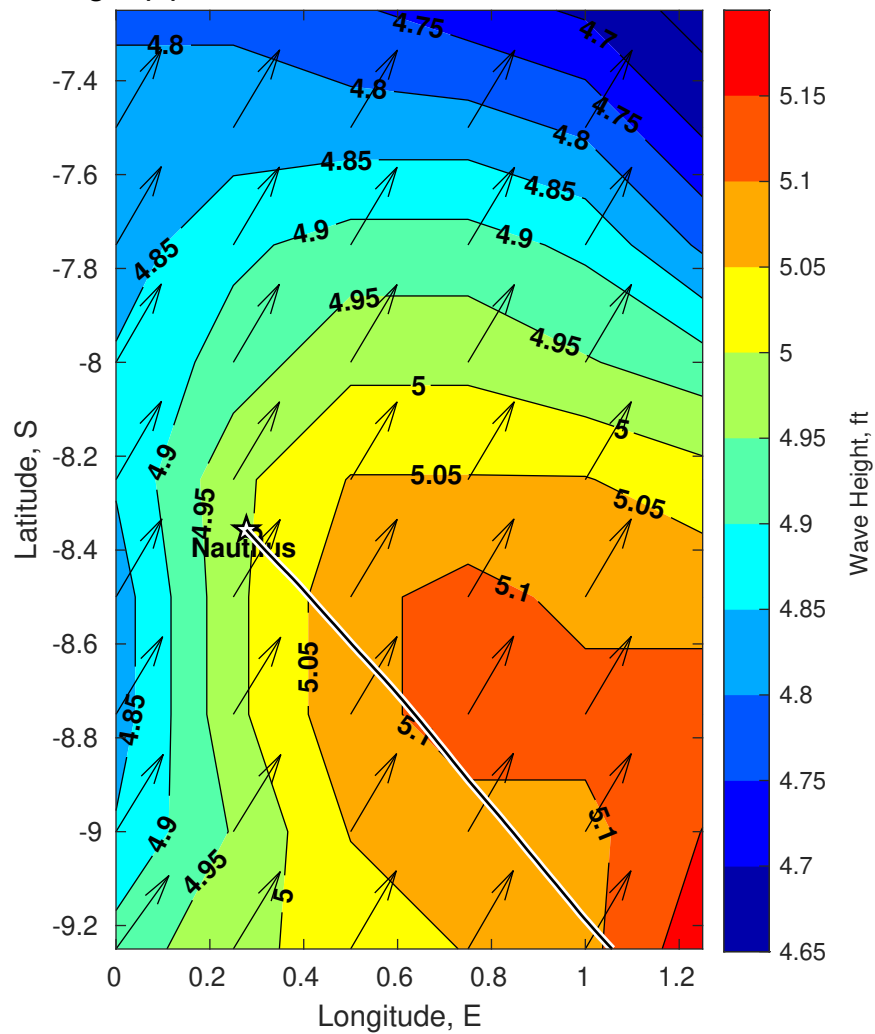
Wind & Wave Forecast for Nautilus from 19-Mar-2025 14:00:00 to 04-Apr-2025 14:00:00



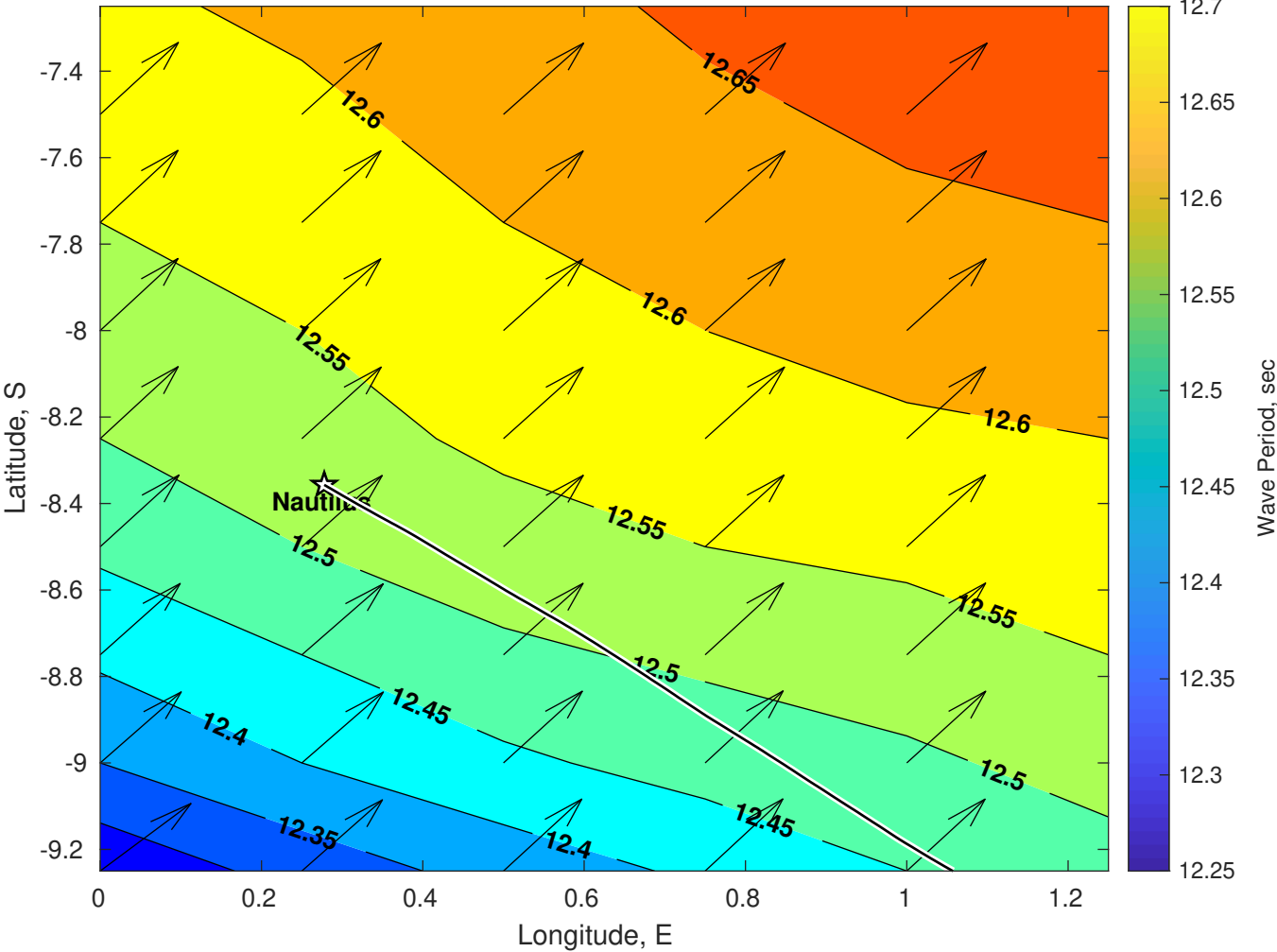
Met Forecast for Nautilus from 19-Mar-2025 12:00:00 to 26-Mar-2025 12:00:00



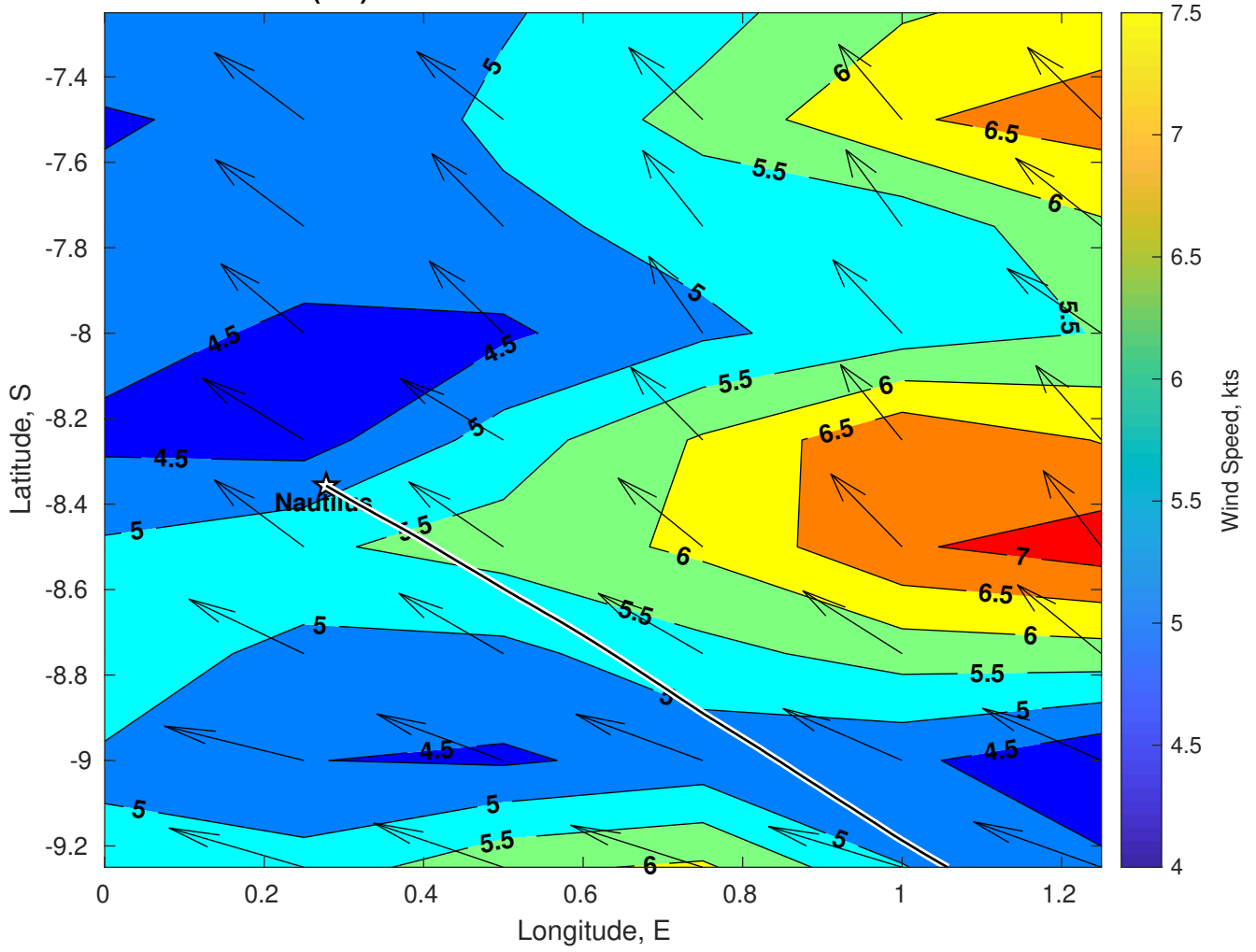
Wave Height (ft) for Nautilus at 19-Mar-2025 21:00:00



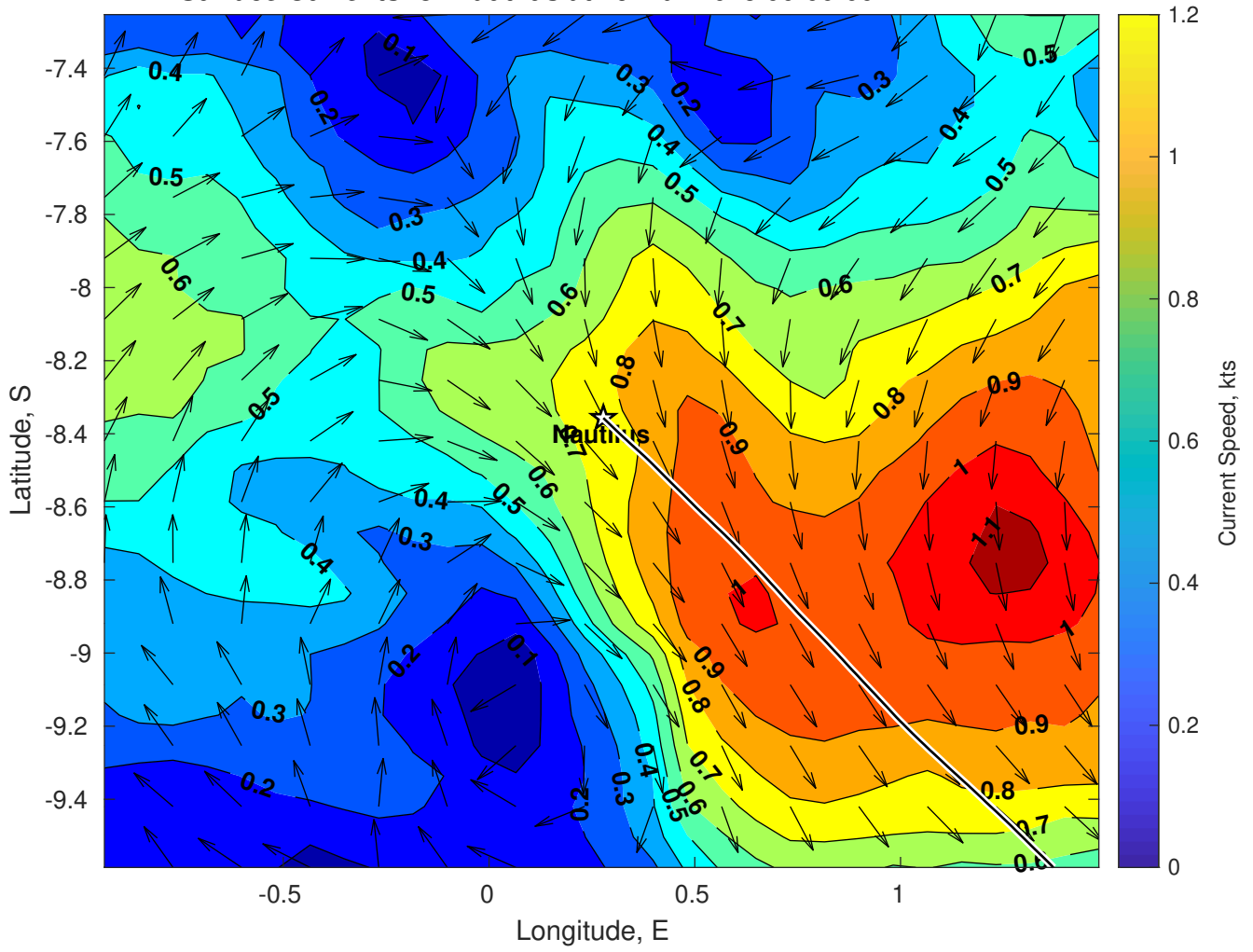
Wave Period (sec) for Nautilus at 19-Mar-2025 21:00:00



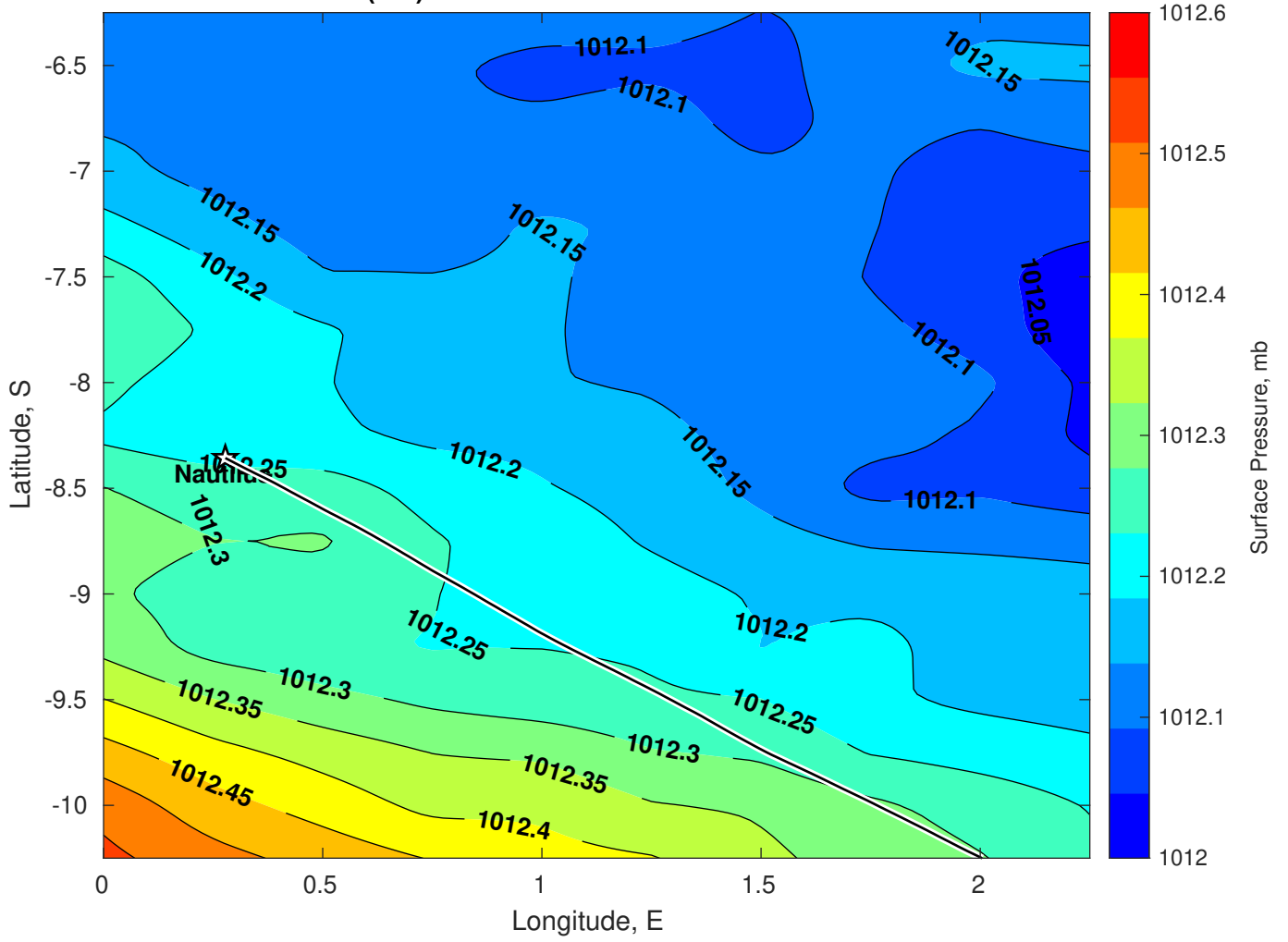
Winds (kts) for Nautilus at 19-Mar-2025 21:00:00



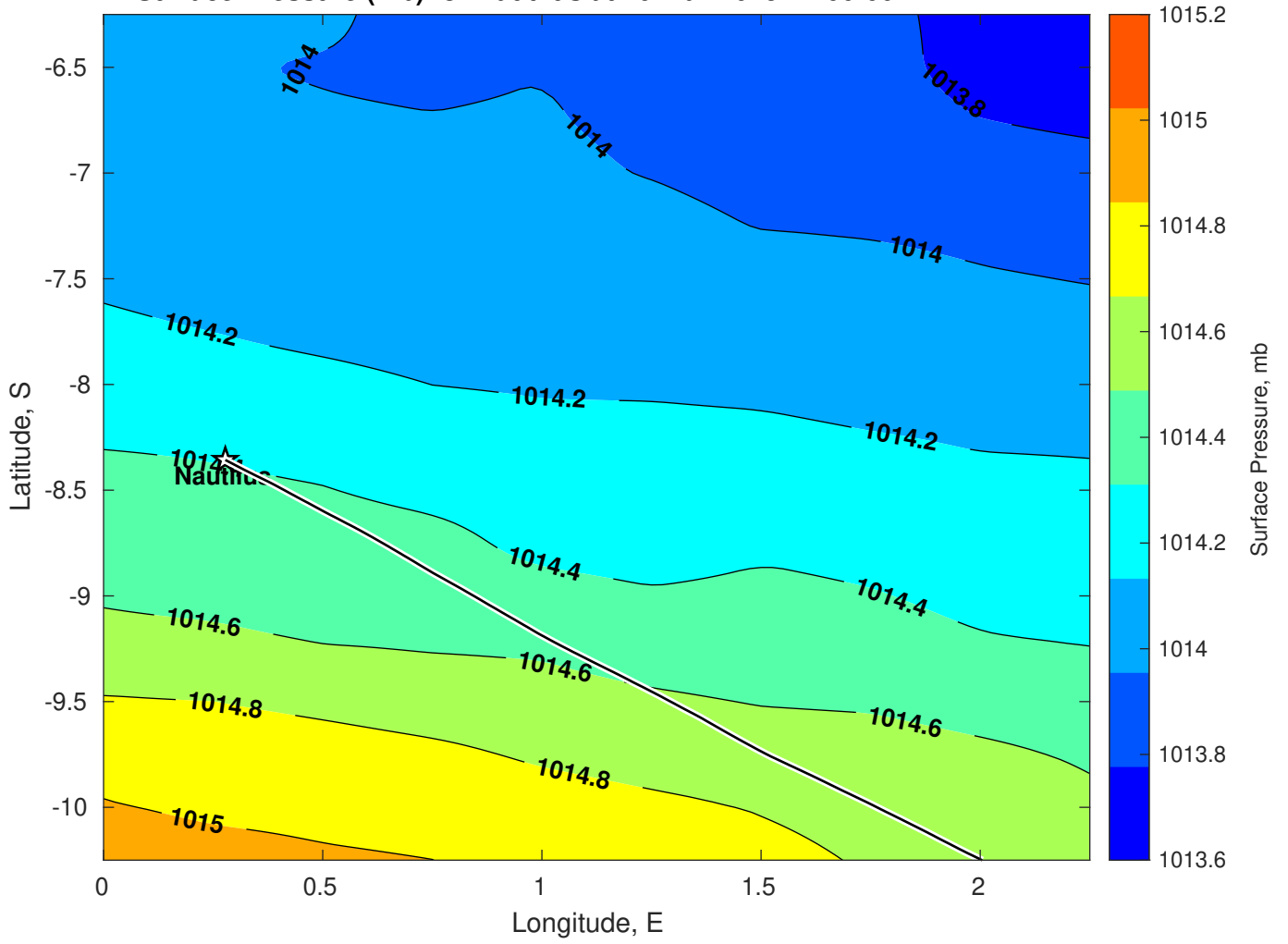
Surface Currents for Nautilus at 19-Mar-2025 00:00:00



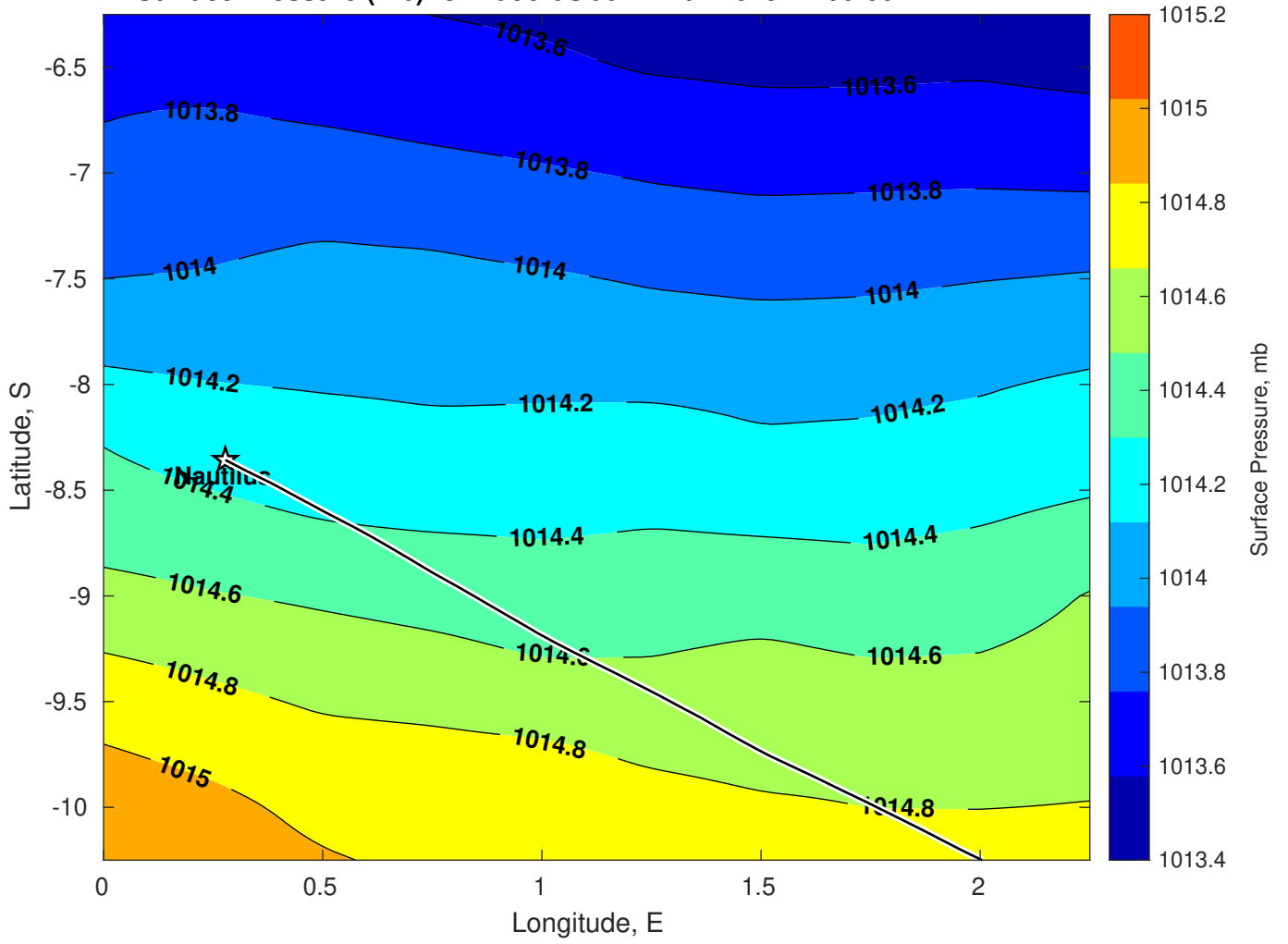
Surface Pressure (mb) for Nautilus at 19-Mar-2025 12:00:00



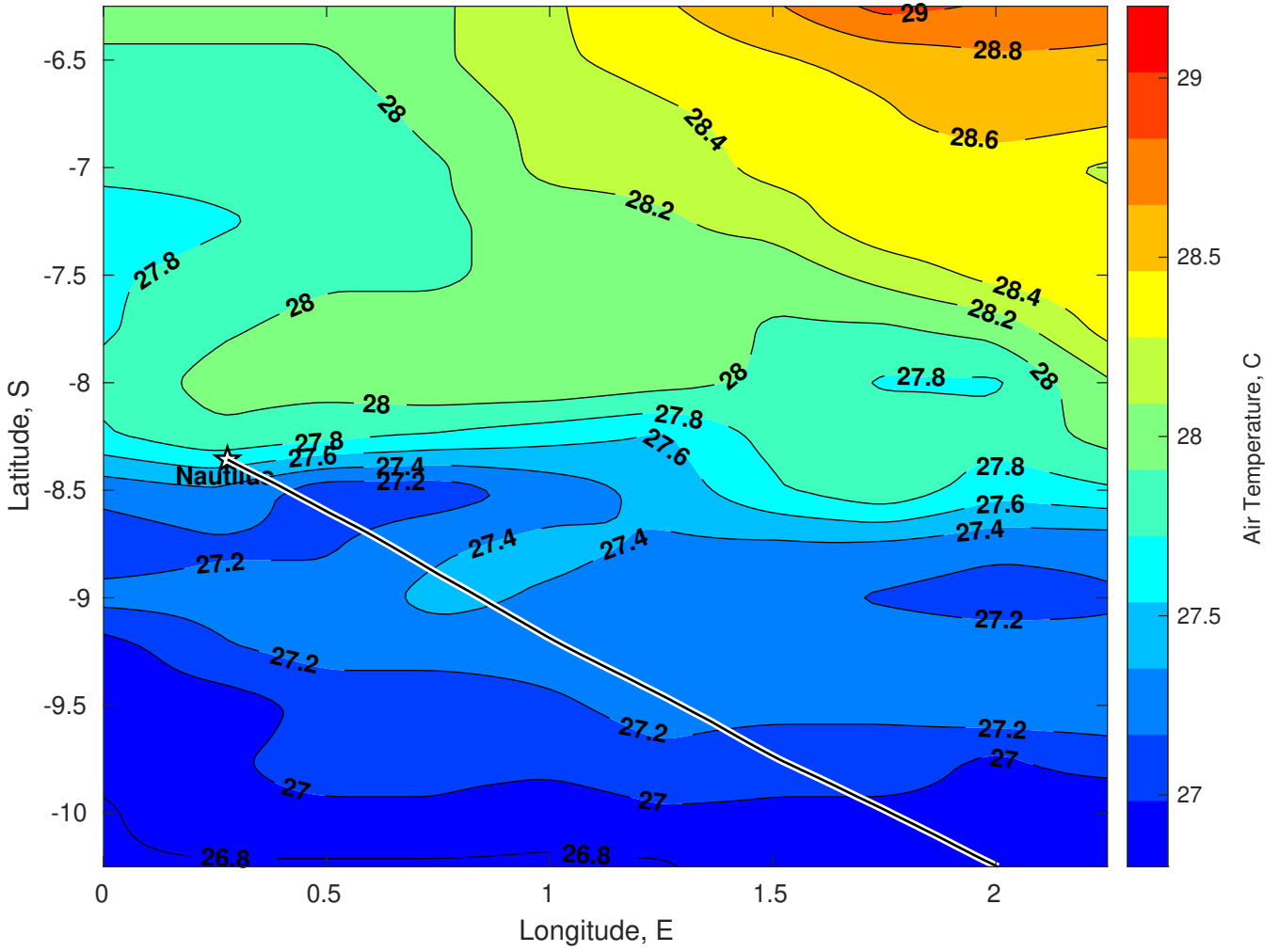
Surface Pressure (mb) for Nautilus at 20-Mar-2025 12:00:00



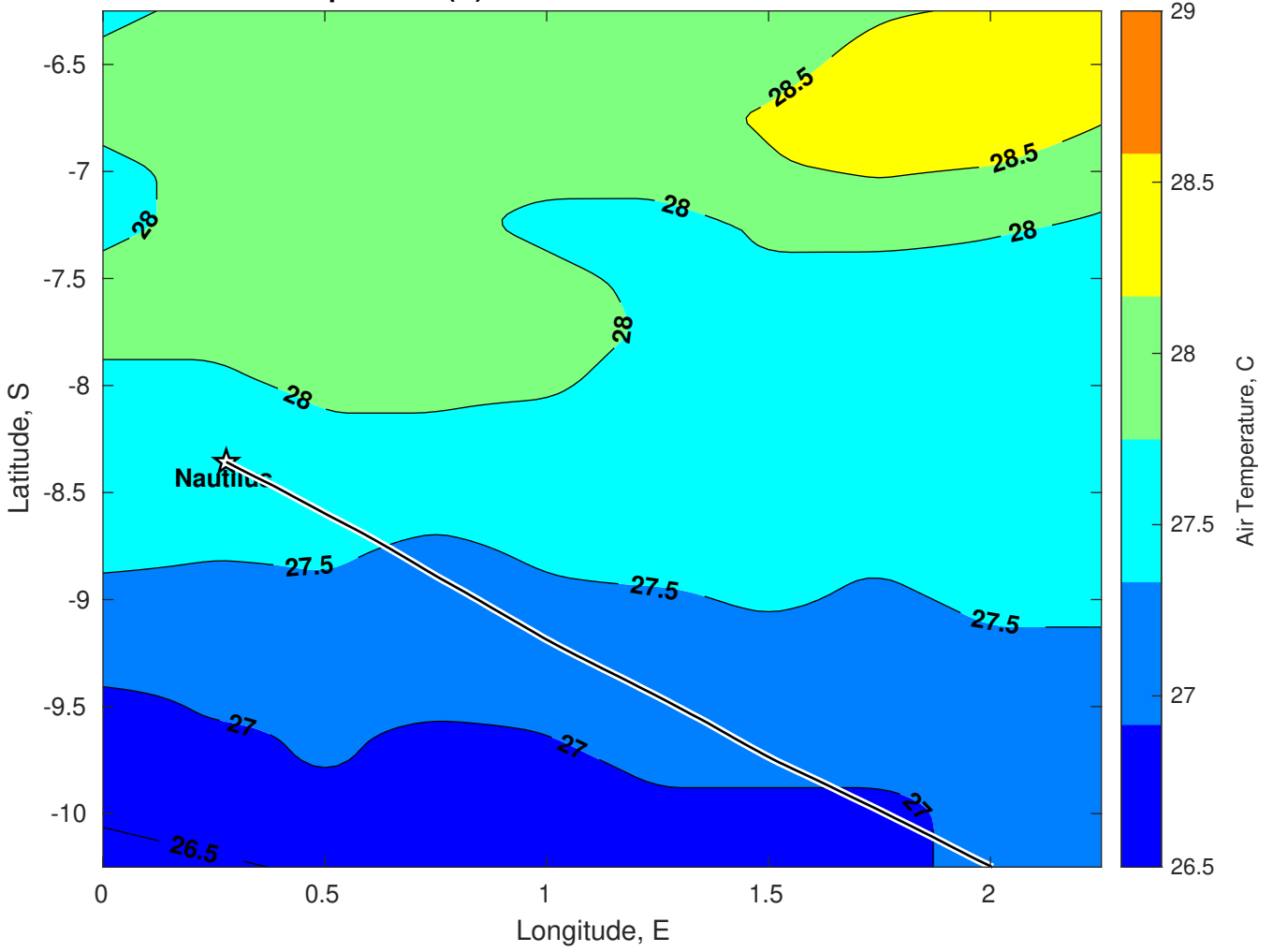
Surface Pressure (mb) for Nautilus at 21-Mar-2025 12:00:00



Air Temperature (C) for Nautilus at 19-Mar-2025



Air Temperature (C) for Nautilus at 19-Mar-2025



Air Temperature (C) for Nautilus at 19-Mar-2025

