

\*\*\*\*\*

Marine Weather Forecast for Shell Noches GC19 PPL Geotechnical  
Forecast valid as of 19-Mar-2025 2000 GMT

\*\*\*\*\*

All times are local.

Today

Winds: NW, 5-10 kts.  
Waves: N, 4-5 feet, 6-7 sec.  
Currents: E, less than 0.5 knot.

Tonight

Winds: NW, 25-30 kts.  
Waves: N, 6-7 feet, 6-7 sec.  
Currents: SE, less than 0.5 knot.

Thursday

Winds: NW, 25-30 kts.  
Waves: NW, 6-7 feet, 6-7 sec.  
Currents: S, less than 0.5 knot.

Thursday Night

Winds: NE, 15-20 kts.  
Waves: W, 4-5 feet, 5-6 sec.  
Currents: SW, less than 0.5 knot.

Friday

Winds: E, 10-15 kts.  
Waves: E, 2-3 feet, 5-6 sec.  
Currents: W, less than 0.5 knot.

Friday Night

Winds: N, 10-15 kts.  
Waves: NE, 1-2 feet, 3-4 sec.  
Currents: N, less than 0.5 knot.

Saturday

Winds: NE, 10-15 kts.  
Waves: NE, 1-2 feet, 3-4 sec.  
Currents: SE, less than 0.5 knot.

Saturday Night

Winds: NE, 15-20 kts.  
Waves: NE, 3-4 feet, 4-5 sec.  
Currents: N, less than 0.5 knot.

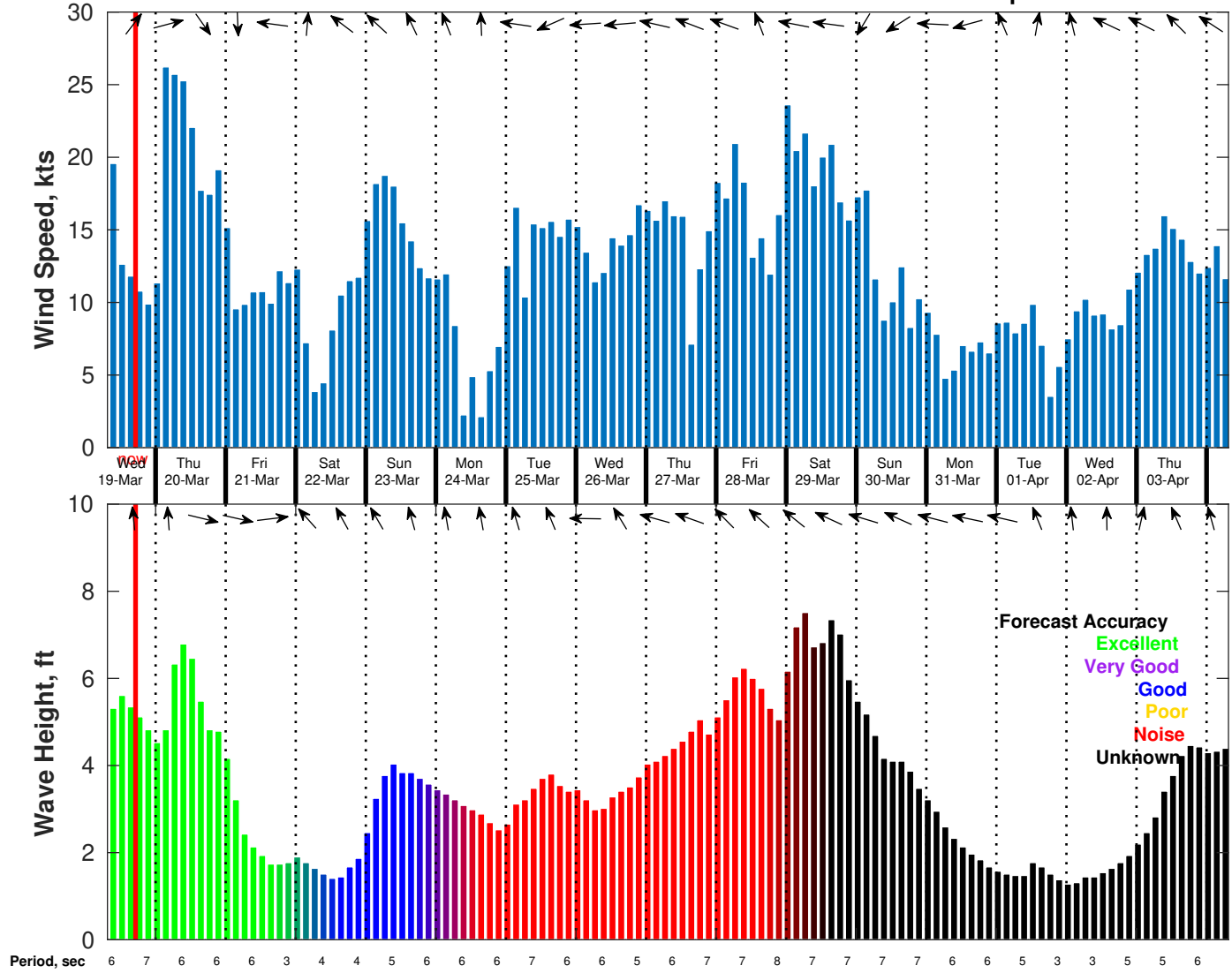
Sunday

Winds: NE, 15-20 kts.  
Waves: N, 4-5 feet, 5-6 sec.  
Currents: NE, less than 0.5 knot.

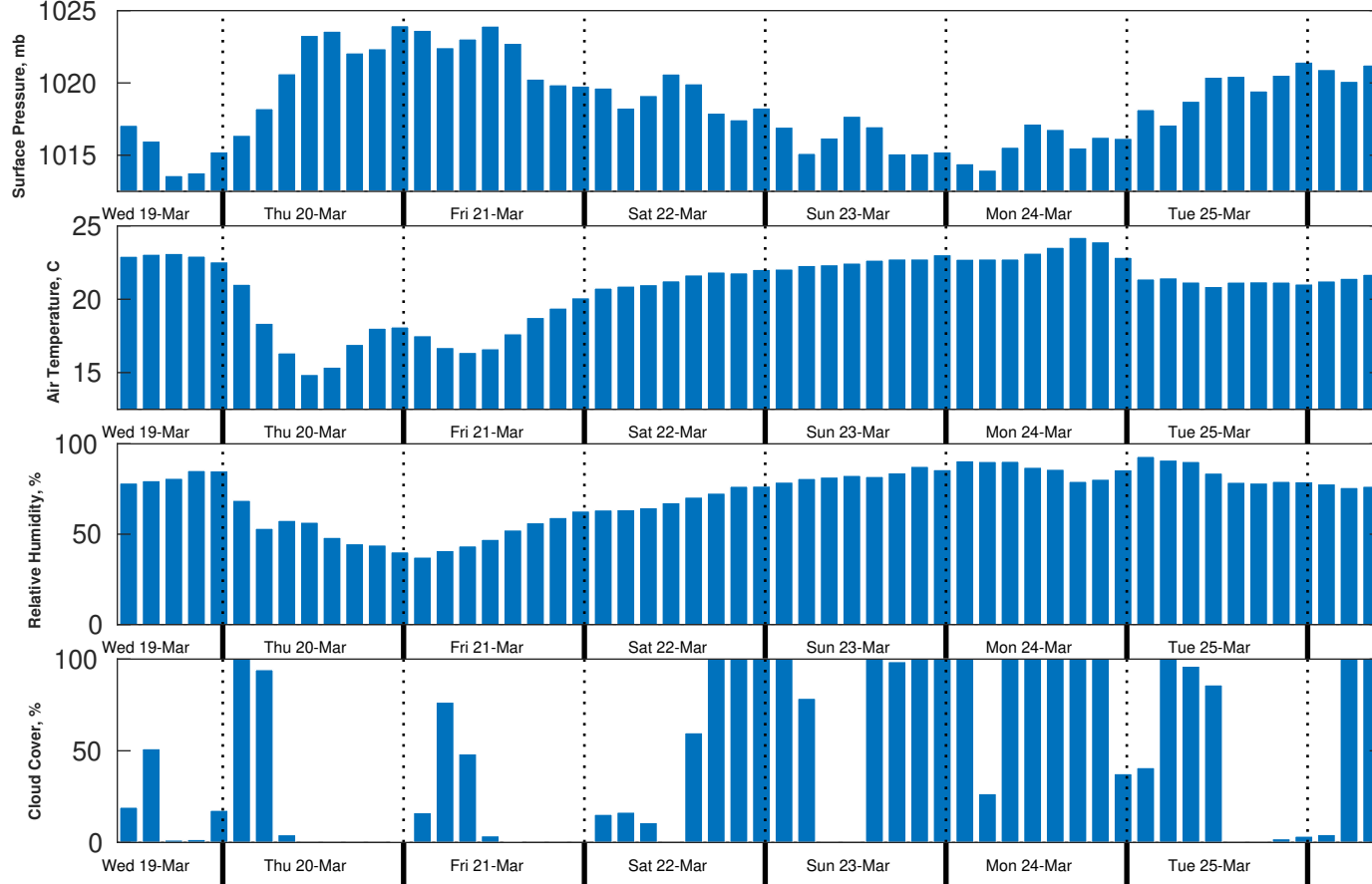
Sunday Night

Winds: N, 10-15 kts.  
Waves: N, 3-4 feet, 5-6 sec.  
Currents: NW, less than 0.5 knot.

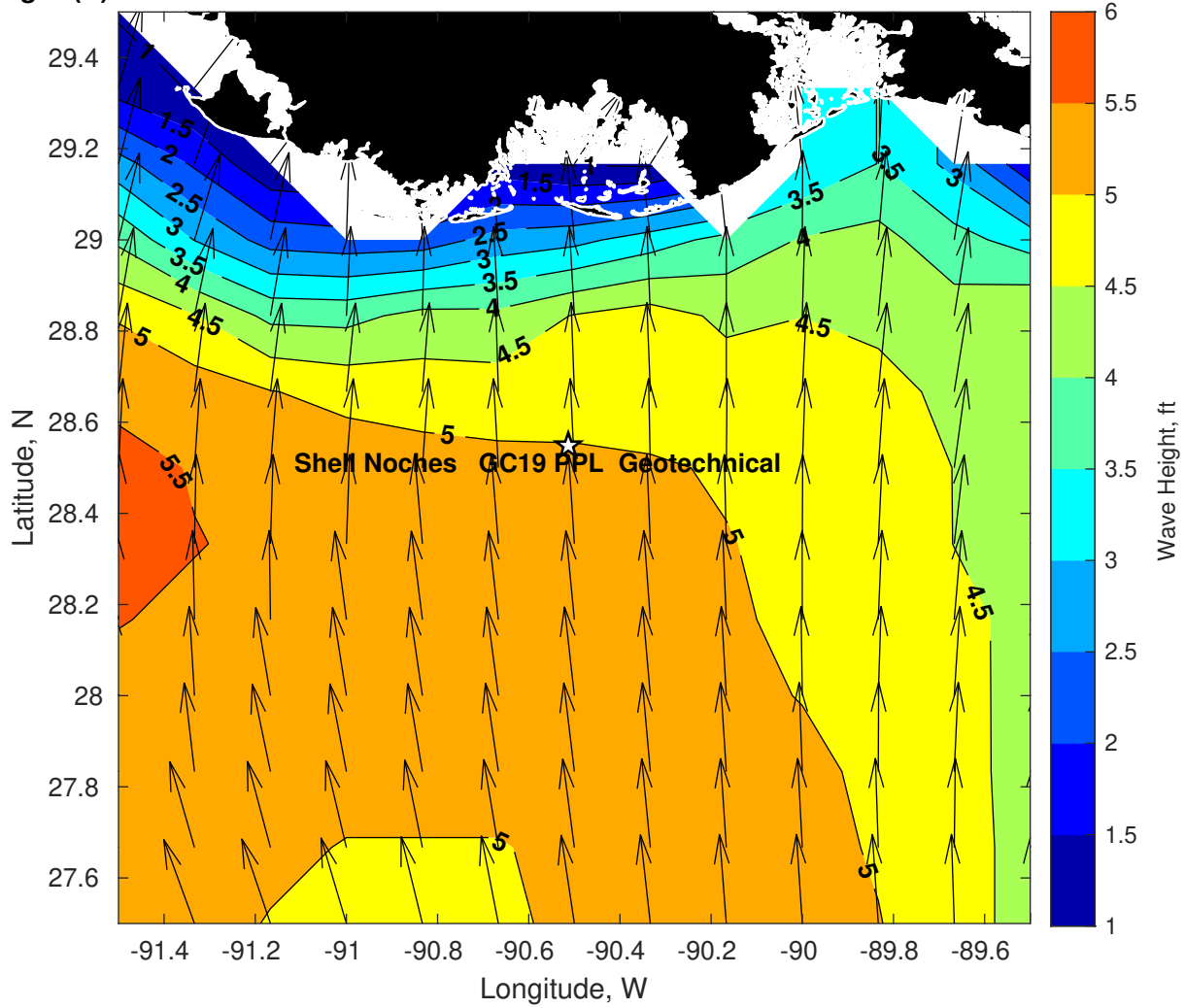
**Wind & Wave Forecast for Shell Noches GC19 PPL Geotechnical from 19-Mar-2025 08:00:00 to 04-Apr-2025 08:00:00**



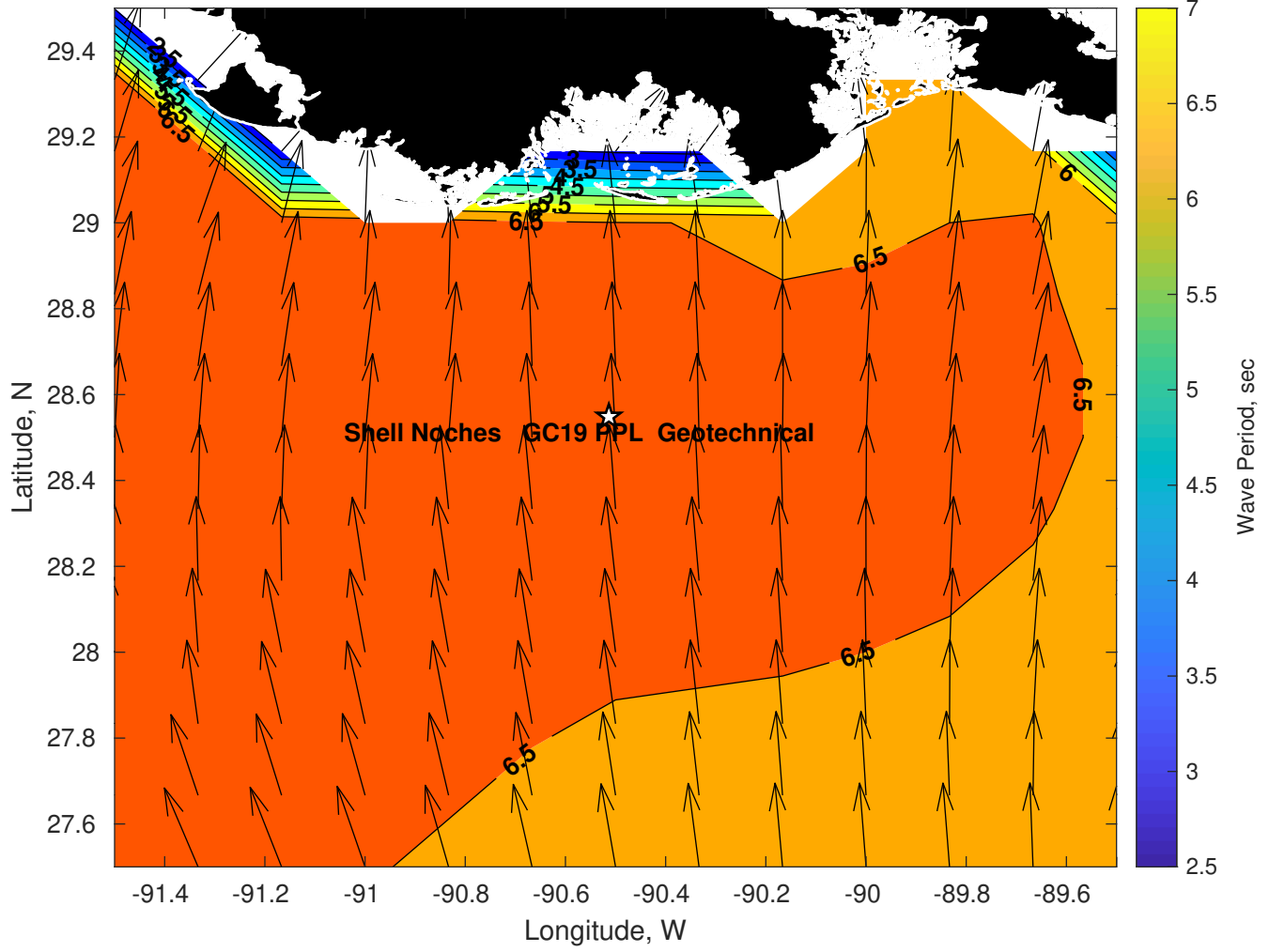
**Met Forecast for Shell Noches GC19 PPL Geotechnical from 19-Mar-2025 12:00:00 to 26-Mar-2025 12:00:00**



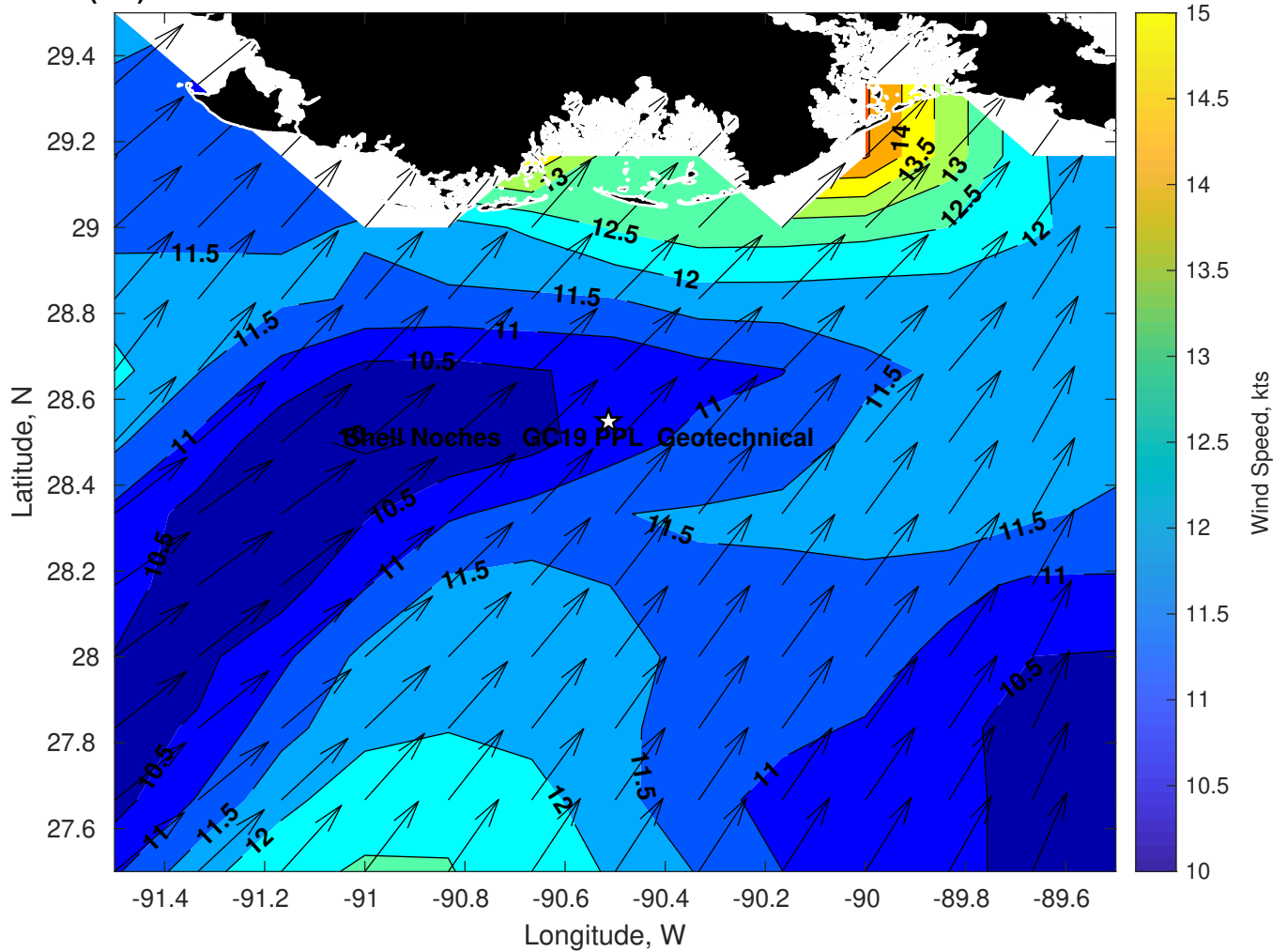
Wave Height (ft) for Shell Noches GC19 PPL Geotechnical at 19-Mar-2025 21:00:00



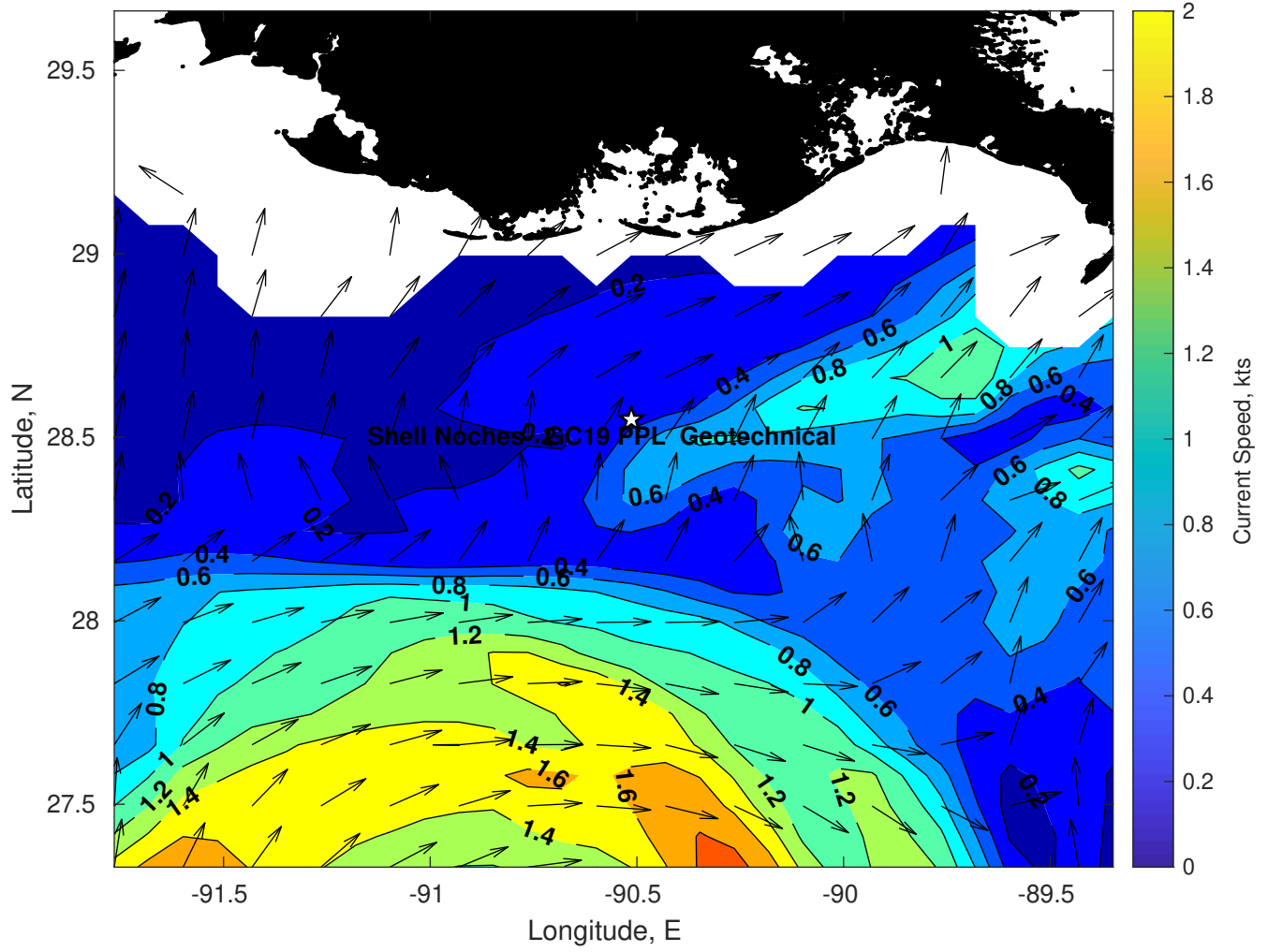
Wave Period (sec) for Shell Noches GC19 PPL Geotechnical at 19-Mar-2025 21:00:00



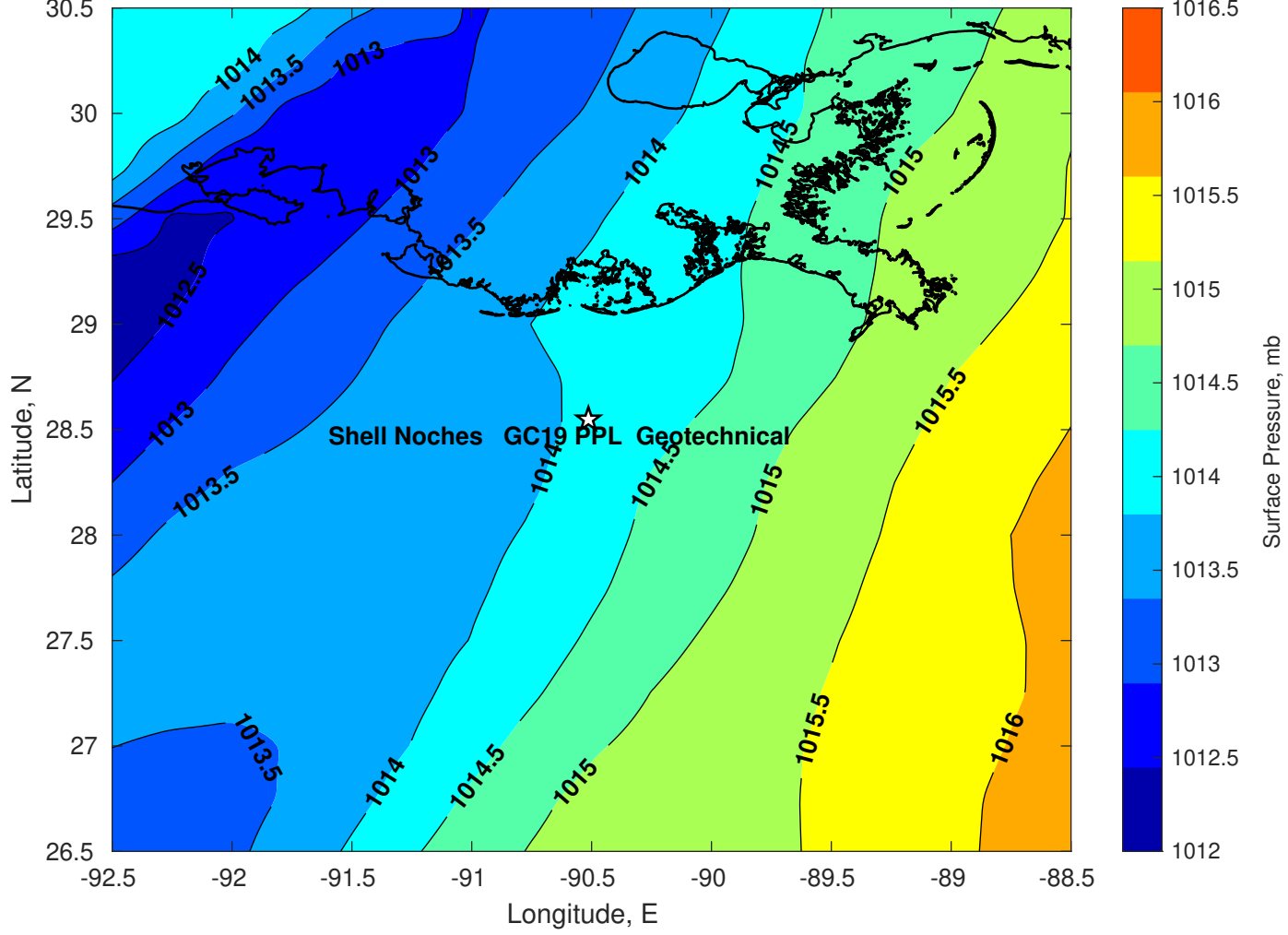
Winds (kts) for Shell Noches GC19 PPL Geotechnical at 19-Mar-2025 21:00:00



Surface Currents for Shell Noches GC19 PPL Geotechnical at 19-Mar-2025 00:00:00

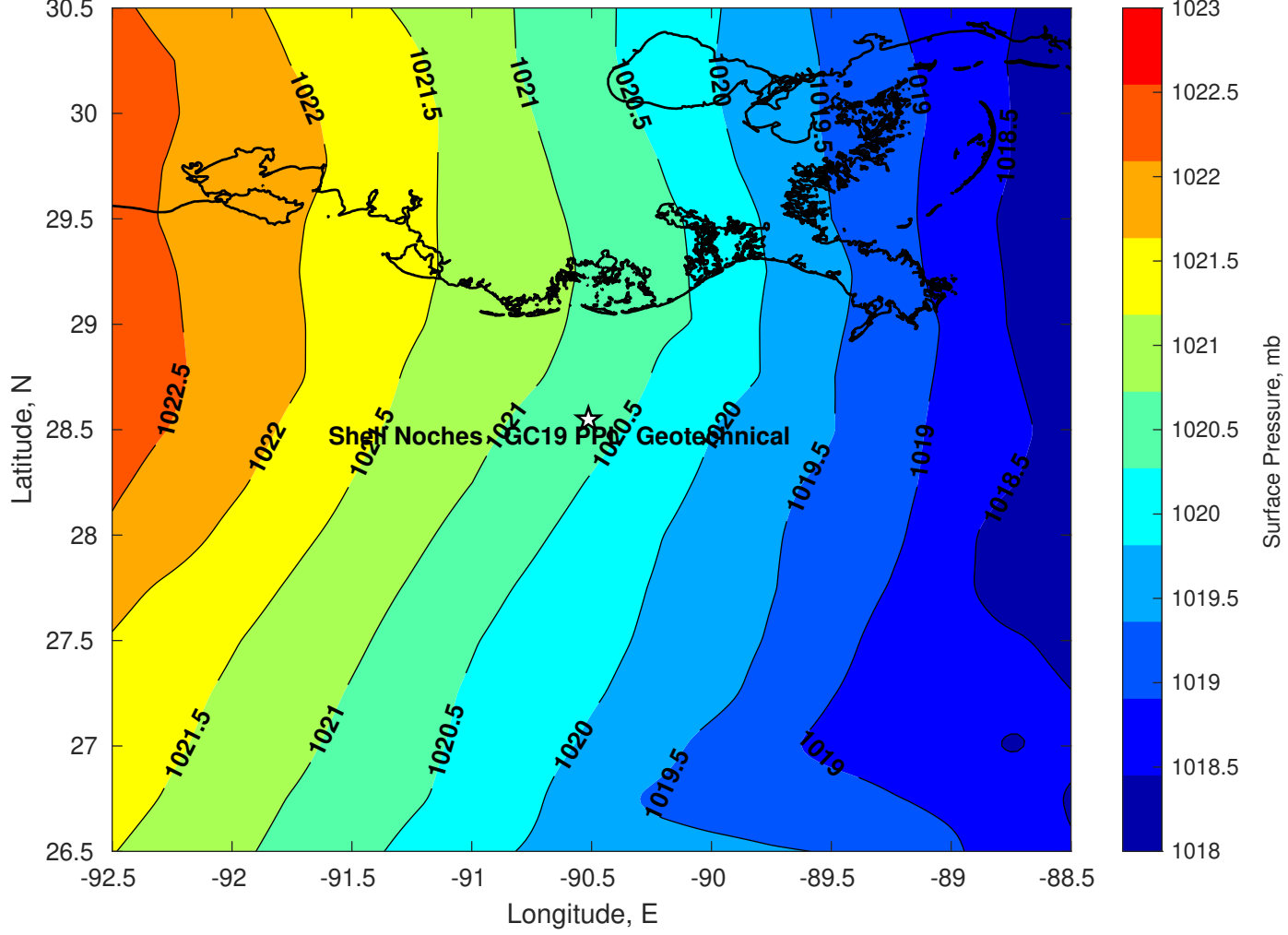


Surface Pressure (mb) for Shell Noches GC19 PPL Geotechnical at 19-Mar-2025 12:00:00

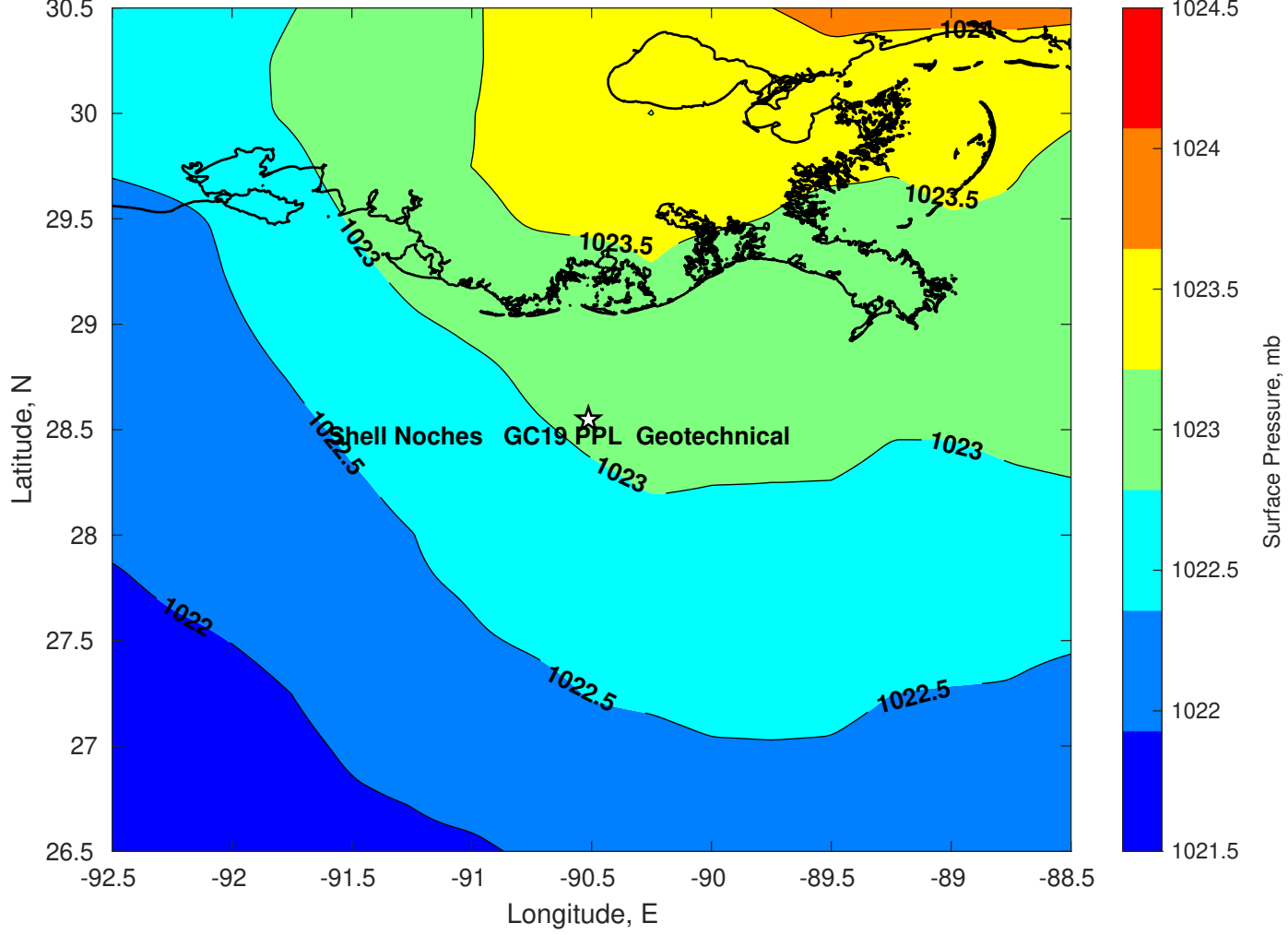




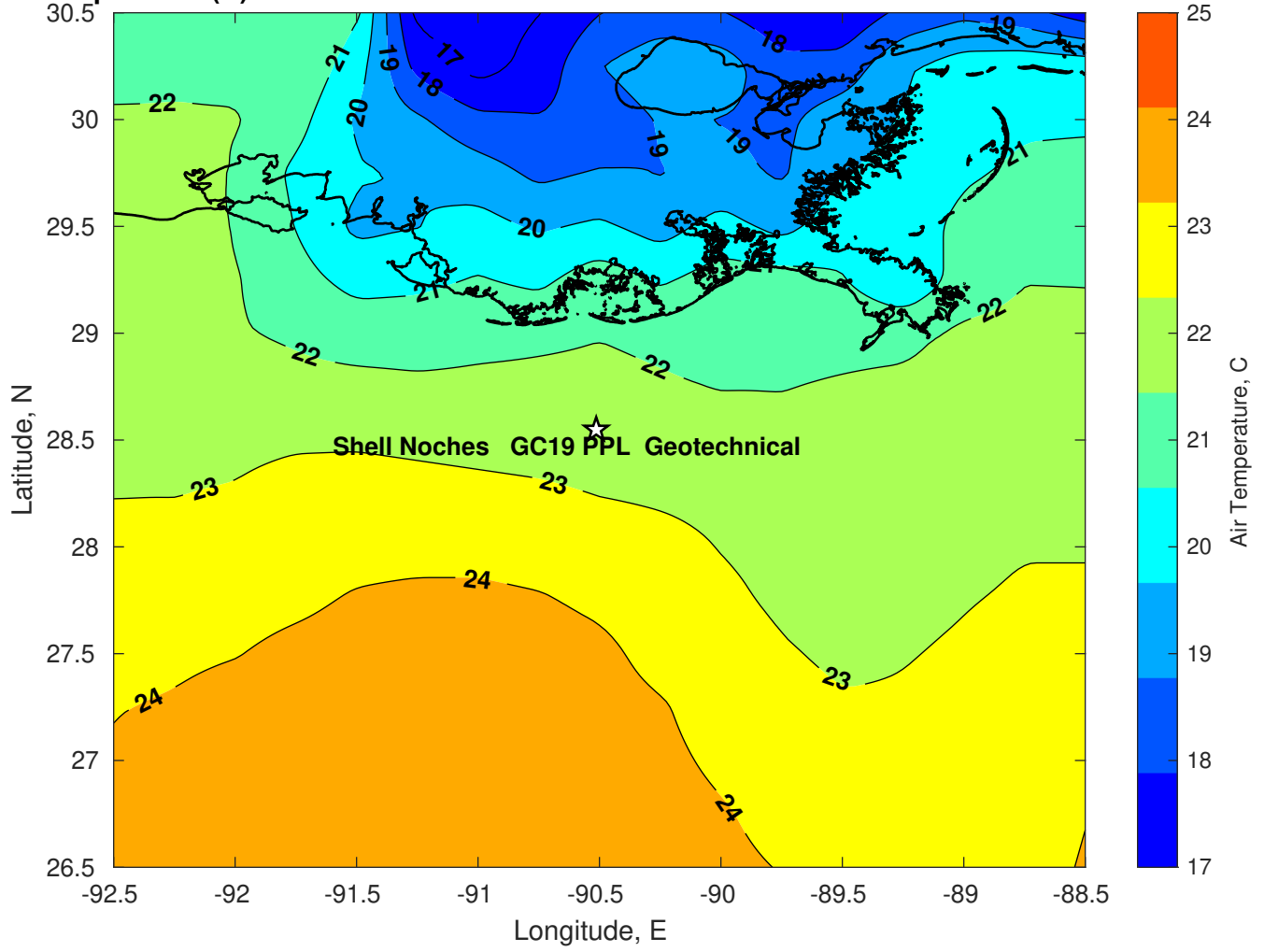
Surface Pressure (mb) for Shell Noches GC19 PPL Geotechnical at 20-Mar-2025 12:00:00



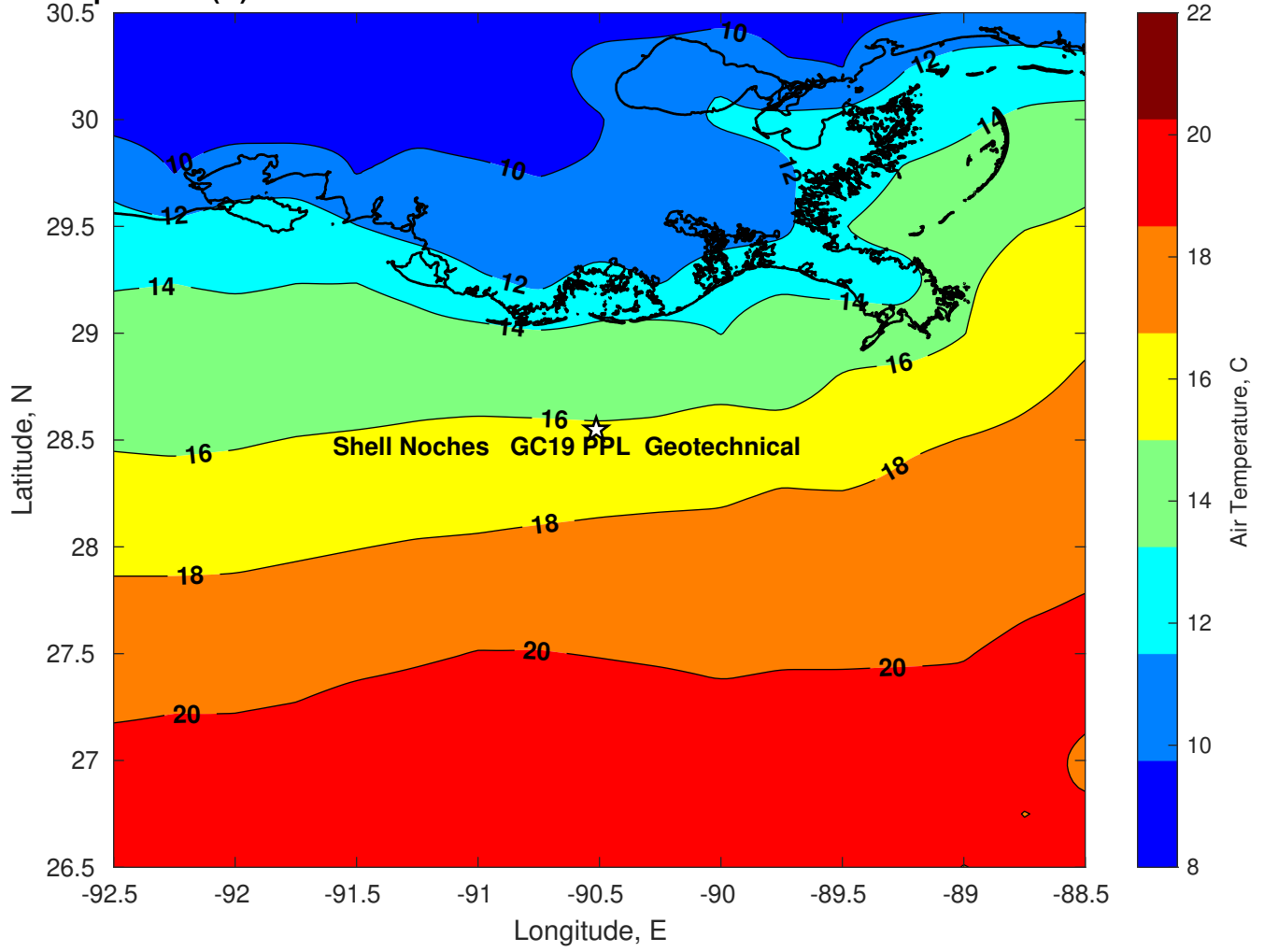
Surface Pressure (mb) for Shell Noches GC19 PPL Geotechnical at 21-Mar-2025 12:00:00



**Air Temperature (C) for Shell Noches GC19 PPL Geotechnical at 19-Mar-2025**



**Air Temperature (C) for Shell Noches GC19 PPL Geotechnical at 19-Mar-2025**



**Air Temperature (C) for Shell Noches GC19 PPL Geotechnical at 19-Mar-2025**

