
Marine Weather Forecast for Tampnet P2378 South Texas Cable Route Geophysical
Forecast valid as of 19-Mar-2025 2000 GMT

All times are local.

Today

Winds: N, 15-20 kts.
Waves: NE, 4-5 feet, 6-7 sec.
Currents: N, 0.5-1 kts.

Tonight

Winds: NE, 20-25 kts.
Waves: NE, 5-6 feet, 6-7 sec.
Currents: SW, less than 0.5 knot.

Thursday

Winds: NE, 20-25 kts.
Waves: NE, 7-8 feet, 7-8 sec.
Currents: SW, less than 0.5 knot.

Thursday Night

Winds: E, 15-20 kts.
Waves: NE, 4-5 feet, 7-8 sec.
Currents: SW, less than 0.5 knot.

Friday

Winds: NE, 15-20 kts.
Waves: NE, 4-5 feet, 6-7 sec.
Currents: N, less than 0.5 knot.

Friday Night

Winds: NE, 15-20 kts.
Waves: NE, 4-5 feet, 5-6 sec.
Currents: N, 0.5-1 kts.

Saturday

Winds: NE, 15-20 kts.
Waves: NE, 4-5 feet, 5-6 sec.
Currents: N, less than 0.5 knot.

Saturday Night

Winds: NE, 15-20 kts.
Waves: NE, 3-4 feet, 5-6 sec.
Currents: N, less than 0.5 knot.

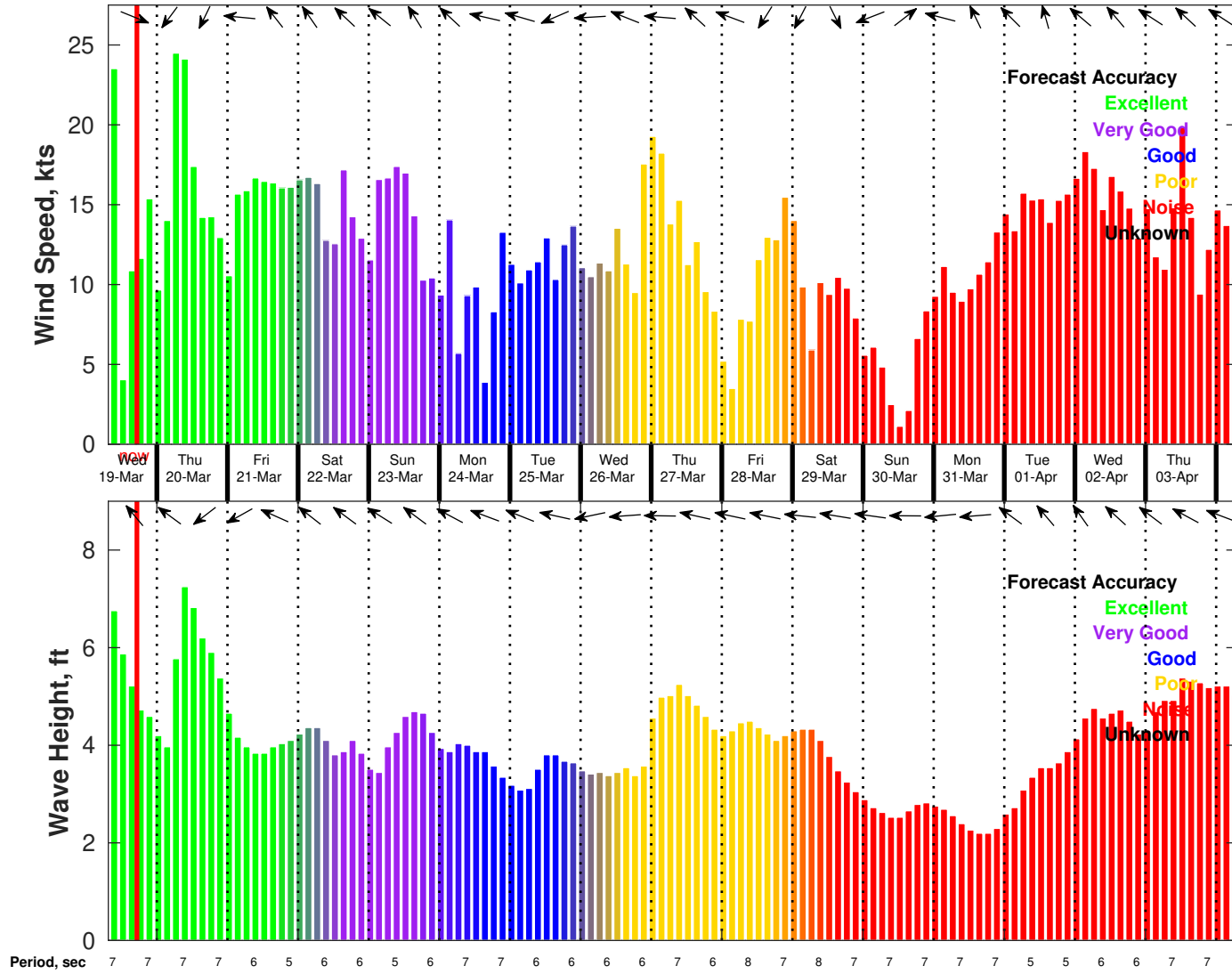
Sunday

Winds: NE, 15-20 kts.
Waves: NE, 4-5 feet, 6-7 sec.
Currents: N, less than 0.5 knot.

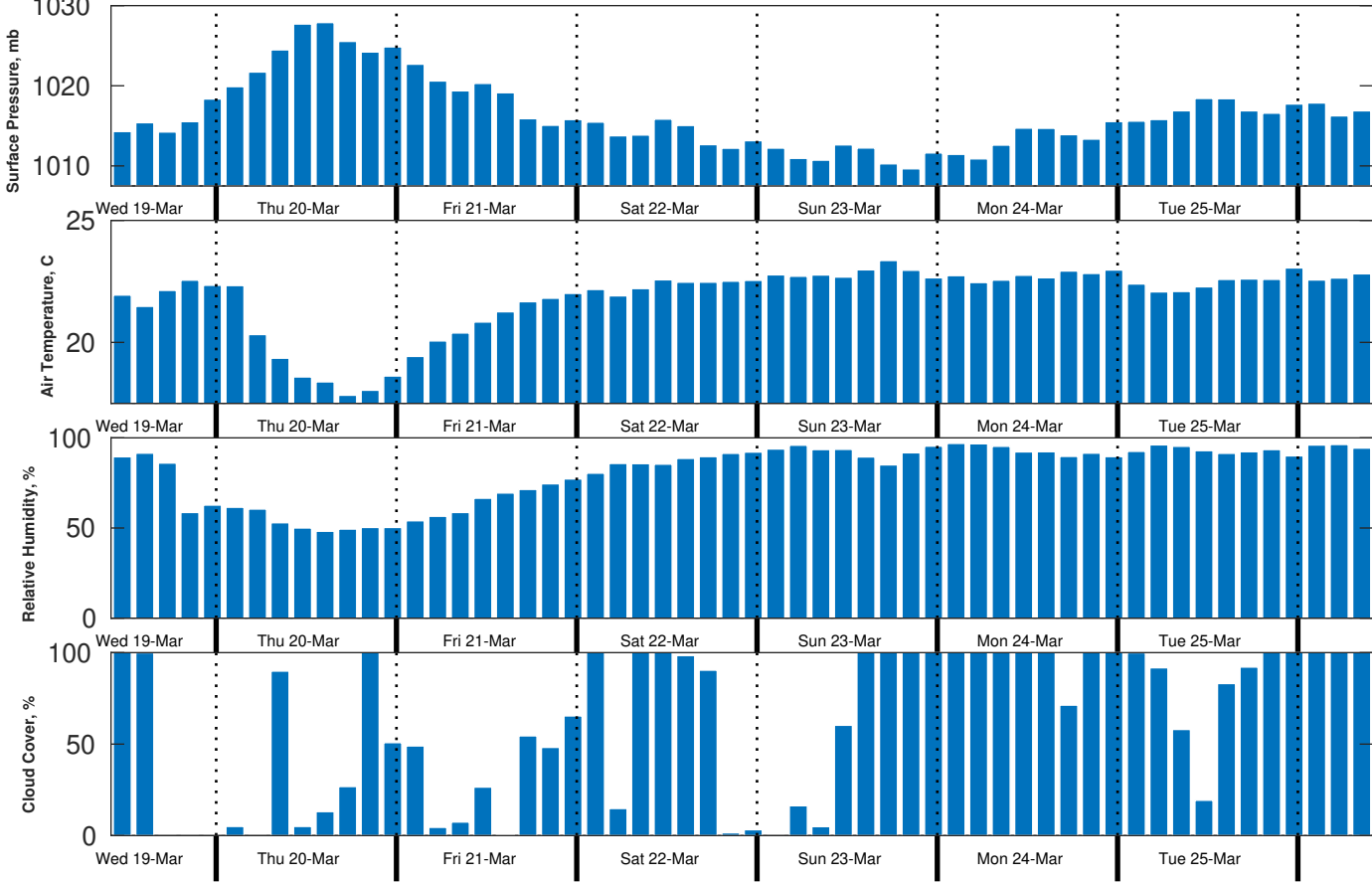
Sunday Night

Winds: NE, 10-15 kts.
Waves: NE, 4-5 feet, 6-7 sec.
Currents: NE, less than 0.5 knot.

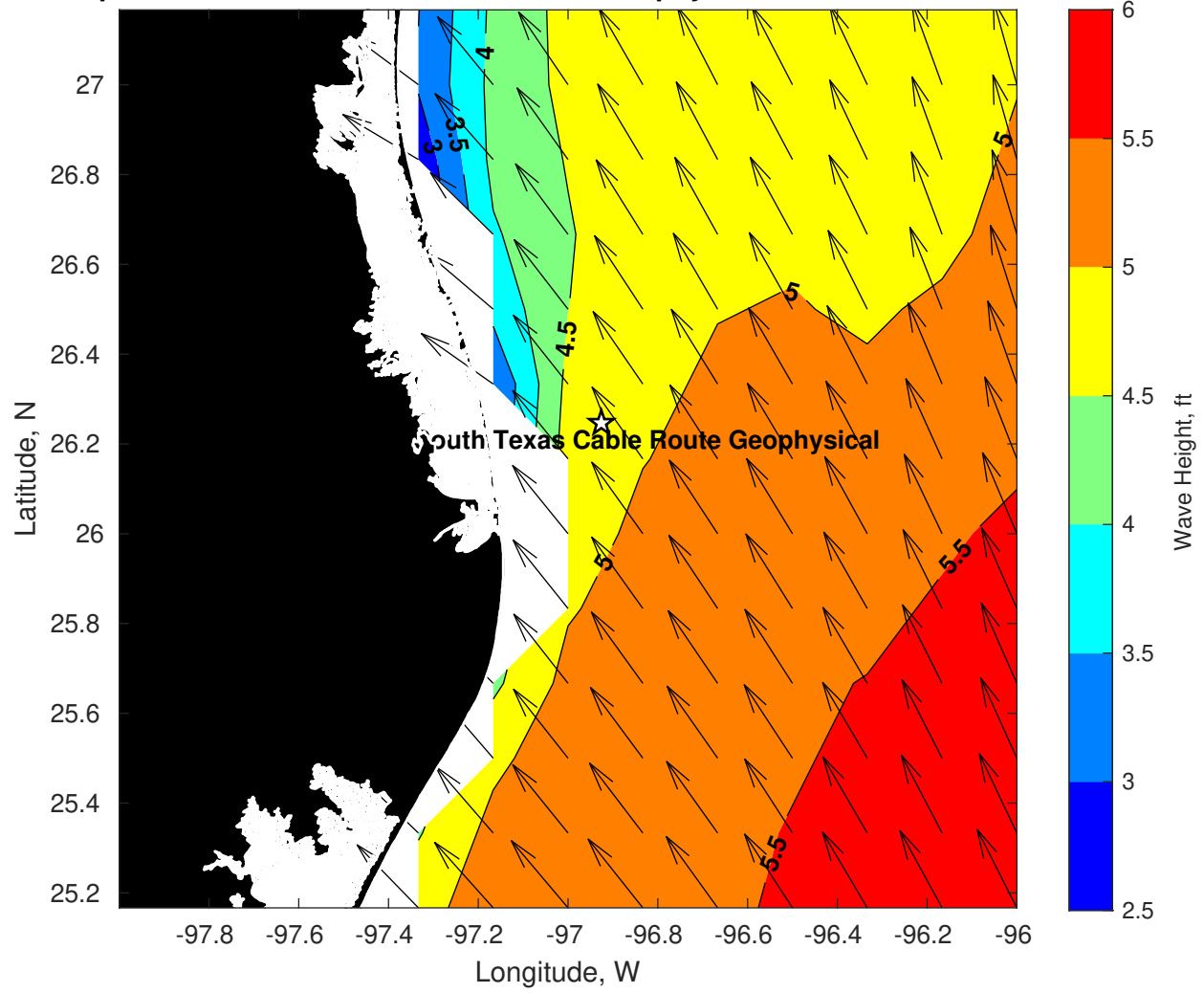
Wind & Wave Forecast for Tampnet P2378 South Texas Cable Route Geophysical from 19-Mar-2025 08:00:00 to 04-Apr-2025 08:00:00



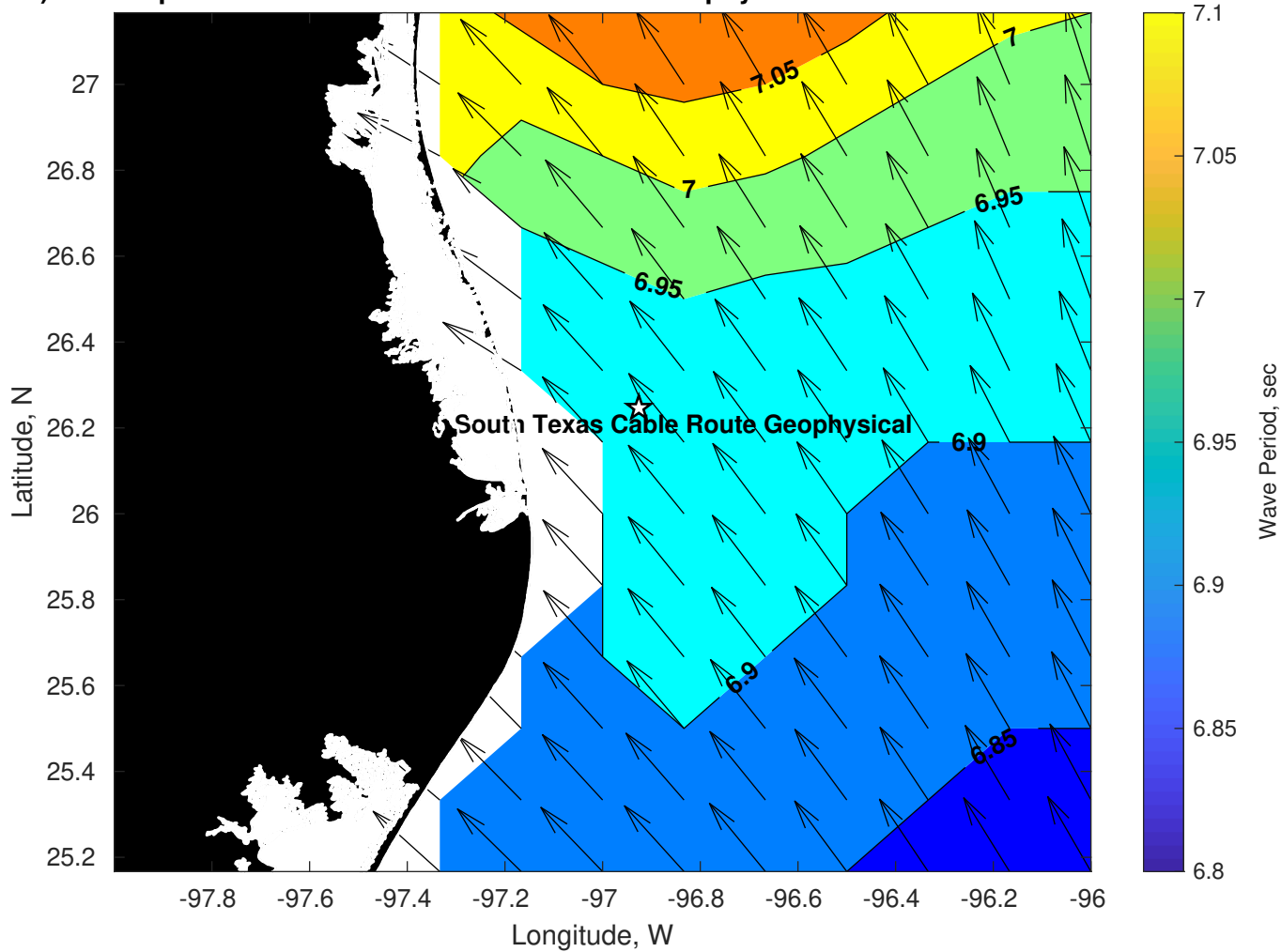
Met Forecast for Tampnet P2378 South Texas Cable Route Geophysical from 19-Mar-2025 12:00:00 to 26-Mar-2025 12:00:00



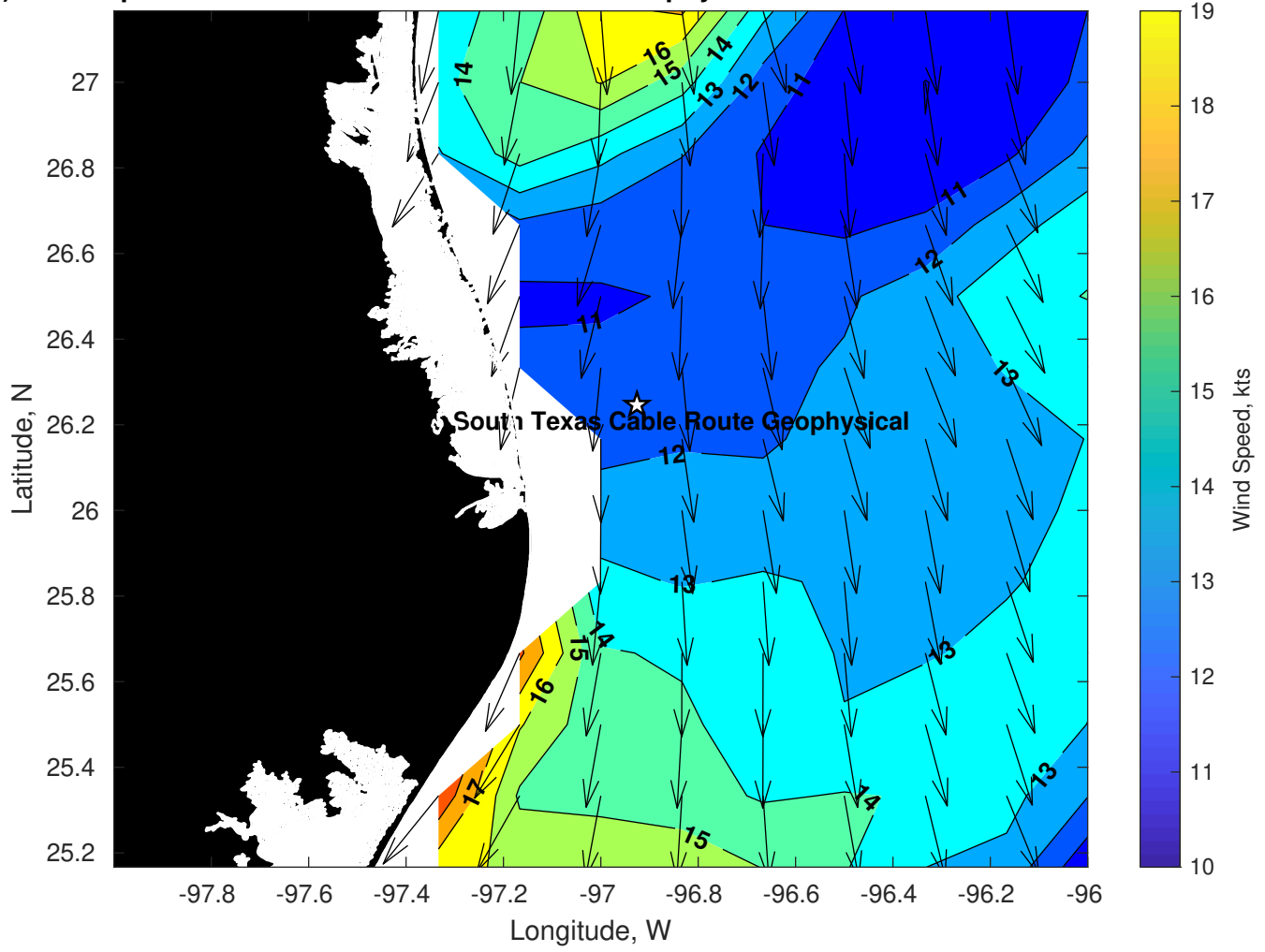
Wave Height (ft) for Tampnet P2378 South Texas Cable Route Geophysical at 19-Mar-2025 21:00:00



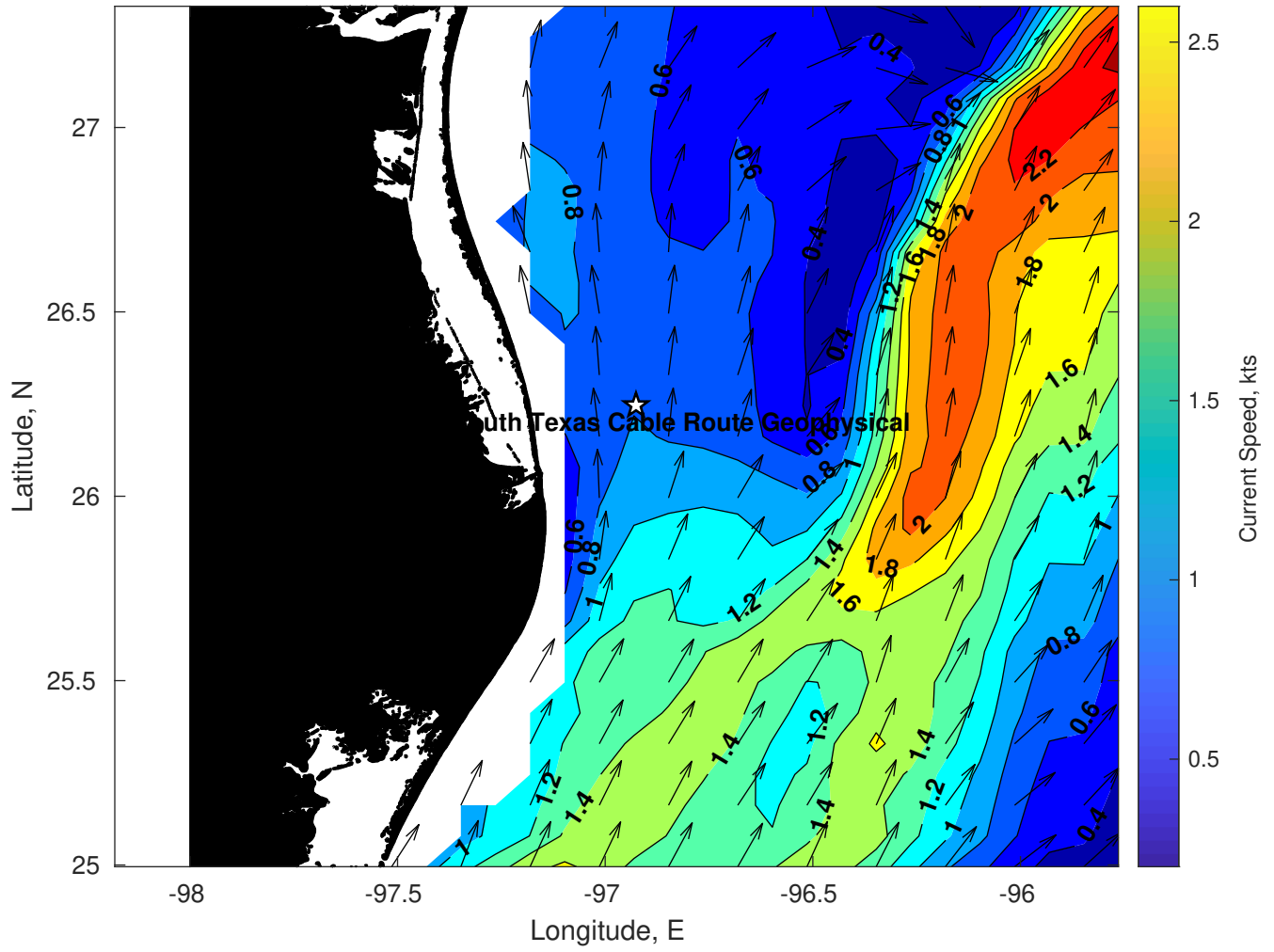
Period (sec) for Tampnet P2378 South Texas Cable Route Geophysical at 19-Mar-2025 21:00:00



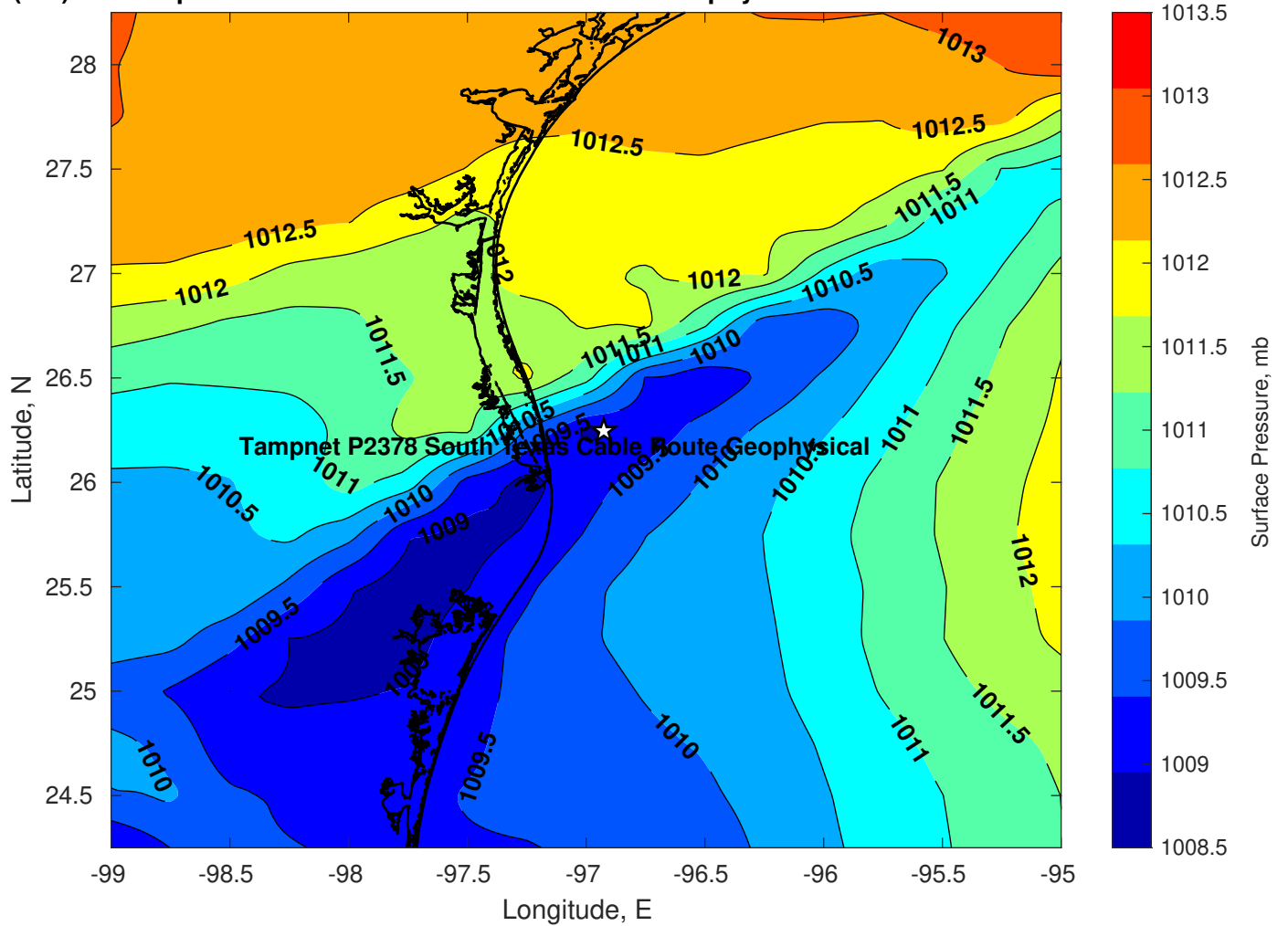
Winds (kts) for Tampnet P2378 South Texas Cable Route Geophysical at 19-Mar-2025 21:00:00



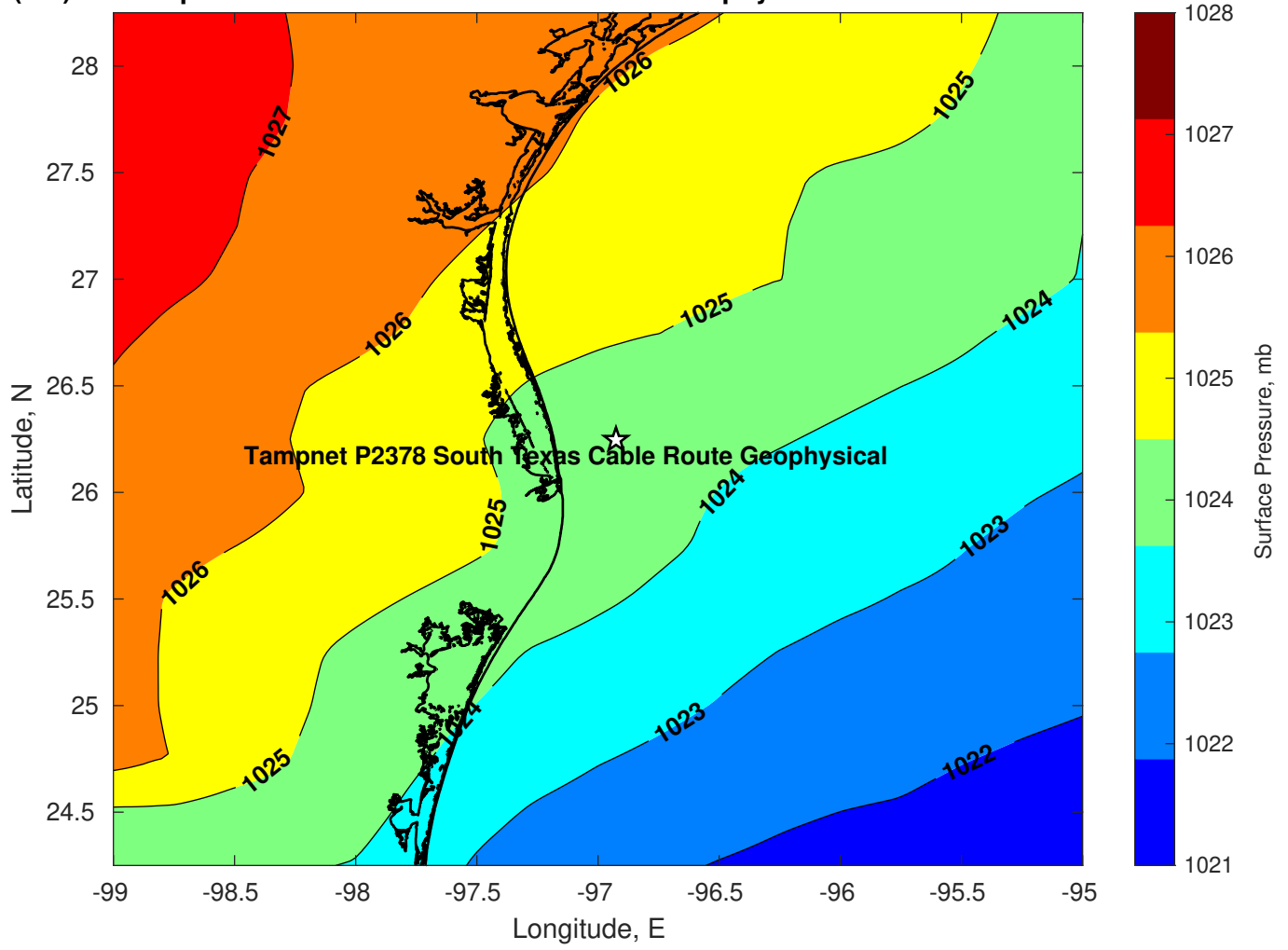
Surface Currents for Tampnet P2378 South Texas Cable Route Geophysical at 19-Mar-2025 00:00:00



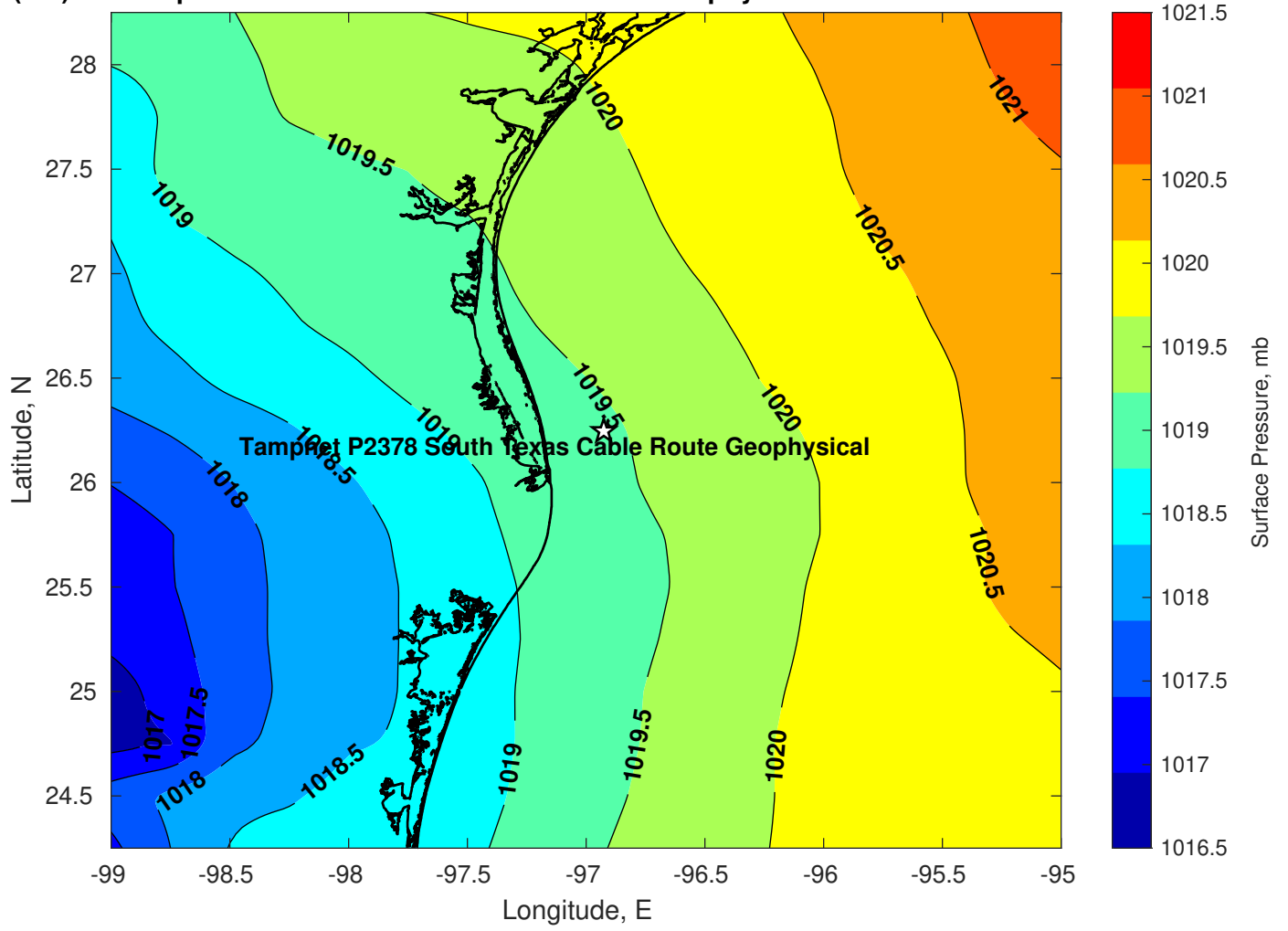
Pressure (mb) for Tampnet P2378 South Texas Cable Route Geophysical at 19-Mar-2025 12:00:00



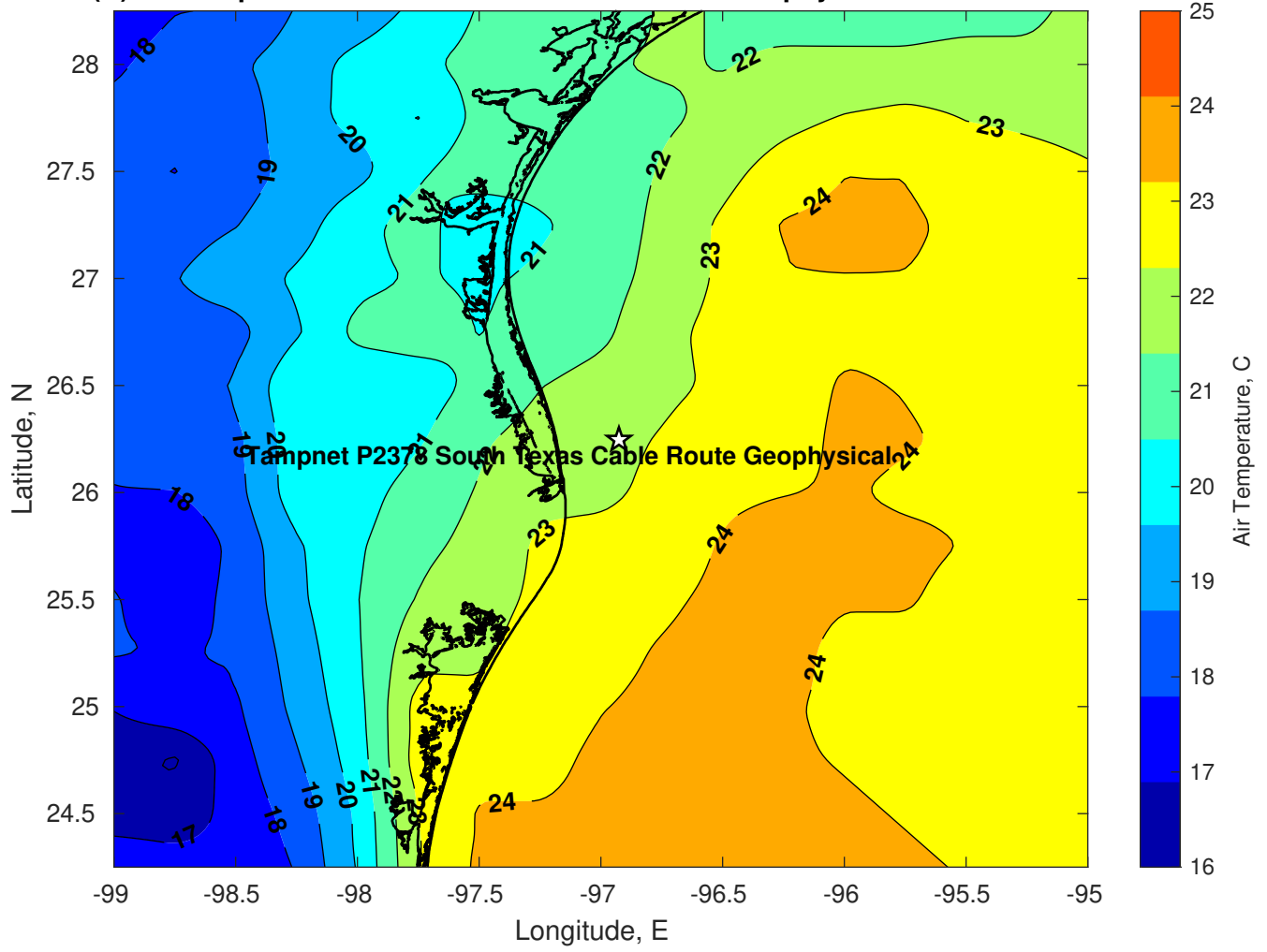
Pressure (mb) for Tampnet P2378 South Texas Cable Route Geophysical at 20-Mar-2025 12:00:00



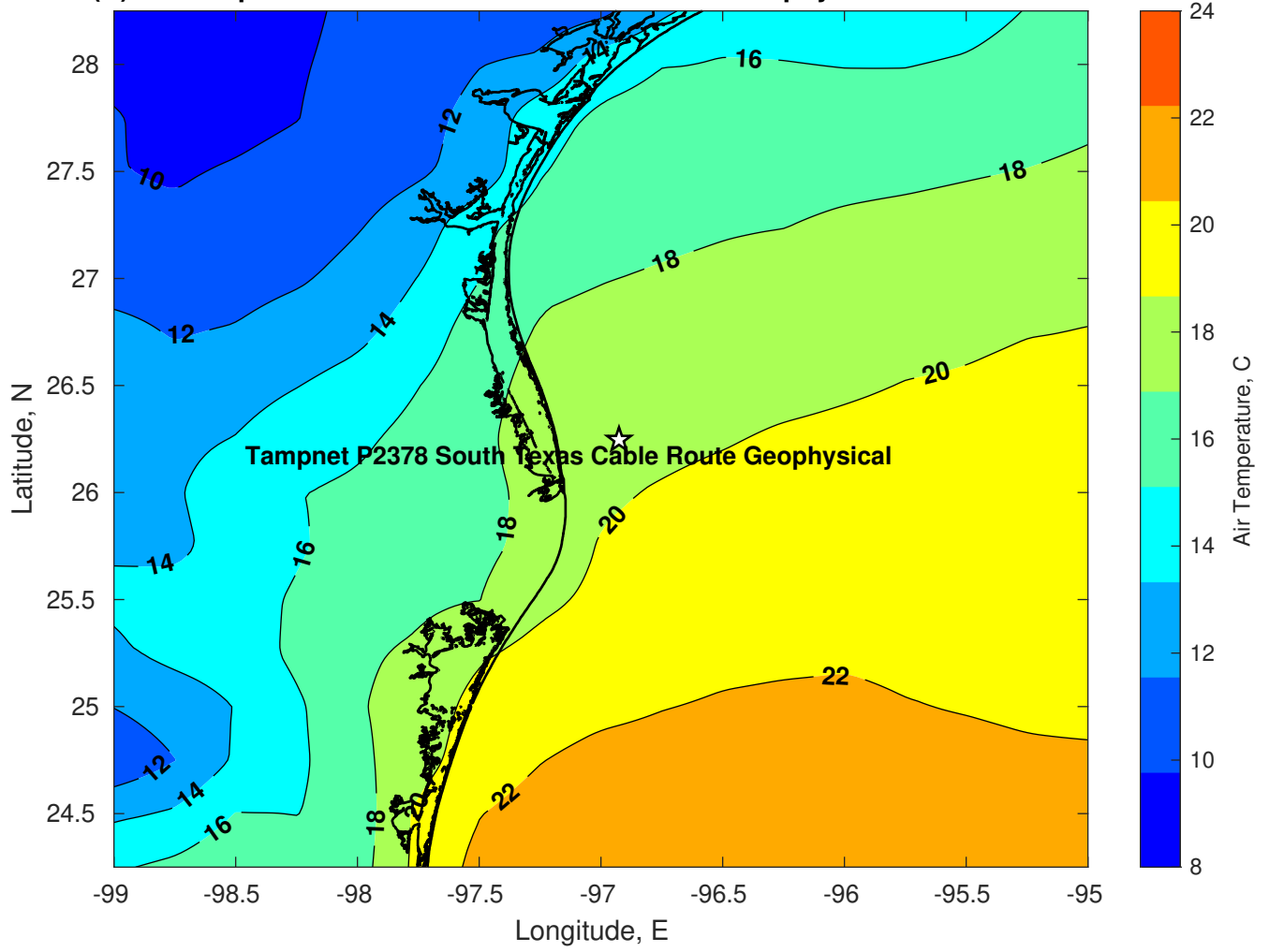
Pressure (mb) for Tampnet P2378 South Texas Cable Route Geophysical at 21-Mar-2025 12:00:00



Air Temperature (C) for Tampnet P2378 South Texas Cable Route Geophysical at 19-Mar-2025



Air Temperature (C) for Tampnet P2378 South Texas Cable Route Geophysical at 19-Mar-2025



Air Temperature (C) for Tampnet P2378 South Texas Cable Route Geophysical at 19-Mar-2025

