
Marine Weather Forecast for CSA (ONHYM) PPL EBS - Western Sahara

Forecast valid as of 19-Mar-2025 2000 GMT

All times are local.

Today

Winds: NE, 5-10 kts.

Waves: NW, 4-5 feet, 11-12 sec.

Currents: SW, less than 0.5 knot.

Tonight

Winds: NE, 15-20 kts.

Waves: NW, 6-7 feet, 11-12 sec.

Currents: SW, less than 0.5 knot.

Thursday

Winds: NE, 10-15 kts.

Waves: NW, 5-6 feet, 11-12 sec.

Currents: SW, less than 0.5 knot.

Friday Night

Winds: NE, 20-25 kts.

Waves: NW, 7-8 feet, 12-13 sec.

Currents: SW, 0.5-1 kts.

Friday

Winds: NE, 15-20 kts.

Waves: NW, 6-7 feet, 12-13 sec.

Currents: SW, 0.5-1 kts.

Saturday Night

Winds: NE, 25-30 kts.

Waves: N, 7-8 feet, 6-7 sec.

Currents: SW, 0.5-1 kts.

Saturday

Winds: NE, 20-25 kts.

Waves: NW, 7-8 feet, 11-12 sec.

Currents: SW, 0.5-1 kts.

Sunday Night

Winds: NE, 25-30 kts.

Waves: N, 8-9 feet, 7-8 sec.

Currents: SW, 0.5-1 kts.

Sunday

Winds: NE, 25-30 kts.

Waves: N, 7-8 feet, 8-9 sec.

Currents: SW, 0.5-1 kts.

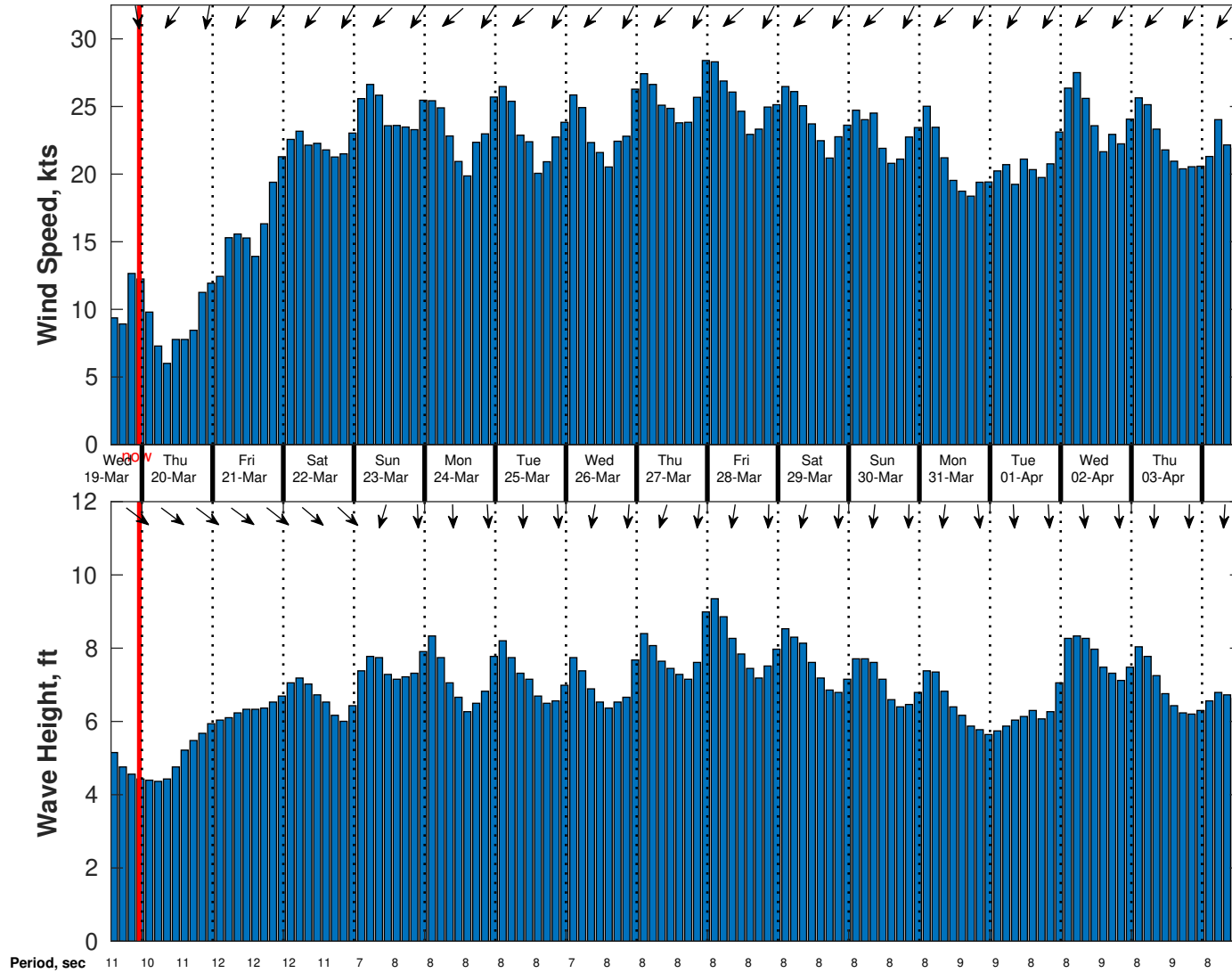
Monday Night

Winds: NE, 25-30 kts.

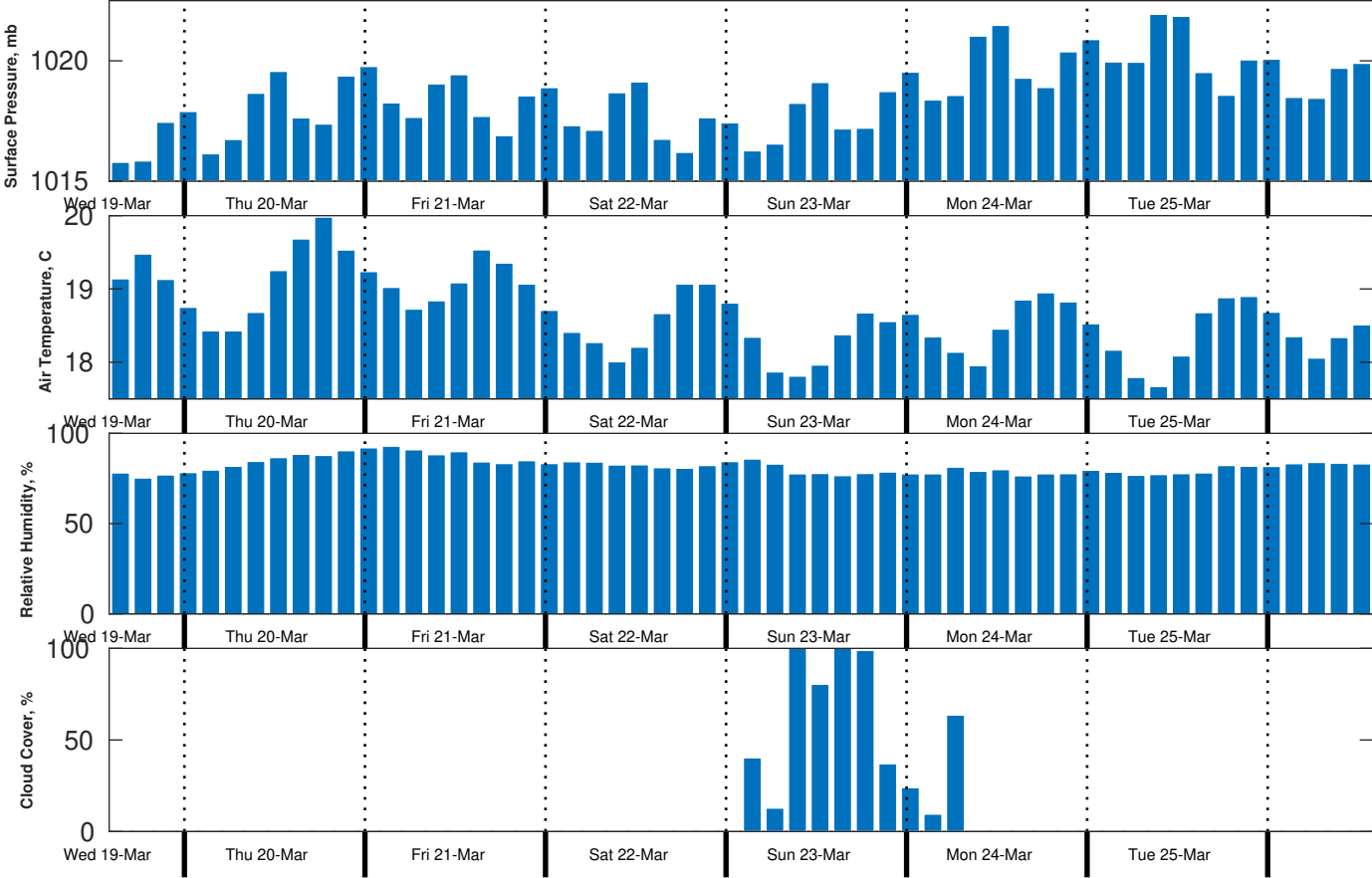
Waves: N, 8-9 feet, 7-8 sec.

Currents: SW, 1-1.5 kts.

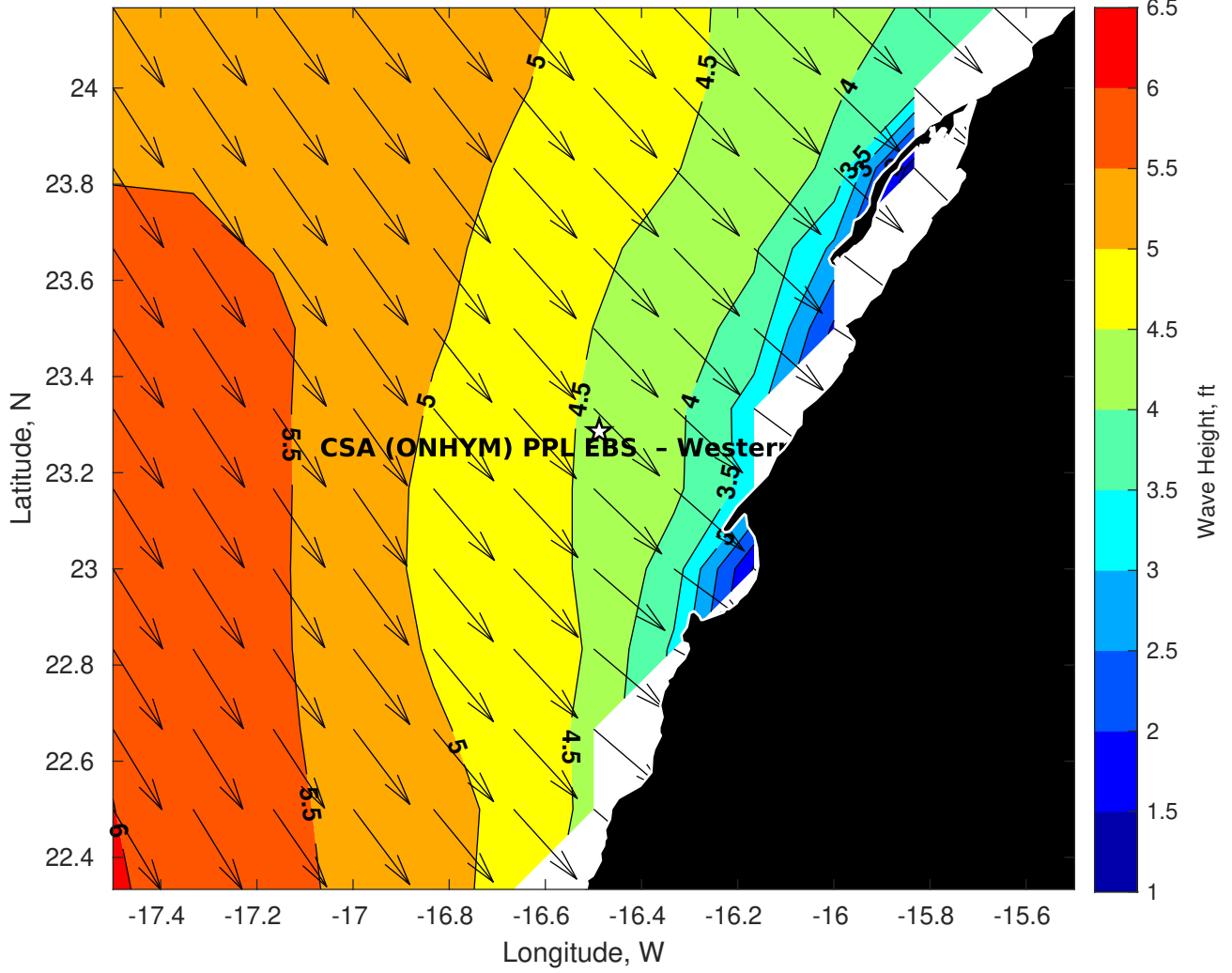
Wind & Wave Forecast for CSA (ONHYM) PPL EBS - Western Sahara from 19-Mar-2025 13:00:00 to 04-Apr-2025 13:00:00



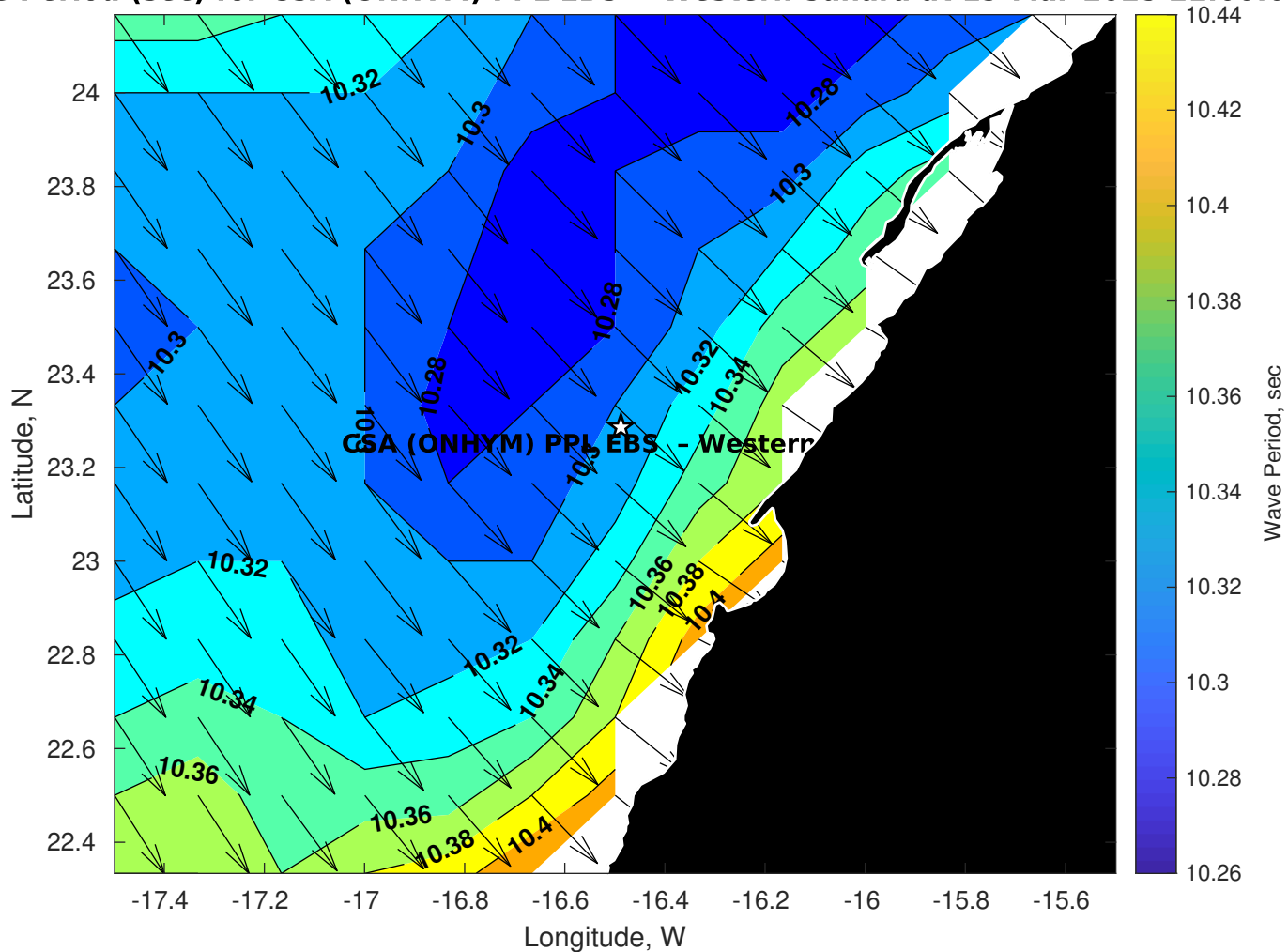
Met Forecast for CSA (ONHYM) PPL EBS - Western Sahara from 19-Mar-2025 12:00:00 to 26-Mar-2025 12:00:00



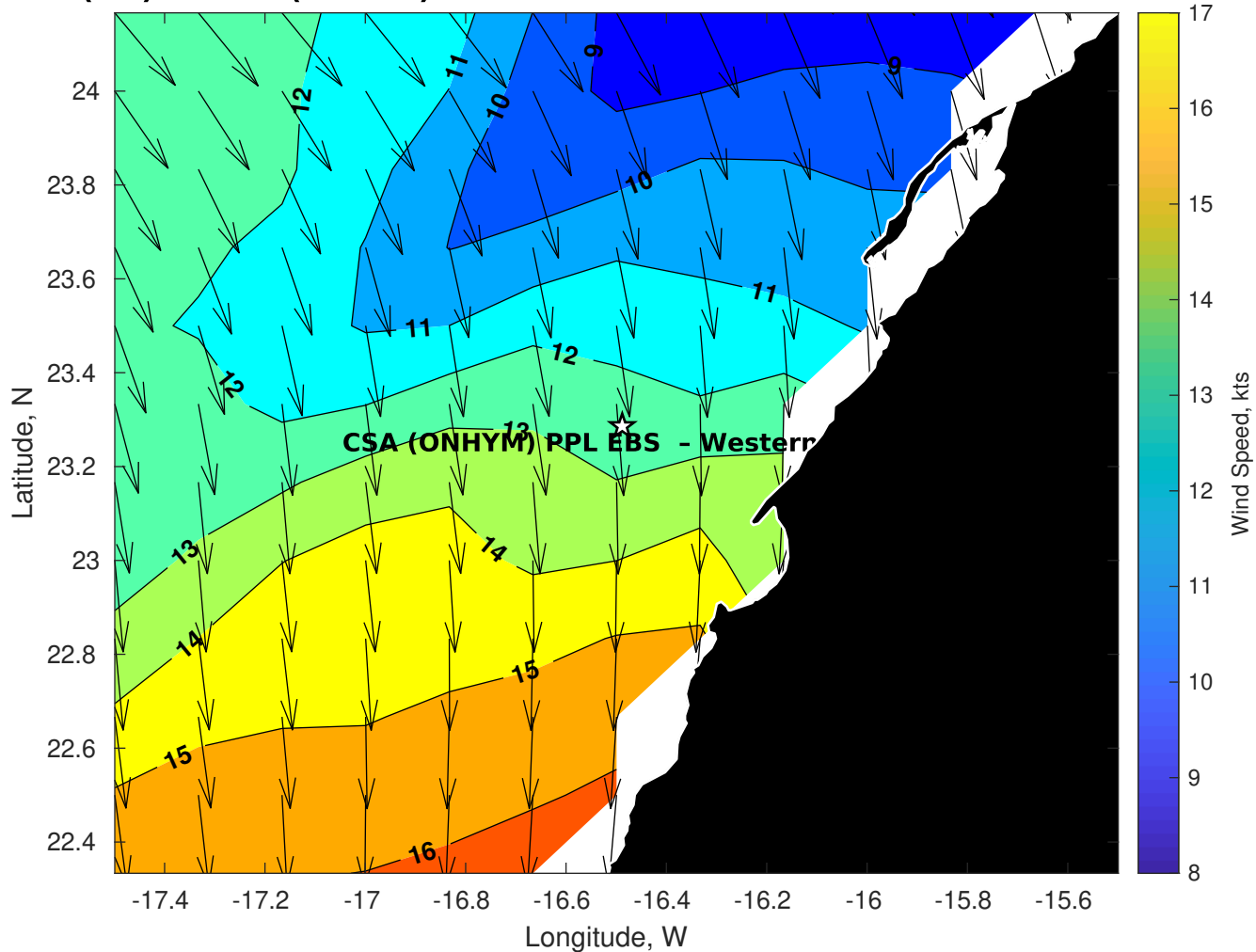
Wave Height (ft) for CSA (ONHYM) PPL EBS - Western Sahara at 19-Mar-2025 21:00:00



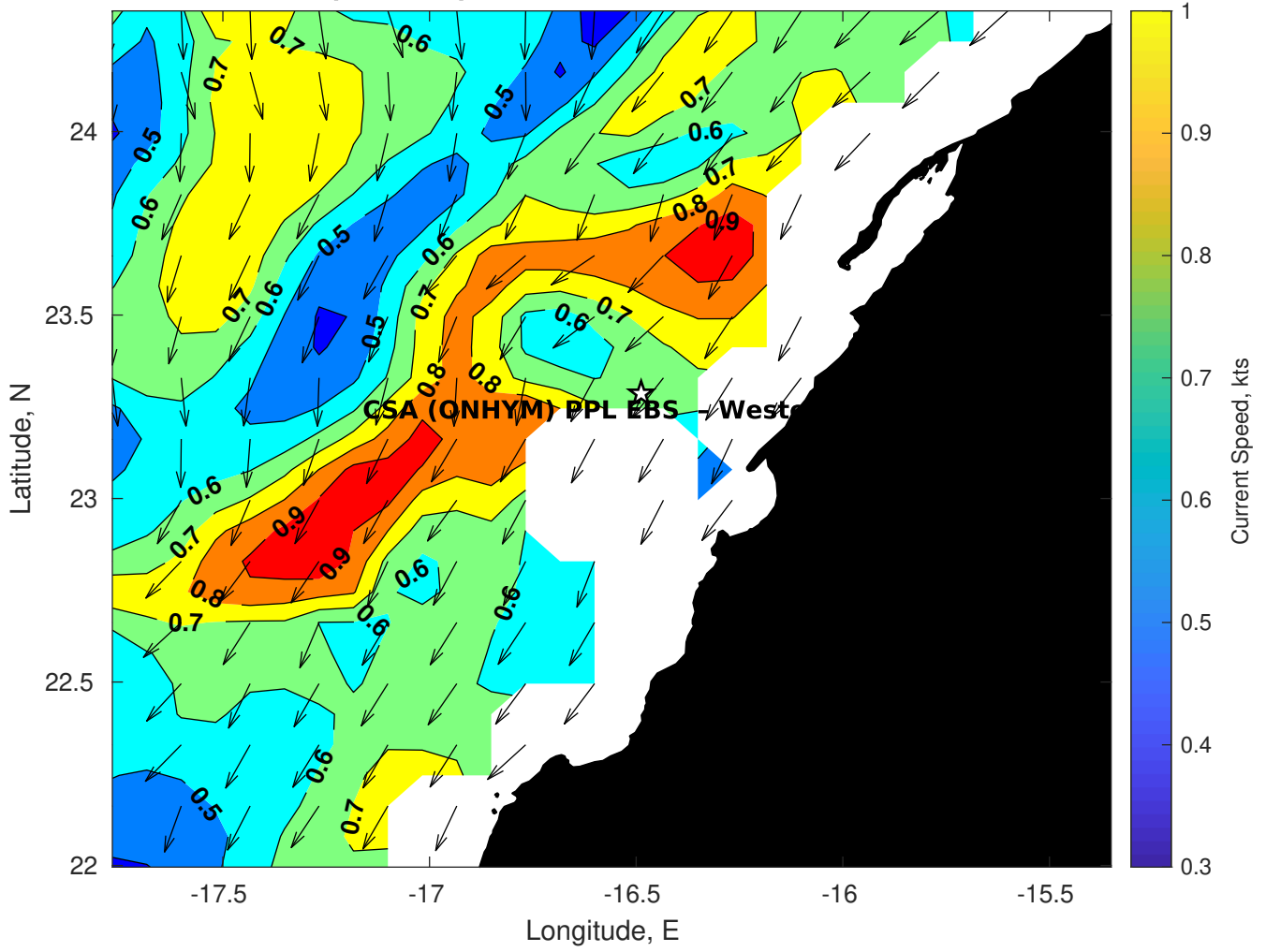
Wave Period (sec) for CSA (ONHYM) PPL EBS - Western Sahara at 19-Mar-2025 21:00:00



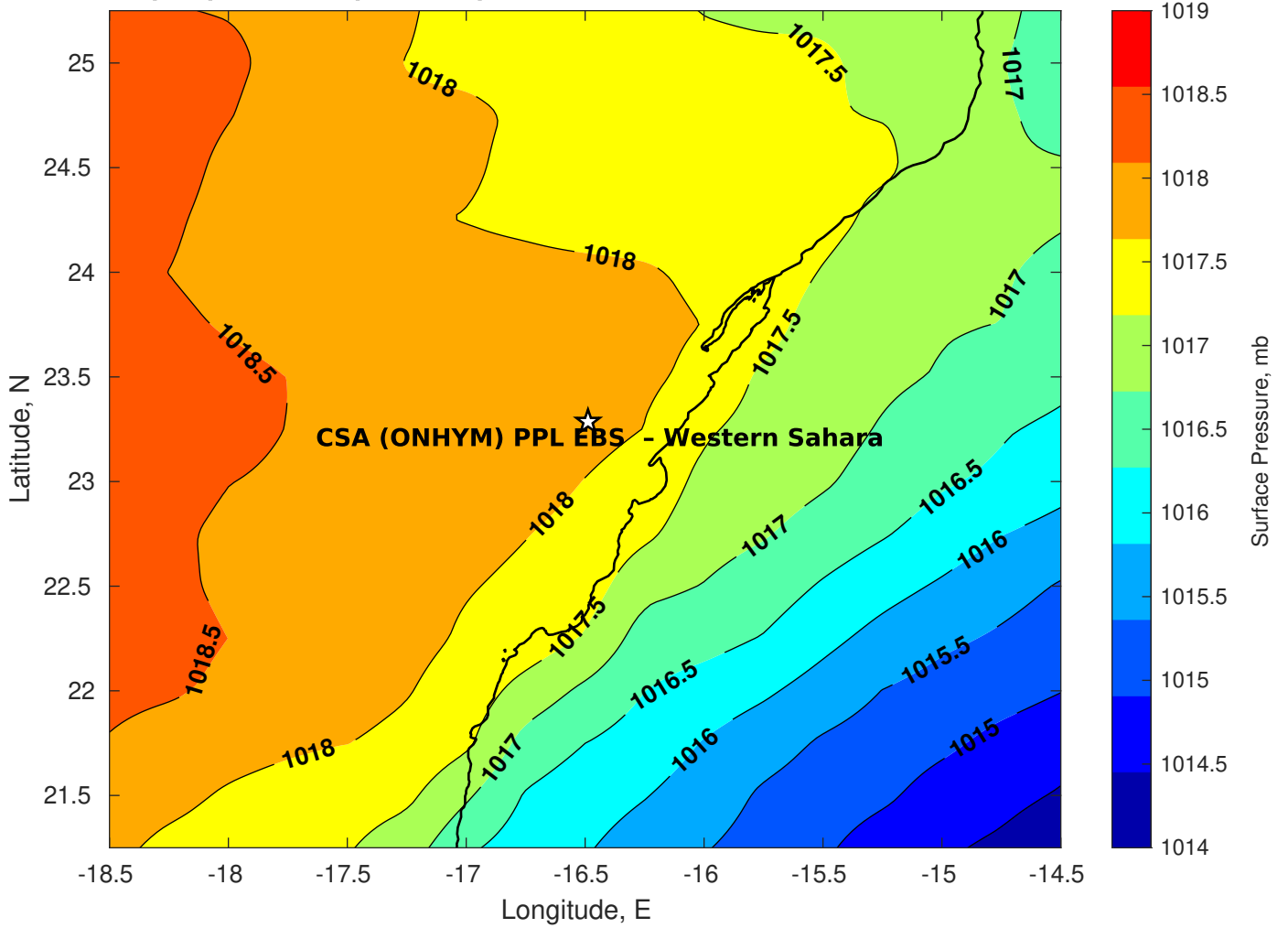
Winds (kts) for CSA (ONHYM) PPL EBS - Western Sahara at 19-Mar-2025 21:00:00



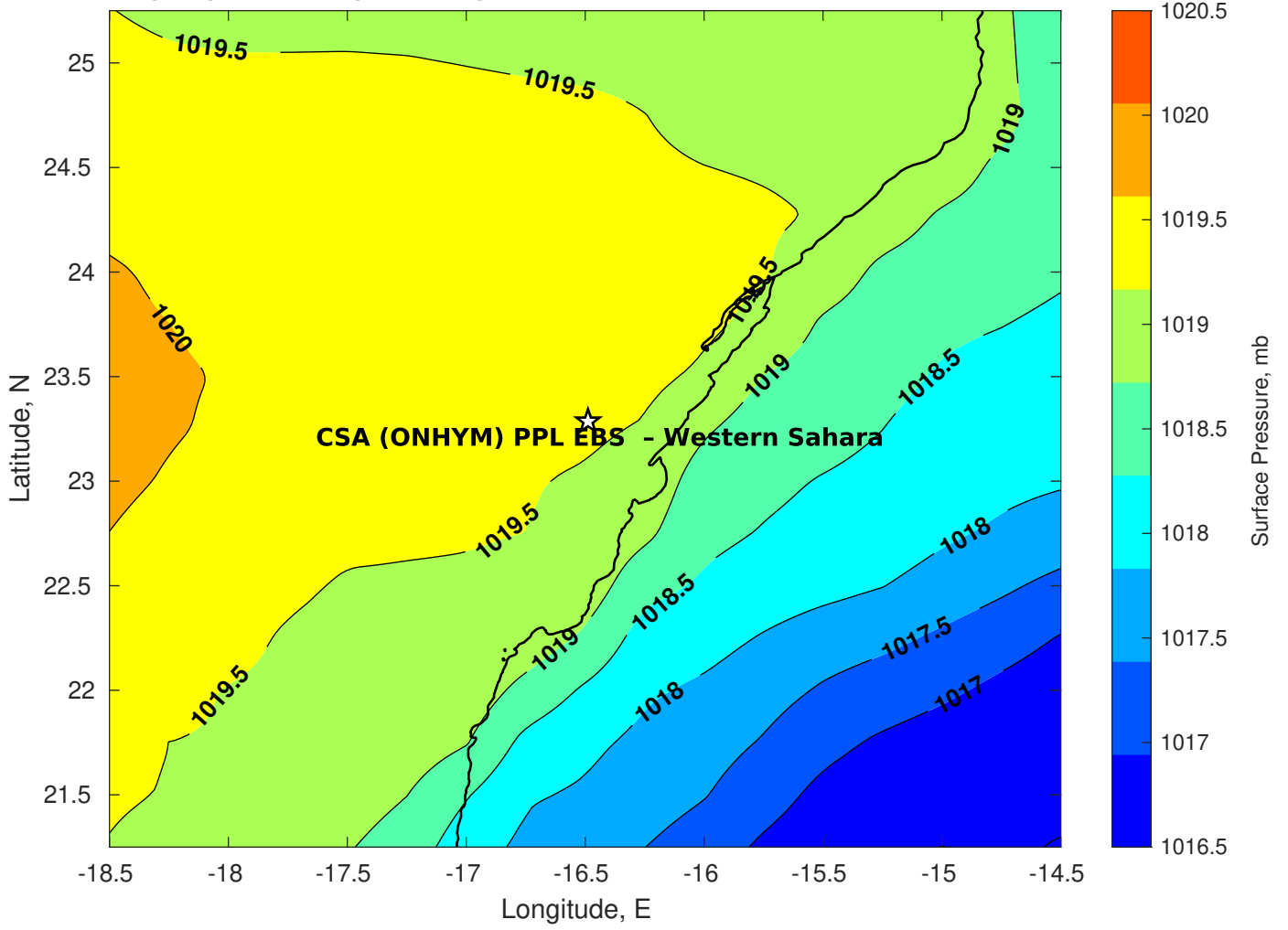
Surface Currents for CSA (ONHYM) PPL EBS - Western Sahara at 19-Mar-2025 00:00:00



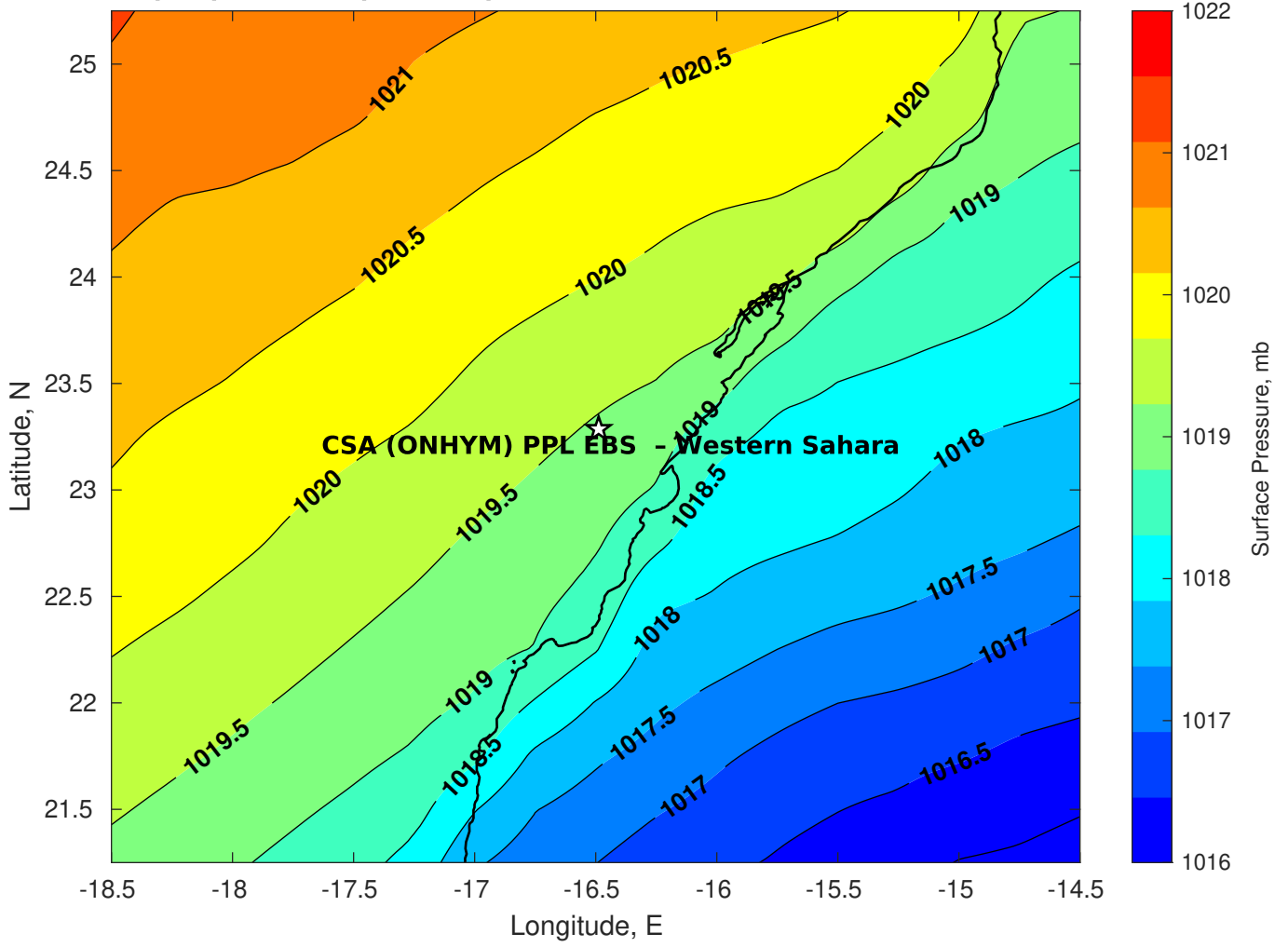
Surface Pressure (mb) for CSA (ONHYM) PPL EBS - Western Sahara at 19-Mar-2025 12:00:00



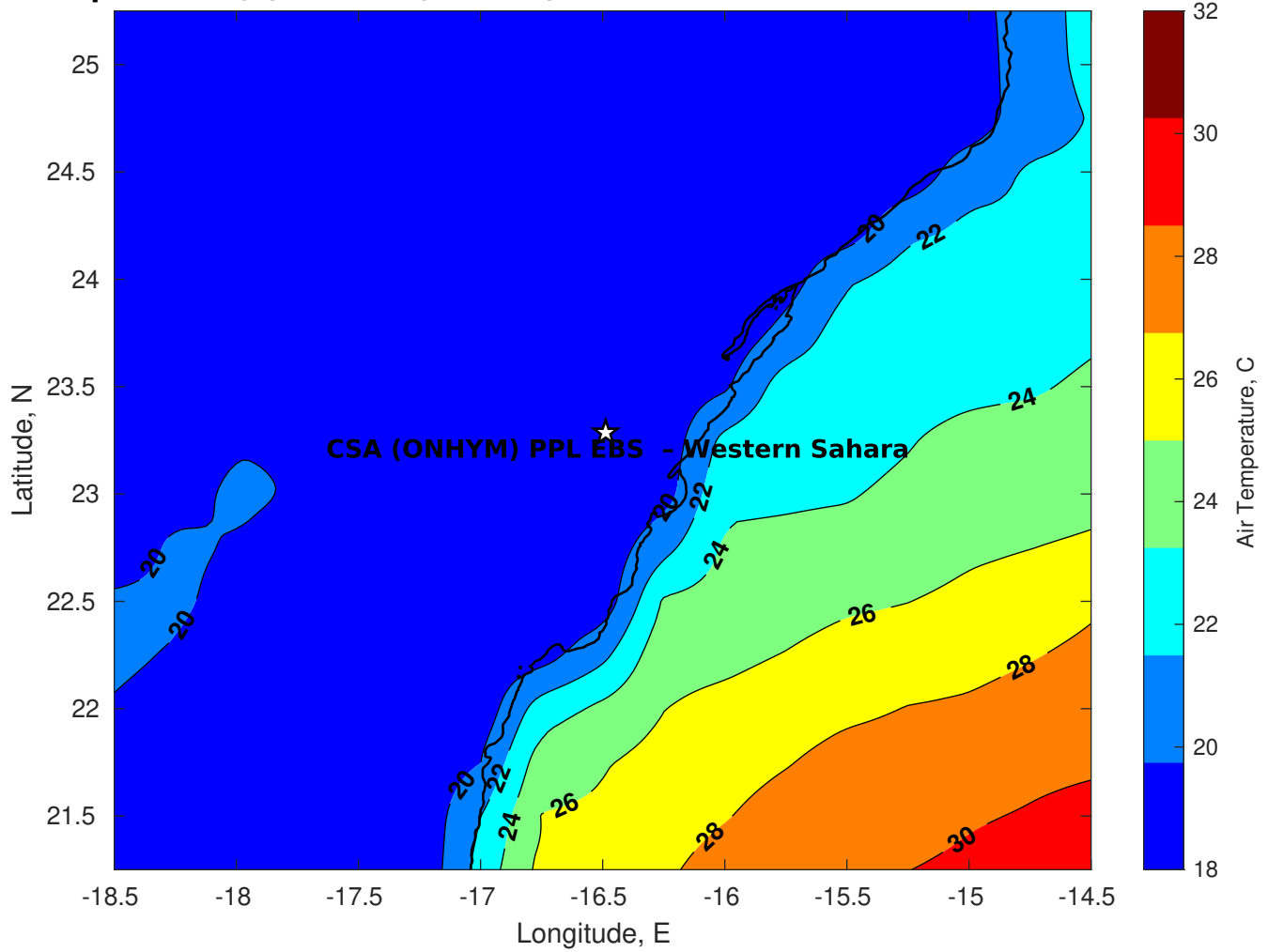
Surface Pressure (mb) for CSA (ONHYM) PPL EBS - Western Sahara at 20-Mar-2025 12:00:00



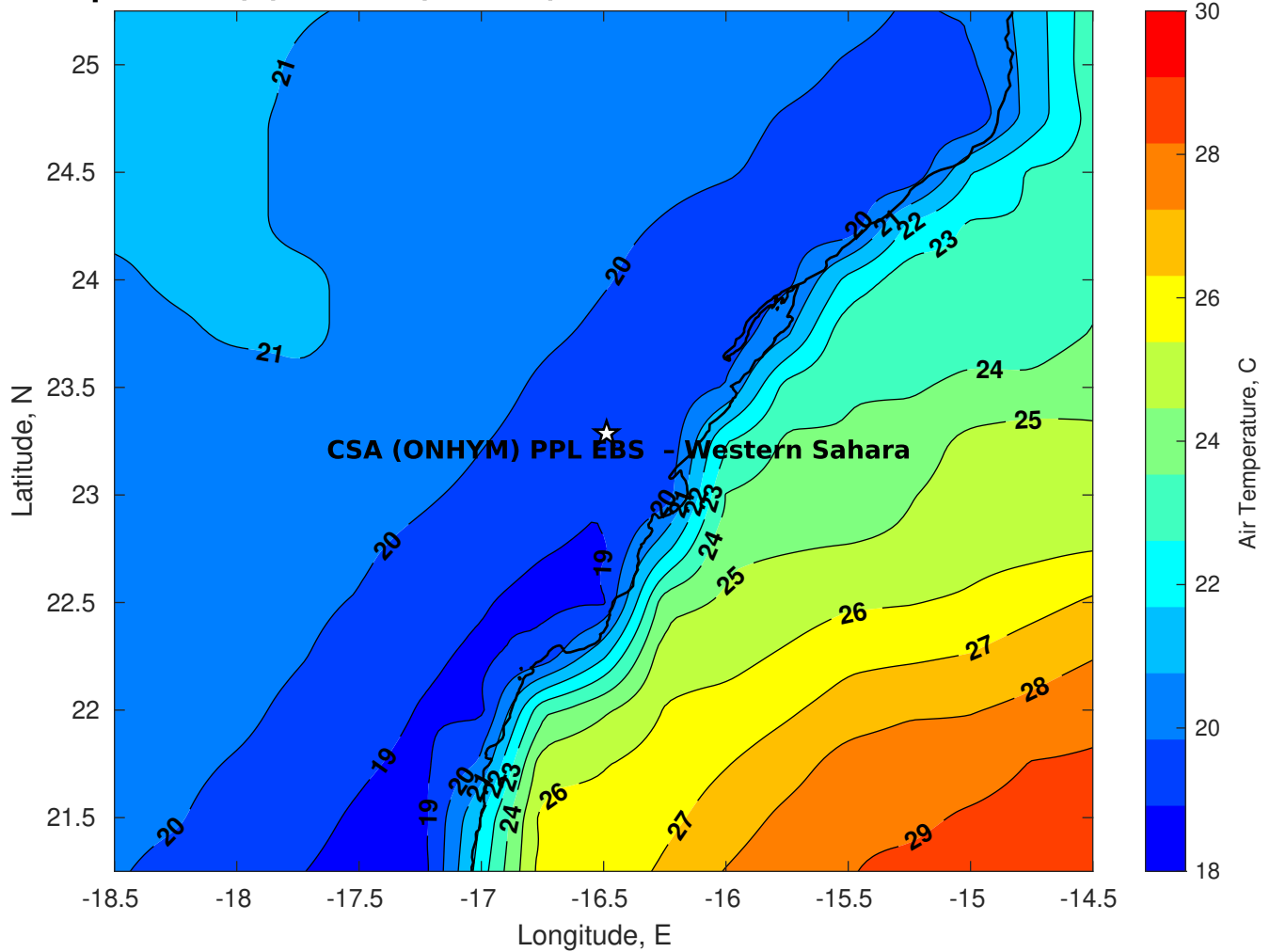
Surface Pressure (mb) for CSA (ONHYM) PPL EBS - Western Sahara at 21-Mar-2025 12:00:00



Air Temperature (C) for CSA (ONHYM) PPL EBS - Western Sahara at 19-Mar-2025



Air Temperature (C) for CSA (ONHYM) PPL EBS - Western Sahara at 19-Mar-2025



Air Temperature (C) for CSA (ONHYM) PPL EBS - Western Sahara at 19-Mar-2025

