
Marine Weather Forecast for CTI Enbridge Kaskida & Tiber PPL Geotechnical
Forecast valid as of 19-Mar-2025 2000 GMT

All times are local.

Today

Winds: W, 10-15 kts.
Waves: N, 5-6 feet, 6-7 sec.
Currents: NW, less than 0.5 knot.

Tonight

Winds: N, 25-30 kts.
Waves: N, 8-9 feet, 6-7 sec.
Currents: S, 0.5-1 kts.

Thursday

Winds: N, 25-30 kts.
Waves: N, 8-9 feet, 7-8 sec.
Currents: SW, 0.5-1 kts.

Thursday Night

Winds: NE, 10-15 kts.
Waves: NW, 4-5 feet, 5-6 sec.
Currents: S, less than 0.5 knot.

Friday

Winds: E, 10-15 kts.
Waves: NE, 2-3 feet, 4-5 sec.
Currents: W, less than 0.5 knot.

Friday Night

Winds: N, 10-15 kts.
Waves: NE, 2-3 feet, 4-5 sec.
Currents: E, less than 0.5 knot.

Saturday

Winds: NE, 10-15 kts.
Waves: NE, 2-3 feet, 4-5 sec.
Currents: S, less than 0.5 knot.

Saturday Night

Winds: NE, 15-20 kts.
Waves: NE, 4-5 feet, 5-6 sec.
Currents: N, less than 0.5 knot.

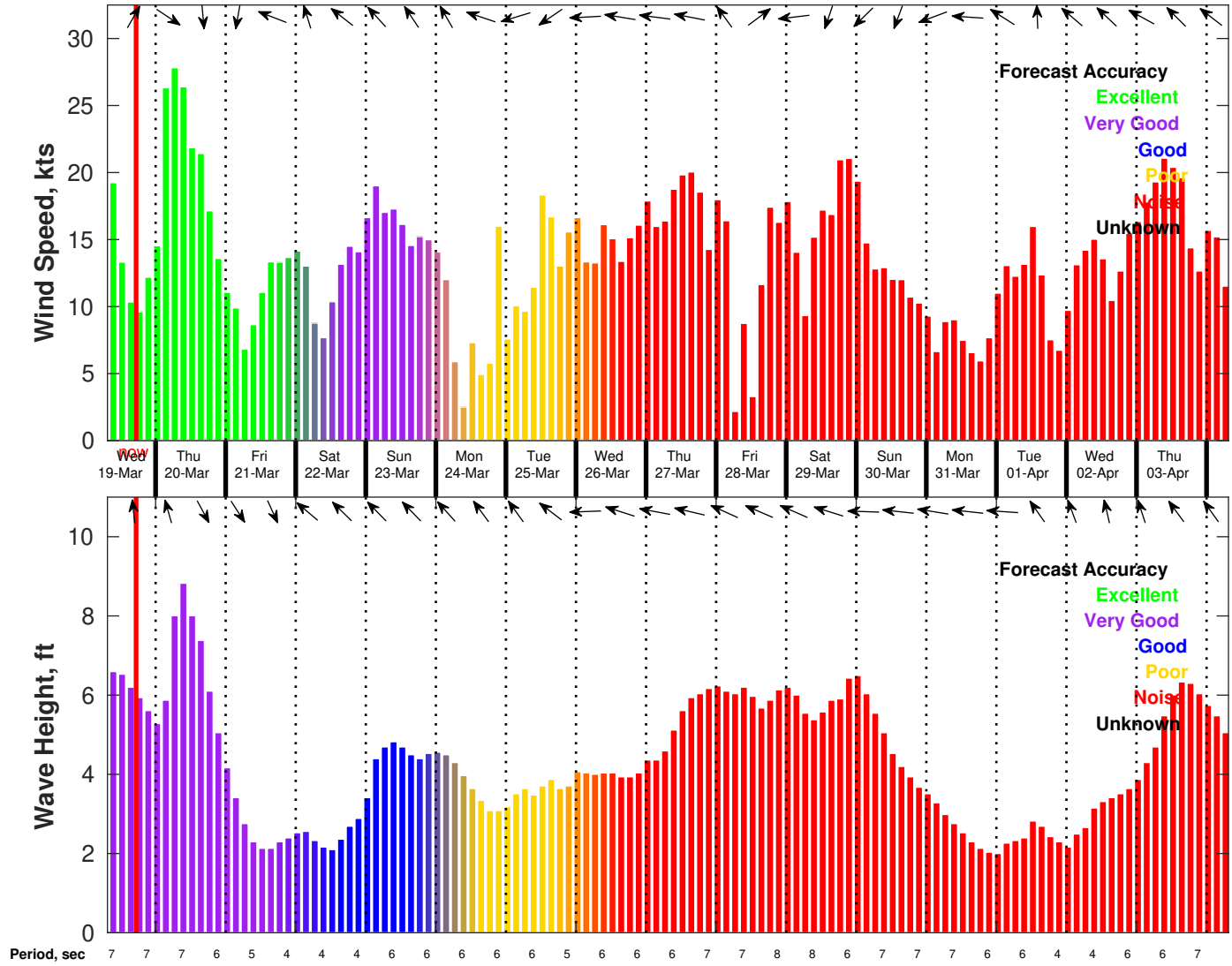
Sunday

Winds: NE, 15-20 kts.
Waves: NE, 4-5 feet, 6-7 sec.
Currents: NE, less than 0.5 knot.

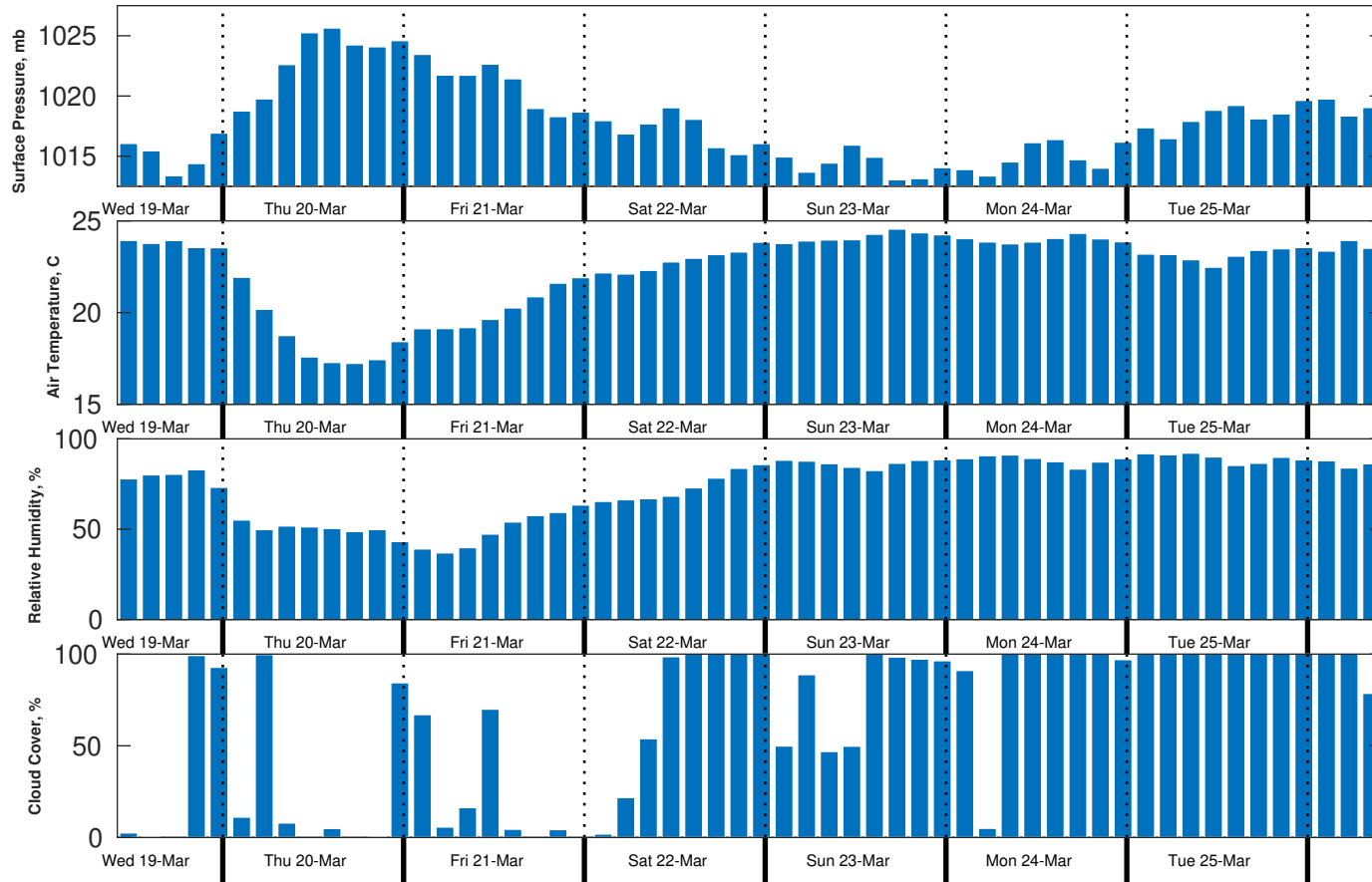
Sunday Night

Winds: NE, 10-15 kts.
Waves: NE, 4-5 feet, 6-7 sec.
Currents: NE, less than 0.5 knot.

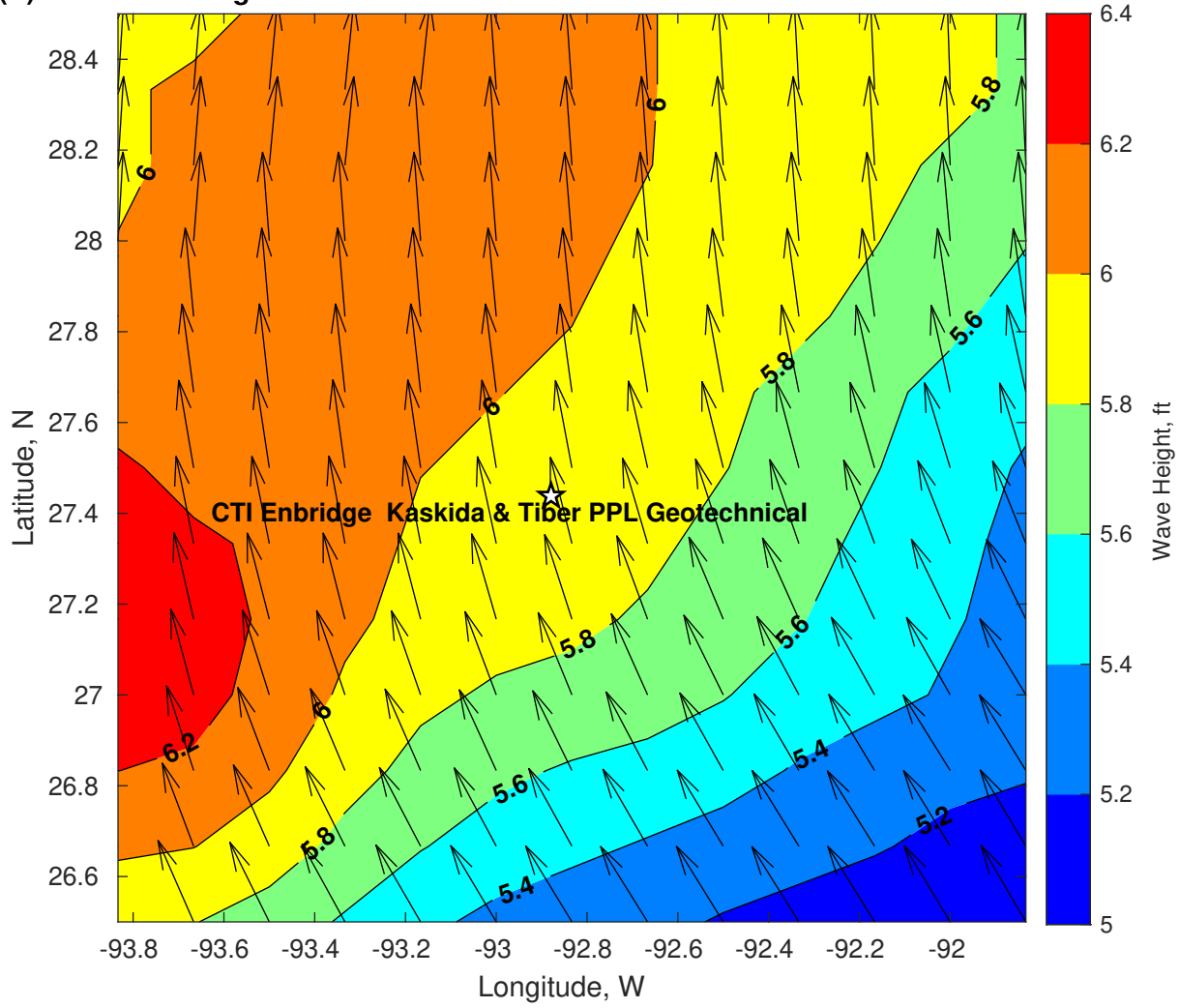
Wind & Wave Forecast for CTI Enbridge Kaskida & Tiber PPL Geotechnical from 19-Mar-2025 08:00:00 to 04-Apr-2025 08:00:00



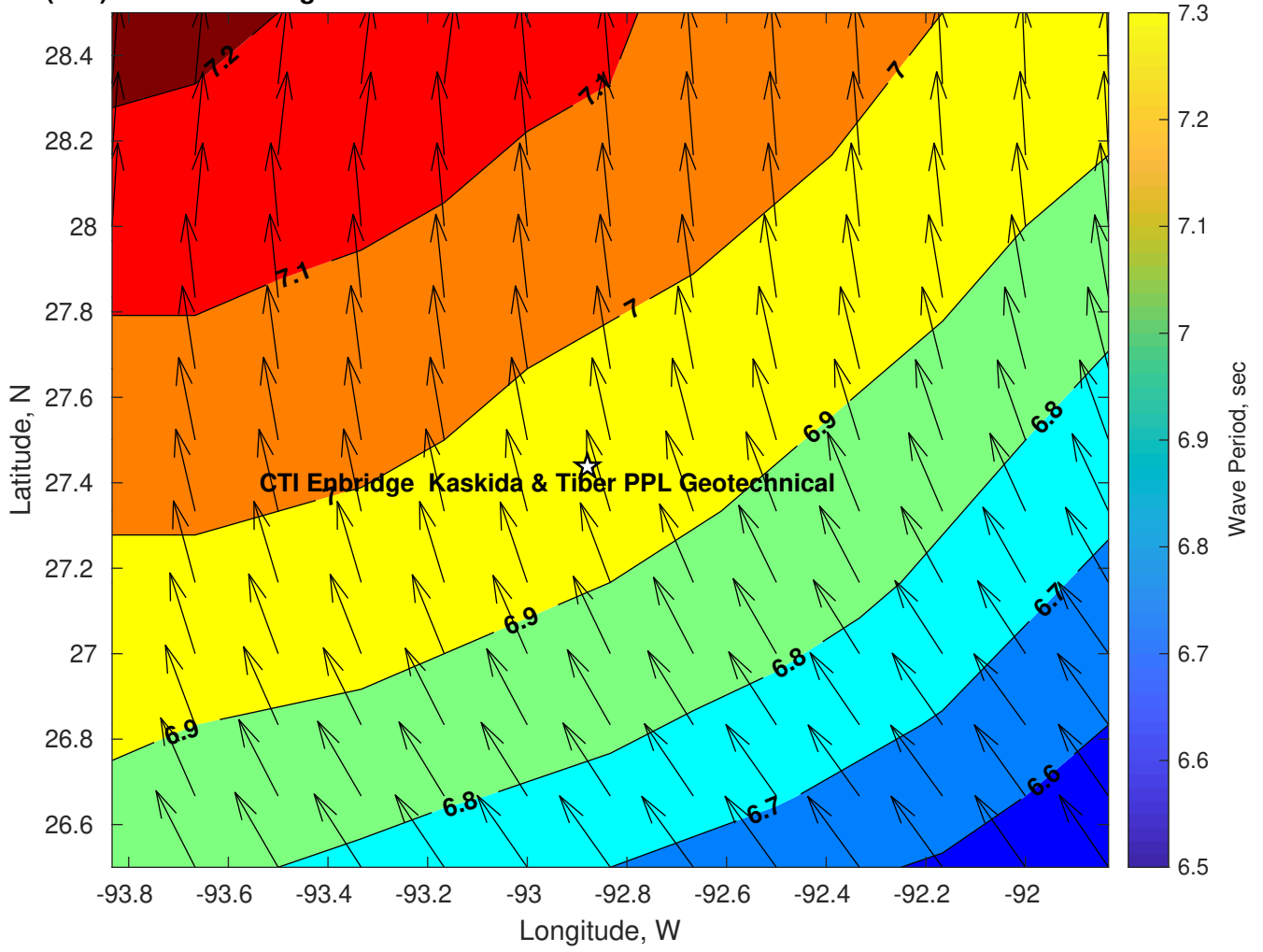
Met Forecast for CTI Enbridge Kaskida & Tiber PPL Geotechnical from 19-Mar-2025 12:00:00 to 26-Mar-2025 12:00:00



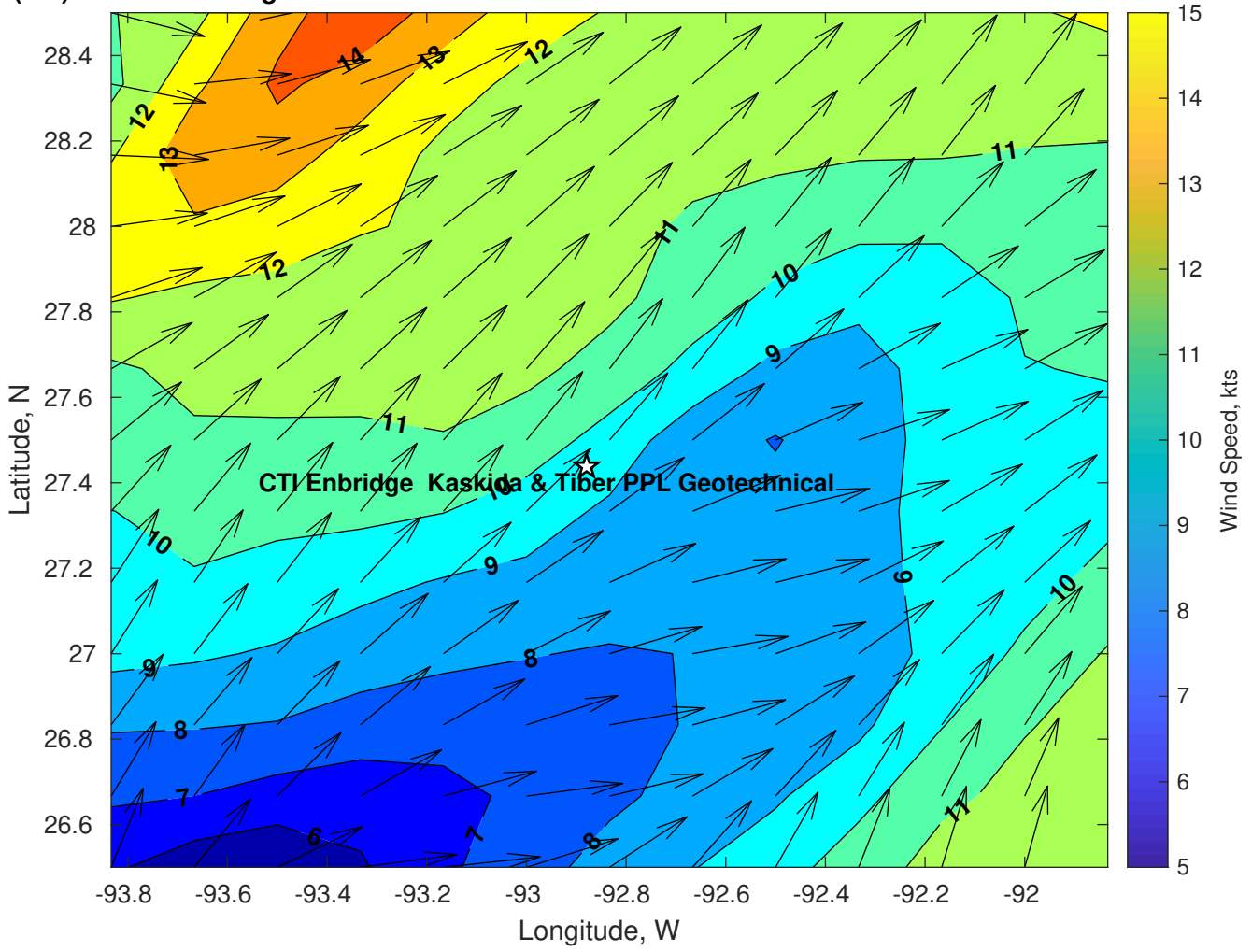
Wave Height (ft) for CTI Enbridge Kaskida & Tiber PPL Geotechnical at 19-Mar-2025 21:00:00



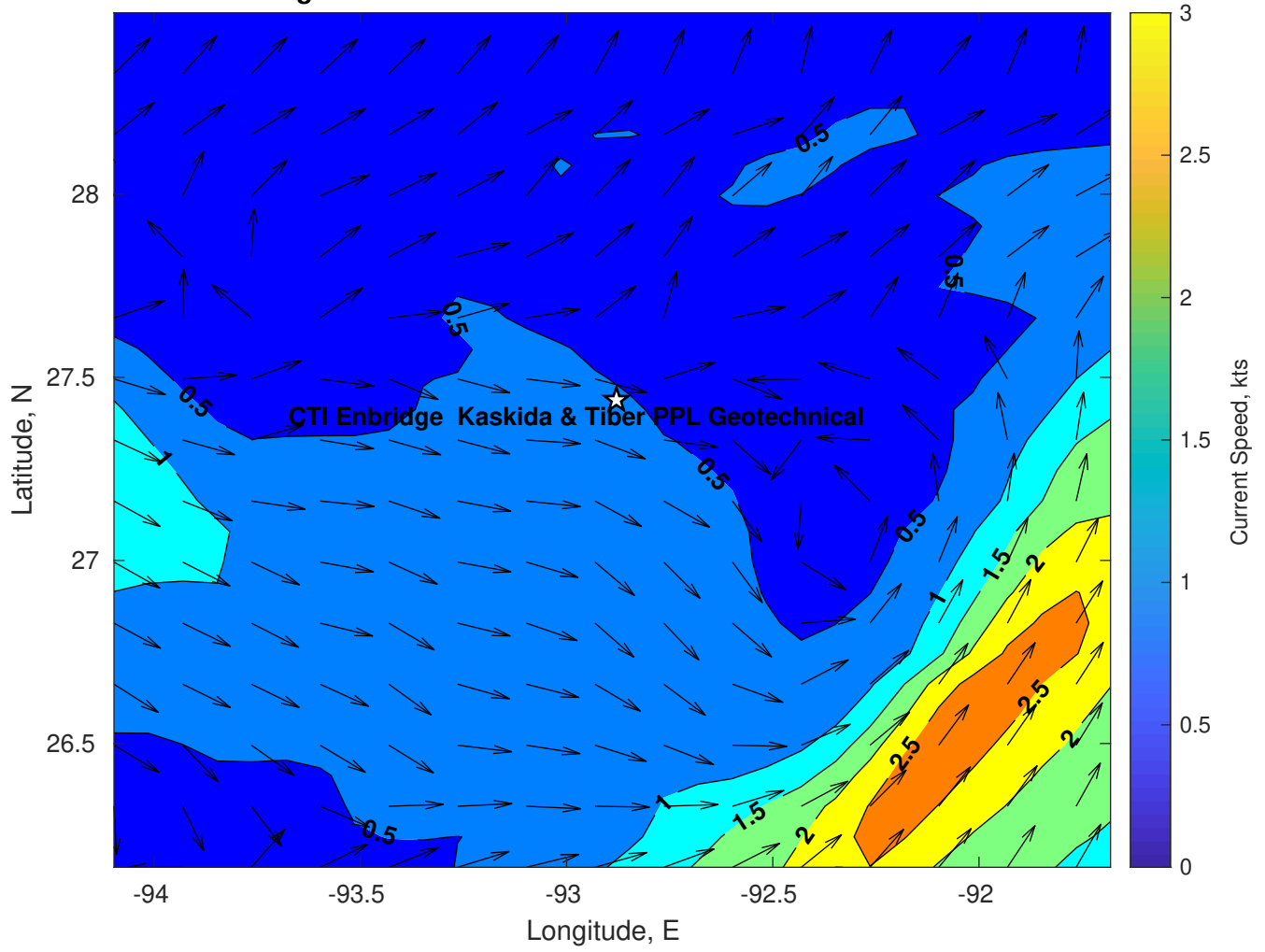
Wave Period (sec) for CTI Enbridge Kaskida & Tiber PPL Geotechnical at 19-Mar-2025 21:00:00



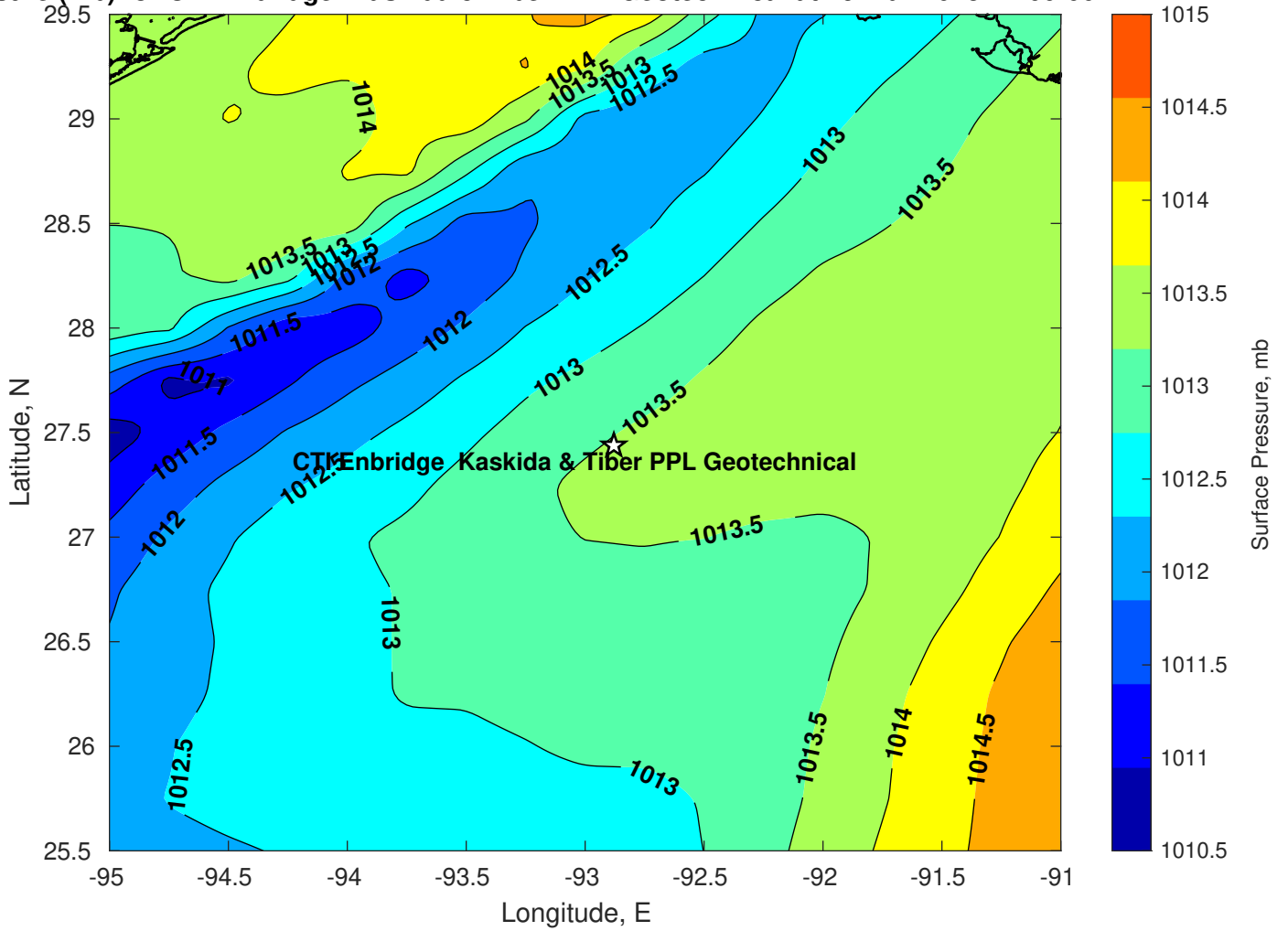
Winds (kts) for CTI Enbridge Kaskida & Tiber PPL Geotechnical at 19-Mar-2025 21:00:00



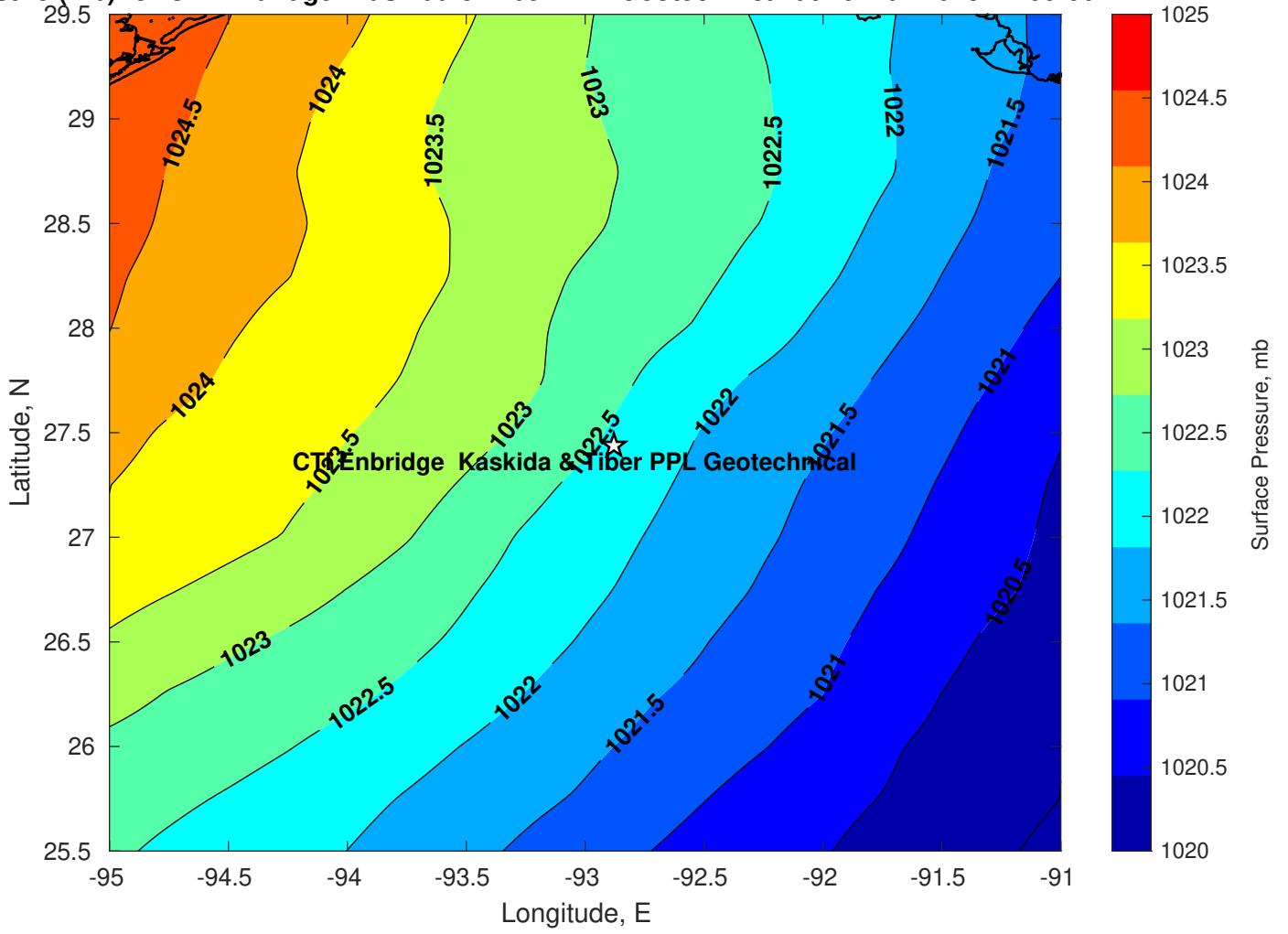
Surface Currents for CTI Enbridge Kaskida & Tiber PPL Geotechnical at 19-Mar-2025 00:00:00



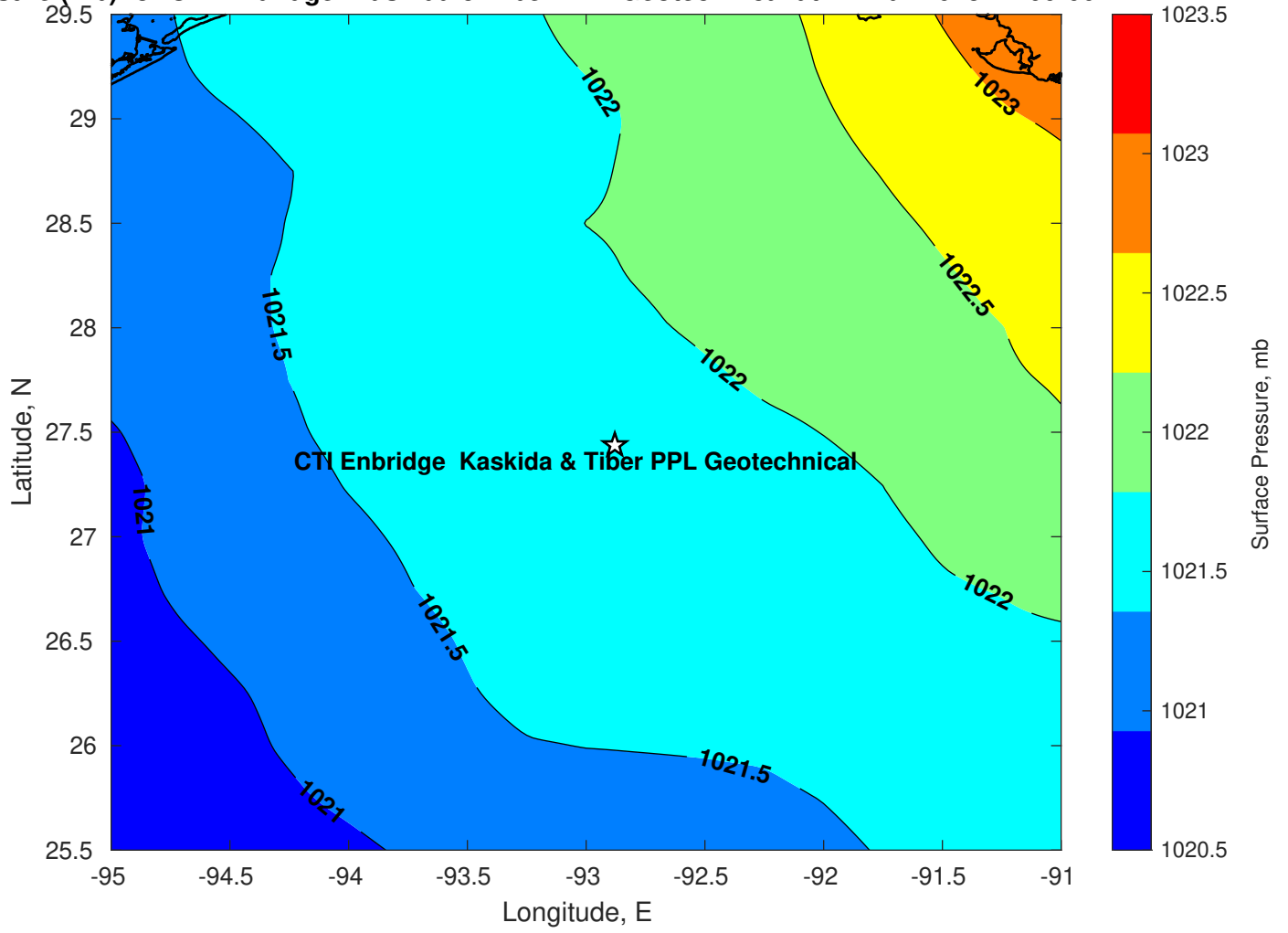
Surface Pressure (mb) for CTI Enbridge Kaskida & Tiber PPL Geotechnical at 19-Mar-2025 12:00:00



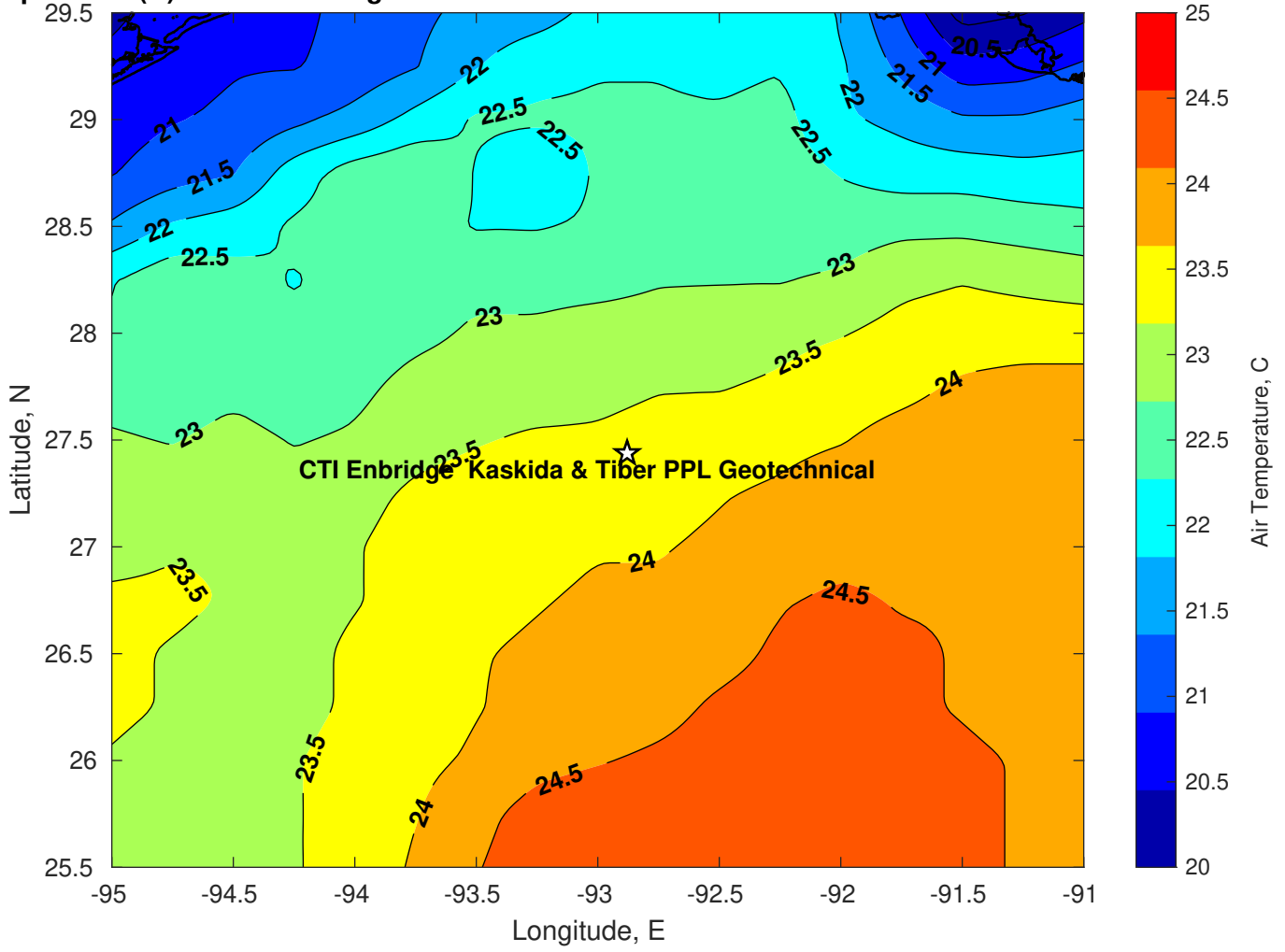
Surface Pressure (mb) for CTI Enbridge Kaskida & Tiber PPL Geotechnical at 20-Mar-2025 12:00:00



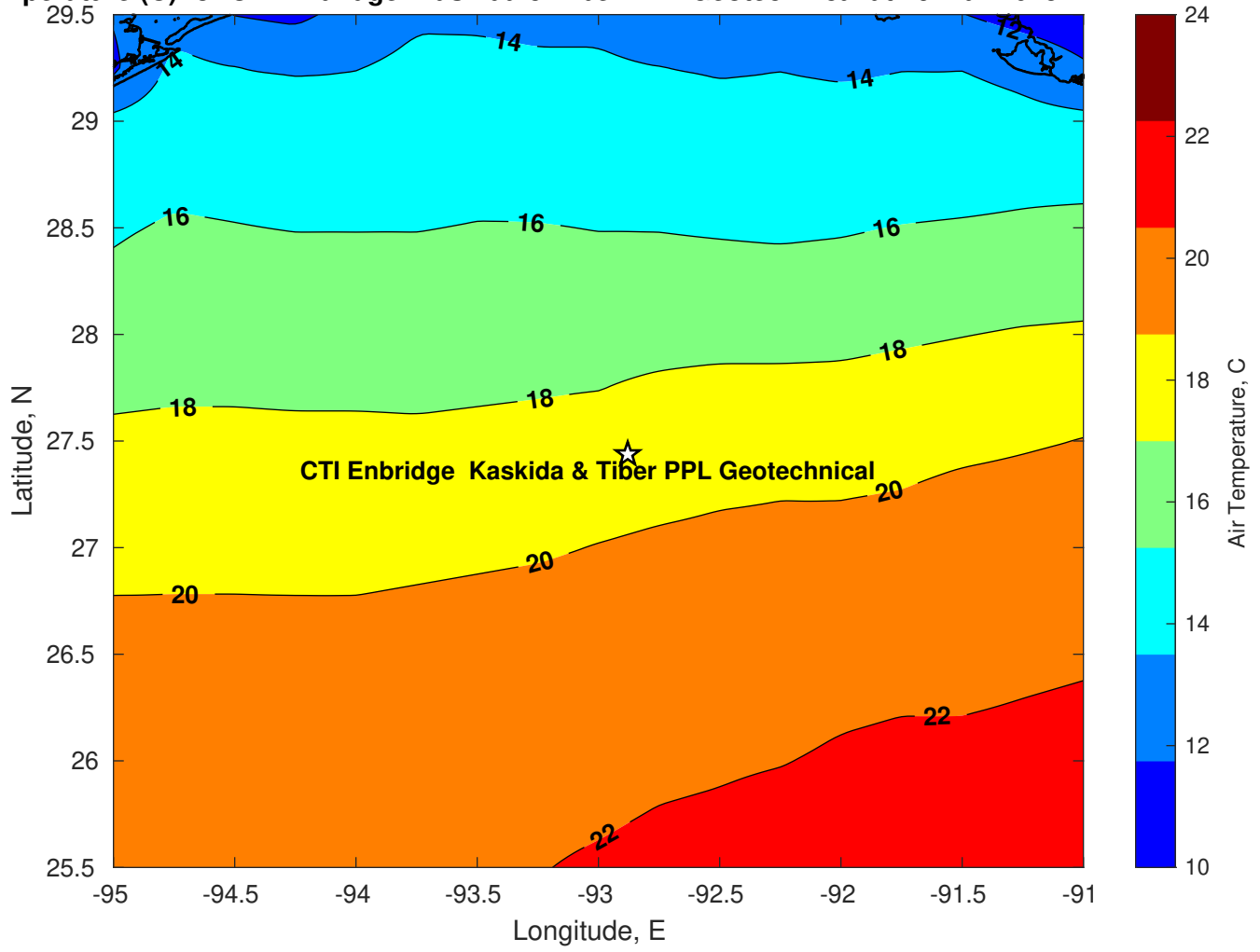
Surface Pressure (mb) for CTI Enbridge Kaskida & Tiber PPL Geotechnical at 21-Mar-2025 12:00:00



Air Temperature (C) for CTI Enbridge Kaskida & Tiber PPL Geotechnical at 19-Mar-2025



Air Temperature (C) for CTI Enbridge Kaskida & Tiber PPL Geotechnical at 19-Mar-2025



Air Temperature (C) for CTI Enbridge Kaskida & Tiber PPL Geotechnical at 19-Mar-2025

