
Marine Weather Forecast for Proteus
Forecast valid as of 19-Mar-2025 2000 GMT

All times are local.

Today

Winds: NW, 5-10 kts.
Waves: NW, 3-4 feet, 14-15 sec.
Currents: E, 0.5-1 kts.

Tonight

Winds: NW, 5-10 kts.
Waves: NW, 3-4 feet, 13-14 sec.
Currents: E, 0.5-1 kts.

Thursday

Winds: NW, 10-15 kts.
Waves: NW, 3-4 feet, 13-14 sec.
Currents: E, 0.5-1 kts.

Friday Night

Winds: N, 5-10 kts.
Waves: N, 4-5 feet, 12-13 sec.
Currents: SE, 0.5-1 kts.

Friday

Winds: N, 10-15 kts.
Waves: NW, 4-5 feet, 12-13 sec.
Currents: E, less than 0.5 knot.

Saturday Night

Winds: N, 10-15 kts.
Waves: N, 3-4 feet, 11-12 sec.
Currents: E, less than 0.5 knot.

Saturday

Winds: N, 10-15 kts.
Waves: N, 3-4 feet, 11-12 sec.
Currents: E, less than 0.5 knot.

Sunday Night

Winds: N, 10-15 kts.
Waves: N, 3-4 feet, 12-13 sec.
Currents: NE, less than 0.5 knot.

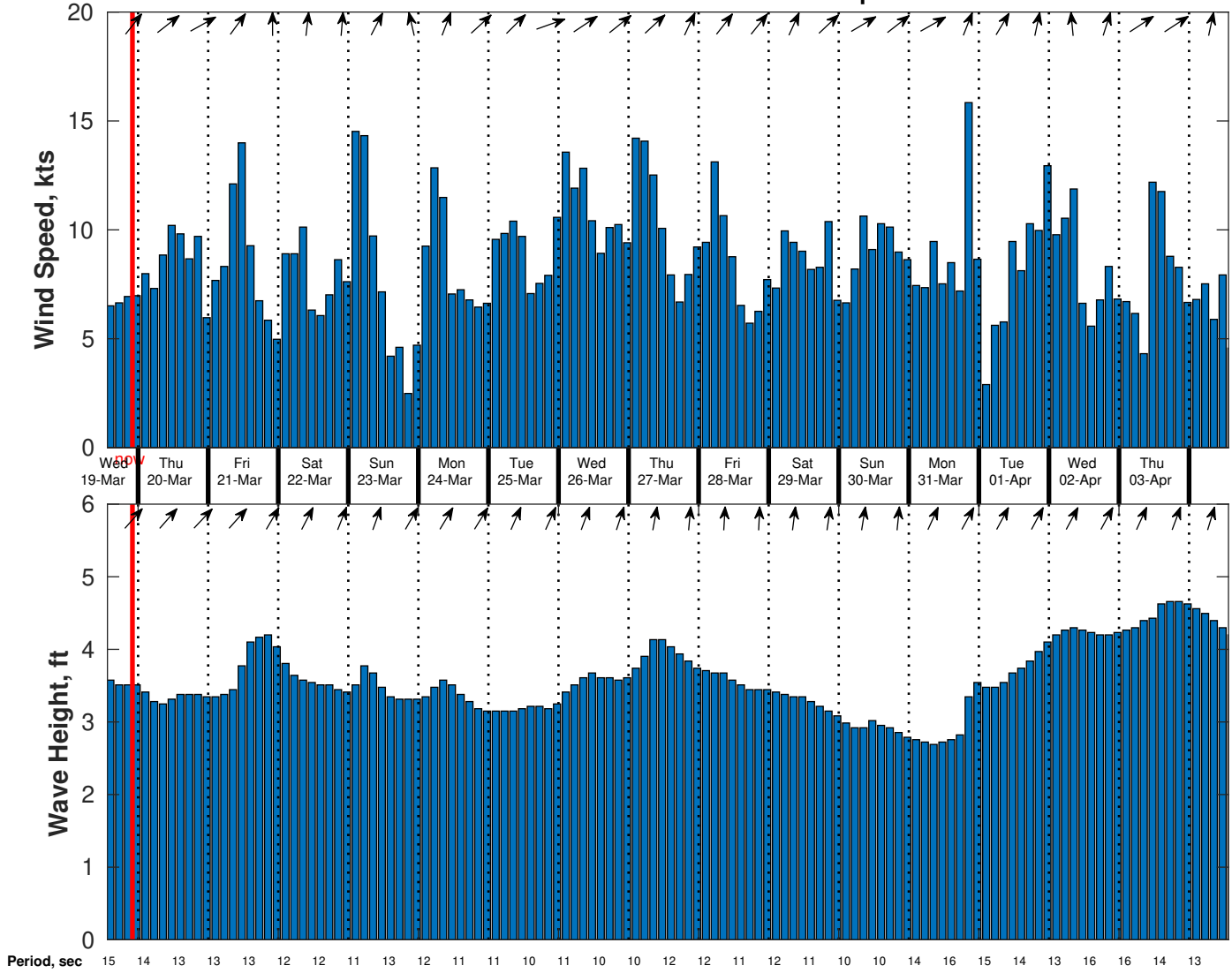
Sunday

Winds: NE, 5-10 kts.
Waves: N, 3-4 feet, 12-13 sec.
Currents: NE, less than 0.5 knot.

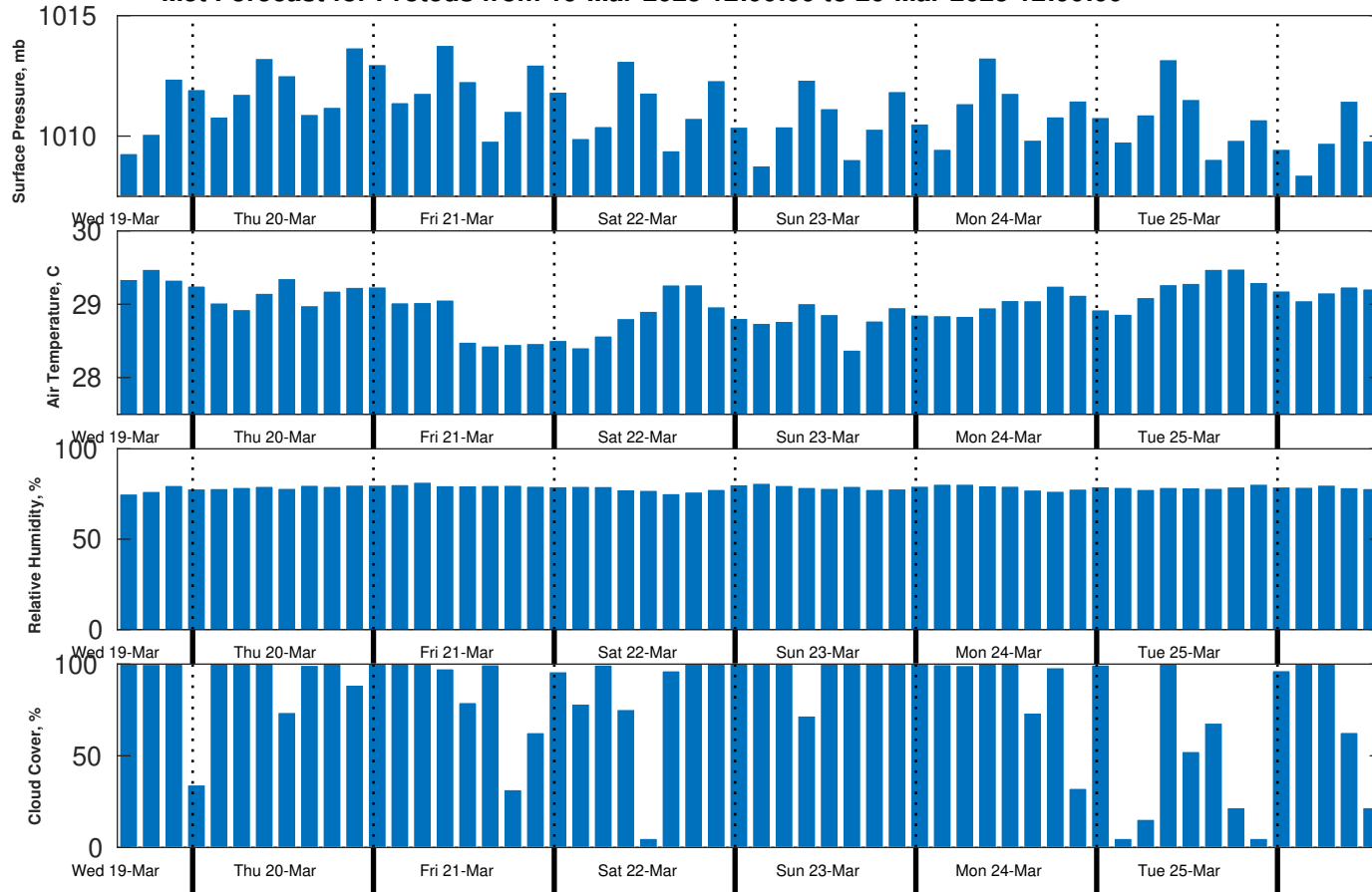
Monday Night

Winds: NW, 5-10 kts.
Waves: N, 3-4 feet, 11-12 sec.
Currents: NE, less than 0.5 knot.

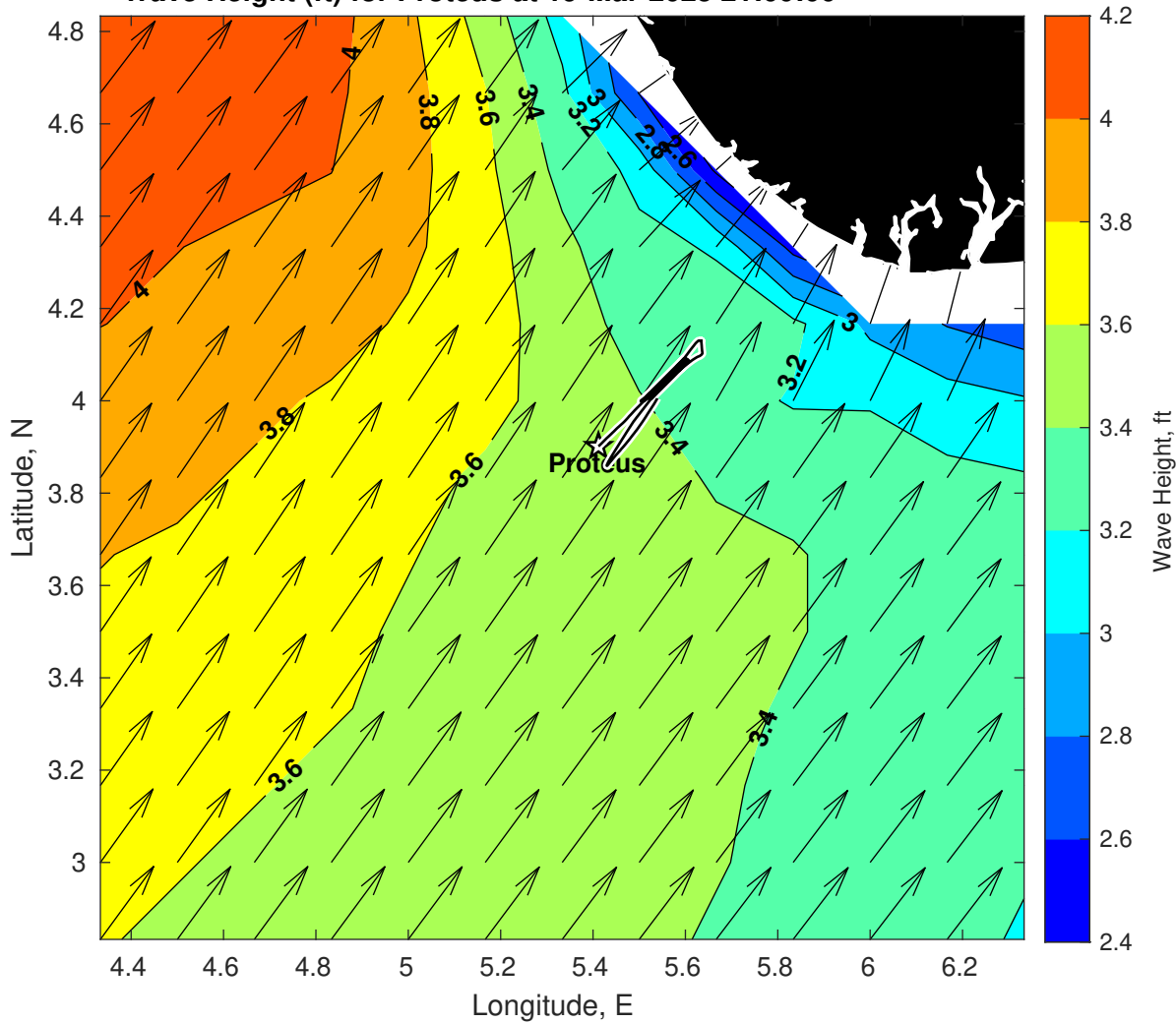
Wind & Wave Forecast for Proteus from 19-Mar-2025 13:00:00 to 04-Apr-2025 13:00:00



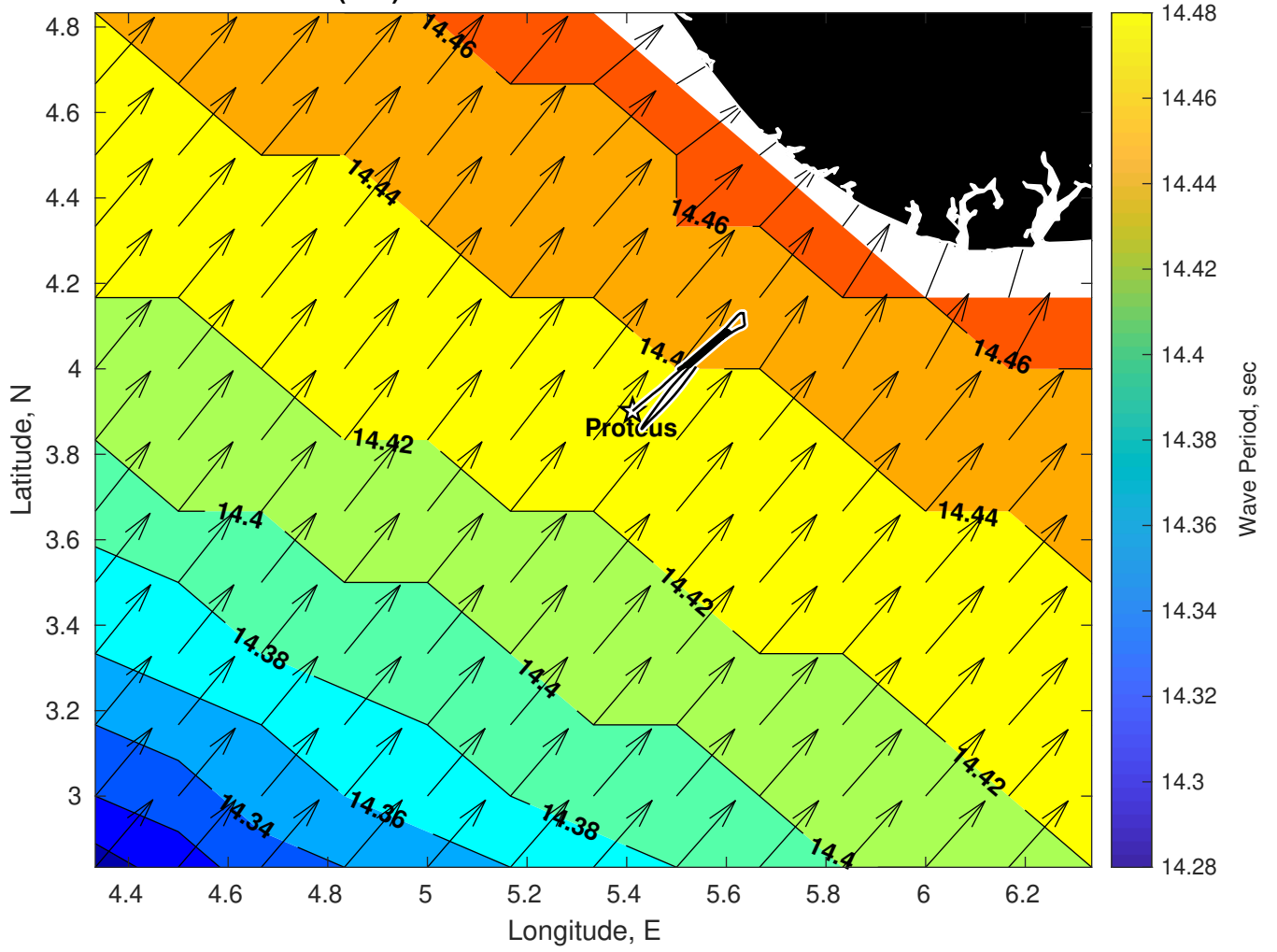
Met Forecast for Proteus from 19-Mar-2025 12:00:00 to 26-Mar-2025 12:00:00



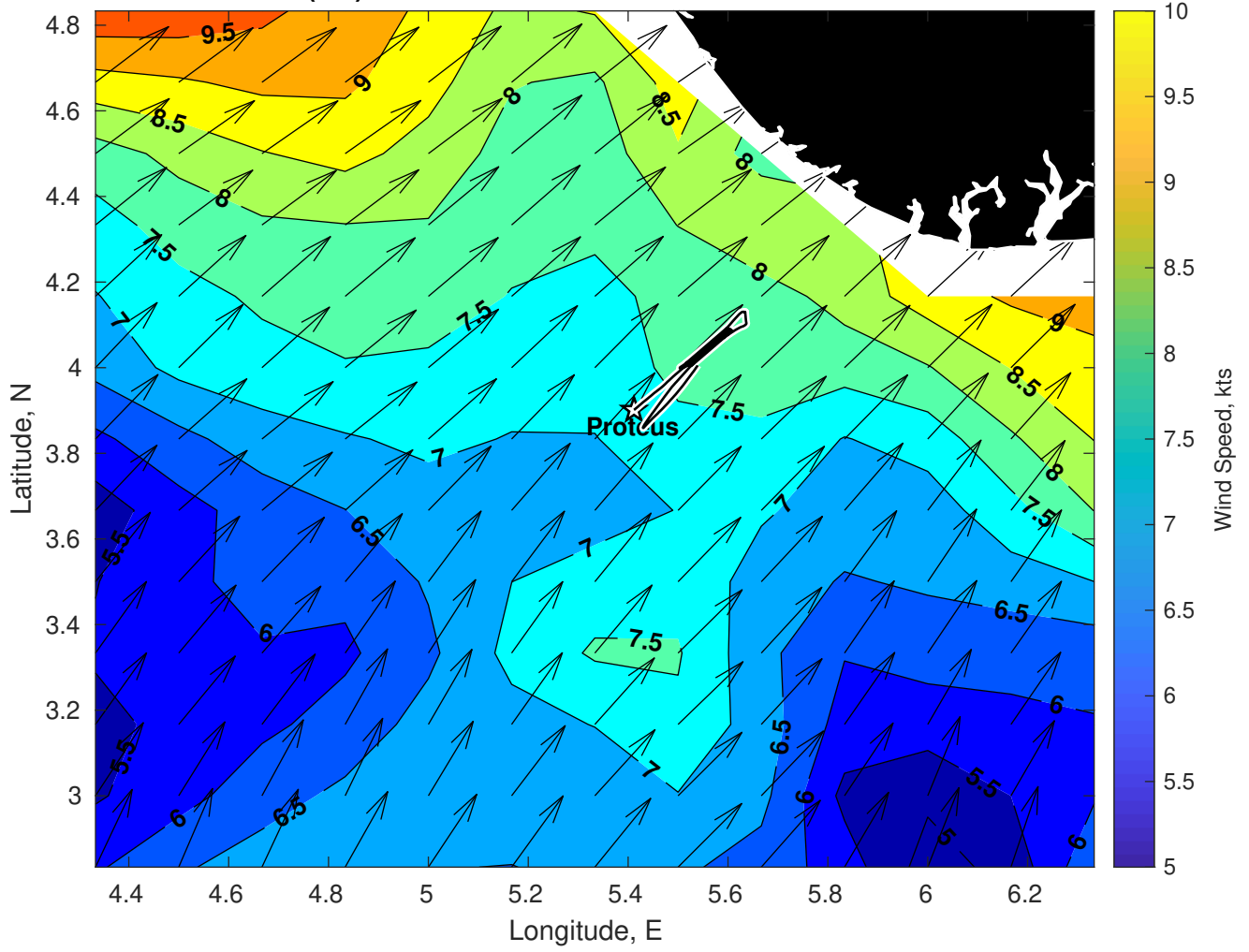
Wave Height (ft) for Proteus at 19-Mar-2025 21:00:00



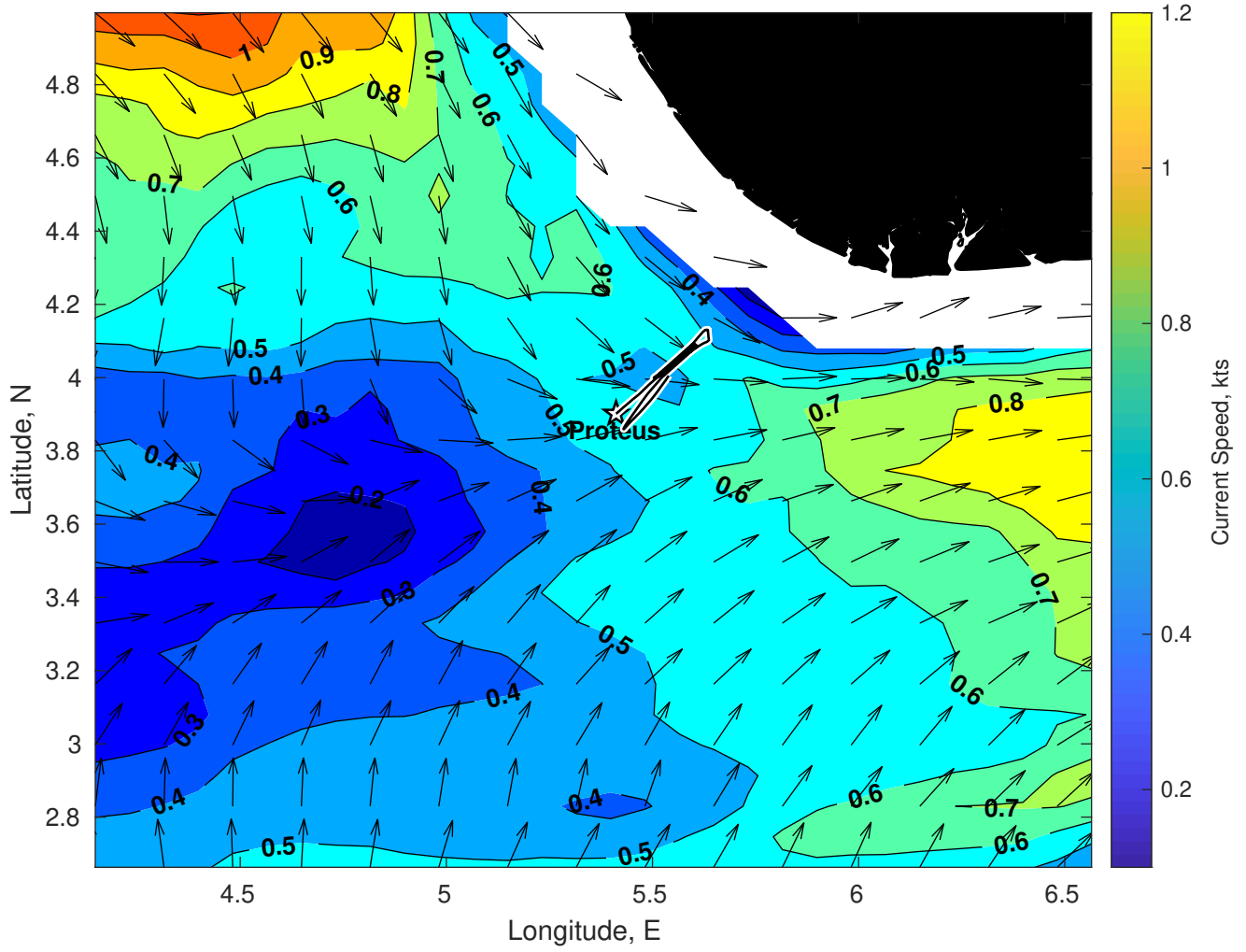
Wave Period (sec) for Proteus at 19-Mar-2025 21:00:00



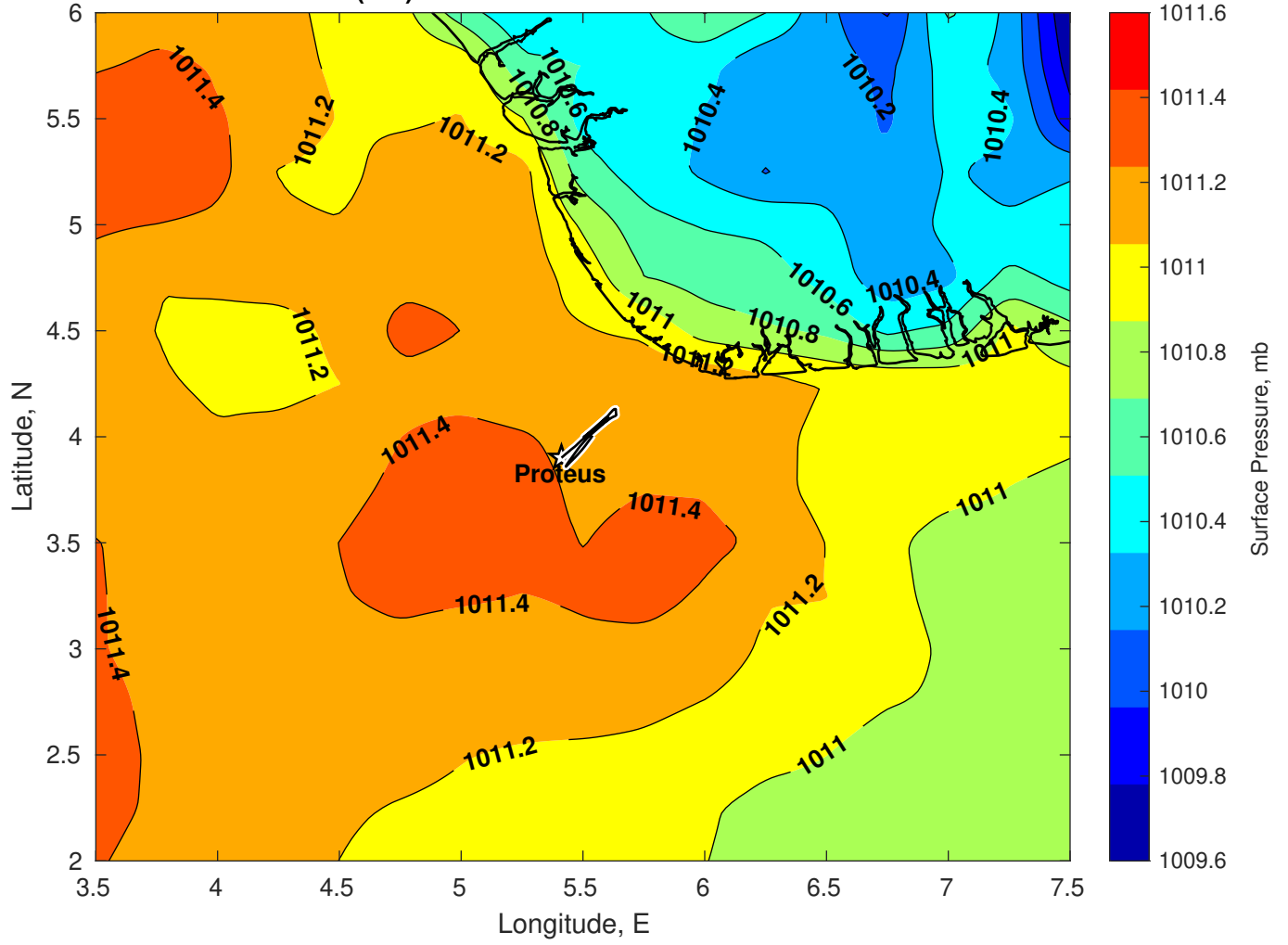
Winds (kts) for Proteus at 19-Mar-2025 21:00:00



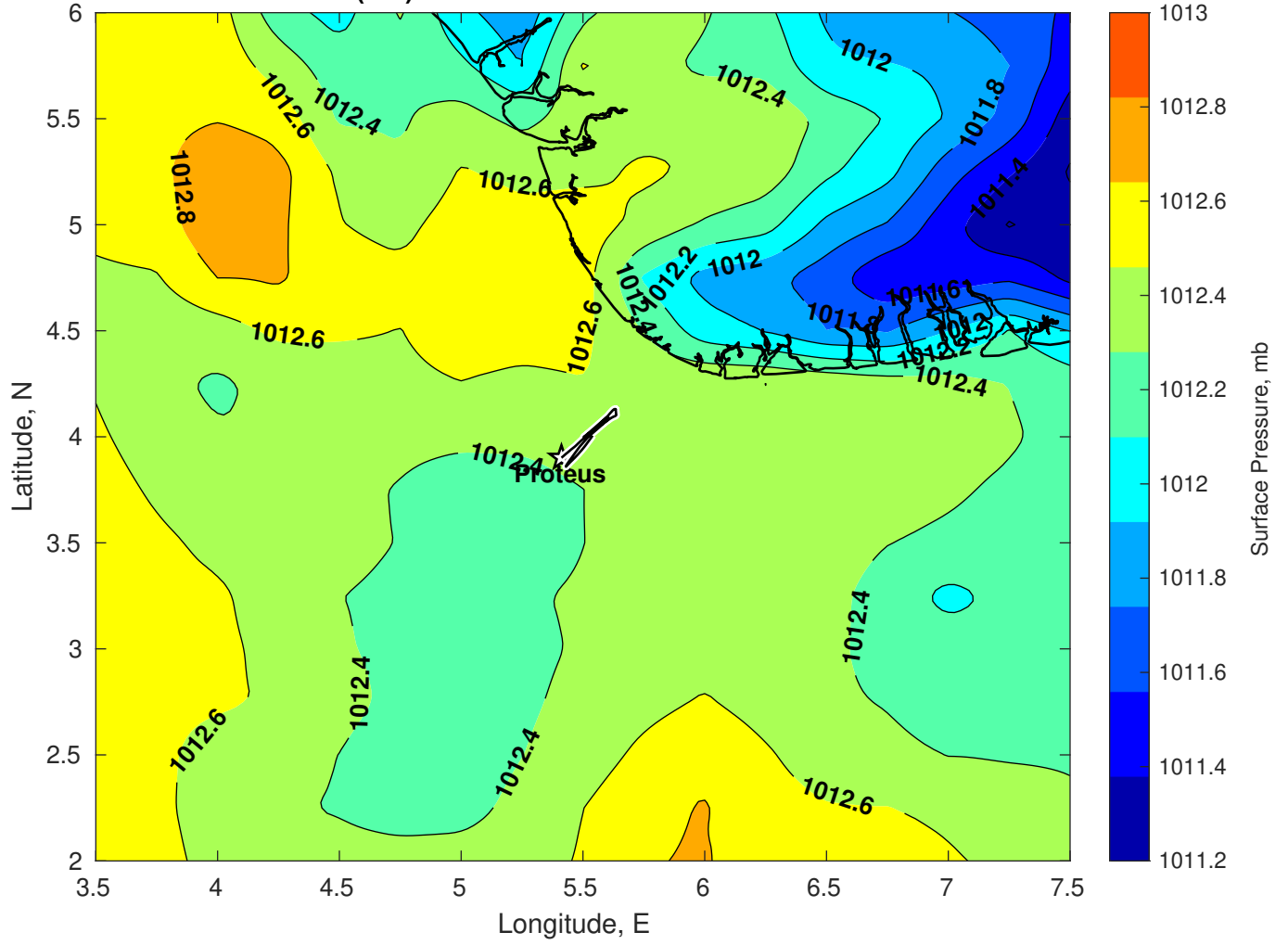
Surface Currents for Proteus at 19-Mar-2025 00:00:00



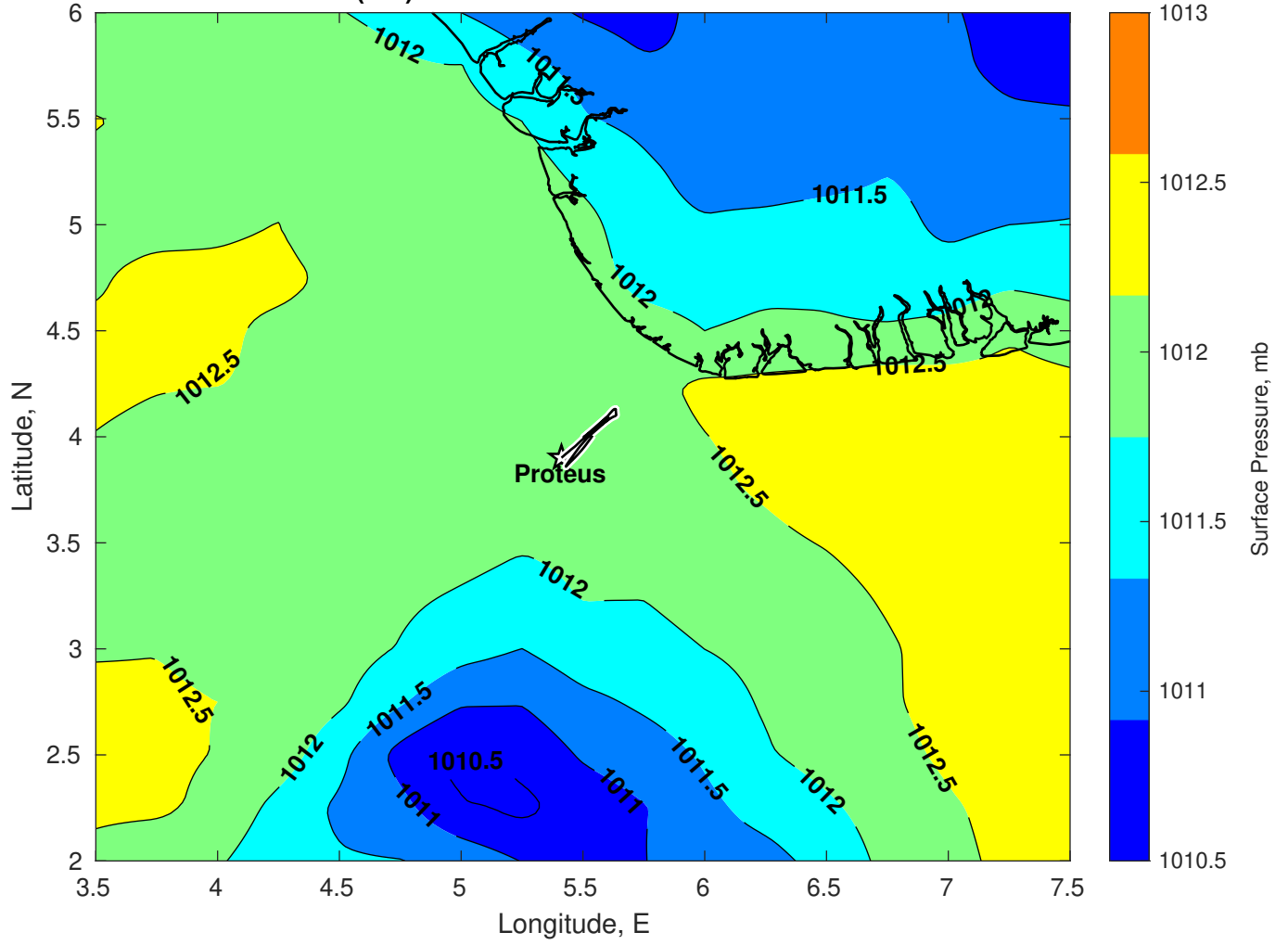
Surface Pressure (mb) for Proteus at 19-Mar-2025 12:00:00



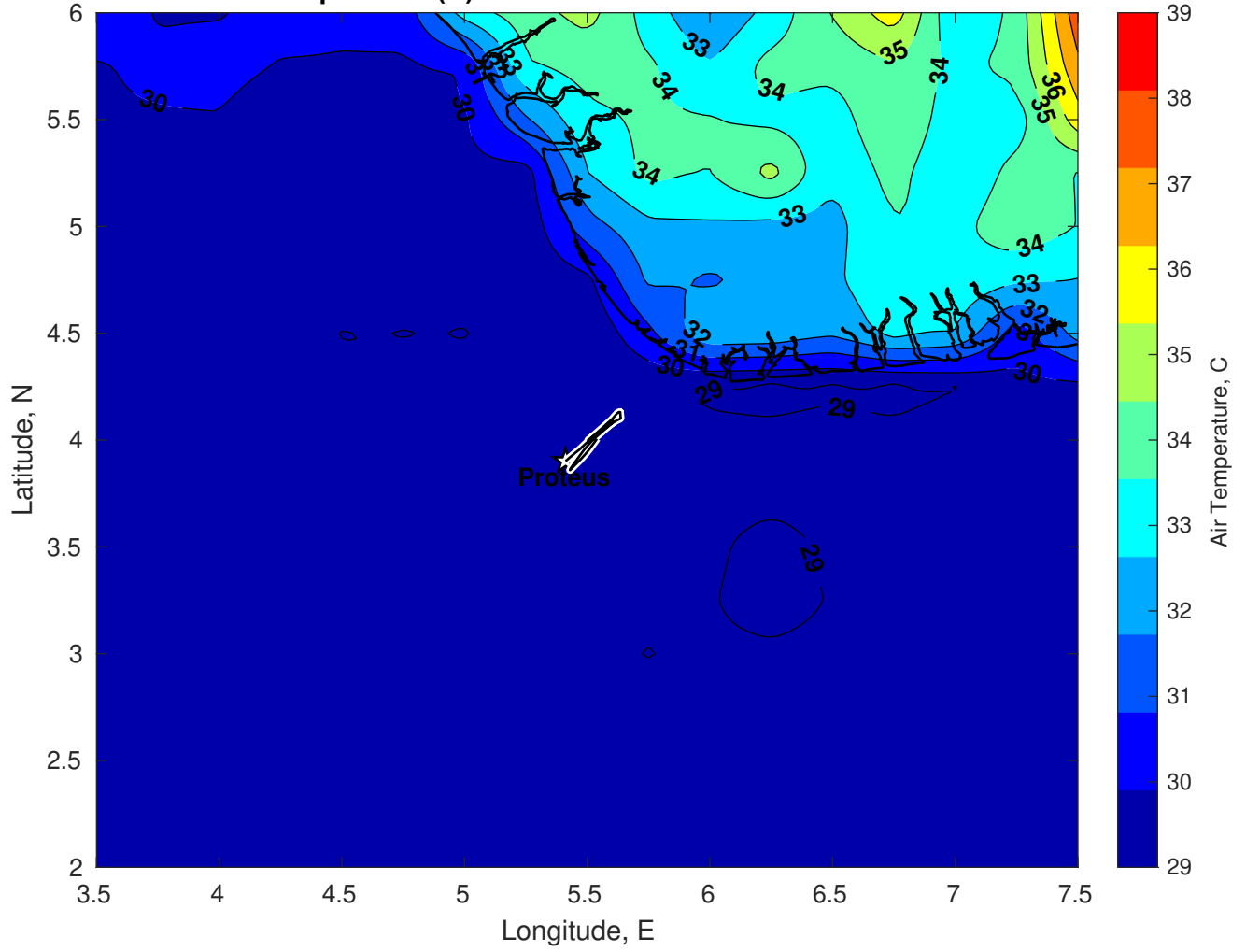
Surface Pressure (mb) for Proteus at 20-Mar-2025 12:00:00



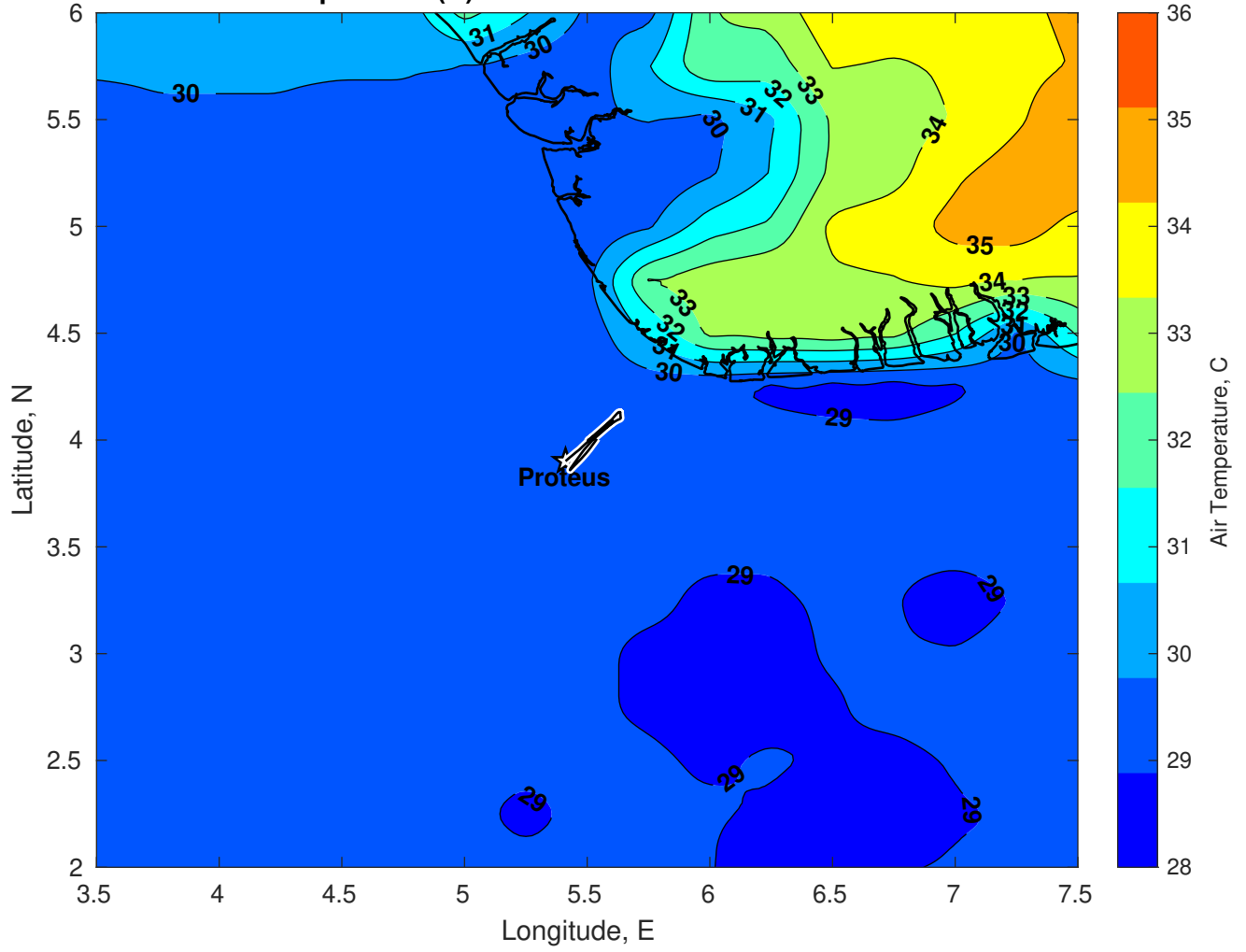
Surface Pressure (mb) for Proteus at 21-Mar-2025 12:00:00



Air Temperature (C) for Proteus at 19-Mar-2025



Air Temperature (C) for Proteus at 19-Mar-2025



Air Temperature (C) for Proteus at 19-Mar-2025

