
Marine Weather Forecast for CSA (ONHYM) PPL EBS - Senegal

Forecast valid as of 22-Mar-2025 0800 GMT

All times are local.

Today

Winds: N, 15-20 kts.

Waves: N, 7-8 feet, 12-13 sec.

No currents available.

Tonight

Winds: N, 20-25 kts.

Waves: N, 7-8 feet, 12-13 sec.

No currents available.

Sunday

Winds: N, 15-20 kts.

Waves: N, 7-8 feet, 11-12 sec.

No currents available.

Sunday Night

Winds: N, 20-25 kts.

Waves: N, 7-8 feet, 9-10 sec.

No currents available.

Monday

Winds: N, 15-20 kts.

Waves: N, 6-7 feet, 9-10 sec.

No currents available.

Monday Night

Winds: N, 15-20 kts.

Waves: N, 6-7 feet, 9-10 sec.

No currents available.

Tuesday

Winds: N, 15-20 kts.

Waves: N, 6-7 feet, 9-10 sec.

No currents available.

Tuesday Night

Winds: N, 15-20 kts.

Waves: N, 6-7 feet, 8-9 sec.

No currents available.

Wednesday

Winds: N, 15-20 kts.

Waves: N, 6-7 feet, 8-9 sec.

No currents available.

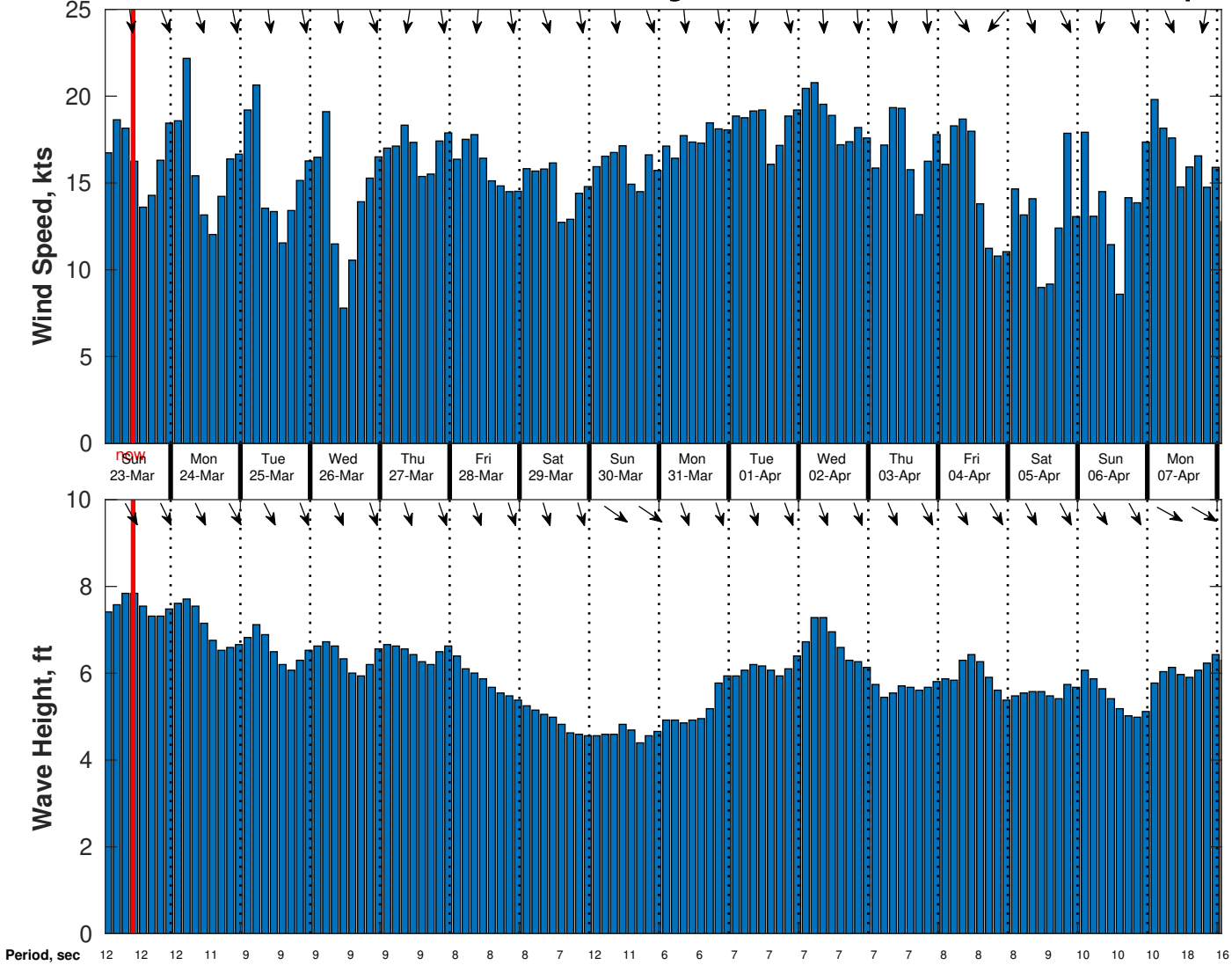
Wednesday Night

Winds: N, 15-20 kts.

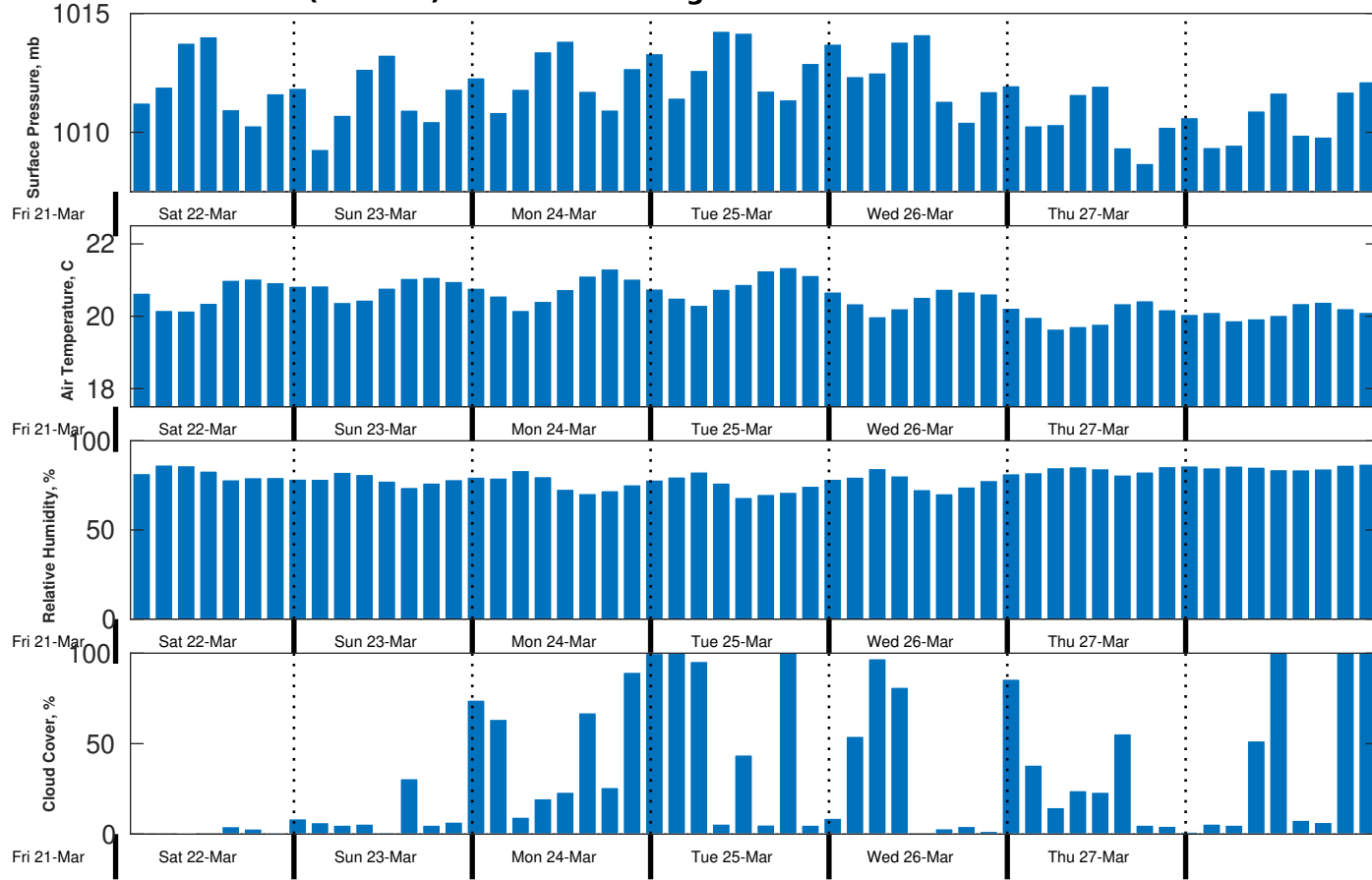
Waves: N, 6-7 feet, 8-9 sec.

No currents available.

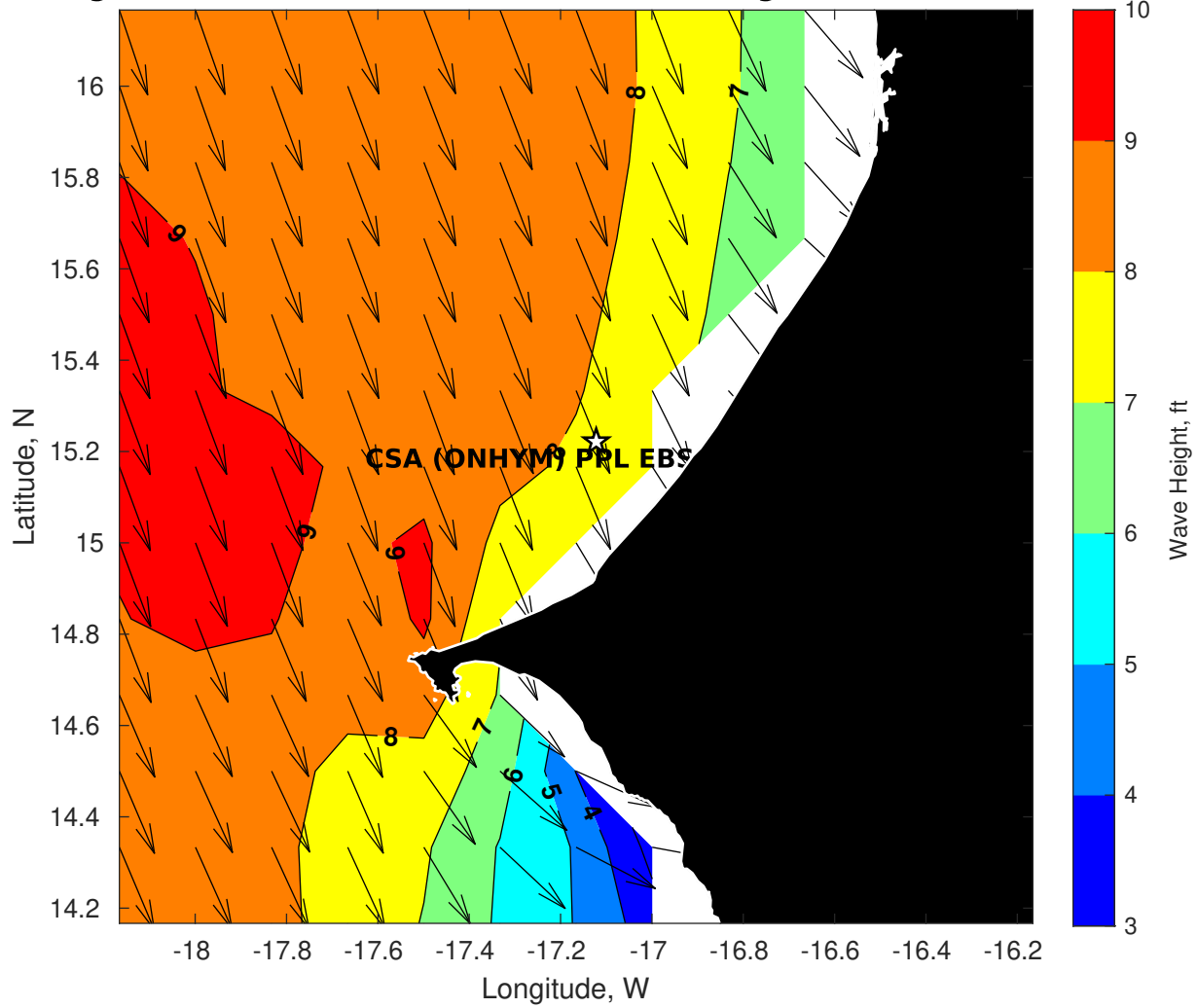
Wind & Wave Forecast for CSA (ONHYM) PPL EBS - Senegal from 22-Mar-2025 01:00:00 to 07-Apr-2025 01:00:00



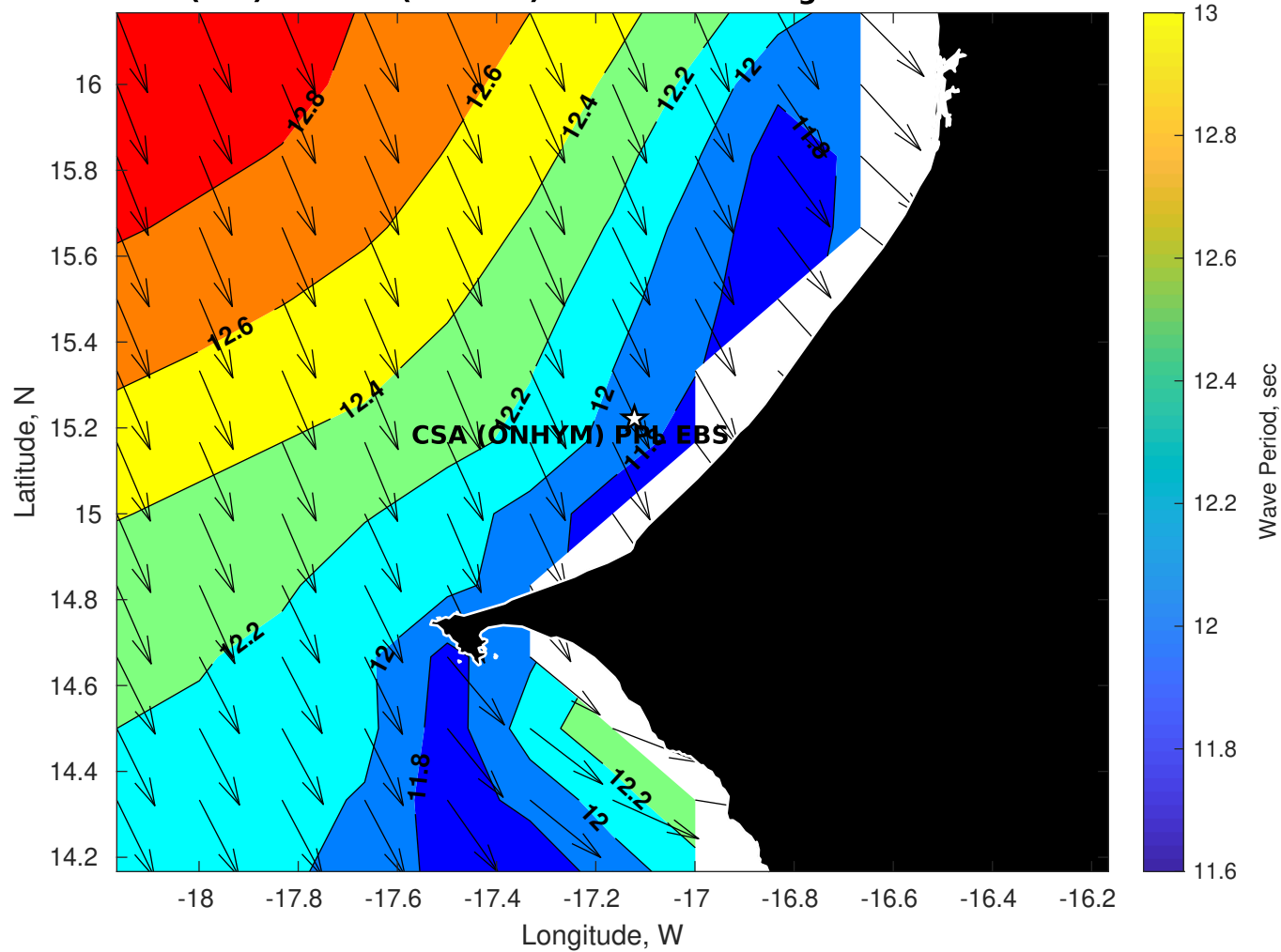
Met Forecast for CSA (ONHYM) PPL EBS - Senegal from 22-Mar-2025 00:00:00 to 29-Mar-2025 00:00:00



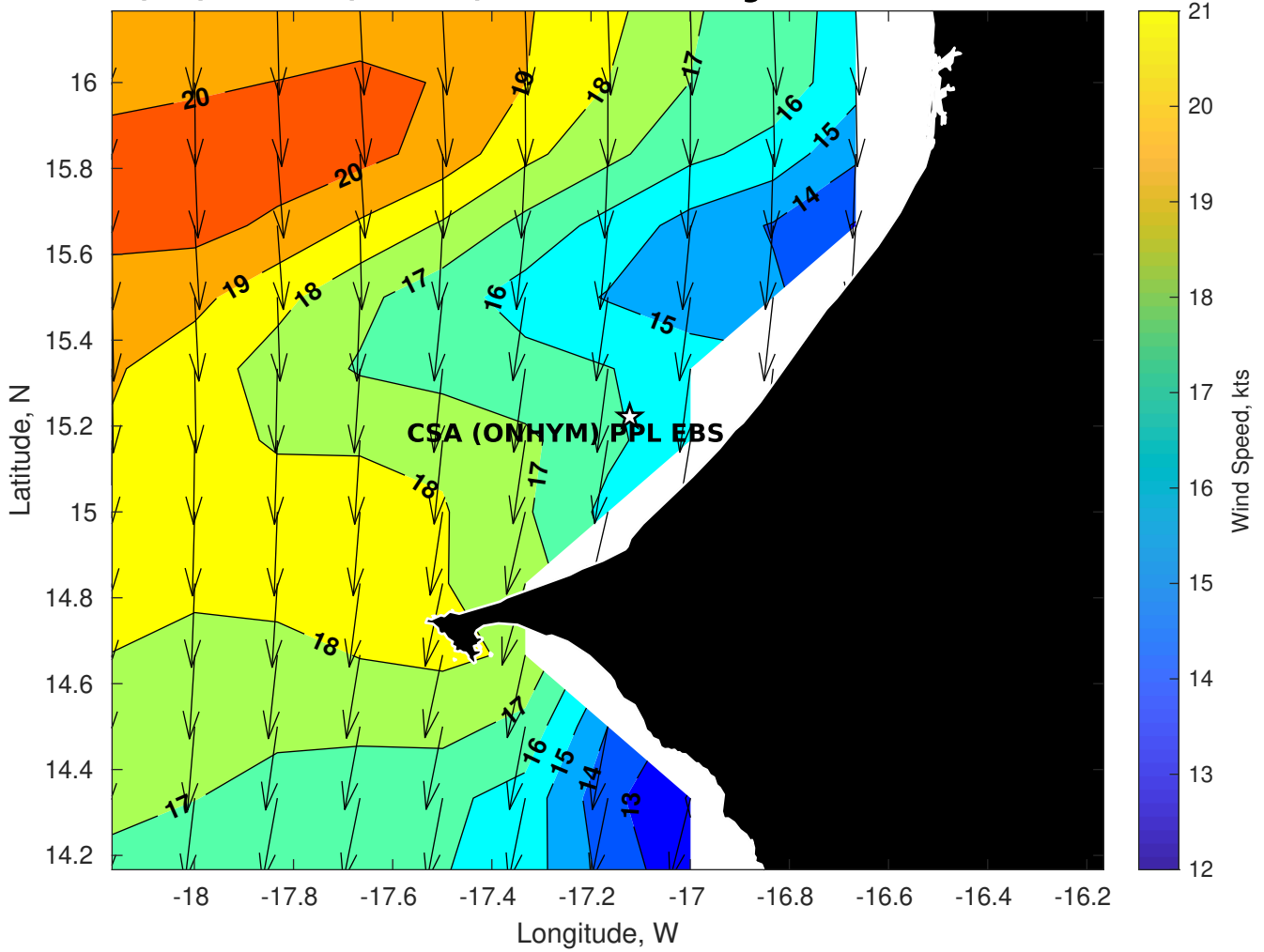
Wave Height (ft) for CSA (ONHYM) PPL EBS - Senegal at 22-Mar-2025 09:00:00



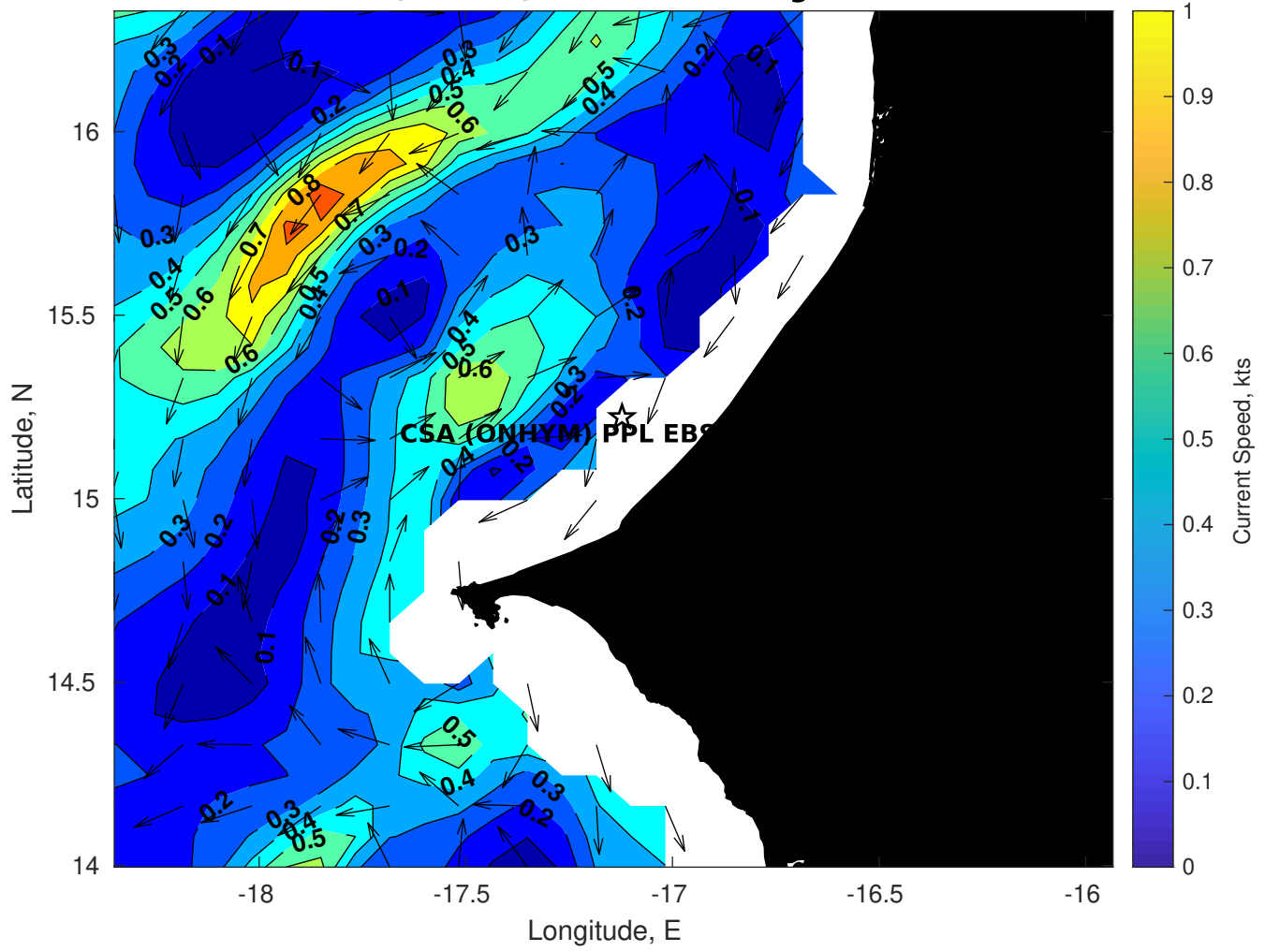
Wave Period (sec) for CSA (ONHYM) PPL EBS - Senegal at 22-Mar-2025 09:00:00



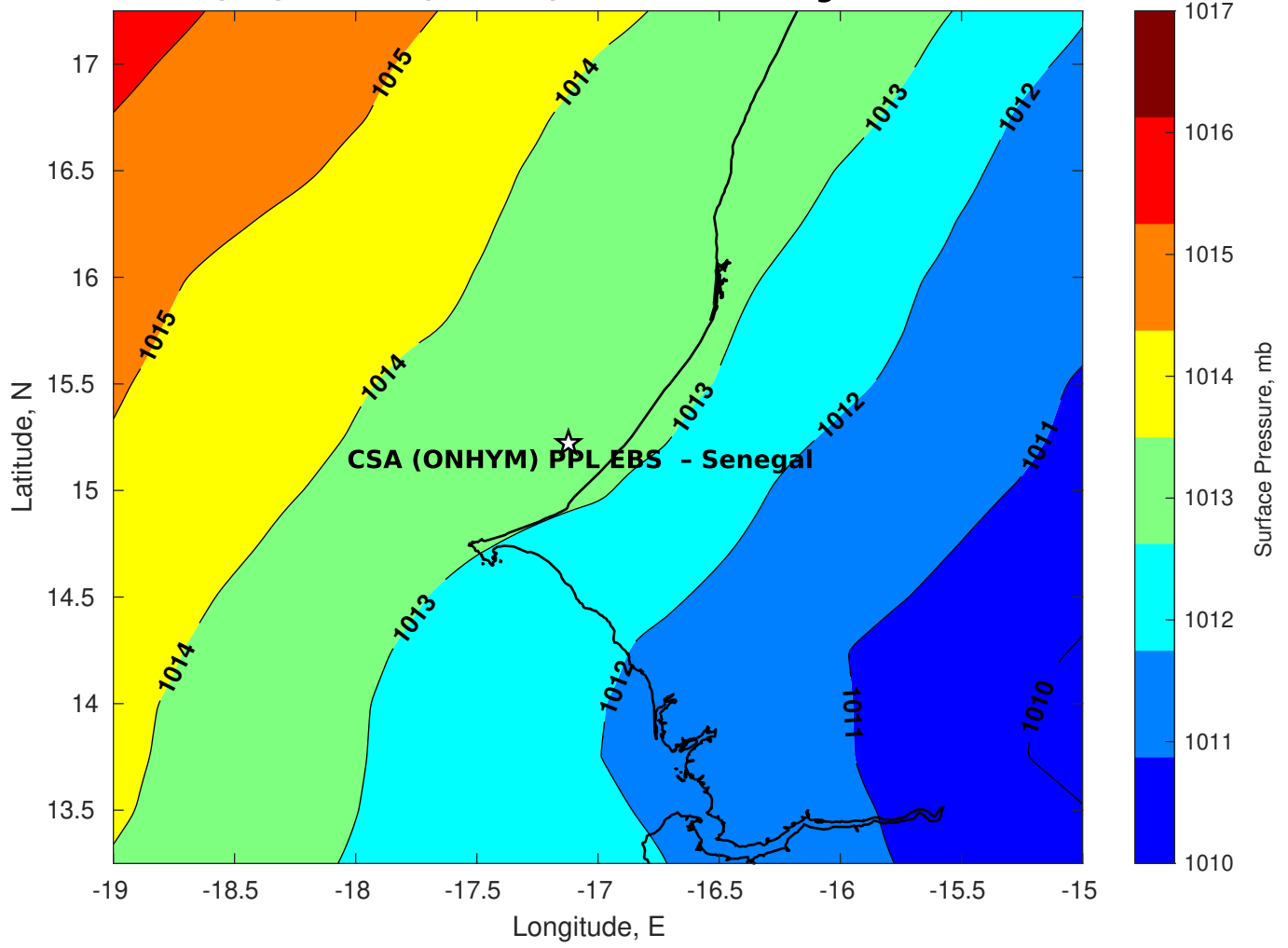
Winds (kts) for CSA (ONHYM) PPL EBS - Senegal at 22-Mar-2025 09:00:00



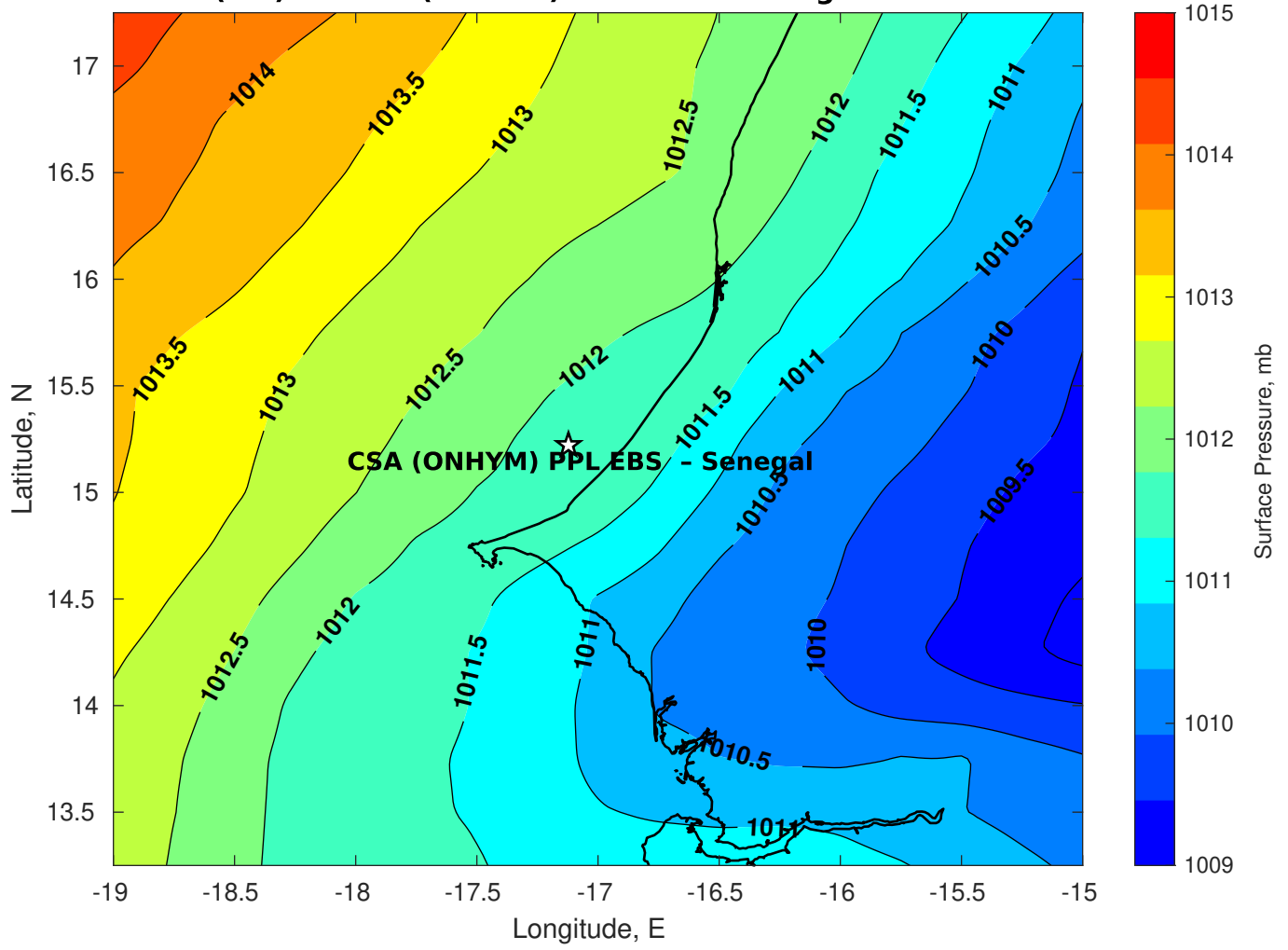
Surface Currents for CSA (ONHYM) PPL EBS - Senegal at 21-Mar-2025 00:00:00



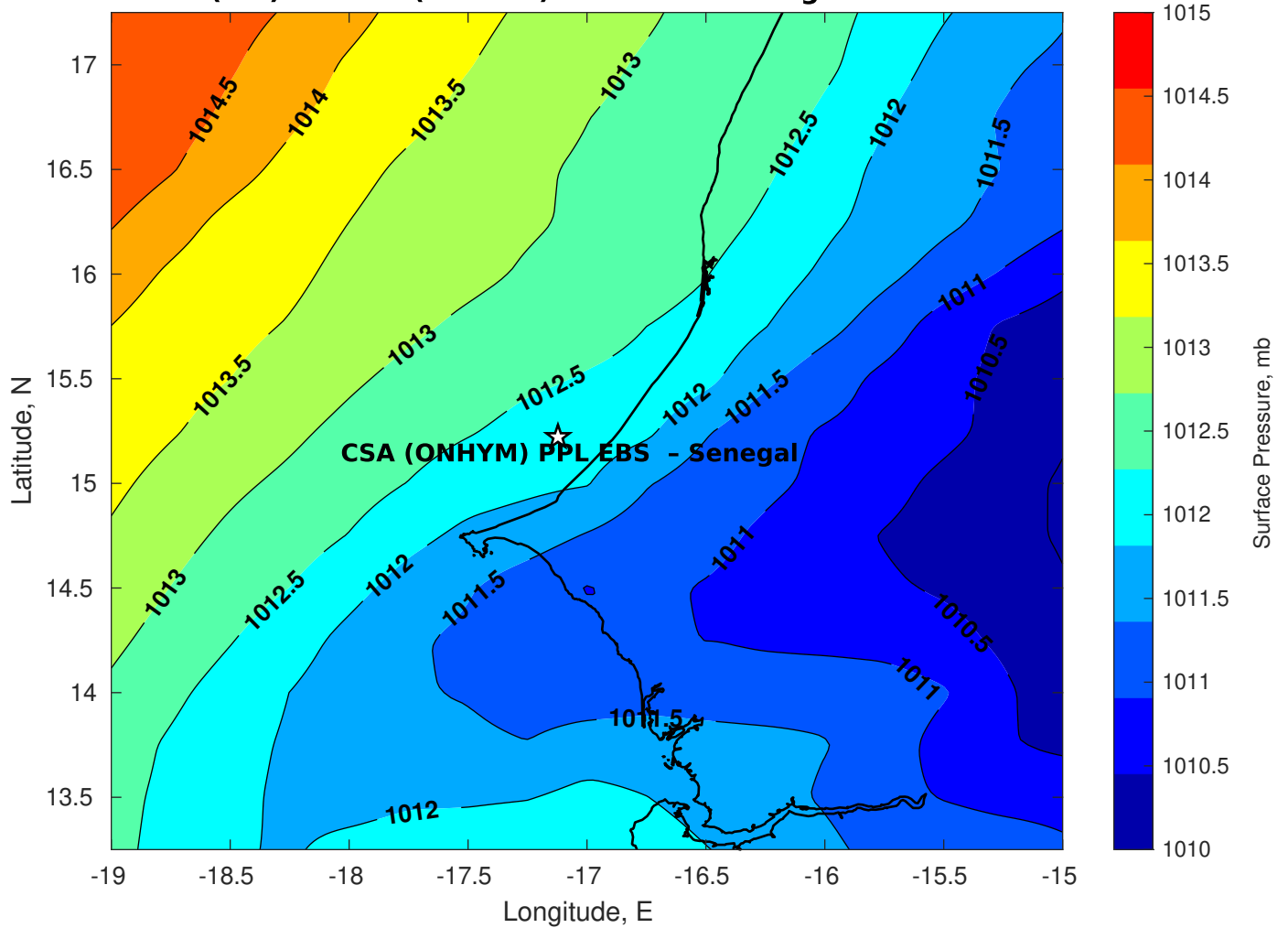
Surface Pressure (mb) for CSA (ONHYM) PPL EBS - Senegal at 22-Mar-2025 00:00:00



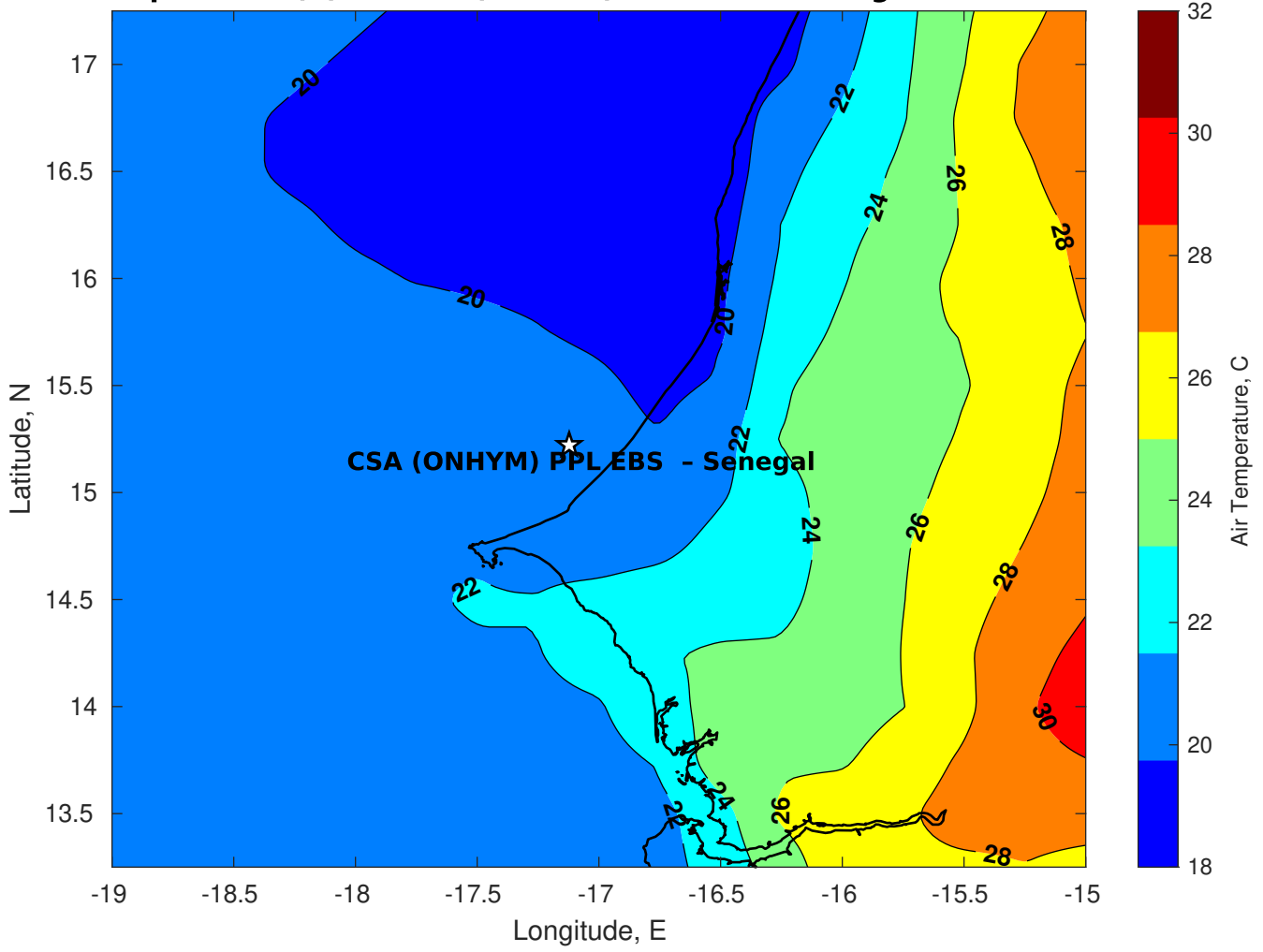
Surface Pressure (mb) for CSA (ONHYM) PPL EBS - Senegal at 23-Mar-2025 00:00:00



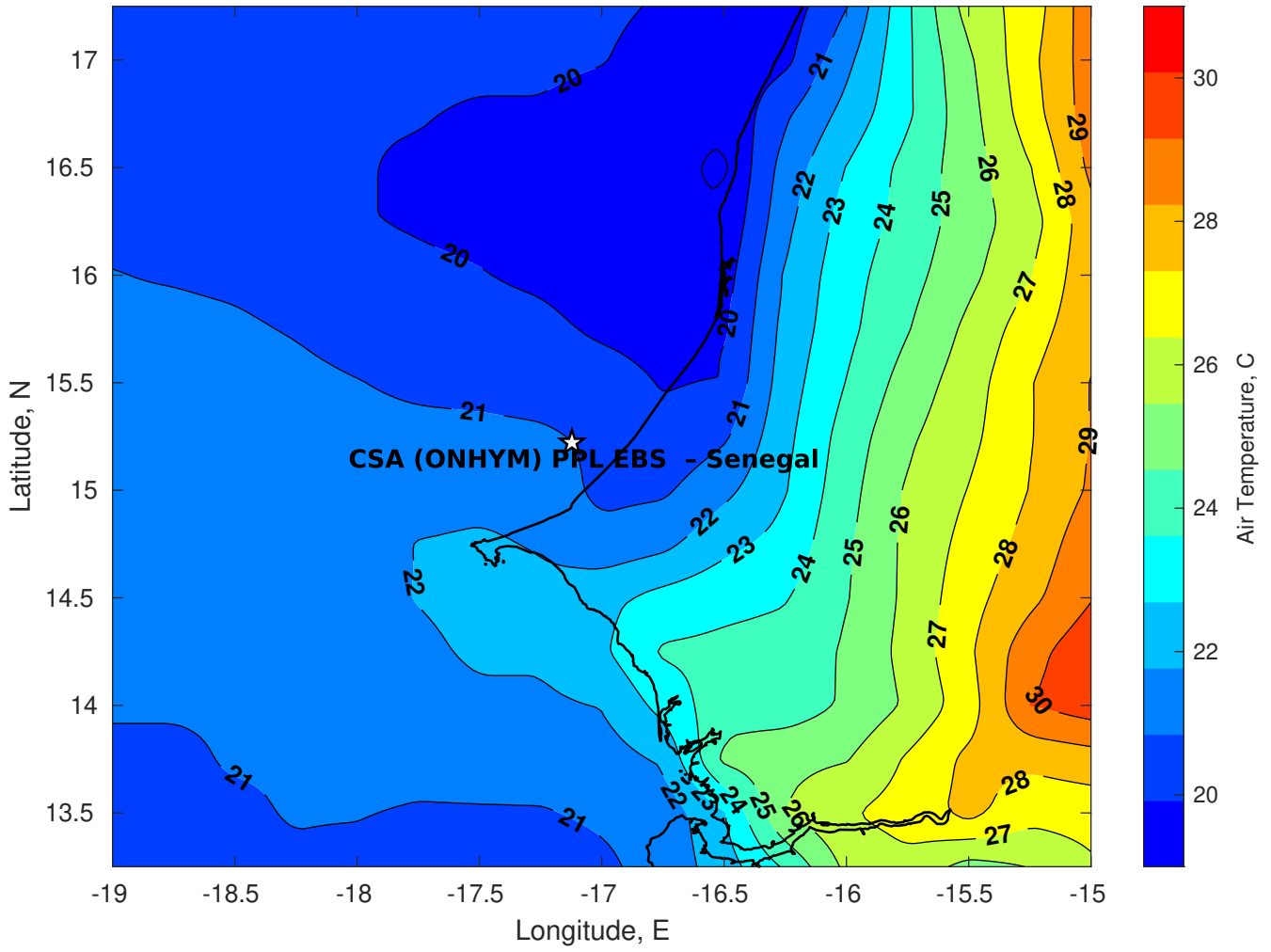
Surface Pressure (mb) for CSA (ONHYM) PPL EBS - Senegal at 24-Mar-2025 00:00:00



Air Temperature (C) for CSA (ONHYM) PPL EBS - Senegal at 22-Mar-2025



Air Temperature (C) for CSA (ONHYM) PPL EBS - Senegal at 22-Mar-2025



Air Temperature (C) for CSA (ONHYM) PPL EBS - Senegal at 22-Mar-2025

