
Marine Weather Forecast for Shell Noches GC19 PPL Geotechnical
Forecast valid as of 22-Mar-2025 0800 GMT

All times are local.

Today

Winds: E, 10-15 kts.

Waves: NE, 1-2 feet, 3-4 sec.

No currents available.

Tonight

Winds: NE, 15-20 kts.

Waves: NE, 2-3 feet, 4-5 sec.

No currents available.

Sunday

Winds: NE, 10-15 kts.

Waves: NE, 3-4 feet, 5-6 sec.

No currents available.

Sunday Night

Winds: NE, 10-15 kts.

Waves: N, 3-4 feet, 5-6 sec.

No currents available.

Monday

Winds: NE, 5-10 kts.

Waves: N, 2-3 feet, 5-6 sec.

No currents available.

Monday Night

Winds: NE, 5-10 kts.

Waves: N, 2-3 feet, 5-6 sec.

No currents available.

Tuesday

Winds: NE, 5-10 kts.

Waves: N, 2-3 feet, 6-7 sec.

No currents available.

Tuesday Night

Winds: NE, 5-10 kts.

Waves: N, 1-2 feet, 5-6 sec.

No currents available.

Wednesday

Winds: E, 5-10 kts.

Waves: N, 2-3 feet, 6-7 sec.

No currents available.

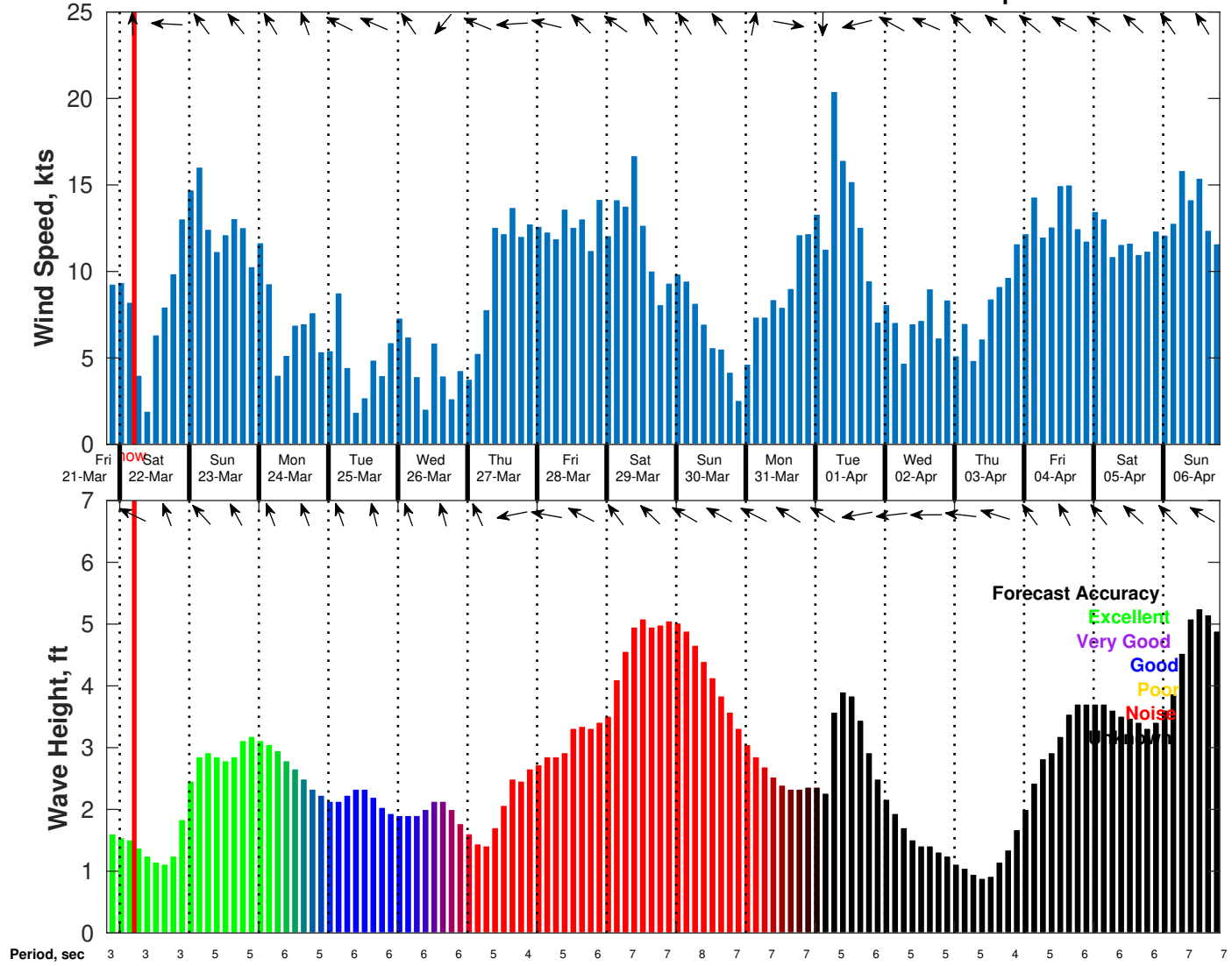
Wednesday Night

Winds: E, 5-10 kts.

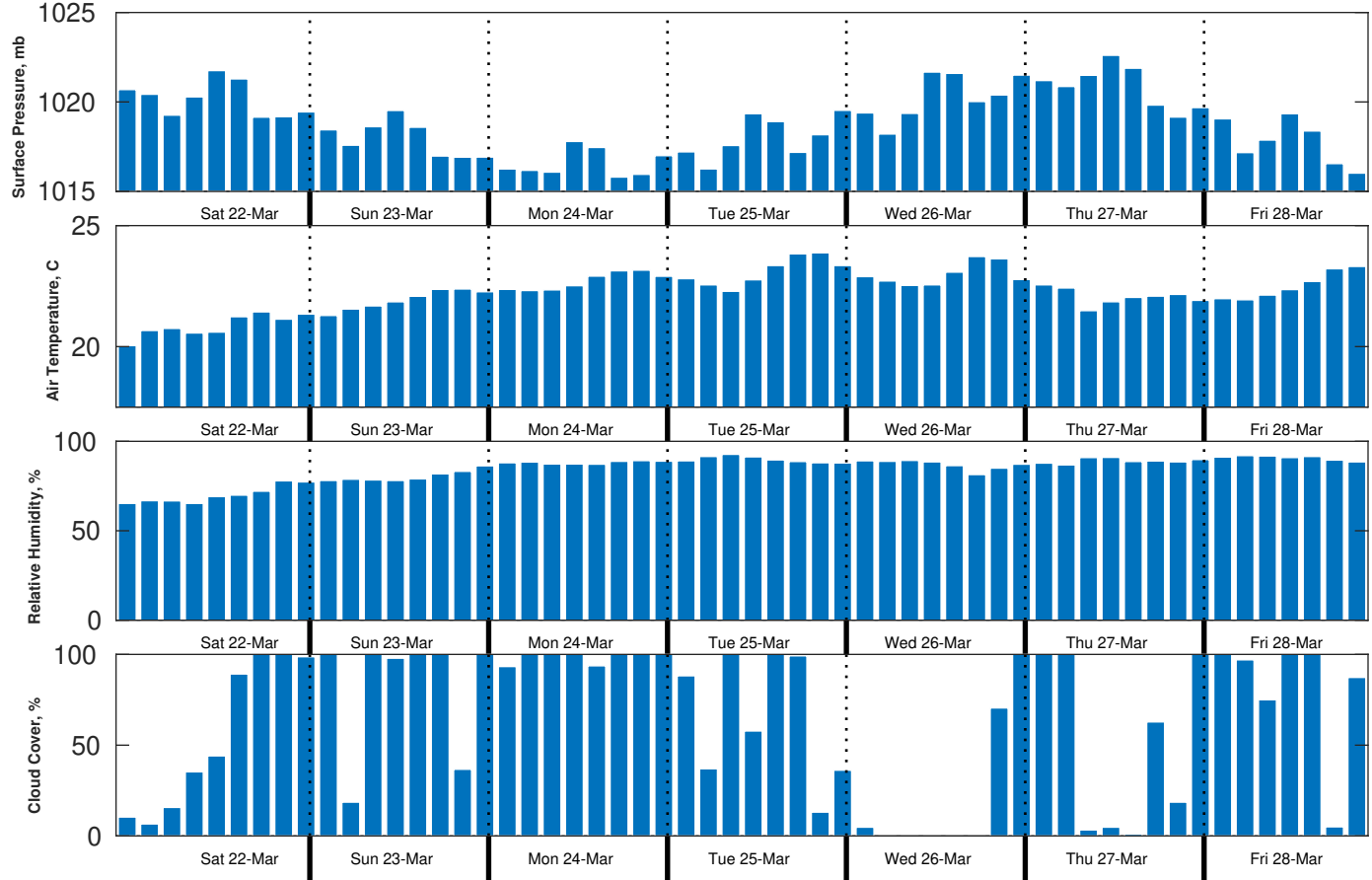
Waves: NE, 1-2 feet, 5-6 sec.

No currents available.

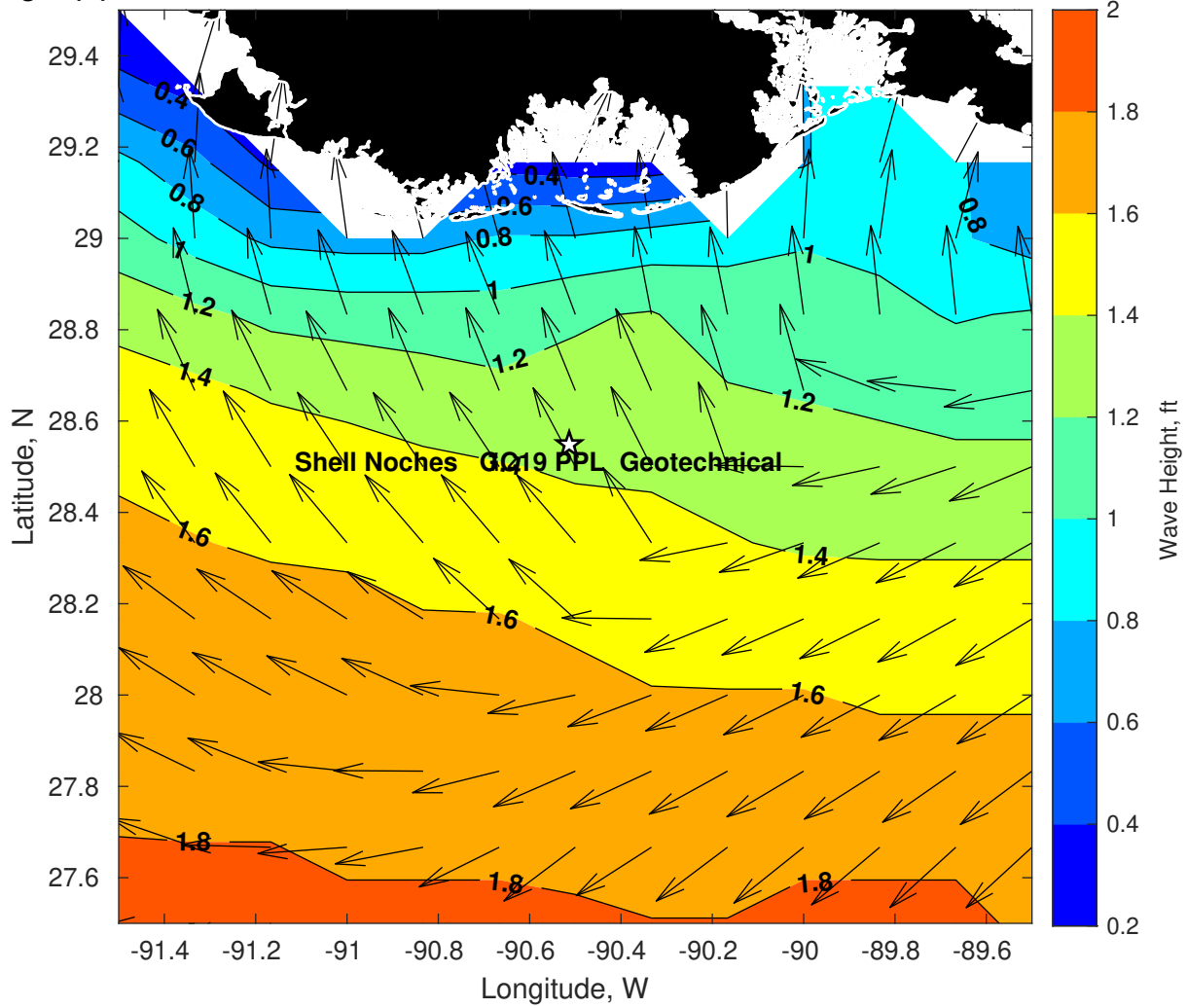
Wind & Wave Forecast for Shell Noches GC19 PPL Geotechnical from 21-Mar-2025 20:00:00 to 06-Apr-2025 20:00:00



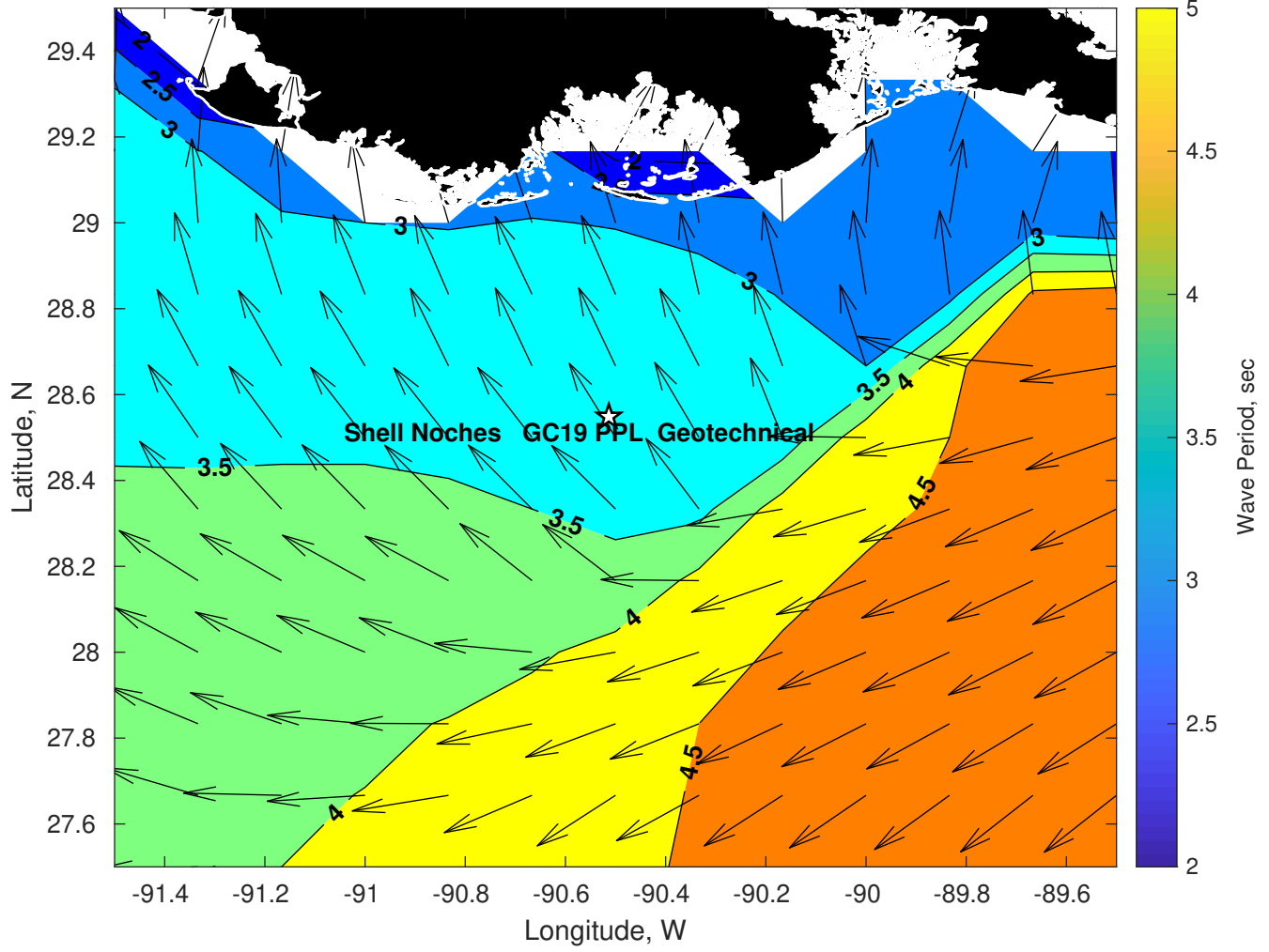
Met Forecast for Shell Noches GC19 PPL Geotechnical from 22-Mar-2025 00:00:00 to 29-Mar-2025 00:00:00



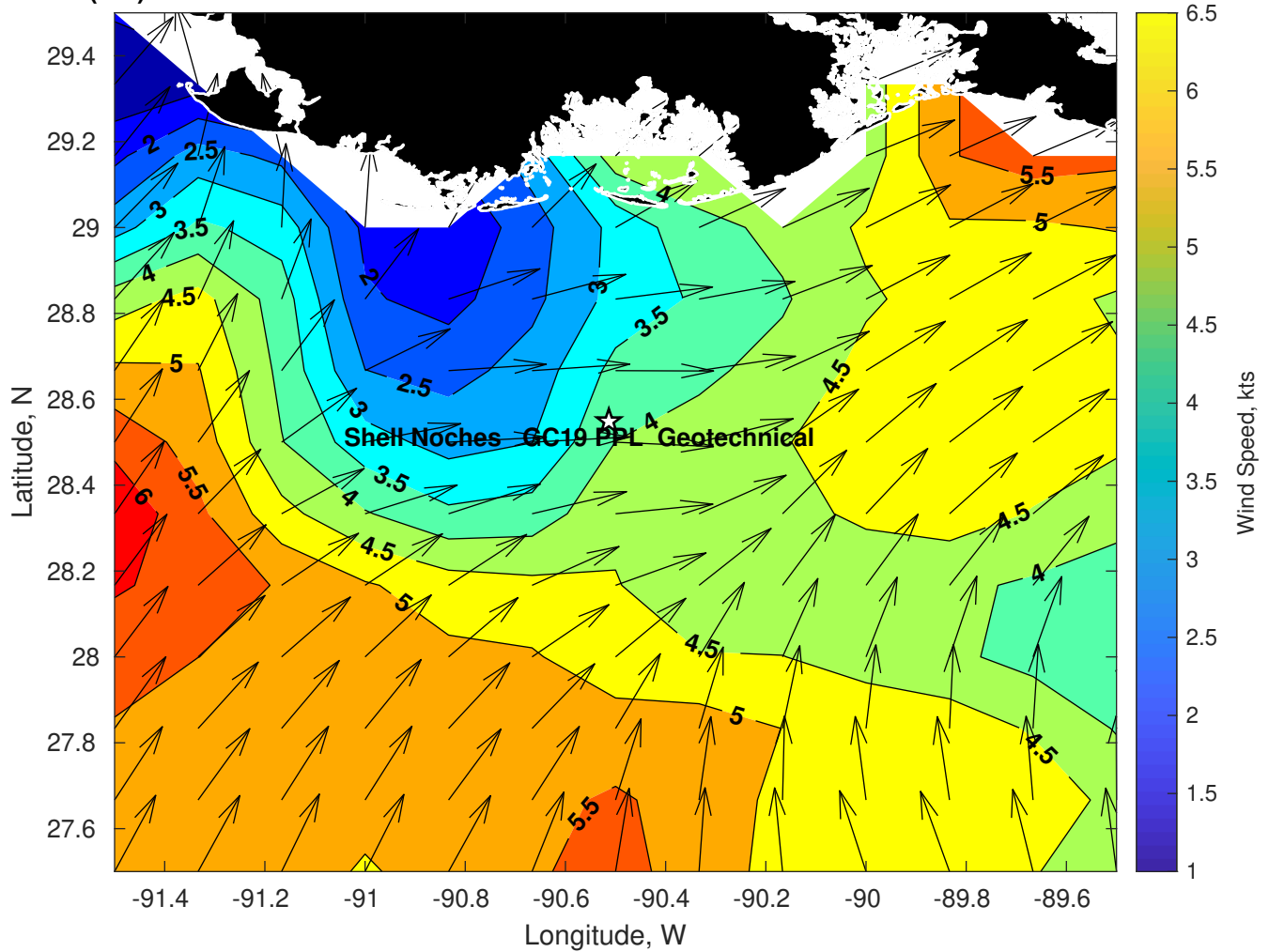
Wave Height (ft) for Shell Noches GC19 PPL Geotechnical at 22-Mar-2025 09:00:00



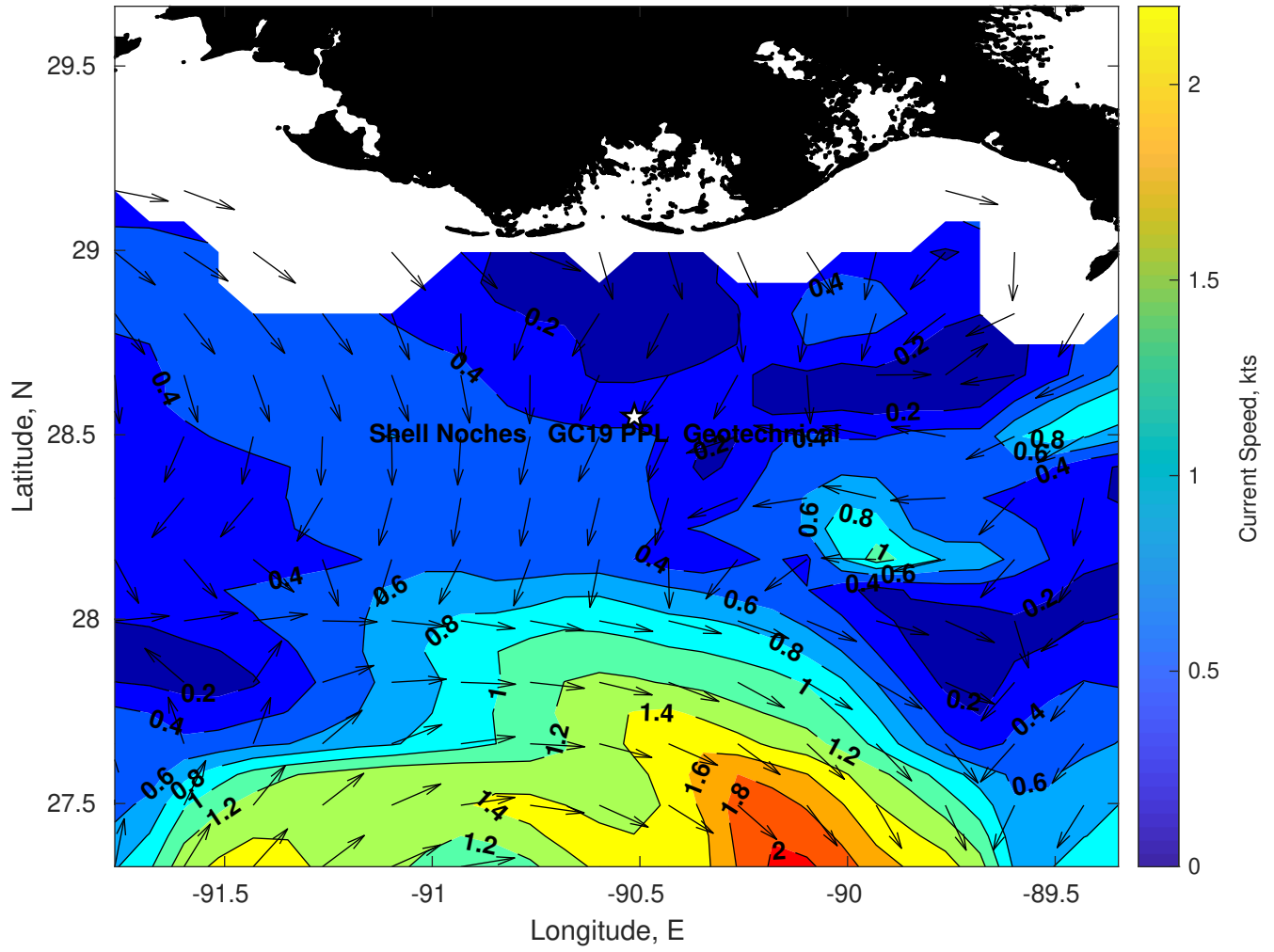
Wave Period (sec) for Shell Noches GC19 PPL Geotechnical at 22-Mar-2025 09:00:00



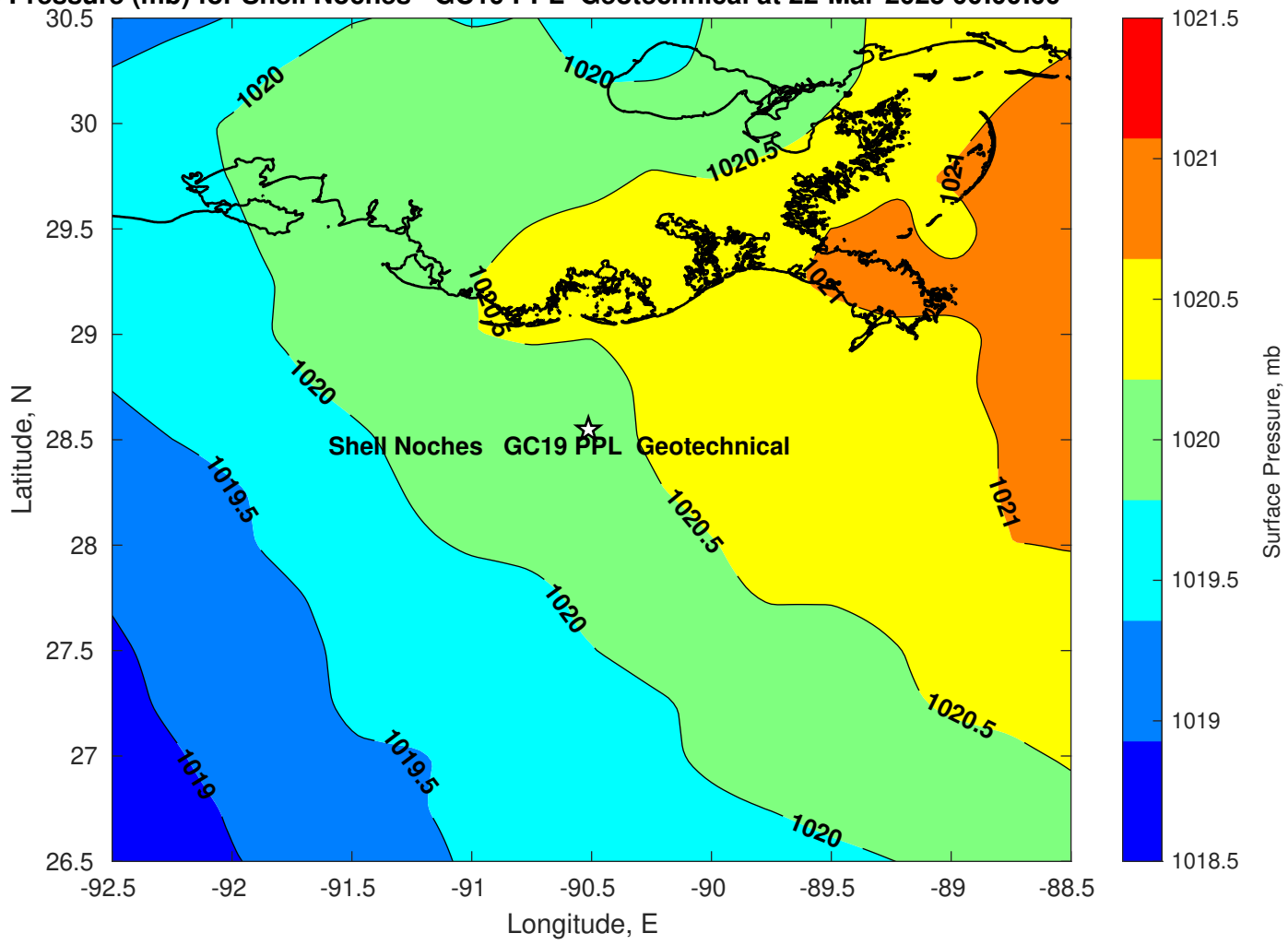
Winds (kts) for Shell Noches GC19 PPL Geotechnical at 22-Mar-2025 09:00:00



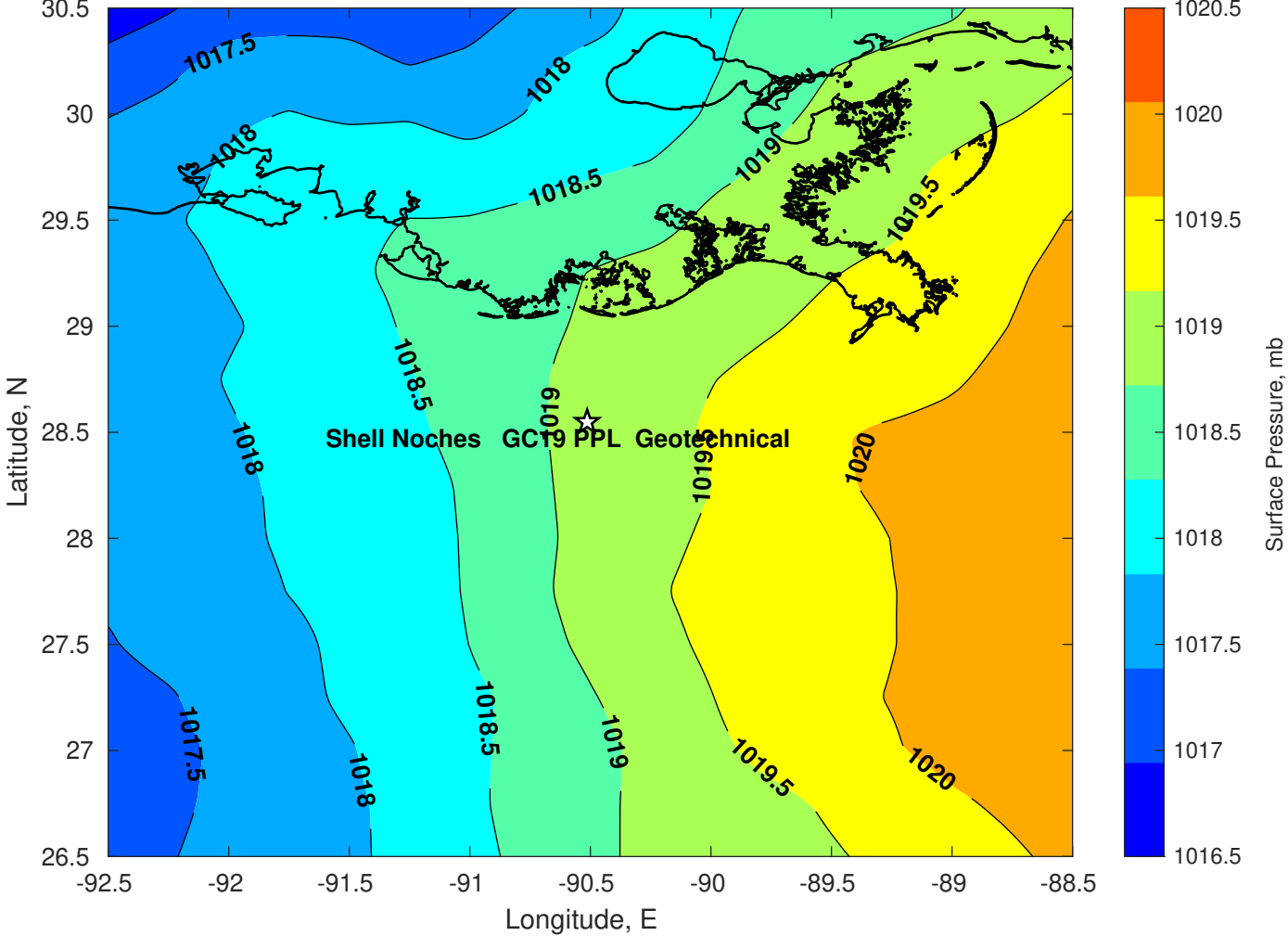
Surface Currents for Shell Noches GC19 PPL Geotechnical at 21-Mar-2025 00:00:00



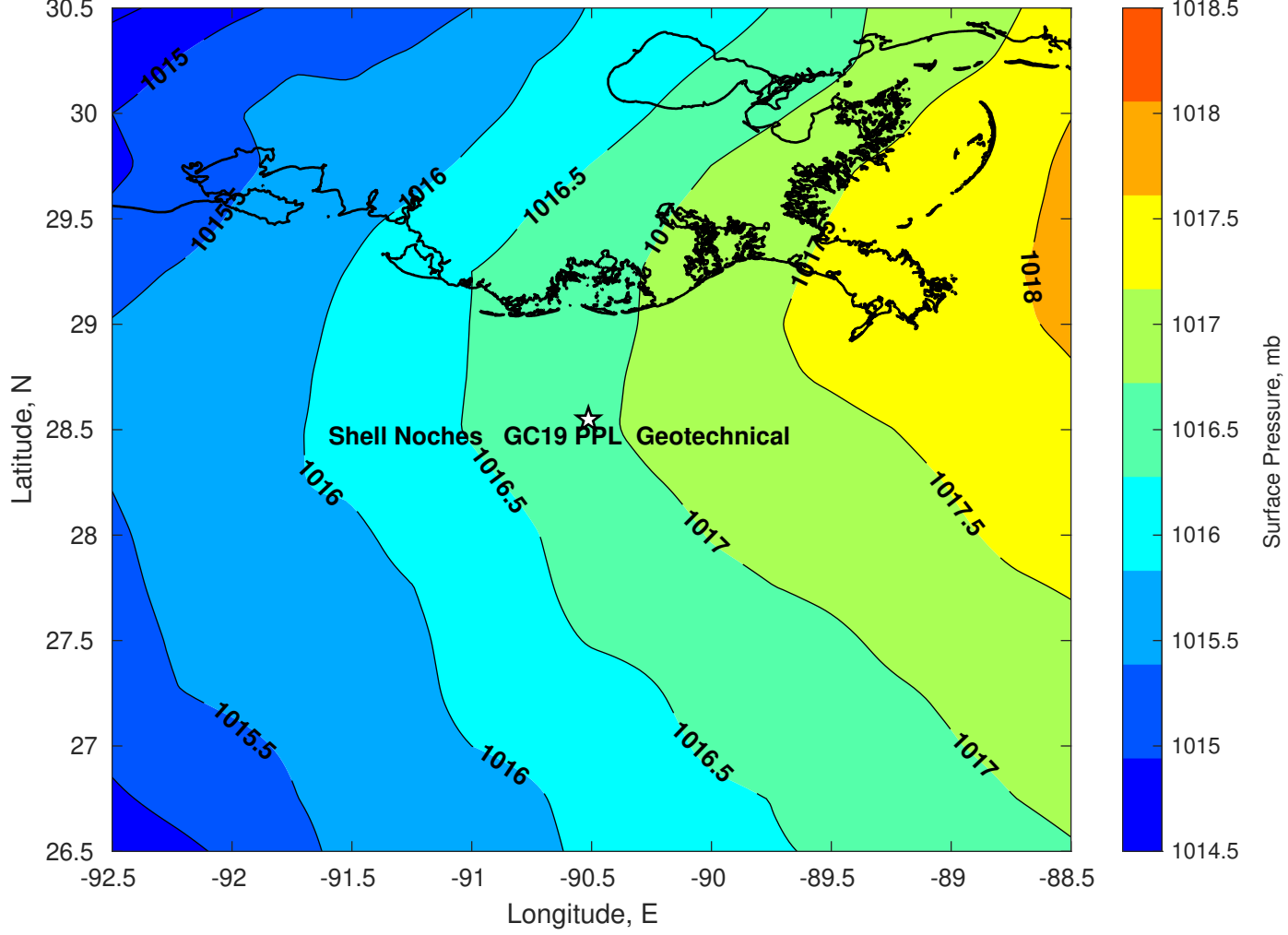
Surface Pressure (mb) for Shell Noches GC19 PPL Geotechnical at 22-Mar-2025 00:00:00



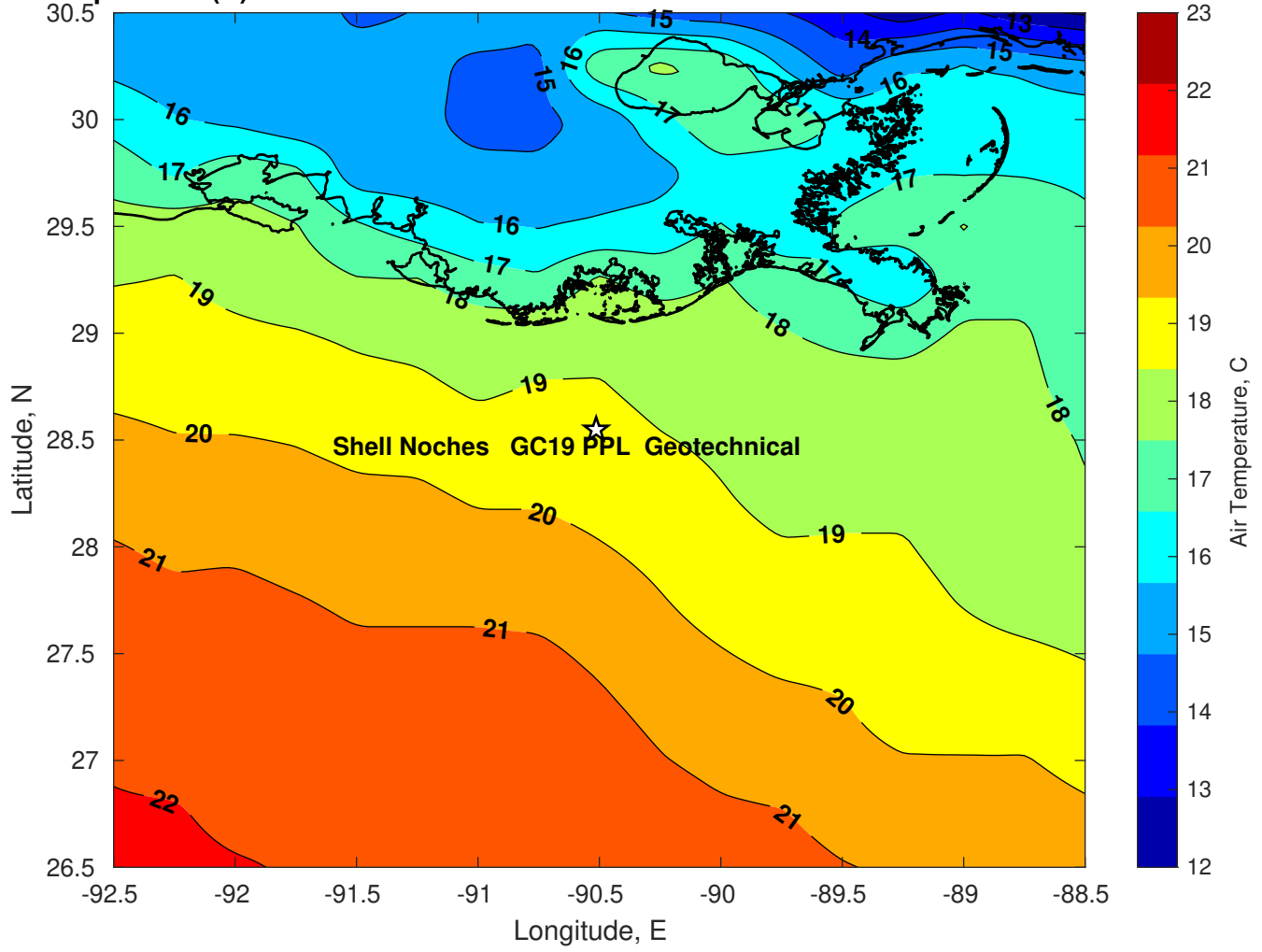
Surface Pressure (mb) for Shell Noches GC19 PPL Geotechnical at 23-Mar-2025 00:00:00



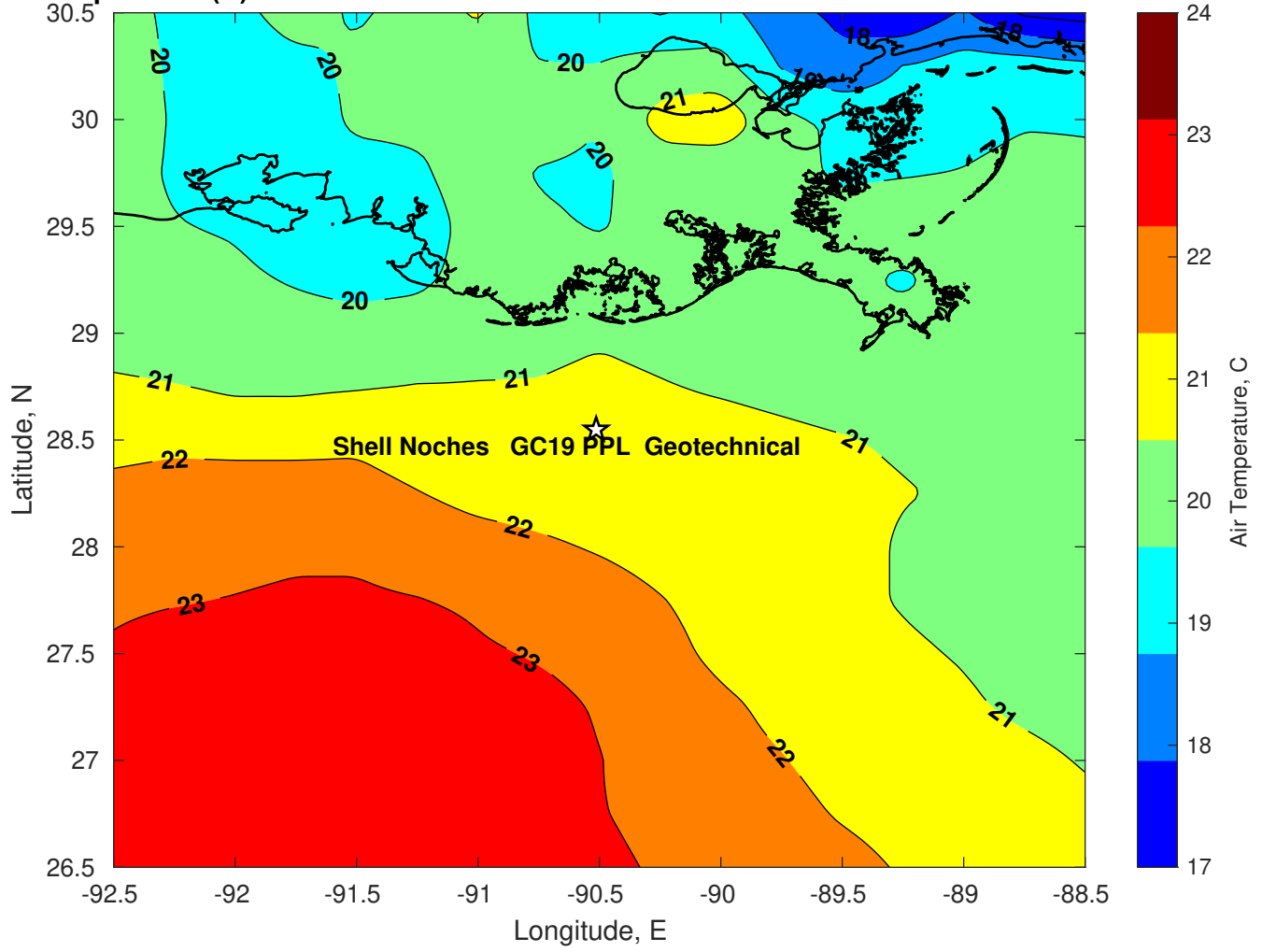
Surface Pressure (mb) for Shell Noches GC19 PPL Geotechnical at 24-Mar-2025 00:00:00



Air Temperature (C) for Shell Noches GC19 PPL Geotechnical at 22-Mar-2025



Air Temperature (C) for Shell Noches GC19 PPL Geotechnical at 22-Mar-2025



Air Temperature (C) for Shell Noches GC19 PPL Geotechnical at 22-Mar-2025

