
Marine Weather Forecast for TOTAL Namibia GTS

Forecast valid as of 22-Mar-2025 0800 GMT

All times are local.

Today

Winds: NW, 10-15 kts.

Waves: NW, 5-6 feet, 9-10 sec.

No currents available.

Tonight

Winds: W, 5-10 kts.

Waves: NW, 5-6 feet, 9-10 sec.

No currents available.

Sunday

Winds: NW, 5-10 kts.

Waves: NW, 8-9 feet, 11-12 sec.

No currents available.

Sunday Night

Winds: W, 5-10 kts.

Waves: NW, 7-8 feet, 11-12 sec.

No currents available.

Monday

Winds: NW, 10-15 kts.

Waves: NW, 6-7 feet, 10-11 sec.

No currents available.

Monday Night

Winds: N, 5-10 kts.

Waves: NW, 5-6 feet, 9-10 sec.

No currents available.

Tuesday

Winds: NE, 15-20 kts.

Waves: NW, 5-6 feet, 9-10 sec.

No currents available.

Tuesday Night

Winds: NE, 15-20 kts.

Waves: NW, 6-7 feet, 9-10 sec.

No currents available.

Wednesday

Winds: NE, 20-25 kts.

Waves: N, 7-8 feet, 8-9 sec.

No currents available.

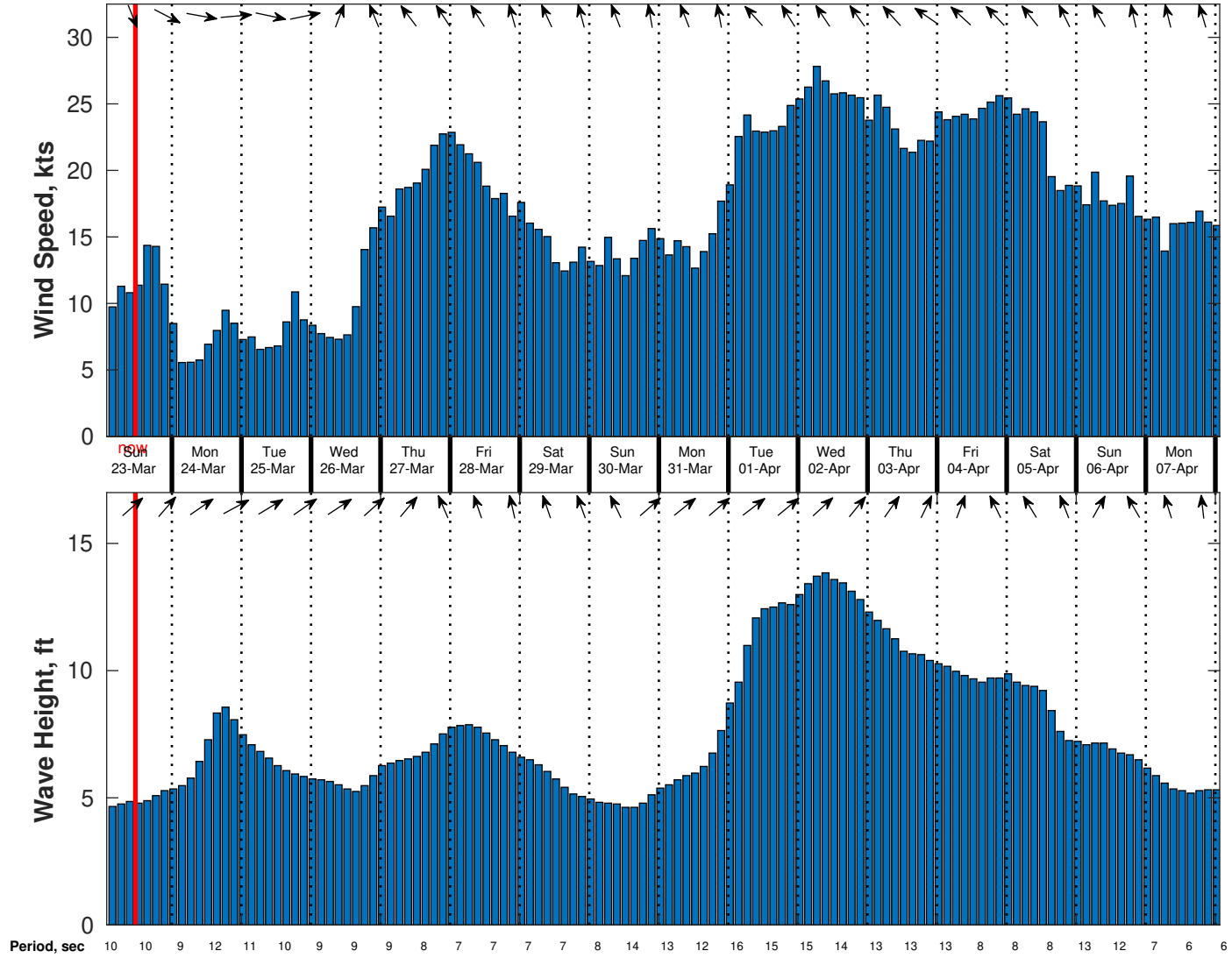
Wednesday Night

Winds: NE, 20-25 kts.

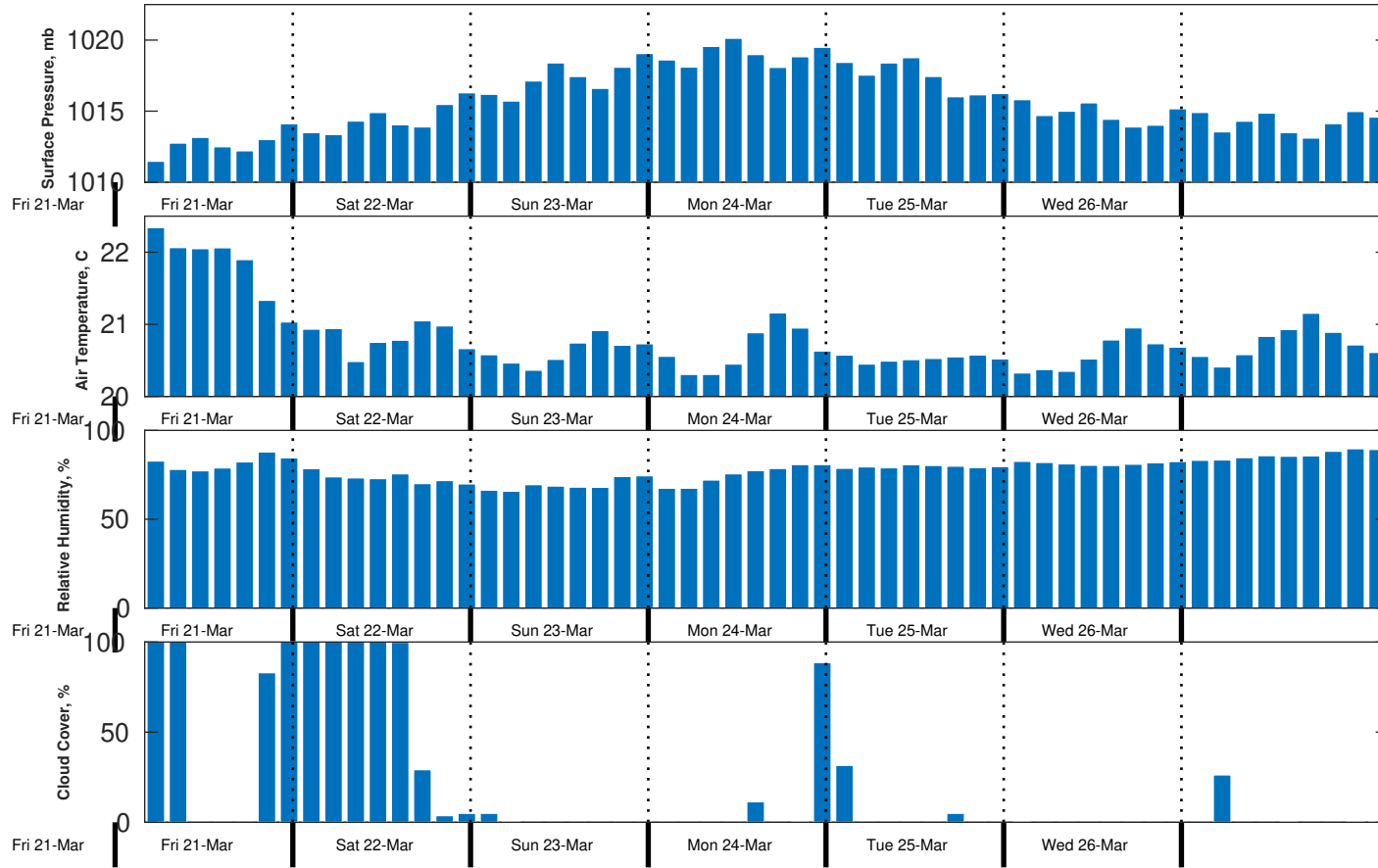
Waves: N, 7-8 feet, 7-8 sec.

No currents available.

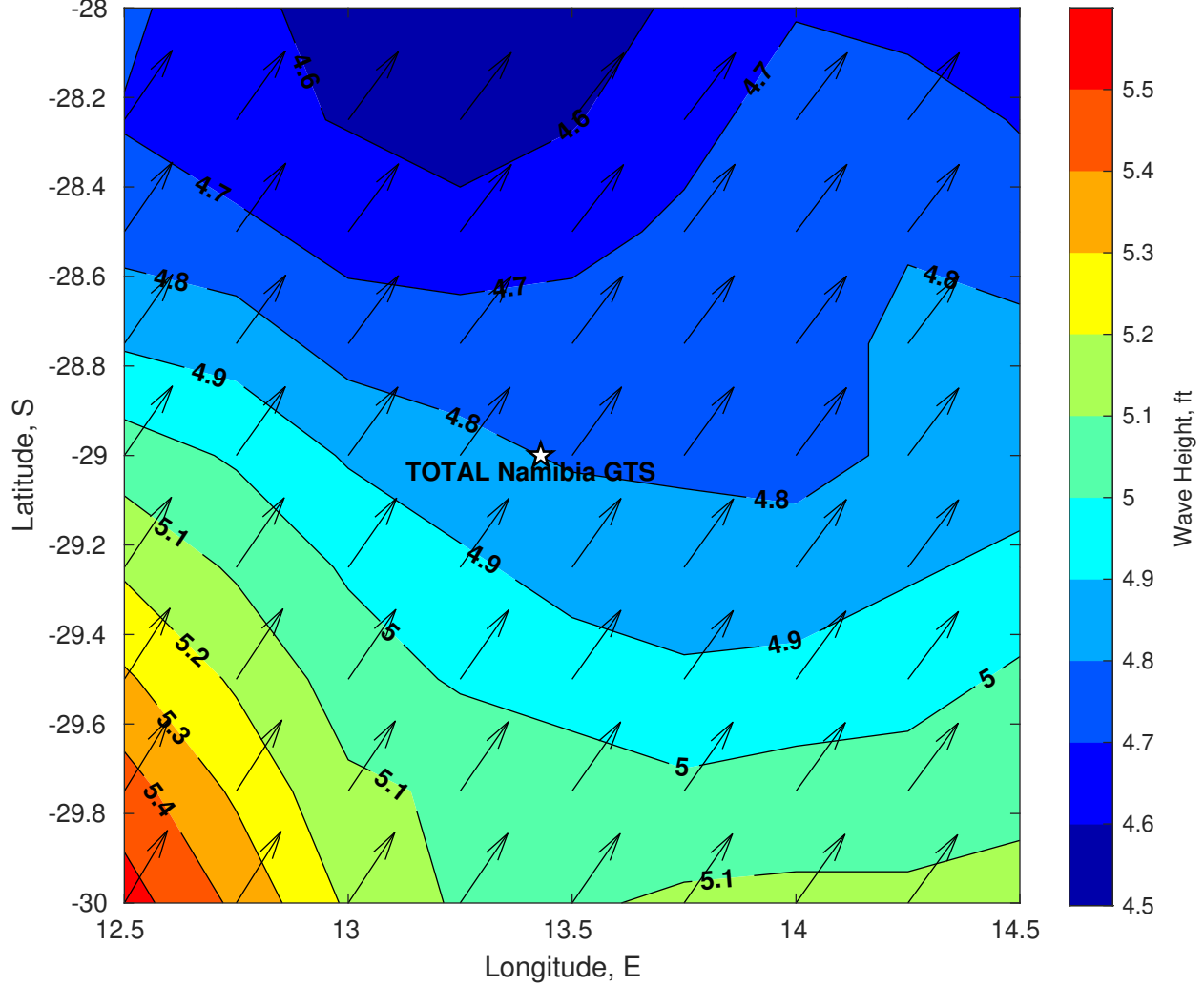
Wind & Wave Forecast for TOTAL Namibia GTS from 22-Mar-2025 02:00:00 to 07-Apr-2025 02:00:00



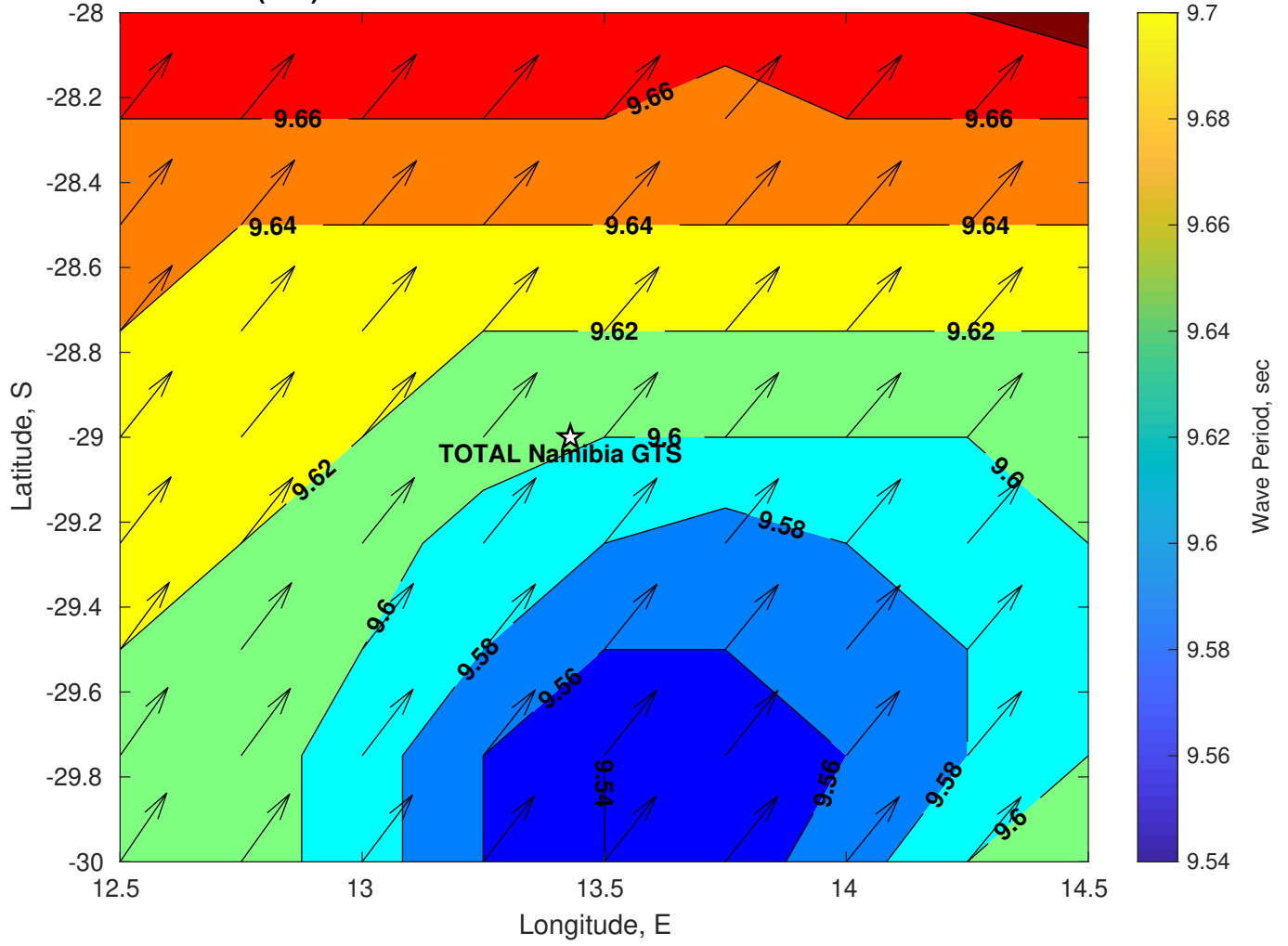
Met Forecast for TOTAL Namibia GTS from 22-Mar-2025 00:00:00 to 29-Mar-2025 00:00:00



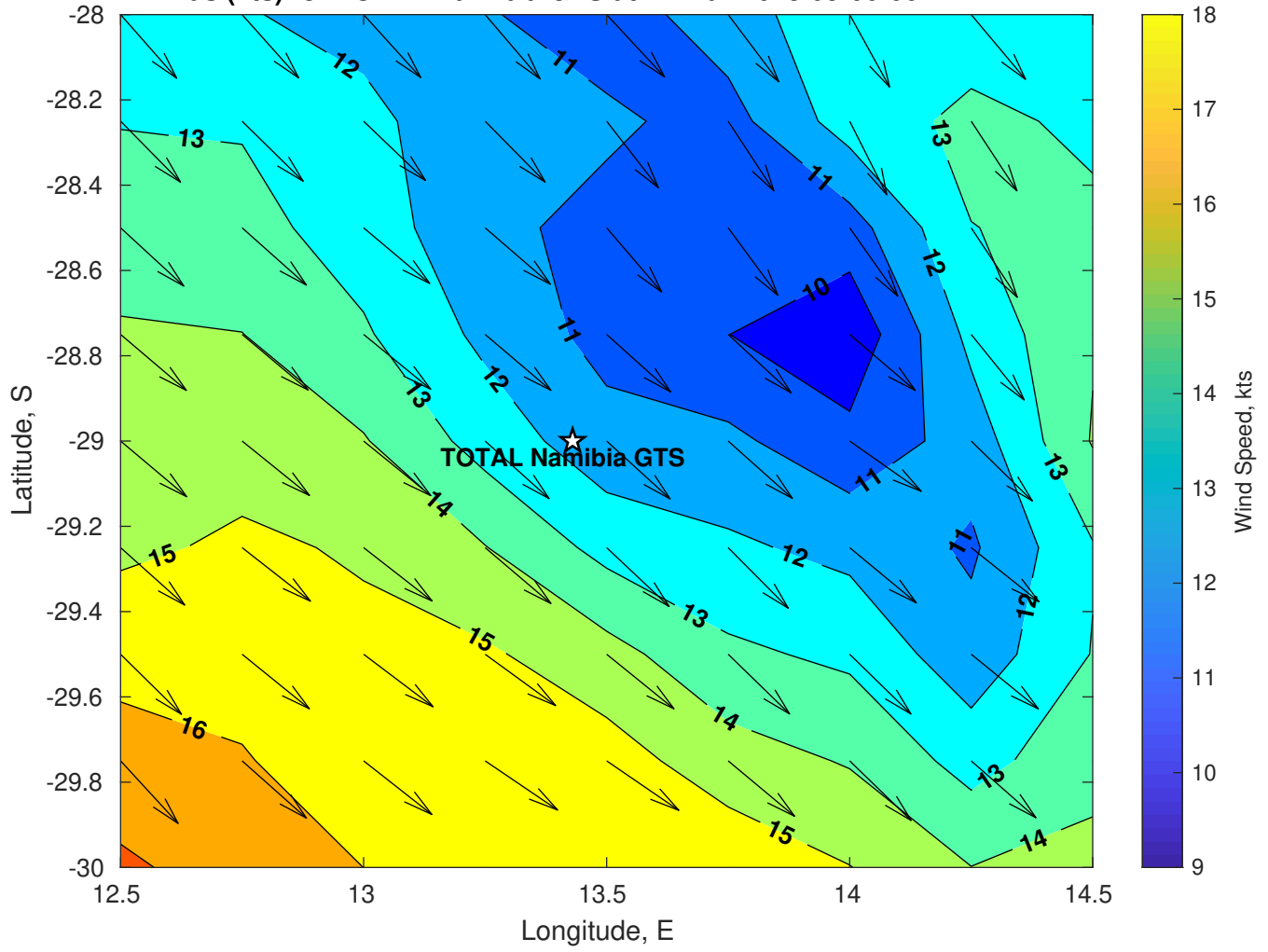
Wave Height (ft) for TOTAL Namibia GTS at 22-Mar-2025 09:00:00



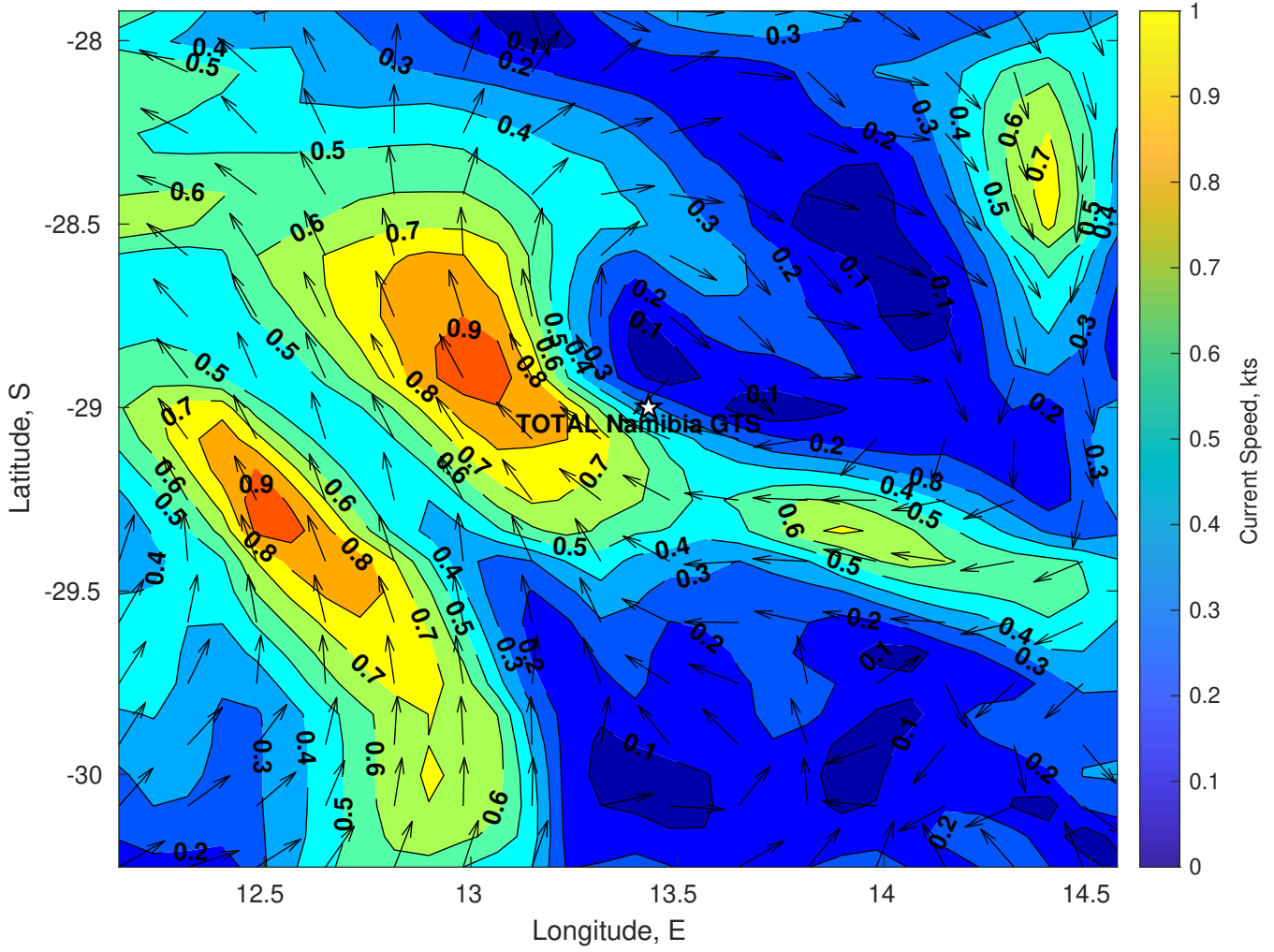
Wave Period (sec) for TOTAL Namibia GTS at 22-Mar-2025 09:00:00



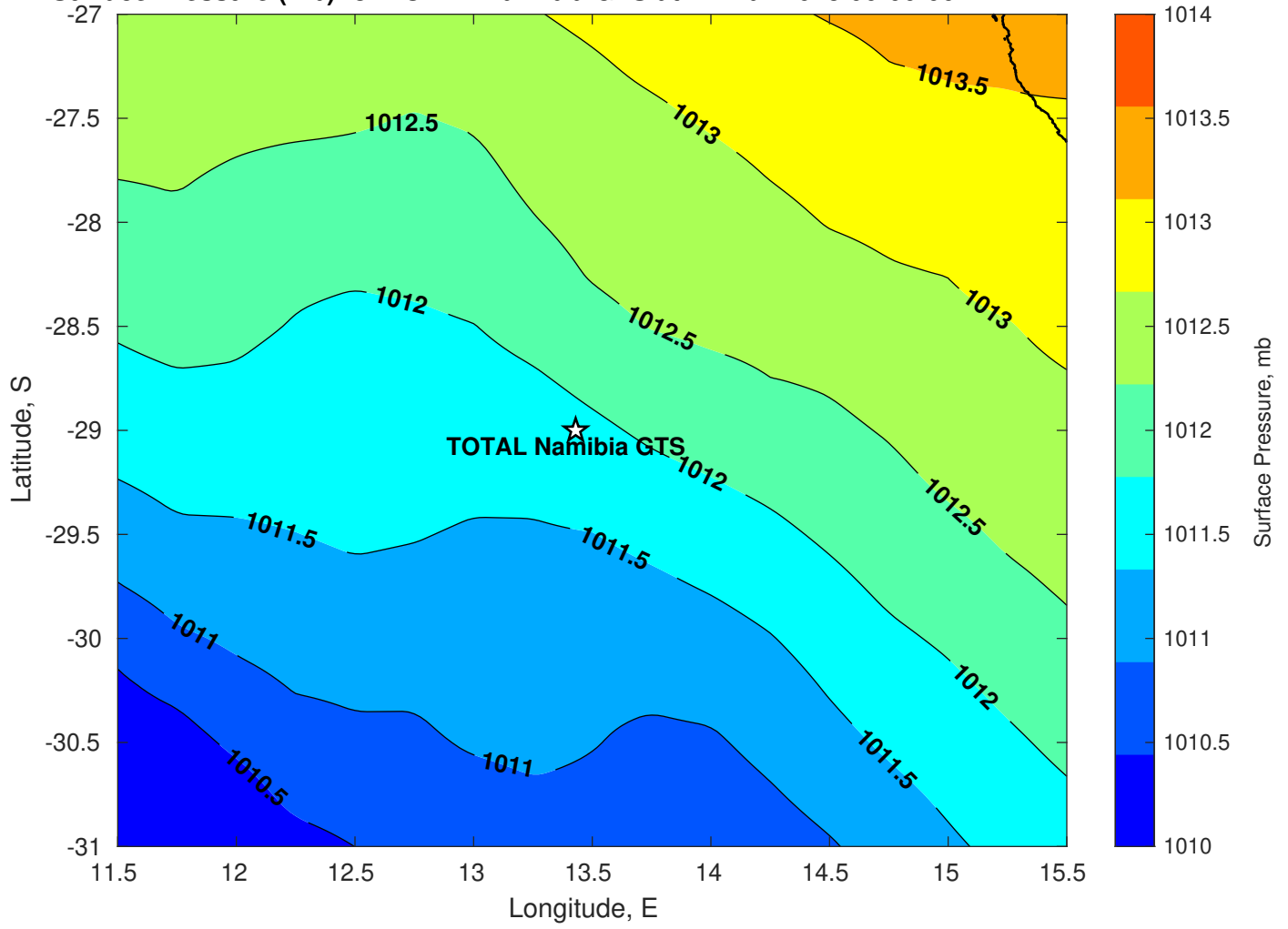
Winds (kts) for TOTAL Namibia GTS at 22-Mar-2025 09:00:00



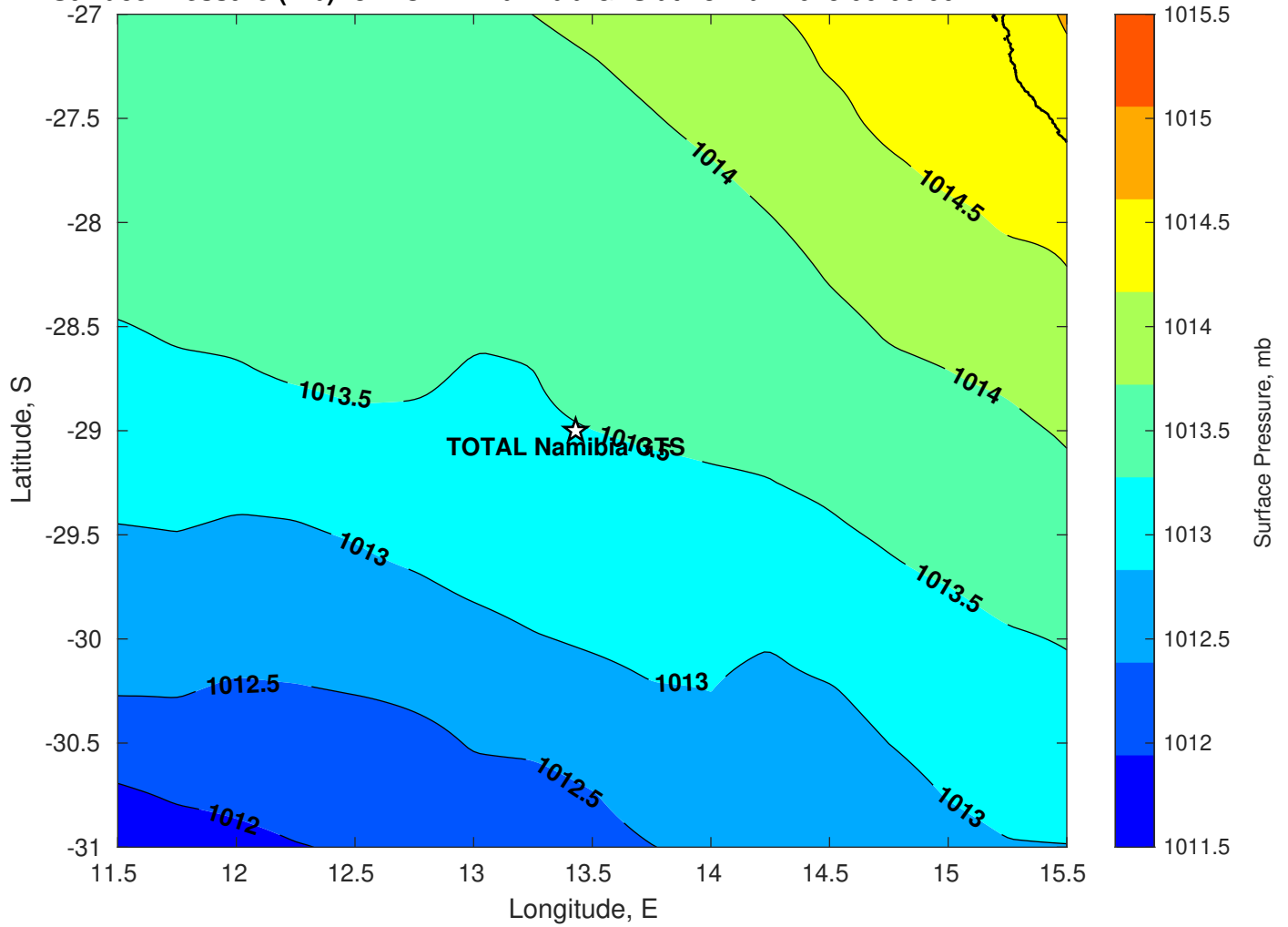
Surface Currents for TOTAL Namibia GTS at 21-Mar-2025 00:00:00



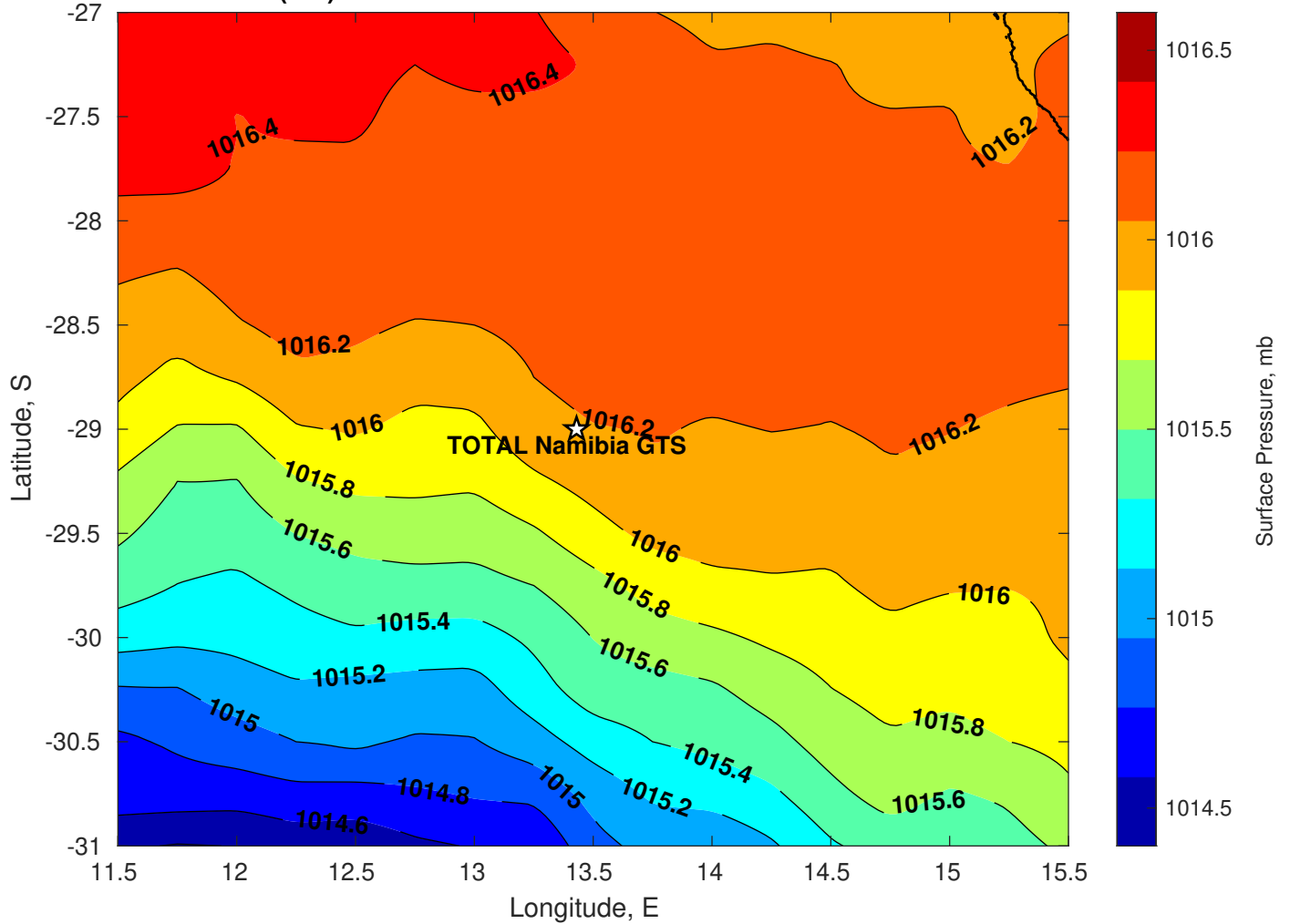
Surface Pressure (mb) for TOTAL Namibia GTS at 22-Mar-2025 00:00:00



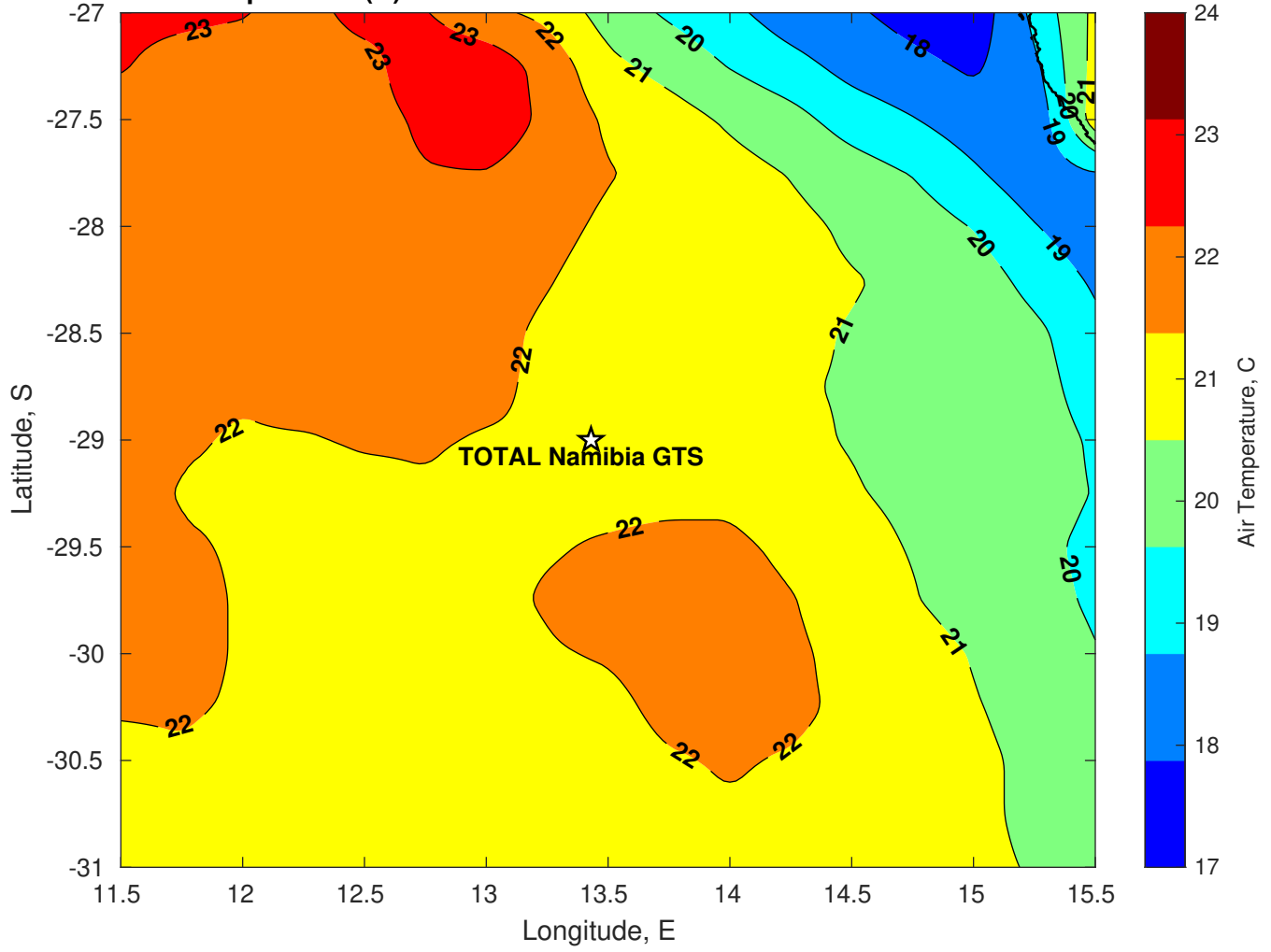
Surface Pressure (mb) for TOTAL Namibia GTS at 23-Mar-2025 00:00:00



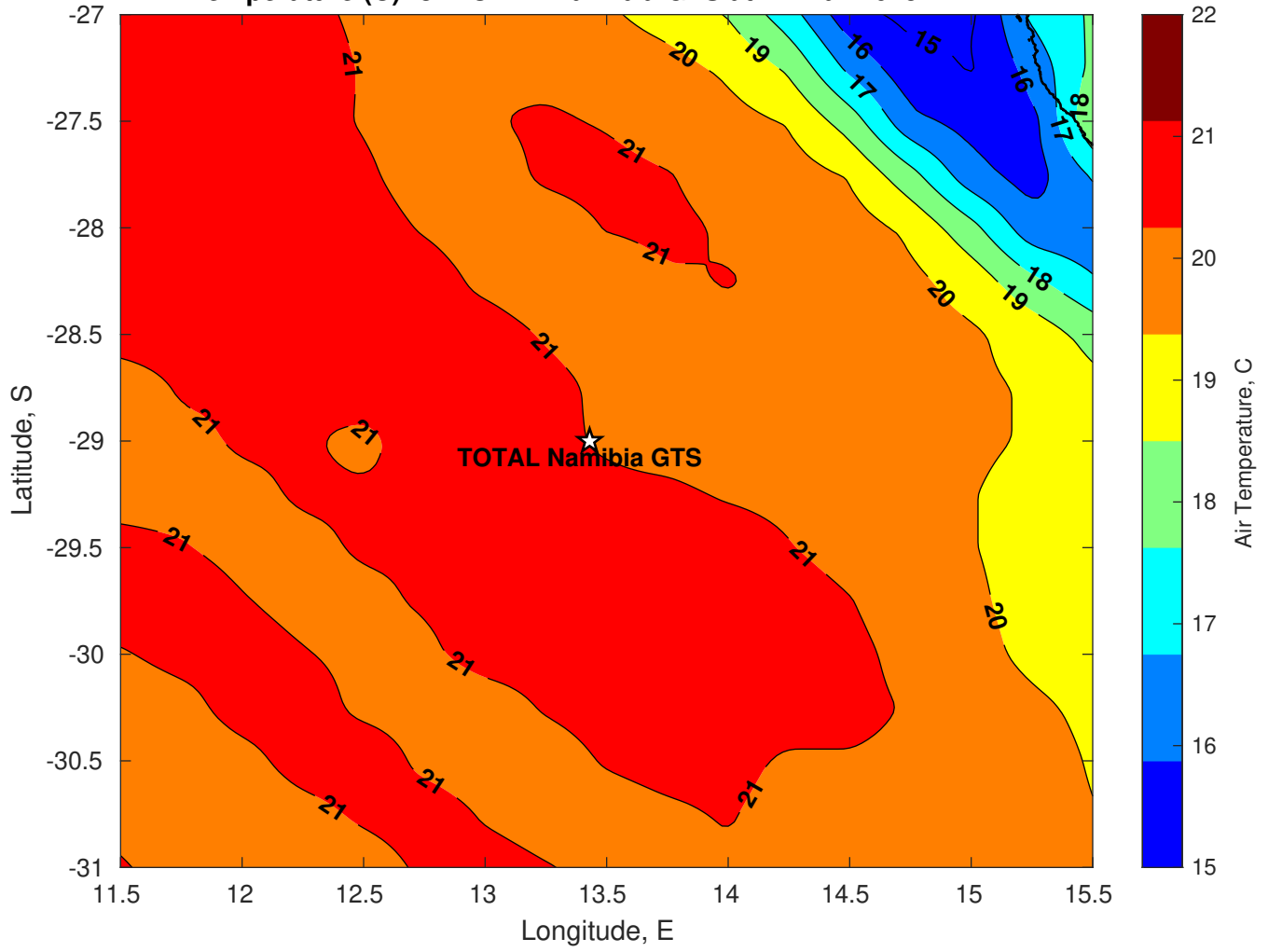
Surface Pressure (mb) for TOTAL Namibia GTS at 24-Mar-2025 00:00:00



Air Temperature (C) for TOTAL Namibia GTS at 22-Mar-2025



Air Temperature (C) for TOTAL Namibia GTS at 22-Mar-2025



Air Temperature (C) for TOTAL Namibia GTS at 22-Mar-2025

