

\*\*\*\*\*

Marine Weather Forecast for CSA (ONHYM) PPL EBS – Sierra Leone

Forecast valid as of 23-Mar-2025 0800 GMT

\*\*\*\*\*

All times are local.

Today

Winds: NW, 10-15 kts.

Waves: N, 1-2 feet, 11-12 sec.

No currents available.

Tonight

Winds: NW, 10-15 kts.

Waves: N, 2-3 feet, 11-12 sec.

No currents available.

Monday

Winds: NE, 5-10 kts.

Waves: N, 1-2 feet, 10-11 sec.

No currents available.

Monday Night

Winds: NW, 5-10 kts.

Waves: N, 1-2 feet, 10-11 sec.

No currents available.

Tuesday

Winds: NW, 10-15 kts.

Waves: N, 2-3 feet, 10-11 sec.

No currents available.

Tuesday Night

Winds: NW, 10-15 kts.

Waves: N, 2-3 feet, 14-15 sec.

No currents available.

Wednesday

Winds: NW, 10-15 kts.

Waves: N, 1-2 feet, 10-11 sec.

No currents available.

Wednesday Night

Winds: W, 10-15 kts.

Waves: N, 2-3 feet, 10-11 sec.

No currents available.

Thursday

Winds: NW, 5-10 kts.

Waves: N, 1-2 feet, 13-14 sec.

No currents available.

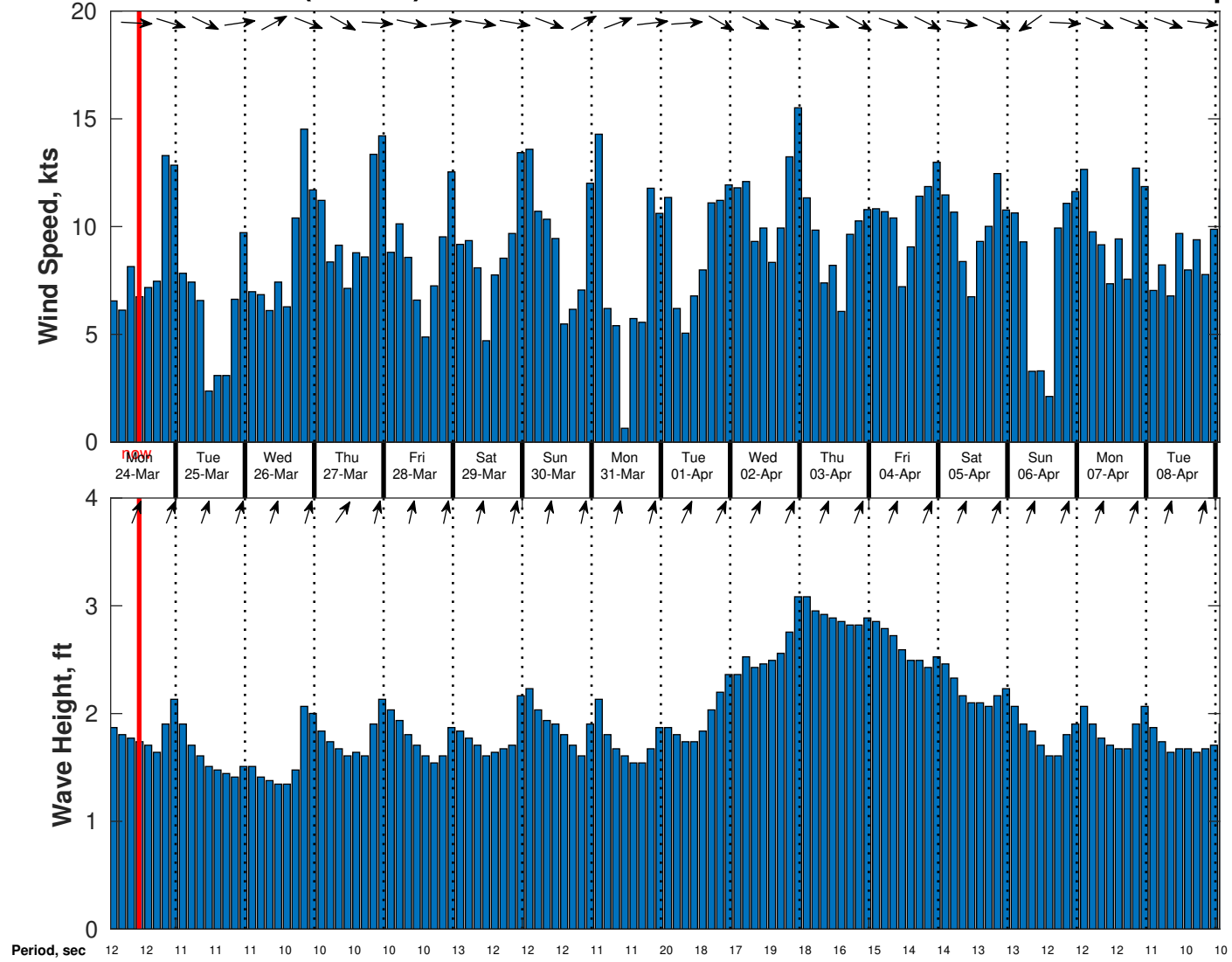
Thursday Night

Winds: NW, 10-15 kts.

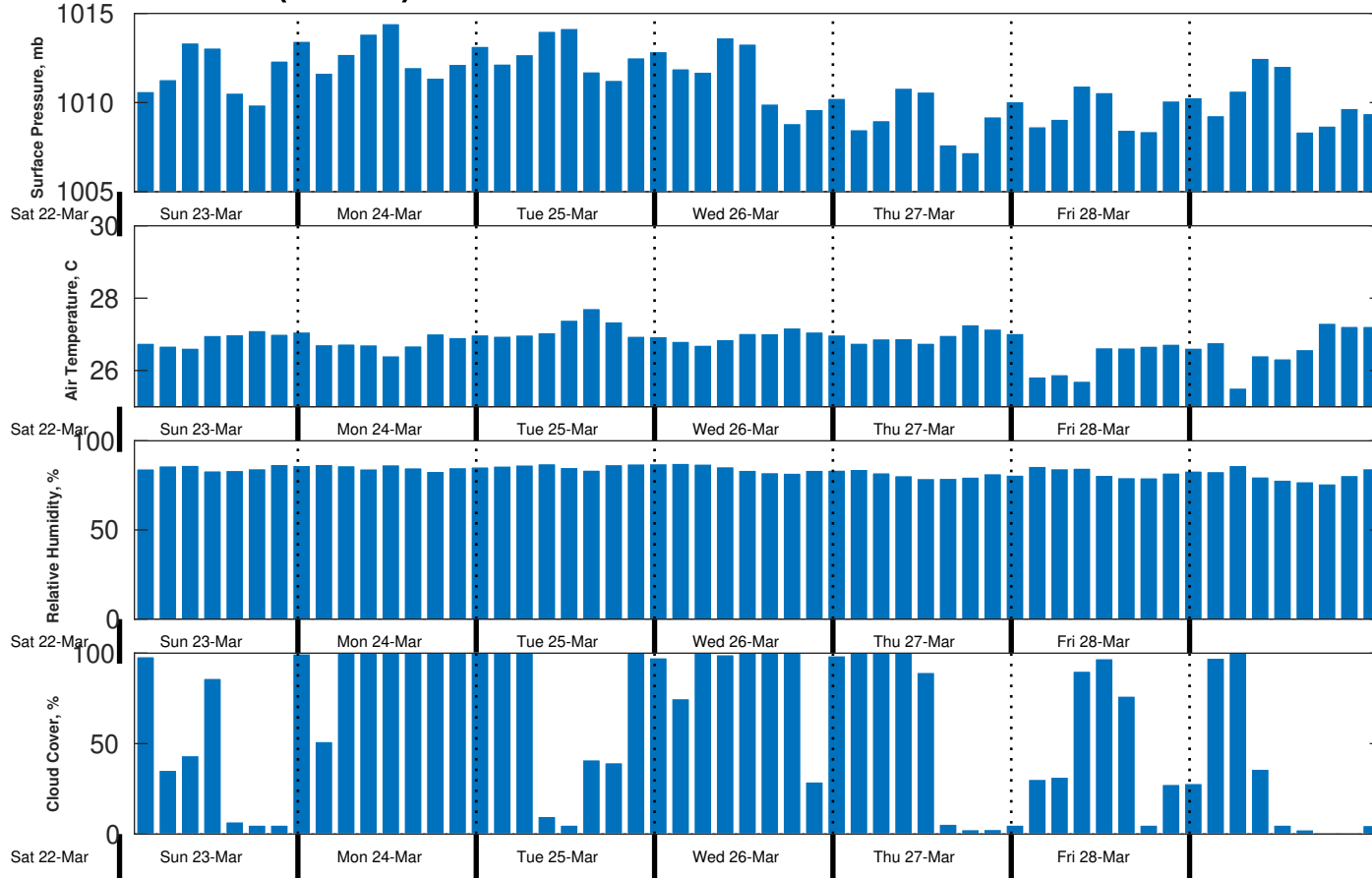
Waves: N, 1-2 feet, 13-14 sec.

No currents available.

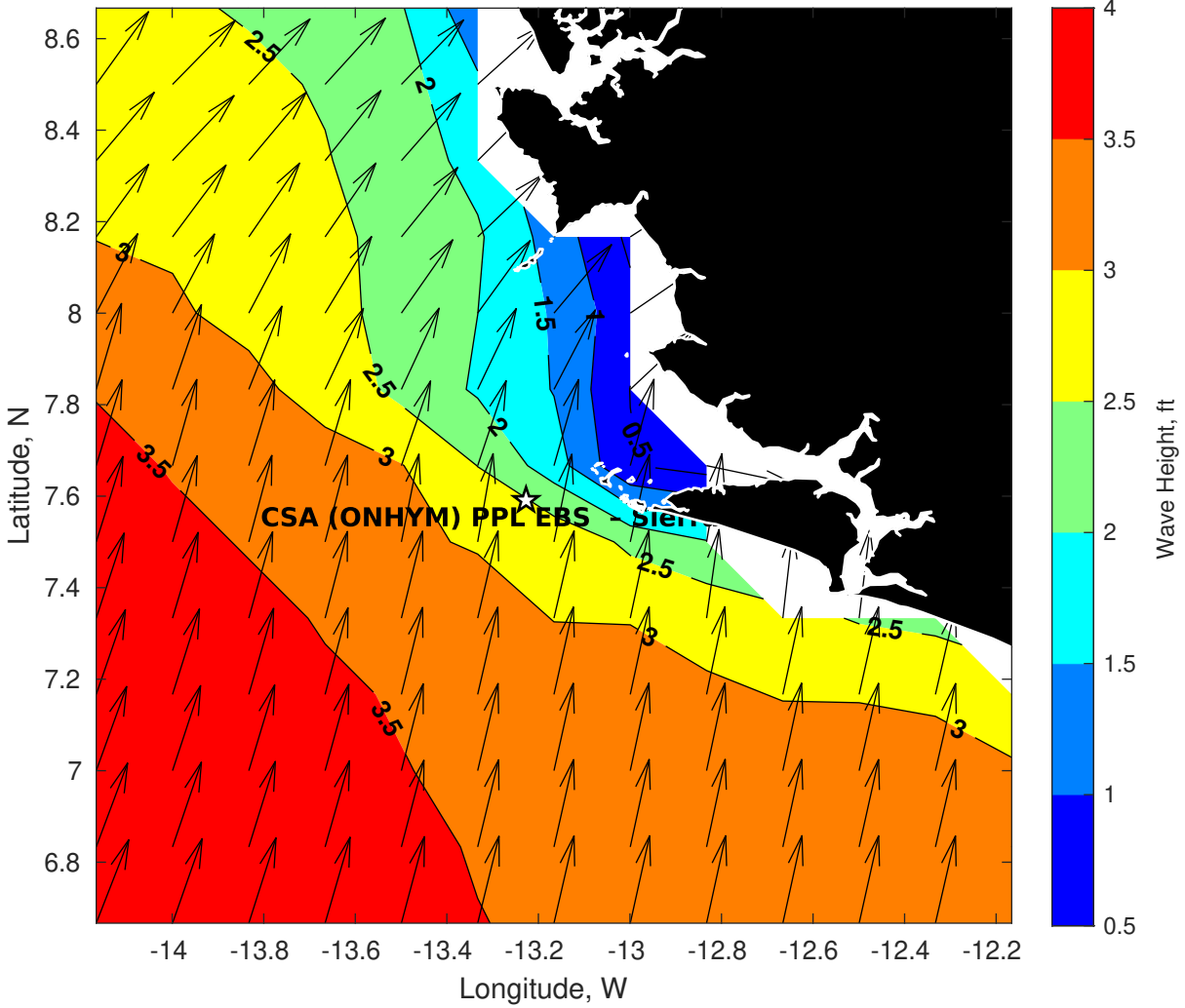
### Wind & Wave Forecast for CSA (ONHYM) PPL EBS - Sierra Leone from 23-Mar-2025 01:00:00 to 08-Apr-2025 01:00:00



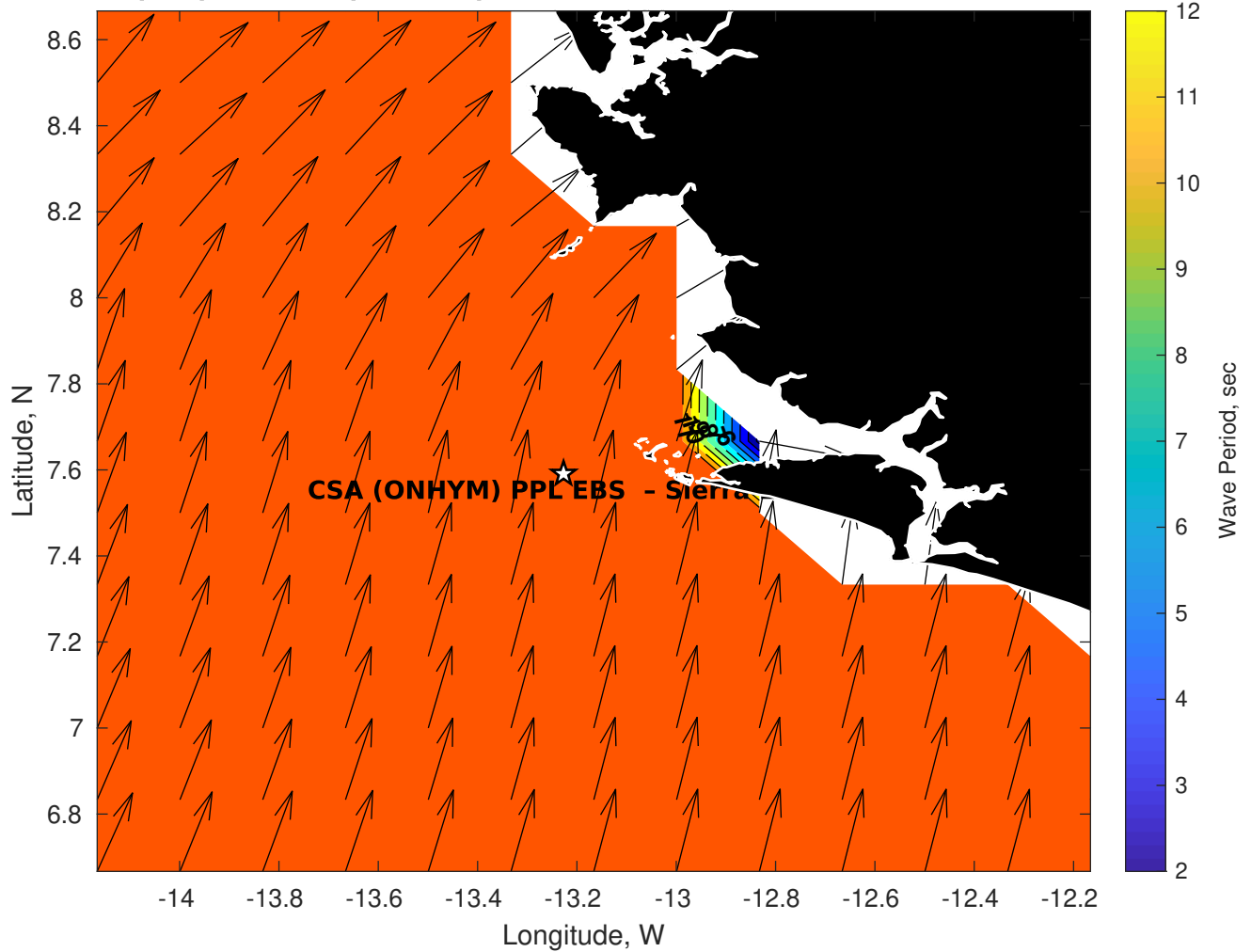
**Met Forecast for CSA (ONHYM) PPL EBS - Sierra Leone from 23-Mar-2025 00:00:00 to 30-Mar-2025 00:00:00**



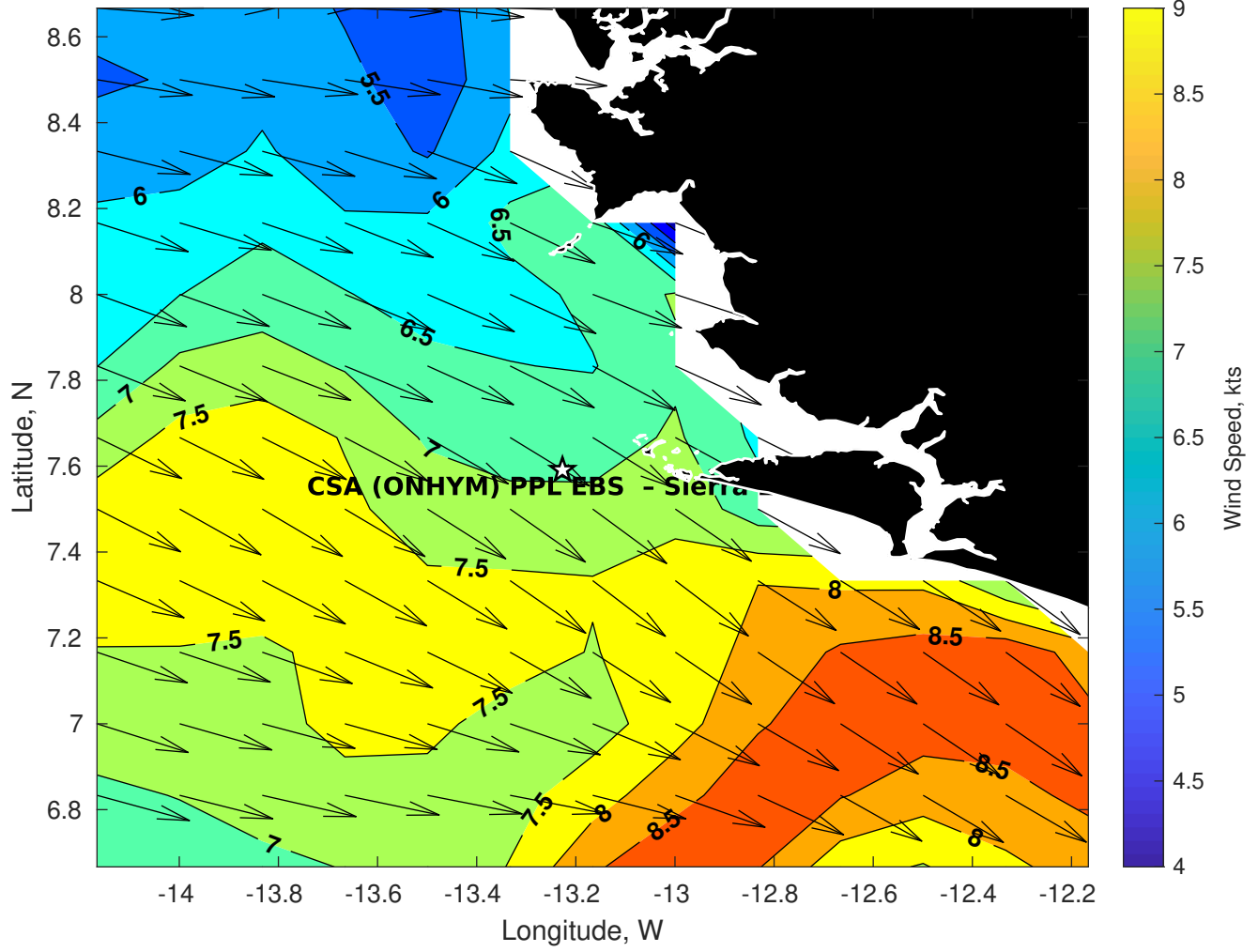
**Wave Height (ft) for CSA (ONHYM) PPL EBS - Sierra Leone at 23-Mar-2025 09:00:00**



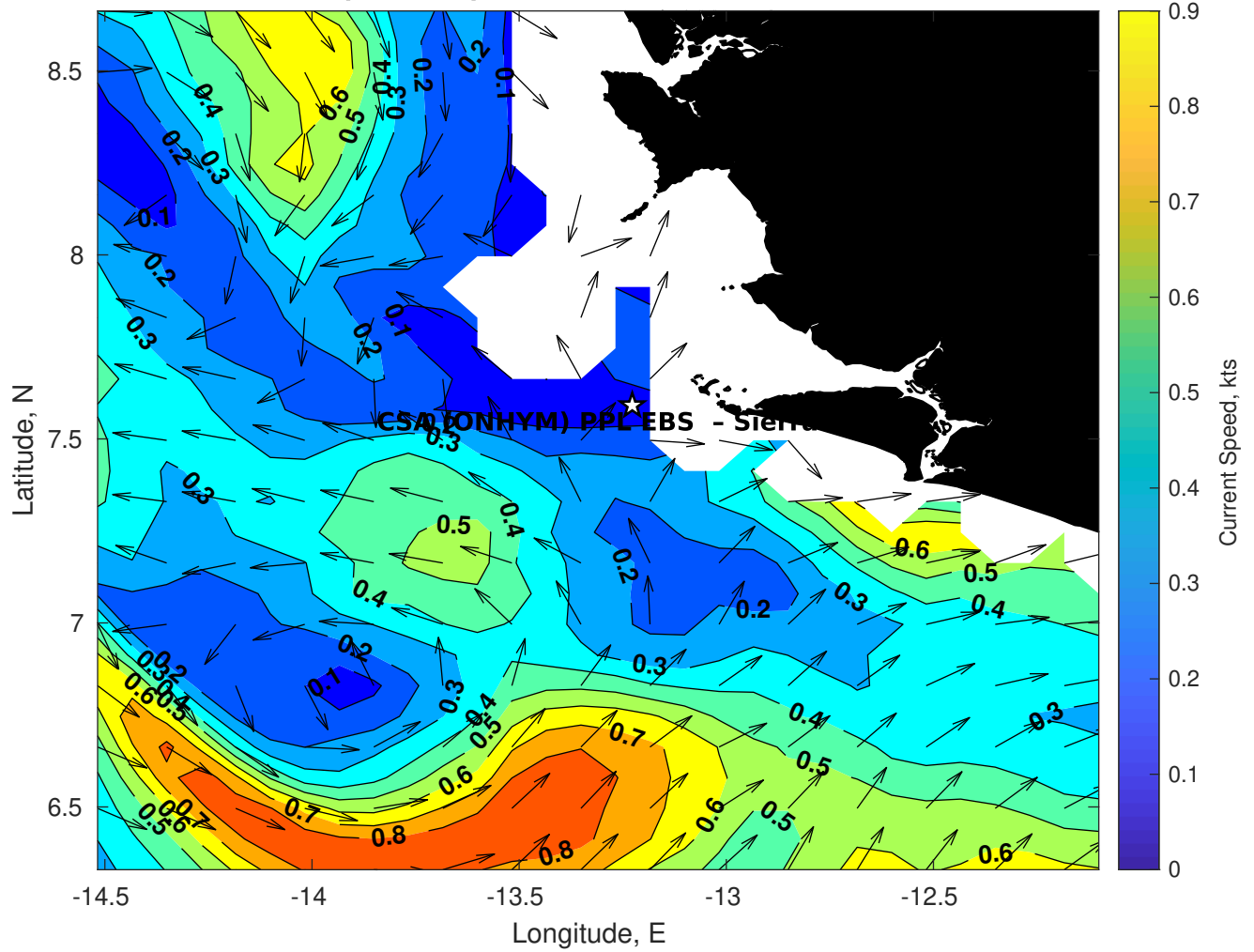
**Wave Period (sec) for CSA (ONHYM) PPL EBS - Sierra Leone at 23-Mar-2025 09:00:00**



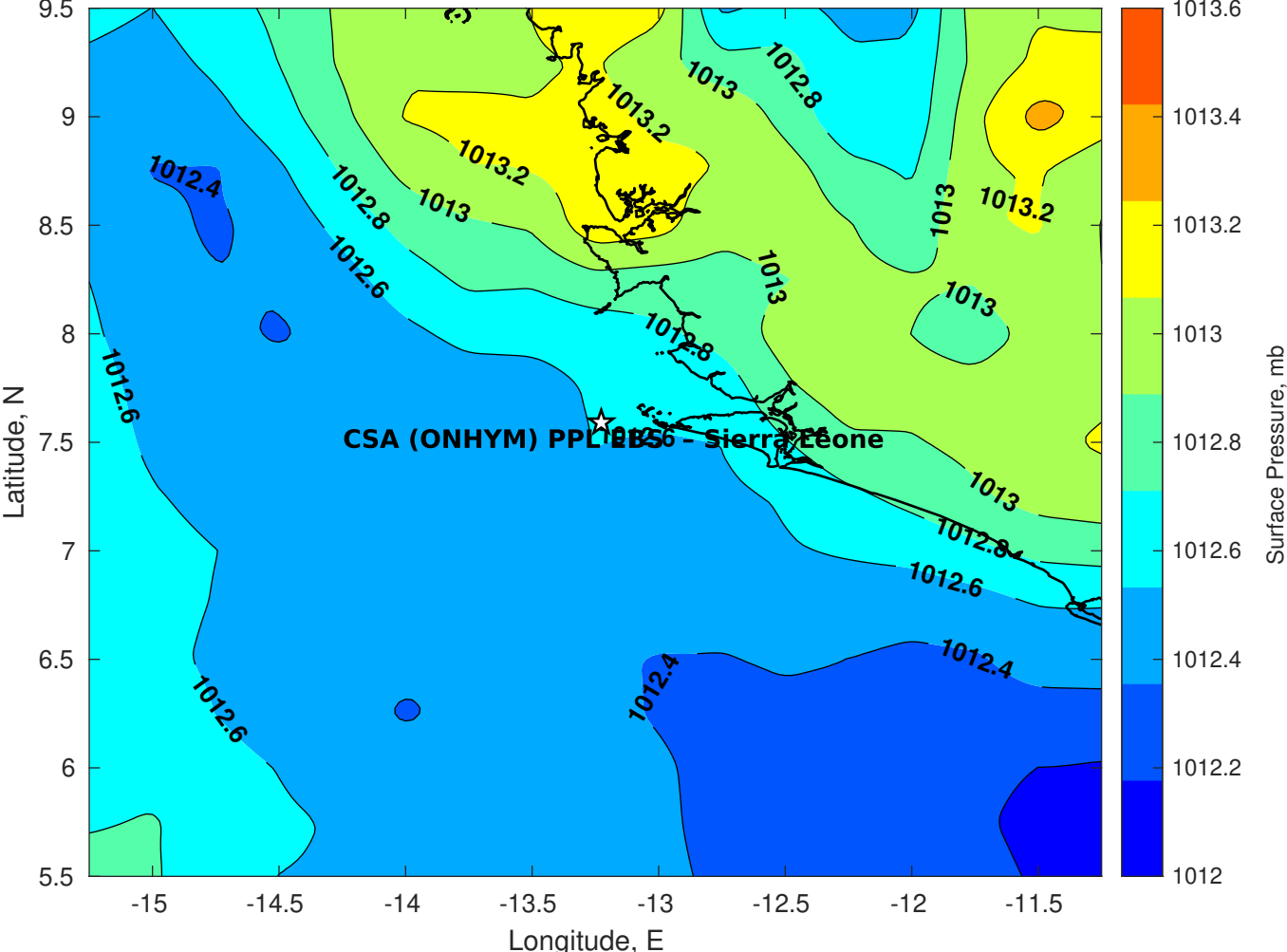
**Winds (kts) for CSA (ONHYM) PPL EBS - Sierra Leone at 23-Mar-2025 09:00:00**



**Surface Currents for CSA (ONHYM) PPL EBS - Sierra Leone at 22-Mar-2025 00:00:00**

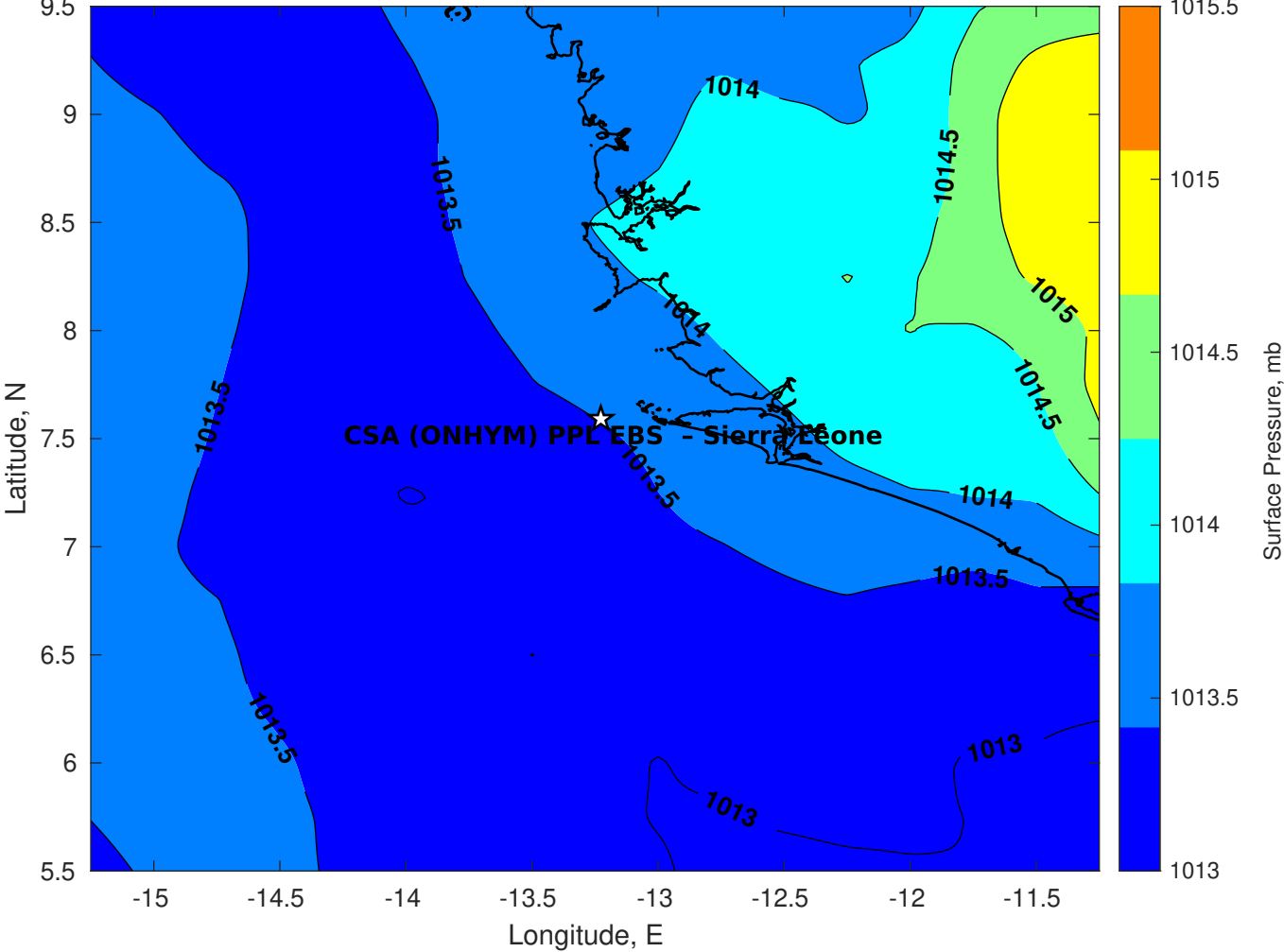


Surface Pressure (mb) for CSA (ONHYM) PPL EBS - Sierra Leone at 23-Mar-2025 00:00:00

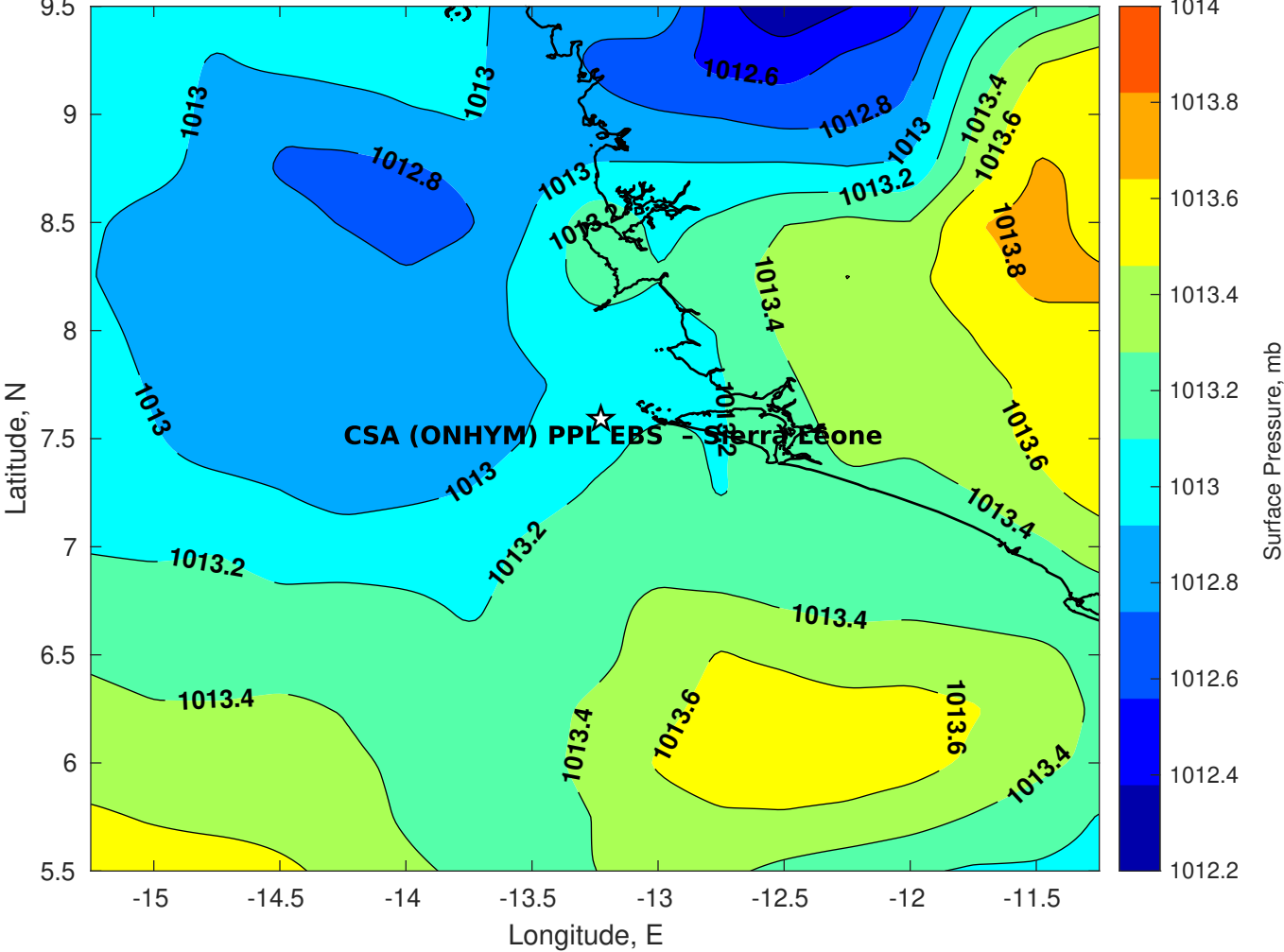




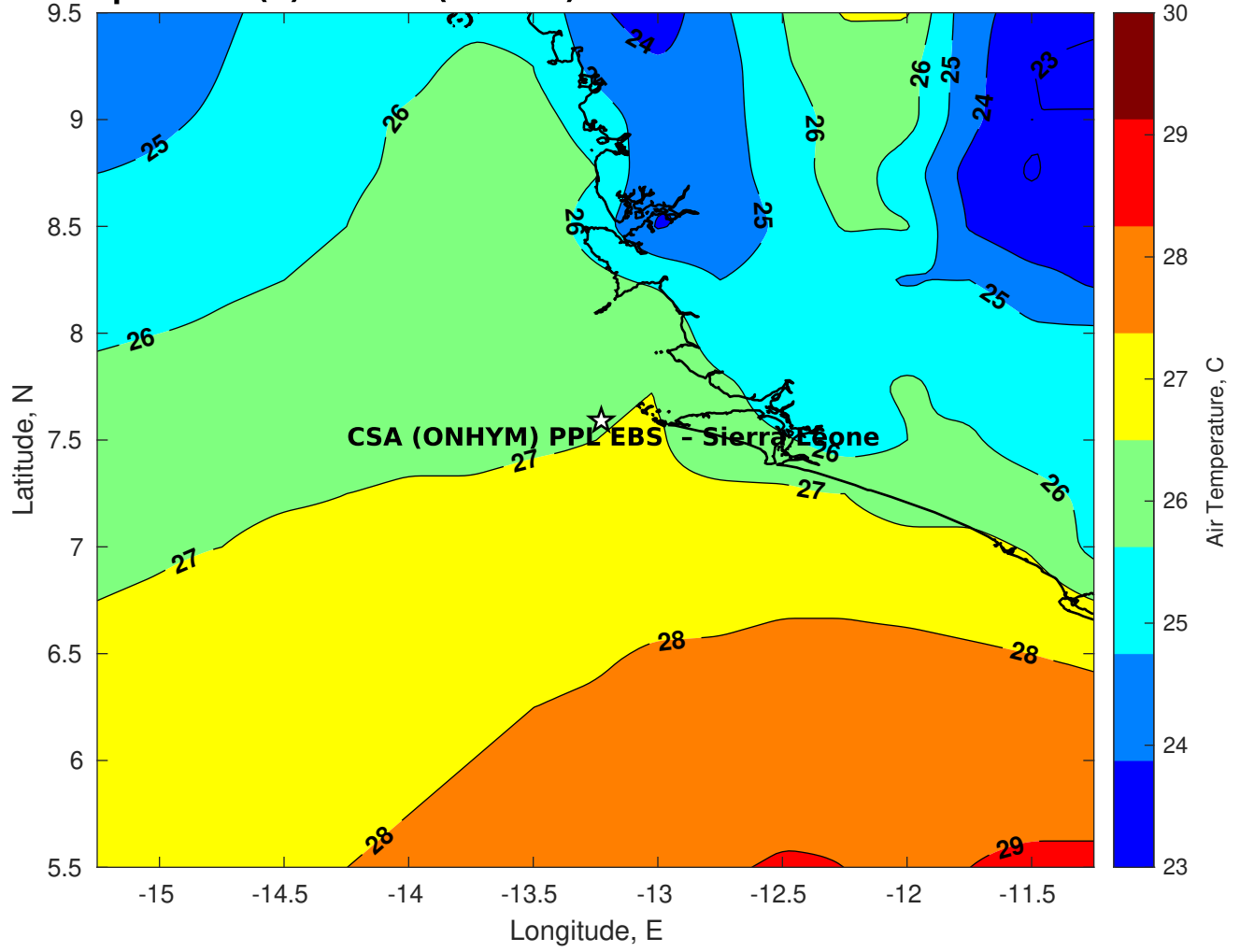
Surface Pressure (mb) for CSA (ONHYM) PPL EBS - Sierra Leone at 24-Mar-2025 00:00:00



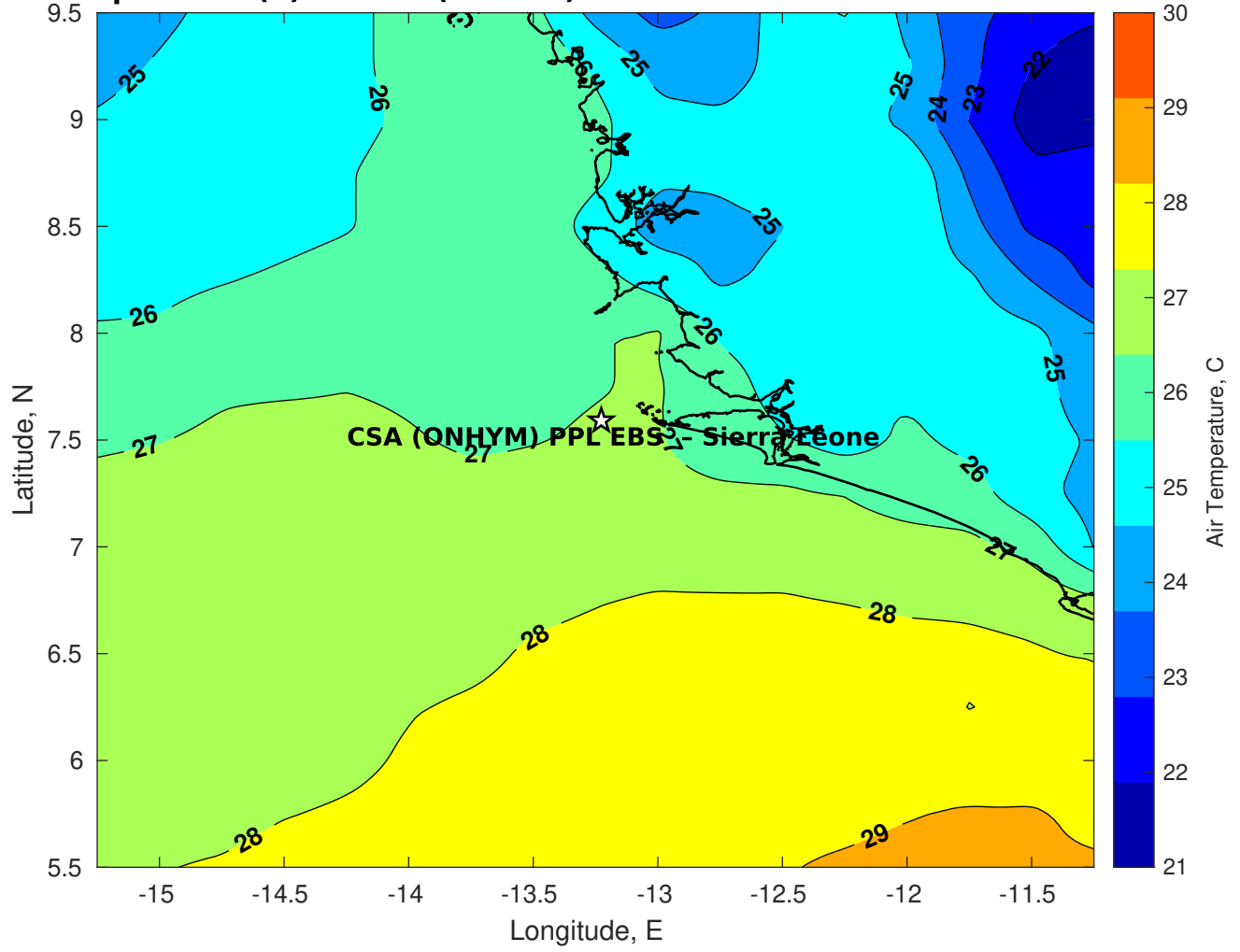
Surface Pressure (mb) for CSA (ONHYM) PPL EBS - Sierra Leone at 25-Mar-2025 00:00:00



**Air Temperature (C) for CSA (ONHYM) PPL EBS - Sierra Leone at 23-Mar-2025**



**Air Temperature (C) for CSA (ONHYM) PPL EBS - Sierra Leone at 23-Mar-2025**



**Air Temperature (C) for CSA (ONHYM) PPL EBS - Sierra Leone at 23-Mar-2025**

