

\*\*\*\*\*

Marine Weather Forecast for CTI Enbridge Kaskida & Tiber PPL Geotechnical  
Forecast valid as of 24-Mar-2025 0800 GMT

\*\*\*\*\*

All times are local.

Today

Winds: NE, 5-10 kts.  
Waves: NE, 3-4 feet, 5-6 sec.  
No currents available.

Tonight

Winds: E, 5-10 kts.  
Waves: NE, 2-3 feet, 5-6 sec.  
No currents available.

Tuesday

Winds: E, 5-10 kts.  
Waves: NE, 2-3 feet, 5-6 sec.  
No currents available.

Tuesday Night

Winds: E, 5-10 kts.  
Waves: NE, 1-2 feet, 6-7 sec.  
No currents available.

Wednesday

Winds: E, 10-15 kts.  
Waves: NE, 2-3 feet, 6-7 sec.  
No currents available.

Wednesday Night

Winds: E, 15-20 kts.  
Waves: E, 3-4 feet, 4-5 sec.  
No currents available.

Thursday

Winds: NE, 15-20 kts.  
Waves: NE, 5-6 feet, 6-7 sec.  
No currents available.

Thursday Night

Winds: NE, 20-25 kts.  
Waves: NE, 6-7 feet, 6-7 sec.  
No currents available.

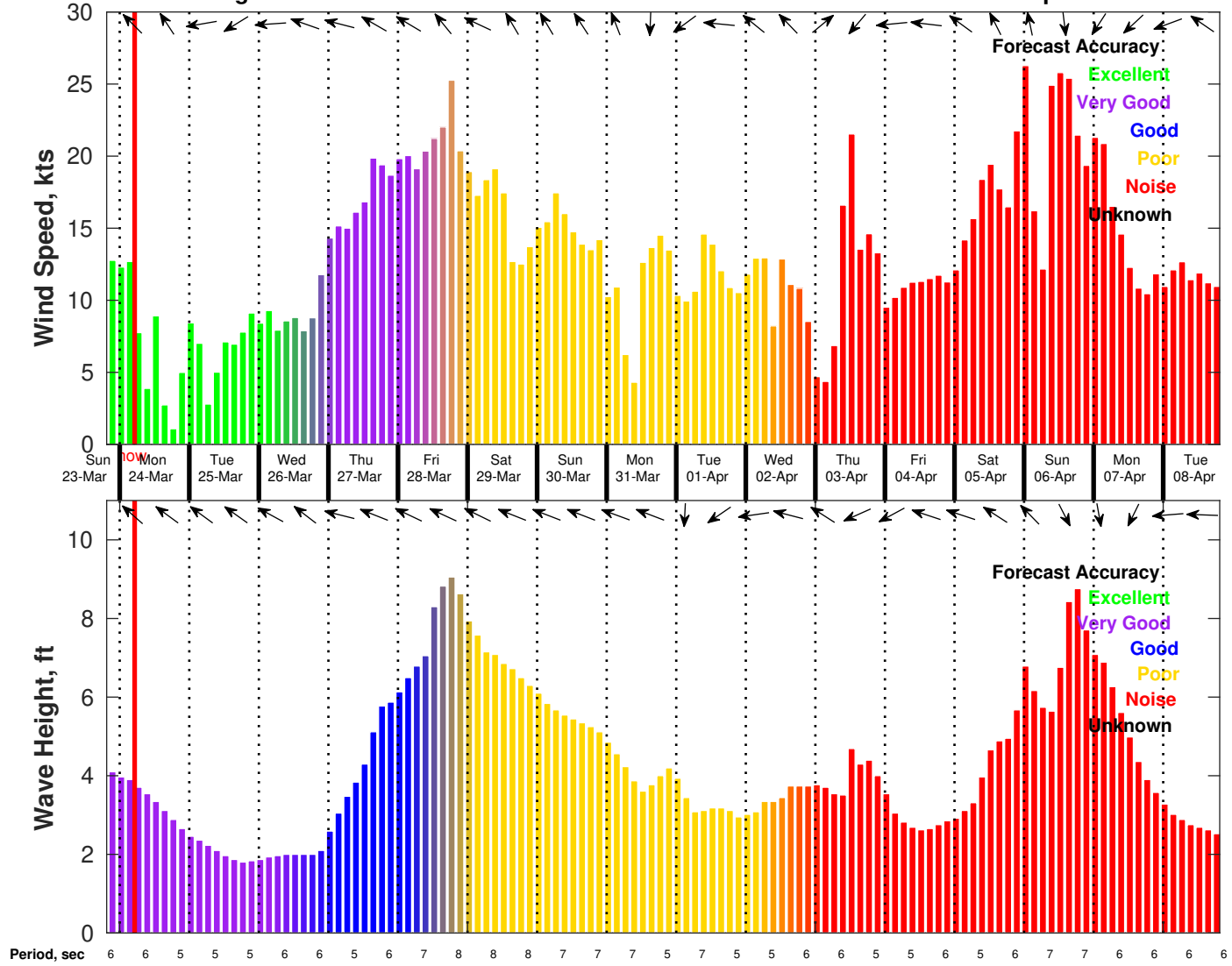
Friday

Winds: NE, 25-30 kts.  
Waves: NE, 9-10 feet, 7-8 sec.  
No currents available.

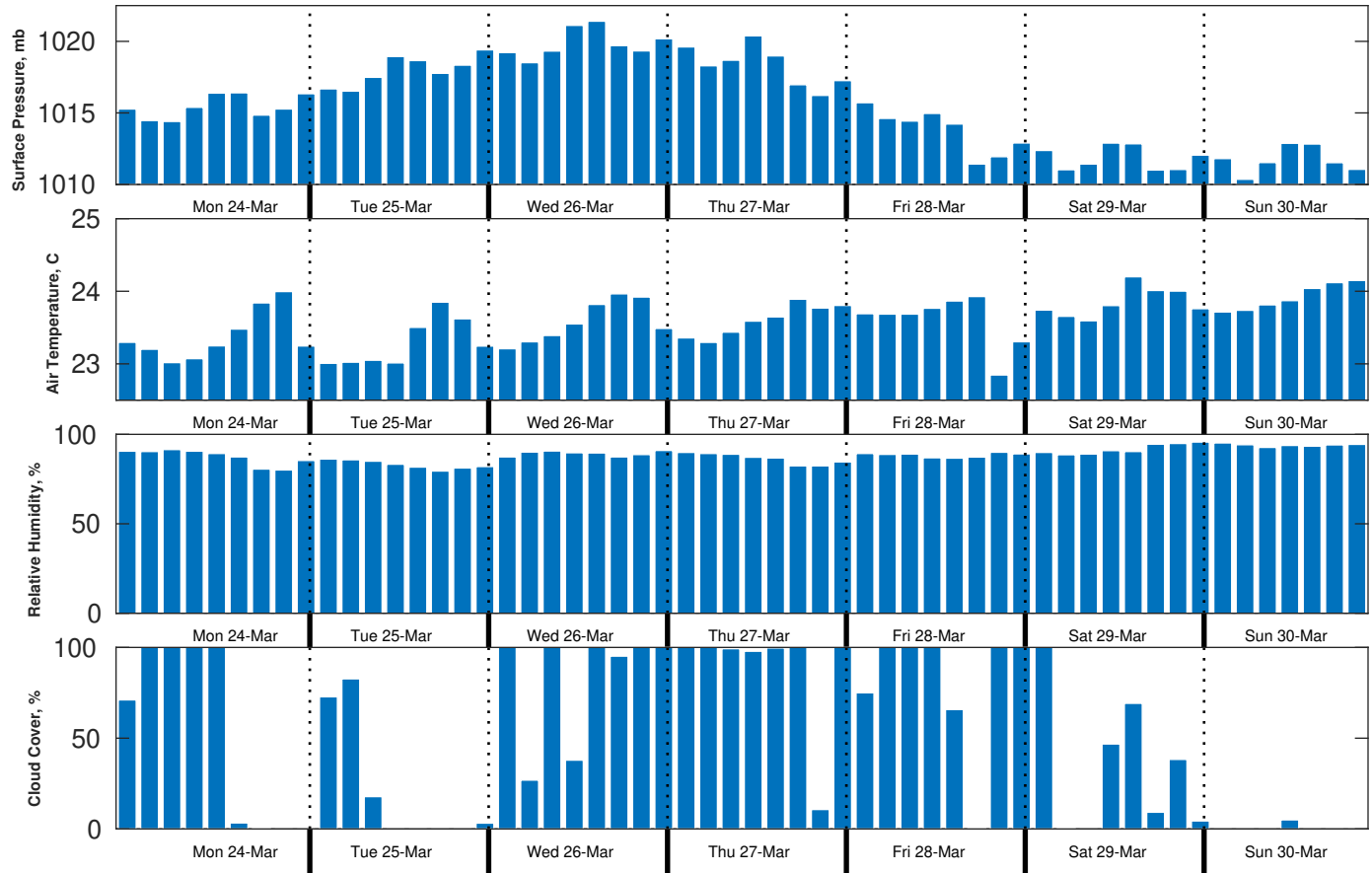
Friday Night

Winds: NE, 15-20 kts.  
Waves: NE, 7-8 feet, 7-8 sec.  
No currents available.

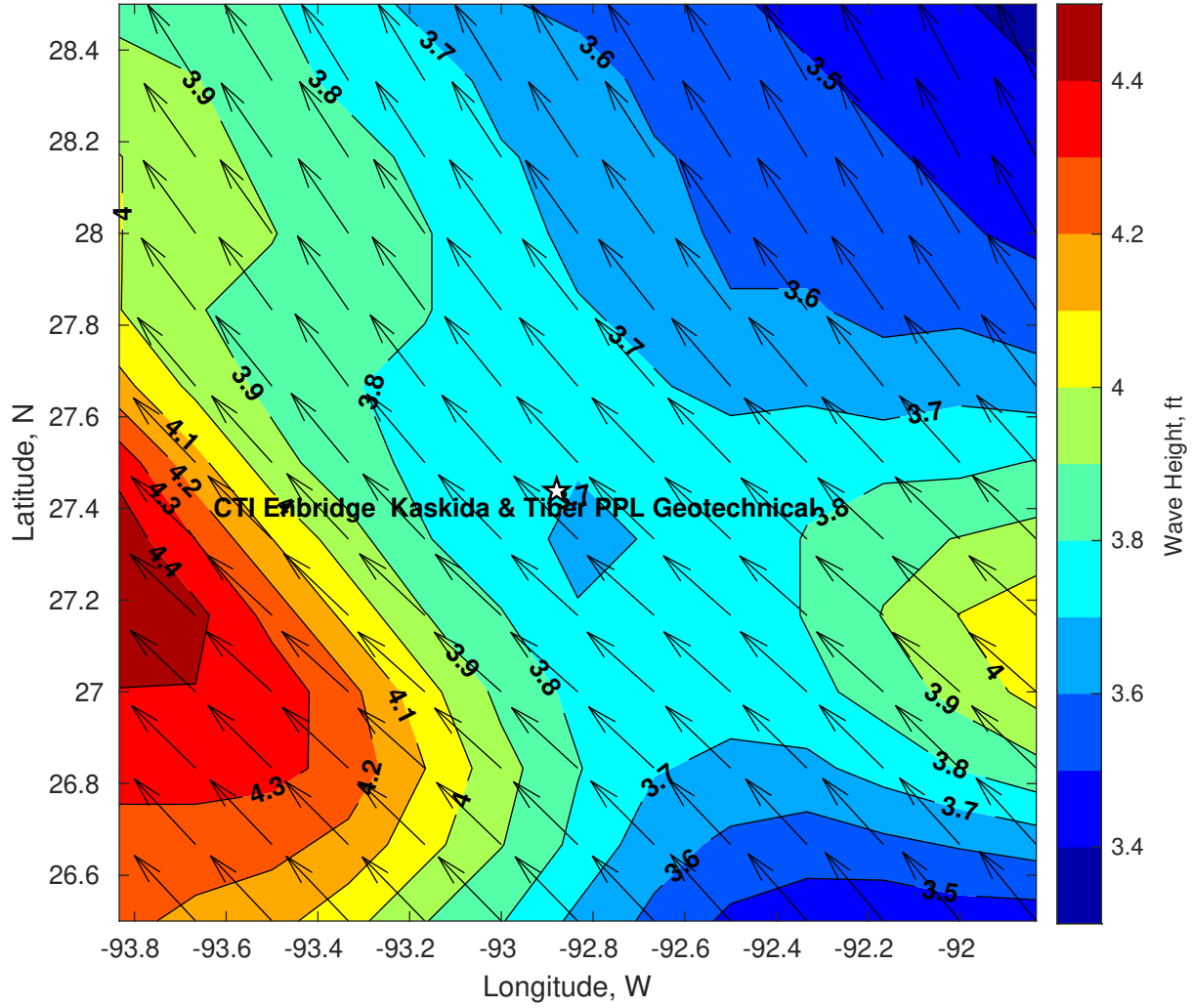
**Wind & Wave Forecast for CTI Enbridge Kaskida & Tiber PPL Geotechnical from 23-Mar-2025 20:00:00 to 08-Apr-2025 20:00:00**



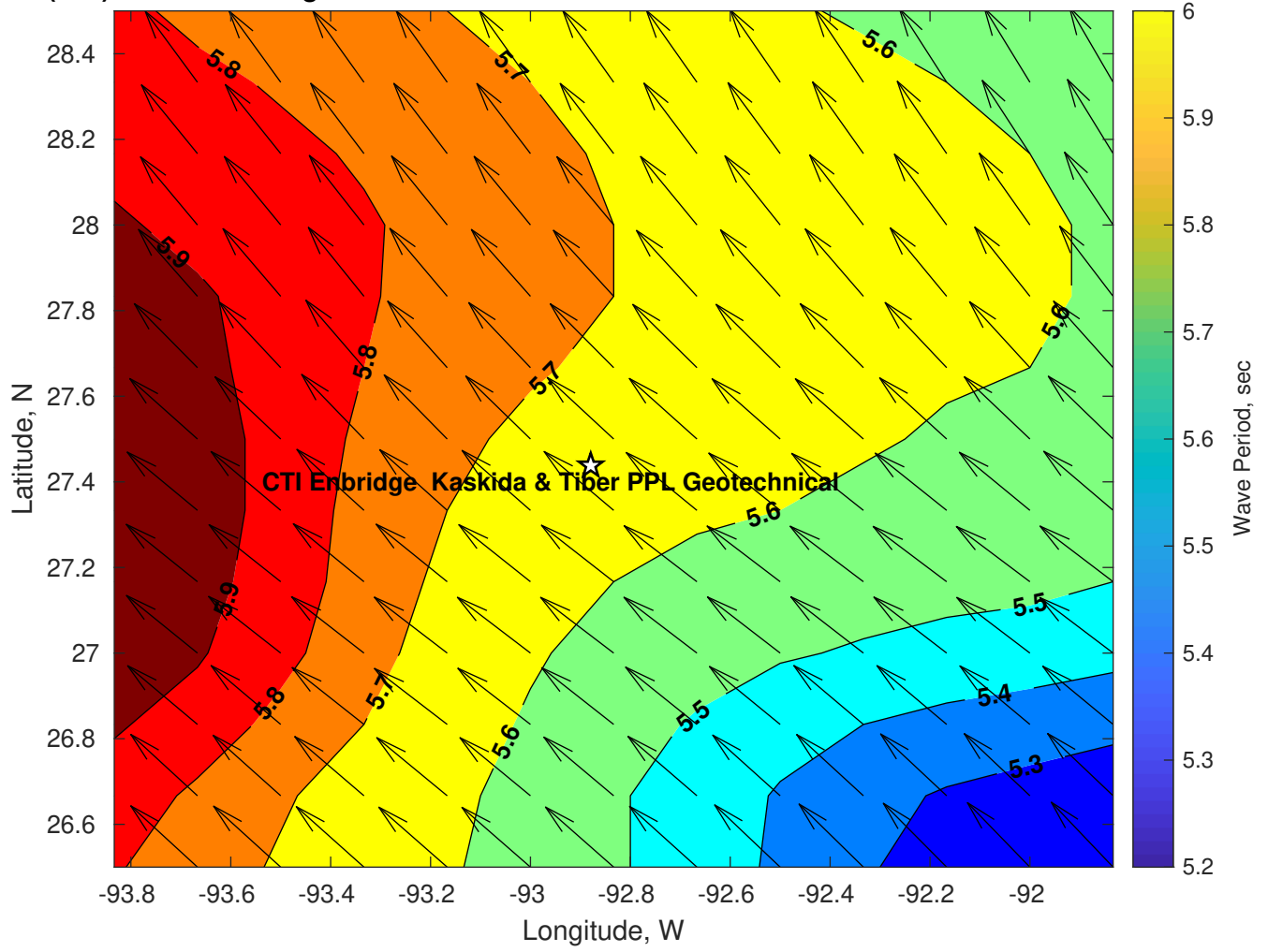
**Met Forecast for CTI Enbridge Kaskida & Tiber PPL Geotechnical from 24-Mar-2025 00:00:00 to 31-Mar-2025 00:00:00**



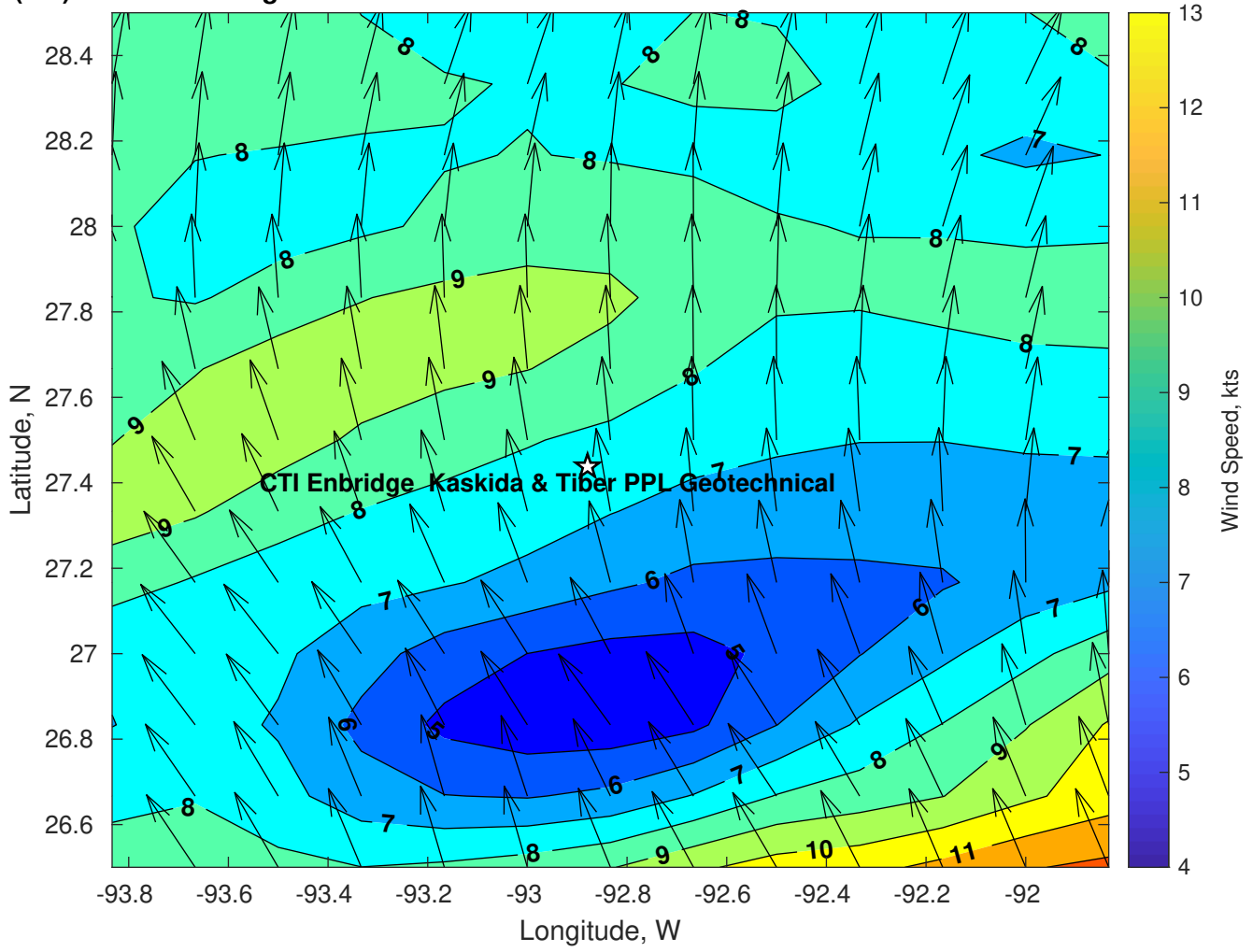
Wave Height (ft) for CTI Enbridge Kaskida & Tiber PPL Geotechnical at 24-Mar-2025 09:00:00



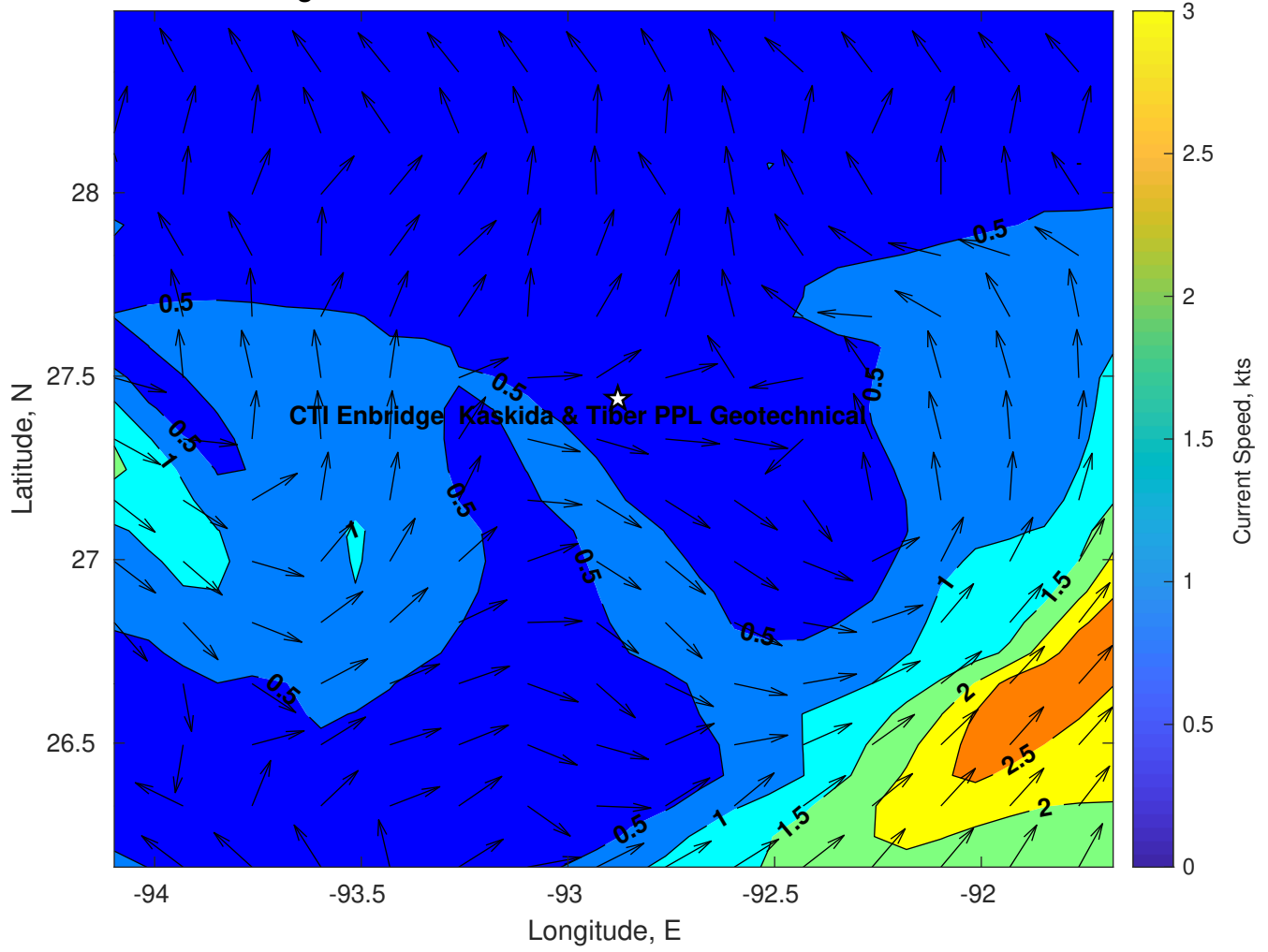
Wave Period (sec) for CTI Enbridge Kaskida & Tiber PPL Geotechnical at 24-Mar-2025 09:00:00



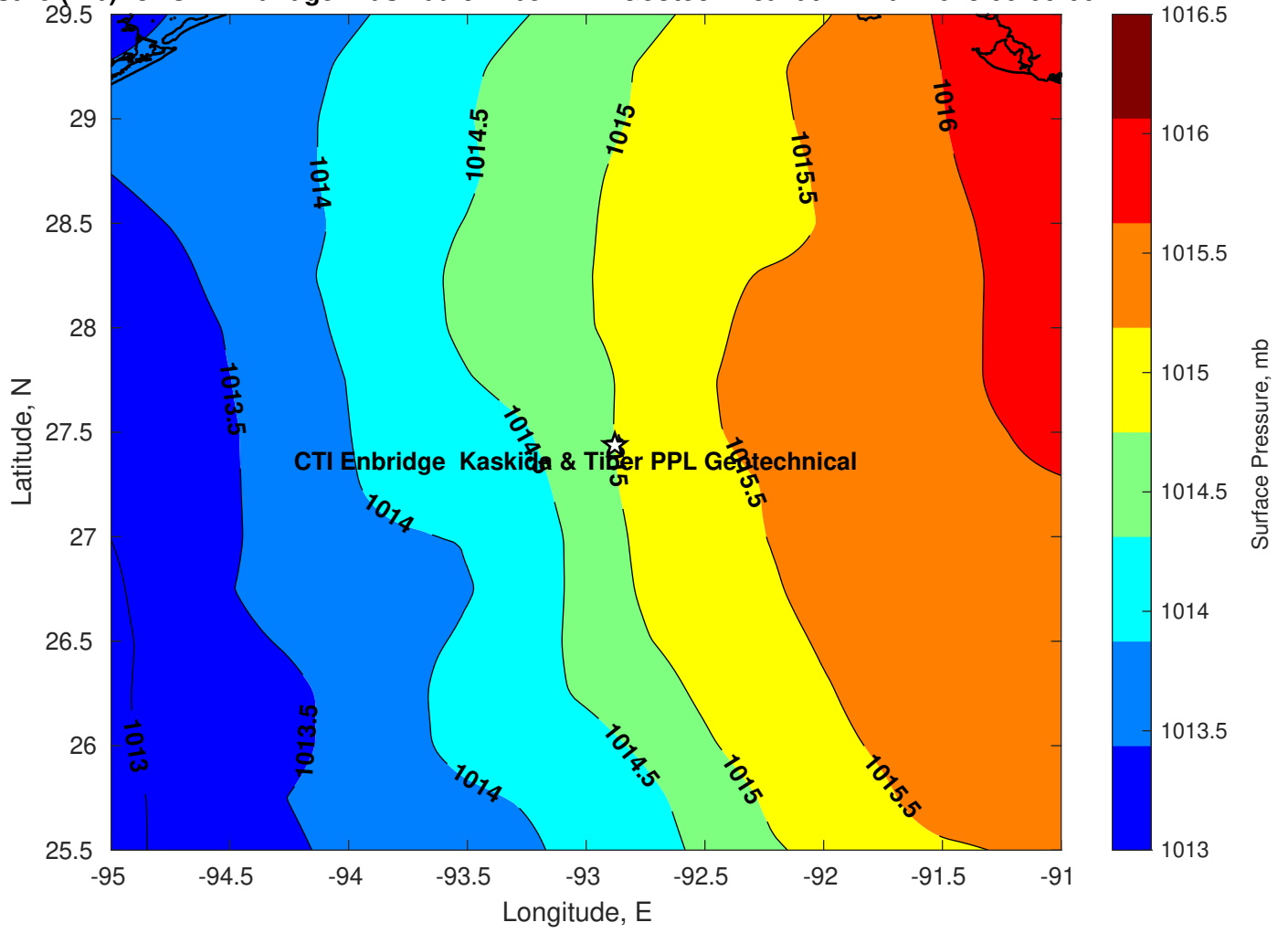
**Winds (kts) for CTI Enbridge Kaskida & Tiber PPL Geotechnical at 24-Mar-2025 09:00:00**



Surface Currents for CTI Enbridge Kaskida & Tiber PPL Geotechnical at 23-Mar-2025 00:00:00

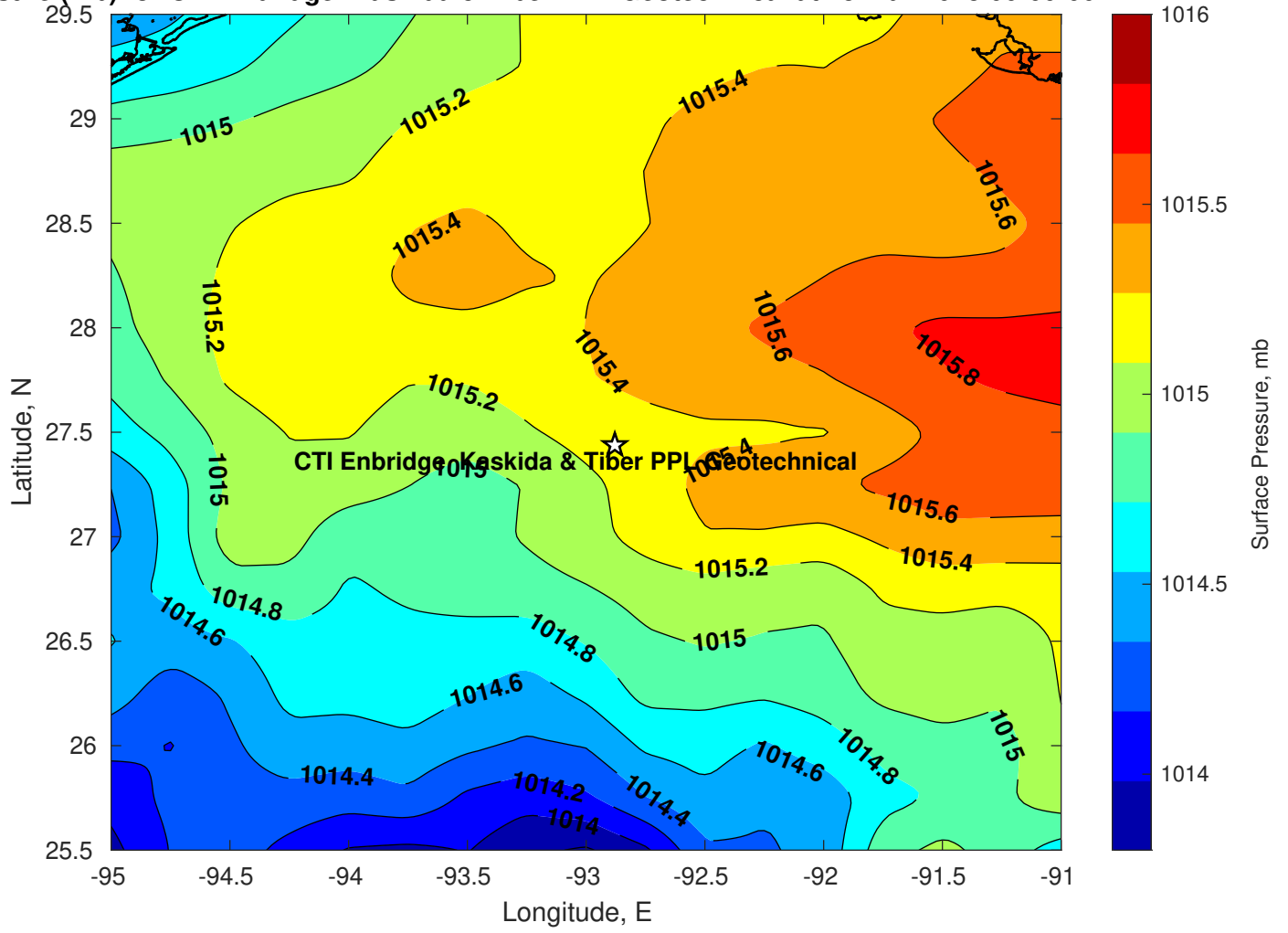


Surface Pressure (mb) for CTI Enbridge Kaskida & Tiber PPL Geotechnical at 24-Mar-2025 00:00:00

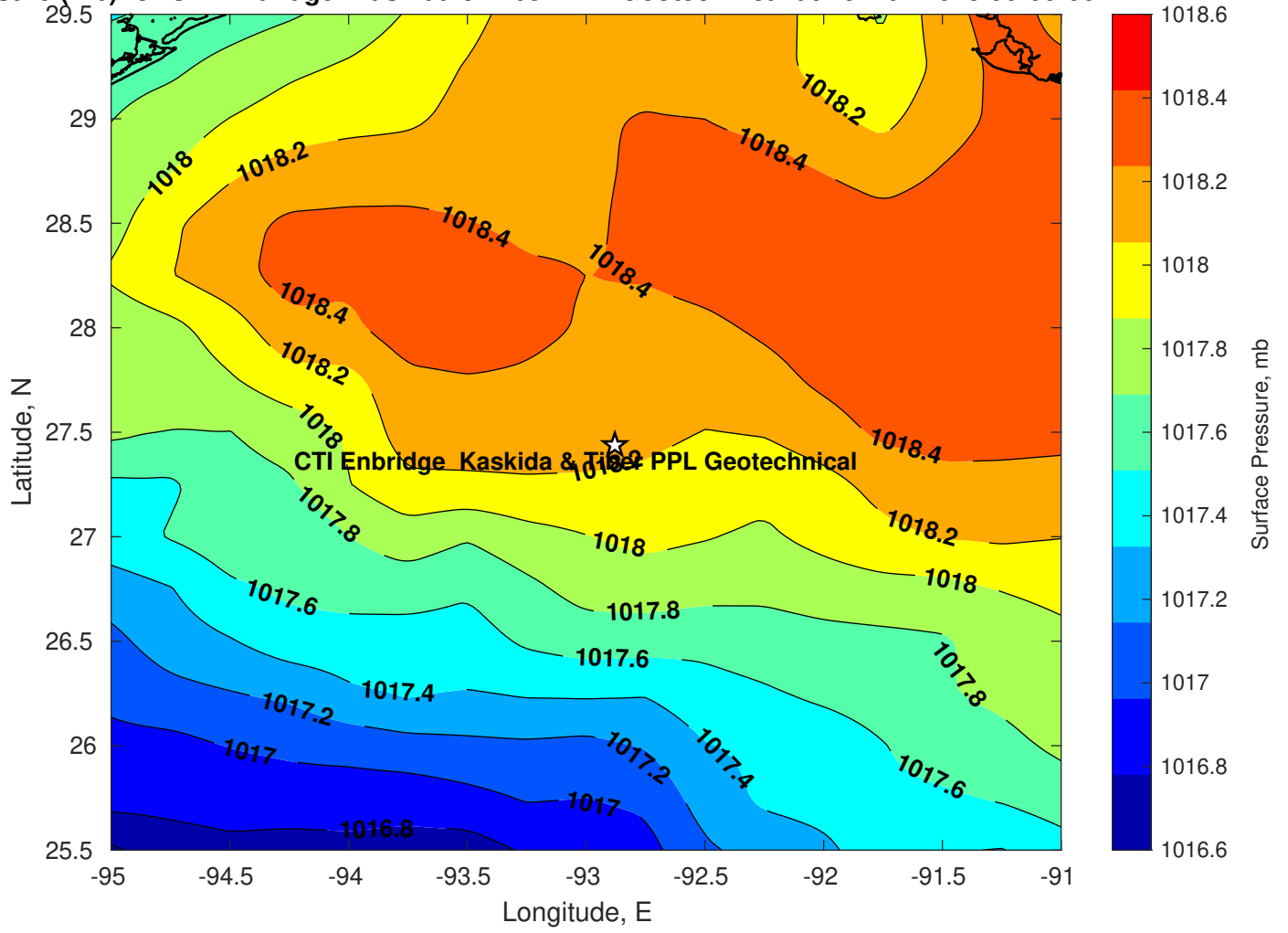




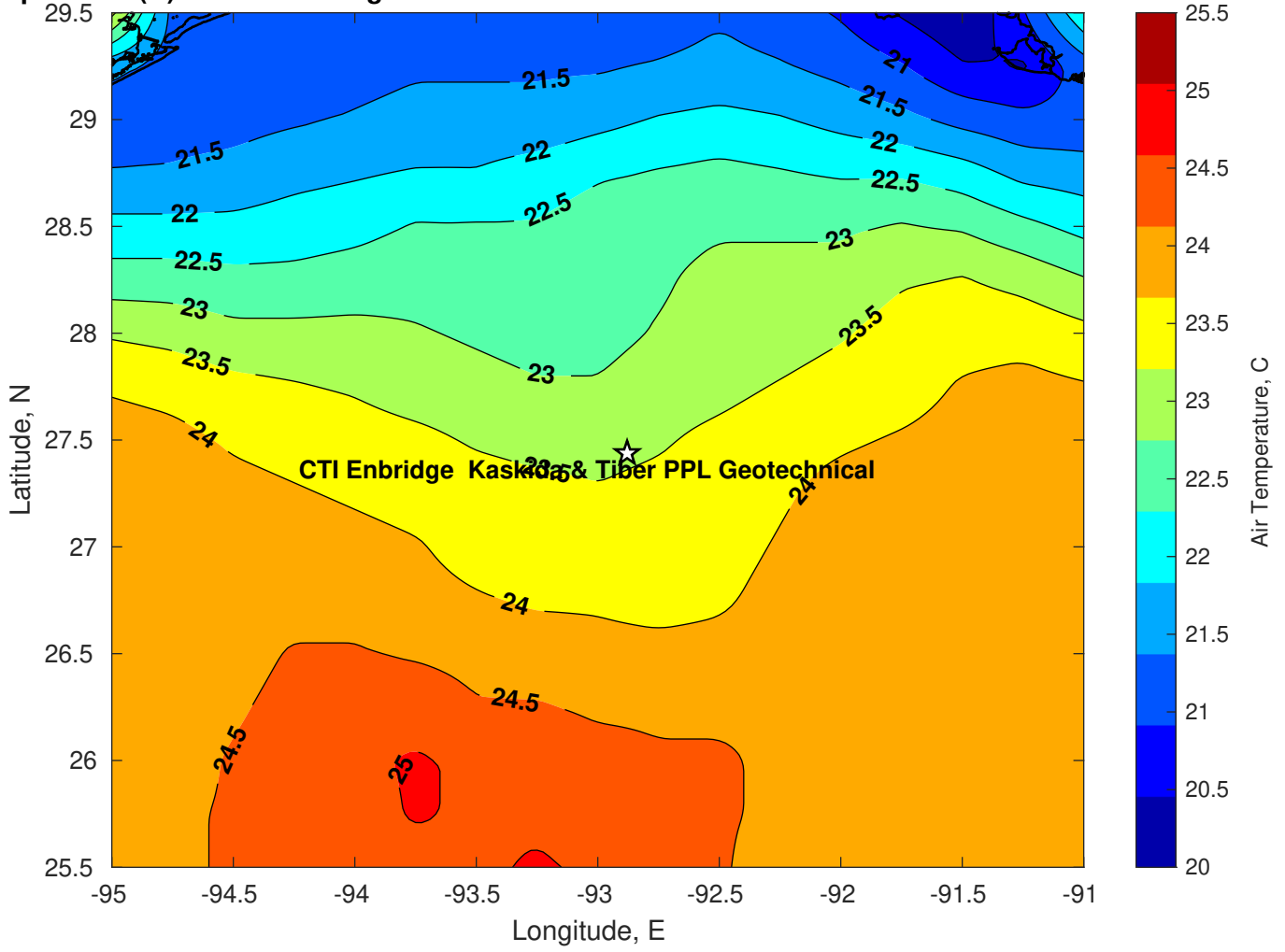
Surface Pressure (mb) for CTI Enbridge Kaskida & Tiber PPL Geotechnical at 25-Mar-2025 00:00:00



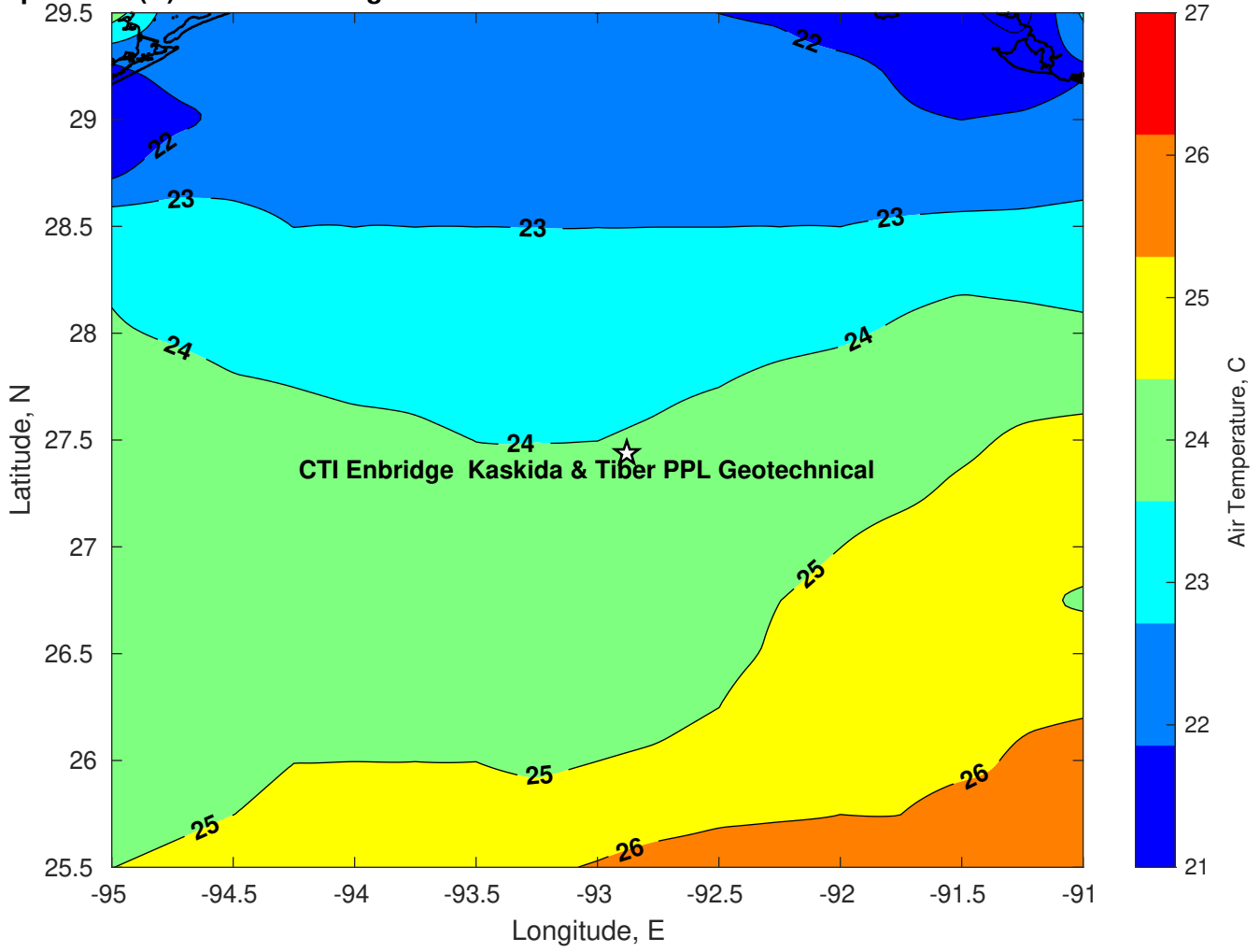
Surface Pressure (mb) for CTI Enbridge Kaskida & Tiber PPL Geotechnical at 26-Mar-2025 00:00:00



Air Temperature (C) for CTI Enbridge Kaskida & Tiber PPL Geotechnical at 24-Mar-2025



**Air Temperature (C) for CTI Enbridge Kaskida & Tiber PPL Geotechnical at 24-Mar-2025**



**Air Temperature (C) for CTI Enbridge Kaskida & Tiber PPL Geotechnical at 24-Mar-2025**

