

\*\*\*\*\*  
Marine Weather Forecast for TOTAL Namibia GTS  
Forecast valid as of 24-Mar-2025 0800 GMT  
\*\*\*\*\*

All times are local.

Today

Winds: NW, 10-15 kts.  
Waves: NW, 5-6 feet, 9-10 sec.  
No currents available.

Tonight

Winds: N, 10-15 kts.  
Waves: NW, 6-7 feet, 9-10 sec.  
No currents available.

Tuesday

Winds: N, 15-20 kts.  
Waves: NW, 6-7 feet, 9-10 sec.  
No currents available.

Tuesday Night

Winds: NE, 15-20 kts.  
Waves: NW, 6-7 feet, 9-10 sec.  
No currents available.

Wednesday

Winds: NE, 20-25 kts.  
Waves: N, 7-8 feet, 8-9 sec.  
No currents available.

Wednesday Night

Winds: NE, 20-25 kts.  
Waves: N, 7-8 feet, 6-7 sec.  
No currents available.

Thursday

Winds: NE, 20-25 kts.  
Waves: N, 7-8 feet, 7-8 sec.  
No currents available.

Thursday Night

Winds: NE, 15-20 kts.  
Waves: N, 6-7 feet, 7-8 sec.  
No currents available.

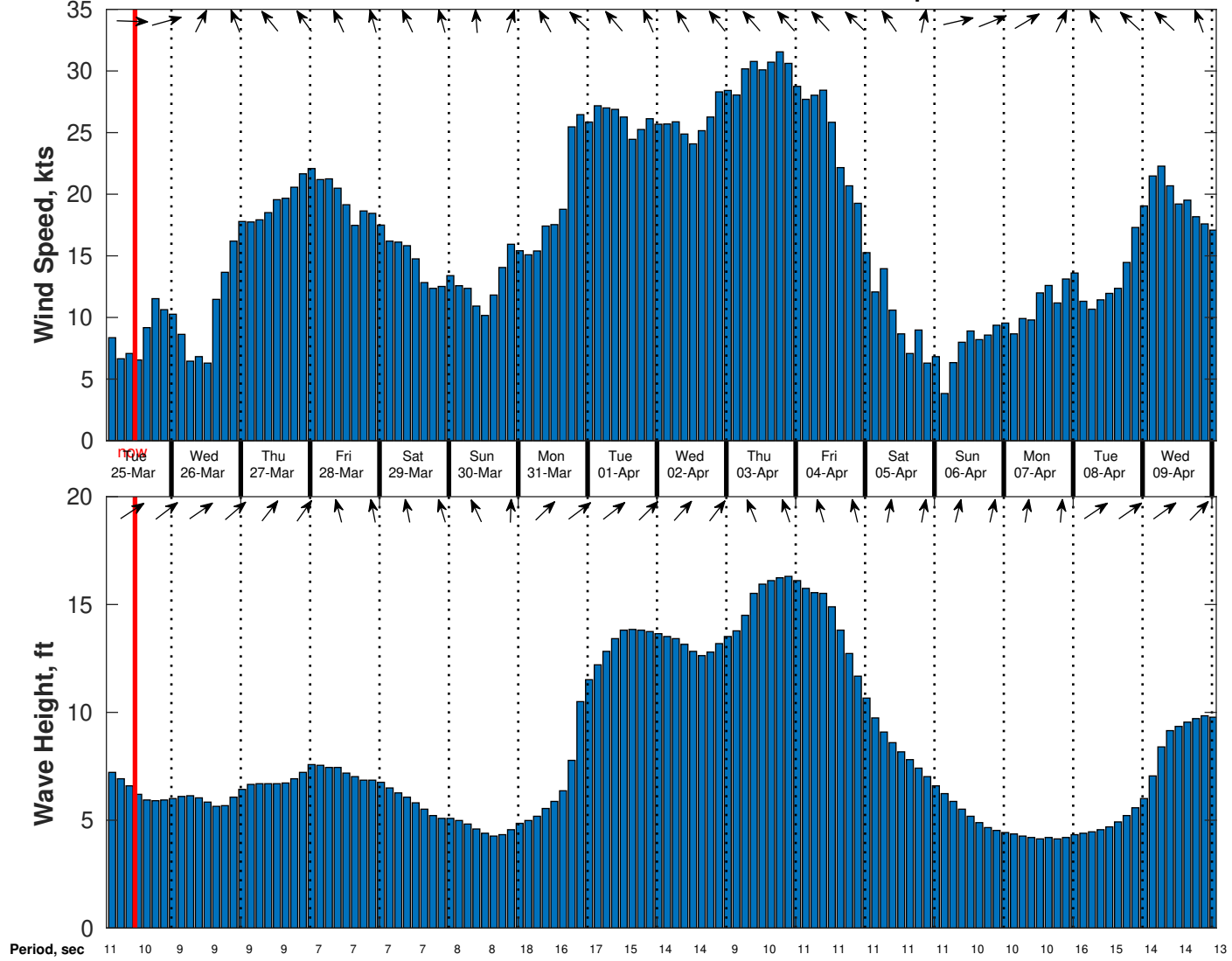
Friday

Winds: N, 15-20 kts.  
Waves: N, 6-7 feet, 8-9 sec.  
No currents available.

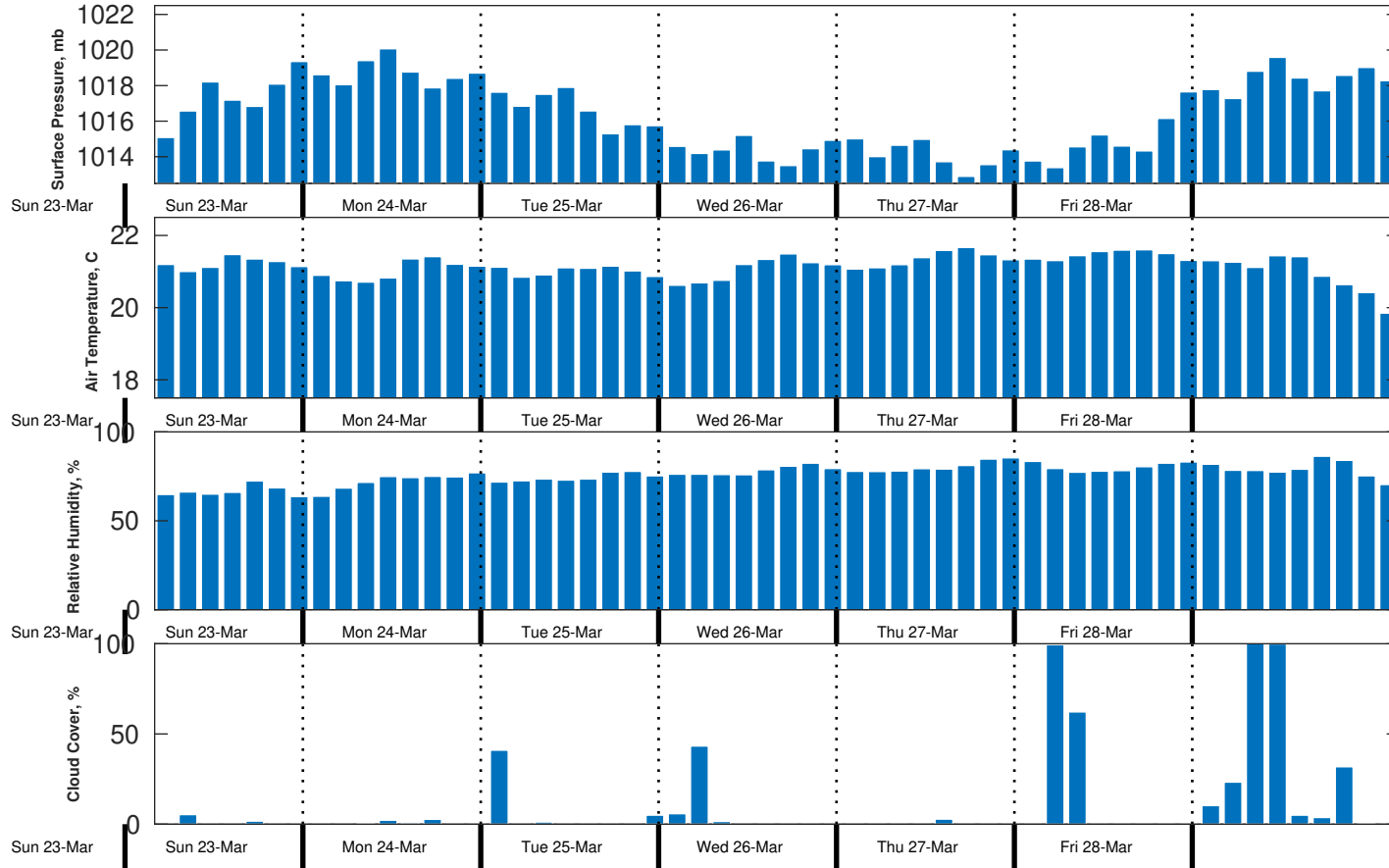
Friday Night

Winds: N, 10-15 kts.  
Waves: N, 5-6 feet, 8-9 sec.  
No currents available.

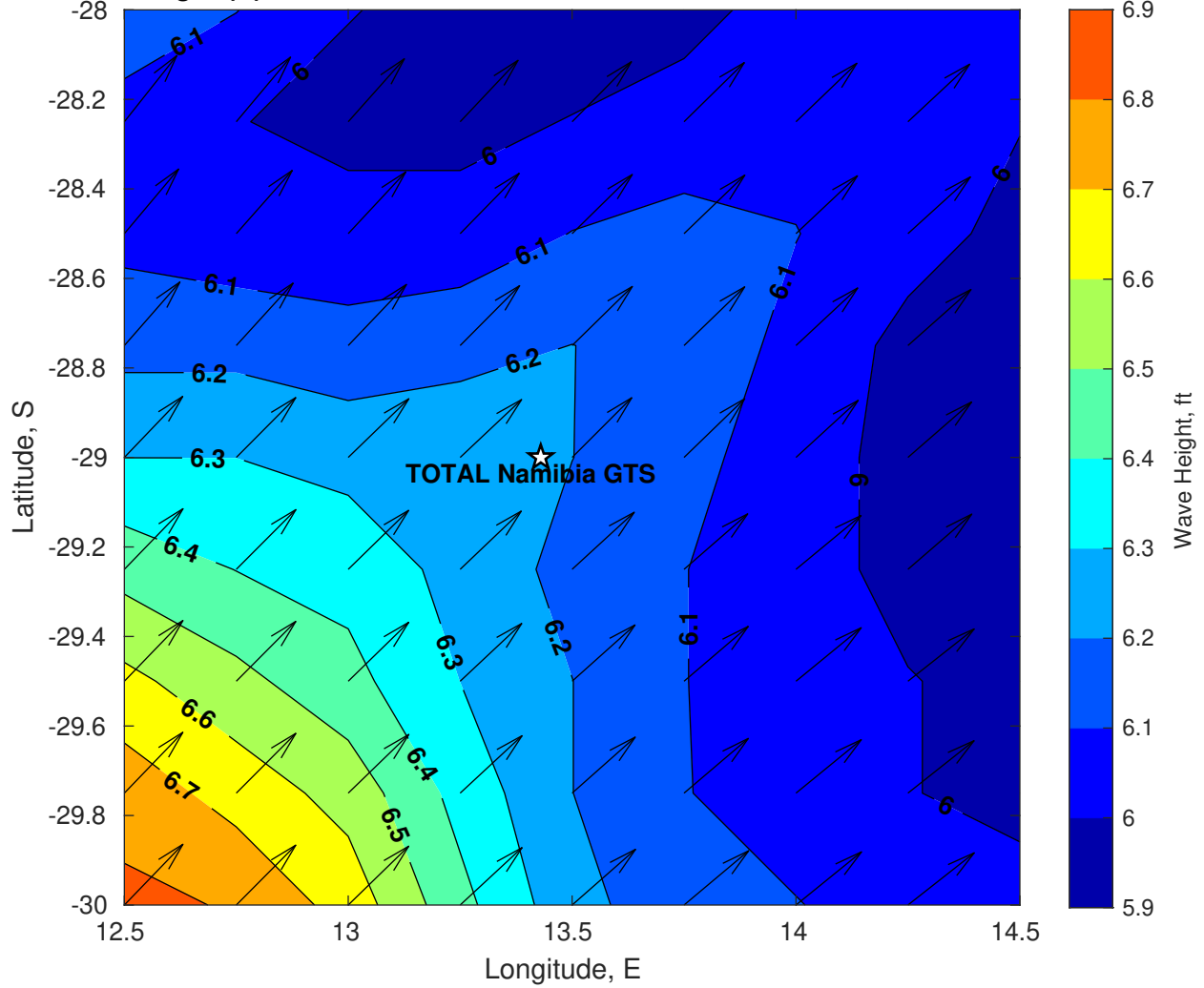
Wind & Wave Forecast for TOTAL Namibia GTS from 24-Mar-2025 02:00:00 to 09-Apr-2025 02:00:00



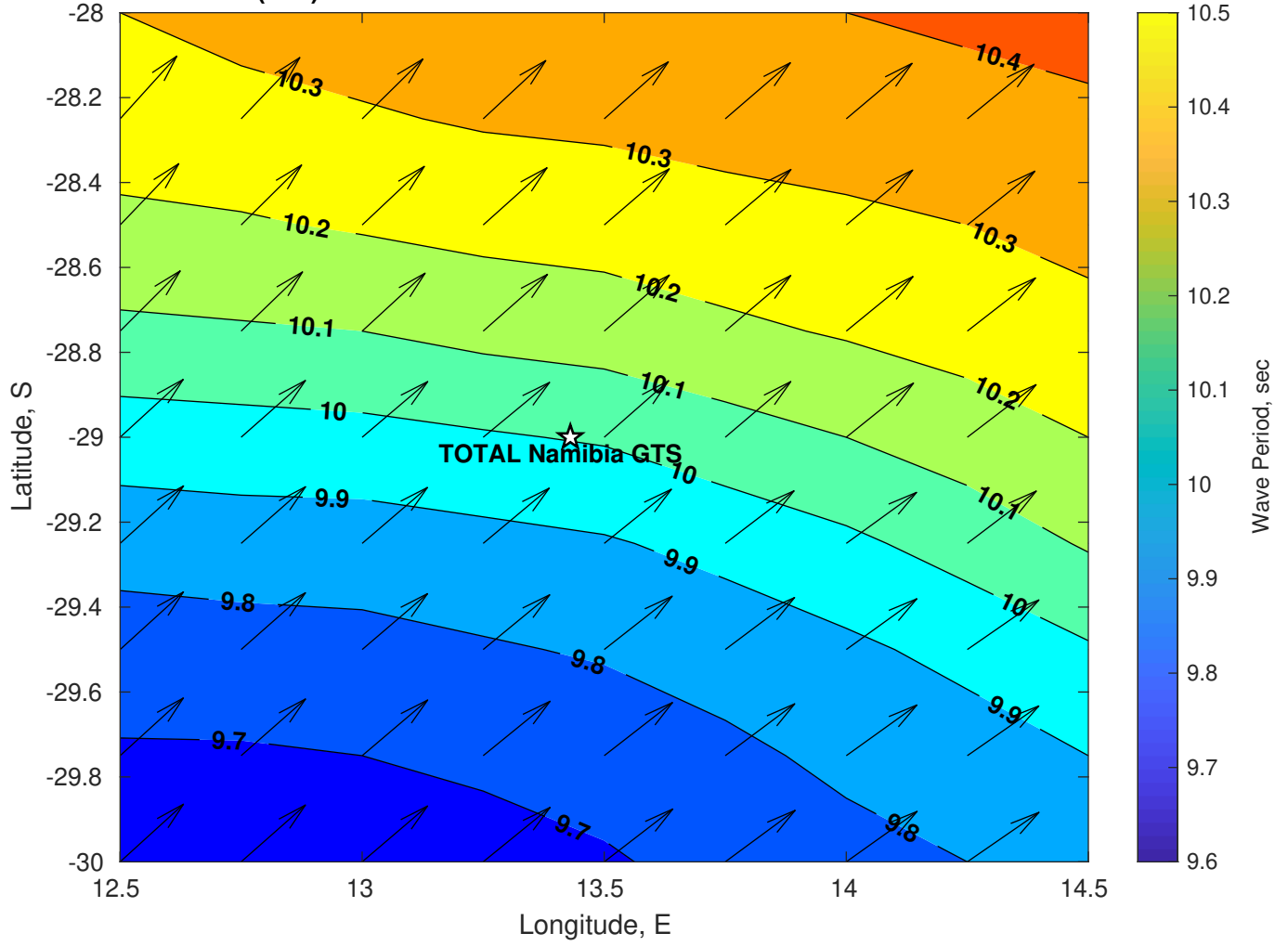
### Met Forecast for TOTAL Namibia GTS from 24-Mar-2025 00:00:00 to 31-Mar-2025 00:00:00



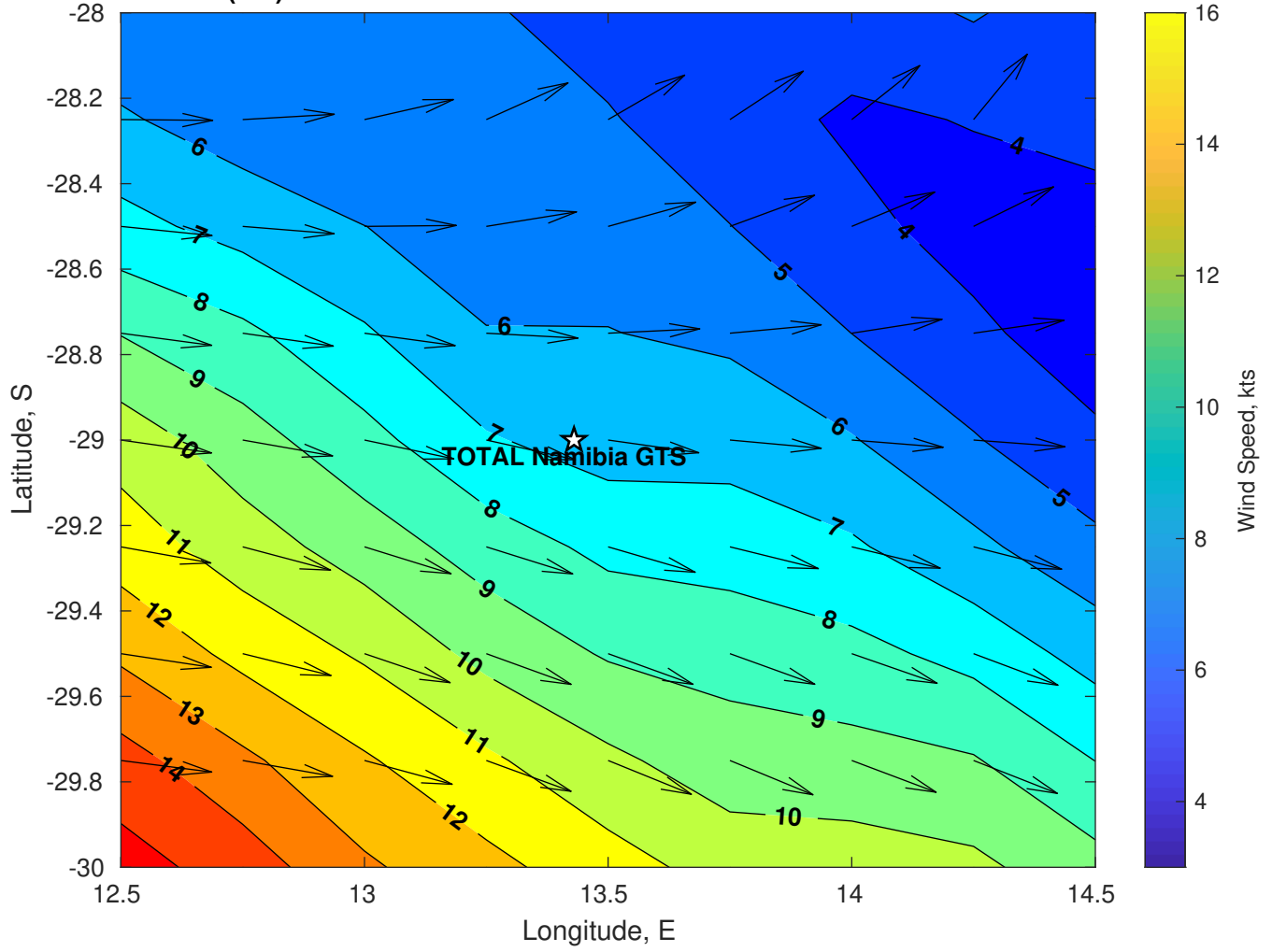
Wave Height (ft) for TOTAL Namibia GTS at 24-Mar-2025 09:00:00



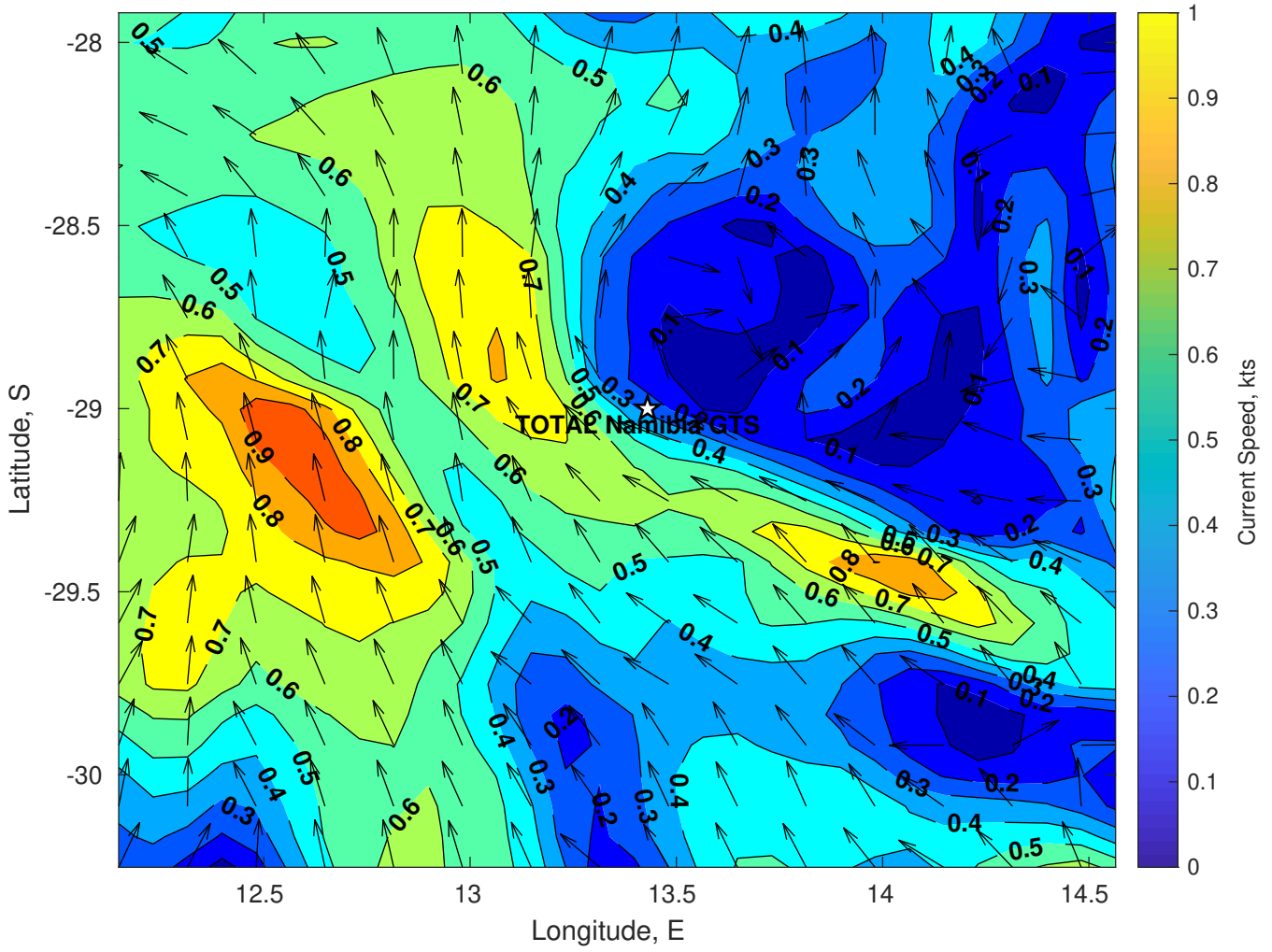
Wave Period (sec) for TOTAL Namibia GTS at 24-Mar-2025 09:00:00



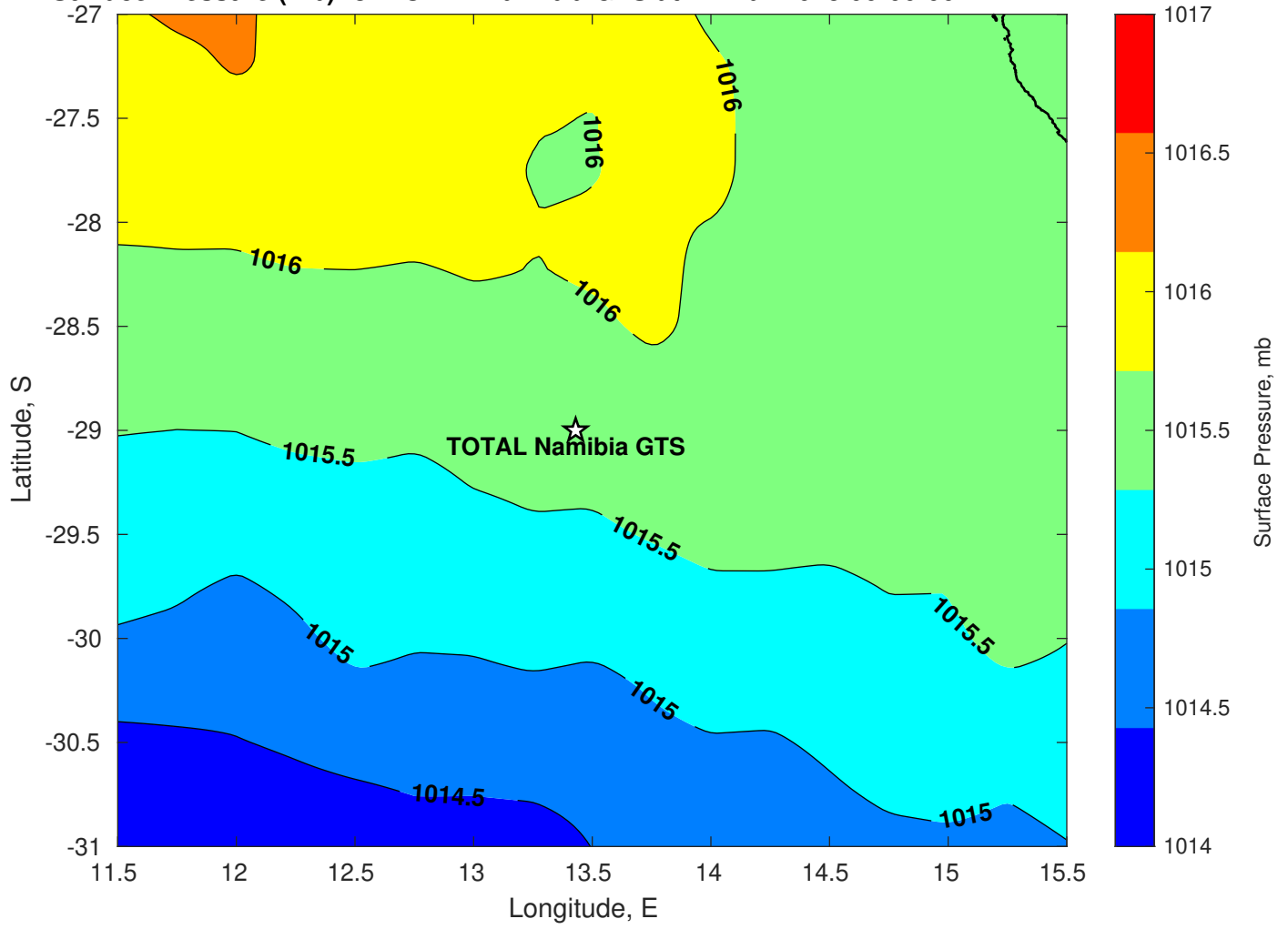
**Winds (kts) for TOTAL Namibia GTS at 24-Mar-2025 09:00:00**



Surface Currents for TOTAL Namibia GTS at 23-Mar-2025 00:00:00

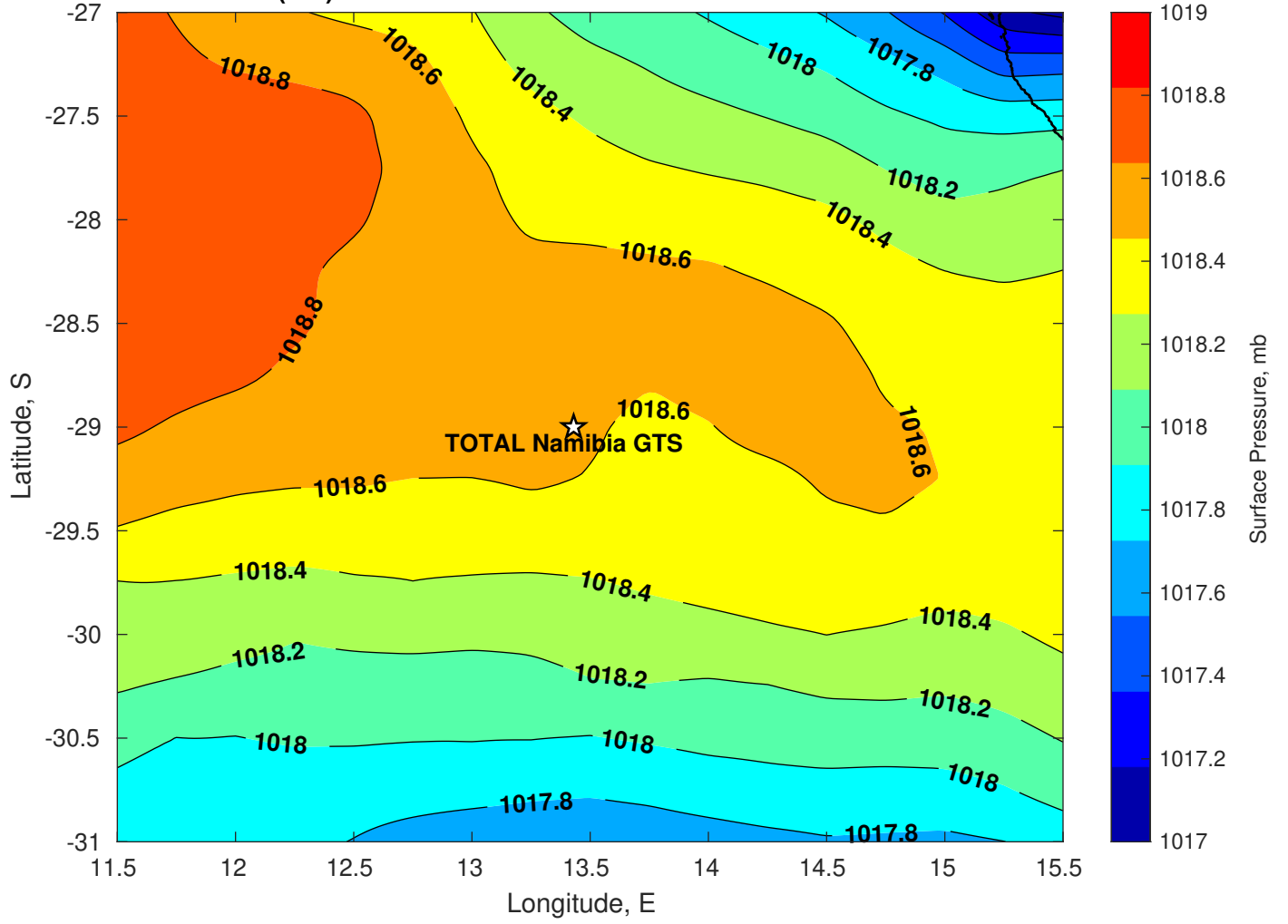


Surface Pressure (mb) for TOTAL Namibia GTS at 24-Mar-2025 00:00:00

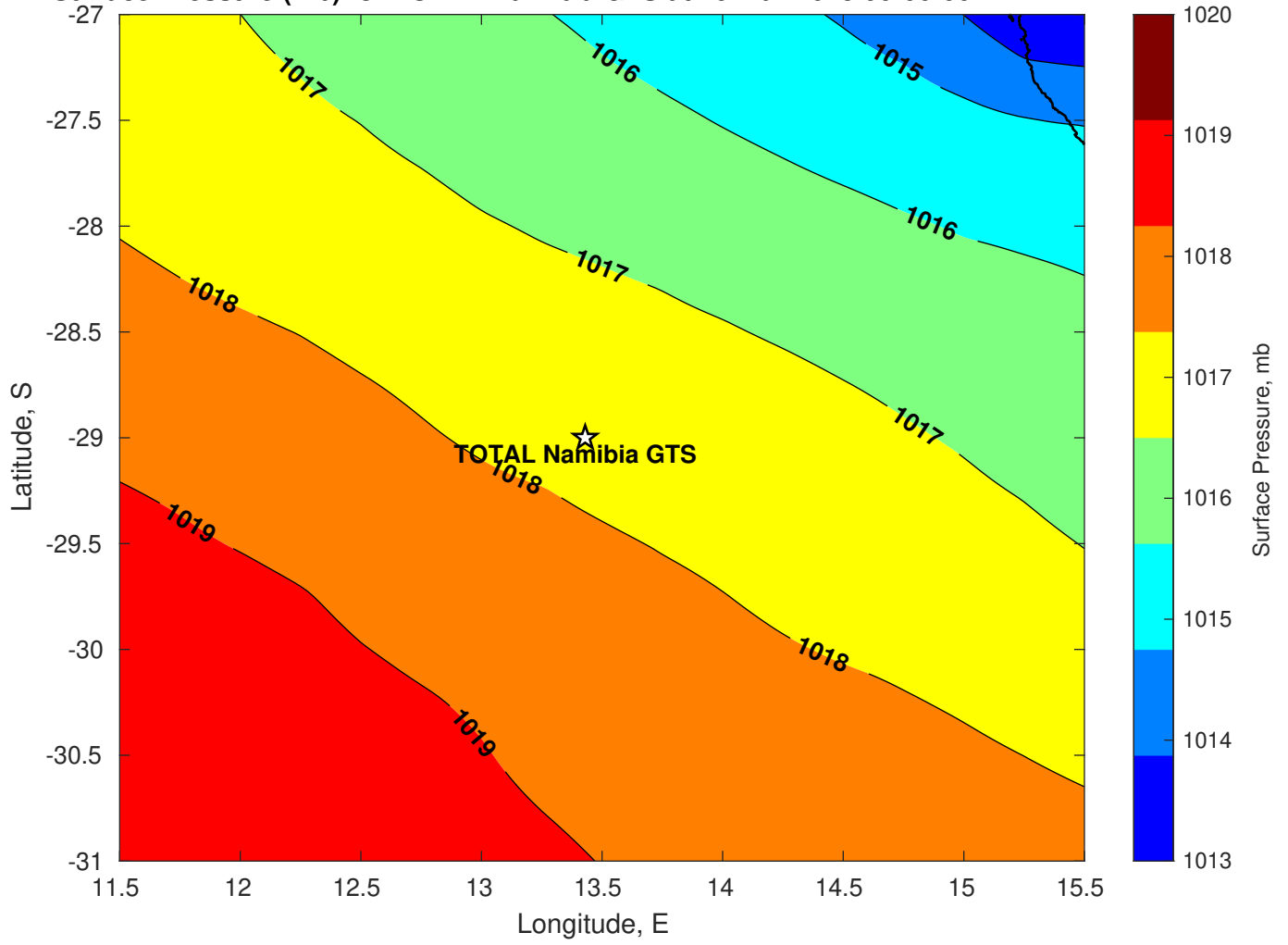




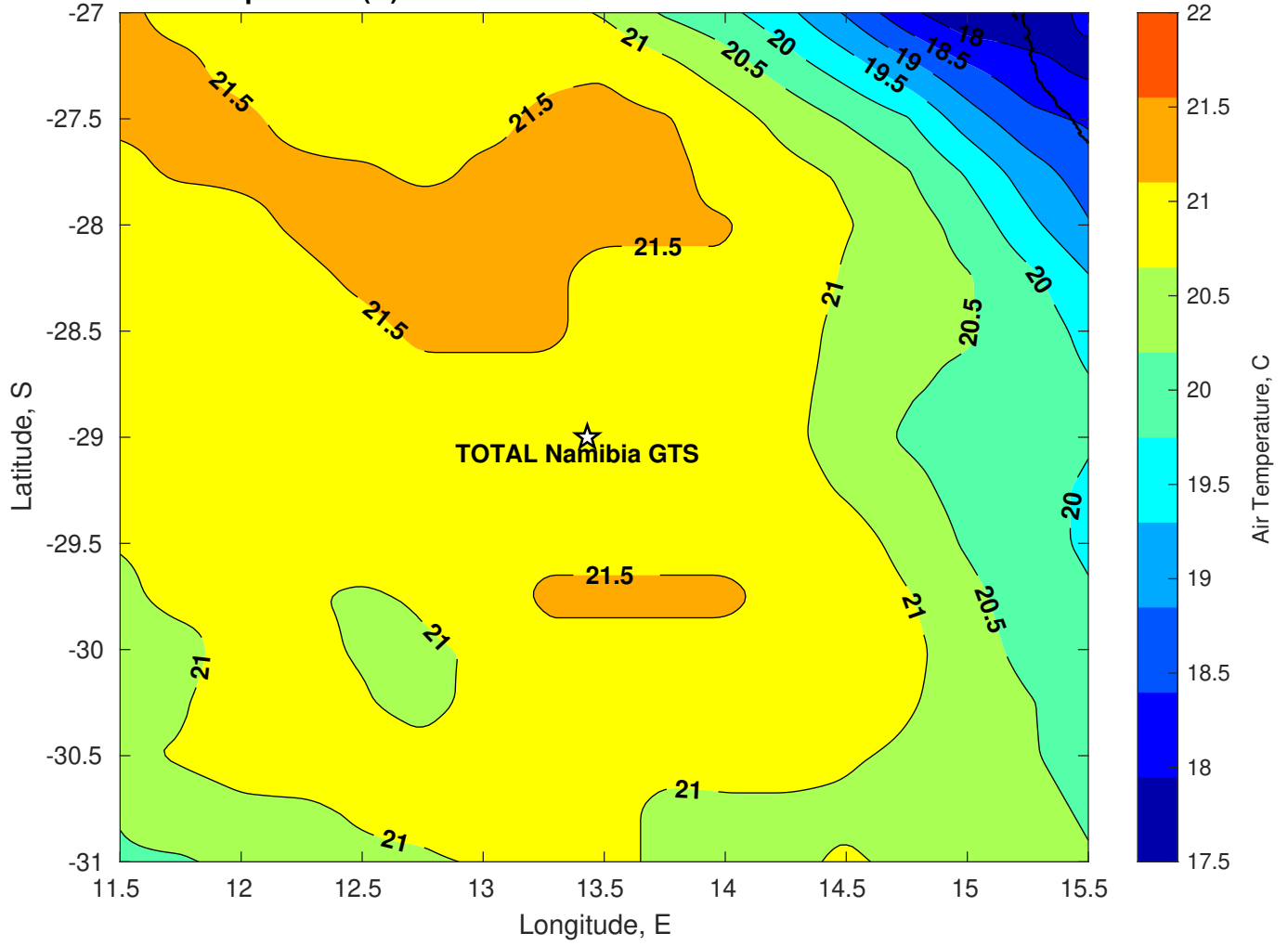
Surface Pressure (mb) for TOTAL Namibia GTS at 25-Mar-2025 00:00:00



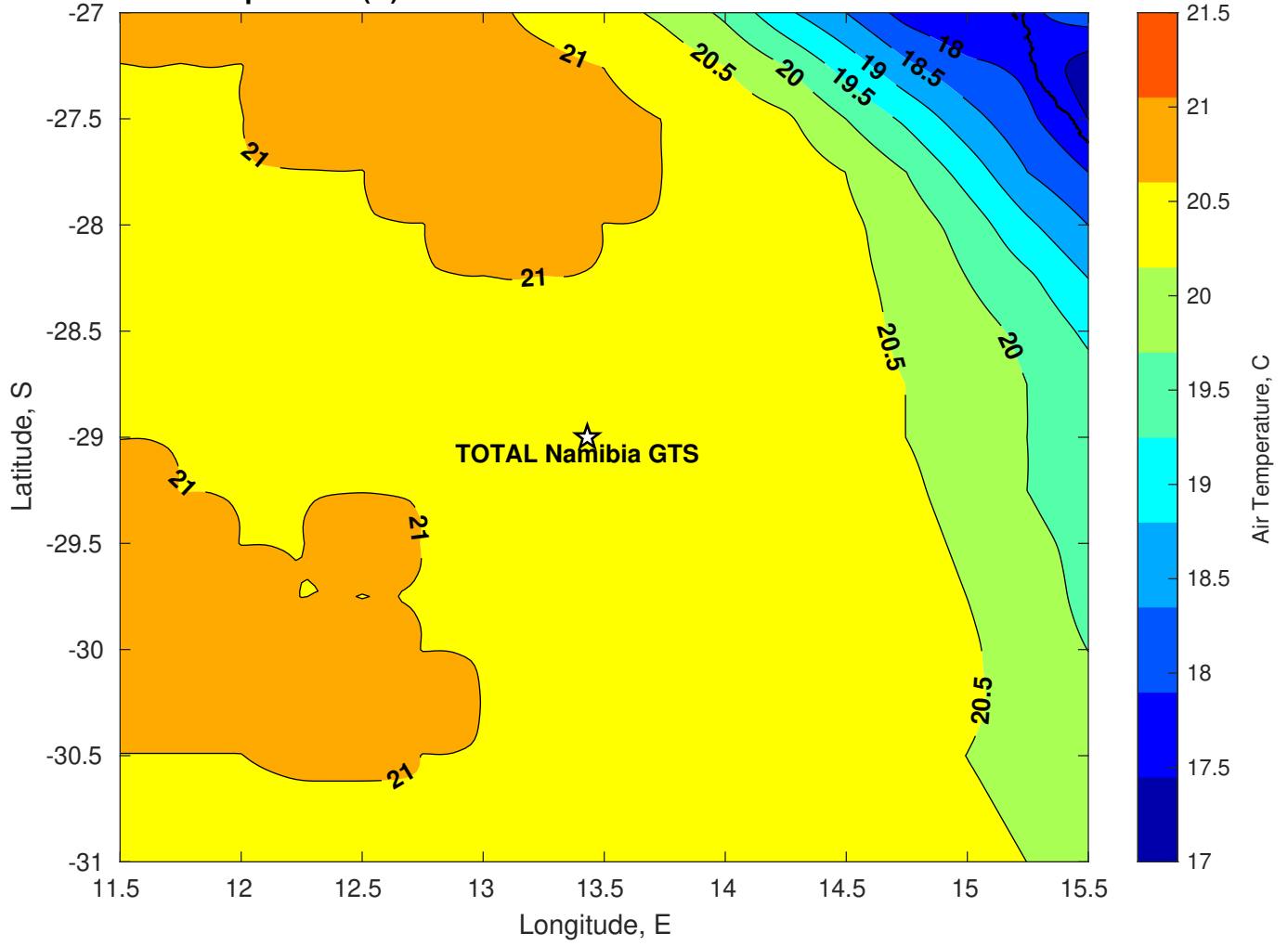
Surface Pressure (mb) for TOTAL Namibia GTS at 26-Mar-2025 00:00:00



Air Temperature (C) for TOTAL Namibia GTS at 24-Mar-2025



**Air Temperature (C) for TOTAL Namibia GTS at 24-Mar-2025**



**Air Temperature (C) for TOTAL Namibia GTS at 24-Mar-2025**

